

Supplementary Information

Impairment of T cells' antiviral and anti-inflammation immunities dominates death from COVID-19

Luhao Zhang^{1,2†}, Rong Li^{1,3†}, Gang Song⁴, Gregory D. Scholes^{2*} and Zhen-Su She^{1,3*}

¹Institute of Health System Engineering, College of Engineering, Peking University, Beijing, China, 100871.

²Department of Chemistry, Princeton University, Princeton, NJ, 08540.

³State Key Laboratory for Turbulence and Complex Systems, Peking University, Beijing, China, 100871.

⁴Beijing Hospital, National Center of Gerontology; Institute of Geriatric Medicine, Chinese Academy of Medical Sciences, Beijing, China, 100730

†These authors contribute equally

*Corresponding author: Gregory D. Scholes, 609-258-0729, gscholes@princeton.edu, 125, Frick Laboratory, Department of Chemistry, Princeton University, Princeton, NJ, and Zhen-Su She, 010-62766559, she@pku.edu.cn, 206, Peking University State Key Laboratory of Turbulence and Complex Systems, Beijing, China.

This file includes:

- Supplementary text
- Figures S1
- Tables S1 to S12
- SI References

Table of content

<i>Supplementary Information Text</i>	2
Asymptotic analysis of viral load peak	2
Parameter fixed during the fitting	2
Derivation of antiviral-inflammation equations for a group of individuals	3
Figure S1. Comparison of simulation of antiviral dynamics to data.	4
Table S1 Parameter names of the Antiviral-Inflammation Model and their units.	5
Table S2 Populations of virus, T cell, and antibody data sources integrated for mild, severe (critical), and non-survivor groups.	6
Table S3 Comparison of viral peak value obtained from Eq.S3 and simulation.	7
Table S4 Methods that give uncertainty for each parameter.....	8
Table S5 Indices of data points of virus, T cells, and antibodies used for performing best fits of each case.	10
Table S6 Best fit (with parameter uncertainty) to each patient (group).....	11
Table S7 Best fit (with parameter uncertainty) for survivors and non-survivors.	15
Table S8 Equation for the goodness of fit (F) for each variable.....	16
Table S9 Summary of the goodness of fit (F)	17
Table S10 Constraints of input parameters for each case.	18
Table S11 Initial guess of parameters for each case.....	20
Table S12 Constraints of parameters to be varied and initial guesses for best fits of survivors and non-survivors.	21
<i>References</i>	22

Supplementary Information Text

Asymptotic analysis of viral load peak

For viral dynamics Eq. (1)-(3), there are a total of six factors, the effective viral increasing rate $\tilde{\alpha}$, T cell clearance rate β , and death rate ϵ , antibody preparation time τ , antibody secretion rate η , and decay rate θ . To obtain analytical solutions that how main factors determine viral peak, the decay of effector T cells and the production of antibodies are neglected, and Eq. (1)-(3) becomes,

$$\frac{dV(t)}{dt} = [\tilde{\alpha} - \beta T_e(t)]V(t) \quad (S1)$$

$$\frac{dT_e(t)}{dt} = \delta V(t) \quad (S2)$$

The analytical solutions are:

$$V(t) = V^* \frac{4}{2 + e^{-\tilde{\alpha}(t-t^*)} + e^{\tilde{\alpha}(t-t^*)}}, V^* = \frac{\tilde{\alpha}^2}{2\beta\delta} \quad (S3)$$

$$T_e(t) = 2\tilde{\alpha} \frac{1}{1 + e^{-\tilde{\alpha}(t-t^*)}} \quad (S4)$$

where, V^* is viral load peak described in the first section of Results, and t^* is the corresponding time. The analytical results for all cases are summarized in Table S3 in SI, which shows they agree with numerical simulation with >90% overlap.

Parameter fixed during the fitting

For all the fits, B_0 is fixed to be cut-off values or to estimated values based on the antibody data points before the rise. T_0 is fixed at the maximum of data. N is selected to be -5 or -10 according to different viral load profiles. I_0 for survivors is the value of the first three data points; I_0 for non-survivors is the mean value of the first three data points. For both survivors and non-survivors, S_{d0} was set to be 0.25 (half of the normal range), S_{h0} was set to be 0. ϵ and θ are the decay rates and were obtained by linear regression of the decay profiles. For cases without decay data points, the fitted ϵ values of other patients with the same severity were used, while an average of the fitted θ (P1, P3, 902, 916) 0.036 is used. For No.910 patient and non-survivors lacking saturated points for antibodies, only γ and τ were varied. κ for survivors is fixed equally to κ of the best fit of non-survivors.

Derivation of antiviral-inflammation equations for a group of individuals

Taking viral load evolution as an example, the evolution of the mean of each variable over a group of individuals is written as:

$$\begin{aligned} \frac{dV_G}{dt} &= \alpha_G V_G - \beta_G T_g V_G - \gamma_G A_G V_G + \langle \Delta\alpha_i \Delta V_i \rangle \\ &- \beta_G \langle \Delta T_i \Delta V_i \rangle - \langle \Delta\beta_i \Delta T_i \rangle V_G - \langle \Delta\beta_i \Delta V_i \rangle T_G - \langle \Delta\beta_i \Delta T_i \Delta V_i \rangle \\ &- \gamma_G \langle \Delta A_i \Delta V_i \rangle - \langle \Delta\gamma_i \Delta A_i \rangle V_G - \langle \Delta\gamma_i \Delta V_i \rangle A_G - \langle \Delta\gamma_i \Delta A_i \Delta V_i \rangle \end{aligned} \quad (S5)$$

Where, $V_G, T_g, A_G, \alpha_G, \beta_G, \gamma_G$ is the mean value of $V, T_e, A, \alpha, \beta, \gamma$ for a group of individuals. $\Delta V_i, \Delta T_i, \Delta A_i, \Delta\alpha_i, \Delta\beta_i$ and $\Delta\gamma_i$ is the deviations of the i^{th} individual's variables and parameters. $\langle \Delta\alpha_i \Delta V_i \rangle$ means the mean over all individual's $\Delta\alpha_i \Delta V_i$, so as other similar terms.

We assume, firstly, the deviation of variable and deviation of parameters are independent of each other $\langle \Delta\alpha_i \Delta V_i \rangle \approx \langle \Delta\alpha_i \rangle \langle \Delta V_i \rangle = 0$, and $\langle \Delta\beta_i \Delta T_i \rangle \approx 0, \langle \Delta\gamma_i \Delta V_i \rangle \approx 0$. The deviation of an individual's V_i changes across several scales over time and is the most prominent around V_G maximum. Maximum of $\Delta V_i, \Delta T_i$ and ΔA_i are not overlap along time and $\Delta V_i, \Delta T_i, \Delta A_i$ is not correlated; therefore, $\langle \Delta T_i \Delta V_i \rangle \approx 0, \langle \Delta A_i \Delta V_i \rangle \approx 0, \langle \Delta\alpha_i \Delta V_i \rangle \approx 0$. We get:

$$\frac{dV_G}{dt} = \alpha_G V_G - \beta_G T_g V_G - \gamma_G A_G V_G \quad (S6)$$

In our fit for groups, we fit the median values of each variable of the group as an approximation to the mean values.

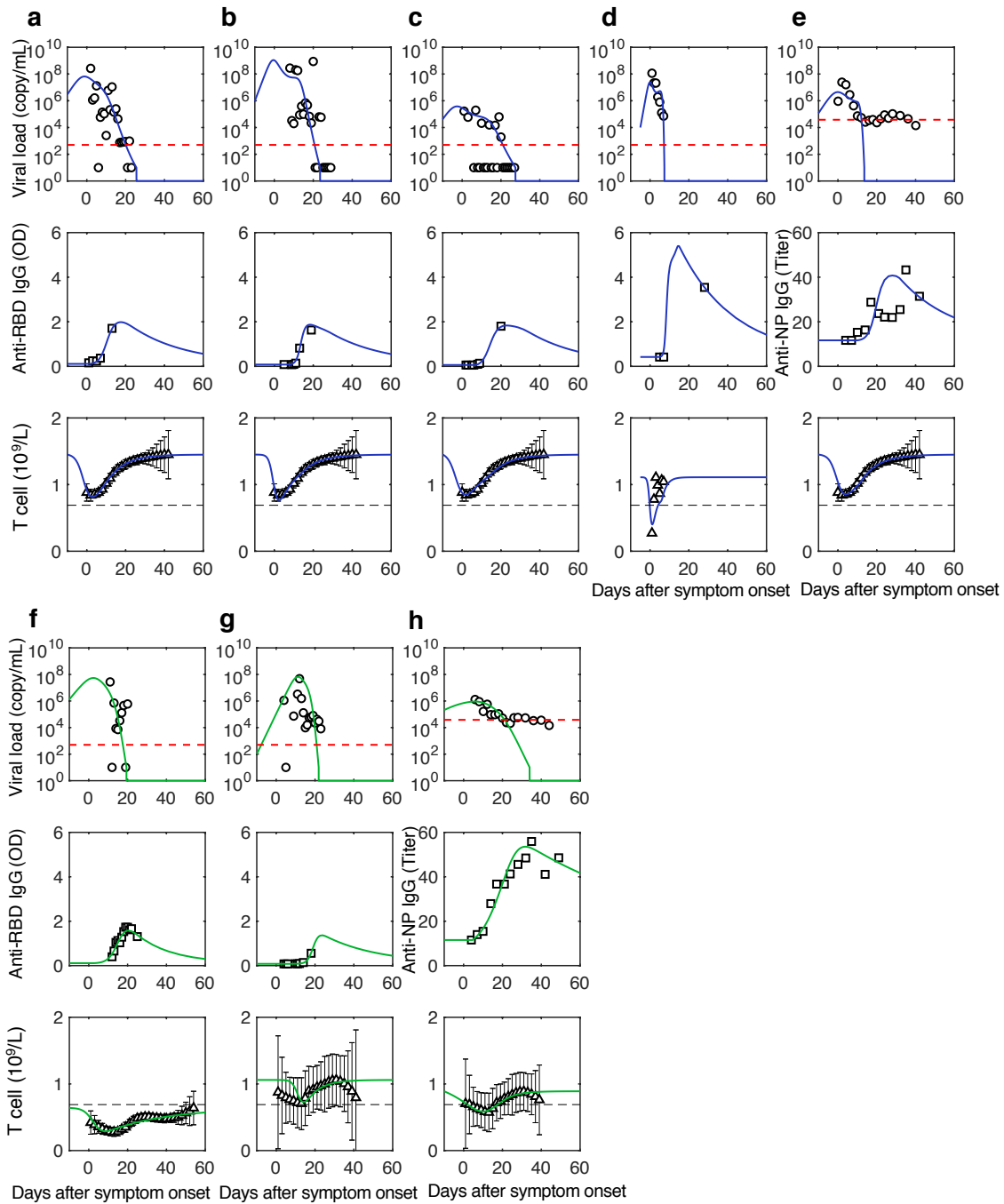


Figure S1. Comparison of simulation of antiviral dynamics to data. For dynamics of virus (circle), antibodies (square), and T cell count (triangle). a-e are mild individuals and the mild group, plotted in blue. f-h are severe(critical) individuals and the severe group, plotted in green.

Table S1 Parameter names of the Antiviral-Inflammation Model and their units.

Parameter	Description	Unit
Antiviral parameters		
V_0	Initial viral load	copy/mL
T_0	Initial naïve T cell concentration	10^9 cell/L
A_0	Initial antibody concentration	OD, or OD Ratio, or Titer
N	Starting day for the simulation	Days after symptom onset
$\tilde{\alpha}$	Virus replication rate	Day ⁻¹
β	Virus killing rate per unit T cells	$(10^9\text{cell/L})^{-1} \text{Day}^{-1}$
γ	Virus killing rate by per unit antibodies	$(\text{OD, or OD Ratio, or Titer})^{-1} \text{Day}^{-1}$
δ	T cell activation rate per unit virus	$(\text{copy/mL})^{-1}(10^9\text{cell/L}) \text{Day}^{-1}$
ϵ	T cell decay rate	Day ⁻¹
η	Antibody secretion rate per unit virus	$(\text{copy/mL})^{-1}(\text{OD, or OD Ratio, or Titer}) \text{Day}^{-1}$
τ	Preparation time before antibody secretion begins	Day
θ	Antibody decay rate	Day ⁻¹
Inflammation parameters		
I_0	Initial concentration of IL-6	pg/mL
S_{d0}	Initial concentration of d-dimer	$\mu\text{g/mL}$
S_{h0}	Initial concentration of high-sensitivity cardiac troponin I	ng/mL
κ	IL-6 formation rate	$(\text{OD, or OD Ratio, or Titer})^{-1} (\text{pg/mL}) \text{Day}^{-1}$
λ	IL-6 inhibition rate	Day ⁻¹
μ_d	Formation rate of d-dimer	$(\text{pg/mL})^{-1}(\mu\text{g/mL}) \text{Day}^{-1}$
ν_d	Inhibition rate of d-dimer	Day ⁻¹
μ_h	Formation rate of high-sensitivity cardiac troponin I	$(\text{pg/mL})^{-1}(\text{ng/mL}) \text{Day}^{-1}$
ν_h	Inhibition rate of high-sensitivity cardiac troponin I	Day ⁻¹

Table S2 Populations of virus, T cell, and antibody data source integrated for mild, severe (critical), and non-survivor groups.

	Viral load	T cell	Antibody
4 individuals from Isabella ²⁸	Isabella ²⁸ 's cohort	Isabella ²⁸ 's cohort (Lymphocyte count)	Isabella ²⁸ 's cohort (Anti-S1 IgG)
6 individuals from Kelvin ⁵⁰	Kelvin's cohort	Median values of CD3+ count of the mild group of HongzhouLu's cohort are used for 3 mild individuals, and median values of CD3+ count of the severe group of HongzhouLu's cohort are used for 3 severe individuals.	Kelvin's cohort
Group			
Mild	38 individuals from Guohong Deng ¹ 's nasopharyngeal swab data from the non-severe group.	138 individuals from Hongzhou Lu ² 's CD3+ count(mild group).	22 individuals from Guohong Deng's Anti-NP IgG data for the non-severe group.
Severe (critical)	20 severe + 9 critical individuals from Guohong Deng's nasopharyngeal swab data from the severe group.	12 severe and 16 critical individuals from Hongzhou Lu's CD3+ count. Take the weighted average of severe and critical medians according to 20:9, so as the estimation of error bars.	23 individuals from Guohong Deng's Anti-NP IgG from the severe group.
Survivors	Median data of 20 survivors from Kelvin To's cohort ⁵⁰ .	137 survived individuals from BinCao ³ 's Lymphocyte count.	Median data of 20 survivors from Kelvin To's cohort ⁵⁰ .
Non-survivors	2 individuals from Kelvin To ⁴ 's saliva data and Yazdan Yazdanpanah ⁵ 's nasopharyngeal data.	54 individuals from BinCao ³ 's Lymphocyte count.	Use one of the 2 patients to represent the two with viral load data.

Table S3 Comparison of viral peak value obtained from Eq.S3 and simulation.

Patient IDs for the patients described in Figure 2 and Figure S1 are provided. For example, a:908 means the patient described in Figure S1a is labelled as No.908; 2d: 902 means the patient described in Figure 2 is labelled as No.902).

Patient ID	Eq.S3 (log10 scale)	Simulation (log10 scale)	value of Eq. S3/value of simulation (log10 scale)
a:908	7.70	7.82	0.99
b:904	8.98	9.04	0.99
c:901	5.44	5.58	0.97
2d:902	6.74	6.80	0.99
f:910	7.74	7.82	0.99
g:916	7.68	7.73	0.99
2a:P1	7.14	7.18	0.99
2b:P3	9.13	9.16	1.00
d:P4	7.28	7.38	0.99
2c:P5	7.38	7.62	0.97
Survivors	5.88	6.11	0.96
Non- survivors	6.55	6.58	1.00
e: Mild	6.54	6.65	0.98
h: Severe group	5.59	5.96	0.94

Table S4 Methods that give uncertainty for each parameter.

Parameter	Methods
Viral dynamics	
V_0	We use a similar approach for uncertainty estimation as used by Marchingo, J. M. et al. Science. 346, 1123–1127 (2014) that uncertainty comes from the fluctuation of medical data. Therefore, large fluctuated data of viral load, T cell, and antibody, which are eliminated when performing best fit, are added to perform fits with data fluctuation. Within each data type, large fluctuated points are added one by one from early to later day, each time a fit is performed. Also, cases including fluctuated points in more than one data type are considered. For example, if a patient has two large fluctuated viral data points and three large fluctuated T cell data points, then the total number of fits with data fluctuation is six (2*3). The range for each parameter is given by the fitted parameters from all the fits with data fluctuation and the best fit, labelled as lower bound and upper bound. Then, we provide 95%CI of each parameter when 95% fits have the parameter in that regime.
$\tilde{\alpha}$	
β	
γ	
δ	
η	
τ	
N	N has no uncertainty because it is initially fixed.
T cell and antibody dynamics	
ϵ	The 95%CI of the fit of the decay profiles is used for 95%CI uncertainty. If the number of T cell data points for an individual's fit is two, the uncertainty of ϵ was estimated by that of the corresponding group who shares the same severity. 95%CI of No.916 patient's θ was used for cases whose uncertainty cannot be obtained by fitting.
θ	
T_0	The 95%CI of the group data of the day with the highest median is used. Individual T_0 's uncertainty is estimated by that of the corresponding group, which has the same severity as the individual.
A_0	A_0 's uncertainty is supposed to be determined by instrumental error and is not estimated from the limited number of data points in the initial stage (before rising).
Inflammation dynamics	
κ	We use the same approach similar to viral dynamics. The way to consider group median data fluctuation is to make one of the group median data be substituted by the upper/lower limit value of its error bar, keeping others unchanged, and then a fit is performed. The process is repeated until each data point is substituted in one of the fits. Then the upper bound, lower bound, and 95%CI of each parameter is obtained using the same approach
λ	
μ_d	
ν_d	
μ_h	
ν_h	

$I(0)$	as in viral dynamics. The uncertainty of κ of survivors is the same as non-survivors.
$S_d(0),$ $S_h(0)$	The range of S_{d0} was estimated by the normal range of D-dimer (Ref.2 in SI). The range of S_{h0} is estimated between 0 and the average normal upper limit in men and women (Ref.6 in SI). 95%CI is obtained by calculating 95% regime of the range.

Table S5 Indices of data points of virus, T cells, and antibodies used for performing best fits of each case.

Patient ID follows the Latin letter of their corresponding panel in Supplementary Fig 1 and Fig.2. For group data, best fits were performed using median values. “Total” means all the data were used. “-” means the data were not used. For fits of I , S_d , and S_h , all the data were used.

Patient ID	V data	T data	A data
a:908	[1,4,11,13,14,15,16:19,21,22]	Total	Total
b:904	[1,4,5,9:12]	Total	Total
c:901	[1,2,4,7,11,14,17,24]	Total	Total
2d:902	[1:7]	[1:16]	Total
f:910	[1,5,12,13]	[1:16]	Total
g:916	[1,3,5:6]	Total	Total
2a:P1	[1:4,5:7]	[2:5]	Total
2b:P3	[1:2,4:8]	[1,3,4,6,8,9]	Total
d:P4	[1:7]	[1,5,7]	Total
2c:P5	[4:8]	[1,3,5,6]	Total
Survivors	[1:6,8:10,12,14:16,17:19,21:23]	Total	[1:21,25]
Non-survivors	[1:8]	-	Total
e:Mild group	[1:7]	Total	[1:4,6,10,11]
h:Severe group	[1:2,4,6:8]	Total	[1:10,12]

Table S6 Best fit (with parameter uncertainty) to each patient (group).

LB: Lower bound of the uncertainty. UB: Upper bound of the uncertainty. “-” means the parameter is fixed or the quality of data is not able to perform the estimation. Patient 2d:902 has no reasonable fitting other than best fit.

Patient ID	$\tilde{\alpha}$	$\log_{10}(V_0)$	β	γ	$\delta/10^{-8}$	$\epsilon/10^{-1}$	$\eta/10^{-8}$	τ	$\theta/10^{-2}$	T_0	B_0	N
a:908	0.51	6.47	1.18	0.65	0.22	1.14	0.44	11.70	3.57	1.45	0.11	-10
LB	0.48	5.45	1.12	0.50	0.22	-	0.44	11.70	-	-	-	-
UB	0.52	6.47	1.21	0.65	2.35	-	4.87	12.36	-	-	-	-
95% CI	(LB, UB)					(1.06, 1.22)	(LB, UB)		(0, 10.99)	(1.09, 1.81)		
b:904	0.89	5.98	2.08	1.21	0.02	1.14	0.04	14.09	3.57	1.45	0.08	-10
LB	0.82	4.31	1.93	0.88	0.02	-	0.04	13.90	-	-	-	-
UB	1.09	5.98	2.50	1.21	0.37	-	0.65	14.56	-	-	-	-
95% CI	(LB, UB)					(1.06, 1.22)	(LB, UB)		(0, 10.99)	(1.09, 1.81)		
c:901	0.47	4.62	1.15	0.54	34.92	1.14	68.40	17.18	3.57	1.45	0.06	-10
LB	0.47	4.24	1.15	0.54	30.48	-	64.64	17.18	0	-	-	-
UB	0.59	4.62	1.44	0.64	34.92	-	68.40	18.43	10.99	-	-	-
95% CI	(LB, UB)					(1.06, 1.22)	(LB, UB)		(0, 10.99)	(1.09, 1.81)		
2d:902	0.58	3.69	1.70	1.19	1.81	1.40	4.48	5.40	5.11	1.06	0.11	-10
LB	-	-	-	-	-	-	-	-	-	-	-	-
UB	-	-	-	-	-	-	-	-	-	-	-	-
95% CI	(LB, UB)					(1.17, 1.64)	(LB, UB)		(0, 10.99)	(0.68, 1.44)	-	-

f:910	0.70	2.00	3.00	3.36	0.15	1.40	0.40	7.74	3.57	1.06	0.08	-10
LB	-	-	-	2.52	-	-	0.40	7.74	-	-	-	-
UB	-	-	-	4.68	-	-	2.08	10.80	-	-	-	-
95% CI	(LB, UB)					(1.17, 1.64)	(LB, UB)		(0, 10.99)	(0.68, 1.44)	-	-
g:916	0.41	6.12	1.93	1.44	0.09	0.33	0.43	12.79	5.49	0.64	0.11	-10
LB	0.33	5.27	1.50	0.10	0.06	-	0.28	12.79	-	-	-	-
UB	0.46	6.66	2.28	1.75	0.65	-	3.28	13.83	-	-	-	-
95% CI	(LB, UB)					(0.22, 0.44)	(LB, UB)		(0, 10.99)	(0.39, 0.89)	-	-
	$\tilde{\alpha}$	$\log_{10}(V_0)$	β	γ	$\delta/10^{-8}$	$\epsilon/10^{-1}$	$\eta/10^{-8}$	τ	$\theta/10^{-2}$	T_0	B_0	N
2a:P1	1.17	2.93	10.00	1.52	0.50	1.14	14.58	11.22	1.65	1.74	0.30	-5
LB	0.79	2.93	7.18	1.52	0.07	-	1.91	11.02	-	-	-	-
UB	1.17	7.70	10.00	2.58	0.57	-	14.58	18.62	-	-	-	-
95% CI	(LB, UB)					(1.06, 1.22)	(LB, UB)		(0, 10.99)	(1.53, 1.95)	-	-
2b:P3	1.48	6.63	8.05	4.72	0.01	0.78	0.02	20.13	2.03	0.90	0.16	-10
LB	1.30	6.61	8.05	4.72	0.01	-	0.02	20.10	-	-	-	-
UB	1.48	7.01	8.82	4.91	0.01	-	0.03	20.48	-	-	-	-
95% CI	(LB, UB)					(0.76, 0.80)	(LB, UB)		(0, 10.99)	(0.69, 1.11)	-	-
d:P4	1.86	4.00	3.84	47.30	2.38	4.14	7.84	8.45	3.57	1.11	0.42	-5
LB	1.83	3.69	3.84	43.57	1.65	-	7.56	8.45	-	-	-	-
UB	2.11	4.29	7.02	49.25	2.38	-	8.83	8.83	-	-	-	-
95% CI	(LB, UB)					(4.11,	(LB, UB)		(0,	(0.90,	-	-

						5.01)			10.99)	1.32)		
2c:P5	0.82	4.69	1.31	0.11	1.08	4.72	9.26	6.55	3.57	0.88	0.10	-5
LB	0.70	4.69	1.14	0.11	0.91	-	8.12	6.55	-	-	-	-
UB	1.13	5.74	1.75	0.14	1.60	-	12.86	9.60	-	-	-	-
95% CI	(LB, UB)					(3.43, 4.80)	(LB, UB)		(0, 10.99)	(0.66, 1.11)	-	-
Survivor Group	0.67	5.34	2.96	1.16	10.00	3.21	18.37	9.70	3.51	0.84	0.13	0
LB	0.67	5.20	2.96	1.11	9.50	2.68	17.22	9.28	-	-	-	-
UB	0.79	5.34	3.59	1.24	10.00	3.21	19.59	9.85	-	-	-	-
95% CI	(LB, UB)					(2.68, 3.21)	(LB, UB)		(0, 10.99)	(0.72, 0.92)	-	-
Non-survivor Group	0.55	5.00	16.98	3.28	0.25	0.33	23.00	7.98	0.00	0.39	0.08	0
LB	-	-	-	-	-	0.22	-	-	-	-	-	-
UB	-	-	-	-	-	0.44	-	-	-	-	-	-
95% CI						(0.22, 0.44)	-	-	-	(0.29, 0.49)	-	-
	$\tilde{\alpha}$	$\log_{10}(V_0)$	β	γ	$\delta/10^{-8}$	$\epsilon/10^{-1}$	$\eta/10^{-7}$	τ	$\theta/10^{-2}$	T_0	B_0	N
e: Mild Group	0.51	5.07	1.25	7.83	0.30	1.14	9.81	20.00	3.57	1.45	11.67	-10
LB	0.41	4.82	1.00	2.58	2.81	-	6.98	19.30	-	-	-	-
UB	0.60	5.76	1.44	7.83	4.16	-	9.81	20.00	-	-	-	-
95% CI	(LB, UB)					(1.06, 1.22)	(LB, UB)		(0, 10.99)	(1.09, 1.81)		

h: Severe Group	0.16	5.32	0.52	0.02	0.63	1.56	30.93	14.61	1.29	0.89	11.53	-10
LB	0.15	2.63	0.50	0.02	5.93	-	30.60	13.58	-	-	-	-
UB	0.61	5.32	2.51	0.16	8.49	-	39.99	15.05	-	-	-	-
95% CI	(LB, UB)					(1.28, 1.84)	(LB, UB)		(0, 10.99)	(0.60, 1.17)	-	-

Table S7 Best fit (with parameter uncertainty) for survivors and non-survivors.

Uncertainty of $S_d(0)$ was estimated by the normal range of d-dimer². The range of $S_h(0)$ is estimated between 0 and the upper limit of the first data point of HSCT. The upper reference limit of HSCT in Fig.4 was from the averaged values in men and women⁶. $I_0 = 5.4$, which is set to be the middle of the normal range of IL-6⁷.

Survivors	$I(0)$	$S_{d0}(0)$	$S_{h0}(0)$	κ	λ	μ_d	ν_d	μ_h	ν_h
Best fit	5.58	0.25	0	1.63	2.08	0.04	0.40	0.25	0.42
LB	3.60	0.00	0.00	0.11	1.20	0.04	0.40	0.24	0.40
UB	11.44	0.5	2.5	2.12	3.00	0.07	0.40	0.26	0.44
95%CI	(LB, UB)	(0.01, 0.49)	(0, 90.49)	(LB, UB)					
Non-survivors	$I(0)$	$S_{d0}(0)$	$S_{h0}(0)$	κ	λ	μ_d	ν_d	μ_h	ν_h
Best fit	10.73	0.25	0.00	1.63	0.00	0.08	0.00	0.37	0.00
LB	9.25	0.00	0.00	0.11	0.00	0.06	0.00	0.32	0.00
UB	12.83	0.50	95.25	2.12	0.02	0.11	0.00	1.00	0.37
95%CI	(LB, UB)	(0.01, 0.49)	(0, 90.49)	(LB, UB)					

Table S8 Equation for goodness of fit (F) for each variable.

$V_{\max}, T_{\max}, A_{\max}, L_{\max}$ are the maximums of the simulations for the virus, T cells, antibodies, and inflammation markers. n_V, n_T, n_L are the number of data points. V_i, T_i, A_i, L_i are the value of data and $\bar{V}_i, \bar{T}_i, \bar{A}_i, \bar{L}_i$ are the simulated value.

Variable	Equations of F
V	$1 - \frac{1}{\log 10(V_{\max})} \sqrt{\frac{1}{n_V} \sum_{i=1}^{n_V} (\log 10 V_i - \log 10 \bar{V}_i)^2}$
T	$1 - \frac{1}{T_{\max}} \sqrt{\frac{1}{n_T} \sum_{i=1}^{n_T} (T_i - \bar{T}_i)^2}$
A	$1 - \frac{1}{A_{\max}} \sqrt{\frac{1}{n_A} \sum_{i=1}^{n_A} (A_i - \bar{A}_i)^2}$
I, S_d, S_h for survivors	$1 - \frac{1}{L_{\max}} \sqrt{\frac{1}{n_L} \sum_{i=1}^{n_L} (L_i - \bar{L}_i)^2, L = I, S_d, S_h}$
I, S_d, S_h for non-survivors	$1 - \frac{1}{\log 10(L_{\max})} \sqrt{\frac{1}{n_L} \sum_{i=1}^{n_L} (\log 10 L_i - \log 10 \bar{L}_i)^2, L = I, S_d, S_h}$

Table S9 Summary of the goodness of fit (F)

	<i>V</i>	<i>T</i>	<i>A</i>	<i>I</i>	<i>S_d</i>	<i>S_h</i>
a:908	0.92	0.99	0.97	-	-	-
b:904	0.95	0.98	0.94			
c:901	0.94	0.98	0.99			
2d:902	0.85	0.94	0.89			
f:910	0.97	0.86	0.99			
g:916	0.91	0.94	0.92			
2a:P1	0.96	0.99	0.99			
2b:P3	0.97	0.94	0.96			
d:P4	0.89	0.86	0.97			
2c:P5	0.82	0.91	0.84			
Survivors	0.81	0.97	0.85			
Non-survivors	0.77	0.84	0.98	0.97	0.97	0.95
e:Mild	0.90	0.97	0.89	-	-	-
h:Severe group	0.97	0.96	0.92			

Table S10 Constraints of input parameters for each case.

Patient ID	$\tilde{\alpha}$	$\log_{10}(V_0)$	β	γ	$\delta/10^{-8}$	$\epsilon/10^{-1}$	$\eta/10^{-8}$	τ	$\theta/10^{-2}$
a:908	0.1 2.5	1 8	1 5	0.1 5	0.01	1.14	0.02	5 20	3.57
b:904					5		5		
c:901					0.01		0.02		
2d:902			50		100				
f:910			0.01		0.02	1 20	5.11		
g:916			5		5		5.49		
2a:P1	0.1 2.5	1 8	1 10	0.1 5	0.15	1.40	0.4	5 20	3.57
2b:P3					1.14	1.65			
d:P4					0.01	0.30	2.03		
2c:P5			5		0.90	3.57			
Survivors			4.10		10.50	3.57			
	0.5	0.5	0.05	0.1	1	1	1	1	3.57
	1.5	2	0.15	2.5	8	16	10		
	0.1	1	0.1	1	1	0.02	5		
	2.5	5	5	10	5	20	20	3.51	

Non-survivors	0.55	5	16.98	$\frac{0.5}{8}$	0.25	0.33	23	$\frac{1}{15}$	0.00
	$\tilde{\alpha}$	$\log_{10}(V_0)$	β	γ	$\delta/10^{-8}$	$\epsilon/10^{-1}$	$\eta/10^{-7}$	τ	$\theta/10^{-2}$
e: Mild Group	0.1	1	1 5	1 10	0.1 5	1.14	1 10	5 20	3.57
h: Severe Group	2.5	8	0.5 5	0.002 1	1 10	1.56	10 40		1.29

Table S11 Initial guess of parameters for each case.

Patient ID	$\tilde{\alpha}$	$\log_{10}(V_0)$	β	γ	$\delta / 10^{-8}$	$\epsilon / 10^{-1}$	$\eta / 10^{-8}$	τ	$\theta / 10^{-2}$	T_0	A_0	N
a:908	0.80	6.00	2.00	0.80	0.07	1.14	0.16	8.00	3.57	1.45	0.11	-10
b:904	0.80	6.00	1.60	1.00	0.02	1.14	0.03	15.00	3.57	1.45	0.08	-10
c:901	0.50	4.00	1.40	0.50	30.00	1.14	70.00	15.00	3.57	1.45	0.06	-10
2d:902	1.00	1.50	4.50	1.12	0.50	1.40	1.80	4.50	5.11	1.06	0.11	-10
f:910	1.00	2.00	6.00	2.40	0.18	0.33	0.95	6.00	5.49	0.64	0.11	-10
g:916	0.70	2.00	3.00	2.50	0.15	1.40	0.50	7.50	3.57	1.06	0.08	-10
2a:P1	1.00	4.00	4.92	0.30	0.59	1.14	11.00	10.00	1.65	1.74	0.30	-5
2b:P3	1.30	7.00	4.58	2.00	0.01	0.60	0.03	18.00	2.03	0.90	0.16	-5
d:P4	1.60	5.00	3.06	1.20	0.35	4.10	1.20	14.00	3.57	1.11	0.42	-5
2c:P5	0.80	4.00	1.10	0.09	0.29	4.70	4.00	3.50	3.57	0.88	0.10	-5
Survivors	1.00	5.00	2.60	0.90	4.00	0.15	9.00	9.50	3.57	0.84	0.13	0
Non-survivors	0.55	5.00	16.98	4.00	0.25	0.33	23.00	8.00	0.00	0.39	0.08	0
	$\tilde{\alpha}$	$\log_{10}(V_0)$	β	γ	$\delta / 10^{-8}$	$\epsilon / 10^{-1}$	$\eta / 10^{-7}$	τ	$\theta / 10^{-2}$	T_0	A_0	N
e:Mild Group	0.86	4.00	2.51	1.00	1.00	1.14	1.00	10.00	4.57	1.45	11.67	-10
h:Severe Group	0.3	5.8	1.20	0.01	6	1.56	27	10.00	1.29	0.89	11.53	-10

Table S12 Constraints of parameters to be varied and initial guesses for best fits of survivors and non-survivors.

“-” means the parameter is fixed during the fit.

	$I(0)$	$S_d(0)$	$S_h(0)$	κ	λ	μ_d	ν_d	μ_h	ν_h
Survivors	-	-	-	1.63	0	0	0.4	0	0.4
	-	-	-	1.63	3	1	0.6	1	0.6
Initial guess	6.40	0.25	0	1.63	2.32	0.04	0.40	0.25	0.42
	$I(0)$	$S_d(0)$	$S_h(0)$	κ	λ	μ_d	ν_d	μ_h	ν_h
Non-survivors	-	-	-	0	0	0	0	0	0
	-	-	-	3	3	1	1	1	1
Initial guess	11.73	0.25	0	1.82	0.00	0.085	0.00	0.38	0.00

References

1. Tan, W. *et al.* Viral Kinetics and Antibody Responses in Patients with COVID-19. *medRxiv* 2020.03.24.20042382 (2020). doi:10.1101/2020.03.24.20042382
2. Zhang, X. *et al.* Viral and host factors related to the clinical outcome of COVID-19. *Nature* **583**, 437–440 (2020).
3. Zhou, F. *et al.* Clinical course and risk factors for mortality of adult inpatients with COVID-19 in Wuhan, China: a retrospective cohort study. *Lancet* **395**, 1054–1062 (2020).
4. To, K. K.-W. *et al.* Temporal profiles of viral load in posterior oropharyngeal saliva samples and serum antibody responses during infection by SARS-CoV-2: an observational cohort study. *Lancet. Infect. Dis.* **20**, 565–574 (2020).
5. Lescure, F. X. *et al.* Clinical and virological data of the first cases of COVID-19 in Europe: a case series. *Lancet Infect. Dis.* **20**, 697–706 (2020).
6. Stelzle, D. *et al.* High-sensitivity cardiac troponin I and risk of heart failure in patients with suspected acute coronary syndrome: a cohort study. *Eur. Hear. J. - Qual. Care Clin. Outcomes* **4**, 36–42 (2018).
7. Zhou, F. *et al.* Clinical course and risk factors for mortality of adult inpatients with COVID-19 in Wuhan, China: a retrospective cohort study. *Lancet* **395**, 1054–1062 (2020).