

1 **Neuro-COVID long-haulers exhibit broad dysfunction in T cell memory generation and**  
2 **responses to vaccination**

3 Lavanya Visvabharathy<sup>1\*</sup>¶, Barbara Hanson<sup>1,3</sup>, Zachary Orban<sup>1</sup>, Patrick H. Lim<sup>1</sup>, Nicole Palacio<sup>2</sup>,  
4 Rishi Jain<sup>1</sup>, Eric Michael Liotta<sup>1</sup>, Pablo Penaloza-MacMaster<sup>2</sup>, Igor J. Koralnik<sup>1\*</sup>

5 <sup>1</sup>Ken and Ruth Davee Department of Neurology, Feinberg School of Medicine, Northwestern  
6 University, Chicago IL 60611 USA

7 <sup>2</sup>Department of Microbiology-Immunology, Feinberg School of Medicine, Northwestern  
8 University, Chicago IL 60611 USA

9 <sup>3</sup>Rush Medical College, Chicago IL 60612 USA

10

11 \*Corresponding authors: Igor J. Koralnik, M.D.: [igor.koralnik@northwestern.edu](mailto:igor.koralnik@northwestern.edu);

12 Lavanya Visvabharathy, Ph.D: [lavanya.visvabharathy@northwestern.edu](mailto:lavanya.visvabharathy@northwestern.edu)

13 ¶ Lead contact: Lavanya Visvabharathy, Ph.D

14 **Summary**

15 The high prevalence of post-acute sequelae of SARS-CoV-2 infection (PASC) is a significant  
16 health concern. In particular, virus-specific immunity in patients who suffer from chronic  
17 neurologic symptoms after mild acute COVID remain poorly understood. Here, we report that  
18 neuro-PASC patients have a specific signature composed of humoral and cellular immune  
19 responses that are biased towards different structural proteins compared to healthy COVID  
20 convalescents. Interestingly, the severity of cognitive deficits or quality of life markers in neuro-  
21 PASC patients are associated with reduced effector molecule expression in memory T cells.  
22 Furthermore, we demonstrate that T cell responses to SARS-CoV-2 mRNA vaccines are  
23 aberrantly elevated in longitudinally sampled neuro-PASC patients compared with healthy  
24 COVID convalescents. These data provide a framework for the rational design of diagnostics and  
25 predictive biomarkers for long-COVID disease, as well as a blueprint for improved therapeutics.

26 **Keywords:** COVID-19 immunity, T cell memory, neuro-PASC, long-COVID, vaccine-induced  
27 immunity

## 28 **Introduction**

29 SARS-CoV-2 is the causative agent of a worldwide pandemic that started in Wuhan,  
30 China in December, 2019. There have been more than 200 million cases and over 4 million  
31 deaths globally attributable to COVID-19 disease (Center, 2021). Although highly effective  
32 vaccines are now used to prevent severe disease and death caused by SARS-CoV-2, long-term  
33 sequelae of SARS-CoV-2 infection are increasingly becoming an important medical concern.

34 SARS-CoV-2 infection is associated with presentations ranging from asymptomatic  
35 carriage to severe multi-organ dysfunction (Li et al., 2020; Liguori et al., 2020; Syed et al.,  
36 2020). Globally, the estimated fatality rate following SARS-CoV-2 infection is approximately 1-  
37 2%, but not all patients recover to their baseline states (Higgins et al., 2020). “Long COVID”  
38 affects an estimated 10-40% of all infected people and includes symptoms persisting more than  
39 28 days after diagnosis of SARS-CoV-2 infection, termed “post-acute sequelae of SARS-CoV-2  
40 infection” or PASC (Ladds et al., 2020; Vehar et al., 2021). Greater than two-thirds of  
41 hospitalized COVID-19 patients experience ongoing fatigue, breathlessness, and psychiatric  
42 issues such as post-traumatic stress disorder (PTSD) 4-8 weeks after discharge (Halpin et al.,  
43 2021). However, the vast majority of people with COVID experience mild disease not requiring  
44 hospitalization, and more than half of these have symptoms persisting more than 4 months after  
45 acute infection (Petersen et al., 2020). Many people who survived Middle-East respiratory virus  
46 (MERS) and the original SARS-CoV pandemic also experienced PTSD and neurological  
47 impairments up to 3.5 years after acute infection (Ahmed et al., 2020; Lam et al., 2009). More  
48 recent studies on recovered COVID-19 patients showed significant cognitive deficits in attention,  
49 working memory, and emotional processing months after acute infection had resolved  
50 (Hampshire, 2021). Here, we focus on a cohort of mostly non-hospitalized long-COVID patients

51 presenting with neurological symptoms (“neuro-PASC”) who exhibit a reduction in quality of  
52 life with regards to cognitive and fatigue parameters (Graham et al., 2021).

53 Numerous studies suggest that a robust T cell response is necessary for viral clearance in  
54 infected individuals. In particular, CD4<sup>+</sup> T cell responses directed against the Spike protein were  
55 found in 100% of healthy COVID convalescents, while 70% displayed Spike-specific CD8<sup>+</sup> T  
56 cell responses (Grifoni et al., 2020). Another study found that memory T cells cross-reactive to  
57 SARS-CoV-2 nucleocapsid (N) protein persisted in people exposed to SARS-CoV up to 17 years  
58 after the epidemic of 2003 (Le Bert et al., 2020). Post-mortem autopsies of COVID-19 patients  
59 have shown that innate immune cells but not lymphocytes are enriched in lung infiltrate, and that  
60 these patients exhibit impaired germinal center formation in lung draining lymph nodes (Duan et  
61 al., 2020). Additional studies have shown that CD8<sup>+</sup> T cell depletion after SARS-CoV-2  
62 infection of rhesus macaques impairs anamnestic responses, suggesting a role for T cell memory  
63 in long-term immunity to SARS-CoV-2 infection (McMahan et al., 2021).

64 Most studies on T cell responses to SARS-CoV-2 have focused on acutely symptomatic  
65 individuals. However, adaptive immune responses in patients who remain chronically  
66 symptomatic remain largely unexplored. Our studies indicate that neuro-PASC patients (“CN”)  
67 had hypo-functional Ag-specific CD8<sup>+</sup> T cell memory responses SARS-CoV-2 compared with  
68 healthy convalescents (“CC”) and enhanced reactivity to N and M proteins compared with CC  
69 subjects. The severity of cognitive deficits and quality of life markers were associated with  
70 enhanced polarization in cytolytic granule expression in memory T cell subsets. Finally, we  
71 demonstrate that T cell responses to SARS-CoV-2 vaccination are more robust and display  
72 aberrant kinetics in neuro-PASC patients compared with control groups. Together, these data  
73 demonstrate a wide-scale dysfunction in SARS-CoV-2 T cell memory in neuro-PASC long-

- 74 hauler patients, with important implications for both appropriate diagnostic and vaccination
- 75 strategies.

## 76 **Results**

### 77 *Clinical characteristics of neuro-PASC patients*

78 We enrolled a total of 111 participants prior to SARS-CoV-2 vaccination drawn from the  
79 neuro-COVID-19 outpatient clinic at Northwestern Memorial Hospital or from the surrounding  
80 Chicago area. This included 56 neuro-PASC “CN” patients (confirmed RT-PCR+ or anti-SARS-  
81 CoV-2 Spike IgG+) meeting Infectious Disease Society of America clinical criteria for COVID-  
82 19 starting after February 2020 and had neurologic symptoms lasting at least 6 weeks post-  
83 infection, as previously reported (Graham et al., 2021). Among those, 48 (86%) were never  
84 hospitalized for pneumonia or hypoxemia. We additionally recruited 24 healthy COVID  
85 convalescents without lasting symptoms (RT-PCR+ or seropositive for anti- SARS-CoV-2 Spike  
86 RBD IgG, “CC”); and 31 healthy controls who were RT-PCR- and seronegative for SARS-CoV-  
87 2 Spike-IgG (“HC”; study description in Fig. 1A).

88 CN patients displayed a constellation of neurological symptoms similar to those  
89 previously reported by our group and in other studies (Fig. 1B). In addition, we utilized  
90 standardized methods to quantify their quality of life and cognitive disturbances relative to  
91 healthy convalescents. Results from the patient reported outcomes information system  
92 (PROMIS-57) survey (Tang et al., 2019) showed that CN patients scored significantly lower on  
93 physical function and higher on anxiety, depression, pain and other metrics compared with CC  
94 subjects or the national average (Fig. 1C). NIH toolbox tests administered to CN patients to  
95 assess their cognitive function (Weintraub et al., 2013) showed CN patients had significantly  
96 lower T scores in the attention module, which was indicative of cognitive dysfunction relative to  
97 the national average (Fig. 1D).

98 *Neuro-PASC is associated with a distinct immunodominance hierarchy.*

99 To determine whether neuro-PASC included alterations in the magnitude and/or  
100 specificity of Ag-specific T cell responses in CN patients, we performed ELISPOT for SARS-  
101 CoV-2-specific T cells. PBMC from each subject were cultured in the presence of peptide pools  
102 derived from spike (S), nucleocapsid (N), or membrane (M) proteins of SARS-CoV-2 (Fig. S1).  
103 The magnitude and specificity of both IFN- $\gamma$  and IL-2 responses to S sub-pools were similar  
104 between CN and CC subjects (Fig. 2A-B). However, CN subjects produced high levels of IFN- $\gamma$   
105 against all sub-pools of N and M proteins, while CC subjects had a specificity for the N1 pool  
106 and lower responses against all M pools (Fig. 2C-D), indicative of different immunodominance  
107 hierarchies between groups. No significant differences were found in IL-2 production, and  
108 healthy controls exhibited some response to N pools likely caused by cross-reactivity with  
109 endemic coronaviruses (Fig. 2E-F). Antibody titers against the Spike receptor-binding domain  
110 (RBD) did not differ between CN and CC groups (Fig. 2G). Interestingly, high IgG titers did not  
111 correlate with the magnitude of the IFN- $\gamma$  T cell response against S2 or S3 peptide pools  
112 comprising the 2 halves of the Spike RBD (Fig. S2).

113 *CD4<sup>+</sup> Tfh cells display opposing reactivity to SARS-CoV-2 N- and M-proteins in neuro-PASC vs.*  
114 *healthy COVID convalescents*

115 RNA-Seq analysis of CD4<sup>+</sup> T cells from hospitalized and non-hospitalized COVID-19  
116 patients showed that severe disease is associated with elevated CD4<sup>+</sup> T follicular helper (Tfh)  
117 proportions relative to patients with mild disease (Meckiff et al., 2020). We sought to determine  
118 whether Tfh responses (gating in Fig. S3) that prime antibody production from plasma B cells  
119 could similarly differentiate neuro-PASC CN patients from CC individuals. Immunophenotyping  
120 showed that there were no differences in total percentages of T cell subsets, including Tfh cells,

121 between groups (Fig. S4). The activation-induced marker (AIM) assay has been previously used  
122 to detect TCR-mediated activation of T cells (Grifoni et al., 2020) and we used this method to  
123 investigate Tfh cell activation (gating for Tfh cells in Fig. S3). N protein-specific  
124 CD134<sup>+</sup>CD137<sup>+</sup> (AIM<sup>+</sup>) CD4 Tfh cells were significantly elevated in CN compared with CC  
125 subjects, while the opposite trend was observed in M protein-specific activation (Fig. 3A-B). No  
126 differences were seen in Tfh activation between CN and CC groups across Spike peptide pools  
127 (Fig. 3B). The magnitude of N- and M-specific Tfh cell activation did not correlate with the time  
128 since acute infection in either CN or CC patients (Fig. 3C-D) despite reports showing that  
129 antibody titers against N protein decrease rapidly post-infection (Van Elslande et al., 2021)  
130 which would presumably lead to decreased N-specific Tfh cell activation over time. N-specific  
131 IgG titers were significantly elevated in CN compared with CC subjects (Fig. 3E), consistent  
132 with the enhanced N-specific CD4<sup>+</sup> Tfh cell activation shown in 3B. Similar to Tfh cells, there  
133 was no correlation between anti-N IgG titers and time post-symptom onset for either CN or CC  
134 subjects (Fig. S5A). Studies have shown that IgG titers against N protein decline to undetectable  
135 levels in 40% of COVID convalescents within 4 months (Muecksch et al., 2021). We largely did  
136 not observe this decline in CN patients despite collecting their blood samples an average of 193  
137 days post-symptom onset (Fig. 1B).

138 *CD4<sup>+</sup> T cell polyfunctionality to Spike protein differs in neuro-PASC vs. healthy COVID*  
139 *convalescents*

140 Cytotoxic CD4<sup>+</sup> T cells acquire the ability to produce cytolytic granules upon activation  
141 with cognate viral antigen (Goubard et al., 2015; Sledzinska et al., 2020). Viral infections  
142 specifically induce expansion of the memory CD4<sup>+</sup> T effector memory cells re-expressing  
143 CD45RA (TEMRA) population that secrete copious amounts of cytolytic granules upon antigen



144 encounter (Tian et al., 2017). We therefore investigated whether Ag-specific production of  
145 multiple granzymes and cytokines in CD4<sup>+</sup> T cells were altered between groups. While CN and  
146 HC groups maintained polyfunctionality and polarization, CC subjects had significantly more  
147 polyfunctional CD4<sup>+</sup> T cells producing granzymes A, B, and M after Spike pool stimulation  
148 (category 2 in yellow, Fig. 3F). A heatmap quantifying this effect showed that CC had a 2-fold  
149 elevation in category 2 effector molecules over CN subjects (Fig. 3G). This data suggests that  
150 cytotoxic responses to Spike protein in CD4<sup>+</sup> T cells from healthy COVID-19 convalescents  
151 significantly differ from those experiencing chronic neurologic symptoms.

#### 152 *CD8<sup>+</sup> memory T cell functionality in neuro-PASC patients*

153 CD8<sup>+</sup> memory T cells are crucial for protection from recurrent viral infections (Mockus  
154 et al., 2019). Studies have shown that memory CD8<sup>+</sup> cells can persist for several years after  
155 patient exposure to SARS-CoV (Chen et al., 2005) and that acute mild disease induces stronger  
156 Ag-specific CD8<sup>+</sup> memory responses than severe disease (Peng et al., 2020). However, little is  
157 known about whether CD8<sup>+</sup> memory differs in neuro-PASC long-haulers vs. healthy COVID  
158 convalescents months after acute infection resolves. To address this, we probed the dynamics of  
159 CD8<sup>+</sup> TEM, TCM, and TEMRA activation in CN, CC, and HC subjects. CD8<sup>+</sup> TEM were  
160 significantly activated by various S, N, and M peptide pools in CC subjects while remaining  
161 relatively quiescent after antigen stimulation in CN patients (Fig. 4A-B). CD8<sup>+</sup> TEMRA are  
162 terminally differentiated memory cells with distinct transcriptional programs that respond  
163 quickly to viral infections (Tian et al., 2019). Total percentages of CD8<sup>+</sup> TEMRA cells were  
164 significantly elevated in CN compared with CC and HC groups (Fig. 4C), but despite their  
165 increased numbers, CD8<sup>+</sup> TEMRA cells were less activated by the S3/4 peptide pool in CN

166 patients and showed a trend towards decreased activation after N pool stimulation compared with  
167 CC subjects (Fig. 4D-E).

168 Similarly, antigen stimulation resulted in altered cytokine polarization in CD8<sup>+</sup> T cell  
169 subsets in CN and CC groups. Effector molecule production in CD8<sup>+</sup> T cells was similar across  
170 groups in the unstimulated condition, despite showing some statistically significant differences in  
171 perforin production (Fig. S6B). However, stimulation with the S3/4 pool induced greater TNF- $\alpha$   
172 production in the CC group while CN patients had enhanced IL-6 production to the same  
173 stimulus (Fig. 4F). S pool stimulation also induced CD8<sup>+</sup> TEMRA cells from the CC group to  
174 produce elevated levels of granzymes, which was not seen in CN or HC groups (Fig. 4G, black  
175 lines), demonstrating that CD8<sup>+</sup> T cell subsets display decreased functionality in CN vs. CC  
176 patients after stimulation.

177 *Impaired cognition and decreased quality of life metrics correlate with distinct patterns of*  
178 *polyfunctionality in memory T cell subsets*

179 Having shown that Tfh and T cell memory responses differed between patient groups,  
180 we next sought to probe whether within-group differences in T cell responses correlated with  
181 various clinical measures in CN patients. We found a significant positive correlation between the  
182 magnitude of IFN- $\gamma$  production to N protein and higher pain interference scores (Fig. 5A). There  
183 was also a trend towards a positive correlation between high scores for depression and the  
184 magnitude of the N-specific T cell response (Fig. 5B). To look at associations between clinical  
185 parameters and T cell activation, we separated T scores from NIH Toolbox or PROMIS-57  
186 measurements (Fig. 1C-D) into quartiles and only the lowest and highest groups (Q1 vs. Q4)  
187 were used for analysis (Fig. S7A, red boxes). CN subjects reporting high (Q4) pain interference  
188 scores produced significantly less granzyme A or B and more IL-6 than those with low scores

189 (Fig. 5C-D) from CD8<sup>+</sup> T cells after S pool stimulation. Further, patients reporting low  
190 depression scores had highly polyfunctional Spike-specific CD8<sup>+</sup> TEM, while those reporting  
191 high levels of depression had TEM producing ~3-fold higher granzymes A, B, and M alone  
192 (category 2; Fig. 5E, F). The severity of cognitive impairment could also be significantly  
193 correlated with T cell responses. Q1 patients scoring low on executive function tests had CD8<sup>+</sup>  
194 TCM polarized towards granzymes A, B, M and perforin production (category 1), while those in  
195 Q4 were biased to produce granzymes A, B, and perforin (Fig. 5G-H). Similar analyses were  
196 performed for other CD8<sup>+</sup> and CD4<sup>+</sup> memory T cell subsets, and significant differences by  
197 quartile were also found in correlations with depression, processing speed, working memory, and  
198 global pain (Fig. S7B-K). These data show that the severity of cognitive deficits or quality of life  
199 measures can be significantly correlated with differences in SARS-CoV-2-specific memory T  
200 cell function.

201 *SARS-CoV-2 vaccination induces sustained elevation in Spike-specific IFN- $\gamma$  responses in neuro-*  
202 *PASC but not healthy COVID convalescents*

203 SARS-CoV-2 mRNA vaccines have been proven to be highly effective against  
204 contracting infection in the short-term in both clinical trials and in real-world settings (Haas et  
205 al., 2021; Polack et al., 2020). However, neither clinical trials nor field studies specifically  
206 characterized the vaccine-induced immune response in long-COVID patients, and it is similarly  
207 unknown whether vaccination can ameliorate long-haul symptoms. One prospective study  
208 showed that vaccination did not significantly worsen symptoms in 22 patients with long-COVID  
209 (Arnold et al., 2021), but also did not provide evidence to show any decrease in symptoms. To  
210 address how vaccine-induced immunity evolves over time in neuro-PASC long-haulers, we  
211 conducted a longitudinal vaccine study assessing Spike-specific antibody and T cell responses

212 over the course of 6 months post-vaccination (study design and patient demographics in Fig. 6A-  
213 B). While this study is ongoing, we report data from the first 4 months comparing responses in  
214 CN, CC, and HC subjects (n for each group per study visit shown in Fig. S8). Vaccination with  
215 either Pfizer or Moderna mRNA vaccines induced robust SARS-CoV-2 Spike RBD IgG titers in  
216 all groups tested by 3 weeks post-2<sup>nd</sup> dose, with the highest titers found in CN patients. Antibody  
217 titers were at similar levels in all groups by 3 months post-1<sup>st</sup> dose, but trended higher in CN than  
218 in HC subjects at visit (V)4 (Fig. 6C). In parallel, we measured Spike-specific T cell responses in  
219 study subjects. The magnitude and kinetics of the T cell response in CC and HC subjects were  
220 similar and peaked at V3. However, CN patients had significantly elevated Spike-specific T cell  
221 responses compared with either HC or CC groups at V2 after the vaccination boost (Fig. 6D;  
222 individual pool data shown in Fig. S9). IFN- $\gamma$ -specific T cell responses remained high at 4  
223 months post-vaccination in CN patients while not significantly differing from pre-vaccination  
224 levels in both CC and HC subjects. To our knowledge, these are the first data that longitudinally  
225 compare the T cell response to vaccination in neuro-PASC patients with healthy COVID  
226 convalescents and unexposed individuals.

227 Overall, our study demonstrates that neuro-PASC patients have elevated IFN- $\gamma$  responses  
228 to N and M proteins, enhanced Ag-specific activation of Tfh cells, sustained anti-N IgG  
229 production, and deficient activation of multiple CD8<sup>+</sup> memory T cell subsets compared with  
230 healthy COVID-19 convalescents. There were also correlations between the severity of cognitive  
231 deficits or quality of life impairments and Ag-specific cytokine signatures (Fig. 5, S7).  
232 Importantly, vaccination resulted in sustained enhancements in the magnitude of Spike-specific  
233 T cell responses in neuro-PASC patients vs. all other groups, regardless of prior COVID  
234 exposure. Together, we show that CN patients exhibit a large-scale dysfunction in multiple

235 aspects of the memory T cell response which may inform treatment and/or vaccination options  
236 down the line.

## 237 **Discussion**

238 COVID-19 is well-recognized as a multi-organ disease with long-term sequelae  
239 associated with neurological disease. PASC has been reported in up to 87% of those hospitalized  
240 with SARS-CoV-2 pneumonia and in up to 40% of those with mild disease who do not require  
241 hospitalization (Havervall et al., 2021; Hirschtick et al., 2021; Mahase, 2020). SARS-CoV-2  
242 vaccines have decreased the rates of SARS-CoV-2 infection and mortality in unexposed  
243 individuals, but it is not clear that vaccines help to ameliorate long-COVID symptoms in  
244 previously infected individuals (Arnold et al., 2021) and thus further study is needed to inform  
245 treatment options. Long-term sequelae after other coronavirus infections can persist for years  
246 (Ahmed et al., 2020); therefore, it is important to specifically characterize SARS-CoV-2-specific  
247 immune responses in long-COVID patients. Most studies on effector and memory T cell  
248 responses to SARS-CoV-2 have focused on acute infection or healthy convalescents as opposed  
249 to those with long-COVID (Rodda et al., 2021; Sekine et al., 2020; Weiskopf et al., 2020). We  
250 aimed to fill this knowledge gap and determine whether and how T cell phenotype and function  
251 differ in patients with neuro-PASC and healthy COVID-19 convalescents.

252 Clinically, neuro-PASC resembles myalgic encephalomyelitis/chronic fatigue syndrome  
253 (ME/CFS), which many patients report as a post-viral infectious complication (Rasa et al., 2018).  
254 The causes of ME/CFS remain elusive, and the underlying mechanisms of neuro-PASC remain  
255 similarly unknown. It is possible that direct infection of the brain is responsible for neuro-PASC  
256 symptoms. It is believed that SARS-CoV-2 gains entry into the central nervous system through  
257 the olfactory bulb and has been shown to infect neurons in vitro, which is supported by findings  
258 of viral protein expression in cortical neurons from post-mortem autopsies (Klingenstein et al.,  
259 2020; Song et al., 2021). However, another study was unable to find any evidence of SARS-

260 CoV-2 in the brains of 4 patients with neurological symptoms during acute infection (Kantonen  
261 et al., 2020), suggesting that infection of the nervous system may be transient. Another study of  
262 acutely infected neuro-COVID patients did not find any SARS-CoV-2 RNA present in the CSF,  
263 though they did identify enhanced presence of exhausted T cells and dedifferentiated monocytes  
264 (Heming et al., 2021). However, all of these prior studies were conducted on patients with acute  
265 SARS-CoV-2 infection as opposed to neuro-PASC, and thus mechanisms for neurological  
266 dysfunction may differ. As lumbar punctures or brain biopsies are not indicated in neuro-PASC  
267 outpatients, reproducing the above study results in outpatient populations will not be possible.  
268 Additional hypotheses for neuro-PASC pathogenesis include a contribution of autoimmune  
269 mechanisms which is suggested by the skewed ratio of females to males affected, similar to that  
270 seen in rheumatoid arthritis or systemic lupus erythematosus (Chakravarty et al., 2007;  
271 Myasoedova et al., 2010), as well as the possibility of persistent SARS-CoV-2 infection in the  
272 periphery (Al-Aly et al., 2021). Much of our findings on the SARS-CoV-2 T cell response in  
273 neuro-PASC patients supports this latter hypothesis.

274 Ag-specific IFN- $\gamma$  and IL-2 production was similar between CN and CC groups in  
275 response to stimulation by different SARS-CoV-2 Spike peptide pools (Fig. 2A-B). However, T  
276 cells from CN patients retained high IFN- $\gamma$  responses to all N- and M-peptide pools tested, while  
277 CC subjects had a reactivity limited to N1 and N2 peptide pools with little IFN- $\gamma$  production in  
278 response to M pools (Fig. 2C-D). The presence of an immunodominance hierarchy in CC  
279 subjects is the expected outcome of an effective memory response to SARS-CoV-2 infection.  
280 Studies have shown that while a primary CD4<sup>+</sup> or CD8<sup>+</sup> T cell response to influenza A or LCMV  
281 infection is highly diverse and contains T cells reactive to many viral proteins and epitopes, the  
282 memory response preferentially contains T cells responding to specific immunodominant viral

283 antigens (Sant et al., 2018; Tebo et al., 2005). This effect is more pronounced in the CD8<sup>+</sup> T cell  
284 compartment where memory responses are dependent on the ability of dendritic cells to present  
285 viral antigen (Crowe et al., 2003) or on antigen availability (Henrickson et al., 2013). The  
286 evident lack of a narrow and targeted IFN- $\gamma$  response to N- and M-peptides in CN patients thus  
287 suggests that they are unable to effectively generate a memory response to SARS-CoV-2.  
288 Though there were no differences observed in the magnitude or specificity of the IFN- $\gamma$  response  
289 to SARS-CoV-2 Spike peptides, this is somewhat expected as memory T cell responses to Spike  
290 protein remain diverse after both infection (Grifoni et al., 2020) and vaccination (Alter et al.,  
291 2021). It is additionally not surprising that differences in reactivity were observed for IFN- $\gamma$  and  
292 not IL-2 T cell responses between CN and CC groups (Fig. 2B, E-F). Studies have demonstrated  
293 that while Ag-specific T cells produce IL-2 as a proliferation factor, IFN- $\gamma$  production is largely  
294 confined to the memory T cell population (Anthony et al., 2012), which is largely where we see  
295 differences in activation and reactivity between groups (Fig. 4).

296       Antibody production is a key outcome measure after SARS-CoV-2 infection, Tfh cell  
297 activation can inform the effectiveness of an antibody response. Stimulation with SARS-CoV-2  
298 N peptides activated Tfh cells in CN but not CC subjects, while the opposite trend was found  
299 with M pool stimulation (Fig. 3A-B). Tfh cell activation is crucial to the establishment of  
300 germinal centers in secondary lymphoid organs, ultimately resulting in B cell maturation into  
301 long-lived plasma cells that can continuously produce class-switched, high-affinity antibodies  
302 (Good-Jacobson and Shlomchik, 2010). Studies have demonstrated that the magnitude of the Tfh  
303 cell response is dependent on the amount of antigen available and directly correlates with the  
304 magnitude of the B cell response (Baumjohann et al., 2013). Indeed, the same CN patients with  
305 high N-specific Tfh cell activation also displayed anti-N IgG titers significantly greater than CC



306 subjects (Fig. 3E) despite the fact that we obtained their samples more than 6 months on average  
307 after acute infection. Altogether, these findings are consistent with the presence of a persisting  
308 nucleocapsid antigen reservoir resulting in enhanced N-specific Tfh cell activation in CN  
309 patients. Clinical reports have identified cases of persistent SARS-CoV-2 infection in the  
310 nasopharynx lasting up to 63 days (Bennasrallah et al., 2020) and many patients re-tested RT-  
311 PCR+ for SARS-CoV-2 up to 38 days post-discharge (Dao et al., 2021). Though many of our  
312 CN patients have not re-tested RT-PCR+ by nasal swab (data not shown), others have yet to be  
313 tested. The nasopharynx is not the only possible testing site, however, as there are numerous  
314 studies showing that infectious SARS-CoV-2 particles can be detected in fecal matter and can  
315 persist for up to 70 days post-symptom onset (Tian et al., 2020; van Doorn et al., 2020).  
316 Gastrointestinal symptoms also did not have to be present in order to test RT-PCR+ for SARS-  
317 CoV-2 in stool samples (Chen et al., 2020). Thus, it is possible that the gut may also act as a  
318 reservoir for persistent SARS-CoV-2 infection which leads to aberrant T cell responses and the  
319 development of neuro-PASC.

320         Effective generation of T cell memory responses is crucial to protect against future  
321 infections with the same pathogen. CD8<sup>+</sup> TEM cells from CC subjects retained high levels of  
322 activation to all S, N, and M pools assayed while CN patients displayed very little TEM  
323 activation (Fig. 4A-B), suggestive of aberrant memory T cell function. Studies on convalescents  
324 from the original SARS-CoV epidemic of 2002-03 found that the majority of Ag-specific CD8<sup>+</sup>  
325 memory T cells were TEM, and these persisted up to 4 years after infection (Channappanavar et  
326 al., 2014). Sterilizing immunity can be a precondition for the development and maintenance of  
327 memory T cells because high levels of foreign antigen favor the generation of short-lived  
328 effector cells (Mueller et al., 2013), which is why chronic infections often limit the formation

329 and/or function of memory T cells (Wherry, 2011). In fact, chronic LCMV infection in mice  
330 induced aberrantly functioning Ag-specific memory CD8<sup>+</sup> T cells requiring the presence of viral  
331 peptide rather than simply the homeostatic cytokines IL-7 and IL-15 to proliferate (Shin et al.,  
332 2007; Wherry et al., 2004). The inability of CD8<sup>+</sup> TEM to become activated by antigenic  
333 stimulation in CN patients is thus suggestive of a chronic infection state wherein viral antigen  
334 can persist but limits the formation of CD8<sup>+</sup> T cell memory. It is also possible that chronic  
335 SARS-CoV-2 infection in CN patients leads to memory T cell exhaustion, as shown in chronic  
336 HIV and HBV infections in humans (McLane et al., 2019). However, we did not find any  
337 differences in the inhibitory marker PD-1 expression on CD8<sup>+</sup> memory T cell subsets between  
338 CN and CC patients (data not shown).

339 Further providing support to the chronic infection hypothesis in neuro-PASC patients,  
340 there was a significant elevation in the CD8<sup>+</sup> TEMRA cell population in CN patients over CC or  
341 HC groups (Fig. 4C). CD8<sup>+</sup> TEMRA cells are a terminally differentiated memory subset that do  
342 not traffic through secondary lymphoid organs, and their induction during viral infection can be  
343 protective (Tian et al., 2019). Yet, they have also been shown to accumulate during persistent  
344 viral infections and contribute to immunosenescence (Derhovanessian et al., 2011). CD8<sup>+</sup>  
345 TEMRA cell reactivity to SARS-CoV-2 peptides was also decreased in CN patients over CC  
346 subjects. Functionally, the polarization in granzyme production in S3/4-specific CD8<sup>+</sup> TEMRA  
347 cells from CC patients (Fig. 4G) suggests higher cytotoxic capacity compared with CN patients  
348 and coincides with their higher activation state in Fig. 4E. Ag-specific CD8<sup>+</sup> TEMRA cells are  
349 expanded and functionally active in people with significant anti-Dengue virus immunity, and this  
350 phenotype is seen as a goal for vaccine-induced protection (Tian et al., 2019). We propose that  
351 CD8<sup>+</sup> TEMRA cells are more expanded but less functionally active in CN subjects over CC as a

352 consequence of inappropriate CD8<sup>+</sup> T cell memory formation, which is lacking in multiple T cell  
353 subsets for neuro-PASC patients.

354 We also showed that CD8<sup>+</sup> T cells from CC subjects skewed towards TNF- $\alpha$  production  
355 after S pool stimulation compared with CN patients. Comparatively, CN patients displayed  
356 significantly more IL-6 production from S-specific CD8<sup>+</sup> T cells (Fig. 4F). Vaccination against  
357 the intracellular pathogen *Shigella flexneri* showed that polyfunctional TNF- $\alpha$ -producing CD8<sup>+</sup>  
358 TEM were an important correlate of protection (Toapanta et al., 2018). Despite multiple reports  
359 indicating that enhanced TNF- $\alpha$  production is correlated with worse COVID-19 outcomes (Karki  
360 et al., 2020, 2021; Pedersen and Ho, 2020), we speculate that Ag-specific TNF- $\alpha$  production is  
361 protective in our model system because we are looking at chronically and not acutely infected  
362 CN patients. In contrast, IL-6 is known to suppress T<sub>H</sub>1 differentiation (Diehl et al., 2000) and  
363 can promote pathogen survival and exacerbate clinical disease during the original SARS-CoV  
364 infection (Channappanavar and Perlman, 2017). Indeed, studies in severely ill, hospitalized  
365 COVID-19 patients demonstrated that high serum levels of IL-6 significantly correlated with  
366 poor clinical outcome (Weiskopf et al., 2020). These data suggest a role for enhanced IL-6  
367 production by CD8<sup>+</sup> T cells in the pathogenesis of neuro-PASC, and open new avenues of  
368 research for the treatment of long-COVID through limiting IL-6 activity.

369 Clinically, neuro-PASC patients reported significantly elevated levels of anxiety,  
370 depression, fatigue, sleep disturbance and pain as well as decreased physical function compared  
371 with healthy convalescents (Fig. 1C). The severity of these deficits was highly correlated with  
372 Ag-specific enhancements in polyfunctionality and decreases in polarization of various memory  
373 T cell subsets (Fig. 5, S7). It is possible that T cell function contributes to the genesis and  
374 persistence of some of these symptoms. Studies in rodents have shown that T cell activation and

375 function can affect the severity of pain and analgesia (Rosen et al., 2019; Sorge et al., 2015).  
376 Indeed, pain is a common hallmark of chronic viral infection (Addis et al., 2020) and recognized  
377 among post-COVID sequelae (Kemp et al., 2020); it might follow then that aberrant T cell  
378 activation can associate with high pain scores. Additionally, reports have shown that  
379 transcriptional programs in immunity and inflammation were differentially regulated in CD4<sup>+</sup> T  
380 cells from patients with depression compared with healthy controls (Wang et al., 2015). T<sub>reg</sub> cells  
381 may also decrease depressive behavior through negative regulation of inflammation (Miller,  
382 2010), and CN patients do display elevated T<sub>H1</sub>-type cytokine production to S pool stimulation  
383 (Fig. 2, 6) while not displaying any compensatory upregulation in T<sub>reg</sub> total numbers or function  
384 (data not shown). T cell-derived cytokines can also impact learning and memory. Studies in  
385 mouse models of West Nile and Zika viral encephalitis have demonstrated that IFN- $\gamma$  production  
386 from CD8<sup>+</sup> T cells in the brain is responsible for neuronal apoptosis and spatial learning deficits  
387 (Garber et al., 2019). Thus, there is a precedent for correlating T cell function with cognitive  
388 deficits, pain, or depression. Ag-specific cytokine signatures associated with the severity of  
389 cognitive and quality of life deficits in neuro-PASC patients may therefore provide some  
390 predictive value in terms of clinical outcomes.

391 Preliminary reports showed that the Pfizer mRNA vaccine could elicit a T cell response 7  
392 days after completion of the full prime-boost protocol (Sahin et al., 2020), but until our studies  
393 there has been no data on longitudinal T cell responses primed by vaccination and how these  
394 vary between groups with different types of prior SARS-CoV-2 exposure. Our results  
395 demonstrate for the first time that vaccine-elicited immune responses are significantly divergent  
396 in neuro-PASC versus healthy COVID convalescents (Fig. 6C-D). CN patients consistently had  
397 higher antibody titers after receiving the second dose of the vaccine compared with CC and HC

398 groups, though titers were similar in all groups at 11-15 weeks post-1<sup>st</sup> dose (Fig. 6C). In  
399 contrast, the magnitude of Spike-specific IFN- $\gamma$  production by T cells remained high in CN  
400 patients out to 4 months post-vaccination while not significantly higher than pre-vaccination  
401 levels in CC and HC subjects along the same timeline (Fig. 6D). These data suggest that the  
402 mRNA vaccines do not induce robust long-term T cell responses in many individuals, regardless  
403 of prior COVID exposure, if they are not neuro-PASC patients. Yet, despite vaccines enhancing  
404 Spike-specific IFN- $\gamma$  production in CN T cells, the fact that these responses continue to increase  
405 at 15 weeks post-vaccination suggests that CN patients may still have an active SARS-CoV-2  
406 infection or a persistent antigen reservoir rather than developing a robust T cell memory  
407 response. These results suggest that alternate SARS-CoV-2 vaccines that induce long-lasting  
408 memory T cell responses in previously unexposed individuals as well as healthy COVID  
409 convalescents are needed in order to mediate long-term protection from infection. Conversely,  
410 vaccination may not be indicated for long-COVID patients who might have a persistent infection  
411 as it may be ineffective in the absence of viral clearance. Indeed, current clinical guidance from  
412 the CDC recommends that vaccination be delayed until 3 months after acute infection in  
413 unvaccinated COVID convalescents. Thus, vaccination strategies that include the memory T cell  
414 response as a marker for efficacy should be carefully considered. Together, these data show that  
415 irregular Tfh responses, broad scale dysfunction in CD8<sup>+</sup> T cell memory generation and aberrant  
416 T cell responses to vaccination are hallmarks of neuro-PASC and require further study to inform  
417 treatment and vaccination strategies across the population.

#### 418 **Limitations of study**

419 One limitation of our study is the relatively small sample size of unvaccinated neuro-  
420 PASC patients. This was due to the wide implementation of SARS-CoV-2 vaccines in the

421 Chicago area soon after beginning study enrollment. Another limitation was not being able to  
422 control for time of sample collection with respect to date of COVID-19 symptom onset. As it is  
423 possible that neuro-PASC could be the result of a persistent infection, further investigations  
424 would require testing of potential cryptic reservoirs, including stool samples from CN patients.  
425

## 426 **Materials and Methods**

### 427 *Ethics Statement*

428 This study was approved by the Northwestern University Institutional Review Board (Koralnik  
429 Lab, IRB STU00212583). Informed consent was obtained from all enrolled participants. Samples  
430 were de-identified before banking.

### 431 *Study participants, NIH Toolbox, and PROMIS-57 data collection*

432 We enrolled consenting unvaccinated adult outpatients seen in the Neuro-PASC-19 clinic at  
433 Northwestern Memorial Hospital from September 2020-June 2021, including 56 neuro-PASC  
434 “long-hauler” patients with documented PCR+ or seropositive IgG results for SARS-CoV-2  
435 (CN). In parallel, we recruited 24 unvaccinated healthy COVID convalescents from the  
436 surrounding community who tested PCR+ for SARS-CoV-2 but had no lingering neurological  
437 symptoms (CC) and 31 healthy controls who tested PCR- for SARS-CoV-2 and were also  
438 seronegative for IgG against SARS-CoV-2 Spike RBD. All study subjects remained living  
439 throughout the period of observation. Heparinized blood samples were collected one time from  
440 each subject at an average of 155-315 days post-symptom onset (as in Fig. 1B). Other  
441 demographic information is contained in Fig. 1B. CN patients completed a cognitive function  
442 evaluation in the clinic coincident or near the date of their blood sample acquisition with the  
443 National Institutes of Health (NIH) Toolbox v2.1 instrument, including assessments of:  
444 processing speed (pattern comparison processing speed test); attention and executive memory  
445 (inhibitory control and attention test); executive function (dimensional change card sort test); and  
446 working memory (list sorting working memory test) (Lai et al., 2011; Weintraub et al., 2013).  
447 PROMIS-57 was administered to CN and CC patients an average of 72 days post-sample

448 collection. Both PROMIS-57 and NIH Toolbox results are expressed as T-scores adjusted for  
449 age, education, gender, and race/ethnicity with a score of 50 representing the normative  
450 mean/median of the US reference population with a standard deviation of 10. Lower cognition T-  
451 scores indicate worse performance while higher fatigue, depression, anxiety, or pain interference  
452 T-scores indicate greater symptom severity.

#### 453 *PBMC and plasma collection*

454 30mL of venous blood from study volunteers was collected in blood collection tubes containing  
455 sodium heparin from BD Biosciences. Whole blood was layered on top of 15mL of Histopaque  
456 1077 (Sigma-Aldrich) in 50mL Leucosep blood separation tubes (Greiner Bio-One) and spun at  
457 1000g for 18min at RT. Plasma was collected and stored at -80°C. The PBMC layer was  
458 collected and washed 2x in sterile PBS before red blood cell lysis with ACK buffer (Quality  
459 Biologicals). PBMCs were used in assays either immediately or frozen down for use in the near  
460 term.

#### 461 *SARS-CoV-2 peptide antigens*

462 All S, N and M peptide arrays used in ELISPOT and flow cytometry studies were obtained from  
463 BEI Resources, NIAID, NIH: Peptide Array, SARS-Related Coronavirus 2 Spike (S) Protein;  
464 NR-52402, Nucleocapsid (N) Protein, NR-52404; Membrane (M) Protein, NR-52403. The S  
465 peptide array consisted of 181 peptides of 13-17aa in length and split into 6 sub-pools (S1-S6)  
466 containing 30-31 peptides each. The N peptide array consisted of 59 peptides of 13-17aa each  
467 split into 3 sub-pools containing 29-30 peptides each. The M peptide array consisted of 31  
468 peptides of 12-17aa and split into 3 sub-pools of 10-11 peptides each (Fig. S1). All peptides were



469 dissolved in either sterile H<sub>2</sub>O or 50% sterile H<sub>2</sub>O-DMSO up to 1mL for a universal 1mg/mL  
470 stock concentration. Peptides were used at a final concentration at 2µg/mL in all assays.

#### 471 *IgG Spike RBD and Nucleocapsid ELISA*

472 Antigen-specific total antibody titers were measured by ELISA as described previously (Dangi et  
473 al., 2020; Palacio et al., 2020). In brief, 96-well flat-bottom MaxiSorp plates (Thermo Scientific)  
474 were coated with 1 µg/ml of Spike RBD for 48 hr at 4°C. Plates were washed three times with  
475 wash buffer (PBS + 0.05% Tween 20). Blocking was performed with blocking solution (PBS +  
476 0.05% Tween 20 + 2% bovine serum albumin), for 4 hr at room temperature. 6 µl of sera was  
477 added to 144 µl of blocking solution in the first column of the plate, 1:3 serial dilutions were  
478 performed until row 12 for each sample, and plates were incubated for 60 min at room  
479 temperature. Plates were washed three times with wash buffer followed by addition of secondary  
480 antibody conjugated to horseradish peroxidase, goat anti-human IgG (H + L) (Jackson  
481 ImmunoResearch) diluted in blocking solution (1:1000) and 100 µl/well was added and  
482 incubated for 60 min at room temperature. After washing plates three times with wash buffer,  
483 100 µl/well of Sure Blue substrate (SeraCare) was added for 1 min. Reaction was stopped using  
484 100 µl/well of KPL TMB Stop Solution (SeraCare). Absorbance was measured at 450 nm using  
485 a Spectramax Plus 384 (Molecular Devices). SARS-CoV-2 RBD and N proteins used for ELISA  
486 were produced at the Northwestern Recombinant Protein Production Core by Dr. Sergii  
487 Pshenychnyi using plasmids that were produced under HHSN272201400008C and obtained from  
488 BEI Resources, NIAID, NIH: Vector pCAGGS containing the SARS-related coronavirus 2,  
489 Wuhan-Hu-1 spike glycoprotein gene (soluble, stabilized), NR-52394 and receptor binding  
490 domain (RBD), NR-52309, nucleocapsid gene NR-53507.

#### 491 *Cell stimulation and IFN-γ/IL-2 ELISPOT*

492 Multiscreen-IP plates (Millipore-Sigma) were coated overnight at 4°C with 2µg/mL anti-IFN-γ  
493 (clone 1-D1K, Mabtech) or 5µg/mL anti-IL-2 (clone MT2A91/2C95, Mabtech), washed with  
494 sterile PBS, and blocked with complete RPMI-10% FBS. PBMC isolated from CN, CC, and HC  
495 subjects were used either freshly isolated or after thawing and resting overnight in media  
496 containing 10ng/µL recombinant human IL-15 (Peprotech) at 37°C, 5% CO<sub>2</sub>. Cells were then  
497 plated at a concentration of 2.5x10<sup>5</sup> cells/well in 100µL of media and stimulated with the  
498 indicated antigen mixtures from SARS-CoV-2 at a concentration of 2µg/mL in complete RPMI  
499 medium containing 5% human AB serum (Sigma-Aldrich) and 5ng/mL IL-15. Plates were  
500 incubated at 37°C, 5% CO<sub>2</sub> for 20 h and washed 5x with dH<sub>2</sub>O and PBS-0.05% Tween-20 (PBS-  
501 T). 2µg/mL biotinylated IFN-γ (clone 7-B6-1, Mabtech) or 5µg/mL IL-2 (clone MT8G10,  
502 Mabtech) diluted in PBS-10% FBS (PBS-F) was added to the respective wells and plates were  
503 incubated for 1.5h at RT. Plates were subsequently incubated for 40 minutes at RT in  
504 streptavidin-alkaline phosphatase in PBS-F (Jackson ImmunoResearch) was added after washing  
505 plates 5x in PBS-T. ELISPOT plates were developed using an Alkaline Phosphatase Conjugate  
506 Substrate Kit according to manufacturer's instructions (Bio-Rad Laboratories, Carlsbad, CA).  
507 IFN-γ or IL-2-producing cells were quantified using an ImmunoSpot reader (Cellular  
508 Technologies, Ltd., Shaker Heights, OH).

#### 509 *Antibodies and Flow Cytometry*

510 Fresh or frozen PBMCs isolated from the indicated patient groups were stimulated with antigen  
511 mixtures as above for 20-22h at 37°C, 5% CO<sub>2</sub>. For intracellular staining and cytokine detection,  
512 the Brefeldin-A Golgi plug (Biolegend) was added at a 1:1000 concentration 2 hours after  
513 antigenic stimulation commenced. Cells were washed with PBS-1% BSA after incubation and  
514 incubated with the indicated antibodies for surface phenotyping by AIM assay or for intracellular

515 cytokine staining (ICS). Cells from each subject were left unstimulated in medium containing  
516 5ng/mL IL-15 (“background”) or stimulated in the presence of the indicated antigens. Fixation  
517 and permeabilization was performed using Cytofix/Cytoperm (BD Biosciences). Surface staining  
518 was done in the dark at 4°C for 30 minutes, while ICS was done in the dark at RT for 45  
519 minutes. Flow cytometry was conducted on 2-5x10<sup>5</sup> cells per condition. Data was acquired on a  
520 BD FACSymphony Spectral analyzer and analyzed using FlowJo v10 (BD Biosciences) and  
521 SPICE-Pestle (Roederer et al., 2011).

### 522 *Quantification and Statistical Analysis*

523 Statistical tests to determine significance are described in figure legends and conducted largely in  
524 Prism (GraphPad). For pie graphs or heatmaps generated using SPICE analysis, statistics were  
525 determined by Permutation test following unstimulated background subtraction, with additional  
526 thresholding of 0.03% to account for noise, using SPICE-Pestle. *P*-values lower than 0.05 were  
527 considered statistically significant. Quantile stratification was performed within group for CN  
528 cohort. Clinical data were collected and managed using REDCap electronic data capture tools  
529 hosted at Northwestern University Feinberg School of Medicine (Harris et al., 2009). REDCap  
530 (Research Electronic Data Capture) is a secure, web-based software platform designed to support  
531 data capture for research studies, providing 1) an intuitive interface for validated data capture; 2)  
532 audit trails for tracking data manipulation and export procedures; 3) automated export procedures  
533 for seamless data downloads to common statistical packages; and 4) procedures for data  
534 integration and interoperability with external sources.

535

536

537 **Acknowledgements**

538 We would like to thank the Flow Cytometry Core Facility at the Robert H. Lurie Comprehensive  
539 Cancer Center at Northwestern University supported by Cancer Center Support Grant (NCI  
540 CA060553) for their assistance in optimizing antibody panels and help with flow cytometry  
541 instrumentation. L.V. was supported by a T32 grant T32AR007611 from the Department of  
542 Rheumatology, Northwestern University Feinberg School of Medicine. P.P.M. is supported by a  
543 grant from the Emerging and Re-Emerging Pathogens Program (EREPP) at Northwestern  
544 University, and a grant from the National Institute on Drug Abuse (NIDA, DP2DA051912).

545

546 **Author Contributions**

547 Conceptualization L.V. P.P.M. and I.K.; Investigation L.V., B.H., Z.O., P.H.L, and N.P.; Formal  
548 Analysis L.V., B.H., E.M.L., P.P.M. and N.P.; Resources L.V., P.P.M., I.K., Data Curation L.V.;  
549 Writing L.V. with feedback from all authors; Supervision P.P.M and I.K.; Project Administration  
550 L.V.; Funding Acquisition L.V., P.P.M, and I.K.

551

552 **Declaration of Interests**

553 The authors declare no competing interests.

554

555

556

557 **References**

- 558 Addis, D.R., DeBerry, J.J., and Aggarwal, S. (2020). Chronic Pain in HIV. *Mol Pain* 16,  
559 1744806920927276.
- 560 Ahmed, H., Patel, K., Greenwood, D.C., Halpin, S., Lewthwaite, P., Salawu, A., Eyre, L., Breen,  
561 A., O'Connor, R., Jones, A., *et al.* (2020). Long-term clinical outcomes in survivors of severe  
562 acute respiratory syndrome and Middle East respiratory syndrome coronavirus outbreaks after  
563 hospitalisation or ICU admission: A systematic review and meta-analysis. *J Rehabil Med* 52,  
564 jrm00063.
- 565 Al-Aly, Z., Xie, Y., and Bowe, B. (2021). High-dimensional characterization of post-acute  
566 sequelae of COVID-19. *Nature* 594, 259-264.
- 567 Alter, G., Yu, J., Liu, J., Chandrashekar, A., Borducchi, E.N., Tostanoski, L.H., McMahan, K.,  
568 Jacob-Dolan, C., Martinez, D.R., Chang, A., *et al.* (2021). Immunogenicity of Ad26.COV2.S  
569 vaccine against SARS-CoV-2 variants in humans. *Nature*.
- 570 Anthony, D.D., Milkovich, K.A., Zhang, W., Rodriguez, B., Yonkers, N.L., Tary-Lehmann, M.,  
571 and Lehmann, P.V. (2012). Dissecting the T Cell Response: Proliferation Assays vs. Cytokine  
572 Signatures by ELISPOT. *Cells* 1, 127-140.
- 573 Arnold, D.T., Milne, A., Samms, E., Staddon, L., Maskell, N.A., and Hamilton, F.W. (2021).  
574 Symptoms After COVID-19 Vaccination in Patients With Persistent Symptoms After Acute  
575 Infection: A Case Series. *Ann Intern Med*.
- 576 Baumjohann, D., Preite, S., Reboldi, A., Ronchi, F., Ansel, K.M., Lanzavecchia, A., and  
577 Sallusto, F. (2013). Persistent antigen and germinal center B cells sustain T follicular helper cell  
578 responses and phenotype. *Immunity* 38, 596-605.

579 Bennisrallah, C., Bannour, R., Jlassi, O., Kacem, M., Fredj, M.B., Abroug, H., Zemni, I.,  
580 Garrach, B., Bahri, R., Charfeddine, N., *et al.* (2020). Three COVID-19 cases with a long-term  
581 viral shedding period in Tunisia. *Pan Afr Med J* 35, 117.

582 Center, J.C.R. (2021). Cumulative worldwide Covid-19 cases (Baltimore, MD: Johns Hopkins  
583 University of Medicine).

584 Chakravarty, E.F., Bush, T.M., Manzi, S., Clarke, A.E., and Ward, M.M. (2007). Prevalence of  
585 adult systemic lupus erythematosus in California and Pennsylvania in 2000: estimates obtained  
586 using hospitalization data. *Arthritis Rheum* 56, 2092-2094.

587 Channappanavar, R., and Perlman, S. (2017). Pathogenic human coronavirus infections: causes  
588 and consequences of cytokine storm and immunopathology. *Semin Immunopathol* 39, 529-539.

589 Channappanavar, R., Zhao, J., and Perlman, S. (2014). T cell-mediated immune response to  
590 respiratory coronaviruses. *Immunol Res* 59, 118-128.

591 Chen, H., Hou, J., Jiang, X., Ma, S., Meng, M., Wang, B., Zhang, M., Zhang, M., Tang, X.,  
592 Zhang, F., *et al.* (2005). Response of memory CD8<sup>+</sup> T cells to severe acute respiratory syndrome  
593 (SARS) coronavirus in recovered SARS patients and healthy individuals. *J Immunol* 175, 591-  
594 598.

595 Chen, Y., Chen, L., Deng, Q., Zhang, G., Wu, K., Ni, L., Yang, Y., Liu, B., Wang, W., Wei, C.,  
596 *et al.* (2020). The presence of SARS-CoV-2 RNA in the feces of COVID-19 patients. *J Med*  
597 *Virol* 92, 833-840.

598 Crowe, S.R., Turner, S.J., Miller, S.C., Roberts, A.D., Rappolo, R.A., Doherty, P.C., Ely, K.H.,  
599 and Woodland, D.L. (2003). Differential antigen presentation regulates the changing patterns of  
600 CD8<sup>+</sup> T cell immunodominance in primary and secondary influenza virus infections. *J Exp Med*  
601 198, 399-410.

602 Dao, T.L., Hoang, V.T., and Gautret, P. (2021). Recurrence of SARS-CoV-2 viral RNA in  
603 recovered COVID-19 patients: a narrative review. *Eur J Clin Microbiol Infect Dis* 40, 13-25.

604 Derhovanessian, E., Maier, A.B., Hahnel, K., Beck, R., de Craen, A.J.M., Slagboom, E.P.,  
605 Westendorp, R.G.J., and Pawelec, G. (2011). Infection with cytomegalovirus but not herpes  
606 simplex virus induces the accumulation of late-differentiated CD4<sup>+</sup> and CD8<sup>+</sup> T-cells in  
607 humans. *J Gen Virol* 92, 2746-2756.

608 Diehl, S., Anguita, J., Hoffmeyer, A., Zapton, T., Ihle, J.N., Fikrig, E., and Rincon, M. (2000).  
609 Inhibition of Th1 differentiation by IL-6 is mediated by SOCS1. *Immunity* 13, 805-815.

610 Duan, Y.Q., Xia, M.H., Ren, L., Zhang, Y.F., Ao, Q.L., Xu, S.P., Kuang, D., Liu, Q., Yan, B.,  
611 Zhou, Y.W., *et al.* (2020). Deficiency of Tfh Cells and Germinal Center in Deceased COVID-19  
612 Patients. *Curr Med Sci* 40, 618-624.

613 Garber, C., Soung, A., Vollmer, L.L., Kanmogne, M., Last, A., Brown, J., and Klein, R.S.  
614 (2019). T cells promote microglia-mediated synaptic elimination and cognitive dysfunction  
615 during recovery from neuropathogenic flaviviruses. *Nat Neurosci* 22, 1276-1288.

616 Good-Jacobson, K.L., and Shlomchik, M.J. (2010). Plasticity and heterogeneity in the generation  
617 of memory B cells and long-lived plasma cells: the influence of germinal center interactions and  
618 dynamics. *J Immunol* 185, 3117-3125.

619 Goubard, A., Loiez, C., Abe, J., Fichel, C., Herwegh, S., Faveeuw, C., Porte, R., Cayet, D.,  
620 Sebbane, F., Penet, S., *et al.* (2015). Superantigenic *Yersinia pseudotuberculosis* induces the  
621 expression of granzymes and perforin by CD4<sup>+</sup> T cells. *Infect Immun* 83, 2053-2064.

622 Graham, E.L., Clark, J.R., Orban, Z.S., Lim, P.H., Szymanski, A.L., Taylor, C., DiBiase, R.M.,  
623 Jia, D.T., Balabanov, R., Ho, S.U., *et al.* (2021). Persistent neurologic symptoms and cognitive  
624 dysfunction in non-hospitalized Covid-19 "long haulers". *Ann Clin Transl Neurol* 8, 1073-1085.

625 Grifoni, A., Weiskopf, D., Ramirez, S.I., Mateus, J., Dan, J.M., Moderbacher, C.R., Rawlings,  
626 S.A., Sutherland, A., Premkumar, L., Jadi, R.S., *et al.* (2020). Targets of T Cell Responses to  
627 SARS-CoV-2 Coronavirus in Humans with COVID-19 Disease and Unexposed Individuals. *Cell*  
628 *181*, 1489-1501 e1415.

629 Haas, E.J., Angulo, F.J., McLaughlin, J.M., Anis, E., Singer, S.R., Khan, F., Brooks, N., Smaja,  
630 M., Mircus, G., Pan, K., *et al.* (2021). Impact and effectiveness of mRNA BNT162b2 vaccine  
631 against SARS-CoV-2 infections and COVID-19 cases, hospitalisations, and deaths following a  
632 nationwide vaccination campaign in Israel: an observational study using national surveillance  
633 data. *Lancet* *397*, 1819-1829.

634 Halpin, S.J., McIvor, C., Whyatt, G., Adams, A., Harvey, O., McLean, L., Walshaw, C., Kemp,  
635 S., Corrado, J., Singh, R., *et al.* (2021). Postdischarge symptoms and rehabilitation needs in  
636 survivors of COVID-19 infection: A cross-sectional evaluation. *J Med Virol* *93*, 1013-1022.

637 Hampshire, A., Trender W., Chamberlain SR, Jolly AE, Grant JE, Patrick F, Mazibuko N,  
638 Williams S, Barnaby JM, Hellyer H, Mehta MA. (2021). Cognitive deficits in people who have  
639 recovered from COVID-19. *EClinicalMedicine*.

640 Harris, P.A., Taylor, R., Thielke, R., Payne, J., Gonzalez, N., and Conde, J.G. (2009). Research  
641 electronic data capture (REDCap)--a metadata-driven methodology and workflow process for  
642 providing translational research informatics support. *J Biomed Inform* *42*, 377-381.

643 Havervall, S., Rosell, A., Phillipson, M., Mangsbo, S.M., Nilsson, P., Hober, S., and Thalin, C.  
644 (2021). Symptoms and Functional Impairment Assessed 8 Months After Mild COVID-19  
645 Among Health Care Workers. *JAMA* *325*, 2015-2016.

646 Heming, M., Li, X., Rauber, S., Mausberg, A.K., Borsch, A.L., Hartlehnert, M., Singhal, A., Lu,  
647 I.N., Fleischer, M., Szepanowski, F., *et al.* (2021). Neurological Manifestations of COVID-19



648 Feature T Cell Exhaustion and Dedifferentiated Monocytes in Cerebrospinal Fluid. *Immunity* 54,  
649 164-175 e166.

650 Henrickson, S.E., Perro, M., Loughhead, S.M., Senman, B., Stutte, S., Quigley, M., Alexe, G.,  
651 Iannacone, M., Flynn, M.P., Omid, S., *et al.* (2013). Antigen availability determines CD8(+) T  
652 cell-dendritic cell interaction kinetics and memory fate decisions. *Immunity* 39, 496-507.

653 Higgins, V., Sohaei, D., Diamandis, E.P., and Prassas, I. (2020). COVID-19: from an acute to  
654 chronic disease? Potential long-term health consequences. *Crit Rev Clin Lab Sci*, 1-23.

655 Hirschtick, J.L., Titus, A.R., Slocum, E., Power, L.E., Hirschtick, R.E., Elliott, M.R., McKane,  
656 P., and Fleischer, N.L. (2021). Population-based estimates of post-acute sequelae of SARS-CoV-  
657 2 infection (PASC) prevalence and characteristics. *Clin Infect Dis*.

658 Kantonen, J., Mahzabin, S., Mayranpaa, M.I., Tynninen, O., Paetau, A., Andersson, N., Sajantila,  
659 A., Vapalahti, O., Carpen, O., Kekalainen, E., *et al.* (2020). Neuropathologic features of four  
660 autopsied COVID-19 patients. *Brain Pathol* 30, 1012-1016.

661 Karki, R., Sharma, B.R., Tuladhar, S., Williams, E.P., Zalduondo, L., Samir, P., Zheng, M.,  
662 Sundaram, B., Banoth, B., Malireddi, R.K.S., *et al.* (2020). COVID-19 cytokines and the  
663 hyperactive immune response: Synergism of TNF-alpha and IFN-gamma in triggering  
664 inflammation, tissue damage, and death. *bioRxiv*.

665 Karki, R., Sharma, B.R., Tuladhar, S., Williams, E.P., Zalduondo, L., Samir, P., Zheng, M.,  
666 Sundaram, B., Banoth, B., Malireddi, R.K.S., *et al.* (2021). Synergism of TNF-alpha and IFN-  
667 gamma Triggers Inflammatory Cell Death, Tissue Damage, and Mortality in SARS-CoV-2  
668 Infection and Cytokine Shock Syndromes. *Cell* 184, 149-168 e117.

669 Kemp, H.I., Corner, E., and Colvin, L.A. (2020). Chronic pain after COVID-19: implications for  
670 rehabilitation. *Br J Anaesth* 125, 436-440.

671 Klingenstein, M., Klingenstein, S., Neckel, P.H., Mack, A.F., Wagner, A.P., Kleger, A., Liebau,  
672 S., and Milazzo, A. (2020). Evidence of SARS-CoV2 Entry Protein ACE2 in the Human Nose  
673 and Olfactory Bulb. *Cells Tissues Organs* 209, 155-164.

674 Ladds, E., Rushforth, A., Wieringa, S., Taylor, S., Rayner, C., Husain, L., and Greenhalgh, T.  
675 (2020). Persistent symptoms after Covid-19: qualitative study of 114 "long Covid" patients and  
676 draft quality principles for services. *BMC Health Serv Res* 20, 1144.

677 Lai, J.S., Cella, D., Choi, S., Junghaenel, D.U., Christodoulou, C., Gershon, R., and Stone, A.  
678 (2011). How item banks and their application can influence measurement practice in  
679 rehabilitation medicine: a PROMIS fatigue item bank example. *Arch Phys Med Rehabil* 92, S20-  
680 27.

681 Lam, M.H., Wing, Y.K., Yu, M.W., Leung, C.M., Ma, R.C., Kong, A.P., So, W.Y., Fong, S.Y.,  
682 and Lam, S.P. (2009). Mental morbidities and chronic fatigue in severe acute respiratory  
683 syndrome survivors: long-term follow-up. *Arch Intern Med* 169, 2142-2147.

684 Le Bert, N., Tan, A.T., Kunasegaran, K., Tham, C.Y.L., Hafezi, M., Chia, A., Chng, M.H.Y.,  
685 Lin, M., Tan, N., Linster, M., *et al.* (2020). SARS-CoV-2-specific T cell immunity in cases of  
686 COVID-19 and SARS, and uninfected controls. *Nature* 584, 457-462.

687 Li, Y.C., Bai, W.Z., and Hashikawa, T. (2020). The neuroinvasive potential of SARS-CoV2 may  
688 play a role in the respiratory failure of COVID-19 patients. *J Med Virol* 92, 552-555.

689 Liguori, C., Pierantozzi, M., Spanetta, M., Sarmati, L., Cesta, N., Iannetta, M., Ora, J., Mina,  
690 G.G., Puxeddu, E., Balbi, O., *et al.* (2020). Subjective neurological symptoms frequently occur  
691 in patients with SARS-CoV2 infection. *Brain Behav Immun* 88, 11-16.

692 Mahase, E. (2020). Covid-19: What do we know about "long covid"? *BMJ* 370, m2815.

693 McLane, L.M., Abdel-Hakeem, M.S., and Wherry, E.J. (2019). CD8 T Cell Exhaustion During  
694 Chronic Viral Infection and Cancer. *Annu Rev Immunol* 37, 457-495.

695 McMahan, K., Yu, J., Mercado, N.B., Loos, C., Tostanoski, L.H., Chandrashekar, A., Liu, J.,  
696 Peter, L., Atyeo, C., Zhu, A., *et al.* (2021). Correlates of protection against SARS-CoV-2 in  
697 rhesus macaques. *Nature* 590, 630-634.

698 Meckiff, B.J., Ramirez-Suastegui, C., Fajardo, V., Chee, S.J., Kusnadi, A., Simon, H.,  
699 Eschweiler, S., Grifoni, A., Pelosi, E., Weiskopf, D., *et al.* (2020). Imbalance of Regulatory and  
700 Cytotoxic SARS-CoV-2-Reactive CD4(+) T Cells in COVID-19. *Cell* 183, 1340-1353 e1316.

701 Miller, A.H. (2010). Depression and immunity: a role for T cells? *Brain Behav Immun* 24, 1-8.

702 Mockus, T.E., Ren, H.M., Shwetank, and Lukacher, A.E. (2019). To Go or Stay: The  
703 Development, Benefit, and Detriment of Tissue-Resident Memory CD8 T Cells during Central  
704 Nervous System Viral Infections. *Viruses* 11.

705 Muecksch, F., Wise, H., Batchelor, B., Squires, M., Semple, E., Richardson, C., McGuire, J.,  
706 Clearly, S., Furrie, E., Greig, N., *et al.* (2021). Longitudinal Serological Analysis and  
707 Neutralizing Antibody Levels in Coronavirus Disease 2019 Convalescent Patients. *J Infect Dis*  
708 223, 389-398.

709 Mueller, S.N., Gebhardt, T., Carbone, F.R., and Heath, W.R. (2013). Memory T cell subsets,  
710 migration patterns, and tissue residence. *Annu Rev Immunol* 31, 137-161.

711 Myasoedova, E., Crowson, C.S., Kremers, H.M., Therneau, T.M., and Gabriel, S.E. (2010). Is  
712 the incidence of rheumatoid arthritis rising?: results from Olmsted County, Minnesota, 1955-  
713 2007. *Arthritis Rheum* 62, 1576-1582.

714 Pedersen, S.F., and Ho, Y.C. (2020). SARS-CoV-2: a storm is raging. *J Clin Invest* 130, 2202-  
715 2205.

716 Peng, Y., Mentzer, A.J., Liu, G., Yao, X., Yin, Z., Dong, D., Dejnirattisai, W., Rostron, T.,  
717 Supasa, P., Liu, C., *et al.* (2020). Broad and strong memory CD4(+) and CD8(+) T cells induced  
718 by SARS-CoV-2 in UK convalescent individuals following COVID-19. *Nat Immunol* *21*, 1336-  
719 1345.

720 Petersen, M.S., Kristiansen, M.F., Hanusson, K.D., Danielsen, M.E., B, A.S., Gaini, S., Strom,  
721 M., and Weihe, P. (2020). Long COVID in the Faroe Islands - a longitudinal study among non-  
722 hospitalized patients. *Clin Infect Dis*.

723 Polack, F.P., Thomas, S.J., Kitchin, N., Absalon, J., Gurtman, A., Lockhart, S., Perez, J.L., Perez  
724 Marc, G., Moreira, E.D., Zerbini, C., *et al.* (2020). Safety and Efficacy of the BNT162b2 mRNA  
725 Covid-19 Vaccine. *N Engl J Med* *383*, 2603-2615.

726 Rasa, S., Nora-Krukke, Z., Henning, N., Eliassen, E., Shikova, E., Harrer, T., Scheibenbogen, C.,  
727 Murovska, M., Prusty, B.K., and European Network on, M.C. (2018). Chronic viral infections in  
728 myalgic encephalomyelitis/chronic fatigue syndrome (ME/CFS). *J Transl Med* *16*, 268.

729 Rodda, L.B., Netland, J., Shehata, L., Pruner, K.B., Morawski, P.A., Thouvenel, C.D., Takehara,  
730 K.K., Eggenberger, J., Hemann, E.A., Waterman, H.R., *et al.* (2021). Functional SARS-CoV-2-  
731 Specific Immune Memory Persists after Mild COVID-19. *Cell* *184*, 169-183 e117.

732 Roederer, M., Nozzi, J.L., and Nason, M.C. (2011). SPICE: exploration and analysis of post-  
733 cytometric complex multivariate datasets. *Cytometry A* *79*, 167-174.

734 Rosen, S.F., Ham, B., Haichin, M., Walters, I.C., Tohyama, S., Sotocinal, S.G., and Mogil, J.S.  
735 (2019). Increased pain sensitivity and decreased opioid analgesia in T-cell-deficient mice and  
736 implications for sex differences. *Pain* *160*, 358-366.

737 Sahin, U., Muik, A., Derhovanessian, E., Vogler, I., Kranz, L.M., Vormehr, M., Baum, A.,  
738 Pascal, K., Quandt, J., Maurus, D., *et al.* (2020). COVID-19 vaccine BNT162b1 elicits human  
739 antibody and TH1 T cell responses. *Nature* *586*, 594-599.

740 Sant, A.J., DiPiazza, A.T., Nayak, J.L., Rattan, A., and Richards, K.A. (2018). CD4 T cells in  
741 protection from influenza virus: Viral antigen specificity and functional potential. *Immunol Rev*  
742 *284*, 91-105.

743 Sekine, T., Perez-Potti, A., Rivera-Ballesteros, O., Stralin, K., Gorin, J.B., Olsson, A.,  
744 Llewellyn-Lacey, S., Kamal, H., Bogdanovic, G., Muschiol, S., *et al.* (2020). Robust T Cell  
745 Immunity in Convalescent Individuals with Asymptomatic or Mild COVID-19. *Cell* *183*, 158-  
746 168 e114.

747 Shin, H., Blackburn, S.D., Blattman, J.N., and Wherry, E.J. (2007). Viral antigen and extensive  
748 division maintain virus-specific CD8 T cells during chronic infection. *J Exp Med* *204*, 941-949.

749 Sledzinska, A., Vila de Mucha, M., Bergerhoff, K., Hotblack, A., Demane, D.F., Ghorani, E.,  
750 Akarca, A.U., Marzolini, M.A.V., Solomon, I., Vargas, F.A., *et al.* (2020). Regulatory T Cells  
751 Restrain Interleukin-2- and Blimp-1-Dependent Acquisition of Cytotoxic Function by CD4(+) T  
752 Cells. *Immunity* *52*, 151-166 e156.

753 Song, E., Zhang, C., Israelow, B., Lu-Culligan, A., Prado, A.V., Skriabine, S., Lu, P., Weizman,  
754 O.E., Liu, F., Dai, Y., *et al.* (2021). Neuroinvasion of SARS-CoV-2 in human and mouse brain. *J*  
755 *Exp Med* *218*.

756 Sorge, R.E., Mapplebeck, J.C., Rosen, S., Beggs, S., Taves, S., Alexander, J.K., Martin, L.J.,  
757 Austin, J.S., Sotocinal, S.G., Chen, D., *et al.* (2015). Different immune cells mediate mechanical  
758 pain hypersensitivity in male and female mice. *Nat Neurosci* *18*, 1081-1083.

759 Syed, A., Khan, A., Gosai, F., Asif, A., and Dhillon, S. (2020). Gastrointestinal pathophysiology  
760 of SARS-CoV2 - a literature review. *J Community Hosp Intern Med Perspect* *10*, 523-528.

761 Tang, E., Ekundayo, O., Peipert, J.D., Edwards, N., Bansal, A., Richardson, C., Bartlett, S.J.,  
762 Howell, D., Li, M., Cella, D., *et al.* (2019). Validation of the Patient-Reported Outcomes  
763 Measurement Information System (PROMIS)-57 and -29 item short forms among kidney  
764 transplant recipients. *Qual Life Res* *28*, 815-827.

765 Tebo, A.E., Fuller, M.J., Gaddis, D.E., Kojima, K., Rehani, K., and Zajac, A.J. (2005). Rapid  
766 recruitment of virus-specific CD8 T cells restructures immunodominance during protective  
767 secondary responses. *J Virol* *79*, 12703-12713.

768 Tian, Y., Babor, M., Lane, J., Schulten, V., Patil, V.S., Seumois, G., Rosales, S.L., Fu, Z.,  
769 Picarda, G., Burel, J., *et al.* (2017). Unique phenotypes and clonal expansions of human CD4  
770 effector memory T cells re-expressing CD45RA. *Nat Commun* *8*, 1473.

771 Tian, Y., Babor, M., Lane, J., Seumois, G., Liang, S., Goonawardhana, N.D.S., De Silva, A.D.,  
772 Phillips, E.J., Mallal, S.A., da Silva Antunes, R., *et al.* (2019). Dengue-specific CD8+ T cell  
773 subsets display specialized transcriptomic and TCR profiles. *J Clin Invest* *129*, 1727-1741.

774 Tian, Y., Rong, L., Nian, W., and He, Y. (2020). Review article: gastrointestinal features in  
775 COVID-19 and the possibility of faecal transmission. *Aliment Pharmacol Ther* *51*, 843-851.

776 Toapanta, F.R., Bernal, P.J., Kotloff, K.L., Levine, M.M., and Sztein, M.B. (2018). T cell  
777 mediated immunity induced by the live-attenuated *Shigella flexneri* 2a vaccine candidate CVD  
778 1208S in humans. *J Transl Med* *16*, 61.

779 van Doorn, A.S., Meijer, B., Frampton, C.M.A., Barclay, M.L., and de Boer, N.K.H. (2020).  
780 Systematic review with meta-analysis: SARS-CoV-2 stool testing and the potential for faecal-  
781 oral transmission. *Aliment Pharmacol Ther* *52*, 1276-1288.

782 Van Elslande, J., Oyaert, M., Ailliet, S., Van Ranst, M., Lorent, N., Vande Weygaerde, Y.,  
783 Andre, E., Lagrou, K., Vandendriessche, S., and Vermeersch, P. (2021). Longitudinal follow-up  
784 of IgG anti-nucleocapsid antibodies in SARS-CoV-2 infected patients up to eight months after  
785 infection. *J Clin Virol* 136, 104765.

786 Vehar, S., Boushra, M., Ntiamoah, P., and Biehl, M. (2021). Post-acute sequelae of SARS-CoV-  
787 2 infection: Caring for the 'long-haulers'. *Cleve Clin J Med* 88, 267-272.

788 Wang, T., Ji, Y.L., Yang, Y.Y., Xiong, X.Y., Wang, I.M., Sandford, A.J., Liang, Z.A., and He,  
789 J.Q. (2015). Transcriptomic profiling of peripheral blood CD4(+) T-cells in asthmatics with and  
790 without depression. *Gene* 565, 282-287.

791 Weintraub, S., Dikmen, S.S., Heaton, R.K., Tulsky, D.S., Zelazo, P.D., Bauer, P.J., Carlozzi,  
792 N.E., Slotkin, J., Blitz, D., Wallner-Allen, K., *et al.* (2013). Cognition assessment using the NIH  
793 Toolbox. *Neurology* 80, S54-64.

794 Weiskopf, D., Schmitz, K.S., Raadsen, M.P., Grifoni, A., Okba, N.M.A., Endeman, H., van den  
795 Akker, J.P.C., Molenkamp, R., Koopmans, M.P.G., van Gorp, E.C.M., *et al.* (2020). Phenotype  
796 and kinetics of SARS-CoV-2-specific T cells in COVID-19 patients with acute respiratory  
797 distress syndrome. *Sci Immunol* 5.

798 Wherry, E.J. (2011). T cell exhaustion. *Nat Immunol* 12, 492-499.

799 Wherry, E.J., Barber, D.L., Kaech, S.M., Blattman, J.N., and Ahmed, R. (2004). Antigen-  
800 independent memory CD8 T cells do not develop during chronic viral infection. *Proc Natl Acad*  
801 *Sci U S A* 101, 16004-16009.

802

803 **Figure Legends**

804 **Figure 1: Study design and clinical data**

805 A.) Flow chart describing patient populations and experimental assays for each sample. B.) Table  
806 showing patient demographics and neurologic symptoms. C.) PROMIS-57 patient reported  
807 survey T scores for CN (n=36) and CC (n=13) groups. D.) NIH Toolbox cognitive T scores for  
808 CN (n=43). Horizontal black line represents the U.S. national average T score of 50; p values  
809 relative to US national average by one sample Wilcoxon signed rank test. \*p<0.05, \*\*\*p<0.005,  
810 \*\*\*\*p<0.0001 by two-tailed Student's t test.

811 **Figure 2: Neuro-PASC long-haulers display altered reactivity to SARS-CoV-2 N and M**  
812 **peptides compared to healthy convalescents.**

813 A-B.) CN (PCR+ or seropositive neuro-PASC) and CC (PCR+ or seropositive healthy COVID  
814 convalescent) groups display similar IFN- $\gamma$  and IL-2 responses to peptides from SARS-CoV-2  
815 Spike protein by ELISPOT. C-D.) CN samples show significantly enhanced IFN- $\gamma$  responses to  
816 the N3 peptide pool (C) and to the M1 and M3 peptide pools (D) compared with CC or healthy  
817 controls. E-F.) N- and M- specific IL-2 production did not significantly differ between patient  
818 subgroups. G.) Spike RBD IgG endpoint titer quantification for CN, CC, and HC groups. LOD is  
819 limit of detection. Data representative of 10 experiments with all conditions plated in duplicate.  
820 \*p<0.05, \*\*p<0.01, \*\*\*p<0.005, \*\*\*\*p<0.0001 by two-way ANOVA with Tukey's posttest.

821 **Figure 3: N-specific CD4<sup>+</sup> Tfh cells are more activated and S-specific CD4<sup>+</sup> T cells display**  
822 **enhanced polyfunctional granzyme production in neuro-PASC long-haulers.**

823 A.) FACS plots show that Ag-specific CD4 Tfh from CN patients are more highly activated in  
824 response to N peptide pool stimulation compared with CC or HC, but less activated by M  
825 peptides. B.) Quantification of AIM<sup>+</sup> Tfh cell activation. C-D.) N- and M-specific AIM<sup>+</sup> Tfh cell



826 percentages plotted by time sample obtained post-infection for CN and CC. No correlation was  
827 found between these parameters. E.) Anti-SARS-CoV-2 nucleocapsid IgG endpoint titers for  
828 CN, CC, and HC subjects shown in 3D. CN patients display significantly elevated anti-N IgG  
829 titers compared with CC subjects. F.) Pie graphs show CD4<sup>+</sup> T cells from CC patients have  
830 enhanced production of granzymes A, B, & M compared with CN or HC subjects in response to  
831 SARS-CoV-2 Spike protein. G.) Heatmap quantifying polyfunctionality in different categories of  
832 cytokine production between groups. CC subjects produced 2-fold more granzymes A/B/M than  
833 CN patients. Data combined from 6 independent experiments with CN n=35, CC n=11, and HC  
834 n=9. \*p<0.05 using one-way ANOVA with Bonferroni's posttest (B) or a Permutation test (E).  
835 All pie graphs are showing data after subtracting background (unstimulated condition).

836 **Figure 4: Neuro-PASC long-haulers have decreased CD8<sup>+</sup> memory T cell activation and**  
837 **function compared with healthy convalescents.**

838 A.) Selected FACS plots showing CD8 TEM cells are less activated in CN vs. CC groups after S  
839 and N peptide pool stimulation. B.) Quantification of AIM<sup>+</sup> CD8 TEM cells after SARS-CoV-2  
840 peptide stimulation. C.) CD8<sup>+</sup> TEMRA cells accumulate significantly in PBMC from CN  
841 subjects compared with CC or HC. D.) CD8<sup>+</sup> TEMRA cells from CN patients are less activated  
842 by S3/4 and N pools compared with those from CC subjects. E.) Quantification of AIM<sup>+</sup> CD8<sup>+</sup>  
843 TEMRA cells from D. F.) Pie charts demonstrating that S3/4-specific CD8<sup>+</sup> TEM are polarized  
844 to produce more TNF- $\alpha$  in CC group while those from CN patients produce significantly more  
845 IL-6. G.) CD8<sup>+</sup> TEMRA from CC patients are polarized towards category 2 cytokine production  
846 in response to S3/4 stimulation compared with CN subjects. Black lines demonstrate boundaries  
847 of category 2 cytokine production in each group. Data combined from 5 independent  
848 experiments with n=35 CN, n=11 CC. \*p<0.05, \*\*p<0.01 using two-tailed Student's t test with

849 Welch's correction (B, C, E) or permutation test (F, G). All pie graphs are showing data after  
850 subtracting background (unstimulated condition).

851 **Figure 5: Clinical measures of cognitive dysfunction and depression correlate with altered**  
852 **CD8<sup>+</sup> memory T cell function in neuro-PASC long-haulers.**

853 A.) Higher T cell responses to N pool stimulation are positively correlated with high pain scores  
854 in CN patients. B.) A positive trend exists between elevated N-specific IFN- $\gamma$  production and  
855 higher depression scores in CN patients. C.) CN patients scoring high on pain interference have  
856 Spike-specific CD8<sup>+</sup> T cells producing more IL-6 than those scoring low. D.) Heatmap showing  
857 CN with low pain scores have Spike-specific CD8<sup>+</sup> T cells producing significantly more  
858 granzymes A or B than those reporting high pain levels. E.) Pie graph to demonstrate that CN  
859 patients in Q4 for depression have significantly enhanced production of granzymes A/B/M  
860 compared with patients with low depression scores. F.) Heatmap demonstrating that CN patients  
861 with high depression scores had Spike-specific CD8<sup>+</sup> TEM producing 3-fold higher levels of  
862 granzymes A, B, and M or perforin than those scoring low on depression. G.) Spike-specific  
863 CD8<sup>+</sup> TCM from CN patients with high scores for executive function are more polarized to  
864 produce granzymes A/B/M compared with CN patients from Q1. H.) Heatmap showing Spike-  
865 specific CD8<sup>+</sup> TCM in Q1 CN patients are more polyfunctional and produce 8-10x more  
866 granzymes A/B/M and perforin than those in Q4. Data representative of 5 independent  
867 experiments with n=8-9/quartile. All pie graphs showing Ag-specific cytokine production are  
868 background subtracted (unstimulated conditions). \*p<0.05, \*\*p<0.01, \*\*\*\*p<0.001 using  
869 Permutation tests.

870

871 **Figure 6: Spike-specific T cell responses wane within 4 months after vaccination in CC and**  
872 **HC subjects while remaining high in CN patients over time.**

873 A.) Vaccine study visit timeline. V0 was obtained before the first dose of either Pfizer or  
874 Moderna mRNA vaccines. V1 and V2 were conducted 3 weeks after the first and second doses,  
875 respectively. B.) Vaccine study subject demographics. C.) Longitudinal anti-Spike RBD IgG  
876 responses from V0-V4 across groups. Antibody titers are highest in CN patients and wane most  
877 quickly in HC subjects. D.) IFN- $\gamma$  production from Spike-specific T cells do not significantly  
878 increase in CC and HC groups while remaining high in CN up to V4 post-vaccination. Total S-  
879 specific IFN- $\gamma$  SFU calculated by averaging responses from each sub-pool for each participant  
880 (data in Fig. S9). Data combined from 10 individual experiments with all ELISA conditions done  
881 in triplicate and all ELISPOT conditions plated in duplicate. \* $p < 0.05$ , \*\* $p < 0.01$ , \*\*\* $p < 0.005$ ,  
882 \*\*\*\* $p < 0.0001$  by two-way ANOVA with Tukey's posttest or by two-tailed Student's t test.

883

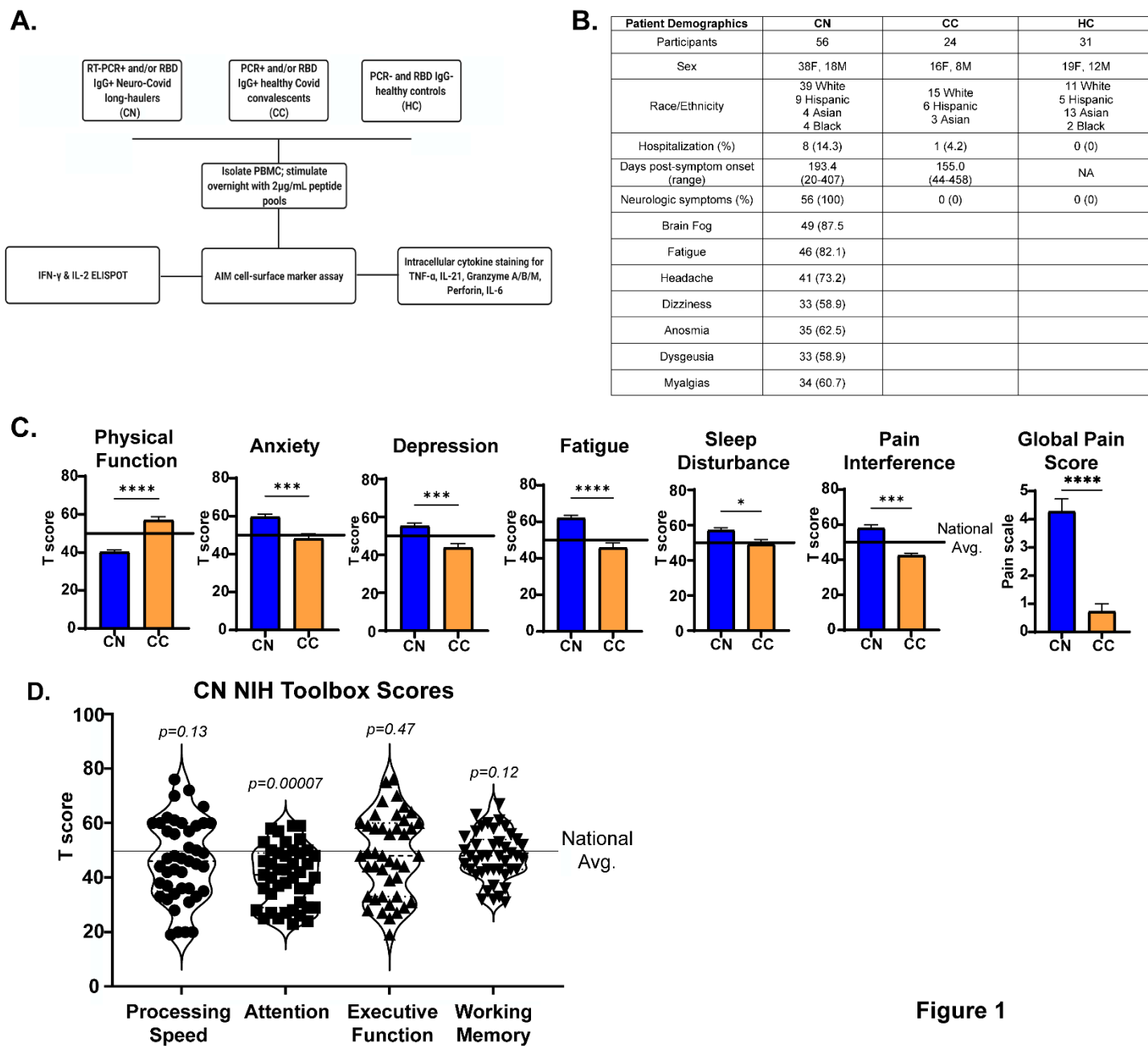


Figure 1

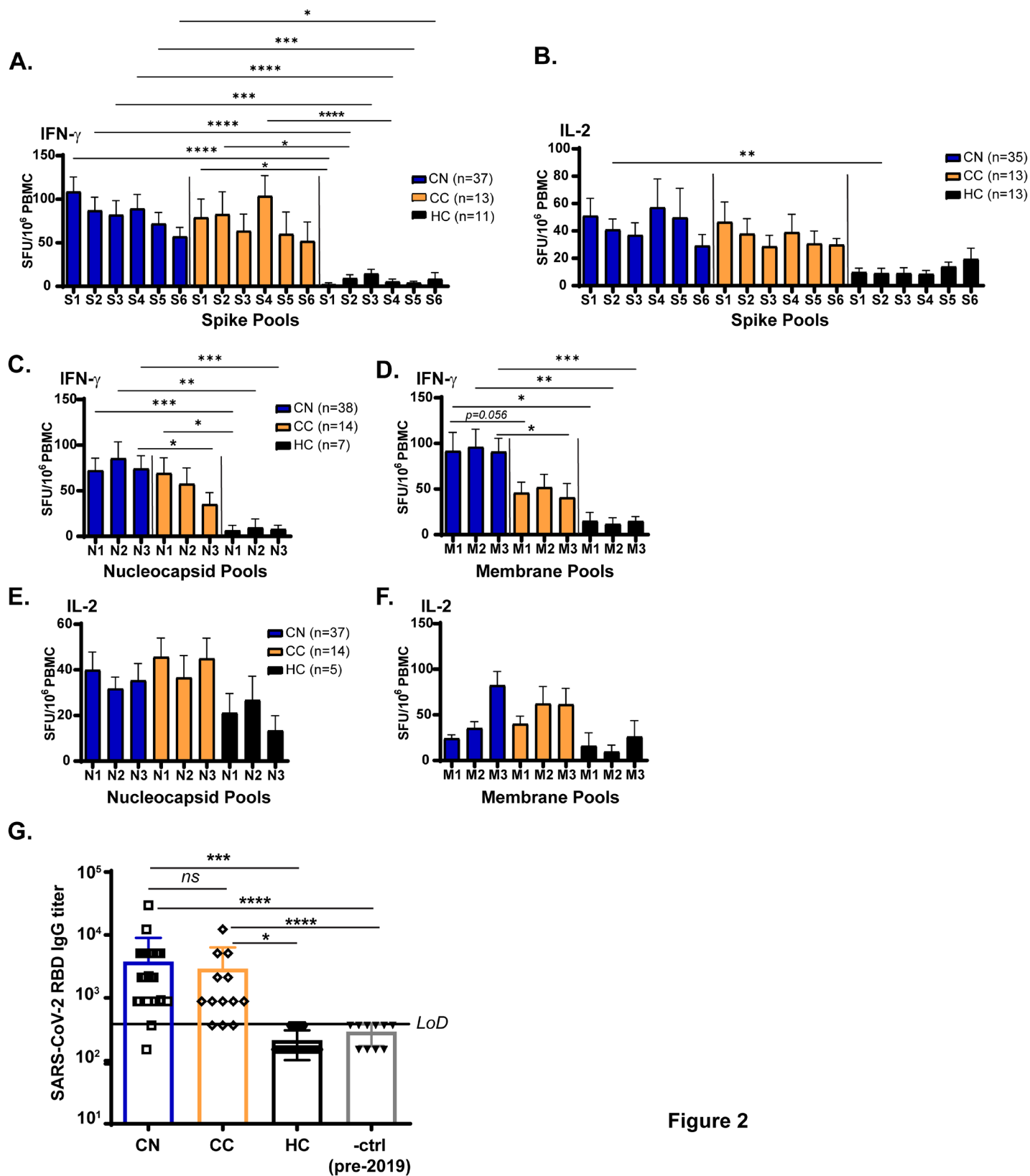
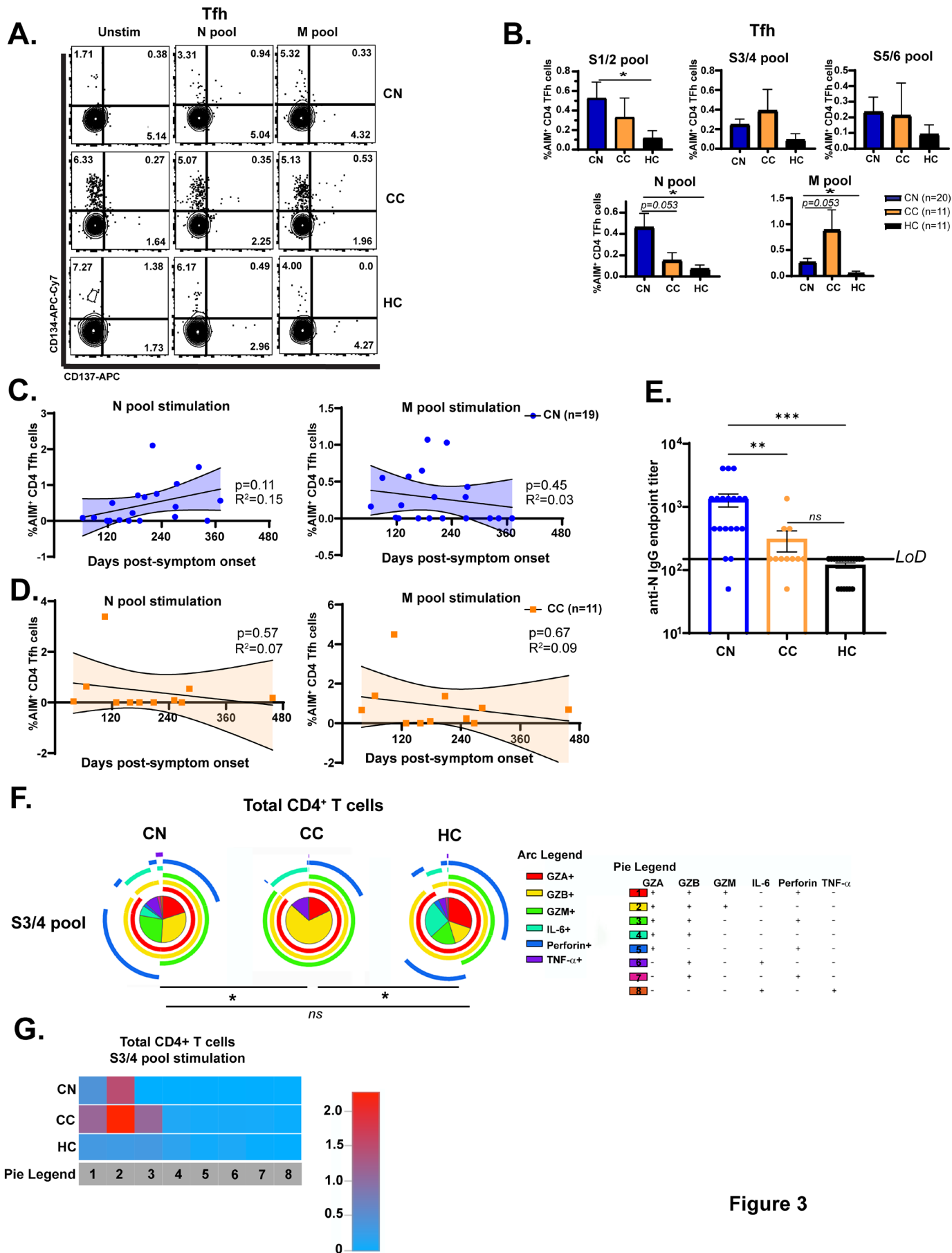


Figure 2



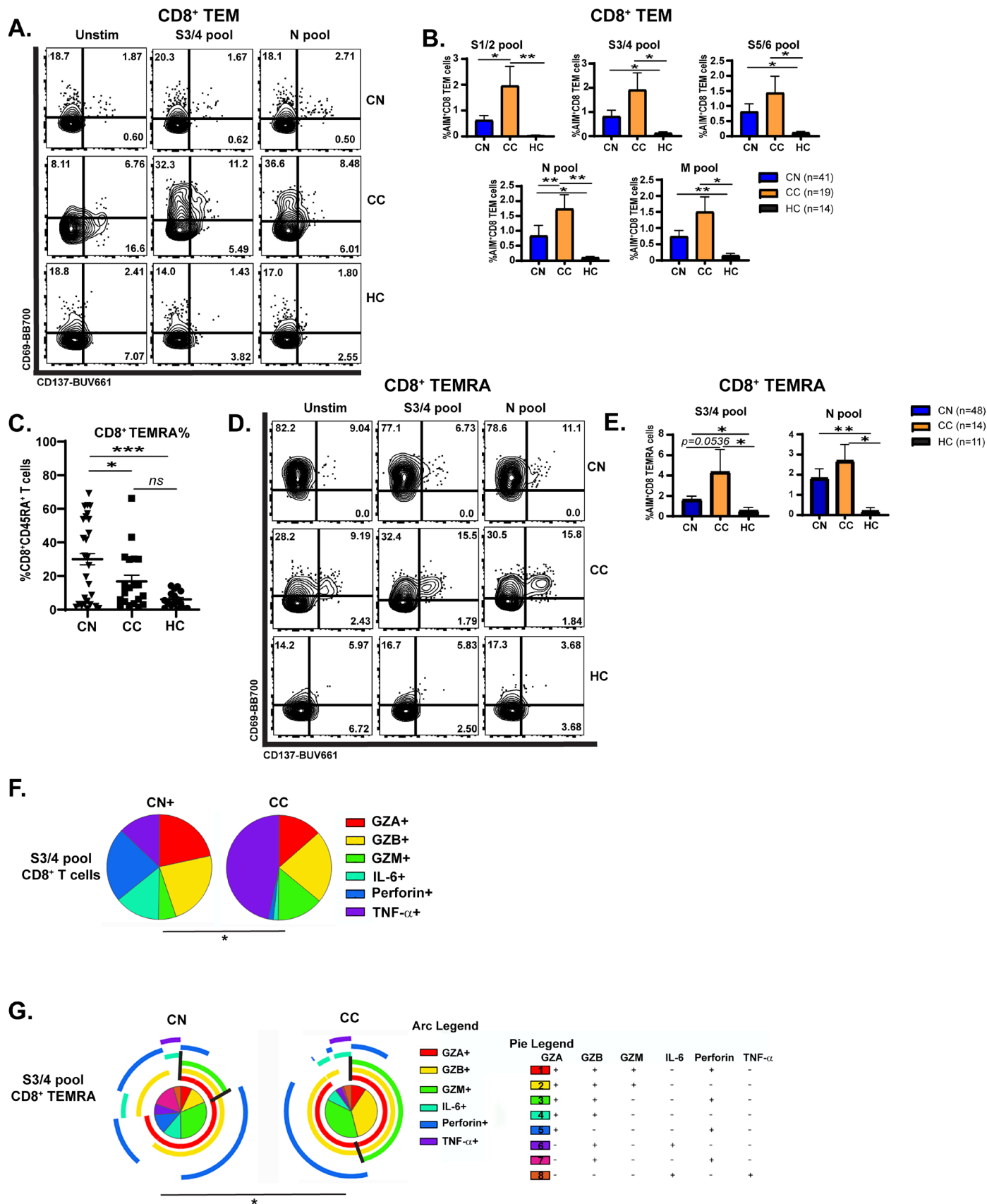


Figure 4

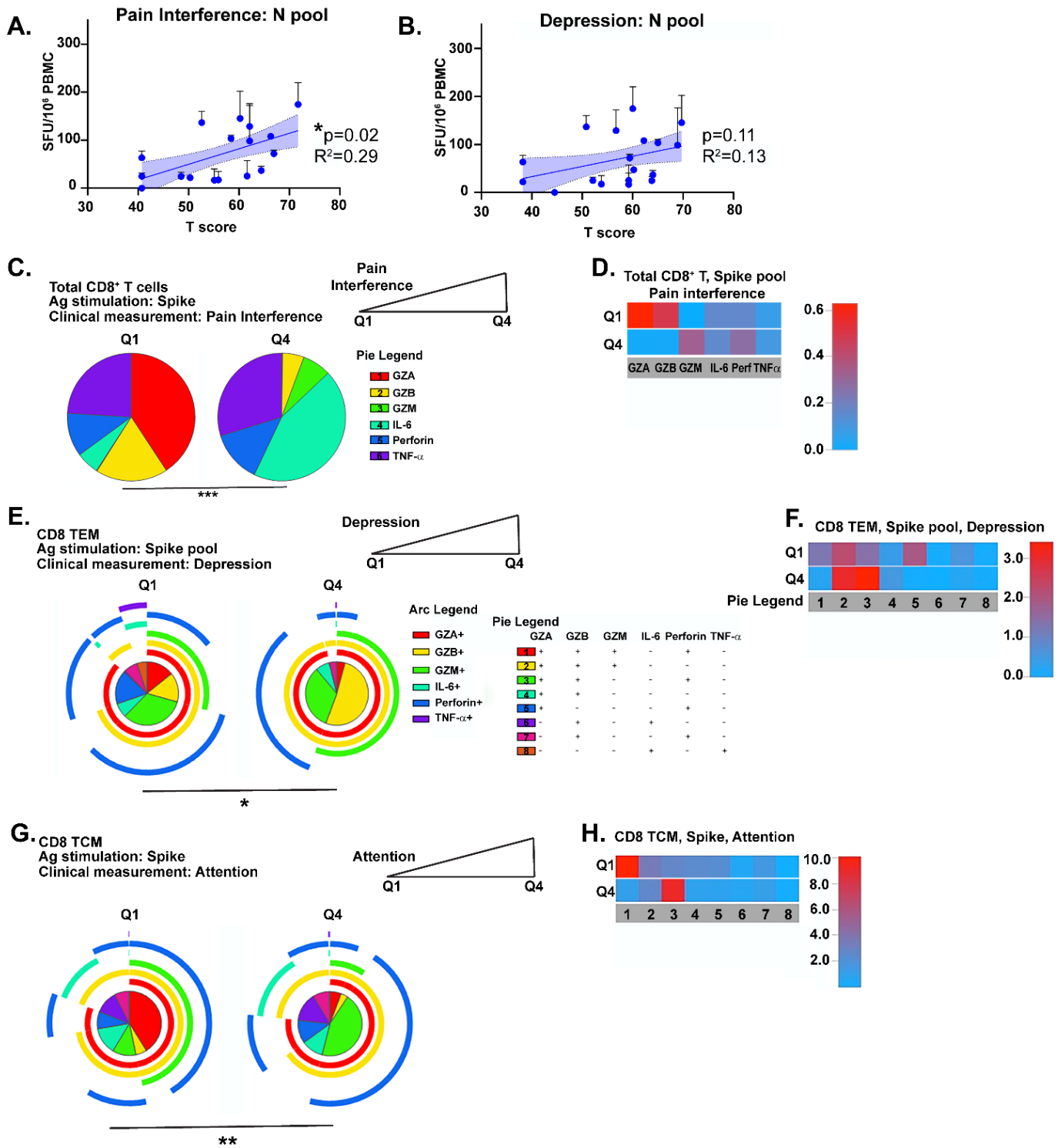
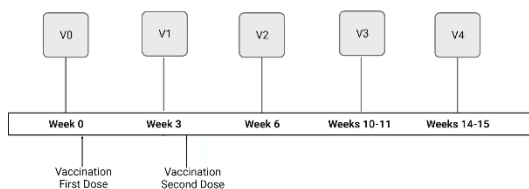


Figure 5



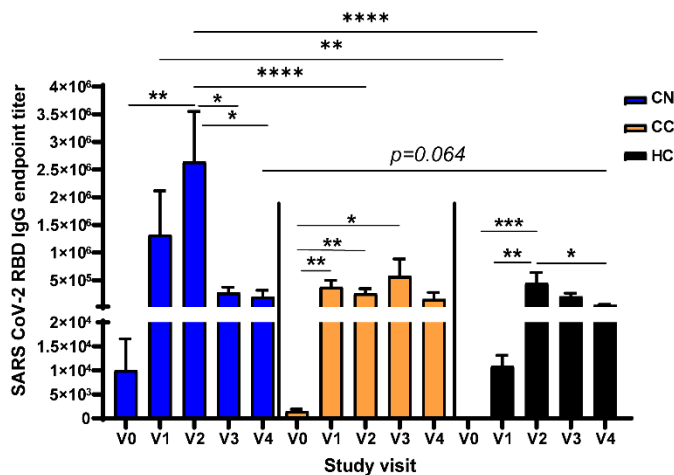
A.



B.

Vaccine Study Demographics	CN	CC	HC
Participants	19	12	20
Mean Age (range)	50.8 (33-70)	29.2 (22-63)	29.9 (22-59)
Sex	13F, 6M	7F, 5M	13F, 7M
Race/Ethnicity	12 White 5 Hispanic 1 Asian 1 Black	8 White 1 Hispanic 3 Asian	8 White 4 Hispanic 7 Asian 1 Black
Vaccine Brand	13 Pfizer 6 Moderna	10 Pfizer 2 Moderna	16 Pfizer 4 Moderna

C.



D.

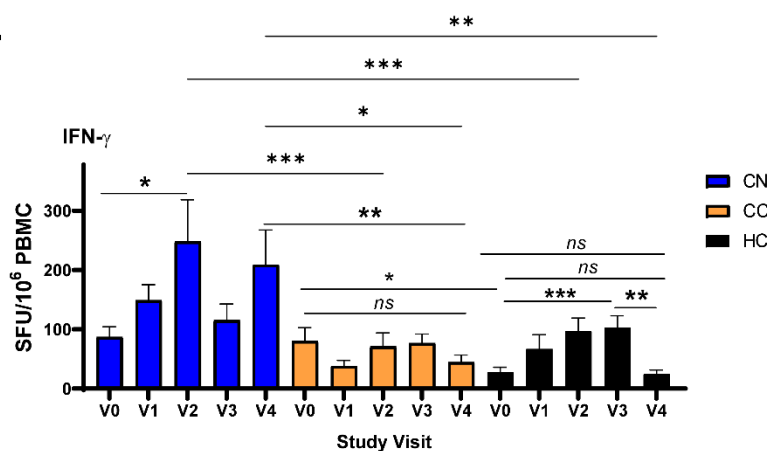


Figure 6