

1 *Surveillance genome sequencing reveal multiple SARS-CoV-2 variants circulating in the*
2 *central Texas, USA with a predominance of Delta variant and review of vaccine breakthrough*
3 *cases.*

4 **Manohar B. Mutnal**¹, Shelby Johnson¹ Nada Mohamed¹, Rasha Abdelgader¹, Linden
5 Morales¹, Marcus Volz¹, Kimberly Walker¹, Alejandro C. Arroliga², Arundhati Rao¹

6

7 Author affiliation:

- 8 1. Department of Pathology and Laboratory Medicine, Baylor Scott & White Medical
9 Center, 2401 South 31st Street, Temple, TX 76508
10 2. Department of Pulmonary Medicine and Critical Care and Chief Medical Officer, Baylor
11 Scott & White Medical Center, 2401 South 31st Street, Temple, TX 76508

12

13 *Address for correspondence*

14 *Manohar B. Mutnal, Ph.D.*

15 *Section Chief – Microbiology*

16 *Department of Pathology and Laboratory Medicine*

17 *2401, South 31st street, Temple TX 76508*

18 Manohar.Mutnal@bswhealth.org

19 *Phone: 254-724-2714*

20 *Short title: SARS-CoV-2 variants and vaccine breakthrough cases in Central Texas, USA*

21

22 **Abstract**

23 As surges in the COVID-19 pandemic have continued worldwide, SARS-CoV-2 has mutated,
24 spawning several new variants, and impacting, to various degrees, transmission, disease severity,
25 diagnostics, therapeutics, and natural and vaccine-induced immunity. Baylor Scott & White
26 Health has implemented, along with laboratory diagnosis, SARS-CoV-2 sequencing to identify
27 variants in its geographical service area. We analyzed virus sequencing results of specimens
28 collected across Central Texas and found dramatic changes in variant distribution in the first half
29 of 2021. The alpha variant (B.1.1.7) became predominant at week 13 and continued dominance
30 until week 25. A growth rate of 1.20 ($R^2 = 0.92$) for the first 15 weeks was noted and this growth
31 gradually declined to -0.55 ($R^2 = 0.99$) for the final 13 weeks. Currently, B.1.1.7 is being
32 displaced with B.1.617.2 at 0.58 growth rate ($R^2 = 0.97$). We also investigated vaccine
33 breakthrough cases within our healthcare system and present clinical data on 28 symptomatic
34 patients.

35

36 **Introduction:**

37 As of July 2021, severe acute respiratory syndrome coronavirus 2 (SARS-CoV-2) has resulted in
38 over 4.1 million deaths worldwide, more than 600,000 in the United States of America, and more
39 than 51,000 in the state of Texas alone.(1) As the pandemic continues to surge in countries that
40 have not yet received meaningful supplies of vaccines and in communities that remain resistant
41 to vaccination, genetic variants are emerging that have different characteristics in terms of
42 transmissibility, the severity of disease they cause, and, potentially, their susceptibility to the
43 treatments and vaccines developed based on the wild-type virus.(2) Of particular concern are
44 emerging variants that include mutations in the S gene, coding for the viral spike protein, which
45 has been the primary target of the most effective vaccines and passive antibody treatments
46 authorized and deployed against COVID-19.(3) Variants with mutations in the S gene are
47 potential threats to their continued efficacy.(4, 5) These concerns have provided an impetus to
48 increase testing and sequencing of viral DNA in infected persons in order to understand the
49 transmissibility, virulence, and ability of variants to evade current vaccines (6).

50 RNA viruses exist as a swarm or “quasispecies” of genome sequences around a core consensus
51 sequence (7). Under conditions of selection, such as those imposed by neutralizing antibodies or
52 drugs, variants of the swarm can escape genetically and become resistant. To date, 4150
53 mutations have been identified in the S gene of SARS-CoV-2 isolated from humans ([CoV-](#)
54 [GLUE, 2021](#); [GISAID, 2021](#)). These mutations give rise to 1,246 amino acid changes including
55 187 substitutions in the receptor binding domain (RBD) (8). The abundance of many variants in
56 the human population suggests they are not accompanied by a fitness loss. Multiple mechanisms
57 likely account for the emergence of such substitutions including host adaptation, immune

58 selection during natural infection, and possibly reinfection of individuals with incomplete or
59 waning immunity.

60 Most clinical laboratories performing diagnostic testing for SARS-CoV-2 are not equipped to
61 detect genetic variants unless additional resources are made available for genomic sequencing of
62 suspected cases and false negatives caused by mutations in the targeted genes. The lack of
63 funding for technology, clinical utility and regulatory oversight may have contributed to non-
64 availability of sequencing methods in the clinical laboratories. Epidemiological investigations
65 are not part of the diagnostic laboratory routine workflow; however, the widespread nature of
66 SARS-CoV-2 pandemic necessitates clinical laboratories be prepared – through funding,
67 technology acquisition, appropriate staffing, and technical competency - to perform genetic
68 sequencing to aid in the control measures.

69 To assist public health officials involved in tracking and tracing the SARS-CoV-2 variants in the
70 Central Texas community, the Baylor Scott & White Health (BSWH) molecular microbiology
71 laboratory participated in genotyping of previously confirmed SARS-CoV-2 specimens. The
72 reports generated were not released to patients' electronic health records but were provided to
73 public health officials for necessary interventions when a variant of concern (VOC) or variant of
74 interest (VOI) was identified. Similarly, vaccine breakthrough cases were identified and reported
75 according to Centers for Disease Control and Prevention (CDC) definitions.(9)

76 In this report, we present evolution of SARS-CoV-2 lineages in the Central Texas area, and their
77 association with vaccine breakthrough cases, along with clinical history of those breakthrough
78 cases. In large, randomized-controlled trials, each vaccine was found to be safe and efficacious
79 in preventing symptomatic, laboratory-confirmed COVID-19 (10) (11). In this report, we present
80 evolution of SARS-CoV-2 lineages in the limited geography of Central Texas and their

81 association with vaccine breakthrough along with clinical history of vaccinated patients exposed
82 to variants.

83

84 **Material and Methods:**

85 This study was reviewed and approved by the Baylor Scott and White Research Institute
86 Institutional Review board (IRB # 021-144) with a waiver of the requirement of informed
87 consent for the use of residual specimens for sequencing and epidemiological studies.

88 *Specimen Selection for sequencing*

89 Since the beginning of the pandemic our laboratory has archived all the positive specimens
90 confirmed by one of the nucleic acid amplification methods that were deployed for diagnosis of
91 SARS-CoV-2 infections. Since the implementation of sequencing, both retrospective and
92 prospective specimens were selected for variant identification in our community. BSWH
93 molecular pathology laboratory has conducted approximately 400,000 tests and SARS-CoV-2
94 and reported 10.8% overall positivity rate for the Central Texas geography. These tests include
95 both symptomatic and surveillance specimens since the beginning of the pandemic, March 2020.
96 While surveillance testing resulted in 1.8% and symptomatic 15.8% positivity rates (Data
97 accessed on 27th, May 2021). Genome sequencing was introduced to detect SARS-CoV-2
98 variants from the beginning of the year, 2021.

99 Specimens (nasopharyngeal swabs) positive for SARS-CoV-2 by emergency use authorization
100 (EUA)-cleared nucleic acid amplification methods, performed at Department of Pathology
101 & Laboratory Medicine, Baylor Scott & White Hospital, Temple, TX from 1/1/2021 to
102 07/07/2021, were identified for sequencing. Specimens for sequencing were selected based on Ct

103 <30 on a polymerase chain reaction (PCR) method, or RLU >1000 on a transcription mediated
104 amplification (TMA) method. We randomly selected 1% of the positive specimens for
105 sequencing when positivity rates were higher than 5% and all positive specimens when positivity
106 rates were <5%, to identify the variants in circulation.

107 ***Vaccine breakthrough cases***

108 An electronic query was set up in the electronic health record to identify patients with a COVID-
109 19 vaccination history. If patients were tested multiple times post vaccination they were
110 distinctly counted, and the first positive was counted for statistical purposes.

111 ***Library Preparation and Sequence Data Analysis***

112 Nucleic acid was purified from each specimen and subjected to reverse transcription, next-
113 generation sequencing library preparation, sequencing, and data analysis according to the
114 manufacturer's recommendation using two different platforms;

115 ***Sequencing on Ion Torrent (ThermoFisher) S5 system***

116 Extracted RNA was subject to reverse transcription using the SuperScript VILO cDNA
117 Synthesis Kit Chef (ThermoFisher Scientific, Waltham, MA). Library preparation and
118 subsequent templates were performed using the Ampliseq SARS-CoV-2 Research Panel, DL8
119 kit, and the Ion 510 & Ion 520 & Ion 530 Kit on the Ion Chef. Sequencing was performed on the
120 Ion Torrent S5. Data were manually uploaded to the NextClade bioinformatics pipeline for
121 analysis.

122 ***Sequencing on Illumina COVIDSeq System***

123 Extracted RNA was subject to reverse transcription and library preparation using the
124 Illumina COVIDSeq Test protocol and reagents (Illumina, Inc, San Diego, CA). Libraries were
125 pooled per manufacturer instruction and sequenced on the Illumina NextSeq. Data was analyzed
126 using the Illumina BaseSpace application/bioinformatics pipeline, DRAGEN COVID Lineage
127 v3.5.1.

128 *Data collection*

129 Epidemiological, demographic, clinical and laboratory data were extracted from electronic health
130 records and the laboratory information system.

131 *Statistical Analysis*

132 Descriptive analysis was performed to present demographics factors (age, gender, and ethnicity),
133 clinical presentation, clinical outcome, and molecular studies on SARS-CoV-2 specimens.
134 Growth rate statistical analyses were performed in SAS 9.4. All graphs were created in R version
135 3.5.1. To calculate growth curves, the Verhulst growth model, also known as the logistic growth
136 model, was used to model population growth with constraints. The formula for the Verhulst
137 growth model is:

$$138 \quad Y(t) = \frac{K}{1 + e^{-r(t-b)}}$$

139
140 Where: $Y(t)$ = The population size at a given time, K = The upper limit of the population size
141 (in our case, 1), r = the rate of maximum growth, b = the time at which the quantity is half its
142 maximum value, t = time

143

144 **Results:**

145 *Evolution of Central Texas variants and rapid displacement of B.1.1.7 with B.1.617.2.*

146 Since the beginning of the pandemic our laboratory has archived all the positive specimens
147 confirmed by one of the nucleic acid amplification methods that were deployed for diagnosis of
148 SARS-CoV-2 infections. Since the implementation of sequencing, both retrospective and
149 prospective specimens were selected for variant identification in our community. BSWH
150 molecular Microbiology laboratory has conducted approximately 400,000 tests and SARS-CoV-
151 2 and reported 10.8% overall positivity rate for the Central Texas geography. These tests include
152 both symptomatic and surveillance specimens since the beginning of the pandemic, March 2020.
153 While surveillance testing resulted in 1.8% and symptomatic 15.8% positivity rates (Data
154 accessed on 27th, May 2021). Genome sequencing was introduced to detect SARS-CoV-2
155 variants from the beginning of the year, 2021. We randomly selected 1% of the positive
156 specimens for sequencing during initial weeks when positivity rates was higher than 5% and
157 once the overall positivity rate was below 5% all positive specimens were in the pipeline for
158 sequencing to identify the variants in circulation.

159 Figure 1 shows the distribution of variants in circulation by week of collection during the study
160 period. Data presented in the Figure 1 do not reflect every sample sequenced as there is a process
161 lag.

162 The alpha variant (B 1.1.7) became predominant variant at week 13 and continued dominance
163 until week 25 (Figure 2A). A growth rate of 1.20 ($R^2 = 0.92$) for the first 15 weeks was noted
164 and this growth gradually declined to -0.55 ($R^2 = 0.99$) for the final 13 weeks. Currently, B.1.1.7
165 is being displaced with the delta variant (B.1.617.2) at 0.58 growth rate ($R^2 = 0.97$) (Figure 2B)

166

167 ***Vaccine breakthrough studies.***

168 BSWH tested 96,357 patients for SARS-CoV2 by nucleic acid amplification testing (NAAT)
169 between 01/01/2021 and 05/31/2021. Patients tested multiple times were distinctly counted
170 once. In the event a patient was tested multiple times with both detected and not detected results,
171 only the first detected result was counted for capturing the vaccine breakthrough on the earliest
172 day of detection.

173 Among the 96,357 patients, 3925 (4%) were fully vaccinated with the BNT162b2, mRNA-1273,
174 or Janssen COVID-19 Vaccine, and were at least 14 days post the final dose. An additional 3164
175 (3.2%) patients were partially vaccinated either with BNT162b2 or mRNA-1273. Patients were
176 considered partially vaccinated if their second dose (or the single dose for Janssen COVID-19)
177 was <14 days before the specimen collection being investigated.

178 According to the established criteria ([https://www.cdc.gov/vaccines/covid-19/health-](https://www.cdc.gov/vaccines/covid-19/health-departments/breakthrough-cases.html)
179 [departments/breakthrough-cases.html](https://www.cdc.gov/vaccines/covid-19/health-departments/breakthrough-cases.html)), we detected 72 (1.8%) vaccine breakthrough cases out of
180 3925 fully vaccinated individuals. Of these 72 cases, 33 (45.8%) specimens had <30 Ct value or
181 >1000 RLU on the TMA method and so were suitable for sequencing. In the partially vaccinated
182 patients, 207 vaccine breakthrough cases were detected for a 6.54% positivity rate, while among
183 the 90,898 unvaccinated individuals, 10,503 (11.5%) were positive for SARS-CoV-2 infection.

184 Data presented in Figure 3 show the weekly distribution of vaccine breakthrough cases and the
185 variants involved. The vaccine breakthrough investigation was begun at week 10. The alpha
186 variant (B.1.1.7) caused 16 (22.2%) out of 72 vaccine breakthrough cases, while the delta variant

187 (B.1.617.2) contributed 11 (15.2%) vaccine breakthrough cases, all during the final 4 weeks of
188 the study period (week 24-27), as this variant gained more prevalence.

189 *Clinical presentation of vaccine breakthrough cases.*

190 We performed a review of electronic health records of patients who were fully vaccinated and
191 experienced vaccine breakthrough (Table 1). Among the 33 vaccine breakthrough cases that
192 were sequenced, 28 were included in the VBT study as their clinical data existed in our EHR. Of
193 the 28 VBT cases reviewed, 17 (60%) were females, and the mean age of these 28 patients was
194 54.9 (20 – 88 years).

195 Most of the vaccine breakthrough patients (96%) had comorbid conditions, hypertension being
196 the most common (39.3%). Other common comorbid conditions were determined and diabetes
197 mellitus (28.6%), asthma (17.9%), and chronic obstructive pulmonary disease (7.1%) .

198 Approximately 45% of the patients reported being either active (10%) or former smokers (35%).

199 Table 1 shows the symptoms associated with breakthrough under each vaccine brand in our
200 sample. However, direct comparisons between brands cannot be made with our data, given both
201 the small numbers and the complexities related to the different dosing schedules and different
202 rates of use in the population, and conclusions about the relative effectiveness of the different
203 brands overall or against specific variants should not be inferred from these results. Two (2.1%)
204 vaccine breakthrough cases were hospitalized with shortness of breath.

205

206

207

208 Discussion

209 In this study, we examined the SARS-CoV-2 variant distribution in the Central Texas region in
210 the first half of 2021, finding first growing dominance by the alpha (B.1.1.7) variant, with a
211 maximum growth rate of 1.20 in the first 15 weeks, followed by rapid displacement by the delta
212 (B1.617.2) variant at a 0.58 growth rate. We also identified 207 vaccine breakthrough cases
213 among the 3164 partially vaccinated individuals, and 72 among the 3925 fully vaccinated
214 individuals for whom we had testing samples, including 28 for whom the variant with which they
215 were infected was able to be determined. Similar to the overall pattern of various distribution
216 among COVID cases in this study population, the sequenced vaccine breakthrough cases showed
217 a predominance of the alpha (B.1.1.7) variant being rapidly replaced by the delta (B.1.617.2)
218 variant in the last few weeks of the study period.

219

220 Our findings regarding the distribution of circulating variants in Central Texas are similar to
221 those observed for the United States as a whole. The alpha (B.1.1.7) variant became the
222 predominant variant across the United States by April 2021, followed by rapid displacement by
223 the delta (B.1.617.2) variant, which became the dominant strain early in July 2021. (12, 13) By
224 July 3, 2021, the delta (B.1.617.2) variant accounted for an estimated 61.7% of COVID-19 cases
225 nationally ,(13) which is similar to the 64% we observed in the final week of our study period
226 (ending on 7/7/2021). Such rapid, widespread changes in variant distribution underscore the
227 critical need for robust and timely genomic surveillance (14). In this study, we showed SARS-
228 CoV-2 variant distribution in the Central Texas region and rapid displacement of current B.1.1.7
229 (Alpha) variant with B1.617.2 (Delta) variant. The distribution of circulating SARS-CoV-2
230 variants in the United States changed rapidly during the period of January 2020 – May 2021. The

231 expansion of the Alpha variant to become the predominant variant in all U.S. regions in the
232 beginning of the year 2021, and the more recent emergence of the Delta variant in all regions,
233 underscore the critical need for robust and timely genomic surveillance (14). A growth rate of
234 1.20 for the first 15 weeks was noted for Alpha variant and this growth gradually declined to -
235 0.55 for the final 13 weeks. Currently, B.1.1.7 is being displaced with B.1.617.2 at 0.58 growth
236 rate. Our data collected from Central TX reflects the national trend that Delta is rapidly
237 becoming prevalent variant (12).

238 Questions raised with each new variant spreading include whether the variant will “escape” the
239 protection conferred by either natural immunity following infection with a different strain of the
240 virus or acquired immunity from one of the authorized vaccines, all of which were developed
241 based on the version of Sars-CoV-2 originally detected in Wuhan, China. Of particular interest in
242 the United States, currently, is whether the predominance of the delta (B.1.617.2) variant will
243 cause an increased rate of vaccine breakthrough cases. In the spring of 2021, the alpha (B.1.1.7)
244 variant plateaued at relatively low level in the many U.S. regions in the context of increasing
245 vaccination while mask mandates and social distancing measures implemented by local and state
246 governments, as well as many private businesses, remained in place. Texas, which ended
247 government-ordered mask mandates and other pandemic-related restrictions in March 2021,(15)
248 has seen a rapid rise in COVID-19 cases and hospitalizations again in July 2021,(16, 17)
249 concomitant with the rising dominance of the delta (B.1.617.2) variant. Our results examining
250 the variant distribution in vaccine breakthrough cases show that both the alpha (B.1.1.7) and
251 delta (B.1.617.2) variants have caused some small number of breakthrough cases, with
252 predominance patterns appearing to mirror those of the broader cases of COVID-19. The number
253 of samples suitable for sequencing in our study is too small, and the portion of our study period

254 in which the delta (B.1.617.2) variant held dominance too short, to make any comparisons
255 regarding the risk for vaccine breakthrough these two variants carry.

256 Almost all (96%) of the fully vaccinated patients who experienced vaccine breakthrough in our
257 study had comorbid chronic conditions. Little evidence is currently available regarding risk
258 factors for vaccine breakthrough infection, but our results are consistent with such evidence as is
259 available. One study conducted using data from the Veterans Health Administration reported that
260 increasing age, multiple comorbid conditions, and non-black race were associated with
261 confirmed breakthrough infection.(18) A systematic review of studies reporting serious adverse
262 effects, SARS-CoV-2 infection and deaths after COVID-19 vaccination, identified
263 comorbidities, Variants of Concern, and casual attitude towards COVID Appropriate Behaviors
264 among the most important factors contributing to risk for vaccine breakthrough infection.(19)

265
266 We also examined the symptoms the 28 fully vaccinated patients with breakthrough infections
267 experienced. Cough was most commonly reported (46.4%), but four (14.3%) had shortness of
268 breath and 2 (7%) required hospitalization. In terms of serious illness requiring hospitalization,
269 these results are similar to those reported by the CDC from 46 U.S. states and territories as for
270 January 1 to April 30, 2021, in which 10% of patients with breakthrough infections required
271 hospitalization.(20) Likewise, similar percentages of breakthrough cases were asymptomatic in
272 our sample (28.6%) and in the national data reported by the CDC (27%).(20)

273
274 Our study design was not intended to deduce vaccine effectiveness against any particular variant,
275 but the small numbers of vaccine breakthrough infections we identified add to the growing

276 evidence that the greatest remaining risks for COVID-19 in the United States are almost entirely
277 isolated to the unvaccinated. Equally important is the substantially higher positivity rate we
278 observed in partially vaccinated individuals. It is to be hoped that continued accumulation of
279 such evidence will encourage the 40% of eligible Texans who remain entirely unvaccinated, and
280 the 9% who have not completed their vaccination schedule,(21) to take this important step in
281 protecting themselves, their families, and their communities. Continued monitoring will, of
282 course, be needed, particularly given the current overall rise in case numbers in Texas, and the
283 recent shift in dominance from the alpha (B.1.1.7) to the delta (B.1.617.2) variant. A second
284 limitation that must be kept in mind when interpreting the results reported here is that, while
285 clinical manifestation data for the 28 vaccine breakthrough cases for which sequencing was
286 possible are presented by vaccine brand they cannot support comparisons of effectiveness
287 between the brands, as there was unequal distribution of vaccine brands in the Central Texas
288 community.

289 In conclusion, our results show that, in early 2021, Central Texas experienced a rapid growth of
290 the alpha (B.1.1.7) variant, which then maintained dominance for several weeks, but towards the
291 end of the study period (June/July 2021) was itself rapidly displaced by the delta (B.617.2)
292 variant. Examination of vaccine breakthrough infections showed small numbers overall and with
293 each of these variants, with the distribution of the variants among breakthrough cases following a
294 similar pattern to the distribution in the overall COVID-19 cases in our study population.
295 Continued monitoring is needed, both to assess the longer-term impact of the delta (B.1.617.2)
296 variant's dominance on risk for vaccine breakthrough infections, and to identify any new
297 variants, or variants altering the distribution in circulating strains, that might impact risks for
298 disease and/or effectiveness of vaccines and therapeutics.

299 Lastly, the findings in this report are subject to at least two limitations. First, the number of
300 reported COVID-19 vaccine breakthrough cases is likely a substantial undercount of all SARS-
301 CoV-2 infections among fully vaccinated persons. This study relied on electronic health records
302 of patients within our healthcare system and data might not be complete or representative. Many
303 persons with vaccine breakthrough infections, especially those who are asymptomatic or who
304 experience mild illness, might not seek testing. Second, SARS-CoV-2 sequence data are
305 available for only a small proportion of the reported cases.

306 **Acknowledgment:** Authors would like to thank Kendall Hammonds for help with statistical analysis and
307 Briget Da Graca for editorial help.

308

309 **References**

- 310 1. COVID-19 Map - Johns Hopkins Coronavirus Resource Center.
- 311 2. Sanyaolu A, Okorie C, Marinkovic A, Haider N, Abbasi AF, Jafari U, Prakash S, Balendra
312 V. 2021. The emerging SARS-CoV-2 variants of concern. *Ther Adv Infect Dis*
313 8:20499361211024372.
- 314 3. Aleem A, Akbar Samad AB, Slenker AK. 2021. Emerging Variants of SARS-CoV-2 And
315 Novel Therapeutics Against Coronavirus (COVID-19) StatPearls. StatPearls Publishing,
316 Treasure Island (FL).
- 317 4. Wang R, Chen J, Gao K, Wei G-W. 2021. Vaccine-escape and fast-growing mutations in
318 the United Kingdom, the United States, Singapore, Spain, India, and other COVID-19-
319 devastated countries. *Genomics* 113:2158–2170.
- 320 5. Effectiveness of Covid-19 Vaccines against the B.1.617.2 (Delta) Variant | NEJM.
- 321 6. Hacisuleyman E, Hale C, Saito Y, Blachere NE, Bergh M, Conlon EG, Schaefer-Babajew
322 DJ, DaSilva J, Muecksch F, Gaebler C, Lifton R, Nussenzweig MC, Hatzioannou T,
323 Bieniasz PD, Darnell RB. 2021. Vaccine Breakthrough Infections with SARS-CoV-2
324 Variants. *N Engl J Med* 384:2212–2218.
- 325 7. Dolan PT, Whitfield ZJ, Andino R. 2018. Mapping the Evolutionary Potential of RNA
326 Viruses. *Cell Host Microbe* 23:435–446.
- 327 8. Liu Z, VanBlargan LA, Bloyet L-M, Rothlauf PW, Chen RE, Stumpf S, Zhao H, Errico JM,
328 Theel ES, Liebeskind MJ, Alford B, Buchser WJ, Ellebedy AH, Fremont DH, Diamond

- 329 MS, Whelan SPJ. 2021. Landscape analysis of escape variants identifies SARS-CoV-2
330 spike mutations that attenuate monoclonal and serum antibody neutralization. bioRxiv
331 2020.11.06.372037.
- 332 9. 2021. COVID-19 Breakthrough Case Investigations and Reporting | CDC.
- 333 10. Polack FP, Thomas SJ, Kitchin N, Absalon J, Gurtman A, Lockhart S, Perez JL, Pérez
334 Marc G, Moreira ED, Zerbini C, Bailey R, Swanson KA, Roychoudhury S, Koury K, Li P,
335 Kalina WV, Cooper D, Frenck RW, Hammitt LL, Türeci Ö, Nell H, Schaefer A, Ünal S,
336 Tresnan DB, Mather S, Dormitzer PR, Şahin U, Jansen KU, Gruber WC, C4591001
337 Clinical Trial Group. 2020. Safety and Efficacy of the BNT162b2 mRNA Covid-19
338 Vaccine. *N Engl J Med* 383:2603–2615.
- 339 11. Baden LR, El Sahly HM, Essink B, Kotloff K, Frey S, Novak R, Diemert D, Spector SA,
340 Rouphael N, Creech CB, McGettigan J, Khetan S, Segall N, Solis J, Brosz A, Fierro C,
341 Schwartz H, Neuzil K, Corey L, Gilbert P, Janes H, Follmann D, Marovich M, Mascola J,
342 Polakowski L, Ledgerwood J, Graham BS, Bennett H, Pajon R, Knightly C, Leav B, Deng
343 W, Zhou H, Han S, Ivarsson M, Miller J, Zaks T, COVE Study Group. 2021. Efficacy and
344 Safety of the mRNA-1273 SARS-CoV-2 Vaccine. *N Engl J Med* 384:403–416.
- 345 12. Bolze A, Cirulli ET, Luo S, White S, Cassens T, Jacobs S, Nguyen J, Ramirez JM,
346 Sandoval E, Wang X, Wong D, Becker D, Laurent M, Lu JT, Isaksson M, Washington NL,
347 Lee W. 2021. Rapid displacement of SARS-CoV-2 variant B.1.1.7 by B.1.617.2 and P.1 in
348 the United States. medRxiv 2021.06.20.21259195.
- 349 13. CDC. 2020. COVID Data Tracker. Centers for Disease Control and Prevention.

- 350 14. Paul P, France AM, Aoki Y, Batra D, Biggerstaff M, Dugan V, Galloway S, Hall AJ,
351 Johansson MA, Kondor RJ, Halpin AL, Lee B, Lee JS, Limbago B, MacNeil A,
352 MacCannell D, Paden CR, Queen K, Reese HE, Retchless AC, Slayton RB, Steele M, Tong
353 S, Walters MS, Wentworth DE, Silk BJ. 2021. Genomic Surveillance for SARS-CoV-2
354 Variants Circulating in the United States, December 2020-May 2021. *MMWR Morb Mortal*
355 *Wkly Rep* 70:846–850.
- 356 15. Executive Order GA-34. Texas Department of State Health Services.
- 357 16. COVID-19 In Texas (Dashboard).
- 358 17. COVID-19 in Texas - Texas Tests and Hospitals (Dashboard).
- 359 18. Butt AA, Khan T, Yan P, Shaikh OS, Omer SB, Mayr F. 2021. Rate and risk factors for
360 breakthrough SARS-CoV-2 infection after vaccination. *J Infect*
361 <https://doi.org/10.1016/j.jinf.2021.05.021>.
- 362 19. Jain VK, Iyengar KP, Ish P. 2021. Elucidating causes of COVID-19 infection and related
363 deaths after vaccination. *Diabetes Metab Syndr* 15:102212.
- 364 20. CDCMMWR. 2021. COVID-19 Vaccine Breakthrough Infections Reported to CDC —
365 United States, January 1–April 30, 2021. *MMWR Morb Mortal Wkly Rep* 70.
- 366 21. Workbook: COVID-19 Vaccine in Texas (Dashboard).
- 367
- 368

369 **Table I. Demographic, comorbidity, symptoms, other social and past medical history of BSWH**
 370 **vaccine breakthrough cases**

Baseline characteristics (total n=28)			
Demographics			
Gender %(n)	Male 39% (11)	Female 60% (17)	
Age (years)	Mean 54.9	Range 20-88	
Comorbid conditions			
Type 2 Diabetes Mellitus	28.6% (8)		
Asthma %(n)	17.9% (5)		
COPD %(n)	7.1% (2)		
CHF %(n)	3.6% (1)		
HTN %(n)	39.3% (11)		
Current Smokers	10.7 (3)		
Former Smokers	35.7% (10)		
Subjective symptoms			
	BNT162b2	Janssen COVID-19 Vaccine	mRNA-1273
	TOTAL 17	TOTAL 11	TOTAL 0
Asymptomatic 28.6% (8)	41.2% (7)	9.1% (1)	
Fever/Chills 25% (7)	17.6% (3)	36.4% (4)	
Headache 28.6% (8)	23.5% (4)	36.4% (4)	
Rhinorrhea 21.4% (6)	5.9% (1)	45.5% (5)	
Cough 46.4% (13)	23.5% (4)	81.8% (9)	
Otalgia/pressure 3.6% (1)	0% (0)	9.1% (1)	
Odynophagia 17.9% (5)	17.6% (3)	18.2% (2)	
SOB/Severe dyspnea 14.3% (4)	5.9% (1)	27.3% (3)	
Diarrhea 7.1% (2)	5.9% (1)	9.1% (1)	
Loss of taste and smell 14.3% (4)	5.9% (1)	27.3% (3)	

371

372

373 **Figure Legends.**

374 **1. SARS-CoV-2 variant distribution**

375 Nucleic Acid Amplification confirmed SARS-CoV-2 specimens were frozen until
376 sequenced. Data presented in the bar graph shows variant distribution for the respective
377 weeks and the trend lines for Alpha and Delta variants.

378 **2. Growth curves for Alpha and Delta variants**

379 Growth rate statistical analyses were performed in SAS 9.4. All graphs were created in R
380 version 3.5.1. To calculate growth curves, the Verhulst growth model, also known as the
381 logistic growth model was used to model population growth with constraints. Data
382 presented in Fig 2A shows growth curves for both Alpha and Delta variants from the
383 beginning of the year 2021 and Fig 2B rates for both variants for final 13 weeks.

384 **3. Vaccine breakthrough cases**

385 Data presented in the bar graph shows vaccine breakthrough cases for respective
386 sequencing weeks.

Fig 2A.

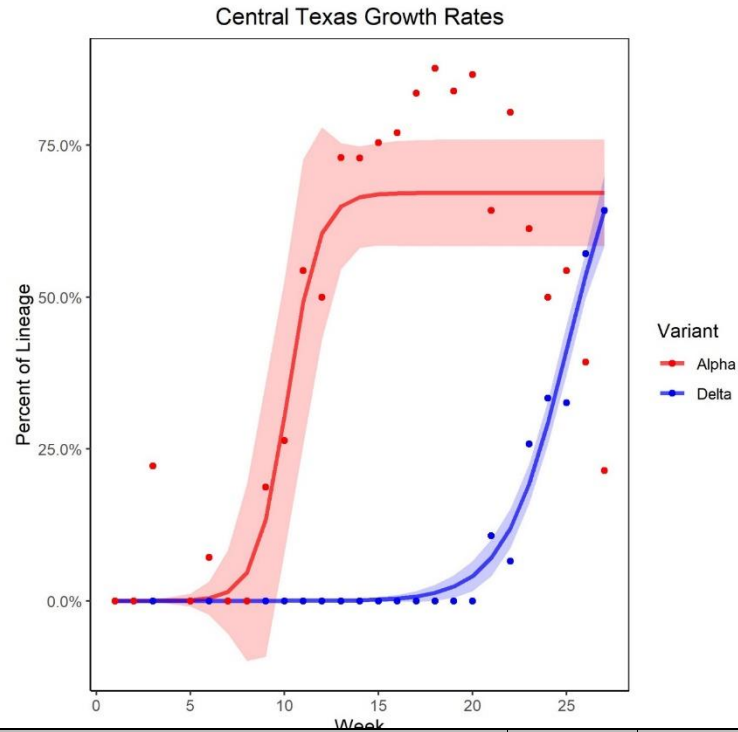
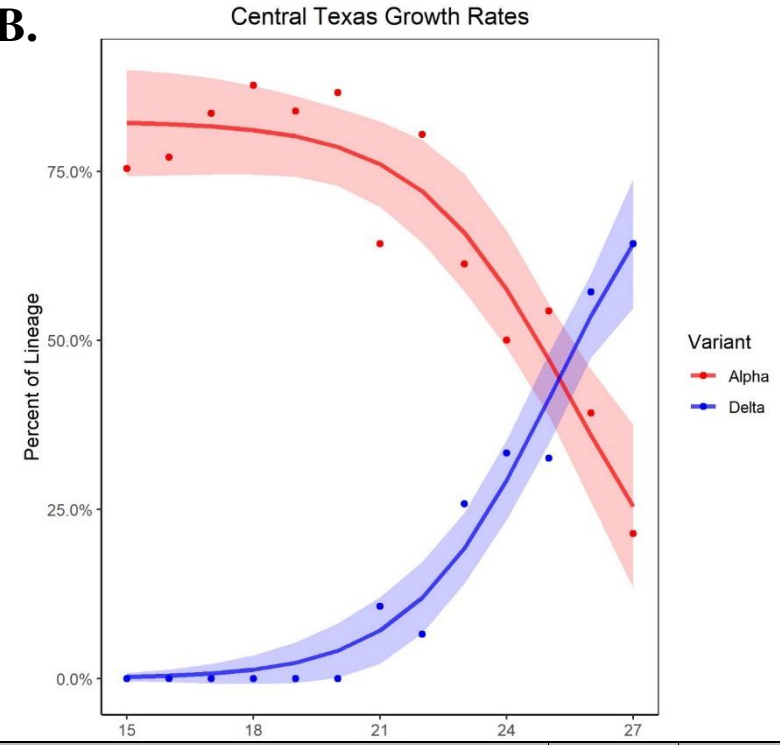


Fig 2B.



Variant	Parameter	Estimate	Approximate 95% Confidence Limits	
Alpha	Maximum Growth Rate	1.1989	-0.2475	2.6454
	Maximum proportion (carrying capacity)	0.6716	0.5838	0.7594
	Estimated time to half of maximum proportion (for calculation only)	10.1588	9.0058	11.3118
	R ² (goodness of fit – close to 1 is better)	0.9263		
Delta	Maximum Growth Rate	0.5836	0.3870	0.7803
	Maximum proportion (carrying capacity)	0.8585	0.5533	1.1637
	Estimated time to half of maximum proportion (for calculation only)	25.1236	23.6787	26.5685
	R ² (goodness of fit – close to 1 is better)	0.9793		

Variant	Parameter	Estimate	Approximate 95% Confidence Limits	
Alpha	Maximum Growth Rate	-0.5489	-0.8648	-0.2330
	Maximum proportion (carrying capacity)	0.8241	0.7393	0.9088
	Estimated time to half of maximum proportion (for calculation only)	25.5311	24.6518	26.4104
	R ² (goodness of fit – close to 1 is better)	0.9910		
Delta	Maximum Growth Rate	0.5835	0.2620	0.9049
	Maximum proportion (carrying capacity)	0.8587	0.3594	1.3581
	Estimated time to half of maximum proportion (for calculation only)	25.1248	22.7610	27.4886
	R ² (goodness of fit – close to 1 is better)	0.9793		

FLAGGED VACCINE BREAKTHROUGHS BY WEEK OF 2021 SYSTEM

