

## SUPPLEMENT

### METHODS

#### **Neutralization Assay**

Serum neutralization assays were performed as previously described by Crawford et al using luciferase-expressing lentiviral particles pseudotyped for the SARS-CoV-2 spike protein and HEK-293T cells over-expressing the ACE2 receptor (HEK-293T-hACE2).<sup>30</sup>

**Pseudovirus preparation** – Pseudotyped lentivirus was generated in HEK-293T cells transfected simultaneously with the following: helper plasmids encoding for Gag and Pol, Tat1b, and Rev1b; lentiviral backbone plasmid encoding for Luc2 and ZsGreen; and plasmid encoding the Wuhan-Hu-1 strain of SARS-CoV-2 Spike glycoprotein (Lentiviral Kit, BEI Resources, #NR-52948). After 72 hrs, the culture supernatant containing pseudovirus was harvested, syringe-filtered (0.45 µm), and stored at -80° C.

**Neutralization assay** - HEK-293T-hACE2 cells (80,000 cells/well; BEI Resources, #NR-52511) were cultured in white-walled microplates for 24 hr. Pseudovirus entry was assessed from luciferase activity using a GloMax Discover luminometer (Promega Corp., #GM3000) and Bright-Glo reagent (Promega, #E2610). Initially, to determine optimum conditions for the assay, the signal generated by various pseudovirus dilutions was assessed in the absence of serum (**Fig. S3**). A 10x-dilution of pseudovirus stock (plus 5 µg/mL polybrene, EMD Millipore Corp., #TR-2003-G) which yielded an RLU of 25,000 was used throughout. Negative controls i.e., supernatants from HEK-293T cells transfected with carrier DNA only (Promega, #E4881) (data not shown), or with a lentiviral plasmid lacking the Spike glycoprotein, yielded RLU values less than 0.2% of the undiluted pseudovirus (**Fig. S3**). For the neutralization assay itself, 7-point serial serum dilutions were incubated with pseudovirus for 1 hr at 37°C in a separate sterile plate. The serum-pseudovirus mixtures were then incubated with HEK-293T-hACE2 cells for 48 hr at 37° C. A potent neutralizing Spike RBD IgG antibody (BEI Resources, #NR-53795) was used as a positive control in each run (**Fig. S4**).

**Experimental Design and Data Analysis** - Neutralization assays were performed pre-vaccination and at days 14 and 42 post 1<sup>st</sup> injection of vaccine. Individual serum samples (50 µL / subject) were pooled with 7 subjects per pool in both COVID and control groups. On days 14 and 42, data points for both groups are the mean ± SE of 3 pools of the same 21 COVID and 21 control subjects. In contrast, the pre-vaccination timepoint was a single pool for each group.

Maximal pseudovirus uptake by HEK cells in the absence of serum was taken as 100% of control. IC<sub>50</sub> i.e., 50% inhibition of pseudovirus entry, was calculated using sigmoidal 4 factor polynomial, non-linear regression (GraphPad Prism version 9).

## FIGURE LEGENDS

**Figure S1. Violin plots showing pre-vaccination serum Spike RBD IgG antibody (left) and nucleocapsid IgG antibody (right) in individual COVID (●, n=22) and control (NC●, n=22) subjects.** Spike RBD IgG ( $p<0.01$ ) and nucleocapsid IgG ( $p<0.003$ ) antibody levels were significantly higher in the COVID compared to control groups prior to vaccination. Historical control samples (HC-●; n=57) were archived prior to the COVID-19 pandemic i.e., 2008. Horizontal dashed line demarcates 4 standard deviations from the mean of the historical controls.

**Figure S2. Nucleocapsid IgG antibody in COVID (●) and control (●) groups following the Pfizer BNT162b2 vaccine. Upper Panel:** Shows group mean  $\pm$  1 SE responses. Sample size for COVID group was: day 14 (n=16), day 42 (n=18). Sample size for control group was: day 14 (n=16), day 42 (n=17). **Lower Panel:** Individual COVID and control subjects. Note that nucleocapsid IgG antibody is undetectable in the control group and falls over time post vaccination in the COVID group.

**Figure S3. Uptake of pseudotyped SARS-CoV-2 lentivirus into HEK293T-ACE2 cells.**

Intact pseudotyped lentivirus (●) uptake shown as luciferase activity on the Y axis (relative light units - RLU) was assessed in the absence of serum. Pseudovirus dilutions are shown on the X axis. Lentivirus lacking SARS-CoV-2 Spike protein (○) was used as an inactive, negative control. Data are Group mean  $\pm$  1 SE from multiple wells (1 experiment representative of 3). Note that intact pseudovirus diluted 10X from stock generated a signal 500 fold greater than that produced by the inactive pseudovirus. Inset - Western blot showing marked increase in ACE2 receptor expression in 293T-ACE2 vs native 293T cells.

**Figure S4. Effect of neutralizing Spike IgG antibody on pseudotyped SARS-CoV-2 lentivirus entry into HEK293T-ACE2 cells.** Note that positive control Spike RBD neutralizing antibody (BEI #NR-53795) strongly inhibited pseudovirus uptake ( $IC_{50}=2.8$  ng/mL). Data are mean  $\pm$  1 SE of 4 experiments.

Figure S1

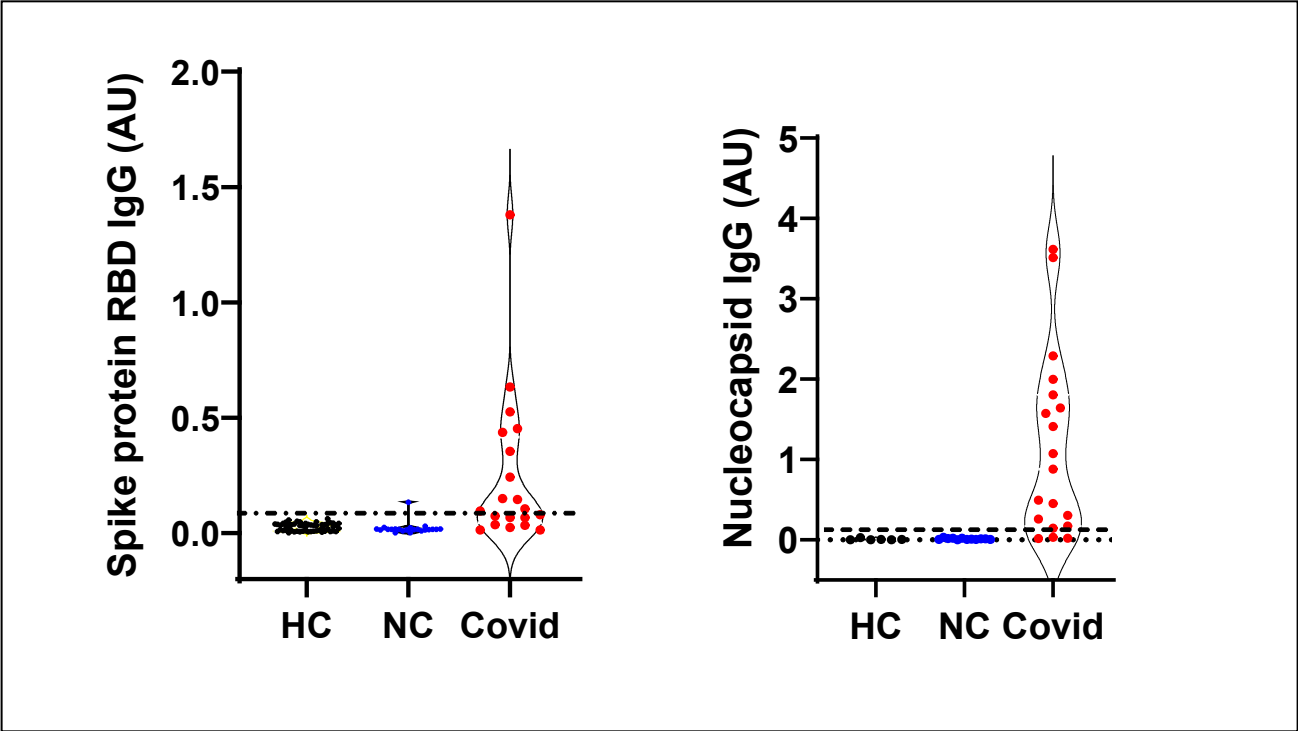


Figure S2

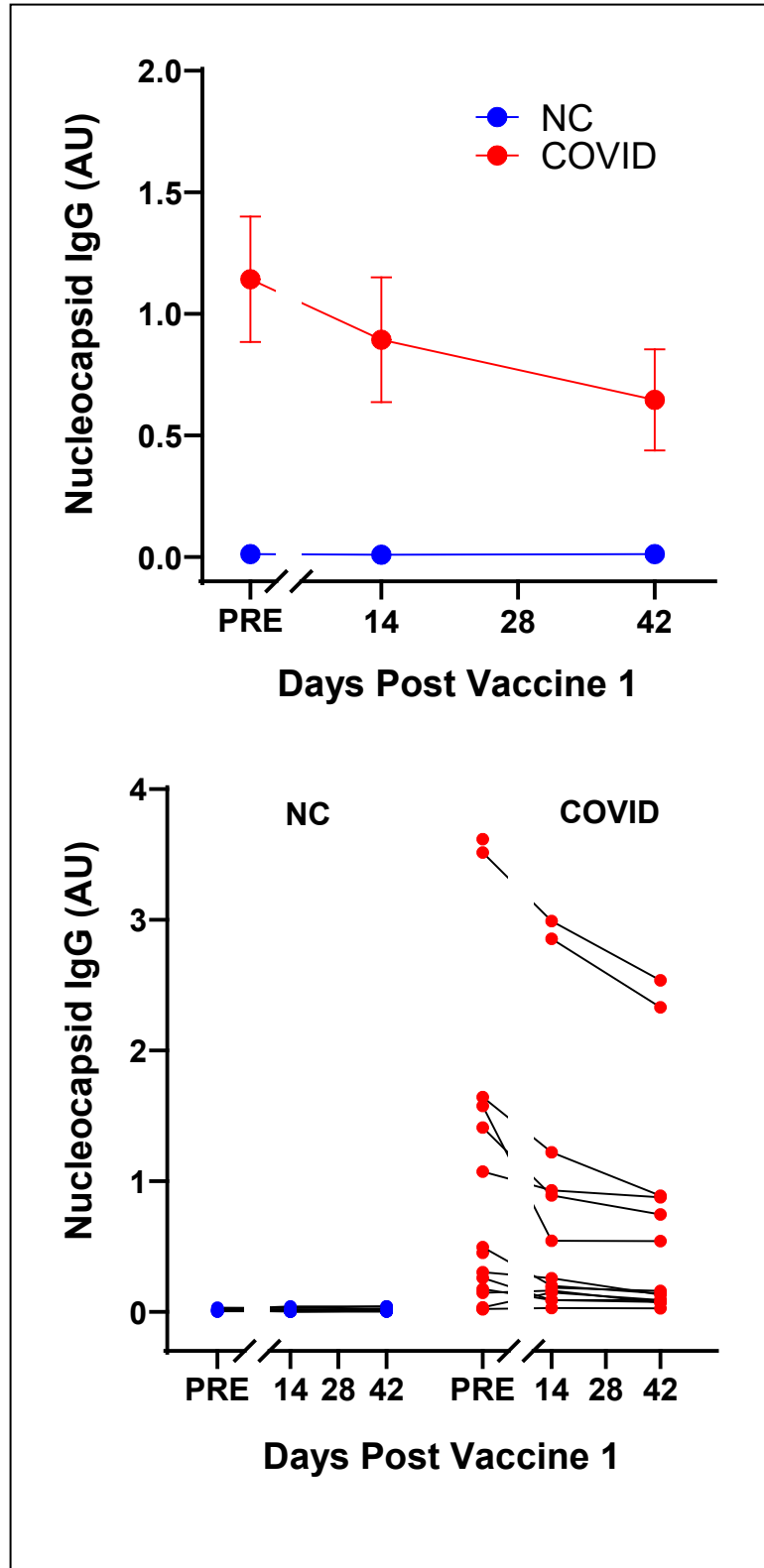


Figure S3

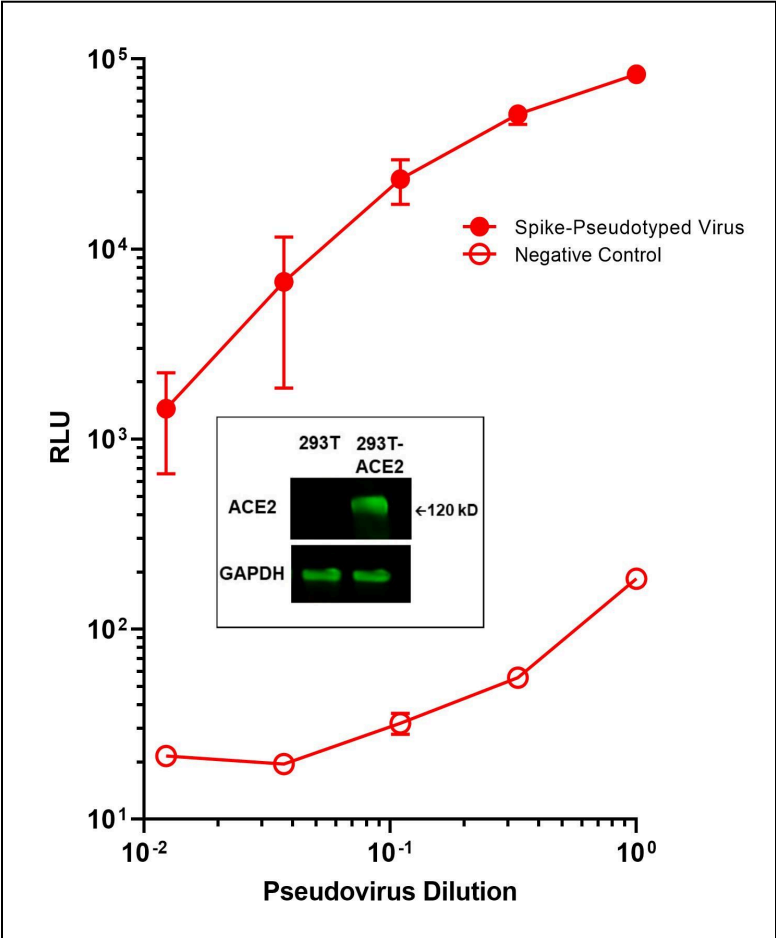


Figure S4

