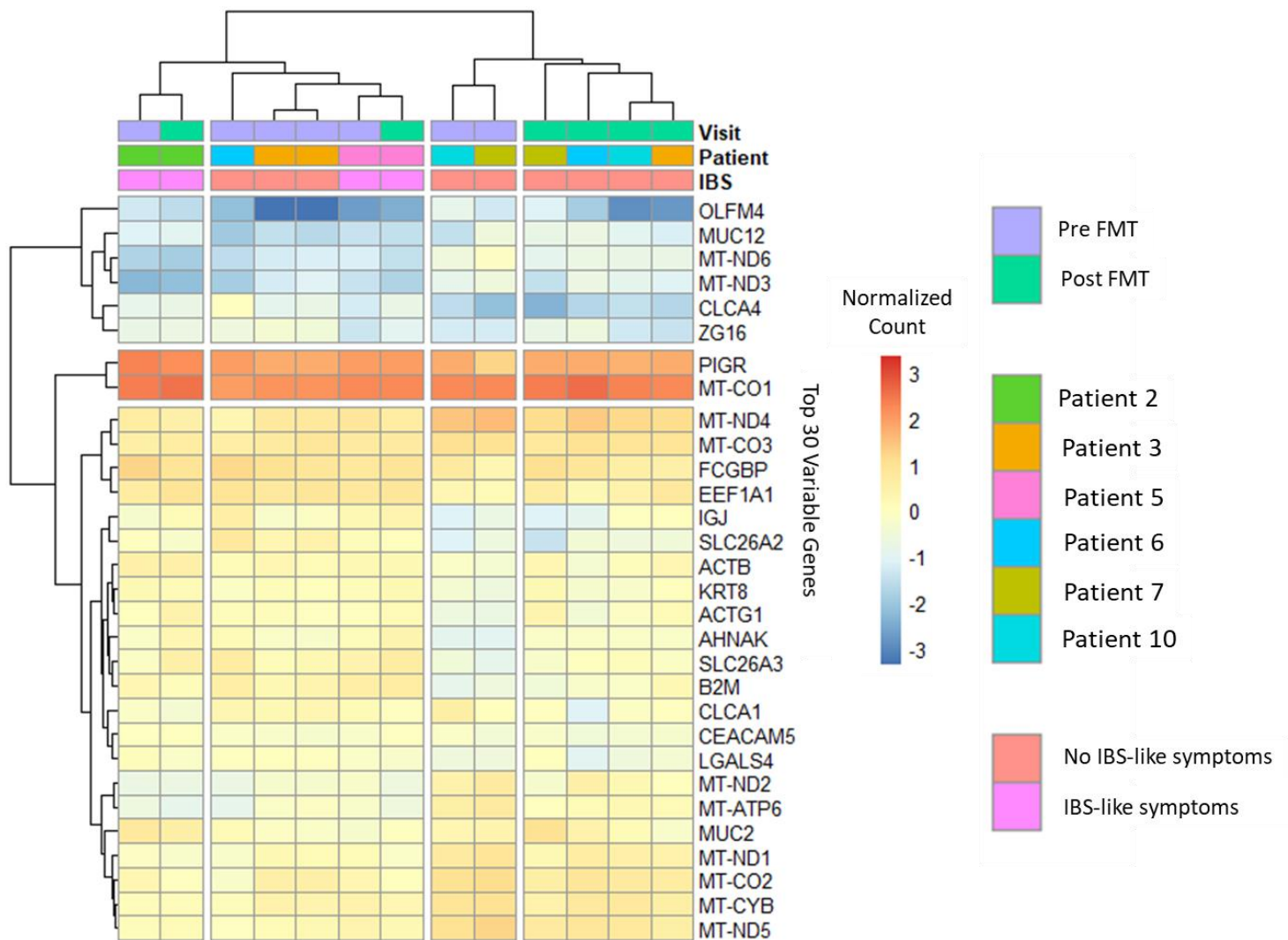
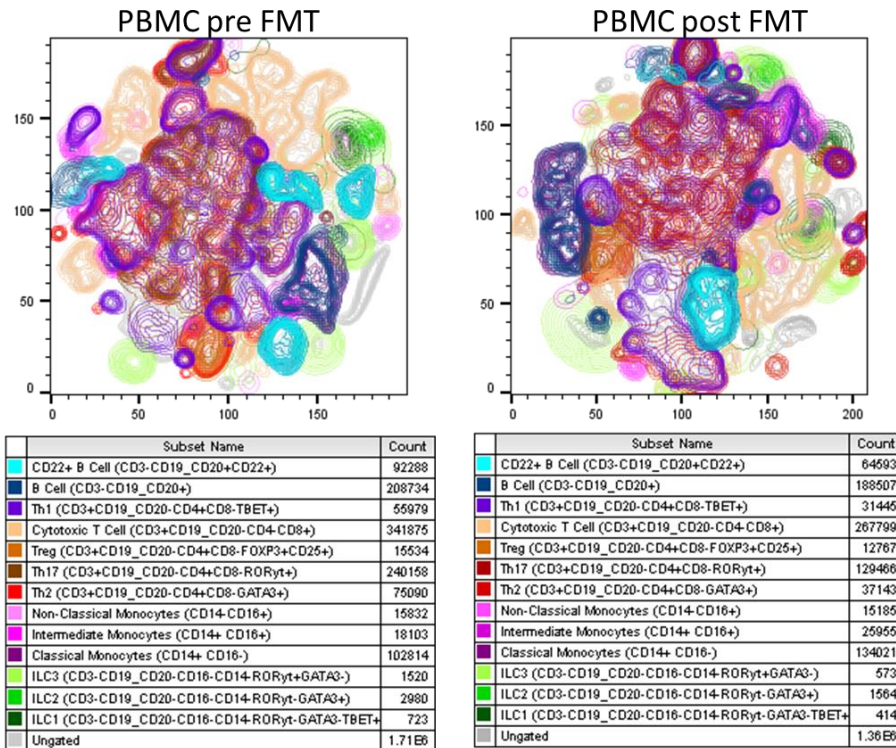
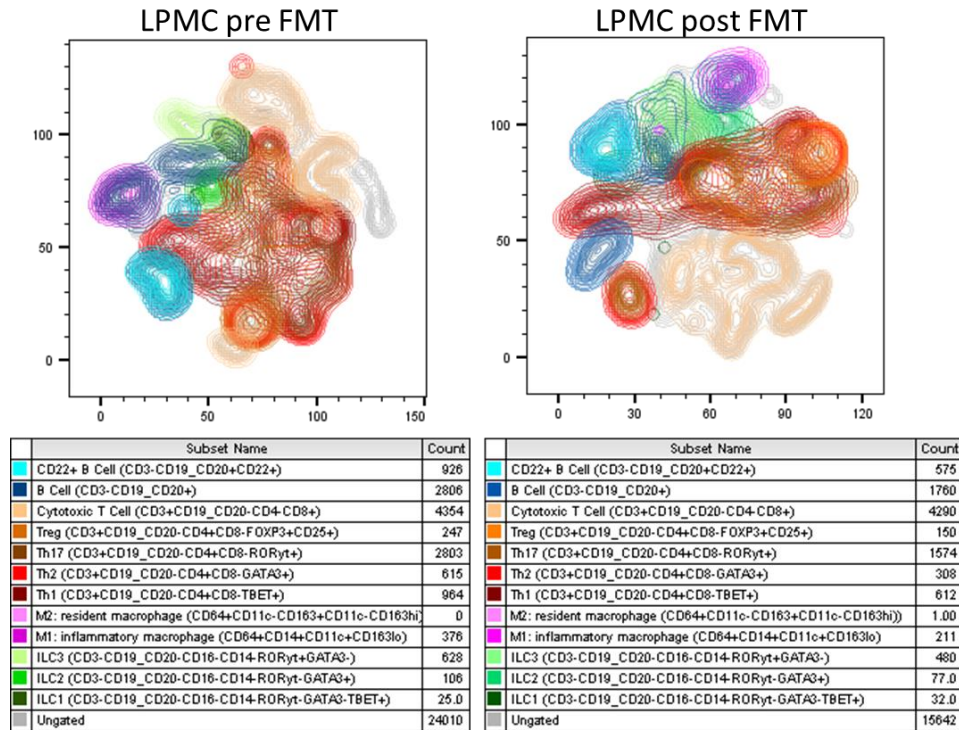


**Supplemental Figure S1. Correlations between different analyses show some relationships between gene transcription, protein concentration, and epithelial microbial abundance.** There was moderate induction of *IL1A* (A), *IL1B* (B), and *IL1RN* (C) transcription from pre to post FMT and these increases were not significant ( $p > 0.1$ , Wald test). For all three genes, the transcriptional response to FMT was variable from patient to patient. For the transcription of *IL1A*, some patients exhibited little change (patient 3) or a decrease from pre to post FMT (patient 6). For the transcription of *IL1B*, patient 10 exhibited a decrease in transcription, and there was little change in transcription for patients 5 and 7. For the transcription of *IL1RN*, patients 5 and 10 showed decreases in transcription. *IL1A* gene transcription had a negative correlation with IL-1a protein concentration, but for genes *IL1B* and *IL1RN*, there were positive correlations with their respective proteins. *Akkermansia* genus had a positive correlation with bile secretion pathway genes (E) and a negative relationship with IL-25 protein concentration (F).



**Supplemental Figure S2. Hierarchical clustering of the top 30 variable genes by standard deviation of RNA-seq counts show some separation between patients that developed IBS-like symptoms post FMT and those that did not.** Colored boxes near the top of the plot indicate the visit (purple for pre FMT and green for post FMT), patient ID, and whether the patient developed IBS-like symptoms post FMT (orange for no IBS-like symptoms, and pink for developing IBS-like symptoms), while below that is a heatmap of the normalized counts scaled around zero, where lower counts are blue and higher counts are red. In the first level of hierarchical clustering, the samples were separated into a group consisting of 5 samples from patients that did not develop IBS-like symptoms post FMT and another that included all samples from patients that did develop IBS-like symptoms post FMT.



**Supplemental Figure S2. tSNE groupings did not show any immune cell populations unique to pre or post FMT in both LPMCs and PBMCs.** The analyses were done separately between pre and post FMT in order to highlight any immune cell populations that were unique to pre or post FMT, here visualized as different colors. A contour map was used to show groupings within each immune cell subset. The color schemes and sizes of groupings were similar from pre to post FMT, showing no obvious differences in immune cell populations between pre and post FMT.

**Table S1. Pre vs Post FMT protein concentrations from Luminex assay. Linear mixed effect model with patient as random variable was used to calculate significance and a Benjamini-Hochberg method was used to adjust for multiple comparisons.**

Type	Analyte	Pre FMT		Post FMT		<i>p</i> value	FDR
		Median (pg/mL)	IQR (pg/mL)	Median (pg/mL)	IQR (pg/mL)		
Chemokine	MCP-1 (CCL2)	110.0	32.5	147.6	116.7	0.353	0.405
	MIP-1 $\alpha$ (CCL3)	17.7	18.6	31.1	11.3	0.235	0.307
	MIP-1 $\beta$ (CCL4)	39.6	9.3	39.9	20.6	0.824	0.824
	MCP-3 (CCL7)	13.9	4.4	35.7	11.0	0.00950	0.102
	EOTAXIN-1 (CCL11)	25.3	15.2	27.0	7.9	0.455	0.497
	MDC (CCL22)	28.6	14.0	24.0	21.4	0.710	0.726
	GRO $\alpha$ (CXCL1)	86.5	66.2	267.6	132.1	0.136	0.208
	IL-8 (CXCL8)	23.1	24.9	36.0	25.4	0.265	0.328
	MIG (CXCL9)	23799.5	17844.5	4073.0	8637.3	0.0183	0.102
	IP-10 (CXCL10)	379.0	432.9	62.9	95.6	0.147	0.209
Cytokine	Fractalkine (CX3CL1)	72.9	11.8	169.4	56.0	0.0232	0.102
	Flt-3 ligand	11.4	4.1	12.4	8.1	0.347	0.405
	IFN $\alpha$ 2	33.1	17.1	73.6	28.8	0.0161	0.102
	IFN $\gamma$	45.9	18.8	155.7	105.7	0.0347	0.102
	<b>IL-1<math>\alpha</math></b>	11.8	3.8	26.0	8.6	0.0424	0.102
	<b>IL-1<math>\beta</math></b>	9.7	10.3	28.8	10.8	0.0315	0.102
	IL-1RA	1080.5	969.4	3475.5	1246.3	0.0218	0.102
	IL-2	0.2	0.1	0.9	0.6	0.151	0.209
	IL-3	2.1	13.3	37.5	4.5	0.0044	0.0689
	<b>IL-4</b>	10.0	3.3	20.0	5.0	0.0583	0.125
	IL-5	0.8	0.2	2.2	1.1	0.0307	0.102
	IL-6	1.6	0.7	2.9	1.6	0.147	0.209
	IL-7	3.1	11.2	11.8	18.7	0.277	0.333
	IL-9	30.1	7.9	91.7	30.6	0.0040	0.069
	IL-10	149.2	87.9	441.4	242.1	0.0194	0.102
	IL-12p40	15.4	19.4	21.1	9.1	0.642	0.670
	IL-12p70	1.7	0.2	4.5	3.2	0.0214	0.102
	IL-13	11.7	3.7	35.5	20.5	0.0257	0.102
	IL-15	94.3	10.1	103.8	59.2	0.1077	0.181
	IL-17A	6.4	3.6	15.1	12.6	0.0400	0.102
	<b>IL-17E (IL-25)</b>	13.1	11.1	41.8	10.1	0.0016	0.069
	IL-17F	2.4	1.9	9.0	6.2	0.0324	0.102
	IL-18	18.6	14.7	11.1	2.2	0.245	0.311
	IL-22	142.1	188.0	317.9	80.4	0.0711	0.135
	IL-27	849.1	1083.4	1514.0	430.5	0.635	0.670
TGF- $\alpha$	13.8	9.0	23.0	14.2	0.0746	0.135	

	TNF- $\alpha$	17.6	8.7	29.1	24.4	0.374	0.419
	TNF- $\beta$	4.1	1.4	15.0	11.0	0.0494	0.111
	sCD40L	4105.5	1472.5	6123.0	3395.8	0.0742	0.135
Growth factor	EGF	25.0	3.9	51.1	20.3	0.0344	0.102
	FGF-2	9885.5	1934.5	13651.0	3927.5	0.0435	0.102
	G-CSF	76.0	92.9	157.1	343.3	0.137	0.208
	GM-CSF	0.0	0.2	1.6	1.6	0.0891	0.155
	M-CSF	476.8	80.1	683.8	926.6	0.120	0.194
	PDGF-AA	246.5	94.5	439.2	195.2	0.0652	0.133
	PDGF-AB/BB	0.0	0.0	123.0	167.5	0.0376	0.102
	VEGF	126.4	103.9	206.8	189.0	0.164	0.220

**Table S2. Flow Cytometry Panel**

	Marker	Fluorophore
Surface Stains	CCR7	BUV395
	CD103	BUV 563
	CD83	BUV 737
	CD22	BUV805
	CD14	Pacific Blue
	CD127	eFluor506
	CD11b	BV510
	CD45RA	BV570
	CD163	BV605
	CD4	BV650
	CD8	BV750
	HLA-DR	BV785
	CD45	QDOT 800
	CD11c	BB515
	CD3	Spark 550
	CD117	PerCP-Cy5.5
	gdTCR	PerCP-ef710
	CD25	PE-Dazzle 594
	CD294	PE-Cy5
	CD16	PE-Cy7
CD19/20	APC-Cy5.5	
CD56	AF700	
CD64	APC-fire 750	
	Marker	Fluorophore
Intracellular Stains	FoxP3	BV421
	Tbet	BV711
	Ki67	AF532
	Gata3	PE
	RORyt	AF647