

1 **A systematic review and meta-analysis of inpatient mortality**
2 **associated with nosocomial and community COVID-19 exposes the**
3 **vulnerability of immunosuppressed adults**

4
5 **Authors**

6 Mark J. Ponsford, BMBCh MSc, Clinician Scientist^{1,2*, †}

7 Tom JC Ward, MBBS, PhD, Clinical Lecturer in Respiratory Medicine^{3,4 †}

8 Simon Stoneham, BMBCh MRes, Specialist Registrar in Infectious Diseases and
9 Microbiology⁵

10 Clare M. Dallimore, MBBS, Anaesthetic Specialist Registrar⁶

11 Davina Sham, MBBS, Paediatric Specialist Registrar⁷

12 Khalid Osman, MBBS, Foundation Trainee⁸

13 Simon Barry, MB BS PhD, Consultant Respiratory Medicine^{8,9}

14 Stephen Jolles, MB BS MSc PhD, Professor and Consultant Immunologist¹

15 Ian R. Humphreys, PhD, Professor and Wellcome Trust Senior Research Fellow^{2,10}

16 Daniel Farewell, PhD, Reader in Statistics¹¹

17

18 * Corresponding author

19 † Joint equal first authors

20 **Affiliations**

21 ¹ Immunodeficiency Centre for Wales, University Hospital for Wales, Heath Park, Cardiff,
22 UK

23 ² Henry Wellcome Building, Division of Infection & Immunity, School of Medicine, Cardiff
24 University, UK.

25 ³ College of Life Sciences, Department Respiratory Sciences, University of Leicester,
26 University Road, Leicester LE1 7RH

27 ⁴ Institute for Lung Health, NIHR Leicester Biomedical Research Centre, Glenfield Hospital,
28 Leicester, UK

29 ⁵ Department of Global Health and Infection, Brighton and Sussex Medical School,
30 University of Sussex, Brighton, UK.

31 ⁶ Department of Anaesthetics, University Hospital for Wales, Heath Park, Cardiff, UK

32 ⁷ University Hospitals of Leicester NHS Trust, Leicestershire, UK

33 ⁸ Department of Respiratory Medicine, Cardiff and Vale University Health Board, Cardiff,
34 UK

35 ⁹ Respiratory Health Implementation Group, Swansea University, Swansea, UK.

36 ¹⁰ Systems Immunity Research Institute, School of Medicine, Cardiff University, Cardiff,
37 UK.

38 ¹¹ Division of Population Medicine, School of Medicine, Cardiff University, Cardiff, UK.

39

40 **Correspondence to:** Dr Mark J Ponsford; ponsfordm@cardiff.ac.uk

41 **Keywords:** covid-19, nosocomial, mortality, infection, immunodeficiency, risk. (Min.5-
42 Max. 8)

43

44 **Abstract**

45 **Background:** Little is known about the mortality of hospital-acquired (nosocomial) COVID-
46 19 infection globally. We investigated the risk of mortality and critical care admission in
47 hospitalised adults with nosocomial COVID-19, relative to adults requiring hospitalisation
48 due to community-acquired infection.

49 **Methods:** We systematically reviewed the peer-reviewed and pre-print literature from
50 1/1/2020 to 9/2/2021 without language restriction for studies reporting outcomes of
51 nosocomial and community-acquired COVID-19. We performed a random effects meta-
52 analysis (MA) to estimate the 1) relative risk of death and 2) critical care admission,
53 stratifying studies by patient cohort characteristics and nosocomial case definition.

54 **Results:** 21 studies were included in the primary MA, describing 8,246 admissions across 8
55 countries during the first wave, comprising 1517 probable or definite nosocomial COVID-19,
56 and 6729 community-acquired cases. Across all studies, the risk of mortality was 1.31 times
57 greater in patients with nosocomial infection, compared to community-acquired (95% CI:
58 1.01 to 1.70). Rates of critical care admission were similar between groups (Relative Risk,
59 RR=0.74, 95% CI: 0.50 to 1.08). Immunosuppressed patients diagnosed with nosocomial
60 COVID-19 were twice as likely to die in hospital as those admitted with community-acquired
61 infection (RR=2.14, 95% CI: 1.76 to 2.61).

62 **Conclusions:** Adults who acquire SARS-CoV-2 whilst already hospitalised are at greater risk
63 of mortality compared to patients admitted following community-acquired infection; this
64 finding is largely driven by a substantially increased risk of death in individuals with
65 malignancy or who had undergone transplantation. These findings inform public health and
66 infection control policy, and argue for individualised clinical interventions to combat the
67 threat of nosocomial COVID-19, particularly for immunosuppressed groups.

68 Systematic review registration: PROSPERO CRD42021249023

69 1 Introduction

70 Health-care-associated infections represent an enduring and serious threat to patient safety
71 (1,2), and are estimated to cost the National Health Service (NHS) £1 billion each year (3).
72 The transmission of respiratory viruses such as influenza in the healthcare environment are a
73 well-recognized cause of significant morbidity and mortality at the individual patient level
74 (4), however less is known regarding the significance of in-hospital (nosocomial)
75 transmission of the novel pandemic coronavirus SARS-CoV-2 causing COVID-19 (5). Since
76 its emergence in 2019, COVID-19 has placed enormous pressure on health-care systems
77 worldwide. Limited availability of testing, asymptomatic infections, and an evolving
78 understanding of routes of transmission have led to the exposure of potentially vulnerable
79 uninfected patients in the health-care setting (6).

80 The first and only rapid literature review and meta-analysis conducted to date on nosocomial
81 COVID-19 in hospitalised individuals was published in April 2020, early in the course of the
82 pandemic, and included only 3 studies reporting prevalence (7). The UK COVID-19 Clinical
83 Information Network (CO-CIN) estimated 31,070 nosocomial COVID-19 infections occurred
84 in England between February and July 2020, but made no assessment of the risk of mortality
85 (8). We recently reported our initial experience from the first wave of the COVID-19
86 pandemic across the nation of Wales, using data collected from 2508 hospitalised adults (9).
87 In this observational study, inpatient mortality rates for nosocomial COVID-19 ranged from
88 38% to 42% and were consistently higher than participants with community-acquired
89 infection (31% to 35%) across a range of possible case definitions. Whilst supported by other
90 studies (10,11), this finding contrasts with several earlier reports suggesting that nosocomial
91 COVID-19 infection is associated with a similar risk of inpatient mortality to community
92 acquired infection (12–14).

93 It is well known that individuals with pre-existing health conditions particularly ischemic
94 heart disease, diabetes, hypertension and immunosuppression (15–17), as well as older and
95 frailer individuals (18), are at increased risk of death from SARS-CoV-2. Such individuals
96 are also likely to be over-represented in inpatient cohorts (19). Together, this suggests a
97 robust assessment of the burden of mortality is urgently needed to examine the risk to
98 patients, identify vulnerable cohorts, and direct policies to ensure improvement. We therefore
99 performed a systematic review and meta-analysis of published and pre-print studies reporting
100 mortality associated with probable and definite nosocomial SARS-CoV-2 outbreaks during

101 the first wave of the COVID-19 pandemic. Our primary aim was to compare case fatality
102 rates of nosocomial and community-acquired COVID-19 cases within hospitalised adults.
103 Our secondary aims were to assess the variation in risk of mortality between patient sub-
104 groups, the relative risk of critical care admissions, and to probe the risk of bias associated
105 with these reports. Together, this provides a timely insight to the global burden of hospital-
106 acquired COVID-19, and highlights key patient groups at elevated risk of mortality due to
107 nosocomial exposure. These findings inform public health policy, and argue for enhanced
108 infection control alongside and access to clinical interventions to combat the threat of
109 nosocomial COVID-19.

110

111 **2 Methods**

112 We followed the Preferred Reporting Items for Systematic Reviews and Meta-Analyses
113 (PRISMA) 2020 (20). The study protocol was prospectively registered with Prospero
114 (CRD42021249023), having first confirmed no similar reviews were underway.

115 **2.1 Eligibility criteria**

116 **2.1.1 Participants**

117 Studies of hospitalised adults (≥ 16 years) within acute or long-term healthcare settings,
118 excluding care or residential homes. We specifically focused on outcomes for hospitalised
119 adults and excluded outcomes from health care workers with nosocomial infection, as the
120 latter has been recently evaluated (21).

121 **2.1.2 Exposures**

122 We included any implicit or explicit case definition of probable or definite nosocomial
123 acquisition as defined by the study authors, considering these further in sensitivity analyses.
124 Patients where COVID-19 origin was unclassified were excluded. Implementation of
125 universal screening of patients and healthcare workers, and changes to personal protective
126 equipment have recently been reported in detail elsewhere (22) and were not further
127 considered.

128 **2.1.3 Comparators**

129 The number and outcome of adults hospitalised with community-acquired SARS-CoV-2
130 within the same study setting.

131 **2.1.4 Outcomes**

132 The primary outcome was mortality of nosocomial SARS-CoV-2 infections in hospitalised
133 adult patients and community-acquired SARS-CoV-2 infection. Secondary outcomes
134 included rates of critical care admission, and qualitative analysis of case definitions, study
135 timing, and variation in reporting by country of origin.

136 **2.1.5 Study design**

137 Observational case series and cohort studies were included, provided they reported an
138 outbreak of nosocomial SARS-CoV-2 (defined as ≥ 2 patients with likely nosocomial

139 infection) within the hospital setting. Case reports with a single participant (high risk of bias,
140 unable to assess proportion/risk), exclusively outpatient populations (e.g. dental practice), and
141 non-patient populations (e.g. healthcare workers only) were therefore excluded.

142 **2.2 Search strategy to identify studies**

143 **2.2.1 Database search strings**

144 Ovid Medline, Embase, and the Social Policy & Practice databases and MedRvix.org were
145 searched from 1/1/2020 to 9/2/2021. A search string was designed that included the following
146 concepts: [SARS-CoV-2 OR sars-cov 2 OR COVID-19 OR covid 19 OR 2019-nCoV or
147 “COVID-19”] AND [nosocomial OR hospital-acquire* or nosocomial-acquire* OR cross
148 infection].

149 **2.2.2 Restriction on publication type**

150 No restrictions by language were imposed, and Google Translate was used to review full text
151 documents where required. In addition to considering full-text articles, publications available
152 as abstract only were included if they contained sufficient information to inform the primary
153 outcome.

154 **2.2.3 Study selection and screening**

155 Five clinicians (MJP, TJCW, SS, DS, KO, CD) independently screened titles and abstracts
156 against inclusion criteria using Rayyan (23). MJP retrieved the full-texts, and with TJCW and
157 SS screened these for inclusion. Conflicts were resolved by consensus. The selection process
158 is outlined in the PRISMA flow diagram (Figure 1).

159 **2.3 Data extraction**

160 Data was extracted using a pre-defined spreadsheet with fields as presented in Table 1, and
161 cross-checked for accuracy and completeness by a second reviewer. COVID-19 case
162 diagnosis rates by country were retrieved from [https://ourworldindata.org/coronavirus-](https://ourworldindata.org/coronavirus-source-data)
163 [source-data](https://ourworldindata.org/coronavirus-source-data) on 6th April 2021.

164 **2.4 Assessment of risk of bias**

165 Formal risk of bias on a study and outcome level were conducted using the Newcastle Ottawa
166 Score (NOS) for cohort studies and Joanna Briggs Institute (JBI) tools for case series and

167 prevalence studies (24), as recommended by the National Institute for Clinical Excellence
168 (NICE) (25). Assessment was performed by 2 independent reviewers, with arbitration with a
169 third as required. We defined adequate follow-up as ≥ 28 days, or complete follow-up until
170 death or discharge, to account for the potential unequal time points in disease course at study
171 entry between community and nosocomial patients. We considered principal areas likely to
172 introduce bias, indicated by * in Tables 2-4, equating to a minimum score of 5 across tools.
173 Briefly, these assessed quality of selection: a) representativeness of the average nosocomial
174 covid-19 case within the patient group, based on study design, b) ascertainment bias –
175 requiring evidence of methods to mitigate this, c) sufficient description of study subjects and
176 case definition – requiring an explicit nosocomial case definition given and applied; and
177 quality of outcome assessment: a) sufficient follow-up, and b) adequacy of follow-up –
178 requiring sufficient participants to have reached the pre-specified outcome at time of
179 reporting.

180 **2.5 Data Analysis**

181 Analysis was performed using R version 4.0.2 in RStudio (Version 1.3.959, R Foundation,
182 Vienna, Austria) using the metafor package. Full details can be found within the online
183 supplementary methods. Briefly, a random effects model was used to compare relative risk of
184 mortality and ICU admission between patients with community-acquired and nosocomial
185 COVID-19. Full details of the statistical methods used are available at [https://cran.r-](https://cran.r-project.org/web/packages/metafor/metafor.pdf)
186 [project.org/web/packages/metafor/metafor.pdf](https://cran.r-project.org/web/packages/metafor/metafor.pdf). Residual maximum likelihood (REML) was
187 used to estimate the heterogeneity variance (τ^2) (26). We conducted subgroup analyses based
188 on classifications agreed by the reviewers reflecting the cohort best represented by the
189 studies, i.e. in cohorts that were clinically and methodologically similar (27). Cochrane's Q-
190 test and I^2 were used to assess the degree of inconsistency across studies (28,29). Two-sided
191 statistical significance was set at $p < 0.05$. We conducted the following pre-specified
192 sensitivity analyses:

- 193 • 1: Studies providing an explicit definition of nosocomial acquisition
- 194 • 2: Studies providing outcomes associated with a standardised >14 day definition for
195 'definite' nosocomial covid-19
- 196 • 3A: Excluding studies with a higher risk of bias (indicated by total quality score <5)
- 197 • 3B: Fulfilling all 5 core study quality domains (indicated by * within tables 2-4).
- 198 • 4: Excluding studies with imputed data (i.e. 0.5 used in place of zero-count cells)

199 Additional data visualization was performed in R using the ggplot2 package.

200

201 **2.6 Reporting bias assessment**

202 Funnel plot and Egger's test were used to assess for potential publication bias, supported by
203 qualitative evaluation.

204 **2.7 Certainty assessment**

205 The certainty of evidence was rated using the Grading of Recommendations, Assessment,
206 Development and Evaluations (GRADE) approach (30) using the GRADEPro online tool,
207 <https://gradepro.org/>.

208 **3 Results**

209 **3.1 Study selection and characteristics**

210 We screened a total of 1478 unique abstracts and reviewed 195 full texts to identify 67
211 studies describing hospital nosocomial COVID-19 outbreaks. Principal reasons for study
212 exclusion are shown in Figure 1. A further 48 studies were excluded as they did not report
213 mortality within both community and nosocomial-acquired COVID-19 patient groups. This
214 left 21 studies for primary meta-analysis (9–13,31–46), summarised in Table 1, with both
215 retrospective (n=14) and prospective (n=7) study designs including a range of medical and
216 surgical patient populations. Together, these described 8246 hospitalised adults admitted
217 between 1st March 2020 and 13th July 2020 across 7 countries, comprising 1517 (18%)
218 probable or definite nosocomial COVID-19 and 6729 (82%) community-acquired cases.
219 Overall mortality was 30.5% (2516/8246), with 575 deaths attributed to nosocomial COVID-
220 19 (37.9% mortality rate) and 1941 (28.9% mortality rate) to community-acquired COVID-
221 19. An additional study reporting the critical care admissions but without mortality by
222 probable-nosocomial origin was identified, and is included Table 1 (47).

223 **Figure 1: PRISMA diagram**

224

225 **Table 1: Evidence summary for studies included within meta-analyses**

226

227 **3.2 Study timing in pandemic course and availability of universal RT-PCR testing**

228 We explored the timing of patient identification within these reports relative to national
229 COVID-19 diagnosis rates based on publicly available data within the UK (Figure 2), and
230 wider countries (Supplementary S2). All included studies dealt with the initial wave of the
231 pandemic. Consistent with the early timing of these reports, no studies reported the use of
232 universal RT-PCR screening of patients in prior to or during admission from the outset of the
233 study, outside of the setting nosocomial outbreaks.

234

235 **Figure 2: Timing of UK studies relative to national COVID-19 diagnosis rates**

236

237 **3.3 Case definitions**

238 A positive reverse transcription polymerase chain reaction (RT-PCR) SARS-CoV-2 result
239 was explicitly used as primary method of diagnosis in 17/21 studies included in the mortality
240 meta-analysis (76%), supported by clinical-radiological features (12,33,41), or based upon
241 laboratory-based diagnosis (potentially including serology) (43,45). As shown in Table 1, a
242 range of case definitions were employed to distinguish community-acquired and nosocomial
243 COVID-19. A fixed interval between admission and diagnosis was employed in 14/21 (62%)
244 ranging from >2 days (45) to >14 days (12), supplemented by additional patient-level clinical
245 data (41) and viral whole genome sequencing (32). Seven studies primarily employed
246 epidemiological nosocomial definitions, for instance a history of close contact with positive
247 cases (n=3, (31,39,43)), or the absence of symptoms on admission with subsequent positive
248 test (n=2, (10,35)). Two studies gave no explicit nosocomial case definition (33,36). Four
249 studies (19%) explicitly considered patients who had been recently discharged.

250

251 **3.4 Risk of bias in studies**

252 We screened study quality through self-identified use of reporting standards. Three (14%)
253 reports referenced the STrengthening the Reporting of OBservational studies in
254 Epidemiology (STROBE) statement (9,12,36). Tables 2-4 show the formal risk of bias
255 assessments. Overall, 17/21 (81.0%) achieved a total score of 5 or more. Utilising our more

256 stringent assessment of study quality across all core domains (indicated by *) only 9/21
257 (43.0%) were identified, with 80% case series, 62.5% cohort, and 37.5% of prevalence rated
258 at high risk of bias.

259 **Table 2: Risk of Bias Assessment - cohort studies (n=8)**

260 **Table 3: Risk of bias assessment - prevalence studies (n=8)**

261 **Table 4: Risk of bias assessment - case series (n=5)**

262

263 **3.5 Meta-analysis of mortality in patients with nosocomial relative to community-** 264 **acquired COVID-19**

265 Meta-analysis using a random effects model is shown in Figure 3. Across 21 studies, the risk
266 of mortality was 1.31 (95% CI: 1.01 to 1.70) times greater in patients with probable or
267 definite nosocomial infection, compared to those admitted with community-acquired
268 COVID-19. Substantial heterogeneity was evident between the included studies ($Q=76.3$, $p <$
269 0.0001 ; $I^2 = 82.3\%$, 95% CI: 62.0 to 94.6%). We performed sub-grouping by patient cohort
270 characteristics, including an immunosuppressed sub-group comprising 3 studies reporting
271 outcomes from adult recipients of solid-organ or bone marrow transplants, or with a diagnosis
272 of haematological or solid-organ cancers. These 1069 patients (152 nosocomial, 917
273 community-acquired) showed an elevated risk of death associated with nosocomial COVID-
274 19, relative to those with community-acquired infection: RR= 2.14, 95% CI: 1.76 to 2.61.
275 This effect appeared consistent across the 3 studies, but with considerable uncertainty
276 associated with estimates of heterogeneity ($Q=1.24$, $p=0.54$; $I^2 = 0.00\%$, 95% CI: 0.00 to
277 96.6%). General medical and geriatric admissions were also suggesting of an increased risk
278 of mortality with nosocomial COVID-19 (RR 1.14 and 1.35 respectively), but did not reach
279 statistical significance.

280

281 **Figure 3: Relative risk of mortality**

282

283 **3.6 Meta-analysis of critical care admission**

284 Critical care admission rates were reported in 8 studies reporting nosocomial outbreaks
285 (11,13,34,39,42,44,45,47); with a crude rate of 27/252 (10.7%) in patients with nosocomial
286 COVID-19 compared to 359/1396 (25.7%) in those hospitalised with community-acquired
287 COVID-19. Meta-analysis is shown in Figure 4, with the pooled relative risk indicating this
288 trend did not reach statistical significance (RR= 0.70, 95% CI: 0.48 to 1.03).

289

290 **Figure 4: Relative risk of critical care admission**

291

292 **3.7 Sensitivity analysis**

293 To challenge the robustness of our findings, we examined the effect of varying the level of
294 certainty of nosocomial case diagnosis, study quality, and use of imputed mortality data
295 across 5 sensitivity analyses, and assessed if individual studies conferred undue influence
296 (Supplementary S3). These suggested that no individual study had undue influence on the
297 results. Exclusion of studies across all sub-groups led to similar point estimates for the
298 relative risk of mortality, but did not reach statistical significance in 4 of 5 assessments.
299 Considering the immunosuppressed subgroup, the directionality and significance of our
300 findings remained unchanged across 4 of 5 sensitivity analyses. Summary statistics for age
301 were reported in 1291 nosocomial (mean 77.2 years), and 4542 community-acquired
302 COVID-19 (mean 70.1 years) admissions. Gender was available in 1313 nosocomial (49.7%
303 male) and 4375 (56.6% male) community-acquired COVID-19 cases. These differences
304 precluded meta-regression analysis.

305 **3.8 Reporting biases**

306 We assessed for publication bias by examining the cumulative evidence distribution for our
307 primary outcome using a funnel plot (Figure 5). Egger's test did not suggest funnel plot
308 asymmetry ($p=0.51$). Given the potentially sensitive implications of nosocomial infection
309 (48), we hypothesised selective reporting of mortality might exist between nations. We
310 therefore compared the frequency and origin of reports identified at the full text eligibility
311 review stage meeting our study definition of a nosocomial outbreak ($n= 67$), with those
312 including mortality as an outcome within this patient group independent of community

313 outcomes. Overall 38 studies included mortality as an outcome (including 5 studies without
314 observed nosocomial deaths), equating to a mortality reporting rate of 57%. Table 5 shows
315 variation in the rate of mortality reporting by country. Reports from the UK accounted for
316 21/67 (31%) of nosocomial reports, and included mortality an outcome in 15/21 (71%). By
317 contrast, reports from the United States contributed 7/67 (10%) of international reports
318 describing nosocomial outbreaks, however none reported mortality as an outcome measure.
319 This deviated significantly from the predicted international reporting rate (Fisher’s exact test,
320 $p = 0.0018$). Together, this suggests publication bias may be present.

321

322 **Figure 5: Funnel Plot**

323

324 **Table 5: Rates of mortality reporting in nosocomial COVID-19 outbreaks, by country of**
325 **origin**

326

327 **3.9 Certainty of evidence**

328 We assessed the quality of evidence supporting the statement: “In the general adult
329 population, nosocomial COVID-19 is associated with a greater risk of inpatient mortality
330 compared to individuals hospitalised with community-acquired COVID-19” as very low; and
331 low/moderate in relation to “In an immunosuppressed adult population, nosocomial COVID-
332 19 is associated with a greater risk of inpatient mortality compared to individuals hospitalised
333 with community-acquired COVID-19”. Full GRADE assessment is shown in Table 6.

334

335 **Table 6: Grading of Recommendations, Assessment, Development and Evaluations**
336 **(GRADE) assessment**

337

338 4 Discussion

339 In this systematic review and meta-analysis addressing the burden of nosocomial COVID-19,
340 we show the case fatality rate for nosocomial COVID-19 appears greater than community-
341 acquired COVID-19, with a relative risk of 1.31 (95% CI: 1.01 to 1.70). Strikingly, we found
342 that patients with malignancy (11,37) or transplant recipients (33) had approximately double
343 the risk of dying after acquiring COVID-19 in hospital, compared to those hospitalised with
344 community-acquired infection. This equates to a crude absolute mortality rate of 50.7% vs
345 23.8% respectively, with a consistent effect across studies and proved robust to sensitivity
346 analyses assessing multiple assumptions around the certainty of nosocomial COVID-19
347 diagnosis and study quality.

348 The convergence of widely recognized risk factors for adverse outcomes in community-
349 acquired COVID-19 in hospitalised patient groups, such as advanced age and frailty, are
350 likely to contribute to the exaggerated mortality burden observed with nosocomial COVID-
351 19. A range of potential mechanisms are likely to link individuals with cancer or recipients of
352 transplants with mortality risk from nosocomial COVID-19, including both
353 immunosuppression linked to the underlying condition and/or treatments and exposure due to
354 health care requirements necessitating admission to the acute hospital environment. This is
355 convergent with the heightened risk of mortality from COVID-19 independently reported for
356 individuals with inherited and acquired forms of immunodeficiency (16), and the wider
357 susceptibility of patients with haematological malignancy across a spectrum of healthcare-
358 associated infections (49). Individual studies suggested a relationship between mortality rates
359 and degree of immunosuppression, with the greatest mortality rate observed in patients with
360 haematological malignancies who had recently received chemotherapy (37). This is
361 consistent with results from patients enrolled within the UK Coronavirus Cancer Monitoring
362 Project, which included 227 patients with haematological malignancies diagnosed with
363 COVID-19. In this setting, recent chemotherapy approximately doubled the odds of dying
364 during COVID-19-associated hospital admission (odds ratio: 2.09; 95% CI 1.09 to 4.08) after
365 adjusting for age and gender; however, this study did not account for nosocomial infection.

366 Our study has several strengths. We systematically screened both the peer-reviewed and pre-
367 print literature, leveraging the enhanced availability of full-texts by many publishers, to
368 summarise the outcomes of 8246 adults hospitalised with COVID-19 during the first wave of
369 the pandemic across 8 countries. This work establishes a relevant baseline for subsequent and

370 future waves of the COVID-19 pandemic, and to our knowledge, represents the first meta-
371 analysis of nosocomial COVID-19 mortality rates published to date. Zhou et al reported a
372 rapid review and meta-analysis of nosocomial infections due to a range of viral pandemic
373 threats, but included only 3 studies with SARS-CoV-2 and did not consider mortality as an
374 outcome (7). In order to support the generalisability of our findings, we included studies with
375 implicit and explicit definitions of nosocomial COVID-19. Accordingly, we catalogued a
376 wide spectrum of case definitions, including combined epidemiological and genomic viral
377 sequencing (32). We controlled for this variation in case definitions within our sensitivity
378 analyses, for instance utilising outcomes meeting consensus international criteria for definite
379 nosocomial infection wherever available. Although our funnel plot did not indicate
380 publication bias amongst studies reporting mortality, our sequential literature review process
381 suggests variation in the frequency of mortality reporting associated with studies describing
382 nosocomial COVID-19 outbreaks. In particular, we identified no studies reporting mortality
383 associated with nosocomial COVID-19 infection outbreaks originating from the United
384 States, despite the high rate of COVID-19 cases and mortality in this country to date (50). Of
385 the 7 studies we identified reporting nosocomial COVID-19 at the full text review stage, four
386 dealt only with incidence (51–54), whilst three reported mortality but without reference to
387 probable origin (55–57). Whilst we cannot exclude the risk of reporting bias, given the
388 sensitive nature of this topic (48), this observation highlights successful infection control
389 practices. Reporting on experience from a large US academic medical centre, Rhee et al
390 found that despite a high burden of COVID-19, only two patients likely acquired COVID-19
391 during their admission (51). Generalising these practices may constitute a challenge across
392 global health care settings acutely, for instance shortages of negative pressure isolation rooms
393 were reported during the first wave in UK hospitals (44), but remain relevant as part of a
394 longer-term “rebuild better” strategy.

395 Our study also has limitations, including its focus on hospitalised patients during the first
396 wave of the pandemic. This is likely to introduce both selection and reporting bias, as during
397 this period limited capacity meant RT-PCR testing was initially restricted to symptomatic
398 individuals in the community (40,41). Estimates of age-stratified infection fatality rates in the
399 adult UK general population during the first wave ranged from 0.03% (20-29 years) to 7.8%
400 (over 80 years) (58), far lower than the inpatient comparator mortality rate used in our
401 analysis. By contrast, individuals admitted during nosocomial outbreaks were more likely to
402 be subject to screening, resulting in sampling of individuals across the true spectrum of

403 disease severities (34,44), including earlier in their disease course. Our risk of bias
404 assessment therefore focused on study inclusion and adequate follow-up as essential domains,
405 to account for unequal disease progression at study entry between groups. Taken together,
406 this considerably strengthens evidence for the statement: “nosocomial COVID-19 was
407 associated with a greater risk of mortality, compared to individuals with community-acquired
408 COVID-19 in the general adult population during the first wave of the COVID-19
409 pandemic”. Due to limitations in the summary data available, we were unable to perform
410 planned meta-regression for factors such as age, gender, frailty, ethnicity or deprivation.
411 Similarly, as studies typically reported all-cause mortality, we cannot exclude that deaths may
412 have occurred that were not directly linked to COVID-19. However, our findings are
413 supported by examination of COVID-19-linked mortality data within the United Kingdom
414 (59,60), which indicate that COVID-19 multiplies the risk of death associated with various
415 underlying diagnoses (59).

416 In conclusion, we systematically gathered data from the international literature and
417 demonstrate an increased relative risk of mortality associated with nosocomial and
418 community COVID-19. This maybe underestimated due to consideration of only hospitalised
419 individuals. In particular, we strengthen observational evidence indicating individuals with
420 malignancy or transplant recipients are at markedly elevated risk of death when infected by
421 SARS-CoV-2 in hospital, compared to the community. Although focusing on the first wave,
422 our findings are likely of ongoing significance given confirmation of an impaired SARS-
423 CoV-2 vaccine response in multiple immunosuppressed patient groups (61–63), and the
424 continued occurrence of new viral variants with enhanced transmissibility. Together, these
425 findings inform policy makers by strongly advocating continued public health surveillance,
426 stringent infection control measures (51), and access to individualised clinical interventions
427 (64,65) to combat the threat of nosocomial COVID-19.

428 **5 Conflict of Interest**

429 All authors declare that the research was conducted in the absence of any commercial or
430 financial relationships that could be construed as a potential conflict of interest.

431 **6 Author Contributions**

432 MJP conceived the project and drafted the protocol with TJCW and SS, with supervision
433 from SB, SJ, IH, and DF. MJP, SS, TJCW, KO, CD, and DS screened abstracts and
434 performed the full text review. MJP, TJCW and SS performed the data quality assessment.
435 TJCW and MJP analysed the data. MJP prepared the first draft of the manuscript. All authors
436 contributed to manuscript revision, read, and approved the submitted version.

437 **7 Funding**

438 This work was partly funded by UKRI/NIHR through the UK Coronavirus Immunology
439 Consortium (UK-CIC). MJP is supported by the Welsh Clinical Academic Training (WCAT)
440 programme and a Career Development Award from the Association of Clinical Pathologists
441 and is a participant in the NIH Graduate Partnership Program. IH is a Wellcome Trust Senior
442 Research Fellow in Basic Biomedical Sciences. The funding sources did not have any role in
443 designing the study, performing analysis or communicating findings.

444 **8 Ethical approval**

445 The data used in this work obtained relevant participant consent and ethical approval,
446 therefore no additional approvals were required.

447 **9 Patient and public involvement**

448 No patients or participants were involved in setting the research question or the outcome
449 measures, nor were they involved in developing plans for design or implementation of the
450 study. No patients were asked to advise on interpretation or writing up of results. The
451 published manuscript relating to this work will be sent to the UK Coronavirus Immunology
452 Consortium (UKCIC) for appropriate dissemination to participants.

453 **10 Supplementary Material**

454 Supplementary Materials are available online.

455 **11 Data Availability Statement**

456 The datasets analysed for this study will be made available upon written request to the
457 corresponding author.

458 **12 References**

- 459 1. Burke JP. Infection Control — A Problem for Patient Safety. *New England Journal of*
460 *Medicine*. 2003;348(7):651–6.
- 461 2. Allegranzi B, Nejad SB, Combescure C, Graafmans W, Attar H, Donaldson L, et al.
462 Burden of endemic health-care-associated infection in developing countries: systematic
463 review and meta-analysis. *The Lancet*. 2011;377(9761):228–41.
- 464 3. Senior K. Can we keep up with hospital-acquired infections? *The Lancet Infectious*
465 *Diseases*. 2001;1:8.
- 466 4. Godoy P, Torner N, Soldevila N, Rius C, Jane M, Martínez A, et al. Hospital-acquired
467 influenza infections detected by a surveillance system over six seasons, from 2010/2011 to
468 2015/2016. *BMC Infectious Diseases*. 2020 Jan 28;20(1):80.
- 469 5. NHS England and NHS Improvement, Chief Executives and Chief Operating Officers
470 of all NHS Trusts and Foundation Trusts, CCG Accountable Officers. *Minimising*
471 *nosocomial infections in the NHS*. 2020.
- 472 6. Bak A, Mugglestone MA, Ratnaraja NV, Wilson JA, Rivett L, Stoneham SM, et al.
473 SARS-CoV-2 routes of transmission and recommendations for preventing acquisition: joint
474 British Infection Association (BIA), Healthcare Infection Society (HIS), Infection Prevention
475 Society (IPS) and Royal College of Pathologists (RCPATH) guidance. *Journal of Hospital*
476 *Infection* [Internet]. [cited 2021 Jun 24]; Available from:
477 <https://doi.org/10.1016/j.jhin.2021.04.027>
- 478 7. Zhou Q, Gao Y, Wang X, Liu R, Du P, Wang X, et al. Nosocomial infections among
479 patients with COVID-19, SARS and MERS: a rapid review and meta-analysis. *Ann Transl*
480 *Med*. 2020;8(10):629–629.
- 481 8. PHE; LSHTM; The contribution of nosocomial infections to the first wave. Scientific
482 Advisory Group for Emergencies (SAGE) [Internet]. 2021 Feb 12; Available from:
483 [https://www.gov.uk/government/publications/phe-and-lshtm-the-contribution-of-nosocomial-](https://www.gov.uk/government/publications/phe-and-lshtm-the-contribution-of-nosocomial-infections-to-the-first-wave-28-january-2021)
484 [infections-to-the-first-wave-28-january-2021](https://www.gov.uk/government/publications/phe-and-lshtm-the-contribution-of-nosocomial-infections-to-the-first-wave-28-january-2021)
- 485 9. Ponsford MJ, Jefferies R, Davies C, Farewell D, Humphreys IR, Jolles S, et al. The
486 burden of nosocomial covid-19 in Wales: results from a multi-centre retrospective
487 observational study of 2508 hospitalized adults. *Thorax*. 2021 Jun 18;manuscript in press.
- 488 10. Lee J. Y, Kim H. A, Huh K, Hyun M, Rhee J. Y, Jang S, et al. Risk Factors for
489 Mortality and Respiratory Support in Elderly Patients Hospitalized with COVID-19 in Korea.
490 *J Korean Med Sci*. 2020;35(23):e223.

- 491 11. Elkrief A, Desilets A, Papneja N, Cvetkovic L, Groleau C, Lakehal Y. A, et al. High
492 mortality among hospital-acquired COVID-19 infection in patients with cancer: A
493 multicentre observational cohort study. *European Journal of Cancer*. 2020;139:181–7.
- 494 12. Carter B, Collins JT, Barlow-Pay F, Rickard F, Bruce E, Verduri A, et al. Nosocomial
495 COVID-19 infection: examining the risk of mortality. The COPE-Nosocomial Study
496 (COVID in Older PEople). *Journal of Hospital Infection*. 2020;106(2):376–84.
- 497 13. Khan KS, Reed-Embleton H, Lewis J, Saldanha J, Mahmud S. Does nosocomial
498 SARS-CoV-2 infection result in increased 30-day mortality? A multi-centre observational
499 study to identify risk factors for worse outcomes in COVID-19 disease. *J Hosp Infect*. 2020
500 Sep 17;107:91–4.
- 501 14. Richterman A, Meyerowitz E. A, Cevik M. Hospital-Acquired SARS-CoV-2
502 Infection: Lessons for Public Health. *JAMA - Journal of the American Medical Association*.
503 2020;324(21):2155–6.
- 504 15. Williamson EJ, Walker AJ, Bhaskaran K, Bacon S, Bates C, Morton CE, et al. Factors
505 associated with COVID-19-related death using OpenSAFELY. *Nature*. 2020 Aug
506 1;584(7821):430–6.
- 507 16. Shields AM, Burns SO, Savic S, Richter AG, Anantharachagan A, Arumugakani G, et
508 al. COVID-19 in patients with primary and secondary immunodeficiency: The United
509 Kingdom experience. *Journal of Allergy and Clinical Immunology*.
- 510 17. Khalid U, Ilham MA, Nagaraja P, Elker D, Asderakis A. SARS-CoV-2 in Kidney
511 Transplant and Waitlisted Patients During the First Peak: The Welsh Experience. *Transplant*
512 *Proc*. 2020/12/19 ed. 2021 May;53(4):1154–9.
- 513 18. Hewitt J, Carter B, Vilches-Moraga A, Quinn TJ, Braude P, Verduri A, et al. The
514 effect of frailty on survival in patients with COVID-19 (COPE): a multicentre, European,
515 observational cohort study. *The Lancet Public Health*. 2020;5(8):e444–51.
- 516 19. Richards SJG, D’Souza J, Pascoe R, Falloon M, Frizelle FA. Prevalence of frailty in a
517 tertiary hospital: A point prevalence observational study. *PLOS ONE*. 2019;14(7):e0219083–
518 e0219083.
- 519 20. Page MJ, Bossuyt PM, Boutron I, Hoffmann TC, Mulrow CD, Shamseer L, et al. The
520 PRISMA 2020 statement: an updated guideline for reporting systematic reviews. *BMJ*. 2021
521 Mar 29;372:n71.
- 522 21. Bandyopadhyay S, Baticulon RE, Kadhum M, Alser M, Ojuka DK, Badereddin Y, et
523 al. Infection and mortality of healthcare workers worldwide from COVID-19: a systematic
524 review. *BMJ Global Health*. 2020 Dec 1;5(12):e003097.
- 525 22. Abbas M, Robalo Nunes T, Martischang R, Zingg W, Iten A, Pittet D, et al.
526 Nosocomial transmission and outbreaks of coronavirus disease 2019: the need to protect both
527 patients and healthcare workers. *Antimicrobial Resistance and Infection Control*.
528 2021;10(1):7.
- 529 23. Ouzzani M, Hammady H, Fedorowicz Z, Elmagarmid A. Rayyan—a web and mobile
530 app for systematic reviews. *Systematic Reviews*. 2016 Dec 5;5(1):210.

- 531 24. Moola S, Munn Z, Tufanaru C, Aromataris E, Sears K. Chapter 7: Systematic reviews
532 of etiology and risk. In: Joanna Briggs Institute Reviewer's Manual.
533 <https://reviewersmanual.joannabriggs.org/>;
- 534 25. NICE. Appendix H: Appraisal checklists, evidence tables, GRADE and economic
535 profiles. In: Developing NICE guidelines: the manual. (Process and methods [PMG20]).
- 536 26. Langan D, Higgins JPT, Jackson D, Bowden J, Veroniki AA, Kontopantelis E, et al.
537 A comparison of heterogeneity variance estimators in simulated random-effects meta-
538 analyses. *Research synthesis methods*. 2019 Mar;10(1):83–98.
- 539 27. Perera R, Heneghan C. Interpreting meta-analysis in systematic reviews. *Evid Based*
540 *Med*. 2008 Jun 1;13(3):67.
- 541 28. Higgins JPT, Thomas J, Chandler J, Cumpston M, Li T, Page MJ WV. *Cochrane*
542 *Handbook for Systematic Reviews of Interventions*. Cochrane. 2021;version 6.
- 543 29. Higgins JPT, Thompson SG, Deeks JJ, Altman DG. Measuring inconsistency in meta-
544 analyses. *BMJ*. 2003 Sep 6;327(7414):557–60.
- 545 30. Guyatt GH, Oxman AD, Vist GE, Kunz R, Falck-Ytter Y, Alonso-Coello P, et al.
546 GRADE: an emerging consensus on rating quality of evidence and strength of
547 recommendations. *BMJ*. 2008;336(7650):924–6.
- 548 31. Vanhems P, Saadatian-Elahi M, Chuzeville M, Marion E, Favrelle L, Hilliquin D, et
549 al. Rapid nosocomial spread of SARS-CoV-2 in a French geriatric unit. *Infect Control Hosp*
550 *Epidemiol*. 2020;41(7):866–7.
- 551 32. Snell LB, Fisher CL, Taj U, Merrick B, Alcolea-Medina A, Charalampous T, et al.
552 Combined epidemiological and genomic analysis of nosocomial SARS-CoV-2 transmission
553 identifies community social distancing as the dominant intervention reducing outbreaks.
554 medRxiv. 2020;2020.11.17.20232827.
- 555 33. Coll E, Fernandez-Ruiz M, Sanchez-Alvarez J. E, Martinez-Fernandez J. R, Crespo
556 M, Gayoso J, et al. Covid-19 in transplant recipients: the spanish experience. *American*
557 *journal of transplantation*: official journal of the American Society of Transplantation and
558 the American Society of Transplant Surgeons. 2020;
- 559 34. Davis P, Gibson R, Wright E, Bryan A, Ingram J, Lee RP, et al. Atypical
560 presentations in the hospitalized older adult testing positive for SARS-CoV-2: a retrospective
561 observational study in Glasgow, Scotland. *Scott Med J*. 2020 Oct 11;36933020962891.
- 562 35. Garatti A, Castelvechio S, Daprati A, Molfetta R, Volpe M, De Vincentiis C, et al.
563 Clinical Course of COVID-19 Infection in Patients Urgently Operated of Cardiac Surgical
564 Procedures. *Annals of surgery*. 2020;272(4):e275–9.
- 565 36. Ajayi B, Trompeter A, Arnander M, Sedgwick P, Lui DF. 40 days and 40 nights:
566 Clinical characteristics of major trauma and orthopaedic injury comparing the incubation and
567 lockdown phases of COVID-19 infection. *Bone & joint open*. 2020;1(7):330–8.
- 568 37. Bhogal T, Khan U. T, Lee R, Stockdale A, Hesford C, Potti-Dhananjaya V, et al.
569 Haematological malignancy and nosocomial transmission are associated with an increased

- 570 risk of death from COVID-19: results of a multi-center UK cohort. *Leukemia and*
571 *Lymphoma*. 2021;
- 572 38. Brill SE, Jarvis HC, Ozcan E, Burns TLP, Warraich RA, Amani LJ, et al. COVID-19:
573 a retrospective cohort study with focus on the over-80s and hospital-onset disease. *BMC*
574 *Med*. 2020 Jun 25;18(1):194.
- 575 39. Gonfiotti A, Gatteschi L, Salvicchi A, Bongiolatti S, Lavorini F, Voltolini L. Clinical
576 courses and outcomes of five patients with primary lung cancer surgically treated while
577 affected by Severe acute respiratory syndrome coronavirus 2. *European journal of cardio-*
578 *thoracic surgery* □: official journal of the European Association for Cardio-thoracic Surgery.
579 2020;58(3):598–604.
- 580 40. Jewkes SV, Zhang Y, Nicholl DJ. Nosocomial spread of COVID-19: Lessons learned
581 from an audit on a stroke/neurology ward in a UK district general hospital. *Clinical Medicine,*
582 *Journal of the Royal College of Physicians of London*. 2020;20(5):E173–7.
- 583 41. Wake RM, Morgan M, Choi J, Winn S. Reducing nosocomial transmission of
584 COVID-19: implementation of a COVID-19 triage system. *Clin Med (Lond)*. 2020
585 Sep;20(5):e141–5.
- 586 42. Harada S, Uno S, Ando T, Iida M, Takano Y, Ishibashi Y, et al. Control of a
587 Nosocomial Outbreak of COVID-19 in a University Hospital. *Open Forum Infect Dis*. 2020
588 Dec;7(12):ofaa512.
- 589 43. Cao J, Tu W. -J, Cheng W, Yu L, Liu Y. -K, Hu X, et al. Clinical features and short-
590 term outcomes of 102 patients with coronavirus disease 2019 in Wuhan, China. *Clinical*
591 *Infectious Diseases*. 2020;71(15):748–55.
- 592 44. Khonyongwa K, Taori SK, Soares A, Desai N, Sudhanva M, Bernal W, et al.
593 Incidence and outcomes of healthcare-associated COVID-19 infections: significance of
594 delayed diagnosis and correlation with staff absence. *J Hosp Infect*. 2020 Dec;106(4):663–72.
- 595 45. Sanchez M. D, Sanchez M, De La Morena J. M, Ogaya-Pinies G, Mateo E,
596 Moscatiello P, et al. Nosocomial SARS-CoV-2 infection in urology departments: Results of a
597 prospective multicentric study. *International Journal of Urology*. 2021;28(1):62–7.
- 598 46. Lakhani K, Minguell J, Guerra-Farfan E, Lara Y, Jambrina U, Pijoan J, et al.
599 Nosocomial infection with SARS-CoV-2 and main outcomes after surgery within an
600 orthopaedic surgery department in a tertiary trauma centre in Spain. *International*
601 *Orthopaedics*. 2020;44(12):2505–13.
- 602 47. Pellaud C, Grandmaison G, Thien H. P.P.H, Baumberger M, Carrel G, Ksouri H, et al.
603 Characteristics, comorbidities, 30-day outcome and in-hospital mortality of patients
604 hospitalized with COVID-19 in a Swiss area - A retrospective cohort study. *Swiss Medical*
605 *Weekly*. 2020;150(29):w20314.
- 606 48. Barranco R, Du Tremoul LVB, Ventura FA. Hospital-acquired sars-cov-2 infections
607 in patients: Inevitable conditions or medical malpractice? *International Journal of*
608 *Environmental Research and Public Health*. 2021;18(2):1–9.

- 609 49. Liu H, Zhao J, Xing Y, Li M, Du M, Suo J, et al. Nosocomial Infection in Adult
610 Admissions with Hematological Malignancies Originating from Different Lineages: A
611 Prospective Observational Study. *PLOS ONE*. 2014 Nov 21;9(11):e113506.
- 612 50. Johns Hopkins Center for Systems Science and Engineering. The Johns Hopkins
613 Coronavirus Resource Center (CRC).
- 614 51. Rhee C, Baker M, Vaidya V, Tucker R, Resnick A, Morris CA, et al. Incidence of
615 Nosocomial COVID-19 in Patients Hospitalized at a Large US Academic Medical Center.
616 *JAMA Network Open*. 2020;3(9):e2020498.
- 617 52. Long D. R, O'Reilly-Shah V, Rustagi A. S, Bryson-Cahn C, Jerome K. R, Weiss N.
618 S, et al. Incidence of health care-associated COVID-19 during universal testing of medical
619 and surgical admissions in a large US health system. *Open Forum Infectious Diseases*.
620 2020;7(10).
- 621 53. Thompson JWJ, Mikolajewski AJ, Kissinger P, McCrossen P, Smither A, Chamarthi
622 GD, et al. An Epidemiologic Study of COVID-19 Patients in a State Psychiatric Hospital:
623 High Penetrance With Early CDC Guidelines. *Psychiatric services (Washington, DC)*.
624 2020;71(12):1285–7.
- 625 54. Nalleballe K, Siddamreddy S, Kovvuru S, Veerapaneni P, Roy B, Onteddu S. R. Risk
626 of COVID-19 from hospital admission during the pandemic. *Infect Control Hosp Epidemiol*.
627 2020;
- 628 55. Mani V. R, Kalabin A, Valdivieso S. C, Murray-Ramcharan M, Donaldson B. New
629 York inner city hospital COVID-19 experience and current data: Retrospective analysis at the
630 epicenter of the American coronavirus outbreak. *Journal of Medical Internet Research*.
631 2020;22(9):e20548.
- 632 56. Dowlati E, Zhou T, Sarpong K, Pivazyan G, Briscoe J, Fayed I, et al. Case Volumes
633 and Perioperative Coronavirus Disease 2019 Incidence in Neurosurgical Patients During a
634 Pandemic: Experiences at Two Tertiary Care Centers in Washington, DC. *World*
635 *Neurosurgery*. 2020 Nov;143:e550–60.
- 636 57. Hu P, Jansen J. O, Uhlich R, Black J, Pierce V, Hwang J, et al. Early comprehensive
637 testing for COVID-19 is essential to protect trauma centers. *Journal of Trauma and Acute*
638 *Care Surgery*. 2020;89(4):698–702.
- 639 58. Verity R, Okell LC, Dorigatti I, Winskill P, Whittaker C, Imai N, et al. Estimates of
640 the severity of coronavirus disease 2019: a model-based analysis. *The Lancet Infectious*
641 *Diseases*. 2020;20(6):669–77.
- 642 59. Bhaskaran K, Bacon S, Evans SJ, Bates CJ, Rentsch CT, MacKenna B, et al. Factors
643 associated with deaths due to COVID-19 versus other causes: population-based cohort
644 analysis of UK primary care data and linked national death registrations within the
645 OpenSAFELY platform. *The Lancet Regional Health – Europe [Internet]*. 2021 Jul 1 [cited
646 2021 Jun 24];6. Available from: <https://doi.org/10.1016/j.lanepe.2021.100109>
- 647 60. Salmon R. L, Monaghan S. P. AO - Salmon R.L, ORCID: <http://orcid.org/--->. Who is
648 dying from COVID-19 in the United Kingdom? A review of cremation authorisations from a
649 single South Wales' crematorium. *Epidemiology and Infection*. 2021;

- 650 61. Boyarsky BJ, Werbel WA, Avery RK, Tobian AAR, Massie AB, Segev DL, et al.
651 Antibody Response to 2-Dose SARS-CoV-2 mRNA Vaccine Series in Solid Organ
652 Transplant Recipients. *JAMA*. 2021 Jun 1;325(21):2204–6.
- 653 62. Parry HM, McIlroy G, Bruton R, Ali M, Stephens C, Damery S, et al. Antibody
654 Responses After First and Second COVID-19 Vaccination in Patients With Chronic
655 Lymphocytic Leukaemia. 2021; Available from:
656 <http://europepmc.org/abstract/PPR/PPR348446>
- 657 63. Wadei HM, Gonwa TA, Leoni JC, Shah SZ, Aslam N, Speicher LL. COVID-19
658 infection in solid organ transplant recipients after SARS-CoV-2 vaccination. *American*
659 *journal of transplantation*. 2021;
- 660 64. Kamar N, Abravanel F, Marion O, Couat C, Izopet J, Del Bello A. Three Doses of an
661 mRNA Covid-19 Vaccine in Solid-Organ Transplant Recipients. *N Engl J Med* [Internet].
662 2021 Jun 23 [cited 2021 Jun 25]; Available from: <https://doi.org/10.1056/NEJMc2108861>
- 663 65. Horby, W P, Mafham M, Peto L, Campbell M, Pessoa-Amorim G, et al. Casirivimab
664 and imdevimab in patients admitted to hospital with COVID-19 (RECOVERY): a
665 randomised, controlled, open-label, platform trial. *medRxiv* [Internet]. 2021; Available from:
666 <https://www.medrxiv.org/content/early/2021/06/16/2021.06.15.21258542>
- 667
- 668

669 **13 Tables and Figures accompanying main article**

670

671 **13.1 Table 1: Evidence Summary Table**

Reference	Study type	Country	Study population and setting	Study period [□]	Nosocomial case definition	Number of participants (%) [†] , *	Mortality (%) [†]	Critical care admission	Length of follow-up
Ajayi et al ³⁶	Retrospective cohort	UK	39 hospitalized adult trauma patients with RT-PCR diagnosis of COVID-19 admitted to London centre.	26/1/20 to 14/4/20 (80 days)	No explicit definition.	<u>Community:</u> 12 (30.8%) <u>Nosocomial:</u> 27 (69.2%)	<u>Community:</u> 1 (8.3%) <u>Nosocomial:</u> 7 (25.9%)	Not reported.	Until death or discharge.
Bhogal et al ³⁷	Retrospective cohort	UK	179 hospitalized adult cancer patients with RT-PCR diagnosis of COVID-19 across 6 hospitals in England.	1/3/20 to 10/6/20 (102 days)	“Probable”: 8-14 days. “Definite”: > 14 days following admission	<u>Community:</u> 145 (82.8%) <u>Nosocomial:</u> 28 (16.2%)	<u>Community:</u> 36 (24.8%) <u>Nosocomial:</u> 18 (64.3%)	Not reported.	Until discharge, death, or last available follow-up 17/6/20 (minimum 7 days; median 44).
Brill et al ³⁸	Retrospective cohort	UK	450 hospitalized adults with RT-PCR diagnosis of COVID-19 in London teaching hospital	10/3/20 to 8/4/20 (30 days)	RT-PCR diagnosis made >14 days following continuous admission.	<u>Community:</u> 419 (93.1%) <u>Nosocomial:</u> 31 (6.9%)	<u>Community:</u> 166 (39.6%) <u>Nosocomial:</u> 7 (22.6%)	Not reported.	Until death or discharge.
Cao et al ⁴³	Retrospective cohort	China	78 adults hospitalized with laboratory-confirmed COVID-19 in Wuhan (24 healthcare workers excluded)	3/1/20 to 1/2/20 (30 days)	Close contact with known positive case whilst admitted to hospital or outpatient visit in last 14 days	<u>Community:</u> 68 (87.2%) <u>Nosocomial:</u> 10 (12.8%)	<u>Community:</u> 15 (22.1%) <u>Nosocomial:</u> 2 (20.0%)	Not reported.	Until death or discharge, until 15/2/20 (minimum 14 days).

Carter et al ¹²	Prospective cohort	UK and Italy	1564 hospitalized adults with laboratory-confirmed COVID-19 across 10 UK and 1 Italian hospitals	27/2/20 to 28/4/20 (62 days)	“Definite”: > 14 days from admission to diagnosis.	<u>Community:</u> 1368 (87.5%) <u>Nosocomial:</u> 196 (12.5%)	<u>Community:</u> 372 (27.2%) <u>Nosocomial:</u> 53 (27.0%)	Not reported.	Until death or discharge (minimum 7 days).
Coll et al ³³	Retrospective case series	Spain	778 solid organ transplant and hematopoietic stem cell transplant recipients with clinical-laboratory COVID-19 diagnosis across 61 Spanish transplant centres.	20/2/20 to 13/7/20 (145 days)	No explicit definition given.	<u>Community:</u> 679 (87.3%) <u>Nosocomial:</u> 99 (12.7%)	<u>Community*:</u> 133 of 570 (23.3%) <u>Nosocomial*:</u> 37 of 77 (48.1%)	Not reported.	Not explicitly defined. *Outcome data available in 647 only.
Davis et al ³⁴	Retrospective cohort	UK	222 hospitalized adults with a RT-PCR confirmed diagnosis of COVID-19 within department of medicine for elderly across 3 Scottish (UK) hospitals	18/3/20 to 20/4/20 (34 days)	RT-PCR diagnosis made >14 days following admission.	<u>Community:</u> 119 (53.6%) <u>Nosocomial:</u> 103 (46.4%)	<u>Community:</u> 54 (45.4%) <u>Nosocomial:</u> 41 (39.8%)	<u>Community:</u> 0 (0.0 %) <u>Nosocomial:</u> 4 (3.9%)	30 day mortality following date of RT-PCR testing
Elkrief et al ¹¹	Prospective cohort	Canada	249 hospitalized adults with cancer and a laboratory-confirmed diagnosis of COVID-19 (3 children excluded)	3/3/20 to 23/5/20 (82 days)	Diagnosis of COVID-19 >6 days after unrelated admission.	<u>Community:</u> 202 (81.1%) <u>Nosocomial:</u> 47 (18.9%)	<u>Community:</u> 49 (24.3%) <u>Nosocomial:</u> 22 (46.8%)	<u>Community:</u> 27 (13.4%) <u>Nosocomial:</u> 6 (12.8%)	Until death or last follow-up (median 25 days).
Garatti et al ³⁵	Retrospective case series	Italy	10 hospitalized adults undergoing urgent cardiac surgery in Italian with a clinical	21/2/20 to 08/03/20	Clinical diagnosis made > 8 days	<u>Community:</u>	<u>Community:</u>	<u>Community:</u>	Until death or discharge (median 25 days post

			diagnosis of COVID-19	(17 days)	following admission.	4 (40%) <u>Nosocomial:</u> 6 (60%)	1 (25.0%) <u>Nosocomial:</u> 0 (0.0%)	1 (25.0%) <u>Nosocomial:</u> 0 (0.0%)	symptom onset).
Gonfiotti et al ³⁹	Retrospective case series	Italy	5 adult patients hospitalized in Italian thoracic surgery unit with a RT-PCR confirmed diagnosis of COVID-19.	29/1/20 to 4/3/20 (36 days)	Close contact with known positive case whilst in hospital (no explicit interval defined).	<u>Community:</u> 1 (20.0%) <u>Nosocomial:</u> 4 (80.0%)	<u>Community:</u> 0 (0.0%) <u>Nosocomial:</u> 2 (50.0%)	<u>Community:</u> 0 (0.0%) <u>Nosocomial:</u> 1 (25.0%)	Until death or discharge (21-60 days post surgery).
Harada et al ⁴²	Prospective cohort	Japan	562 patients tested prior or during hospitalization to Japanese university hospital following nosocomial outbreak.	24/3/20 to 24/4/20 (32 days)	Development of symptoms and RT-PCR test >5 days following admission.	<u>Community:</u> 19 (79.2%) <u>Nosocomial:</u> 5 (20.8%)	<u>Community:</u> 1 (5.3%) <u>Nosocomial:</u> 3 (60.0%)	<u>Community:</u> 4 (21.1%) <u>Nosocomial:</u> 1 (20.0%)	Not explicitly defined
Jewkes et al ⁴⁰	Retrospective case series	UK	133 adults admitted to an acute stroke unit within the UK with nosocomial COVID-19 outbreak.	12/3/20 to 5/5/20 (54 days)	Development of symptoms and RT-PCR test >14 days following admission.	<u>Community:</u> 13 (61.9%) <u>Nosocomial:</u> 8 (38.1%)	<u>Community:</u> 7 (53.8%) <u>Nosocomial:</u> 3 (37.5%)	Not reported.	Not explicitly defined
Khan et al ¹³	Prospective cohort	UK	173 adults hospitalized within 3 acute Scottish (UK) hospitals with an RT-PCR confirmed COVID-19 on 9/4/20.	9/4/20 to 9/5/20 (30 days)	RT-PCR diagnosis made >7 days following admission.	<u>Community:</u> 154 (89.0%) <u>Nosocomial:</u> 19 (11.0%)	<u>Community:</u> 28 (18.2%) <u>Nosocomial:</u> 4 (21.1%)	<u>Community:</u> 46 (29.9%) <u>Nosocomial:</u> 2 (10.5%)	30 day outcomes from admission or diagnosis, censored at discharge.

Khonyongwa et al ⁴⁴	Retrospective cohort (prevalence)	UK	856 adults hospitalized for at least an overnight stay with RT-PCR confirmed COVID-19 within a London (UK) hospital, and no recent admission.	1/3/20 to 18/4/20 (48 days)	Development of symptoms and RT-PCR test >14 days following admission for non-COVID-19 indication.	<u>Community:</u> 716 (92.5%) <u>Nosocomial:</u> 58 (7.5%)	<u>Community:</u> 187 (26.1%) <u>Nosocomial:</u> 15 (25.9%)	<u>Community:</u> 232 (32.4%) <u>Nosocomial:</u> 13 (22.4%)	30 day outcomes
Lakhani et al ⁴⁶	Retrospective case series (prevalence)	Spain	288 hospitalized adult trauma patients with RT-PCR confirmed COVID-19 admitted to Spanish (UK) centre.	9/3/20 to 4/5/20 (57 days)	Development of symptoms and RT-PCR test >4 days following admission and <14 days of discharge for non-COVID-19 indication.	<u>Community:</u> 10 (34.5%) <u>Nosocomial:</u> 19 (65.5%)	<u>Community:</u> 5 (50.0%) <u>Nosocomial:</u> 7 (36.8%)	Not reported.	Minimum 14-days after discharge
Lee et al ¹⁰	Retrospective cohort.	Spain	98 adults aged ≥ 65 years hospitalized with RT-PCR confirmed COVID-19 to 4 Korean hospitals.	18/2/20 to 4/3/20 (16 days)	Diagnosis of COVID-19 during admission for unrelated illness.	<u>Community:</u> 86 (87.8%) <u>Nosocomial:</u> 12 (12.2%)	<u>Community:</u> 13 (15.1%) <u>Nosocomial:</u> 7 (58.3%)	<u>Community:</u> 14 (16.3%) <u>Nosocomial:</u> 2 (16.7%)	Death or discharge (minimum 14-days following admission)
Pellaud et al ^{47, ±}	Retrospective cohort	Switzerland	196 patients hospitalized with laboratory confirmed COVID-19 across 5 hospitals within Fribourg region.	1/3/20 to 12/4/20 (43 days)	No explicit definition reported.	<u>Community:</u> 183 (93.4%) <u>Nosocomial:</u> 13 (6.6%)	<u>Not reported</u>	<u>Community:</u> 49 (26.8%) <u>Nosocomial:</u> 0 (0%)	30 days after onset of symptoms
Ponsford et al ⁹	Retrospective cohort	UK	2508 hospitalized adults with RT-PCR diagnosis of COVID-19 across 18 hospitals in Wales	1/3/20 to 1/6/20	“Probable”: > 7 days “Definite”: > 14 days from admission to	<u>Community:</u> 1784	<u>Community:</u> 585 (32.8%) <u>Nosocomial:</u>	Not reported.	Until death or discharge, until 20/11/20 (minimum

			(UK)	(123 days)	diagnosis (multiple considered)	(71.1%) <u>Nosocomial:</u> 724 (28.9%)	300 (41.4%)		follow-up 142 days).
Sanchez et al ⁴⁵	Prospective cohort (prevalence)	Spain	143 adults admitted for urological surgery within 2 Spanish hospitals.	9/3/20 to 3/5/20 (56 days)	Development of symptoms ≥ 3 days of surgery and within 14 days of discharge.	<u>Community:</u> 2 (40.0%) <u>Nosocomial:</u> 3 (60.0%)	<u>Community:</u> 1 (50.0%) <u>Nosocomial:</u> 0 (0.0%)	<u>Community:</u> 1 (50.0%) <u>Nosocomial:</u> 0 (0.0%)	14-days following hospital discharge.
Snell et al ³²	Prospective cohort	UK	574 consecutive adults hospitalized with RT-PCR confirmed COVID-19 to single London (UK) hospital.	13/3/20 to 31/3/20 (19 days)	“Probable”: > 7 days “Definite”: > 14 days from admission to diagnosis; additional viral genomic and epidemiological analysis.	<u>Community:</u> 462 (83.7%) <u>Nosocomial:</u> 90 (16.3%)	<u>Community:</u> 78 (16.9%) <u>Nosocomial:</u> 32 (35.6%)	Not reported.	Death or discharge (duration unclear).
Vanhems et al ³¹	Retrospective case series	France	7 adults hospitalized with RT-PCR confirmed COVID-19 to 24-bed geriatric ward within Lyon region.	29/2/20 to 14/3/20 (15 days)	No explicit definition reported.	<u>Community:</u> 2 (28.6%) <u>Nosocomial:</u> 5 (71.4%)	<u>Community:</u> 1 (50.0%) <u>Nosocomial:</u> 1 (20.0%)	<u>Community:</u> 0 (0.0%) <u>Nosocomial:</u> 0 (0.0%)	Death or discharge (including transfer to other hospitals)
Wake et al ⁴¹	Prospective cohort (prevalence)	UK	662 adults hospitalized with RT-PCR confirmed COVID-19 to London hospital trust.	11/3/20 to 12/5/20 (63 days)	“Probable”: > 7 days “Definite”: > 14 days from admission to diagnosis	<u>Community:</u> 573 (92.7%) <u>Nosocomial:</u> 45 (7.3%)	<u>Community:</u> 208 (36.3%) <u>Nosocomial:</u> 14 (31.1%)	<u>Community:</u> Not reported <u>Nosocomial:</u> 2 (4.4%)	Unclear (median length of stay stated as 33 days, IQR 22-55).

672

673 □ Assumed to include end date unless otherwise specified by authors

674 † In event of multiple case definitions for nosocomial infection, “probable” and “definite” case are both included.

675 * Healthcare workers and children were excluded wherever reported separately to patients (age \geq 16 years).

676 = Data only included within secondary meta-analysis.

Nosocomial infection and mortality: a systematic review and meta-analysis

Lakhani et al	1	1	1	1	1	1	1	1	1	1	8
---------------	---	---	---	---	---	---	---	---	---	---	----------

680

681 13.4 Table 4: Risk of bias assessment - case series (n=5)

Study	Domain 1*	Domain 2*	Domain 3	Domain 4*	Domain 5	Domain 6	Domain 7	Domain 8*	Domain 9*	Domain 10	Total Score
Vanhems et al	1	0	0	0	0	1	1	1	0	0	4
Snell et al	1	1	1	1	0	0	0	1	1	0	6
Coll et al	1	0	1	0	0	1	1	0	1	1	6
Gonfiotti et al	0	1	1	1	0	1	1	1	1	0	7
Garatti et al	1	0	0	1	1	1	1	1	1	1	8

682

683

Nosocomial infection and mortality: a systematic review and meta-analysis

684 **Table 5:** Rates of mortality reporting in nosocomial COVID-19 outbreaks, by country of origin

Country	Nosocomial outbreak reported		Nosocomial mortality reported as an outcome*	
	Total studies, n	Total of studies (%)	Included studies, n	Fraction of countries' total reports
United Kingdom, UK	21	31%	15	71%
United States, US	7	10%	0	0%
China	6	9%	4	67%
Spain	5	7%	3	60%
France	3	4%	2	67%
Belgium	3	4%	0	0%
Italy	3	4%	2	67%
Switzerland	3	4%	1	33%
South Korea	2	3%	1	50%
Brazil	2	3%	2	100%
Japan	2	3%	2	100%
Vietnam	2	3%	0	0%
Germany	2	3%	1	50%
International	1	1%	1	100%
Poland	1	1%	1	100%
Denmark	1	1%	0	0%
India	1	1%	1	100%
Canada	1	1%	1	100%
Ireland	1	1%	1	100%
Total	67	-	38	57%

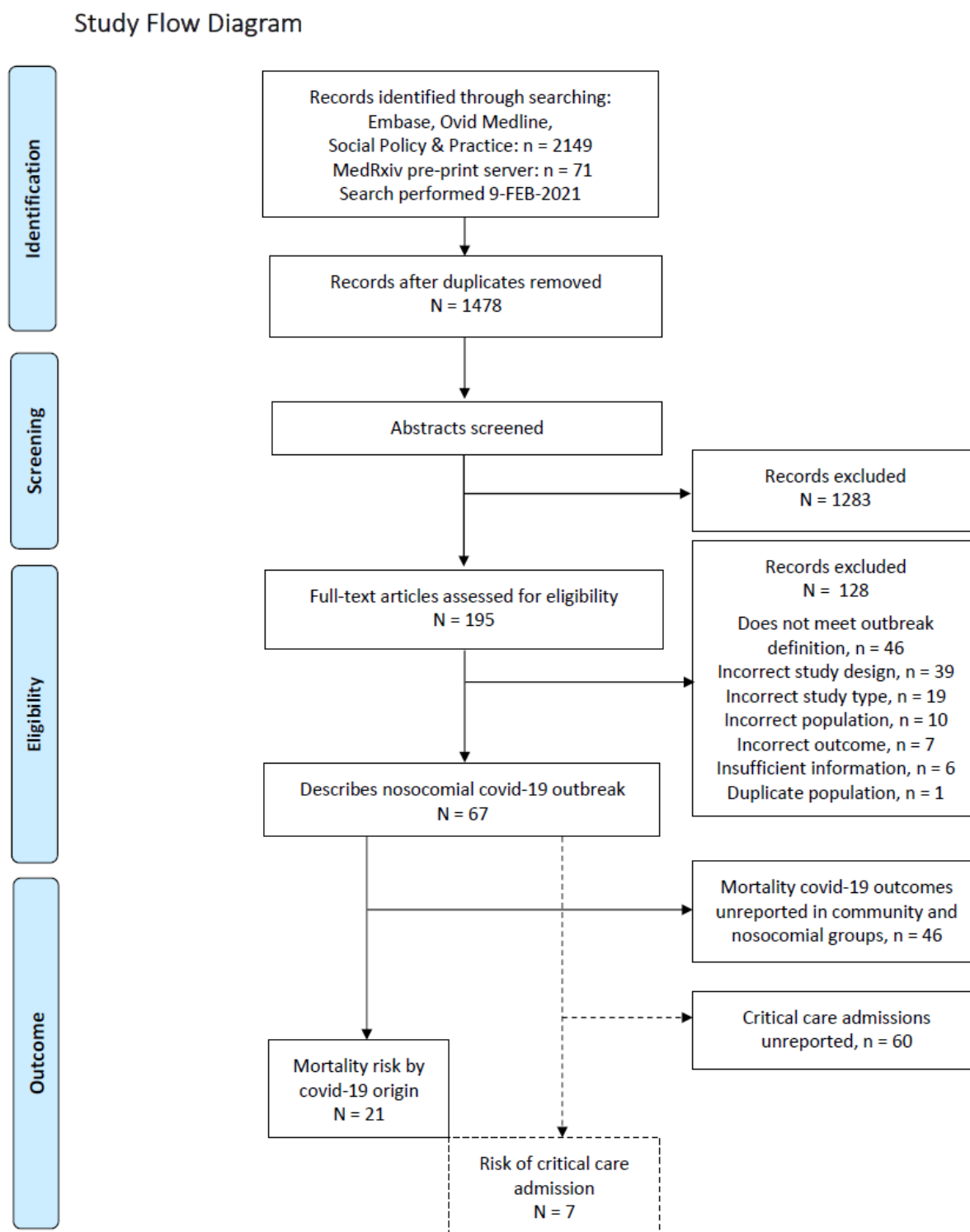
685

687 **13.5 Table 6: Grading of Recommendations, Assessment, Development and Evaluations (GRADE) assessment**

Statement	Number of studies and patients	Risk of bias	Indirectness	Inconsistency	Imprecision	Other considerations	Effect size	Overall quality of evidence
“In the general adult population, nosocomial COVID-19 is associated with a greater risk of inpatient mortality compared to individuals hospitalised with community-acquired COVID-19”	21 studies, 8246 patients. Probable nosocomial: 1517 Probable community: 6729	Serious - Very serious	Not serious	Very serious	Not serious	Publication bias suspected ²	RR 1.31 95% CI: 1.01 to 1.70	Low/ very low
“In an immunosuppressed adult population, nosocomial COVID-19 is associated with a greater risk of inpatient mortality compared to individuals hospitalised with community-acquired COVID-19”	3 studies, 1069 patients. Probable nosocomial: 152 Probable community: 917	Serious*	Not serious	Not serious	Serious ¹	Publication bias suspected ² Strong association ³	RR 2.14 95% CI: 1.76 to 2.61	Low/ Moderate

688 Created using GRADEPro online tool, <https://gradepro.org/>. * All studies scored moderate/high in formal assessment, however follow-up
689 duration was limited; ¹ Significant uncertainty associated with heterogeneity assessment: $I^2 = 0.00\%$, 95% CI: 0.00 to 96.6%, downgrade by
690 1 level; ² Mortality reporting bias suspected by country, downgrade by 1 level; ³ RR > 2.0 with consistent effect from ≥ 2 studies, upgrade by
691 1 level.

692 **13.6 Figure 1: PRISMA Study Flow Diagram**

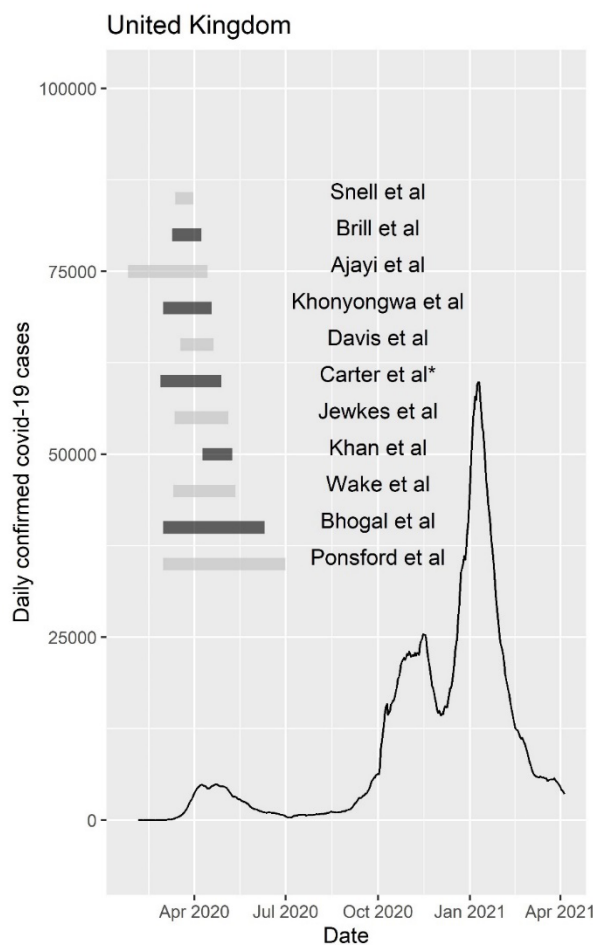


Nosocomial infection and mortality: a systematic review and meta-analysis

694 13.7 Figure 2: Timing of UK studies relative to national COVID-19 rates

695 *Plot showing the timing of individual studies included within the primary meta-analysis reporting*
696 *patients within the United Kingdom (UK), relative to national daily COVID-19 case diagnosis rates*
697 *January 2020 and April 2021. * The study by Carter et al is included here as 10/11 hospital sites were*
698 *within the UK.*

699

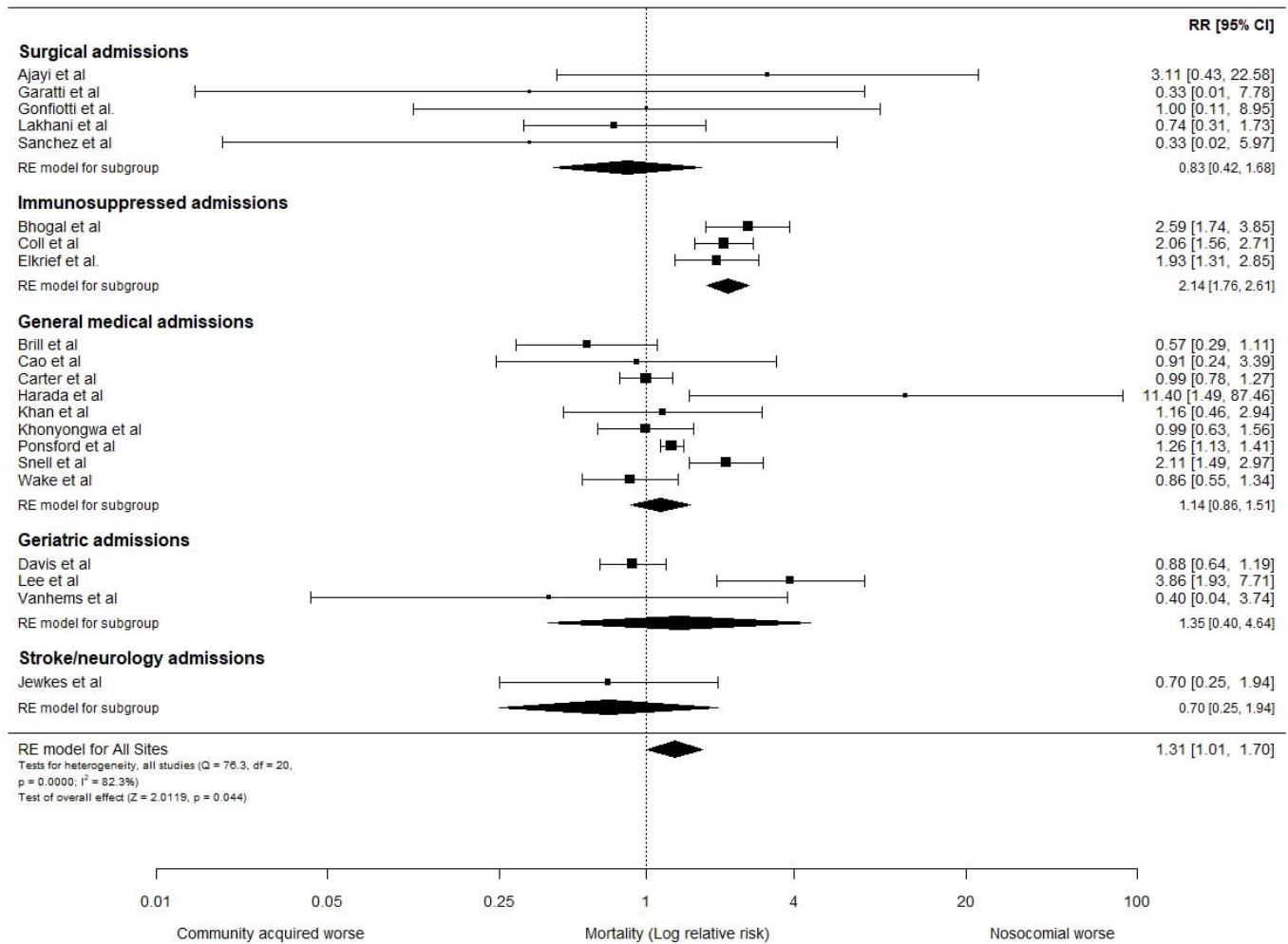


700

701

Nosocomial infection and mortality: a systematic review and meta-analysis

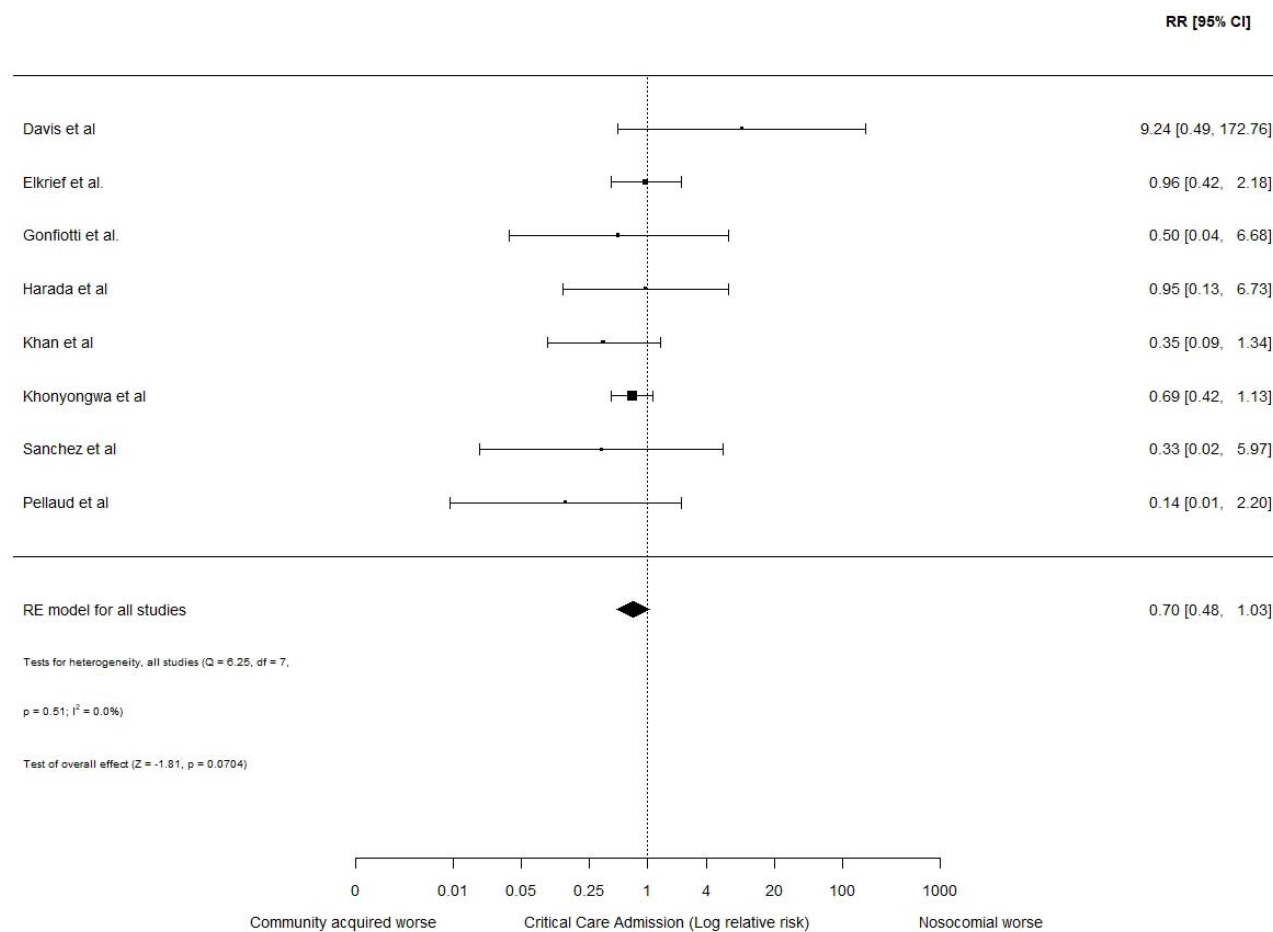
702 **13.8 Figure 3: Relative risk of mortality in hospitalized adults with nosocomial and community-**
 703 **acquired COVID-19**



704
 705 Forest plot assessing the relative risk (RR) and 95% confidence interval (95% CI) of mortality in adults
 706 hospitalized with community-acquired and probable nosocomial COVID-19, according to the study
 707 definitions. The size of each box is proportional to the size of the individual hospital site (A-N), with
 708 the error bars representing the 95% CIs. The diamond represents the pooled average across studies,
 709 based on a random effects (RE) model. I^2 : heterogeneity variance, calculated using restricted effects
 710 maximum likelihood (REML).
 711

Nosocomial infection and mortality: a systematic review and meta-analysis

712 13.9 Figure 4: Relative risk of critical care admission in hospitalized adults with nosocomial and 713 community-acquired COVID-19



714

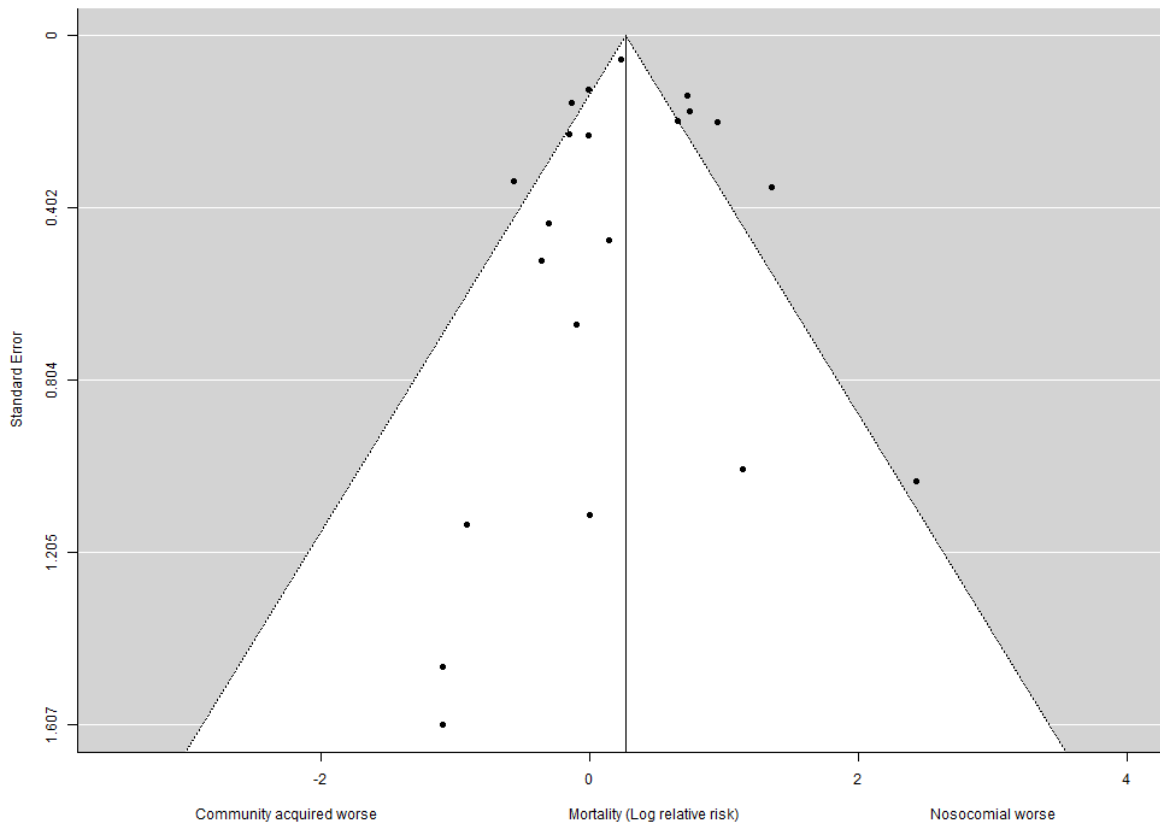
715

716 Forest plot assessing the relative risk (RR) and 95% confidence interval (95% CI) of critical care
717 admission in adults hospitalized with community-acquired and probable nosocomial COVID-19. The
718 size of each box is proportional to the size of the individual hospital site (A-N), with the error bars
719 representing the 95% CIs. The diamond represents the pooled average across studies, based on a
720 random effects (RE) model. I^2 : heterogeneity variance, calculated using restricted effects maximum
721 likelihood (REML).

722

Nosocomial infection and mortality: a systematic review and meta-analysis

723 13.10 Figure 5: Funnel plot



724

725 Funnel plot with pseudo 95% confidence limits showing the distribution of relative risk of mortality
726 across individual studies. Egger's test, $p=0.51$.

727