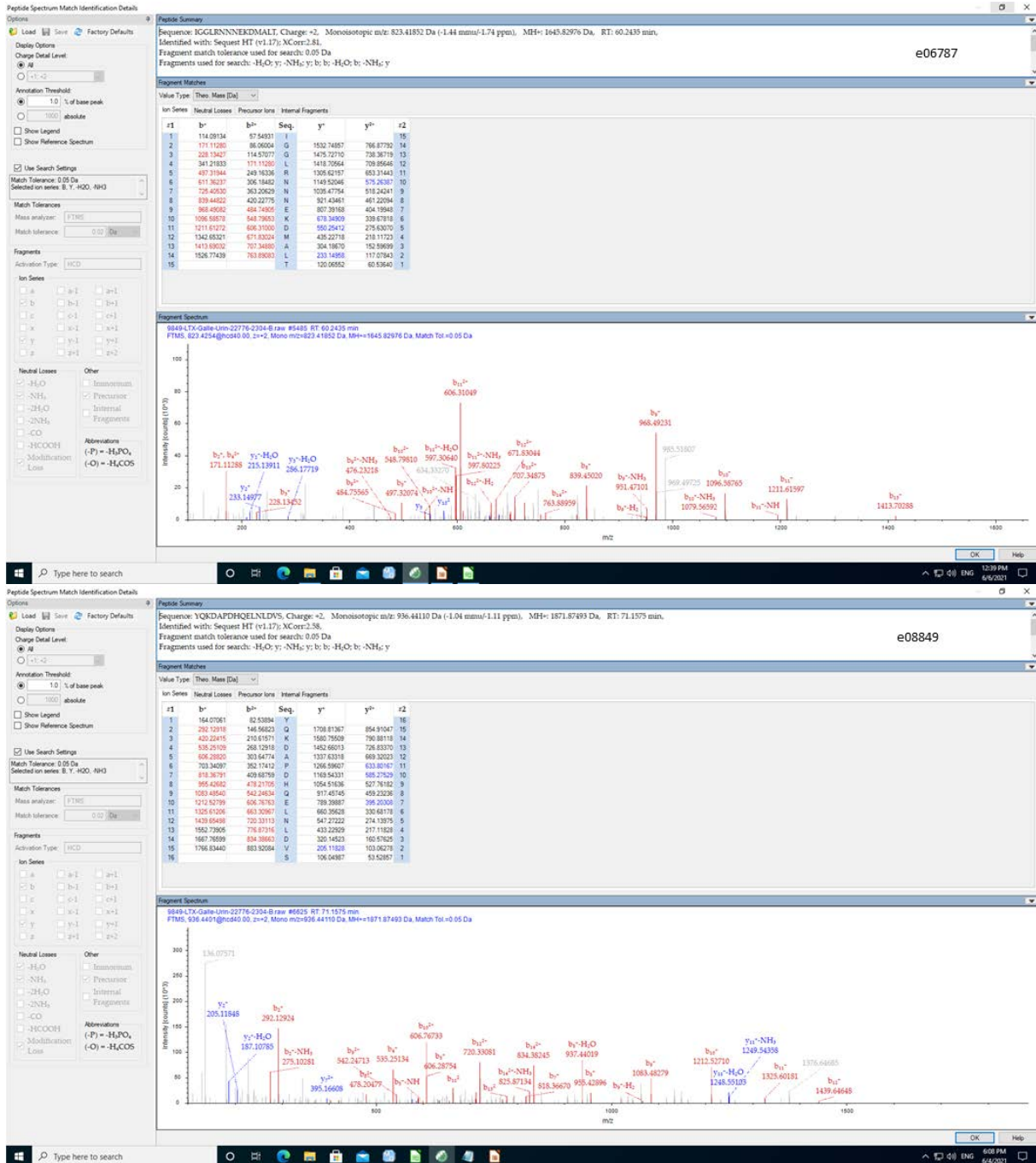
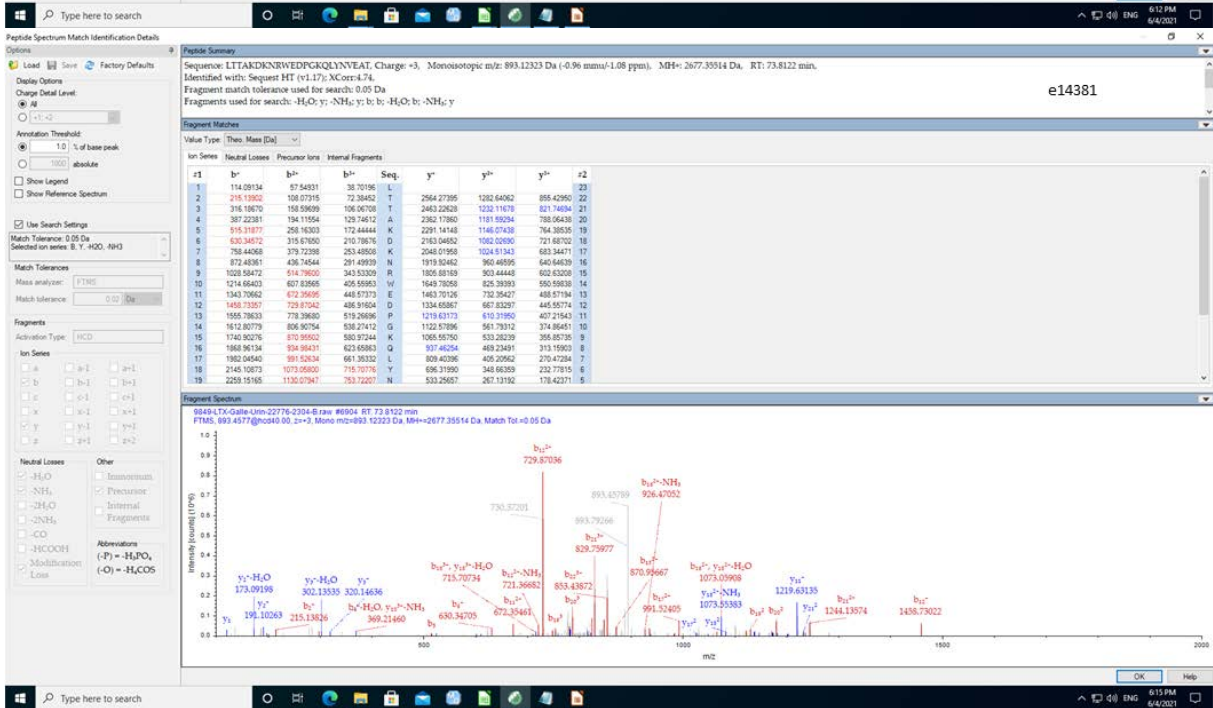
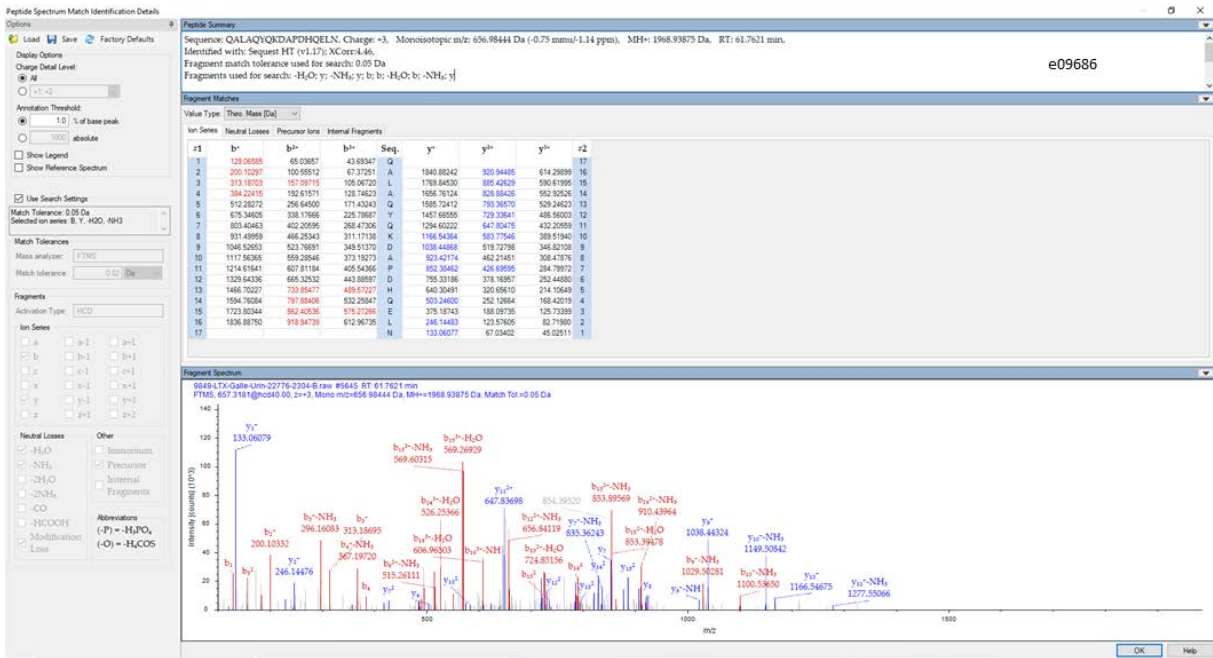


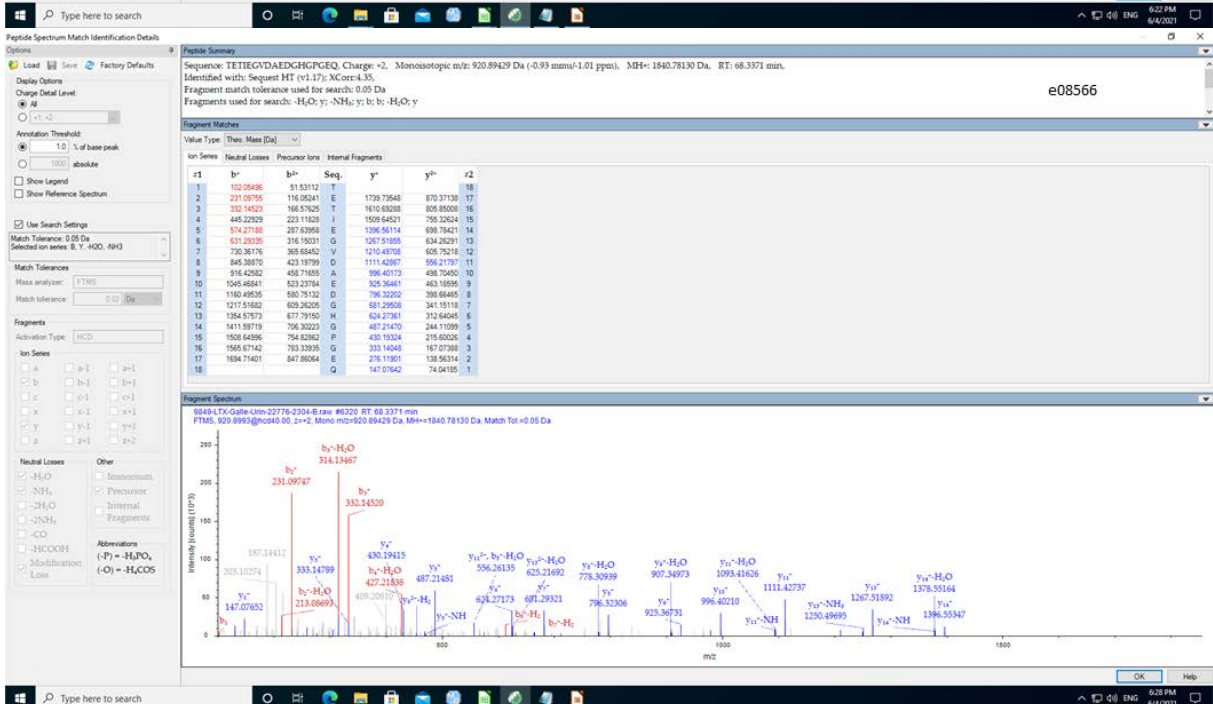
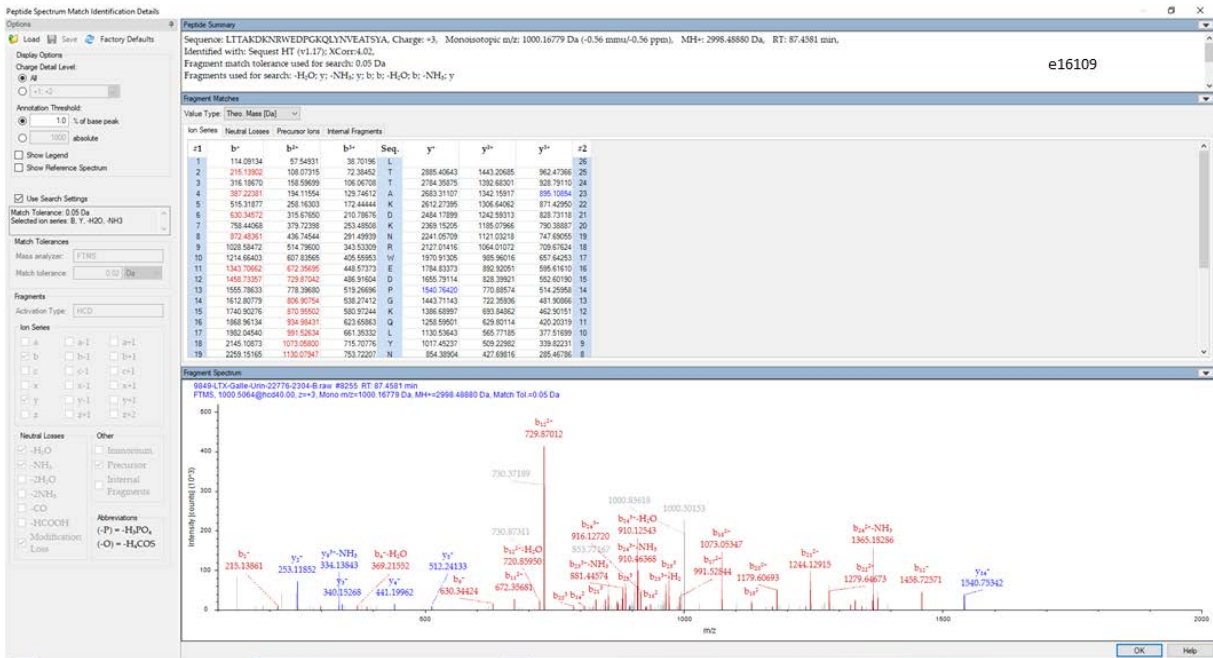
e-Supplement to

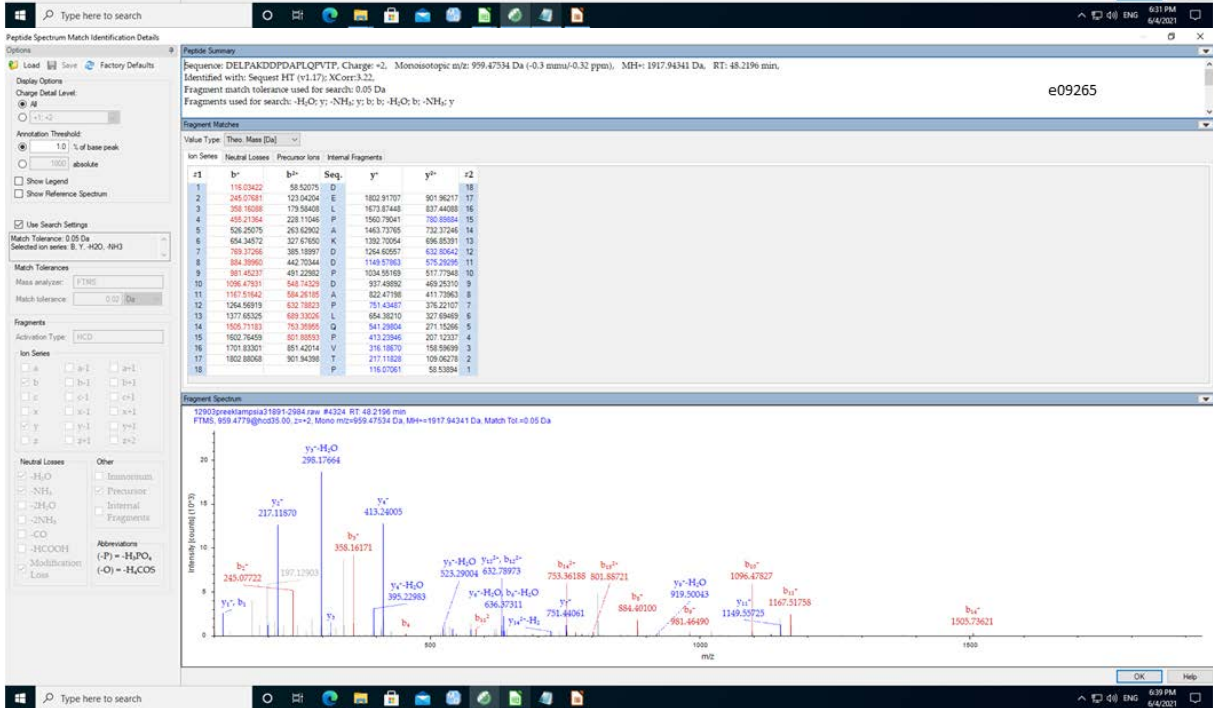
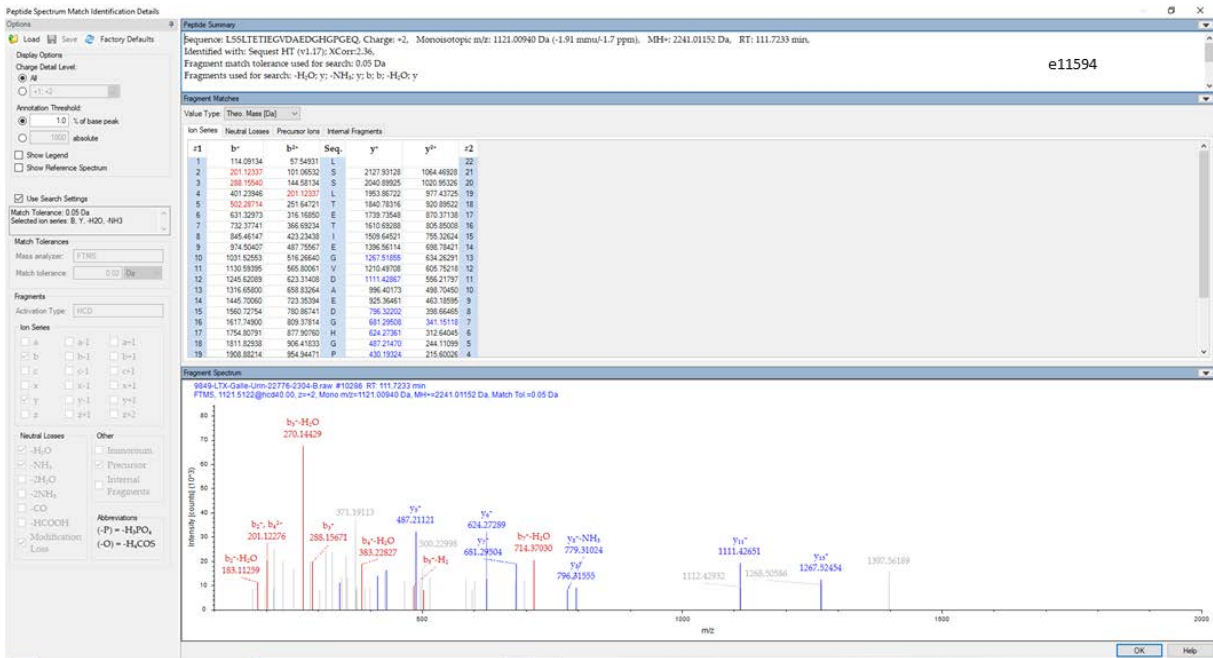
Differential excretion of urinary complement fragments in kidney diseases: a potential link to complement activation?

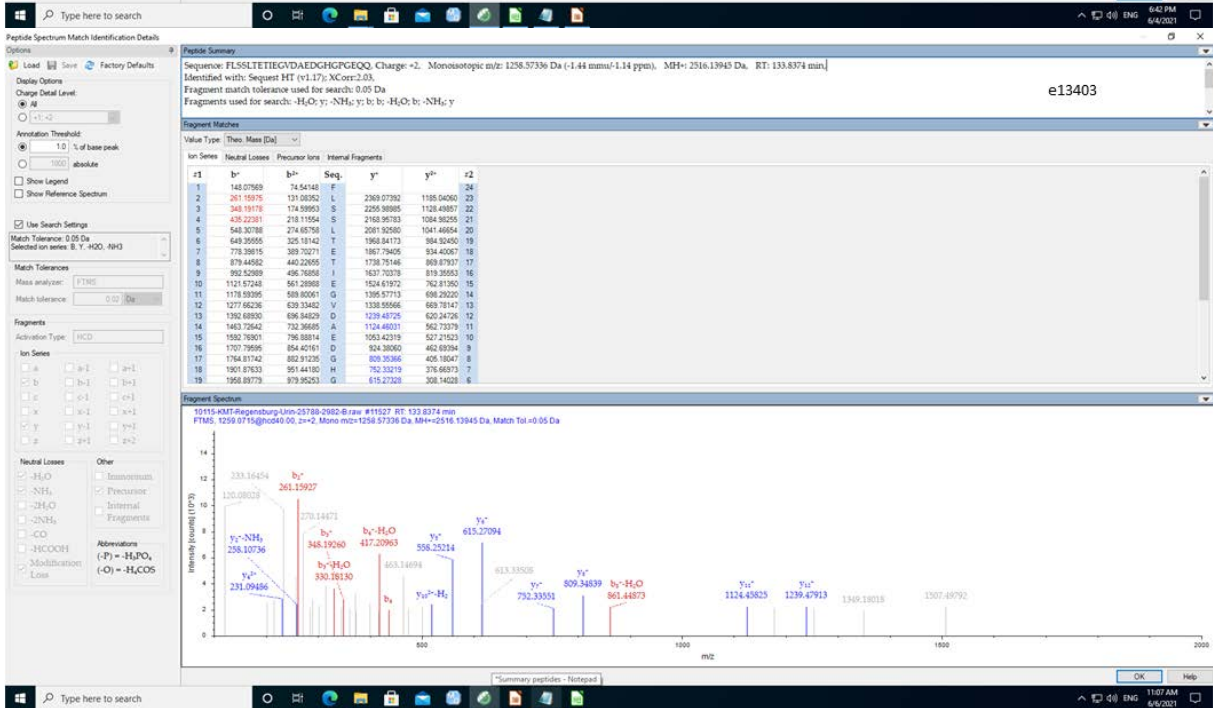
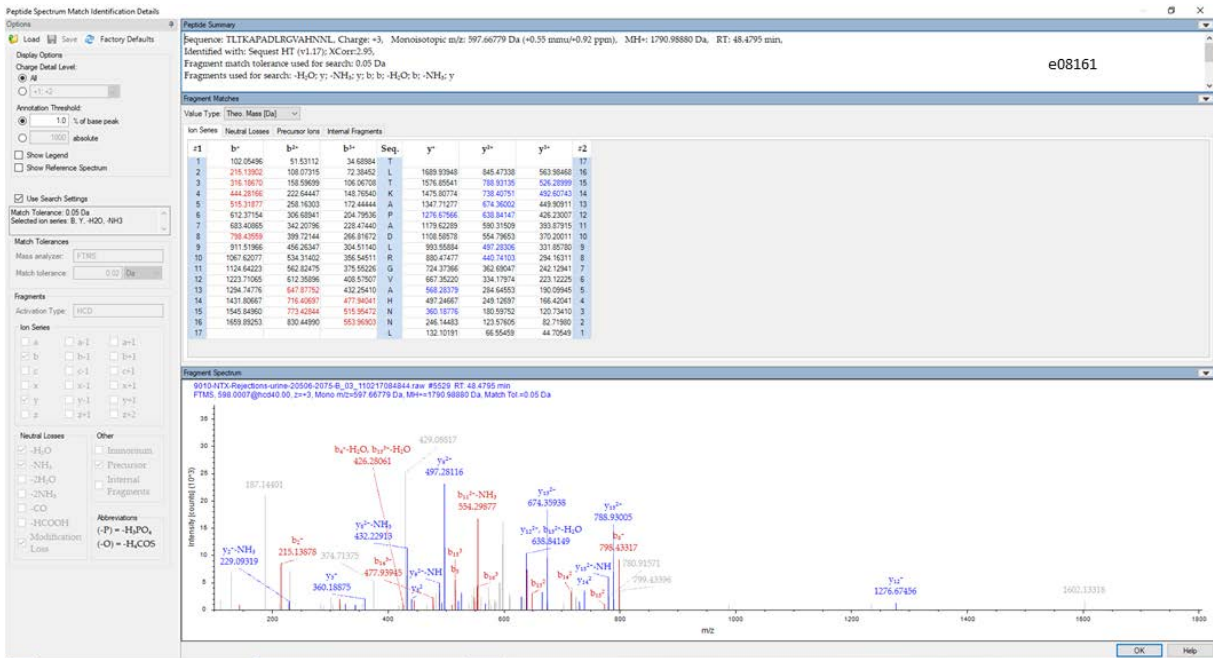
Supplementary Figure 1 (part 1-23)

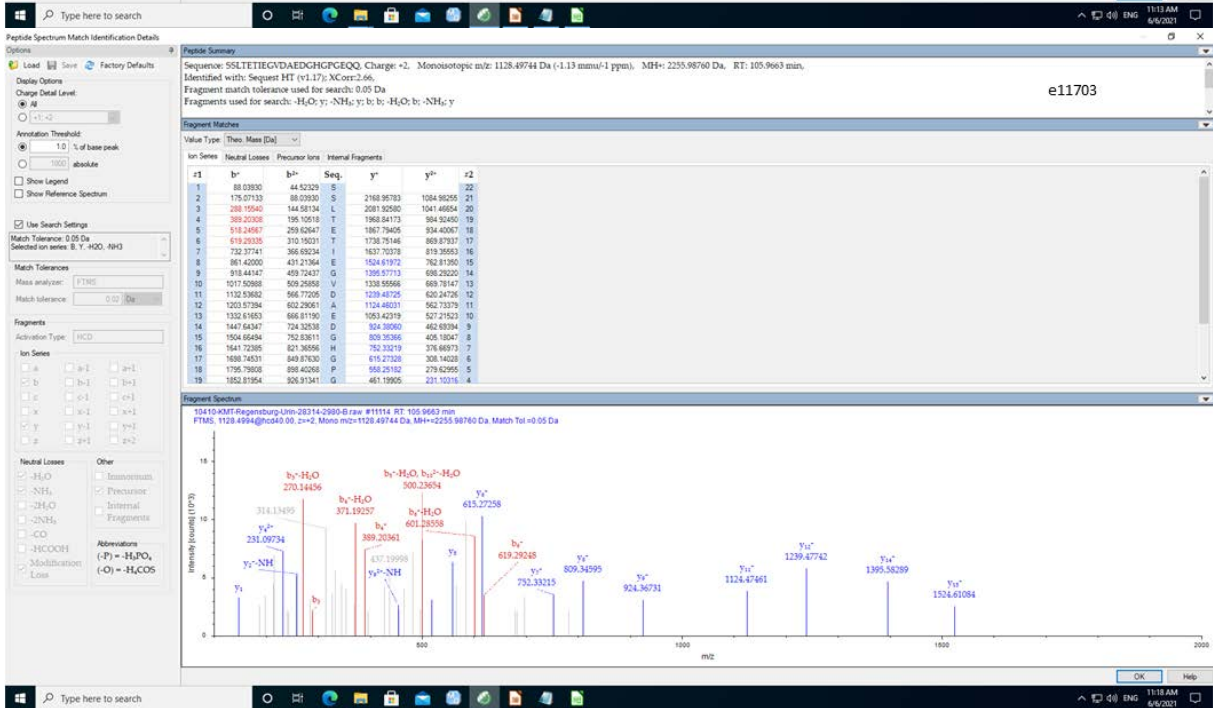
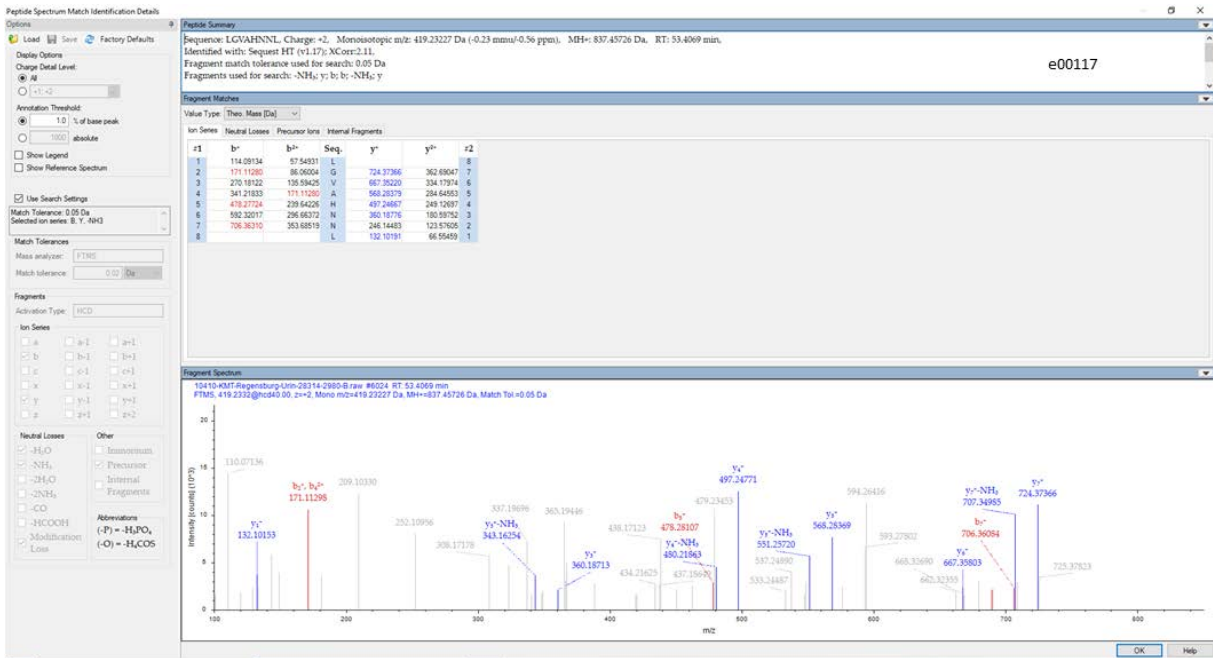












Peptide Spectrum Match Identification Details

Options: Load Save Factory Defaults

Display Options: Charge Detail Level: All

Annotation Threshold: 1.0 % of base peak

Match Tolerances: Match Tolerance: 0.05 Da

Mass analysis: FTMS

Match tolerance: 0.02 Da

Fragmentation: Activation Type: HCD

Ion Series: a, b, c, x, y, z

Neutral Losses: H₂O, NH₃, 2H₂O, 2NH₃, CO, HCOOH, Methylation, Loss

Other: Incomplete, Precursor, Internal, Fragments, Abbreviations: (P) = H₂PO, (-O) = H₂CO

Peptide Summary

Sequence: **LSLLETEICVDAEDHGPGEOQ**, Charge: +3, Monoisotopic m/z: 790.36224 Da (-0.58 mmu/-0.73 ppm), MH+: 2369.07218 Da, RT: 114.8764 min.

Identified with: **Sequest HT (v1.17); XCorr: 4.38**

Fragment match tolerance used for search: 0.05 Da

Fragments used for search: -H₂O; y; -NH₂; y; b; b; -H₂O; b; -NH₂; y

Fragment Matches

Ion Series	Neutral Losses	Precursor Ions	Internal Fragments
#1	b ⁺	b ²⁺	Seq.
1	114.09134	57.54931	38.70196 L
2	201.12337	101.06532	67.71264 S
3	288.15540	144.58134	96.72332 S
4	401.23948	201.12337	134.41800 L
5	502.28714	251.64721	168.10556 T
6	631.33070	315.66585	211.11476 E
7	732.37141	366.69234	244.79732 T
8	845.46147	423.23438	282.49201 I
9	974.50407	487.75919	326.56521 E
10	1091.52953	546.26640	344.51336 G
11	1130.59395	565.80061	377.53817 V
12	1248.62000	623.31409	416.67648 D
13	1316.65800	658.82644	439.55762 A
14	1445.70060	723.35394	482.57172 E
15	1560.71754	780.36141	526.31420 D
16	1617.74900	809.37814	539.92119 G
17	1754.80791	877.90760	585.60749 H
18	1811.83330	906.41633	604.61644 G
19	1908.88214	954.94471	636.95556 P

Fragment Spectrum

10410-KMT-Regensburg-Um-28314-2590-0 raw #11907 RT: 114.8764 min

FTMS, 790.8917@ms04.00, z=+3, Mono m/z=790.36224 Da, MH+=2369.07218 Da, Match Tol=0.05 Da

Peptide Spectrum Match Identification Details

Options: Load Save Factory Defaults

Display Options: Charge Detail Level: All

Annotation Threshold: 1.0 % of base peak

Match Tolerances: Match Tolerance: 0.05 Da

Mass analysis: FTMS

Match tolerance: 0.02 Da

Fragmentation: Activation Type: HCD

Ion Series: a, b, c, x, y, z

Neutral Losses: H₂O, NH₃, 2H₂O, 2NH₃, CO, HCOOH, Methylation, Loss

Other: Incomplete, Precursor, Internal, Fragments, Abbreviations: (P) = H₂PO, (-O) = H₂CO

Peptide Summary

Sequence: **EGVQKEDIPADLSQVQV**, Charge: +2, Monoisotopic m/z: 968.97766 Da (-0.89 mmu/-0.92 ppm), MH+: 1936.94805 Da, RT: 26.8642 min.

Identified with: **Sequest HT (v1.17); XCorr: 2.81**

Fragment match tolerance used for search: 0.05 Da

Fragments used for search: -H₂O; y; -NH₂; y; b; b; -H₂O; b; -NH₂; y

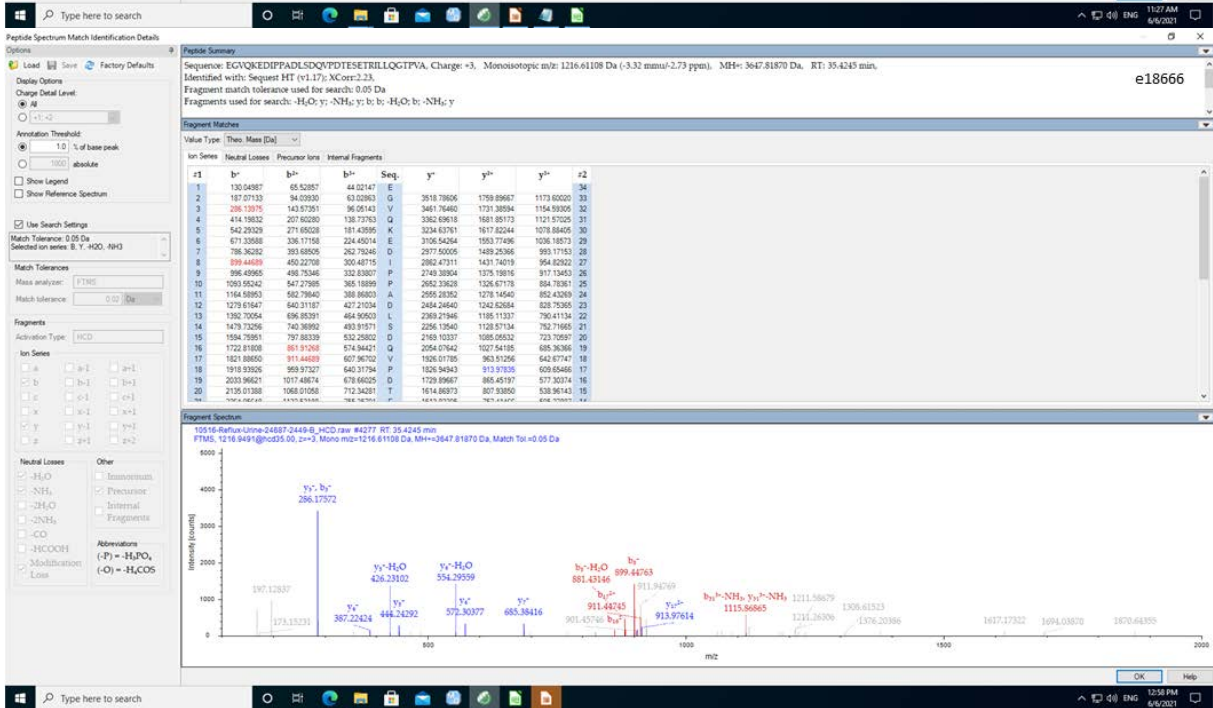
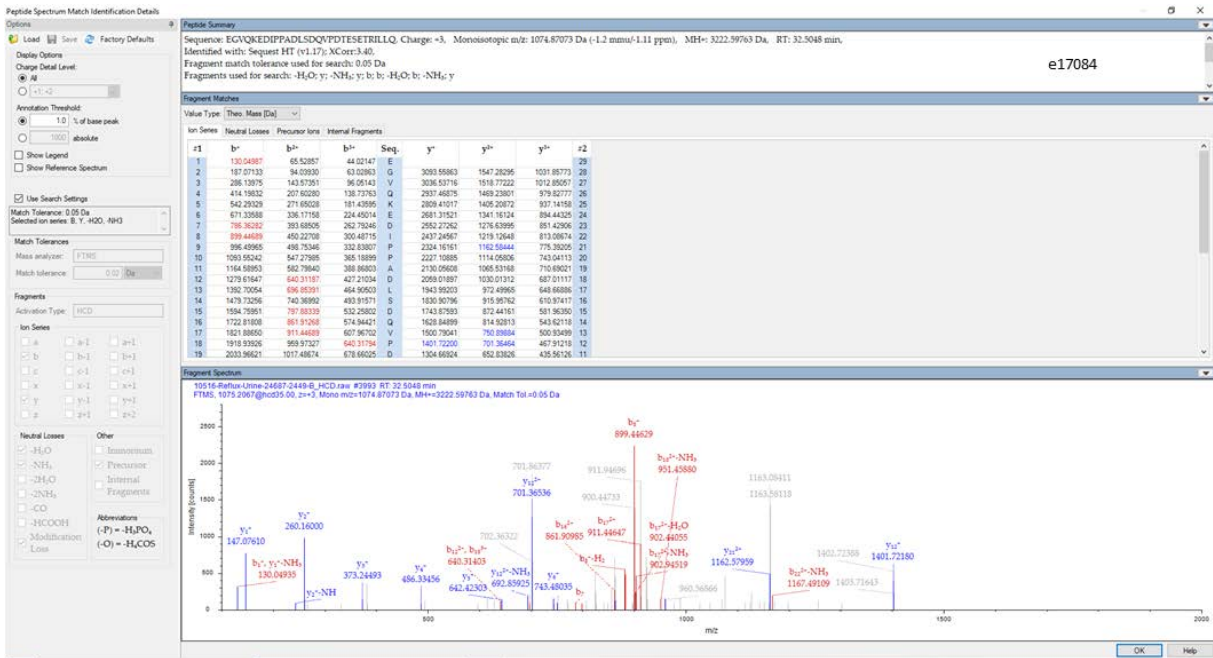
Fragment Matches

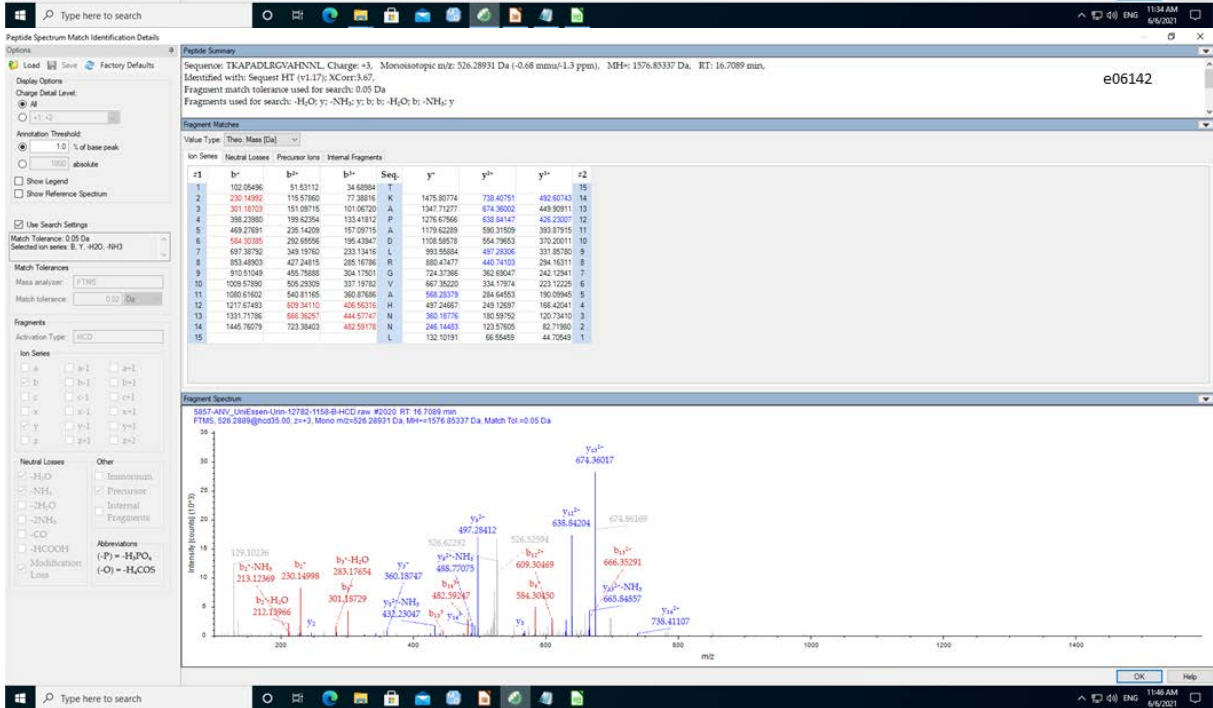
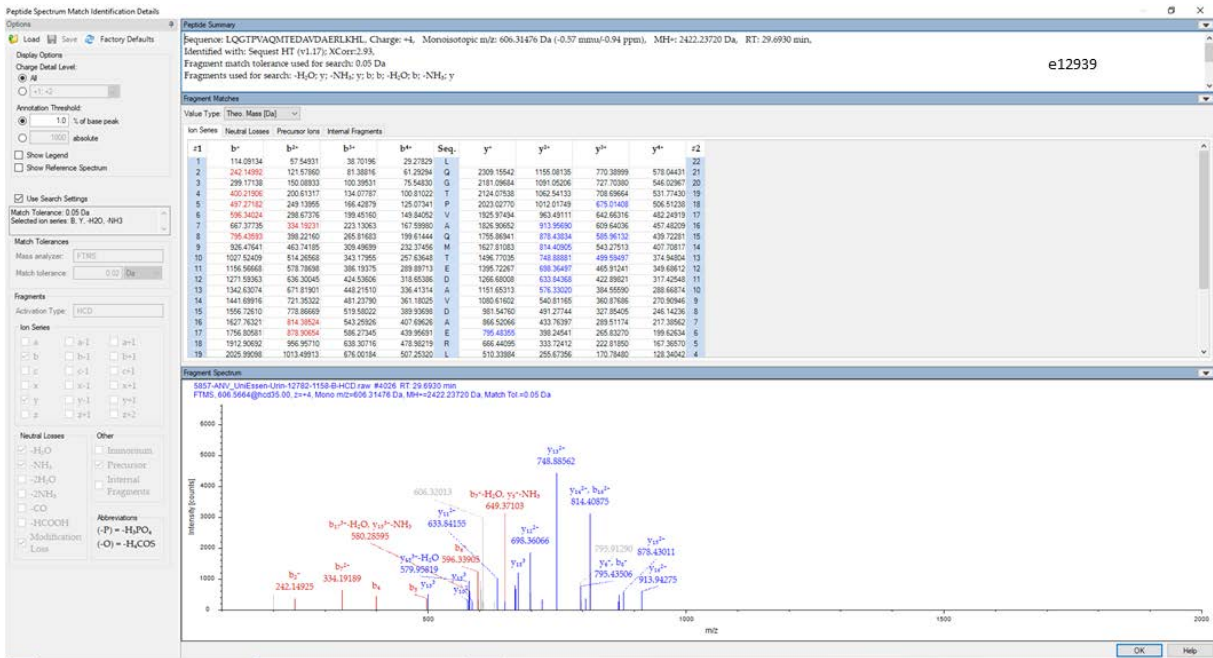
Ion Series	Neutral Losses	Precursor Ions	Internal Fragments
#1	b ⁺	b ²⁺	Seq.
1	130.04887	65.02885	E
2	187.07133	94.03930	G
3	286.13976	143.07591	V
4	414.18822	207.09200	Q
5	542.23220	271.06038	K
6	671.33588	336.17158	E
7	785.36262	393.68026	D
8	899.44839	452.22708	I
9	996.49968	498.75346	P
10	1093.55242	547.27995	P
11	1184.60951	593.79840	A
12	1279.61647	640.31187	D
13	1392.70064	696.35991	L
14	1479.73266	740.36992	S
15	1584.78951	797.88333	D
16	1722.81808	861.91268	Q
17	1821.88650	913.44689	V
18			

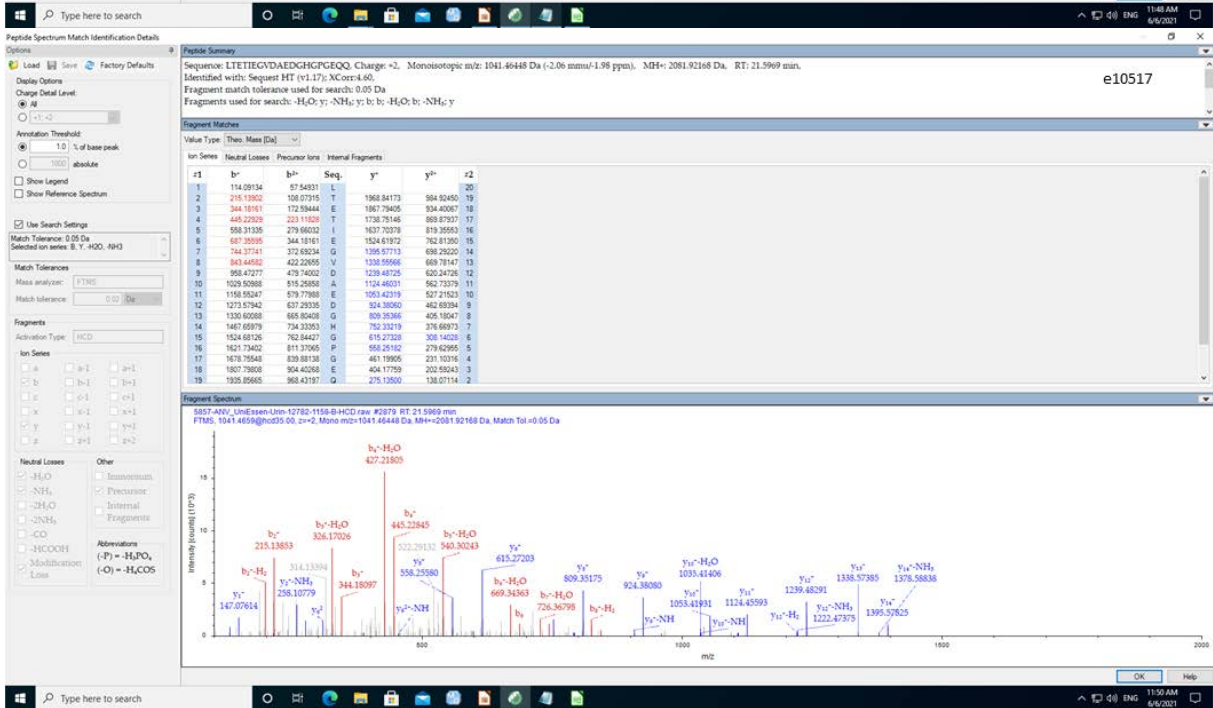
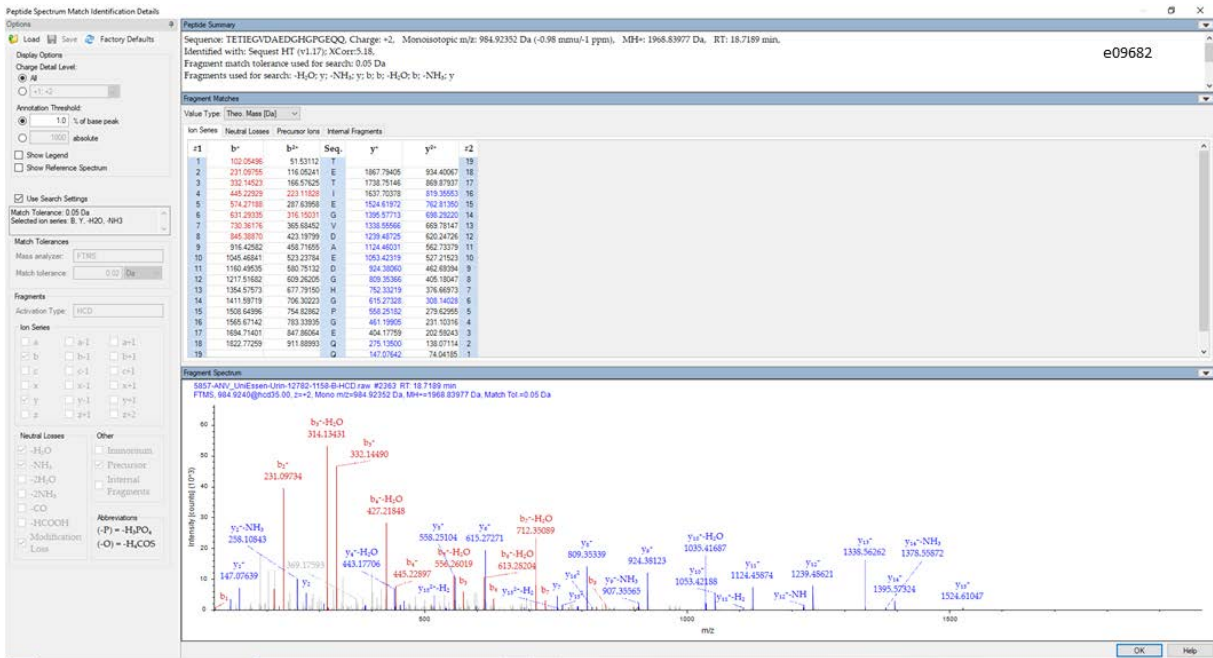
Fragment Spectrum

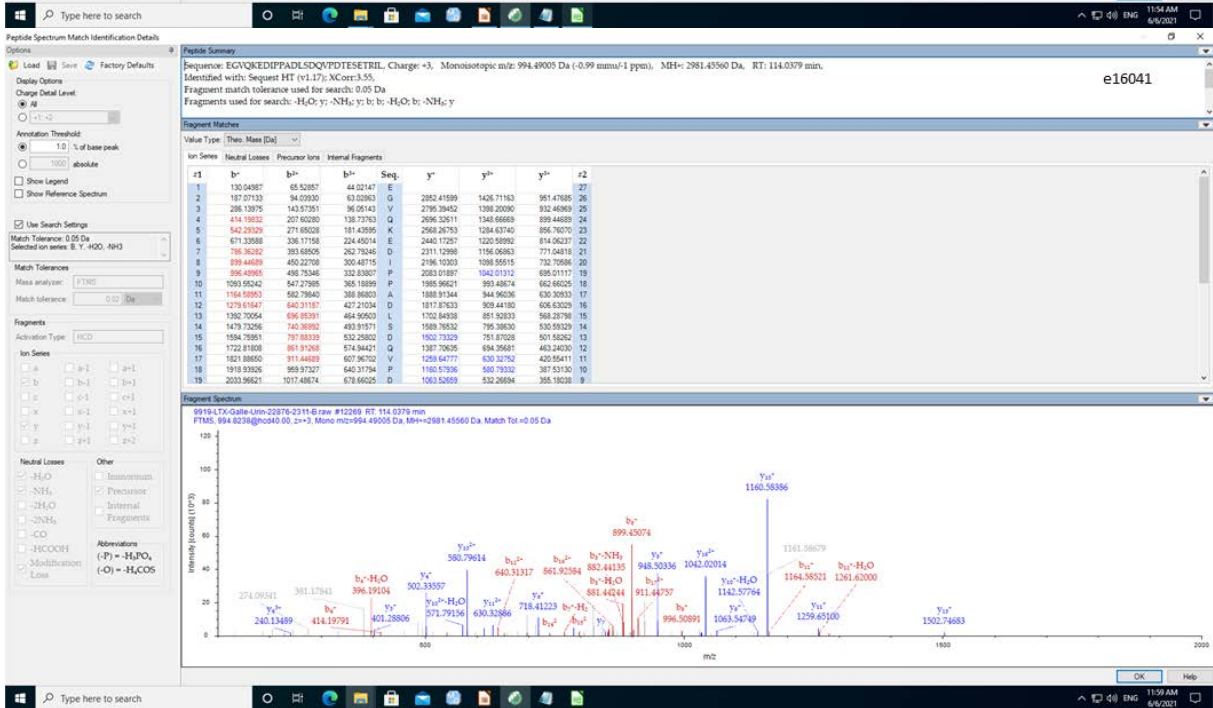
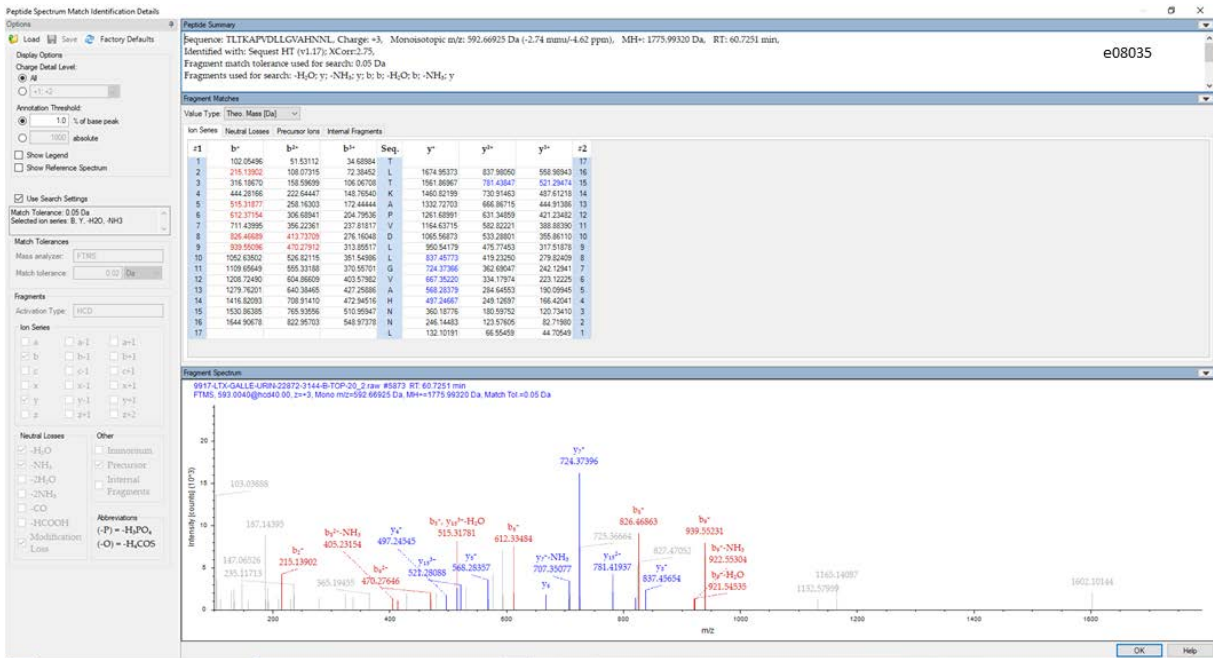
10516-BaPlex-Um-24687-2449-B_HCD raw #2437 RT: 26.8642 min

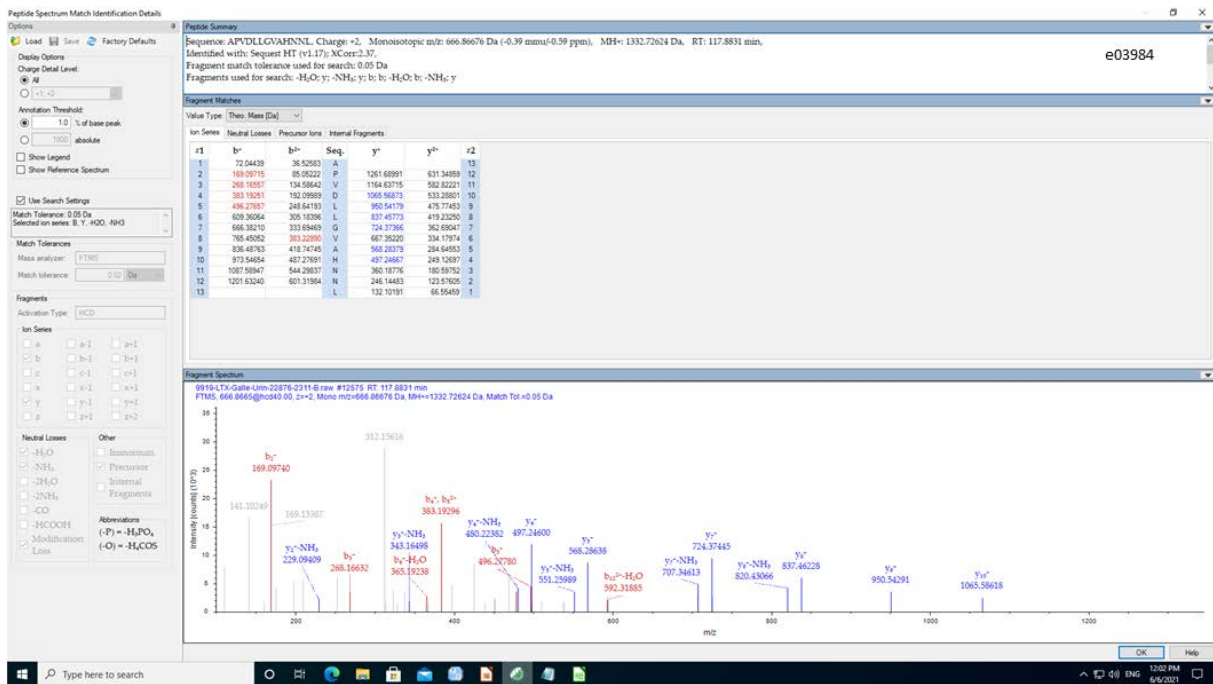
FTMS, 968.4830@ms05.00, z=+2, Mono m/z=968.97766 Da, MH+=1936.94805 Da, Match Tol=0.05 Da





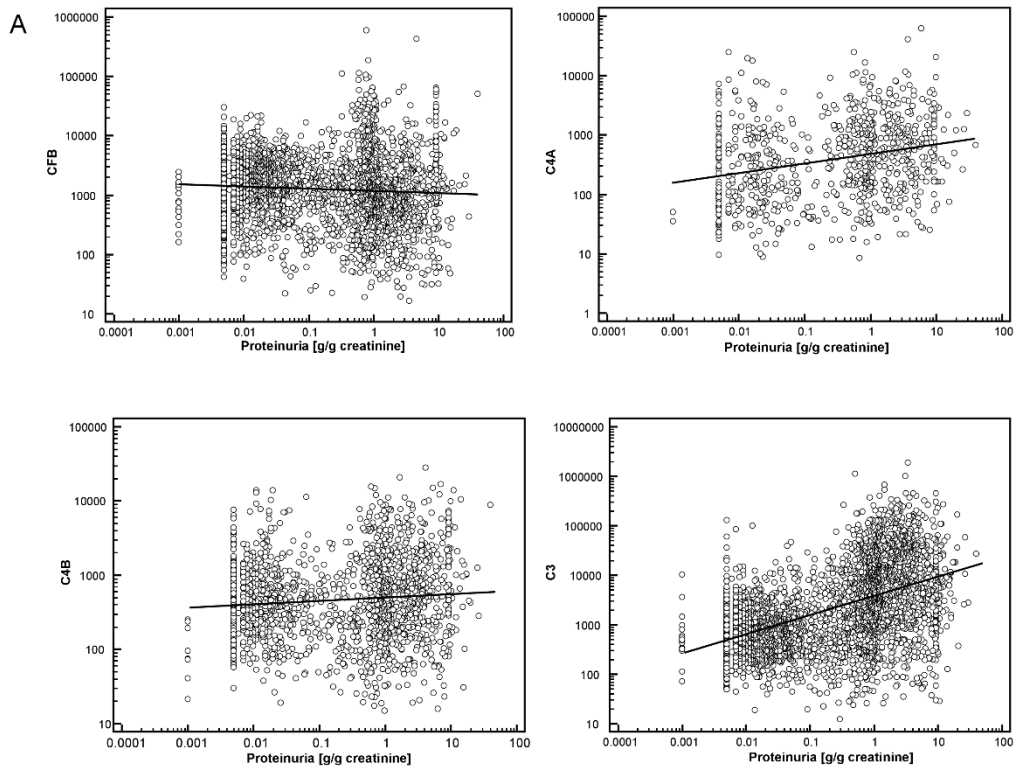






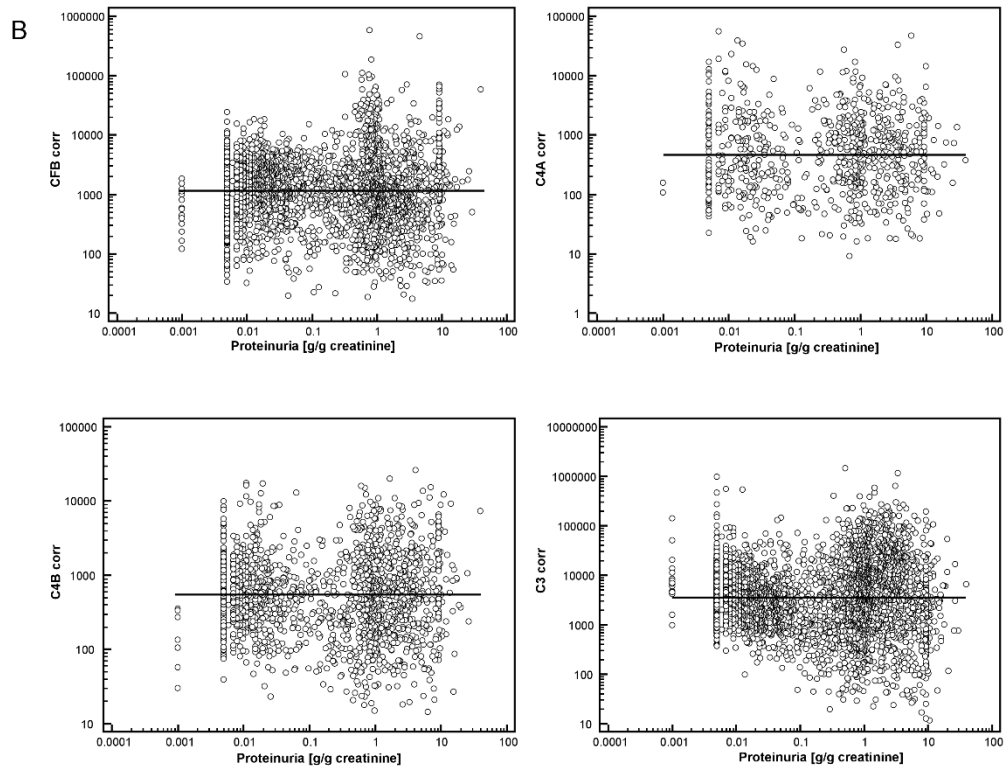
Supplementary Figure 1: Tandem mass spectra and assignment of sequences of the 23 complement derived urine peptides detected.

Supplementary Figure 2



Supplementary Figure 2: Association of the combined abundance of complement peptides (from Complement factor B, 4A, 4B and 3) with proteinuria, A) prior and B) after adjustment for proteinuria.

Supplementary Figure 3



Supplementary Figure 3: Association of proteinuria with eGFR in the study population. As expected, a highly significant correlation is detectable.

N	disease/condition	e13403	e11594	e11703	e12606	e10517	e08566	e09682	e08161	e09265	e06142	e08035	e03984	e00117	e09429	e16041	e17084	e18666	e12939	e14381	e16109	e06787	e08849	e09686
422	acute_kidney_injury	56,01	2,94	0,47	31,43	44,29	0,83	0,33	22,63	1,15	18,90	45,07	1,16	2,65	55,02	5,38	0,58	0,29	57,80	21,84	27,08	1,04	11,90	7,81
273	ADPKD	7,13	3,81	3,66	1,62	0,80	1,96	1,23	0,66	2,16	0,35	0,26	0,20	0,57	5,34	0,82	0,97	0,90	5,74	1,48	0,37	1,39	1,15	2,20
8	amyloidosis	0,00	2,89	0,29	1,43	2,96	0,26	0,36	24,43	0,36	0,00	0,00	0,00	0,00	0,00	1,51	0,06	0,00	38,01	1,15	0,00	2,33	0,00	8,90
8	atypical_hemolytic_uremic_syndrome	0,00	0,07	0,00	0,44	0,00	0,89	0,00	0,00	0,16	1,15	0,00	0,00	0,00	33,93	0,66	0,15	0,00	0,33	0,78	0,00	0,15	0,00	0,00
24	C3_glomerulopathy	0,00	0,31	0,31	0,49	4,72	0,50	3,68	5,44	0,83	5,18	14,68	0,00	2,04	293,83	0,55	0,00	0,00	60,96	7,93	0,00	1,37	5,49	2,03
567	CAKUT	14,23	6,50	0,99	1,70	1,00	0,40	13,18	0,61	3,01	0,15	2,69	0,46	0,46	0,23	0,34	1,61	3,87	4,72	1,89	23,21	0,40	1,39	2,15
4428	DiabetesMell_yes	0,31	1,72	0,51	1,59	9,58	1,43	0,77	3,31	1,82	1,42	9,11	0,75	1,75	6,69	1,76	0,71	0,84	4,54	1,37	2,23	0,96	3,01	1,28
1401	diabetic_nephropathy	2,57	0,83	0,18	1,79	3,35	0,62	0,20	39,53	0,84	6,26	10,74	5,70	0,97	179,37	2,23	0,12	0,36	129,57	8,21	2,98	2,30	4,68	5,78
12	fanconi_syndrom	3,46	2,23	0,07	0,95	0,00	0,00	4,15	0,00	1,99	0,21	0,00	0,00	0,00	0,00	2,10	0,00	0,41	0,15	5,15	1,80	0,61	9,37	0,00
126	FSGS	2,42	1,83	0,35	5,61	4,26	0,81	1,54	25,26	1,75	7,19	64,36	1,91	3,76	50,13	3,40	0,20	0,51	206,63	5,96	150,08	1,43	4,62	9,23
811	IgAN	20,24	1,68	0,56	1,59	6,29	0,78	0,75	10,81	1,11	5,16	65,72	0,56	3,11	109,19	1,67	0,30	0,09	114,80	10,21	7,02	2,40	4,70	127,85
50	MCD	0,00	9,41	0,82	0,50	8,54	2,08	0,45	31,91	1,19	2,18	0,00	0,00	1,47	358,95	0,32	0,07	0,00	452,90	23,43	79,50	4,10	12,80	0,94
113	MGN	0,86	1,68	0,22	2,72	8,56	0,96	0,61	111,32	2,05	15,72	26,65	0,36	3,13	79,38	3,01	0,04	0,00	176,52	13,61	0,36	4,34	26,57	20,77
66	Morbus_Fabry	12,18	2,66	0,10	1,02	4,02	0,86	1,99	1,42	1,11	1,33	0,00	0,67	0,52	30,88	0,54	0,85	0,26	12,56	2,94	1,27	0,73	8,63	2,04
50	MPGN	33,52	1,86	2,19	12,69	11,41	0,94	22,91	16,14	1,61	7,13	38,93	0,24	5,13	56,08	2,85	0,04	0,21	82,29	6,61	3,56	2,13	4,43	3,20
104	hypertensive_nephrosclerosis	5,89	1,68	0,11	5,37	34,01	0,43	0,24	1,36	0,61	2,11	6,58	0,00	1,75	25,74	13,37	0,33	0,92	35,43	2,77	0,16	0,73	22,64	4,10
127	nephrotic_syndrom	45,54	2,66	2,58	1,39	5,90	2,42	15,89	104,96	7,52	21,36	33,29	4,40	3,10	353,70	0,84	0,94	0,33	256,27	20,75	120,66	2,69	211,49	2,70
2300	NTx	17,16	0,94	0,26	3,40	1,87	0,50	1,02	5,60	0,71	3,63	32,61	0,77	3,33	8,45	1,38	0,67	0,21	11,72	3,75	2,87	1,40	7,59	2,91
20	SLE	0,00	0,04	0,00	0,99	0,00	0,34	0,00	0,00	0,48	0,00	0,00	0,00	0,11	0,00	1,81	0,08	4,83	0,00	0,56	0,00	0,33	0,00	0,00
94	SLE_nephritis	1,65	1,44	1,18	2,06	6,63	0,48	0,21	9,48	1,51	3,96	54,33	4,72	0,52	71,33	3,01	0,19	3,73	131,44	5,07	1,17	1,10	7,32	7,77
159	vaskulitis	31,61	0,47	0,05	16,78	6,82	0,33	0,23	2,89	0,25	1,47	54,30	0,04	7,60	33,40	6,93	0,25	1,37	36,48	2,97	6,88	0,68	3,13	9,00
4864	normal_control	1,00	1,00	1,00	1,00	1,00	1,00	1,00	1,00	1,00	1,00	1,00	1,00	1,00	1,00	1,00	1,00	1,00	1,00	1,00	1,00	1,00	1,00	1,00

Supplementary Table 1 Relative abundance of all 23 collagen derived peptides, listed per disease group, normalized to the normal controls.