

Title

High resolution linear epitope mapping of the receptor binding domain of SARS-CoV-2 spike protein in COVID-19 mRNA vaccine recipients.

Short title

RBD linear epitopes in COVID-19 mRNA vaccine recipients

Authors

Yuko Nitahara¹, Yu Nakagama¹, Natsuko Kaku¹, Katherine Candray¹, Yu Michimuko¹, Evariste Tshibangu-Kabamba¹, Akira Kaneko¹, Hiromasa Yamamoto², Yasumitsu Mizobata², Hiroshi Takeya³, Mayo Yasugi^{4,5,6}, Yasutoshi Kido^{1*}

¹Department of Parasitology & Research Center for Infectious Disease Sciences, Graduate School of Medicine, Osaka City University, 1-4-3 Asahi-machi, Abeno-ku, Osaka 545-8585, Japan

²Department of Traumatology and Critical Care Medicine, Graduate School of Medicine, Osaka City University, 1-4-3 Asahi-machi, Abeno-ku, Osaka 545-8585, Japan

³Department of Infection Control Science, Graduate School of Medicine, Osaka City University, 1-4-3 Asahi-machi, Abeno-ku, Osaka 545-8585, Japan

⁴Department of Veterinary Science, Graduate School of Life and Environmental Sciences, Osaka Prefecture University, 1-58 Rinku-Ourai Kita, Izumisano, Osaka 598-8531, Japan

⁵Osaka International Research Center for Infectious Diseases, Osaka Prefecture University, 1-58 Rinku Ourai Kita, Izumisano, Osaka 598-8531, Japan

⁶Asian Health Science Research Institute, Osaka Prefecture University, 1-58 Rinku Ourai Kita, Izumisano, Osaka 598-8531, Japan

* Corresponding Author: Yasutoshi Kido, M.D., Ph.D.

Department of Parasitology, Graduate School of Medicine & Research Center for Infectious Disease Sciences,

Osaka City University, 1-4-3 Asahi-machi, Abeno-ku, Osaka 545-8585, Japan. Phone: +81-6-6645-3761. Fax: +81-6-6645-3762. E-mail: kido.yasutoshi@med.osaka-cu.ac.jp

Keywords

SARS-CoV-2; spike; RBD; COVID-19; neutralizing antibodies; serology

Abstract

The prompt rollout of the coronavirus disease (COVID-19) messenger RNA (mRNA) vaccine facilitated population immunity, which shall become more dominant than natural infection-induced immunity. At the beginning of the vaccine era, the initial epitope profile in naïve individuals will be the first step to build an optimal host defense system towards vaccine-based population immunity. In this study, the high-resolution linear epitope profiles between Pfizer-BioNTech COVID-19 mRNA vaccine recipients and COVID-19 patients were delineated by using microarrays mapped with overlapping peptides of the receptor binding domain (RBD) of severe acute respiratory syndrome coronavirus 2 (SARS-CoV-2) spike protein. The vaccine-induced antibodies targeting RBD had broader distribution across the RBD than that induced by the natural infection. The relatively lower neutralizing antibody titers observed in vaccine-induced sera could attribute to less efficient epitope selection and maturation of the vaccine-induced humoral immunity compared to the infection-induced. Furthermore, additional mutation panel assays showed that the vaccine-induced rich epitope variety targeting the RBD may aid antibodies to escape rapid viral evolution, which could grant an advantage to the vaccine immunity.

Introduction

Messenger RNA (mRNA) vaccines have prevailed globally to mitigate the pandemic of the coronavirus disease 2019 (COVID-19). Due to the prompt progress of vaccine development and the rollout since the pandemic, it is likely that population immunity against severe acute respiratory syndrome coronavirus 2 (SARS-CoV-2) will largely depend on vaccine-induced rather than the

infection-induced immunity. In this start of the COVID-19 vaccine era, the *de novo* repertoire in naïve individuals, the molecular dynamics of B-cell response to SARS-CoV-2, will be the first step to build an optimal host defense system towards vaccine-based population immunity. Currently, the efficacy of vaccine-induced immunity against SARS-CoV-2 in an individual is evaluated by potential surrogate markers such as half-maximal neutralization titers (NT50) using live/pseudo viruses and total antibodies titers against the receptor binding domain (RBD) of the spike protein of the virus (1–4). Understanding the epitope profile of both vaccine recipients and COVID-19 patients shall readily elucidate the molecular basis of these markers as surrogate. Moreover, the coevolution of vaccine-induced host immunity and the virus escape will be one of the most important elements to consider in the way of achieving herd immunity against COVID-19.

The RBD of the spike glycoprotein of SARS-CoV-2 is widely considered as a key protein target for designing vaccines and developing neutralizing antibodies as therapeutic agents (5,6). As epitope profiles of naturally infected COVID-19 patients' sera have identified several immunodominant regions in the spike protein, most linear epitopes are located outside the RBD of the spike protein, while anti-RBD antibodies consist minor proportion of the total anti-spike IgG epitopes (7–11). Nonetheless, the majority of the neutralizing monoclonal antibodies (NAbs) derived from convalescent sera target the RBD, which imposes its crucial role in virus neutralization (6,12–16). Based on the steric binding orientation of the anti-RBD NAbs, four different categories of NAbs have been proposed (17,18). While a growing number of individuals acquire vaccine immunity, detailed epitope profile of the humoral immune response to the mRNA vaccine is not fully understood (1,19,20).

In this study, high resolution linear epitope profiling targeting the RBD was performed using sera of both mRNA vaccine recipients and COVID-19 patients. Comparing the detailed epitope profiling analysis and the serological markers, we sought to describe the humoral immune response elicited by mRNA vaccination and natural infection, which will be crucial in this post-vaccine era of the

COVID-19 pandemic.

Materials and Methods

Serum collection

Two groups were analyzed in this study: (i) vaccine recipients, all received two doses of BNT162b2 mRNA vaccine (Pfizer/BioNTech) with a three-week interval (N=21, age 20s–80s years old). Blood was obtained 17–28 days after the second dose. The first mRNA vaccine approved in Japan was Pfizer/BioNTech's BNT162b2 and Moderna's mRNA-1273 was the second. (ii) COVID-19 patients confirmed by nucleic amplification testing (N=20, age 20s–80s years old). The blood collection of the patients was performed between 10 and 63 days (median 39 days) after the onset. Detailed information of the subjects and severity of the disease of the patients can be found in Supplemental Table 1 (21).

Blood samples were obtained by venipuncture in serum separator tubes and the serum fraction was store at -80°C . All subjects provided written consent before participating in this study. This study was approved by the institutional review board of Osaka City University (#2020-003) and the Graduate School of Life and Environmental sciences and the Graduate School of Sciences, Osaka Prefecture University.

Anti-RBD IgG quantification by chemiluminescent immunoassay

Anti-RBD IgG titers of both groups were quantitated by measuring the chemiluminescence generated in the reaction mix containing serum IgG-bound, RBD-coated microparticles and acridinium-labeled anti-human IgG (Abbott SARS-CoV-2 IgG II Quant assay, USA)(22). Antibodies targeting the viral nucleocapsid protein (Anti-N IgG) was also performed on vaccine recipients to screen unrecognized exposure to SARS-CoV-2 prior to the vaccination (Abbot SARS-CoV-2 IgG assay, USA) (23).

Neutralization assay using live SARS-CoV-2

The neutralization assay was carried out as described previously (24), but with modifications. Heat-inactivated (at 56°C for 45 minutes) vaccine-recipients and patients' sera and a SARS-CoV-2 negative control serum were serially four-fold diluted with Dulbecco's Modified Eagle Medium with 2% fetal bovine serum (2% FBS DMEM) and incubated with a pre-titrated 150 focus-forming units of SARS-CoV-2 JPN/TY/WK521 strain live virus particles (National Institute of Infectious Diseases, Japan) at 37°C for 1 hour. The monolayer of VeroE6 cells (National Institutes of Biomedical Innovation, Health and Nutrition, Japan) were then absorbed with the mixtures at 37°C. After a 1-hour incubation, the mixtures were replaced with fresh 2% FBS DMEM. After an 8-hour culture at 37°C, infection rates of the cells were determined by immunofluorescent staining, as follows. After fixation (4% paraformaldehyde, 15 minutes), cells were permeabilized (0.1% TritonX100, 15 minutes) and incubated with rabbit anti-spike monoclonal antibodies (Sino biological, China) (1:1000, 1 hour at 37°C). Cells were then washed and incubated with Alexa488-conjugated goat anti-rabbit IgG (ThermoFisher scientific, USA) (1:500, 45 minutes at 37°C). Antigen positive cells were counted under a fluorescent microscope and the percentage of neutralization was estimated as the viral infectivity under serum-treated conditions compared with that without serum.

Epitope mapping of the RBD

For precise linear epitope screening, overlapping 15-mer peptides (shift by 3 amino acids) were sequentially synthesized according to the sequence of the RBD on cellulose membrane by MultiPep synthesizer (Intavis Bioanalytical Instruments, Germany) using SPOT technology (25,26). The sequence of the RBD was obtained by GenBank (accession: MN908947.3, S319–S541) Additional 15-mer peptides containing single mutations of variants of concerns found within the RBD were designed. Single mutations included K417N, K417T, E484K and N501Y(27). Detailed peptide sequences used in this study can be found in Supplement Table 2.

Synthesized arrays were probed with sera at a 1:400 dilution followed by incubation with horseradish

peroxidase conjugated goat anti-human IgA +IgG +IgM polyclonal antibody at a 1:30,000 dilution. The bound of the secondary antibody on each peptide was detected and quantified by enhanced chemiluminescence. The epitopes were detected by subjective visual inspection.

Data processing

Chemiluminescence signal intensities of the peptide arrays were standardized in two ways: relative values to the maximum signal level of each array as 100, and z-scores considering peptide signals of individual subjects as population. Half-maximal neutralization titers (NT50) of the neutralization assay were calculated using GraphPad Prism 9.1.0.221 and Microsoft Excel for Microsoft 365 MSO (16.0.14026.20202).

The sequence and conformational information of the RBD was obtained under the accession number 6M0J (5) and 7A94 (28) at Protein Data Bank. The images to depict the recognized epitopes are shown using The PyMOL Molecular Graphics System, Version 1.2r3pre, Schrödinger, LLC.

Results

Total IgG titers targeting the RBD and neutralization assay using live SARS-CoV-2

All vaccine recipients (N=21) and COVID-19 patients (N=20) revealed seropositivity to anti-RBD IgG according to the manufacturer's threshold (>50 AU/mL) and the two groups did not show significant difference in their levels of titers (Figure 1a). However, the neutralization assay using live SARS-CoV-2 showed remarkably lower neutralizing titers in vaccine recipients' sera than the patients (Figure 1b). Relative anti-RBD antibody titers to NT50 values in individuals were calculated and plotted in Figure 1c, which suggested a discrepancy in epitope profiles between vaccine recipients and COVID-19 patients. None of the vaccine recipients were seropositive to anti-N IgG, ensuring that they were naïve to SARS-CoV-2 infection (Supplement Table 1).

Comparison of linear epitope profiles targeting the RBD of vaccine-elicited and infection-

elicited sera

Since the vaccine-elicited sera, although reactive to the RBD to similar extent, showed significantly reduced neutralization, we investigated the linear epitope profile of the anti-RBD antibodies elicited by the vaccination and the natural infection. Sera of five subjects from the vaccine recipients and ten from the patients were selected based on their anti-RBD antibody titers and NT50 (denoted as red dots in Figure 1). The sera were incubated with the designed microarrays arranged with 15-mer overlapping peptides of the RBD on the surface (Figure 2a). The designated array did not show any considerable unspecific binding of the secondary antibody.

We generated a heatmap according to the relative signals of the overlapping peptides (Figure 2a). Our epitope detection criteria were visually detectable as a significant peak in a graph depicting a mostly minimum of 0.5 z-score of the mean peptide signals (Figure 3) and/or regions previously reported as neutralizing antibodies in the RBD(17,29). Comparing the epitope profiles of the two groups, two types of epitopes were identified: (1) epitopes recognized by both groups and (2) epitopes recognized only by vaccine-elicited sera. Overall, seven linear epitopes were recognized within the RBD, four within (1): T415–F42, peptide No.33; R457–S477, peptide No.47–49; V433–N450, peptide No.39–40; V395–A411, peptide No.26–27 and three within (2): N334–A348, peptide No.6; S373–L390, peptide No.19,20; S514–F541, peptide No.66–71, respectively.

(1) Epitopes recognized by both groups

A total of four linear epitopes were recognized in both groups. Three (peptide No.33, No.39–40 and No.47–49) of them shared the epitope regions of the RBD with neutralizing monoclonal antibodies previously reported as class1 and class 3.

Two linear epitopes were identified at peptide No. 33 and peptides No.47–49, which share the epitopes with class 1 neutralizing antibodies(17). Also, peptide No. 39–40 shares epitope residues very similar to human monoclonal antibody REGN10987, categorized as Class 3 neutralizing

antibody which sterically hinders angiotensin converting enzyme 2 (ACE2) interaction (17).

Linear epitope (peptide No.26–27) was reactive at the highest level in most serum samples; sera of 2/5 vaccine recipients and 7/10 patients had maximum reactivity to this peptide. The antibodies binding to this epitope do not seem to contribute to neutralizing the live virus, based on the findings we experienced. This peptide was found highly reactive in a serum of a COVID-19 patient who had undergone Rituximab treatment, whose neutralizing antibody titer was not sufficient (For details, see Supplement Figure 1)(30). In the RBD structure, No.27 peptide is located inside the core β sheets, which is not exposed to the surface of the RBD in either an “up” or “down” position. Judging from the structural composition, this linear epitope does not seem to affect ACE2 binding (Supplement Figure 1).

(2) Epitopes recognized only by vaccine recipients’ sera

Three linear epitopes of the RBD were uniquely found in vaccine recipients’ sera, two (peptide No.6 and No.19,20) of them shared the epitope regions of the RBD with neutralizing monoclonal antibodies previously reported as class 3 and class 4.

At the start of the RBD peptide, we identified an epitope region detected only in vaccine-induced sera broadly at peptide No.1–6. Especially, peptide No. 6 shall be the epitope, which class3 Nab S309 would recognize by sharing residues P337–A344 helix (31). The epitope is distinct from the receptor-binding motif and has a good accessibility both in up and down composition of the RBD (PDB, 7A49, Figure 5).

Another identified epitope peptide No.19,20 shared epitope residues with a neutralizing monoclonal antibody CR3022, categorized as class 4, isolated from a SARS-CoV convalescent (32). This class 4 neutralizing antibody attaches to RBD but distal from the ACE2 binding and is highly conserved between the species (18).

The third epitope, located at peptide No.66–71, did not match any existing mAbs. Yi et al. detected

the same region of the peptide (V524–F541) reactive from COVID-19 convalescent serum, although it non-specifically interacted with control sera (11).

Linear epitopes mapping with single mutations found in SARS-CoV-2 variants

Single amino acid mutations in the RBD are reported in the variants of concerns: B.1.1.7, B.1.351 and P.1 (PANGO lineage (33)). The mutation loci E484K and N501Y, which correspond to peptides No.52–61 in Figure 3, did not show any significant reactivity. The peptides No.29-33 containing K417, considered as an escape mutation, was reactive to the class 1 NAb in both patients and vaccine recipients' sera as mentioned above.

Additional 15-mer peptides with substituting amino acid as mentioned in the method section were incubated with both vaccine recipients' and patients' sera. Interestingly, vaccine-induced sera showed consistent signal to the mutation peptides, whereas patients' sera had almost no reaction (Figure 6).

Discussion

This study revealed the linear epitope profile targeting RBD elicited by mRNA vaccination and natural infection of SARS-CoV-2. Our principal finding was that the variation of linear epitopes was broader in vaccine-elicited antibodies than infection-elicited antibodies, which may contribute to the potent neutralization against the variants of concerns.

Several NAbs against SARS-CoV-2 have been isolated from COVID-19 convalescent donors. Now, four categories of NAbs classes are proposed to characterize the mode of recognition and epitope specificity (17). Class 1 NAbs block several proximal sites in the receptor binding motif (RBM) of the RBD and block ACE2 binding; class 2 recognize both up and down formations of the RBDs and epitope overlapping or close to ACE2-binding site; class 3 recognize both up and down RBD and bind outside ACE2-binding site; class 4 bind only to up RBDs and do not block ACE2. Many of the human-isolated NAbs target RBD, while some target N-terminal domain of subunit 1 spike protein

(14,34).

In our study, the linear epitopes of the RBD were outlined using both infection-induced sera and the vaccine-induced sera. Both groups recognized epitopes previously described as NAbs: peptide No.33 and peptide No.47–49 were class 1 and peptide No.39–40 was class 3. In contrast, there were two classes of NAbs that were exclusively found in vaccine-elicited sera, class 3 Nab eliciting peptide No.6 and class 4 Nab eliciting No.19–20. The linear epitopes specifically identified in vaccine-induced antibodies were found outside the ACE2-binding site (Figure 5), while both vaccine and infection-elicited linear epitopes were found close to the ACE2-binding site.

Many of the NAbs targeting RBM, which correspond to class 1 and 2, revealed decreased neutralization against the virus variants (15,20,35). For example, antibodies recognizing the observed linear epitope peptide No.33 would possibly fail to neutralize variants with K417N mutation as previously described (15,20,35,36). The linear epitopes, peptide No.6 and No.19–20, found only in vaccine-elicited sera revealed corresponding epitopes of the human NAbs isolated from SAR-CoV convalescent (S309 and CR3022, respectively). These cross-neutralizing antibodies readily indicate that these linear epitopes were highly conserved among the species considering the RBD is one of the most variable regions. In this context, mRNA vaccine-induced immunity, which has found to harbor broader variety in epitope profiles including class 3 and class 4 NAbs epitopes, shall be less vulnerable to the virus escaping than with infection-induced immunity (37,38). These regions are reported more conserved and resistant to mutation escape (15,20). Vaccine recipients' broader epitope profile across the RBD may give immunological flexibility against this evolving virus.

Our mutation peptide panels showed a rather optimistic view for the efficacy of vaccine-induced immunity to capture the SARS-CoV-2 variants (Figure 6). However, the linear epitope profiles in the mutation loci were not dominant in either vaccine sera or patients' sera (Figure 2b). Therefore, we conclude that the proportion of linear epitopes contributing to neutralization in these regions with

mutations is limited (10,11,14,19), contrary to the conformational epitopes found abundantly in NAbs around the RBM.

The specificity of the linear epitope profile was higher in each patient than in the vaccine recipients, especially within neutralizing epitopes (Figure 4, Individual epitope distribution can be found in Supplement Figure 2). This phenomenon supports the idea that the infection-provoked repertoire maturation starts within as early as 10-20 days after onset, in concordance with proceeding reports noting immune repertoire change in COVID-19 patients even as early as 4–7 days after onset (39,40). This may indicate faster maturation of antibodies induced by natural infection when compared to vaccine-induced antibodies. Nevertheless, in this study, we captured the peak period of immune reaction in the host for both groups. Therefore, longitudinal evaluation of the epitope profile and serological markers is needed to assess the further host immune evolution of both infection and vaccine-induced epitopes.

Moreover, these potentially neutralizing antibodies predominantly expressed in patients' sera might be attributed to the higher neutralizing titers observed in this study compared to vaccine recipients' sera which have broader variety in eliciting epitopes within RBD. Therefore, the discrepancy observed in serological markers, neutralizing antibody titers and anti-RBD IgG titers, between vaccine recipients and patients could be explained by the efficient epitope selection and maturation of the infection-induced humoral immunity. As for the potential use of anti-RBD antibody titers as a surrogate maker of the vaccine efficacy, the necessary anti-RBD antibody titers for vaccine-induced sera shall be higher than infection-induced sera to achieve the similar magnitude of neutralization power due to the apparent elevation of relative anti-RBD antibody titers to neutralizing titers (Figure 1c).

To conclude the study, we evaluated the similarity and difference in humoral immunity elicited by both vaccine and natural infection of SARS-CoV-2. High resolution linear epitope profiles revealed

the unique distribution of polyclonal antibodies across the RBD in vaccine recipients' sera, which possibly accounted for the discrepancy observed in serological markers. Based on the multiple neutralizing epitopes observed in vaccine linear epitope profile, mRNA vaccine-elicited humoral immunity may be more powerful in escaping the rapidly evolving pathogen than infection-acquired immunity.

Limitations

There are several limitations in our study. The severity of the COVID-19 patients evaluated in this study was high (seven out of ten were critical) with comorbidities, whereas the vaccine recipients were relatively healthy without major comorbidities. The age was distributed in both groups. This analysis was focused exclusively on the linear epitope profile targeting RBD. Experimental observations on compositional epitopes nor epitopes outside the RBD region was not made in this study.

Nonetheless, our results reporting the mRNA vaccine's broader RBD epitope variety are in concordance with preceding reports. This result was consistent with the recently reported immune profile of Moderna vaccines (37).

Author Approval

All authors have read and approved the manuscript.

Competing Interest Statement

The authors declare no competing interests to disclose.

Data Availability Statement

The data that supports the findings of this study are available in the supplementary material of this article.

Acknowledgements

This work was funded by Japan Agency for Medical Research and Development (AMED) under Grant number JP20wm0125003 (Yasutoshi Kido), JP20he1122001 (Yasutoshi Kido), JP20nk0101627 (Yasutoshi Kido), and JP20jk0110021 (Yu Nakagama). This work was also supported by JSPS KAKENHI Grant Number JP21441824 (Natsuko Kaku). We received support from Osaka City University's "Special Reserves" fund for COVID-19. We also receive the COVID-19 Private Fund (to the Shinya Yamanaka laboratory, CiRA, Kyoto University). Yuko Nitahara receives BIKEN Taniguchi Scholarship.

We are grateful for the virus provided by National Institute of Infectious Diseases, Tokyo, Japan.

We appreciate James A. Rankin for his contribution in checking the manuscript.

Author contribution

Nitahara Y, Nakagama Y, Kaku N and Kido Y designed the study.

Nitahara Y, Nakagama Y, Kaku N, Yamamoto H, Mizobata Y, Kakeya H, and Kido Y selected patients and acquired clinical data.

Nitahara Y, Nakagama Y, Kaku N, Candray K, Michimuko Y, Tshibangu-Kabamba E and Yasuji M performed immunological assays.

Nitahara Y, Nakagama Y, Kaku N and Kido Y performed epitope mapping analysis.

Nakagama Y and Yasuji M performed neutralization assays.

Nitahara Y, Nakagama Y, Kaku N and Kido Y wrote the manuscript and contributed to analysis and interpretation of the data.

Yamamoto H, Mizobata Y, Kakeya H, Kaneko A and Yasugi M contributed to critical discussion of the manuscript.

Figure 1. Total antibody titers targeting the RBD and neutralization of live SARS-CoV-2. (a) Anti-RBD IgG titers of vaccine (BNT162b2) recipients (N=21) and COVID-19 patients (N=19) were depicted. No significant difference in level of total anti-RBD IgG titers was observed. (b) The half-maximal neutralization titers were remarkably lower in the vaccinated group than in patients. (c) Anti-RBD IgG/NT50 ratio was plotted in both groups. For detailed information on subjects, see Supplement Table1.

Figure 2. High resolution linear epitope mapping of the receptor binding domain (RBD) of the SARS-CoV-2 spike protein. (a) Overlapping 15-mer peptides (shift by 3 amino acids) of the RBD was sequentially synthesized on cellulose membrane. Sera of vaccine recipients and COVID-19 patients were incubated with the microarray, followed by the procedure mentioned in the methodology section to detect the reactive peptides.

(b) Heat map identifying peptides recognized by IgG, IgA, and IgM in sera of vaccine recipients (Sample A–E) and COVID-19 patients (sample F–O). Signal of each peptide was calculated to relative value to the maximum signal of each subject as 100. Legend shows the darker the blue gets; the more signal was observed at the designated peptide.

Figure 3. Comparison of epitope profiles between two groups: Pfizer vaccine recipients (N=5) and COVID-19 patients (N=10). (a) Thin red lines denote peptide signals of individuals. Bold red lines depict the mean values of the peptide signals of the COVID-19 patients' sera (N=10). (b) Thin

grey lines denote peptide signals of individuals. Bold black lines denote the mean values of the peptide signals of the vaccine recipients' sera (N=5). (c) Red arrows denote epitopes recognized in the sera of both groups. Black arrows denote epitopes identified only in the vaccine recipients' sera. Designated peptide numbers are shown above the arrows.

Figure 4. Linear epitopes in the receptor binding domain (RBD) identified in both groups of vaccine recipients and COVID-19 patients. Angiotensin converting enzyme2 (ACE2); green, the RBD; tint blue, (a) linear epitope T415-F429 (peptide No.33); cyan (b) linear epitope R457-S477 (peptide No.47-49); yellow (c) linear epitope A433-S450 (peptide No.39-40); blue.

Figure 5. Linear epitopes in the receptor binding domain (RBD) identified only in vaccine recipients' sera. Angiotensin converting enzyme2 (ACE2) is shown in green. (a) The RBD is shown in tint blue. Linear epitope R334-S348 (peptide No.6); magenta. (b) SARS-CoV-2 spike trimer in one open, two closed (one RBD up, two RBD up) composition. Spike subunit 2 and N-terminal domain are in the same color, light blue, yellow, and tint blue. Up RBD is in dark blue, Down RBDs are in yellow. Linear epitope R334-S348 has good accessibility in both up and down composition of the RBD. (c) The RBD; green. Linear epitope S373-L390 (peptide No.19-20); orange.

Figure 6. Mutation peptide panels showed more reactivity to vaccine recipients' sera than to patients' sera. Heat maps identifying peptides containing single mutations recognized by IgG, IgA, and IgM in sera of vaccine recipients (Sample A–E) and COVID-19 patients (sample F–O). Signal of each peptide was calculated to relative value to the maximum signal of each subject as 100.

Supplement Figure 1. Epitope profile of a COVID-19 patient who had received Rituximab treatment. Peptide No. 27 was dominant in the epitope profile, which showed limited neutralization compared to COVID-19 positive serum sample. Graphic shows the ACE2-RBD complex. The position of peptide No.27 is depicted in dark gray.

Supplement Figure 2. Epitope profile of individual subjects. Z-scores of each peptide signal was

calculated. Vaccine-induced sera had more variety in recognizing epitopes than infection-induced sera.

Supplement Table 1. Detailed information of the subjects included in this study.

Supplement Table 2. Sequence of the peptides on microarrays used in this study.

Supplement Table 3. Raw signal of the microarrays.

References

1. Ebinger JE, Fert-Bober J, Printsev I, Wu M, Sun N, Prostko JC, et al. Antibody responses to the BNT162b2 mRNA vaccine in individuals previously infected with SARS-CoV-2. *Nat Med* [Internet]. 2021 Apr 1 [cited 2021 Jun 15];1–4. Available from: <https://doi.org/10.1038/s41591-021-01325-6>
2. Walsh EE, Frenck RW, Falsey AR, Kitchin N, Absalon J, Gurtman A, et al. Safety and Immunogenicity of Two RNA-Based Covid-19 Vaccine Candidates. *N Engl J Med* [Internet]. 2020 Dec 17 [cited 2021 Jun 25];383(25):2439–50. Available from: <http://www.nejm.org/doi/10.1056/NEJMoa2027906>
3. Mulligan MJ, Lyke KE, Kitchin N, Absalon J, Gurtman A, Lockhart S, et al. Phase I/II study of COVID-19 RNA vaccine BNT162b1 in adults. *Nature* [Internet]. 2020 Oct 22 [cited 2021 Jun 25];586(7830):589–93. Available from: <https://doi.org/10.1038/s41586-020-2639-4>
4. Müller L, Andrée M, Moskorz W, Drexler I, Walotka L, Grothmann R, et al. Age-dependent immune response to the Biontech/Pfizer BNT162b2 COVID-19 vaccination. *medRxiv* [Internet]. 2021 Jan 1;2021.03.03.21251066. Available from: <http://medrxiv.org/content/early/2021/03/05/2021.03.03.21251066.abstract>

5. Lan J, Ge J, Yu J, Shan S, Zhou H, Fan S, et al. Structure of the SARS-CoV-2 spike receptor-binding domain bound to the ACE2 receptor. *Nature* [Internet]. 2020;581(7807):215–20. Available from: <http://dx.doi.org/10.1038/s41586-020-2180-5>
6. Shang J, Ye G, Shi K, Wan Y, Luo C, Aihara H, et al. Structural basis of receptor recognition by SARS-CoV-2. *Nature* [Internet]. 2020 May 14 [cited 2021 Jun 14];581(7807):221–4. Available from: <https://doi.org/10.1038/s41586-020-2179-y>
7. Li Y, Ma M liang, Lei Q, Wang F, Hong W, Lai D yun, et al. Linear epitope landscape of the SARS-CoV-2 Spike protein constructed from 1,051 COVID-19 patients. *Cell Rep*. 2021 Mar 30;34(13):108915.
8. Haynes WA, Kamath K, Bozekowski J, Baum-Jones E, Casanovas-Massana A, Daugherty PS, et al. High-resolution mapping and characterization of epitopes in COVID-19 patients. [cited 2021 Jun 10]; Available from: <https://doi.org/10.1101/2020.11.23.20235002>
9. Voss WN, Hou YJ, Johnson N V., Delidakis G, Kim JE, Javanmardi K, et al. Prevalent, protective, and convergent IgG recognition of SARS-CoV-2 non-RBD spike epitopes. *Science* (80-) [Internet]. 2021 Jun 4 [cited 2021 Jun 11];372(6546):1108–12. Available from: <http://science.sciencemag.org/>
10. Li Y, Lai D yun, Zhang H nan, Jiang H wei, Tian X, Ma M liang, et al. Linear epitopes of SARS-CoV-2 spike protein elicit neutralizing antibodies in COVID-19 patients [Internet]. Vol. 17, *Cellular and Molecular Immunology*. Springer Nature; 2020 [cited 2021 Jun 11]. p. 1095–7. Available from: <https://doi.org/10.1038/s41423-020-00523-5>
11. Yi Z, Ling Y, Zhang X, Chen J, Hu K, Wang Y, et al. Functional mapping of B-cell linear epitopes of SARS-CoV-2 in COVID-19 convalescent population. *Emerg Microbes Infect* [Internet]. 2020 Jan 1 [cited 2021 Jun 14];9(1):1988–96. Available from: <https://doi.org/10.1080/22221751.2020.1815591>

12. Yi C, Sun X, Ye J, Ding L, Liu M, Yang Z, et al. Key residues of the receptor binding motif in the spike protein of SARS-CoV-2 that interact with ACE2 and neutralizing antibodies. *Cell Mol Immunol* [Internet]. 2020 Jun 1 [cited 2021 Jun 4];17(6):621–30. Available from: <https://doi.org/10.1038/s41423-020-0458-z>
13. Piccoli L, Park YJ, Tortorici MA, Czudnochowski N, Walls AC, Beltramello M, et al. Mapping Neutralizing and Immunodominant Sites on the SARS-CoV-2 Spike Receptor-Binding Domain by Structure-Guided High-Resolution Serology. *Cell*. 2020 Nov 12;183(4):1024-1042.e21.
14. Cerutti G, Guo Y, Zhou T, Gorman J, Lee M, Rapp M, et al. Potent SARS-CoV-2 neutralizing antibodies directed against spike N-terminal domain target a single supersite. *Cell Host Microbe*. 2021 May 12;29(5):819-833.e7.
15. Wang R, Zhang Q, Ge J, Ren W, Zhang R, Lan J, et al. Analysis of SARS-CoV-2 variant mutations reveals neutralization escape mechanisms and the ability to use ACE2 receptors from additional species. *Immunity* [Internet]. 2021 Jun 8 [cited 2021 Jun 25]; Available from: <https://linkinghub.elsevier.com/retrieve/pii/S1074761321002478>
16. Li Y, Lai D-Y, Zhang H-N, Jiang H-W, Tian X, Ma M-L, et al. Linear epitopes of SARS-CoV-2 spike protein elicit neutralizing antibodies in COVID-19 patients. *Cell Mol Immunol* [Internet]. 2020 [cited 2021 Jun 14];17:1095–7. Available from: <https://doi.org/10.1038/s41423-020-00523-5>
17. Barnes CO, Jette CA, Abernathy ME, Dam KMA, Esswein SR, Gristick HB, et al. SARS-CoV-2 neutralizing antibody structures inform therapeutic strategies. *Nature* [Internet]. 2020 Dec 24 [cited 2021 Jun 25];588(7839):682–7. Available from: <https://doi.org/10.1038/s41586-020-2852-1>
18. Yuan M, Wu NC, Zhu X, Lee CCD, So RTY, Lv H, et al. A highly conserved cryptic epitope

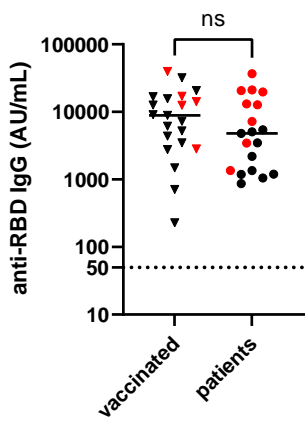
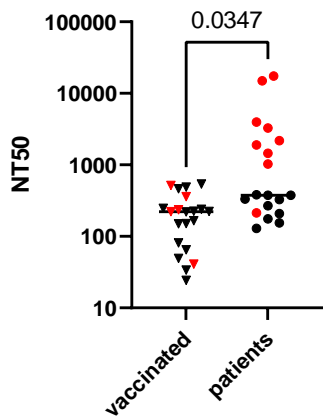
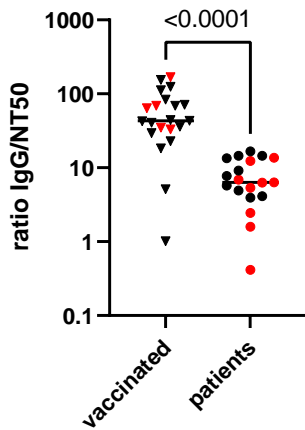
- in the receptor binding domains of SARS-CoV-2 and SARS-CoV. *Science* (80-) [Internet]. 2020 May 8 [cited 2021 Jun 26];368(6491):630–3. Available from: <http://science.sciencemag.org/>
19. Wisnewski A V, Redlich CA, Kamath K, Abad Q-A, Smith RF, Fazen L, et al. Immunogenic Amino Acid Motifs and Linear Epitopes of COVID-19 mRNA Vaccines. *medRxiv* [Internet]. 2021 May 25 [cited 2021 Jun 10];2021.05.25.21257427. Available from: <https://doi.org/10.1101/2021.05.25.21257427>
 20. Wang Z, Schmidt F, Weisblum Y, Muecksch F, Barnes CO, Finkin S, et al. mRNA vaccine-elicited antibodies to SARS-CoV-2 and circulating variants. *Nature* [Internet]. 2021 Apr 22 [cited 2021 Jun 15];592(7855):616–22. Available from: <https://doi.org/10.1038/s41586-021-03324-6>
 21. Diaz, Janet; Appiah, John; Askie, Lisa; Baller, April; Banerjee, Anshu; Barkley, Shannon; Bertagnolio, Silvia; Hemmingsen, Bianca; Bonet, Mercedes; Cunningham J. Clinical management Clinical management Living guidance COVID-19. World Heal Organ. 2021;(January).
 22. Tang MS, Case JB, Franks CE, Chen RE, Anderson NW, Henderson JP, et al. Association between SARS-CoV-2 Neutralizing Antibodies and Commercial Serological Assays. *Clin Chem* [Internet]. 2020 Dec 1 [cited 2021 Jun 30];66(12):1538–47. Available from: <https://academic.oup.com/clinchem/article/66/12/1538/5902446>
 23. Chew KL, Tan SS, Saw S, Pajarillaga A, Zaine S, Khoo C, et al. Clinical evaluation of serological IgG antibody response on the Abbott Architect for established SARS-CoV-2 infection. *Clin Microbiol Infect*. 2020 Sep 1;26(9):1256.e9-1256.e11.
 24. Yasugi M, Kubota-Koketsu R, Yamashita A, Kawashita N, Du A, Sasaki T, et al. Human Monoclonal Antibodies Broadly Neutralizing against Influenza B Virus. *PLoS Pathog*

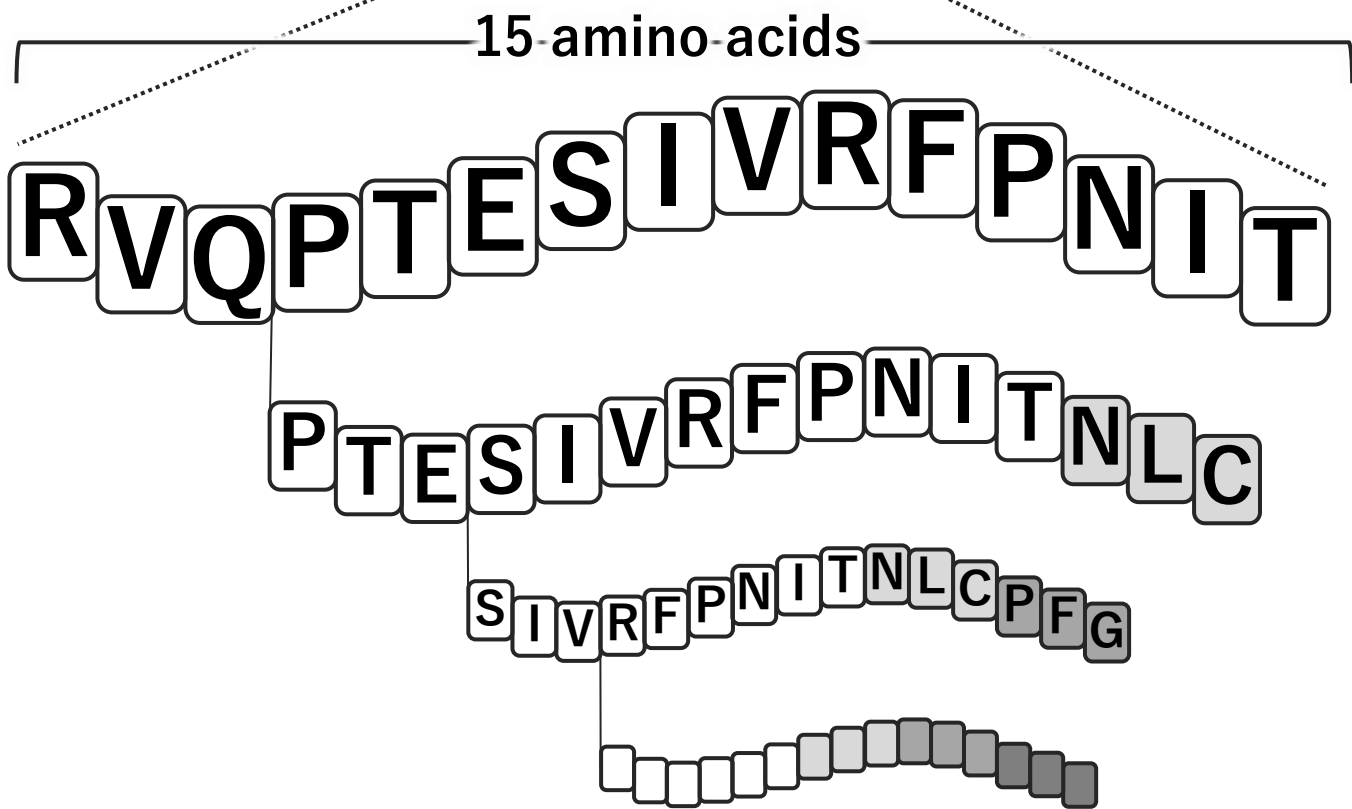
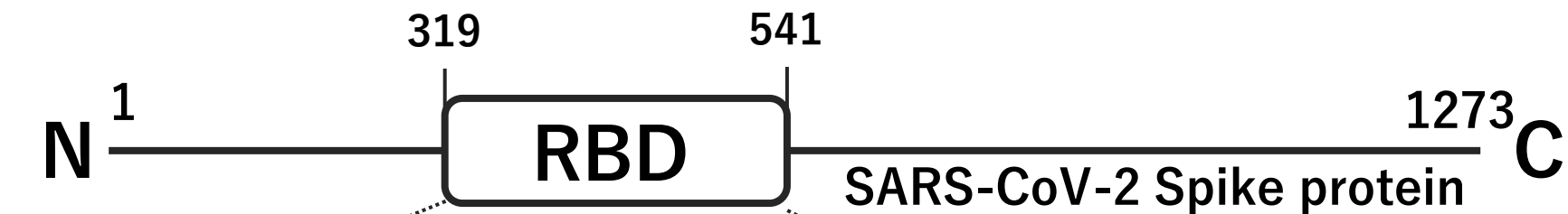
- [Internet]. 2013 Feb 7 [cited 2021 Jun 20];9(2):1003150. Available from: http://www.jst.go.jp/global/kadai/h2011_thailand.html
25. Ruppel E, Aÿ B, Boisguerin P, Dölle S, Worm M, Volkmer R. Identification of IgE Binding to Apig1-Derived Peptides. *ChemBioChem* [Internet]. 2010 Nov 2 [cited 2021 Jun 11];11(16):2283–93. Available from: <http://dx.doi.org/10.1002/cbic.201000322>.
 26. Volkmer R. Synthesis and application of peptide arrays: Quo vadis SPOT technology [Internet]. Vol. 10, *ChemBioChem*. John Wiley & Sons, Ltd; 2009 [cited 2021 Jun 11]. p. 1431–42. Available from: <http://www.jpt.com>
 27. Centers for Disease Control and Prevention. SARS-CoV-2 Variant Classifications and Definitions [Internet]. [cited 2021 Jun 30]. Available from: <https://www.cdc.gov/coronavirus/2019-ncov/variants/variant-info.html#Concern>
 28. Benton DJ, Wrobel AG, Xu P, Roustan C, Martin SR, Rosenthal PB, et al. Receptor binding and priming of the spike protein of SARS-CoV-2 for membrane fusion. *Nature* [Internet]. 2020 Dec 10 [cited 2021 Jun 24];588(7837):327–30. Available from: <https://doi.org/10.1038/s41586-020-2772-0>
 29. Yu F, Xiang R, Deng X, Wang L, Yu Z, Tian S, et al. Receptor-binding domain-specific human neutralizing monoclonal antibodies against SARS-CoV and SARS-CoV-2 [Internet]. Vol. 5, *Signal Transduction and Targeted Therapy*. Springer Nature; 2020 [cited 2021 Jul 2]. p. 1–12. Available from: <https://doi.org/10.1038/s41392-020-00318-0>
 30. Takakuwa T, Nakagama Y, Yasugi M, Maeda T, Matsuo K, Kiritoshi A, et al. Discrepant antigen-specific antibody responses causing SARS-CoV-2 persistence in a B-cell depleted patient on rituximab. *Intern Med*. Currently under review (Manuscript ID: IM-7884-21-C)
 31. Pinto D, Park YJ, Beltramello M, Walls AC, Tortorici MA, Bianchi S, et al. Cross-

- neutralization of SARS-CoV-2 by a human monoclonal SARS-CoV antibody. *Nature* [Internet]. 2020 Jul 9 [cited 2021 Jul 2];583(7815):290–5. Available from: <https://doi.org/10.1038/s41586-020-2349-y>
32. Ter Meulen J, Van Den Brink EN, Poon LLM, Marissen WE, Leung CSW, Cox F, et al. Human monoclonal antibody combination against SARS coronavirus: Synergy and coverage of escape mutants. *PLoS Med* [Internet]. 2006 Jul 4 [cited 2021 Jul 1];3(7):1071–9. Available from: www.plosmedicine.org
 33. O’Toole Á, Kraemer MUG, Hill V, Pybus OG, Watts A, Bogoch II, et al. Tracking the international spread of SARS-CoV-2 lineages B.1.1.7 and B.1.351/501Y-V2. *Wellcome Open Res* [Internet]. 2021 May 19 [cited 2021 Jun 30];6:121. Available from: <https://doi.org/10.12688/wellcomeopenres.16661.1>
 34. Suryadevara N, Shrihari S, Gilchuk P, VanBlargan LA, Binshtein E, Zost SJ, et al. Neutralizing and protective human monoclonal antibodies recognizing the N-terminal domain of the SARS-CoV-2 spike protein. *bioRxiv* [Internet]. 2021 Jan 1;2021.01.19.427324. Available from: <http://biorxiv.org/content/early/2021/01/20/2021.01.19.427324.abstract>
 35. Wang R, Zhang Q, Ge J, Ren W, Zhang R, Lan J, et al. SARS-CoV-2 variants resist antibody neutralization and broaden host ACE2 usage. *bioRxiv* [Internet]. 2021 Jan 1;2021.03.09.434497. Available from: <http://biorxiv.org/content/early/2021/03/15/2021.03.09.434497.abstract>
 36. Chen RE, Zhang X, Case JB, Winkler ES, Liu Y, VanBlargan LA, et al. Resistance of SARS-CoV-2 variants to neutralization by monoclonal and serum-derived polyclonal antibodies. *Nat Med* [Internet]. 2021 Apr 1 [cited 2021 Jun 28];27(4):717–26. Available from: <https://doi.org/10.1038/s41591-021-01294-w>
 37. Greaney AJ, Loes AN, Gentles LE, Crawford KHD, Starr TN, Malone KD, et al. Antibodies

elicited by mRNA-1273 vaccination bind more broadly to the receptor binding domain than do those from SARS-CoV-2 infection. *Sci Transl Med* [Internet]. 2021 Jun 8 [cited 2021 Jun 24]; Available from: <http://www.ncbi.nlm.nih.gov/pubmed/34103407>

38. Jalkanen P, Kolehmainen P, Häkkinen HK, Huttunen M, Tähtinen PA, Lundberg R, et al. COVID-19 mRNA vaccine induced antibody responses against three SARS-CoV-2 variants. *Nat Commun* [Internet]. 2021 Dec 28 [cited 2021 Jul 1];12(1):3991. Available from: <http://www.nature.com/articles/s41467-021-24285-4>
39. Niu X, Li S, Li P, Pan W, Wang Q, Feng Y, et al. Longitudinal Analysis of T and B Cell Receptor Repertoire Transcripts Reveal Dynamic Immune Response in COVID-19 Patients. *Front Immunol* [Internet]. 2020 Sep 30 [cited 2021 Jul 2];11:2590. Available from: www.frontiersin.org
40. Kreer C, Zehner M, Weber T, Ercanoglu MS, Gieselmann L, Rohde C, et al. Longitudinal Isolation of Potent Near-Germline SARS-CoV-2-Neutralizing Antibodies from COVID-19 Patients. *Cell*. 2020 Aug 20;182(4):843-854.e12.

a**b****c**



Peptide No.

1

2

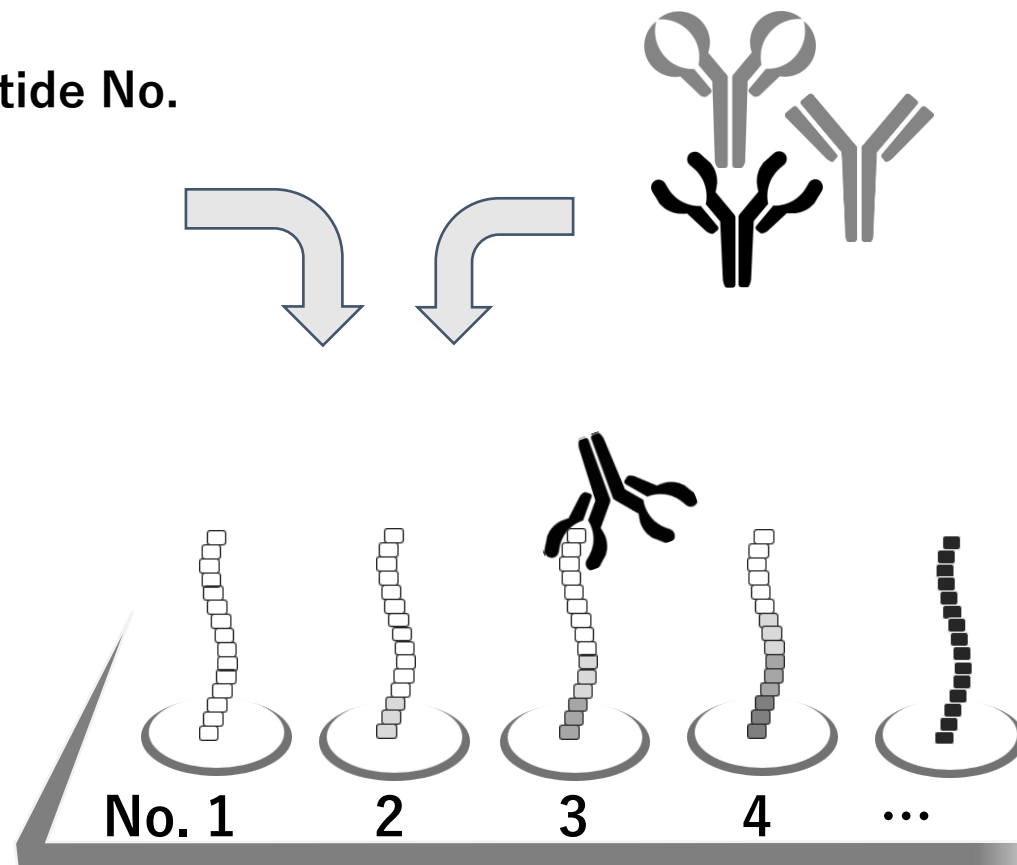
3

⋮

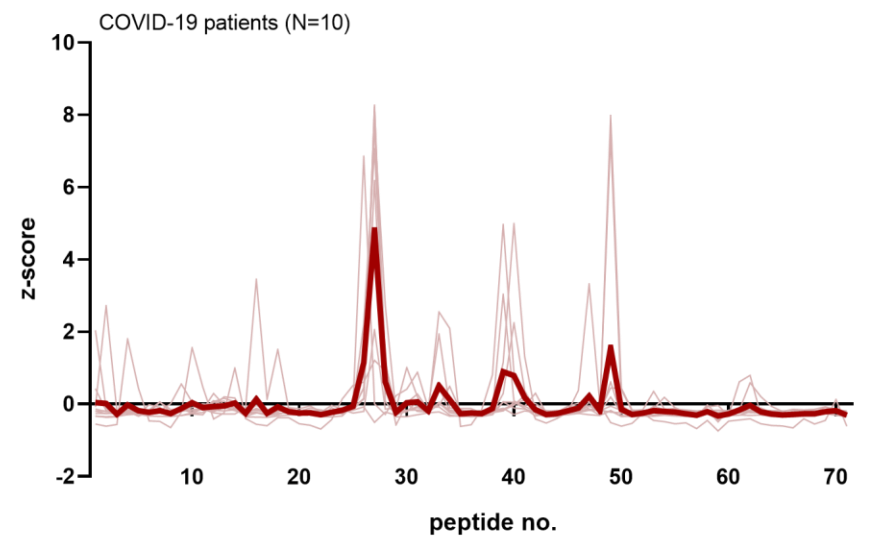
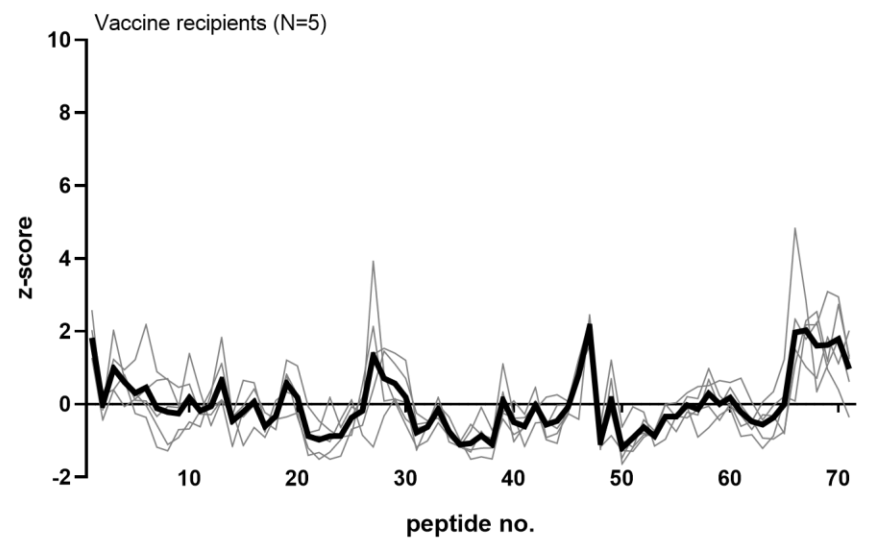
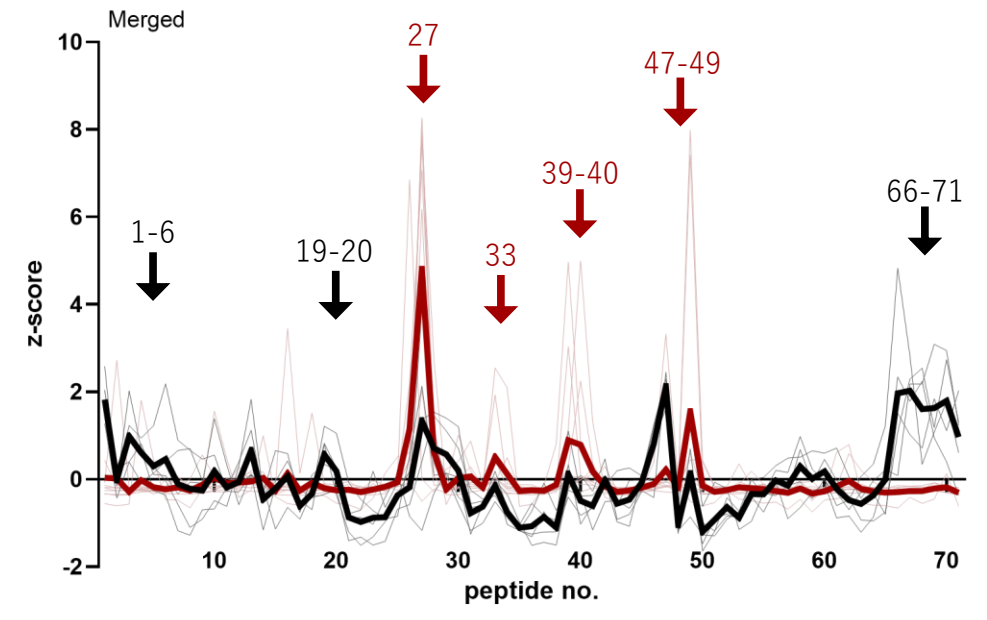
⋮

⋮

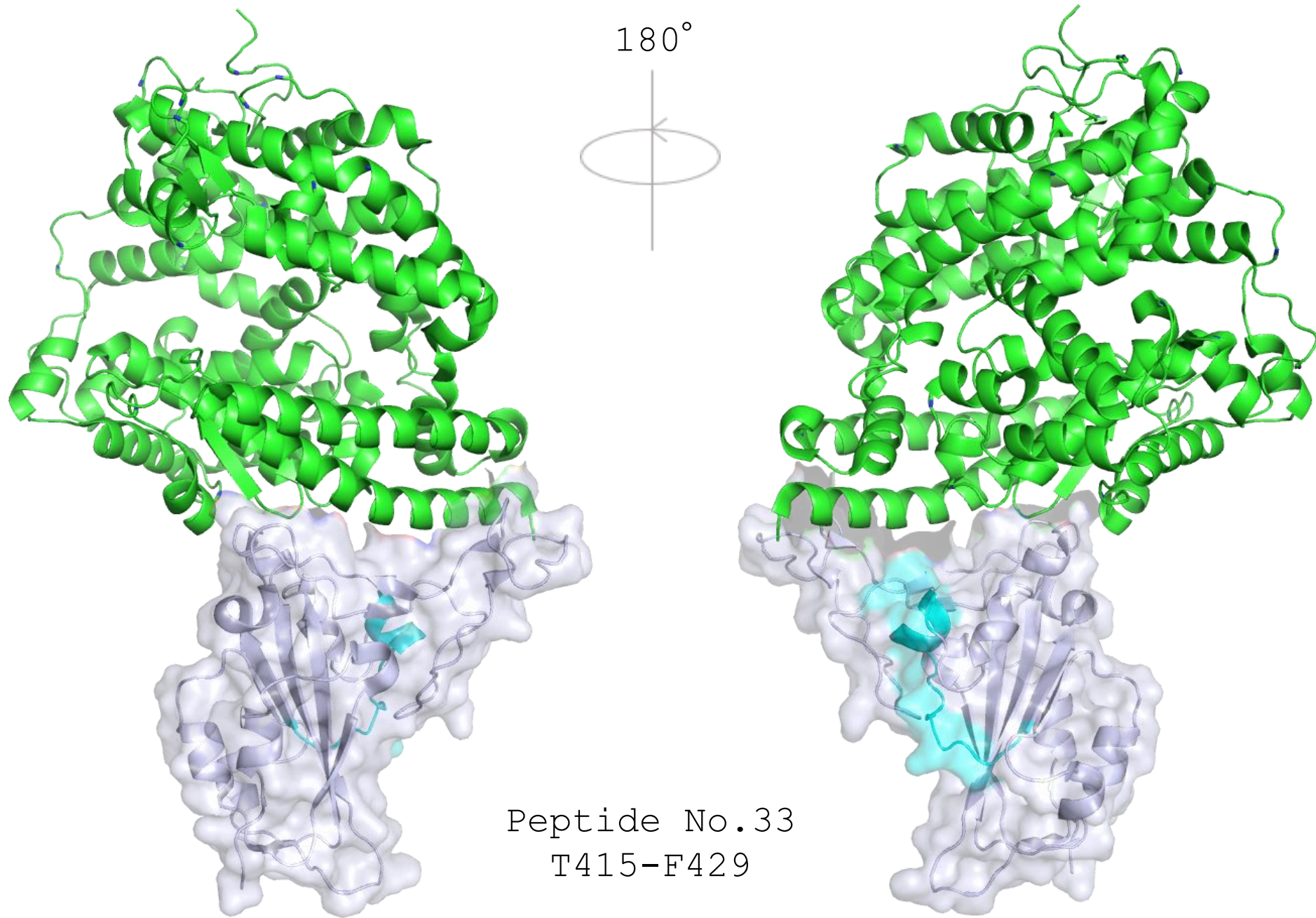
-Vaccine-elicited sera
-Infection-elicited sera



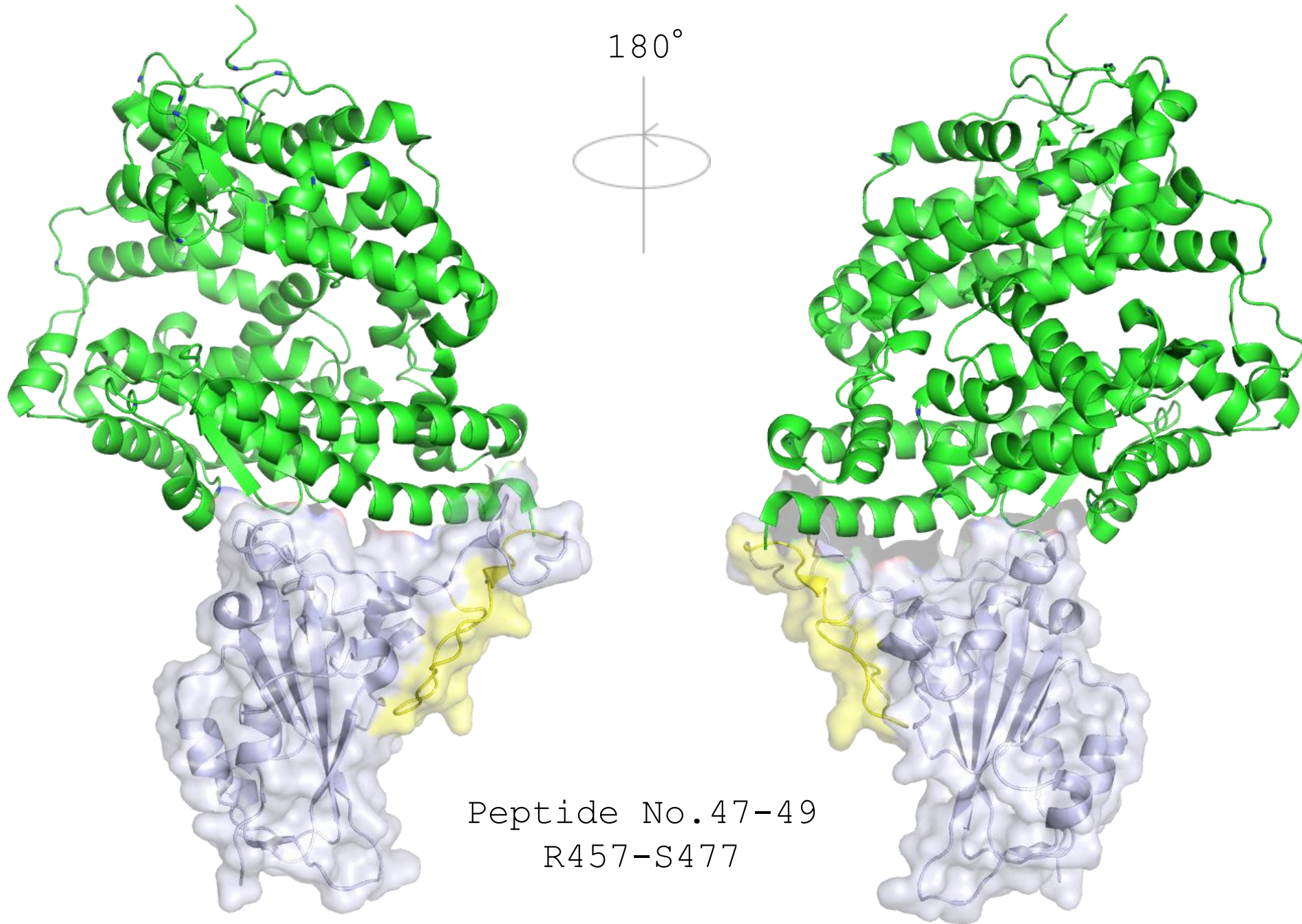
Peptide array

a**b****c**

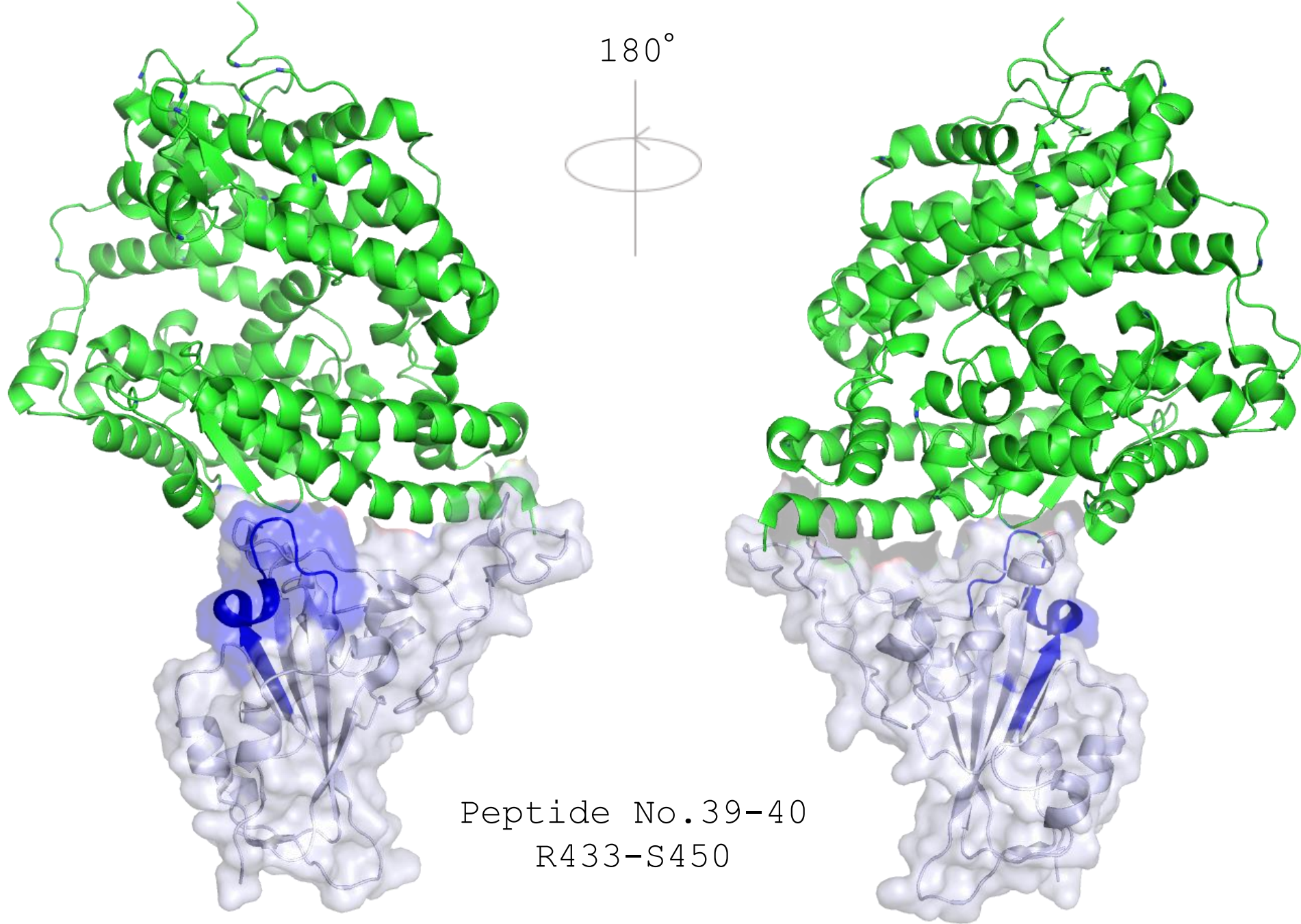
a



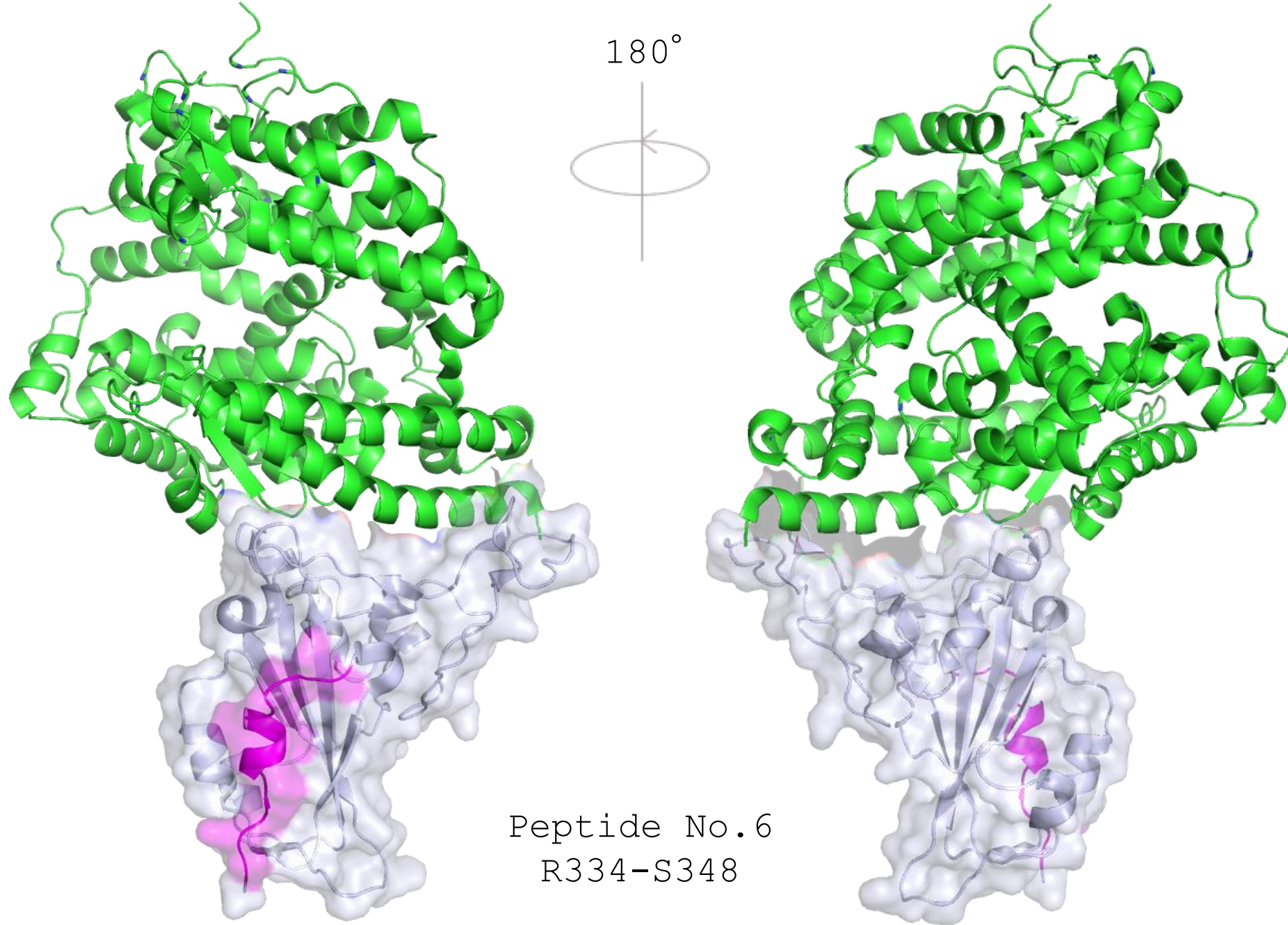
b

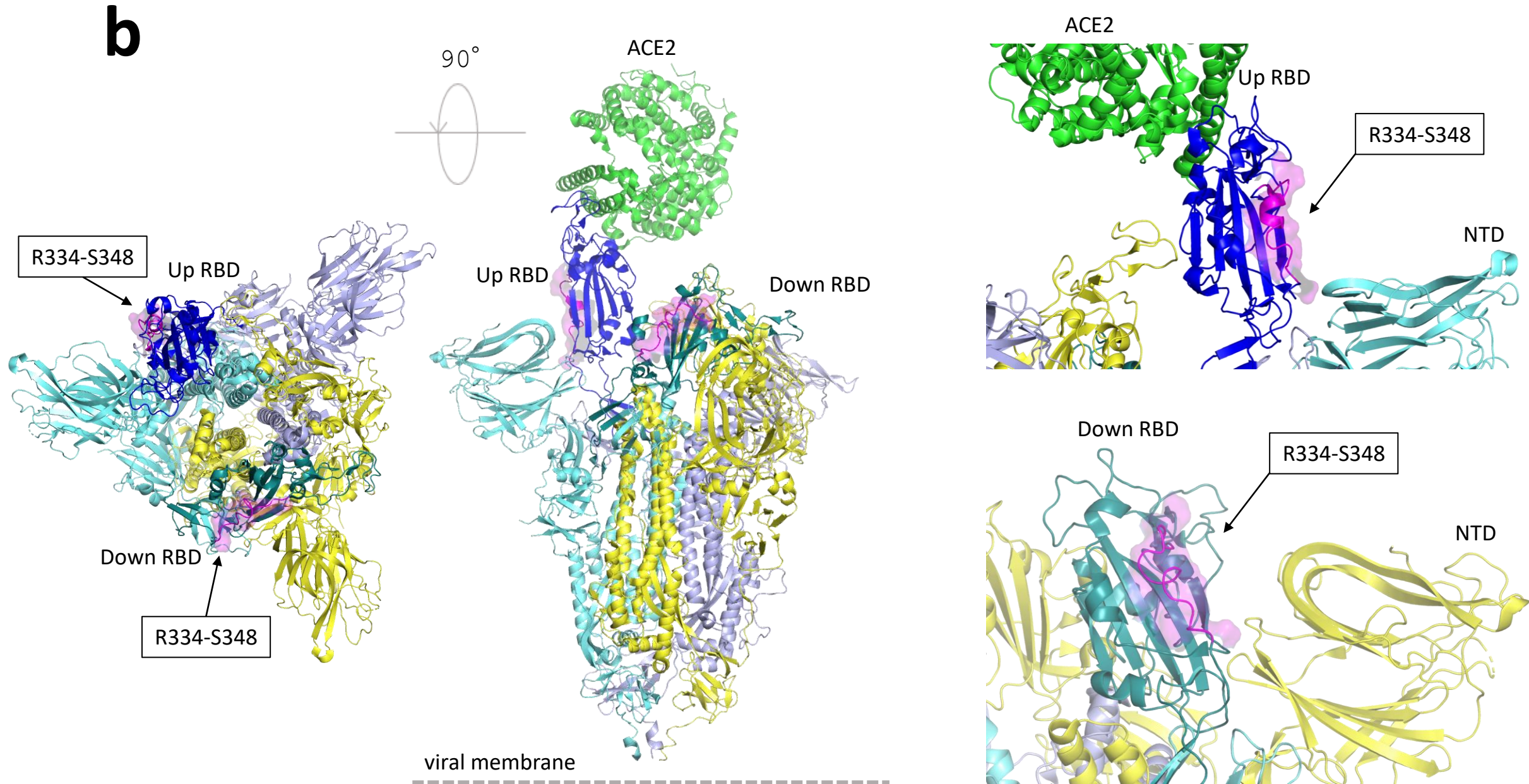


c

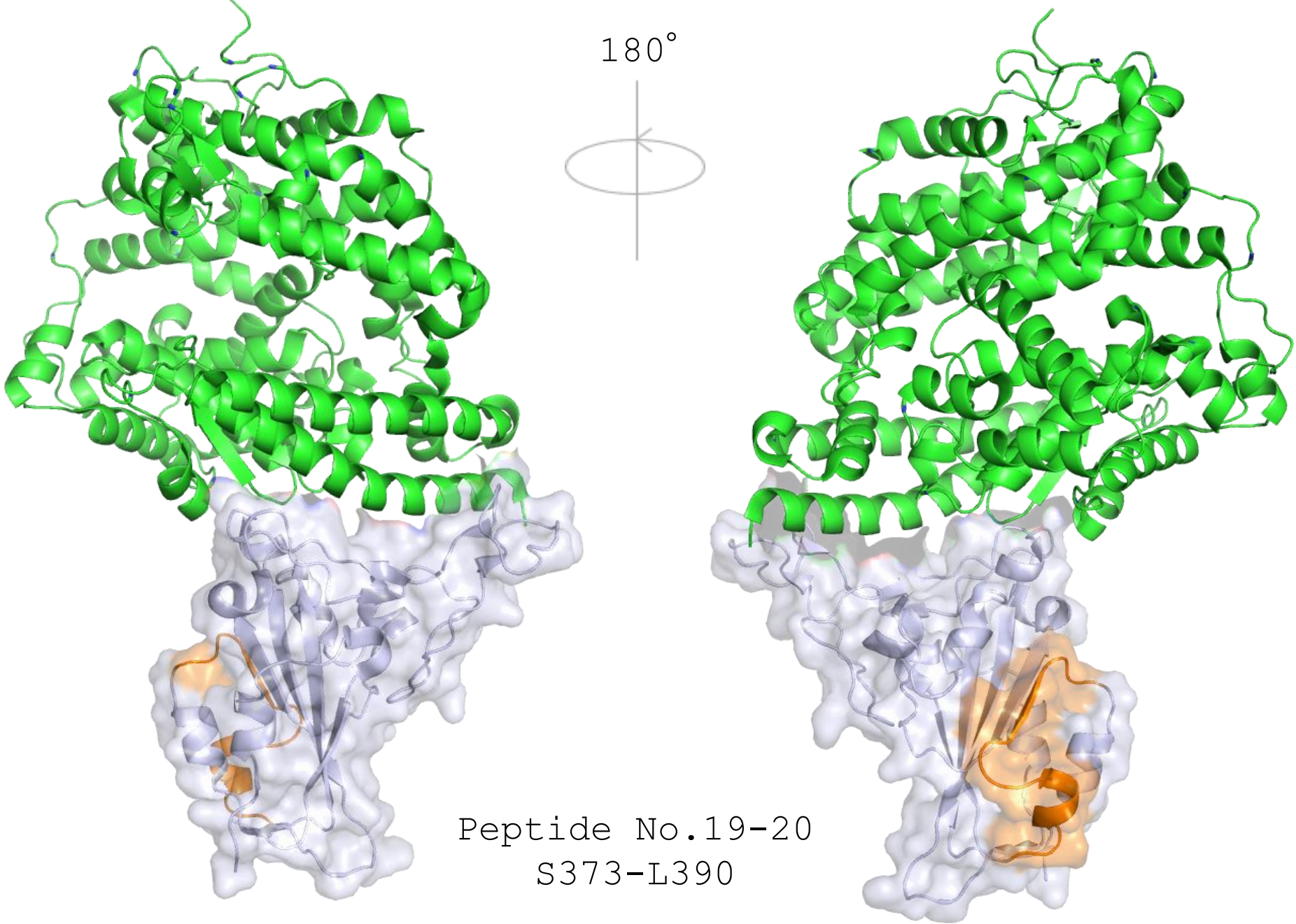


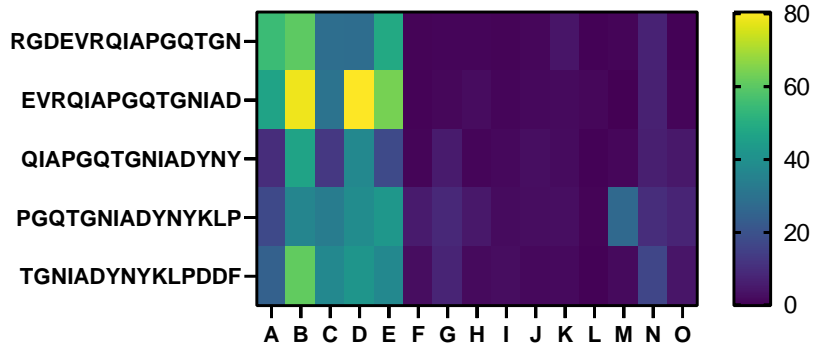
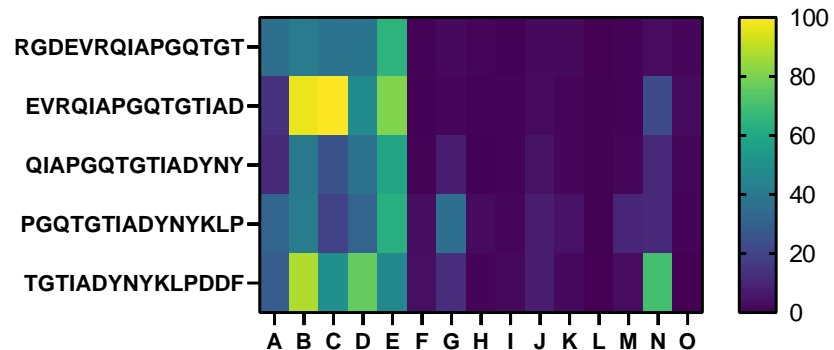
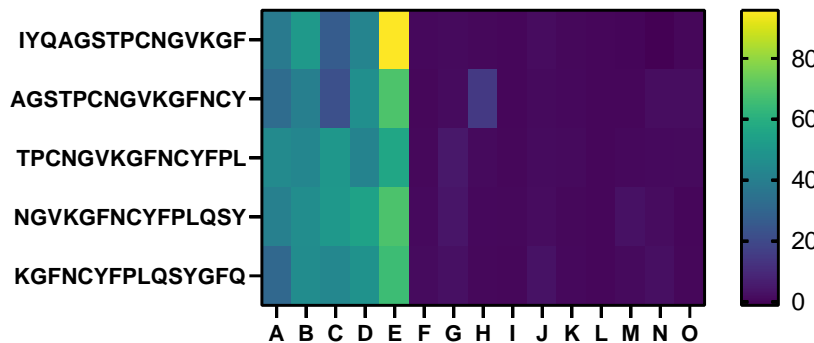
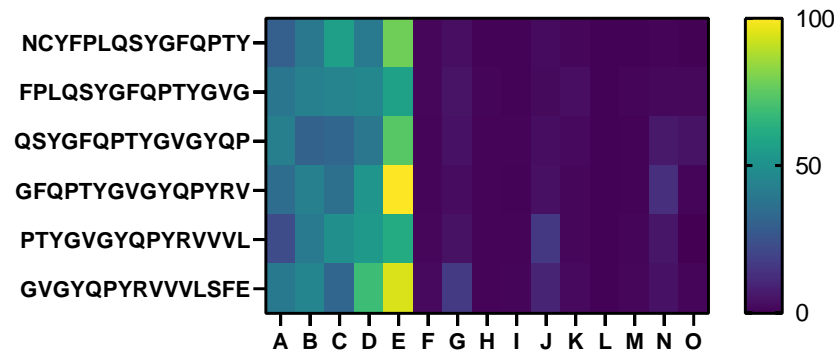
a

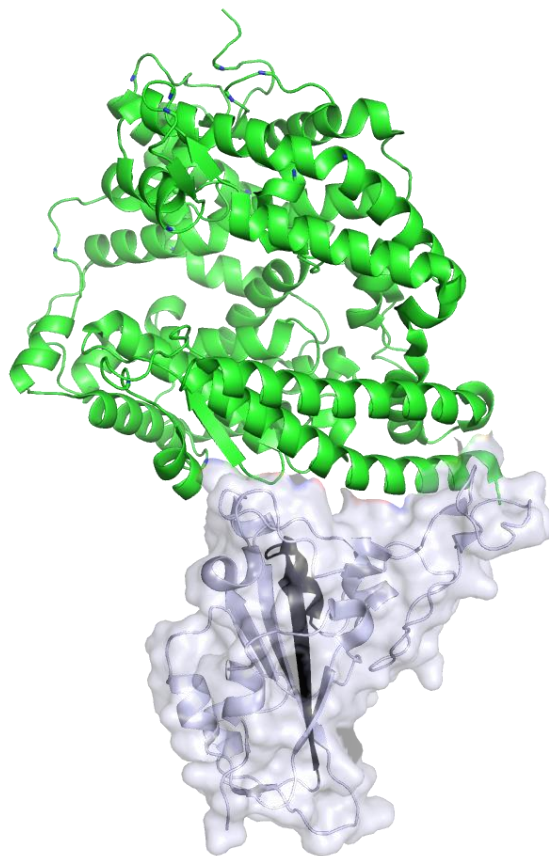


b

c



K417N**K417T****E484K****N501Y**



Peptide No.27
A397-A411

