

High frequency transmission, asymptomatic shedding, and airborne spread of *Streptococcus pyogenes* among schoolchildren exposed to scarlet fever: a longitudinal multi-cohort molecular-epidemiological contact tracing study.

Rebecca Cordery¹, Amrit Purba¹, Lipi Begum¹, Ewurabena Mills², Mia Mosavie^{2,3}, Ana Vieira^{2,3,4}, Elita Jauneikaite^{3,4,5}, Rhoda CY Leung², Derren Ready^{6,7}, Peter Hoffman⁶, Theresa Lamagni^{3,6}, Shiranee Sriskandan^{2,3,4}

1 London Health Protection Teams, Public Health England, London, United Kingdom,

2 Department of Infectious Disease, Imperial College London, United Kingdom

3 NIHR Health Protection Research Unit in Healthcare Associated Infections and Antimicrobial Resistance, Imperial College London, United Kingdom

4 MRC Centre for Molecular Bacteriology & Infection, Imperial College London, United Kingdom.

5 Department of Infectious Disease Epidemiology, School of Public Health, Imperial College London, United Kingdom.

6 National Infection Service, Public Health England, United Kingdom

7 NIHR Health Protection Research Unit in Behavioural Science and Evaluation at the University of Bristol, Bristol, UK

Author for correspondence:

Shiranee Sriskandan, Section of Adult Infectious Disease, Department of Infectious Disease, Imperial College London, Hammersmith Campus, London W12 0NN, UK

Abstract

Background: Despite recommendations regarding prompt treatment of cases and enhanced hygiene measures, scarlet fever outbreaks increased in England between 2014-2018.

Methods: We undertook a prospective, intensive contact tracing study in schools with consecutive scarlet fever cases to assess the impact of standard interventions on transmission of *Streptococcus pyogenes* between cases, classroom contacts, households, and classroom environments over 4 weeks using genome sequencing.

Findings: Six classes, comprising 12 scarlet fever cases, 17 household contacts, and 278 classroom contacts were recruited. Prevalence of the outbreak strain in asymptomatic classroom contacts was high, increasing from 9.6% in week 1, to 26.9% in week 2, 23.9% in week 3, then 14.3% in week 4. Colonisation with non-outbreak strains was 0 - 7.5%. Genome sequencing showed clonality of isolates within each of six classes, confirming recent transmission accounted for high carriage. Of asymptomatic classroom contacts with *S. pyogenes*-positive throat swabs who were tested for transmissibility, 6/28 (21%) had positive cough plates and/or hand swabs, of whom three remained *S. pyogenes*-positive for 3 weeks. Only 1/60 surface swabs taken in 3 classrooms yielded *S. pyogenes*. In contrast, settle plates placed in elevated locations were *S. pyogenes*-positive in both classrooms tested.

Interpretation: *S. pyogenes* transmission in schools is intense and may occur prior to, or in spite of reported treatment of cases, underlining a need for rapid case management. Despite guideline adherence, heavy shedding of *S. pyogenes* by small numbers of classroom contacts may perpetuate outbreaks, and airborne transmission has a plausible role in spread.

Funding. Action Medical Research, UKRI, NIHR

Introduction

Over the last six years, England has experienced rates of scarlet fever that are unprecedented in modern times (1, 2). Scarlet fever is a highly communicable exanthem caused by *Streptococcus pyogenes* that predominantly affects younger children. Over 30,000 cases were notified in 2018, the highest number since 1960, with an age-specific incidence of 523 per 100,000 among 1-4 year olds in England and Wales (3). Infections have long-been recognised to seed outbreaks in schools and nurseries, creating a significant public health burden (2). Though benign if treated promptly, there is a 20-fold increased risk of invasive streptococcal infection in households that include a recent case of scarlet fever (4). In 2016, the seasonal surge in scarlet fever was associated with an almost 2-fold increase in invasive disease notifications, and emergence of a new sublineage of *emm1* *S. pyogenes* (M1_{UK}) that expresses increased amounts of scarlet fever toxin (5). Controlling transmission of scarlet fever is therefore a public health priority.

The literature highlights a role for fomite surfaces in propagation of *S. pyogenes* outbreaks (6,7). Guidance for management of two or more cases of scarlet fever emphasises the importance of maintaining good hand hygiene, prompt antibiotic treatment of index cases, and exclusion from school until 24h after antibiotic treatment has started (8). Escalation of interventions including daily cleaning of toys, utensils, and frequent touch points is recommended if necessary, along with daily vacuuming of soft furnishings (8).

To understand why outbreaks might continue to occur despite following these interventions, we investigated *S. pyogenes* transmission during the scarlet fever seasons of 2018 and 2019, focussing on educational settings with two sequential notifications of scarlet fever. Our primary aim was to determine if existing guidance that focuses on hygiene, alongside case exclusion, prevented transmission of *S. pyogenes* in the classroom. Our secondary aim was to investigate modes of transmission, to inform future guidance and provide insight into *S. pyogenes* outbreaks more generally.

Methods

We conducted a prospective observational study in Greater London from March 1 2018 to May 31 2019. Confirmed and probable cases of scarlet fever were identified by notifications to local Health Protection Teams. (**Appendix p2**).

Schools and nurseries were invited to participate if they had two confirmed or probable scarlet fever cases aged 2-8 years from the same class within ten days of each other, with the most recent case arising in the preceding 48h. Routine public health advice was provided including cases being excluded from school until the case had received at least 24h of antibiotic treatment (8).

Cases were invited to participate in daily sampling as soon as possible after diagnosis and up to day 8 of treatment, followed by samples collected at weekly intervals for 3 more weeks, comprising throat swabs, hand swabs, and Columbia Blood Agar (CBA) cough plates.

Household and classroom contacts of each case were invited to participate in weekly throat swab sampling for 4 weeks, or a total of 4 occasions if the weekly cycle was interrupted by holidays. In 2019, classroom contacts were additionally asked to provide hand swabs and cough plates. Any child found to have clinical pharyngitis or scarlet fever was directed to their primary care physician for management; swab results were not reported to participants or their physicians.

Environmental swabs were obtained from 20 frequently-touched items including toys and equipment in each classroom in 2018 (**Appendix p20**). In 2019, to sample classroom air, CBA settle plates were positioned in each classroom at heights of ~1.5-2m for 2-3h.

After overnight culture of samples on CBA, DNA was extracted from any *S. pyogenes* identified and *emm* genotyping performed, followed by genome sequencing, as detailed (**Appendix p20**). Genome sequences were compared with *S. pyogenes* sequences from an earlier survey of isolates associated with scarlet fever (9) (**Appendix p9-15, p20-21**); *emm1* and *emm4* lineages were assigned as reported (5, 10). Genome sequencing data are available from European Nucleotide Archive using the reference PRJEB43915.

The study protocol was approved by a Research Ethics Committee (reference 18/LO/0025; IRAS 225006). Informed consent was provided by parents or guardians, and assent provided by each child.

Role of Funding source. The funders played no role in study design, data interpretation, writing the report or decision to submit the paper for publication

Results

During the study, 156 educational outbreaks in London were reported in 2018, and 47 in 2019. Based on a pragmatic approach, the first school with 2 eligible cases that agreed to participate each month was selected. Six settings were included, and 12 cases were recruited (**Appendix, p3**). Two cases were recruited per setting in settings 1-3; setting 2 and 3 were different classes in the same school. Three cases were recruited from each of settings 4 and 6. Cases declined to participate in setting 5, although contact and environment testing was undertaken based on one confirmed and one probable case (**Appendix, p3**). During the study, participating schools reported increased prevalence of pharyngitis in addition to the reported cases of scarlet fever. The median attack rate for confirmed and probable cases was 5.1% in the settings studied. (**Appendix, p3**)

Of the scarlet fever cases, 6/12 had been swabbed by primary care physicians prior to antibiotic treatment. *S. pyogenes* genotypes associated with each outbreak were derived from the swabs obtained from these cases, or inferred from the *S. pyogenes* isolates cultured from household contacts of cases (**Figure 1**). *Emm1* isolates all belonged to the newly described M1_{UK} lineage (5), while *emm4* isolates all belonged to the M4-complete lineage (10).

Cases were visited at home during initial periods of school exclusion. All but one of the 12 cases received antibiotic treatment prescribed by the primary care physician. *S. pyogenes* was not detected in swab samples obtained during the first week, in all cases where antibiotic treatment had been initiated prior to the study visit. The child who did not receive antibiotic treatment remained throat swab positive up to and including week 2 but had cleared *emm4 S. pyogenes* by week 3 (**Table 1 and Appendix p4-5**). One contact who had a positive throat swab and cough plate on day 1 of week 1 with *emm3.93 S. pyogenes*, developed scarlet fever the same day, so was recruited as a case. Where the duration of antibiotic treatment was known (8/12 cases), 4 children completed a 10-day course, and 4 took an incomplete course (including 2 cases where a 7-day course was prescribed). Of those that had received antibiotic treatment, including those who completed a full 10-day course, the throat swab grew *S. pyogenes* in 4/12 cases (33%), either in week 2 (2 cases) or week 3 (2 cases), with the outbreak strain. One of the latter cases, carrying M1_{UK}, was also cough-plate and hand-swab positive in week 3 despite previously testing negative. (**Table 1 and Appendix p4-5**).

Seventeen household contacts were enrolled in the study, representing 9 households. Of these, 3/17 (17.6%) had throat swabs that yielded *S. pyogenes*, two of whom had symptomatic pharyngitis with M1_{UK} and demonstrated carriage spanning 2 or 3 weeks. (**Table 2 and Appendix p6**)

Classroom contacts were swabbed in school. Mean asymptomatic throat carriage of the genomically-defined outbreak *S. pyogenes* strains among participating children who had swabs rose from 9.6% in week 1; to 26.9% in week 2; to 23.9% in week 3; and 14.3% in week 4. This fell to 11.3%, then 0% in classes where delayed swabbing was undertaken. (**Table 3**). In contrast to carriage of the outbreak strain, median carriage of non-outbreak *S. pyogenes* was 3.9% (range 0-7.5%) during the study (**Table 3**). Transmission appeared particularly intense in setting 2, where 44.4% of children swabbed were infected with the outbreak M1_{UK} strain in week 2, in addition to the two household contacts (**Figure 2**). Overall, across all six settings, more than half of eligible children participated in the study (mean participation rate 54.5%, range 38.9%-75.8%). (**Appendix p7**).

Whole genome sequencing was undertaken on all *S. pyogenes* isolates identified during the study. Within each setting, isolates of the same genotype were clonal, with individual strains being a median of 0 SNPs (range 0-5 SNPs) different to other strains in that setting, consistent with a common source of transmission, but a median of 12 SNPs (range 4-55 SNPs) different from the closest strain of the same genotype sequenced in 2014. Core genomes exhibited more similarity than expected. (**Figure 1 and Appendix p16-19**).

To investigate the potential role of surface contamination of fomites in transmission, environmental swabs were taken in each of 3 classrooms in week 1 of the first year of the study. Routine advice on cleaning (8) had been issued prior to environmental sampling. Swabs from settings 1-3 yielded mixed bacterial growth

($\sim 1 \times 10^2$ cfu – 1×10^4 cfu per swab). (**Appendix p8**) *S. pyogenes* was identified from just one toy (train track) from setting 2; 5 colonies/swab of the outbreak strain emm1 (M1_{UK}) were 1-3 SNPs different to isolates obtained from children in the same class (**Appendix p17**).

To determine the source of ongoing transmission in the classrooms, the protocol was amended in year 2 (2019) to include hand-swabs and cough-plates from classroom contacts in addition to throat swabs, while CBA settle plates were used to sample air in the classroom. In setting 4, where *emm4* predominated, one of four children carrying *S. pyogenes* was cough-plate positive in the second week, but not in subsequent weeks; all isolates in this setting were 0 SNP apart. Cough-plates were negative in setting 5 (also *emm4* where again isolates were 0 SNP apart) (**Appendix p18**). In setting 6, where *emm3.93 S. pyogenes* dominated, cough-plates were positive for the outbreak *emm3.93* strain in a quarter of children who had positive throat swabs (week 1, 2/7; week 2, 3/12, week 3, 2/9). (**Figure 3**) The vast majority of strains were 0 SNP different from one another, bar three strains that were 1, 2, and 5 SNP apart (**Appendix p19**). SNPs differentiating strains within each outbreak are listed (**Appendix p9**).

To compare the prevalence of *S. pyogenes* carriage during the peak outbreak period with prevalence of carriage ~ 3 months later, the protocol was amended to incorporate a 'break' in the weekly sampling schedule in year 2. In setting 4, where prevalence of the outbreak *emm4 S. pyogenes* had been 0%, 20%, and 16.6% in weeks 1- 3 respectively, final samples from classroom contacts were taken in week 16, and all were negative. It was only possible to incorporate a 4-week gap for settings 5 and 6 for logistic reasons related to the timing of the school term. In setting 5, carriage of the outbreak *emm4* strain remained steady throughout the study, with a prevalence of 0, 13.6%, 13.6% in weeks 1-3 respectively and 12.5% at week 7. Notably 2/3 of *emm4* carriers who were positive in week 7 had also been positive in week 3. In setting 6, where prevalence of *emm3.93 S. pyogenes* in weeks 1, 2, and 3 was 25%, 35.3%, 29% respectively in asymptomatic classroom contacts, carriage fell to 16.7% (5/30) by week 8. Of these, 4/5 strains carried were the outbreak *emm3.93* strain. (**Figure 3**) Notably in this outbreak, throat swabs from two of the cases and a single household contact were positive in week 3, *emm3.93* (**Table 3**).

Four settle plates were used per classroom to sample room air, sited above child head height (1.5m-2m). A pilot study in setting 4 revealed that plates left for 24h were overgrown and un-readable. Therefore, for settings 5 and 6, settle plates were left for ~ 2 -3h while children were using the classroom. In setting 5, one of four settle plates (placed above a whiteboard) was positive for *S. pyogenes* in weeks 2 and 3 of the study (**Table 4**). In setting 6, two of four settle plates were positive for *S. pyogenes* in weeks 1, 2, and 3 of the study, including plates placed at a height of ~ 2 m, on top of cupboards. In both settings, *S. pyogenes* strains on settle plates were identical to strains identified in children (*emm4* and *emm3.93*), consistent with the outbreak strain being dispersed into the air (**Appendix p18-19**).

Discussion

This prospective contact tracing study of *S. pyogenes* transmission was undertaken in response to an unprecedented rise in scarlet fever notifications in England. Using genome sequencing to confirm common sources of transmission, we found a high prevalence of the outbreak strain among asymptomatic classroom contacts, peaking in the second week of our investigations. Transmission had occurred in the presence of antibiotic treatment and exclusion of index cases, and regardless of implementation of standard hygiene measures within the classrooms. Enhanced sampling in year 2 revealed evidence of prominent *S. pyogenes* shedding by some children, and airborne dispersal of genomically identical strains in the classroom.

In the six settings investigated, *emm1* (M1_{UK}) strains were involved in two outbreaks, *emm4* in two outbreaks, and *emm3.93* and *emm6* strains were involved in one outbreak each. New scarlet fever-causing lineages have been associated with national upsurges in invasive *S. pyogenes* (5, 11), exemplified by emergence of M1_{UK}, a lineage that expresses increased levels of the scarlet fever toxin SpeA (5). There are however international differences in approach to treatment of streptococcal pharyngitis (12), and transmission risks are not widely considered (13). Coupled with the public health impact of outbreaks (2), high attack rates in schools (14), and increased risk of invasive infections (4), there is a rationale to limit the spread of *S. pyogenes* in the population, particularly where lineages such as *emm1* and *emm3*, that are independently associated with high case fatality or severe manifestations (15), are involved.

Current guidance on scarlet fever management focusses on treatment, exclusion, and hygiene interventions, with escalation to include daily cleaning of surfaces (8). Although contamination of fomites including toys is no doubt important, we found that transmission was ongoing despite such cleaning and in the absence of frequent surface *S. pyogenes* contamination. Indeed, the main source of *S. pyogenes* appeared to be the children themselves. Other than foodborne scarlet fever outbreaks (16), there are remarkably few recent investigations that examine transmission routes. Four contemporary reports describe scarlet fever outbreaks with high attack rates (23-72%) in educational settings that were not controlled by standard interventions (17-20); transmission routes were investigated in just one (17). Three describe use of antibiotic treatment to end the outbreaks, treating all colonised children (17-19). Microbiological detection of *S. pyogenes* to enable treatment of children found to be colonised would however be challenging to undertake routinely for all scarlet fever outbreaks. Our study underlines a need for research to evaluate a potential role for molecular point of care tests for rapid detection of colonisation and outbreak management.

By week 3, prevalence of the genomically-confirmed outbreak strain was 14-47% across the six settings, while carriage of non-outbreak strains was infrequent. These carriage rates are remarkably similar to data from higher attack rate outbreaks (17-20) and studies from the pre-antibiotic era, where 26-33% of streptococcal pharyngitis classroom contacts were observed to carry the outbreak serotype (21). Our study draws attention to the importance of context when measuring *S. pyogenes* carriage rates as, outside of the

springtime outbreak season, asymptomatic carriage in healthy children in England is estimated to be just 0 - 5.9% (22) in contrast to the prevalence detected during the settings described herein. In healthy adults, in England, asymptomatic carriage of *S. pyogenes* is also reportedly low (~0.45%) but can also rise to 17% in an outbreak setting (23). Studies that report average annual rates of asymptomatic carriage therefore fail to recognise the very major impact of seasonal variation and outbreaks and may provide misleading contextual information when providing recommendations.

We frequently recovered the outbreak strain among classroom contacts in week 1 of sampling, indicating that transmission had already occurred in the classroom, whether from one of the index cases of scarlet fever or another unknown source. It is possible that treatment may have been delayed in some cases: Enhanced surveillance suggests one fifth of scarlet fever cases may be initially diagnosed as a viral infection, allowing transmission to continue if the affected child remains in school, untreated (24). Whether this is sufficient to explain scarlet fever outbreaks merits further analysis and modelling. In our study, once scarlet fever cases were recognised, all but one child received antibiotics and remained isolated for at least 24h of antibiotic treatment. We found no evidence of continued infection or carriage in weeks 1 or 2 in cases who received antibiotics.

It is generally believed that asymptomatic carriage is unlikely to lead to transmission, although the term 'carrier' is more often used to refer to a case that has been treated for *S. pyogenes* pharyngitis but demonstrates microbiological failure (25). In our study, the systematic increase in prevalence of outbreak strains between weeks 1 and 2 in classroom contacts pointed to ongoing transmission from asymptomatic carriers, despite index cases having been excluded and treated. Indeed, after returning to school, four cases re-acquired the outbreak strain in week 3, presumably through contact with other colonised contacts or classroom air, although did not develop symptomatic illness; these cases re-acquired *emm1* (M1_{UK}, 2 cases) and *emm3.93* (2 cases). Our investigations using cough plates and hand swabs demonstrated that up to 40% of asymptomatic carriers were shedding more *S. pyogenes* than other children in exhaled cough and on hands. These findings raise a question about the definition of colonisation and infection in young children, who may not be able to identify their symptoms, or may be infectious without symptoms. The study confirms the existence of so-called heavy shedders among those who are apparently asymptomatic at the time of sampling.

Settle plates placed in elevated locations for just 2-3 hours, provided evidence of *S. pyogenes* dispersal in classroom air in settings 5 and 6; the timing of settle plate positivity coincided with more intense periods of asymptomatic shedding. Settle plates provide an easy read out in an outbreak setting and could be used to indicate a need for improved ventilation, social distancing, or surveillance for heavy shedders. Airborne spread of scarlet fever-causing streptococci was recognised as a threat in hospitals in the 1930's (26) but the focus for control of *S. pyogenes* outbreaks in modern times has largely focussed on the role of fomite spread and the importance of hygiene (6-8). Contemporary outbreaks of *S. pyogenes* that are not explained

by direct contact alone suggest a need to take not only indirect contact but also airborne transmission into consideration when developing guidelines.

The classroom setting has provided an unexpected human model for *S. pyogenes* infection. Children of the same age were exposed to a presumed similar inoculum of *S. pyogenes* in class, yet only ~5% developed scarlet fever, some of whom re-acquired the outbreak strain without illness three weeks later, while some anecdotally developed pharyngitis. Others were found to asymptotically shed *S. pyogenes* for several weeks, while others showed transient colonisation, or no infection whatsoever. Our understanding of immunity to *S. pyogenes* is heavily dominated by factors that influence susceptibility to invasive disease. The findings highlight a gap in our knowledge regarding mucosal immunity to *S. pyogenes*, specifically whether full immunity requires antibodies to prevent streptococcal adherence, promote bacterial clearance, and inhibit streptococcal virulence factors during pharyngitis. This is potentially critical to vaccine development. Coupled with differences in host genetic susceptibility and oral microbiota, differing layers of immunity could go some way to explain why children express a range of disease phenotypes.

There are limitations to our study. Sampling of fomites was limited to single timepoints in year 1, while settle plates to sample air were only used in year 2, restricting ability to determine the relative importance of each transmission route. Our study was based in London, so findings may not be relevant to rural, or low- and middle-income settings. Upsurges in scarlet fever have been described in other temperate regions, such as China (27), where transmission may be influenced by climate or pollution. Furthermore, transmission intensity may be seasonal; we attempted to sample outside of the main scarlet fever season, but schools were unwilling to participate. Indeed, engagement was high when anxiety about scarlet fever was greatest.

The study has demonstrated that heavy asymptomatic shedding by a proportion of children may account for persistence of *S. pyogenes* outbreaks in classroom settings. The phenomenon of super-shedders and super-spreaders is increasingly recognised as a source of heterogeneity in infectious disease modelling (28,29) and is consistent with the explosive nature of some streptococcal outbreaks. Relevance to other respiratory infections is unclear. Our findings may explain the periodic failure of interventions focussed on hygiene alone to curtail outbreaks of *S. pyogenes*, both in the classroom and other institutional settings. The recognition of heavy asymptomatic shedding highlights a potential role for social distancing, improved respiratory hygiene, and better ventilation in reducing *S. pyogenes* transmission during outbreaks. As an unforeseen consequence of the COVID-19 pandemic, implementation of these measures has proven highly successful in halting England's scarlet fever upsurge, at least in 2020 (30), highlighting a need for better understanding of transmission routes in preventing future upsurges.

Declaration of interests. The authors declare no competing interests

Funding

Action Medical Research (GN2596); UKRI, Medical Research Council (MR/P022669/1); NIHR Health Protection Research Unit in Healthcare-associated Infection and AMR; NIHR Imperial College Biomedical Research Centre (BRC).

Acknowledgements The authors would like to acknowledge the support of the schools, nurseries, and staff, as well as the many children and households who participated in this study, and the support of London Health Protection Teams in PHE. The NIHR BRC Colebrook laboratory and BRC Genomics facility are also acknowledged. EJ is a Rosetrees/Stoneygate 2017 Imperial College Research Fellow, funded by Rosetrees Trust and the Stoneygate Trust (fellowship no. M683).

Author contributions

Conceptualisation and funding acquisition SS, RC, TL; Project supervision and methodology SS; Recruitment supervision RC; data collection LB, AP, MM, EM, RCYL, DR, PH; data analysis AV, EJ; data visualisation RC, SS, AV, EJ; Original draft RC, SS; Review and editing AP, EJ, AV, PH, DR, RCYL, TL; Final manuscript all authors

References

1. Guy R, Williams C, Irvine N, Reynolds A, Coelho J, Saliba V, Thomas D, Doherty L, Chalker V, von Wissmann B, Chand M, Efstratiou A, Ramsay M, Lamagni T. Increase in scarlet fever notifications in the United Kingdom, 2013/2014. *Euro Surveill.* 2014 Mar 27;19(12):20749. doi: 10.2807/1560-7917.es2014.19.12.20749. PMID: 24698137.
2. Lamagni T, Guy R, Chand M, Henderson KL, Chalker V, Lewis J, Saliba V, Elliot AJ, Smith GE, Rushton S, Sheridan EA, Ramsay M, Johnson AP. Resurgence of scarlet fever in England, 2014-16: a population-based surveillance. *Lancet. Infectious Diseases*, 27 Nov 2017, 18(2):180-187. DOI: 10.1016/s1473-3099(17)30693-x. PMID: 29191628
3. Public Health England, Group A streptococcal infections: first report of seasonal activity, 2018/19 Health Protection Report Volume 13 Number 8. Advanced Access report https://assets.publishing.service.gov.uk/government/uploads/system/uploads/attachment_data/file/782182/hpr0819_sf-gas.pdf. Accessed June 28 2021.
4. Watts V, Balasegaram S, Brown CS, Mathew S, Mearkle R, Ready D, Saliba V, Lamagni T. Increased Risk for Invasive Group A *Streptococcus* Disease for Household Contacts of Scarlet Fever Cases, England, 2011-2016. *Emerg Infect Dis.* 2019 Mar;25(3):529-537. doi: 10.3201/eid2503.181518. Epub 2019 Mar 17. PMID: 30602121
5. Lynskey NN, Jauneikaite E, Li HK, Zhi X, Turner CE, Mosavie M, Pearson M, Asai M, Lobkowicz L, Chow JY, Parkhill J, Lamagni T, Chalker VJ, Sriskandan S. Emergence of dominant toxigenic M1T1 *Streptococcus pyogenes* clone during increased scarlet fever activity in England: a population-based

- molecular epidemiological study. *Lancet Infect Dis.* 2019 Nov;19(11):1209-1218. doi: 10.1016/S1473-3099(19)30446-3. Epub 2019 Sep 10. PMID: 31519541.
6. Wagenvoort JH, Penders RJ, Davies BI, Lütticken R. Similar environmental survival patterns of *Streptococcus pyogenes* strains of different epidemiologic backgrounds and clinical severity. *European Journal of Clinical Microbiology & Infectious Diseases: Official Publication of the European Society of Clinical Microbiology.* 2005 Jan;24(1):65-67. DOI: 10.1007/s10096-004-1256-8.
 7. Kramer A, Schwebke I, Kampf G. How long do nosocomial pathogens persist on inanimate surfaces? A systematic review. *BMC Infect Dis.* 2006 Aug 16;6:130. doi: 10.1186/1471-2334-6-130. PMID: 16914034; PMCID: PMC1564025.
 8. Public Health England, Guidelines for the public health management of scarlet fever outbreaks in schools, nurseries and other childcare settings October 2017. https://assets.publishing.service.gov.uk/government/uploads/system/uploads/attachment_data/file/771139/Guidelines_for_the_public_health_management_of_scarlet_fever_outbreaks_.pdf. Accessed June 28 2021.
 9. Chalker V, Jironkin A, Coelho J, Al-Shahib A, Platt S, Kapatai G, Daniel R, Dhimi C, Laranjeira M, Chambers T, Guy R, Lamagni T, Harrison T, Chand M, Johnson AP, Underwood A. Scarlet Fever Incident Management Team. Genome analysis following a national increase in Scarlet Fever in England 2014. *BMC Genomics.* 2017 Mar 10;18(1):224. doi: 10.1186/s12864-017-3603-z. PMID: 28283023; PMCID: PMC5345146
 10. Remington A, Haywood S, Edgar J, Green LR, de Silva T, Turner CE. Cryptic prophages within a *Streptococcus pyogenes* genotype *emm4* lineage. *Microb Genom.* 2021 Jan;7(1). doi: 10.1099/mgen.0.000482. Epub 2020 Nov 27. PMID: 33245690.
 11. Al-Shahib A, Underwood A, Afshar B, et al. Emergence of a novel lineage containing a prophage in *emm/M3* group A *Streptococcus* associated with upsurge in invasive disease in the UK [published correction appears in *Microb Genom.* 2016 Nov 30;2(11):e000097]. *Microb Genom.* 2016;2(6):e000059. Published 2016 Jun 24. doi:10.1099/mgen.0.000059
 12. Matthys J, De Meyere M, van Driel ML, De Sutter A. Differences among international pharyngitis guidelines: not just academic. *Ann Fam Med.* 2007 Sep-Oct;5(5):436-43. doi: 10.1370/afm.741. PMID: 17893386; PMCID: PMC2000301.
 13. National Institute for Clinical Excellence (NICE) Respiratory tract infections –antibiotic prescribing. Prescribing of antibiotics for self-limiting respiratory tract infections in adults and children in primary care 2008. <https://www.nice.org.uk/guidance/cg69/evidence/full-guideline-pdf-196853293>. Accessed June 28 2021.
 14. Ryu S, Chun BC< Invstigation of Scarlet fever outbreak in a Kindergarten, *Infect Chemother*, 2018 Mar;50(1):38-42 doi: 10.3947/ic.2018.50.1.38
 15. Nelson GE, Pondo T, Toews KA, Farley MM, Lindegren ML, Lynfield R, Aragon D, Zansky SM, Watt JP, Cieslak PR, Angeles K, Harrison LH, Petit S, Beall B, Van Beneden CA. Epidemiology of Invasive Group A Streptococcal Infections in the United States, 2005-2012. *Clin Infect Dis.* 2016 Aug

- 15;63(4):478-86. doi: 10.1093/cid/ciw248. Epub 2016 Apr 22. PMID: 27105747; PMCID: PMC5776658.
16. Yang SG, Dong HJ, Li FR, Xie SY, Cao HC, Xia SC, Yu Z, Li LJ. Report and analysis of a scarlet fever outbreak among adults through food-borne transmission in China. *J Infect.* 2007 Nov;55(5):419-24. doi: 10.1016/j.jinf.2007.07.011. Epub 2007 Aug 27. PMID: 17719644
17. Falck G, Kjellander J. Outbreak of group A streptococcal infection in a day-care center. *Pediatr Infect Dis J.* 1992 Nov;11(11):914-9. doi: 10.1097/00006454-199211110-00002. PMID: 1454431.
18. Feeney KT, Dowse GK, Keil AD, Mackaay C, McLellan D. Epidemiological features and control of an outbreak of scarlet fever in a Perth primary school. *Commun Dis Intell Q Rep.* 2005;29(4):386-90. PMID: 16465930.
19. Hoebe CJ, Wagenvoort JH, Schellekens JF. Een epidemie van roodvonk, impetigo en faryngitis veroorzaakt door dezelfde *Streptococcus pyogenes* type T4M4 op een basisschool [An outbreak of scarlet fever, impetigo and pharyngitis caused by the same *Streptococcus pyogenes* type T4M4 in a primary school]. *Ned Tijdschr Geneeskd.* 2000 Nov 4;144(45):2148-52. Dutch. PMID: 11086489.
20. Lamden KH. An outbreak of scarlet fever in a primary school. *Arch Dis Child.* 2011 Apr;96(4):394-7. doi: 10.1136/adc.2010.189944. Epub 2010 Nov 10. PMID: 21068078.
21. Glover JA, Griffith F. Acute tonsillitis and some of its sequels: epidemiological and bacteriological observations. *Br Med J.* 1931;2(3689):521-527. doi:10.1136/bmj.2.3689.521
22. Spitzer J, Hennessy E, Neville L. High group A streptococcal carriage in the Orthodox Jewish community of north Hackney. *Br J Gen Pract.* 2001 Feb;51(463):101-5. PMID: 11217620; PMCID: PMC1313922.
23. Pearson M, Fallowfield JL, Davey T, Thorpe NM, Allsopp AJ, Shaw A, Wilson DR, Sriskandan S, Lamb LE. Asymptomatic group A Streptococcal throat carriage in Royal Marines recruits and Young Officers. *J Infect.* 2017 Jun;74(6):585-589. doi: 10.1016/j.jinf.2017.03.001. Epub 2017 Mar 23. PMID: 28344116
24. Herdman MT, Cordery R, Karo B, Purba AK, Begum L, Lamagni T, Kee C, Balasegaram S, Sriskandan S. Clinical management and impact of scarlet fever in the modern era: findings from a cross-sectional study of cases in London, 2018-2019. *MedRxiv*, <https://www.medrxiv.org/content/10.1101/2021.06.25.21259535v1.full.pdf>
25. DeMuri GP, Wald ER. The Group A Streptococcal Carrier State Reviewed: Still an Enigma. *J Pediatric Infect Dis Soc.* 2014 Dec;3(4):336-42. doi: 10.1093/jpids/piu030. Epub 2014 Apr 30. PMID: 26625454.
26. Brown WA, Allison VD. Infection of the air of scarlet-fever wards with *Streptococcus pyogenes*. *J Hyg (Lond).* 1937 Jan;37(1):1-13. doi: 10.1017/s0022172400034768. PMID: 20475359; PMCID: PMC2199405.
27. Liu Y, Chan TC, Yap LW, Luo Y, Xu W, Qin S, Zhao N, Yu Z, Geng X, Liu SL. Resurgence of scarlet fever in China: a 13-year population-based surveillance study. *Lancet Infect Dis.* 2018

Aug;18(8):903-912. doi: 10.1016/S1473-3099(18)30231-7. Epub 2018 May 29. PMID: 29858148; PMCID: PMC7185785.

28. Woolhouse M. Quantifying Transmission. *Microbiol Spectr.* 2017 Jul;5(4). doi: 10.1128/microbiolspec.MTBP-0005-2016. PMID: 28812540
29. Adam DC, Wu P, Wong JY, Lau EHY, Tsang TK, Cauchemez S, Leung GM, Cowling BJ. Clustering and superspreading potential of SARS-CoV-2 infections in Hong Kong. *Nat Med.* 2020 Nov;26(11):1714-1719. doi: 10.1038/s41591-020-1092-0. Epub 2020 Sep 17. PMID: 32943787.
30. Public Health England, Group A streptococcal infections: second report on seasonal activity in England, 2019/20 Health Protection Report Volume 14 Number 10. https://assets.publishing.service.gov.uk/government/uploads/system/uploads/attachment_data/file/887272/hpr1020_GAS-SF.pdf. Accessed June 28 2021.

Table 1. *S. pyogenes* carriage and shedding in cases of scarlet fever

Positive swabs	Pre-study [#]	Week 1 [†]			Week 2	Week 3	Week 4	Week 7-8	Week 16
		Day 1	Day 2	Day 3					
Antibiotic [§]	10/12	10/12	11/12	11/12	9/12	0/12	0/12	0/12	0/12
Throat positive	5/6	2/12	1/6	1/5	1/11	4/10	0/5	1/3	1/3
Cough positive	-	1/12	0/6	0/5	0/11	1/10	0/5	-	-
Hand positive	-	0/12	0/6	0/5	0/11	1/10	0/5	-	-

[#]Only 6 cases were swabbed by primary care physician pre-study.

[†]Children were swabbed daily in week 1, until at least 72 h antibiotic therapy was given. Day 1 indicates first day of study and first swab.

[§]One case was identified in a contact at start of study so started antibiotics after first swab. One case received no antibiotics.

Final week of swabbing was week 4 (5 cases); week 7 (3 cases) or week 16 (3 cases).

Table 2. *S. pyogenes* outbreak strain prevalence in household contacts

Household contacts	Week 1 [#]	Week 2 [#]	Week 3 [†]	Week 4
Participant total	17	17	17	4
Swabs taken	15	16	16	2
<i>S. pyogenes</i> positive (%)	2 (13.3)	2 (12.5)	2 (12.5)	0 (0)
Outbreak strain (%)	2 (13.3)	2 (12.5)	2 (12.5)	0 (0)

[#]Weeks 1 and 2, outbreak strain M1_{UK} only;

[†]Week 3, Emm3.93, n=1; M1_{UK}, n=1

Table 3. *S. pyogenes* outbreak strain throat swab prevalence in classroom contacts

<i>S. pyogenes</i> swabs	Number of children (number with outbreak strain confirmed by WGS)					
	Week 1	Week 2	Week 3	Week 4	Week 7/8	Week 16
Setting 1	Emm6					
Swabs taken	16	13	15	15		
Positive (emm6)	3 (3)	4 (4)	7 (7)	3 (3)		
Outbreak strain %	18.75	30.7	46.7	20		
Setting 2	Emm1 (M1_{UK})					
Swabs taken	17	18	16	Hol		
Positive (emm1)	0	10 (8)	8 (6)	Hol		
Outbreak strain %	0	44.4	37.5	Hol		
Setting 3	Emm1 (M1_{UK})					
Swabs taken	19	19	Hol	20		
Positive (emm1)	2 (2)	6 (6)	Hol	2 (2)		
Outbreak strain %	10.5	31.6	Hol	10		
Setting 4	Emm4					
Swabs taken	18	20	24			18
Positive (emm4)	1 (0)	4 (4)	4 (4)			0
Outbreak strain %	0	20	16.7			0
Setting 5	Emm4					
Swabs taken	17	22	22		23	
Positive (emm 4)	0	3 (3)	4 (3)		5 (3)	
Outbreak strain %	0	13.6	13.6		13	
Setting 6	Emm3.93					
Swabs taken	28	34	32		30	
Positive (emm3.93)	7 (6)	12 (9)	10 (6)		5 (3)	
Outbreak strain %	21.4	26.5	18.75		10	
Total swabs taken	115	126	109	35	53	18
Non-outbreak strains	2	5	7	0	4	0
% non-outbreak strain +ve	1.7	3.9	6.4	0	7.5	0
Outbreak strains	11	34	26	5	6	0
% outbreak strain +ve	9.6	26.9	23.9	14.3	11.3	0

Hol, holiday. Hatched boxes, intentional pause in study. Final week of sampling was deferred to week 7 or week 16 for settings 4-6 (year 2). Detailed results in Supplementary table 3

Table 4. Air settle plate results from settings 5 and 6.

Setting	Location	Height	Week 1	Week 2	Week 3	Week 7/8
Setting 5 (emm4)	Shelf	1.5m	Neg	Neg	Neg	Neg
	Shelf	1.5m	Neg	Neg	Neg	Neg
	Shelf	1.5m	Neg	Neg	Neg	Neg
	Whiteboard top	1.5m	Neg	Emm 4	Emm 4	Neg
Setting 6 (emm3.93)	Cupboard top	2m	Emm3.93	Emm3.93	Emm3.93	Neg
	Shelf	2m	Neg	Neg	Neg	Neg
	Shelf	2m	Emm3.93	Neg	Neg	Neg
	Cupboard top	2m	Neg	Emm3.93	Emm3.93	Neg

Figure 1. Phylogenetic relationship between *S. pyogenes* isolates sequenced from cases, contacts and environment in each setting. Maximum likelihood phylogenetic tree constructed from 20,229 core SNPs (without recombination regions) extracted after mapping 136 *S. pyogenes* isolates to the complete *emm89* reference sequence (Refseq) H293 (HG316453.2, filled-in black circle). The tree was drawn in a circular layout with tips coloured based on the settings (S1-S6). The shape of the tip indicate sample sources as follows: case; classroom contact (CC); household contact (HHC); and environmental samples from settle plate (Air); or Toy. The outer rings from the inner-most to the outer-most represent the year of collection and *emm*-type of strains. The uncommon strain subtypes within an *emm*- type are indicated by *. These were *emm3.143* and *emm6.9*. For detailed analysis of each setting, see supplementary figures.

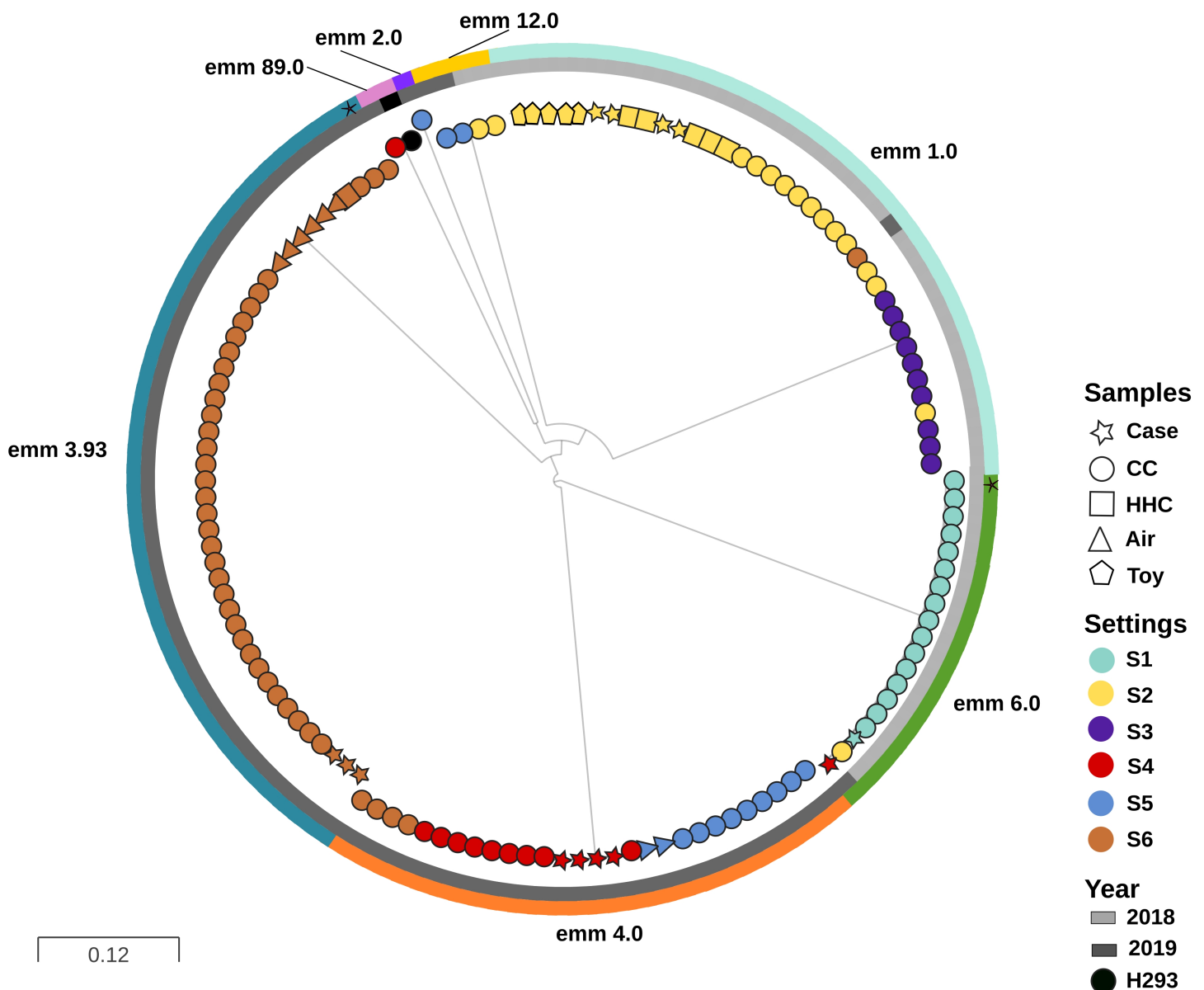
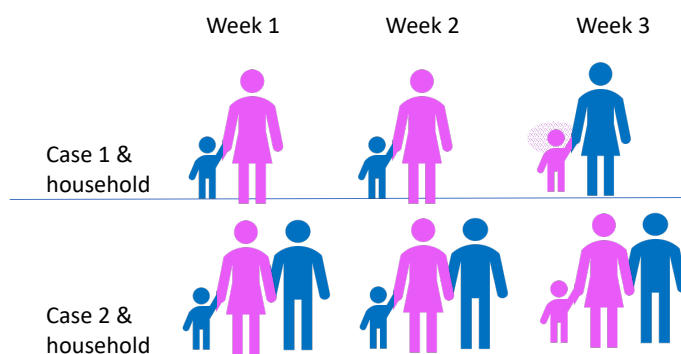


Figure 2. Transmission of *S. pyogenes* within households and classroom contacts in setting 2. (A) Weekly swab results from two cases and associated household contacts. Each row represents one subject, each column represents one week. Blue icon, negative throat swab result; pink icon, throat swab yielded *S. pyogenes*. Glow indicates cough plate and hand swab also positive. Each case had commenced antibiotic treatment prior to joining study, without prior GP swab. Household contacts had not received antibiotics but were resident with each case. Cases and household contacts were swabbed weekly for three weeks; cases were swabbed 2-3 times in week 1, result for single swab shown, representative of other swabs in same week. All *S. pyogenes* isolates were identical M1_{UK}. (B) Classroom contacts had throat swabs weekly for three weeks after identification of case; each icon represents an individual child (n=22), grouped by week of swabbing. Blue icon, negative throat swab culture; pink icon, positive swab culture (*S. pyogenes*); grey, participant not swabbed, as absent or declined. Of children swabbed, over 50% were positive in weeks 2 and 3. Overall 10/22 (45.5%) children had at least one positive throat swab at any time during the study period. 8/10 had outbreak M1_{UK} strain (1/10, emm6; 1/10, emm12). Icons do not indicate sex of participants.

A.



B.

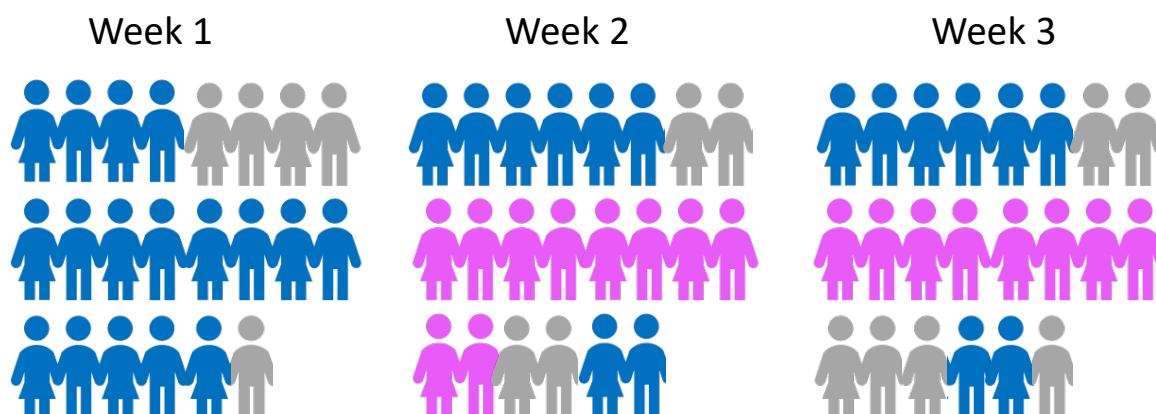
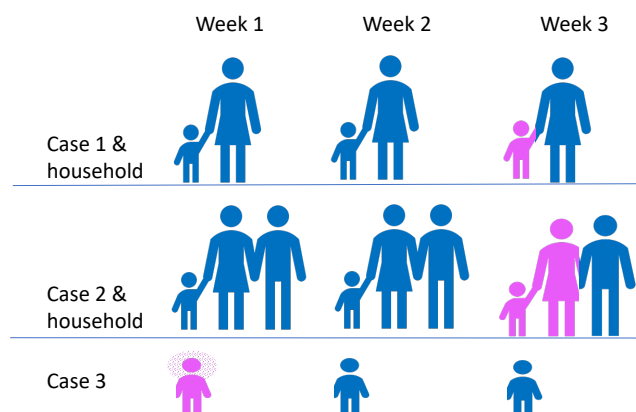


Figure 3. Transmission of *S. pyogenes* within households and classroom contacts over 3 weeks in setting 6.

(A) Weekly swab results from three cases and associated household contacts; third case recruited from contacts on day 1, though household not recruited. Each row represents one household, each column represents one week. Blue icon, negative throat swab result; pink icon, throat swab yielded *S. pyogenes*. Glow indicates cough plate positive. Cases 1 and 2 commenced antibiotic treatment prior to first swab; Case 3 commenced antibiotic treatment after first swab. Household contacts had not received antibiotics but were resident with each case. Cases and household contacts were swabbed weekly for three weeks. All *S. pyogenes* isolates were identical emm3.93.

(B) Classroom contacts had throat swabs weekly for three weeks after identification of cases 1 and 2; each icon represents an individual child (n=34), arranged by week. Blue icon, negative throat swab culture; pink icon, positive throat swab culture (*S. pyogenes*); grey, participant not swabbed as absent or declined. Glow indicates cough plate and/or hand plate positive. Of children who had swabs taken, *S. pyogenes* was identified in 25%, 35%, and 31% in weeks 1, 2, and 3 respectively. The outbreak strain emm3.93 was identified in 21.4%, 26.5%, and 18.75% of children who had swabs taken in weeks 1, 2, and 3 respectively. Fourth week not shown. Settle plates were positive for emm3.93 *S. pyogenes* in 2/4 locations in each of the three weeks. Icons do not indicate sex of participants.

A.



B.

