

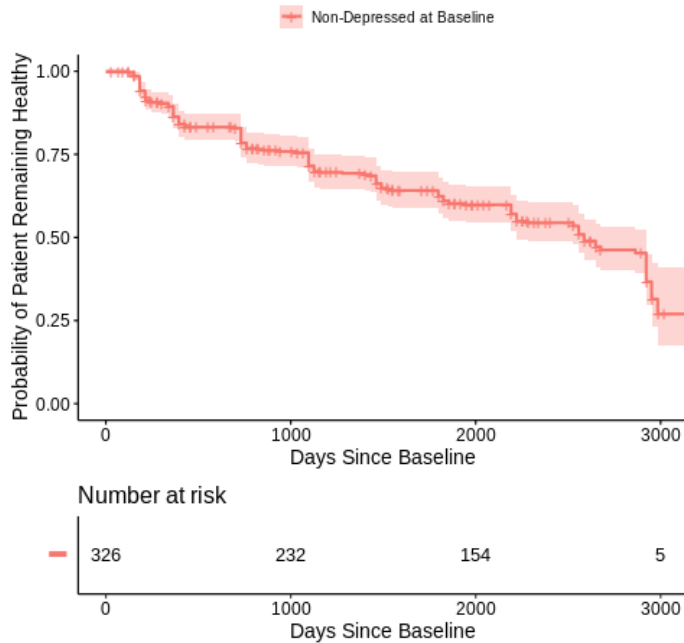
Supplemental Figure 1

Kaplan-Meier curves with number at risk tables for comparison of the depression measures used in both cohorts.

PPMI

A

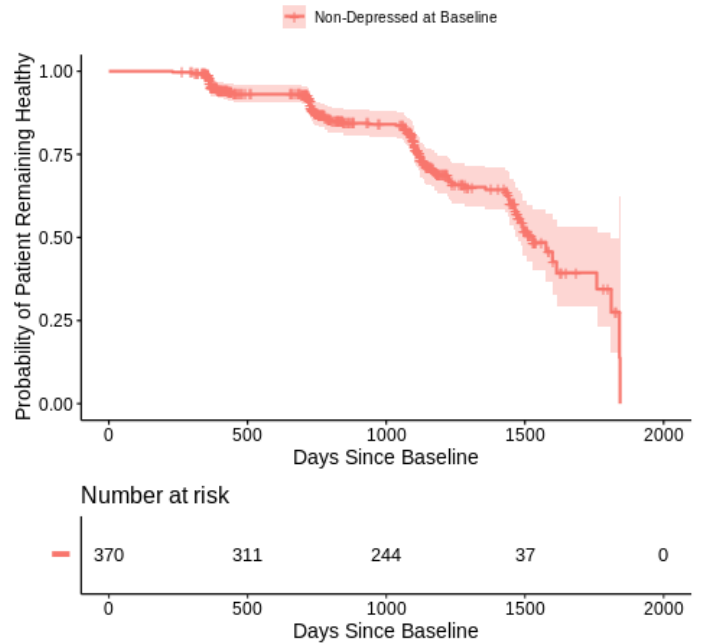
Likelihood of Patient Remaining Non-Depressed (GDS)



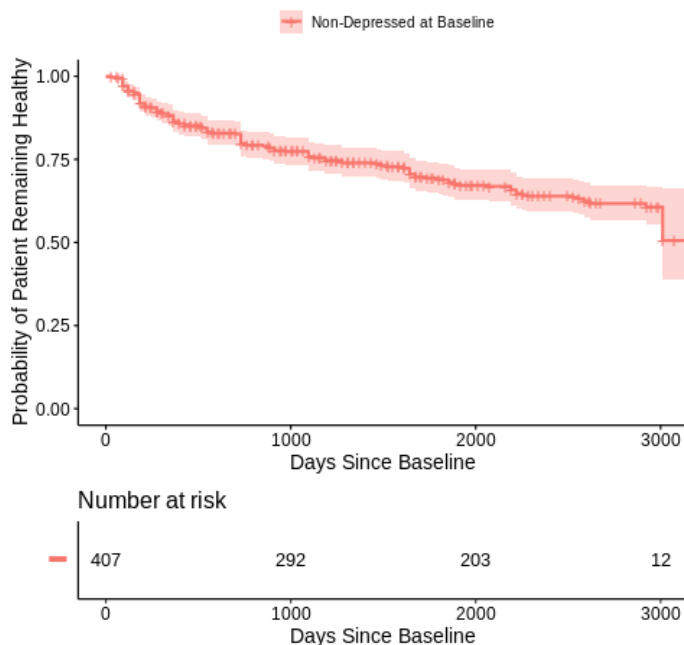
PDBP

B

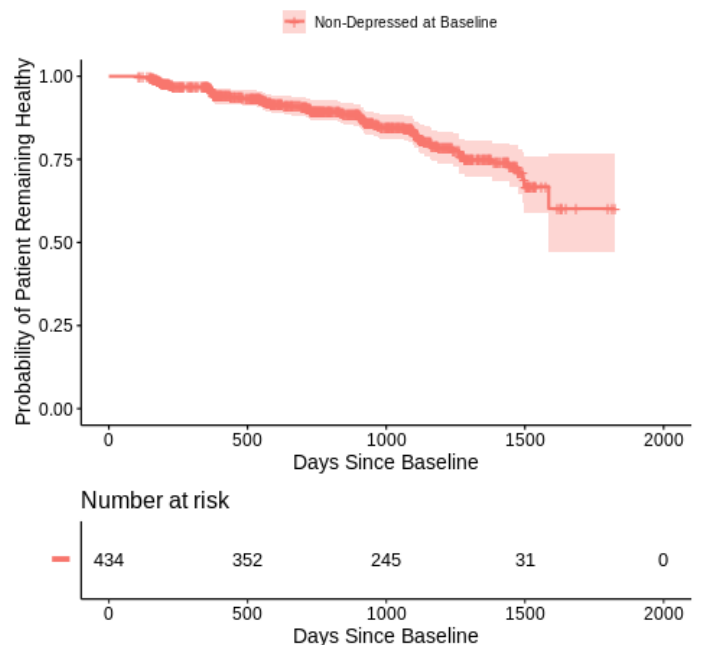
Likelihood of Patient Remaining Non-Depressed (HDRS)



Likelihood of Patient Remaining Non-Depressed (UPDRSd)



Likelihood of Patient Remaining Non-Depressed (UPDRSd)



GDS, Geriatric Depression Scale; HDRS, Hamilton Depression Rating Scale; UPDRSd, Movement Disorder Society revised Unified Parkinson's Disease Rating Scale Part I Item 3

Supplemental Table 1

Results of linear mixed effects model analyzing the linear relationship between time since baseline and scores on various measures of depressive symptoms.

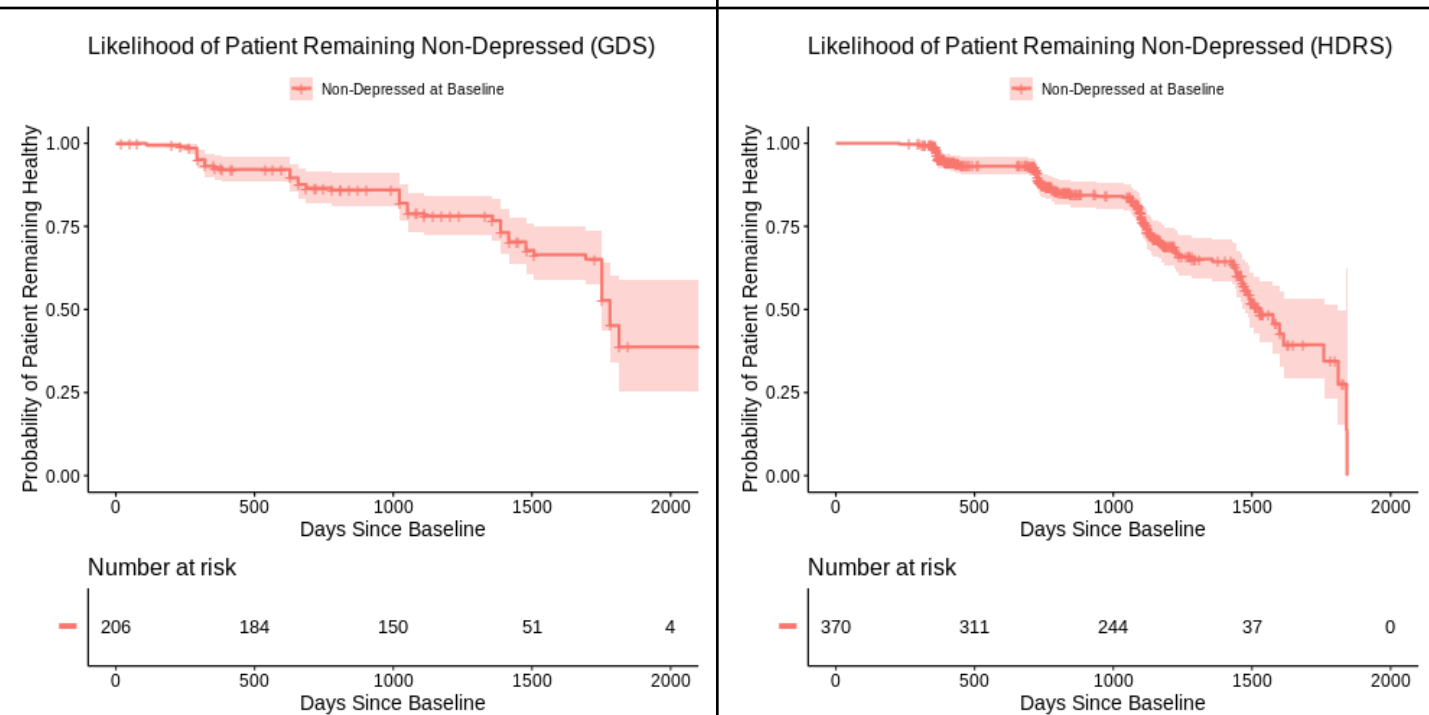
PPMI			PDBP		
Item [score range]	Estimate [95%C.I.]	p-value	Item [score range]	Estimate [95%C.I.]	p-value
GDS Total Score [0,15]	0.086 [0.067, 0.106]	<2e-16	HDRS Total Score [0,31]	0.679 [0.56, 0.80]	<2e-16
UPDRSd [0, 4]	0.026 [0.018, 0.034]	2.0e-9	UPDRSd [0,4]	0.068 [0.049, 0.087]	3.1e-12

GDS, Geriatric Depression Scale; HDRS, Hamilton Depression Rating Scale; UPDRSd, Movement Disorder Society revised Unified Parkinson's Disease Rating Scale Part I Item 3

Supplemental Figure 2

PPMI Cohort (with baseline adjusted to account for difference in median duration of diagnosis)

PDBP (with unchanged baseline)

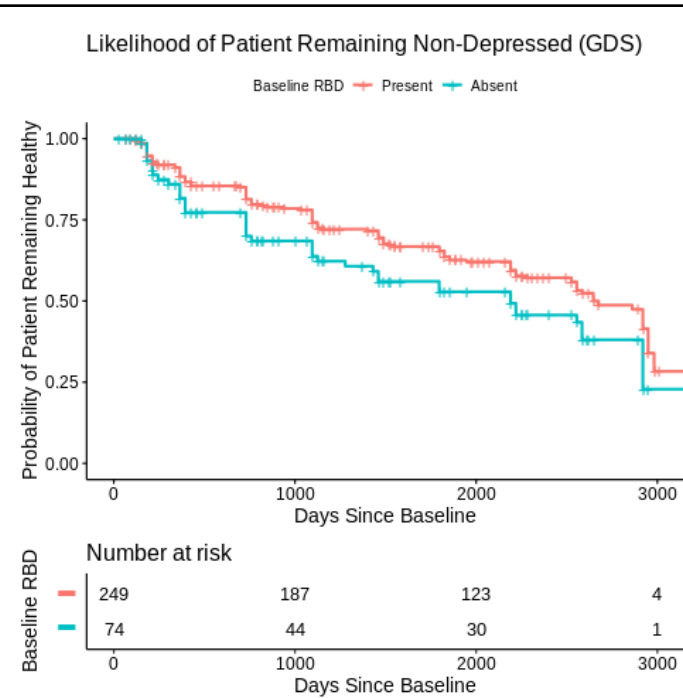


GDS, Geriatric Depression Scale; HDRS, Hamilton Depression Rating Scale

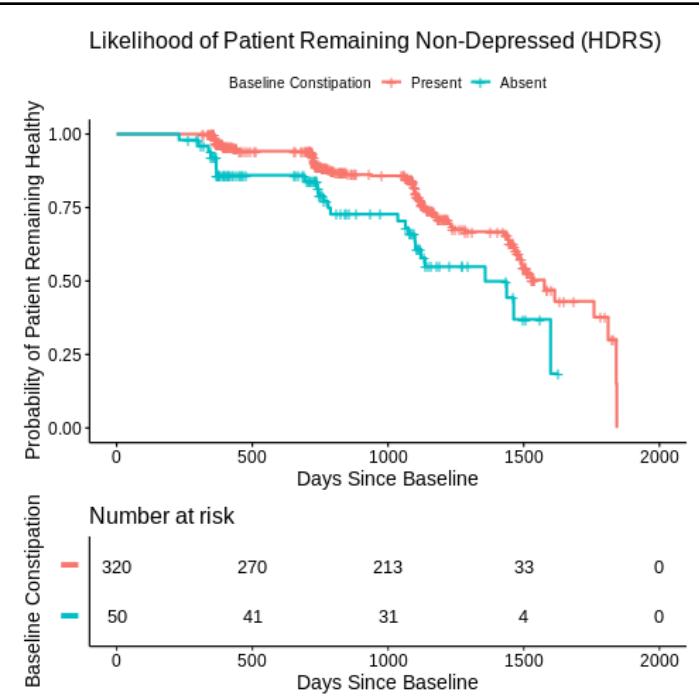
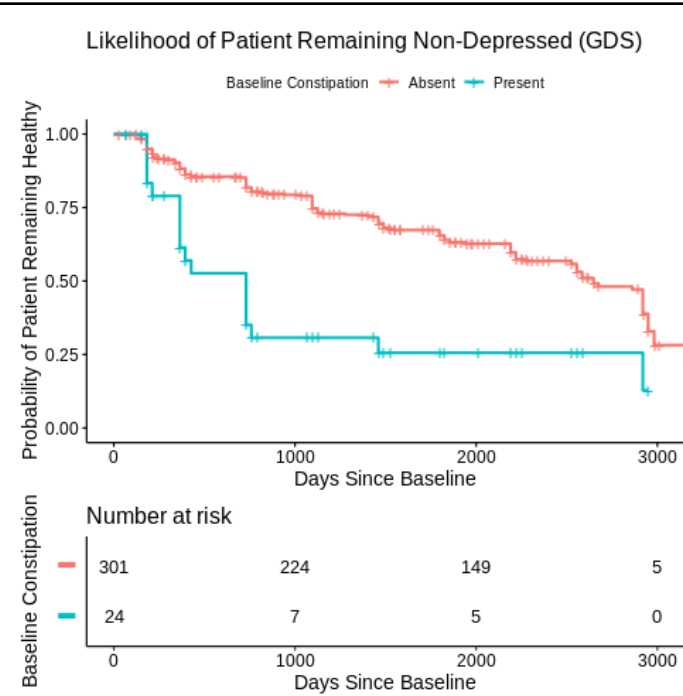
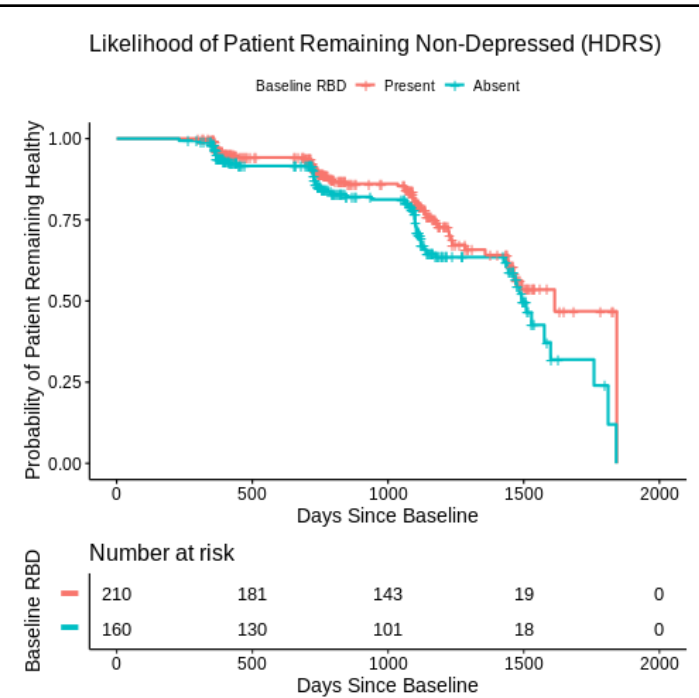
Supplemental Figure 3

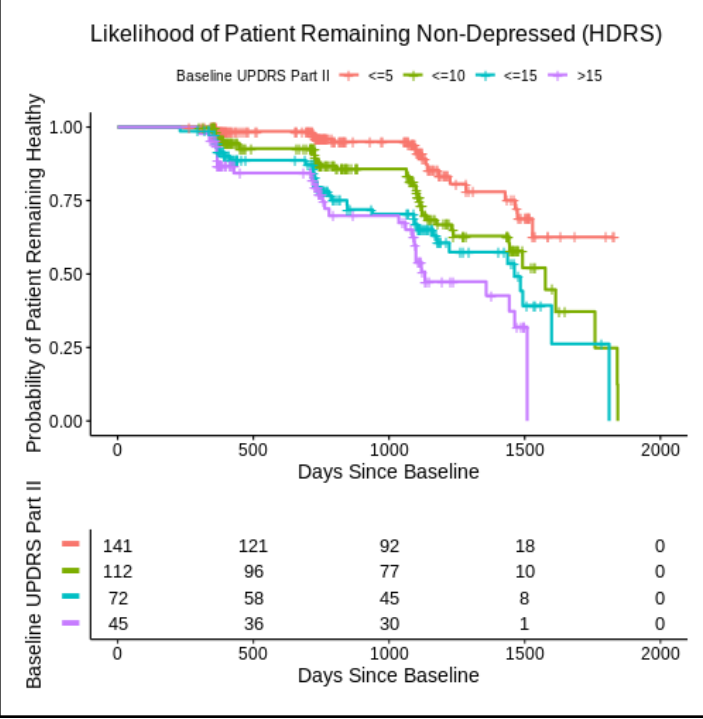
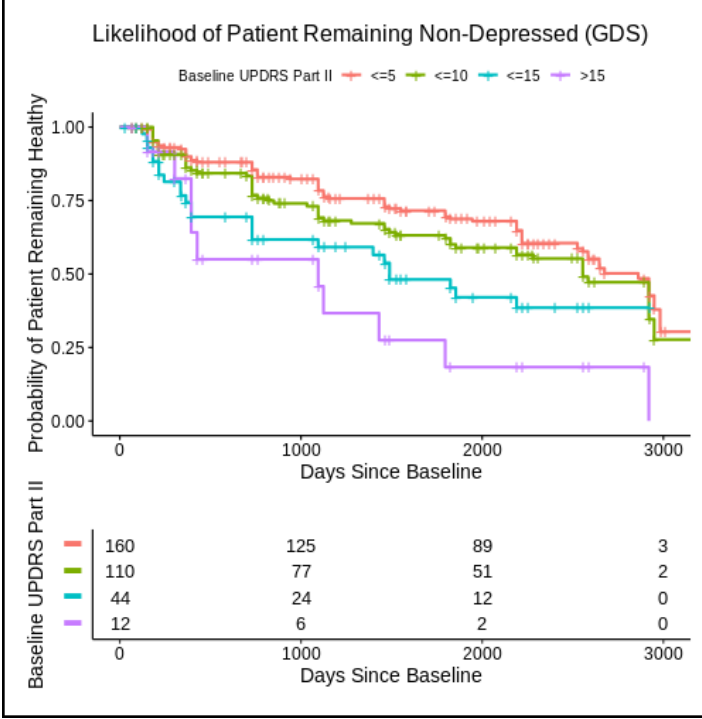
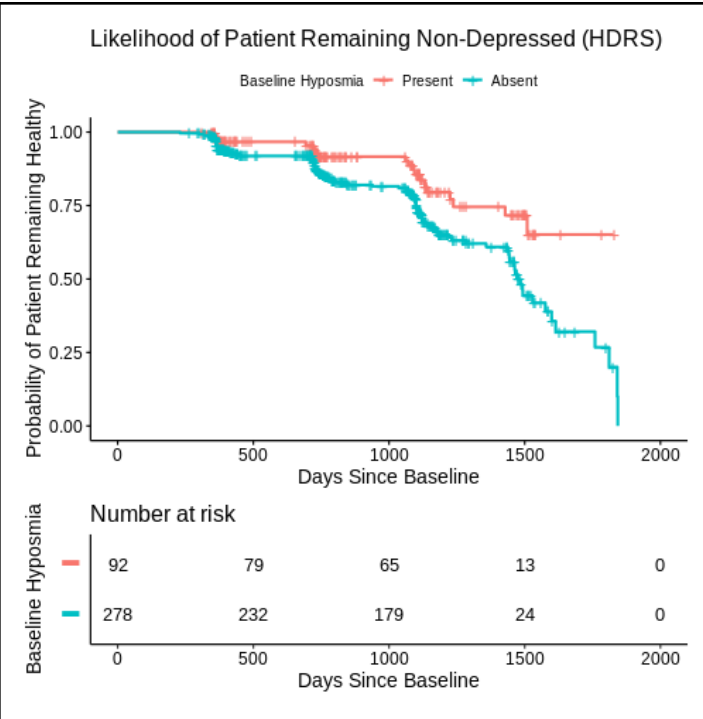
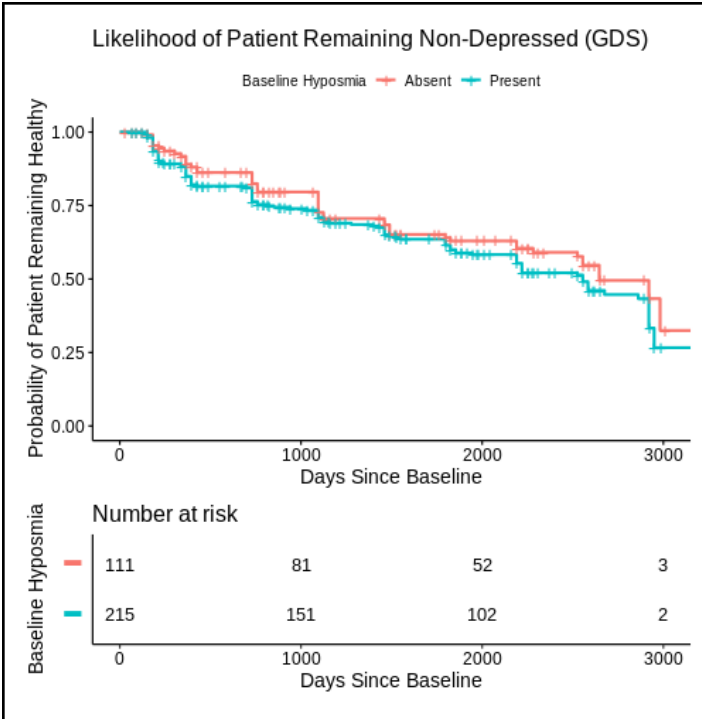
Kaplan-Meier curves with number at risk tables for variables that were associated with an increased risk of depression in either cohort using their respective depression-specific scales.

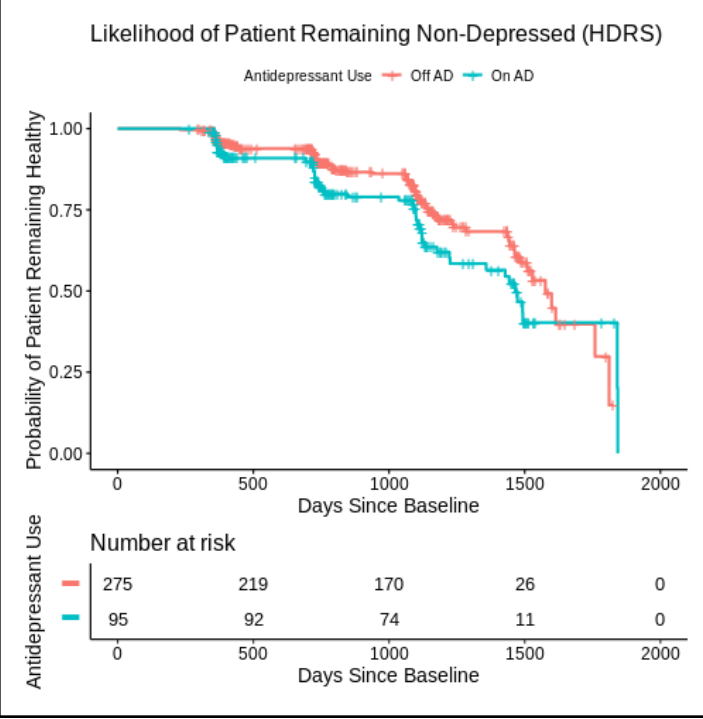
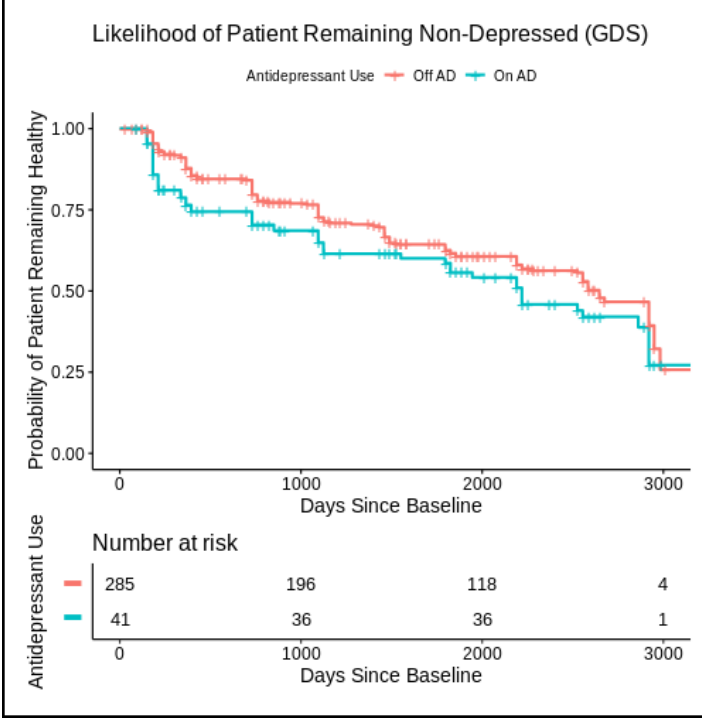
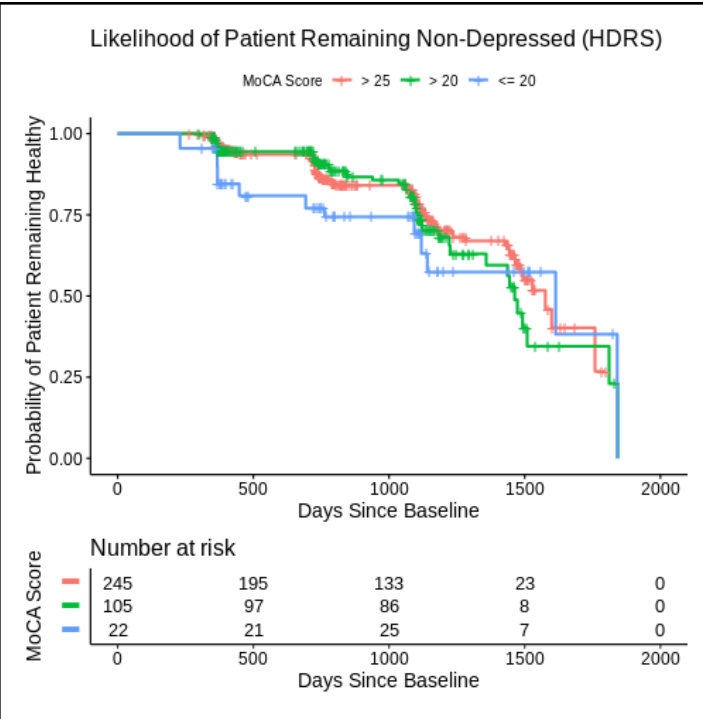
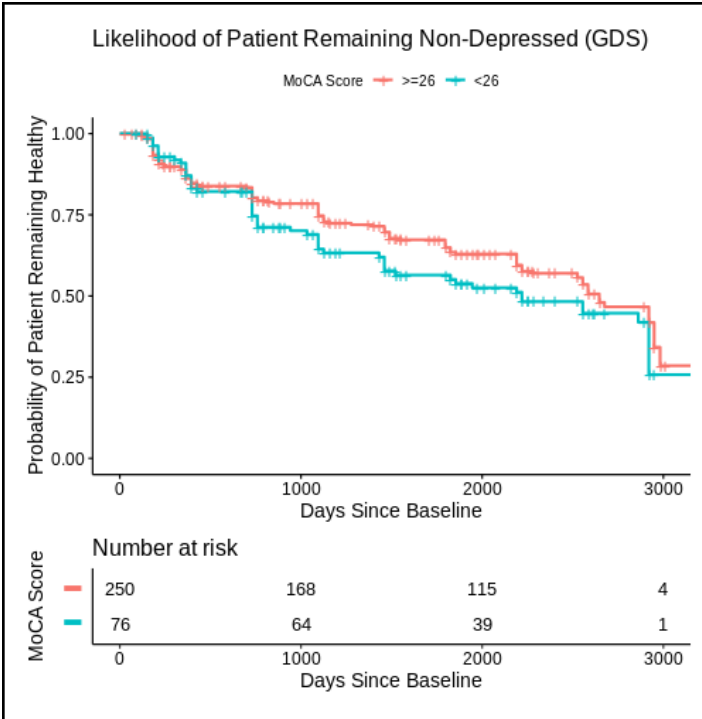
PPMI

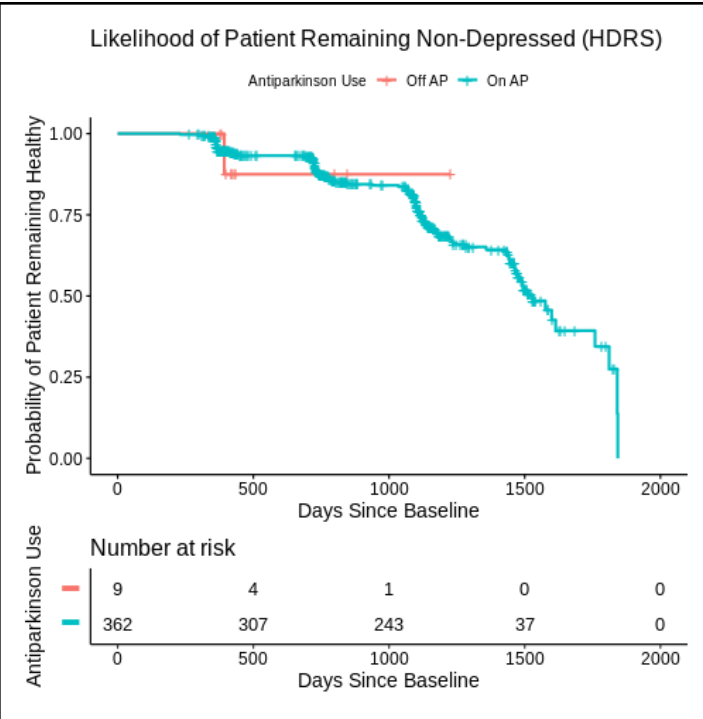
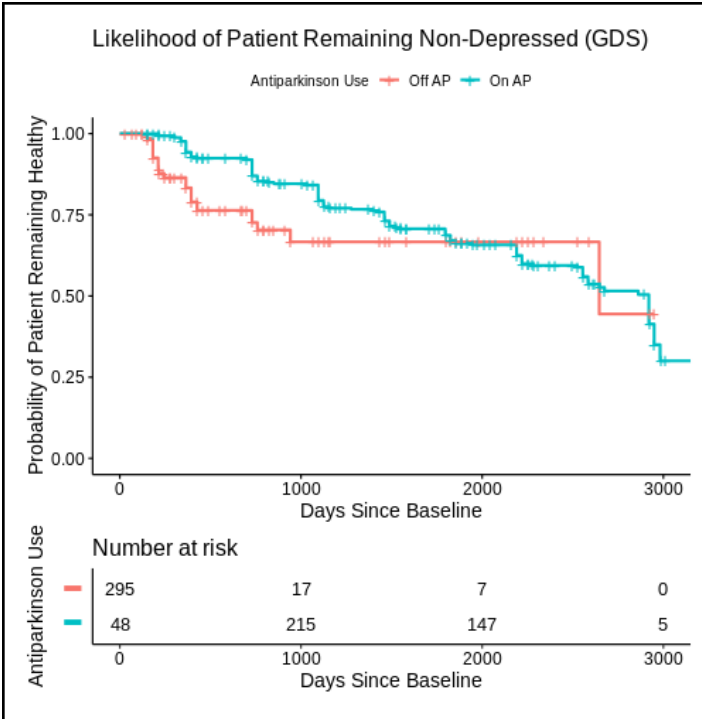


PDBP









GDS, Geriatric Depression Scale; HDRS, Hamilton Depression Rating Scale; AD, Antidepressant; AP, Antiparkinson

Supplemental Table 2

Summary of meta-analysis of the cox proportional hazards models for depression in PPMI and PDBP using the UPDRS depressed mood item.

	PPMI		PDBP		Meta-Analysis		
	HR [95% CI]	p-value	HR [95% CI]	p-value	HR [95% CI]	p-value	I ²
<i>Baseline Predictive Covariates (Time-Independent)</i>							
College Education or Greater	0.85 [0.60, 1.22]	0.38	0.62 [0.46, 0.85]	2.7e-3 **	0.72 [0.53, 0.98]	0.04 *	42.6%
Gender (Male as Reference)	1.46 [1.02, 2.08]	0.04 *	1.16 [0.90, 1.50]	0.26	1.25 [1.01, 1.55]	0.04*	3.5%
Age at Baseline	1.01 [0.99, 1.03]	0.45	0.98 [0.95, 1.01]	0.16	1.00 [0.97, 1.02]	0.74	61.2%
Baseline Duration of Diagnosis	0.83 [0.60, 1.15]	0.26	1.00 [0.95, 1.06]	0.97	0.98 [0.86, 1.11]	0.71	14.6%
Baseline UPDRS Part II Total	1.05 [1.01, 1.10]	0.02 *	1.06 [1.04, 1.09]	3.6e-7 ***	1.06 [1.04, 1.08]	<1e-4 ***	0.0%
Probable RBD at Baseline	1.19 [0.81, 1.75]	0.39	1.49 [1.22, 1.81]	7.1e-5 ***	1.42 [1.18, 1.70]	2e-4 ***	3.19%
Baseline Hyposmia	1.22 [0.84, 1.76]	0.31	1.17 [0.79, 1.74]	0.43	1.19 [0.91, 1.57]	0.20	67.2%
Baseline Presence of Constipation	2.74 [1.63, 4.59]	1.3e-4 ***	1.32 [1.02, 1.71]	0.04 *	1.83 [0.90, 3.74]	0.10	83.7% *
<i>Adjustment Covariates (Time-Dependent)</i>							
MoCA Total Score	0.97 [0.91, 1.03]	0.29	0.99 [0.94, 1.04]	0.77	0.98 [0.95, 1.02]	0.36	0.0%
Use of Antidepressants	2.62 [1.81, 3.80]	3.7e-7 ***	1.99 [1.06, 3.73]	0.03 *	2.44 [1.77, 3.36]	<1.0e-4 ***	0.0%

RBD, REM Sleep Behavior Disorder. UPDRS, Movement Disorder Society revised Unified Parkinson's Disease Rating Scale; MoCA, Montreal Cognitive Assessment;
 ***: p< 0.001, **: p<0.01, *: p<0.05. (t-test).