

1 **Supplementary Material**

2 *Detailed cohort description*

3 EPIC-IT

4 The European Prospective Investigation into Cancer and Nutrition (EPIC) is a large European
5 study on diet and cancer and has been previously described elsewhere (Riboli 2001, Palli et al.
6 2003). The Italian component of EPIC (EPIC-IT) recruited 47,749 adult volunteers (men and
7 women) at five centres: Varese and Turin in northern Italy, Florence in central Italy and Naples
8 and Ragusa in southern Italy. All participants signed an informed consent form and completed
9 two questionnaires: one about dietary habit (food-frequency) and one about lifestyle, with
10 information on education, socioeconomic status, occupation, history of previous illnesses and
11 surgery, lifetime tobacco use and alcohol consumption and physical activity. EPIC-IT database
12 records were linked to cancer and regional mortality registries after database quality control.
13 All EPIC-IT centres except Naples are covered by population-based cancer registries. In
14 Naples, follow-up information was collected from electronic hospital discharge records and
15 also by periodic personal contact with participants. The study was approved by the ethical
16 review boards of the International Agency for Research on Cancer, and of the collaborating
17 institutions responsible for subject recruitment in each of the EPIC recruitment centres. All
18 centres for EPIC Italy, except for Florence are represented in LIFEPATH.

19 *Education* level was collected at baseline via questionnaire as none, primary school, lower
20 secondary school, vocational school, higher secondary school, BSc, and MSc.

21 *Paternal profession* during childhood was collected at baseline via questionnaire as farmer,
22 retailer, not employed, clerical worker, professional and manager, unskilled worker, skilled
23 worker. This was categorized into manual and non-manual profession to characterize paternal
24 occupational position.

25 *DNA methylation measurements and pre-processing.* DNA from blood samples were extracted
26 from buffy coats using the QIAasymphony DNA Midi Kit (Qiagen, Crawley, UK). Bisulphite
27 conversion of 500 ng of each sample was performed using the EZ-96 DNA Methylation-Gold™
28 Kit according to the manufacturer's protocol (Zymo Research, Orange, CA). Then, bisulfite-
29 converted DNA was used for hybridization on the Infinium HumanMethylation 450 BeadChip,
30 following the Illumina Infinium HD Methylation protocol. Briefly, a whole genome
31 amplification step was followed by enzymatic end-point fragmentation and hybridization to
32 HumanMethylation 450 BeadChips at 48°C for 17 h, followed by single nucleotide extension.
33 The incorporated nucleotides were labeled with biotin (ddCTP and ddGTP) and 2,4-
34 dinitrophenol (DNP) (ddATP and ddTTP). After the extension step and staining, the BeadChip
35 was washed and scanned using the Illumina HiScan SQ scanner. The intensities of the images
36 were extracted using the GenomeStudio (v.2011.1) Methylation module (1.9.0) software, which
37 normalizes within-sample data using different internal controls that are present on the
38 HumanMethylation 450 BeadChip and internal background probes. The methylation score for
39 each CpG was represented as a β -value according to the fluorescent intensity ratio representing
40 any value between 0 (unmethylated) and 1 (completely methylated).

41 We extracted raw fluorescence intensities data from 'idat' files and performed background
42 subtraction, colour bias correction, and fluorescence intensities normalization using in house
43 developed R script described elsewhere (Campanella et al. 2015). Samples were excluded if the
44 bisulphite conversion fluorescence intensity was low (i.e. less than 10,000 for both type-I and
45 type-II probes). Methylation measures were set to missing if the detection p-value was higher
46 than 0.01. Finally, samples and CpG sites with low call rate (<95%) were removed prior to the
47 analysis, as long with probes with non-unimodal distribution (probably methQTL sites). Probe
48 design bias was corrected using the beta-mixture quantile (BMIQ) normalization procedure
49 implemented in the 'wateRmelon' R package (Pidsley et al. 2013). Known batch effect by plate

50 and position on the Illumina Beadchip was removed before statistical analyses using the
51 ComBat algorithm described by Johnson et al. (ComBat function in the "sva" R package) (Leek
52 et al. 2012). Finally, the leukocyte composition in each sample was estimated according to
53 Houseman's method (Houseman et al. 2012). Epigenetic clocks measures were derived
54 according with the algorithms described in the Horvath online epigenetic age calculator
55 (<https://horvath.genetics.ucla.edu/html/dnamage/>).

56 The sample with measured DNA methylation included individuals from five nested case-
57 control studies on breast, colon, and lung cancer, lymphomas, and myocardial infarction.
58 Participants were sampled from the 47,749 participants of the EPIC Italy cohort and included
59 354 incident breast cancer cases, 169 incident colon cancer cases, 192 incident lung cancer
60 cases, 72 incident lymphoma cases, 292 incident myocardial infarction cases and their 1,079
61 matched controls. Controls were individually matched on age (± 5 years), sex, season of blood
62 collection, center, and length of follow-up. We excluded cases whose diagnosis was made less
63 than one year since blood draw (N=68). Overall, after DNA methylation data quality controls
64 and sample filtering 1,803 EPIC Italian subjects were left. After excluding samples from
65 Florence center, 1,545 participants were left to use in this study.

66 *Smoking* was self-reported and assessed at baseline via a questionnaire. Information was
67 collected for specific time periods (at the age of 20, 30, 40 and 50 years, approximately) and
68 number of pack years and cigarettes per day, including the cumulative length of periods of
69 smoke cessation for both current and former smokers (except in Naples).

70 *Alcohol* consumption was self-reported and collected at baseline. Past alcohol consumption was
71 assessed as the number of glasses and types of alcoholic beverage consumed per week at
72 different ages (20, 30, 40, and 50 y of age) (except in Naples).

73 *Physical activity* was collected at baseline via questionnaire. Questions included information
74 on physical activity related to individuals' current job (sedentary, mainly standing, manual
75 work, very heavy manual work), floor climbing, walking, biking, gardening, and physical
76 fitness. Information on these latter activities was collected relative to winter and summer
77 months. Energy estimates were constructed for the amount of energy expenditure for each type
78 of activity considering the age and weight of individual participants. A cumulative index was
79 estimated to describe activity as sport at least once a week or not.

80 *Body mass index* was collected at baseline and defined by height and weight that were measured
81 at enrolment with a standardized protocol. Body mass index was calculated as the ratio between
82 weight in kg and squared height in metres.

83 *Diabetes* was assessed at baseline, at the enrolment interview on selected medical conditions.

84 *Hypertension* was assessed at baseline at the enrolment interview on selected medical
85 conditions and defined as present if the participant was under medical treatment, or with a
86 measured systolic blood pressure ≥ 140 mmHg or diastolic blood pressure ≥ 90 mmHg.

87 *Vital status* was ascertained from local demographic database via automated linkage from the
88 population town offices and mortality registry. In LIFEPATH, follow-up of vital status is
89 available up to 2014.

90

91 ESTHER

92 The ESTHER study is an ongoing population-based cohort study conducted in the federal state
93 of Saarland, Germany (Raum et al. 2007). In brief, 9,949 older adults (50-75 years) were
94 recruited by their general practitioners (GPs) during routine health check-ups (offered every
95 two years to people older than 35 years in the German healthcare system) between 2000 and

96 2002 and followed up thereafter. During the baseline enrolment, epidemiological data
97 (including socio-demographic characteristics, lifestyle factors, and history of major diseases)
98 were collected via a standardized self-administered questionnaire completed by participants and
99 via additional reports from participants' GPs, and biological samples (blood, stool, urine) were
100 obtained and stored at -80°C . The study was approved by the ethics committees of the
101 University of Heidelberg and of the Medical Association of Saarland. All participants provided
102 written informed consent.

103 *Education* level was collected at baseline via questionnaire as no education, Hauptschule,
104 Realschule, Mittlere reife, Fachhochschulreife, Abitur.

105 *DNA methylation measurements and pre-processing.* DNAm in whole blood was quantified
106 using the Infinium HumanMethylation450K BeadChip (Illumina, Inc, San Diego, CA, USA)
107 Details of methylation analysis in the ESTHER study have been reported previously (Zhang et
108 al. 2016). According to the manufacturer's protocol, data were normalized to internal controls
109 provided by Illumina (Illumina normalization). In data pre-processing, probes with detection P -
110 value >0.01 , with missing values $>10\%$, probes targeting the sex chromosomes, cross-reactive
111 probes and polymorphic CpGs55 were excluded, leaving 430,363 CpGs for genome-wide
112 screening. In the KORA study, data were pre-processed following the pipeline of Lehne (Lehne
113 et al. 2015), probes with detection P -value ($1-P$ -value computed from the background model
114 characterizing the probability that the target sequence signal was distinguishable from the
115 negative controls) >0.01 and missing values $>5\%$ were removed, and quantile normalization
116 was applied following stratification of the probe categories into six types, based on probe type
117 and colour channel, using the R package limma (Smyth 2005). Leukocyte composition was
118 estimated using the algorithms of Houseman *et al.* (Houseman et al. 2012). Epigenetic clocks
119 were derived using the Horvath online epigenetic age calculator
120 (<https://horvath.genetics.ucla.edu/html/dnamage>).

121 Two subsets of ESTHER participants were selected for DNA methylation assessment in the
122 baseline blood samples: Subset I consisted of 1,000 participants consecutively enrolled during
123 the first 3 months of recruitment; Subset II consisted of 864 participants selected for a case-
124 control design for mortality analysis (Zhang et al. 2017). In mediation analyses, we pooled the
125 two subsets at individual level and included an indicator variable as covariate to consider the
126 potential differences between the two sub-cohorts.

127 *Smoking* was self-reported and assessed at baseline via a questionnaire and coded as ‘Never’,
128 ‘Former’, or ‘Current’ smoker.

129 *Alcohol* consumption was self-reported and collected at baseline. Grams of daily alcohol
130 consumption were coded as abstainer, moderate, and high alcohol intake following WHO
131 standards.

132 *Physical activity* was collected at baseline via questionnaire. Participants who responded to
133 practice ≥ 2 h of vigorous or light physical activity per week were classified as active, and not
134 active otherwise.

135 *Body mass index* was collected at baseline and defined by height and weight that were measured
136 at enrolment with a standardized protocol. Body mass index was calculated as the ratio between
137 weight in kg and squared height in metres.

138 *Diabetes* was assessed at baseline and determined from self-reported use of glucose lowering
139 drugs, or self-reported physician diagnosis, or measured HbA1c levels $\geq 6.5\%$, or fasting
140 glucose levels ≥ 126 mg/dL, or non-fasting glucose levels ≥ 200 mg/dL.

141 *Hypertension* was assessed at baseline and determined from self-reported use of anti-
142 hypertensive treatment, or self-reported physician diagnosis, or measured systolic blood
143 pressure ≥ 140 mmHg or diastolic blood pressure ≥ 90 mmHg.

144 *Vital status* was ascertained from local demographic database via automated linkage from the
145 population town offices and mortality registry. Follow-up of vital status was available up to
146 2016.

147

148 MCCS

149 The Melbourne Collaborative Cohort Study (MCCS) has been fully described in a cohort
150 profile(Milne et al. 2017). It is a prospective cohort study of 41,513 participants living in
151 Melbourne, Australia. Caucasian volunteers aged between 40 and 69 years were recruited
152 mainly from the Victorian Electoral Enrolment Register (enrolment to vote is compulsory in
153 Australia) and the Melbourne metropolitan telephone directory. At baseline (1990–1994),
154 participants attended clinics where demographic, lifestyle and dietary information were
155 collected, and anthropometric measurements were performed. The Cancer Council Victoria's
156 Human Research Ethics Committee approved the study protocol.

157 *Education* was derived at baseline. Education was collected as an ordinal variable, as never
158 attended school, attended some primary school, completed primary school, attended some
159 high/technical school, obtained other qualification (e.g. trade certificate), completed high
160 school or technical school, completed a tertiary degree or diploma, completed some study
161 towards a tertiary degree or diploma.

162 *DNA* samples used for the present analysis were extracted from peripheral blood drawn at the
163 time of recruitment (1990–1994). For the majority (70%) of participants, the DNA source was
164 dried blood spots collected onto Guthrie Card Diagnostic Cellulose filter paper (Whatman plc,
165 Kent, United Kingdom) and stored in airtight containers at room temperature. The other sources
166 of DNA were peripheral blood mononuclear cells and buffy coats stored at –80°C for 28% and
167 2% participants, respectively. The study sample comprised Melbourne Collaborative Cohort

168 Study participants selected as controls in nested case-control studies of breast, colorectal,
169 kidney, lung, prostate, or urothelial cancer or mature B-cell malignancies (Severi et al. 2014,
170 Dugué et al. 2016, Wong Doo et al. 2016, Baglietto et al. 2017). Controls had been individually
171 matched to cases on age (they had to be free of cancer at an age within 1 year of the age at
172 diagnosis of the corresponding case), sex, country of birth, and blood DNA source (dried blood
173 spot, peripheral blood mononuclear cells, or buffy coat). For all but the colorectal cancer study,
174 controls were matched to cases on year of birth. For the lung cancer study, controls were
175 additionally matched on smoking status at the time of blood collection. Methods relating to
176 DNA extraction and bisulphite conversion and DNA methylation data processing have been
177 described in detail elsewhere (Dugué et al. 2018). Briefly, a total of 200 ng of bisulphite-
178 converted DNA was whole-genome amplified and hybridised onto the BeadChips. Bisulphite
179 conversion and quantification of DNA methylation with the Infinium HumanMethylation450
180 BeadChip were performed according to manufacturer's instructions. DNA methylation data
181 were pre-processed and normalized using in house developed R script described elsewhere
182 (Campanella et al. 2015). Samples were excluded (N = 124) if the bisulphite conversion control
183 fluorescence intensity was less than 10,000 for both type I and type II probes. DNA methylation
184 levels were expressed as the ratio of the intensities of methylated cytosines over the total
185 intensities (β values). Each methylation measure was set to missing if the detection p-value was
186 greater than 0.01; probes and samples were excluded if the total call rate was less than 95% (N
187 = 255). Additionally, the set of cross-reactive and/or polymorphic probes with minor allele
188 frequency higher than 0.01 in Europeans was excluded due to the low reliability of methylation
189 measures. Forty-six samples were excluded because the estimated sex did not match the sex
190 reported by the participant. Finally, a total of N = 2,816 participants had DNA methylation data
191 available. Known batch effect by plate and position on the Illumina Beadchip was removed
192 before statistical analyses and epigenetic clock computation using the ComBat algorithm

193 described by Johnson et al. (ComBat function in the "sva" R package) (Leek et al. 2012).
194 Finally, the leukocyte composition in each sample was estimated according to Houseman's
195 method (Houseman et al. 2012).

196 *Smoking* was self-reported and assessed at baseline via a questionnaire and coded as 'Never',
197 'Former', or 'Current' smoker.

198 *Alcohol* was self-reported and assessed at baseline via a questionnaire that asked about beverage
199 specific (beer, wine, spirits) intake by unit and frequency for the current decade of life.

200 *Physical activity* was measured from questions relating to frequency of walking, vigorous
201 exercise (defined as exercise that induced sweat or feelings of out of breath, including
202 swimming, tennis, netball, athletics, and running), and less vigorous exercise (defined as
203 exercise that did induce sweat or feelings of out of breath, including bike riding, dancing, etc)
204 over the last 6 months were asked. The reported frequency for each question was coded as
205 follows: 0 (none), 1.5 (one or two times per week), and 4 (three or more times per week).
206 Walking and less vigorous exercise frequencies were added together along with two times the
207 frequency of vigorous exercise to generate a physical activity score for each person, in minutes
208 per week. Participants with less than 75 min/week were classified as having low physical
209 activity, and those with more than 75 min/week as having high physical activity.

210 *Body mass index* was assessed at baseline and follow-up and based off of height and weight
211 were measured at enrolment with a standardized protocol and body mass index (BMI calculated
212 as the ratio between weight in kg and squared height in metres).

213 *Diabetes* was assessed at baseline and follow-up and based off of self-reported diabetes status
214 (yes/no) and status based on blood glucose measured at baseline and self-report. For incident
215 cases of type 2 diabetes, 76% had their diagnosis confirmed by their doctor.

216 *Hypertension* was assessed at baseline and follow-up via self-reported high blood pressure, self-
217 reported anti-hypertensive medication, and (average from two measures) value of systolic blood
218 pressure ≥ 140 mmHg or diastolic blood pressure ≥ 90 mmHg.

219 *Vitality* was identified by regular matching of the Melbourne Collaborative Cohort Study to
220 cancer registries and death indices. Non-cancer, non-fatal health events were captured by
221 following up the cohort with a mailed questionnaire and by telephone. Follow-up of vital status
222 was available up to 2015. Participants were considered to be at risk from their index date (the
223 date on which they reached the age at which their matched case in the corresponding nested
224 case-control study was diagnosed with cancer) onward in order to avoid immortal time bias, as
225 they had to be alive at this date.

226

227 KORA

228 The KORA project (Cooperative Health Research in the Region of Augsburg) consists of four
229 independent cross-sectional surveys (S1–S4) starting between 1984 and 2001, and their
230 respective follow-up studies (Holle et al. 2005). All participants were from the city or region of
231 Augsburg. All participants were living in Germany and all were of European origin. For the
232 present study, only participants in the KORA-F4 study (2006-2008) for which a DNA
233 methylation measurement was available were included.

234 Genome-wide DNA methylation measurement at 485,577 genomic sites from whole-blood was
235 performed using the Infinium HumanMethylation450K BeadChip® (Illumina, Inc., CA, USA)
236 in 1,802 KORA F4 samples. These participants were chosen randomly stratified for age groups,
237 where older participants were oversampled compared to younger ones. Sample preparation and
238 measurement have been described previously (Zeilinger et al. 2013, Wilson et al. 2017).
239 Methylated and unmethylated signal intensities were obtained for each CpG site, which were

240 then converted to β -values, the ratio of the methylated signal intensity divided by the overall
241 signal intensity. DNA methylation data were pre-processed following the CPACOR pipeline
242 (Lehne et al. 2015). First, 65 probes that represent SNPs were excluded. Second, background
243 correction was performed using the R package minfi, version 1.6.0 (Aryee et al. 2014). Third,
244 detection p-values were defined as the probability of a signal being detected above the
245 background signal level, as estimated from negative control probes. Consequently, signals with
246 detection p-values ≥ 0.01 were removed, as they indicate putatively unreliable signals.
247 Similarly, signals summarized from less than three functional beads on the chip were
248 characterized as potentially unreliable and removed from the data set. Observations with less
249 than 95% of CpG sites providing reliable signals (75 in KORA F4) were excluded, resulting in
250 1,727 samples overall.

251 Data were normalized using quantile normalization on the raw signal intensities. Beta-mixture
252 quantile normalization was performed on a stratification of the probe categories into 6 types,
253 based on probe type and colour channel, using the R package limma, version 3.16.5 (Smyth
254 2005). These data were then uploaded to Horvath's online calculator to generate the various
255 clock estimates.

256 *Smoking* was self-reported and assessed at baseline via a questionnaire. Regular and irregular
257 smoker were coded as 'current' smoker, the remaining individuals were divided in 'former'
258 smoker and 'never' smoker.

259 *Alcohol* consumption was collected at baseline based on average self-reported consumption (in
260 g/day). Participants were asked how much beer, wine, and spirits they consumed on the
261 previous weekday and weekend and were divided in 'abstainer', 'moderate' and 'high'
262 consumption.

263 *Physical activity* was collected at baseline via questionnaire. Participants were asked how often
264 they practice sports in summer/winter, with possible answers (1) regularly more than 2 hours a
265 week, (2) regularly 1 to 2 hours a week, (3) less than 1 hours per week and (4) no sport in
266 summer/winter. If the combined sum score was lower than 5, then participants were classified
267 as ‘active’, and ‘not active’ otherwise.

268 *Body mass index* was collected at baseline and defined by height and weight, which were
269 measured at enrolment with a standardized protocol. Body mass index was calculated as the
270 ratio between weight in kg and squared height in metres.

271 *Diabetes* was assessed at baseline. The definition is based on a self-reported diabetes diagnosis,
272 which was validated by the participant’s general practitioner, or antidiabetic medication intake.

273 *Hypertension* was assessed at baseline and defined as present if the participant was under
274 medical treatment for hypertension, or with a measured systolic blood pressure ≥ 140 mmHg or
275 diastolic blood pressure ≥ 90 mmHg.

276 *Vital status* was ascertained from local demographic database via automated linkage from the
277 population town offices and mortality registry. Follow-up of vital status was available up to
278 2016.

279

280 MESA

281 The *Multi-Ethnic Study of Atherosclerosis* (MESA) enrolled 6,814 participants aged 45–84 free
282 of cardiovascular diseases at baseline from July 2000 to July 2002 at six field centres
283 (Baltimore, MD; Chicago, Illinois; Los Angeles, CA; New York, NY; St. Paul, MN, and
284 Winston-Salem, NC) with ongoing follow-up. The MESA cohort is a diverse, population-based
285 sample of 38% white, 28% black, 22% Hispanic, and 12% Asian participants, of whom half are

286 women. Study participants underwent extensive physical exams to determine subclinical
287 cardiovascular diseases and questionnaires to obtain information on sociodemographic,
288 lifestyle, and psychosocial factors. The MESA study protocol was approved by the Institutional
289 Review Boards (IRBs) at Johns Hopkins Medical Institutions, University of Minnesota,
290 Columbia University Medical Center, Wake Forest University Health Sciences, and University
291 of Washington. Analysis for this study was approved by the University of Michigan IRB. All
292 participants signed informed consent.

293 *Education* was assessed at baseline via questionnaire as no schooling; grades 1-8, grades 9-11,
294 completed high school/GED, some college but no degree, technical school certificate, associate
295 degree, bachelor's degree, and graduate or professional school.

296 *Race/ethnicity* was self-reported at baseline as White, Asian, Black and Hispanic.

297 *Maternal and paternal education* were collected at the second examination between 2002 and
298 2004. Participants reported whether their mother/father had no schooling, some schooling but
299 did not complete high school, high school degree, some college, college degree, graduate or
300 professional school.

301 *DNA methylation* was measured within the MESA Epigenomics and Transcriptomics Study.
302 Genome-wide methylomic and transcriptomic profiles of CD14+ purified monocytes were
303 obtained from 1,264 randomly selected MESA participants from four MESA field centers
304 (Baltimore, MD; New York, NY; St. Paul, MN; and Winston-Salem, NC) at the 5th examination
305 (April 2010-February 2012) (Liu et al. 2013). These participants were 47% white. A detailed
306 description of the data extraction and processing procedures used for DNA methylation can be
307 found in Liu(Liu et al. 2013). Briefly, blood was drawn in the morning after a 12 hour fast.
308 Monocytes were isolated using AutoMACs automated magnetic separation units (Miltenyi
309 Biotec, Bergisch Gladbach, Germany) and were consistently >90% pure. Samples were plated

310 using a stratified random sampling technique to reduce bias due to batch, chip, and position
311 effects. Methylation was measured using the Illumina HumanMethylation450 BeadChip, and
312 bead-level data were summarized in GenomeStudio. Quantile normalization was performed
313 using the *lumi* package (Du, Kibbe and Lin 2008). Quality control measures included checks
314 for sex and race/ethnicity mismatches and outlier identification by multidimensional scaling
315 plots. Criteria for elimination included: ‘detected’ methylation levels in <90% of MESA
316 samples (using a detection p-value threshold of 0.05) or overlap with a repetitive region. 65
317 probes that assay highly polymorphic single nucleotide polymorphisms (SNPs) rather than
318 methylation were also excluded (Pidsley et al. 2013). DNA methylation clocks were calculated
319 using an R script, with the exception of DNAmGrimAge, which was calculated using the
320 Horvath online DNA Methylation Age Calculator (<http://dnamage.genetics.ucla.edu/new>).

321 *Smoking* was self-reported and assessed at the 5th examination via a questionnaire.

322 *Alcohol* consumption was self-reported and collected at the 5th examination. Reported weekly
323 consumption of red/white glasses, beer and liquor or mixed drinks were converted into alcohol
324 units and then categorized according to WHO standards.

325 *Physical activity* was collected at the 5th examination via questionnaire- Self-reported total
326 intentional exercise encompassing walking for exercise, dance, sports, individual activities, and
327 conditioning were converted in MET (min/week). Participants scoring ≥ 600 MET were
328 categorized as physically active, and not physically active otherwise.

329 *Body mass index* was collected at the 5th examination and defined by height and weight that
330 were measured at enrolment with a standardized protocol. Body mass index was calculated as
331 the ratio between weight in kg and squared height in metres.

332 *Diabetes* was assessed at the 5th examination, and established following the 2003 diagnostic
333 criteria of American Diabetes Association about impaired fasting glucose, that encompassed
334 self-reported anti-diabetic treatment and fasting glucose measurement.

335 *Hypertension* was assessed at the 5th examination defined as present if averaged second and
336 third readings of systolic blood pressure was ≥ 140 mmHg or of diastolic blood pressure was
337 ≥ 90 mmHg.

338 *Vital status* was ascertained from local demographic database via automated linkage from the
339 population town offices and mortality registry. Follow-up of vital status was available up to
340 2019.

341

342 NICOLA

343 The *Northern Ireland Cohort for the Longitudinal Study of Ageing* (NICOLA) is a longitudinal
344 cohort representative of the non-institutionalized population of Northern Ireland 50 years and
345 older (n=8,500) (Burns et al. 2017). The study which was established in 2013 has three main
346 components: a computer aided personal interview (CAPI), a self-completion questionnaire and
347 health assessment. Dietary intake was also assessed by a food frequency questionnaire. The
348 CAPI was extensive in scope and included assessment of demographic, social and health-
349 related factors. Measures of cardiovascular, physical, cognitive and visual function were
350 determined, and a biobank of biological samples collected.

351 *Education* was self-reported at baseline via questionnaire as none, some primary (not complete),
352 primary or equivalent, GCSE/Intermediate/junior/group certificate or equivalent, A-
353 level/Leaving certificate or equivalent, diploma/certificate, primary degree,
354 postgraduate/higher degree.

355 *Financial situation before age 14* was self-reported at baseline as poor, about average, pretty
356 well off financially.

357 *DNA methylation measurement*

358 All the study participants that attended the health assessment and provided a venous blood
359 sample were analysed for DNA methylation profiles. DNAm measurement was performed from
360 blood cells using the Illumina850K BeadChip array, using standard protocols suggested by the
361 manufacturers. Raw methylation data were pre-processed and analysed as previously described
362 for the EPIC Italy cohort. Epigenetic clocks measures were derived as previously described for
363 the EPIC Italy cohort.

364 *Smoking* was self-reported and assessed at baseline via a questionnaire.

365 *Alcohol* consumption was self-reported and collected at baseline as total number of alcohol
366 units per week.

367 *Physical activity* was collected at baseline via questionnaire. The sum of vigorous and moderate
368 leisure physical activities and walking activities were estimated as MET (min/week).
369 Participants scoring ≥ 600 MET were categorized as physically active, and not physically active
370 otherwise.

371 *Body mass index* was collected at baseline and defined by height and weight that were measured
372 at enrolment with a standardized protocol. Body mass index was calculated as the ratio between
373 weight in kg and squared height in metres.

374 *Diabetes* was assessed at baseline as self-reported intake of anti-diabetic drugs or measured
375 HbA1c levels $\geq 6.5\%$.

376 *Hypertension* was assessed at baseline as self-reported intake of anti-hypertensive drugs,
377 physician diagnosis, or measured systolic blood pressure ≥ 140 mmHg or diastolic blood
378 pressure ≥ 90 mmHg (average of last two readings).

379 *Vital status* was ascertained from local demographic database via automated linkage from the
380 Business Services Organisation (BSO), an agency of the Department of Health, which uses
381 information from the Northern Ireland Registrar General together with data from registrations
382 and pensions to identify all deaths in Northern Ireland. Follow-up of vital status was available
383 up to 31st May 2020.

384

385 RS

386 The *Rotterdam Study* (RS) is a prospective population-based study started in 1989. It is
387 composed of residents of the neighbourhood of Ommoord, Rotterdam, the Netherlands, aged
388 45 years and over. Each participant gave an informed consent and the study was approved by
389 the medical ethics committee of the Erasmus University Medical Center, Rotterdam, the
390 Netherlands.

391 Data on socio-economic status, diet and lifestyle factors were assessed by standardized
392 questionnaires, measured anthropometric data and blood samples collected for DNA extraction.

393 *Education* was categorized into three groups: i) 'low' = primary school or lower; ii) 'medium'
394 = secondary school; iii) 'high' = university degree or higher.

395 DNA for methylation measurement was extracted from whole blood (stored in EDTA tubes)
396 by standardized salting out methods, from a randomly selected sample of 1,471 individuals of
397 RS second (RSII) and third (RSIII) sub-cohorts. Purified DNA was bisulfite-converted using
398 the Zymo EZ DNA Methylation kit (Zymo Research Corporation) Genome-wide DNA

399 methylation was measured in genomic DNA using the Illumina Infinium HumanMethylation
400 450 BeadChip (HM450) (Illumina, CA, USA), according to manufacturer's protocols.
401 Preparation and normalization of this array data was performed according to the CPACOR
402 workflow (Lehne et al. 2015). The idat files were read using the minfi package. Samples
403 showing inadequate hybridization, incomplete bisulfite treatment and gender swaps were
404 excluded. Samples were excluded if signal detection rate across probes was < 95%, leaving
405 1,420 individuals. CpG methylation proportion was reported as a normalized β -value ranging
406 from 0 to 1, where 1 represents 100% methylation. β values being outside 1.5 times the
407 interquartile range per probe were set to missing. Epigenetic clocks were estimated as described
408 for EPIC-IT.

409 *Smoking* was categorized as 'never', 'former' and 'current' smokers based on self-reported
410 information.

411 *Physical activity level* was measured with a self-administrated LASA Physical Activity
412 questionnaire (LAPAQ). Later, the intensity of the reported activities was quantified using the
413 metabolic equivalent of task (MET) hours per week, and then categorized in three groups: i)
414 sedentary: <10 MET hours/week; ii) moderately active: 10–40 MET hours/week and iii) active:
415 > 40 MET hours/week.

416 *Alcohol* consumption was collected using a validated semiquantitative food-frequency
417 questionnaire. Frequency and amount of alcohol consumed was reported.

418 *Body mass index* (BMI) was calculated as the ratio between weight in kg and squared height in
419 meters, and then categorized in three groups: i) normal weight: $BMI \leq 25$; ii) overweight: $25 <$
420 $BMI \leq 30$; iii) obese = $BMI \geq 30$

421 *Type 2 diabetes* cases were defined as the presence of either fasting serum glucose level ≥ 7.0
422 mmol/L, physician diagnose or the use of glucose-lowering medication according to pharmacy
423 records.

424 *Hypertension* was defined as an average value (of two measurements) of ≥ 140 mmHg for
425 systolic- and ≥ 90 mmHg for diastolic blood pressure, or the use of antihypertensive medication,
426 according to pharmacy records.

427 *Vital status* was obtained from the municipal health authorities in Rotterdam. Follow-up of vital
428 status was available up to May 2018.

429

430 TILDA

431 *The Irish Longitudinal Study on Ageing (TILDA)* is a large prospective cohort study examining
432 the social, economic and health circumstances of 8,175 community-dwelling older adults aged
433 50 years and over resident in the Republic of Ireland. The sample was generated using a 3-stage
434 selection process and the Irish Geodirectory as the sampling frame. The Irish Geodirectory is a
435 comprehensive listing of all addresses in the Republic of Ireland, which is compiled by the
436 national post service and ordnance survey Ireland. Subdivisions of district electoral divisions
437 pre-stratified by socio-economic status, age, and geographical location, served as the primary
438 sampling units. The second stage involved the selection of a random sample of 40 addresses
439 from within each PSU resulting in an initial sample of 25,600 addresses. The third stage
440 involved the recruitment of all members of the household aged 50 years and over.
441 Consequently, the response rate was defined as the proportion of households including an
442 eligible participant from whom an interview was successfully obtained. A response rate of 62%
443 was achieved at the household level. There were three components to the survey. Respondents
444 completed a computer-assisted personal interview and a separate self-completion paper and

445 pencil module which collected information that was considered sensitive. All participants were
446 invited to undergo an independent health assessment at one of two national centers using trained
447 nursing staff. Blood samples were taken during the clinical assessment with the consent of
448 participants. A more detailed exposition of study design, sample selection and protocol are
449 available elsewhere (Whelan and Savva 2013).

450 *Education* was self-reported at baseline via questionnaire as none, some primary (not complete),
451 primary or equivalent, intermediate/junior/group certificate or equivalent, leaving certificate or
452 equivalent, diploma/certificate, primary degree, postgraduate/higher degree.

453 *Paternal profession* during childhood was collected at baseline via questionnaire as farmer,
454 unskilled, semi-skilled, non-manual, managerial and technical, professional worker. This was
455 categorized into manual and non-manual profession to characterize paternal occupational
456 position.

457 *DNA methylation and pre-processing.* The study sample included 500 healthy individuals: 125
458 for each of the four SES classes: stable professional, any downward mobility, any upward
459 mobility, and stable unskilled. Buffy coat or peripheral blood mononuclear cells samples were
460 available for all the individuals and extracted at baseline. Overall, after DNA methylation data
461 quality controls and sample filtering, 490 subjects were retained. DNA samples were extracted
462 from buffy coats using the QIAGEN GENTRA AUTOPURE LS (Qiagen, Crawley, UK).
463 Bisulphite conversion of 500 ng of each sample was performed using the EZ DNA Methylation-
464 Lightning™ Kit according to the manufacturer's protocol (Zymo Research, Orange, CA). Then,
465 bisulfite-converted DNA was used for hybridization on the Infinium HumanMethylation 850k
466 BeadChip, following the Illumina Infinium HD Methylation protocol. Briefly, a whole genome
467 amplification step was followed by enzymatic end-point fragmentation and hybridization to
468 HumanMethylation EPIC Chip at 48°C for 17 h, followed by single nucleotide extension. The
469 incorporated nucleotides were labeled with biotin (ddCTP and ddGTP) and 2,4-dinitrophenol

470 (DNP) (ddATP and ddTTP). After the extension step and staining, the BeadChip was washed
471 and scanned using the Illumina HiScan SQ scanner. The intensities of the images were extracted
472 using the GenomeStudio (v.2011.1) Methylation module (1.9.0) software, which normalizes
473 within-sample data using different internal controls that are present on the HumanMethylation
474 850k BeadChip and internal background probes. The methylation score for each CpG was
475 represented as a β -value according to the fluorescent intensity ratio representing any value
476 between 0 (unmethylated) and 1 (completely methylated). DNA methylation data were pre-
477 processed and normalized using in-house software written for the R statistical computing
478 environment, including background and color bias correction, quantile normalization, and
479 BMIQ procedure to remove type I/type II probes bias, as described elsewhere (Teschendorff et
480 al. 2013). DNAm levels were expressed as the ratio of the intensities of methylated cytosines
481 over the total intensities (β values). Samples were excluded (N=4) if the bisulfite conversion
482 control fluorescence intensity was less than 10,000 for both type I and type II probes.
483 Methylation measures were set to missing if the detection p-value was greater than 0.01. No
484 samples were excluded because of total call rate lower than 95%. Finally, samples (N=6) were
485 excluded if the predicted sex (based on chromosome X methylation) did not match that self-
486 reported. Epigenetic clocks measures were derived as previously described for EPIC-IT.

487 *Smoking* was self-reported and assessed at baseline via a questionnaire.

488 *Alcohol* consumption was self-reported and collected at baseline. A derived variable describing
489 average number of drinks per week was obtained.

490 *Physical activity* was collected at baseline via the International Physical Activity Questionnaire
491 (IPAQ) short form scoring protocol. Participants scoring moderate or high exercise intensity
492 were categorized as physically active, while participants scoring low exercise intensity were
493 assigned to being not physically active.

494 *Body mass index* was collected at baseline and defined by height and weight that were measured
495 at enrolment with a standardized protocol. Body mass index was calculated as the ratio between
496 weight in kg and squared height in metres.

497 *Diabetes* was assessed at baseline via self-reported physician diagnosis or HbA1c values
498 $\geq 6.5\%$.

499 *Hypertension* was assessed at baseline via self-reported anti-hypertensive medications or a
500 measured systolic blood pressure ≥ 140 mmHg or diastolic blood pressure ≥ 90 mmHg.

501 *Vital status* was available from two sources: (i) through data linkage to the General Registrar's
502 Office (GRO) National Death Registry which was done in March 2017; and (ii) via an End of
503 Life (EOL) interview for deaths occurring subsequent to administrative record linkage, which
504 was conducted with the respondent's next of kin (if available). Follow-up of vital status was
505 available up to December 2018. In 11 individuals for whom date of death was not available,
506 their date of death was estimated as last interview observation + half of the inter-wave interval
507 (approximately 1 year).

508

509 ***Childhood socioeconomic conditions***

510 Proxies of socioeconomic conditions in childhood were available in four cohort studies and
511 were included as a potential confounding in a sensitivity analysis. In EPIC-IT we dichotomized
512 paternal profession into manual and non-manual work as a measure of occupational position.
513 Indeed, paternal occupational position is a commonly used indicator of socioeconomic
514 conditions in early life (Galobardes, Lynch and Smith 2007). In MESA we dichotomized
515 highest parental education into lower if participants reported parents had no schooling or some
516 schooling but did not complete, and higher otherwise. Parental education is another commonly
517 used indicator of socioeconomic conditions in early life (Galobardes et al. 2007). In NICOLA

518 a question about financial situation of the parents before age 14 was categorized into poor if
519 participants responded poor and good if participants responded about average or pretty well off
520 financially. In TILDA we dichotomized paternal occupational position into manual and non-
521 manual work.

522

523 *Harmonization of unhealthy lifestyle and morbidities*

524 Self-reported smoking was classed into current, former, and never. Alcohol consumption was
525 measured in alcohol units weekly, and we categorised participants as abstainers (0 units/week),
526 moderate drinkers (1-21 units/week for men, 1-14 units/week for women), or harmful drinkers
527 (>21 units/week for men, >14 units/week for women). Height and weight were measured using
528 standard procedures; body mass index (BMI) was calculated as kg/m^2 and categorised as
529 normal (<25), overweight (25 to <30), or obese (≥ 30). Leisure physical activity was measured
530 with different questions in each study so we dichotomised it into low and high physical activity.
531 Hypertension and diabetes were categorized as having or not having the morbidity.

532

533 *Mediation Method*

534 We adopted a counterfactual mediation framework to disentangle direct and indirect effects of
535 the exposure(s) on the outcome, via one or multiple mediators. Let nested counterfactual $Y(a,$
536 $M(a^*))$ denote the survival age that would have been observed if exposure A were set to higher
537 educational attainment (a) and mediator M (e.g. epigenetic ageing) to the value would have
538 taken if exposure were set to lower educational attainment (a^*). Denoting as S the sex of
539 participants and $g(t)$ the hazard function at age t, the total effect of exposure on outcome within
540 levels of S is provided by

$$541 \quad TE(a, a^*, s, t) = g\{E[Y(a, M(a))|S = s], t\} - g\{E[Y(a^*, M(a^*))|S = s], t\}$$

542 The above TE can be linearly decomposed into a pure direct (DE) and indirect (IE)
543 (VanderWeele 2015, Tchetgen Tchetgen 2013) effect within levels of S that are defined by

$$544 TE = DE + IE$$

$$545 DE(a, a^*, s, t) = g\{E[Y(a, M(a^*))|S = s], t\} - g\{E[Y(a^*, M(a^*))|S = s], t\}$$

$$546 IE(a, a^*, s, t) = g\{E[Y(a, M(a))|S = s], t\} - g\{E[Y(a, M(a^*))|S = s], t\}$$

547 The IE represents the portion of the TE explained by the chosen mediator M, whereby exposure
548 and mediator can interact in their effect on the outcome. In main analyses, we hypothesized that
549 the above effects were age-invariant.

550 Henceforth, we will describe the IORW method implementation for estimating above effects
551 on the absolute scale or as hazard differences. We specified the hazard function g via the
552 semiparametric additive hazard model, introduced by McKeague and Sasieni (McKeague and
553 Sasieni 1994) to extend the work by Aalen (Martinussen and Sheike 2006), whereby the
554 baseline hazard was left age-variant and non-parametrized while covariates (exposure and sex
555 in main analyses) were parametrized as linearly additive. Namely, the parametrization of g
556 resulted in

$$557 g(t, A, S) = \lambda_0(t) + \lambda_1 A + \lambda_2 S + \lambda_3 AS \quad (\text{Equ. 1})$$

558 We applied the inverse odds ratio weighting (IORW) approach (Tchetgen Tchetgen 2013) to
559 estimate DE, IE and TE given the above choice of hazard parametrization. Briefly, the total
560 effect corresponded to the parameter λ_1 for the exposure in the above hazard model, and was
561 estimated with the *timereg* (Martinussen and Sheike 2006) R package. The DE corresponded to
562 the same parameter λ_1 when the model in Equ. 1 was estimated through weighted regression,
563 whereby the chosen weights are inverse odds ratio weights considering the relationship between
564 exposure and mediator. Indeed, inverse odds ratio weighting condenses the relationship
565 between exposure and mediator using the odds ratio function as a measure of association into a

566 weight, removing the necessity to specify the regression model for the outcome on exposure
567 and mediator, including any exposure–mediator interactions (Tchetgen Tchetgen 2013).
568 Applying the inverse odds ratio weights renders the exposure and mediator independent,
569 deactivating the indirect pathways involving the mediator. To estimate these weights, we
570 parametrized the relationship between exposure and mediator with the following logistic model

$$571 \text{logit}(A) = \beta_0 + \beta_1 M + \beta_2 S + \beta_3 MS + \beta_4 \text{Age}_{baseline} \quad (\text{Equ. 2})$$

572 The weights were computed by taking the inverse of the predicted odds ratio for each
573 observation in the exposed group. To achieve a more efficient estimation of DE, we further
574 stabilized the weights by multiplying each individual’s exposure-mediator odds ratio by the
575 predicted odds of the exposure, where the mediator was evaluated at its reference value
576 (Nguyen et al. 2015).

577 Last, the IE was estimated by taking the difference between the total effect and the direct effect
578 on the scale used to obtain direct and total effects.

579 The required identifying conditions for IE, DE and TE within the IORW mediation approach
580 are no model misspecification, no measurement errors of exposure, mediator and outcome,
581 positivity, consistency and no unmeasured confounding for the effect of exposure on mediator,
582 mediator on outcome possibly affected by exposure, and exposure on outcome (Tchetgen
583 Tchetgen 2013, VanderWeele 2015). When all the above conditions are satisfied, the estimated
584 effects can be interpreted as causal effects.

585 The IORW can be extended to study the mediating effect of multiple mediators *en-bloc* by
586 simply adding the chosen mediators as predictors in the model for the exposure of Equ 2. This
587 is parsimonious as there is no need to specify a model for the joint conditional density of
588 mediators. Additionally, it has been shown that the identification of this joint IE does not
589 depend upon the causal order of the mediators and upon unmeasured confounding of mediator-
590 mediator associations (VanderWeele and Vansteelandt 2014, Steen et al. 2017).

591 In summary, to obtain estimates from the IORW method we (Nguyen et al. 2015): i) fitted a
592 logistic regression model for education given mediator(s), age at baseline and sex, with an
593 interaction between mediator(s) and sex; ii) computed stabilized weights for each participant
594 from the predicted odds ratios at step i; iii) estimated the direct effect via a weighted additive
595 hazard (or Cox) regression model with education, sex and their interaction as predictors; iv)
596 estimated the total effect via an additive hazard (or Cox) regression model with education, sex
597 and their interaction as predictors; v) estimate indirect effect as the difference between total and
598 direct effects; vi) generated 5,000 bootstrap draws with replacement to derive standard errors
599 for the estimands total and indirect effects.

600 Overall, the IORW method has three features that were relevant to our study: i) it does not
601 require to specify a model for the joint conditional density of multiple mediators but mediators
602 can just be incorporated into the model of the exposure (e.g. Equ. 2); ii) it accommodates the
603 potential interaction between exposure and mediator without the need to parametrize it; and iii)
604 it offers a sensitivity analysis for unmeasured (possibly exposure-induced) confounding of the
605 mediator-outcome relationship (Nguyen et al. 2015).

606

607 *Meta-analytic method*

608 We estimated total and indirect effects in each cohort study and then we pooled those estimates
609 via the Hartung-Knapp inverse variance random effect meta-analytic model (Hartung and
610 Knapp 2001). This method has been shown to provide reliable coverage accuracy in a small
611 number study setting (Guolo and Varin 2017). However, since the Hartung-Knapp method can
612 provide overly narrow confidence intervals when single-cohort effects are homogenous, we
613 reported confidence intervals based on the fixed-effect model whenever that was the case as
614 suggested by Wiksten et al. (Wiksten, Rucker and Schwarzer 2016).

615 The inter-study variance τ^2 was estimated via the DerSimonian-Laird method implemented in
616 the *meta* (Schwarzer, Carpenter and Rücker 2015) R package. The potential heterogeneity
617 across studies was assessed through the τ^2 and I^2 statistics, the former lying between 0 and 100
618 with higher between-study heterogeneity corresponding to higher values. We report these
619 statistics in the forest plots at the end of the

620 **Supplementary Material.**

621

622 *Sensitivity analyses*

623 We run various sensitivity analyses to investigate the robustness of our findings with respect to
624 assumptions of confounding, measurement error and age-invariant effects posited by our
625 implementation of the mediation method, and to assess whether the mediation by epigenetic
626 ageing biomarkers is related to DNA methylation levels beyond cellular heterogeneity in blood.
627 Specifically, firstly we included childhood socioeconomic conditions as a potential confounder
628 in a subset of four cohort studies (EPIC-IT, MESA, NICOLA, TILDA) where this information
629 was available. This sensitivity analysis allowed us to investigate whether findings are robust
630 with respect to this potential confounding of the exposure-outcome, exposure-mediator and
631 mediator-outcome relationship.

632 Secondly, we run the sensitivity analysis proposed by Tchetgen Tchetgen and Shpitser
633 (Tchetgen and Shpitser 2012) to assess the potential bias induced by unmeasured (possibly
634 exposure-induced) confounding of the mediator-outcome relationship. This sensitivity analysis
635 quantifies the potential bias in the indirect effect by offsetting the observed outcome by a value
636 encoded in a selection bias function. We chose the selection bias function detailed in Appendix
637 2 of the manuscript by Nguyen et al. (Nguyen et al. 2015). This selection bias function depended
638 on the sensitivity parameter $\rho(S)$ defined as

639 $\rho(S) = E[Y(a^*, M) | M = 1, S] - E[Y(a^*, M) | M = 0, S]$

640 whereby the mediator M (epigenetic ageing) was binary. The $\rho(S)$ captured the extent to which
641 confounding may lead to differences in the average potential survival age of participants having
642 lower educational attainment and elevated epigenetic age (epigenetic ageing > 0), compared to
643 the average potential survival age of participants having lower educational attainment and
644 mitigated epigenetic age (epigenetic ageing < 0). Thus, by varying $\rho(S)$ one may obtain a
645 sensitivity analysis for confounding of the mediator. We estimated the indirect effect for values
646 of $\rho(S)$ ranging from -5 to 5 years.

647 Thirdly, we assessed the impact of measuring epigenetic ageing biomarkers with error, as
648 indirect effects can be biased in presence of an imperfectly measured mediator (VanderWeele,
649 Valeri and Ogburn 2012). To accommodate a non-differential measurement error in the
650 mediator, the model for the exposure in Equ. 2 implemented the SIMEX simulation-based
651 approach for measurement error correction (Valeri, Lin and VanderWeele 2014). From a
652 previous validation study of reproducibility in estimating epigenetic ageing biomarkers from
653 DNA methylation in blood (McEwen et al. 2018), we hypothesized that errors were of the order
654 of 3 years.

655 Fourthly, we estimated total and indirect effects by incrementally right censoring survival age
656 at 70, 75, 80, and 85 years to assess the validity of findings based on our assumption of constant
657 effects (Stensrud and Hernán 2020).

658 Lastly, we applied a sequential mediation approach (VanderWeele and Vansteelandt 2014) to
659 assess the path-specific effect mediated by epigenetic ageing biomarkers and not leukocyte
660 composition in blood. Specifically, we estimated the indirect effect when only leukocyte
661 composition in blood was included as a mediator in the first step, followed by an estimation of
662 the indirect effect when both leukocyte composition and epigenetic ageing biomarkers in blood

663 were included as mediators. Given the posited causal structure in **Supplementary Figure 6**, a
664 substantive additional indirect effect provided by both mediators suggests epigenetic ageing
665 explains educational inequalities independently of leukocyte composition in blood, or in other
666 words that there is mediation by levels of DNA methylation in blood beyond the proportion of
667 leukocyte types in blood. We run this sensitivity analysis on all cohorts but MESA, as therein
668 DNA methylation had been measured from monocytes.

669

670

671

672

673

674

675

676

677

678

679

680

681

682

683

684 **Supplementary Table 1.** Categorization of education.

Cohort	Lower education	Higher education
EPIC-IT	None, primary school, lower secondary school, vocational school	Higher secondary school, BSc, MSc
ESTHER	=< 9 years (No education, or primary")	>=10-11 years ("secondary education, high school or more")
KORA	=< 9 years (No education, or primary")	>=10-11 years ("secondary education, high school or more")
MCCS	Never attended school, attended some primary school, completed primary school, obtained other qualifications such as a trade certificate, attended some high/technical school	Completed high school or technical school, completed a tertiary degree or diploma, completed some study towards a tertiary degree or diploma
MESA	No schooling; grades 1-8; grades 9-11	Completed high-school/GED; some college but not degree; technical school certificate; associate degree, bachelor's degree; graduate or professional school
NICOLA	None, some primary (not complete), Primary or equivalent, GCSE/Intermediate/junior/group certificate or equivalent, A-level/Leaving certificate or equivalent	Diploma/certificate, Primary degree, Postgraduate/higher degree
RS	Primary education; intermediate general and lower vocational education	Higher general and intermediate vocational education; higher vocational education and university
TILDA	None, some primary (not complete), Primary or equivalent, Intermediate/junior/group certificate or equivalent, Leaving certificate or equivalent	Diploma/certificate, Primary degree, Postgraduate/higher degree

685

686

687

688 **Supplementary Table 2.** Country, birth year and time-line for collection of exposure and
 689 mediator data in each cohort. The reported range of birth years corresponds to the 10th and 90th
 690 quantiles of the distribution.

Cohort	Country	Birth year	Exposure	Mediators
EPIC-IT	Italy	1933 – 1952	1993 –1998	1993 – 1998
ESTHER	Germany	1929 – 1948	2000 – 2001	2000 – 2001
KORA	Germany	1934 – 1958	1999 – 2001	2006 – 2008
MCCS	Australia	1913 – 1936	1990 – 1994	1990 – 1994
MESA	USA	1929 – 1954	2000 – 2002	2010 – 2012
NICOLA	Northern Ireland	1937 – 1962	2014 – 2016	2014 – 2016
RS	The Netherlands	1937 – 1956	2007 – 2012	2007 – 2012
TILDA	Ireland	1936 – 1958	2009 – 2011	2009 – 2011

691

692 **Supplementary Table 3. Mediation by unhealthy lifestyle, morbidities, and epigenetic**
 693 **ageing in women.** Absolute (hazard difference per 10,000 person-years) and relative (hazard
 694 ratio) size of total effect of lower (vs higher) educational attainment on all-cause mortality, and
 695 of indirect effects by unhealthy lifestyle and morbidities (LM) and epigenetic ageing
 696 biomarkers (Horvath DNAmAA, Hannum DNAmAA, DNAmPhenoAA, and
 697 DNAmGrimAA). All effects are pooled estimates of single cohort’s effects through a weighted
 698 inverse variance meta-analytic model. The total number of participants/deaths across cohorts is
 699 6,175 / 964.

EFFECTS	Hazard difference (95% CI)	Hazard ratio (95% CI)
Total effect	6 (-14 to 26)	1.17 (1.05 to 1.30)
Indirect effect by LM	-5 (-12 to 2)	1.02 (0.94 to 1.11)
Indirect effect by LM and Horvath DNAmAA	-4 (-10 to 2)	1.03 (0.98 to 1.02)
Indirect effect by LM and Hannum DNAmAA	-5 (-11 to 2)	1.02 (0.93 to 1.12)
Indirect effect by LM and DNAmPhenoAA	-5 (-11 to 1)	1.02 (0.95 to 1.09)
Indirect effect by LM and DNAmGrimAA	-3 (-11 to 4)	1.03 (0.95 to 1.12)

700

701

702

703

704

705

706

707

708

709

710

711

712 **Supplementary Table 4. Potential confounding by childhood socioeconomic conditions.**
713 Absolute effects quantifying total effect of education (lower vs higher) on all-cause mortality
714 and indirect effect by epigenetic ageing biomarkers (Horvath DNAmAA, Hannum DNAmAA,
715 DNAmPhenoAA, and DNAmGrimAA) when childhood socioeconomic conditions (CSC) were
716 included as an additional potential confounding. All effects are pooled estimates of single
717 cohort's hazard ratios through a weighted inverse variance meta-analytic model. The total
718 number of participants/deaths across EPIC-IT, MESA, NICOLA, and TILDA cohorts is 2,370
719 / 290 for men and 2,674 / 225 for women.

EFFECTS	Men		Women	
	Without CSC	With CSC	Without CSC	With CSC
Total effect	56 (32 to 79)	57 (28 to 85)	6 (-11 to 23)	6 (-11 to 24)
Indirect effect by Horvath DNAmAA	12 (4 to 20)	13 (8 to 17)	-5 (-8 to -1)	-4 (-7 to -1)
Indirect effect by Hannum DNAmAA	17 (9 to 25)	19 (12 to 25)	-5 (-9 to -1)	-4 (-9 to 0)
Indirect effect by DNAmPhenoAA	19 (9 to 30)	21 (14 to 27)	-5 (-8 to -2)	-5 (-8 to -2)
Indirect effect by DNAmGrimAA	29 (21 to 38)	30 (22 to 38)	-1 (-15 to 13)	1 (-13 to 14)

720

721

722

723

724

725

726

727

728

729

730

731

732

733

734

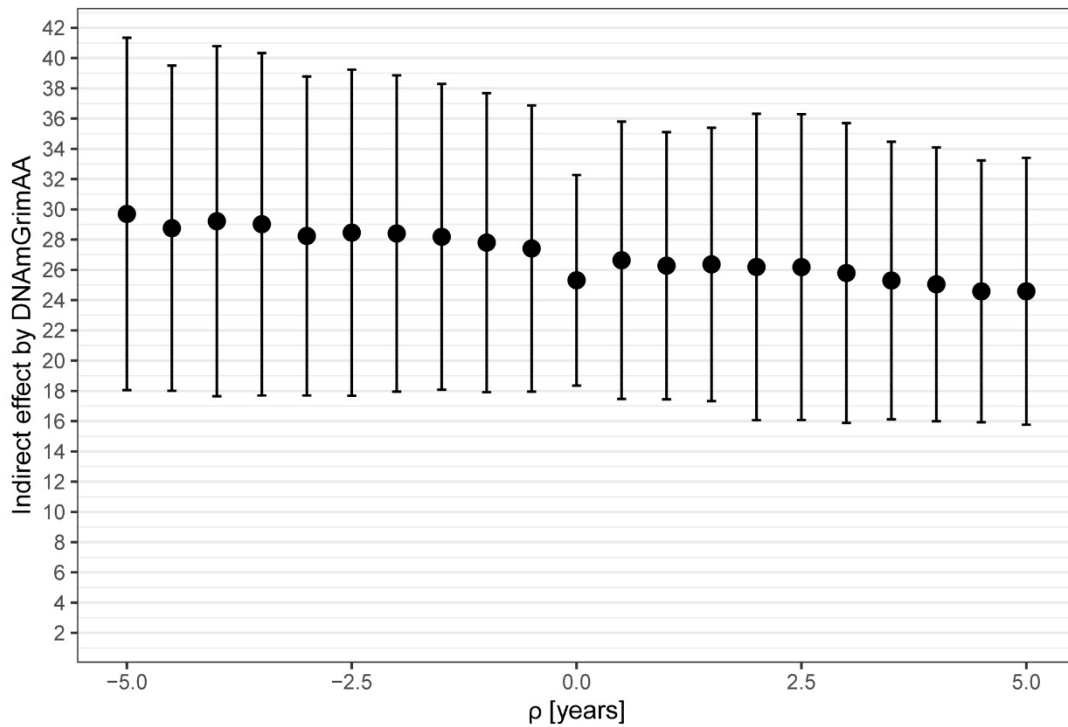
735

736

737 **Supplementary Table 5. Path-specific indirect effect by epigenetic ageing independent of**
738 **leukocyte composition in men.** Absolute (hazard difference per 10,000 person-years) size of
739 total effect of lower (vs higher) educational attainment on all-cause mortality, and for indirect
740 effects by leukocyte composition (LC) and epigenetic ageing in blood. Four epigenetic ageing
741 biomarkers based on different epigenetic clocks estimators are reported: Horvath DNAmAA,
742 Hannum DNAmAA, DNAmPhenoAA, and DNAmGrimAA. All effects are pooled estimates
743 of single cohort's hazards through a weighted inverse variance meta-analytic model. The study
744 MESA is not included as therein epigenetic ageing biomarkers were computed from DNA
745 methylation in monocytes. The total number of participants/deaths across cohorts is 5,865 /
746 1,559.

EFFECTS	Hazard difference (95% CI)
Total effect	57 (39 to 74)
Indirect effect by LC	16 (10 to 22)
Indirect effect by LC and Horvath DNAmAA	15 (8 to 22)
Indirect effect by Horvath DNAmAA but not LC	0 (-1 to 1)
Indirect effect by LC and Hannum DNAmAA	18 (12 to 24)
Indirect effect by Hannum DNAmAA but not LC	2 (0 to 4)
Indirect effect by LC and DNAmPhenoAA	21 (14 to 27)
Indirect effect by DNAmPhenoAA but not LC	5 (2 to 7)
Indirect effect by LC and DNAmGrimAA	34 (26 to 43)
Indirect effect by DNAmGrimAA and not LC	18 (10 to 25)

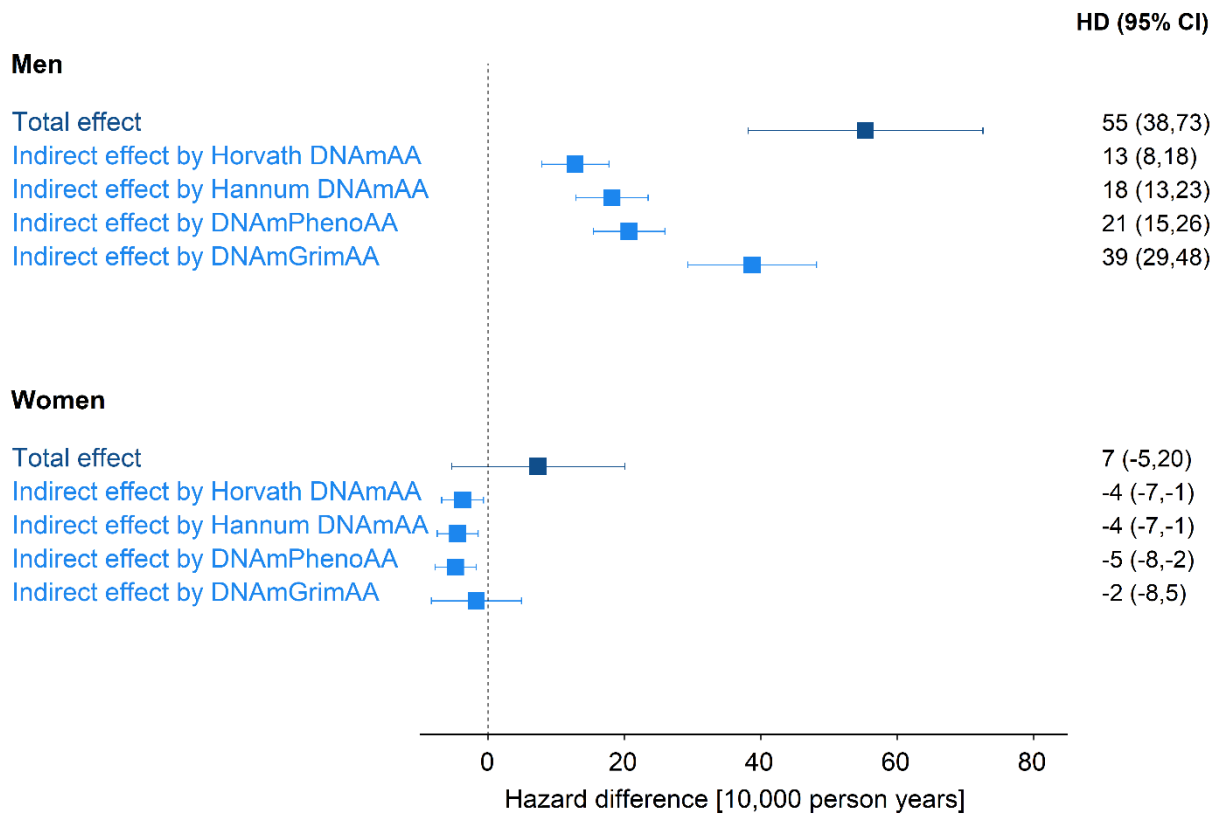
747
748
749
750
751
752
753



754

755 **Supplementary Figure 1. Indirect effect by epigenetic ageing biomarker DNAmGrimAA**
 756 **in men as a function of bias (ρ) in the outcome due to unmeasured confounding of the**
 757 **mediator-outcome relationship.** Rho represents the counterfactual difference in average
 758 survival age for being exposed to lower education and elevated epigenetic age (positive values
 759 of DNAmGrimAA) compared to being exposed to lower education and mitigated epigenetic
 760 age (negative values of DNAmGrimAA). A positive value of ρ indicates a delayed survival age
 761 due to a hypothetical intervention for slowing or mitigating epigenetic ageing, while a negative
 762 value indicates the opposite. Pooled excess deaths per 10,000 person-years and 95%
 763 compatibility intervals (CI) are reported. All effects are pooled estimates of single cohort's
 764 hazard differences through a weighted inverse variance meta-analytic model. The total number
 765 of participants/deaths across cohorts is 6,477 / 1,638.

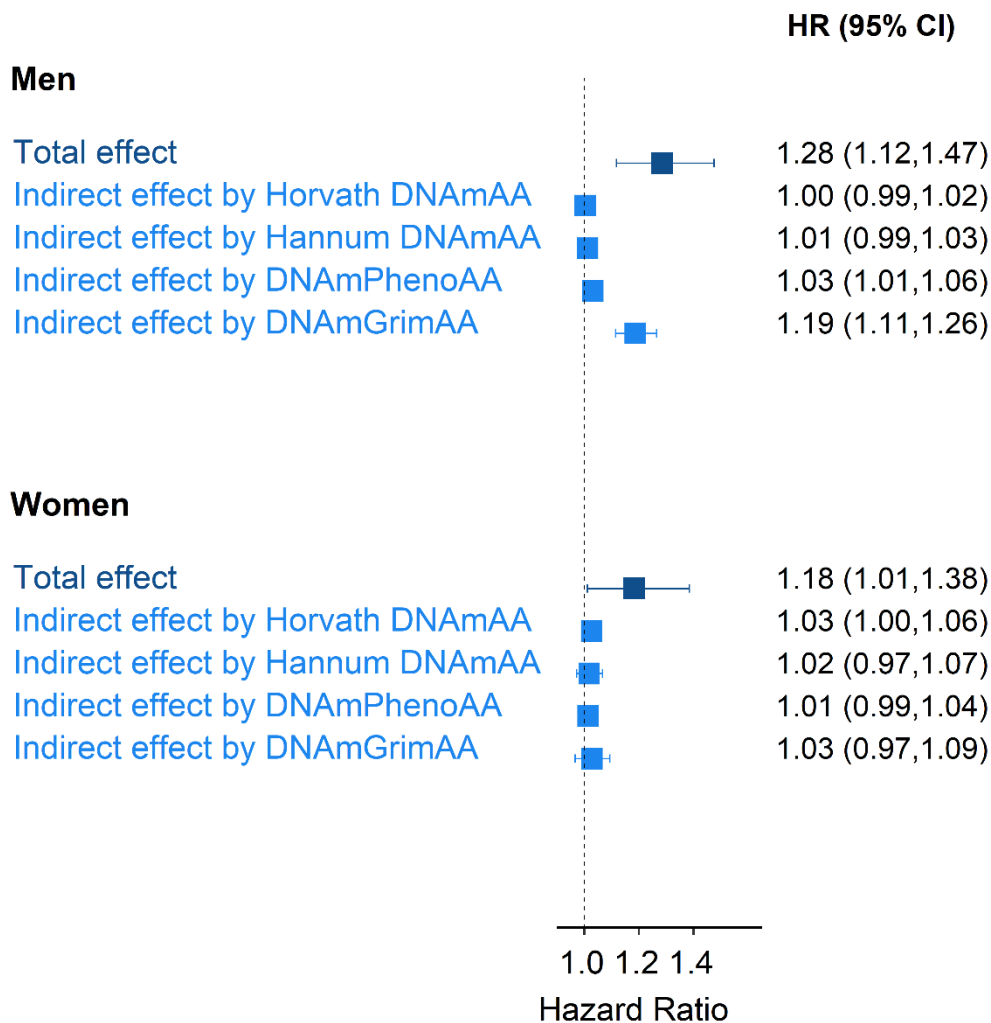
766



767

768 **Supplementary Figure 2. Educational inequalities and mediation by epigenetic ageing**
 769 **biomarkers on the absolute scale when considering a potential measurement error of three**
 770 **years in the assessment of the biomarkers.** Excess deaths per 10,000 person-years and 95%
 771 compatibility intervals (CI) are reported for the total effect of lower (vs higher) educational
 772 attainment on all-cause mortality, and for the indirect effect by epigenetic ageing biomarkers
 773 (Horvath DNAmAA, Hannum DNAmAA, DNAmPhenoAA, and DNAmGrimAA). All effects
 774 are pooled estimates of single cohort's hazard differences through a weighted inverse variance
 775 meta-analytic model. The total number of participants/deaths across cohorts is 6,477 / 1,638 for
 776 men and 6,544 / 1,002 for women.

777



778

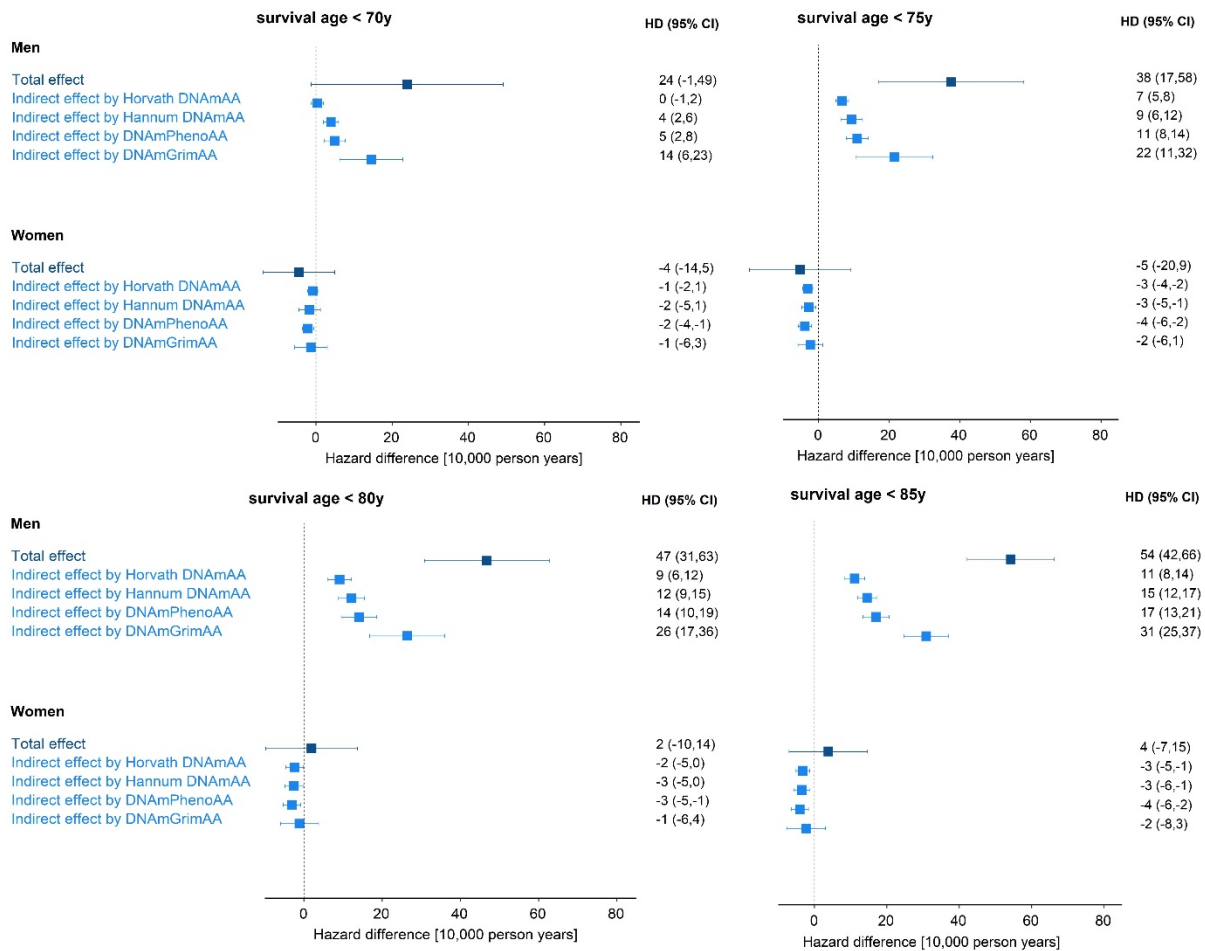
779 **Supplementary Figure 3. Educational inequalities and mediation by epigenetic ageing**
 780 **biomarkers on the relative scale when considering a potential measurement error of three**
 781 **years in the assessment of the biomarkers.** Hazard ratios and 95% compatibility intervals
 782 (CI) are reported for the total effect of lower (vs higher) educational attainment on all-cause
 783 mortality, and for the indirect effect by epigenetic ageing biomarkers (Horvath DNAmAA,
 784 Hannum DNAmAA, DNAmPhenoAA, and DNAmGrimAA). All effects are pooled estimates
 785 of single cohort's hazard ratios through a weighted inverse variance meta-analytic model. The
 786 total number of participants/deaths across cohorts is 6,477 / 1,638 for men and 6,544 / 1,002
 787 for women.

788

789

790

791

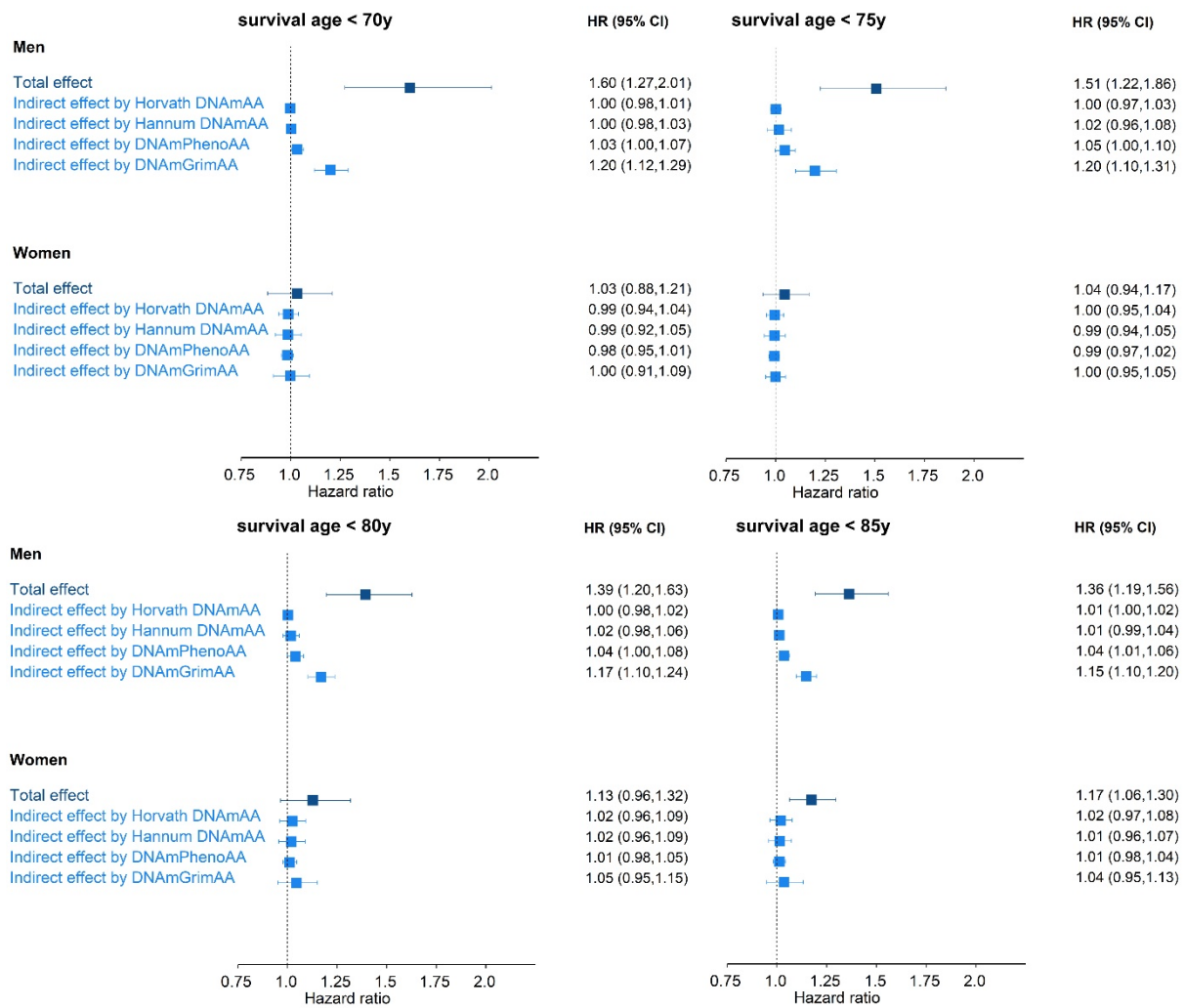


792

793 **Supplementary Figure 4. Educational inequalities and mediation by epigenetic ageing**
 794 **biomarkers on the absolute scale at incremental right censoring values of survival age.**
 795 Hazard difference per 10,000 person-years and 95% compatibility intervals (CI) are reported
 796 for the total effect of lower (vs higher) educational attainment on all-cause mortality, and for
 797 indirect effect by epigenetic ageing biomarkers (Horvath DNAmAA, Hannum DNAmAA,
 798 DNAmPhenoAA, and DNAmGrimAA) when survival age is right censored at 70y, 75y, 80y,
 799 and 85y (upper left, upper right, lower left, lower right panels, respectively). All effects are
 800 pooled estimates of single cohort's hazard differences through a weighted inverse variance
 801 meta-analytic model. The total number of participants/deaths across cohorts is 6,477 / 1,638 for
 802 men and 6,544 / 1,002 for women.

803

804



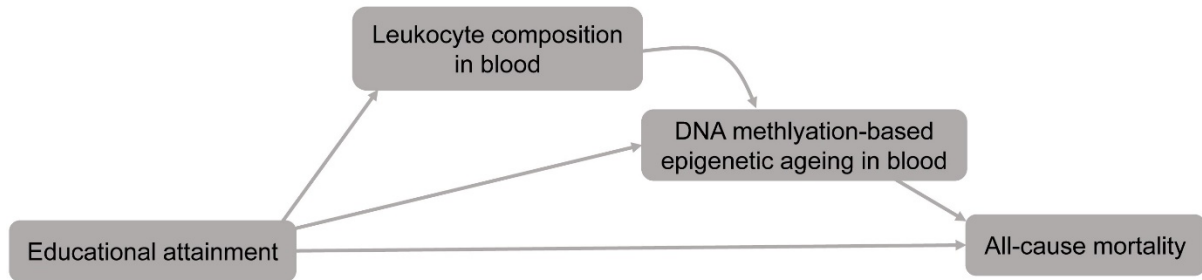
805

806 **Supplementary Figure 5. Educational inequalities and mediation by epigenetic ageing**
 807 **biomarkers on the relative scale at incremental right censoring values of survival age.**
 808 Hazard ratios and 95% compatibility intervals (CI) are reported for the total effect of lower (vs
 809 higher) educational attainment on all-cause mortality, and for indirect effect by epigenetic
 810 ageing biomarkers (Horvath DNAmAA, Hannum DNAmAA, DNAmPhenoAA, and
 811 DNAmGrimAA) when survival age is right censored at 70y, 75y, 80y, and 85y (upper left,
 812 upper right, lower left, lower right panels, respectively). All effects are pooled estimates of
 813 single cohort's hazard ratios through a weighted inverse variance meta-analytic model. The
 814 total number of participants/deaths across cohorts is 6,477 / 1,638 for men and 6,544 / 1,002
 815 for women.

816

817

818



819

820 **Supplementary Figure 6. Causal structure to assess the path-specific effect of epigenetic**
821 **ageing biomarkers independent of leukocyte composition in blood.** For the sake of
822 simplicity, we do not draw confounders (age and sex). Educational attainment represents the
823 exposure and all-cause mortality the outcome. Leukocyte composition in blood and DNA
824 methylation-based epigenetic ageing in blood are the mediators.

825

826

827

828

829

830

831

832

833

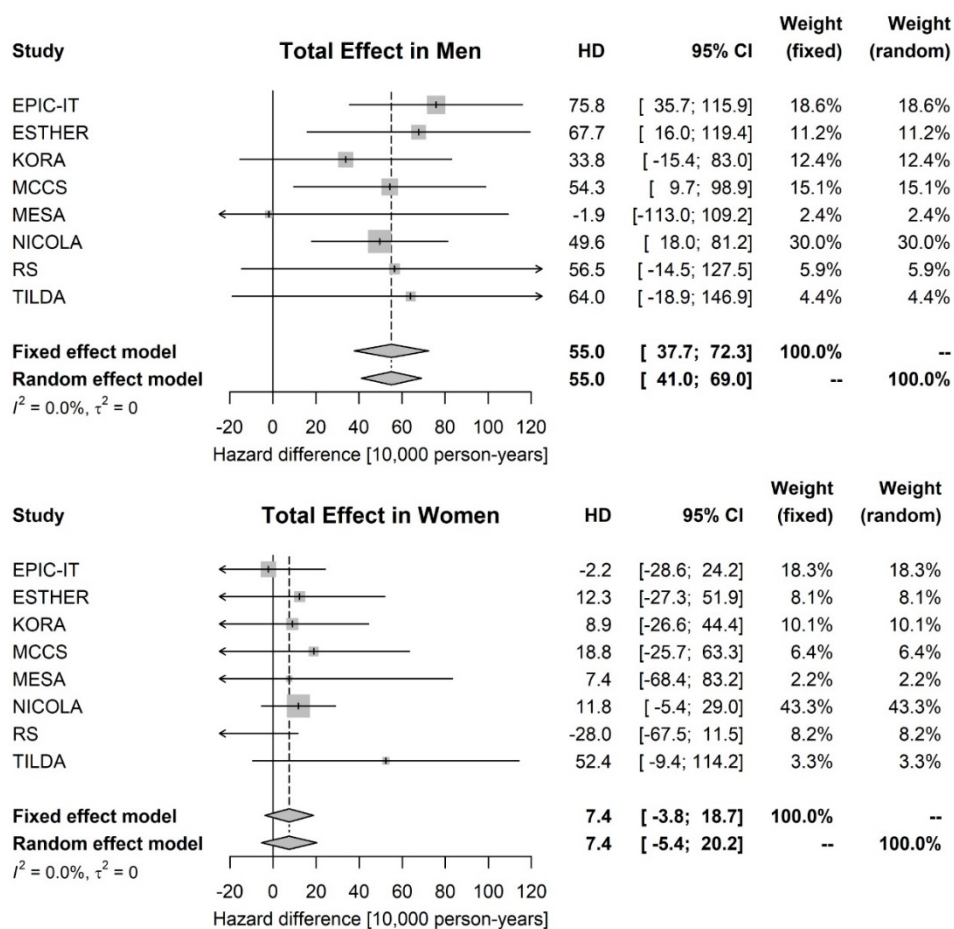
834

835

836

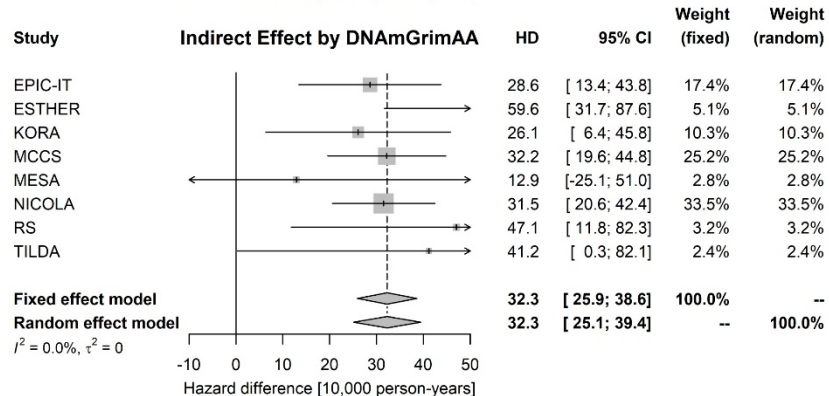
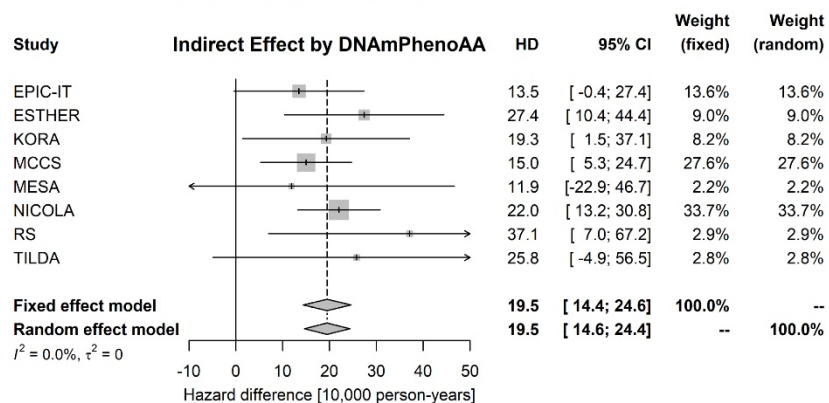
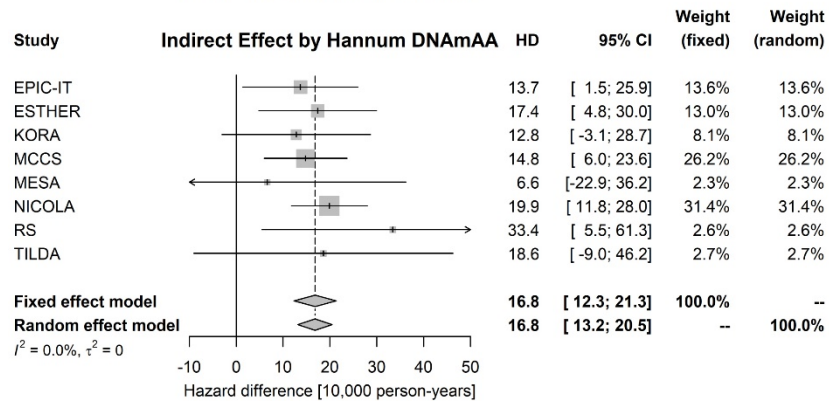
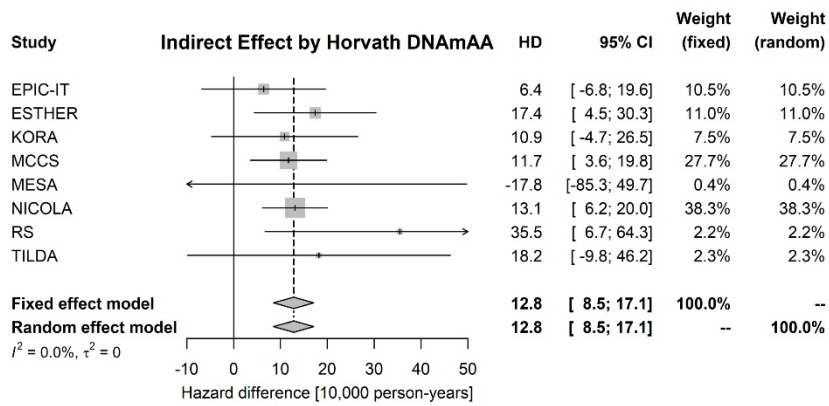
837

838



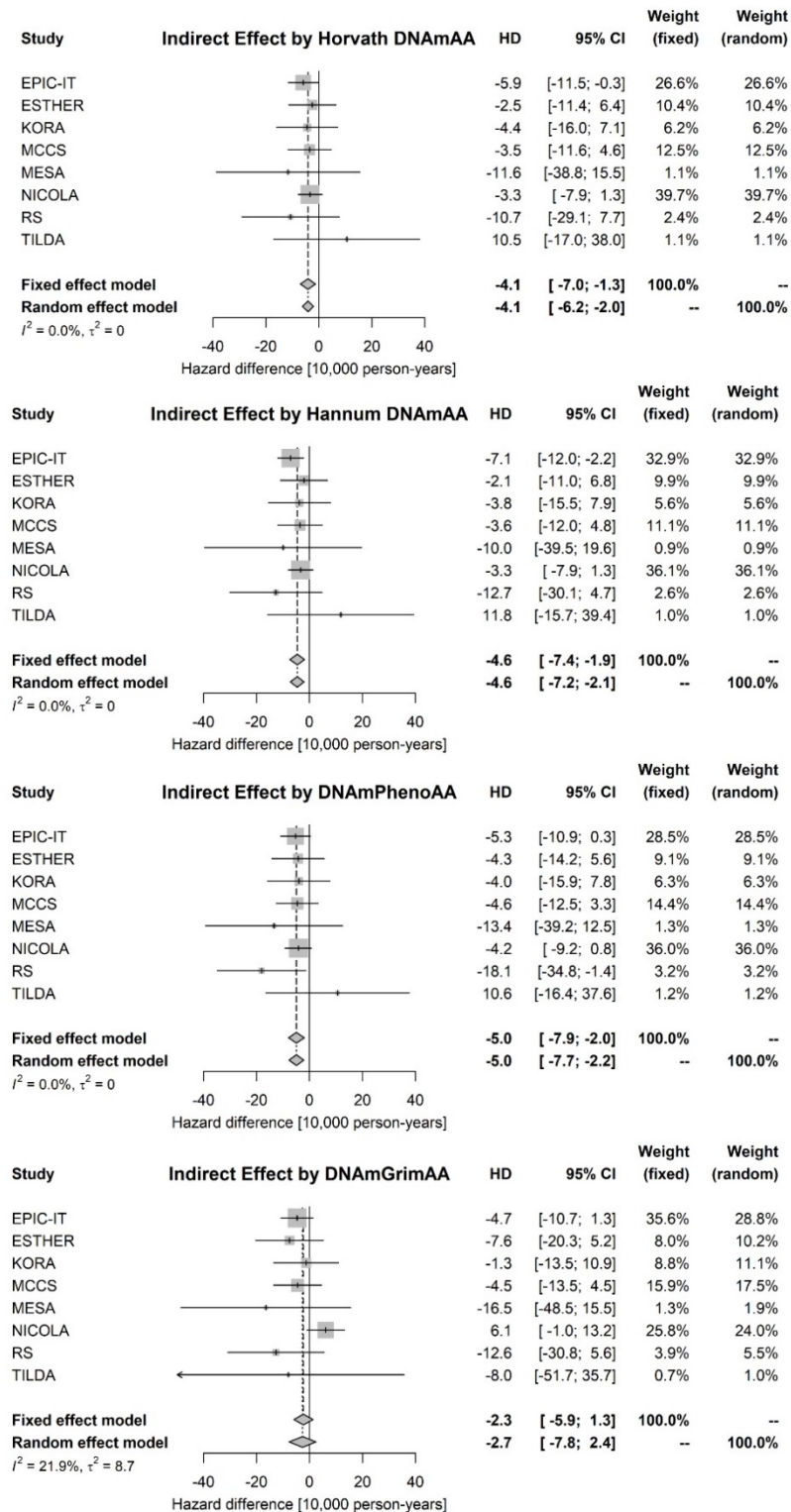
840

841 **Supplementary Figure 7. Forest plots of the total effect of educational attainment on all-**
 842 **cause mortality in men (top) and women (bottom) on the absolute scale.** Hazard difference
 843 (HD) per 10,000 person-years and 95% compatibility intervals (CI) are reported. Weight
 844 represents the contribution of each study to the pooled estimates (diamond) as computed by the
 845 fixed/random meta-analytic effect model. Heterogeneity across studies is quantified by *I*² and
 846 τ^2 .

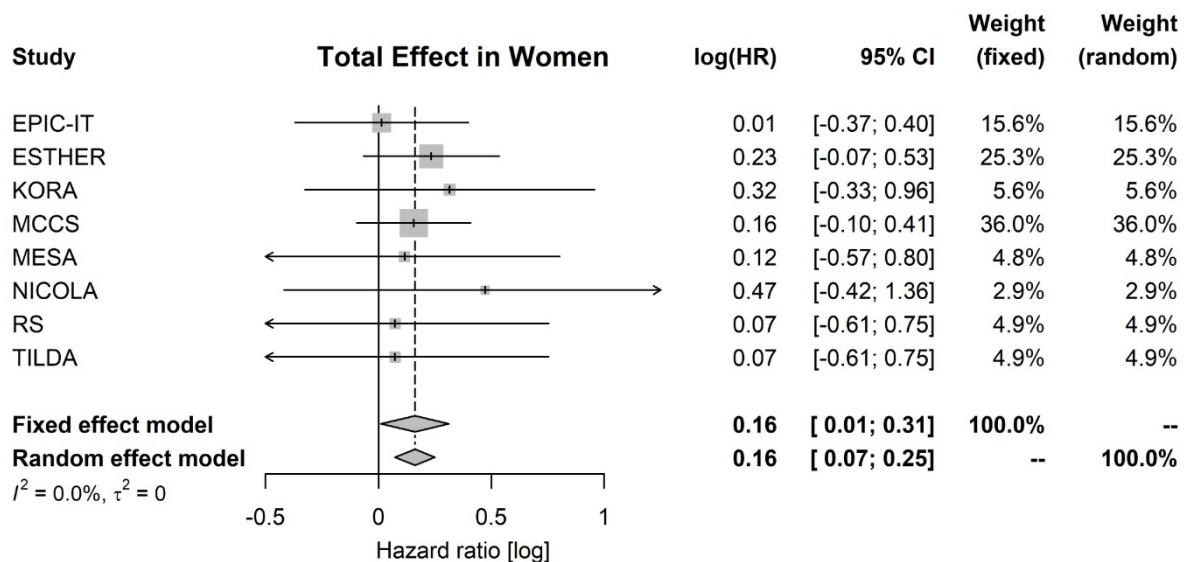
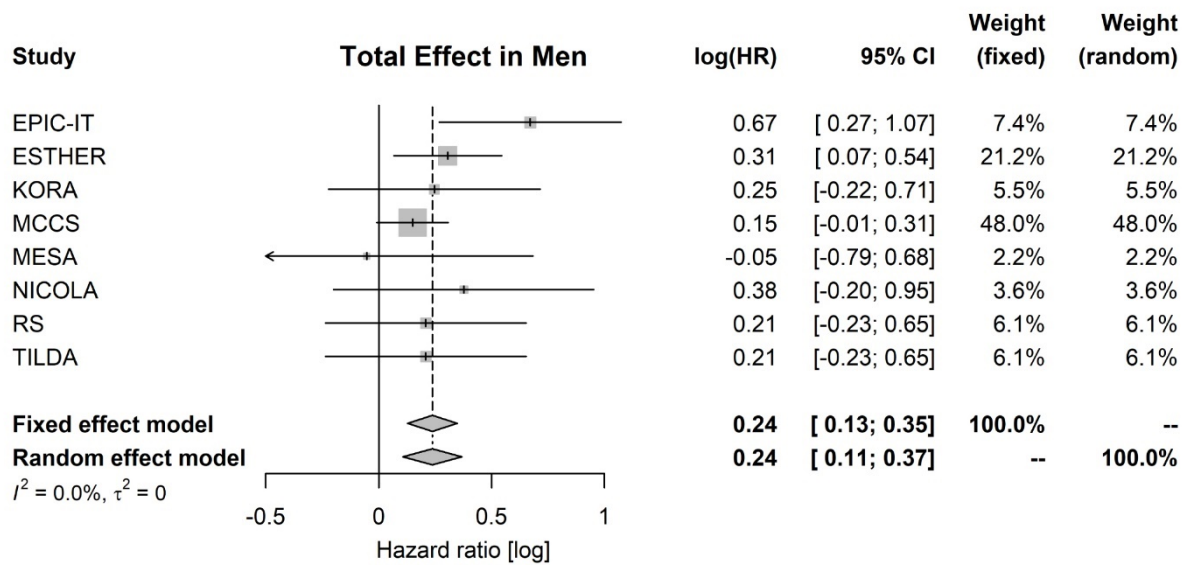


847

848 **Supplementary Figure 8. Forest plots of the indirect effect by epigenetic ageing**
 849 **biomarkers in men on the absolute scale.** Hazard difference (HD) per 10,000 person-years
 850 and 95% compatibility intervals (CI) are reported. Weight represents the contribution of each
 851 study to the pooled estimates (diamond) as computed by the fixed/random meta-analytic effect
 852 model. Heterogeneity across studies is quantified by I^2 and τ^2 .



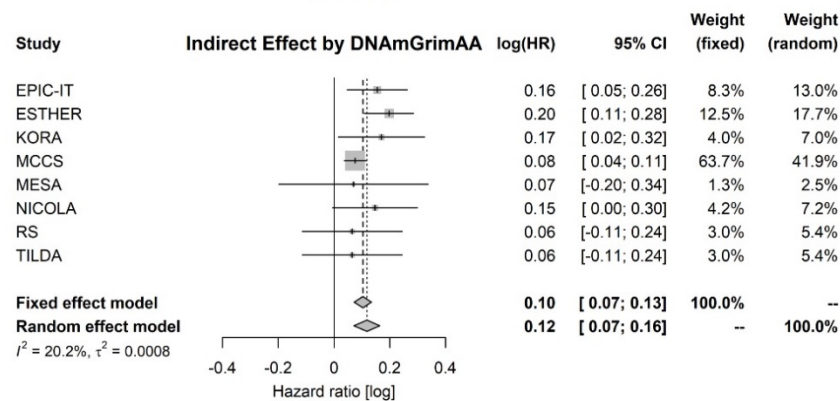
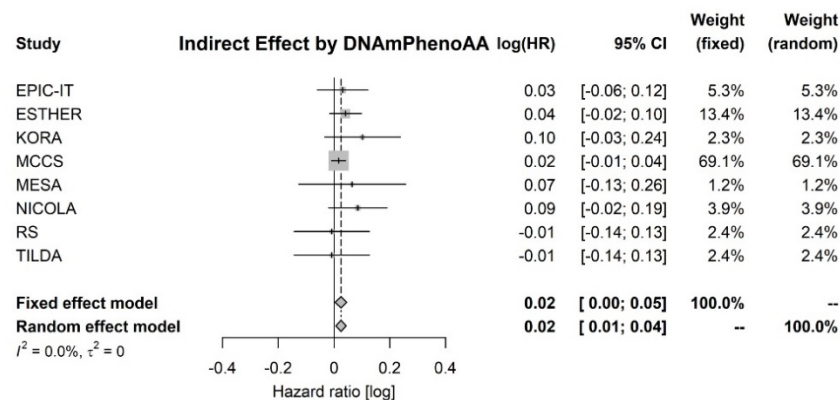
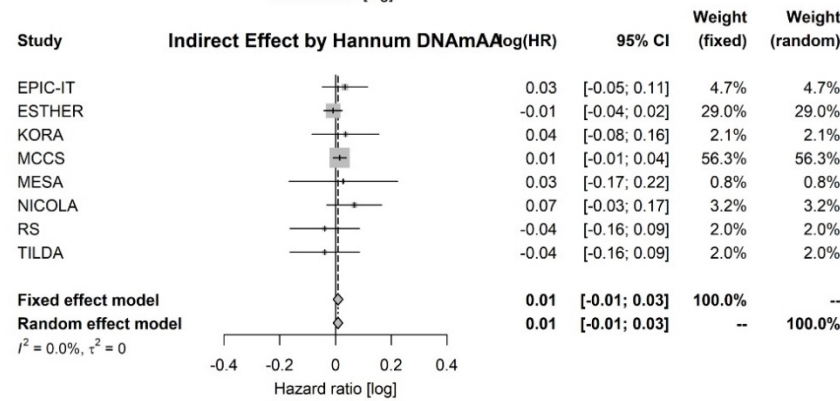
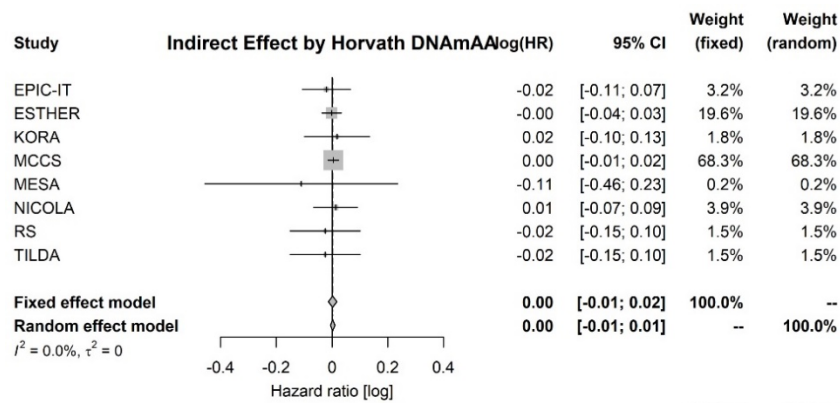
855 **Supplementary Figure 9. Forest plots of the absolute indirect effect by epigenetic ageing**
 856 **biomarkers in women on the absolute scale.** Hazard difference (HD) per 10,000 person-years
 857 and 95% compatibility intervals (CI) are reported. Weight represents the contribution of each
 858 study to the pooled estimates (diamond) as computed by the fixed/random meta-analytic effect
 859 model. Heterogeneity across studies is quantified by I^2 and τ^2 .



860

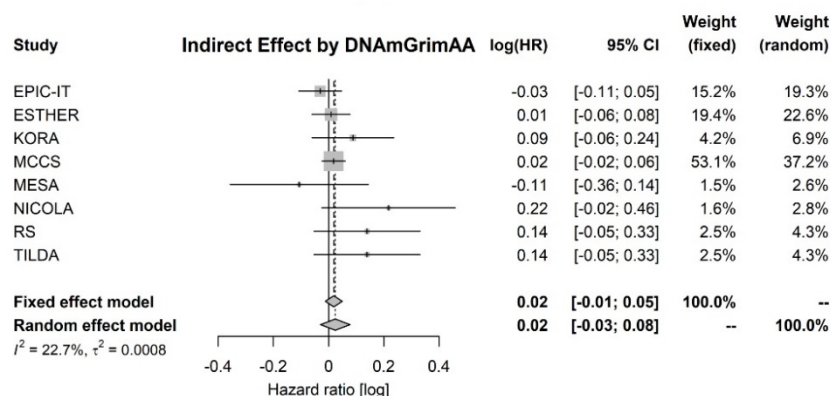
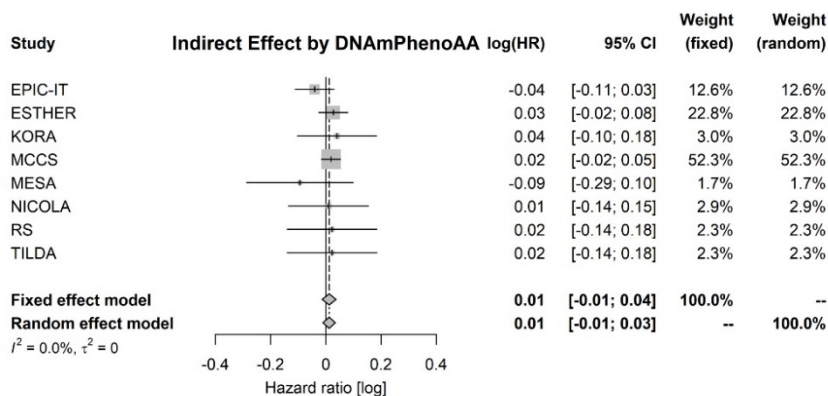
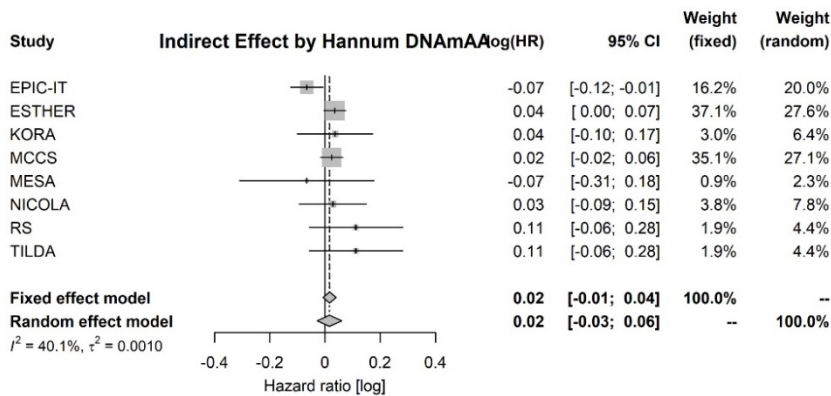
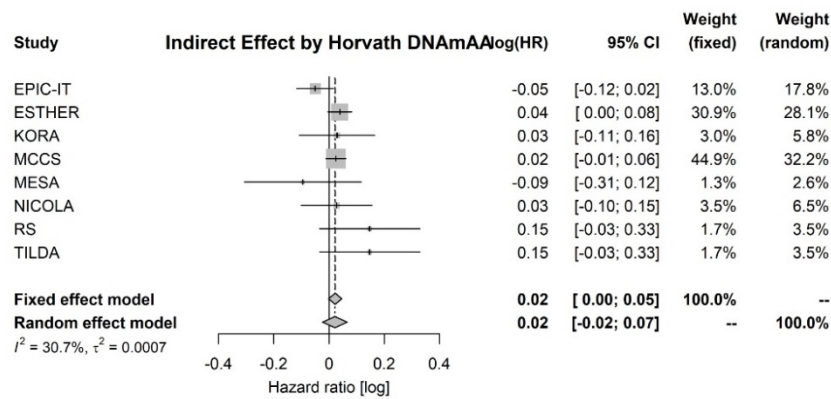
861 **Supplementary Figure 10. Forest plots of the relative effect of educational attainment on**
 862 **all-cause mortality in men (top) and women (bottom) on the relative scale.** Hazard ratio
 863 (HR) and 95% compatibility intervals (CI) are reported. Weight represents the contribution of
 864 each study to the pooled estimates (diamond) as computed by the fixed/random meta-analytic
 865 effect model. Heterogeneity across studies is quantified by I^2 and τ^2 .

866



867

868 **Supplementary Figure 11. Forest plots of the relative indirect effect by epigenetic ageing**
 869 **biomarkers in men on the relative scale.** Hazard ratio (HR) and 95% compatibility intervals
 870 (CI) are reported. Weight represents the contribution of each study to the pooled estimates
 871 (diamond) as computed by the fixed/random meta-analytic effect model. Heterogeneity across
 872 studies is quantified by I^2 and τ^2 .



873

874 **Supplementary Figure 12. Forest plots of the relative indirect effect by epigenetic ageing**
 875 **biomarkers in women on the relative scale.** Hazard ratio (HR) and 95% compatibility
 876 intervals (CI) are reported. Weight represents the contribution of each study to the pooled
 877 estimates (diamond) as computed by the fixed/random meta-analytic effect model.
 878 Heterogeneity across studies is quantified by I^2 and τ^2 .

Cohort	
EPIC-IT	EPIC-Italy was funded by the Associazione Italiana Ricerca contro il Cancro (AIRC).
ESTHER	The ESTHER study was funded by the Baden-Württemberg State Ministry of Science, Research and Arts (Stuttgart, Germany), the German Federal Ministry of Education and Research (Berlin, Germany), the German Federal Ministry of Family, Senior Citizens, Women and Youth (Berlin, Germany) and the Saarland State Ministry of Social Affairs, Health, Women and Family (Saarbrücken, Germany). The analyses for this project were supported by a grant from the German Cancer Aid (No. 70113330).
KORA	The KORA study was initiated and financed by the Helmholtz Zentrum München – German Research Center for Environmental Health, which is funded by the German Federal Ministry of Education and Research (BMBF) and by the State of Bavaria. Furthermore, KORA research has been supported within the Munich Center of Health Sciences (MC-Health), Ludwig-Maximilians-Universität, as part of LMUinnovativ.
MCCS	Melbourne Collaborative Cohort Study (MCCS) cohort recruitment was funded by VicHealth and Cancer Council Victoria. The MCCS was further augmented by Australian National Health and Medical Research Council grants 209057, 396414 and 1074383 and by infrastructure provided by Cancer Council Victoria. Cases and their vital status were ascertained through the Victorian Cancer Registry and the Australian Institute of Health and Welfare, including the National Death Index and the Australian Cancer Database.
MESA	<p>MESA and the MESA SHARe project are conducted and supported by the National Heart, Lung, and Blood Institute (NHLBI) in collaboration with MESA investigators. Support for MESA is provided by contracts 75N92020D00001, HHSN268201500003I, N01-HC-95159, 75N92020D00005, N01-HC-95160, 75N92020D00002, N01-HC-95161, 75N92020D00003, N01-HC-95162, 75N92020D00006, N01-HC-95163, 75N92020D00004, N01-HC-95164, 75N92020D00007, N01-HC-95165, N01-HC-95166, N01-HC-95167, N01-HC-95168, N01-HC-95169, UL1-TR-000040, UL1-TR-001079, UL1-TR-001420, UL1-TR-001881, and DK063491. The MESA Epigenomics & Transcriptomics Studies were funded by NIH grants 1R01HL101250, 1RF1AG054474, R01HL126477, R01DK101921, and R01HL135009. Analysis was partially supported by R01HL141292.</p> <p>This manuscript has been reviewed by MESA for scientific content and consistency of data interpretation with previous MESA publications.</p>
NICOLA	We are grateful to all the participants of the NICOLA Study, and the whole NICOLA team, which includes nursing staff, research scientists, clerical staff, computer and laboratory technicians, managers and receptionists. The Atlantic Philanthropies, the Economic and Social Research Council, the UKCRC Centre of Excellence for Public Health Northern Ireland, the Centre for

	Ageing Research and Development in Ireland, the Office of the First Minister and Deputy First Minister, the Health and Social Care Research and Development Division of the Public Health Agency, the Wellcome Trust/Wolfson Foundation and Queen's University Belfast provide core financial support for NICOLA. The authors alone are responsible for the interpretation of the data and any views or opinions presented are solely those of the authors and do not necessarily represent those of the NICOLA Study team.
RS	The Rotterdam Study (RS) is supported by grants from the Municipality of Rotterdam, the NESTOR program for research in the elderly (Ministry of Health and Ministry of Education), the Netherlands Prevention Fund, the Netherlands Organization for scientific research (NWO), the Netherlands Heart Foundation and the Rotterdam Medical Research Foundation (ROMERES).
TILDA	Funding for the TILDA project was supported by the Irish Government, the Atlantic Philanthropies, and Irish Life plc.

881

882 *Ethical oversight*

Cohort name	Ethical Review Board / Institutional Review Board	Decision
EPIC Italy	Ethical review board of the International Agency for Research on Cancer (IARC)	Approved
ESTHER	Ethics committees of the University of Heidelberg and of the Medical Association of Saarland	Approved
MCCS	The Cancer Council Victoria's Human Research Ethics Committee	Approved
KORA	The Bavarian Chamber of Physicians Ethics Board	Approved
MESA	Institutional review boards (IRB) at each participating centre and Johns Hopkins School of Medicine IRB	Approved
NICOLA	the School of Medicine, Dentistry and Biomedical Sciences Ethics Committee, Queen's University Belfast	Approved
Rotterdam Study	Medical ethics committee of the Erasmus University Medical Centre, Rotterdam	Approved
TILDA	Faculty of Health Sciences Research Ethics Committee in Trinity College, Dublin	Approved
<p>Each study was performed in accordance with the Declaration of Helsinki, including written informed consent from all participants.</p>		

883
884
885
886
887
888
889
890
891
892
893
894

895 **References**

- 896 Aryee, M. J., A. E. Jaffe, H. Corrada-Bravo, C. Ladd-Acosta, A. P. Feinberg, K. D. Hansen & R. A. Irizarry
 897 (2014) Minfi: a flexible and comprehensive Bioconductor package for the analysis of Infinium
 898 DNA methylation microarrays. *Bioinformatics*, 30, 1363-9.
- 899 Baglietto, L., E. Ponzi, P. Haycock, A. Hodge, M. Bianca Assumma, C. H. Jung, J. Chung, F. Fasanelli, F.
 900 Guida, G. Campanella, M. Chadeau-Hyam, K. Grankvist, M. Johansson, U. Ala, P. Provero, E.
 901 M. Wong, J. Joo, D. R. English, N. Kazmi, E. Lund, C. Faltus, R. Kaaks, A. Risch, M. Barrdahl, T.
 902 M. Sandanger, M. C. Southey, G. G. Giles, P. Vineis, S. Polidoro, C. L. Relton & G. Severi (2017)
 903 DNA methylation changes measured in pre-diagnostic peripheral blood samples are
 904 associated with smoking and lung cancer risk. *Int J Cancer*, 140, 50-61.
- 905 Burns, F, G. Carney, S. Cruise, P. Devine, A. Devlin, M. Donnelly, D. French, F. Kee, L. Montgomery, D.
 906 O'Reilly, A. Scott & M. Tully. 2017. Early key findings from a study of older people in Northern
 907 Ireland. The NICOLA Study. Belfast: Queen's University, Belfast.
- 908 Campanella, G., S. Polidoro, C. Di Gaetano, G. Fiorito, S. Guarrera, V. Krogh, D. Palli, S. Panico, C.
 909 Sacerdote, R. Tumino, P. Elliott, G. Matullo, M. Chadeau-Hyam & P. Vineis (2015) Epigenetic
 910 signatures of internal migration in Italy. *Int J Epidemiol*, 44, 1442-1449.
- 911 Du, P., W. A. Kibbe & S. M. Lin (2008) lumi: a pipeline for processing Illumina microarray.
 912 *Bioinformatics*, 24, 1547-8.
- 913 Dugué, P. A., J. K. Bassett, J. E. Joo, L. Baglietto, C. H. Jung, E. M. Wong, G. Fiorito, D. Schmidt, E.
 914 Makalic, S. Li, M. Moreno-Betancur, D. D. Buchanan, P. Vineis, D. R. English, J. L. Hopper, G.
 915 Severi, M. C. Southey, G. G. Giles & R. L. Milne (2018) Association of DNA Methylation-Based
 916 Biological Age With Health Risk Factors and Overall and Cause-Specific Mortality. *Am J*
 917 *Epidemiol*, 187, 529-538.
- 918 Dugué, P. A., M. T. Brinkman, R. L. Milne, E. M. Wong, L. M. FitzGerald, J. K. Bassett, J. E. Joo, C. H.
 919 Jung, E. Makalic, D. F. Schmidt, D. J. Park, J. Chung, A. D. Ta, D. M. Bolton, A. Lonie, A.
 920 Longano, J. L. Hopper, G. Severi, R. Saffery, D. R. English, M. C. Southey & G. G. Giles (2016)
 921 Genome-wide measures of DNA methylation in peripheral blood and the risk of urothelial
 922 cell carcinoma: a prospective nested case-control study. *Br J Cancer*, 115, 664-73.
- 923 Galobardes, B., J. Lynch & G. D. Smith (2007) Measuring socioeconomic position in health research.
 924 *Br Med Bull*, 81-82, 21-37.
- 925 Guolo, A. & C. Varin (2017) Random-effects meta-analysis: the number of studies matters. *Stat*
 926 *Methods Med Res*, 26, 1500-1518.
- 927 Hartung, J. & G. Knapp (2001) On tests of the overall treatment effect in meta-analysis with normally
 928 distributed responses. *Stat Med*, 20, 1771-82.
- 929 Holle, R., M. Happich, H. Löwel, H. E. Wichmann & M. K. S. Group (2005) KORA--a research platform
 930 for population based health research. *Gesundheitswesen*, 67 Suppl 1, S19-25.
- 931 Houseman, E. A., W. P. Accomando, D. C. Koestler, B. C. Christensen, C. J. Marsit, H. H. Nelson, J. K.
 932 Wiencke & K. T. Kelsey (2012) DNA methylation arrays as surrogate measures of cell mixture
 933 distribution. *BMC Bioinformatics*, 13, 86.
- 934 Leek, J. T., W. E. Johnson, H. S. Parker, A. E. Jaffe & J. D. Storey (2012) The sva package for removing
 935 batch effects and other unwanted variation in high-throughput experiments. *Bioinformatics*,
 936 28, 882-3.
- 937 Lehne, B., A. W. Drong, M. Loh, W. Zhang, W. R. Scott, S. T. Tan, U. Afzal, J. Scott, M. R. Jarvelin, P.
 938 Elliott, M. I. McCarthy, J. S. Kooner & J. C. Chambers (2015) A coherent approach for analysis
 939 of the Illumina HumanMethylation450 BeadChip improves data quality and performance in
 940 epigenome-wide association studies. *Genome Biol*, 16, 37.
- 941 Liu, Y., J. Ding, L. M. Reynolds, K. Lohman, T. C. Register, A. De La Fuente, T. D. Howard, G. A.
 942 Hawkins, W. Cui, J. Morris, S. G. Smith, R. G. Barr, J. D. Kaufman, G. L. Burke, W. Post, S. Shea,
 943 C. E. McCall, D. Siscovick, D. R. Jacobs, R. P. Tracy, D. M. Herrington & I. Hoeschele (2013)
 944 Methyloomics of gene expression in human monocytes. *Hum Mol Genet*, 22, 5065-74.

945 Martinussen, T. & T. H. Sheike. 2006. *Dynamic regression models for survival data*. New York:
946 Springer.

947 McEwen, L. M., M. J. Jones, D. T. S. Lin, R. D. Edgar, L. T. Husquin, J. L. Maclsaac, K. E. Ramadori, A. M.
948 Morin, C. F. Rider, C. Carlsten, L. Quintana-Murci, S. Horvath & M. S. Kobor (2018) Systematic
949 evaluation of DNA methylation age estimation with common preprocessing methods and the
950 Infinium MethylationEPIC BeadChip array. *Clin Epigenetics*, 10, 123.

951 McKeague, I. W. & P. D. Sasieni (1994) A partly parametric additive risk model. *Biometrika*, 81, 501-
952 514.

953 Milne, R. L., A. S. Fletcher, R. J. MacInnis, A. M. Hodge, A. H. Hopkins, J. K. Bassett, F. J. Bruinsma, B.
954 M. Lynch, P. A. Dugué, H. Jayasekara, M. T. Brinkman, L. V. Popowski, L. Baglietto, G. Severi,
955 K. O'Dea, J. L. Hopper, M. C. Southey, D. R. English & G. G. Giles (2017) Cohort Profile: The
956 Melbourne Collaborative Cohort Study (Health 2020). *Int J Epidemiol*, 46, 1757-1757i.

957 Nguyen, Q. C., T. L. Osypuk, N. M. Schmidt, M. M. Glymour & E. J. Tchetgen Tchetgen (2015) Practical
958 guidance for conducting mediation analysis with multiple mediators using inverse odds ratio
959 weighting. *Am J Epidemiol*, 181, 349-56.

960 Palli, D., F. Berrino, P. Vineis, R. Tumino, S. Panico, G. Masala, C. Saieva, S. Salvini, M. Ceroti, V. Pala,
961 S. Sieri, G. Frasca, M. C. Giurdanella, C. Sacerdote, L. Fiorini, E. Celentano, R. Galasso, A.
962 Decarli, V. Krogh & EPIC-Italy (2003) A molecular epidemiology project on diet and cancer:
963 the EPIC-Italy Prospective Study. Design and baseline characteristics of participants. *Tumori*,
964 89, 586-93.

965 Pidsley, R., C. C. Y Wong, M. Volta, K. Lunnon, J. Mill & L. C. Schalkwyk (2013) A data-driven approach
966 to preprocessing Illumina 450K methylation array data. *BMC Genomics*, 14, 293.

967 Raum, E., D. Rothenbacher, M. Löw, C. Stegmaier, H. Ziegler & H. Brenner (2007) Changes of
968 cardiovascular risk factors and their implications in subsequent birth cohorts of older adults
969 in Germany: a life course approach. *Eur J Cardiovasc Prev Rehabil*, 14, 809-14.

970 Riboli, E. (2001) The European Prospective Investigation into Cancer and Nutrition (EPIC): plans and
971 progress. *J Nutr*, 131, 170S-175S.

972 Schwarzer, G., J. Carpenter & G. Rücker. 2015. *Meta-analysis with R*. Springer Publishing
973 International.

974 Severi, G., M. C. Southey, D. R. English, C. H. Jung, A. Lonie, C. McLean, H. Tsimiklis, J. L. Hopper, G. G.
975 Giles & L. Baglietto (2014) Epigenome-wide methylation in DNA from peripheral blood as a
976 marker of risk for breast cancer. *Breast Cancer Res Treat*, 148, 665-73.

977 Smyth, G. K. 2005. limma: Linear Models for Microarray Data. In *Bioinformatics and Computational
978 Biology Solutions Using R and Bioconductor*, eds. R. Gentleman, V. J. Carey, W. Huber, R. A.
979 Irizarry & S. Dudoit, 397-420. New York, NY: Springer New York.

980 Steen, J., T. Loeys, B. Moerkerke & S. Vansteelandt (2017) Flexible Mediation Analysis With Multiple
981 Mediators. *Am J Epidemiol*, 186, 184-193.

982 Stensrud, M. J. & M. A. Hernán (2020) Why Test for Proportional Hazards? *JAMA*, 323, 1401-1402.

983 Tchetgen, E. J. & I. Shpitser (2012) Semiparametric Theory for Causal Mediation Analysis: efficiency
984 bounds, multiple robustness, and sensitivity analysis. *Ann Stat*, 40, 1816-1845.

985 Tchetgen Tchetgen, E. J. (2013) Inverse odds ratio-weighted estimation for causal mediation analysis.
986 *Stat Med*, 32, 4567-80.

987 Teschendorff, A. E., F. Marabita, M. Lechner, T. Bartlett, J. Tegner, D. Gomez-Cabrero & S. Beck
988 (2013) A beta-mixture quantile normalization method for correcting probe design bias in
989 Illumina Infinium 450 k DNA methylation data. *Bioinformatics*, 29, 189-96.

990 Valeri, L., X. Lin & T. J. VanderWeele (2014) Mediation analysis when a continuous mediator is
991 measured with error and the outcome follows a generalized linear model. *Stat Med*, 33,
992 4875-90.

993 VanderWeele, T. J. 2015. *Explanation in Causal Inference: Methods for Mediation and Interaction*.
994 New York: Oxford University Press.

995 VanderWeele, T. J., L. Valeri & E. L. Ogburn (2012) The role of measurement error and
 996 misclassification in mediation analysis: mediation and measurement error. *Epidemiology*, 23,
 997 561-4.
 998 VanderWeele, T. J. & S. Vansteelandt (2014) Mediation Analysis with Multiple Mediators. *Epidemiol
 999 Methods*, 2, 95-115.
 1000 Whelan, B. J. & G. M. Savva (2013) Design and methodology of the Irish Longitudinal Study on
 1001 Ageing. *J Am Geriatr Soc*, 61 Suppl 2, S265-8.
 1002 Wiksten, A., G. Rücker & G. Schwarzer (2016) Hartung-Knapp method is not always conservative
 1003 compared with fixed-effect meta-analysis. *Stat Med*, 35, 2503-15.
 1004 Wilson, R., S. Wahl, L. Pfeiffer, C. K. Ward-Caviness, S. Kunze, A. Kretschmer, E. Reischl, A. Peters, C.
 1005 Gieger & M. Waldenberger (2017) The dynamics of smoking-related disturbed methylation: a
 1006 two time-point study of methylation change in smokers, non-smokers and former smokers.
 1007 *BMC Genomics*, 18, 805.
 1008 Wong Doo, N., E. Makalic, J. E. Joo, C. M. Vajdic, D. F. Schmidt, E. M. Wong, C. H. Jung, G. Severi, D. J.
 1009 Park, J. Chung, L. Baglietto, H. M. Prince, J. F. Seymour, C. Tam, J. L. Hopper, D. R. English, R.
 1010 L. Milne, S. J. Harrison, M. C. Southey & G. G. Giles (2016) Global measures of peripheral
 1011 blood-derived DNA methylation as a risk factor in the development of mature B-cell
 1012 neoplasms. *Epigenomics*, 8, 55-66.
 1013 Zeilinger, S., B. Kühnel, N. Klopp, H. Baurecht, A. Kleinschmidt, C. Gieger, S. Weidinger, E. Lattka, J.
 1014 Adamski, A. Peters, K. Strauch, M. Waldenberger & T. Illig (2013) Tobacco smoking leads to
 1015 extensive genome-wide changes in DNA methylation. *PLoS One*, 8, e63812.
 1016 Zhang, Y., B. Schöttker, I. Florath, C. Stock, K. Butterbach, B. Holleczeck, U. Mons & H. Brenner (2016)
 1017 Smoking-Associated DNA Methylation Biomarkers and Their Predictive Value for All-Cause
 1018 and Cardiovascular Mortality. *Environ Health Perspect*, 124, 67-74.
 1019 Zhang, Y., R. Wilson, J. Heiss, L. P. Breitling, K. U. Saum, B. Schöttker, B. Holleczeck, M. Waldenberger,
 1020 A. Peters & H. Brenner (2017) DNA methylation signatures in peripheral blood strongly
 1021 predict all-cause mortality. *Nat Commun*, 8, 14617.
 1022
 1023
 1024