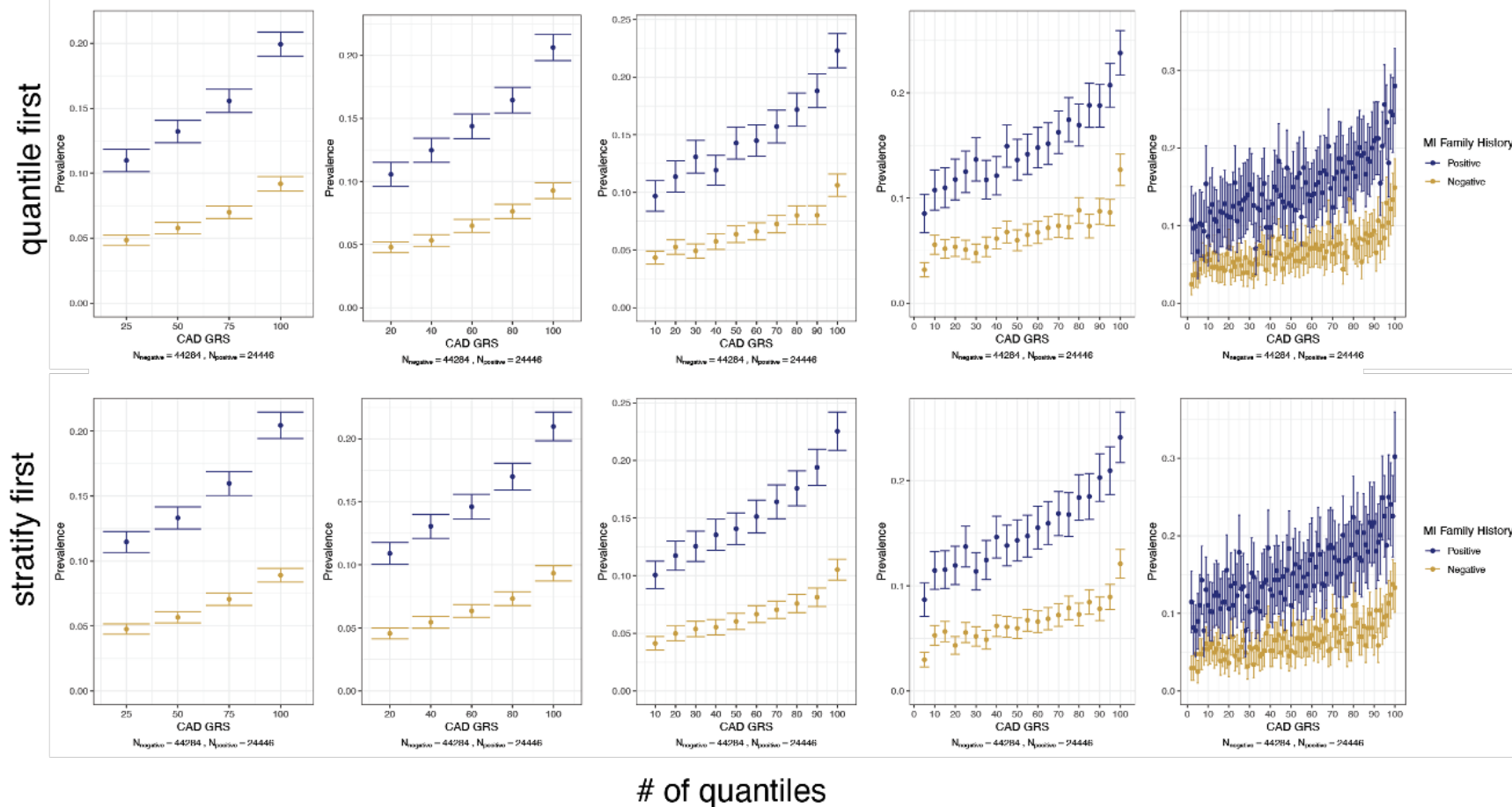


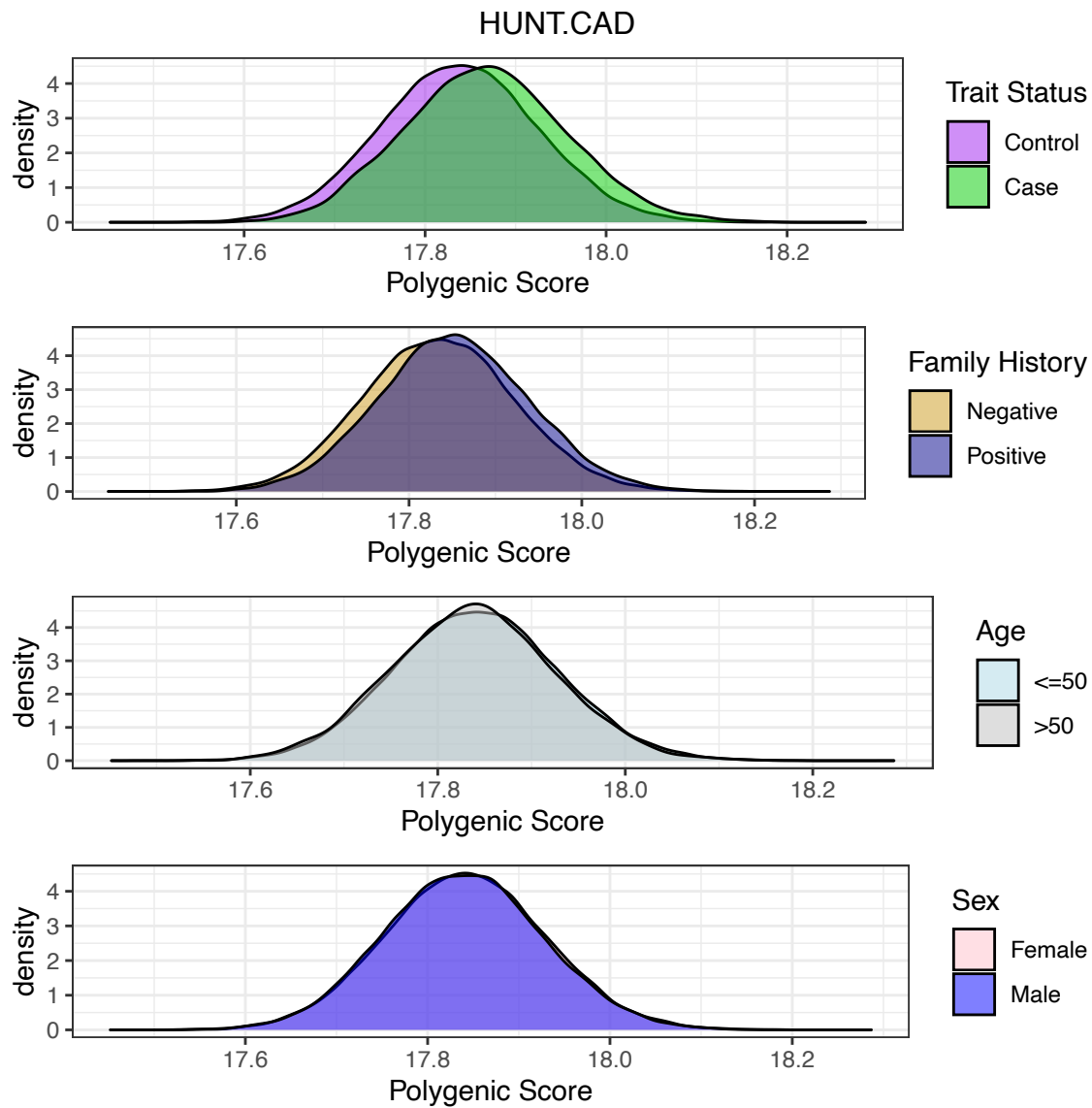
Supplementary Figures and Tables

CAD in HUNT sensitivity analysis



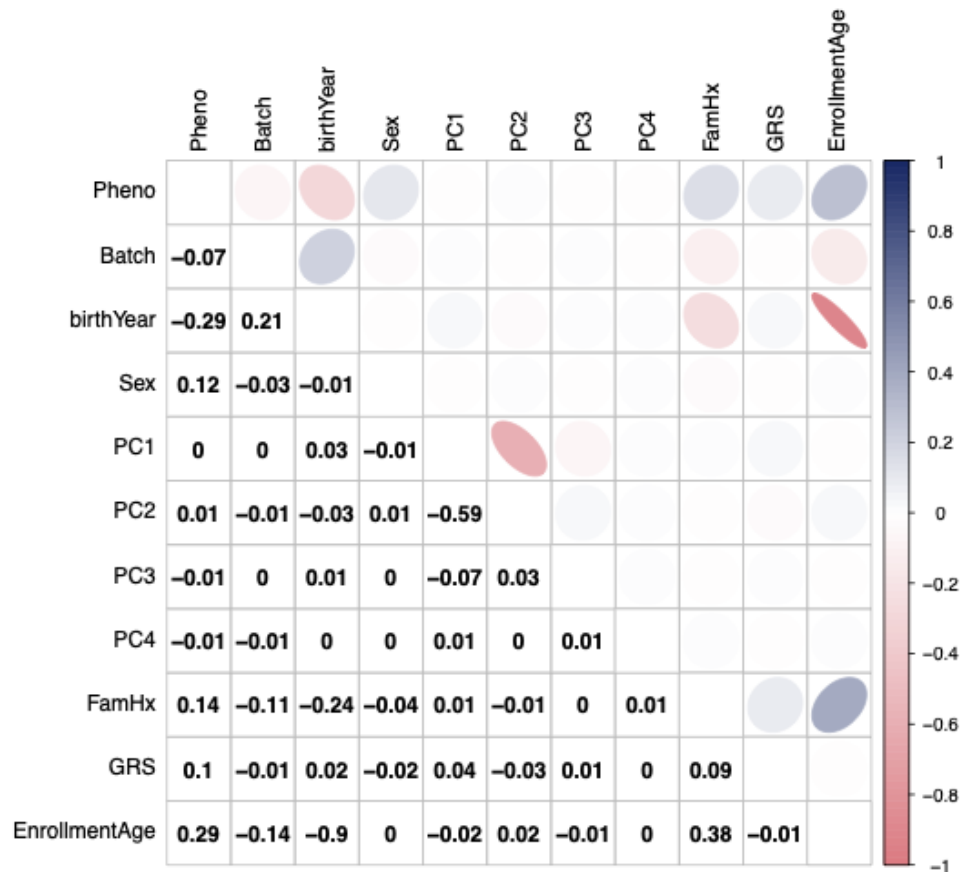
Supplementary Figure 1 Sensitivity analysis for disease prevalence

Regardless of the number of quantiles ($n=4,5,10,20,100$) or if quantiles are calculated before (quantile first) or after (stratify first) stratification by family history, the trends remain.

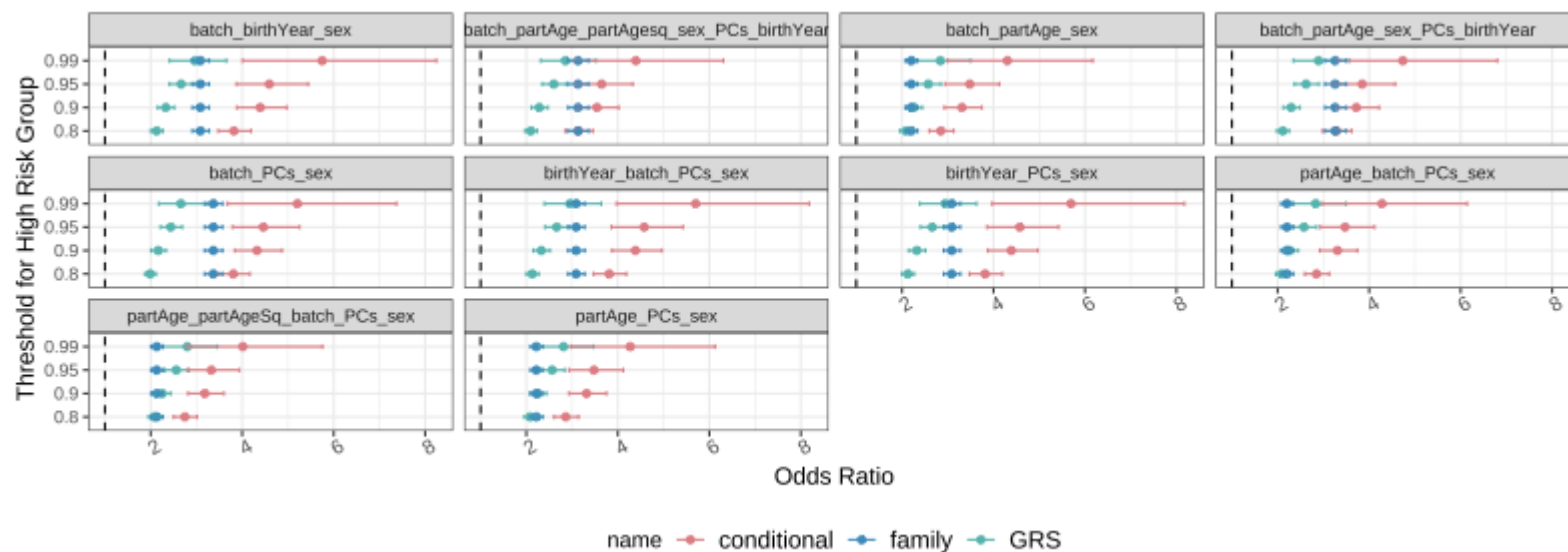


Supplementary Figure 2 Distribution of PGS for CAD in HUNT

Inverse normalized polygenic score stratified by trait status, family history, 50 years of age, and sex.

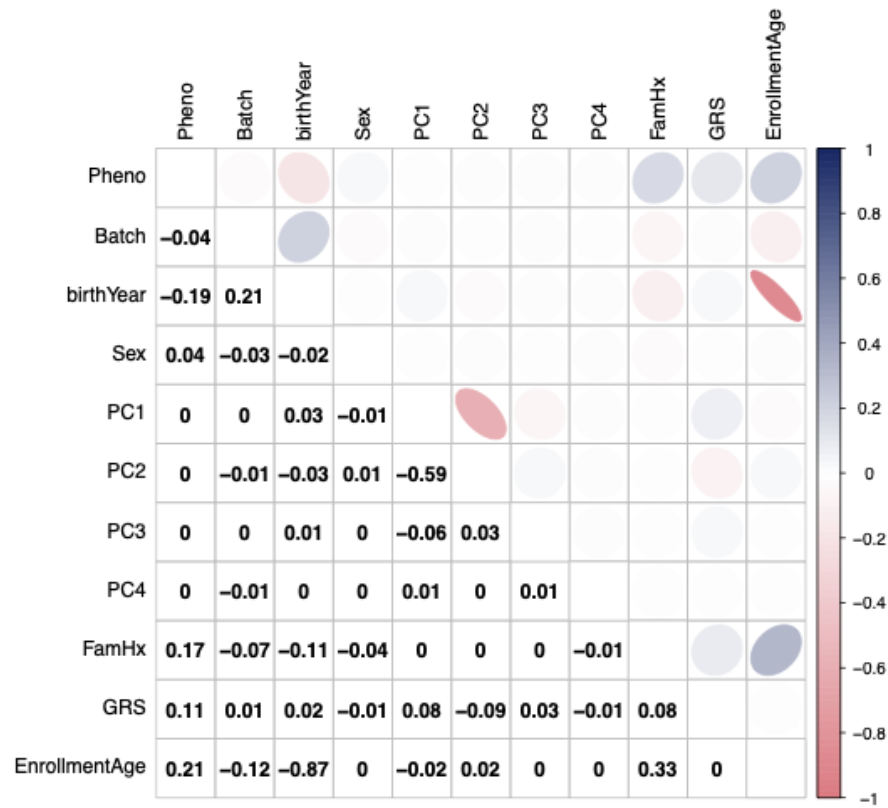


Supplementary Figure 3 Pearson correlations between model variables for CAD in HUNT. Pheno is the phenotype (e.g., CAD). Batch is genotyping batch coded 0,1. FamHx is family history coded 0,1. Sex is coded 0= females and 1= males. Enrollment age is the age at which a participant filled out the self-report family history variables in a HUNT survey.



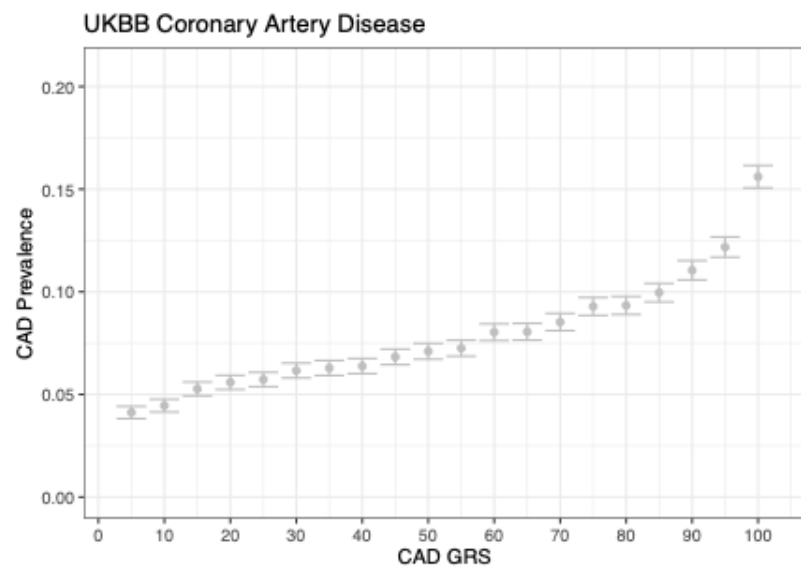
Supplementary Figure 4 Model selection for CAD

An indicator variable was used to identify a “high risk” group. Conditional is top X% of distribution with positive family history. Model selection was performed, leaving out one covariate at a time. Batch is genotyping batch, participation age is the age family history was self reported, partAgesq is participation age squared. All continuous variables were scaled to mean of 0 and variance of 1. PGS was inverse normalized. When birthyear and participation age are not included, family history has a higher odds ratio than when these covariates are adjusted for

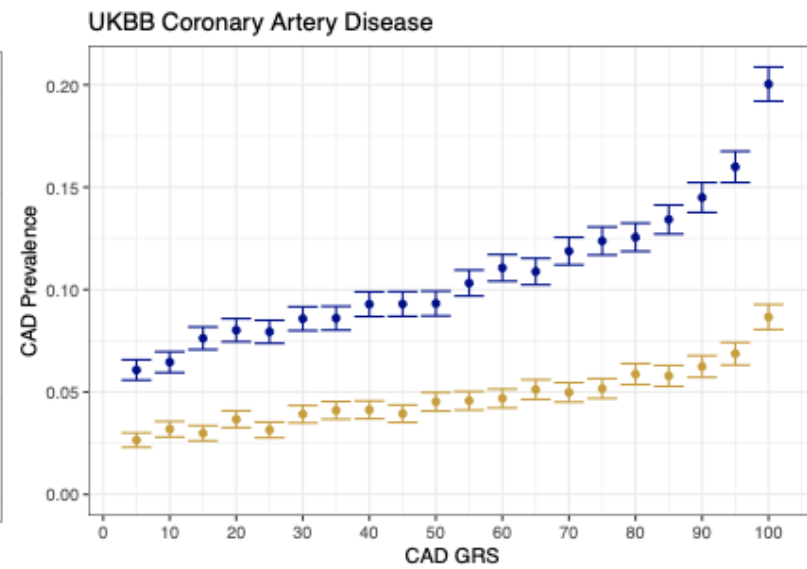


Supplementary Figure 5 Pearson correlations between model variables for T2D in HUNT.

Pheno is the phenotype (e.g., Type 2 diabetes). Batch is genotyping batch coded 0,1. FamHx is family history coded 0,1. Sex is coded 0= females and 1= males. Enrollment age is the age at which a participant filled out the self-report family history variables in a HUNT survey.



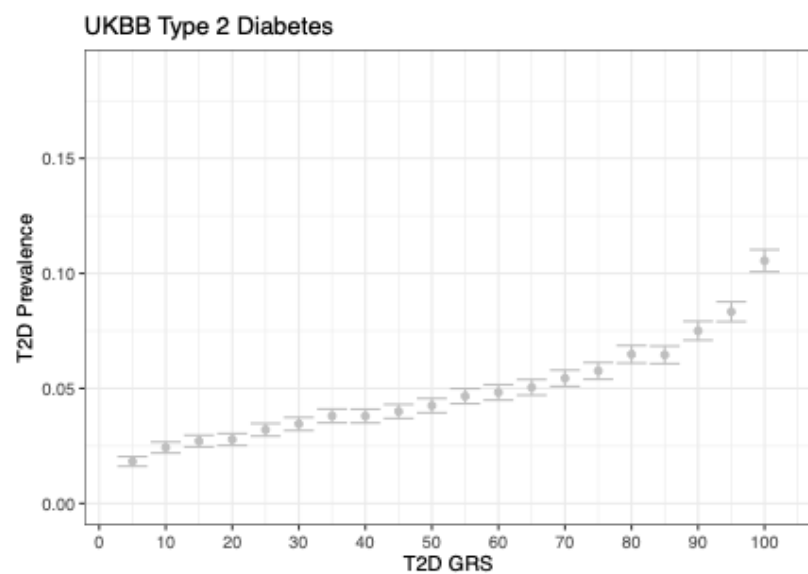
N = 408577



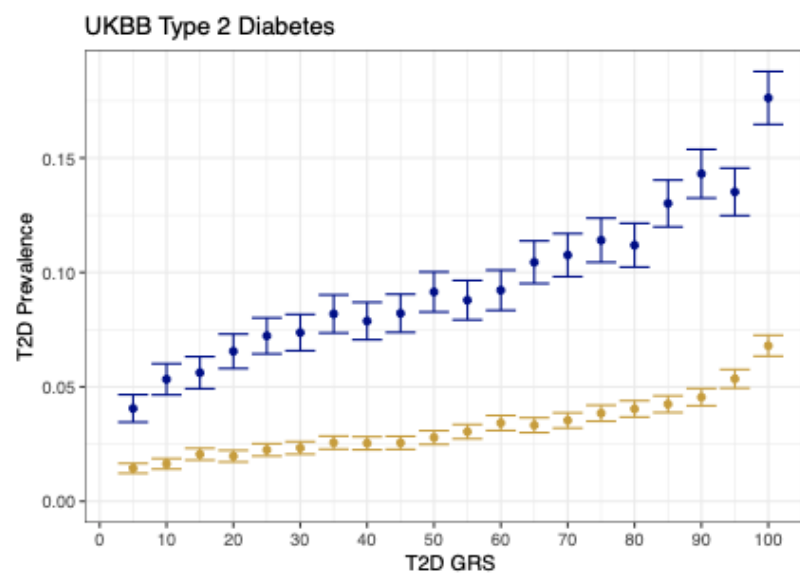
Heart Disease FamHx — Positive — Negative

$N_{\text{negative}} = 161364$, $N_{\text{positive}} = 178088$

Supplementary Figure 6 CAD prevalence in UK Biobank by PGS ventiles and family history strata



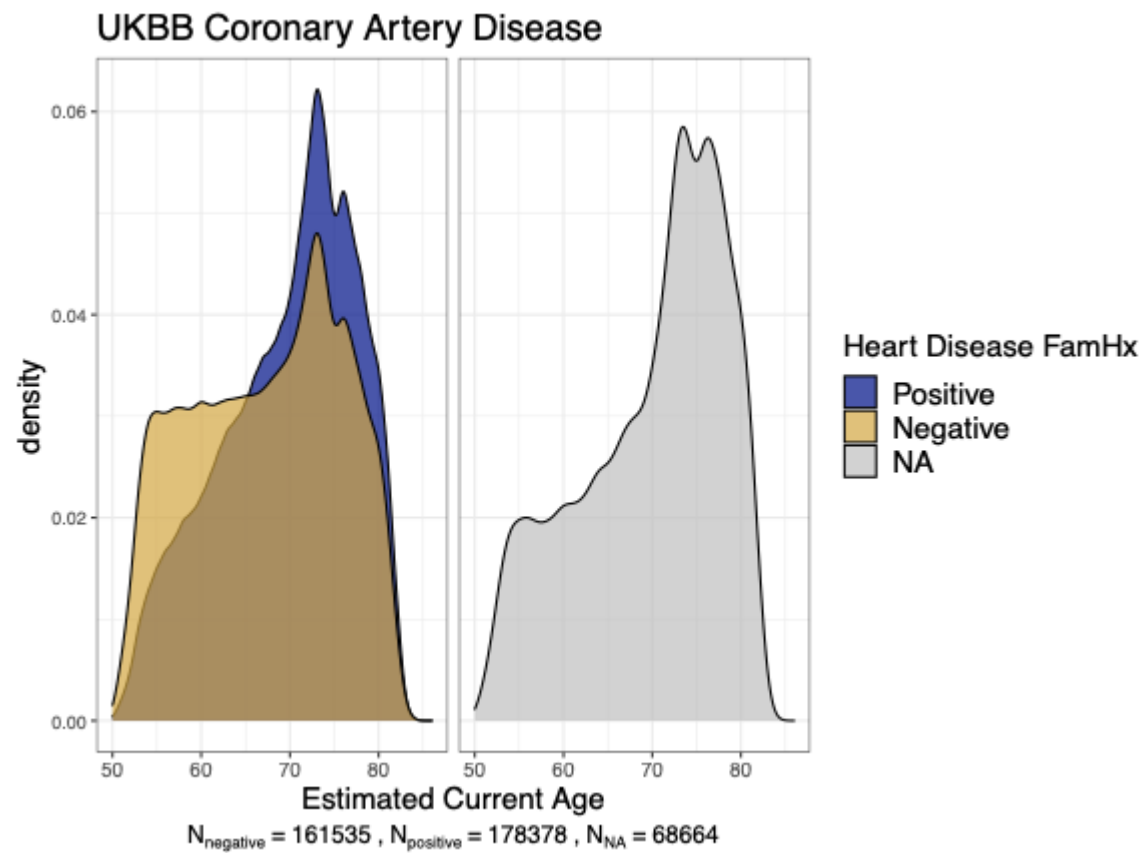
N = 408577



Diabetes FamHx Positive Negative

$N_{\text{negative}} = 233270$, $N_{\text{positive}} = 83287$

Supplementary Figure 7 T2D prevalence in UK Biobank by PGS ventiles and family history strata



Supplementary Figure 8 Age distribution in UK Biobank. With recent enrollment and only one time point, we are using current age to estimate the age of self-reported family history of heart disease in UK Biobank.

Supplementary Table 1 Clinical impact of high risk stratification for T2D in HUNT.

Predictor	High Risk definition	Reference Group	Odds Ratio	95% CI	p-value	% of sample in High Risk	Median participation age in High Risk	Prevalence in High Risk	Prevalence in Reference Group	Sensitivity	Specificity
PGS	Top 20%	Remaining 80%	2.09	1.97-2.24	4.15×10^{-113}	20	40.7	0.123	0.066	0.32	0.81
	Top 10%	Remaining 90%	2.82	2.11-2.47	7.83×10^{-93}	10	40.8	0.119	0.071	0.18	0.91
	Top 5%	Remaining 95%	2.35	2.35-2.88	3.02×10^{-75}	5	41.0	0.116	0.073	0.10	0.95
	Top 1%	Remaining 99%	2.85	2.31-3.52	1.67×10^{-22}	1	40.9	0.109	0.077	0.02	0.99
FH	Positive	Negative	3.12	2.91-3.36	2.44×10^{-212}	22.9	52.6	0.159	0.053	0.47	0.79
PGS conditional on Positive FH	Top 20% of Positive FH	Remaining 80%	3.14	2.85-3.46	6.21×10^{-119}	4.6	51.5	0.223	0.071	0.13	0.96
	Top 10% of Positive FH	Remaining 90%	3.54	3.13-4.02	6.90×10^{-87}	2.3	51.2	0.253	0.074	0.07	0.98
	Top 5% of Positive FH	Remaining 95%	3.65	3.07-4.32	6.83×10^{-50}	1.1	51.1	0.265	0.075	0.04	0.99
	Top 1% of Positive FH	Remaining 99%	4.39	3.06-6.31	1.07×10^{-15}	0.23	51.0	0.299	0.077	0.01	0.99

An indicator variable was created for the various high risk definitions above. The model controlled for batch, participation age, participation age squared, birth year, principal components 1-4 from genetic data, and sex.

Supplementary Table 2 Full model estimates for T2D in both cohorts.

	HUNT			UKB		
Predictor	OR	95% CI	p-value	OR	95% CI	p-value
Standardized Participation Age	2.22	1.76-2.74	2.61×10^{-13}	0.70	0.53-0.93	0.014
Standardized Participation Age Squared	0.46	0.39-0.56	2.54×10^{-16}	0.86	0.66-1.11	0.235
Standardized 2021-birthYear	2.22	2.06-2.40	1.80×10^{-97}	2.83	2.64-3.03	3.72×10^{-192}
Male Sex	1.41	1.33-1.50	2.18×10^{-30}	1.96	1.90-2.03	$< 2.2 \times 10^{-308}$
Positive Family History	3.01	2.79-3.24	5.58×10^{-181}	3.01	2.90-3.11	$< 2.2 \times 10^{-308}$
Inverse normalized PGS	1.60	1.54-1.67	9.65×10^{-115}	1.52	1.49-1.56	1.56×10^{-265}
Family History x Inverse normalized PGS	0.913	0.86-0.97	0.0032	0.99	0.95-1.02	0.42

Adjusted for principal components 1-4 from genetic data and genotyping batch (HUNT)/genotyping array (UKB).

Supplementary Table 3 Model comparisons for T2D in HUNT

Model 1	Model 2	LRT p-value	Nagelkerke's r^2
Base	PGS model	2.55×10^{-202}	0.031
Base	FH model	5.95×10^{-214}	0.033
PGS model	PGS + FH (additive) model	6.84×10^{-185}	0.028
FH model	PGS + FH (additive) model	2.94×10^{-173}	0.026
PGS + FH (additive) model	PGS + FH + PGS x FH (interaction) model	0.003	0.00029

Supplementary Table 4 Full model estimates for CAD in UKB

Predictor	OR	95% CI	p-value
Standardized Participation Age	1.35	1.054-1.74	0.0179
Standardized Participation Age Squared	0.54	0.43-0.67	3.6×10^{-8}
Standardized 2021-birthYear	3.02	2.87-3.19	$< 2.2 \times 10^{-308}$
Male Sex	2.87	2.79-2.95	$< 2.2 \times 10^{-308}$
Positive Family History	2.03	1.98-2.1	$< 2.2 \times 10^{-308}$
Inverse normalized PGS	1.41	1.38-1.44	1.29×10^{-169}
Family History x Inverse normalized PGS (interaction term)	1.03	1.01-1.07	0.0134

Adjusted for principal components 1-4 from genetic data and genotyping array.

Supplementary Table 5 Model comparisons for CAD and T2D in UKB

		CAD		T2D	
Model 1	Model 2	LRT p-value	Nagelkerke's r^2	LRT p-value	Nagelkerke's r^2
Base	PGSmodel	$< 2.2 \times 10^{-308}$	0.0234	$< 2.2 \times 10^{-308}$	0.296
Base	FH model	$< 2.2 \times 10^{-308}$	0.0207	$< 2.2 \times 10^{-308}$	0.046
PGS model	PGS + FH (additive) model	$< 2.2 \times 10^{-308}$	0.0168	$< 2.2 \times 10^{-308}$	0.0378
FH model	PGS + FH (additive) model	$< 2.2 \times 10^{-308}$	0.0195	$< 2.2 \times 10^{-308}$	0.0218
PGS + FH (additive) model	PGS + FH + PGS x FH (interaction) model	0.014	0.00004	0.416	6.2×10^{-6}

Supplementary Table 6. Cohort demographics

	HUNT Study (N=69,635)	UK Biobank (N=408,577)
Median participation age range for family history (IQR)	41.4 (30.4,54.9)	59 (51,64)
Median birth year (IQR)	1951 (1937,1964)	1950 (1945,1957)
Female (%)	53	54
T2D prevalence (%)	7.8	4.9
CAD prevalence (%)	9.7	7.8
MI prevalence (%)	9.0	NA

Supplementary Table 7 Phenotype definitions for main outcomes and family history variables in HUNT and UKB

	HUNT		UKB	
	CAD	T2D	CAD	T2D
Case definition	Self reported CABG or PCI or MI ICD code (I21,I25.2,410,412)	Non fasting serum glucose > 11.1, HbA1C > 6.5 or E11, 250.00, 250.02, 250.10, 250.12, 250.20, 250.2, 250.30, 250.32, 250.40, 250.42, 250.50, 250.52, 250.60, 250.62, 250.70, 250.72, 250.80, 250.82, 250.90, 250.9	Phecode 411 for ischemic heart disease	Phecode 250.2 for Type 2 diabetes
Self-reported family history	HUNT1: Sibling with heart attack or angina pectoris HUNT2: Parents or siblings had an MI or chest pain AND Mother, Father, Sister, Brother, Child had heart attack before age 60 HUNT3: Parents, siblings or children had heart attack before age 60	HUNT1: Siblings with diabetes HUNT2: Mother, father, brother, sister, child with diabetes HUNT3: Parents, siblings or children with diabetes	Heart disease of mother, father, or sibling	Diabetes of mother, father, or sibling

Supplementary Table 8 Sample sizes.

	Self-reported family history	Control	Case	Total
HUNT CAD	Negative	41,361	2,923	44,284
	Positive	20,705	3,741	24,446
	Unknown/NA	827	78	905
HUNT T2D	Negative	48,886	2,760	51,646
	Positive	12,926	2,445	15,371
	Unknown/NA	2,441	177	2,618
UKBB CAD	Positive	159,012	19,076	178,088
	Negative	153,762	7,602	161,364
	NA	63,143	5,387	68,530
UKBB T2D	Negative	225,772	7,498	233,270
	Positive	57,380	7,907	65,287
	Unknown/NA	87,217	4,790	92,007

The number of cases and controls and self-reported positive/negative family history participants in UKB and HUNT for both CAD and T2D.