

Supplementary material

Recovery from Covid-19 critical illness: a secondary analysis of the ISARIC4C CCP-UK cohort study and the RECOVER trial

Ellen Pauley, Thomas M Drake, David M Griffith, Nazir I Lone, Ewen M Harrison, J Kenneth Baillie, Janet T Scott, Timothy S Walsh, Malcolm G Semple, Annemarie B Docherty on behalf of the ISARIC4C and RECOVER Investigators

Author Affiliations

Ellen Pauley, BMedSci, Medical Student,¹ <https://orcid.org/0000-0001-6994-9722>

Thomas M Drake, MBChB BMedSci, Clinical Research Fellow,² <https://orcid.org/0000-0002-9334-6494>

David M Griffith, MBChB, MD Reader and honorary consultant in critical care.³

<https://orcid.org/0000-0001-9500-241X>

Nazir Lone, MBChB MSc PhD, Senior Clinical Lecturer and honorary consultant in Critical Care,^{3,4} <https://orcid.org/0000-0003-2707-2779>

Ewen M Harrison, MBChB MSc PhD, Professor of surgery and data science,² UK. <https://orcid.org/0000-0002-5018-3066>

J Kenneth Baillie, MBChB PhD, Senior Clinical Lecturer and honorary consultant in critical care^{3,5} <https://orcid.org/0000-0001-5258-793>

Janet T Scott, MBChB PhD, Clinical Lecturer in Infectious Disease,⁶ <https://orcid.org/0000-0001-8030-5223>

Timothy S Walsh, MBChB, MD Professor of Anaesthesia, Critical Care & Pain Medicine,³

<https://orcid.org/0000-0002-3590-8540>

Malcolm G Semple MBChB PhD, Professor of professor of outbreak medicine and child health and consultant physician in paediatric respiratory medicine, <https://orcid.org/0000-0001-9700-0418>

Annemarie B Docherty, MBChB MPH PhD, senior clinical lecturer and honorary consultant in critical care ^{2,3}<https://orcid.org/0000-0001-8277-420X>

1. University of Edinburgh Medical School, Edinburgh, UK.
2. Centre for Medical Informatics, The Usher Institute, University of Edinburgh, Edinburgh, UK.
3. Anaesthesia, Critical Care & Pain Medicine, University of Edinburgh, Edinburgh, UK.
4. Centre for Population Health Sciences, The Usher Institute, University of Edinburgh, Edinburgh, UK.
5. Roslin Institute, University of Edinburgh, Edinburgh, UK
6. MRC-University of Glasgow Centre for Virus Research, Glasgow, UK.
7. NIHR Health Protection Unit in Emerging Infectious Diseases, Institute of Infection, Veterinary and Ecological Sciences, Faculty of Health and Life Sciences, University of Liverpool, Liverpool, UK

Supplementary table-1: Severe fatigue in Covid-19 (n=85) and pre-pandemic (At 3-months: n=188, at 6-months: n=166, at 12-months, n=159) IMV-patients.

Numbers are presented as N (%), unless otherwise denoted as a continuous variable. Patients missing did not respond, or for the pre-pandemic cohort did not respond or did not survive to follow-up. The Covid-19 cohort was stratified according to approximate time since hospital discharge at which they responded: ~3 months was defined as 90-120 days, ~6 months was defined as 150-210 days.

			Covid-19 cohort	Pre-pandemic cohort	p-value
Fatigue >=7/10 on VAS	~3 months	Yes	7 (38.9)	51 (27.1)	0.285
		No	11 (61.1)	137 (72.9)	
	~6 months	Yes	3 (10.3)	54 (32.5)	0.015
		No	26 (89.7)	112 (67.5)	
	~12 months	Yes	-	51 (32.1)	-
		No	-	108 (67.9)	
Across follow-up period		Yes	24 (28.2)	-	-
		No	61 (71.8)	-	

Supplementary Table-2: Breathlessness and quality of life in Covid-19 (n=85) and pre-pandemic IMV-patients (n=197).

IQR – Interquartile range, presented as 25th to 75th centiles. Numbers are presented as N (%), unless otherwise denoted as a continuous variable. Patients missing did not respond, or for the pre-pandemic cohort did not respond or did not survive to follow-up.

		Covid-19 cohort	Pre-pandemic cohort	N
MRC Dyspnoea Grade	Median (IQR)	2.0 (1.0 to 3.0)	-	85
Overall health state (ED5D-5L)	Median (IQR)	0.8 (0.7 to 0.9)	-	85
Breathlessness at 3 months	Median (IQR)	-	2.9 (1.1 to 5.0)	189
Breathlessness at 6 months	Median (IQR)	-	3.6 (1.2 to 6.0)	167
Breathlessness at 12 months	Median (IQR)	-	3.3 (1.1 to 6.1)	159
MCS (SF-12) at 3 months	Median (IQR)	-	45.6 (33.3 to 54.7)	197
MCS (SF-12) at 6 months	Median (IQR)	-	42.5 (34.3 to 54.2)	165
MCS (SF-12) at 12 months	Median (IQR)	-	44.5 (35.1 to 54.3)	155
PCS (SF-12) at 3 months	Median (IQR)	-	34.6 (26.7 to 42.9)	197
PCS (SF-12) at 6 months	Median (IQR)	-	35.9 (25.9 to 45.3)	165
PCS (SF-12) at 12 months	Median (IQR)	-	36.6 (27.5 to 46.2)	155

Supplementary Table-3: Combined model tables: pre-pandemic IMV-patients.

A. 3-months

For breathlessness - Number in model = 189. Log-likelihood = -430.7, AIC = 875.4, R-squared = 0.14, Adjusted R-squared = 0.11. For Fatigue - Number in model = 188, Log-likelihood = -438.43, AIC = 890.9, R-squared = 0.088, Adjusted R-squared = 0.063. For MCS - Number in model = 197, Log-likelihood = -773.64, AIC = 1561.3, R-squared = 0.14, Adjusted R-squared = 0.12. For PCS - Number in model = 197, Log-likelihood = -751.76, AIC = 1517.5, R-squared = 0.037, Adjusted R-squared = 0.012

Dependent: Mean breathlessness	N=188	Fatigue: Coefficient (multivariable)	Breathlessness Coefficient (multivariable)	MCS Score SF12: Coefficient (multivariable)	PCS Score SF12: Coefficient (multivariable)
Sex	Male	-	-	-	-
	Female	-0.12 (-0.88 to 0.63, p=0.747)	-0.60 (-1.32 to 0.11, p=0.097)	-0.53 (-4.15 to 3.09, p=0.774)	1.95 (-1.29 to 5.19, p=0.236)
Age	Under 50	-	-	-	-
	50 to 69	-1.30 9-2.29 to -0.30, p=0.011)	-0.82 (-1.77 to 0.12, p=0.087)	7.84 (3.17 to 12.51, p=0.001)	-0.98 (-5.75 to 3.79, p=0.868)
	Over 70	-1.74 (-2.86 to -0.61, p=0.003)	1.33 (-2.39 to -0.27, p=0.015)	14.36 (9.03 to 19.69, p<0.001)	-0.98 (-5.75 to 3.79, p=0.868)
Comorbidities	No comorbidities	-	-	-	-
	One or more comorbidities	1.74 (0.63 to 2.85, p=0.002)	2.43 (1.38 to 3.49, p<0.001)	-5.91 (-11.25 to -0.57, p=0.030)	-5.10 (-9.88 to -0.31, p=0.037)
Duration of IMV (days)	Range: 2.0, 61.0	-0.00 (-0.04 to 0.04, p=0.998)	0.04 (0.00 to 0.08, p=0.028)	0.10 (-0.07 to 0.28, p=0.257)	-0.05 (-0.21 to 0.11, p=0.530)

B. 12-months

For Breathlessness - Number in model = 159, Log-likelihood = -390.24, AIC = 794.5, R-squared = 0.051, Adjusted R-squared = 0.021 For fatigue - Number in model = 159, Log-likelihood = -380.63, AIC = 775.3, R-squared = 0.033, Adjusted R-squared = 0.0013 For MCS - Number in model = 155, Log-likelihood = -591.98, AIC = 1198, R-squared = 0.13, Adjusted R-squared = 0.098 For PCS - Number in model = 155, Log-likelihood = -606.67, AIC = 1227.3, R-squared = 0.056, Adjusted R-squared = 0.025

Dependent: Mean breathlessness	N=159	Fatigue Coefficient (multivariable)	Breathlessness: Coefficient (multivariable)	MCS Score SF12: Coefficient (multivariable)	PCS Score SF12: Coefficient (multivariable)
Sex	Male	-	-	-	-
	Female	0.04 (-0.83 to 0.91, p=0.920)	0.08 (-0.80 to 0.97, p=0.853)	-0.96 (-4.62 to 2.69, p=0.604)	0.06 (-3.95 to 4.08, p=0.975)
Age	Under 50	-	-	-	-
	50 to 69	0.47 (-0.86 to 1.80, p=0.489)	1.11 (-0.23 to 2.46, p=0.103)	5.80 (0.24 to 11.37, p=0.041)	-4.23 (-10.35 to 1.89, p=0.174)
	Over 70	0.01 (-1.43 to 1.46, p=0.984)	0.41 (-1.05 to 1.88, p=0.578)	12.17 (6.14 to 18.20, p<0.001)	-3.33 (-9.95 to 3.30, p=0.323)
Comorbidities	No comorbidities	-	-	-	-
	One or more comorbidities	1.26 (-0.07 to 2.60, p=0.064)	1.05 (-0.33 to 2.43, p=0.134)	-7.73 (-13.56 to -1.90, p=0.010)	-8.05 (-14.47 to -1.64, p=0.014)

Dependent: Mean breathlessness	N=159	Fatigue Coefficient (multivariable)	Breathlessness: Coefficient (multivariable)	MCS Score SF12: Coefficient (multivariable)	PCS Score SF12: Coefficient (multivariable)
Duration of IMV (days)	Range: 2.0, 61.0	-0.02 (-0.06 to 0.02, p=0.397)	-0.03 (-0.07 to 0.01, p=0.142)	0.04 (-0.13 to 0.21, p=0.611)	0.02 (-0.16 to 0.21, p=0.796)

Supplementary Table-4: Multilevel logistic regression model including all patients (Covid-19 and pre-pandemic group) for self-reported severe fatigue at follow-up (cut-off >7/10).

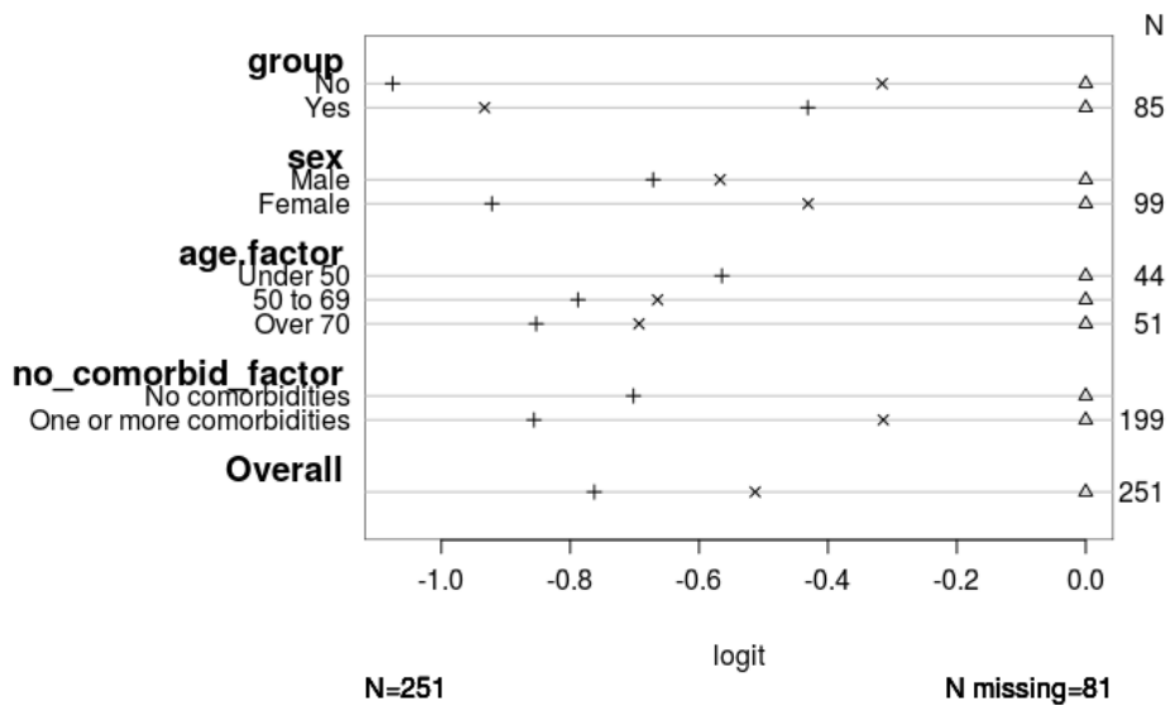
Number in model = 251, AIC = 262.4, C-statistic = 0.676, H&L = Chi-sq(8) 2.26 (p=0.972) Pre-pandemic patients included at 6-months follow-up.

Dependent: Fatigue		N=251	Fatigue score <=7	Fatigue score >7	OR (univariable)	OR (multivariable)
VAS Score						
Sex	Male		119 (78.3)	32 (21.7)	-	-
	Female		74 (74.7)	25 (25.3)	1.22 (0.67-2.20, p=0.516)	0.99 (0.52-1.84, p=0.963)
Covid-19	No		118 (71.1)	48 (28.9)	-	-
	Yes		75 (88.2)	10 (11.8)	0.33 (0.15-0.66, p=0.003)	0.35 (0.15-0.76, p=0.010)
Any comorbidities	No comorbidities		47 (90.4)	5 (9.6)	-	-
	One or more comorbidities		146 (73.4)	53 (26.5)	3.41 (1.40-10.23, p=0.014)	2.91 (1.13-9.05, p=0.040)
Age	Under 50		28 (63.3)	16 (36.4)	-	-
	50 to 69		126 (80.8)	30 (19.2)	0.42 (0.20-0.88, p=0.019)	0.39 (0.18-0.84, p=0.016)
	Over 70		39 (76.5)	12 (23.5)	0.54 (0.22-1.31, p=0.174)	0.34 (0.13-0.86, p=0.025)

Supplementary Table-5: Ordinal logistic regression model

Residual Deviance: 743.2782; AIC: 761.2782; Number in model = 251

	Value	Standard error	T value	P value	OR	95% CI
Covid-19: Yes	-0.69	0.27	-2.59	0.477	0.50	0.29-0.84
Sex: Female	-0.01	0.24	-0.02	1.000	0.99	0.62-1.59
Any comorbidities: One or more	1.15	0.31	3.78	0.029	3.17	1.75-5.81
Age: 50-69	-0.58	0.33	-1.78	1.000	0.56	0.29-1.06
Age: Over 70	-0.94	0.39	-2.40	0.222	0.39	0.18-0.84
Fatigue level						
0-2 2-4	-1.20	0.42	-2.87			
2-4 4-6	-0.36	0.42	-0.86			
4-6 6-8	0.68	0.42	1.64			
6-8 8-10	2.61	0.45	5.86			



Group – Covid-19 status. Age.factor – age. No_comorbid_factor – Presence of comorbidity.

Supplementary Table-6: Outcomes stratified by age and sex. 6A: Covid-19 cohort. 6B: Pre-pandemic cohort at 3-months post-hospital discharge. 6C: Pre-pandemic cohort at 6-months post-hospital discharge. 6D: Pre-pandemic cohort at 12-months post-hospital discharge.
6A (n=85)

Age	Sex	Fatigue	Lower limit	Upper limit
Under 50	Male	2.58	0.97	4.19
Under 50	Female	5.20	2.93	7.47
50 to 69	Male	4.40	3.56	5.24
50 to 69	Female	4.40	3.22	5.58
Over 70	Male	4.20	1.69	6.71
MRC Grade				
Under 50	Male	1.67	1.11	2.22
Under 50	Female	2.57	2.18	2.97
50 to 69	Male	2.43	2.05	2.82
50 to 69	Female	2.70	2.25	3.15
Over 70	Male	2.60	1.42	3.78
Overall Health State				
Under 50	Male	0.86	0.79	0.92
Under 50	Female	0.66	0.49	0.82
50 to 69	Male	0.76	0.68	0.83
50 to 69	Female	0.72	0.59	0.84
Over 70	Male	0.77	0.70	0.84

6B

Fatigue – N=188. Breathlessness = N=189. MCS – Mental Component Score N=197. PCS – Physical Component Score N=197.

Age	Sex	Fatigue	Lower limit	Upper limit
Under 50	Male	5.82	4.66	6.99
Under 50	Female	6.08	5.12	7.04
50 to 69	Male	4.78	4.16	5.40
50 to 69	Female	4.59	3.59	5.60
Over 70	Male	4.42	3.41	5.42
Over 70	Female	4.48	3.62	5.34
Breathlessness				
Under 50	Male	4.02	2.62	5.42
Under 50	Female	3.80	2.31	5.29
50 to 69	Male	3.40	2.77	4.02
50 to 69	Female	2.99	2.25	3.73
Over 70	Male	3.25	2.25	4.26
Over 70	Female	2.60	1.87	3.32
PCS				
Under 50	Male	36.72	32.23	41.20
Under 50	Female	37.05	31.86	42.23
50 to 69	Male	33.42	30.63	36.21
50 to 69	Female	36.01	32.71	39.30
Over 70	Male	34.84	29.84	39.84
Over 70	Female	35.86	32.06	39.66
MCS				
Under 50	Male	36.71	30.82	42.59
Under 50	Female	36.52	30.14	42.90

50 to 69	Male	44.75	42.14	47.36
50 to 69	Female	44.00	39.33	48.68
Over 70	Male	50.66	45.97	55.35
Over 70	Female	49.80	44.83	54.77

6C

Fatigue – N=166. Breathlessness = N=167. MCS – Mental Component Score N=165. PCS – Physical Component Score N=165.

Age	Sex	Fatigue	Lower limit	Upper Limit
Under 50	Male	6.14	4.55	7.73
Under 50	Female	6.90	5.88	7.92
50 to 69	Male	5.36	4.70	6.01
50 to 69	Female	4.82	3.94	5.70
Over 70	Male	4.93	3.70	6.16
Over 70	Female	4.83	3.69	5.96

Breathlessness

Under 50	Male	4.33	2.73	5.92
Under 50	Female	3.65	2.14	5.17
50 to 69	Male	3.69	2.97	4.42
50 to 69	Female	3.63	2.75	4.50
Over 70	Male	3.91	2.92	4.91
Over 70	Female	3.22	2.19	4.26

PCS

Under 50	Male	36.45	30.19	42.71
Under 50	Female	39.17	33.77	44.56
50 to 69	Male	34.61	31.40	37.82
50 to 69	Female	36.41	32.69	40.14

Over 70	Male	36.12	31.01	41.22
Over 70	Female	36.69	32.57	40.81
MCS				
Under 50	Male	31.75	24.82	38.69
Under 50	Female	33.29	27.35	39.23
50 to 69	Male	43.83	40.66	47.01
50 to 69	Female	42.80	38.38	47.22
Over 70	Male	48.62	44.25	53.00
Over 70	Female	45.87	40.89	50.86

6D

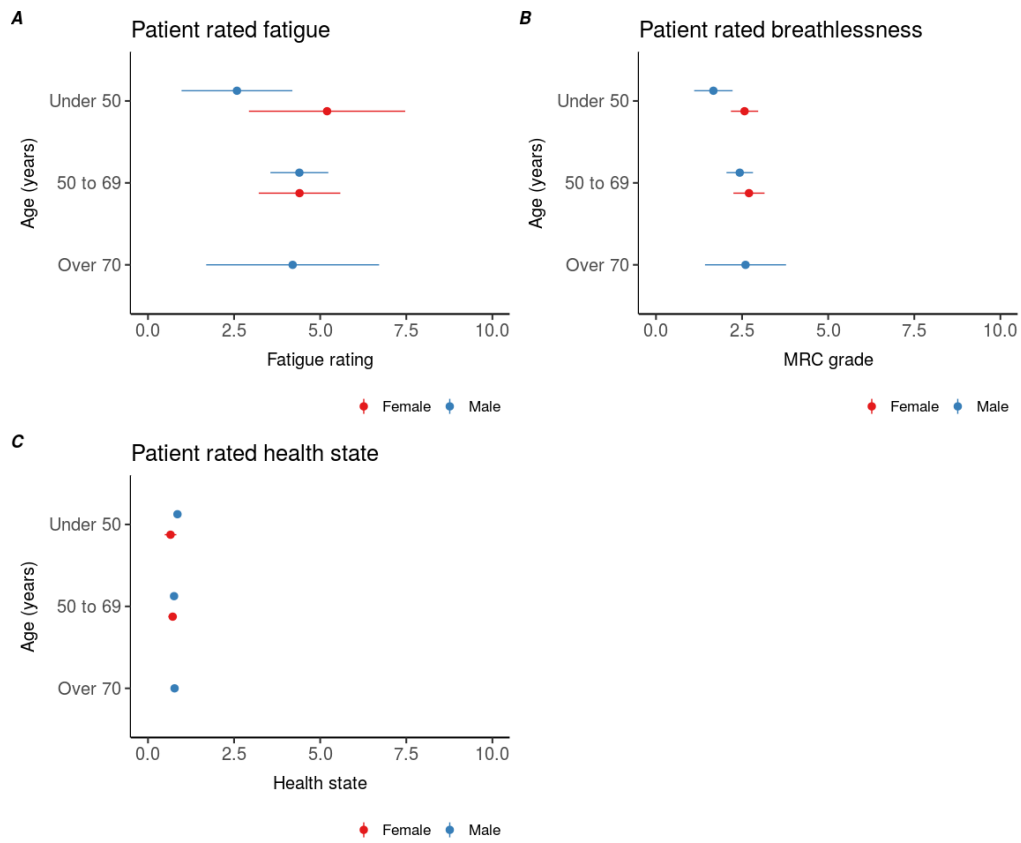
Fatigue – N=159. Breathlessness = N=159. MCS – Mental Component Score N=155. PCS – Physical Component Score N=155.

Age	Sex	Fatigue	Lower limit	Upper limit
Under 50	Male	5.04	2.66	7.43
Under 50	Female	4.53	3.24	5.82
50 to 69	Male	5.29	4.58	6.00
50 to 69	Female	5.36	4.51	6.20
Over 70	Male	4.89	3.74	6.04
Over 70	Female	5.13	4.04	6.23
Breathlessness				
Under 50	Male	3.52	1.33	5.72
Under 50	Female	2.37	0.89	3.85
50 to 69	Male	3.85	3.07	4.62
50 to 69	Female	4.42	3.57	5.27
Over 70	Male	3.68	2.61	4.74
Over 70	Female	3.33	2.26	4.40

MCS				
Under 50	Male	36.65	26.01	47.28
Under 50	Female	39.53	33.16	45.91
50 to 69	Male	44.56	41.52	47.59
50 to 69	Female	42.02	37.66	46.38
Over 70	Male	48.81	44.95	52.66
Over 70	Female	49.07	45.34	52.81
PCS				
Under 50	Male	37.40	29.77	45.02
Under 50	Female	45.19	36.70	53.68
50 to 69	Male	37.73	34.27	41.19
50 to 69	Female	35.44	31.52	39.36
Over 70	Male	36.37	30.49	42.26
Over 70	Female	37.29	33.16	41.43

Supplementary Figure-1: Outcomes stratified by age and sex. Red: female. Blue: male.

1A: Covid-19 cohort (n=85) median response (185 days, IQR: 136.8 to 241.2). A- Fatigue severity, B – Breathlessness, C – Overall health state.



1B-A: Pre-pandemic patients at 3-months post-hospital discharge (n=188). A- Fatigue severity, B – breathlessness, C – Mental Composite Score, D – Physical Composite Score.

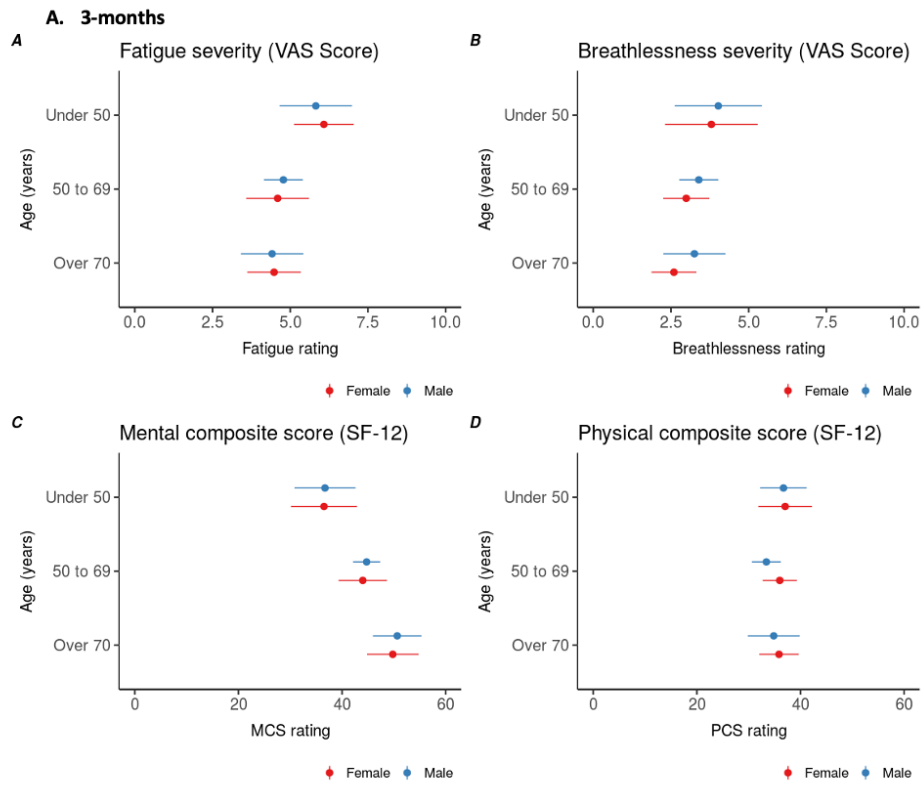


Figure 1B-B: Pre-pandemic patients at 6-months post-hospital discharge (n=166). A- Fatigue severity, B – breathlessness, C – Mental Composite Score, D – Physical Composite Score.

B. 6-months

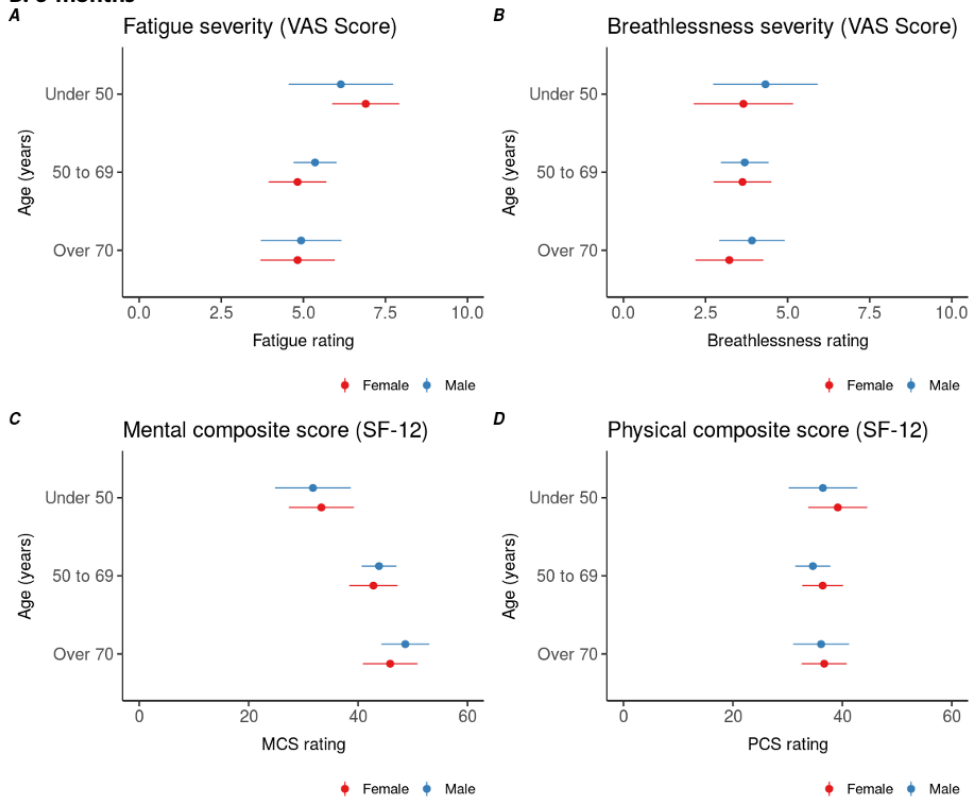


Figure 1B-C: Pre-pandemic patients at 12-months post-hospital discharge (n=159). A- Fatigue severity, B – breathlessness, C – Mental Composite Score, D – Physical Composite Score.

12-months

