

Supplementary material for:

**Widespread Contamination of SARS-CoV-2 on Highly Touched Surfaces in
in Brazil During the Second Wave of the COVID-19 Pandemic**

Severino Jefferson Ribeiro da Silva¹, Jéssica Catarine Frutuoso do Nascimento¹, Wendell Palôma Maria dos Santos Reis¹, Caroline Targino Alves da Silva¹, Poliana Gomes da Silva¹, Renata Pessôa Germano Mendes¹, Allyson Andrade Mendonça¹, Bárbara Nazly Rodrigues Santos¹, Jurandy Júnior Ferraz de Magalhães^{1,2,3}, Alain Kohl⁴ and Lindomar Pena^{1*}

¹Department of Virology, Aggeu Magalhães Institute (IAM), Oswaldo Cruz Foundation (Fiocruz), 50670-420, Recife, Pernambuco, Brazil;

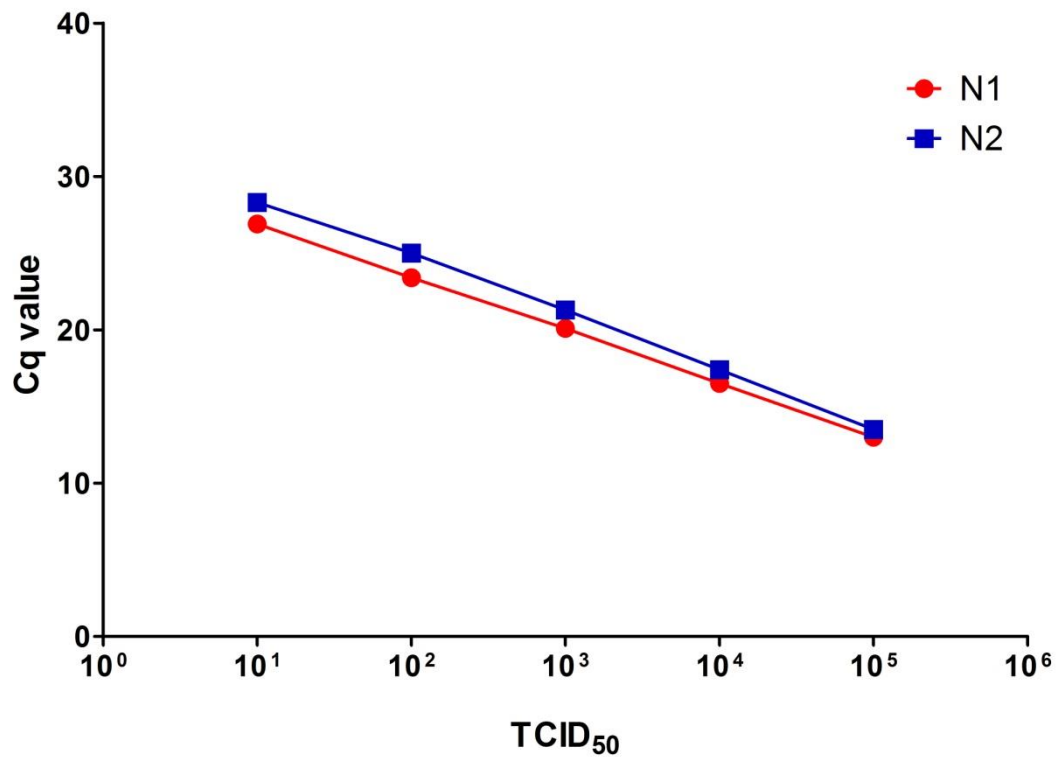
²Department of Virology, Pernambuco State Central Laboratory (LACEN/PE), Recife, Pernambuco, Brazil;

³University of Pernambuco (UPE), Serra Talhada Campus, Serra Talhada, Pernambuco, Brazil;

⁴MRC-University of Glasgow, Centre for Virus Research, Glasgow, G61 1QH, UK;

*Corresponding author: lindomar.pena@fiocuz.br

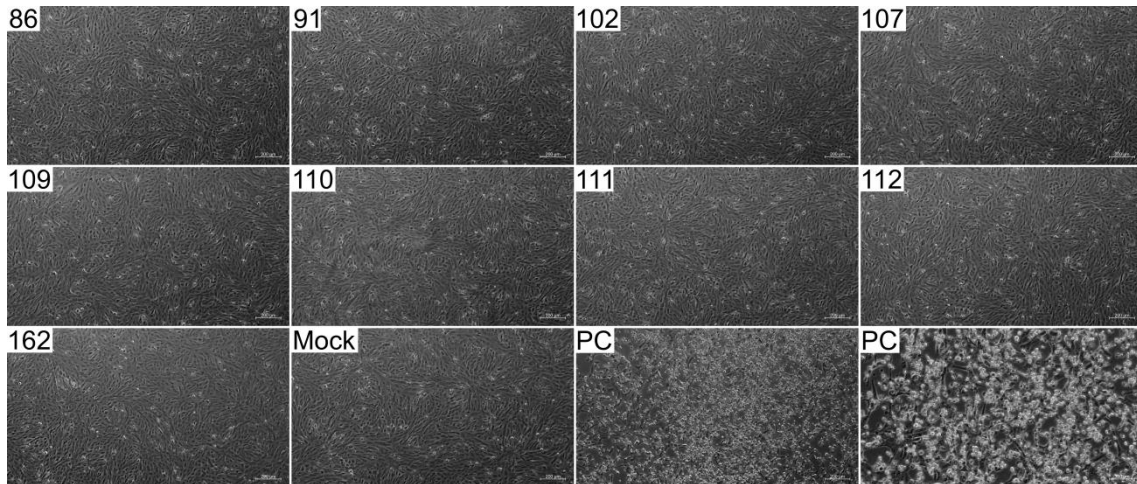
Figure S1. Standard curve using N1 and N2 primers to detect SARS-CoV-2 RNA extracted from cell supernatants.



TCID₅₀: 50% Tissue Culture Infectious Dose

Cq: Cycle quantification

Figure S2. Attempted to SARS-CoV-2 isolation using the Vero CCL-81 cell lineage.



Cytopathic effect observed in positive surface samples. Specimens with a lower C_q value (86, 91, 102, 107, 109, 110, 111, 112 and 162) among samples tested positive for SARS-CoV-2 after three passages. Mock: uninfected cells; PC: positive control (SARS-CoV-2 isolated from patient sample).

Table S1. Primers used in this study for SARS-CoV-2 detection.

Target	Primer name	Oligonucleotide Sequence (5'-3')^a	Assay
N	2019-nCoV_N1-F	GACCCCAAATCAGCGAAAT	RT-qPCR
	2019-nCoV_N1-R	TCTGGTTACTGCCAGTTGAATCTG	RT-qPCR
	2019-nCoV_N1-P	FAM-ACCCCGCATTACGTTTGGTGGACC-BHQ1	RT-qPCR
	2019-nCoV_N2-F	TTACAAACATTGGCCGCAA	RT-qPCR
	2019-nCoV_N2-R	GCGCGACATTCCGAAGAA	RT-qPCR
	2019-nCoV_N2-P	FAM-ACAATTTGCCCCAGCGCTTCAG-BHQ1	RT-qPCR

^a Primers were designed by CDC-USA.

Table S2. Positivity of SARS-CoV-2 RNA on public touched surfaces at different locations in Recife, Pernambuco state, Brazil.

Location	Site	Number of samples collected	Number os positive surfaces (%)
Transport terminals	01	21	20 (95.2%)
	02	21	16 (76.1%)
	03	21	8 (38.0%)
	04	21	3 (14.2%)
Health care units	05	21	4 (19.0%)
	06	21	3 (14.2%)
	07	21	18 (85.7%)
	08	21	1 (4.76%)
Public parks	09	21	3 (14.2%)
	10	21	4 (19.0%)
	11	21	3 (14.2%)
	12	21	2 (9.52%)
	13	21	2 (9.52%)
Public markets	14	21	2 (9.52%)
	15	21	0 (0%)
	16	21	1 (4.76%)
	17	22	1 (4.54%)
Beach places	18	21	4 (19.0%)
Other places	19	21	2 (9.52%)

Table S2. Positive samples for SARS-CoV-2 RNA on public touched surfaces at different locations in Recife, Pernambuco state, Brazil.

Location	Sample ID*	Surface	Specific location	Type of material	Cq value (N1)
Health care units	01	Standing rest bar	Ambulatory entrance	Metal	37.8
	08	Handle	Hospital access	Metal	36.2
	13	Doorbell	Hospital access	Plastic	36.4
	14	Iron grades	Principal entrance	Metal	38.2
	24	Bench	Principal entrance	Wood	37.3
	36	Bench	Hospital access	Wood	36.3
	39	Light switch	Toilet	Plastic	36.3
	43	Wall	Hospital access	Rock	35.6
	44	Wall	Hospital access	Rock	35.5
	45	Handrail	Hospital access	Metal	37.4
	46	Handrail	Hospital access	Metal	36.6
	47	Handrail	Hospital access	Metal	34.8
	48	Handrail	Hospital access	Metal	36.0
	49	Wall	Hospital access	Rock	36.2
	51	Phone	Public phone	Plastic	38.1
	52	Handrail	Hospital access	Rock	34.8
	53	Traffic light button	Traffic light button	Plastic	34.8
	54	Traffic light button	Traffic light button	Plastic	35.2
	55	Traffic light pole	Traffic light button	Metal	35.3
	57	Traffic light button box	Traffic light button	Metal	36.6
59	Park bench	Bus stop	Concrete	34.4	

	60	Bus stop bench	Bus stop	Metal	36.7
	61	Bus stop ceiling	Bus stop	Plastic	35.0
	62	Trash box	Bus stop	Plastic	35.0
	63	Road sign pole	Resting area	Metal	35.8
	67	Handrail	Resting area	Metal	37.5
Transport terminals	85	Faucet	Toilet	Plastic	34.7
	86	Wall	Toilet	Rock	33.6
	87	Bench	Bench	Wood	37.6
	88	Handrail	Handrail	Metal	36.8
	89	Toilet seat	Toilet	Other (Ceramic)	35.4
	90	Column	Bus terminal access	Concrete	35.9
	91	Faucet	Faucet	Metal	32.2
	92	Bench	Bench	Wood	35.2
	93	Handrail	Handrail	Metal	34.1
	94	Faucet	Toilet	Plastic	34.1
	95	Handrail	Handrail	Metal	36.7
	97	Bench	Bench	Plastic	34.9
	98	Handrail	Handrail	Metal	35.9
	99	ATM button	ATM	Metal	36.0
	100	Biometrics sensors	ATM	Plastic	34.4
	101	Box	ATM	Plastic	35.4
	102	Button	ATM	Metal	33.3
	103	Biometrics sensors	ATM	Plastic	35.0
	104	Walls	Bus stop	Metal	35.4
	105	Protection grid	Bus stop	Metal	36.0
	106	Button	Ticket machine	Other (Rubber)	37.6
	107	Screen	Ticket machine	Glass	33.6
	108	Handrail	Handrail	Metal	34.1

	109	Wall	Toilet	Rock	33.6
	110	Bench	Bench	Concrete	33.7
	111	Roulette	Bus terminal exit	Metal	33.7
	112	Column	Bus terminal access	Concrete	33.7
	113	Wall	Subway station access	Rock	36.5
	114	Handrail	Handrail	Metal	35.4
	116	Biometrics sensors	ATM	Plastic	36.2
	117	Faucet	Faucet	Metal	36.7
	120	Handrail	Handrail	Metal	36.4
	122	Column	Bus terminal access	Concrete	36.7
	123	Pipe	Bus terminal access	Metal	35.3
	124	Protection grid	Bus terminal access	Metal	36.7
	125	Counter	Counter	Rock	37.6
	127	Biometrics sensors	ATM	Plastic	36.4
	133	Bench	Bench	Wood	37.3
	134	Grid	Subway station access	Metal	35.4
	138	Protection grid	Bus terminal access	Metal	38.7
	139	Column	Bus terminal access	Concrete	36.4
	141	Handrail	Handrail	Metal	36.3
	143	Screen	Ticket machine	Glass	36.7
	144	Bench	Bench	Wood	34.6
	155	Keyboard	ATM	Metal	36.4
	156	Biometrics sensors	ATM	Plastic	37.3
	162	Handrail	Handrail	Metal	31.1
Public parks	193	Toy	Playground	Wood	37.7
	197	Floor	Recreation area	Concrete	37.1
	205	Faucet	Toilet	Metal	37.3
	217	Handrail	Outdoor gym	Metal	37.3

	221	Bench	Playground	Wood	37.8
	229	Slide	Playground	Metal	37.3
	231	Barbell	Outdoor gym	Metal	37.2
	237	Swing	Playground	Metal	37.3
	242	Wall	Recreation area	Concrete	36.3
	249	Tree trunk	Recreation area	Wood	36.2
	281	Bench	Recreation area	Wood	37.4
	288	Handrail	Handrail	Metal	37.6
	305	Faucet	Toilet	Plastic	39.7
	311	Barbell	Playground	Metal	37.4
Public markets	319	Faucet	Toilet	Metal	37.5
	320	Door	Toilet	Wood	37.9
	360	Handrail	Principal entrance	Metal	36.9
	386	Grade	Toilet	Metal	38.1
Beach places	177	Tap	Toilet	Metal	36.1
	180	Handrail	Resting area	Wood	37.0
	181	Wall	Toilet	Rock	37.4
	188	Bench	Bench	Rock	37.9
Other places	258	Handrail	Handrail	Metal	38.0
	261	Faucet	Toilet	Plastic	38.7

* Samples were numbered 1 to 400. Numbers shown are the ID of the sample tested positive by RT-qPCR.

Table S4. Viability of SARS-CoV-2 positive surface samples using the Vero CCL-81 lineage.

ID sample	Material	Swab (Cq value)	P3 – 0h (Cq value)	P3 – 72h (Cq value)	Interpretation
86	Rock	33.6	ND	ND	Non-culturable
91	Metal	32.2	ND	ND	Non-culturable
102	Metal	33.2	ND	ND	Non-culturable
107	Glass	33.6	ND	ND	Non-culturable
109	Rock	33.6	ND	ND	Non-culturable
110	Concrete	33.7	ND	ND	Non-culturable
111	Metal	33.7	ND	ND	Non-culturable
112	Concrete	33.7	ND	ND	Non-culturable
162	Metal	31.0	ND	ND	Non-culturable

P3: Passage 3