

1 A Multi-center, Prospective, Observational-cohort controlled study of Clinical Outcomes  
2 following COVID-19 Convalescent plasma therapy in hospitalized COVID-19 patients

3  
4 Lakshmi Chauhan<sup>1,2</sup>, Jack Pattee<sup>3</sup>, Joshay Ford<sup>2</sup>, Chris Thomas<sup>2</sup>, Kelsey Lesteberg<sup>1</sup>,  
5 Eric Richards<sup>4</sup>, Michele Loi<sup>5</sup>, Larry Dumont<sup>2,6</sup>, Kyle Annen<sup>5</sup>, Mary Berg<sup>4</sup>, Mercedes  
6 Zirbes<sup>7</sup>, Amanda Miller<sup>7</sup>, Timothy C. Jenkins<sup>8</sup>, Tellen D. Bennett<sup>5,7,9</sup>, Daniel Monkowski<sup>4</sup>,  
7 Rebecca S. Boxer<sup>10</sup>, and J. David Beckham<sup>1,2,7</sup>

8  
9 1-Department of Medicine, Division of Infectious Diseases, University of Colorado  
10 Anschutz Medical Campus, Aurora, CO.

11 2-University of Colorado School of Medicine, Aurora, CO.

12 3-Center for Innovative Design and Analysis, University of Colorado Anschutz Medical  
13 Campus, Aurora, CO.

14 4-University of Colorado Hospital System, CO.

15 5-Children's Hospital Colorado, Aurora, CO.

16 6-Vitalant Research Institute, Denver, CO.

17 7-Colorado Clinical and Translational Sciences Institute, University of Colorado  
18 Anschutz Medical Campus, Aurora, CO.

19 8-Denver Health Medical Center, Denver, CO.

20 10-Department of Pediatrics, Section of Informatics and Data Science, University of  
21 Colorado Anschutz Medical Campus, Aurora, CO.

22 10-Institute for Health Research, Kaiser Permanente of Colorado, Aurora, CO.

23

24

25 Keywords: COVID-19, convalescent plasma, hospitalization, mortality

26

27

28 Running Title: COVID19 Convalescent Plasma Treatment

29

30 Correspondence: J. David Beckham MD, Department of Medicine, Division of Infectious  
31 Diseases, University of Colorado Anschutz Medical Campus, 12800 East 19th Ave  
32 B8333, Aurora, CO 80045. ([David.beckham@cuanschutz.edu](mailto:David.beckham@cuanschutz.edu)).

33

34 **Article's Main Point:** A multi-center, prospective cohort-controlled trial of COVID19  
35 convalescent plasma therapy in hospitalized COVID19 patients did not show benefit in  
36 time to discharge or inpatient mortality.

37

### 38 **Abstract**

39 Background: The SARS-CoV2 pandemic has caused high inpatient mortality and  
40 morbidity throughout the world. COVID19 convalescent plasma has been utilized as a  
41 potential therapy for patients hospitalized with COVID19 pneumonia. This study  
42 evaluated the outcomes of hospitalized COVID19 patients treated with COVID19  
43 convalescent plasma in a prospective, observational multicenter trial.

44 Methods: From April 2020 through August 2020, hospitalized COVID19 patients at 16  
45 participating hospitals in Colorado were enrolled and treated with COVID19  
46 convalescent plasma (CCP) and compared to hospitalized patients with COVID19 who  
47 were not treated with convalescent plasma. Plasma antibody levels were determined  
48 following the trial given that antibody tests were not approved at the initiation of the trial.  
49 CCP-treated and untreated COVID19 hospitalized patients were matched using  
50 propensity scores followed by analysis for length of hospitalization and inpatient  
51 mortality.

52 Results: 542 total hospitalized COVID19 patients were enrolled at 16 hospitals across  
53 the region. A total of 468 hospitalized COVID19 patients were entered into propensity  
54 score matching with 188 patients matched for analysis in the CCP-treatment and control

55 arms. Fine-Gray models revealed increased length of hospital stay in CCP-treated  
56 patients and no change in inpatient mortality compared to controls. In subgroup analysis  
57 of CCP-treated patients within 7 days of admission, there was no difference in length of  
58 hospitalization and inpatient mortality.

59 Conclusions: These data show that treatment of hospitalized COVID19 patients with  
60 CCP did not significantly improve patient hospitalization length of stay or inpatient  
61 mortality.

62

### 63 **Background:**

64 The ongoing pandemic due to SARS-CoV2 has caused over 150 million cases  
65 and 3 million deaths worldwide as of April 2021. Since the onset of the pandemic,  
66 various therapeutic measures including antivirals, immunomodulatory therapeutics, and  
67 passive antibody therapies have been evaluated for efficacy in the treatment of  
68 COVID19. Convalescent plasma therapy has been utilized for several viral and non-viral  
69 infectious diseases throughout history and was the only means of treating certain  
70 infectious diseases prior to the development of antimicrobial-specific therapy in the  
71 1940s.[1, 2] Experience from prior outbreaks with other coronaviruses, such as SARS-  
72 CoV, shows that convalescent plasma contains neutralizing antibodies to the relevant  
73 virus and neutralizing antibodies may provide therapeutic benefit to acutely infected  
74 patients.[3] In the case of SARS-CoV2, passive antibody therapy with convalescent  
75 plasma may mediate protection by viral neutralization or other mechanisms such as  
76 enhanced phagocytosis and antigen processing of virions.

77 Convalescent plasma, hyper-immune globulin, and monoclonal antibodies are  
78 different passive antibody therapeutics evaluated as possible treatments for COVID-19.  
79 Recent studies of COVID19 convalescent plasma (CCP) therapy in several studies  
80 have shown potential benefit of treatment in hospitalized COVID19 patients.[4-7] Other  
81 studies including randomized, open-label trials have exhibited lack of a clear clinical  
82 benefit from CCP therapy in hospitalized COVID-19 patients.[8-10] Because, each study  
83 exhibits a range of strengths and weaknesses in study design, different targeted patient  
84 populations, and study power, additional studies of CCP therapy in hospitalized COVID-  
85 19 patients are needed to inform appropriate use of CCP as a potential therapeutic  
86 alternative for COVID19.

87 Our study utilized a multi-center trial design across 16 academic and non-  
88 academic hospitals in Colorado in an open-label, prospective, observational, cohort-  
89 controlled trial to evaluate length of hospitalization and inpatient mortality rate in  
90 COVID-19 patients treated with CCP. We found that CCP treatment of hospitalized  
91 COVID19 patients did not significantly alter length of hospitalization or inpatient  
92 mortality rates. These data support recent findings showing that treatment with CCP for  
93 hospitalized COVID19 patients does not significantly improve clinical outcomes.

#### 94 **Methods:**

95 This was an open-label, prospective, multi-center cohort trial comparing  
96 hospitalized patients with COVID-19 who received CCP to hospitalized COVID-19  
97 patients who received standard-of-care treatment. The clinical study was conducted at  
98 16 hospitals in Colorado including UCHealth Metro Denver, UCHealth North, UCHealth  
99 South hospitals, Denver Health Medical Center, Children's Hospital of Colorado, and

100 SCL Health Hospitals. All human clinical trial work on COVID-19 was approved by the  
101 Colorado Multi-Institution Review Board (COMIRB, #20-0986, #20-0990) prior to the  
102 study opening. All hospitals within networks of UHealth, Children's Hospital Colorado,  
103 and Denver Health Medical Center provided CCP through a University of Colorado  
104 Expanded Access program (FDA IND#21426). SCL Health Hospitals provided CCP  
105 through FDA Expanded Access program sponsored by Mayo Clinic. All patients or  
106 designated decision makers provided signed informed consent prior to enrollment into  
107 expanded access programs to receive CCP. The study was conducted from April 2020  
108 through August 2020.

109         Each site prospectively screened eligible patients for inclusion based on pre-  
110 determined inclusion criteria: age 18 years or older, laboratory confirmed diagnosis of  
111 SARS-CoV-2 infection by detection of nucleic acid from a respiratory sample, admission  
112 to a participating facility, COVID-19 pulmonary disease requiring hospitalization,  
113 sufficient COVID19 convalescent plasma available for treatment, and informed consent  
114 provided by the patient or healthcare proxy. Exclusion criteria for the observational  
115 clinical trial included receipt of pooled immunoglobulin in the past 30 days, patients  
116 placed on extracorporeal membrane oxygenation, history of transfusion reaction,  
117 contra-indication to receiving plasma products, and risk of transfusion exceeds potential  
118 benefit based on clinician determination.

119         Control patients were identified, and data captured over each month of the study  
120 using a UHealth database of hospitalized COVID19 patients for each month from April  
121 through August of 2020. Data was abstracted from all hospitalized COVID-19 patients in  
122 the UHealth system that met the inclusion and exclusion criteria above but did not

123 receive CCP therapy over the same time period. As previously described, all patient  
124 data was entered and maintained in a secure, HIPAA-compliant REDCap database.[11]

#### 125 Convalescent Plasma procurement and transfusion

126 FDA approval of the expanded access program for the use of convalescent  
127 plasma was obtained (IND#21426). Convalescent plasma was allocated from FDA-  
128 registered blood establishments (Children's Hospital Colorado, Garth Englund Blood  
129 Center, Vitalant Center) to the treating hospitals using standardized procedures.  
130 COVID-19 convalescent plasma was supplied as an investigational blood product and  
131 was administered according to standard hospital procedures for plasma administration.  
132 Plasma was infused over 1-2 hours (rate of 100-250 ml/hr). Pre-medications, such as  
133 acetaminophen or diphenhydramine were provided as indicated by the treating  
134 physician. One unit of COVID-19 convalescent plasma was administered to anyone  
135 weighing less than 90 kg and 2 units were given to patients over 90kg. Levels of binding  
136 antibodies were assessed using VITROS anti-SARS CoV2 IgG assay. Some CCP units  
137 were provided prior to availability of antibody testing and frozen samples were each  
138 retrospectively tested for antibody. Of 375 units of CCP utilized in the study, 362 met  
139 FDA criteria for positive CCP antibody > 12. Three tested units were negative for  
140 antibody and 10 units were not tested due to lack of frozen sample. The patients that  
141 received these units were included in the full intention-to-treat analysis. Ten patients  
142 enrolled through SCL Health had CCP units tested through the Mayo Clinic Expanded  
143 access program and data was not available for analysis.

#### 144 Propensity Score Matching

145 Propensity score matching was performed to ensure that potential confounding  
146 factors were balanced between the CCP treatment group and the control group.  
147 Propensity score matching is an analysis approach utilized for non-randomized trials to  
148 minimize bias in estimating the treatment effect.[12, 13] Propensity scores are  
149 calculated based on baseline criteria at admission that are expected to influence  
150 outcome. For example, age over 70 years is known to increase risk of a negative  
151 outcome for patients hospitalized with COVID19.[14] Thus, matching patients based on  
152 age in the treatment and control groups will help to decrease possible bias of enrolling  
153 patients of more advanced age in one group. The propensity score was estimated via  
154 logistic regression with no higher order or interaction terms. We conducted greedy  
155 nearest neighbor one-to-one propensity score matching via the R package MatchIt.[15]  
156 A caliper length of 0.2 multiplied by the standard deviation of the logit of the propensity  
157 score was used.[16] Covariate mean balance was assessed via standardized mean  
158 difference, with balance defined to be standardized mean difference  $< 0.1$ .[17] The  
159 matching criteria included ethnicity, age (categorical by decade), admission month  
160 (continuous), sex, hypertension, lung disease, cancer, diabetes, obesity, smoking  
161 status, and immunosuppression. Lung disease was defined as an underlying lung  
162 disorder that requires treatment including asthma, chronic obstructive pulmonary  
163 disease, and interstitial lung disease. Immune suppression was defined as any  
164 condition that results in suppression of immune responses including primary and  
165 secondary immune deficiencies that result from treatment.

166 Statistical analysis

167 We modeled the primary outcome (time to hospital discharge) in a competing  
168 risks framework, where in-hospital mortality is considered to be a competing risk.[18] All  
169 study subjects were observed until time to in-hospital mortality or discharge, thus there  
170 was no censoring. There were a small number of patients who were discharged from  
171 the hospital, and later returned to the hospital and experienced in hospital mortality. The  
172 analysis treated the eventual in-hospital mortality for these patients as unobserved.  
173 Time to discharge and time to inpatient mortality are displayed by the nonparametric  
174 Aalen-Johansen curves. Inference is done via a Fine-Gray model for competing risks  
175 with robust variance estimation for the propensity-matched cohorts (<http://github.com>).  
176 In the Fine-Gray models, time to event is regressed on an indicator variable denoting  
177 treatment status with no other covariates.

## 178 **Results:**

179 In our primary intention to treat analysis, 188 treatment and control subjects were  
180 retained after propensity score matching for 376 total patients included in the trial  
181 (**Figure 1**). The variance ratio was used to assess covariate variance balance, with  
182 balance defined to be a variance ratio  $< 2$ . [19] Covariate balance was achieved after  
183 propensity score matching for the intention to treat analysis (**Figure 2**). Propensity score  
184 matching was also performed for the sub-analyses that limited the study population  
185 based on time to infusion. Covariate balance was achieved for the 7 or fewer days to  
186 infusion analysis and was nearly, but not achieved for the 3 or fewer days to infusion  
187 analysis (**Supplementary Figures 1&2**). Subject characteristics for the propensity  
188 score matched intention to treat analysis are displayed in **Table 1**. Overall, the cohorts  
189 enrolled represented the regional outbreak with higher proportion of older adult patients



190 (mean 58.9 years), male patients (56.9%), and 50.8% of patients in the study identified  
191 as having a Hispanic ethnicity. In the total cohort, 67.2% of CCP-treated patients  
192 identified as white or Caucasian, 15.7% identified as >1 race, 10.4% identified as black  
193 or African American, and 4.8% identified as Asian. During the study, 38.3% of the  
194 patients were enrolled during May of 2020 and 26.3% of the patients were enrolled  
195 during July of 2020 (**Table 1**). Patients were matched based on month of enrollment  
196 due to the rapid changing treatment approaches throughout the pandemic. Comorbid  
197 medical diagnoses including hypertension, diabetes mellitus, and obesity were found in  
198 42-60% of the patients throughout the study and were matched at baseline for each  
199 individual.

200 A total of 468 subjects, 226 in the treatment arm and 242 in the control arm,  
201 underwent propensity score matching (**Figure 1**). For the intention to treat analysis, 376  
202 one-to-one matched CCP treatment and control subjects remained after propensity  
203 score matching. Analysis of patients who received CCP treatment at 7 days or less of  
204 hospitalization resulted in 358 total subjects after matching. For analysis of patients who  
205 received CCP treatment at 3 or fewer days of hospitalization, 322 total subjects  
206 remained after matching.

207 Overall, treatment of hospitalized COVID19 patients with CCP was associated  
208 with a longer hospitalization calculated as a hazard ratio (0.67) for hospital discharge  
209 favoring control COVID19 patients compared to CCP-treated patients ( $p=0.00053$ ,  
210 **Table 2**). As a secondary endpoint, there was no difference in inpatient mortality  
211 ( $p=0.47$ ). Column 4 displays the estimated hazard ratio of treatment status (compared  
212 to control) on hospital discharge and inpatient mortality (**Table 2**). As these coefficients

213 were estimated via Fine-Gray models, they should be interpreted as changes in the  
214 sub-distribution hazard function for each event type.[20] Values less than one indicate  
215 that treatment status reduces the hazard of the corresponding event. The estimated  
216 Aalen-Johansen incidence curves for hospital discharge and in-hospital mortality for  
217 each matched cohort show the probability of hospital discharge or inpatient mortality  
218 over time (**Figure 3**).

219 Analysis of COVID19 patients that received CCP treatment within 7 or 3 days of  
220 admission revealed no significant difference in hospital discharge or inpatient mortality  
221 in CCP treated patients compared to control patients (**Table 2**). The Aalen-Johansen  
222 curves for CCP-treated patients within 7 or 3 days of admission also show no significant  
223 difference in hospital discharge or inpatient mortality when compared to control  
224 COVID19 patients (**Supplementary Figures 3-6**).

225 Four patients had documented adverse events associated with CCP infusion.  
226 Three patients had allergic reactions with pruritus, rash, or urticaria, which resolved  
227 following treatment with acetaminophen and antihistamines. One patient developed a  
228 febrile transfusion reaction which improved with acetaminophen therapy. The  
229 transfusion was stopped in the patient after 60mL, and the patient was included in the  
230 analysis.

### 231 **Discussion:**

232 In this prospective, open-label, multicenter cohort-controlled study, we found that  
233 treatment of hospitalized COVID19 patients with CCP did not significantly improve time  
234 to hospital discharge or inpatient mortality compared to propensity matched controls.

235 Given that hospital discharge is considered a positive endpoint, the fact that treatment  
236 reduces the hazard of hospital discharge is evidence that CCP treatment may have a  
237 negative effect on the prognosis of study participants. However, this statistically  
238 significant effect disappears in the two sub-analyses. This may be because study  
239 participants who received convalescent plasma more than 7 days after hospital  
240 admission differ systematically from the rest of the study population. For example, the  
241 patients that received CCP after 7 days may bias the treatment group to more severe  
242 disease. We also found that CCP treatment status does not have a statistically  
243 significant effect on the hazard of inpatient mortality. It would be difficult to detect an  
244 effect of convalescent plasma treatment on the hazard of inpatient mortality in this study  
245 given the relatively few number of inpatient deaths.

246 Previous, mostly non-controlled trials have suggested a potential benefit of CCP  
247 therapy in hospitalized COVID19 patients. In a retrospective matched cohort study,  
248 patients receiving CCP had decreased 7-day and 14-day mortality but no statistical  
249 difference in 28-day mortality. Similar to our study, the length of hospital stay was  
250 increased in convalescent plasma group suggesting possible selection bias.[7] A  
251 propensity matched study performed at Houston Methodist hospital from March 2020  
252 through September 2020 showed a significant decrease in mortality for patients  
253 transfused within 72 hours of admission with plasma containing anti-RBD IgG titer of >  
254 1:1350. No mortality benefit was noted in patients who received RBD IgG titer of < 1:  
255 1350 or were intubated at the time of admission.[6] In a cohort of 3082 patients who  
256 received convalescent plasma through the Mayo Clinic initiated expanded access  
257 protocol, non-mechanically ventilated patients who received high titer plasma had lower

258 relative risk for death as compared to patients in low titer group. However, this study did  
259 not have a control group.[5]

260 Some randomized studies of CCP therapy in hospitalized COVID19 patients  
261 have shown no evidence of a clinical benefit. An open label RCT done earlier in the  
262 pandemic in China enrolled 103 patients and had to be terminated early due to decline  
263 in cases. This study did not show any benefit of convalescent plasma but was  
264 underpowered for the intended end-points.[21] A smaller study performed in Argentina  
265 of older adults who received convalescent plasma within 72 hours of symptom onset  
266 showed reduced risk of progression in patients receiving convalescent plasma.[22] In  
267 the PLACID trial, an open label multicenter RCT in India, 2 units of convalescent plasma  
268 was transfused. Neutralizing antibody was not found in 20% of the transfused plasma  
269 and median neutralizing antibody ranged widely from 1:30- 1:240. In a smaller subgroup  
270 of patients with pre-existing neutralizing antibody, no benefit was noted[23].

271 The ConCOVID study was a randomized controlled trial comparing CCP with  
272 standard of care therapy. The study was discontinued early after enrollment of 86  
273 patients (43 in each group) because a majority of enrolled patients had high titres of  
274 neutralizing antibody at the time of study enrollment and it was considered futile to  
275 continue further with the study. In this small subset of patients, no significant difference  
276 was noted in mortality or improvement in disease severity.[24]

277 Similar to prior studies, we found that convalescent plasma transfusion was well  
278 tolerated with rare adverse events. [22, 25, 26] In our study, we did not document any  
279 major transfusion reactions including transfusion-associated acute lung injury or

280 hemolytic reactions. Minor transfusion reactions were noted in 4 of 239 patients  
281 (0.017%).

282         This study has several strengths including the multicenter design that included 16  
283 academic and non-academic community hospitals throughout the Colorado front range  
284 region. This resulted in recruitment of hospitalized COVID19 patients that represented  
285 the demographics of the regional COVID19 pandemic with inclusion and analysis of a  
286 diverse cohort of patients. The size of the cohorts analyzed, and the matched control  
287 cohort were also strengths of the study. During this trial, there were no approved  
288 standard therapies including remdesivir or dexamethasone at the time of study.  
289 Weaknesses of the study include the open-label, non-randomized study design and lack  
290 of a placebo control group. While all CCP was evaluated for presence of SARS-CoV2  
291 specific antibody, many of the units were retrospectively tested through individual  
292 regional plasma donation centers resulting in variability in the data. However, this  
293 approach also represented CCP treatment and distribution in the community during the  
294 pandemic.

295

## 296 **Conclusion:**

297 The risks of CCP-treatment in hospitalized COVID19 patients are minimal, this study  
298 shows that treatment with CCP for hospitalized COVID19 patients provides no  
299 significant improvement in length of hospitalization or inpatient mortality. Ongoing  
300 multicenter, randomized controlled trials of CCP treatment for hospitalized and

301 outpatient COVID19 patients are critical to define a potential role for CCP therapy in the  
302 SARS-CoV-2 epidemic.

303 Acknowledgements: This study was supported in part by grant provided through  
304 Colorado Clinical and Translational Sciences Institute (CTSA Grant UL1 TR002535) to  
305 JDB. The study was also supported by institutional funds from University of Colorado  
306 Anschutz Medical Campus, Department of Medicine to JDB.

307 References:

- 308 1. Casadevall, A.; Dadachova, E.; Pirofski, L. A., Passive antibody therapy for infectious diseases.  
309 *Nat Rev Microbiol* **2004**, 2, (9), 695-703.
- 310 2. Casadevall, A.; Scharff, M. D., Return to the past: the case for antibody-based therapies in  
311 infectious diseases. *Clin Infect Dis* **1995**, 21, (1), 150-61.
- 312 3. Zhang, J. S.; Chen, J. T.; Liu, Y. X.; Zhang, Z. S.; Gao, H.; Liu, Y.; Wang, X.; Ning, Y.; Liu, Y. F.; Gao,  
313 Q.; Xu, J. G.; Qin, C.; Dong, X. P.; Yin, W. D., A serological survey on neutralizing antibody titer of  
314 SARS convalescent sera. *J Med Virol* **2005**, 77, (2), 147-50.
- 315 4. Greenbaum, U.; Klein, K.; Martinez, F.; Song, J.; Thall, P. F.; Ramdial, J. L.; Knape, C.; Aung, F. M.;  
316 Scroggins, J.; Knopfmacher, A.; Mulanovich, V.; Borjan, J.; Adachi, J.; Muthu, M.; Leung, C.;  
317 Medina, M. C.; Champlin, R.; Olson, A.; Alousi, A.; Rezvani, K.; Shpall, E. J., High levels of  
318 common cold coronavirus antibodies in convalescent plasma are associated with improved  
319 survival in COVID-19 patients. *medRxiv* **2021**.
- 320 5. Joyner, M. J.; Carter, R. E.; Senefeld, J. W.; Klassen, S. A.; Mills, J. R.; Johnson, P. W.; Theel, E. S.;  
321 Wiggins, C. C.; Bruno, K. A.; Klompas, A. M.; Lesser, E. R.; Kunze, K. L.; Sexton, M. A.; Diaz Soto, J.  
322 C.; Baker, S. E.; Shepherd, J. R. A.; van Helmond, N.; Verdun, N. C.; Marks, P.; van Buskirk, C. M.;  
323 Winters, J. L.; Stubbs, J. R.; Rea, R. F.; Hodge, D. O.; Herasevich, V.; Whelan, E. R.; Clayburn, A. J.;  
324 Larson, K. F.; Ripoll, J. G.; Andersen, K. J.; Buras, M. R.; Vogt, M. N. P.; Dennis, J. J.; Regimbal, R.  
325 J.; Bauer, P. R.; Blair, J. E.; Paneth, N. S.; Fairweather, D.; Wright, R. S.; Casadevall, A.,  
326 Convalescent Plasma Antibody Levels and the Risk of Death from Covid-19. *N Engl J Med* **2021**,  
327 384, (11), 1015-1027.
- 328 6. Salazar, E.; Christensen, P. A.; Graviss, E. A.; Nguyen, D. T.; Castillo, B.; Chen, J.; Lopez, B. V.;  
329 Eagar, T. N.; Yi, X.; Zhao, P.; Rogers, J.; Shehabeldin, A.; Joseph, D.; Masud, F.; Leveque, C.; Olsen,  
330 R. J.; Bernard, D. W.; Gollihar, J.; Musser, J. M., Significantly Decreased Mortality in a Large  
331 Cohort of Coronavirus Disease 2019 (COVID-19) Patients Transfused Early with Convalescent  
332 Plasma Containing High-Titer Anti-Severe Acute Respiratory Syndrome Coronavirus 2 (SARS-CoV-  
333 2) Spike Protein IgG. *The American journal of pathology* **2021**, 191, (1), 90-107.
- 334 7. Shenoy, A. G.; Hettinger, A. Z.; Fernandez, S. J.; Blumenthal, J.; Baez, V., Early mortality benefit  
335 with COVID-19 convalescent plasma: a matched control study. *Br J Haematol* **2021**, 192, (4),  
336 706-713.
- 337 8. Group, R. C., Convalescent plasma in patients admitted to hospital with COVID-19 (RECOVERY): a  
338 randomised controlled, open-label, platform trial. *Lancet* **2021**.
- 339 9. Li, L.; Zhang, W.; Hu, Y.; Tong, X.; Zheng, S.; Yang, J.; Kong, Y.; Ren, L.; Wei, Q.; Mei, H.; Hu, C.;  
340 Tao, C.; Yang, R.; Wang, J.; Yu, Y.; Guo, Y.; Wu, X.; Xu, Z.; Zeng, L.; Xiong, N.; Chen, L.; Wang, J.;

- 341 Man, N.; Liu, Y.; Xu, H.; Deng, E.; Zhang, X.; Li, C.; Wang, C.; Su, S.; Zhang, L.; Wang, J.; Wu, Y.;  
342 Liu, Z., Effect of Convalescent Plasma Therapy on Time to Clinical Improvement in Patients With  
343 Severe and Life-threatening COVID-19: A Randomized Clinical Trial. *Jama* **2020**.
- 344 10. Simonovich, V. A.; Burgos Pratx, L. D.; Scibona, P.; Beruto, M. V.; Vallone, M. G.; Vazquez, C.;  
345 Savoy, N.; Giunta, D. H.; Perez, L. G.; Sanchez, M. D. L.; Gamarnik, A. V.; Ojeda, D. S.; Santoro, D.  
346 M.; Camino, P. J.; Antelo, S.; Rainero, K.; Vidiella, G. P.; Miyazaki, E. A.; Cornistein, W.;  
347 Trabadelo, O. A.; Ross, F. M.; Spotti, M.; Funtowicz, G.; Scordo, W. E.; Losso, M. H.; Ferniot, I.;  
348 Pardo, P. E.; Rodriguez, E.; Rucci, P.; Pasquali, J.; Fuentes, N. A.; Esperatti, M.; Speroni, G. A.;  
349 Nannini, E. C.; Matteaccio, A.; Michelangelo, H. G.; Follmann, D.; Lane, H. C.; Belloso, W. H.;  
350 PlasmAr Study, G., A Randomized Trial of Convalescent Plasma in Covid-19 Severe Pneumonia. *N*  
351 *Engl J Med* **2021**, 384, (7), 619-629.
- 352 11. Harris, P. A.; Taylor, R.; Thielke, R.; Payne, J.; Gonzalez, N.; Conde, J. G., Research electronic data  
353 capture (REDCap)--a metadata-driven methodology and workflow process for providing  
354 translational research informatics support. *J Biomed Inform* **2009**, 42, (2), 377-81.
- 355 12. Pattanayak, C. W.; Rubin, D. B.; Zell, E. R., [Propensity score methods for creating covariate  
356 balance in observational studies]. *Rev Esp Cardiol* **2011**, 64, (10), 897-903.
- 357 13. Rubin, D. B., Propensity score methods. *Am J Ophthalmol* **2010**, 149, (1), 7-9.
- 358 14. Ciceri, F.; Castagna, A.; Rovere-Querini, P.; De Cobelli, F.; Ruggeri, A.; Galli, L.; Conte, C.; De  
359 Lorenzo, R.; Poli, A.; Ambrosio, A.; Signorelli, C.; Bossi, E.; Fazio, M.; Tresoldi, C.; Colombo, S.;  
360 Monti, G.; Fominskiy, E.; Franchini, S.; Spessot, M.; Martinenghi, C.; Carlucci, M.; Beretta, L.;  
361 Scandroglio, A. M.; Clementi, M.; Locatelli, M.; Tresoldi, M.; Scarpellini, P.; Martino, G.; Bosi, E.;  
362 Dagna, L.; Lazzarin, A.; Landoni, G.; Zangrillo, A., Early predictors of clinical outcomes of COVID-  
363 19 outbreak in Milan, Italy. *Clin Immunol* **2020**, 217, 108509.
- 364 15. Stuart, E. A., Matching methods for causal inference: A review and a look forward. *Stat Sci* **2010**,  
365 25, (1), 1-21.
- 366 16. Austin, P. C., Optimal caliper widths for propensity-score matching when estimating differences  
367 in means and differences in proportions in observational studies. *Pharm Stat* **2011**, 10, (2), 150-  
368 61.
- 369 17. Zhang, Z.; Kim, H. J.; Lonjon, G.; Zhu, Y.; written on behalf of, A. M. E. B.-D. C. T. C. G., Balance  
370 diagnostics after propensity score matching. *Ann Transl Med* **2019**, 7, (1), 16.
- 371 18. Brock, G. N.; Barnes, C.; Ramirez, J. A.; Myers, J., How to handle mortality when investigating  
372 length of hospital stay and time to clinical stability. *BMC Med Res Methodol* **2011**, 11, 144.
- 373 19. Austin, P. C., Balance diagnostics for comparing the distribution of baseline covariates between  
374 treatment groups in propensity-score matched samples. *Stat Med* **2009**, 28, (25), 3083-107.
- 375 20. Austin, P. C.; Fine, J. P., Practical recommendations for reporting Fine-Gray model analyses for  
376 competing risk data. *Stat Med* **2017**, 36, (27), 4391-4400.
- 377 21. Li, L.; Zhang, W.; Hu, Y.; Tong, X.; Zheng, S.; Yang, J.; Kong, Y.; Ren, L.; Wei, Q.; Mei, H.; Hu, C.;  
378 Tao, C.; Yang, R.; Wang, J.; Yu, Y.; Guo, Y.; Wu, X.; Xu, Z.; Zeng, L.; Xiong, N.; Chen, L.; Wang, J.;  
379 Man, N.; Liu, Y.; Xu, H.; Deng, E.; Zhang, X.; Li, C.; Wang, C.; Su, S.; Zhang, L.; Wang, J.; Wu, Y.;  
380 Liu, Z., Effect of Convalescent Plasma Therapy on Time to Clinical Improvement in Patients With  
381 Severe and Life-threatening COVID-19: A Randomized Clinical Trial. *Jama* **2020**, 324, (5), 460-  
382 470.
- 383 22. Libster, R.; Perez Marc, G.; Wappner, D.; Coviello, S.; Bianchi, A.; Braem, V.; Esteban, I.;  
384 Caballero, M. T.; Wood, C.; Berrueta, M.; Rondan, A.; Lescano, G.; Cruz, P.; Ritou, Y.; Fernandez  
385 Vina, V.; Alvarez Paggi, D.; Esperante, S.; Ferreti, A.; Ofman, G.; Ciganda, A.; Rodriguez, R.;  
386 Lantos, J.; Valentini, R.; Itcovici, N.; Hintze, A.; Oyarvide, M. L.; Etchegaray, C.; Neira, A.; Name,  
387 I.; Alfonso, J.; Lopez Castelo, R.; Caruso, G.; Rapelius, S.; Alvez, F.; Etchenique, F.; Dimase, F.;  
388 Alvarez, D.; Aranda, S. S.; Sanchez Yanotti, C.; De Luca, J.; Jares Baglivo, S.; Laudanno, S.;

- 389 Nowogrodzki, F.; Larrea, R.; Silveyra, M.; Leberzstein, G.; Debonis, A.; Molinos, J.; Gonzalez, M.;  
390 Perez, E.; Kreplak, N.; Pastor Arguello, S.; Gibbons, L.; Althabe, F.; Bergel, E.; Polack, F. P.;  
391 Fundacion, I.-C.-G., Early High-Titer Plasma Therapy to Prevent Severe Covid-19 in Older Adults.  
392 *N Engl J Med* **2021**, 384, (7), 610-618.
- 393 23. Agarwal, A.; Mukherjee, A.; Kumar, G.; Chatterjee, P.; Bhatnagar, T.; Malhotra, P.; Collaborators,  
394 P. T., Convalescent plasma in the management of moderate covid-19 in adults in India: open  
395 label phase II multicentre randomised controlled trial (PLACID Trial). *Bmj* **2020**, 371, m3939.
- 396 24. Gharbharan, A.; Jordans, C. C. E.; Geurtsvankessel, C.; den Hollander, J. G.; Karim, F.; Mollema, F.  
397 P. N.; Stalenhoef-Schukken, J. E.; Dofferhoff, A.; Ludwig, I.; Koster, A.; Hassing, R.-J.; Bos, J. C.;  
398 van Pottelberge, G. R.; Vlasveld, I. N.; Ammerlaan, H. S. M.; van Leeuwen-Segarceanu, E. M.;  
399 Miedema, J.; van der Eerden, M.; Papageorgiou, G.; Boekhorst, P. t.; Swaneveld, F. H.; Katsikis, P.  
400 D.; Mueller, Y.; Okba, N. M. A.; Koopmans, M. P. G.; Haagmans, B. H. G.; Rokx, C.; Rijnders, B. J.  
401 A., Convalescent Plasma for COVID-19. A randomized clinical trial. *medRxiv* **2020**,  
402 2020.07.01.20139857.
- 403 25. Joyner, M. J.; Bruno, K. A.; Klassen, S. A.; Kunze, K. L.; Johnson, P. W.; Lesser, E. R.; Wiggins, C. C.;  
404 Senefeld, J. W.; Klompas, A. M.; Hodge, D. O.; Shepherd, J. R. A.; Rea, R. F.; Whelan, E. R.;  
405 Clayburn, A. J.; Spiegel, M. R.; Baker, S. E.; Larson, K. F.; Ripoll, J. G.; Andersen, K. J.; Buras, M. R.;  
406 Vogt, M. N. P.; Herasevich, V.; Dennis, J. J.; Regimbal, R. J.; Bauer, P. R.; Blair, J. E.; van Buskirk, C.  
407 M.; Winters, J. L.; Stubbs, J. R.; van Helmond, N.; Butterfield, B. P.; Sexton, M. A.; Diaz Soto, J. C.;  
408 Paneth, N. S.; Verdun, N. C.; Marks, P.; Casadevall, A.; Fairweather, D.; Carter, R. E.; Wright, R. S.,  
409 Safety Update: COVID-19 Convalescent Plasma in 20,000 Hospitalized Patients. *Mayo Clin Proc*  
410 **2020**, 95, (9), 1888-1897.
- 411 26. Joyner, M. J.; Wright, R. S.; Fairweather, D.; Senefeld, J. W.; Bruno, K. A.; Klassen, S. A.; Carter, R.  
412 E.; Klompas, A. M.; Wiggins, C. C.; Shepherd, J. R.; Rea, R. F.; Whelan, E. R.; Clayburn, A. J.;  
413 Spiegel, M. R.; Johnson, P. W.; Lesser, E. R.; Baker, S. E.; Larson, K. F.; Ripoll, J. G.; Andersen, K. J.;  
414 Hodge, D. O.; Kunze, K. L.; Buras, M. R.; Vogt, M. N.; Herasevich, V.; Dennis, J. J.; Regimbal, R. J.;  
415 Bauer, P. R.; Blair, J. E.; Van Buskirk, C. M.; Winters, J. L.; Stubbs, J. R.; Paneth, N. S.; Verdun, N.  
416 C.; Marks, P.; Casadevall, A., Early safety indicators of COVID-19 convalescent plasma in 5000  
417 patients. *J Clin Invest* **2020**, 130, (9), 4791-4797.

418

419



420 **Tables:**

421 **Table 1:** Demographic Data for Propensity score matched control and CCP-treated COVID-19 patients.

422

|                               | <b>Control (n=188)</b> | <b>CCP-Treated (n=188)</b> | <b>Overall (n=376)</b> |
|-------------------------------|------------------------|----------------------------|------------------------|
| <b>Age(Years)</b>             |                        |                            |                        |
| Mean (SD)                     | 59.6 (16.8)            | 58.2(16.3)                 | 58.9(16.5)             |
| Median [Min, Max]             | 58.7[23.6,93.2]        | 58.6[19.3,91.9]            | 58.7[19.3,93.2]        |
| <b>Sex</b>                    |                        |                            |                        |
| Male (%)                      | 55.9%                  | 58%                        | 56.9%                  |
| <b>Ethnicity</b>              |                        |                            |                        |
| Hispanic (%)                  | 51.6%                  | 50%                        | 50.8%                  |
| <b>Admission Month (2020)</b> |                        |                            |                        |
| March                         | 1 (0.5%)               | 1 (0.5%)                   | 2 (0.5%)               |
| April                         | 32 (17%)               | 19 (10.1%)                 | 51 (13.6%)             |
| May                           | 65 (34.6%)             | 79 (42.0%)                 | 144 (38.3%)            |
| June                          | 14 (7.4%)              | 24 (12.8%)                 | 38 (10.1%)             |
| July                          | 57 (30.3%)             | 42 (22.3%)                 | 99 (26.3%)             |
| August                        | 19 (10.1%)             | 23 (12.2%)                 | 42 (11.2%)             |
| <b>Comorbidities</b>          |                        |                            |                        |
| Hypertension (%)              | 47.9                   | 45.2                       | 46.5                   |
| Diabetes (%)                  | 43.1                   | 42.6                       | 42.8                   |
| Obesity (%)                   | 44.1                   | 39.4                       | 41.8                   |
| Immune Suppression (%)        | 5.3                    | 4.8                        | 5.1                    |
| Pre-existing Lung Disease (%) | 11.2                   | 12.8                       | 12                     |
| Smoking Tobacco (%)           | 5.9                    | 6.4                        | 6.1                    |

423

424

425

426 **Table 2:** Number of patients in the matched treatment and control arms that experience primary  
427 (hospital discharge) or secondary (inpatient mortality) outcomes.

428

| Propensity Matched Cohorts              |                    |                        |                      |         |
|-----------------------------------------|--------------------|------------------------|----------------------|---------|
| Outcome Measure                         | Control<br>(n=188) | CCP Treated<br>(n=188) | Hazard Ratio<br>(CI) | P-value |
| Hospital Discharge                      | 165                | 161                    | 0.67(0.54,0.85)      | 0.00053 |
| Inpatient Mortality                     | 23                 | 27                     | 0.81(0.46,1.43)      | 0.47    |
| CCP Infusion within 7 days of Admission |                    |                        |                      |         |
| Outcome Measure                         | Control<br>(n=179) | CCP Treated<br>(n=179) | Hazard Ratio         | P-value |
| Hospital Discharge                      | 158                | 155                    | 0.84 (0.67,1.04)     | 0.11    |
| Inpatient Mortality                     | 21                 | 24                     | 1.08 (0.59,1.97)     | 0.81    |
| CCP Infusion within 3 days of Admission |                    |                        |                      |         |
| Outcome Measure                         | Control<br>(n=161) | CCP Treated<br>(n=161) | Hazard Ratio         | P-value |
| Hospital Discharge                      | 139                | 141                    | 0.77 (0.42,1.42)     | 0.41    |
| Inpatient Mortality                     | 22                 | 20                     | 0.83 (0.66,1.06)     | 0.13    |

429 CCP = COVID19 Convalescent plasma, CI=confidence interval

430

431

### 432 **Figure Legends**

433

434 **Figure 1.** Flow-chart of patient enrollment and Propensity Score Matching.

435

436

437 **Figure 2.** Love plot showing covariate balance in full data set analysis before (red) and after (green)  
438 propensity score matching.

439

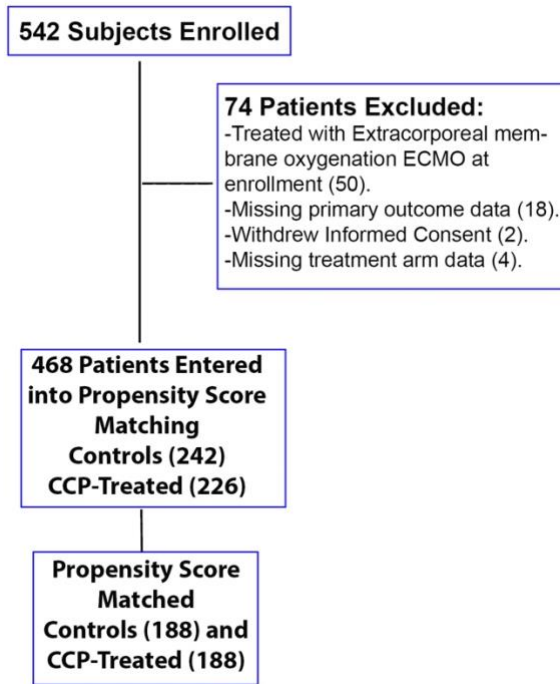
440

441 **Figure 3.** Cumulative incidence curves. **A)** Probability of hospital discharge over time in days. **B)**  
442 Probability of inpatient mortality over time in days. Estimated using Aalen-Johansen analysis.

443

444

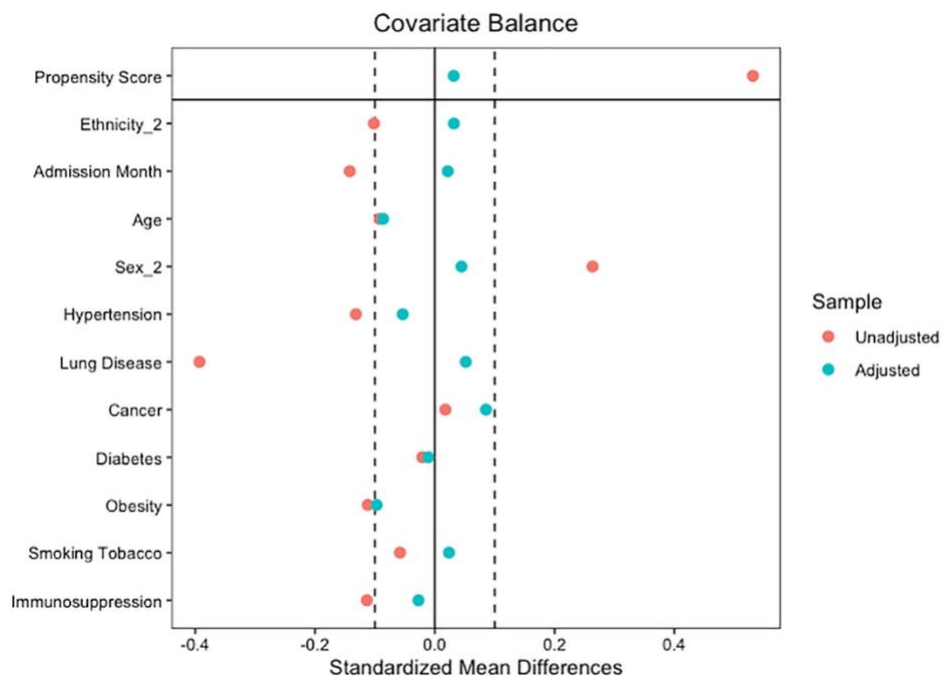
445 **Figure 1:**



446

447

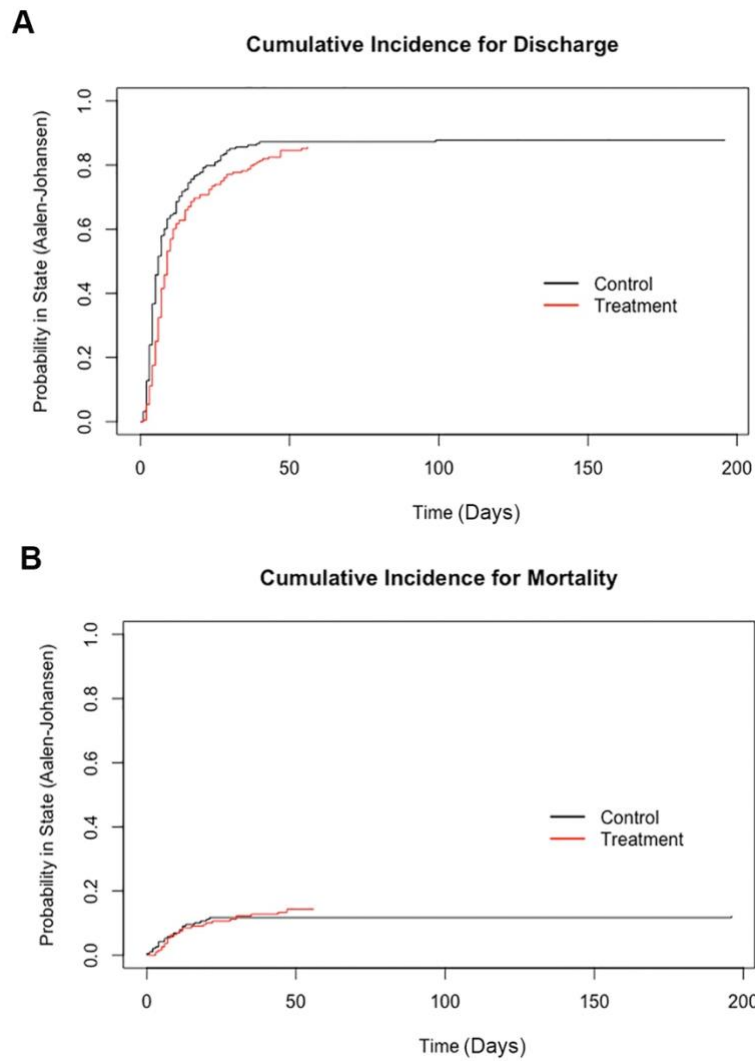
448 **Figure 2**



449

450

451 **Figure 3**

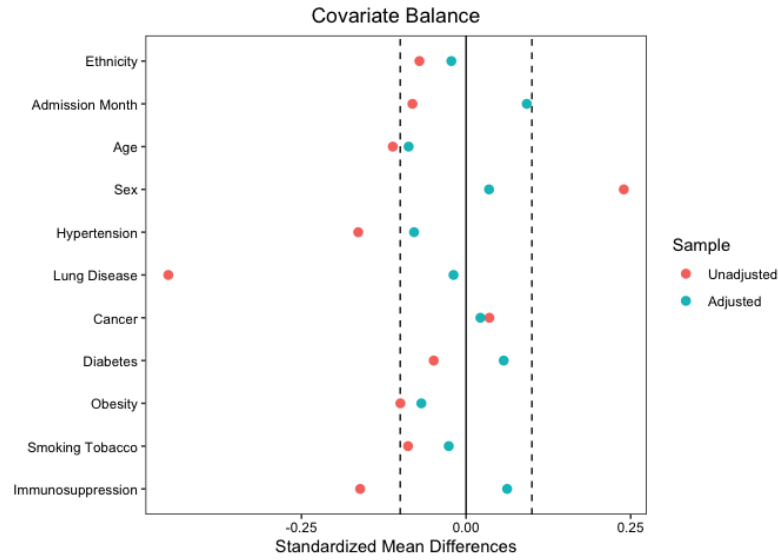


452

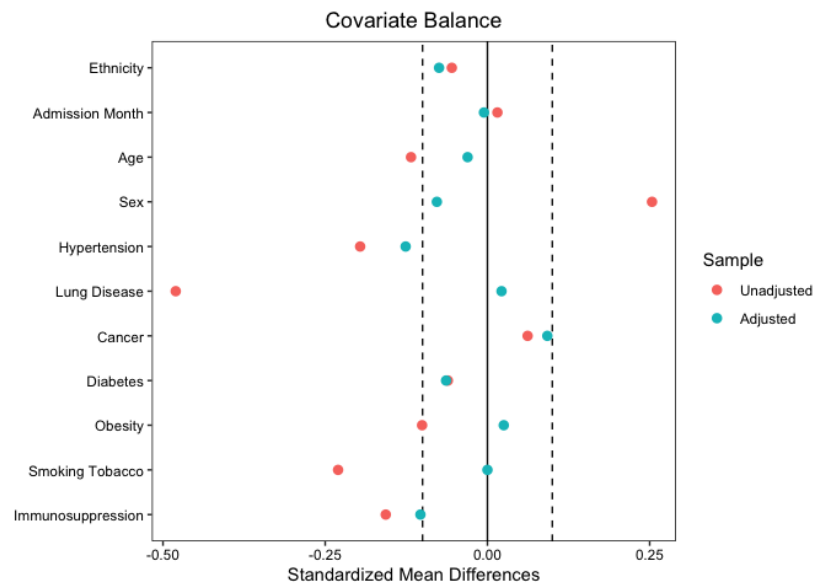
453

454

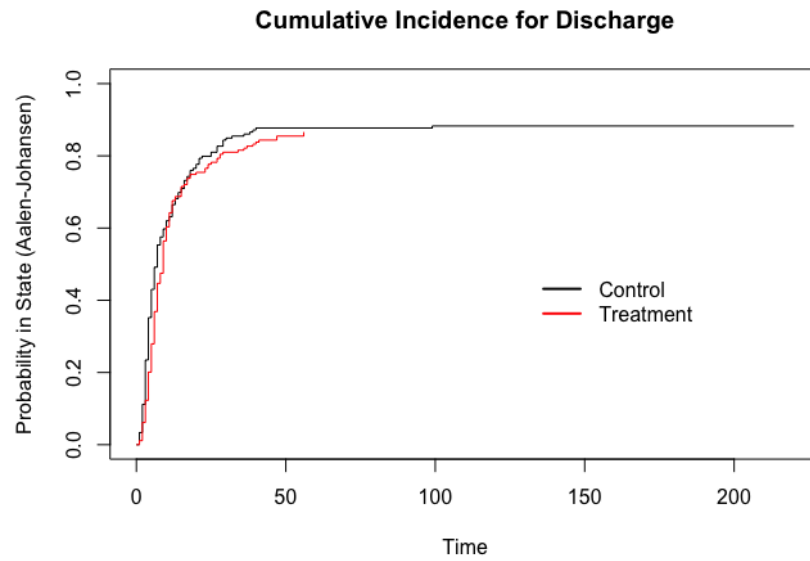
455



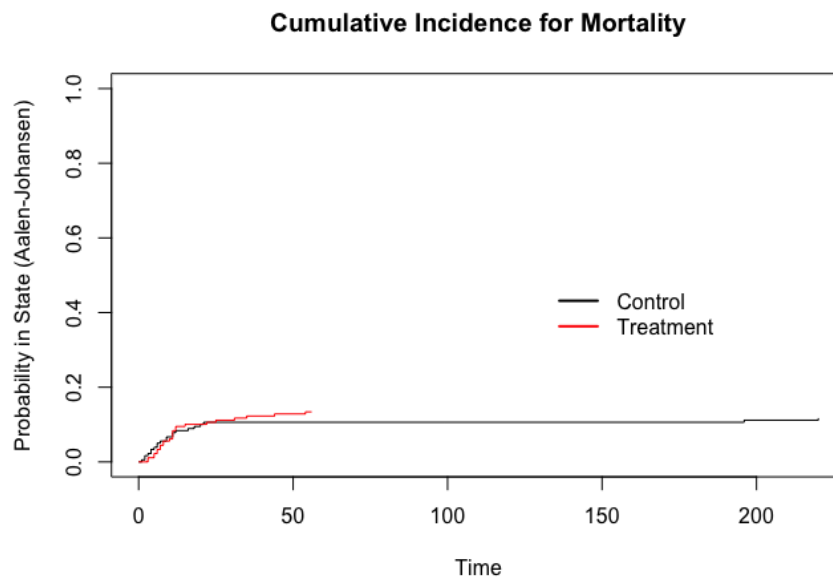
Supplementary Figure 1. Love plot showing covariate balance in the 7 or fewer days to infusion analysis before and after propensity score matching.



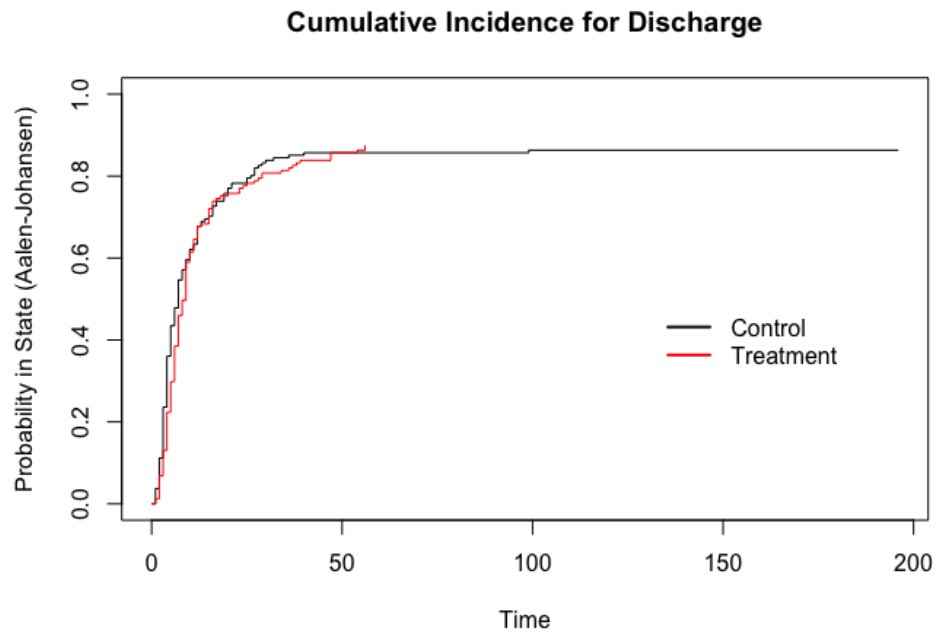
Supplementary Figure 2. Love plot showing covariate balance in the 3 or fewer days to infusion analysis before and after propensity score matching.



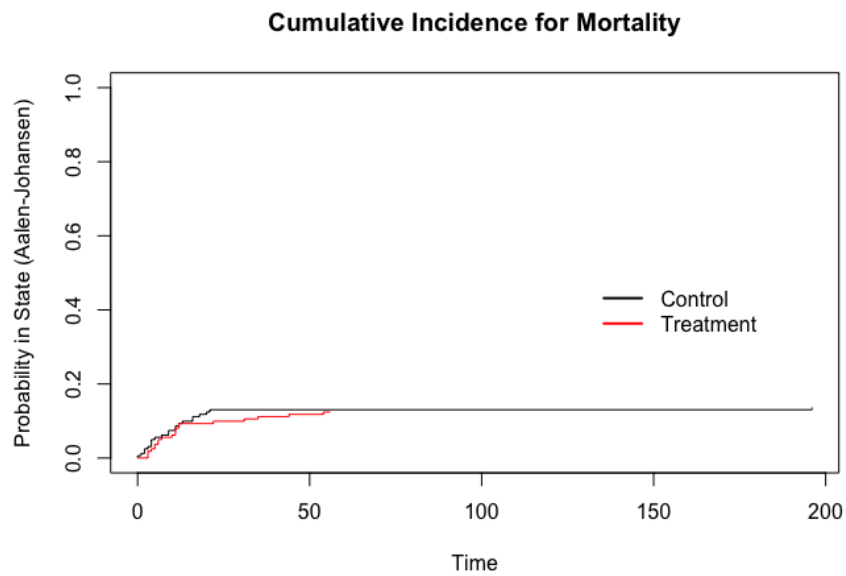
Supplementary Figure 3. Cumulative incidence curve for hospital discharge in the 7 or fewer days to infusion analysis. Estimated via Aalen-Johansen.



Supplementary Figure 4. Cumulative incidence curve for mortality in the 7 or fewer days to infusion analysis. Estimated via Aalen-Johansen.



Supplementary Figure 5. Cumulative incidence curve for hospital discharge in the 3 or fewer days to infusion analysis. Estimated via Aalen-Johansen.



Supplementary Figure 6. Cumulative incidence curve for mortality in the 3 or fewer days to infusion analysis. Estimated via Aalen-Johansen.