

Title: Prevalence of dysphagia in patients with multiple sclerosis; a systematic review and meta-analysis

Running title: Prevalence of dysphagia in MS patients

Authors' list:

Omid Mirmosayyeb^{1,2} (omid.mirmosayyeb@gmail.com)

Narges Ebrahimi² (nargesebrahimi@gmail.com)

Arman Shekarian² (arman.shekarian@gmail.com)

Sara Bagherieh² (sarabagherieh20@gmail.com)

Alireza Afshari-Safavi³ (alireza.afsharisafavi@gmail.com)

Vahid Shaygannejad^{1,2} (v.shaygannejad@gmail.com)

Mahdi Barzegar^{1,2} (barzegar_mahdi73@yahoo.com)

Corresponding author:

Vahid Shaygannejad

Department of Neurology, School of Medicine, Isfahan University of Medical Sciences, Isfahan, Iran.

Isfahan Neurosciences Research Center, Isfahan University of Medical Sciences, Isfahan, Iran.

Mail: v.shaygannejad@gmail.com

Cell: +98 913 313 3550

Affiliations:

¹ Department of Neurology, School of Medicine, Isfahan University of Medical Sciences, Isfahan, Iran.

² Isfahan Neurosciences Research Center, Isfahan University of Medical Sciences, Isfahan, Iran.

³ Department of Biostatistics and Epidemiology, Faculty of Health, North Khorasan University of Medical Sciences, Bojnurd, Iran

Funding: none

Conflict of interest: none to be declared

Ethical considerations: not applicable

Consent to participate: not applicable

Consent for publication: not applicable

Availability of data and material: All of the data will be available for secondary analysis in necessary cases from the corresponding author through email address.

Code availability: not applicable

Number of tables: 2

Number of figures: 5

Number of supplementary materials: 1

Authors' contributions:

Conceptualization: OM, MB, VSh.

Data curation: OM, AAS.

Formal Analysis: OM, AAS.

Funding acquisition: VSh.

Investigation: NE, ASh, SB.

Methodology: OM, MB, NE, ASh, SB.

Project administration: OM, VSh.

Resources: VSh.

Software: OM, AAS.

Supervision: VSh.

Validation: OM, AAS, VSh.

Visualization: OM, VSh.

Writing – original draft: SB.

Writing – review & editing: OM, MB, SB, NE, ASh.

Prevalence of dysphagia in patients with multiple sclerosis; a systematic review and meta-analysis

Abstract:

Objectives: Dysphagia is a major comorbidity observed in patients with multiple sclerosis, yet different prevalence rates are reported for it. Therefore, we have designed this systematic review to estimate the pooled prevalence of dysphagia in patients with MS.

Method: We searched PubMed, Scopus, EMBASE, Web of Science, and gray literature including references from the identified studies, reviews studies, and conference abstracts which were published up to February 2021. Articles that were relevant to our topic and could provide information regarding the prevalence of dysphagia among MS patients were included; however, articles with self-report screening strategies were excluded.

Results: The literature search found 1993 articles. After eliminating duplicates, 1272 articles remained. Sixteen abstract conference papers were included for final analysis. A total of 10846 MS cases and 4913 MS patients with dysphagia included in the analysis. The pooled prevalence of dysphagia in the included studies was 45.3% (95% CI: [40.7%-50%])

Conclusion: The results of this systematic review shows that the prevalence of dysphagia in MS patients is 45% which is greatly higher compared to the general population.

Keywords: Multiple Sclerosis, Demyelinating Diseases, Autoimmune Diseases, Dysphagia, Prevalence

Introduction:

Multiple Sclerosis (MS) is an autoimmune disease caused by the demyelination of neurons within the Central Nervous System (CNS). It is generally more prevalent among women and younger people and deteriorates patients' lifestyles in every manner ranging from personal, social, occupational, to marital aspects.(1,2) MS can be classified based on its clinical manifestation and course of progression, as there are many differences in the manifestation of MS between different patients of different ages, genders, races,

genetic, and even geographical backgrounds. However, symptoms associated with MS ordinarily pivot around sensory and motor dysfunctions. Such dysfunctions include but are not limited sensory deficits such as vision, hearing, and olfaction loss, besides motor deficits being gastrointestinal, bladder-control, gait, and swallowing disorders.(3–5)

Swallowing or deglutition is a half-automated motor action that requires the involvement of respiratory, oropharyngeal, and gastrointestinal muscles. This process is thought to occur in four stages: oral preparatory, oral, pharyngeal, and esophageal stages. Any difficulty swallowing can be loosely termed “Dysphagia”. Dysphagia has been known as a clinical finding in MS since as early as the 19th century.(6,7) The prevalence of dysphagia among MS patients has in fact been shown to be higher than that of the normal population. Swallowing is an orchestration of numerous muscles, cranial nerves, and neural pathways and MS lesions can affect the process in any of the four stages, leading to disturbances in this mechanism that can cause clinical symptoms such as weight loss, dehydration, halitosis, and even aspiration pneumonia in the affected MS patients.(8) Such patients are increasingly prone to developing severe dysphagia as it is a frequently overlooked symptom among physicians and is almost always under-reported unless it co-occurs with episodes of aspiration pneumonia that is caused when a damaged control mechanism, due to dysphagia, allows food to be misled to the respiratory tract. Identifying dysphagia in the early stages can help reduce its consequences and apply better preventive measures to stop the progression of symptoms in those at risk.(4,9)

Regarding the growing evidence on the higher prevalence of dysphagia among MS patients and the importance of dysphagia as a part of MS disease follow-up, the present study has been conducted to estimate the prevalence of dysphagia in MS patients and to assess the potential risk factors.

Methods:

Literature search:

We searched PubMed, Scopus, EMBASE, Web of Science, and gray literature including references from the identified studies, review studies, and conference abstracts which were published up to February 2021.

Inclusion criteria:

Studies reporting the prevalence of dysphagia among MS participants with a sample size of over at least 10 patients, for whom the diagnosis of dysphagia in MS patients was made using any strategy other than self-report methods were included.

Nevertheless, case reports and case series articles, articles that were written in any language other than English, and any study that had used self-report screening methods as the means to diagnosing dysphagia among MS patients were excluded. Studies with unclear diagnostic methods were excluded as well.

Data search and extraction:

We conducted a systematic computerized search using four data banks: PubMed (NCBI), Scopus, web of science, and Embase. We also searched the gray literature including references from the identified studies, reviews studies, and conference abstracts which were published up to February 2021.

We used Mesh terms and text words to generate a syntax that included two components. First, we used "Deglutition Disorders", "Deglutition Disorder", (Disorders AND Deglutition), "Swallowing Disorders", "Swallowing Disorder", "Dysphagia", "Oropharyngeal Dysphagia", (Dysphagia AND Oropharyngeal), "Esophageal Dysphagia", (Dysphagia AND Esophageal), (difficult* AND swallowing), and (difficult* AND deglutition) to identify the first component of our search and "Multiple Sclerosis", (Sclerosis AND Multiple), (Sclerosis AND Disseminated), "Disseminated Sclerosis", "MS, (Multiple Sclerosis)", ("Multiple Sclerosis" AND "Acute Fulminating" were the words we used to identify the other search component.

Additionally, we customized our search syntax (query) for each data bank. Two researchers independently screened the articles. The following data was extracted from the included studies: first author, region, publication date, type of study, sample size of case and control, and the demographic variables for case and control such as sex and mean age. Other variables that we collected in our table included the exact name of the dysphagia diagnostic test which included instrumental techniques, clinical examinations, screening strategies or other techniques, MS subtype, disease duration, EDSS score, number of slight, alarming, moderate, and severe dysphagia in both case and control. Besides, number of dysphagia was reported in categories as follows: different MS subtypes, solid and liquid dysphagia, oropharyngeal, oral, pharyngeal, esophageal, neurogenic, and functional dysphagia. Moreover, number of aspirations due to dysphagia was among the variables that we extracted from articles.

Statistical analysis

Meta-analysis was performed using STATA 14 software (STATA Corporation, College Station, Texas, USA). A forest plot was applied to show the prevalence of dysphagia across all included studies and the pooled prevalence with corresponding 95% confidence intervals (95% CI). The Cochran's chi-square test and inconsistency index (I^2) were used to check between study heterogeneity. If the I^2 statistics was greater than 75% (high heterogeneity), a random effect model was done using DerSimonian and Laird approach.

Subgroup analysis was conducted by diagnostic test method (instrumental strategies, screening strategies, clinical examination strategies and other strategies), sample size (≤ 100 and > 100), publication year (≤ 2010 and > 2010), EDSS (≤ 4 and > 4) and disease duration (≤ 10 and > 10). A funnel plot of logit transformed prevalence was applied to investigate publication bias with Egger regression asymmetry and Begg's tests. If evidence of publication bias was observed, then trim and fill technique was used to adjust the effects. Level of statistical significance for all tests was considered to be less than 0.05.

Results:

The literature search found 1993 articles. After eliminating duplicates, 1272 articles remained. Sixteen abstract conference papers were included for final analysis. A total of 10846 MS cases and 4913 MS patients with dysphagia included in the analysis. The pooled prevalence of dysphagia in the included studies was 45.3% (95% CI: [40.7%-50%]) (Figure 1)

Critical appraisal

The quality of all the included articles was assessed using the Joanna Briggs Institute (JBI) critical appraisal checklist. The JBI checklist is the preferred tool for measuring the quality of descriptive studies reporting prevalence data and has a system of ranking articles based on the number of “YES” answers they earn according to its questions. The number of “YES” answers an article can earn ranges between 0 to 9.(10) Using this checklist, 8 Of the included studies earned less than 4 “YES” answers, 22 studies earned between 4 to 6 “YES” answers, and 4 studies earned more than 6 “YES” answers. (Supplementary 1)

	Q1 Was the sample frame appropriate to address the target population?	Q2 Were study participants sampled in an appropriate way?	Q3 Was the sample size adequate?	Q4 Were the study subjects and the setting described in detail?	Q5 Was the data analysis conducted with sufficient coverage of the identified sample?	Q6 Were valid methods used for the identification of the condition?	Q7 Was the condition measured in a standard, reliable way for all participants?	Q8 Was there appropriate statistical analysis?	Q9 Was the response rate adequate, and if not, was the low response rate managed appropriately?
Levinthal,2013	NO	NO	YES	NO	UNCLEAR	YES	YES	YES	UNCLEAR
Danesh Pajouh, 2017	NO	NO	YES	YES	UNCLEAR	YES	YES	YES	UNCLEAR
Thomas,1999	NO	NO	NO	YES	UNCLEAR	YES	YES	YES	UNCLEAR

Calcagno, 2002	NO	NO	YES	YES	UNCLEAR	YES	YES	YES	UNCLEAR
DePauw,2002	YES	NO	YES	YES	UNCLEAR	YES	YES	YES	UNCLEAR
Printza,2019	NO	NO	YES	YES	UNCLEAR	YES	YES	YES	UNCLEAR
Santos,2019	NO	NO	NO	YES	UNCLEAR	YES	YES	YES	UNCLEAR
Beckmann, 2015	UNCLEAR	UNCLEAR	NO	NO	UNCLEAR	YES	YES	YES	UNCLEAR
Alfonsi, 2013	NO	NO	NO	NO	UNCLEAR	YES	YES	YES	UNCLEAR
Di Stadio, 2021	NO	NO	NO	YES	YES	YES	YES	YES	YES
Covello, 2020	NO	UNCLEAR	YES	NO	UNCLEAR	YES	YES	YES	UNCLEAR
Abraham, 1997	NO	NO	YES	NO	YES	UNCLEAR	YES	YES	UNCLEAR
Goncalves,2016	NO	NO	NO	NO	UNCLEAR	YES	YES	YES	UNCLEAR
Poorjavad, 2010	NO	NO	YES	YES	UNCLEAR	YES	YES	YES	UNCLEAR
Fernandes,2013	NO	UNCLEAR	YES	NO	UNCLEAR	YES	YES	YES	UNCLEAR
Klugman,2002	YES	NO	NO	NO	NO	UNCLEAR	YES	YES	UNCLEAR
Tarameshlu,2017	YES	NO	YES	YES	NO	YES	YES	YES	UNCLEAR
Solaro, 2019	YES	NO	YES	YES	YES	YES	YES	YES	UNCLEAR
Solaro,2013	YES	YES	YES	YES	YES	YES	YES	YES	UNCLEAR
Tahir,2020	NO	NO	NO	NO	NO	YES	YES	YES	UNCLEAR
Johansson,2020	YES	NO	YES	NO	NO	UNCLEAR	YES	YES	UNCLEAR
Hartelius,1994	NO	UNCLEAR	YES	NO	NO	NO	YES	YES	UNCLEAR
Wiesner, 2001	NO	NO	UNCLEAR	NO	NO	YES	YES	YES	UNCLEAR
Sadeghi,2020	NO	NO	YES	YES	UNCLEAR	YES	YES	YES	UNCLEAR
Bergamaschi, 2008	YES	NO	YES	YES	YES	YES	YES	YES	UNCLEAR
Alali, 2018	YES	YES	YES	YES	UNCLEAR	YES	YES	YES	UNCLEAR
Printza,2020	NO	NO	YES	YES	UNCLEAR	YES	YES	YES	UNCLEAR
Milewska,2020	NO	NO	NO	NO	UNCLEAR	YES	YES	YES	UNCLEAR
Sales,2013	NO	NO	YES	YES	UNCLEAR	YES	YES	YES	UNCLEAR
Bergamaschi, 2009	YES	NO	YES	YES	UNCLEAR	YES	YES	YES	UNCLEAR
Jafari, 2018	NO	NO	YES	YES	UNCLEAR	YES	YES	YES	UNCLEAR
Tenekeci,2018	NO	NO	YES	NO	UNCLEAR	YES	YES	YES	UNCLEAR

Barzegar, 2021	NO	UNCLEAR	YES	NO	UNCLEAR	YES	YES	YES	UNCLEAR
Danesh-Sani,2013	YES	NO	YES	NO	UNCLEAR	YES	YES	YES	UNCLEAR

Supplementary 1 Table of quality assessment using the JBI checklist

Prevalence estimates

The overall prevalence of dysphagia across all 57 studies was 45.3% (95% CI: [40.7%-50%]), with a high level of heterogeneity ($Q=$; $I^2=95.17%$; $p<0.001$). The highest and lowest prevalence of dysphagia was reported by Zenginler et al. (prevalence=100%; 95% CI: [88.8%-100%]) and Almerie et al. (prevalence=9%; 95% CI: [4%-16.9%]), respectively.

Subgroup analysis

The prevalence estimates are presented by dysphagia diagnostic test (instrumental strategies, screening strategies, clinical examination strategies and other strategies) in Figure 2, Figure 3, Figure 4, and Figure 5. There was high heterogeneity in all the four analyses ($I^2=$ 94.89%, 94.15%, 93.65% and 88.73%, respectively). The pooled prevalence of dysphagia based on instrumental strategies (prevalence=65.7%; 95% CI: [51.3%-78.9%]) was higher than screening strategies (prevalence=44.1%; 95% CI: [38.9%-49.3%]), clinical examination strategies (prevalence=38.4%; 95% CI: [21.6%-56.6%]) and other strategies (prevalence=29%; 95% CI: [22.1%-36.4%]).

Subgroup analysis using, sample size, publication year, EDSS and disease duration was reported in Table 1. The pooled prevalence of dysphagia was higher in studies with a sample size less than 100 compared to those sample size greater than 100 (55.5% vs. 37.8%, $p=0.019$). However, prevalence of dysphagia was not significantly different in terms of publication year (47.5% vs. 44.3%, $p=0.836$), EDSS (46.8% vs. 58.2%, $p=0.255$) and disease duration (41% vs. 37.3%, $p=0.585$).

Table 1: Subgroup analysis of pooled prevalence of dysphagia						
Subgroup by		No. of	Total	Pooled prevalence	Heterogeneity I^2	p-value

		studies	sample size	(95% CI)		
Sample size	≤ 100	28	1330	55.5% (43.4%-67.3%)	94.76	0.019
	> 100	29	9516	37.8% (33.4%-42.3%)	94.67	
publication year	≤ 2010	14	3458	47.5% (40.1%-54.9%)	92.03	0.836
	> 2010	43	7388	44.3% (38.4%-50.3%)	95.78	
EDSS	≤ 4	19	5547	46.8% (39.5%-54.1%)	95.74	0.255
	> 4	13	1674	58.2% (48%-68.1%)	92.88	
Disease duration	≤ 10	10	1800	41% (29.7%-52.7%)	94.98	0.585
	> 10	16	6034	37.3% (31.4%-43.4%)	94.78	

Table 1 Subgroup analysis of pooled prevalence of dysphagia

Publication bias

No publication bias was found among the studies that were based on the instrumental strategies (bias= 4.01; p=0.051), clinical examination strategies (bias= 2.13; p=0.394) and other strategies (bias= 0.884; p=0.669), as depicted by the funnel plot (Figure 5) and the results of Egger's and Begg's tests. However, the evidence of publication bias was observed among the screening strategies-based studies (bias= 3.02; p=0.005), but the trim and fill method showed no need for additional studies. (Table 2)

Author	Study design	Country	MS sample	#MS Female/male	MS Age (Year)	MS type	Disease Duration (year)	EDSS	Dysphagia Diagnosis criteria	Strategy criteria
Barzegar, 2021	cross-sectional	Iran	865	F 719 M 146	Mean: 37.95 SD: 9.25	RRMS 738 SPMS 106 PPMS 21	Mean: 8.02 5.39	NR	DYMUS	Screening strategy
Di Stadio, 2021	cross-sectional	Italy	40	F 31 M 9	Mean: 49.1 SD: 10.3	RRMS 40	Mean: 14.8 SD: 7.5	Mean: 2.88 SD: 2.2	ENT-MS-12 questionnaire	Screening strategy
Covello, 2020	cross-sectional	Italy	101	F 54 M 47	Range: 12-70	NR	NR	NR	DYMUS	Screening strategy
Johansson, 2020	cross-sectional	Sweden	440	F 346 M 94	Mean: 51.4 SD: 10.7	RRMS: 176 SPMS: 128 PPMS: 62	Mean: 12.8 SD: 9.8	NR	author constructed questionnaire (26 questions)	Other
Milewska, 2020	cross-	Poland	64	NR	NR	NR	NR	NR	DYMUS/EAT-10/SDQ	Other

	sectional										
Printza,2020	case-control	Greece	153	F 105 M 48	Mean: 43.19 SD: 11.93	RRMS: 110 SPMS: 25 PPMS: 18	Mean: 12.49 SD: 8.47	Mean: 3.85 SD: 1.96	EAT-10	Screening strategy	
Printza,2020	case-control	Greece	153	F 105 M 48	Mean: 43.19 SD: 11.93	RRMS: 110 SPMS: 25 PPMS: 18	Mean: 12.49 SD: 8.47	Mean: 3.85 SD: 1.96	DYMUS	Screening strategy	
Sadeghi,2020	cross- sectional	Iran	108	F 76 M 32	Mean: 36.8 SD: 9.3	RRMS: 80 SPMS: 17 PPMS: 11	Mean: 10.4 SD: 7.4	Mean: 3.1 SD: 2.1	DYMUS	Screening strategy	
Tahir,2020	cross- sectional	Turkey	64	F 42 M 22	Mean: 37.8 SD: 10.7	RRMS: 38 SPMS: 7 PPMS: 19	Mean: 9.2 SD: 6.1	NR	DYMUS	Screening strategy	
Bonifacic, 2019	Case-Control	Croatia	33	F 24 M 9	Mean: 56.3 SD: 9.16	NR	NR	NR	questionnaire about the occurrence of orofacial symptoms	Other	
Conte, 2019	cross_sectional	USA	130	F 100 M 30	Mean: 51.3 SD: 13.3	RRMS 118 SPMS 6 PPMS 6	NR	NR	DYMUS	Screening strategy	
Printza,2019	cross- sectional	Greece	108	F 78 M 30	Mean: 41.6 SD: 11.9	RRMS: 85 SPMS: 12 PPMS: 10	Mean: 10.9 SD: 7.8	Mean: 3.8 SD: 1.9	DYMUS	Screening strategy	
Printza,2019	cross- sectional	Greece	108	F 78 M 30	Mean: 41.6 SD: 11.9	RRMS: 85 SPMS: 12 PPMS: 10	Mean: 10.9 SD: 7.8	Mean: 3.8 SD: 1.9	EAT-10	Screening strategy	
Sales,2019	cross- sectional	Brazil	30	F 24 M 6	Med: 44 Range: : 18- 70	NR	NR	NR	DYMUS	Screening strategy	
Santos,2019	case-control	Brazil	30	F 24 M 6	Mean: 37.57 SD: 11.37	RRMS 30	Mean: 7.2 SD: 4.53	Mean: 3.6 SD: 1.61	DYMUS	Screening strategy	
Solaro, 2019	cross- sectional	Italy	215	F 133 M 82	Mean: 50 SD: 11.9	RRMS: 103 SPMS: 103 PPMS: 9	Mean: 15.1 SD: 10.2	Mean: 5.4 SD: 2.4	FEES	Instrumental	
Alali, 2018	cross- sectional	Australia	103	F 81 M 22	Mean: 47 Range: 20.4-79.2	RRMS 82 SPMS 10 PPMS 11	Mean: 9.6 Range: 0.3-37.8	Mean: 2.5 Range: 0-9	EAT-10	Screening strategy	
Fathi, 2018	cross- sectional	Egypt	100	NR	NR	NR	NR	NR	FEES	Instrumental	
Jafari, 2018	cross-	Iran	200	F 168	Mean:	RRMS 151	Mean:	Mean:	DYMUS	Screening	

	sectional			M 32	34.54 SD: 8.53	SPMS 41 PPMS 8	5.95 SD: 4.56	5.95 SD: 4.56		strategy
Ruhaak, 2018	cross-sectional	Netherlands	63	NR	NR	NR	NR	NR	FEES	Instrumental
Tenekeci,2018	cross-sectional	Turkey	117	F 79 M 38	Mean: 36.6 SD: 10.1	RRMS: 95 SPMS: 11 PPMS: 8 PRMS: 2	NR	Mean: 2.1 SD: 2.4	DYMUS	Screening strategy
Danesh Pajouh, 2017	cross-sectional	Iran	105	F 84 M 21	Mean: 33.89 SD: 8.56	RRMS 93 SPMS 7 PPMS 3 PRMS 2	Mean: 3.52 SD: 3.12	Mean: 1.87 SD: 1.32	DYMUS	Screening strategy
Tarameshlu,2017	cross-sectional	Iran	230	F 168 M 62	Mean: 43.71 SD: 8.7	RRMS: 154 SPMS: 63 PPMS: 13	Mean: 7.2 SD: 2.9	Mean: 3.04 SD: 1.8	(MASA)	Other
Zenginler,2017	cross-sectional	Turkey	31	F 27 M 4	Mean: 43.81 SD: 10.15	NR	Mean: 10.32 SD: 7.38	Mean: 3.01 SD: 1.94	DYMUS	Screening strategy
Beckmann, 2016	Case-Control	Turkey	49	NR	NR	RRMS 49	NR	NR	EEG	Instrumental
Beckmann,2016	Case-control	Turkey	49	NR	NR	RRMS: 49	NR	NR	clinical evaluation	clinical evaluation
Goncalves,2016	case-control	Brazil	34	F 25 M 9	median:38 Range: :17_64	NR	NR	NR	NOTS	clinical evaluation
Beckmann, 2015	case-control	Turkey	51	F 37 M 14	Mean: 32.2 Range: : 15-66	RRMS: 51	4.52 Range: : 1-20	NR	EMG	Instrumental
Beckmann,2015	case-control	Turkey	51	F 37 M 14	Mean: 32.2 Range: 15-66	RRMS: 51	Mean: 4.52 Range: 1-20	NR	clinical evaluation	clinical evaluation
Constantinou, 2015	cross-sectional	Ireland	115	F 69 M 46	Mean: 48.2 SD: 11.8	NR	NR	Mean: 4.7 SD: 2.4	VFSS	Instrumental
Alfonsi, 2013	case-control	Italy	26	F 19 M 7	Mean: 46.5 SD: 13.2	RRMS: 9 SPMS: 9 PPMS: 8	NR	Mean: 4.7 SD: 2.3	FEES	Instrumental
Alfonsi, 2013	case-control	Italy	26	F 19 M 7	Mean: 46.5 SD: 13.2	RRMS: 9 SPMS: 9 PPMS: 8	NR	Mean: 4.7 SD:2.3	EPSS(EMG)	Instrumental

Alfonsi, 2013	case-control	Italy	26	F 19 M 7	Mean: 46.5 SD: 13.2	RRMS 9 SPMS 9 PPMS 8		Mean: 4.7 SD: 2.3	DYMUS	Screening strategy
Chauvet, 2013	cohort	France	150	NR	NR	NR	NR	NR	DYMUS	Screening strategy
Danesh-Sani, 2013	cross-sectional	Iran	500	F 341 M 159	Mean: 44.65 SD: 10.82	NR	NR	NR	clinical evaluation	clinical evaluation
Fernandes, 2013	cross-sectional	Brazil	120	F 95 M 25	Mean: 38.5 SD: 10.2	RRMS: 79 SPMS: 35 PPMS: 6	NR	Mean: 3.9 SD: 2.5	Video-endoscopic	Instrumental
Levinthal, 2013	cross-sectional	USA	218	F 170 M 48	Mean: 47.6	RRMS: 154 SPMS: 35 PPMS: 9	Mean: 13.3	NR	Rome III criteria	Other
Sales, 2013	cross-sectional	Brazil	100	F 69 M 31	Mean: 42.5 Range: 13- 69	RRMS: 66 SPMS: 16 PPMS: 18	Med:8 Range: :0_40	median: 3 Range: :0_9	DYMUS	Screening strategy
Solaro, 2013	cross-sectional	Italy	1875	F 1290 M 585	Mean: 43.34 Range: 12- 78	RRMS: 1303 SPMS: 447 PPMS: 125	Mean: 11.42 Range: 1- 52	Mean: 3.3 Range: 0-9	DYMUS	Screening strategy
Villain, 2013	cross-sectional	France	174	NR	Mean: 44.2	NR	Mean: 13.6	Mean: 3.6	DYMUS	Screening strategy
Araya, 2012	Cohort	Chile	84	NR	NR	RRMS: 84	NR	NR	clinical evaluation	clinical evaluation
Zwanzger, 2012	cross-sectional	Great Britain	60	NR	NR	NR	NR	NR	GUSS	Other
Almerie, 2011	cross-sectional	UK	89	NR	NR	NR	NR	NR	Rome II questionnaire	Other
Poorjavad, 2010	cross-sectional	Iran	101	F 81 M 20	Mean: 34 SD: 9.3	RRMS 75 SPMS 19 PPMS 7	Mean: 5.9 5	Mean: 2.26 SD: 1.2	NDPCS	Screening strategy
Bergamaschi, 2009	cross-sectional	Italy	1734	F 1202 M 532	Mean: 43.4 Range: 12- 78	RRMS 1232 SPMS 386 PPMS 116	Mean: 11.9 Range: 1- 52	Mean: 3.3 Range: 0-9	DYMUS	Screening strategy
Bergamaschi, 2008	cross-sectional	Italy	226	F 168 M 58	Mean: 40.5 Range: 21- 71	RRMS 164 SPMS 49 PPMS 13	Mean: 10.1 Range: 1- 29	Mean: 3.1 Range: 1-9	DYMUS	Screening strategy

Barcikova, 2007	cross-sectional	Slovakia	20	NR	NR	NR	NR	Mean: 6.5 Range: 4-8	FEES	Instrumental
Barcikova,2007	cross-sectional	Slovakia	20	NR	NR	NR	NR	Mean: 6.5 Range: 4-8	bed side examination – 50 ml water test	Other
Marti, 2005	cross-sectional	Spain	32	F 24 M 8	Range: 25-69	NR	NR	Mean: 6.1 SD: 4-8.5	VFSS	Instrumental
Peres,2005	cross-sectional	Brazil	31	F 22 M 9	Mean: 42.40 SD: 11.50	NR	NR	Mean: 3.7	clinical evaluation	clinical evaluation
Calcagno, 2002	cross-sectional	Italy	143	F 94 M 49	Mean: 49.95 SD: 10.87	NR	17.03 SD: 9	Mean: 6.8 SD: 1.4	FEES	Instrumental
DePauw,2002	cross-sectional	Belgium	308	F 180 M 128	Mean: 50 Range: 20-84	RRMS: 99 SPMS: 142 PPMS: 67	17	Mean: 6.7	The questionnaire of the Johns Hopkins Swallowing Centre	Other
Klugman,2002	cross-sectional	South Africa	30	F 20 M 10	NR	NR	NR	NR	original questionnaire (self-constructed questionnaire)	Other
Wiesner, 2001	cross-sectional	Switzerland	18	F 9 M 9	Mean: 47 Range: 33-57	NR	NR	Mean: 6.16 Range: 2.5-9	VFSS	Instrumental
Thomas,1999	cross-sectional	UK	79	F 61 M 18	Mean: 44 Range: 17-67	NR	median:1.8 IQR:5.4_17	median: 6 IQR:4_7.5	26-part questionnaire/quantitative swallowing test (150ml water)	Screening strategy
Abraham, 1997	cross-sectional	USA	525	F 385 M 140	Mean: 45.33 11.66	NR	NR	Mean: 5.12 SD:2.46	one page dysphagia screening questionnaire	Screening strategy
Hartelius,1994	cross-sectional	Sweden	191	NR	NR	NR	NR	NR	questionnaire (22 items)	Other

Table 2 Basic characteristics of included studies

Abbreviations:

EDSS: Expanded Disability Status Scale

MS: Multiple Sclerosis

RRMS: Relapsing-Relapsing Multiple Sclerosis

SPMS: Secondary-Progressive Multiple Sclerosis

PPMS: Primary-Progressive Multiple Sclerosis

PRMS: Progressive-Relapsing Multiple Sclerosis

SD: Standard Deviation

IQR: Inter-Quartile Range

Med: Median

F: Female

M: Male

UK: United Kingdom

USA: United States of America

VFSS: Video-Fluoroscopic Swallow Study

EEG: Electroencephalogram

FEES: Fiberoptic Endoscopic Evaluation of Swallowing

EPSS: Electro-Physiological Study of Swallowing

EMG: Electromyography

DYMUS: Dysphagia in Multiple Sclerosis

GUSS: “Gugging Swallowing Screen”

NDPCS: Northwestern Dysphagia Patient Check Sheet

NOTS: Nordic Orofacial Test-Screening

EAT-10: Eating Assessment Tool

ENT-MS-12: Ear, Nose, Throat Multiple sclerosis

MASA: Mann Assessment of Swallowing Ability

Other methods: non-instrumental methods and any method except for instrumental, clinical, and screening strategies

Discussion:

There are a number of studies discussing the prevalence of dysphagia in MS patients. However, all those articles have a number of limitations. For instance, Aghaz et. al. in their article entitled “Prevalence of dysphagia in multiple sclerosis and its related factors: Systematic review and meta-analysis” in 2018, had only reviewed 22 cross-sectional and prospective cohort studies(11) whereas in our study every single article regardless of the study type has been reviewed. Another factor that makes our study stand out is the methodologically rigorous method we had in terms of inclusion criteria. As such, Guan et. al., in a study entitled “Prevalence of dysphagia in multiple sclerosis: A systematic review and meta-analysis” in 2015, claim that around 80% of their analyzed articles had provided an estimate based on self-report screening tests which led to a high level of heterogeneity,(12) while in our study articles with objective and valid methods were included. Our results suggest that 45.3% of MS patients suffer from dysphagia, far higher than that in the general population which is 16-23%. (13)

There are numerous diagnostic methods for dysphagia.(14) In our study we focused on four major methods including instrumental strategies, screening strategies, clinical examinations, and non-instrumental methods. Instrumental methods include video fluoroscopic swallowing examination strategy and fiberoptic endoscopic examination of swallowing strategy. Screening strategies consist of valid and reliable questionnaires designed to screen specifically MS patients for dysphagia, examples of such questionnaires include but are not limited to the Dysphagia in Multiple Sclerosis (DYMUS) questionnaire, the Eating Assessment Tool (EAT-10) questionnaire, the 3-Ounce (90-cc) Water Swallow test, the Dysphagia Screening Questionnaire for MS (DSQMS), and the Northwestern Dysphagia Patient Check Sheet (NDPCS) questionnaire.(8,14–17) Non-instrumental methods are quite uncommon, therefore we coined the term “other methods” to represent studies whose main screening tests were either non-instrumental strategies, or any method other than instrumental, clinical, and screening methods.

Aside from the method that was used to diagnose dysphagia, another important factor in classifying this disease is based on the anatomical location it affects the most. In this manner, dysphagia can be categorized as oropharyngeal, oral, pharyngeal, and

esophageal subtypes. However, as one can assume this classification can loosely encompass all the different manifestations of dysphagia.(18–22) Hence, neurologic dysphagia is diagnosed in a patient when the underlying error that leads to dysphagia is within the neural circuits that orchestrate dysphagia rather than related anatomical structures and functional dysphagia is detected in the absence of any anatomical and neuronal abnormalities that might contribute to difficulty swallowing. (23,24) Another aspect of dysphagia is whether or not the patient experiences different levels of difficulty when swallowing different forms of foods such as liquid or solid.(23,25) The aforementioned subtyping is not common although it provides us with perspective into the vast field and various manifestations of dysphagia.

Literature on the association between MS and dysphagia is rapidly growing and previous studies have mentioned dysphagia as a common symptom of MS based on a number of techniques such as screening strategies, instrumental, non-instrumental, and clinical examinations.(5,16,24,26–29) Many articles also categorize dysphagia based on its severity into 5 classes including slight, alarming, mild, moderate, and severe, whereas others may choose to classify this disorder based on the anatomical location that is primarily affected, such as oral, oropharyngeal, pharyngeal, esophageal, etc. there are also neurogenic and functional types of dysphagia that are due to functional disturbances in the swallowing mechanisms rather than its anatomical structures.(18,23) Dysphagia is also reported to have associations with patients' age, MS type, and disease course. (5)

Dysphagia seems to be strongly connected with the severity of brainstem impairment. Present data reflects the importance of the brainstem in the control of swallowing. The more damage the brainstem sustains, the higher are the chances of developing dysphagia. The aforementioned hypothesis is supported by the role of this critical CNS area in the control of the deglutition mechanism and its neural tract pathways.(25,30) Although the ventromedial reticular formation and the solitary tract nucleus do appear to have a central role in the control of deglutition and its coordination with respiration, the precise location of all the integral parts of the central swallowing pathway has not yet been identified.(3)

Ultimately, we need to focus on the management of dysphagia among MS patients in an effort to prevent its catastrophic side-effects. Two of the of the most common treatment methods include electrical stimulation and the use of botulinum toxin, both of which have shown promise for reducing the swallowing impairment among MS patients. However, there is still argument about whether or not such treatments possess clinical applicability and long-term treatment efficacy and more research is required to enlighten the ambiguity surrounding dysphagia management. (31,32)

The present study has some strengths. First, it is the first methodologically rigorous systematic review and meta-analysis evaluating the prevalence of dysphagia among MS patients with a low risk of publication bias. Second, we managed to categorize the analysis based on different dysphagia diagnostic strategies which has never been done before. However, we had some limitations, too. For example, classifying dysphagia based on its type was not feasible as data was not available in the included articles. Second, we were unable to identify the type of medication that MS patients with dysphagia were receiving. This is an area that might need further

research since it can play a major role in identifying those at risk and help apply preventive measures. Third, based on analyzed articles, compensatory strategies utilized by MS patients such as postural changes, and modification of the amount and speed of food presentation were not identified. Identification of such strategies requires close observation of the feeding abilities of patients and can be helpful for better evaluating MS patients' dysphagia course.

Conclusion:

The results of this systematic review and meta-analysis show that the prevalence of dysphagia in MS patients is significantly higher than the general population. It also provides us with insight into the importance of routine and systemic checkups in MS patients in an effort to prevent the progression of severe comorbidities, especially because dysphagia can lead to aspiration and pneumonia which are both life-threatening in MS patients.

Conflict of interests: None to be declared

Funding: None

References:

1. Mirmosayyeb O, Barzegar M, Nehzat N, Shaygannejad V, Sahraian MA, Ghajarzadeh M. The prevalence of migraine in multiple sclerosis (MS): A systematic review and meta-analysis. *J Clin Neurosci Off J Neurosurg Soc Australas*. 2020 Sep;79:33–8.
2. Mirmosayyeb O, Shaygannejad V, Nehzat N, Mohammadi A, Ghajarzadeh M. Prevalence of seizure/epilepsy in patients with multiple sclerosis: A systematic review and meta-analysis. *Int J Prev Med [Internet]*. 2021 Jan 1;12(1):14. Available from: <https://www.ijpvmjournal.net/article.asp?issn=2008-7802>
3. Barzegar M, Mirmosayeb O, Rezaei M, Bjørklund G, Nehzat N, Afshari-Safavi A, et al. Prevalence and Risk Factors of Dysphagia in Patients with Multiple Sclerosis. *Dysphagia*. 2021 Feb;
4. Covello F, Ruoppolo G, Carissimo C, Zumbo G, Ferrara C, Polimeni A, et al. Multiple sclerosis: Impact on oral hygiene, dysphagia, and quality of life. *Int J Environ Res Public Health*. 2020;17(11):1–9.

5. De Pauw A, Dejaeger E, D'hooghe B, Carton H. Dysphagia in multiple sclerosis. *Clin Neurol Neurosurg.* 2002;104(4):345–51.
6. Tarameshlu M, Azimi AR, Ghelichi L, Ansari NN. Prevalence and predictors of dysphagia in Iranian patients with multiple sclerosis. *Med J Islam Repub Iran.* 2017;31:133.
7. Solaro C, Rezzani C, Trabucco E, Amato MP, Zipoli V, Portaccio E, et al. Prevalence of patient-reported dysphagia in multiple sclerosis patients: An Italian multicenter study (using the DYMUS questionnaire). *J Neurol Sci.* 2013;331(1–2):94–7.
8. Grasso MG, Gamberini G, Patti F, D'Amico E, Bergamaschi R, Berra E, et al. The Dysphagia in Multiple Sclerosis Questionnaire Correlates with Fiber-Optic Endoscopic Examination for Detecting Swallowing Deficits in MS. *Dysphagia [Internet].* 2021;36(2):192–7. Available from: <https://doi.org/10.1007/s00455-020-10119-w>
9. Daly DD, Code CF, Andersen HA. Disturbances of swallowing and esophageal motility in patients with multiple sclerosis. *Neurology.* 1962;12(4):250–6.
10. Ma LL, Wang YY, Yang ZH, Huang D, Weng H, Zeng XT. Methodological quality (risk of bias) assessment tools for primary and secondary medical studies: What are they and which is better? *Mil Med Res.* 2020;7(1):1–11.
11. Aghaz A, Alidad A, Hemmati E, Jadidi H, Ghelichi L. Prevalence of dysphagia in multiple sclerosis and its related factors: Systematic review and meta-analysis. *Iran J Neurol.* 2018 Oct;17(4):180–8.
12. Guan XL, Wang H, Huang HS, Meng L. Prevalence of dysphagia in multiple sclerosis: a systematic review and meta-analysis. *Neurol Sci.* 2015;36(5):671–81.
13. Smithard DG. Dysphagia: A Geriatric Giant? The Normal Swallow. *iMedPub Journals.* 2016;2(1:5):1–7.
14. Nakhostin Ansari N, Tarameshlu M, Ghelichi L. <p>Dysphagia In Multiple Sclerosis Patients: Diagnostic And Evaluation Strategies</p>. *Degener Neurol Neuromuscul Dis.* 2020;Volume 10:15–28.
15. Printza A, Boziki M, Bakirtzis C, Nikolaidis I, Kalaitzi M, Triaridis S, et al. The modified DYMUS questionnaire is a reliable, valid and easy-to-use tool in the assessment of dysphagia in multiple sclerosis. *Eur J Neurol.* 2020;27(7):1231–7.
16. Bergamaschi R, Crivelli P, Rezzani C, Patti F, Solaro C, Rossi P, et al. The DYMUS questionnaire for the assessment of dysphagia in multiple sclerosis. *J Neurol Sci.* 2008;269(1–2):49–53.
17. Sadeghi Z, Afshar M, Ebadi A, Baghban K, Qureshi ZS. Swallowing Disorder in Multiple Sclerosis: Modified Version of the Screening Tool. *J Rehabil.* 2020;21(2):236–55.
18. Alali D, Ballard K, Bogaardt H. The frequency of dysphagia and its impact on adults with multiple sclerosis based on patient-reported questionnaires. *Mult Scler Relat Disord [Internet].* 2018;25:227–31. Available from: <https://doi.org/10.1016/j.msard.2018.08.003>
19. Milewska M, Grabarczyk K, Dąbrowska-Bender M, Jamróz B, Dziewulska D, Staniszewska A, et al. The prevalence and types of oral- and pharyngeal-stage dysphagia in patients with demyelinating diseases based on subjective assessment by the study subjects. *Mult Scler Relat Disord.* 2020;37(October 2019):0–5.

20. Fernandes AMF, Duprat A de C, Eckley CA, da Silva L, Ferreira RB, Tilbery CP. Oropharyngeal dysphagia in patients with multiple sclerosis: Do the disease classification scales reflect dysphagia severity? *Braz J Otorhinolaryngol*. 2013;79(4):460–5.
21. Poorjavad M, Derakhshandeh F, Etemadifar M, Soleymani B, Minagar A, Maghzi AH. Oropharyngeal dysphagia in multiple sclerosis. *Mult Scler*. 2010;16(3):362–5.
22. Gonçalves MLL, França CM, Fragoso YD, Deana AM, de Almeida LM, Bussadori SK. Orofacial evaluation in patients with multiple sclerosis using Nordic Orofacial Test-Screening. *Clin Oral Investig [Internet]*. 2017;21(5):1681–5. Available from: <http://dx.doi.org/10.1007/s00784-016-1952-7>
23. Calcagno P, Ruoppolo G, Grasso MG, De Vincentiis M, Paolucci S. Dysphagia in multiple sclerosis - Prevalence and prognostic factors. *Acta Neurol Scand*. 2002;105(1):40–3.
24. Klugman TM, Ross E. Perceptions of the impact of speech, language, swallowing, and hearing difficulties on quality of life of a group of South African persons with multiple sclerosis. *Folia Phoniatr Logop*. 2002;54(4):201–21.
25. Printza A, Triaridis S, Kalaitzi M, Nikolaidis I, Bakirtzis C, Constantinidis J, et al. Dysphagia Prevalence, Attitudes, and Related Quality of Life in Patients with Multiple Sclerosis. *Dysphagia [Internet]*. 2020;35(4):677–84. Available from: <https://doi.org/10.1007/s00455-019-10075-0>
26. Asadollahpour F, Mehri A, Khatoonabadi A, Mohammadzaheri F, Ebadi A. Validation of the Persian version of the dysphagia in multiple sclerosis questionnaire for the assessment of dysphagia in multiple sclerosis. *J Res Med Sci*. 2019;24(1):99–104.
27. dos Santos VA, de Carvalho Vieira AC, da Silva HJ. Electrical activity of the masseter and supra hyoid muscles during swallowing of patients with multiple sclerosis. *Codas*. 2019;31(6):1–8.
28. Di Stadio A, Ralli M, Altieri M, Brenner MJ, Dipietro L, Messineo D, et al. ENT-MS-12 questionnaire: A novel tool to investigate otolaryngology symptoms in patients with relapsing-remitting multiple sclerosis. Results from a pilot study. *Mult Scler Relat Disord*. 2021;47(October 2020).
29. Johansson K, Schalling E, Hartelius L. Self-Reported Changes in Cognition, Communication and Swallowing in Multiple Sclerosis: Data from the Swedish Multiple Sclerosis Registry and from a National Survey. *Folia Phoniatr Logop*. 2021;73(1):50–62.
30. Williams AE, Vietri JT, Isherwood G, Flor A. Symptoms and Association with Health Outcomes in Relapsing-Remitting Multiple Sclerosis: Results of a US Patient Survey. *Mult Scler Int*. 2014;2014:1–8.
31. Bogaardt H, Alali D, Ballard K. Response to Letter to the Editor Regarding the Article Entitled “Treatment Effects for Dysphagia in Adults with Multiple Sclerosis: A Systematic Review”. *Dysphagia*. United States; 2020.
32. Alali D, Ballard K, Bogaardt H. Treatment Effects for Dysphagia in Adults with Multiple Sclerosis: A Systematic Review. *Dysphagia*. 2016 Oct;31(5):610–8.

Figure legends:

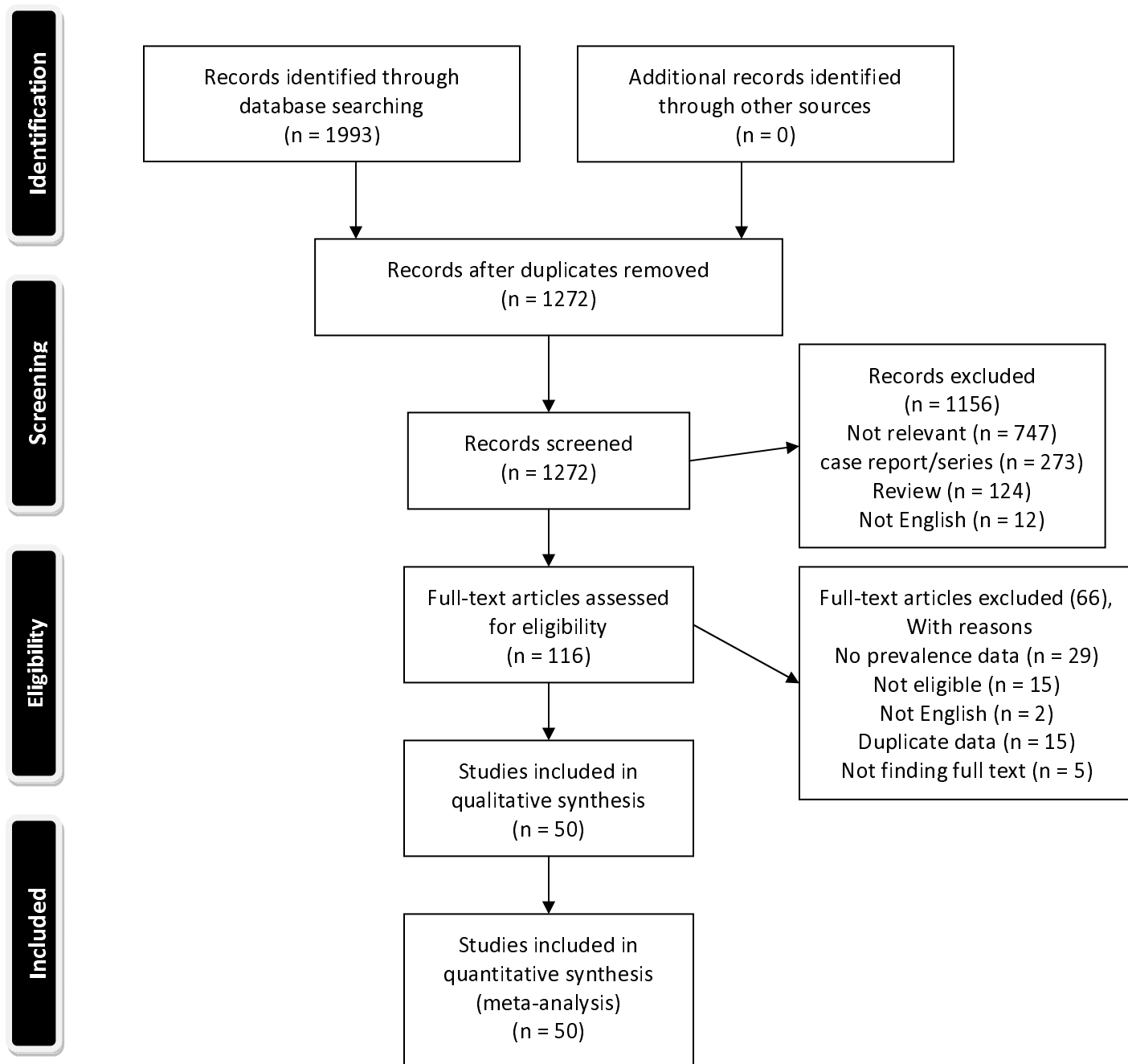
Figure 1 Flow diagram summarizing the selection of eligible studies.

Figure 2 Prevalence of dysphagia based on instrumental strategies.

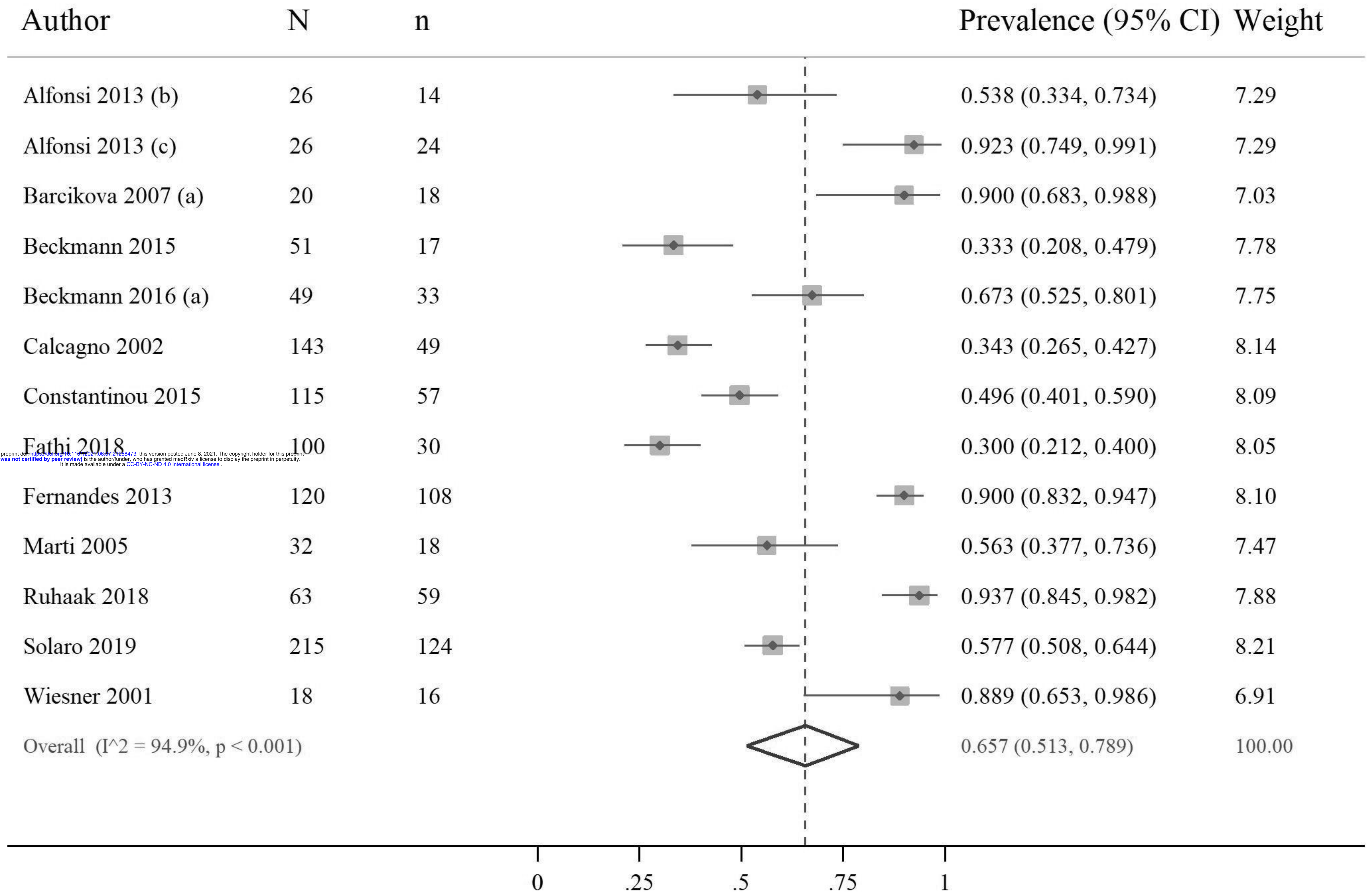
Figure 3 Prevalence of dysphagia based on screening strategies.

Figure 4 Prevalence of dysphagia based on clinical examination strategies.

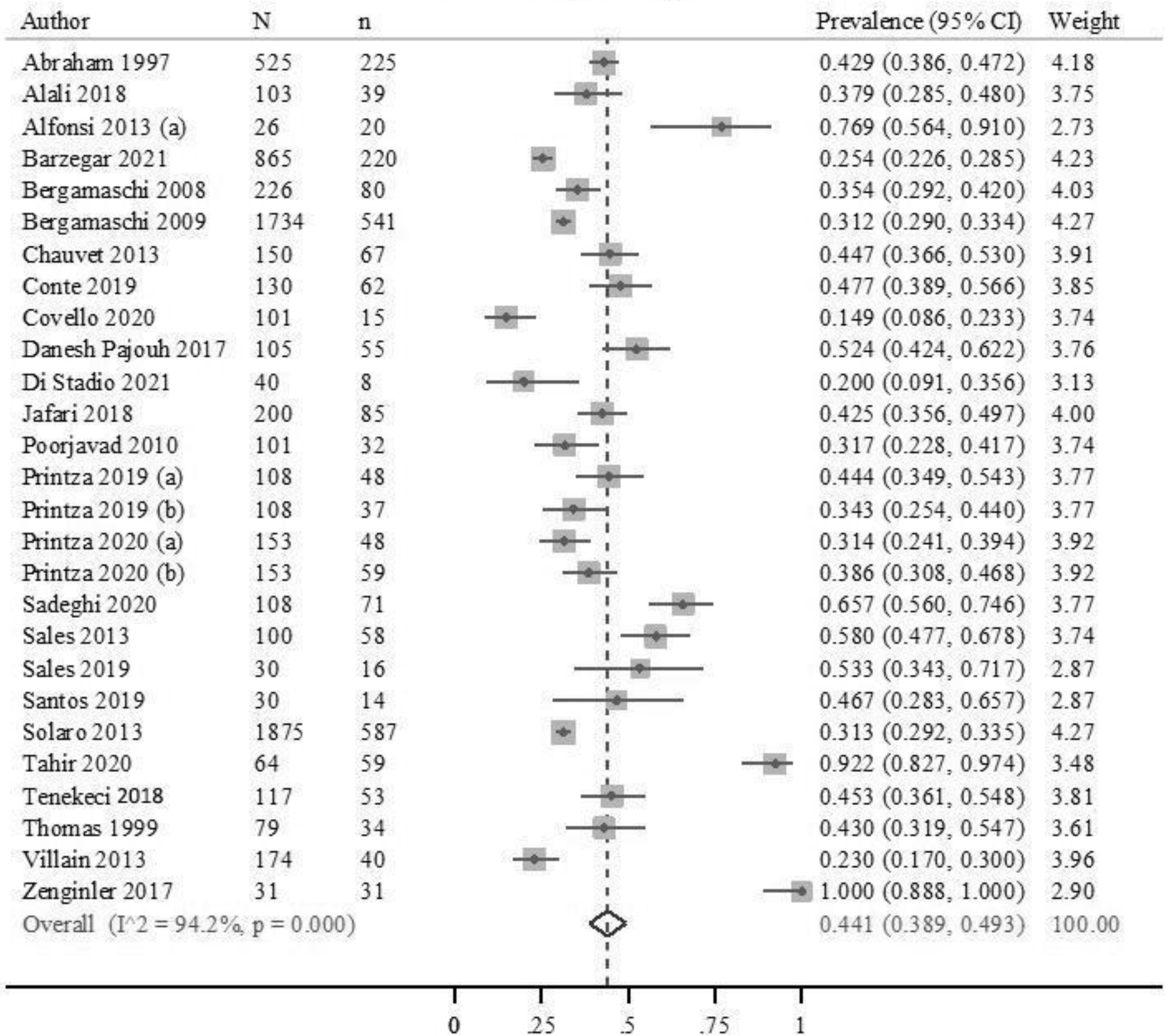
Figure 5 Prevalence of dysphagia based on other strategies, including non-instrumental strategies and any other method except for the instrumental, clinical, and screening strategies.



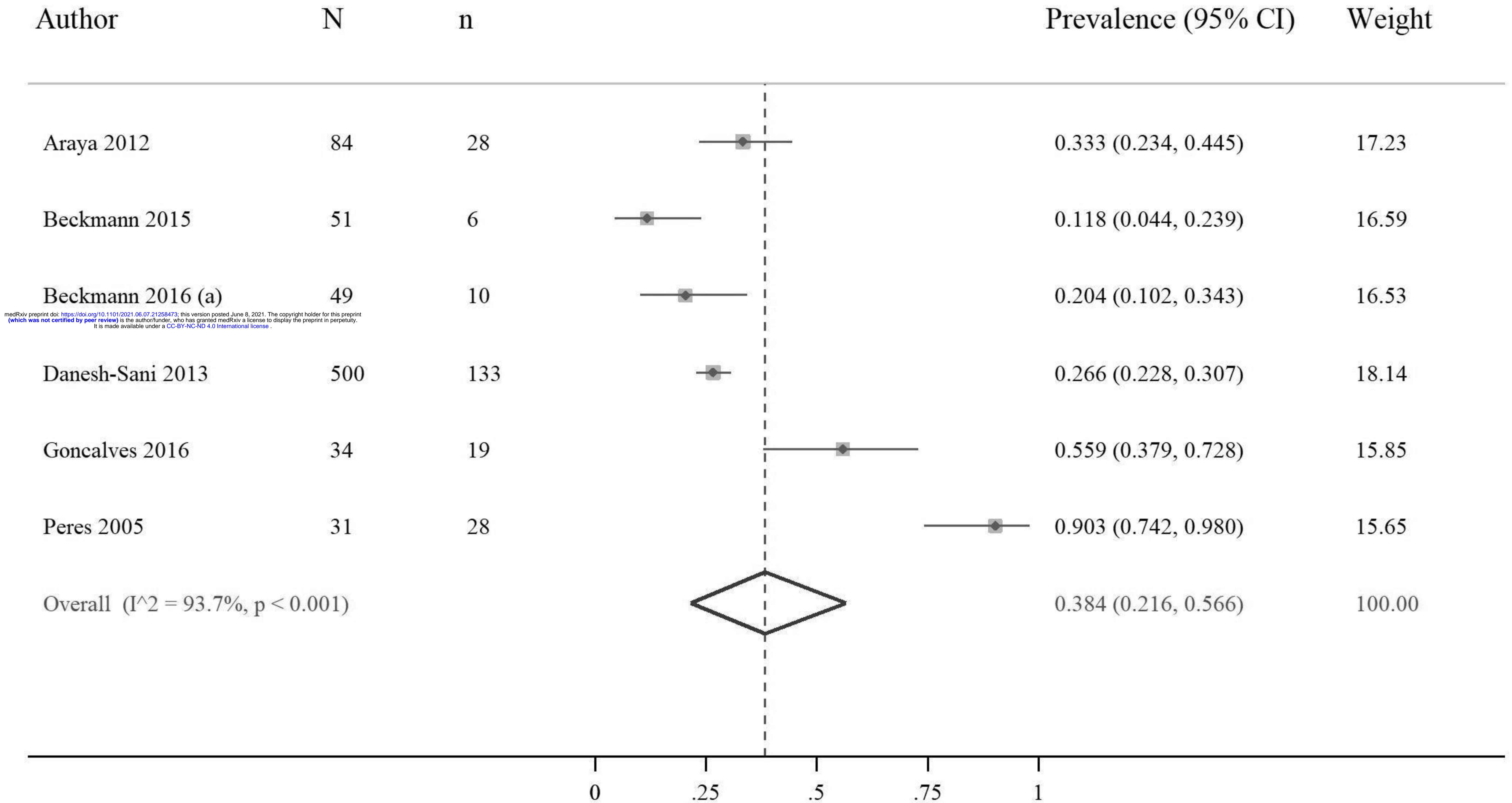
Instrumental strategies



Screening strategies

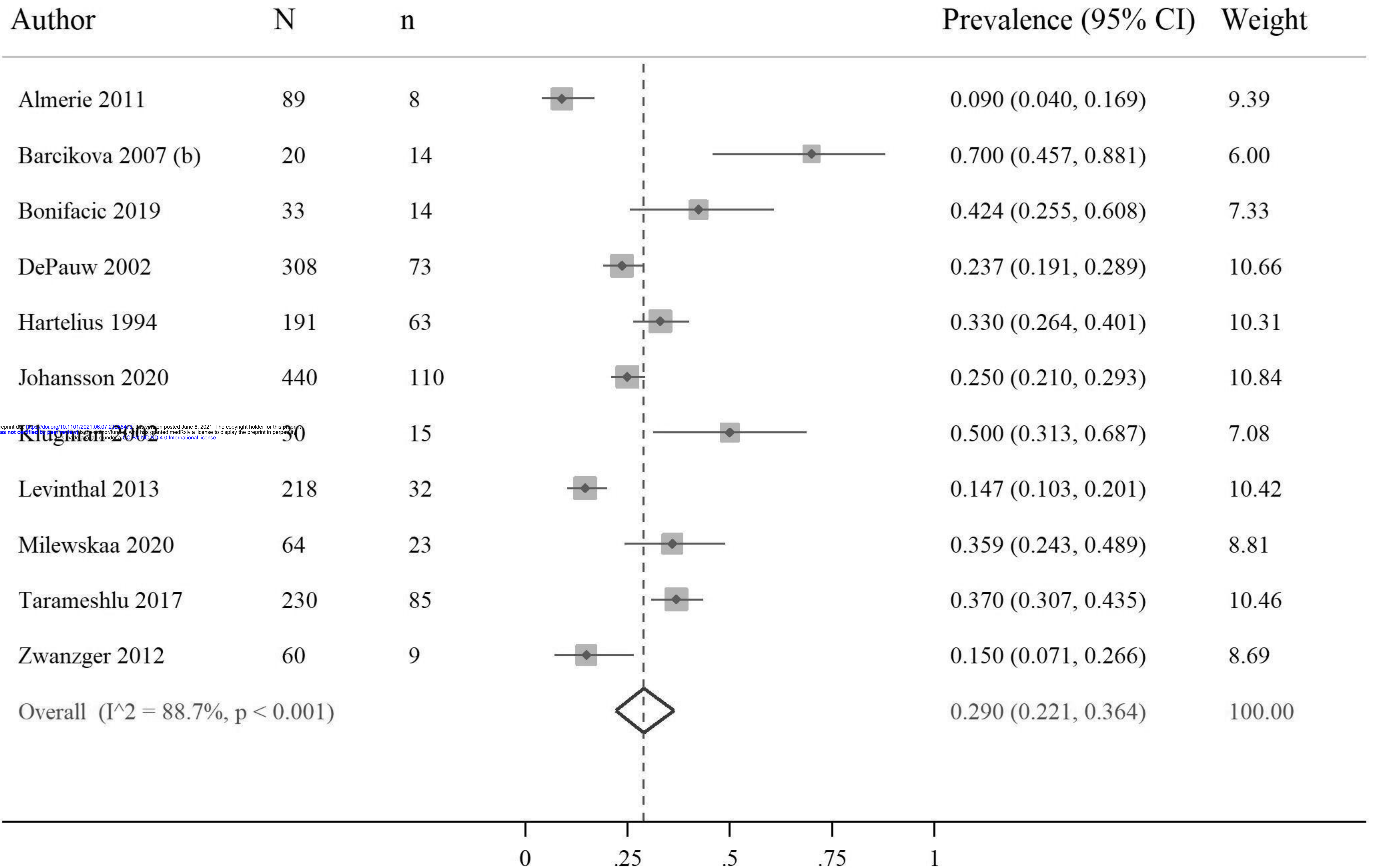


Clinical examination strategies



medRxiv preprint doi: <https://doi.org/10.1101/2021.06.07.21258473>; this version posted June 8, 2021. The copyright holder for this preprint (which was not certified by peer review) is the author/funder, who has granted medRxiv a license to display the preprint in perpetuity. It is made available under a [CC-BY-NC-ND 4.0 International license](https://creativecommons.org/licenses/by-nc-nd/4.0/).

Other strategie



medRxiv preprint doi: <https://doi.org/10.1101/2021.06.07.21258973>; this version posted June 8, 2021. The copyright holder for this preprint (which was not certified by peer review) is the author/funder, who has granted medRxiv a license to display the preprint in perpetuity. It is made available under a CC-BY 4.0 International license.