

1 **Reduced risk of placental parasitaemia associated with complement fixation on**  
2 ***Plasmodium falciparum* by antibodies among pregnant women**

3 D. Herbert Opi<sup>1,2,12\*</sup> Michelle J. Boyle<sup>1,3</sup>, Alistair McLean<sup>1</sup>, Linda Reiling<sup>1</sup>, Jo-Anne  
4 Chan<sup>1,2,12</sup>, Danielle I. Stanisic<sup>4,5</sup>, Alice Ura<sup>4</sup>, Ivo Mueller<sup>6,7,8</sup>, Freya J. Fowkes<sup>1,9,10,11</sup>,  
5 Stephen J. Rogerson<sup>12</sup>, James G. Beeson<sup>1,2,12,13\*</sup>

6

7 1. Burnet Institute, Melbourne, Australia.

8 2. Department of Immunology, Monash University, Melbourne, Australia.

9 3. Human Malaria Immunology Laboratory, QIMR Berghofer Medical Research  
10 Institute, Brisbane, Australia.

11 4. Papua New Guinea Institute of Medical Research, Papua New Guinea.

12 5. Institute for Glycomics, Griffith University, Queensland, Australia.

13 6. Walter and Eliza Hall Institute of Medical Research, Parkville Australia.

14 7. Department of Medical Biology, University of Melbourne, Melbourne, Australia

15 8. Institute Pasteur, Paris, France.

16 9. Department of Infectious Diseases, Monash University, Melbourne, Australia

17 10. Centre for Epidemiology and Biostatistics, University of Melbourne, Melbourne,  
18 Australia.

19 11. Department of Epidemiology and Preventative Medicine, Monash University,  
20 Melbourne, Australia.

21 12. Department of Medicine, at the Doherty Institute, University of Melbourne,  
22 Melbourne, Australia.

23 13. Department of Microbiology, Monash University, Clayton, Australia.

24

25 **\*Correspondence:** James Beeson, Burnet Institute, 85 Commercial Road, Melbourne,  
26 Victoria, 3004, Australia (beeson@burnet.edu.au)

27

28 **\*Alternate corresponding author:** Herbert Opi, Burnet Institute, 85 Commercial  
29 Road, Melbourne, Victoria, 3004, Australia (herbert.opi@burnet.edu.au)

30

31

32 **Key words:** Malaria; pregnancy; complement; antibodies; VAR2CSA.

33 **Running Title:** Complement and malaria in pregnancy

34 **ABSTRACT**

35 **Background:** The pathogenesis of malaria in pregnancy (MiP) involves accumulation  
36 of *P. falciparum*-infected red blood cells (pRBCs) in the placenta, contributing to  
37 poor pregnancy outcomes. Parasite accumulation is primarily mediated by *P.*  
38 *falciparum* erythrocyte membrane 1 (PfEMP1). Magnitude of IgG to pRBCs has been  
39 associated with reduced risk of MiP in some studies, but associations have been  
40 inconsistent. Further, antibody effector mechanisms are poorly understood, and the  
41 role of antibody complement interactions is unknown.

42 **Methods:** Studying a longitudinal cohort of pregnant women (n=302) from a malaria-  
43 endemic province in Papua New Guinea (PNG), we measured the ability of antibodies  
44 to fix and activate complement using placental binding pRBCs and PfEMP1  
45 recombinant domains. We determined antibody-mediated complement inhibition of  
46 pRBC binding to the placental receptor, chondroitin sulfate A (CSA) and associations  
47 with protection against placental parasitaemia.

48 **Results:** Some women acquired antibodies that effectively promoted complement  
49 fixation on placental-binding pRBCs. Complement fixation correlated with IgG1 and  
50 IgG3 antibodies, which dominated the response. There was, however, limited  
51 evidence for membrane attack complex activity or pRBC lysis or killing. Importantly,  
52 a higher magnitude of complement fixing antibodies was prospectively associated  
53 with reduced odds of placental infection at delivery. Using genetically-modified *P.*  
54 *falciparum* and recombinant PfEMP1 domains, we found that complement-fixing  
55 antibodies primarily targeted a specific variant of PfEMP1 (known as VAR2CSA).  
56 Furthermore, complement enhanced the ability of antibodies to inhibit pRBC binding  
57 to CSA, which was primarily mediated by complement C1q protein.

58 **Conclusion:** These findings provide new insights into mechanisms mediating  
59 immunity to MiP and reveal potential new strategies for developing malaria vaccines  
60 that harness antibody-complement interactions.

## 61 INTRODUCTION

62 Malaria in pregnancy (MiP) causes significant maternal, fetal and neonatal mortality  
63 and is a major health issue globally (1). Parasite accumulation in the placenta is a key  
64 feature of MiP following infection with *Plasmodium falciparum* (2, 3) but is not  
65 prominent with other human infecting *Plasmodium* species. This largely results from  
66 the selective binding of pRBCs to chondroitin sulfate A (CSA) expressed on  
67 syncytiotrophoblasts (4, 5), and other binding interactions may play secondary roles  
68 (6, 7). This is mediated by a *Plasmodium falciparum* erythrocyte membrane protein 1  
69 (PfEMP1) variant surface antigen, VAR2CSA, encoded by the *var* multigene family  
70 (5, 8). The risk of MiP is greatest in primigravid women, and generally decreases with  
71 successive pregnancies in malaria endemic areas due in part to the acquisition of  
72 protective antibodies directed against placental-binding *P. falciparum* infected red  
73 blood cells (pRBCs)(9). Antibodies to placental-binding pRBCs and VAR2CSA have  
74 been associated with improved outcomes in some studies, although associations have  
75 not been entirely consistent (10). How antibodies to pRBCs and VAR2CSA function  
76 in protective immunity to MiP and improved birth outcomes is not fully understood  
77 (10), and these key knowledge gaps, are restricting advancement of MiP vaccines.  
78 Existing data shows that antibodies may act via inhibition of placental adhesion of  
79 pRBCs (11) and promoting phagocytosis of pRBCs (12). However, a recent  
80 systematic review found that data on associations between these antibody functions  
81 and protection from the consequences of MiP are limited and variable (10) and data  
82 suggest these mechanisms may not fully explain immunity to MiP. VAR2CSA is a  
83 leading vaccine candidate for MiP with two VAR2CSA based vaccines having  
84 completed phase I trials (13, 14), which highlights the importance of a strong  
85 understanding of immunity to inform further vaccine design and development for  
86 MiP.

87         Antibodies to placental-binding pRBCs and VAR2CSA are dominated by  
88 IgG1 and IgG3 subclasses (15, 16), which have the potential to fix and activate human  
89 complement against infecting pathogens (17). Complement activation via the classical  
90 pathway is initiated by binding of complement C1q to antigen-antibody complexes.  
91 This leads to a cascade of activation of other complement components including C3  
92 and culminates in the formation of the C5-9 membrane attack complex (MAC)(18).  
93 Complement fixation can mediate protective functions through several mechanisms: i)  
94 MAC formation can lead to cell lysis or death, ii) complement components C3 and C5

95 can promote phagocytosis by monocytes and neutrophils through interactions with  
96 complement receptors expressed on those cells, iii) binding of complement  
97 components to a pathogen surface may also have direct inhibitory or neutralizing  
98 activity (18-20). Antibody-mediated complement fixation against *P. falciparum* has  
99 been implicated in immunity in non-pregnant individuals, targeting merozoites (21,  
100 22), sporozoites (23, 24) and gametocytes (25). While there is a potential role for  
101 antibody-mediated complement fixation in immunity against MiP, this has not been  
102 established and RBCs are known to express complement regulatory proteins that can  
103 inhibit complement activation and confer resistance to lysis (26). Older studies have  
104 reported antibody-mediated complement fixation on the surface of mature pigmented  
105 trophozoite stage pRBCs, but these did not assess different functional activities or  
106 associations with protection (26, 27). Further, MiP has also been associated with  
107 excessive complement activation and production of inflammatory products mediating  
108 adverse outcomes (28). Therefore, the role of complement fixation in preventing or  
109 reducing placental infection remains unclear, and there has been little investigation of  
110 its potential role in immunity.

111 We hypothesised that acquired antibodies against VAR2CSA in some  
112 pregnant women may fix complement on placental binding pRBCs, which may  
113 contribute to the control or prevention of placental parasitaemia. Using a prospective  
114 longitudinal cohort study of malaria-exposed pregnant women from PNG, we  
115 investigated antibody-complement interactions in immunity to MiP. We investigated  
116 antigenic targets of complement fixation on the surface of pRBCs using genetically-  
117 modified pRBCs and recombinant VAR2CSA proteins, and evaluated functional  
118 mechanisms of complement-fixing antibodies. We examined whether antibody-  
119 mediated complement fixation on pRBCs is associated with reduced risk of placental  
120 infection.

## 121 MATERIALS AND METHODS

### 122 Study population

123 This study was part of a larger prospective longitudinal cohort study looking at the  
124 risk factors for malaria and adverse birth outcomes among pregnant women, described  
125 elsewhere (29). The study was carried out in the malaria-endemic province of Madang  
126 in Papua New Guinea (PNG), September 2005 to October 2007. 470 pregnant women  
127 >16 years of age attending their first antenatal care visit at the Alexishafen Health  
128 Centre were recruited into the study following informed voluntary consent. Women  
129 were followed up at 30-34 weeks gestation and at delivery. At enrolment, women  
130 received chloroquine (9 or 12 tablets, 150 mg base) and (when available)  
131 sulphadoxine pyrimethamine (500/25 mg, three tablets), followed by weekly  
132 chloroquine prophylaxis (two 150 mg tablets weekly), and ferrous sulphate 270 mg  
133 and folic acid 0.3 mg daily, according to local guidelines. Adherence to prophylaxis  
134 was, however, not monitored. Inclusion criteria included no history of multiple births  
135 (for example past delivery of twins) and delivery complications, intention to deliver at  
136 the Alexishafen Health Centre, haemoglobin (Hb) >5g/dl and evidence of fetal  
137 movement. This study is restricted to 302 women with paired data available for  
138 enrolment and delivery visits. During each visit, clinical and demographic data were  
139 recorded. Peripheral blood samples were collected at each visit and plasma and serum  
140 samples separated and frozen. Placental blood and placental biopsy samples were  
141 collected at delivery if the delivery occurred at the clinic (n=233). At each visit,  
142 peripheral parasitaemia was determined by microscopy on thick and thin blood films  
143 and *Plasmodium spp* infection confirmed by PCR (29). Placental infection was  
144 determined by histology on fixed Giemsa-stained placental sections by light  
145 microscopy and was classified as no-infection, past infection, chronic infection or  
146 active infection as previously described (30, 31). The human genetic polymorphisms  
147 of South-East Asian Ovalocytosis (SAO), Complement Receptor 1 (CR1) and  
148  $\alpha$ -thalassaemia are common in this population and have been associated with  
149 protection against severe clinical malaria in some studies ((32, 33)). Therefore, these  
150 were included as possible confounders in our study. Molecular typing was conducted  
151 as previously described (34). Samples from malaria non-exposed residents of  
152 Melbourne, Australia were used as negative controls in all assays.

153

154

## 155 **Parasite culture**

156 For all assays, CS2 *P. falciparum* parasite strain was used. CS2 binds to CSA and  
157 predominantly expresses the *var* gene *var2csa* (4, 35). Assays on the role of PfEMP1  
158 included a transgenic CS2 *P. falciparum* isolate in which the genetic deletion of the  
159 PfEMP1 trafficking protein skeleton-binding protein 1, SBP1 knock-out (CS2-  
160 SBP1KO), significantly impairs PfEMP1 RBC surface expression (36). Additional  
161 experiments were carried out using the XIE *P. falciparum* isolate that originated from  
162 a pregnant PNG woman (37). XIE *P. falciparum* was adapted to *in vitro* culture and  
163 selected for adhesion to immobilized CSA giving rise to the XIE-CSA isolate that  
164 expresses *var2csa* as the dominant transcript (37). Parasites were cultured in human  
165 blood group O RBCs and RPMI-HEPES medium (Thermo Fisher Scientific)  
166 supplemented with 5% heat-inactivated human serum (vol/vol) from a pool of malaria  
167 non-exposed Australian Red Cross donors and 0.25% AlbuMAX™ II (Thermo Fisher  
168 Scientific) (vol/vol), NaHCO<sub>3</sub> and gentamicin (complete culture medium). The  
169 parasites were then maintained in a gas mixture of 1% O<sub>2</sub>, 4% CO<sub>2</sub> and 95% N<sub>2</sub> at  
170 37°C. Knobby pRBCs were selected for and maintained by regular flotation in 0.75%  
171 gelatin in RPMI-HEPES.

172

## 173 **Adhesion inhibition assays**

174 The ability of immune antibodies in the presence or absence of complement to inhibit  
175 pRBC adhesion to CSA was assessed using a modified version of a static-based  
176 binding assay described previously (38). Petri dishes were coated with 2.5µg/ml of  
177 CSA diluted in PBS and incubated overnight at 4°C. Plates were subsequently  
178 blocked with 1% bovine serum albumin (BSA) in PBS followed by gentle washing.  
179 Mature pigmented-trophozoite stage CS2 pRBCs at approximately 3% parasitaemia  
180 and 1% haematocrit, in RPMI, were opsonized with a pool of antibodies of serum  
181 samples from either PNG pregnant women (N=9) with high IgG reactivity to  
182 VAR2CSA-DBL5 (3D7) as determined by ELISA or malaria non-exposed Australian  
183 donors (N=10). The pooled samples were tested in assays at a final concentration of  
184 10% in RPMI-HEPES. Additionally, to test for complement fixation, samples were  
185 concurrently incubated with normal serum (NS; complement active) or heat  
186 inactivated serum (HIS; complement inactive) at a final dilution of 25% in RPMI,  
187 10µg/ml purified human C1q (Millipore) or C1q-depleted human serum (Millipore) at  
188 a final dilution of 10% in RPMI, or RPMI (negative control) for 30 minutes at 37°C at



189 a final volume of 50 $\mu$ l. Both NS and HIS were from malaria non-exposed Australian  
190 donors. The parasite suspension was then added onto the CSA coated spots and  
191 incubated at 37°C for a further 15 minutes. Unbound cells were washed off with  
192 gentle agitation and bound pRBCs were fixed in 2% glutaraldehyde in PBS followed  
193 by staining with 10% Giemsa. Each sample was tested in duplicate spots and repeated  
194 in 3-6 independent assays. Images of adherent pRBCs were captured using an  
195 inverted microscope with 8 images captured for each of the duplicate spots for each  
196 protein. Adherent pRBCs were counted and the results expressed as the mean number  
197 of pRBCs bound per mm<sup>2</sup>.

198

### 199 **Recombinant proteins**

200 For ELISA-based assays, antibody levels were determined for 3 VAR2CSA  
201 recombinant proteins representing 2 allelic variants; DBL5 (3D7), DBL3 (7G8) and  
202 DBL5 (7G8). All recombinant proteins were cloned and produced in *Pichia pastoris*  
203 (39). DBL5 and DBL3 recombinant proteins were selected because compared to other  
204 VAR2CSA domains they are highly immunogenic in natural infections and elicit  
205 some degree of cross-reactive and adhesion-blocking antibodies (8, 40-44), and also  
206 promote opsonic phagocytosis by monocytes (45).

207

208 **Plate-based complement fixation assays with recombinant proteins:** 96-well  
209 plates were coated with 1 $\mu$ g/ml of VAR2CSA-DBL5 (3D7) or VAR2CSA-DBL3  
210 (7G8) recombinant proteins and incubated at 4°C overnight. Plates were then blocked  
211 with 2% casein in PBS at 37°C for 2 hours and then incubated with antibodies at a  
212 dilution of 1/100 followed by purified C1q (Millipore) at 10 $\mu$ g/ml or C5-depleted  
213 serum (Millipore) at a dilution of 1/10 for the detection of C3, at room temperature for  
214 1 hour. A combination of goat anti-C1q plus HRP-conjugated rabbit anti-goat  
215 antibodies and rabbit anti-C3 plus HRP-conjugated goat anti-rabbit at dilutions of  
216 1/2000 were used for the detection of C1q and C3 respectively. Reactivity was  
217 determined by measuring the optical density (OD) at 405nm following the addition of  
218 ABTS (2,2'-azino-bis(3-ethylbenzothiazoline-6-sulfonic acid)) and stopping of the  
219 reaction with 1% sodium dodecyl sulfate (SDS) after 15 minutes to 1 hour. Blank  
220 wells, without antibodies added, were used to subtract non-specific signal from each  
221 well. IgG to VAR2CSA was measured using goat anti-human IgG-HRP (Millipore)  
222 while IgG subclasses to VAR2CSA were measured using sheep anti-human IgG1,

223 IgG2, IgG3, IgG4 (HRP) antibodies (Binding site). Optical density (OD) results for  
224 each assay plate were then standardized to account for plate-to-plate variation by  
225 using values from five PNG positive control serum samples that were included on  
226 every plate. The positive control samples were from individuals identified as having  
227 high IgG reactivity to VAR2CSA by ELISA during assay optimisation. Seropositive  
228 samples were classified as having an OD greater than the mean + 3 standard  
229 deviations of malaria non-exposed Australian donors (n=15).

230

231 **Flow cytometry complement fixation assays with intact pRBCs:** Pigmented  
232 trophozoite stage parasites at ~10% parasitaemia and 0.5% haematocrit were  
233 incubated with 25% NS and 10% antibodies from PNG pregnant women or Australian  
234 malaria non-exposed donors for 1 hour at 37°C. pRBCs were then washed in 0.5%  
235 BSA in PBS and C1q, C3 and C5-9 detected by staining with polyclonal rabbit anti-  
236 human C1q, goat anti-human C3 or monoclonal mouse anti-human C5-9 antibodies  
237 followed by respective polyclonal Alexa-488 conjugated goat anti-rabbit, rabbit anti-  
238 goat or goat anti-mouse antibodies. pRBCs were detected by staining with ethidium  
239 bromide (Bio-Rad) at 1/1000 dilution. Levels of complement fixation on pRBCs were  
240 expressed as the Alexa-488 geometric mean fluorescent intensity of ethidium bromide  
241 stained pRBC populations. It is reported that aged RBCs can bind complement factors  
242 (46), and in assay work-up we found it was important to use fresh (recently collected)  
243 RBCs in assays. To prepare parasites for these assays, mature-pigmented trophozoites  
244 were purified by magnet filtration, mixed with fresh RBCs, and cultured for 48 hours  
245 to obtain a parasitaemia of ~10% parasitaemia.

246

247 **Detection of complement fixation on pRBC surface by western blot:** Magnet-  
248 purified pigmented trophozoite pRBCs (>95% purity) were incubated with a 10%  
249 pool of antibodies (N=9) from PNG pregnant women with high IgG reactivity to  
250 VAR2CSA-DBL5 (3D7) or a pool of antibodies (N=10) from malaria non-exposed  
251 Australian donors, and 25% NS as a source of complement, for 15 minutes at 37°C.  
252 pRBCs were then washed in cold PBS containing protease inhibitors. Samples were  
253 resuspended in reducing SDS sample buffer, heated at 95°C for 5 minutes and  
254 proteins separated on 4%-12% Bis-Tris gels (Invitrogen). Proteins were then  
255 transferred to nitrocellulose membranes (Invitrogen). C1q (29 Kd) was detected by  
256 staining with a rabbit anti-C1q antibody. C3b was detected using an anti-C3 antibody



257 that labels both C3b and iC3b components that comigrate at ~68kDa (21). Labelling  
258 of heat shock protein 70 (HSP-70) was used as a loading control.

259

### 260 **Assessment of complement-mediated killing of pRBCs**

261 Mature pigmented trophozoite stage CS2 parasites at 0.5% parasitaemia and 3%  
262 haematocrit were cultured in complete medium in 96 well plates in the presence of  
263 10% antibodies from PNG pregnant women (N=7) alone or with additional 25% NS  
264 or HIS. A negative control with no PNG or Australian malaria non-exposed donor  
265 antibodies and no NS or HIS added was also included in the assay. After  
266 approximately 24 hours incubation when parasites were at ring stages, samples were  
267 washed three times in RPMI to remove complement and antibodies and then returned  
268 to culture at 3% haematocrit in complete culture medium for a further 24 hours until  
269 parasites reached the mature pigmented trophozoite stage. Parasitaemia was measured  
270 by flow cytometry following staining with ethidium bromide at 1/1000 dilution. All  
271 samples were run blinded in triplicate and in 3 separate experiments.

272

### 273 **Statistical analyses**

274 Statistical analyses were performed using STATA v13.1. Graphs were generated  
275 using GraphPad Prism v7. Continuous variables were compared using non-parametric  
276 Mann-Whitney U test or Wilcoxon matched-pairs signed rank tests. Correlations  
277 between continuous variables were assessed using Spearman's rank correlation  
278 coefficient ( $\rho$ ). The association between antibody-mediated complement fixation  
279 and placental infection was tested using logistic regression with levels of complement  
280 fixing antibodies fitted as continuous variables. To aid interpretation, coefficients  
281 were presented representing the difference in outcome of a high responder (75<sup>th</sup>  
282 percentile) or a medium responder (50<sup>th</sup> percentile) compared to a low responder (25<sup>th</sup>  
283 percentile). The model was adjusted for gravidity (primigravid/multigravid), location  
284 of residence (town/village), smoking (no/yes), middle upper arm circumference (as a  
285 marker of undernutrition in pregnancy), sex of newborn, haemoglobin levels at  
286 enrolment, South East Asian Ovalocytosis and  $\alpha$ -thalassaemia (wild type vs  
287 heterozygous or homozygous). We tested for evidence of effect modification by *P.*  
288 *falciparum* peripheral infection at enrolment or gravidity on birth outcomes using log-  
289 likelihood ratio tests, with and without an interaction term. For all analysis P values  
290 less than 0.05 were considered statistically significant.

## 291 RESULTS

### 292 Antibodies from pregnant women promote complement fixation on placental 293 binding pRBCs

294 We tested whether acquired antibodies from pregnant women from a malaria endemic  
295 PNG region could fix and activate complement on pRBCs. Trophozoite stage pRBCs  
296 of the placental binding *P. falciparum* isolate CS2 were opsonized with antibodies  
297 from 302 PNG women or 15 malaria non-exposed Australian donors and tested for  
298 their ability to fix complement factors C1q or C3 by flow cytometry. Antibodies from  
299 malaria-exposed pregnant PNG women mediated significantly higher levels of  
300 complement C1q (Figure 1A) and C3 (Figure 1B) fixation to the surface of CS2  
301 pRBCs, compared to malaria non-exposed control donors (both  $P<0.001$ )  
302 (characteristics of the 302 women included in this study data are shown in Table 1).  
303 The prevalence of complement-fixing antibodies among pregnant women was 66%  
304 (200/302) for C1q and 51% (155/302) for C3 (Figure 1A-B). C1q fixation on pRBCs  
305 was moderately positively correlated with C3 fixation on pRBCs (Spearman  $r=0.36$ ,  
306  $P<0.001$ ). C3 fixation was abolished when using heat-inactivated serum (HIS)  
307 (complement inactive) as a control, compared to normal serum (NS) (complement  
308 active) ( $P<0.001$ ) (Figure 1C). C1q fixation on the surface of pRBCs was confirmed  
309 by Western blot in the presence of antibodies from PNG pregnant women compared  
310 to malaria non-exposed antibody pool (Figure 1D). Some C3 fixation on pRBCs was  
311 detected when using malaria non-exposed antibodies or unopsonized controls, but  
312 levels were much lower than those seen with the PNG antibodies pool (Figure 1D). A  
313 subset of samples was tested for complement fixation using an isolate from PNG  
314 (XIE), which is genetically distinct from CS2 (47). There was significantly higher C3  
315 fixation among PNG pregnant women's samples ( $N=35$ ) compared to non-exposed  
316 controls ( $N=10$ ) ( $P<0.001$ ) (Supplementary Figure S1). Correlation between CS2 and  
317 XIE was 0.44,  $p=0.012$ .

318

### 319 Antibodies to placental binding parasites show limited MAC formation and 320 activity

321 Using antibodies from a subset of women (selected on the basis of showing moderate  
322 to high C1q fixation (Supplementary Figure S2A-B)) we tested for evidence of C5-9  
323 fixation and MAC activity on the surface of CS2 PRBCs. We observed no evidence of

324 elevated C5-9 fixation on pRBCs by flow cytometry when these PNG antibodies were  
325 used to opsonize pRBCs in the presence of normal serum (Figure 2A). Additionally,  
326 we did not observe any significant correlation between C5-9 fixation and C1q or C3  
327 fixation on the surface of CS2 pRBCs (Figure 2B). To assess whether there was  
328 significant MAC activity leading to pRBC lysis or impacting on pRBC viability, we  
329 tested whether incubation of CS2 pRBCs in the presence of PNG women's antibodies  
330 (N=7) with active complement (NS) compared to heat-inactivated serum (inactive  
331 complement) impacted parasite replication *in vitro*. There was no evidence of reduced  
332 *in vitro* growth of pRBCs that were exposed to antibodies and active complement  
333 (Figure 2C). Therefore, these data suggest that while there is fixation of C1q and  
334 activation of C3 on the surface of pRBCs, there is limited formation of MAC or  
335 complement-mediated lysis of pRBCs.

336

### 337 **PfEMP1 is a major target of complement fixing antibodies**

338 PfEMP1 has been implicated as a major antigen on the surface of pRBCs (48).  
339 Therefore, we quantified its significance as a target of complement fixing antibodies.  
340 We first established that antibody samples from PNG pregnant women fixed C1q on  
341 recombinant VAR2CSA DBL5 (Figure 3A) and DBL3 domains (Figure 3B) at  
342 significantly higher levels compared to malaria non-exposed donors (both  $P < 0.001$ );  
343 57% (171/302) and 56% (170/302) of PNG samples were classified as positive for  
344 C1q fixation against DBL5 and DBL3 respectively. C1q fixation on DBL5 and DBL3  
345 were moderately correlated with each other (Spearman  $r = 0.63$ ,  $P < 0.001$ ) and with  
346 C1q fixation on pRBCs (Spearman  $r = 0.54$  and  $r = 0.50$  respectively,  $P < 0.001$ ). C3  
347 fixation on DBL5, tested for a subset of 35 randomly selected PNG antibody samples,  
348 was also significantly higher compared to malaria non-exposed donor samples ( $n = 10$ )  
349 ( $P < 0.001$ ) (Figure 3C) and strongly correlated with C1q fixation (Spearman  $r = 0.89$ ,  
350  $P < 0.001$ ) (Figure 3D). C3 fixation on DBL5 versus pRBCs were moderately  
351 correlated (Spearman  $r = 0.48$ ,  $P = 0.003$ ). Using a subset of 35 randomly selected PNG  
352 samples and 10 Australian malaria non-exposed donor samples, we confirmed that  
353 acquired antibodies fixed complement to a different allele of VAR2CSA, DBL5  
354 domain (7G8) (Supplementary Figure S3). The correlation between complement C3  
355 fixation to the 2 different alleles DBL5 (3D7) and DBL5 (7G8) was 0.61,  $p < 0.001$ .

356 We next evaluated antibody-mediated complement fixation on the pRBC  
357 surface using a CS2 *P. falciparum* isolate that was genetically-modified to reduce

358 PfEMP1 surface expression; CS2 skeleton-binding protein 1 knockout (CS2-  
359 SBP1KO) (49). We found that C1q (Figure 3E) and C3 (Figure 3F) fixation were  
360 greatly reduced on the surface of CS2-SBP1KO pRBCs compared to CS2-parental  
361 pRBCs ( $P=0.016$ ), indicating PfEMP1 as the major target of antibodies. Median C1q  
362 (Figure 3E) and C3 (Figure 3F) fixation was 76% and 53% lower, respectively, with  
363 CS2-SBP1KO pRBCs compared to CS2-parental pRBCs.

364 C1q fixation on VAR2CSA strongly correlated with IgG binding to both  
365 domains (DBL5; Spearman's  $r=0.76$ ,  $P<0.001$ , DBL3; Spearman's  $r=0.75$ ,  $P<0.001$ )  
366 in the PNG cohort (Table 2). VAR2CSA IgG subclass responses, tested on the  
367 random selection of 35 PNG samples, were predominantly IgG1 (80%  
368 seroprevalence) and IgG3 (37.1% seroprevalence) (Supplementary Figure S4) and  
369 moderately correlated with C1q fixation on DBL5 and DBL3 (Table 2).

370

### 371 **Antibody-mediated complement fixation is associated with gravidity and** 372 **infection status and protection against placental infection**

373 We found significantly higher C1q (Figure 4A;  $P<0.001$ ) and C3 (Figure 4B;  
374  $P=0.009$ ) fixation on CS2 pRBCs among multigravid compared to primigravid  
375 women (Supplementary Figure S5A-B). Additionally, active peripheral *P. falciparum*  
376 infection at study enrolment was associated with higher complement C1q fixation on  
377 DBL5 (Figure 4G;  $P<0.001$ ) and DBL3 domains (Figure 4H;  $P<0.001$ ) compared to  
378 no infection at study enrolment (Supplementary Figure S5C-D).

379 We tested for associations between antibody-mediated complement fixation and  
380 protection from placental malaria infection using logistic regression analysis. We  
381 tested the hypothesis that when a pregnant woman is infected with *P. falciparum*,  
382 those who generate higher levels of complement-fixing antibodies may be less likely  
383 to develop placental parasitemia, compared to those with low complement-fixing  
384 antibodies. Among women with *P. falciparum* infection at enrolment (median  
385 gestation 26 weeks; Table 1), those with high and intermediate levels of complement-  
386 fixing antibodies had significantly lower risk of placental infection when compared to  
387 those with low complement fixing antibodies (Figure 5A) (Table S1). Protective  
388 associations were observed with C1q or C3 fixation on placental-binding pRBCs, or  
389 recombinant VAR2CSA-DBL5 domain; associations were weaker for C1q-fixation on  
390 the DBL3 domain. Further analysis of placental malaria stratified by placental  
391 histology confirmed a reduced risk of acute and chronic placental infection with high

392 and intermediate levels of complement-fixing antibodies (Tables S2 & S3). However,  
393 it is important to note that statistical power is reduced in these sub-group analyses.  
394 Among women who were not parasitemic at enrolment, there was no significant  
395 association between antibody complement fixation on pRBCs (C1q or C3) and risk of  
396 placental infection.

397

398 **Antibody-mediated complement fixation enhances inhibition of pRBC adhesion**  
399 **to the placental receptor CSA**

400 Complement-fixation on cell surfaces is known to enhance phagocytic clearance  
401 through interactions of C3b and C4b with numerous complement receptors expressed  
402 on cells such as monocytes and neutrophils (19). We investigated whether fixation of  
403 complement on pRBCs by antibodies might have an additional function of enhancing  
404 inhibition of pRBC binding to CSA. Using a pool of antibodies from pregnant PNG  
405 women, we found that antibodies, under all conditions, gave significant inhibition of  
406 binding of CS2 pRBCs to CSA compared to malaria non-exposed antibodies (Figure  
407 5B) ( $P < 0.05$ ). In the presence of complement (NS), PNG antibodies significantly  
408 reduced binding of CS2 pRBCs to CSA (median binding 47 pRBCs/mm<sup>2</sup>,  $P = 0.004$ )  
409 compared to PNG antibodies alone (166 pRBCs/mm<sup>2</sup>); reduction of 72% (Figure 5B).  
410 Since C1q is the first step in classical complement activation by antibodies, we  
411 evaluated C1q-depleted serum as a control, finding that PNG antibodies plus C1q-  
412 depleted serum had similar levels of binding to PNG antibodies alone (171  
413 pRBCs/mm<sup>2</sup>,  $P > 1.000$ ), and significantly less inhibition than PNG antibodies with  
414 NS. Importantly, PNG antibodies, in the presence of human C1q only (not including  
415 other complement components) resulted in similar levels of binding inhibition as seen  
416 with whole serum (Figure 5B) (60 pRBCs/mm<sup>2</sup>,  $P = 0.004$ ). These findings suggest  
417 C1q is the major factor important in enhancing binding inhibition by antibodies  
418 (Figure 5B).

## 419 DISCUSSION

420 Antibodies are thought to mediate protection against placental infection by *P.*  
421 *falciparum*. However, the mechanisms mediating immunity are not fully understood.  
422 Here, we reveal a new mechanism in immunity to malaria in pregnancy, which may  
423 contribute to reducing the risk of placental parasitemia. We show that acquired  
424 antibodies among pregnant women can mediate complement fixation on placental-  
425 binding *P. falciparum* pRBCs. Using genetically-modified *P. falciparum* pRBCs and  
426 recombinant antigens, we found that antibody-mediated complement-fixation  
427 predominantly targeted PfEMP1 (VAR2CSA) expressed on the surface of pRBCs.  
428 Importantly, higher complement-fixing antibodies were associated with a reduced risk  
429 of placental parasitaemia and resulted in enhanced inhibition of pRBC binding to  
430 CSA suggesting this mechanism contributes to immunity to MiP.

431 We demonstrated the ability of acquired antibodies to fix and activate  
432 complement using several approaches. Antibodies could fix C1q, the first step in the  
433 classical pathway and C3, indicating complement activation. This was demonstrated  
434 by labelling complement components on pRBCs by flow cytometry, and by western  
435 blotting of pRBC protein extracts, as well as using recombinant VAR2CSA domains.  
436 Complement fixation among antibodies from malaria-exposed pregnant women was  
437 significantly higher than antibodies from non-exposed donors and correlated with IgG  
438 reactivity. Furthermore, complement-fixing antibodies were generally higher among  
439 multigravid than primigravid women, consistent with the reported acquisition of  
440 immunity to MiP. Consistent with data from Africa (15, 16), IgG1 (80%  
441 seropositivity) and IgG3 (37% seropositivity) dominated responses in PNG women  
442 and moderately correlated with complement-fixing antibodies. We observed some  
443 complement C3 fixation when using malaria non-exposed donor antibodies or non-  
444 opsonized pRBCs, suggesting some activation via the antibody-independent alternate  
445 pathway; however, complement fixation was always much higher in the presence of  
446 antibodies from pregnant women supporting a greater role for the classical pathway.  
447 Significant polymorphisms occur in VAR2CSA, which can impact on binding of  
448 acquired IgG (47, 50, 51). Previously we established that the CS2 isolate used in this  
449 study is well recognised by malaria-exposed pregnant women in PNG, and IgG  
450 reactivity to CS2 pRBCs strongly correlated with IgG reactivity to a placental-binding  
451 clinical isolate from PNG (37).



452 Interestingly, there was no clear evidence of enhanced MAC formation on  
453 pRBCs by antibodies, even though antibodies promoted C1q and C3 fixation.  
454 Consistent with this, complement did not result in pRBC lysis or inhibition of growth.  
455 Complement regulatory proteins expressed on RBCs (e.g. CD59) likely prevent  
456 effective MAC formation, as suggested by older studies (26). Our findings highlight  
457 the complexities of adaptive humoral immunity. While host regulatory mechanisms  
458 designed to protect RBCs may prevent MAC formation and lysis of pRBCs, antibody-  
459 complement interactions can still mediate effects through C1q and C3 fixation in  
460 acquired immunity targeting pRBCs.

461 Two earlier studies showed evidence of complement fixation by antibodies  
462 among non-pregnant individuals on pRBCs with known binding to CD36 and ICAM-  
463 1 endothelial receptors (26, 27). However, the acquisition and targets of these  
464 antibodies were not assessed, nor were associations with protective immunity. In  
465 contrast to our findings, one recent study evaluated purified IgG from a pool of  
466 plasma samples from malaria-exposed pregnant Ghanaian women and a VAR2CSA  
467 monoclonal antibody (52). Complement fixation was detected on recombinant  
468 VAR2CSA, but not on the surface of pRBCs. However, the acquisition and functions  
469 of antibodies, or associations with clinical features or outcomes were not assessed.  
470 The detection of limited complement fixation on pRBCs in that study, compared to  
471 our results, may reflect differences in the sensitivity of different assays and the  
472 reagents used, and in that study the authors used 1% fresh serum as a source of  
473 complement. Additionally, using a pool of samples would contribute to a reduced  
474 ability to detect complement-fixing antibodies if the prevalence of such antibodies is  
475 low in the population.

476 Importantly, complement fixing antibodies at enrolment were prospectively  
477 associated with a reduced risk of placental parasitaemia at delivery, suggesting this  
478 immune mechanism may contribute to reducing parasitemia. Our further exploratory  
479 analysis of associations with active and chronic infection subgroups (defined by  
480 placental histology) found similar associations. This protective association was only  
481 evident among women with *P. falciparum* infection at baseline, suggesting that  
482 women who mount higher complement-fixing antibodies when challenged with  
483 infection more effectively control and clear infection. Among women without  
484 infection at enrolment, there was no significant association between complement  
485 fixing antibodies to pRBCs and risk of placental infection. Where malaria

486 transmission is heterogenous only a proportion of the population are exposed to  
487 infection. One approach to address this is to stratify the analysis of associations with  
488 protection by infection status at baseline (53). Other studies investigating associations  
489 between antibodies and protection against malaria in children (54, 55) or pregnant  
490 women (56) have used this approach, revealing protective associations only in the  
491 infected group who have documented exposure to malaria. A potential limitation of  
492 our study is that women commenced in the study in mid-pregnancy (most were  
493 second trimester), even though we recruited pregnant women at their first antenatal  
494 clinic visit. Presenting to first antenatal clinic in the second trimester is commonly  
495 observed in PNG (57, 58). This means that we cannot fully account for malaria  
496 exposure history in their pregnancy. A further limitation is that placental tissue was  
497 available only for 77% women. However, we did not observe major difference in  
498 demographic or clinical features of women who did or did not have placental tissue  
499 collected (29). Ideally, a future study would enrol women early in pregnancy with  
500 frequent follow-up during pregnancy and employ a larger sample size to further  
501 investigate associations we observed here, including the relative roles of different  
502 antibodies and the influence of gravidity.

503 We found that complement significantly enhanced inhibition of pRBC  
504 adhesion to CSA by acquired antibodies, suggesting a potential mechanism mediating  
505 protective effects of complement-fixing antibodies. Additionally, it is well established  
506 that complement enhances phagocytosis through interactions with complement  
507 receptors expressed on monocytes and neutrophils, particularly via C3b (19, 59).  
508 Therefore, higher complement fixation by antibodies is likely to contribute to  
509 enhanced clearance of pRBCs. Anti-VAR2CSA antibodies have been proposed to  
510 protect against MiP possibly through inhibition of *P. falciparum* binding in the  
511 placenta along with enhanced phagocytosis (11, 15, 60, 61). Previous studies,  
512 however, have largely examined these functional mechanisms in the absence of  
513 complement. The initial step of the classical pathway of complement activation  
514 involving C1q appeared essential and sufficient in mediating inhibition enhancement.  
515 However, it should be noted that there is evidence that C1q can bind directly to CSA  
516 (62), emphasising the need for appropriate controls when assessing this effect. Others  
517 have shown complement can enhance inhibition of *P. falciparum* merozoite and  
518 sporozoite invasion (21, 23) and phagocytosis by monocytes (59). Prior studies of  
519 viruses have shown that binding of C1q by antibodies can enhance virus

520 neutralization, without the need for additional complement components (20, 63). In  
521 contrast to protective roles of antibody-complement interactions, widespread  
522 complement activation has also been implicated in MiP pathology. Higher plasma  
523 C5a was associated with adverse birth outcomes including low birth weight, fetal  
524 growth restriction and preterm birth (28). Excess C5a is thought to mediate  
525 pathogenesis via inflammation and skews angiogenic profiles critical for normal  
526 placental vascularization and development towards an anti-angiogenic profile that  
527 promotes fetal growth restriction (28). Therefore, there is a balance between antibody-  
528 mediated complement activity on the surface of pRBCs that may be protective, versus  
529 widespread systemic complement activation that may be detrimental (64). We  
530 propose that acquisition of antibodies with the right specificity and properties leads to  
531 effective complement-fixing activity on the pRBC surface that reduces placental  
532 infection through mechanisms such as pRBC placental binding inhibition and  
533 enhanced phagocytic clearance. However, in the absence of protective antibodies,  
534 infection goes unchecked leading to high-density placental infections triggering  
535 excessive complement activation contributing to poor birth outcomes. Further studies  
536 to understand protective versus detrimental responses would be valuable.

537         While *P. falciparum* expresses multiple antigens on the surface of pRBCs that  
538 can be targeted by antibodies (48), we found that complement-fixing antibodies  
539 predominantly target PfEMP1. We used genetically-modified CS2 *P. falciparum* in  
540 which PfSBP1 has been disrupted to inhibit PfEMP1 surface expression (36). That  
541 there was still some complement fixation on pRBCs lacking PfEMP1 expression  
542 suggests that other surface expressed antigens might be secondary targets of  
543 complement-fixing antibodies, and these may include RIFINs and STEVORs (65),  
544 and warrant future investigation. C3 fixation against CS2 SBP1KO pRBCs might also  
545 be the result of complement activation via the antibody-independent alternate  
546 pathway. We further demonstrated that VAR2CSA is a target of complement-fixing  
547 antibodies using recombinant DBL3 and DBL5 domains, which are prominent targets  
548 of acquired antibodies associated with protection from MiP (40, 66). It would be  
549 valuable to investigate the complement fixing activity of antibodies induced by  
550 vaccines based on VAR2CSA in recent clinical trials (14, 67).

551         In conclusion, we have generated significant new evidence supporting  
552 antibody-complement interactions in immunity against MiP. These findings provide

553 novel insights into the mechanisms mediating immunity in pregnancy and inform  
554 approaches to develop vaccines or other interventions against MiP.

555 **DECLARATIONS**

556 **Ethics and approval of consent to participate**

557 This study received ethical approval from the PNG Medical Research Advisory  
558 Council, the Melbourne Health Human Research Ethics Committee and Alfred Health  
559 Human Research Ethics Committee. Eligible women were read a statement describing  
560 the study and gave a written informed voluntary consent.

561

562 **Availability of data and materials**

563 The datasets used and/or analysed during the current study are available from the  
564 corresponding author on reasonable request.

565

566 **Competing interests**

567 The authors declare no competing interests.

568

569 **Consent for publication**

570 Not applicable. No details, images, or videos relating to an individual person are  
571 included.

572

573 **Funding**

574 This work was supported by the National Health and Medical Research Council  
575 (Project grant 575534 and Program Grant 1092789 to J.G.B. and S.J.R; Investigator  
576 Grant 1173046 and Research Fellowship 1077626 to J.G.B). Burnet Institute is  
577 supported by NHMRC Independent Research Institutes Infrastructure Support  
578 Scheme and the Victorian State Government Operational Infrastructure Support. JGB,  
579 SJR, IM, FFJF, HO, LR, MJB and JAC are members of the NHMRC Australian  
580 Centre for Research Excellence in Malaria Elimination.

581

582 **Author's contributions**

583 JGB, FJIF, SJR, and IM designed the research. DHO, MJB, AM, LR, JAC, DIS and  
584 AU performed the research, DHO and AM analysed the data and DHO and JGB  
585 wrote the manuscript with input from all authors. All authors read and approved the  
586 final version of the manuscript.

587

588 **Acknowledgements**

589 The authors thank the mothers and their families for participation in this study, the  
590 staff of Alexishafen Health Centre for their enthusiastic cooperation, and staff of the  
591 PNG Institute for Medical Research, particularly Francesca Baiwog (now deceased),  
592 Prof. Peter Siba and Prof. Willie Pomat. We also thank Prof. Joseph Smith (Seattle  
593 Children’s Research Institute, Seattle, USA) for his generous contribution of all the  
594 VAR2CSA recombinant proteins and Dr. Paul Gilson for the anti-HSP70 antibody.



595 **FIGURE LEGENDS**

596 **Figure 1: Antibodies from malaria-exposed PNG pregnant women mediated**  
597 **complement fixation on CS2 pRBCs**

598 Complement (A) C1q and (B) C3 fixation on CS2 pRBCs by flow cytometry.  
599 Complement fixation was tested using antibodies from PNG pregnant women (n=302)  
600 and Australian malaria non-exposed donors (n=15) in the presence of complement  
601 (NS). (C) Complement C3 fixation on CS2 pRBCs in the presence of NS or HIS by  
602 flow cytometry. CS2 pRBCs were opsonised with antibodies from 35 randomly  
603 selected PNG pregnant women or Australian malaria non-exposed donors (N=13) and  
604 in the presence of either normal serum or heat inactivated serum. Complement  
605 fixation is presented as the average geometric mean fluorescence intensity (gMFI) of  
606 each sample tested in duplicate and the red line represents the median gMFI for all  
607 samples tested. (D) C1q and C3 fixation by Western blot using magnet purified CS2  
608 pRBCs that were first opsonized with a pool of PNG or malaria non-exposed  
609 antibodies, in the presence of NS. Unopsonized sample (CS2 pRBCs incubated  
610 without antibody, but with NS) was used as a negative control and heat shock protein  
611 70 (HSP70) as a loading control.

612

613 **Figure 2: Limited evidence for complement C5-9 fixation and MAC activity on**  
614 **the surface of CS2 pRBCs**

615 (A) Complement C5-9 fixation on CS2 pRBCs was tested by flow cytometry  
616 following opsonization with either antibodies from a subset of 7 PNG donor samples  
617 (with moderate to high C1q/C3 fixing activity on CS2 pRBCs) or 6 Australian malaria  
618 non-exposed donors in the presence of NS. Complement fixation is presented as the  
619 average gMFI of each sample tested in duplicate and the red line represents the  
620 median gMFI for all samples tested in each category. (B) Correlation between  
621 complement C5-9 fixation and C1q/C3 fixation tested on a subset of 7 PNG donor  
622 samples (with moderate to high C1q/C3 fixing activity on CS2 pRBCs). (C)  
623 Complement-mediated pRBC killing/lysis was examined by culturing CS2 pRBCs  
624 opsonized with antibodies from PNG pregnant women (n=7) in the presence of  
625 normal serum, heat-inactivated serum or no-added serum and measuring parasitaemia  
626 by flow cytometry after two growth cycles. Data are presented as the average  
627 parasitaemia of each sample run in triplicate over 3 independent experiments. The  
628 dotted red line represents the median parasitaemia of CS2 pRBCs cultured in the

629 absence of either PNG or Australian malaria non-exposed antibodies and NS or HIS.  
630 Comparisons were made using Mann-Whitney U-test.

631

632 **Figure 3: VAR2CSA PfEMP1 is a major target of complement fixing antibodies**

633 Complement C1q fixation on (A) VAR2CSA-DBL5 (3D7) and (B) VAR2CSA-DBL3  
634 (7G8) recombinant proteins using antibodies from 302 PNG pregnant women and 15  
635 malaria non-exposed Australian donors. (C) C3 fixation on VAR2CSA-DBL5 (3D7)  
636 using antibodies from 35 randomly selected PNG pregnant women and 10 malaria  
637 non-exposed Australian donors (samples tested in duplicate). The median OD for all  
638 samples in each category is represented by the red line. Seropositivity was defined as  
639  $OD > \text{mean} + 3 \text{ standard deviations}$  of the 15 malaria non-exposed Australian  
640 controls. (D) Correlation between complement C1q and C3 fixation on VAR2CSA-  
641 DBL5 (3D7) using antibodies from 35 randomly selected PNG pregnant women  
642 (samples tested in duplicate). Complement (E) C1q and (F) C3 fixation on pRBCs  
643 was compared between the CS2-parental isolate and CS2 SBP1KO strain, which has  
644 reduced PfEMP1 surface expression. pRBCs were opsonized with 7 PNG antibody  
645 samples highly reactive to CS2 pRBCs. Complement fixation presented as the average  
646 gMFI of each sample run in duplicate from two independent experiments and bars  
647 show overall median gMFI and interquartile ranges.

648

649 **Figure 4: Complement fixation on VAR2CSA is associated with gravidity and *P.***  
650 ***falciparum* peripheral infection status at enrolment**

651 Complement C1q and C3 fixation was tested either on CS2 pRBCs by flow  
652 cytometry or on recombinant VAR2CSA-DBL5 (3D7) and VAR2CSA-DBL3 (7G8)  
653 domains by ELISA using samples from 302 PNG donors (primigravid n=115,  
654 multigravid n=187; non-infected=199, infected n=103). Complement (A) C1q and (B)  
655 C3 fixation on CS2 pRBCs by gravidity. Complement C1q fixation on (C)  
656 VAR2CSA-DBL5 (3D7) and (D) VAR2CSA-DBL3 (7G8) by gravidity. Complement  
657 (E) C1q and (F) C3 fixation on CS2 pRBCs by *P. falciparum* infection status at  
658 enrolment. Complement C1q fixation on (G) VAR2CSA-DBL5 (3D7) and (H)  
659 VAR2CSA-DBL3 (7G8) by *P. falciparum* infection status at enrolment. Data are  
660 presented as the average gMFI (flow cytometry) or optical density (OD; by ELISA) of  
661 each sample tested in duplicate and the red line represents the median gMFI or the  
662 OD. P values were calculated using the Mann-Whitney U test.

663 **Figure 5: Complement fixing antibodies are associated with reduced risk of *P.***  
664 ***falciparum* placental infection and enhanced inhibition of pRBC binding to CSA**  
665 **(A)** Odds ratios for *P. falciparum* placental infection for complement C1q and C3  
666 fixation levels stratified by *P. falciparum* infection status at enrolment, using logistic  
667 regression. Model included complement fixation as a continuous dependent variable,  
668 effect modification by *P. falciparum* peripheral infection status at enrolment  
669 (uninfected vs infected). Model includes additional adjustment for gravidity  
670 (primigravid vs multigravid), location of residence (town vs village), smoking (no vs  
671 yes), middle upper arm circumference in cm, gender of newborn (male vs female),  
672 haemoglobin levels (g/dl) at enrolment, South East Asian Ovalocytosis (wild type vs  
673 SAO) and  $\alpha$ -thalassaemia (wild type vs heterozygous/homozygous). A total of 140  
674 uninfected and 71 *P. falciparum* infected (at enrolment ANC visit) individuals were  
675 included in the analysis of complement fixation on pRBCs and 141 uninfected and 71  
676 *P. falciparum* infected individuals for complement fixation on VAR2CSA  
677 recombinant protein domains (VAR2CSA-DBL5 (3D7) & VAR2CSA-DBL3 (7G8)).  
678 Plots represent odds ratios for *P. falciparum* placental infection in individuals with  
679 high (75<sup>th</sup> percentile) and intermediate (50<sup>th</sup> percentile) complement fixing antibodies  
680 relative to low antibody levels (25<sup>th</sup> percentile) and bars represent 95% confidence  
681 intervals. Statistically significant associations ( $P < 0.05$ ) are shown in asterisks. **(B)**  
682 CS2 pRBCs binding to CSA was tested following opsonisation of CS2 pRBCs with  
683 10% PNG antibody pool in the presence of NS, purified human C1q or C1q-depleted  
684 human serum. A malaria non-exposed antibody pool was used as a negative control.  
685 Plots represent median and interquartile range of pRBCs bound to CSA per mm<sup>2</sup>.  
686 Each data point represents an independent assay with 3-6 independent assays  
687 performed for each condition.  
688

689 TABLES

690

691 Table 1: Study population characteristics by *P. falciparum* infection at enrolment

<i>Variable</i>	<i>Total (N=302)</i>	<i>Uninfected at enrolment (N=199)</i>	<i>Infected at enrolment (N=103)</i>
<b>Enrolment Demographics</b>			
Age	24 (21 – 28)	24 (21 – 30)	23 (20 – 27)
Gestational age (weeks)	26 (22 – 28)	26 (22 – 28)	25 (22 – 29)
Gravidity			
Primigravid	115/302 (38%)	66/199 (33%)	49/103 (48%)
Multigravid	187/302 (62%)	133/199 (67%)	54/103 (52%)
Middle upper arm circumference	22 (21 – 23)	23 (21 – 24)	22 (22 – 23)
Smokes	60/301 (20%)	40/199 (20%)	20/2102 (20%)
<b>Infections at enrolment</b>			
Peripheral <i>P. falciparum</i> <sup>a</sup>	103/302 (34%)	0/199 (0%)	103/103 (100%)
<b>Infections at delivery</b>			
Peripheral <i>P. falciparum</i> <sup>a</sup>	32/288 (11%)	22 /190 (12%)	11/98 (11%)
<b>Placental histology<sup>b</sup></b>			
No infection	81/233 (35%)	64/154 (41)	17/79 (21%)
Acute infection	90/233 (39%)	64/154 (39%)	30/79 (38%)
Chronic infection	42/233 (18%)	21/154 (14%)	21/79 (27%)
Past infection	20/233 (8%)	9/154 (6%)	11/79 (14%)
<b>Haemoglobin at delivery</b>			
Haemoglobin (g/dl)	9.4 (8.2 – 10.3)	9.4 (8.2 – 10.5)	9.2 (8.2 – 10.2)
Severe anaemia (<8g/dl)	68/285 (24%)	45/188 (24%)	23/97 (24%)
<b>Residence</b>			
Town	7/299 (2%)	7/197 (4%)	0/102 (0%)
Village	292/299 (98%)	190/197 (96%)	102/102 (100%)
<b>Maternal Genetics</b>			
<b>SAO</b>			
Normal	261/302 (86%)	176/199 (88%)	85/103 (83%)
SAO	41/302 (14%)	23/199 (12%)	18/103 (17%)
<b>α<sup>+</sup>thalassaemia</b>			
Normal α globin	59/302 (20%)	40/199 (20%)	19/103 (19%)
Heterozygous	112/302 (43%)	72/199 (36%)	40/103 (39%)
Homozygous	131/302 (37%)	87/199 (44%)	44/103 (43%)

692 Data are presented as median (25<sup>th</sup> percentile – 75<sup>th</sup> percentile) and n/total (%) for categorical valuables

693 <sup>a</sup>Parasite positive by light microscopy, confirmed by PCR. <sup>b</sup>Placental infection confirmed by histology.

694 Missing data for variables of; age and gestational age (n=13), smoker (n=1), middle upper arm

695 circumference (n=12), smoke (n=1), peripheral parasitaemia at delivery (n=14), placental histology

696 (n=69), Hb at delivery (n=17) and location of residence (n=3)

697 **Table 2: Spearman’s rank correlations between C1q fixation and antibodies to**  
698 **VAR2CSA DBL5 and DBL3 domains**

<i>Ig</i>	<i>C1q fixation</i>	
	<b>DBL5</b>	<b>DBL3</b>
<i>Total IgG</i>	0.76	0.75
<i>IgG1</i>	0.58	0.51
<i>IgG2</i>	0.46	0.35
<i>IgG3</i>	0.56	0.40

699 All correlations were statistically significant;  $P < 0.001$ . IgG4 responses were not  
700 detectable in this cohort. N=302

## 701 REFERENCES

- 702 1. WHO. World Malaria Report 2019 [Available from:  
703 <https://www.who.int/publications/i/item/world-malaria-report-2019>.
- 704 2. Beeson JG, Amin N, Kanjala M, Rogerson SJ. Selective accumulation of  
705 mature asexual stages of *Plasmodium falciparum*-infected erythrocytes in the  
706 placenta. *Infect Immun*. 2002;70(10):5412-5.
- 707 3. Walter PR, Garin Y, Blot P. Placental pathologic changes in malaria. A  
708 histologic and ultrastructural study. *Am J Pathol*. 1982;109(3):330-42.
- 709 4. Rogerson SJ, Chaiyaroj SC, Ng K, Reeder JC, Brown GV. Chondroitin sulfate  
710 A is a cell surface receptor for *Plasmodium falciparum*-infected erythrocytes. *J*  
711 *Exp Med*. 1995;182(1):15-20.
- 712 5. Fried M, Duffy PE. Adherence of *Plasmodium falciparum* to chondroitin  
713 sulfate A in the human placenta. *Science*. 1996;272(5267):1502-4.
- 714 6. Beeson JG, Rogerson SJ, Cooke BM, Reeder JC, Chai W, Lawson AM, et al.  
715 Adhesion of *Plasmodium falciparum*-infected erythrocytes to hyaluronic acid in  
716 placental malaria. *Nat Med*. 2000;6(1):86-90.
- 717 7. Flick K, Scholander C, Chen Q, Fernandez V, Pouvelle B, Gysin J, et al. Role  
718 of nonimmune IgG bound to PfEMP1 in placental malaria. *Science*.  
719 2001;293(5537):2098-100.
- 720 8. Salanti A, Dahlback M, Turner L, Nielsen MA, Barfod L, Magistrado P, et al.  
721 Evidence for the involvement of VAR2CSA in pregnancy-associated malaria. *J Exp*  
722 *Med*. 2004;200(9):1197-203.
- 723 9. Beeson JG, Duffy PE. The immunology and pathogenesis of malaria during  
724 pregnancy. *Curr Top Microbiol Immunol*. 2005;297:187-227.
- 725 10. Cutts JC, Agius PA, Zaw L, Powell R, Moore K, Draper B, et al. Pregnancy-  
726 specific malarial immunity and risk of malaria in pregnancy and adverse birth  
727 outcomes: a systematic review. *BMC medicine*. 2020;18(1):14.
- 728 11. Fried M, Nosten F, Brockman A, Brabin BJ, Duffy PE. Maternal antibodies  
729 block malaria. *Nature*. 1998;395(6705):851-2.
- 730 12. Keen J, Serghides L, Ayi K, Patel SN, Ayisi J, van Eijk A, et al. HIV impairs  
731 opsonic phagocytic clearance of pregnancy-associated malaria parasites. *PLoS*  
732 *Med*. 2007;4(5):e181.
- 733 13. Sirima SB, Richert L, Chene A, Konate AT, Champion C, Dechavanne S, et al.  
734 PRIMVAC vaccine adjuvanted with Alhydrogel or GLA-SE to prevent placental  
735 malaria: a first-in-human, randomised, double-blind, placebo-controlled study.  
736 *Lancet Infect Dis*. 2020;20(5):585-97.
- 737 14. Mordmuller B, Sulyok M, Egger-Adam D, Resende M, de Jongh WA, Jensen  
738 MH, et al. First-in-human, Randomized, Double-blind Clinical Trial of  
739 Differentially Adjuvanted PAMVAC, A Vaccine Candidate to Prevent Pregnancy-  
740 associated Malaria. *Clin Infect Dis*. 2019;69(9):1509-16.
- 741 15. Elliott SR, Brennan AK, Beeson JG, Tadesse E, Molyneux ME, Brown GV, et  
742 al. Placental malaria induces variant-specific antibodies of the cytophilic  
743 subtypes immunoglobulin G1 (IgG1) and IgG3 that correlate with adhesion  
744 inhibitory activity. *Infect Immun*. 2005;73(9):5903-7.
- 745 16. Megnekou R, Staalsoe T, Taylor DW, Leke R, Hviid L. Effects of pregnancy  
746 and intensity of *Plasmodium falciparum* transmission on immunoglobulin G  
747 subclass responses to variant surface antigens. *Infect Immun*. 2005;73(7):4112-  
748 8.



- 749 17. Vidarsson G, Dekkers G, Rispens T. IgG subclasses and allotypes: from  
750 structure to effector functions. *Frontiers in immunology*. 2014;5:520.
- 751 18. Kurtovic L, Boyle MJ, Opi DH, Kennedy AT, Tham WH, Reiling L, et al.  
752 Complement in malaria immunity and vaccines. *Immunological reviews*.  
753 2020;293(1):38-56.
- 754 19. Merle NS, Church SE, Fremeaux-Bacchi V, Roumenina LT. Complement  
755 System Part I - Molecular Mechanisms of Activation and Regulation. *Frontiers in*  
756 *immunology*. 2015;6:262.
- 757 20. Mehlhop E, Nelson S, Jost CA, Gorlatov S, Johnson S, Fremont DH, et al.  
758 Complement protein C1q reduces the stoichiometric threshold for antibody-  
759 mediated neutralization of West Nile virus. *Cell Host Microbe*. 2009;6(4):381-91.
- 760 21. Boyle MJ, Reiling L, Feng G, Langer C, Osier FH, Aspelung-Jones H, et al.  
761 Human antibodies fix complement to inhibit *Plasmodium falciparum* invasion of  
762 erythrocytes and are associated with protection against malaria. *Immunity*.  
763 2015;42(3):580-90.
- 764 22. Reiling L, Boyle MJ, White MT, Wilson DW, Feng G, Weaver R, et al. Targets  
765 of complement-fixing antibodies in protective immunity against malaria in  
766 children. *Nat Commun*. 2019;10(1):610.
- 767 23. Kurtovic L, Behet MC, Feng G, Reiling L, Chelimo K, Dent AE, et al. Human  
768 antibodies activate complement against *Plasmodium falciparum* sporozoites, and  
769 are associated with protection against malaria in children. *BMC medicine*.  
770 2018;16(1):61.
- 771 24. Behet MC, Kurtovic L, van Gemert GJ, Haukes CM, Siebelink-Stoter R,  
772 Graumans W, et al. The complement system contributes to functional antibody-  
773 mediated responses induced by immunization with *Plasmodium falciparum*  
774 malaria sporozoites. *Infect Immun*. 2018.
- 775 25. Healer J, McGuinness D, Hopcroft P, Haley S, Carter R, Riley E.  
776 Complement-mediated lysis of *Plasmodium falciparum* gametes by malaria-  
777 immune human sera is associated with antibodies to the gamete surface antigen  
778 Pfs230. *Infect Immun*. 1997;65(8):3017-23.
- 779 26. Wiesner J, Jomaa H, Wilhelm M, Tony HP, Kremsner PG, Horrocks P, et al.  
780 Host cell factor CD59 restricts complement lysis of *Plasmodium falciparum*-  
781 infected erythrocytes. *Eur J Immunol*. 1997;27(10):2708-13.
- 782 27. Stanley HA, Mayes JT, Cooper NR, Reese RT. Complement activation by the  
783 surface of *Plasmodium falciparum* infected erythrocytes. *Mol Immunol*.  
784 1984;21(2):145-50.
- 785 28. Conroy AL, Silver KL, Zhong K, Rennie M, Ward P, Sarma JV, et al.  
786 Complement activation and the resulting placental vascular insufficiency drives  
787 fetal growth restriction associated with placental malaria. *Cell Host Microbe*.  
788 2013;13(2):215-26.
- 789 29. Stanistic DI, Moore KA, Baiwog F, Ura A, Clapham C, King CL, et al. Risk  
790 factors for malaria and adverse birth outcomes in a prospective cohort of  
791 pregnant women resident in a high malaria transmission area of Papua New  
792 Guinea. *Trans R Soc Trop Med Hyg*. 2015;109(5):313-24.
- 793 30. Bulmer JN, Rasheed FN, Francis N, Morrison L, Greenwood BM. Placental  
794 malaria. I. Pathological classification. *Histopathology*. 1993;22(3):211-8.
- 795 31. Bulmer JN, Rasheed FN, Morrison L, Francis N, Greenwood BM. Placental  
796 malaria. II. A semi-quantitative investigation of the pathological features.  
797 *Histopathology*. 1993;22(3):219-25.

- 798 32. Cockburn IA, Mackinnon MJ, O'Donnell A, Allen SJ, Moulds JM, Baisor M, et  
799 al. A human complement receptor 1 polymorphism that reduces Plasmodium  
800 falciparum rosetting confers protection against severe malaria. *Proc Natl Acad*  
801 *Sci U S A*. 2004;101(1):272-7.
- 802 33. Williams TN. Human red blood cell polymorphisms and malaria. *Curr*  
803 *Opin Microbiol*. 2006;9(4):388-94.
- 804 34. Lin E, Tavul L, Michon P, Richards JS, Dabod E, Beeson JG, et al. Minimal  
805 association of common red blood cell polymorphisms with Plasmodium  
806 falciparum infection and uncomplicated malaria in Papua New Guinean school  
807 children. *Am J Trop Med Hyg*. 2010;83(4):828-33.
- 808 35. Duffy MF, Byrne TJ, Elliott SR, Wilson DW, Rogerson SJ, Beeson JG, et al.  
809 Broad analysis reveals a consistent pattern of var gene transcription in  
810 Plasmodium falciparum repeatedly selected for a defined adhesion phenotype.  
811 *Mol Microbiol*. 2005;56(3):774-88.
- 812 36. Cooke BM, Buckingham DW, Glenister FK, Fernandez KM, Bannister LH,  
813 Marti M, et al. A Maurer's cleft-associated protein is essential for expression of  
814 the major malaria virulence antigen on the surface of infected red blood cells. *J*  
815 *Cell Biol*. 2006;172(6):899-908.
- 816 37. Hommel M, David PH, Oligino LD, David JR. Expression of strain-specific  
817 surface antigens on Plasmodium falciparum-infected erythrocytes. *Parasite*  
818 *Immunol*. 1982;4(6):409-19.
- 819 38. Beeson JG, Brown GV, Molyneux ME, Mhango C, Dzinjalama F, Rogerson  
820 SJ. Plasmodium falciparum isolates from infected pregnant women and children  
821 are associated with distinct adhesive and antigenic properties. *J Infect Dis*.  
822 1999;180(2):464-72.
- 823 39. Avril M, Hathaway MJ, Cartwright MM, Gose SO, Narum DL, Smith JD.  
824 Optimizing expression of the pregnancy malaria vaccine candidate, VAR2CSA in  
825 *Pichia pastoris*. *Malar J*. 2009;8:143.
- 826 40. Tutterrow YL, Avril M, Singh K, Long CA, Leke RJ, Sama G, et al. High levels  
827 of antibodies to multiple domains and strains of VAR2CSA correlate with the  
828 absence of placental malaria in Cameroonian women living in an area of high  
829 Plasmodium falciparum transmission. *Infect Immun*. 2012;80(4):1479-90.
- 830 41. Fernandez P, Petres S, Mecheri S, Gysin J, Scherf A. Strain-transcendent  
831 immune response to recombinant Var2CSA DBL5-epsilon domain block P.  
832 falciparum adhesion to placenta-derived BeWo cells under flow conditions. *PLoS*  
833 *One*. 2010;5(9):e12558.
- 834 42. Oleinikov AV, Francis SE, Dorfman JR, Rossnagle E, Balcaitis S, Getz T, et  
835 al. VAR2CSA domains expressed in *Escherichia coli* induce cross-reactive  
836 antibodies to native protein. *J Infect Dis*. 2008;197(8):1119-23.
- 837 43. Andersen P, Nielsen MA, Resende M, Rask TS, Dahlback M, Theander T, et  
838 al. Structural insight into epitopes in the pregnancy-associated malaria protein  
839 VAR2CSA. *PLoS Pathog*. 2008;4(2):e42.
- 840 44. Tuikue Ndam NG, Salanti A, Le-Hesran JY, Cottrell G, Fievet N, Turner L, et  
841 al. Dynamics of anti-VAR2CSA immunoglobulin G response in a cohort of  
842 senegalese pregnant women. *J Infect Dis*. 2006;193(5):713-20.
- 843 45. Hommel M, Chan JA, Umbers AJ, Langer C, Rogerson SJ, Smith JD, et al.  
844 Evaluating antibody functional activity and strain-specificity of vaccine  
845 candidates for malaria in pregnancy using in vitro phagocytosis assays. *Parasites*  
846 *& vectors*. 2018;11(1):69.

- 847 46. Turrini F, Arese P, Yuan J, Low PS. Clustering of integral membrane  
848 proteins of the human erythrocyte membrane stimulates autologous IgG binding,  
849 complement deposition, and phagocytosis. *J Biol Chem.* 1991;266(35):23611-7.
- 850 47. Hommel M, Elliott SR, Soma V, Kelly G, Fowkes FJ, Chesson JM, et al.  
851 Evaluation of the antigenic diversity of placenta-binding *Plasmodium falciparum*  
852 variants and the antibody repertoire among pregnant women. *Infect Immun.*  
853 2010;78(5):1963-78.
- 854 48. Chan JA, Howell KB, Reiling L, Ataide R, Mackintosh CL, Fowkes FJ, et al.  
855 Targets of antibodies against *Plasmodium falciparum*-infected erythrocytes in  
856 malaria immunity. *J Clin Invest.* 2012;122(9):3227-38.
- 857 49. Maier AG, Rug M, O'Neill MT, Beeson JG, Marti M, Reeder J, et al. Skeleton-  
858 binding protein 1 functions at the parasitophorous vacuole membrane to traffic  
859 PfEMP1 to the *Plasmodium falciparum*-infected erythrocyte surface. *Blood.*  
860 2007;109(3):1289-97.
- 861 50. Bockhorst J, Lu F, Janes JH, Keebler J, Gamain B, Awadalla P, et al.  
862 Structural polymorphism and diversifying selection on the pregnancy malaria  
863 vaccine candidate VAR2CSA. *Mol Biochem Parasitol.* 2007;155(2):103-12.
- 864 51. Beeson JG, Mann EJ, Byrne TJ, Caragounis A, Elliott SR, Brown GV, et al.  
865 Antigenic differences and conservation among placental *Plasmodium falciparum*-  
866 infected erythrocytes and acquisition of variant-specific and cross-reactive  
867 antibodies. *J Infect Dis.* 2006;193(5):721-30.
- 868 52. Larsen MD, Quintana MDP, Ditlev SB, Bayarri-Olmos R, Ofori MF, Hviid L,  
869 et al. Evasion of Classical Complement Pathway Activation on *Plasmodium*  
870 *falciparum*-Infected Erythrocytes Opsonized by PfEMP1-Specific IgG. *Frontiers in*  
871 *immunology.* 2018;9:3088.
- 872 53. Osier FH, Fegan G, Polley SD, Murungi L, Verra F, Tetteh KK, et al. Breadth  
873 and magnitude of antibody responses to multiple *Plasmodium falciparum*  
874 merozoite antigens are associated with protection from clinical malaria. *Infect*  
875 *Immun.* 2008;76(5):2240-8.
- 876 54. Valmaseda A, Macete E, Nhabomba A, Guinovart C, Aide P, Bardaji A, et al.  
877 Identifying Immune Correlates of Protection Against *Plasmodium falciparum*  
878 Through a Novel Approach to Account for Heterogeneity in Malaria Exposure.  
879 *Clin Infect Dis.* 2018;66(4):586-93.
- 880 55. Greenhouse B, Ho B, Hubbard A, Njama-Meya D, Narum DL, Lanar DE, et  
881 al. Antibodies to *Plasmodium falciparum* antigens predict a higher risk of malaria  
882 but protection from symptoms once parasitemic. *J Infect Dis.* 2011;204(1):19-26.
- 883 56. Mayor A, Kumar U, Bardaji A, Gupta P, Jimenez A, Hamad A, et al.  
884 Improved pregnancy outcomes in women exposed to malaria with high antibody  
885 levels against *Plasmodium falciparum*. *J Infect Dis.* 2013;207(11):1664-74.
- 886 57. Peach E, Morgan C, Scoullar MJL, Fowkes FJI, Kennedy E, Melepia P, et al.  
887 Risk factors and knowledge associated with high unintended pregnancy rates  
888 and low family planning use among pregnant women in Papua New Guinea. *Sci*  
889 *Rep.* 2021;11(1):1222.
- 890 58. Scoullar MJL, Boeuf P, Peach E, Fidelis R, Tokmun K, Melepia P, et al.  
891 *Mycoplasma genitalium* and Other Reproductive Tract Infections in Pregnant  
892 Women, Papua New Guinea, 2015-2017. *Emerg Infect Dis.* 2021;27(3):894-904.
- 893 59. Zhou J, Feng G, Beeson J, Hogarth PM, Rogerson SJ, Yan Y, et al.  
894 CD14(hi)CD16+ monocytes phagocytose antibody-opsonised *Plasmodium*

895 falciparum infected erythrocytes more efficiently than other monocyte subsets,  
896 and require CD16 and complement to do so. BMC medicine. 2015;13:154.  
897 60. Feng G, Aitken E, Yosaatmadja F, Kalilani L, Meshnick SR, Jaworowski A, et  
898 al. Antibodies to variant surface antigens of Plasmodium falciparum-infected  
899 erythrocytes are associated with protection from treatment failure and the  
900 development of anemia in pregnancy. J Infect Dis. 2009;200(2):299-306.  
901 61. Duffy PE, Fried M. Antibodies that inhibit Plasmodium falciparum  
902 adhesion to chondroitin sulfate A are associated with increased birth weight and  
903 the gestational age of newborns. Infect Immun. 2003;71(11):6620-3.  
904 62. Silvestri L, Baker JR, Roden L, Stroud RM. The C1q inhibitor in serum is a  
905 chondroitin 4-sulfate proteoglycan. J Biol Chem. 1981;256(14):7383-7.  
906 63. Kurtovic L, Beeson JG. Complement Factors in COVID-19 Therapeutics and  
907 Vaccines. Trends Immunol. 2021;42(2):94-103.  
908 64. Oyong DA, Kenangalem E, Poespoprodjo JR, Beeson JG, Anstey NM, Price  
909 RN, et al. Loss of complement regulatory proteins on uninfected erythrocytes in  
910 vivax and falciparum malaria anemia. JCI insight. 2018;3(22).  
911 65. Chan JA, Howell KB, Langer C, Maier AG, Hasang W, Rogerson SJ, et al. A  
912 single point in protein trafficking by Plasmodium falciparum determines the  
913 expression of major antigens on the surface of infected erythrocytes targeted by  
914 human antibodies. Cellular and molecular life sciences : CMLS.  
915 2016;73(21):4141-58.  
916 66. Avril M, Cartwright MM, Hathaway MJ, Smith JD. Induction of strain-  
917 transcendent antibodies to placental-type isolates with VAR2CSA DBL3 or DBL5  
918 recombinant proteins. Malar J. 2011;10:36.  
919 67. Chene A, Gangnard S, Guadall A, Ginisty H, Leroy O, Havelange N, et al.  
920 Preclinical immunogenicity and safety of the cGMP-grade placental malaria  
921 vaccine PRIMVAC. EBioMedicine. 2019;42:145-56.  
922

Figure 1: Antibodies from malaria-exposed PNG pregnant women mediated complement fixation on CS2 pRBCs

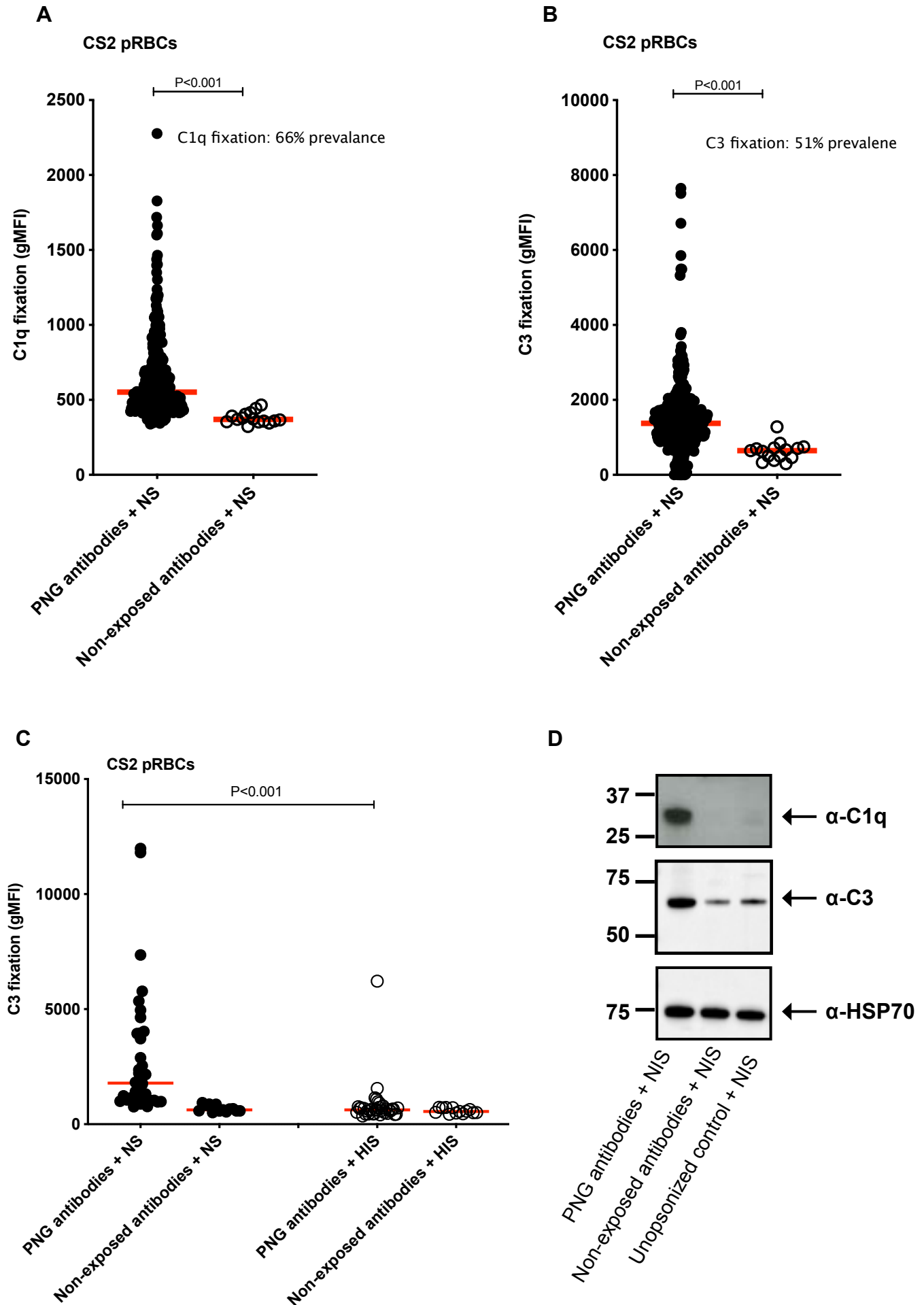


Figure 2: Limited evidence for complement C5-9 fixation and MAC activity on the surface of CS2 pRBCs

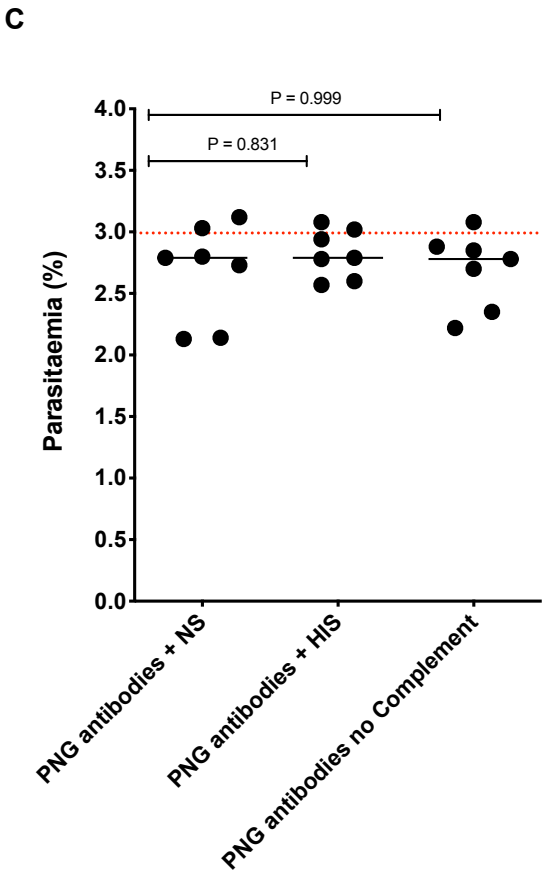
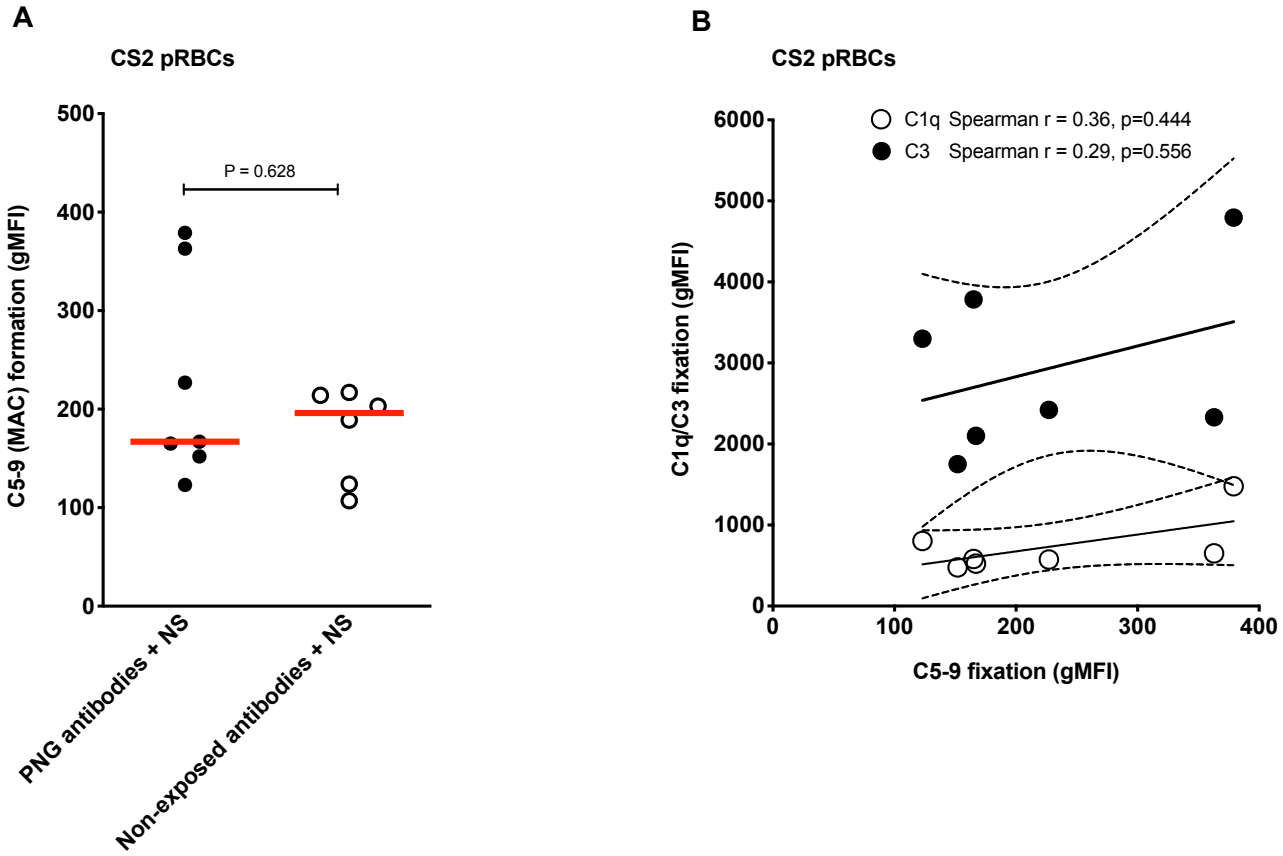


Figure 3: VAR2CSA PfEMP1 is a major target of complement fixing antibodies

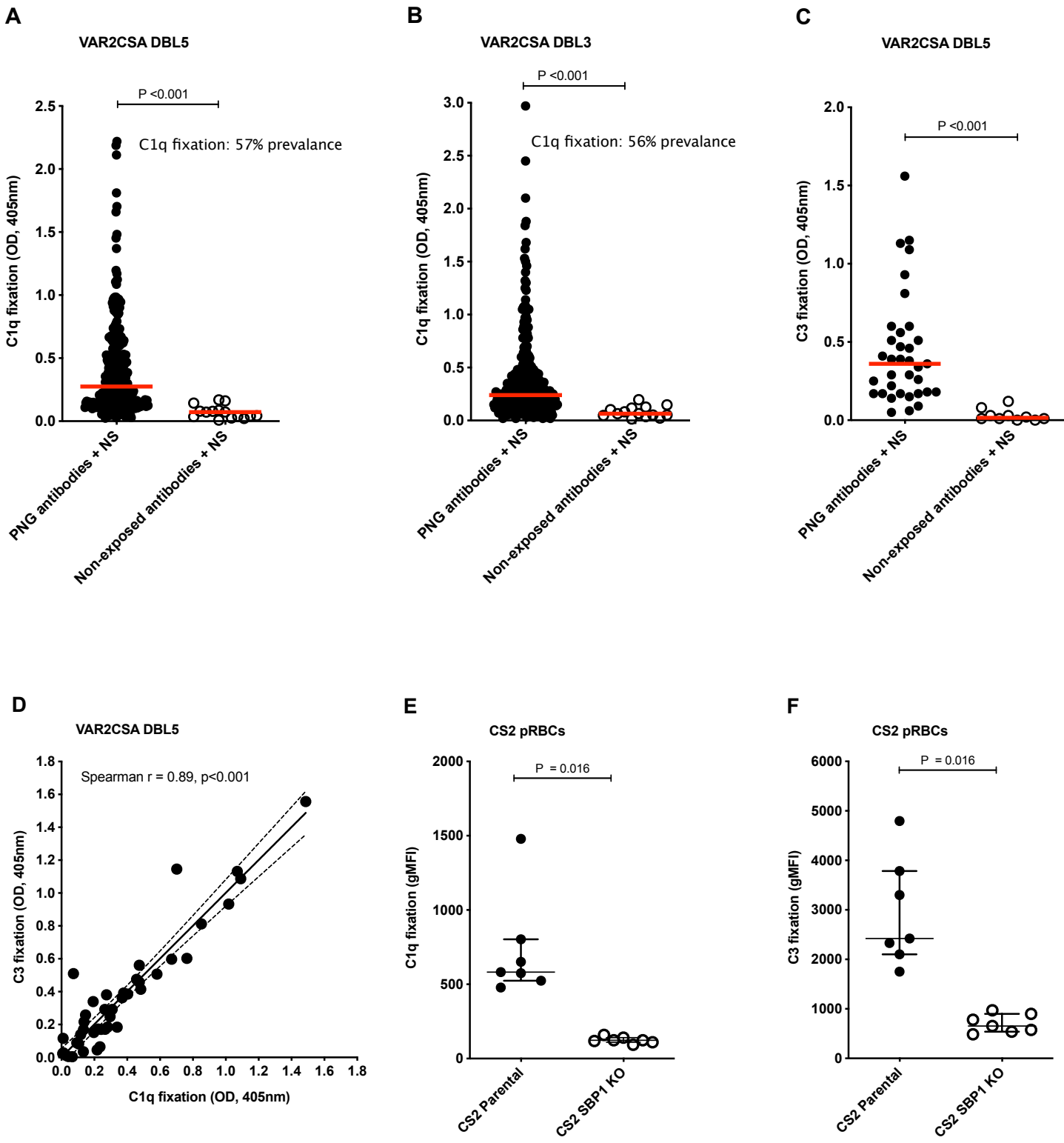
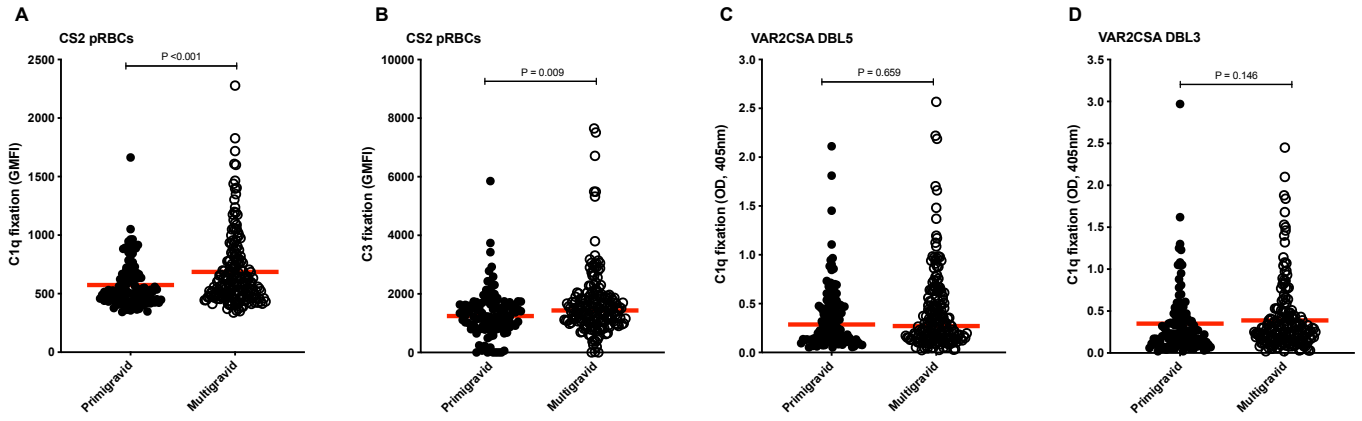


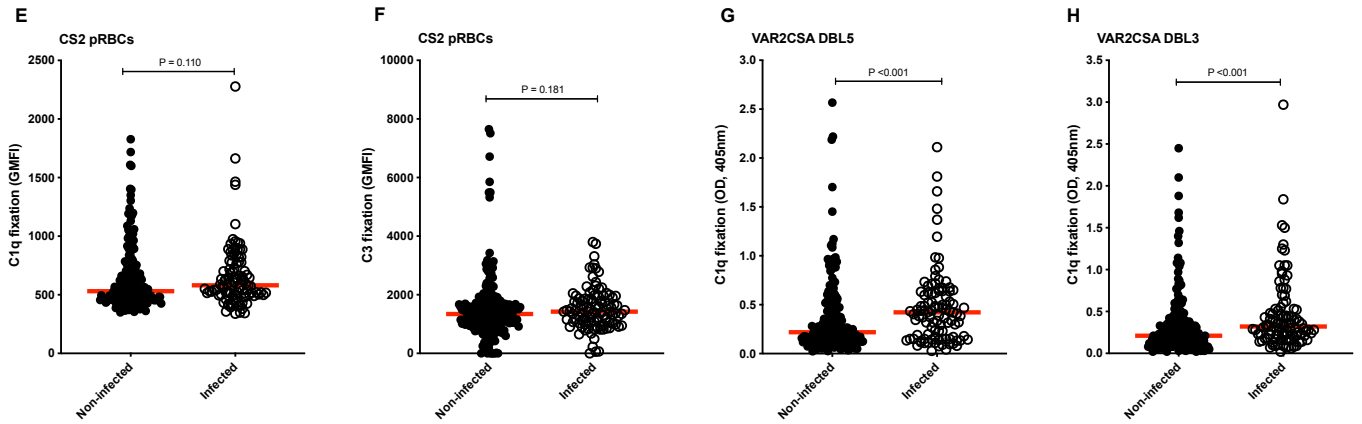


Figure 4: Complement fixation on VAR2CSA is associated with gravidity and *P. falciparum* peripheral infection status at enrolment

### Gravidity

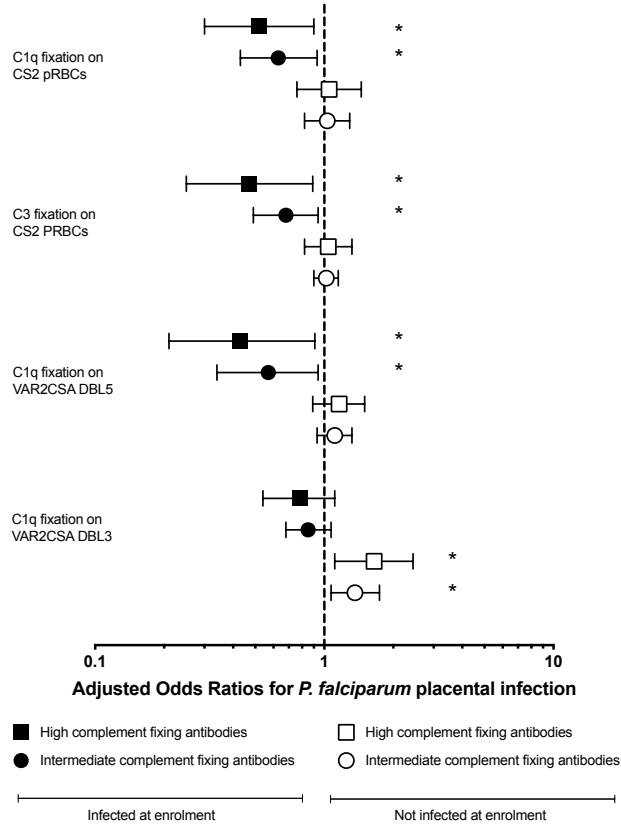


### Infection status at enrolment



**Figure 5: Complement fixing antibodies are associated with reduced risk of *P. falciparum* placental infection and enhanced inhibition of pRBC binding to CSA**

**A**



**B**

