

1 Article

2 Early transfusion of convalescent plasma improves the clinical 3 outcome in severe SARS-CoV2 infection

4 Eszter Fodor^{1,8,*}, Veronika Müller², Zsolt Iványi³, Tímea Berki¹⁰, Kuten Pella Olga¹, Mira Ambrus⁸, Ágnes Sárkány⁵,
5 Árpád Skázel⁵, Ágnes Madár⁸, Dorottya Kardos¹¹, Gábor Kemenesi⁴, Fanni Földes⁴, Sándor Nagy⁶, Andrea
6 Matusovits⁶, Nacsa János⁶, Attila Tordai⁹, Ferenc Jakab⁴, Zsombor Lacza^{1,7,8}

7 ¹Orthosera Kft, Budapest, 1149, Hungary; eszter.fodor@orthosera.com, olga.kuten@orthosera.com

8 ²Semmelweis University, Department of Pulmonology, Budapest, 1083, Hungary; muller.veronika@med.semmelweis-univ.hu

9 ³Semmelweis University, Department of Anesthesiology and Intensive Therapy, Budapest, 1082 Hungary; ivanyizs@gmail.com

10 ⁴University of Pécs, Szentágotthai Research Center, National Laboratory of Virology, Pécs, 7622, Hungary; jakab.ferenc@pte.hu

11 fanni4444@gmail.com, kemenesi.gabor@gmail.com

12 ⁵Szent György University Teaching Hospital, Székesfehérvár, 8000, Hungary; skazelarpad@gmail.com, asarkany1@gmail.com

13 ⁶Hungarian National Blood Transfusion Service, Budapest, 1113, Hungary; nagy.sandor@ovsz.hu, foigazgato@ovsz.hu, nacsa.janos@ovsz.hu

14 ⁷Semmelweis University, Department of Translational Medicine, 1085, Budapest, Hungary; zsombor.lacza@orthosera.com

15 ⁸University of Physical Education, Budapest, 1223, Hungary; agnes.madar@orthosera.com, mira.abrus@tf.hu

16 ⁹Semmelweis University, Department of Transfusiology, Budapest, 1089, Hungary; tordai.attila@med.semmelweis-univ.hu

17 ¹⁰University of Pécs, Department of Immunology and Biotechnology, Budapest, 7643, Hungary; berki.timea@pte.hu

18 ¹¹Research Center Natural Sciences, Budapest, 1117, Hungary; dorottya333@gmail.com

19
20 *Correspondence: eszter.fodor@orthosera.com; Tel.: +36306640494

21
22 **Conflicts of Interest:** The authors declare no conflict of interest. Zsombor Lacza owns stock in OrthoSera kft, a startup
23 company developing the hyperacute serum technology towards clinical application.

24 **Financial Disclosure statement :** All authors declare that there is no financial interests related to the material in the
25 manuscript.

26
27 **Abstract:** Plasma harvested from convalescent COVID-19 patients (CCP) has been applied as first-line therapy in the
28 early phase of the SARS-CoV2 pandemic through clinical studies using various protocols. We present data from a
29 cohort of 267 hospitalized, severe COVID-19 patients who received CCP. No transfusion-related complications were
30 reported, indicating the overall safety of CCP therapy. Patients who eventually died from COVID-19 received CCP
31 significantly later (3.95 versus 5.22 days after hospital admission) and had higher interleukin 6 (IL-6) levels (28.9
32 pg/ml versus 102.5 pg/ml) than those who survived. In addition, CCP-transfusion caused a significant reduction in the
33 overall inflammatory status of the patients regardless of the severity of disease or outcome, as evidenced by
34 decreasing C-reactive protein, IL6 and ferritin levels. We conclude that, CCP-transfusion is a safe and effective
35 supplementary treatment modality for hospitalized COVID-19 patients characterized by better expected outcome if
36 applied as early as possible. We also observed that, IL-6 may be a suitable laboratory parameter for patient selection
37 and monitoring of CCP therapy effectiveness.

38 **Keywords:** convalescent plasma, Interleukin-6, SARS2-CoV, COVID-19

40 1. Introduction

41 Severe acute respiratory syndrome caused by the novel coronavirus SARS-CoV2 has been responsible for an
42 unprecedented world pandemic starting out from Wuhan (China) in January 2020. This represented an extraordinary

43 challenge for the health care systems and entire societies of the developed countries [1,2] including Hungary [3]. The
44 SARS-CoV2-induced COVID-19 disease is characterized by acute viral pneumonia associated with progressive
45 respiratory insufficiency, requiring oxygen supplementation in about 15% and mechanical ventilation in 5% of the
46 cases with reported overall mortality rates of 2.3% [4,5]. Since SARS-CoV2 is a new human pathogen, initially neither
47 vaccines nor effective therapeutic modalities were available. With several earlier attempts of antiviral passive
48 immunotherapy, COVID-19 convalescent plasma (CCP) therapy has quickly become a readily available and
49 promising therapeutic modality against severe COVID-19 [6,7]. Given the large amount of clinical experience with
50 allogeneic plasma transfusions and the relative lack of potential side effects, regulatory agencies have quickly granted
51 permissions for several parallel clinical trials with CCP [8–10]. After CCP transfusion, virus neutralization antibodies
52 represent the most important mode of action but moderating the unnecessarily severe immune reaction by several
53 soluble factors has also been proposed [11–13].

54 Apart from the multitude of case studies, initial reports of CCP clinical studies on sizeable cohorts have not been able
55 to demonstrate significant improvements in mortality rates [14–17]. In contrast, in subsequent studies, mortality-
56 benefits were documented among unselected, severe COVID-19 patients after CCP-transfusions in the USA [18–21], in
57 China [22,23], in India [24], in Europe [25,26] and among selected patients based on risk factors [27,28]. In addition, a
58 potential benefit was also observed in a meta-analysis[29]. Development of severe COVID-19 associated respiratory
59 disease was significantly less frequent after CCP transfusion administered within 72 hours of onset of mild COVID-19
60 infection compared to a randomized control group [30]. In an early meta-analyzes, low to moderate evidence
61 indicated a lacking benefit [31], a later systematic compilation covering more than 35,000 CCP-treated cases indicated
62 a significantly reduced odds ratio for all-cause mortality associated with CCP-transfusion [29]. Thus, outcome
63 observations after CCP therapies are controversial due to the difficulties to form and analyze homogenous patient
64 cohorts and control groups, the diverse availability of other therapeutic modalities and the substantial differences in
65 local clinical practices. Most studies aimed at reducing mortality rates, however, this required a large number of
66 recruited patients and homogenous treatment groups, which was seldom the case. However, quantitative laboratory
67 parameters may serve as secondary endpoints and provide information on individual patients and also on potential
68 patient selection criteria for future studies. Our earlier experience with blood plasma-based therapies has also
69 provided evidence that measuring cytokine levels may be informative in monitoring the effectiveness of blood-based
70 therapies [32,33]. Thus, the aim of the current study to analyze the outcome and immunology parameters after CCP-
71 transfusions in severe COVID-19 patients.

72 **2. Materials and Methods**

73 Study description

74 The trial was designed in accordance with WHO (2015 WHO/HIS/KER/GHE/15.1) as an open-label, prospective,
75 interventional study and approved by the Hungarian National Medical Research Council (approval number:
76 IV/3457/2-2020-EKU) and registered in ClinicalTrials.gov (NCT04345679). Due to ethical concerns of leaving any
77 patient untreated or placebo-treated (e.g., non-convalescent fresh frozen plasma), no control arm was included. The
78 primary clinical endpoint was patient survival, secondary endpoints were the time of convalescent plasma
79 administration (days from hospital admission), the duration of hospital stay (days), the mortality rate (% of patients),
80 the hematological laboratory parameter WBC, and inflammatory markers such as ferritin, C-reactive protein (CRP)
81 and interleukin-6 (IL-6).

82

83 Plasma donation

84 Plasma was collected from healthy voluntary convalescent donors of both sexes aged 18-65 years, with
85 confirmed previous SARS-CoV2 infection. A positive result of either SARS-CoV2 PCR or antigen screening test at the
86 time of plasma donation was a reason for exclusion. Donors were required to meet all eligibility requirements valid

87 for regular blood donors. An inclusion criterion was a positive IgG antibody level (>24 U/ml) against SARS-CoV2
88 nucleocapsid protein (measured by Microgen semi-quantitative ELISA assays). To decrease the risks of TRALI
89 (transfusion-related acute lung injury), all female donors were screened for anti-HLA antibodies, and positive donors
90 were excluded from plasma donation. Altogether 400 ml of convalescent plasma was collected from donors through
91 an automated plasma apheresis separator. The Hungarian National Blood Service divided the 400 ml plasma into two
92 therapeutic doses of 200 ml. Plasma products underwent pathogen reduction and irradiation. The processed plasma
93 was stored at -20°C until used. ABO compatibility was strictly observed throughout the study.

94

95 Recipients

96 Convalescent plasma recipients were hospitalized patients of both sexes and ages admitted to a University
97 hospital COVID ward between April 2020 and February 2021 and who were suitable for receiving plasma judged by
98 their attending physicians.

99

00 Laboratory measurements

01 Laboratory hematological parameters were measured with clinical hematology analyzers. Ferritin and C-
02 reactive protein levels were measured before and on days 1 and 7 after plasma transfusion. White blood cell count
03 was determined before and on days 1 and 2 after plasma transfusion. Levels of the pro-inflammatory cytokine
04 interleukin-6 (IL-6) were measured before and on days 1 and 7 with electrochemiluminescence immunoassay
05 (ECLIA).

06

07

08 Simple Plex cytokine assay

09 IL-1 beta, IL-6, IL-8 and TNF alpha concentrations were analyzed in plasma from 21 selected COVID-19 patients
10 with Simple Plex assays run on the Ella™ automated immunoassay analyzer (ProteinSimple, San Jose, CA). Diluted
11 (1:2) plasma samples together with buffer were loaded into the ELLA cartridge and measured according to the
12 manufacturer's instruction.

13

14 Statistical analysis

15 Data were analyzed with the two-tailed Mann-Whitney test and Fisher's exact test using GraphPad Prism software.
16 P<0.05 was considered significant.

17

18

19 **3. Results**

20

21 3.1 Patient characteristics

22 The key characteristics and laboratory findings of 267 patients can be found in Table 1. Data distribution was spread
23 on a wide scale, demonstrated in histograms of Fig.1. The median of patients' age was 67 years, with a median
24 hospitalization time of 15 days. Over 90% of patients had serious co-morbidities and had markedly elevated
25 inflammatory parameters before CCP-treatment (Table 1). 76% of patients were admitted to the COVID ward (CW)
26 and 24% to the ICU.

27 After comparing patients from CW and ICU a statistical relationship between age, sex, hospitalization time, mortality,
28 WBC, ferritin and CRP level was found. The median age of patients admitted to the ICU was lower (63 years) than
29 that of CW patients (69 years) and 74% of ICU patients were male. As expected, WBC, ferritin and CRP levels on the

30 day of admission were significantly higher in the ICU patient group. Also, ICU patients had longer hospitalization
 31 time but the median number of days to CCP therapy was the same in both groups. No significant association with
 32 CW/ICU admission and the time until CCP therapy, chronic illness and IL-6 level was observed. Since the decision on
 33 whether a patient is treated at the ICU was based on multiple factors partly unrelated to their COVID-19 status, e.g.,
 34 co-morbidities or place availability, and that there was no difference in the treatment regimens regarding plasma
 35 therapy or the inflammatory parameters between the CW and the ICU subgroups, the subsequent analyzes are
 36 presented as a single group of patients.

37

38

39

40

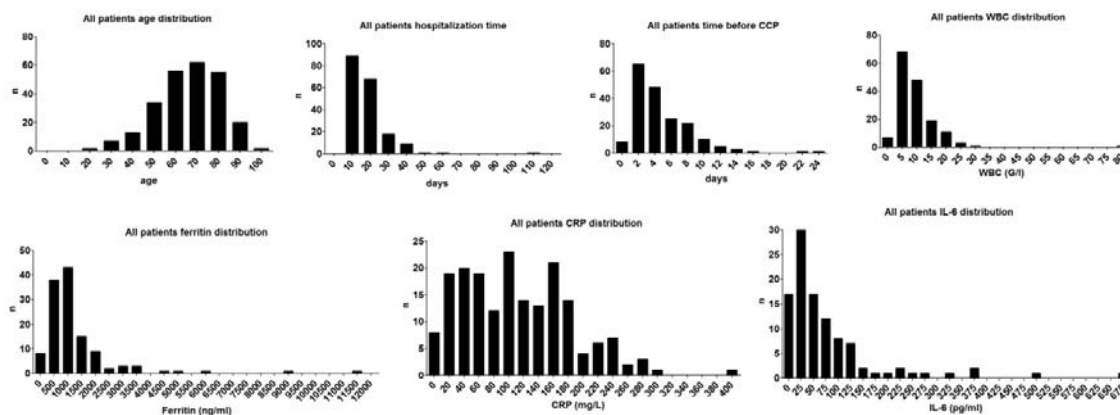
41

42 Table.1 Baseline characteristics of COVID-19 positive patients selected for CCP therapy. Patients' parameters have
 43 been calculated for the whole group (n=267) and for COVID ward and ICU patients. Data were analyzed with Fisher's
 44 exact test.

	All patients n=267	COVID ward (n=202)	ICU (n=65)	P (< 0.05 significant)
Age(years, median)	67	69	63	0,0103
Sex, n (%)	female 40%	female 45%	female 26%	0,0089
	male 60%	male 55%	male 74%	
Hospitalization time (days, median)	15	14	17	0,0202
Time until CCP therapy (days, median)	3	3	3	0,8087, ns
Hypertension, n (%)	63,5%	49,5%	49%	0,2959, ns
Diabetes, n (%)	25,5%	22,3%	12%	0,1833, ns
Cancer active, n (%)	11,5%	10,4%	5,3%	0,3014, ns
Other chronic illness	21,2%	10,5%	6,1%	0,4626, ns
No chronic illness	9,1%	7,4%	6,1%	1, ns
Not known (no documentation about chronic illness)	22,1%	19%	29%	-
Recovered, n (%)	68,5%	77,7%	40%	P<0.0001
Deceased, n (%)	31,5%	22,3%	60%	
WBC (G/l), mean (day 1)	9,8	8,7	13,4	0,0010
Ferritin (ng/ml), mean (day 1)	1296	1026	2121	0,0003
CRP (mg/L), mean (day 1)	111,5	103,7	136,6	0,0090
IL-6 (pg/ml), mean (day1)	77,5	82,68	34,06	0,1452, ns

45

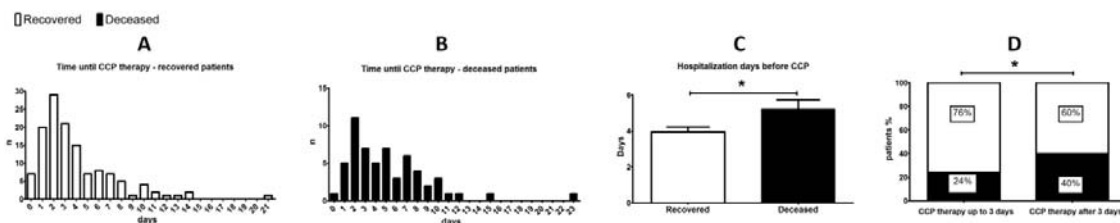
46



47
 48 Fig.1 Histograms presenting the distribution of age, hospitalization time, time before CCP, and the levels of WBC,
 49 ferritin, CRP and IL-6 on day 1. The total number of patients analysed was 267, however, when laboratory tests were
 50 not performed on a given day data was excluded. Documentation about WBC level was available for n=158 patients,
 51 about ferritin for n=126 patients, about CRP for n=187 patients and about IL-6 for n=104 patients. Nonetheless, all
 52 statistical comparisons were adequately powered.

53 3.2 Administration of CCP to COVID patients

54 CCP transfusion was safe with no grade 3 adverse events reported. To identify the best time point when CCP should
 55 be administrated, the hospitalization time before CCP therapy was compared between the deceased and recovered
 56 patients (Fig.2). Frequency distribution analysis revealed that CCP therapy was applied earlier in patients who
 57 eventually recovered than in those who deceased, with a significant difference ($P= 0,0133$) between the time of CCP
 58 therapy between the survivors (3,95 days) and deceased patients (5,22 days) (Fig. 2). Based on this observation, we
 59 regrouped the patients to those who received CCP up to 3 days after hospitalization and compared their survival rate
 60 to those that received CCP at day 4 or later time points in their respective treatment regimes. Indeed, the mortality
 61 rate was significantly lower ($P= 0,0226$) among patients who received CCP up to 3 days after hospital admission (24%)
 62 versus patients who received it later (40%) (Fig. 2).

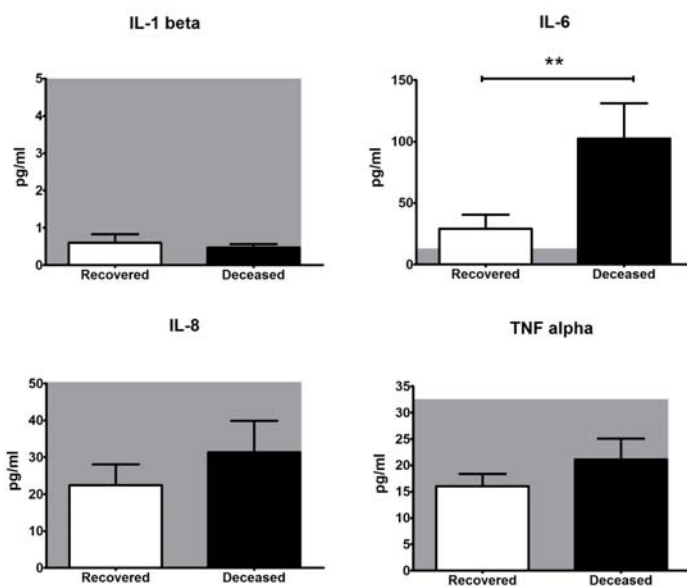


63
 64 Fig.2 Time until CCP therapy in hospitalized patients. Panels A and B show histograms of time until CCP therapy in
 65 days from hospitalization in survivors and decedents, respectively. Panel C shows the mean \pm SEM values of
 66 hospitalization time before CCP for recovered and deceased patients, asterisk indicates $p<0.05$ with Mann-Whitney
 67 test. Panel D shows that patients who received plasma during the first 3 days of hospitalization had a significantly

68 better survival rate than those who received CCP therapy at later timepoints, asterisk indicates $P < 0.05$ with Fisher's
69 exact test.

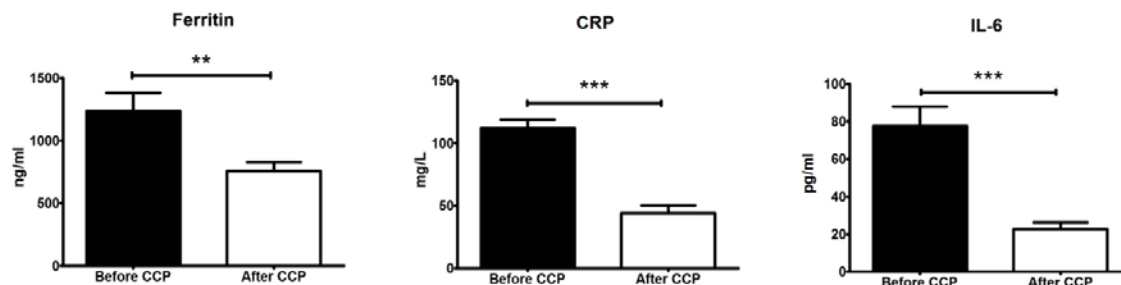
70 3.3 Effect of CCP therapy on inflammatory parameters

71 To identify the reliable prognostic factors for COVID patient's recovery, IL-6, IL-1 beta, IL-8 and TNF alpha was
72 additionally analyzed from the available frozen serum samples of 21 patients (Fig.3). IL-1 beta (deceased 0,5 pg/ml,
73 recovered 0,6 pg/ml), IL-8 (deceased 31,3 pg/ml, recovered 22,5 pg/ml) and TNF alpha concentration (deceased 21,1
74 pg/ml, recovered 16,1 pg/ml), were not above the physiological level (minimum-maximum values of cytokines levels
75 in healthy controls according to the literature are 0,0-5,0 pg/ml for IL-1 beta [34]; 0,0-50,4 pg/ml for IL-8 [35] and
76 0,0-32,5 pg/ml for TNF alpha [35]). Also, the changes of these cytokine levels were not significant between recovered
77 and deceased patients (Fig. 3). At the same time, IL-6 concentration was clearly above the normal level for healthy
78 individuals (0.0-12.7 pg/mL [35]) before plasma therapy and patients who died during hospitalization had
79 significantly higher ($P = 0,0066$) IL-6 levels than survivors (deceased 102,5 pg/ml, recovered 28,9 pg/ml, Fig. 3).



80
81 Fig.3 IL-6, IL-1 beta, IL-8 and TNF alpha levels in survivors and decedents blood harvested before CCP therapy (n=21
82 patients). Normal range is indicated with a greyed area on each panel. Data are represented as average \pm SEM,
83 asterisk indicates $P < 0.05$ with Mann-Whitney's test.

84 The level of ferritin, CRP and IL-6 was compared between blood samples collected before and after CCP therapy to
85 assess if there was an improvement of patients' condition. All three parameters were significantly lower (ferritin $P =$
86 0,0025; CRP and IL-6 $P < 0.0001$) after plasma administration (Fig. 4).



87

88 Fig.4. IL-6, CRP and ferritin levels before and after CCP. Documentation about the ferritin level before and after CCP
89 was available for n= 79 patients, about CRP for n=130 patients and IL-6 for n=58 patients. Data are presented as
90 average \pm SEM, ** indicates $P < 0.01$, *** indicates $P < 0.001$ with Mann-Whitney's test.

91

92

93 4. Discussion

94 In the current study, we systematically monitored selected outcome parameters in a sizeable cohort of severe
95 COVID-19 patients who received CCP therapy as a supplementary intervention besides standard supportive and
96 causative therapies. As expected, several baseline characteristics showed significant differences upon comparing those
97 patients who were treated on the COVID ward versus those under intensive care reflecting the different severity of
98 their overall clinical status. In agreement with other reports [24], males were over-represented in the ICU-subgroup,
99 along with elevated WBC, ferritin and CRP levels. A high proportion of patients had severe co-morbidities that clearly
!00 affected their treatment needs in addition to their COVID19 status, therefore, it is not justified to separate the cohort
!01 into subgroups based on any variable singled out from a multitude of parameters.

!02 We addressed the importance of initiation timepoint of CCP transfusions by using the indicator of number of days
!03 elapsing in the hospital prior to CCP therapy. In such comparison, significantly longer time elapsed in the deceased
!04 subgroup compared to survivors. Moreover, dichotomizing the entire patient group according to the median value of
!05 days until CCP-therapy with 3 days as a threshold, showed significantly higher proportion of deceased patients in the
!06 subgroup characterized by longer than 3 days. Supporting the importance of early application of CCP therapy comes
!07 from a prospective USA study indicating significant mortality reduction compared to matched control cases only in
!08 the subgroup receiving CCP transfusion within 72 hours of hospital admission [20]. In a smaller comparative study
!09 CCP-transfusion within 72 hours from hospital admission was more efficient among patients aged less than 65 years
!10 [19]. In another smaller study a similar benefit of earlier application of CCP-therapy was observed with improvements
!11 of several clinical outcomes associated with CCP-administration before 7 days from diagnosis [26]. Furthermore, in an
!12 outstanding randomized, double-blind, placebo-controlled trial performed in Argentina, development of COVID-19-
!13 associated predefined severe respiratory disease was significantly less frequent in the treated group receiving CCP
!14 transfusion within 72 hours from the onset of mild COVID-19 in an elderly population [30]. The importance of
!15 appropriate timing of CCP-transfusions as well as careful candidate selection instead of the compassionate use of CCP
!16 has clearly been emphasized in an editorial [36].

!17 Considering the relative paucity of information on inflammatory cytokine levels in CCP-treated COVID-19-
!18 patients, in a subgroup of our cohort, we included baseline and follow-up measurements of critical cytokine levels
!19 such as IL-6, IL-8, TNF-alpha and IL-1-beta. Comparing baseline levels between recovered and deceased patients, we
!20 observed that IL-6 was the only inflammatory cytokine characterized by significantly elevated baseline levels among
!21 the deceased CCP-treated patients indicating a potential role of this inflammatory cytokine as a prognostic marker. In

!22 another comparison addressing marker status before and after CCP-transfusion, similarly to general inflammatory
!23 markers, IL-6 levels showed significant decreases. This observation is in line with those of others and suggests a
!24 putative immunomodulatory effect exerted by CCP [11]. In particular, in smaller study, besides IL-6, additionally
!25 TNF-alpha and IFN-gamma levels also showed significant decreases while that of IL-10 increased following CCP-
!26 therapy [37]. In the framework of another randomized trial of CCP therapy, IL-6 serum levels decreased along with
!27 those of interferon gamma induced protein 10 in response to CCP-transfusion [38]. However, it should be noted that,
!28 the possible connection of IL-6 levels with the therapeutic effect of CCP does not mean a causal relationship in either
!29 way, and further studies are needed to identify the molecular-level interactions between IL-6-involving inflammatory
!30 mechanisms. It is also noteworthy that, convalescent plasma is also a source of a number of interleukins and cytokines
!31 that are administered alongside the anti-SARS2-CoV neutralizing antibodies.

!32 Limitations of the current study include its non-controlled design, its limited sample size and partial
!33 unavailability of samples for detailed immunological testing in a significant proportion of the patients included. Pre-
!34 hospital history of the patients was not accessible leaving room for variation in SARS2-CoV2 infection periods. In light
!35 of all the above limitations, we believe that our observations should rather be viewed as an indicator prompting
!36 further studies with improved design targeting special features of CCP therapy such as early intervention in patients
!37 with only moderate IL-6 levels. Comparing results of the large number of registered clinical trials (n=164 on
!38 ClinicalTrials.gov at the time of writing) may help to identify critical factors in study design and patient selection to
!39 obtain benefits of clinical outcome after CCP in severe COVID-19, however, this future effort will depend on original
!40 study data to become available.

!41 In conclusion, our results indicate that CCP transfusion is a safe supplementary option that can easily be
!42 incorporated into the complex therapeutic scheme of severe COVID-19 patients. Early timing of CCP transfusion is
!43 clearly preferable. CCP transfusion resulted in significant decreases in inflammatory markers and pretransfusion
!44 measurements of these markers may allow further stratification of severe COVID-19 patients amenable for efficient
!45 CCP therapy.

!46
!47 **Author Contributions:** Conceptualization, Zsombor Lacza and Eszter Fodor and Olga Kuten.; methodology, Veronika
!48 Müller, validation, Ferenc Jakab, Gábor Kemenesi, Fanni Földes, formal analysis, Ágnes Madár, Mira Ambrus and
!49 Dorottya Kardos; investigation, Zsolt Iványi.; data curation, Eszter Fodor and Attila Tordai, János Nacsá; writing—
!50 original draft preparation, Zsombor Lacza, Olga Kuten; writing—review and editing, supervision, Attila Tordai,
!51 Zsombor Lacza, Eszter Fodor, Tímea Berki; project administration, Árpád Skázel, resources, Sándor Nagy, Andrea
!52 Matusovits, Ágnes Sárkány

!53

!54 **Funding:** This research was funded by the Ministry for Innovation and Technology and the grant numbers are the
!55 following: K135757 and 2020-1.1.6-JÖVŐ-2021-00010. 4

!56 **Institutional Review Board Statement:** The study was conducted according to the guidelines of the Declaration of
!57 Helsinki, and approved by the Hungarian National Ethics Committee (protocol code 1943-6/2020/EÜIG and date of
!58 approval: 2020.04.15).

!59 **Informed Consent Statement:** Informed consent was obtained from all subjects involved in the study.

!60 **Acknowledgments:** This work was partially supported by the Higher Education Institutional Excellence Program
!61 (FIKP) of the Ministry for Innovation and Technology, within the framework of the Molecular Biology thematic
!62 program of the Semmelweis University as well as by grants from the National Research, Development and Innovation
!63 Fund (NKFI) K135757 and 2020-1.1.6-JÖVŐ-2021-00010. We would like to thank you all the donors, who donated
!64 convalescent plasma, and all the nurses, doctors and health care workers who made this treatment possible.

!65 **Conflicts of Interest:** The authors declare no conflict of interest. Zsombor Lacza owns stock in OrthoSera kft, a startup
!66 company developing the hyperacute serum technology towards clinical application.

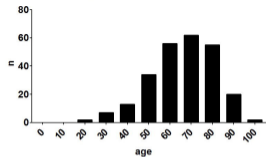
!67 References

- !68 1. Guan W, Ni Z, Hu Y, Liang W, Ou C, He J, et al. Clinical Characteristics of Coronavirus Disease 2019 in China.
!69 N Engl J Med. 2020 Apr 30;382(18):1708–20.
- !70 2. Richardson S, Hirsch JS, Narasimhan M, Crawford JM, McGinn T, Davidson KW, et al. Presenting
!71 Characteristics, Comorbidities, and Outcomes among 5700 Patients Hospitalized with COVID-19 in the New
!72 York City Area. JAMA - J Am Med Assoc. 2020 May 26;323(20):2052–9.
- !73 3. Tordai A, Nagy S, Baróti-Tóth K, Marton I, Lázár M, Demeter J, et al. A SARS-CoV2-járvány hatása a hazai
!74 vérellátásra. Hematológia–Transzfuziológia. 2020 Sep 12;53(2):96–105.
- !75 4. Chen N, Zhou M, Dong X, Qu J, Gong F, Han Y, et al. Epidemiological and clinical characteristics of 99 cases of
!76 2019 novel coronavirus pneumonia in Wuhan, China: a descriptive study. Lancet. 2020 Feb 15;395(10223):507–
!77 13.
- !78 5. Wu Z, McGoogan JM. Characteristics of and Important Lessons from the Coronavirus Disease 2019 (COVID-
!79 19) Outbreak in China: Summary of a Report of 72314 Cases from the Chinese Center for Disease Control and
!80 Prevention. Vol. 323, JAMA - Journal of the American Medical Association. American Medical Association;
!81 2020. p. 1239–42.
- !82 6. Casadevall A, Pirofski LA. The convalescent sera option for containing COVID-19 [Internet]. Vol. 130, Journal
!83 of Clinical Investigation. American Society for Clinical Investigation; 2020. p. 1545–8.
- !84 7. Abraham J. Passive antibody therapy in COVID-19. Vol. 20, Nature Reviews Immunology. Nature Research;
!85 2020. p. 401–3.
- !86 8. Recommendations for Investigational COVID-19 Convalescent Plasma | FDA [Internet].
- !87 9. Tanne JH. Covid-19: FDA approves use of convalescent plasma to treat critically ill patients. BMJ. 2020 Mar
!88 26;368:m1256.
- !89 10. Epstein J, Burnouf T. Points to consider in the preparation and transfusion of COVID-19 convalescent plasma.
!90 Vol. 115, Vox Sanguinis. Blackwell Publishing Ltd; 2020. p. 485–7.
- !91 11. Rojas M, Rodríguez Y, Monsalve DM, Acosta-Ampudia Y, Camacho B, Gallo JE, et al. Convalescent plasma in
!92 Covid-19: Possible mechanisms of action. Vol. 19, Autoimmunity Reviews. Elsevier B.V.; 2020.
- !93 12. Simon M, Major B, Vác G, Kuten O, Hornyák I, Hinsenkamp A, et al. The effects of hyperacute serum on the
!94 elements of the human subchondral bone marrow niche. Stem Cells Int. 2018;2018.
- !95 13. Kardos D, Marschall B, Simon M, Hornyák I, Hinsenkamp A, Kuten O, et al. Investigation of Cytokine
!96 Changes in Osteoarthritic Knee Joint Tissues in Response to Hyperacute Serum Treatment. Cells. 2019 Aug
!97 3;8(8).
- !98 14. Li L, Zhang W, Hu Y, Tong X, Zheng S, Yang J, et al. Effect of Convalescent Plasma Therapy on Time to
!99 Clinical Improvement in Patients with Severe and Life-threatening COVID-19: A Randomized Clinical Trial.
!00 JAMA - J Am Med Assoc. 2020 Aug 4;324(5):460–70.
- !01 15. Agarwal A, Mukherjee A, Kumar G, Chatterjee P, Bhatnagar T, Malhotra P. Convalescent plasma in the
!02 management of moderate covid-19 in adults in India: Open label phase II multicentre randomised controlled
!03 trial (PLACID Trial). BMJ. 2020 Oct 22;371.
- !04 16. Sostin O V., Rajapakse P, Crusier B, Wakefield D, Crusier D, Petrini J. A matched cohort study of convalescent

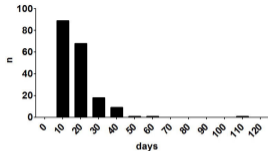
- plasma therapy for COVID-19. *J Clin Apher.* 2021;
17. Simonovich VA, Burgos Pratz LD, Scibona P, Beruto M V., Vallone MG, Vázquez C, et al. A Randomized Trial of Convalescent Plasma in Covid-19 Severe Pneumonia. *N Engl J Med.* 2021 Feb 18;384(7):619–29.
18. Shenoy AG, Hettlinger AZ, Fernandez SJ, Blumenthal J, Baez V. Early mortality benefit with COVID-19 convalescent plasma: a matched control study. *Br J Haematol.* 2021 Feb 1;192(4):706–13.
19. Yoon H, Bartash R, Gendlina I, Rivera J, Nakouzi A, Bortz RH, et al. Treatment of severe COVID-19 with convalescent plasma in Bronx, NYC. *JCI Insight.* 2021 Feb 22;6(4).
20. Salazar E, Christensen PA, Graviss EA, Nguyen DT, Castillo B, Chen J, et al. Treatment of Coronavirus Disease 2019 Patients with Convalescent Plasma Reveals a Signal of Significantly Decreased Mortality. *Am J Pathol.* 2020 Nov 1;190(11):2290–303.
21. Joyner MJ, Senefeld JW, Klassen SA, Mills JR, Johnson PW, Theel ES, et al. Effect of convalescent plasma on mortality among hospitalized patients with COVID-19: Initial three-month experience. *medRxiv*; 2020. p. 2020.08.12.20169359.
22. Duan K, Liu B, Li C, Zhang H, Yu T, Qu J, et al. Effectiveness of convalescent plasma therapy in severe COVID-19 patients. *Proc Natl Acad Sci U S A.* 2020 Apr 28;117(17):9490–6.
23. Xia X, Li K, Wu L, Wang Z, Zhu M, Huang B, et al. Improved clinical symptoms and mortality among patients with severe or critical COVID-19 after convalescent plasma transfusion. *Vol. 136, Blood. American Society of Hematology*; 2020. p. 755–9.
24. Budhiraja S, Dewan A, Aggarwal R, Singh O, Juneja D, Pathak S, et al. Effectiveness of convalescent plasma in Indian patients with COVID-19. *Blood Cells, Mol Dis.* 2021 May 1;88.
25. Tworek A, Jaroń K, Uszyńska-Kałuża B, Rydzewski A, Gil R, Deptała A, et al. Convalescent plasma treatment is associated with lower mortality and better outcomes in high-risk COVID-19 patients – propensity-score matched case-control study. *Int J Infect Dis.* 2021 Apr 1;105:209–15.
26. Moniuszko-Malinowska A, Czupryna P, Zarębska-Michaluk D, Tomaszewicz K, Pancewicz S, Rorat M, et al. Convalescent Plasma Transfusion for the Treatment of COVID-19 – Experience from Poland: A Multicenter Study. *J Clin Med.* 2020 Dec 24;10(1):28.
27. Liu STH, Lin HM, Baine I, Wajnberg A, Gumprecht JP, Rahman F, et al. Convalescent plasma treatment of severe COVID-19: a propensity score-matched control study. *Nat Med.* 2020 Nov 1;26(11):1708–13.
28. Pappa V, Bouchla A, Terpos E, Thomopoulos TP, Rosati M, Stellas D, et al. A phase ii study on the use of convalescent plasma for the treatment of severe covid-19-a propensity score-matched control analysis. *Microorganisms.* 2021 Apr 1;9(4).
29. Klassen SA, Senefeld JW, Johnson PW, Carter RE, Wiggins CC, Shoham S, et al. The Effect of Convalescent Plasma Therapy on COVID-19 Patient Mortality: Systematic Review and Meta-analysis. *Mayo Clin Proc.* 2021 May;96(5).
30. Libster R, Pérez Marc G, Wappner D, Coviello S, Bianchi A, Braem V, et al. Early High-Titer Plasma Therapy to Prevent Severe Covid-19 in Older Adults. *N Engl J Med.* 2021 Feb 18;384(7):610–8.
31. Janiaud P, Axfors C, Schmitt AM, Gloy V, Ebrahimi F, Hepprich M, et al. Association of Convalescent Plasma Treatment with Clinical Outcomes in Patients with COVID-19: A Systematic Review and Meta-analysis. *JAMA - J Am Med Assoc.* 2021 Mar 23;325(12):1185–95.
32. Kardos D, Marschall B, Simon M, Hornyák I, Hinsenkamp A, Kuten O, et al. Investigation of Cytokine

- i45 Changes in Osteoarthritic Knee Joint Tissues in Response to Hyperacute Serum Treatment. *Cells* 2019, Vol 8,
i46 Page 824. 2019 Aug;8(8):824.
- i47 33. Neubauer M, Kuten O, Stotter C, Kramer K, Luna A De, Muellner T, et al. The Effect of Blood-Derived
i48 Products on the Chondrogenic and Osteogenic Differentiation Potential of Adipose-Derived Mesenchymal
i49 Stem Cells Originated from Three Different Locations. *Stem Cells Int.* 2019;2019.
- i50 34. Iglesias Molli AE, Bergonzi MF, Spalvieri MP, Linari MA, Frechtel GD, Cerrone GE. Relationship between the
i51 IL-1 β serum concentration, mRNA levels and rs16944 genotype in the hyperglycemic normalization of T2D
i52 patients. *Sci Rep.* 2020 Dec 1;10(1).
- i53 35. Arican O, Aral M, Sasmaz S, Ciragil P. Serum levels of TNF- α , IFN- γ , IL-6, IL-8, IL-12, IL-17, and IL-18 in
i54 patients with active psoriasis and correlation with disease severity. *Mediators Inflamm.* 2005 Oct
i55 24;2005(5):273–9.
- i56 36. Katz LM. (A Little) Clarity on Convalescent Plasma for Covid-19. *N Engl J Med.* 2021 Feb 18;384(7):666–8.
- i57 37. Pouladzadeh M, Safdarian M, Eshghi P, Abolghasemi H, bavani AG, Sheibani B, et al. A randomized clinical
i58 trial evaluating the immunomodulatory effect of convalescent plasma on COVID-19-related cytokine storm.
i59 *Intern Emerg Med.* 2021 Apr 10;
- i60 38. Bandopadhyay P, Lahiri A, Sarif J, Ray Y, Ranjan Paul S, Roy R, et al. Nature and dimensions of the systemic
i61 hyper-inflammation and its attenuation by convalescent plasma in severe COVID-19.
i62
i63
i64

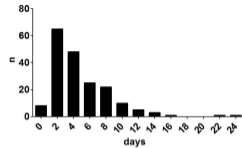
All patients age distribution



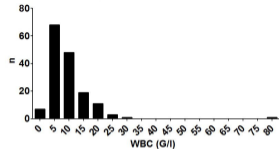
All patients hospitalization time



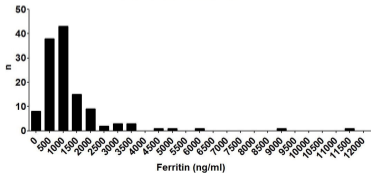
All patients time before CCP



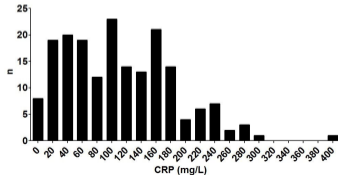
All patients WBC distribution



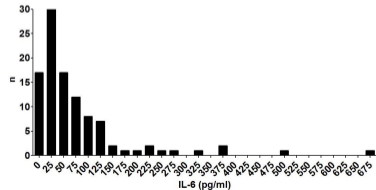
All patients ferritin distribution



All patients CRP distribution



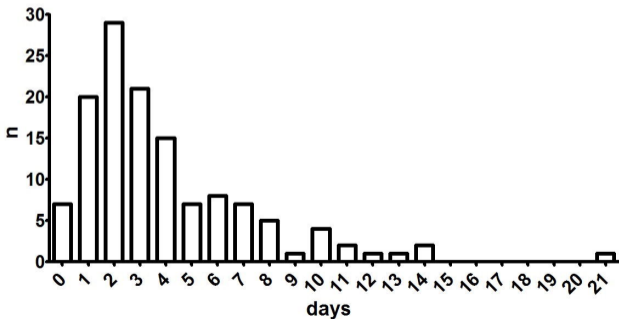
All patients IL-6 distribution



Recovered Deceased

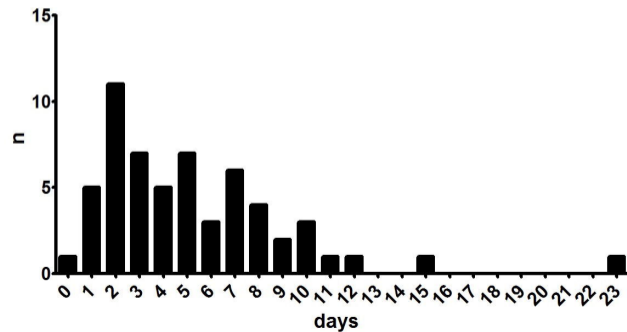
A

Time until CCP therapy - recovered patients



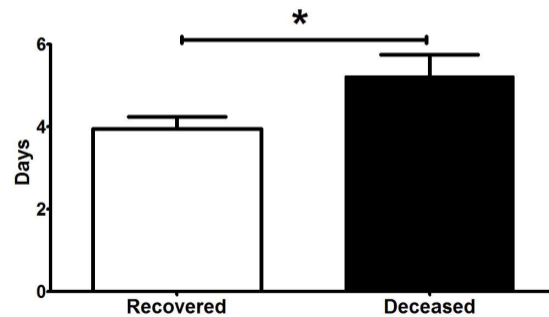
B

Time until CCP therapy - deceased patients

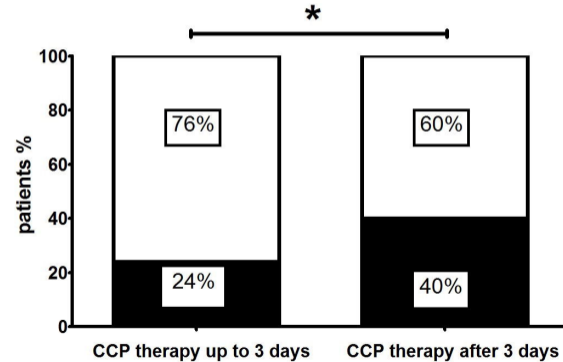


C

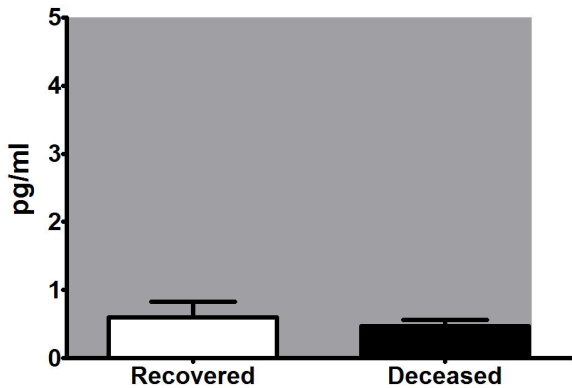
Hospitalization days before CCP



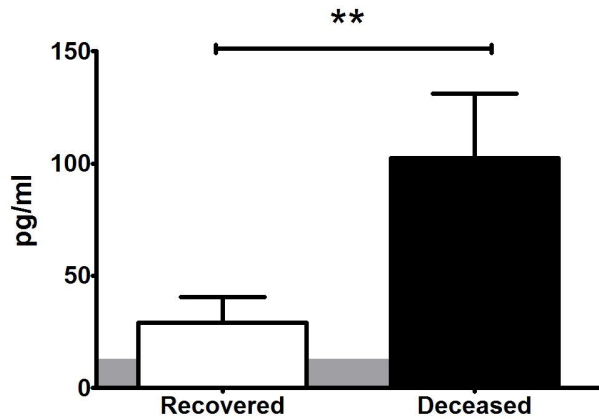
D



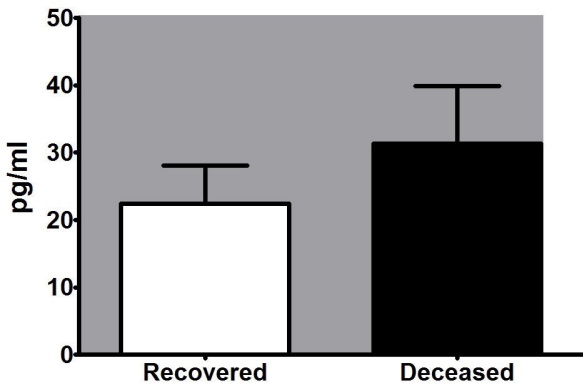
IL-1 beta



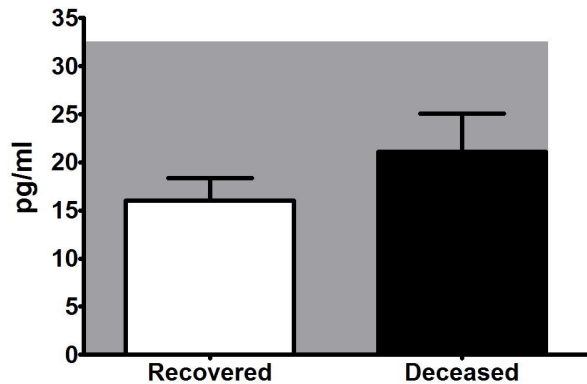
IL-6

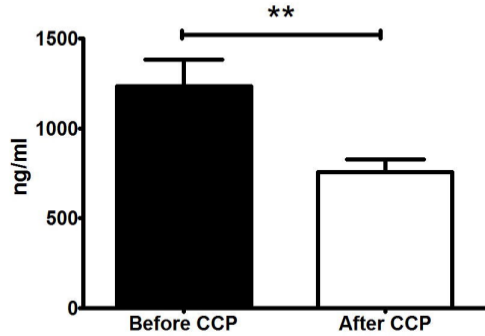
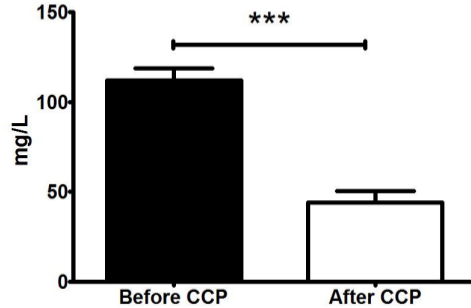
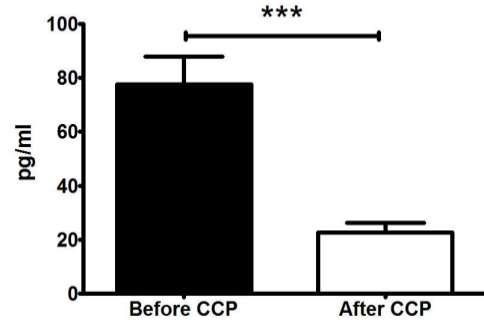


IL-8



TNF alpha



Ferritin**CRP****IL-6**

	All patients n=267	COVID ward (n=202)	ICU (n=65)	P (< 0.05 significant)
Age(years, median)	67	69	63	0,0103
Sex, n (%)	female 40%	female 45%	female 26%	0,0089
	male 60%	male 55%	male 74%	
Hospitalization time (days, median)	15	14	17	0,0202
Time until CCP therapy (days, median)	3	3	3	0,8087, ns
Hypertension, n (%)	63,5%	49,5%	49%	0,2959, ns
Diabetes, n (%)	25,5%	22,3%	12%	0,1833, ns
Cancer active, n (%)	11,5%	10,4%	5,3%	0,3014, ns
Other chronic illness	21,2%	10,5%	6,1%	0,4626, ns
No chronic illness	9,1%	7,4%	6,1%	1, ns
Not known (no documentation about chronic illness)	22,1%	19%	29%	-
Recovered, n (%)	68,5%	77,7%	40%	P<0.0001
Deceased, n (%)	31,5%	22,3%	60%	
WBC (G/l), mean (day 1)	9,8	8,7	13,4	0,0010
Ferritin (ng/ml), mean (day 1)	1296	1026	2121	0,0003
CRP (mg/L), mean (day 1)	111,5	103,7	136,6	0,0090
IL-6 (pg/ml), mean (day1)	77,5	82.68	34.06	0,1452, ns