

Development of a quantitative antigen assay to detect coccidioidal chitinase-1 (CTS1) in human serum

Running title: Quantitative coccidioidal CTS1 assay

Francisca J. Grill^a, Thomas E. Grys^b, Marie F. Grill^c, Alexa Roeder^a, Janis E. Blair^d, Douglas F. Lake^{a#}

^aSchool of Life Sciences, Arizona State University, Tempe, AZ, USA

^bDepartment of Laboratory Medicine and Pathology, Mayo Clinic, Phoenix, AZ, USA

^cDepartment of Neurology, Mayo Clinic, Phoenix, AZ, USA

^dDivision of Infectious Diseases, Mayo Clinic, Phoenix, AZ, USA

#Correspondence to: Douglas F. Lake, douglas.lake@asu.edu

Key words: Valley Fever, coccidioidomycosis, diagnostic, ELISA

Summary (limit 40): Diagnosis of coccidioidomycosis often relies on the host's ability to mount an immune response. Here we present an antigen-based assay that detects and quantifies coccidioidal chitinase-1 in human serum to diagnose coccidioidomycosis independent of host immune status.

1 Abstract

2 **Background.** Coccidioidomycosis is often diagnosed with a collection of tests that rely on the
3 patient's ability to mount an immune response to the fungus (antibody-based diagnostics),
4 making diagnosis of this infection challenging. Here we present an antigen-based assay that
5 detects and quantifies coccidioidal chitinase-1 (CTS1) in human serum.

6 **Methods.** An inhibition-based enzyme-linked immunoassay (ELISA) was developed that utilizes
7 a monoclonal antibody specific for coccidioidal CTS1. CTS1 was quantified in commercial
8 antigen preparations using recombinant CTS1 as a standard. Sera from 192 individuals from an
9 endemic area were tested which included 78 patients (40.6%) with proven or probable
10 coccidioidomycosis.

11 **Results.** The quantity of CTS1 in diagnostic commercial antigen preparations from different
12 suppliers varied. CTS1 antigenemia was detected in 87.2% of patients with proven or probable
13 coccidioidomycosis. Specificity was determined to be 96.94% using serum from individuals who
14 reside in the Phoenix, Arizona area who did not have coccidioidomycosis. Levels of CTS1
15 correlated with low- and high-titer serology from patients with a coccidioidomycosis diagnosis.

16 **Conclusions.** Since the CTS1 inhibition ELISA described in this report does not depend on the
17 host immune response, it is a promising diagnostic tool to aid in diagnosis and disease
18 monitoring of coccidioidomycosis.

19

20 Introduction

21 Coccidioidomycosis, or Valley Fever (VF), is an infection caused by the pathogenic fungi
22 *Coccidioides immitis* and *Coccidioides posadasii* which are nearly identical in their morphology
23 and physiology[1]. *Coccidioides* spp. are present in the southwestern and western United
24 States, northern Mexico, and small areas in Central and South America[2–4]. In 2018, over
25 15,000 cases of VF were reported in the United States with a majority in Arizona and California,
26 both of which have experienced a significant increase in incidence since 2014[5–7]. Infection

27 may be asymptomatic or manifest as a pneumonia difficult to distinguish from community-
28 acquired viral or bacterial pneumonia which may lead to inappropriate treatment[8,9]. In a small
29 but significant number of cases, extra-pulmonary dissemination of the fungus occurs resulting in
30 significant morbidity, need for long-term antifungal therapy, and sometimes in death[10,11].

31 *Coccidioides* spp. are dimorphic fungi that exist in two forms dependent on their
32 environment, growing as a spherule (yeast) form in vertebrate hosts and septate mycelia in the
33 desert soil. Under dry conditions in the environment, spore-like arthroconidia form, become
34 easily aerosolized, and are inhaled into the lungs of a human or animal host, where the fungus
35 transforms into the spherule growth form. As spherules grow in the host, endospores form
36 inside, increasing the size of the spherules. Spherules then rupture and release hundreds of
37 endospores, each capable of developing into a new spherule that undergoes the same
38 process[12]. Chitin has been shown to be a major component in the cell wall of spherules[13]
39 and its presence increases significantly during the beginning of the endosporulation process,
40 likely as a result of an upregulation of chitin synthases[14]. This surge in chitin production is
41 then diminished with the progression of endospore formation and release, at which time
42 chitinases are detectable[10,14]. Two chitinase (CTS) genes, *cts1* and *cts2*, have been
43 characterized and the product of the former, CTS1, is a 48-kDa protein that plays a role in
44 weakening the spherule cell wall prior to endospore release[15–17]. In culture, the presence of
45 CTS1 is shown to decrease shortly after endosporulation due to an upregulation of
46 proteases[10,18], so the process of spherule growth and endosporulation can restart. CTS1 is
47 also known as the “CF” antigen used in serodiagnostics, namely complement fixation (CF)
48 assays and its immunodiffusion correspondent (IDCF)[16,17]. It has since been produced
49 recombinantly by several groups, and truncations of CTS1 have been explored to map antibody-
50 binding sites to increase sensitivity and specificity for detecting antibodies to *Coccidioides* in
51 patients[19–23].

52 Even though the CTS1/CF antigen system is commonly used in antibody-based
53 diagnostics it can take weeks to months after onset of symptoms to detect an immune
54 response, which may be further delayed or even absent in immunocompromised patients[24].
55 Currently, a constellation of diagnostic assays and clinical findings are utilized to diagnose VF.
56 Serologic tests that detect patient antibodies to *Coccidioides* spp. antigens are the most widely
57 used and include enzyme immunoassays (EIA), immunodiffusion (ID) and complement fixation
58 (CF)[25]. EIA and ID utilize reagents that can distinguish between IgM and IgG antibodies, while
59 CF antigen is used to quantify the antibody response and measure disease progression and/or
60 resolution[9,26]. The sensitivity and specificity of these assays in diagnosis have been
61 evaluated by multiple groups[24,27–32], and although helpful, the sensitivity of serology is still
62 lacking, especially in early infection and in immunosuppressed individuals[24]. Specificity can
63 also be a problem. As disease resolves, the antibodies detected by clinical assays wane.
64 Alternatively there may be complete resolution of the fungus, with a long period of detectable
65 antibody, or incomplete resolution (latent infection), with continued detection of antibodies.
66 Unlike many serologic assays for infectious diseases, IgG is not a marker of distant infection,
67 but could represent recent or latent infection[31]. Thus, while serology continues to be a
68 mainstay diagnostic tool, it is an incomplete and imperfect approach. Morphological and growth-
69 based diagnostics such as microscopy and culture, respectively, exist. However, these methods
70 are also lacking in sensitivity and the latter poses a risk to laboratory personnel despite being
71 considered the gold-standard of diagnosis[9,33]. Polymerase chain reaction (PCR) has also
72 been explored, however it demonstrates a sensitivity similar to that of culture[34,35]. This
73 experience has therefore highlighted the need for a sensitive antigen-based diagnostic test that
74 detects and/or measures direct biomarkers from *Coccidioides* spp. as opposed to a patient
75 response. The use of EIA for detection of coccidioidal antigens has been approached previously
76 using spherule lysate[36], and more recently using galactomannan[37]. No follow up evaluations
77 of the former have been explored, but the latter has shown value in diagnosing more severe-

78 forms of disease such as coccidioidal meningitis[37,38]. A recent publication affirmed the
79 modest incremental value of performing the *Coccidioides* galactomannan antigen assay, though
80 the assay was positive for only a minority of non-disseminated cases[32].

81 In this report, we describe a new enzyme-linked immunoassay (ELISA) that measures
82 coccidioidal CTS1. Evaluation of this assay included measuring levels of CTS1 in commercial
83 antigen preparations and testing 192 serum samples from individuals residing in an endemic
84 area (Phoenix, AZ). The inhibition ELISA demonstrated 96.94% specificity and 87.18%
85 sensitivity when compared to an algorithm that includes histology, culture, clinical symptoms,
86 radiographic and serologic findings. However, since the assay is not dependent on the host
87 immune response, the ability to detect the presence of fungal antigen in serum could provide a
88 definitive diagnosis for patients suspected of having coccidioidomycosis.

89

90 **Methods**

91 Production and purification of recombinant CTS1

92 The CTS1 gene was provided to us as a kind gift from Dr. Mitch Magee (Arizona State
93 University). We cloned CTS1 into pcDNA3.1 V5/HisA, verified its identity by sequence analysis
94 (supplemental Figure 1) and transfected it into 293F cells (Thermo Freestyle Expression
95 System). Seven-day supernatants were harvested and recombinant CTS1 (rCTS1) was purified
96 on a nickel column via a C-terminal histidine tag. Purified protein was quantified using a BCA
97 protein assay kit (Thermo Scientific) and frozen at -80°C in 250ul aliquots at 1 mg/ml.

98

99 Monoclonal antibody generation and purification

100 Mice were immunized and boosted with rCTS1 mixed with Magic Mouse Adjuvant
101 (Creative Diagnostics) under an IACUC approved protocol at Mayo Clinic. Anti-CTS1 antibody
102 titers were monitored by rCTS-1-coated 96-well plates. When a sufficient antibody titer was
103 reached (>1:32,000), mice were sacrificed and spleens were processed into single cell

104 suspensions. Splenocytes were fused with myeloma cells (P3X63Ag8.653) by a standard
105 hybridoma generation technique[39]. Briefly, splenocytes were fused with P3X63Ag8.653
106 myeloma cells at a ratio of 1 splenocyte: 2 myeloma cells using 50% PEG (Sigma-Aldrich). The
107 fused cells were resuspended in hypoxanthine-aminopterin-thymidine (HAT) selective medium
108 (Sigma-Aldrich) and plated at 50,000 splenocytes per well in a 96-well plate. Plates were
109 incubated at 37°C with 5% CO₂ for ten days. Supernatant was collected and tested by indirect
110 ELISA for antibodies against rCTS1. Positive wells were subcloned by limiting dilution of one
111 cell per well and re-screened using the same procedure after ten days. Positive subclones were
112 cultured in 10% FBS cDMEM for antibody purification by protein A/G (Thermo Scientific)
113 chromatography. Multiple mAbs against rCTS1 were identified, but one in particular, 2F11,
114 performed well in our inhibition assay.

115

116 Western blot

117 rCTS1 was either treated with PNGaseF or untreated and subjected to SDS-PAGE
118 under reducing conditions using 12% polyacrylamide gels at 140 V for 60 minutes (Bio-Rad)
119 followed by staining with Coomassie Blue dye. For Western blot analysis, electrophoresed
120 proteins were transferred to a PVDF membrane using a western blot apparatus (Bio-Rad). After
121 transfer, membranes were blocked in 1% BSA for at least one hour followed by incubation with
122 anti-CTS1 mouse monoclonal antibody 2F11 at 2 ug/ml in 1% BSA in PBS for 1 hour.
123 Membranes were then washed three times with tris-buffered saline, 0.1% Tween-20 (TBST)
124 followed by addition of peroxidase-conjugated goat anti-mouse IgG antibody (Jackson
125 ImmunoResearch) at a dilution of 1:5000 for 45 minutes. Membranes were subsequently
126 washed four times with TBST followed by addition of NBT/BCIP (Thermo Scientific) substrate
127 for development.

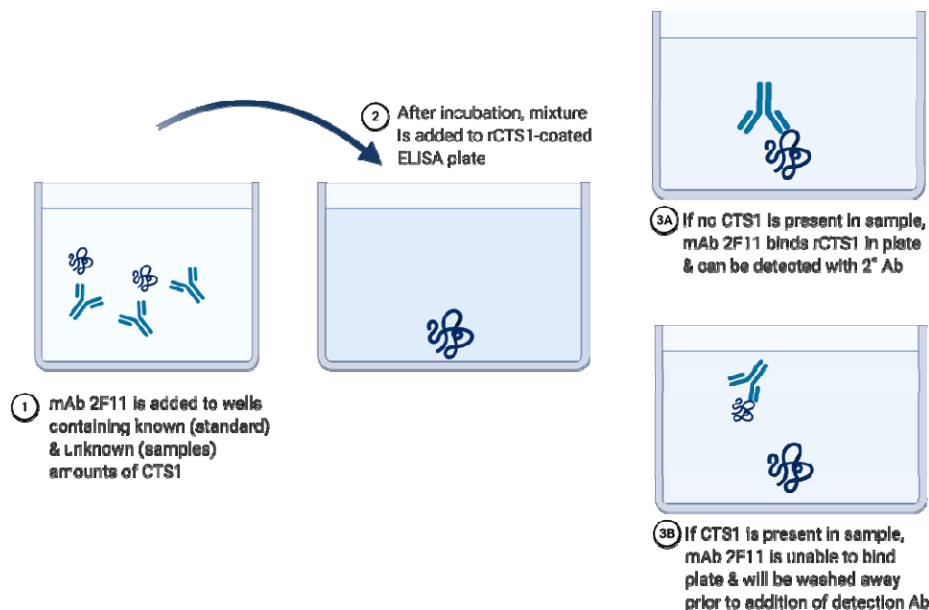
128

129 Inhibition ELISA

130 The first step of the inhibition assay requires pre-incubating a biofluid potentially
131 containing *Coccidioides*-produced CTS1 with a calibrated concentration of 2F11 anti-CTS1
132 mAb. Then, the solution is transferred to rCTS1-coated ELISA plates (Figure 1). A sample that
133 does not contain any CTS1 would result in 2F11 mAb binding to rCTS1 coated on the plate,
134 whereas a sample containing CTS1 would have already bound some or all of the 2F11 mAb,
135 inhibiting 2F11 mAb from binding to plate-bound rCTS1. A standard of rCTS1 was run with each
136 test so that CTS1 in the biofluid could be compared at an appropriate dilution along the linear
137 portion of the standard curve.

138 Commercial antigen preparations and human sera were tested undiluted and at 2-fold
139 dilutions in 1% BSA. The assay was performed using a 96-well flat bottom plate (Corning)
140 coated with rCTS1 at 2ug/ml for 75 minutes at 37°C followed by blocking overnight in 1% BSA in
141 1X PBS at 4°C. The following day, rCTS1 standard was spiked in a 96-well U-bottom plate
142 (Corning) at a known concentration (16 ug/ml) into 1% BSA or normal donor serum followed by
143 ten 2-fold dilutions into 1% BSA. Biotinylated 2F11 mAb was added to either commercial
144 antigen preparations or sera at an equal volume such that the final concentration of 2F11 was
145 0.1 ug/ml, final dilution of standard 8ug/ml, and final dilution of samples 2-fold greater than
146 starting dilution (e.g., starting dilution of 1:2 became 1:4). Samples were mixed by gently
147 tapping the 96-well U-bottom plates followed by incubation at room temperature for one hour.
148 Samples were then transferred to rCTS1-coated ELISA plates and incubated an additional hour.
149 ELISA plates were then washed three times with 1X PBS, 0.05% Tween-20 (PBST), followed by
150 addition of Streptavidin-HRP (BD Biosciences) at a dilution of 1:5000 and incubated for 45
151 minutes. The plates were washed three times in PBST, then developed with TMB substrate (BD
152 Biosciences) for ten minutes. Sulfuric acid 0.16M was added to stop development and the plate
153 was read at 450nm.

154



155

156 *Figure 1: Diagram of inhibition assay used for quantification of CTS1. Biotinylated monoclonal antibody 2F11 is*
157 *incubated with patient serum at different dilutions for one hour. After incubation, mixture is added to an ELISA plate*
158 *that has been coated with rCTS1 and allowed to incubate. If CTS1 is present in the sample being tested, it will block*
159 *the antibody from being able to bind rCTS1 in the ELISA plate, generating low signal. If CTS1 is not present, the*
160 *antibody will bind rCTS1 in the ELISA plate, generating high signal. Schematic was created with BioRender.com.*

161

162 Assay limits and precision

163 A standard curve for quantification of CTS1 was generated by spiking a known
164 concentration of rCTS1 into either 1% BSA or normal donor serum followed by two-fold dilutions
165 into 1% BSA. The limit of blank (LOB) and limit of detection (LOD) were determined by
166 measuring the standard curve in triplicate. The LOB was calculated by taking the mean OD
167 value of triplicate blank samples and subtracting 1.645 times their standard deviation[40].
168 Subtraction instead of addition of standard deviation was used due to the reverse nature of our
169 standard curve (low optical density corresponds to high concentration of CTS1 while high optical
170 density corresponds to low concentration of CTS1). The LOD was determined by using the LOB

171 and replicates of the CTS1 standard with concentrations that approached the LOB with the
172 following equation: $LOD = LOB - 1.645(SD_{\text{low concentration sample}})$ [40]. Once again, subtraction of SD
173 was utilized in place of addition due to the reverse nature of our standard curve. The LOD
174 optical density value was then back calculated to a concentration of CTS1 to account for minor
175 day-to-day variation. This process was repeated across three days for both rCTS1 spiked into
176 1% BSA and normal donor serum, with dilutions into 1% BSA. The average LOD concentration
177 is reported. The back-calculated concentrations from these replicates were used to calculate
178 intra- and inter-assay precision of the CTS1 standard (supplemental Table 1).

179

180 Clinical specimens

181 Human sera were obtained under ASU IRB 0601000548 and Mayo Clinic IRB 12-
182 000965. All samples with at least one *Coccidioides*-related diagnostic test were collected
183 between May-September 2018 and stored $<-20^{\circ}\text{C}$ until use. Samples were tested in dilution
184 replicates of 1:2 - 1:32. If dilution replicate did not allow for quantification within the assay limits,
185 samples were re-tested at higher dilutions. The status of each patient at time of sampling was
186 categorized as “Proven”, “Probable”, “Possible”, or “not coccidioidomycosis” using European
187 Organization for Research and Treatment of Cancer (EORTC) criteria for endemic mycoses,
188 with clarifying criteria for Probable and Possible, based on our published clinical composite
189 reference standard[31,41]. Briefly, patients who had *Coccidioides* identified by culture,
190 histopathology, or PCR were classified as Proven. Patients with concurrent clinical findings
191 (including either radiology findings[31] or symptoms[31]) along with positive serology
192 (antibodies) for *Coccidioides* were classified as Probable. Our group classified anyone with
193 either relevant clinical findings or positive serology, but not both, as possible
194 coccidioidomycosis, however there is not a clear consensus about what criteria must be met for
195 this classification[41]. Since the true nature of the Possible category cannot be known, these
196 patients were excluded from the sensitivity and specificity analysis. Any patient who did not

197 have Proven, Probable, or Possible coccidioidomycosis, or was diagnosed with a different
198 illness, was classified as Not Coccidioidomycosis.

199

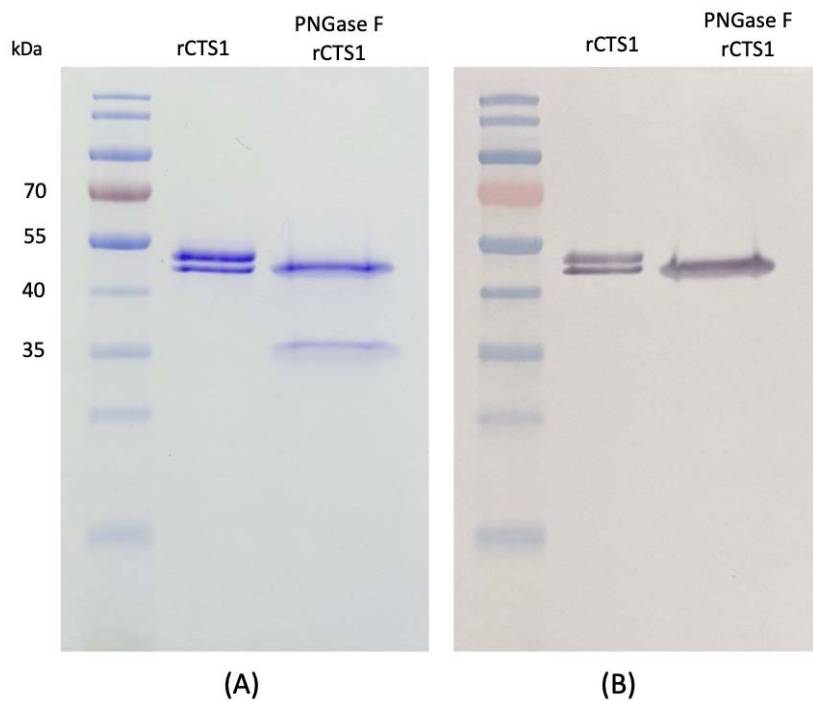
200 Statistical analysis

201 Receiver operating characteristic analysis was used to determine the cutoff for positivity as
202 well as estimate sensitivity and specificity. Samples with OD values below the LOD were
203 assigned a value of 0 ug/ml for statistical analysis.

204

205 Results

206 Recombinant CTS1 was electrophoresed with and without pre-treatment with PNGase F
207 (Figure 2A). rCTS1 appears as a doublet band, which is presumed to be a glycosylation since
208 rCTS1 appears as a single band after deglycosylation with PNGase F (~35 kDa). Although
209 multiple mAbs were identified from anti-CTS1-secreting mouse hybridomas, one mAb in
210 particular, 2F11, demonstrated binding in both ELISA and western blotting. A western blot of
211 2F11 reacting with rCTS1 is shown in Figure 2B. This antibody was used to develop the
212 inhibition assay. Dilutions of rCTS1 were used in an empirical approach to establish the limit of
213 blank, which was then used to calculate the limit of detection of *Coccidioides* rCTS1, 155 ng/ml
214 (SD 0.022 µg/ml).



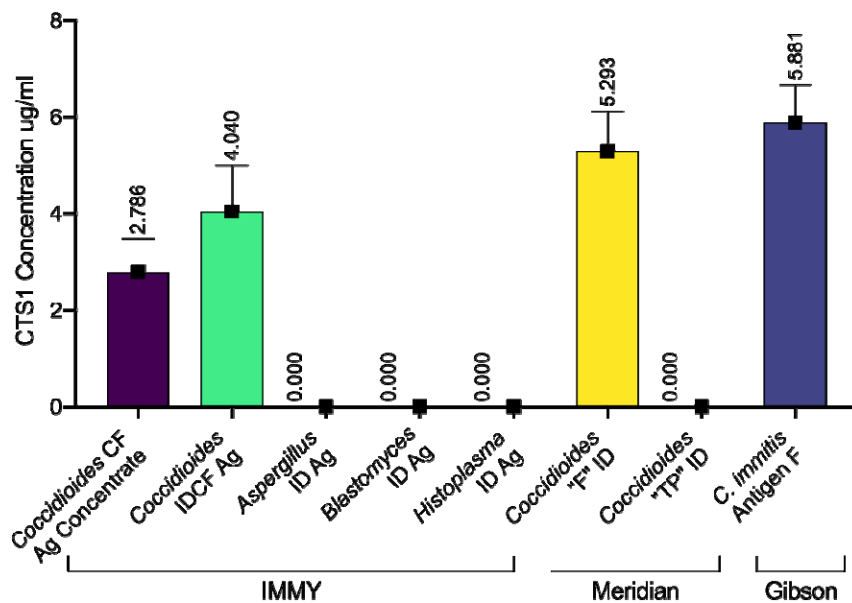
215

216 *Figure 2. (A) Coomassie blue-stained SDS-PAGE of rCTS1 and PNGase F-treated rCTS1. (B) Western blot probed*
217 *with 2F11 mAb.*

218

219 The first step of characterizing the assay was to test it against commercially available
220 antigen preparations. These included *Coccidioides* CF Antigen Concentrate (IMMY, Norman,
221 OK), *Coccidioides* IDCF Antigen (IMMY, Norman, OK), *Coccidioides* "F" Antigen for
222 Immunodiffusion (Meridian Biosciences, Cincinnati, OH), *Coccidioides immitis* Antigen F
223 (Gibson Bioscience, Lexington, KY). The quantity of CTS1 in each was 2.79 ug/ml, 4.04 ug/ml,
224 5.29 ug/ml, and 5.88 ug/ml, respectively (Figure 3). Commercially available antigen preparations
225 for *Aspergillus*, *Blastomyces*, and *Histoplasma* ID assays (IMMY, Norman, OK) were also
226 tested, but no CTS1 was detected in non-coccidioidal antigen preparations, demonstrating the
227 specificity of 2F11 mAb (Figure 3).

228



229

230 *Figure 3. Quantification of CTS1 in different commercially available antigen preparations used in fungal diagnostics.*

231 *Brackets at the bottom designate manufacturers of each antigen preparation. For values below 0.155 ug/ml (the*
232 *analytical limit of detection), the assigned value was zero.*

233

234 These initial findings led us to investigate if CTS1 was detectable in patient serum using
235 the same inhibition ELISA format. We tested 192 pre-existing serum samples from patients who
236 had at least one coccidioidomycosis-related diagnostic test performed. Patients were classified
237 as Proven, Probable, Possible, or Not Coccidioidomycosis, based on EORTC criteria[41] and
238 refined based on our previously described clinical schema[31]. Seventy-eight (40.6%) patients
239 had Proven or Probable coccidioidomycosis, 16 (8.3%) had Possible coccidioidomycosis, and
240 the remaining 98 (51.0%) did not have coccidioidomycosis (Figure 4A). Of the 98 samples
241 classified as Not Coccidioidomycosis, 9 (4.7%) were diagnosed with a different fungal infection
242 (*Aspergillus* n=6, *Candida* n=3), further demonstrating specificity of the assay against these
243 filamentous and yeast form fungi. The mean concentration of CTS1 in dilution replicates for all
244 samples tested is shown in Figure 4B and 4C. Of the 78 patients with Proven or Probable

245 coccidioidomycosis, 51 had a positive complement fixation titer ranging from 1:2 to 1:256. The
 246 quantity of CTS1 detected in these patients in relation to CF titer is shown in Figure 4D.

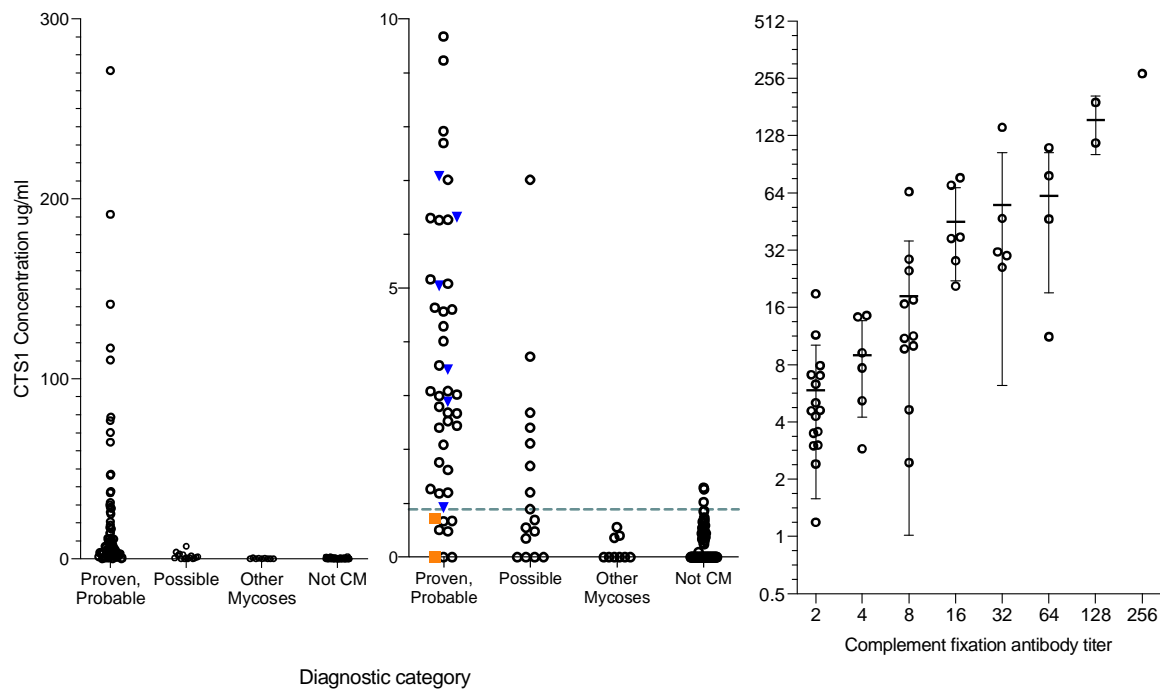
247

248 (A)

Diagnostic category	Description	Sample size
Proven	Confirmed by culture, microscopy, or histopathology	14
Probable	Clinical findings* AND positive serology**	64
Possible	Clinical findings* OR positive serology**	16
Not coccidioidomycosis	Negative serology, illness or diagnosis of different disease	98
Total		192

249 *Findings are defined as radiology findings[31] and/or symptoms[31].

250 **Serology is defined as positive CF, ID (IgG or IgM), or IgG by EIA.



251

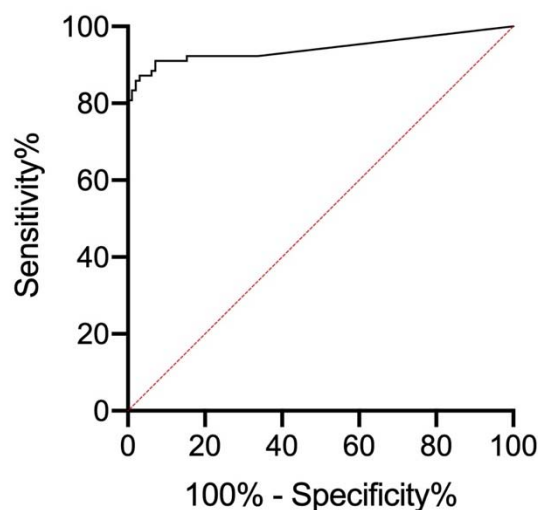
(B)

(C)

(D)

252 *Figure 4. (A) Composition of serum samples tested and sorted by diagnosis category. (B) Concentration of CTS1*
253 *detected in all patient serum tested, separated by diagnostic category. Because a high concentration of CTS1*
254 *was detected in some patients, (C) displays data using a scale of 0-10 ug/ml for better visualization of distribution*
255 *of concentrations. Blue inverted triangles represent patients with Proven diagnosis, while orange squares*
256 *indicate patients with Proven coccidioidomycosis whose disease appeared to be resolved at time of specimen*
257 *collection (no symptoms and negative serology, see supplemental Table 2). A dotted line represents the cutoff*
258 *value for positivity at 0.90 ug/ml. (D) Correlation of CTS-1 levels with serologic antibody titers determined by*
259 *complement fixation. Individual dots show quantity of CTS1 determined by ELISA in 51 patients with a positive*
260 *complement fixation titer (grouped by CF titer on x-axis). Average quantity by titer is represented with a line, with*
261 *error bars illustrating standard deviation (with the exception of CF titer 256 group, which only included 1 patient).*
262

263 A receiver operating characteristic curve (ROC) was plotted using patients with Positive or
264 Probable coccidioidomycosis as true positives and Not Coccidioidomycosis patients as true
265 negatives (Figure 5) while excluding the Possible group, as their status is unknown. The area
266 under the receiver operating characteristic curve was 0.9428 (SE, 0.02137; 95%CI, 0.9009-
267 0.9847; $P < 0.0001$) using a positive cutoff value of 0.90 ug/ml, resulting in a sensitivity and
268 specificity of 87.18% and 96.94%, respectively.
269



270

271 *Figure 5. Receiver operating characteristic (ROC) plot for CTS1 quantification for the diagnosis of*
272 *coccidioidomycosis. Patients with proven and probable coccidioidomycosis represent the true positive group*
273 *while patients categorized as not coccidioidomycosis make up the true negative group. Patients classified as*
274 *possible coccidioidomycosis were excluded from this analysis. The area under the curve (AUC) was 0.9428 (SE,*
275 *0.02137; 95% CI, 0.9009-0.9847; $P < 0.0001$). With a cutoff concentration of 0.90 ug/ml, the sensitivity is 87.18%*
276 *and the specificity is 96.94%.*

277

278 Discussion:

279 Current diagnostic methods for coccidioidomycosis rely on a constellation of clinical,
280 radiologic and laboratory findings that are often conflicting and inconsistent. However, their
281 collective use is the current accepted standard used to inform clinical decisions, and often
282 repeated testing over time is needed to clarify patient status. Further complicating diagnosis is
283 that early treatment of coccidioidomycosis can abrogate seroconversion[42], which can make
284 definitive diagnosis nearly impossible in some patients with other co-morbidities that have
285 overlapping symptoms. Various CTS1 antigen preparations have been used in antibody-based
286 diagnostic assays for over six decades. Although CTS1 may be an accepted serologic target,
287 antibody responses in individuals infected with *Coccidioides* spp. are often delayed or even
288 absent, especially in immunocompromised patients[24]. However, if a fungal antigen could be
289 detected in a biofluid, a definitive diagnosis could be made, independent of the host immune
290 response.

291 To begin construction of the antigen detection assay, we first generated mouse mAbs to
292 rCTS1. During screening, mAb 2F11 was particularly notable because it bound both soluble and
293 plate-bound rCTS1, making it an ideal antibody for an inhibition ELISA. Conditions were
294 established and optimized for the inhibition assay diagrammed in Figure 1 in which a biofluid
295 (serum or commercial antigen preparation) potentially containing coccidioidal CTS1 was pre-
296 incubated with biotinylated mAb 2F11. The quantity of CTS1 in the biofluid proportionally

297 inhibited the binding of mAb 2F11 to the rCTS1-coated plate as quantified using a standard
298 curve generated with known concentrations of rCTS1.

299 Complexity and inconsistency in the current diagnostic testing regimen make evaluation
300 of a new diagnostic tool challenging. Several groups have proposed criteria to classify patients
301 with varying certainties of coccidioidomycosis infection to aid with this challenge. We opted to
302 categorize the patients included in this study using the general definitions offered by the EORTC
303 and the Mycoses Study Group[41] who provide criteria for proven and probable
304 coccidioidomycosis, but acknowledge disagreement about the parameters of “possible” disease,
305 Therefore, we included additional detail to define probable and possible based on our previous
306 work[31]. Lastly, we excluded patients categorized as possible from our sensitivity and
307 specificity analysis, since their true status is unknown. The results show that the use of our
308 antigen EIA provides sensitivity and specificity comparable only to the use of multiple existing
309 serodiagnostic tests[24,31,32] with the added advantage of detecting elements of the fungus
310 itself rather than a host response to infection. The test we describe could allow for earlier
311 diagnosis, which is crucial for proper management of patients. Some patients take many weeks
312 to become antibody-positive[24] and are given one or more courses of unnecessary antibiotics,
313 posing risk for patients and contributing to antimicrobial resistance.

314 Another use of this assay is to measure the CTS1 present in antigen preparations, and
315 potential lot to lot variability. While the relative amounts of CTS1 between commercial products
316 is somewhat irrelevant, it is essential to have consistent reagents for diagnostic methods.
317 Importantly, *Histoplasma* and *Blastomyces* antigen ID preparations from IMMY did not cross-
318 react on our assay, demonstrating a critical feature of analytical specificity of the assay. Nine
319 patients had other fungal infections and were negative by the assay, suggesting that the assay
320 has good clinical specificity. More samples from patients with other fungal infections will need to
321 be tested to further characterize clinical specificity of the assay.

322 We must also acknowledge that the samples tested in this study are a single point in
323 time from individuals at different stages of disease with a wide range in time since diagnosis,
324 time since treatment initiation, and/or time since symptom resolution. In some cases, the course
325 of disease led to evidence that would categorize the patient as a proven case. We categorized
326 patient samples with information available at the time of blood draw. Additional context from
327 future events is available in Supplemental Table 2 for thirty patients. In one example, Patient 3
328 was characterized as Probable due to innumerable pulmonary nodules and positive serology by
329 CF (1:2), ID, and EIA. The patient's serum contained 7.086 ug/mL of CTS1 antigen at that time.
330 The patient was initiated on antifungal treatment 4-5 weeks later, however 11 months later
331 returned a positive PCR, confirming proven infection. It would be difficult to know whether this
332 patient was sufficiently treated, given this presentation. With our assay, trending of antigenemia
333 may correlate with clinical response and/or response to treatment. To investigate this possibility,
334 we plan to test samples longitudinally with close correlation to clinical symptoms and other
335 diagnostic tests.

336 The one other antigen assay described for *Coccidioides* was recently shown to be
337 positive in only 38.6% of sera from immunocompetent patients, and only 37.1% of pulmonary
338 cases[32]. That assay is also positive more often in disseminated cases, which typically have
339 other indicators of infection already. The assay reported here has the potential for similar or
340 better performance versus any single antibody assay or combination of antibody assays, and
341 has the distinct advantage of directly measuring concentrations of fungal antigen in a blood
342 sample. Although additional prospective studies are needed to further evaluate and define the
343 role of this test in the clinical laboratory, it may hold promise as a useful diagnostic tool for a
344 disease that can be challenging to diagnose.

345

346 Funding

347 This work was supported by the Arizona Biomedical Research Commission [ADHS16-162513]
348 and the Mayo Clinic Center for Individualized Medicine

349

350 Acknowledgements

351 We would like to thank the Mayo Clinic Department of Laboratory Medicine and Pathology for
352 their support in acquiring samples to use in this study.

353 *Author contributions.*

354 Francisca J. Grill: Investigation, Methodology, Data Collection, Retrospective Chart Review,
355 Writing – Original Draft and Editing

356 Thomas E. Grys: Conceptualization, Methodology – Sample Classification, Resources, Writing –
357 Reviewing and Editing

358 Marie F. Grill: Methodology – Sample Classification, Writing – Reviewing and Editing

359 Alexa J. Roeder: Sample Collection, Retrospective Chart Review

360 Janis E. Blair: Methodology – Sample Classification, Writing – Reviewing and Editing

361 Douglas F. Lake: Conceptualization, Methodology, Resources, Supervision, Writing –
362 Reviewing and Editing

363

364 *Potential conflicts of interest.*

365 All authors: no reported conflicts of interest.

366

367 References

- 368 1. Fisher MC, Koenig GL, White TJ, Taylor JW. Molecular and Phenotypic Description of
369 *Coccidioides posadasii* sp . nov., Previously Recognized as the Non-California Population
370 of *Coccidioides immitis* Stable. *Mycologia*. **2002**; 94(1):73–84.
- 371 2. Hector RF, Laniado-Laborin R. Coccidioidomycosis- A fungal disease of the Americas.
372 *PLoS Med*. **2005**; 2(1):0015–0018.

- 373 3. Saubolle MA, McKellar PP, Sussland D. Epidemiologic, clinical, and diagnostic aspects of
374 coccidioidomycosis. *J Clin Microbiol.* **2007**; 45(1):26–30.
- 375 4. Stewart ER, Thompson GR. Update on the Epidemiology of Coccidioidomycosis. *Curr*
376 *Fungal Infect Rep. Current Fungal Infection Reports*; **2016**; 10(4):141–146.
- 377 5. Centers for Disease Control and Prevention. Valley Fever (Coccidioidomycosis) Statistics
378 [Internet]. [cited 2020 Mar 2]. Available from:
379 <https://www.cdc.gov/fungal/diseases/coccidioidomycosis/statistics.html>
- 380 6. Wilson L, Ting J, Lin H, et al. The rise of valley fever: Prevalence and cost burden of
381 coccidioidomycosis infection in California. *Int J Environ Res Public Health.* **2019**; 16(7).
- 382 7. Grizzle AJ, Wilson L, Nix DE, Galgiani JN. Clinical and Economic Burden of Valley Fever
383 in Arizona: An Incidence-Based Cost-of-Illness Analysis. *Open Forum Infect Dis.* **2021**;
384 8(2):1–9.
- 385 8. Blair JE, Chang YHH, Cheng MR, et al. Characteristics of patients with mild to moderate
386 primary pulmonary coccidioidomycosis. *Emerg Infect Dis.* **2014**; 20(6):983–990.
- 387 9. Malo J, Luraschi-Monjagatta C, Wolk DM, Thompson R, Hage CA, Knox KS. Update on
388 the diagnosis of pulmonary coccidioidomycosis. *Ann Am Thorac Soc.* **2014**; 11(2):243–
389 253.
- 390 10. Pappagianis D, Zimmer BL. Serology of coccidioidomycosis. *Clin Microbiol Rev.* **1990**;
391 3(3):247–268.
- 392 11. Adam RD, Elliott SP, Taljanovic MS. The Spectrum and Presentation of Disseminated
393 Coccidioidomycosis. *Am J Med. Elsevier Inc.*; **2009**; 122(8):770–777.
- 394 12. Nguyen C, Barker BM, Hoover S, et al. Recent advances in our understanding of the
395 environmental, epidemiological, immunological, and clinical dimensions of
396 Coccidioidomycosis. *Clin Microbiol Rev.* **2013**; 26(3):505–525.
- 397 13. Hector RF, Pappagianis D. Enzymatic degradation of the walls of spherules of
398 *Coccidioides immitis*. *Exp Mycol.* **1982**; 6(2):136–152.

- 399 14. Cole GT, Hung CY. The parasitic cell wall of *Coccidioides immitis*. *Med Mycol Suppl.*
400 **2001**; 39(1):31–40.
- 401 15. Johnson SM, Zimmermann CR, Pappagianis D. Amino-terminal sequence analysis of the
402 *Coccidioides immitis* chitinase/immunodiffusion-complement fixation protein. *Infect*
403 *Immun.* **1993**; 61(7):3090–3092.
- 404 16. Pishko EJ, Kirkland TN, Cole GT. Isolation and characterization of two chitinase-encoding
405 genes (cts1, cts2) from the fungus *Coccidioides immitis*. *Pathology.* **1995**; 167:173–177.
- 406 17. Johnson SM, Pappagianis D. The coccidioidal complement fixation and immunodiffusion-
407 complement fixation antigen is a chitinase. *Infect Immun.* **1992**; 60(7):2588–2592.
- 408 18. Resnick S, Pappagianis D, McKerrow JH. Proteinase production by the parasitic cycle of
409 the pathogenic fungus *Coccidioides immitis*. *Infect Immun.* **1987**; 55(11):2807–2815.
- 410 19. Zhu Y, Yang C, Magee DM, Cox RA. Molecular cloning and characterization of
411 *Coccidioides immitis* antigen 2 cDNA. *Infect Immun.* **1996**; 64(7):2695–2699.
- 412 20. Zimmermann RC, Johnson SM, Martens GW, White AG, Pappagianis D. Cloning and
413 expression of the complement fixation antigen-chitinase of *Coccidioides immitis*. *Infect*
414 *Immun.* **1996**; 64(12):4967–4975.
- 415 21. Yang MC, Magee DM, Cox RA. Mapping of a *Coccidioides immitis*-specific epitope that
416 reacts with complement-fixing antibody. *Infect Immun.* **1997**; 65(10):4068–4074.
- 417 22. Peng T, Zong Y, Johnson MD, Menghani S V., Lewis ML, Galgiani JN. A quantitative
418 enzyme-linked immunoassay (ELISA) to approximate complement-fixing antibody titers in
419 serum from patients with coccidioidomycosis. *Diagn Microbiol Infect Dis.* Elsevier Inc.;
420 **2021**; 99(1):115198.
- 421 23. Johnson SM, Zimmermann CR, Pappagianis D. Use of a recombinant *Coccidioides*
422 *immitis* complement fixation antigen- chitinase in conventional serological assays. *J Clin*
423 *Microbiol.* **1996**; 34(12):3160–3164.
- 424 24. Blair JE, Coakley B, Santelli AC, Hentz JG, Wengenack NL. Serologic testing for

- 425 symptomatic coccidioidomycosis in immunocompetent and immunosuppressed hosts.
426 *Mycopathologia*. **2006**; 162(5):317–324.
- 427 25. Ampel NM. The diagnosis of coccidioidomycosis. *F1000 Med Rep*. **2010**; 2(1):8–11.
- 428 26. McHardy IH, Dinh BTN, Waldman S, et al. Coccidioidomycosis complement fixation titer
429 trends in the age of antifungals. *J Clin Microbiol*. **2018**; 56(12):1–11.
- 430 27. Johnson JE, Jeffery B, Huppert M. Evaluation of five commercially available
431 immunodiffusion kits for detection of *Coccidioides immitis* and *Histoplasma capsulatum*
432 antibodies. *J Clin Microbiol*. **1984**; 20(3):530–532.
- 433 28. Kaufman L, Sekhon AS, Moledina N, Jalbert M, Pappagianis D. Comparative evaluation
434 of commercial premier EIA and microimmunodiffusion and complement fixation tests for
435 *Coccidioides immitis* antibodies. *J Clin Microbiol*. **1995**; 33(3):618–619.
- 436 29. Lindsley MD, Ahn Y, McCotter O, et al. Evaluation of the specificity of two enzyme
437 immunoassays for coccidioidomycosis by using sera from a region of endemicity and a
438 region of nonendemicity. *Clin Vaccine Immunol*. **2015**; 22(10):1090–1095.
- 439 30. Kirsch EJ, Greene RT, Prah A, et al. Evaluation of *Coccidioides* antigen detection in
440 dogs with coccidioidomycosis. *Clin Vaccine Immunol*. **2012**; 19(3):343–345.
- 441 31. Grys TE, Brighton A, Chang YH, Liesman R, LaSalle CB, Blair JE. Comparison of two
442 FDA-cleared EIA assays for the detection of *Coccidioides* antibodies against a composite
443 clinical standard. *Med Mycol*. **2019**; 57(5):595–600.
- 444 32. Kassis C, Durkin M, Holbrook E, Myers R, Wheat L. Advances in Diagnosis of
445 Progressive Pulmonary and Disseminated Coccidioidomycosis. *Clin Infect Dis*. **2021**;
446 72(6):968–975.
- 447 33. DiTomasso JP, Ampel NM, Sobonya RE, Bloom JW. Bronchoscopic diagnosis of
448 pulmonary coccidioidomycosis comparison of cytology, culture, and transbronchial
449 biopsy. *Diagn Microbiol Infect Dis*. **1994**; 18(2):83–87.
- 450 34. Vucicevic D, Blair JE, Binnicker MJ, et al. The utility of *Coccidioides* polymerase chain

- 451 reaction testing in the clinical setting. *Mycopathologia*. **2010**; 170(5):345–351.
- 452 35. Binnicker MJ, Buckwalter SP, Eisberner JJ, et al. Detection of *Coccidioides* species in
453 clinical specimens by real-time PCR. *J Clin Microbiol*. **2007**; 45(1):173–178.
- 454 36. Galgiani JN, Grace GM, Lundergan LL. New Serologic Tests for Early Detection of
455 *Coccidioidomycosis*. *J Infect Dis*. **1991**; 163(3):671–674.
- 456 37. Durkin M, Connolly P, Kuberski T, et al. Diagnosis of *Coccidioidomycosis* with Use of the
457 *Coccidioides* Antigen Enzyme Immunoassay. *Clin Infect Dis*. **2008**; 47(8):e69–e73.
- 458 38. Kassis C, Zaidi S, Kuberski T, et al. Role of *Coccidioides* Antigen Testing in the
459 Cerebrospinal Fluid for the Diagnosis of *Coccidioidal* Meningitis. *Clin Infect Dis*. **2015**;
460 61(10):1521–1526.
- 461 39. Köhler G, Milstein C. Continuous cultures of fused cells secreting antibody of predefined
462 specificity. *Nature*. **1975**; 256:495–497.
- 463 40. Armbruster DA, Pry T. Limit of Blank , Limit of Detection and Limit of Quantitation. *Clin*
464 *Biochem Rev*. **2008**; 29(Suppl 1):S49-52.
- 465 41. Peter Donnelly J, Chen SC, Kauffman CA, et al. Revision and update of the consensus
466 definitions of invasive fungal disease from the european organization for research and
467 treatment of cancer and the mycoses study group education and research consortium.
468 *Clin Infect Dis*. **2020**; 71(6):1367–1376.
- 469 42. Thompson GR, Lunetta JM, Johnson SM, et al. Early treatment with fluconazole may
470 abrogate the development of IgG antibodies in *coccidioidomycosis*. *Clin Infect Dis*. **2011**;
471 53(6).
- 472