

Cost-effectiveness of whole area testing of asymptomatic SARS-CoV-2 infections in Merthyr Tydfil, 2020: A Modelling and economic analysis

Mark Drakesmith^{1,□}, Brendan Collins^{2,3}, Angela Jones⁴, Kelechi Nnoaham⁴, and Daniel Rh. Thomas^{1,5}

¹ Communicable Disease Surveillance Centre, Public Health Wales, Cardiff, Wales, UK

² Health and Social Services Group, Welsh Government, Cardiff, Wales, UK

³ Department of Public Health, Policy and Systems, University of Liverpool, Liverpool, England, UK

⁴ Cwm Taf Morgannwg University Health Board, Abercynon, Rhondda Cynon Taf, Wales, UK

⁵ School of Health Sciences, Cardiff Metropolitan University, Cardiff, Wales, UK

□ Correspondence: [Mark Drakesmith <mark.drakesmith@wales.nhs.uk>](mailto:mark.drakesmith@wales.nhs.uk)

Summary

What is already known on this topic

- As part of the UK nations' strategies for controlling COVID-19, mass testing by lateral flow devices (LFD) has been widely used to identify asymptomatic SARS-CoV-2 infections in the community and thus reduce prevalence
- This approach has proved controversial with concerns expressed about sensitivity and predictive positive value of the LFD, and about whether their use in mass testing programmes is a cost effective way of controlling COVID-19
- Merthyr Tydfil Borough has had some of the highest rates of SARS-CoV-2 infection in the United Kingdom, and a mass asymptomatic testing pilot was introduced in an attempt to reduce community transmission.
- The cost of mass testing with LFD has been predicted to be high, but there are little data indicating effectiveness or cost-effectiveness in terms of healthcare costs averted and quality life years (QALYs) gained.

What this study adds

- We estimate that during the mass testing pilot in Merthyr Tydfil a significant number of cases, hospitalisations and deaths, that would otherwise have occurred, were prevented.
- This may have contributed to a subsequent decline in disease burden in the area in early 2021
- In high prevalence settings, mass testing by LFD appears to be highly cost effective when considering healthcare costs averted and QALYs gained.

Abstract

Objectives

To evaluate the cost effectiveness of an asymptomatic SARS-CoV-2 whole area testing pilot.

Design

Epidemiological modelling and cost effectiveness analysis.

Setting

The community of Merthyr Tydfil County Borough between 20 Nov and 21 Dec 2020.

Participants

A total of 33,822 people tested as part of the pilot in Merthyr Tydfil County Borough, 712 of whom tested positive by lateral flow test and reported being asymptomatic.

Main outcome measures

Estimated number of cases, hospitalisations, ICU admissions and deaths prevented, and associated costs per quality-adjusted life years (QALYs) gained and monetary cost to the healthcare system.

Results

An initial conservative estimate of 360 (95% CI: 311 - 418) cases were prevented by the mass testing, representing a would-be reduction of 11% of all cases diagnosed in Merthyr Tydfil residents during the same period. Modelling healthcare burden estimates that 24 (16 - 36) hospitalizations, 5 (3 - 6) ICU admissions and 15 (11 - 20) deaths were prevented, representing 6.37%, 11.1% and 8.19%, respectively of the actual counts during the same period. A less conservative, best-case scenario predicts a much higher number of cases prevented of 2328 (1761 - 3107), representing 80% reduction in would-be cases. Cost effectiveness analysis indicates 108 (80 - 143) QALYs gained, an incremental cost ratio of £2,143 (£860-£4,175) per QALY gained and net monetary benefit of £6.2m (£4.5m-£8.4m). In the less conservative scenario, the net monetary benefit increases to £15.9m (£12.3m-£20.5m).

Conclusions

A significant number of cases, hospitalisations and deaths were prevented by the mass testing pilot. Considering QALYs lost and healthcare costs avoided, the pilot was cost-effective. These findings suggest mass testing with LFDs in areas of high prevalence (>2%) is likely to provide significant public health benefit. It is not yet clear whether similar benefits will be obtained in low prevalence settings.

Introduction

The aim of mass community SARS-CoV-2 (COVID-19) testing by lateral flow device (LFD) tests is to provide a significant and sustainable reduction in the prevalence of infection in an area. By offering testing to the whole community, it is possible to identify asymptomatic infections that would not otherwise be detected.

Through prompt isolation and contact tracing of these newly identified asymptomatic or pre-symptomatic individuals, community transmission may be reduced. The LFD test is advantageous because of its speed and ease of deployment to large populations, compared to the PCR test. LFD testing is deemed particularly beneficial for groups that are more likely to be asymptomatic, such as children and students, or for key workers who are in regular contact with vulnerable individuals. Asymptomatic testing is currently being rolled out across the UK [1].

Prior to national roll out, pilots were conducted in Liverpool [2] and later in the Merthyr Tydfil and the Lower Cynon Valley area of South Wales during November to December 2020 [3]. Merthyr Tydfil had, at the time, one of the highest incidence rates of COVID-19 in the UK along with associated illness and deaths (248.6 cases per 100,000 in the first week of the pilot [4]). The Welsh Index of Multiple Deprivation shows that Merthyr Tydfil has some of the most deprived areas in Wales [5]. In addition, smoking rates are high in both areas in comparison to the health board and the Welsh average, and there are high levels of overweight and obesity and higher prevalence of long term conditions, all factors associated with poor COVID-19 outcomes [5].

The LFD test has been criticised for its poor sensitivity. Initial reports from the Liverpool pilot reported the true positive rate of LFD tests was 99.9%, but a false negative rate of 48.9% [6]. A recent study of LFD tests in UK university students found sensitivity was estimate the sensitivity can be as low as 3% [7]. The sensitivity of the test is highly dependent on the expertise of who the test is administered by [8]. LFD tests sensitivity is significantly influenced by viral load [7]. Viral load peaks in asymptomatic cases are lower than for symptomatic cases, affecting the usefulness of LFDs as a screening tool. Furthermore, the false sense of reassurance a negative test result could provide may lead to more risky behaviours and reduced adherence to social distancing and lockdown restrictions. Clear information regarding the low sensitivity of LFD tests is not always readily available to the public [9]. Consequently, the use of LFD mass testing as a screening tool has provoked controversy in the medical community and the media [10]. It has been argued that mass testing with LFD devices is not cost effective, with one estimate of the cost of detecting a single asymptomatic case by LFD mass testing as much as £30,000 [12]. However, such estimates do not take into account the potential costs saved in terms healthcare burden and quality life years lost though onward transmission that would have occurred had mass testing not identified these cases.

In the present study, we assess the impact of the whole area testing pilot in Merthyr Tydfil by modelling the number of onward infections prevented using the reproduction number (R_t) in Merthyr Tydfil at the time and applying a series of assumptions on the natural history of the infection and the performance of the test. These estimates are then applied to a time-lagged regression model to estimate the number of hospitalizations, ICU admissions and deaths that would have arisen from the prevented cases. We also perform sensitivity analysis on some parameters that underlie the assumptions made in the analysis and derived estimates from likely worst-case and best-case scenarios. Finally, the cost effectiveness, in terms of incremental cost effectiveness ratio (ICER) per QALY gained is estimated.

Method

Study design

Modelling and economic analysis, using original data collected as part of a mass testing pilot.

Data privacy and information governance

This analysis was carried out as part of our ongoing epidemic response; and as such this activity is covered by Public Health Wales' Establishment Order; and the Covid-19 privacy statement.

Sample data

Lateral flow device (LFD) tests, using the INNOVA SARS-CoV-2 Rapid Antigen test, were performed as part of the whole area testing pilot that took place between 21st November 2020 and 20th December 2020 in Merthyr Tydfil and lower Cynon Valley. Testing was offered to individuals aged 11 or over, living or working in the area and who were not experiencing symptoms of COVID infection at the time of testing. Full details of the pilot are provided in [3]. For ease, the present analysis was restricted to Merthyr Tydfil only as this is a whole self-contained local authority, whereas lower Cynon Valley comprises a sub-region of the Rhondda Cynon Taf local authority. Of 48,834 tests that took place during the pilot, 33,822 were taken at one of 14 test centres in Merthyr Tydfil (see Table 1). Of these, 712 positive LFD tests who reported being asymptomatic were used for the analysis. This represents 2.1% of tests performed.

Analysis

Estimates of cases prevented

All analysis was carried out using R software. Assumptions made in estimating cases prevented are given in Box 1. LFD positive asymptomatic cases during the testing period were counted for each day. From this, the number of LFD positive tests that were confirmed by a PCR test, either on-site or by an independent test no more than 14 days later, were counted. From this number, the number of true positives were estimated. Firstly we identified all LFD test positives with a confirmatory PCR test result (classified as true positives). Secondly, we estimated the number of true positives in those who did not have a confirmatory PCR test from the positive predictive value (PPV) of the LFD test (0.98). This was estimated from the proportion of LFD positives that had follow-up PCR (541), that were confirmed true positives (530).

A proportion of asymptomatic cases will go on to develop COVID-19 symptoms. The number expected to remain asymptomatic was estimated by scaling the number of true positives by the proportion of asymptomatic cases that did not reported having symptoms when interviewed coincidentally as part of a case-control study that took place during the testing pilot. from 198 LFD positive results, 87 (44%) reported symptoms when followed up [13]. Asymptomatic infections are assumed to not self-isolate and therefore will contribute fully to the next generation of infections. A small proportion of secondary infections (0.2) were assumed for symptomatic cases, resulting from infectious contact made prior to onset of symptoms or as a failure of self-isolation. The sum of these two count constitutes the initial set of cases identified though the testing pilot but not directly prevented (also referred to as 0th generation infections). The process for obtaining this count is visualised in the flowchart in Figure 1.

From the initial set of cases, the 1st generation infections that would have occurred from these cases is estimated by multiplying by the reproduction number (R_t - mean and 95% CI) for that day by the number true positive LFD test cases (Figure 3). A scaling factor of 0.58 is also applied to take into account the relative reduction of infectability of asymptomatic cases compared to symptomatic cases [14]. The daily reproduction number R_t was estimated using the "EpiEstim" R package [15] based on actual PCR-tested case counts in Merthyr Tydfil local authority area.

The number of subsequent (2nd and higher generation) infections were estimated by iteratively multiplying the estimated R_t by the estimated number of prevented infections from the previous day, each time scaling the number of cases from the previous generation by the proportions of asymptomatic and symptomatic-

infectious cases, and scaling the asymptomatic portion by the relative infectability of asymptomatic cases, as done for the 0th generation.

The number of infections estimated prevented for a given day is the sum of the 1st generation and 2nd and higher generation infections. 0th generation infections are excluded from this sum as they occurred before the LFD test and therefore cannot be considered preventable.

The number of infections estimated for a given day is then distributed over an infection window of 14 days, which has a log-normal distribution ($\mu=1.63$, $\sigma=0.5$), with a median of 5 days. The parameters for this distribution were taken from the meta-analysis of [16]. For 1st generation infections (infections arising direct from the LFD positive cases) the infectious period is assumed to be centred around the LFD test date, to take into account the likely delay between the date of infection and the date of the LFD test. Only the infectious period after the LFD test date is considered as any new infections generated before the LFD test would not have been prevented. For 2nd and higher generation infections, the whole infection window is considered and the start of the infection window is the date the infection is seeded. A flowchart depicting this process is shown in Figure 2 and a mathematical description is given in the appendix.

The proportion of symptomatic cases that contribute to new infections was estimated from contact tracing data (restricted to the period of the mass testing exercise and to the Merthyr Tydfil local authority area). The contacts for all cases that reported symptoms were cross referenced to identify those that also have a PCR-confirmed positive test result. The proportion of contacts of symptomatic cases that were themselves identified had a positive test results was 0.2.

Some of the parameters underlying the assumptions of the analysis have a high degree of uncertainty. Three parameters were highlighted for sensitivity analysis and used to produce worst-case and best-case scenarios for the number of cases prevented (see Appendix B for details). These additional scenarios were included in the subsequent analyses.

Box 1: Assumptions of the analysis

A summary of the assumptions underlying the model is provided below.

1. All infected persons are equally infectious irrespective of age, gender, demographic variables, etc.
2. Infectability of asymptomatic cases are 58% of symptomatic cases [12].
3. The number of infections created by an infectious person is determined by the R_t value on the day of their LFD positive test result.
4. The daily count of new infections arising from infectious persons is a fixed Log Normal distribution with a median of 5 days and up to 14 days long [14].
5. An infectious person became infectious 5 days before the LFD positive test result and up to 9 days after (14 days in total). Only infections taking place after the LFD positive test are considered preventable.
6. All infected persons not exhibiting symptoms will not self-isolate, therefore will contribute to subsequent infections.
7. Most persons exhibiting symptoms will self-isolate, but some will still contribute to secondary transmission (each symptomatic case will contribute 0.2 secondary cases in contacts).
8. The proportion of positive cases that will develop symptoms remains constant (0.44) [15].
9. All cases reported asymptomatic are truly asymptomatic.
10. All positive LFD tests with confirmatory PCR test are true positives.
11. Of the positive LFD tests without confirmatory PCR test, a fixed proportion will be true positives (0.98)

Estimates of healthcare burdens prevented

The estimated number of cases prevented were further used to predict three healthcare outcomes: Hospitalisations, ICU admissions and deaths. A time-lagged log-linear regression model was trained on corresponding surveillance data for residents of Merthyr Tydfil Local Authority [4]. Separate models were built for each healthcare outcome with multiple lagged case counts treated as the predictor variables and the burden measure as the outcome measure. Hospitalisation data were restricted to those where a positive PCR test was obtained no later than 2 days after admission. This rules out likely nosocomial infections, as opposed to those that are community-acquired. All data were log transformed and smoothed with a LOESS filter (span = 0.2). Models are built from time-lagged case counts with delays of 12-50, 24-50 and 30-50 days for hospitalizations, ICU admissions and death, respectively. These lag ranges were determined to be optimal by testing multiple lag windows of 1-50 days and comparing the AIC/BIC values.

The estimated number of cases prevented computed in the previous section were then fed into the model to predict daily counts of each healthcare burden prevented. The counts are then summed across all days modelled to obtain a final count of each healthcare burden.

Economic analysis

Standard cost effectiveness analysis (sometimes called cost utility analysis) methods were used [17]. There have been several attempts to attach costs to COVID-19 outcomes [18]. For this work, we used a 'bottom up' method using Wales-specific medical costs and intervention costs collected as part of the mass testing pilot. The cases and associated hospital burdens were multiplied by estimated costs and QALYs lost. This was done for the main estimate and the best- and worst- case scenarios derived from the previous sensitivity analysis. The QALY losses from COVID-19 cases included cases, deaths, hospital admissions and a conservative (low) estimate of the lost QALYs from long COVID-19. The programme costs for the mass testing pilot in Merthyr

Tydfil were estimated as £515,688 [3]. Costs were measured in GBP, at 2020 prices. QALYs lost from COVID-19 deaths were discounted at 1.5% per annum in line with UK Treasury Green Book. Other costs and QALYs were not discounted as they were assumed to occur within-year. Table 4 shows the estimated outcomes and unit costs and QALYs for each outcome. No costs were assumed for cases that do not end in hospital or dying.

Further details of the cost and QALY estimates are provided below.

COVID-19 community cases

COVID-19 community cases cause a 0.000889 QALY loss, equivalent to asthma for 7 days [19]. With the model results, QALY losses for long COVID-19 are also applied to a percentage of cases.

Post-viral syndromes

We used 0.3 QALYs lost for six months (0.15 QALYs lost) which is the equivalent of moderate fibromyalgia [20] for six months [20], but also may be similar to other syndromes that are similar to 'long COVID-19' post-viral syndromes. We had clinical input into using fibromyalgia: as a similar syndrome but in reality long COVID-19 may be several distinct syndromes. We applied this to 10% of COVID-19 cases as ONS data suggests that around 10% of people in the COVID-19 infection survey report symptoms for 12 weeks or more [21].

Deaths

Deaths result in a QALY loss of 7.24 QALYs per death, based on data from the Secure Anonymised Information Linkage (SAIL) databank that estimated mean years of life lost of 9.97 when compared with age- and sex- specific life tables, multiplied by average health-related quality of life (HRQoL) utility index for people aged 75 and over in the UK (0.726) [22]. This may be a high estimate as it includes age but does not directly factor in co-morbidities in terms of mortality risk. Discounted at 1.5% per annum this is 6.78 QALYs. COVID-19 deaths results in an excess healthcare cost of £232 [23]. This is likely a low estimate.

Hospital and ICU admissions

We assume 0.01126 QALYs lost per admission and 0.274 HRQoL loss for 15 days, based on people in hospital for pneumonia [24]. Cost per admission of £7,085 is (NHS Wales Finance Delivery Unit). We assume 1.402 HRQoL loss for 9 days [24] (Note this means that the QALYs for this health state are 'worse than death'). Cost per admission is £22,198 (NHS Wales Finance Delivery Unit). Our hospital costs are higher than other estimates like NHS tariff/ reference costs as they include costs of PPE and other costs associated with the pandemic.

Results

Estimates of cases prevented

A total of 33,823 lateral flow device (LFD) tests were performed in Merthyr Tydfil County Borough between 21st November 2020 and 20th December 2020, of which 530 within a 14 712 were positive and reported asymptomatic. Of these 697.5231054 were estimated to be true positives (698 confirmed by PCR and an additional 168 estimated from PPV). Of these, 391 were estimated to not subsequently develop symptoms and contribute to secondary infections. In addition, an estimated 62 of those developing symptoms would still contribute to secondary infections. Figure 4 shows the daily count of these numbers over the testing period.

Including 1st and higher generation infections, a total of 360 (95% CI: 311 - 418) infections are estimated to have been prevented in the period from 21st November 2020 to 3rd January 2021. This represents 12.4% (10.7%, 14.4%) of the actual count of clinical cases diagnosed in the same period (2,900), an effective

reduction of 11% from the would-be case count without mass testing (3,260). This also represents a reduction in mean daily incidence rate of 13.9 (12 - 16.1) cases per 100,000 per day (actual mean daily incidence rate was 112 cases per 100,000 per day). This is the sum of 169 (156 - 182) estimated 1st generation infections and 192 (156 - 236) estimated 2nd and higher generation infections (see Table 2). Figure 5 shows daily estimates of infections prevented over the course of the mass testing and the following 14 days. Figure 6 shows the daily cases counts in Merthyr Tydfil with and without those estimated prevented by the mass testing.

Table 3 shows the estimated cases prevented for worst- and best-case scenarios, the worst-case scenario being 160 (142, 180) cases prevented, which is 44% of the original estimate and 6% of the actual case count. The best-case scenario is 2328 (1761, 3107), is 647% of the original estimate and 80% of the actual case count.

Estimates of healthcare burdens prevented

The model estimates, from the cases prevented during the mass testing, a total of 24 (16 - 36) hospitalizations, 5 (3 - 6) ICU admissions and 15 (11 - 20) deaths were prevented in the period between 21st November 2020 and 10th February 2021. These represent reductions of 6.37%, 11.1% and 8.19% of the actual hospitalization, ICU admissions and deaths, respectively. The estimated time course of these three outcomes are shown in Figure 7.

Table 3 shows the estimated hospital burdens prevented for worst- and best-case scenarios. Healthcare burdens prevented for the best-case scenario are 66 (49 - 92) hospitalizations, 9 (7 - 12) ICU admissions and 33 (26 - 42) deaths. These represent reductions of 17.6%, 22% and 18.4% of the actual hospitalization, ICU admissions and deaths, respectively.

Economic analysis

The programme was highly likely to be cost effective, with an incremental cost effectiveness ratio of £2,143 per QALY gained (lower confidence interval: £860, upper confidence interval: £4,175). Net monetary benefit for the intervention, which is cost savings plus the value of QALYs gained (valuing discounted QALYs at UK Treasury £60,000) was £6.2million (£4.5m – £8.4m). See Table 5.

The majority of benefits (around 90%) are through the discounted QALYs lost and costs of people dying from COVID-19 (see Table 6). As a sensitivity analysis, we varied the QALYs lost from early deaths down from 6.78 down to 5 QALYs, but the net monetary benefits were still large at £4.6million. We also had a sensitivity analysis where we varied the value of QALYs down from £60,000 to £30,000 but the net monetary benefit was still positive at £3.0million. Using a 3.5% discount rate for health benefits (as recommended by NICE) instead of UK Treasury 1.5% slightly decreased the net monetary benefit from £6.2million to £5.7million.

Discussion

Statement of principal findings

As a result of the whole area testing pilot in Merthyr Tydfil, a non-negligible number of cases, hospitalisations and deaths, that would have otherwise occurred, were likely to have been prevented. Over one tenth of cases that would have occurred over a 6 week period were prevented. This forecast translates into a predicted reduction of 6-12% in burden on the healthcare system relative to actual healthcare burden at the time. These results were obtained for a conservative, but probable scenario. In a less-conservative, best-case

scenario, the number of prevented cases could be as much as three quarters of the actual case count, and a reduction of 18-23% in burden on the healthcare system.

Economic analysis shows the mass testing pilot was cost-effective. This compares favourably with cost effectiveness thresholds such as the quoted National Institute for Health and Care Excellence (NICE's) threshold of £30,000 per QALY gained, or the health production cost for the NHS in England, which is said to be around £15,000 per QALY gained [25]. Even with pessimistic assumptions, the intervention is likely to be cost effective with a worst case scenario of £5,562 (£3,339 - £8,280 per QALY).

Strengths and weaknesses of the study

The model underlying these estimates makes a number of assumptions about the transmission dynamics of SARS-CoV-2. For example, the transmissibility of SARS-CoV-2 and the level of adherence to testing and self-isolation in symptomatic cases. Where possible, we used existing regional data to back up these assumptions. However, there is considerable uncertainty surrounding the definition of some of the parameters used. Our sensitivity analysis (See Appendix B) shows that the model is very sensitive to the relative infectability of asymptomatic cases, which is one parameter for which there is high uncertainty [14] and is inconstantly defined [26]. This makes the output of the model particular susceptible to errors in this parameter and should be considered when evaluating these estimates.

Another factor that was not considered in the model is differences in transmissibility between age and demographic groups. These groups will likely differ in their likelihood of transmitting and acquiring an infection. Such considerations would require generating R_t estimates for sub-populations for which sample sizes are likely to be too small. Also, the impact of new variants of concern and vaccine roll-out were not considered. These were not factors at the time of the pilot, but have subsequently become significant factors in the transmission dynamics of COVID-19. We have been quite conservative and not included costs of non-hospital cases or long COVID cases, and the QALY losses from long COVID cases are also quite conservative. The true costs and QALYs lost from COVID-19 are likely to be higher than these estimates which do not include post-hospital rehabilitation, the likely full implications of multi-organ damage, productivity, wages lost or informal care costs. The indirect opportunity costs for people whose NHS treatment is delayed because of treating COVID-19 patients is not included. Overall, if more costs were included, the benefits would be likely to be greater. There are other onward costs of the COVID-19 system that are not included in this such as the costs of contact tracing, but these would fall both onto the intervention costs side, and on the cost savings side of any cost effectiveness equation, because preventing cases would reduce the need for future contact tracing. We did not include equity impacts in the calculation of costs and benefits; Merthyr Tydfil has a deprived population so adding an additional weighting for equity would likely mean that the benefits would be greater [27]. However, it may also mean that people are exposed to more competing risks of morbidity and mortality. We have not included the benefits to individuals in Merthyr Tydfil from employment in supporting the mass testing programme. We did not carry out probabilistic sensitivity analysis or vary the economic parameters except in one-way sensitivity analyses; so the range of results is influenced only by the upper and lower estimates of the epidemiological modelling.

Strengths and weaknesses in relation to other studies, discussing important differences in results

This study is the first to evaluate the effectiveness of LFD mass testing by modelling the number of cases and healthcare burdens prevented and quantifying the benefits in terms of quality life years gained and healthcare costs saved. There has been previous studies that have evaluated the merits of the LFD testing in terms of sensitivity and specificity [6], but not on their cost effectiveness in the context of mass testing.

Most existing studies assessing cost-effectiveness of mass testing focus on screening exercises with PCR (see [28] for a review). One recent modelling study by [29] assessed the cost-effectiveness of LFD testing in a range of hypothetical scenarios in the USA. Their results also suggest mass testing by LFD is highly cost-effective, with repeated testing over a 28-day increment with 2-week isolation for positive cases suggested as the most cost-effective. A strength of the present study, is that it uses real-world data from a mass testing pilot and regional estimates of R_t from actual case counts, as opposed to simulations. This eliminates many of the assumptions relating to the population and the costs and strategy of the mass testing programme. The main assumptions of our model were on the dynamics of onward transmission for which we validated with regional data where available.

A comparable economic analysis has not yet been conducted on the Liverpool pilot, however an interim analysis using Bayesian time-series modelling estimated a small non-significant reduction in cases and hospitalisations due to mass-testing [2]. Our analysis shows that even a very small number of cases prevented can prove substantially cost-effective. Applying our model to the Liverpool data will therefore be prudent to determine if this is the case in Liverpool.

Meaning of the study: possible explanations and implications for clinicians and policymakers

The central estimate of net monetary benefit was £5.8 million which means a benefit-cost ratio of around 11 for the £516,000 that the programme cost, or a return on investment of around £10.30 per £1 spent. This is in line with the finding that public health interventions often have a high return on investment [30].

These encouraging results come despite the poor sensitivity of the LFD test. We were unable to calculate sensitivity from the pilot data due to no systematic PCR follow-up for LFD negative results. However, in a community setting, sensitivity is likely to be highly variable and can be as low as 3% [7]. The implication of our contrasting results is that consideration of mass testing programmes should be based on other factors, in addition to test sensitivity.

While generalisability of these findings to other regions with different socio-demographic profiles and under different prevalence scenarios needs further investigation, it is clear that mass testing, in conjunction with other NPI measures, should be considered an important tool in control of COVID19.

Unanswered questions and future research

It will be useful to compare with evaluations of other mass testing pilots such as in Liverpool and other parts of the world. The cost-effectiveness of mass testing will likely be influenced by specific demographics and local healthcare policies. In particular, the school mass testing programme currently undertaken in the UK should be evaluated for cost-effectiveness. Of particular concern is the impact of disease prevalence. The Merthyr Tydfil pilot was conducted at a time of particularly high prevalence (peak incidence during the pilot was 282 cases per 100,000 population). Had the pilot been conducted more recently, when prevalence was lower, the cost-effectiveness will likely be reduced.

A valuable next step will be to simulate cost-effectiveness in a range of hypothetical scenarios across a range of important parameters that were not controllable during the pilot. Most important is prevalence. In addition to increasing the number of false negatives, the number of false positives will increase in a low prevalence scenario. This may have further detrimental societal impact beyond cost-effectiveness (e.g. lost wages, productivity etc.). Other important parameters to examine are reproduction rate, test sensitivity and test uptake. The confounding effects of vaccine roll-out and variants of concern should be considered. Since the majority of the benefits are through prevented deaths, if vaccines reduce the infection fatality ratio, the

cost effectiveness of preventing transmission will decrease. Estimating cost-effectiveness in these different scenarios will be useful for deriving thresholds of community prevalence at which mass testing will become cost-effective, which will benefit local policy makers when planning future mass testing programmes.

Another aspect our analysis does not consider is the potential behavioural impact of a negative LFD test result. While a positive LFD test result will motivate an individual to self-isolate and reduce further transmission, a negative LFD test result may lead to a false sense of assurance and individuals engaging in more risky behaviour. Further research into the impact of such behavioural changes is therefore warranted.

Conclusions

Despite the poor sensitivity of the LFD test, its use in mass testing appears to have helped prevent a number of secondary cases during the Merthyr Tydfil pilot. A non-negligible number of hospitalisations and deaths are also likely to have been prevented. Economic analysis demonstrates that the pilot was a highly cost-effective exercise. However, there are a number of parameters, in particular prevalence, which are likely to significantly influence cost-effectiveness. Future work to identify thresholds of cost-effectiveness across these parameters will provide policy makers valuable guidance in planning of future mass testing programmes.

Acknowledgements

We thank all those who contributed to mass testing pilot including Merthyr Tydfil County Borough Council, Rhondda Cynon Taf County Borough Council, Cwm Taf Morgannwg University Health Board, Welsh Ambulance Service Trust, Public Health Wales, Welsh Government, Schools, Police, Third Sector and Military personnel.

Additional thanks to Malorie Perry, Arthur Duncan-Jones, Craiger Solomons, James Anderson, Drew Turner and Laia Fina for assistance with data access and processing. Thanks to Jane Salmon and Christopher Williams for valuable comments on the manuscript.

Funding

This study was performed as part of our ongoing epidemic response and no external sources of funding were used.

Ethic Committee Approval

The study was reviewed by the Public Health Wales Research and Development Office and determined to be usual practice in public health, and therefore did not require external NHS ethics committee approval. Investigation of communicable disease outbreaks and surveillance of notifiable disease is permitted under Public Health Wales Establishment Order. Data were held and processed under Public Health Wales information governance arrangements in compliance with the Data Protection Act, Caldicott Principles and Public Health Wales guidance on the release of small numbers. No data identifying protected characteristics of an individual were released outside Public Health Wales.

Competing interest statement

All authors have completed the *Unified Competing Interest form* (available on request from the corresponding author) and declare: no support from any organization for the submitted work; no financial

relationships with any organizations that might have an interest in the submitted work in the previous three years. Dr Collins is seconded as Head of Health Economics in Welsh Government, this paper does not represent any views of Welsh Government.

Transparency declaration

The lead author (*the manuscript's guarantor*) affirms that this manuscript is an honest, accurate, and transparent account of the study being reported; that no important aspects of the study have been omitted; and that any discrepancies from the study as planned (and, if relevant, registered) have been explained.

Data Availability Statement

Aggregated data on cases, hospitalizations and deaths is available on the Public Health Wales Rapid Covid-19 Surveillance Dashboard [3]. Further data can be made available on reasonable request.

Author Approval

All authors have seen and approved the manuscript.

Copyright statement

I, the Submitting Author has the right to grant and does grant on behalf of all authors of the Work (as defined in the [author licence](#)), an exclusive licence and/or a non-exclusive licence for contributions from authors who are: i) UK Crown employees; ii) where BMJ has agreed a CC-BY licence shall apply, and/or iii) in accordance with the terms applicable for US Federal Government officers or employees acting as part of their official duties; on a worldwide, perpetual, irrevocable, royalty-free basis to BMJ Publishing Group Ltd ("BMJ") its licensees.

The Submitting Author accepts and understands that any supply made under these terms is made by BMJ to the Submitting Author unless you are acting as an employee on behalf of your employer or a postgraduate student of an affiliated institution which is paying any applicable article publishing charge ("APC") for Open Access articles. Where the Submitting Author wishes to make the Work available on an Open Access basis (and intends to pay the relevant APC), the terms of reuse of such Open Access shall be governed by a Creative Commons licence – details of these licences and which licence will apply to this Work are set out in our licence referred to above

Figures

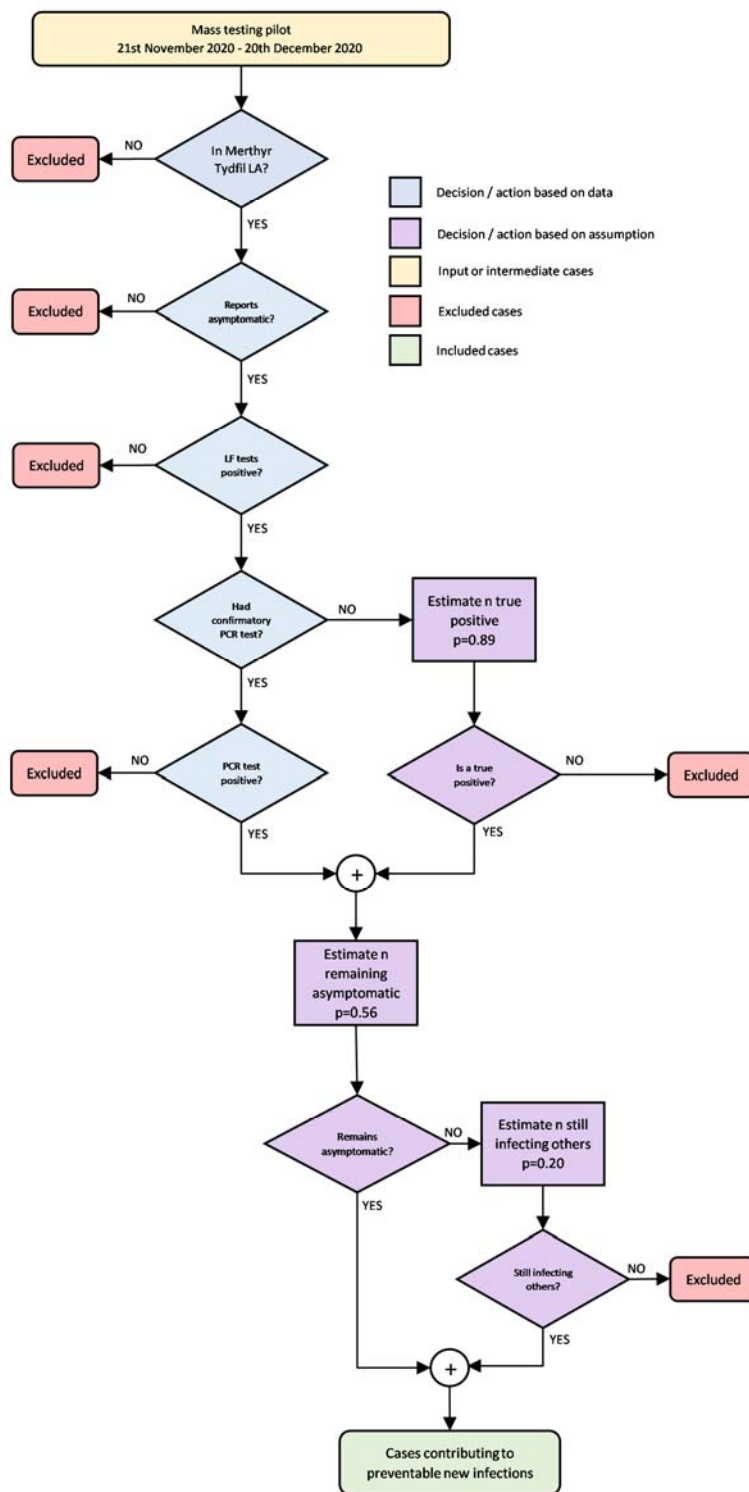


Figure 1: Flowchart of process for estimating number of cases detected by mass testing that would not otherwise be detected.

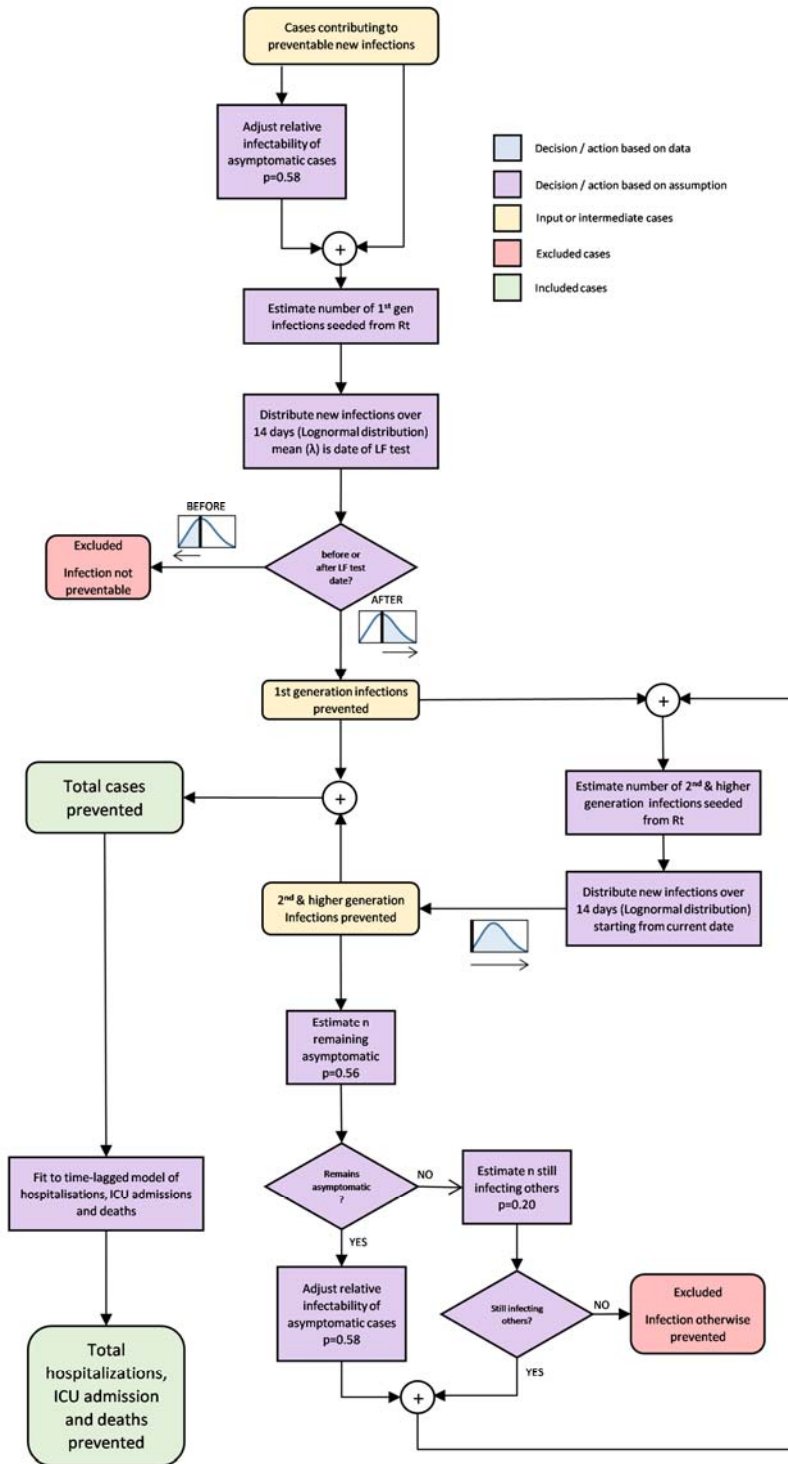


Figure 2: Flowchart of process for estimating number of cases prevented, and other healthcare outcomes. This process is followed iteratively for each day in the testing period.

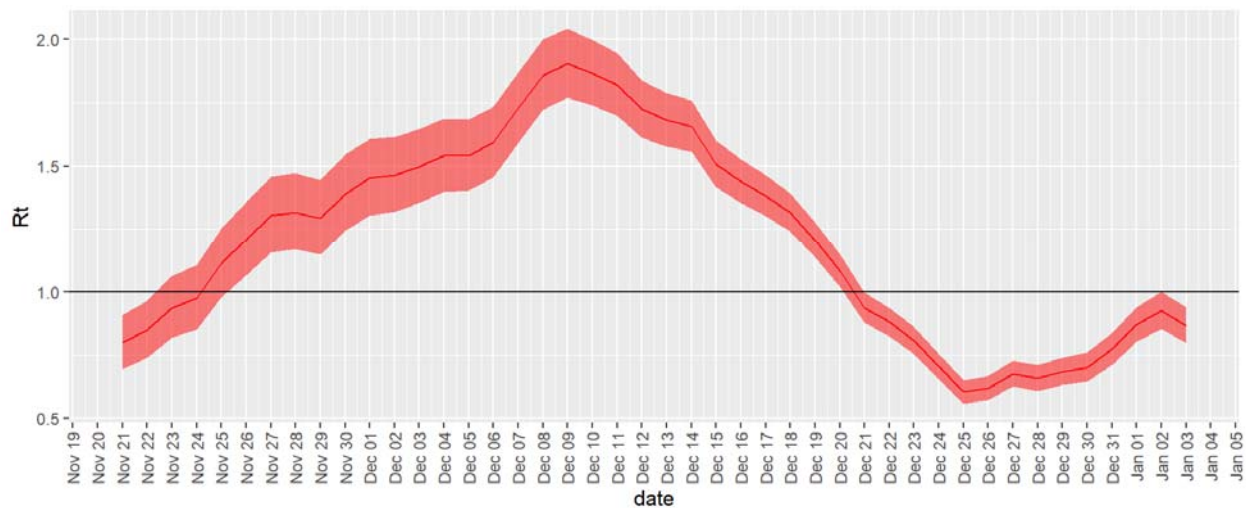


Figure 3: Estimated Rt in Merthyr Tydfil over the testing period

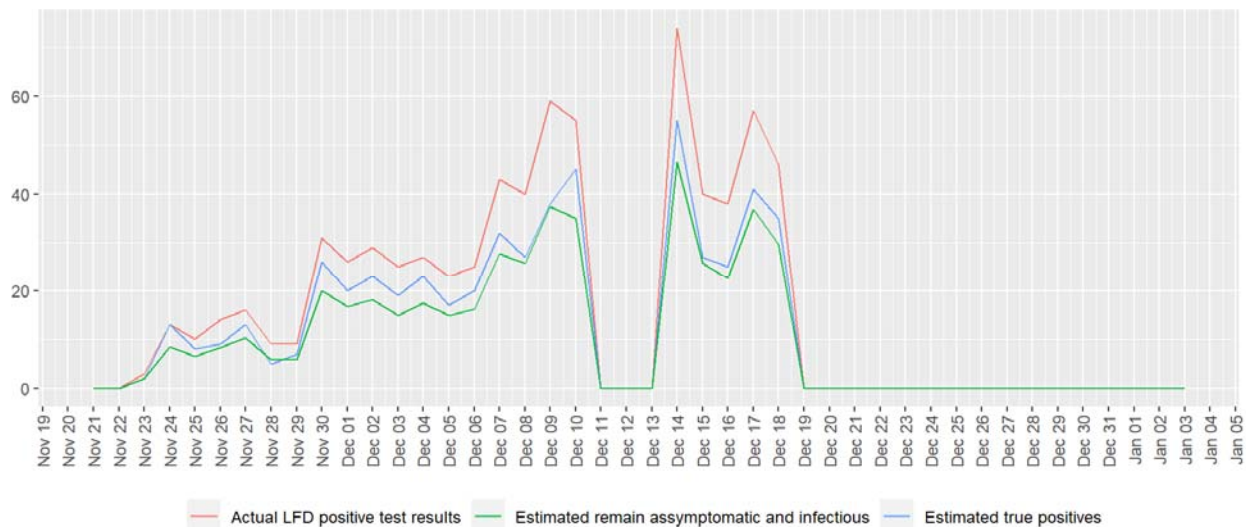


Figure 4: Positive lateral flow test results from community testing pilot in Merthyr Tydfil, with estimates for true positives and proportion remaining asymptomatic. Note that missing data in the weekend of 11th to 13th December is due to temporary suspension of the mass testing on these dates.

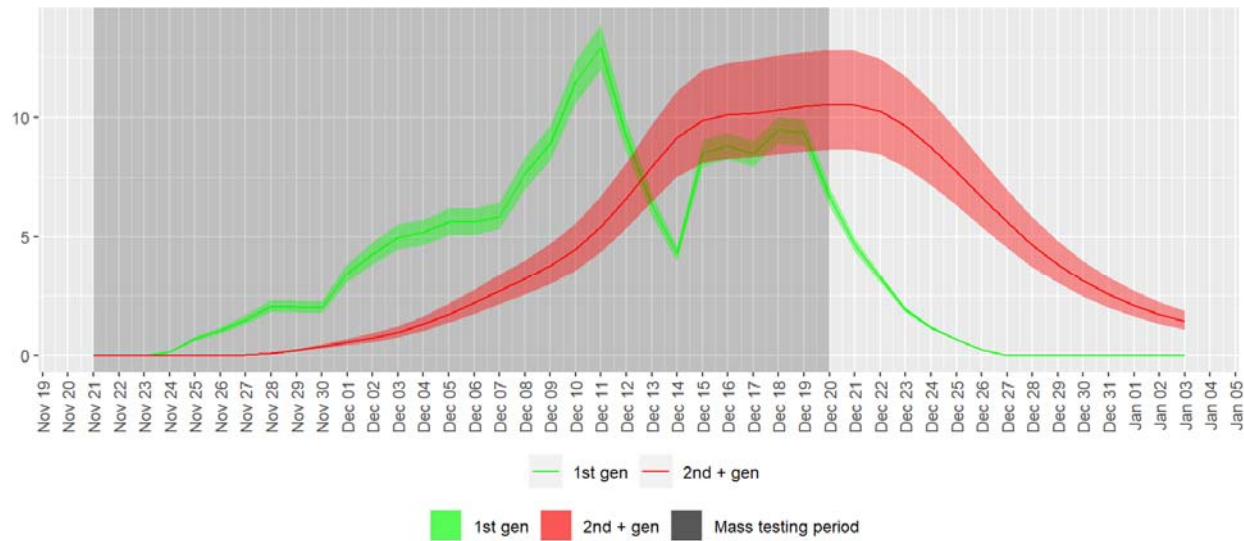


Figure 5: Daily estimates of 1st generation and 2nd + higher generation infections prevented

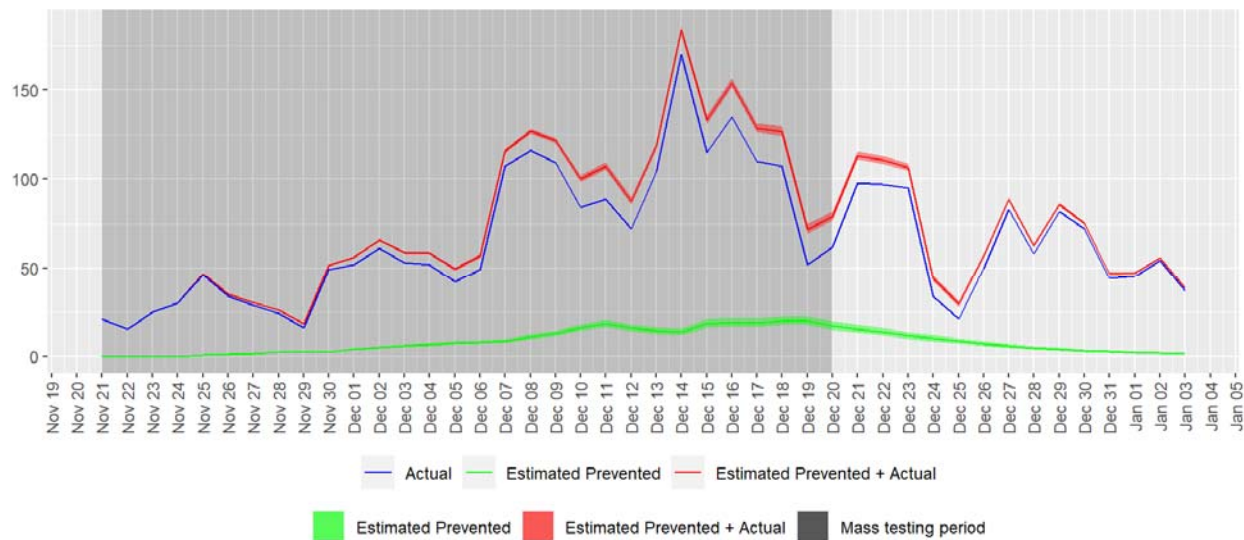


Figure 6: Cases counts with and without estimated prevented by mass testing

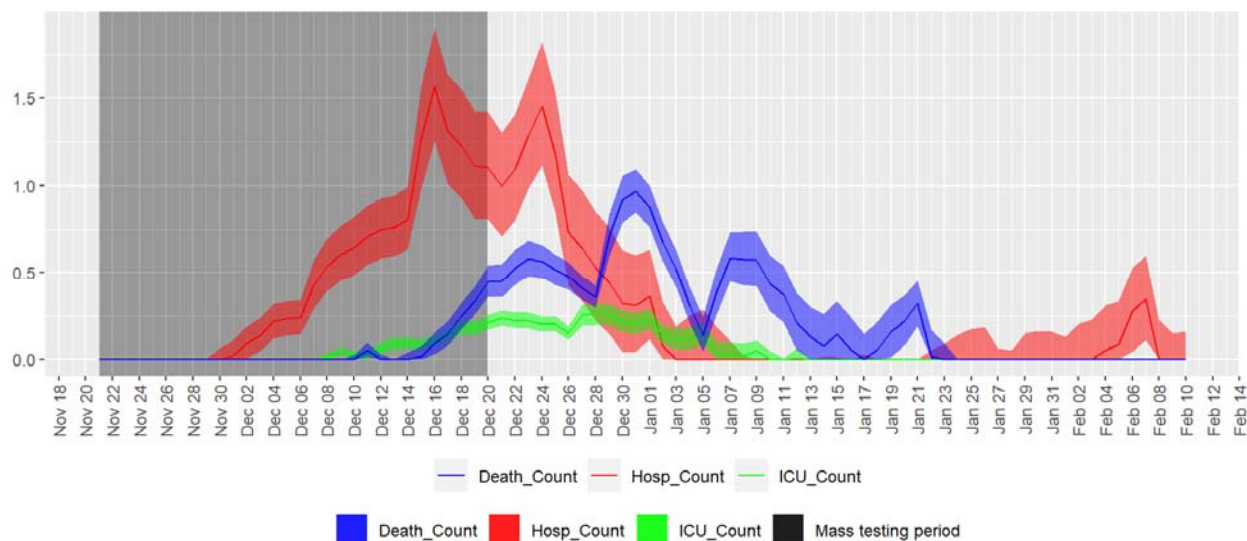


Figure 7: Estimates of hospitalizations, ICU admissions and deaths prevented from cases prevented by mass testing

Tables

Table 1: Test centres, within Merthyr Tydfil LA participating in mass testing included in the analysis

Code	Name
CFCE	Cefn Community Centre
ACCA	Aberfan Leisure Centre
ALHS	Alpha House, Heolgerrig
DWCE	Dowlais Community Centre
MTLC	Dowlais Engine House
TEHS	Quakers Yard Community Centre
QYCC	Rhydycar Leisure Centre
TOCL	The Old Clinic, Gurnos
TWCT	The Willows, Troedyrhiw
TCCT	Trelewis Community Centre
BRFC	Bedlinog Rugby FC
TBGC	Treharris Boys & Girls Club
PTMH	Pontsticill Memorial Hall
SMCT	St Matthias Church

Table 2: Estimated cases prevented

Description	n	upper CI	lower CI
-------------	---	----------	----------

Actual case count	2900		
LFD test performed during mass testing	48834		
- of which were in the Merthyr Tydfil LA	33823		
- of which were asymptomatic and tested positive	712		
- of which had a confirmatory PCR test result	530		
- of which had no confirmatory PCR test	171		
- of which were estimated to be true positives from PPV	168		
- of which are true positives (PCR-confirmed + estimated from PPV)	698		
- of which were estimated to remain asymptomatic	391		
- of which were estimated to become symptomatic	306		
- of which were estimated to still contribute to infections	62		
Infectious cases identified not otherwise identifiable.	453		
1st generation infections prevented	169	182	156
2nd and higher generation infections prevented	192	236	156
Total estimated number of prevented cases	360	418	311

Table 3: Total estimated cases prevented and associated healthcare outcomes for original, worst-case and best-case scenarios

Scenario	Cases			Hospitalizations			ICU admissions			Deaths		
	n	Lower	Upper	n	Lower	Upper	n	Lower	Upper	n	Lower	Upper
Original	360	311	418	24	16	36	5	3	6	15	11	20
Worst-case	160	142	180	13	8	20	3	2	4	9	7	12
Best-case	2328	1761	3107	66	49	92	9	7	12	33	26	42

Table 4: Outcomes, QALYs and costs per unit.

Outcome	Mid estimate	Low estimate	High estimate	QALYs lost per case	Costs per case (£)
Cases	360	311	418	0.0159	0
Hospitalisations	24	16	36	0.0113	7085
ICU admissions	5	3	6	0.0346	22198
Deaths	15	11	20	6.7800	232

Table 5: Estimated QALYs gained, cost savings, incremental cost effectiveness ratios (ICERs) and net monetary benefit of mass testing programme in Merthyr Tydfil, for mid, high and low estimate of effectiveness.

	mid	low	high
QALYs gained	108	80	143
Net costs (£)	231,188	333,188	122,814

ICER (Incremental cost effectiveness ratio) cost per QALY gained (£)	2,143	4,175	860
Net monetary benefit (valuing QALYs at £60,000) (£)	6,240,594	4,455,127	8,448,442
Sensitivity analysis			
Net monetary benefit - worst case model parameters (£)	3,473,831	2,579,534	4,792,587
Net monetary benefit - best case model parameters (£)	15,866,328	12,296,102	20,546,837
Net monetary benefit with lower QALY loss for COVID deaths (£)	4,638,594	3,280,327	6,312,442
Net monetary benefit valuing QALYs at £30,000 instead of £60,000 (£)	3,004,703	2,060,970	4,162,814
Net monetary benefit (3.5% discount rate instead of 1.5%)	5,745,594	4,092,127	7,788,442

Table 6: QALYs gained and cost savings for mid, low and high scenarios of mass testing intervention in Merthyr Tydfil. Negative cost savings indicate net costs.

	QALYs gained			Cost savings (£)		
	mid	low	high	mid	low	high
Cases	6	5	7	-	-	-
Hospital cases	0	0	0	170,032	113,354	255,047
ICU cases	0	0	0	110,989	66,593	133,187
Deaths	102	75	136	3,480	2,552	4,640
Programme costs				-515,688	-515,688	-515,688
Total	108	80	143	-231,188	-333,188	-122,814

Appendix A: Mathematical description of the model

The estimated number of estimated cases prevented on day t , denoted $x_{prev}(t)$, takes the form of an ordinary differential equation. The number of infections seeded on each day is computed differently for 1st generation infections $x_{seed}^{(1)}(t)$ and higher generation infections $x_{seed}^{(n)}(t)$.

$$x_{seed}^{(1)}(t+1) = x_{prev}^{(0)}(t) R(t)$$

$$x_{seed}^{(n)}(t+1) = (x_{prev}^{(1)}(t) + x_{prev}^{(n)}(t))((1 - p_{sym})r_{asym} + p_{sym}p_{sym,inf}) R(t)$$

where $R(t)$ is the reproduction number, p_{sym} is the proportion of cases that are symptomatic, and r_{asym} is the relative infectability of asymptomatic cases relative to symptomatic cases. The number of asymptomatic cases arising from prevented cases, given by $x_{prev}(t)(1 - p_{sym})$ is assumed to contribute to the next generation of seeded cases. Additionally, a smaller number of symptomatic cases will also contribute to the next generation of seeded cases. This is given by $x_{prev}(t)(p_{sym}p_{sym,inf})$, where $p_{sym,inf}$ is the proportion of symptomatic cases that contribute to new cases. p_{sym} and $p_{sym,inf}$ are assumed to be constant.

The initial number of infections projected (the 0th generation infections), $x_{prev}^{(0)}(t)$ are given by the number of asymptomatic LFD tests with confirmatory positive PCR test result, $n_{LFDtest+PCR}(t)$, and with those no

confirmatory PCR tests $n_{LFDtest}(t)$, the positivity prediction value p_{PPV} , the proportion estimated to be asymptomatic, given by $1 - p_{sym}$, the proportion of symptomatic cases and still contributing to new infections $p_{sym,inf}$ and the relative infectability of asymptomatic cases r_{asym} .

$$x_{prev}^{(0)}(t) = (n_{LFDtest+PCR}(t) + n_{LFDtest}(t)p_{PPV})((1 - p_{sym})r_{asym} + p_{sym}p_{sym,inf})$$

$x_{prev}(t)$ for other generations is computed from the convolution of $x_{seed}(t)$ with the log-normal model of the distribution of infections over time, $p_{inf}(t) = \text{LognormalPDF}(t; \mu, \sigma^2)$. For 1st generation infections, only the portion of the distribution from the median e^μ is included in the convolution.

$$x_{prev}^{(1)}(t) = \int_0^T x_{seed}^{(1)}(\tau) p_{inf}(t + e^\mu - \tau) d\tau$$

For nth generation infections, the whole distribution is included in the convolution.

$$x_{prev}^{(n)}(t) = \int_0^T x_{seed}^{(n)}(\tau) p_{inf}(t - \tau) d\tau$$

where T is the length of the interval being analysed.

The total number of prevented cases for each day is then obtained from the sum of prevented 1st and nth generation infections.

$$x_{prev}(t) = x_{prev}^{(1)}(t) + x_{prev}^{(n)}(t)$$

Appendix B: Sensitivity analysis

Some of the assumptions underlying the analysis (see: Box 1) have a high degree of uncertainty. Three parameters were highlighted for sensitivity analysis and produce worst-case and best-case scenarios for the number of cases prevented and associated healthcare outcomes (worst case being highest number of cases prevented). All these parameters depend on to categorisation of symptomatic and asymptomatic cases. There are nuances in the definitional boundary between symptomatic and asymptomatic infection across studies [26], including separate categorisations of presymptomatic and paucisymptomatic cases which were not made in this analysis. These nuances make this set of parameters particularly challenging to quantify. The parameters of concern are:

1. The proportion of asymptomatic cases that become symptomatic (assumption 8).

This value of 0.44 was obtained from the follow up case-control study undertaken at the same time as the mass testing [13]. This estimate is chosen due to its highly specific to the geography and demography of the mass testing sample. However, this is quite a high estimate compared to other estimates in the literature. In the systematic review of [31], about three quarters of asymptomatic positive cases, never go on to develop symptoms. We therefore test against a lower best-case estimate of 0.25.

2. The proportion of symptomatic cases who contribute to further transmission (assumption 7).

This value of 0.2 was obtained from contact tracing data in the Merthyr Tydfil LA, cross referencing contacts and identifying which contacts originate from symptomatic positive cases. Again, this is the chosen estimate for the main analysis as it is highly specific to the geography and demography of the mass testing sample. However, incompleteness in contact reporting means this value is likely to be under-estimated. A cross-sectional survey in the UK by [32] indicate the proportion of symptomatic cases who fail to self-isolate is much higher (0.75). We therefore use this as a best-case alternative for this parameter.

3. The relative infectability of asymptomatic cases compared to symptomatic cases (assumption 2).

The value of 0.58 was obtained from the meta-analysis of [14]. However, this estimate has very large confidence intervals (0.34 - 0.99, with the upper bound treating the two groups as virtually equal in infectability). We do not have robust way of estimating this parameter in the mass testing sample, so we use the central estimate from this meta-analysis as the main parameter and the bounds of the confidence interval from this meta-analysis as best-case and worst-case estimates.

Results of sensitivity analysis are shown in Table 7. The first two parameters tested (proportion of asymptomatic cases that become symptomatic and proportion of symptomatic cases who contribute to further transmission) produced small relative sensitivity values (magnitude below 1). The number of cases prevented when adjusting these values to less conservative estimates are 424 and 644, respectively (representing increases of 18% and 79% of the original estimate). However, sensitivity to the relative infectability of asymptomatic cases was very large (greater than 2). The number of estimated cases prevented in the less conservative scenario is 1066 (an increase of 196%). The model is therefore particularly sensitive to this parameter and so uncertainty in its estimation should be carefully considered when evaluating estimates produced by this model.

The parameters used for the best- and worst-case scenarios used in the main analysis are shown in Table 8.

Table 7: Results of sensitivity analysis

Parameter description	Original parameter	New parameter	Absolute parameter change	Relative Parameter change	New output	Absolute output change	Relative output change	Absolute sensitivity	Relative sensitivity
Proportion of asymptomatic cases who become symptomatic (p_{sym})	0.439	0.250	-0.189	-0.431	424	64	0.178	-338	-0.412
Proportion of symptomatic cases who contribute to further transmission ($p_{sym,inf}$)	0.201	0.751	0.550	2.735	644	284	0.789	516	0.288
Relative infectability of asymptomatic cases, compared to	0.580	0.990	0.410	0.707	1066	706	1.961	1722	2.774

symptomatic cases

(r_{asym})

Table 8: Parameters varied to produce best- and worst-case scenarios

Parameter description	Original scenario	Worst-case	Best-case
Proportion of symptomatic cases who become symptomatic	0.439	0.439	0.250
Proportion of symptomatic cases who contribute to further transmission	0.201	0.201	0.751
Relative infectability of asymptomatic cases, compared to symptomatic cases	0.580	0.340	0.990

References

- 1 Mahase E. Covid-19: UK regulator approves lateral flow test for home use despite accuracy concerns. *BMJ (Clinical research ed)* 2020;**371**:m4950. doi:[10.1136/bmj.m4950](https://doi.org/10.1136/bmj.m4950)
- 2 the University of Liverpool. University of Liverpool et al. Liverpool community testing pilot: Interim evaluation report. [23 Dec 2020]. 2020. <https://www.liverpool.ac.uk/media/livacuk/coronavirus/Liverpool,Community,Testing,Pilot,Interim,Evaluation.pdf>
- 3 Merthyr Tydfil County Borough, Rhondda Cynon Taf Borough. Evaluation of the Lateral Flow Device Testing Pilot for COVID-19 in Merthyr Tydfil and the lower Cynon Valley. 2021. <https://cwmtafmorgannwg.wales/whole-area-testing-estimated-to-have-prevented-hundreds-of-cases-of-covid-19/>
- 4 Public Health Wales. Rapid Covid-19 Surveillance Dashboard. 2020. <https://public.tableau.com/profile/public.health.wales.health.protection#!/vizhome/RapidCOVID-19virology-Public/Headlinesummary>
- 5 Welsh Government. Welsh Index of Multiple Deprivation 2019. 2019. <https://gov.wales/welsh-index-multiple-deprivation-full-index-update-ranks-2019>
- 6 Wise J. Covid-19: Lateral flow tests miss over half of cases, Liverpool pilot data show. *BMJ (Clinical research ed)* 2020;**371**:m4848. doi:[10.1136/bmj.m4848](https://doi.org/10.1136/bmj.m4848)
- 7 Ferguson J, Dunn S, Best A *et al*. Validation testing to determine the sensitivity of lateral flow testing for asymptomatic SARS-CoV-2 detection in low prevalence settings: Testing frequency and public health messaging is key. *PLOS Biology* 2021;**19**:e3001216. doi:[10.1371/journal.pbio.3001216](https://doi.org/10.1371/journal.pbio.3001216)
- 8 Care S, Health P, Porton E. Preliminary report from the Joint PHE Porton Down & University of Oxford SARS-CoV-2 test development and validation cell : Rapid evaluation of Lateral Flow Viral Antigen detection devices (LFDs) for mass community testing : 2020;2–7.
- 9 Mahase E. Covid-19: People are not being warned about pitfalls of mass testing. 2021;**372**. doi:[10.1136/bmj.n238](https://doi.org/10.1136/bmj.n238)
- 10 Deeks JJ, Raffle AE. Lateral flow tests cannot rule out SARS-CoV-2 infection. 2020;**371**. doi:[10.1136/bmj.m4787](https://doi.org/10.1136/bmj.m4787)
- 11 Kmietowicz Z. Covid-19: Controversial rapid test policy divides doctors and scientists. *BMJ (Clinical research ed)* 2021;**372**:n81. doi:[10.1136/bmj.n81](https://doi.org/10.1136/bmj.n81)
- 12 Torjesen I. What do we know about lateral flow tests and mass testing in schools? *BMJ* 2021;**372**:n706. doi:[10.1136/bmj.n706](https://doi.org/10.1136/bmj.n706)

- 13 Thomas DR, Homar Fina L, Adamson JP *et al.* Social, demographic and behavioural determinants of SARS-CoV-2 infection: A case-control study carried out during mass community testing of asymptomatic individuals in South Wales, December 2020. *medRxiv* 2021;2021.04.06.21253465. doi:[10.1101/2021.04.06.21253465](https://doi.org/10.1101/2021.04.06.21253465)
- 14 Byambasuren O, Cardona M, Bell K *et al.* Estimating the extent of asymptomatic COVID-19 and its potential for community transmission: Systematic review and meta-analysis. *Official Journal of the Association of Medical Microbiology and Infectious Disease Canada* 2020;**5**:223–34. doi:[10.3138/jammi-2020-0030](https://doi.org/10.3138/jammi-2020-0030)
- 15 Cori A, Ferguson NM, Fraser C *et al.* A new framework and software to estimate time-varying reproduction numbers during epidemics. *American Journal of Epidemiology* 2013;**178**:1505–12. doi:[10.1093/aje/kwt133](https://doi.org/10.1093/aje/kwt133)
- 16 McAloon C, Collins Á, Hunt K *et al.* Incubation period of COVID-19: A rapid systematic review and meta-analysis of observational research. *BMJ Open* 2020;**10**:e039652. doi:[10.1136/bmjopen-2020-039652](https://doi.org/10.1136/bmjopen-2020-039652)
- 17 Drummond MF, Sculpher MJ, Claxton K *et al.* *Methods for the Economic Evaluation of Health Care Programmes*. 4th ed. Oxford:: Oxford University Press 2015.
- 18 Department of Health and Social Care, Home Office for NSGAD and. Direct and indirect impacts of COVID-19 on excess deaths and morbidity - 15 July 2020. 2020.
- 19 Sullivan PW, Slejko JF, Sculpher MJ *et al.* Catalogue of EQ-5D scores for the United Kingdom. *Medical Decision Making* 2011;**31**:800–4. doi:[10.1177/0272989X11401031](https://doi.org/10.1177/0272989X11401031)
- 20 Schaefer C, Chandran A, Hufstader M *et al.* The comparative burden of mild, moderate and severe Fibromyalgia: Results from a cross-sectional survey in the United States. *Health and Quality of Life Outcomes* 2011;**9**:71. doi:[10.1186/1477-7525-9-71](https://doi.org/10.1186/1477-7525-9-71)
- 21 Office for National Statistics. Updated estimates of the prevalence of long COVID symptoms. 2021. <https://www.ons.gov.uk/peoplepopulationandcommunity/healthandsocialcare/healthandlifeexpectancies/adhocs/12788updatedestimatesoftheprevalenceoflongcovidsymptoms>
- 22 Janssen B, Szende A. Population norms for the EQ-5D. In: *Self-reported population health: An international perspective based on eq-5D*. Springer Netherlands 2014. 19–30. doi:[10.1007/978-94-007-7596-1_3](https://doi.org/10.1007/978-94-007-7596-1_3)
- 23 Zala D, Mosweu I, Critchlow S *et al.* Costing the COVID-19 Pandemic: An Exploratory Economic Evaluation of Hypothetical Suppression Policy in the United Kingdom. *Value in Health* 2020;**23**:1432–7. doi:[10.1016/j.jval.2020.07.001](https://doi.org/10.1016/j.jval.2020.07.001)
- 24 Andronis L, Oppong RA, Manga N *et al.* Is the Venner-PneuX Endotracheal Tube System a Cost-Effective Option for Post Cardiac Surgery Care? *Annals of Thoracic Surgery* 2018;**106**:757–63. doi:[10.1016/j.athoracsur.2018.03.058](https://doi.org/10.1016/j.athoracsur.2018.03.058)
- 25 Claxton K, Sculpher M, Palmer S *et al.* Comment: Causes for concern: Is nice failing to uphold its responsibilities to all NHS patients? 2015;**24**:1–7. doi:[10.1002/hec.3130](https://doi.org/10.1002/hec.3130)
- 26 Meyerowitz EA, Richterman A, Bogoch II *et al.* Towards an accurate and systematic characterisation of persistently asymptomatic infection with SARS-CoV-2. *The Lancet Infectious Diseases* 2020;**0**. doi:[10.1016/S1473-3099\(20\)30837-9](https://doi.org/10.1016/S1473-3099(20)30837-9)
- 27 Cookson R, Mirelman AJ, Griffin S *et al.* Using Cost-Effectiveness Analysis to Address Health Equity Concerns. *Value in Health* 2017;**20**:206–12. doi:[10.1016/j.jval.2016.11.027](https://doi.org/10.1016/j.jval.2016.11.027)

28 Rezapour A, Souresrafil A, Peighambari MM *et al.* Economic evaluation of programs against COVID-19: A systematic review. *International Journal of Surgery* 2021;**85**:10–8. doi:[10.1016/j.ijssu.2020.11.015](https://doi.org/10.1016/j.ijssu.2020.11.015)

29 Du Z, Pandey A, Bai Y *et al.* Comparative cost-effectiveness of SARS-CoV-2 testing strategies in the USA: a modelling study. *The Lancet Public Health* 2021;**6**:184–91. doi:[10.1016/s2468-2667\(21\)00002-5](https://doi.org/10.1016/s2468-2667(21)00002-5)

30 Masters R, Anwar E, Collins B *et al.* Return on investment of public health interventions: A systematic review. 2017;**71**:827–34. doi:[10.1136/jech-2016-208141](https://doi.org/10.1136/jech-2016-208141)

31 Oran DP, Topol EJ. The Proportion of SARS-CoV-2 Infections That Are Asymptomatic. *Annals of Internal Medicine* Published Online First: January 2021. doi:[10.7326/m20-6976](https://doi.org/10.7326/m20-6976)

32 Smith LE, Amlt R, Lambert H *et al.* Factors associated with adherence to self-isolation and lockdown measures in the UK: a cross-sectional survey. *Public Health* 2020;**187**:41–52. doi:[10.1016/j.puhe.2020.07.024](https://doi.org/10.1016/j.puhe.2020.07.024)