

## **Neocortical Localization and Thalamocortical Modulation of Neuronal Hyperexcitability in Fragile X Syndrome**

**Authors:** Ernest V Pedapati<sup>1,2,3\*</sup>, Lauren M. Schmitt<sup>4,8</sup>, Rui Liu<sup>1</sup>, Lauren E. Ethridge<sup>5,6</sup>, Elizabeth Smith<sup>7,8</sup>, John A Sweeney<sup>3</sup>, Rebecca C. Shafter<sup>4,8</sup>, Kelli C. Dominick<sup>1,3</sup>, Donald L. Gilbert<sup>2,8</sup>, Steve W. Wu<sup>2,8</sup>, Paul S. Horn<sup>2</sup>, Devin Binder<sup>9</sup>, Martine Lamy<sup>1,3</sup>, Megan Axford<sup>1</sup>, Makoto Miyakoshi<sup>10</sup>, and Craig A. Erickson<sup>1,3</sup>

### **Supplementary Materials**

### *Supplemental Figures*

Figure S1. Group Contrasts of Relative power of Scalp EEG by Frequency Band

Figure S2. Subject level distribution of significant relative power differences by group and frequency band

Figure S3. Group Differences in Resting State Networks

Figure S4. Sex and Group Differences in Cortical Regions by Frequency Bands

Figure S5. Obligate mosaicism present in Fmr1 in females with FXS may attenuate elevated gamma power observed in males with FXS.

### *Supplemental Tables*

Table S1. Additional Clinical Characteristics by Group

Table S2. Alterations in relative power are significantly correlated with disease relevant clinical measures.

Table S3. DK Atlas Nodal Group Comparison

Table S4. Regional sex and group differences in source-localized relative power by frequency band.

Table S5. Mean Alpha Shift (alpha1/alpha2 power) by group and sex.

Table S6. Differences in alpha shift across cortical regions by group and sex.

Table S7. Statistical comparison of FXS-TDC differences in alpha shift between regions

Clinical Correlations of Cognitive and Sensory Resting State Networks

Cognitive Network Clinical Correlations

Table S9. Default Mode Network

Table S10. Dorsal Attention Network

Table S11. Salience Network

Sensory Network Clinical Correlations

Table S12. Auditory Network

Table S13. Visual Network

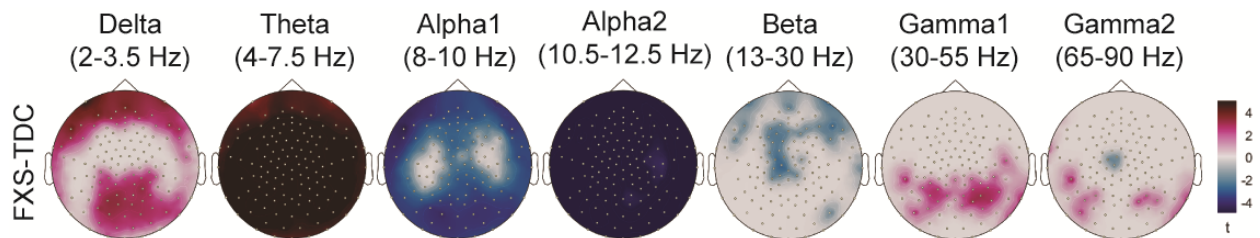
Table S14. Resting state networks and their cortical nodes as attributed in the Desikan-Killiany (DK) atlas.

Table S15. Regional classification of DK Atlas Nodes

## Supplementary Materials:

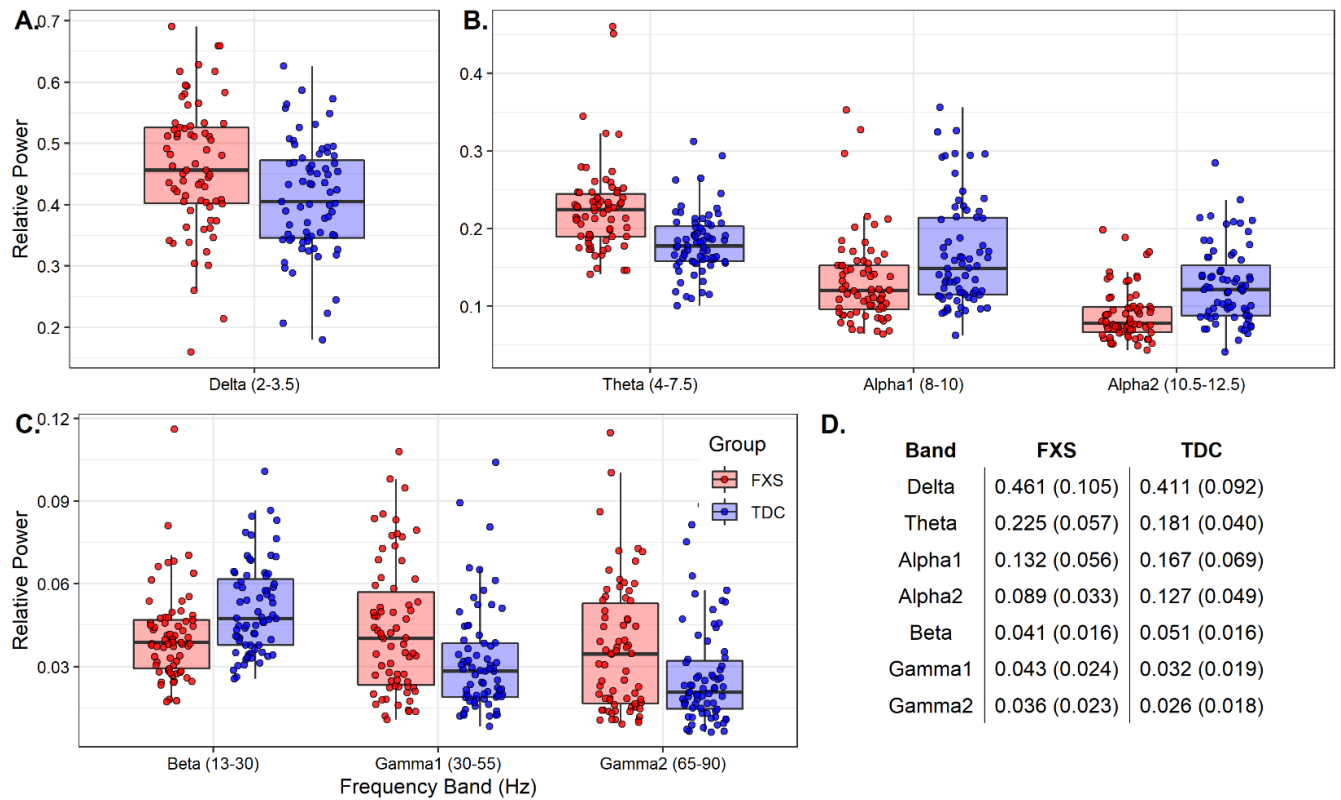
### Figure S1. Group Contrasts of Relative power of Scalp EEG by Frequency Band

Group level t-maps (5% FDR-corrected) of scalp EEG comparisons between FXS (n=70) and TDC (n=71) by frequency band. Participants with FXS showed markedly increased power in mid-frontal theta activity predominantly and increased gamma1 and gamma2 activity in electrodes over the temporal and posterior regions. Alpha1 and alpha2 power was widely diminished in FXS across frontal and posterior electrodes. As findings across scalp EEG remain spatially ambiguous<sup>79</sup>, the findings were primarily used to generate hypotheses and assess for frequency specific trends across groups. Warmer colors indicate significant FXS>TDC, cooler colors indicate significant FXS<TDC, and gray areas indicate non-significant group differences.



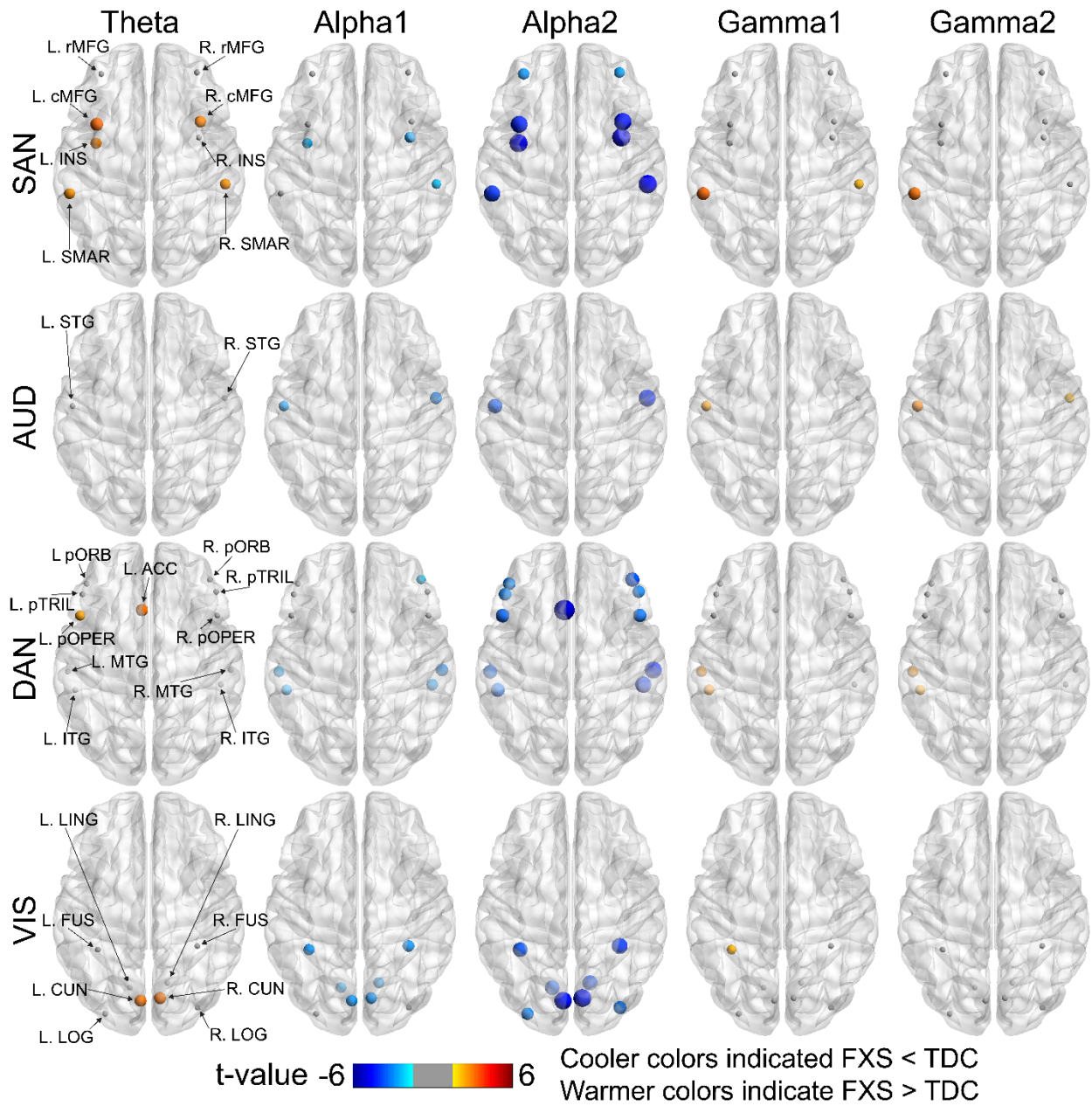
**Figure S2. Subject level distribution of significant relative power differences by group and frequency band**

Group level boxplots (A-C) displaying median and interquartile range of relative power by frequency band for each significant region of interest from **Figure 1 (B)**. Frequency bands are split into subplots to optimize scale. Scatter plots of subject level data are superimposed on boxplots. D. Tabular view of mean relative power ( $\pm$  standard deviation) for each group by frequency band. FXS, Fragile X Syndrome; TDC, Typically Developing Controls.



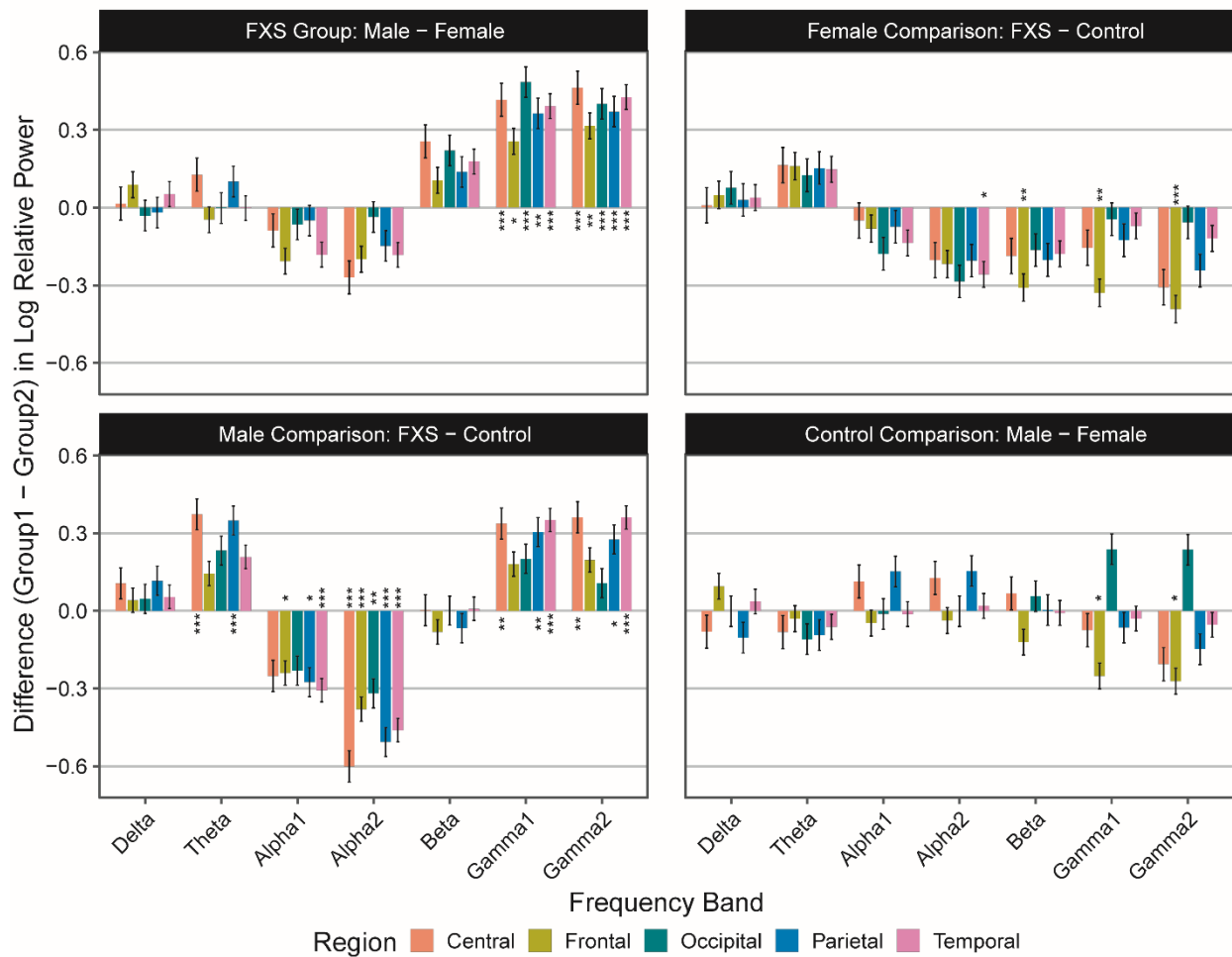
### **Figure S3. Group Differences in Resting State Networks**

Group-level, frequency-specific t-maps depicting significant FXS vs. TDC differences in nodal relative power in resting-state networks (RSN). Gray indicates contrast is non-significant. DMN, default mode network; DAN, dorsal attention network; SAN, salient affective network; VIS, visual attention network; AUD, auditory network. Significant contrasts ( $p < .05$ , FDR corrected) are displayed with warmer colors indicating FXS > TDC and cool colors indicating FXS < TDC, with size of node proportional to absolute t-value.



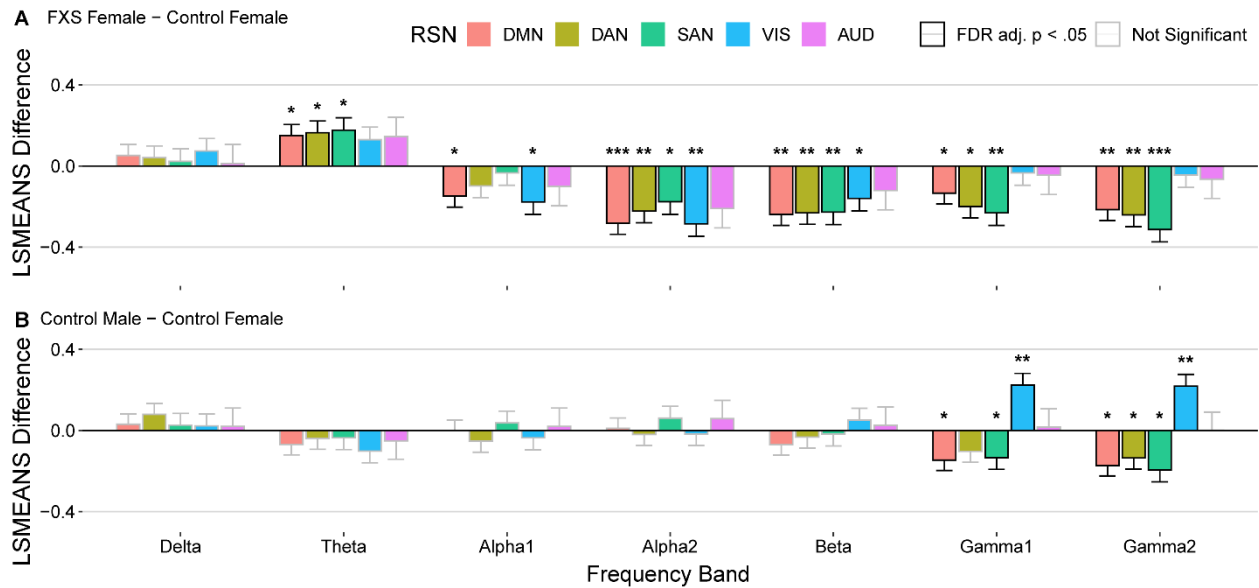
### Figure S4. Sex and Group Differences in Cortical Regions by Frequency Band

Estimated differences in log relative power per cortical region by frequency band with each subplot depicting within and between group sex differences. Estimates represent LSMeans  $\pm$  SEM of a significant fourth order interaction between from a linear mixed effect model assessing variation in log relative power among group, sex, cortical region, and frequency band factors with the random effect as subject ( $n=141$ ),  $F_{24,66839}=3.94$ ,  $p < 1 \times 10^{-4}$ . FDR adjusted significant contrasts indicated with asterisks (\*,  $p < .05$ ; \*\*,  $p < .001$ ; \*\*\*,  $p < 1 \times 10^{-5}$ ). See table S15 for description of nodes within each region.



**Figure S5. Obligate mosaicism present in Fmr1 in females with FXS may attenuate elevated gamma power observed in males with FXS.**

Bar plots depicting group-level difference (mean  $\pm$  standard error) of FXS males - FXS females of log-normalized relative power of functional resting state networks (RSNs) calculated from least-square mean estimates. Full statistical model controls for sex differences with the inclusion of age- and gender-matched controls and subject as a random effect. Black outlined bars indicate frequency band and network pair differences are statistically significant (\*,  $p < .05$ ; \*\*,  $p < .001$ , \*\*\*,  $p < 1 \times 10^{-5}$ ; FDR corrected) and gray outlined bars did not reach statistical significance. DMN, default mode network; DAN, dorsal attention network; SAN, salient affective network; VIS, visual attention network; AUD, auditory network. Per each frequency band, significant positive estimates indicate greater relative power in FXS males and significant negative estimates indicate greater power in FXS females.





Supplemental Tables

**Table S1: Additional Clinical Characteristics by Group**

Comparison of detailed demographic and clinical features of EEG dataset by group. FSIQ, Full Scale IQ, NVIQ, Non-verbal intelligence scale; VIQ, verbal intelligence scale; SCQ, Social Communication Questionnaire; WJ-3, Woodcock III Tests of Cognitive Abilities; ADAMS, Anxiety, Depression, and Mood Scale; t, t-statistic following independent Student t-tests; p, unadjusted significance; adj. p, p-value following Bonferroni correction.

Measure	FXS (n=70)	TDC (n=71)	t	p	adj. p.
Age (Years)	20.5+/-10.0	22.2+/-10.7	<.001	.35	.70
Sex (Female)	F: 32 M: 38	F: 30 M: 41	.17	.72	.72
FSIQ	49.5+/-30.2	103.2+/-9.2	<.001	<.001	<.001
SCQ	13.6+/-7.7	2.1+/-2.2	9.94	<.001	<.001
WJ-III	67.8+/-15.7	94.1+/-12.1	<.001	<.001	<.001
ADAMS-Anxiety	7.2+/-5.0	2.1+/-2.6	6.37	<.001	<.001
ADAMS-OCD	2.3+/-2.5	.4+/-1.1	5.12	<.001	<.001

**Table S2: Alterations in relative power are significantly correlated with disease relevant clinical measures.**

For each subject, mean relative power by frequency band was computed from cortical envelope regions representing significant FXS-TDC differences (**see Figure 1**). A: Spearman correlation of all FXS subjects. All possible correlations were 5% FDR corrected and surviving correlations were adjusted for age.

A.	Frequency	Measure	Spearman's rho			Age-adjusted		n
			rho	p	FDR p	rho	p	
alpha1		Age (Years)	.46	<0.001	0.002			70
		ADAMS-OCD	-.43	<0.001	0.006	-.42	<0.001	64
		ABC-Hyperactivity	-.40	0.001	0.018	-.31	0.016	61
alpha2		Age (Years)	.31	0.009	0.045			70
		SCQ	-.34	0.007	0.043	-.33	0.010	62
		ADAMS-OCD	-.46	<0.001	0.004	-.43	<0.001	64
		ABC-Stereotypy	-.34	0.008	0.045	-.29	0.023	61
		ABC-Irritability	-.35	0.006	0.043	-.28	0.027	61
gamma1		Age (Years)	.33	0.005	0.043			70
		NVIQ	-.40	0.001	0.017	-.27	0.028	64
		ABC-Hyperactivity	-.34	0.006	0.043	-.30	0.018	61
gamma2		Age (Years)	.31	0.008	0.045			70
		NVIQ	-.35	0.005	0.043	-.21	0.096	64

**Table S3: DK Atlas Nodal Group Comparison**

Significant (FDR corrected  $p < 0.05$ ) mean differences between FXS participants and controls of nodal log relative power by frequency band. Estimate (Est.) represents FXS – TDC (positive values indicate FXS > TDC). MNI coordinates indicate the centroid position of the region of interest. Abbreviations: L, Left; R, Right; C, Central; L, Lingula; P, Parietal; T, Temporal; t, t-value; PF, prefrontal; MNI, Montreal Neurological Institute template X, Y, Z coordinates; STS, superior temporal sulcus.

Frequency	Side	Region	Node	MNI			tValue	Est.	FDR p
				X	Y	Z			
theta	L	LC	paracentral	-7	-30	57	4.2	.33	4.7e-04
	R	RC	paracentral	7	-27	57	4.1	.33	5.8e-04
	L	LL	posterior cingulate	-5	-15	38	4.1	.32	6.6e-04
	R	RL	posterior cingulate	5	-17	39	4.1	.32	7.0e-04
	R	RP	precuneus	10	-58	38	3.9	.31	1.2e-03
	L	LP	precuneus	-9	-59	38	3.9	.31	1.3e-03
	R	RL	isthmus cingulate	6	-42	19	3.8	.30	1.8e-03
	L	LL	isthmus cingulate	-7	-45	18	3.7	.29	2.1e-03
	R	RP	superior parietal	24	-65	51	3.6	.29	2.6e-03
	L	LP	superior parietal	-23	-65	50	3.6	.29	2.8e-03
	L	LC	precentral	-41	-9	46	3.4	.27	4.5e-03
	L	LC	postcentral	-46	-22	45	3.3	.26	6.5e-03
	L	LF	caudal middle frontal	-37	11	47	3.3	.26	6.5e-03
	R	RC	precentral	40	-7	46	3.1	.25	1.1e-02

Frequency	Side	Region	Node	MNI			tValue	Est.	FDR p
				X	Y	Z			
	L	LL	caudal anterior cingulate	-5	21	26	3.1	.24	1.1e-02
	R	RO	cuneus	8	-78	20	3.1	.24	1.1e-02
	L	LO	cuneus	-6	-80	19	3.1	.24	1.1e-02
	R	RL	caudal anterior cingulate	4	22	27	3.0	.24	1.2e-02
	R	RC	postcentral	44	-20	46	3.0	.24	1.3e-02
	L	LP	inferior parietal	-42	-71	32	3.0	.24	1.3e-02
	R	RF	caudal middle frontal	37	13	48	3.0	.24	1.4e-02
	R	RP	inferior parietal	46	-63	32	2.9	.23	1.6e-02
	L	LT	insula	-38	-2	2	2.9	.23	1.7e-02
	L	LP	supramarginal	-57	-38	34	2.8	.22	2.0e-02
	L	LF	superior frontal	-12	30	41	2.8	.22	2.2e-02
	R	RP	supramarginal	54	-31	36	2.7	.22	2.3e-02
	L	LT	transverse temporal	-46	-23	10	2.7	.21	2.5e-02
	R	RF	superior frontal	12	32	41	2.6	.21	3.0e-02
	L	LF	pars opercularis	-49	17	14	2.6	.21	3.1e-02
alpha1	L	LT	temporal pole	-28	14	-38	-4.3	-.34	4.2e-04
	L	LT	entorhinal	-26	-5	-33	-3.9	-.31	1.1e-03
	R	RT	entorhinal	23	-6	-35	-3.8	-.30	1.7e-03

Frequency	Side	Region	Node	MNI			tValue	Est.	FDR p
				X	Y	Z			
	R	RT	temporal pole	27	16	-	-3.8	-.30	1.7e-03
						36			
	L	LPF	lateral orbitofrontal	-	30	-	-3.6	-.29	2.6e-03
				25		19			
	L	LPF	medial orbitofrontal	-7	33	-	-3.6	-.29	2.8e-03
						17			
	L	LT	parahippocampal	-	-	-	-3.5	-.28	4.0e-03
				26	29	21			
	R	RPF	medial orbitofrontal	4	37	-	-3.4	-.27	4.5e-03
						15			
	R	RT	parahippocampal	24	-	-	-3.3	-.26	5.9e-03
					30	19			
	R	RPF	Lateral orbitofrontal	23	32	-	-3.3	-.26	5.9e-03
						19			
	R	RT	middle temporal	58	-	-	-3.2	-.25	8.7e-03
					22	15			
	R	RL	isthmus cingulate	6	-	19	-3.1	-.25	9.6e-03
						42			
	L	LL	isthmus cingulate	-7	-	18	-3.1	-.24	1.1e-02
						45			
	R	RT	superior temporal	54	-6	-7	-3.1	-.24	1.1e-02
	R	RT	transverse temporal	46	-	9	-3.1	-.24	1.1e-02
						17			
	R	RT	fusiform	35	-	-	-3.0	-.24	1.2e-02
					41	23			
	R	RT	inferior temporal	51	-	-	-3.0	-.24	1.3e-02
					32	25			
	R	RO	cuneus	8	-	20	-2.9	-.23	1.5e-02
						78			
	L	LO	cuneus	-6	-	19	-2.9	-.23	1.5e-02
						80			
	L	LT	fusiform	-	-	-	-2.9	-.23	1.6e-02
				36	43	22			
	R	RT	insula	36	2	-2	-2.8	-.22	2.0e-02

Frequency	Side	Region	Node	MNI			tValue	Est.	FDR p
				X	Y	Z			
	R	RP	precuneus	10	-	38	-2.8	-.22	2.1e-02
					58				
	L	LP	precuneus	-9	-	38	-2.8	-.22	2.1e-02
					59				
	R	RO	lingual	13	-	-4	-2.8	-.22	2.2e-02
					67				
	L	LT	middle temporal	-	-	-	-2.8	-.22	2.2e-02
				58	23	15			
	L	LO	lingual	-	-	-5	-2.8	-.22	2.2e-02
				14	71				
	L	LT	inferior temporal	-	-	-	-2.7	-.21	2.5e-02
				53	36	22			
	R	RT	Banks of STS	54	-	10	-2.7	-.21	2.5e-02
					41				
	L	LT	superior temporal	-	-	-4	-2.7	-.21	2.6e-02
				55	12				
	R	RO	pericalcarine	12	-	7	-2.7	-.21	2.6e-02
					80				
	L	LO	pericalcarine	-	-	6	-2.6	-.21	2.9e-02
				11	82				
	L	LT	insula	-	-2	2	-2.6	-.21	3.0e-02
				38					
	R	RP	superior parietal	24	-	51	-2.6	-.21	3.1e-02
					65				
	L	LL	rostral anterior cingulate	-5	39	1	-2.6	-.20	3.2e-02
	L	LT	transverse temporal	-	-	10	-2.6	-.20	3.3e-02
				46	23				
	R	RPF	frontal pole	7	68	-	-2.4	-.19	4.5e-02
					15				
	R	RC	postcentral	44	-	46	-2.4	-.19	4.6e-02
					20				
	R	RP	supramarginal	54	-	36	-2.4	-.19	4.6e-02
					31				

Frequency	Side	Region	Node	MNI			tValue	Est.	FDR p
				X	Y	Z			
	R	RPF	pars orbitalis	43	42	-15	-2.4	-.19	4.9e-02
alpha2	L	LC	paracentral	-7	-30	57	-6.3	-.50	2.0e-06
	L	LL	posterior cingulate	-5	-15	38	-6.1	-.48	2.4e-06
	R	RL	posterior cingulate	5	-17	39	-6.0	-.48	2.4e-06
	R	RC	paracentral	7	-27	57	-5.9	-.47	2.5e-06
	L	LL	isthmus cingulate	-7	-45	18	-5.6	-.44	1.0e-05
	R	RL	isthmus cingulate	6	-42	19	-5.6	-.44	1.0e-05
	L	LP	precuneus	-9	-59	38	-5.3	-.42	3.5e-05
	L	LL	Caudal anterior cingulate	-5	21	26	-5.2	-.41	4.1e-05
	R	RP	Precuneus	10	-58	38	-5.2	-.41	4.1e-05
	R	RC	Postcentral	44	-20	46	-5.1	-.41	5.0e-05
	R	RL	Caudal anterior cingulate	4	22	27	-5.1	-.40	5.8e-05
	R	RC	precentral	40	-7	46	-5.0	-.40	6.4e-05
	R	RT	transverse temporal	46	-17	9	-5.0	-.40	6.4e-05
	L	LP	superior parietal	-23	-65	50	-5.0	-.39	6.7e-05
	L	LPF	medial orbitofrontal	-7	33	-17	-4.9	-.39	6.8e-05
	L	LT	temporal pole	-28	14	-38	-4.9	-.39	6.8e-05
	R	RPF	medial orbitofrontal	4	37	-15	-4.9	-.39	6.8e-05

Frequency	Side	Region	Node	MNI			tValue	Est.	FDR p
				X	Y	Z			
	R	RP	superior parietal	24	-	51	-4.9	-.39	7.1e-05
					65				
	R	RT	temporal pole	27	16	-	-4.9	-.39	7.1e-05
					36				
	L	LC	precentral	-	-9	46	-4.9	-.39	7.2e-05
				41					
	R	RL	rostral anterior cingulate	4	38	3	-4.8	-.38	8.0e-05
	L	LC	postcentral	-	-	45	-4.8	-.38	8.2e-05
				46	22				
	R	RT	entorhinal	23	-6	-	-4.8	-.38	8.4e-05
					35				
	L	LL	Rostral anterior cingulate	-5	39	1	-4.8	-.38	8.9e-05
	R	RT	parahippocampal	24	-	-	-4.8	-.38	8.9e-05
					30	19			
	L	LT	entorhinal	-	-5	-	-4.7	-.37	1.1e-04
				26		33			
	L	LPF	lateral orbitofrontal	-	30	-	-4.7	-.37	1.1e-04
				25		19			
	R	RP	supramarginal	54	-	36	-4.7	-.37	1.1e-04
					31				
	R	RPF	lateral orbitofrontal	23	32	-	-4.7	-.37	1.1e-04
					19				
	L	LT	parahippocampal	-	-	-	-4.6	-.37	1.2e-04
				26	29	21			
	L	LT	insula	-	-2	2	-4.6	-.37	1.4e-04
				38					
	R	RT	insula	36	2	-2	-4.6	-.37	1.4e-04
	L	LT	transverse temporal	-	-	10	-4.6	-.36	1.5e-04
				46	23				
	R	RO	cuneus	8	-	20	-4.5	-.36	1.6e-04
					78				
	L	LO	cuneus	-6	-	19	-4.4	-.35	2.4e-04
					80				



Frequency	Side	Region	Node	MNI			tValue	Est.	FDR p
				X	Y	Z			
	R	RF	caudal middle frontal	37	13	48	-4.4	-.35	2.9e-04
	R	RT	middle temporal	58	-22	-15	-4.4	-.35	3.1e-04
	L	LP	inferior parietal	-42	-71	32	-4.3	-.34	3.3e-04
	L	LF	superior frontal	-12	30	41	-4.3	-.34	3.5e-04
	R	RT	superior temporal	54	-6	-7	-4.3	-.34	3.6e-04
	L	LF	caudal middle frontal	-37	11	47	-4.3	-.34	4.0e-04
	R	RP	inferior parietal	46	-63	32	-4.2	-.34	4.4e-04
	R	RT	inferior temporal	51	-32	-25	-4.2	-.33	5.4e-04
	L	LP	supramarginal	-57	-38	34	-4.1	-.33	5.7e-04
	R	RF	superior frontal	12	32	41	-4.1	-.33	5.8e-04
	R	RT	fusiform	35	-41	-23	-4.1	-.33	6.2e-04
	R	RT	Bank of STS	54	-41	10	-4.1	-.33	6.2e-04
	R	RO	lingual	13	-67	-4	-3.9	-.31	1.4e-03
	R	RO	pericalcarine	12	-80	7	-3.8	-.30	1.7e-03
	L	LT	banks of STS	-53	-45	8	-3.8	-.30	1.7e-03
	L	LT	fusiform	-36	-43	-22	-3.7	-.30	1.9e-03
	L	LO	lingual	-14	-71	-5	-3.7	-.30	2.0e-03
	L	LT	superior temporal	-55	-12	-4	-3.7	-.30	2.0e-03

Frequency	Side	Region	Node	MNI			tValue	Est.	FDR p
				X	Y	Z			
	L	LO	pericalcarine	-11	-82	6	-3.7	-.29	2.1e-03
	R	RPF	pars orbitalis	43	42	-15	-3.6	-.29	2.6e-03
	L	LT	middle temporal	-58	-23	-15	-3.6	-.28	3.2e-03
	L	LT	inferior temporal	-53	-36	-22	-3.6	-.28	3.2e-03
	R	RPF	frontalpole	7	68	-15	-3.5	-.28	3.5e-03
	L	LPF	frontal pole	-7	68	-11	-3.5	-.28	3.9e-03
	L	LF	pars opercularis	-49	17	14	-3.5	-.28	4.0e-03
	R	RF	pars opercularis	49	17	14	-3.4	-.27	5.5e-03
	R	RO	lateral occipital	35	-85	2	-3.3	-.26	5.9e-03
	L	LPF	pars orbitalis	-44	39	-14	-3.2	-.26	7.9e-03
	L	LF	parst riangularis	-47	32	1	-3.2	-.25	8.2e-03
	R	RF	pars triangularis	48	34	2	-3.2	-.25	8.7e-03
	L	LO	lateral occipital	-31	-89	0	-3.2	-.25	9.0e-03
	L	LF	rostral middle frontal	-34	47	17	-2.9	-.23	1.6e-02
	R	RF	rostra lmiddle frontal	34	48	17	-2.8	-.22	2.2e-02
beta	R	RPF	frontal pole	7	68	-15	-3.5	-.28	4.1e-03
	L	LPF	frontal pole	-7	68	-11	-3.4	-.27	4.5e-03
	R	RPF	medial orbitofrontal	4	37	-15	-3.2	-.25	9.0e-03

Frequency	Side	Region	Node	MNI			tValue	Est.	FDR p
				X	Y	Z			
	R	RPF	pars orbitalis	43	42	-15	-3.1	-.25	9.9e-03
	L	LPF	medial orbitofrontal	-7	33	-17	-3.1	-.25	1.0e-02
	L	LL	rostral anterior cingulate	-5	39	1	-2.9	-.23	1.6e-02
	L	LP	superior parietal	-23	-65	50	-2.9	-.23	1.6e-02
	L	LPF	lateral orbitofrontal	-25	30	19	-2.9	-.23	1.7e-02
	R	RPF	lateral orbitofrontal	23	32	19	-2.9	-.23	1.7e-02
	R	RT	temporal pole	27	16	36	-2.8	-.23	1.8e-02
	R	RL	rostral anterior cingulate	4	38	3	-2.8	-.22	2.2e-02
	R	RP	superior parietal	24	-65	51	-2.7	-.21	2.5e-02
	L	LPF	pars orbitalis	-44	39	14	-2.7	-.21	2.6e-02
	L	LT	temporal pole	-28	14	38	-2.7	-.21	2.6e-02
	R	RF	pars triangularis	48	34	2	-2.6	-.20	3.2e-02
gamma1	L	LT	Bank of STS	-53	-45	8	4.5	.36	1.6e-04
	R	RT	transverse temporal	46	-17	9	4.2	.33	5.4e-04
	R	RL	isthmus cingulate	6	-42	19	3.3	.26	6.4e-03
	L	LP	supramarginal	-57	-38	34	3.3	.26	6.5e-03
	L	LT	transverse temporal	-46	-23	10	3.2	.25	8.2e-03
	R	RT	parahippocampal	24	-30	-19	3.1	.24	1.1e-02

Frequency	Side	Region	Node	MNI			tValue	Est.	FDR p
				X	Y	Z			
	L	LL	isthmus cingulate	-7	-	18	3.0	.24	1.2e-02
					45				
	R	RT	Bank of STS	54	-	10	2.9	.23	1.7e-02
					41				
	L	LT	middle temporal	-	-	-	2.7	.22	2.4e-02
				58	23	15			
	L	LT	inferior temporal	-	-	-	2.7	.22	2.4e-02
				53	36	22			
	L	LT	superior temporal	-	-	-4	2.7	.21	2.7e-02
				55	12				
	L	LT	fusiform	-	-	-	2.5	.20	4.1e-02
				36	43	22			
	R	RP	supramarginal	54	-	36	2.4	.19	4.6e-02
					31				
	R	RC	postcentral	44	-	46	2.4	.19	4.6e-02
					20				
	L	LT	parahippocampal	-	-	-	2.4	.19	4.6e-02
				26	29	21			
gamma2	L	LT	Bank of STS	-	-	8	4.4	.35	3.0e-04
				53	45				
	R	RT	transverse temporal	46	-	9	3.8	.30	1.5e-03
					17				
	L	LT	transverse temporal	-	-	10	3.4	.27	4.8e-03
				46	23				
	L	LP	supramarginal	-	-	34	3.2	.26	7.9e-03
				57	38				
	R	RT	bank of STS	54	-	10	3.1	.24	1.1e-02
					41				
	L	LT	superior temporal	-	-	-4	2.9	.23	1.7e-02
				55	12				
	R	RT	parahippocampal	24	-	-	2.8	.22	1.9e-02
					30	19			
	L	LT	middle temporal	-	-	-	2.8	.22	2.0e-02
				58	23	15			

Frequency	Side	Region	Node	MNI			tValue	Est.	FDR p
				X	Y	Z			
	L	LPF	frontal pole	-7	68	-11	-2.6	-.21	2.9e-02
	R	RPF	frontal pole	7	68	15	-2.6	-.20	3.2e-02
	L	LT	inferior temporal	-53	-36	-22	2.6	.20	3.2e-02
	R	RL	isthmus cingulate	6	-42	19	2.5	.20	4.0e-02
	R	RT	superior temporal	54	-6	-7	2.4	.19	4.4e-02

**Table S4: Regional sex and group differences in source-localized relative power by frequency band**

Group and sex differences in relative power between FXS and controls by cortical region. A total of 68 DK atlas nodes are organized into cortical regions (central, frontal, occipital, parietal, and temporal). Following FDR correction of all possible comparisons, four sets of a priori comparisons of interest are listed including 1) matched sex, between group (FXS versus control) and 2) matched group, between sex (M-F). FXS, Fragile X Syndrome; TDC, Typically Developing Control; F, female; M, male; Freq., frequency band; Est, Least-squares mean estimate; SEM, standard error of the mean; Sig., significance following 5% FDR correction: n.s., non-significant; \*, FDR  $p < .05$ ; \*\*, FDR  $p < 0.001$ ; \*\*\*, FDR  $p < 1 \times 10^{-5}$ .

Diff.	Freq.	Region	DF	Est.	SEM	t	FDR p	Sig.
FXS(M)- FXS(F)	Delta	Central	723	.02	.06	-.25	0.809	n.s.
		Frontal	277	.09	.05	-1.74	0.088	n.s.
		Occipital	531	-.03	.06	.53	0.609	n.s.
		Parietal	531	-.02	.06	.32	0.759	n.s.
		Temporal	219	.05	.05	-1.09	0.287	n.s.
	Theta	Central	723	.13	.06	-1.98	0.051	n.s.
		Frontal	277	-.05	.05	.93	0.366	n.s.
		Occipital	531	-.002	.06	.03	0.975	n.s.
		Parietal	531	.10	.06	-1.71	0.094	n.s.
		Temporal	219	-.002	.05	.05	0.965	n.s.
	Alpha1	Central	723	-.09	.06	1.37	0.179	n.s.
		Frontal	277	-.21	.05	4.11	<0.001	**
		Occipital	531	-.06	.06	1.10	0.281	n.s.
		Parietal	531	-.05	.06	.84	0.412	n.s.
		Temporal	219	-.18	.05	3.83	<0.001	**
	Alpha2	Central	723	-.27	.06	4.22	<0.001	**
		Frontal	277	-.20	.05	3.95	<0.001	**
		Occipital	531	-.04	.06	.60	0.556	n.s.
		Parietal	531	-.15	.06	2.49	0.014	*
		Temporal	219	-.18	.05	3.86	<0.001	**
Beta	Central	723	.26	.06	-3.99	<0.001	**	
	Frontal	277	.11	.05	-2.11	0.038	*	
	Occipital	531	.22	.06	-3.73	<0.001	**	
	Parietal	531	.14	.06	-2.32	0.022	*	
	Temporal	219	.18	.05	-3.74	<0.001	**	
Gamma1	Central	723	.42	.06	-6.51	<0.001	***	
	Frontal	277	.26	.05	-5.09	<0.001	***	
	Occipital	531	.48	.06	-8.17	<0.001	***	
	Parietal	531	.36	.06	-6.14	<0.001	***	

Diff.	Freq.	Region	DF	Est.	SEM	t	FDR p	Sig.
FXS(F)- TDC(F)	Gamma2	Temporal	219	.39	.05	-8.26	<0.001	***
		Central	723	.46	.06	-7.23	<0.001	***
		Frontal	277	.32	.05	-6.27	<0.001	***
		Occipital	531	.40	.06	-6.76	<0.001	***
		Parietal	531	.37	.06	-6.26	<0.001	***
	Delta	Temporal	219	.43	.05	-8.98	<0.001	***
		Central	723	.01	.07	.13	0.897	n.s.
		Frontal	277	.05	.05	.92	0.369	n.s.
		Occipital	531	.08	.06	1.23	0.230	n.s.
		Parietal	531	.03	.06	.48	0.639	n.s.
	Theta	Temporal	219	.04	.05	.77	0.455	n.s.
		Central	723	.16	.07	2.41	0.017	*
		Frontal	277	.16	.05	3.01	0.003	*
		Occipital	531	.12	.06	2.00	0.050	*
		Parietal	531	.15	.06	2.44	0.016	*
	Alpha1	Temporal	219	.15	.05	2.94	0.004	*
		Central	723	-.05	.07	-.74	0.468	n.s.
		Frontal	277	-.08	.05	-1.52	0.137	n.s.
		Occipital	531	-.18	.06	-2.84	0.005	*
		Parietal	531	-.07	.06	-1.18	0.250	n.s.
	Alpha2	Temporal	219	-.14	.05	-2.73	0.007	*
		Central	723	-.20	.07	-3.00	0.003	*
		Frontal	277	-.22	.05	-4.09	<0.001	**
		Occipital	531	-.28	.06	-4.53	<0.001	***
		Parietal	531	-.20	.06	-3.27	0.001	*
	Beta	Temporal	219	-.26	.05	-5.12	<0.001	***
		Central	723	-.19	.07	-2.75	0.007	*
		Frontal	277	-.31	.05	-5.79	<0.001	***
Occipital		531	-.16	.06	-2.61	0.010	*	
Parietal		531	-.20	.06	-3.21	0.002	*	
Gamma1	Temporal	219	-.18	.05	-3.53	<0.001	**	
	Central	723	-.16	.07	-2.29	0.024	*	
	Frontal	277	-.33	.05	-6.17	<0.001	***	
	Occipital	531	-.04	.06	-.72	0.483	n.s.	
	Parietal	531	-.13	.06	-2.00	0.049	*	
Gamma2	Temporal	219	-.07	.05	-1.41	0.166	n.s.	
	Central	723	-.31	.07	-4.54	<0.001	***	
	Frontal	277	-.39	.05	-7.35	<0.001	***	
	Occipital	531	-.06	.06	-.91	0.374	n.s.	
	Parietal	531	-.24	.06	-3.88	<0.001	**	
FXS(M)- TDC(M)	Delta	Temporal	219	-.12	.05	-2.37	0.020	*
		Central	723	.11	.06	1.76	0.084	n.s.
		Frontal	277	.04	.05	.88	0.393	n.s.
		Occipital	531	.05	.06	.83	0.417	n.s.

Diff.	Freq.	Region	DF	Est.	SEM	t	FDR p	Sig.
TDC(M)- TDC(F)	Theta	Parietal	531	.12	.06	2.08	0.041	*
		Temporal	219	.05	.04	1.21	0.236	n.s.
		Central	723	.37	.06	6.20	<0.001	***
		Frontal	277	.14	.05	3.04	0.003	*
		Occipital	531	.23	.06	4.19	<0.001	**
	Alpha1	Parietal	531	.35	.06	6.27	<0.001	***
		Temporal	219	.21	.04	4.66	<0.001	***
		Central	723	-.25	.06	-4.18	<0.001	**
		Frontal	277	-.24	.05	-5.08	<0.001	***
		Occipital	531	-.23	.06	-4.16	<0.001	**
	Alpha2	Parietal	531	-.28	.06	-4.95	<0.001	***
		Temporal	219	-.31	.04	-6.88	<0.001	***
		Central	723	-.60	.06	-10.00	<0.001	***
		Frontal	277	-.38	.05	-8.03	<0.001	***
		Occipital	531	-.32	.06	-5.74	<0.001	***
	Beta	Parietal	531	-.51	.06	-9.10	<0.001	***
		Temporal	219	-.46	.04	-10.33	<0.001	***
		Central	723	.002	.06	.02	0.981	n.s.
		Frontal	277	-.08	.05	-1.73	0.090	n.s.
		Occipital	531	.001	.06	.02	0.984	n.s.
	Gamma1	Parietal	531	-.07	.06	-1.21	0.237	n.s.
		Temporal	219	.01	.04	.18	0.862	n.s.
		Central	723	.34	.06	5.60	<0.001	***
		Frontal	277	.18	.05	3.80	<0.001	**
		Occipital	531	.20	.06	3.62	<0.001	**
	Gamma2	Parietal	531	.30	.06	5.46	<0.001	***
		Temporal	219	.35	.04	7.88	<0.001	***
		Central	723	.36	.06	6.01	<0.001	***
		Frontal	277	.20	.05	4.15	<0.001	**
		Occipital	531	.11	.06	1.93	0.058	n.s.
	Delta	Parietal	531	.28	.06	4.96	<0.001	***
		Temporal	219	.36	.04	8.10	<0.001	***
		Central	723	-.08	.06	1.26	0.218	n.s.
Frontal		277	.10	.05	-1.89	0.063	n.s.	
Occipital		531	-.001	.06	.01	0.993	n.s.	
Theta	Parietal	531	-.10	.06	1.75	0.085	n.s.	
	Temporal	219	.04	.05	-.76	0.457	n.s.	
	Central	723	-.08	.06	1.28	0.211	n.s.	
	Frontal	277	-.03	.05	.60	0.561	n.s.	
	Occipital	531	-.11	.06	1.85	0.069	n.s.	
		Parietal	531	-.09	.06	1.59	0.119	n.s.



Diff.	Freq.	Region	DF	Est.	SEM	t	FDR p	Sig.
		Temporal	219	-.06	.05	1.30	0.204	n.s.
	Alpha1	Central	723	.11	.06	-1.77	0.083	n.s.
		Frontal	277	-.05	.05	.95	0.355	n.s.
		Occipital	531	-.01	.06	.21	0.843	n.s.
		Parietal	531	.15	.06	-2.56	0.012	*
	Alpha2	Temporal	219	-.01	.05	.27	0.797	n.s.
		Central	723	.13	.06	-1.99	0.051	n.s.
		Frontal	277	-.04	.05	.75	0.466	n.s.
		Occipital	531	-.001	.06	.02	0.982	n.s.
		Parietal	531	.15	.06	-2.59	0.011	*
	Beta	Temporal	219	.02	.05	-.41	0.693	n.s.
		Central	723	.07	.06	-1.05	0.303	n.s.
		Frontal	277	-.12	.05	2.39	0.019	*
		Occipital	531	.06	.06	-.95	0.356	n.s.
		Parietal	531	.003	.06	-.05	0.959	n.s.
	Gamma1	Temporal	219	-.01	.05	.17	0.873	n.s.
		Central	723	-.07	.06	1.18	0.250	n.s.
		Frontal	277	-.25	.05	5.01	<0.001	***
		Occipital	531	.24	.06	-4.01	<0.001	**
		Parietal	531	-.06	.06	1.09	0.285	n.s.
	Gamma2	Temporal	219	-.03	.05	.63	0.539	n.s.
		Central	723	-.21	.06	3.22	0.002	*
		Frontal	277	-.27	.05	5.39	<0.001	***
		Occipital	531	.24	.06	-3.98	<0.001	**
		Parietal	531	-.15	.06	2.50	0.014	*
		Temporal	219	-.05	.05	1.13	0.271	n.s.

**Table S5: Mean Alpha Shift (alpha1/alpha2 power) by group and sex.**

Group	n	Occipital	Parietal	Central	Frontal
FXS (F)	32	1.41(0.36)	1.55(0.58)	1.74(0.90)	1.69(0.71)
FXS (M)	38	1.36(0.27)	1.64(0.37)	1.93(0.61)	1.66(0.49)
Control (F)	30	1.32(0.57)	1.40(0.64)	1.49(0.80)	1.46(0.64)
Control (M)	41	1.31(0.57)	1.43(0.77)	1.48(0.81)	1.41(0.52)

**Table S6: Differences in alpha shift across cortical regions by group and sex.**

Sex	Contrast	Group	Estimate	SE	DF	t	FDR p	d	sig
F	Central - Frontal	FXS	-0.017	0.016	4359	-1.1	3.1e-1	-0.03	n.s.
		TDC	-0.015	0.016	4359	-0.9	3.8e-1	-0.03	n.s.
	Central - Occipital	FXS	0.115	0.016	4359	7.0	9.2e-12	0.21	***
		TDC	0.069	0.017	4359	4.0	1.1e-4	0.12	**
	Central - Parietal	FXS	0.054	0.016	4359	3.3	1.6e-3	0.10	*
		TDC	0.032	0.017	4359	1.9	7.1e-2	0.06	n.s.
	Frontal - Occipital	FXS	0.132	0.014	4359	9.2	3.3e-19	0.28	***
		TDC	0.083	0.015	4359	5.6	6.3e-8	0.17	***
	Frontal - Parietal	FXS	0.071	0.014	4359	4.9	2.2e-6	0.15	***
		TDC	0.047	0.015	4359	3.2	2.4e-3	0.10	*
	Occipital - Parietal	FXS	-0.061	0.015	4359	-4.0	1.1e-4	-0.12	**
		TDC	-0.036	0.016	4359	-2.3	2.8e-2	-0.07	*
M	Central - Frontal	FXS	0.144	0.014	4359	10.0	1.9e-22	0.30	***
		TDC	-0.018	0.014	4359	-1.3	2.2e-1	-0.04	n.s.
	Central - Occipital	FXS	0.327	0.015	4359	21.7	6.2e-98	0.66	***
		TDC	0.065	0.014	4359	4.5	1.4e-5	0.14	***
	Central - Parietal	FXS	0.138	0.015	4359	9.2	2.7e-19	0.28	***
		TDC	0.020	0.014	4359	1.4	2.0e-1	0.04	n.s.
	Frontal - Occipital	FXS	0.183	0.013	4359	13.8	1.2e-41	0.42	***
		TDC	0.083	0.013	4359	6.6	1.9e-10	0.20	***

Sex	Contrast	Group	Estimate	SE	DF	t	FDR p	d	sig
	Frontal - Parietal	FXS	-0.005	0.013	4359	-0.4	6.9e-1	-0.01	n.s.
		TDC	0.038	0.013	4359	3.0	3.8e-3	0.09	*
	Occipital - Parietal	FXS	-0.188	0.014	4359	-13.5	6.7e-40	-0.41	***
		TDC	-0.045	0.013	4359	-3.4	1.3e-3	-0.10	*

**Table S7: Statistical comparison of FXS-TDC differences in alpha shift between regions.**

Each row represents a between sex-matched group comparison of within group contrasts presented in Table S4.

Sex	Contrast	Estimate	SE	DF	t	FDR p	d	Sig.
F	Central-Frontal	-.002	.023	4359	-0.094	9.4e-1	-.003	n.s.
	Occipital-Central	-.05	.024	4359	-1.973	8.3e-2	-.06	n.s.
	Central-Parietal	.02	.024	4359	0.919	4.2e-1	.03	n.s.
	Occipital-Frontal	-.05	.021	4359	-2.349	3.8e-2	-.07	*
	Frontal-Parietal	.02	.021	4359	1.149	3.2e-1	.03	n.s.
	Occipital-Parietal	-.02	.022	4359	-1.138	3.2e-1	-.03	n.s.
M	Central-Frontal	.16	.020	4359	8.097	8.9e-15	.25	***
	Occipital-Central	-.26	.021	4359	-12.511	6.4e-34	-.38	***
	Central-Parietal	.12	.021	4359	5.663	1.2e-7	.17	***
	Occipital-Frontal	-.10	.018	4359	-5.430	3.8e-7	-.16	***
	Frontal-Parietal	-.04	.018	4359	-2.367	3.7e-2	-.07	*
	Occipital-Parietal	-.14	.019	4359	-7.396	1.8e-12	-.22	***

## Clinical Correlations of Cognitive and Sensory Resting State Networks

Spearman clinical correlations were assessed in all FXS participants and in non-mosaic, full mutation males as separate cohorts by resting state network (RSN). Correlation was calculated between clinical measures (non-verbal intelligence quotient (NVIQ), ADAMS Anxiety Scale, ADAMS OCD scale, Social Communication Questionnaire (SCQ), and Woodcock Johnson Test of Auditory Attention (WJ3)) between lower (theta, alpha1, and alpha2) and higher (beta, gamma1, gamma2) frequency bands. After correcting results by 5% FDR correction, we then adjusted significant results for age. Only significant age-corrected correlations ( $p < .05$ ) are presented below with total tests noted.

### Cognitive Network Clinical Correlations

**Table S9: Default Mode Network**

#### Higher Frequency Bands

All FXS Subjects

		6/45 (# Significant / Total Tests)					
All FXS subjects		FDR Corrected			Age Corrected		
Node	Frequency	rho	p	FDR p	rho	p	n
Parahippocampal L	gamma1	-.45	2e-04	.006	-.52	0.012	64
Parahippocampal R	beta	-.40	.001	.010	-.50	0.018	64
Parahippocampal L	beta	-.38	.002	.015	-.48	0.025	64
	gamma2	-.37	.003	.016	-.47	0.029	64
Isthmus Cingulate R	beta	-.33	.007	.027	-.49	0.020	64
Precuneus L	beta	-.32	.011	.037	-.47	0.028	64

Full mutation males

		3/45 (# Significant / Total Tests)					
Full mutation males only		FDR Corrected			Age Corrected		
Node	Frequency	rho	p	FDR p	rho	p	n

B: Non-verbal IQ (Higher is better)		3/45 (# Significant / Total Tests)					
Full mutation males only		FDR Corrected			Age Corrected		
Node	Frequency	rho	p	FDR p	rho	p	n
Parahippocampal L	beta	-.62	.002	.046	-.48	0.025	22
	gamma1	-.63	.002	.046	-.52	0.012	22
Parahippocampal R	beta	-.60	.003	.049	-.50	0.018	22

### Lower Frequency Bands

All FXS Subjects

C: ADAMS OCD Scale (Higher is worse)		8/45 (# Significant / Total Tests)					
All FXS subjects		FDR Corrected			Age Corrected		
Node	Frequency	rho	p	FDR p	rho	p	n
Lateral Orbitofrontal L	alpha2	-.47	1e-04	.001	-.41	0.035	64
Medial Orbitofrontal L	alpha2	-.49	4e-05	.001	-.46	0.016	64
Medial Orbitofrontal R	alpha2	-.47	1e-04	.001	-.44	0.020	64
Parahippocampal L	alpha1	-.43	3e-04	.002	-.47	0.013	64
Lateral Orbitofrontal R	alpha2	-.44	2e-04	.002	-.40	0.040	64
Parahippocampal L	alpha2	-.39	.001	.003	-.44	0.023	64
Lateral Orbitofrontal R	theta	-.32	.011	.019	-.40	0.036	64
Medial Orbitofrontal L	theta	-.29	.021	.032	-.39	0.045	64

D: SCQ (Higher is worse)		6/45 (# Significant / Total Tests)					
All FXS subjects		FDR Corrected			Age Corrected		
Node	Frequency	rho	p	FDR p	rho	p	n
Medial Orbitofrontal R	alpha1	-.48	1e-04	.001	-.43	0.038	62
	alpha2	-.50	4e-05	.001	-.46	0.023	62
Lateral Orbitofrontal R	alpha1	-.43	4e-04	.002	-.42	0.039	62
	alpha2	-.44	4e-04	.002	-.46	0.023	62
Rostral Anterior Cingulate R	alpha1	-.36	.004	.011	-.41	0.045	62
Caudal Anterior Cingulate R	alpha1	-.29	.020	.041	-.43	0.037	62

Full mutation males

E: ADAMS Anxiety Scale (Higher is worse)		2/45 (# Significant / Total Tests)						
Full mutation males only				FDR Corrected		Age Corrected		
Node	Frequency	rho	p	FDR p	rho	p	n	
Parahippocampal L	alpha2	-.64	3e-04	.015	-.56	0.003	27	
Parahippocampal R	alpha2	-.58	.002	.037	-.49	0.009	27	

F: ADAMS OCD Scale (Higher is worse)		2/45 (# Significant / Total Tests)						
Full mutation males only				FDR Corrected		Age Corrected		
Node	Frequency	rho	p	FDR p	rho	p	n	
Parahippocampal L	alpha1	-.61	.001	.034	-.47	0.013	27	
	alpha2	-.58	.002	.034	-.44	0.023	27	

**Table S10: Dorsal Attention Network**

**Higher Frequency Bands**

All FXS Subjects

A: Non-verbal IQ (Higher is better)		9/33 (# Significant / Total Tests)						
All FXS subjects				FDR Corrected		Age Corrected		
Node	Frequency	rho	p	FDR p	rho	p	n	
Inferior Temporal R	beta	-.39	.002	.010	-.47	0.029	64	
Inferior Temporal L	gamma1	-.40	.001	.010	-.43	0.049	64	
Inferior Temporal R	gamma1	-.44	3e-04	.010	-.48	0.025	64	
Middle Temporal R	gamma1	-.38	.002	.010	-.46	0.031	64	
Inferior Temporal R	gamma2	-.39	.002	.010	-.48	0.022	64	
Middle Temporal R	gamma2	-.38	.002	.010	-.49	0.019	64	

A: Non-verbal IQ (Higher is better)							9/33 (# Significant / Total Tests)	
All FXS subjects			FDR Corrected			Age Corrected		
Node	Frequency	rho	p	FDR p	rho	p	n	
Middle Temporal L	gamma1	- .35	.004	.015	-.45	0.037	64	
Inferior Temporal L	gamma2	- .36	.004	.015	-.46	0.031	64	
Middle Temporal L	gamma2	- .34	.007	.017	-.48	0.024	64	

#### Full Mutation Males

B: Non-verbal IQ (Higher is better)							7/33 (# Significant / Total Tests)	
Full mutation males only			FDR Corrected			Age Corrected		
Node	Frequency	rho	p	FDR p	rho	p	n	
Inferior Temporal R	beta	-.56	.007	.047	-.47	0.029	22	
Inferior Temporal L	gamma1	-.53	.011	.047	-.43	0.049	22	
Inferior Temporal R	gamma1	-.56	.007	.047	-.48	0.025	22	
Middle Temporal L	gamma1	-.55	.008	.047	-.45	0.037	22	
Inferior Temporal L	gamma2	-.57	.005	.047	-.46	0.031	22	
Inferior Temporal R	gamma2	-.55	.008	.047	-.48	0.022	22	
Middle Temporal L	gamma2	-.54	.009	.047	-.48	0.024	22	

#### Lower Frequency Bands

##### All FXS Subjects

C: ADAMS OCD Scale (Higher is worse)							2/33 (# Significant / Total Tests)	
All FXS subjects			FDR Corrected			Age Corrected		
Node	Frequency	rho	p	FDR p	rho	p	n	
Inferior Temporal L	alpha1	-.40	.001	.007	-.50	0.008	64	
Middle Temporal L	alpha1	-.40	.001	.007	-.42	0.029	64	



D: Social Communication Questionnaire (Higher is worse)		5/33 (# Significant / Total Tests)					
All FXS subjects		FDR Corrected			Age Corrected		
Node	Frequency	rho	p	FDR p	rho	p	n
Pars Orbitalis R	alpha1	-.38	.002	.011	-.49	0.016	62
	alpha2	-.40	.001	.011	-.56	0.005	62
Pars Triangularis R	alpha1	-.36	.004	.013	-.42	0.041	62
	alpha2	-.37	.003	.013	-.49	0.016	62
Caudal Anterior Cingulate L	alpha1	-.30	.019	.038	-.45	0.028	62

#### Full Mutation Males

E: ADAMS Anxiety Scale (Higher is worse)		2/33 (# Significant / Total Tests)					
Full mutation males only		FDR Corrected			Age Corrected		
Node	Frequency	rho	p	FDR p	rho	p	n
Inferior Temporal L	alpha2	-.58	.001	.045	-.50	0.009	27
Inferior Temporal R	alpha2	-.53	.004	.049	-.47	0.014	27

F: ADAMS OCD Scale (Higher is worse)		1/33 (# Significant / Total Tests)					
Full mutation males only		FDR Corrected			Age Corrected		
Node	Frequency	rho	p	FDR p	rho	p	n
Inferior Temporal L	alpha1	-.63	5e-04	.016	-.50	0.008	27

**Table S11: Salience Network****Higher Frequency Bands**

All FXS Subjects

A: Non-verbal IQ (Higher is better)		3/24 (# Significant / Total Tests)						
All FXS subjects		FDR Corrected			Age Corrected			
Node	Frequency	rho	p	FDR p	rho	p	n	
Supramarginal L	gamma2	-.40	.001	.007	-.43	0.045	64	
	gamma1	-.37	.002	.008	-.43	0.047	64	
Insula R	gamma2	-.30	.015	.023	-.44	0.041	64	

**Lower Frequency Bands**

B: SCQ (Higher is worse)		2/24 (# Significant / Total Tests)						
All FXS subjects		FDR Corrected			Age Corrected			
Node	Frequency	rho	p	FDR p	rho	p	n	
Rostral Middle Frontal R	alpha2	-.35	.005	.017	-.41	0.048	62	
Caudal Middle Frontal L	alpha1	-.31	.015	.030	-.45	0.027	62	

**Sensory Network Clinical Correlations**

**Table S12: Auditory Network**

All FXS Subjects

A: Non-verbal IQ (Higher is better)		3/6 (# Significant / Total Tests)					
All FXS subjects		FDR Corrected			Age Corrected		
Node	Frequency	rho	p	FDR p	rho	p	n
Superior Temporal L	gamma1	-.33	.008	.015	-.44	0.043	64
Superior Temporal R	gamma2	-.35	.004	.015	-.43	0.045	64
Superior Temporal L	gamma2	-.32	.011	.017	-.49	0.019	64

Full Mutation Males

B: Non-verbal IQ (Higher is better)		3/6 (# Significant / Total Tests)					
Full mutation males only		FDR Corrected			Age Corrected		
Node	Frequency	rho	p	FDR p	rho	p	n
Superior Temporal L	gamma1	-	.018	.034	-.44	0.043	22
		.50					
Superior Temporal L	gamma2	-	.014	.034	-.49	0.019	22
		.52					
Superior Temporal R	gamma2	-	.022	.034	-.43	0.045	22
		.49					

**Table S13: Visual Network**

**Higher Frequency Bands**

All FXS Subjects

A: Non-verbal IQ (Higher is better)		11/24 (# Significant / Total Tests)					
All FXS subjects		FDR Corrected			Age Corrected		
Node	Frequency	rho	p	FDR p	rho	p	n

A: Non-verbal IQ (Higher is better)							11/24 (# Significant / Total Tests)	
All FXS subjects			FDR Corrected			Age Corrected		
Node	Frequency	rho	p	FDR p	rho	p	n	
Fusiform R	beta	-.42	.001	.002	-.51	0.014	64	
Lingual R	beta	-.43	4e-04	.002	-.45	0.035	64	
Lateral Occipital R	gamma1	-.42	.001	.002	-.49	0.020	64	
Lingual R	gamma1	-.42	.001	.002	-.50	0.019	64	
Fusiform L	gamma2	-.38	.002	.004	-.45	0.034	64	
Lateral Occipital R	gamma2	-.33	.008	.013	-.50	0.017	64	
Lingual R	gamma2	-.33	.008	.013	-.46	0.031	64	
Lingual L	gamma2	-.28	.024	.034	-.46	0.033	64	
Cuneus R	beta	-.28	.028	.037	-.46	0.032	64	
	gamma1	-.26	.035	.044	-.44	0.039	64	
Cuneus L	beta	-.26	.038	.046	-.43	0.047	64	

#### Full Mutation Males

B: Non-verbal IQ (Higher is better)							11/24 (# Significant / Total Tests)	
Full mutation males only			FDR Corrected			Age Corrected		
Node	Frequency	rho	p	FDR p	rho	p	n	
Cuneus R	beta	-.61	.003	.011	-.46	0.032	22	
Fusiform R	beta	-.61	.003	.011	-.51	0.014	22	
Lingual R	beta	-.63	.002	.011	-.45	0.035	22	

B: Non-verbal IQ (Higher is better)				11/24 (# Significant / Total Tests)			
Full mutation males only				FDR Corrected		Age Corrected	
Node	Frequency	rho	p	FDR p	rho	p	n
Lateral Occipital R	gamma1	-.64	.001	.011	-.49	0.020	22
	gamma2	-.62	.002	.011	-.50	0.017	22
Lingual R	gamma1	-.60	.003	.012	-.50	0.019	22
Cuneus L	beta	-.56	.007	.017	-.43	0.047	22
Lingual R	gamma2	-.55	.008	.017	-.46	0.031	22
Cuneus R	gamma1	-.54	.010	.019	-.44	0.039	22
Fusiform L	gamma2	-.54	.010	.019	-.45	0.034	22
Lingual L	gamma2	-.49	.021	.028	-.46	0.033	22

C: ADAMS Anxiety Scale (Higher is worse)				2/24 (# Significant / Total Tests)			
Full mutation males only				FDR Corrected		Age Corrected	
Node	Frequency	rho	p	FDR p	rho	p	n
Lingual L	beta	-.58	.001	.033	-.57	0.002	27
Lingual R	beta	-.55	.003	.036	-.55	0.003	27

### Lower Frequency Bands

All FXS Subjects

D: ADAMS OCD Scale (Higher is worse)				4/24 (# Significant / Total Tests)			
All FXS subjects				FDR Corrected		Age Corrected	
Node	Frequency	rho	p	FDR p	rho	p	n
Fusiform L	alpha1	-.42	.001	.009	-.47	0.014	64
Lingual R	alpha2	-.36	.004	.010	-.43	0.027	64
Fusiform L	alpha2	-.35	.005	.011	-.41	0.034	64
Lingual L	alpha2	-.31	.011	.020	-.46	0.016	64

Full Mutation Males

E: ADAMS Anxiety Scale (Higher is worse)				8/24 (# Significant / Total Tests)			
Full mutation males only				FDR Corrected		Age Corrected	

Node	Frequency	rho	p	FDR p	rho	p	n
Fusiform L	alpha2	-.63	4e-04	.011	-.56	0.002	27
Fusiform R	alpha2	-.57	.002	.012	-.54	0.004	27
Lingual L	alpha2	-.58	.002	.012	-.53	0.004	27
Lingual R	alpha2	-.59	.001	.012	-.56	0.002	27
Cuneus R	alpha2	-.53	.005	.023	-.45	0.019	27
Lateral Occipital R	alpha2	-.51	.007	.028	-.45	0.019	27
Fusiform R	alpha1	-.48	.012	.039	-.39	0.041	27
Cuneus L	alpha2	-.47	.013	.039	-.48	0.012	27

F: ADAMS OCD Scale (Higher is worse) 4/24 (# Significant / Total Tests)

Full mutation males only			FDR Corrected		Age Corrected		
Node	Frequency	rho	p	FDR p	rho	p	n
Fusiform L	alpha1	-.59	.001	.015	-.47	0.014	27
Lingual L	alpha2	-.59	.001	.015	-.46	0.016	27
Fusiform L	alpha2	-.56	.002	.016	-.41	0.034	27
Lingual R	alpha2	-.51	.006	.029	-.43	0.027	27

**Table S14: Resting state networks and their cortical nodes as attributed in the Desikan-Killiany (DK) atlas.**

Abbreviations: RSN, resting state networks; AUD, Auditory; DAN, Dorsal Attention Network; DMN, Default Mode Network; SAN, Salience Affective Network; VIS, Visual Network. Abbr., Abbreviation; Cortex, Cortical Region (Side: L, Left; R, right; Cortices: F, frontal; L, lingula; O, occipital; P, parietal; PF, prefrontal; T, temporal; Vert, total number of vertices composing node.

RSN	Node	Abbr.	Cortex	MNI Centroid			Vert.	
				x	y	z		
	Caudal Anterior Cingulate R	cACC R	RL	4	22	27	68	
	Isthmus Cingulate L	iCC L	LL	-7	-45	18	81	
	Isthmus Cingulate R	iCC R	RL	6	-42	19	91	
	Lateral Orbitofrontal L	LOF L	LPF	-25	30	-19	221	
	Lateral Orbitofrontal R	LOF R	RPF	23	32	-19	206	
	Medial Orbitofrontal L	MOF L	LPF	-7	33	-17	155	
	Medial Orbitofrontal R	MOF R	RPF	4	37	-15	170	
	DMN	Parahippocampal L	paraH L	LT	-26	-29	-21	68
Parahippocampal R		paraH R	RT	24	-30	-19	66	
Posterior Cingulate L		PCC L	LL	-5	-15	38	85	
Posterior Cingulate R		PCC R	RL	5	-17	39	93	
Precuneus L		PCUN L	LP	-9	-59	38	314	
Precuneus R		PCUN R	RP	10	-58	38	325	
Rostral Anterior Cingulate L		rACC L	LL	-5	39	1	78	
Rostral Anterior Cingulate R		rACC R	RL	4	38	3	56	
	Caudal Middle Frontal L	cMFG L	LF	-37	11	47	224	
	Caudal Middle Frontal R	cMFG R	RF	37	13	48	186	
	Insula L	INS L	LT	-38	-2	2	174	
	SAN	Insula R	INS R	RT	36	2	-2	196
		Rostral Middle Frontal L	rMFG L	LF	-34	47	17	543
		Rostral Middle Frontal R	rMFG R	RF	34	48	17	551
		Supramarginal L	SMAR L	LP	-57	-38	34	305

RSN	Node	Abbr.	Cortex	MNI Centroid			Vert.
				x	y	z	
	Supramarginal R	SMAR R	RP	54	-31	36	302
	Caudal Anterior Cingulate L	cACC L	LL	-5	21	26	48
	Inferior Temporal L	ITG L	LT	-53	-36	-22	307
	Inferior Temporal R	ITG R	RT	51	-32	-25	316
	Middle Temporal L	MTG L	LT	-58	-23	-15	277
	Middle Temporal R	MTG R	RT	58	-22	-15	324
DAN	Pars Opercularis L	pOPER L	LF	-49	17	14	139
	Pars Opercularis R	pOPER R	RF	49	17	14	118
	Pars Orbitalis L	pORB L	LPF	-44	39	-14	72
	Pars Orbitalis R	pORB R	RPF	43	42	-15	68
	Pars Triangularis L	pTRI L	LF	-47	32	1	101
	Pars Triangularis R	pTRI R	RF	48	34	2	148
AUD	Superior Temporal L	STG L	LT	-55	-12	-4	290
	Superior Temporal R	STG R	RT	54	-6	-7	257
	Cuneus L	CUN L	LO	-6	-80	19	93
	Cuneus R	CUN R	RO	8	-78	20	99
	Fusiform L	FUS L	LT	-36	-43	-22	268
	Fusiform R	FUS R	RT	35	-41	-23	255
VIS	Lateral Occipital L	LOG L	LO	-31	-89	0	371
	Lateral Occipital R	LOG R	RO	35	-85	2	367
	Lingual L	LING L	LO	-14	-71	-5	246
	Lingual R	LING R	RO	13	-67	-4	227
	Banks of Sup. Temp. Sulcus L	BSTS L	LT	-53	-45	8	76
	Banks of Sup. Temp. Sulcus R	BSTS R	RT	54	-41	10	70
other	Entorhinal L	ENT L	LT	-26	-5	-33	30
	Entorhinal R	ENT R	RT	23	-6	-35	32
	Frontal Pole L	FP L	LPF	-7	68	-11	22



RSN	Node	Abbr.	Cortex	MNI Centroid			Vert.
				x	y	z	
	Frontal Pole R	FP R	RPF	7	68	-15	30
	Inferior Parietal L	IPL L	LP	-42	-71	32	351
	Inferior Parietal R	IPL R	RP	46	-63	32	421
	Paracentral L	paraC L	LC	-7	-30	57	110
	Paracentral R	paraC R	RC	7	-27	57	128
	Pericalcarine L	periCAL L	LO	-11	-82	6	109
	Pericalcarine R	periCAL R	RO	12	-80	7	110
	Postcentral L	postC L	LC	-46	-22	45	333
	Postcentral R	postC R	RC	44	-20	46	307
	Precentral L	preC L	LC	-41	-9	46	339
	Precentral R	preC R	RC	40	-7	46	353
	Superior Frontal L	sFG L	LF	-12	30	41	671
	Superior Frontal R	sFG R	RF	12	32	41	603
	Superior Parietal L	SPL L	LP	-23	-65	50	484
	Superior Parietal R	SPL R	RP	24	-65	51	464
	Temporal Pole L	TP L	LT	-28	14	-38	38
	Temporal Pole R	TP R	RT	27	16	-36	38
	Transverse Temporal L	TT L	LT	-46	-23	10	34
	Transverse Temporal R	TT R	RT	46	-17	9	23

**Table S15: Regional classification of Desikan-Killiany (DK) Atlas Nodes**

<b>Region</b>	<b>DK Atlas Node</b>	<b>Region</b>	<b>DK Atlas Node</b>
Central	Paracentral L	Temporal (cont.)	Posterior Cingulate L
	Paracentral R		Posterior Cingulate R
	Postcentral L		Rostral Anterior Cingulate L
	Postcentral R		Rostral Anterior Cingulate R
	Precentral L		Superior Temporal L
	Precentral R		Superior Temporal R
Frontal	Caudal Middle Frontal L		Temporal Pole L
	Caudal Middle Frontal R		Temporal Pole R
	Pars Opercularis L		Transverse Temporal L
	Pars Opercularis R		Transverse Temporal R
	Pars Triangularis L	Occipital	Cuneus L
	Pars Triangularis R		Cuneus R
	Rostral Middle Frontal L		Lateral Occipital L
	Rostral Middle Frontal R		Lateral Occipital R
	Superior Frontal L		Lingual L
	Superior Frontal R		Lingual R
Temporal	Banks of Sup. Temp. Sulcus L		Pericalcarine L
	Banks of Sup. Temp. Sulcus R		Pericalcarine R
	Caudal Anterior Cingulate L	Parietal	Inferior Parietal L
	Caudal Anterior Cingulate R		Inferior Parietal R
	Entorhinal L		Precuneus L
	Entorhinal R		Precuneus R
	Fusiform L		Superior Parietal L
	Fusiform R		Superior Parietal R
	Inferior Temporal L	Supramarginal L	
	Inferior Temporal R	Supramarginal R	
Insula L	Left	Frontal Pole L	

<b>Region</b>	<b>DK Atlas Node</b>	<b>Region</b>	<b>DK Atlas Node</b>
	Insula R	Prefrontal	Lateral Orbitofrontal L
	Isthmus Cingulate L	Cortex	Medial Orbitofrontal L
	Isthmus Cingulate R		Pars Orbitalis L
	Middle Temporal L	Right	Frontal Pole R
	Middle Temporal R	Prefrontal	Lateral Orbitofrontal R
	Parahippocampal L	Cortex	Medial Orbitofrontal R
	Parahippocampal R		Pars Orbitalis R