

Evaluation of the depth and width of normal fetal Sylvian fissure by trans-cerebellar section

Xu Pingping, Zhang Dirong, Shi Yu, Kong Fengbei, Yao Chunxiao, She Ying, Wu Guoru

Ultrasound Department, Peking University Shenzhen Hospital, Shenzhen, Guangdong, China

Correspondence

Zhang Dirong, Ultrasound Department, Peking University Shenzhen Hospital, Shenzhen, Guangdong, China

Email: zhangdi1616@126.com

CONFLICT OF INTEREST

The authors declare no potential conflict of interest

Funding information

Construction of medical key disciplines in Shenzhen city, Grant/Award Number:

SZXK051; Shenzhen Virtual Reality Clinical Application Public Service

Platform enhancement project, Grant/Award Number: XMHT20190104001;

Three Projects Funded Project in Shenzhen city, Grant/Award Number:

SZSM201512026

DATA AVAILABILITY STATEMENT

Data availability. The full data that supports the findings of this study are available from the corresponding author upon reasonable request.

ACKNOWLEDGEMENTS

The authors thank all the women who participated in the study and acknowledge their significant contribution. Thank you to Zhang Dirong and Shi Yu for helping to design the research methods, Kong Fengbei and Yao Chunxiao for support with statistical analysis, She Ying and Wu Guoru for proposing some strategies for writing.

Abstract

Objective On the basis of retrospectively analysis the trans-cerebellar section showing the Sylvian fissure of normal fetus is better than trans-thalamic section in middle and late trimester, we prospectively established the normal reference range of developmental parameters related to the Sylvian fissure of normal fetus in the trans-cerebellar section in order to provide valuable information for the diagnosis of fetal cerebral cortical dysplasia.

Methods A prospective cross-sectional study was conducted on 845 normal fetuses at 21 to 32 weeks of gestation from January 2019 to September 2020. The depth and width of the Sylvian fissure was measured respectively, and regression analysis was performed according to different gestational age groups.

Results The depth of Sylvian fissure was positively correlated with gestational weeks, and the width of Sylvian fissure was negatively correlated with gestational weeks, with correlation coefficients 0.751 and 0.825 respectively (all $P < 0.001$). Taking gestational weeks as the independent variable, and the depth and width of Sylvian fissure of fetus as the dependent variables, linear regression analysis showed that there was a linear relationship between the independent variables and the dependent variables. The obtained equation was simplified to a formula: Fetal Sylvian fissure depth (mm)= $7+0.6 \times$ (gestational weeks-21), Sylvian fissure width (mm)= $8-0.6 \times$ (gestational weeks-21).

Conclusion The reference range of the depth and width of Sylvian fissure of normal fetus at 21 to 32 weeks of pregnancy through the trans-cerebellar section was established, which could provide valuable information for the evaluation of the normal development of the lateral fissure of fetus and the prenatal diagnosis of fetal cortical hypoplasia.

Key words

Fetus; Sylvian fissure; depth; width; trans-cerebellar section

INTRODUCTION

Cerebral cortical developmental malformation is difficult to diagnose by prenatal ultrasound¹. However, it seriously affects the quality life of children and could lead to severe intellectual retardation and intractable epilepsy². Deformity of fetal cerebral cortex is usually manifested as abnormal sulcus development, which can be specifically manifested as delayed sulcus development, non-development of sulcus and overdevelopment of sulcus³. The delay of sulci development means that sulci development is more than 3 weeks later than that of normal healthy fetus of the same age⁴. The Sylvian fissure, located on the lateral side of the cerebral hemisphere, is one of the main cerebral sulcus. The Sylvian fissure is the earliest one appeared in the development of all the sulci⁵, and its development is representative. Therefore, the development law of the Sylvian fissure can be further indicated by studying the development law of the cerebral cortex. Previous studies have reported the parameters related to the Sylvian fissure in normal fetuses, but most of these studies selected the trans-thalamic section to evaluate the Sylvian fissure, and the measurement sites and methods of the relevant parameters were not uniform⁶⁻¹⁰. In our previous retrospective study, we have found that the Sylvian fissure was shown clearer on trans-cerebellar section than trans-thalamic section. Therefore, the aim of this study was to establish the normal reference range of the depth and width of Sylvian fissure of normal fetuses in middle and late trimester by the trans-cerebellar section, so as to provide valuable information for the evaluation of the normal development of fetal Sylvian fissure and the suspicious diagnosis of fetal cerebral cortical dysplasia by prenatal ultrasound.

METHODS

This was a prospective cross-sectional study. Normal fetuses undergoing routine prenatal ultrasonography in our hospital from January 2019 to September 2020 were selected as subjects. To exclude abnormal fetuses and ensure the relative accuracy of gestational age, the inclusion criteria were as follows: the date of the last menstruation was clear or the gestational week was corrected by crown-rump length; 21 to 32 weeks of gestation; low risk pregnancy including pregnant women without diabetes, hypertension and other pregnancy risk factors. Exclusion criteria were as follows: fetuses with known malformations or chromosomal abnormalities; the large difference between the biological gestational age and the actual gestational age of the fetuses; multiple pregnancies; nervous system abnormality occurs within 6 months after delivery.

This study was approved by the Peking University Shenzhen Hospital and Health Service Human Research Ethics Committee. All pregnant women gave informed consent to this study. The pregnant women ranged in age from 20 to 46 years old, with an average age of 27 years old. The gestational age ranged from 21 to 32 weeks, with an average gestational age of 27 weeks.

The ultrasound machine used in this study was a Voluson E8 or E10 (GE

Healthcare Ultrasound) with a 4-8MHz transabdominal 2D transducer. In each examination, the biparietal diameter, head circumference, abdominal circumference, femur and other parameters of the fetus were measured to comprehensively evaluate the biological gestational age of the fetus, and then the screening of the structural malformation of each fetal system was conducted.

When detailed screening of fetal central nervous system structures, the depth and width of Sylvian fissure of the fetus were measured by trans-cerebellar section. Standard trans-cerebellar section¹¹: the probe clearly showed the midline of the brain, cavity of septum pellucidum, thalamus, bilateral cerebellar hemispheres and the vermis of the cerebellum, posterior fossa and Sylvian fissure. The measurement method was shown in Figure 1. Sylvian fissure depth: made a vertical line perpendicular to the top edge through the midpoint of the top edge of the Sylvian fissure, and measured the distance from the top edge to the medial surface of the skull on the vertical line. Sylvian fissure width: made a line parallel to the top edge through the middle point of the depth line of the Sylvian fissure and measured the distance between the front and back medial edges of Sylvian fissure on the parallel line. Each patient was measured by one experienced sonographer, and each was measured 3 times. When the fetus had poor image acquisition due to positional limitations, the pregnant woman was instructed to perform the scan after moderate activity.

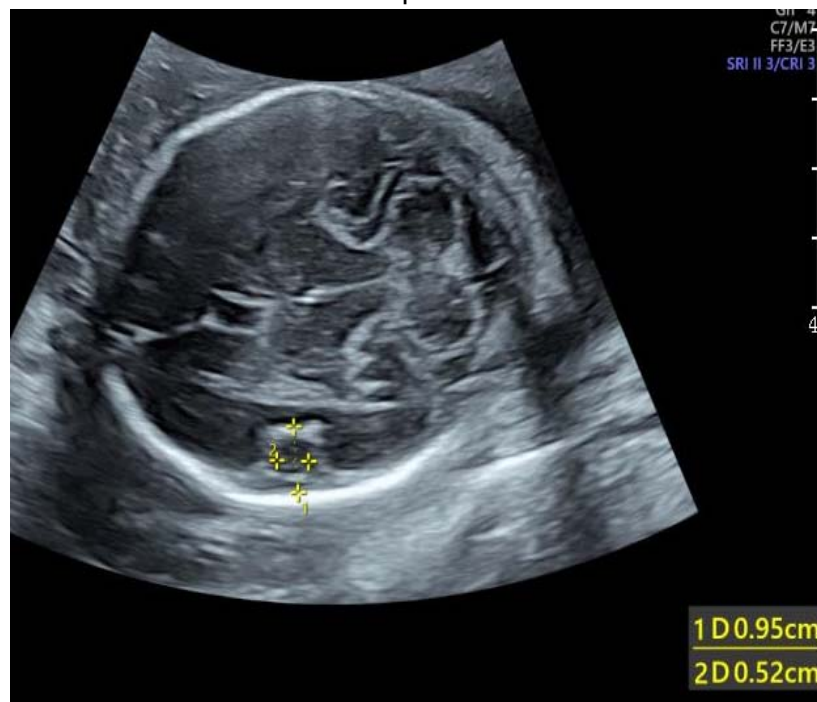


Fig. 1 Measurement of depth and width of Sylvian fissure at 24 weeks of gestation. 1: Sylvian fissure depth; 2: Sylvian fissure width

SPSS 26.0 statistical software was used to analyze and process the data. The main steps were as follows:(i) All measured data were counted and divided into 12 groups according to gestational age. The gestational age

sample size of each group was counted, the mean value and standard deviation of each parameter in each group ($\bar{x} \pm s$) were calculated; (ii) the normality of each parameter value was tested by the Anderson-Darling test; (iii) for data that conformed to a normal distribution, the 95% reference range was calculated using the two-sided boundary value normal distribution method; for data with a skewed distribution, the normal reference range was calculated using the two-sided boundary value percentile method. The scatter plot of the relationship between the depth and width of Sylvian fissure of fetus and the week of gestation was drawn, and a linear regression equation was established by linear regression analysis, with $p < 0.05$ being statistically significant.

RESULTS

A total of 845 subjects were included in the study. The sample data of the depth and width of Sylvian fissure of fetus at different gestational weeks were consistent with or approximately normal distribution. The mean value, standard deviation and 95% reference range of each parameter were calculated at different gestational weeks, and the bilateral boundary value was taken. The data were shown in Table 1 and Table 2.

Scatterplots of the relationship between the depth and width of the Sylvian fissure of the fetus and gestational weeks were drawn (Fig.2, Fig.3). Correlation analysis showed that the depth of Sylvian fissure was positively correlated with gestational weeks, with a correlation coefficient 0.751 ($P < 0.001$); the width of Sylvian fissure was negatively correlated with gestational weeks with a correlation coefficient 0.825 ($P < 0.001$).

Taking gestational weeks as the independent variable, the depth and width of Sylvian fissure of fetus were used as the dependent variables for linear regression analysis. The results showed that there was a linear regression relationship between gestational weeks and the depth and width of the Sylvian fissure of fetus. The obtained linear regression equations were as follows: Sylvian fissure depth(mm)=7.174+0.568×(gestational weeks-21), Sylvian fissure width(mm)=8.089-0.602×(gestational weeks-21). The above equations were simplified as follows: Sylvian fissure depth(mm)=7+0.6×(gestational weeks-21), Sylvian fissure width(mm)=8-0.6×(gestational weeks-21).

Table 1 The mean value, standard deviation($\bar{x} \pm s$) and 95% reference range of the depth of Sylvian fissure of fetus at different gestational weeks

Gestational weeks	Numbers	Sylvian fissure depth(mm)	
		($\bar{x} \pm s$)	95% reference range
21	65	6.76±1.09	5.01~8.80
22	70	7.60±1.25	5.23~9.47
23	91	8.49±1.56	5.80~11.34
24	75	8.81±1.59	5.50~11.67
25	68	9.19±1.75	5.84~12.48
26	78	10.58±1.27	8.21~12.85
27	75	10.95±1.63	8.40~14.00
28	70	11.21±1.55	8.80~14.43
29	71	12.07±2.02	7.14~14.88
30	67	12.43±2.12	7.95~16.05
31	60	12.50±2.11	8.12~16.23
32	55	13.10±1.94	9.39~16.54

Table 2 The mean value, standard deviation($\bar{x} \pm s$) and 95% reference range of the width of Sylvian fissure of fetus at different gestational weeks

Gestational weeks	Numbers	Sylvian fissure width(mm)	
		($\bar{x} \pm s$)	95% reference range
21	65	8.31±1.27	6.38~10.33
22	70	7.11±1.26	4.93~8.70
23	91	6.88±1.45	4.44~9.16
24	75	6.38±1.48	4.00~8.64
25	68	6.23±1.51	3.44~8.36
26	78	5.48±1.32	3.07~7.67
27	75	5.07±1.56	2.47~7.22
28	70	3.66±1.25	1.80~5.54
29	71	3.02±1.19	1.70~5.01
30	67	2.63±1.23	1.10~5.34
31	60	1.88±1.01	0.22~3.83
32	55	1.50±1.04	0.15~3.65

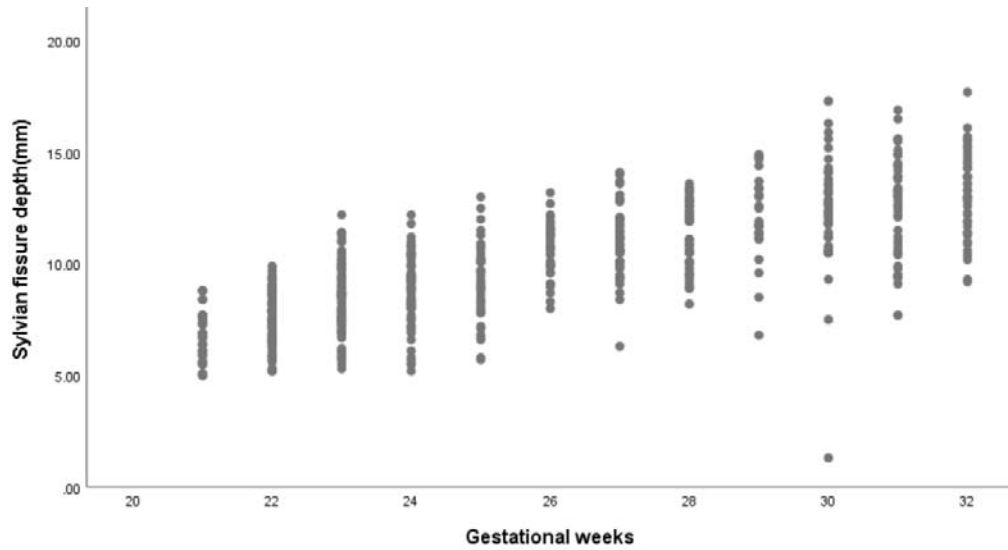


Fig. 2 Scatterplot of the relationship between the Sylvian fissure depth and gestational weeks

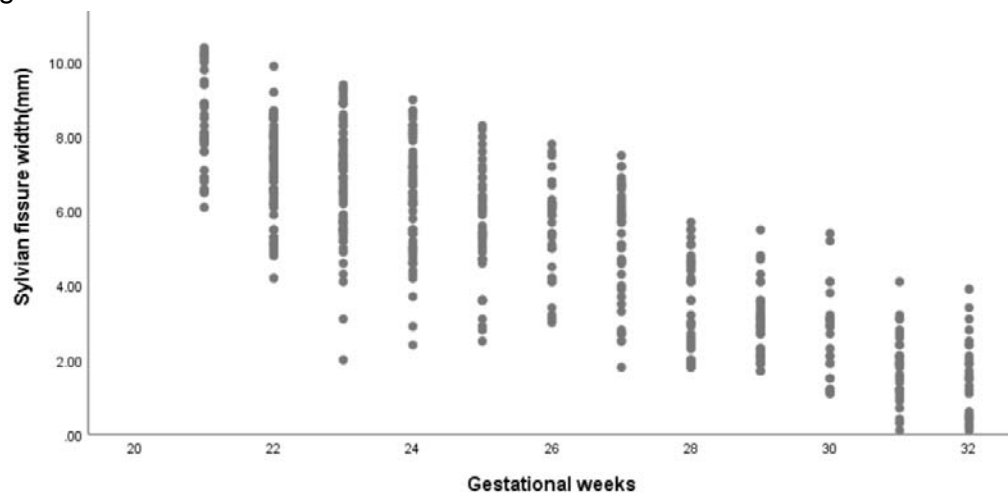


Fig. 3 Scatterplot of the relationship between the Sylvian fissure width and gestational weeks

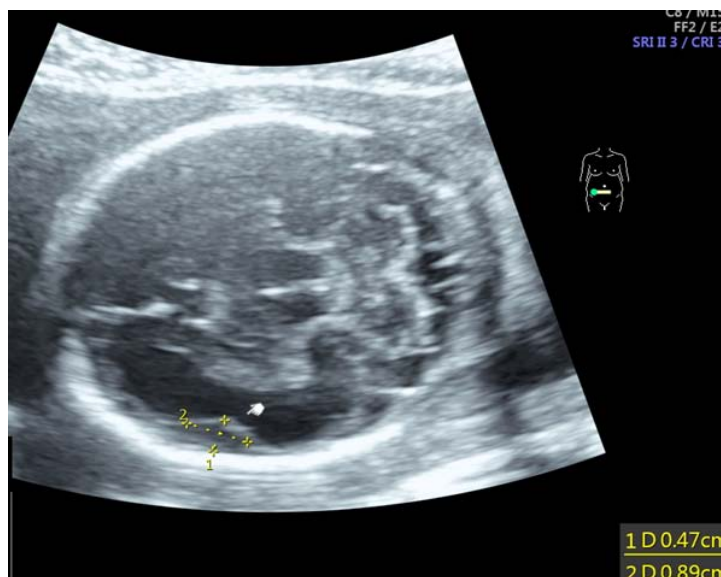


Fig. 4 The depth of Sylvian fissure was below the 5th percentile and its width was above the 95th percentile at 24 weeks of gestation.

DISCUSSION

Human brain development is extremely complex, but it follows strict developmental rules. Some scholars consider that cerebral sulci can be used as a sign of fetal cranial development¹². The developmental process of cerebral sulci can be used as a standard to evaluate the gestational age. By observing the development of cerebral sulci to further evaluate the development of the whole fetal brain is of great significance to the evaluation of fetal brain development and the diagnosis of diseases. The brain develops rapidly and has obvious morphological changes. In appearance, it can be seen that the brain develops from a tubular structure to a surface covered with furrows, and various branches of the furrows will appear in the process of forming sulci¹³⁻¹⁵.

The Sylvian fissure, located on the lateral side of the cerebral hemisphere, is one of the major cerebral sulcus and the earliest one sulci to appear. It separates the upper frontal and parietal lobes from the lower temporal lobes. The development of the Sylvian fissure also indirectly reflects the development speed of the frontal, parietal and temporal lobes¹⁶. Prenatal ultrasound can clearly show the Sylvian fissure, so it can be used to evaluate the development of the Sylvian fissure. At present, there have been reports on the evaluation of fetal Sylvian fissure, but the research conclusions are not uniform because of the differences in the study section and measurement methods. The existing studies to evaluate the development parameters of fetal fissure lateral mainly select the cross-section of the thalamus. Current studies have assessed the developmental parameters of the Sylvian fissure of fetus mainly by trans-thalamic section. However, in our previous retrospective study, we have found that the trans-cerebellar transverse section showed the Sylvian fissure

clearer than the trans-thalamic section in each gestational week, which indicated that most of the developmental parameters related to the Sylvian fissure can be measured in the trans-cerebellar section clearly, and the measurement results will be more repeatable. The overall clarity of the Sylvian fissure shown on the trans-thalamic section is low, which indicated that in most cases, adjustments are needed on this standard section to measure the parameters related to the Sylvian fissure, which may affect the repeatability of the measurement results.

Therefore, in this study, the developmental parameters related to the Sylvian fissure of fetus were quantitatively measured by trans-cerebellar section and the measurement method of the depth and width of the Sylvian fissure was clearly defined.

In this study, normal fetuses from 21 to 32 weeks of gestation were selected as the research object, and trans-cerebellar section was selected and the data were successfully measured with a rate of 95.6%. The results of this study showed that the depth of Sylvian fissure was positively correlated with gestational weeks, and the width of Sylvian fissure was negatively correlated with gestational weeks, with correlation coefficients 0.751 and 0.825 respectively (all $P < 0.001$). Taking gestational weeks as the independent variable, and the depth and width of Sylvian fissure of fetus as the dependent variables, linear regression analysis showed that there was a linear relationship between the independent variables and the dependent variables. The obtained linear regression equations were as follows: Sylvian fissure depth(mm)= $7.174+0.568 \times (\text{gestational weeks}-21)$, Sylvian fissure width(mm)= $8.089-0.602 \times (\text{gestational weeks}-21)$. The above equations were simplified as follows: Sylvian fissure depth(mm)= $7+0.6 \times (\text{gestational weeks}-21)$, Sylvian fissure width(mm)= $8-0.6 \times (\text{gestational weeks}-21)$. During prenatal ultrasound examination, if the depth or width of the Sylvian fissure of the fetus is significantly lower than that of gestational week (depth < the 5th percentile, width > the 95th percentile), it is necessary to be alert to the possibility of fetal sulcus development retardation (as shown in Fig.4). MRI examination of the brain of the fetus confirmed cortical dysplasia.

In this study, we innovatively selected trans-cerebellar section to evaluate the Sylvian fissure of normal fetuses and preliminarily elucidated the depth and width of the Sylvian fissure of normal fetuses at 21 to 32 weeks of gestation, which can provide valuable information for the evaluation of the normal development of fetal Sylvian fissure and the prenatal diagnosis of fetal cortical dysplasia.

REFERENCES

- 1.Malinger G, Kidron D, Schreiber L, et al. Prenatal diagnosis of malformations of cortical development by dedicated neurosonography. *Ultrasound Obstet Gynecol.*2007;29(2):178-191.
- 2.Leventer RJ, Guerrini R, Dobyns WB. Malformations of cortical development and epilepsy. *Dialogues Clin Neurosci.*2008;10(1):47-62.

3. Lerman-Sagie T, Leibovitz Z. Malformations of Cortical Development: From Postnatal to Fetal Imaging. *Can J Neurol Sci.* 2016;43(5):611-618.
4. Chen X, Lö G, Lin H. Ultrasonographic analysis of abnormal development of cerebral sulci and gyri. *Chin Med J.* 2010;19(10):915-916.
5. Toi A, Lister WS, Fong KW. How early are fetal cerebral sulci visible at prenatal ultrasound and what is the normal pattern of early fetal sulcal development. *Ultrasound Obstet Gynecol.* 2004;24(7):706-715.
6. Cohen-Sacher B, Lerman-Sagie T, Lev D, et al. Sonographic developmental milestones of the fetal cerebral cortex: a longitudinal study. *Ultrasound Obstet Gynecol.* 2006;27(5):494-502.
7. Mittal P, Gonçalves LF, Kusanovic JP, et al. Objective evaluation of sylvian fissure development by multiplanar 3-dimensional ultrasonography. *Ultrasound Med.* 2007;26(3):347-353.
8. Alonso I, Borenstein M, Grant G, et al. Depth of brain fissures in normal fetuses by prenatal ultrasound between 19 and 30 weeks of gestation. *Ultrasound Obstet Gynecol.* 2010;36(6): 693-699.
9. Chen X, Li S-L, Luo G-Y, et al. Ultrasonographic Characteristics of Cortical Sulcus Development in the Human Fetus between 18 and 41 Weeks of Gestation. *Chin Med J (Engl).* 2017;130(8):920-928.
10. Alves CM, Edward AJ, Luciano M, et al. Reference Ranges for Fetal Brain Fissure Development on 3-Dimensional Sonography in the Multiplanar Mode. *Ultrasound Med.* 2013;32(2):269-277.
11. Malinger G, Paladini D, Haratz KK, et al. ISUOG Practice Guidelines (updated): sonographic examination of the fetal central nervous system. Part 1: performance of screening examination and indications for targeted neurosonography[. *Ultrasound Obstet Gynecol.* 2020;56(3):476-484.
12. Nishikuni K, Ribas GC. Study of fetal and postnatal morphological development of the brain sulci. *Neurosurg Pediatr.* 2013;11(1):1-11.
13. Zang J, Xu X, Niu Y, Deng J. Cortical development and cell cycle. *Chinese Journal of Anatomy.* 2011;34(5):707-710.
14. Huang H, Xue R, Zhang J, et al. Anatomical characterization of human fetal brain development with diffusion tensor magnetic resonance imaging. *Neurosci.* 2009;29(13):4263-4273.
15. Ruoss K, Lövblad K, Schroth G, et al. Brain development (sulci and gyri) as assessed by early postnatal MR imaging in preterm and term newborn infants. *Neuropediatrics.* 2001;32(2):69-74.
16. Quarello E, Stirnemann J, Ville Y, et al. Assessment of fetal Sylvian fissure operculization between 22 and 32 weeks: a subjective approach. *Ultrasound Obstet Gynecol.* 2008;32(1):44-49.