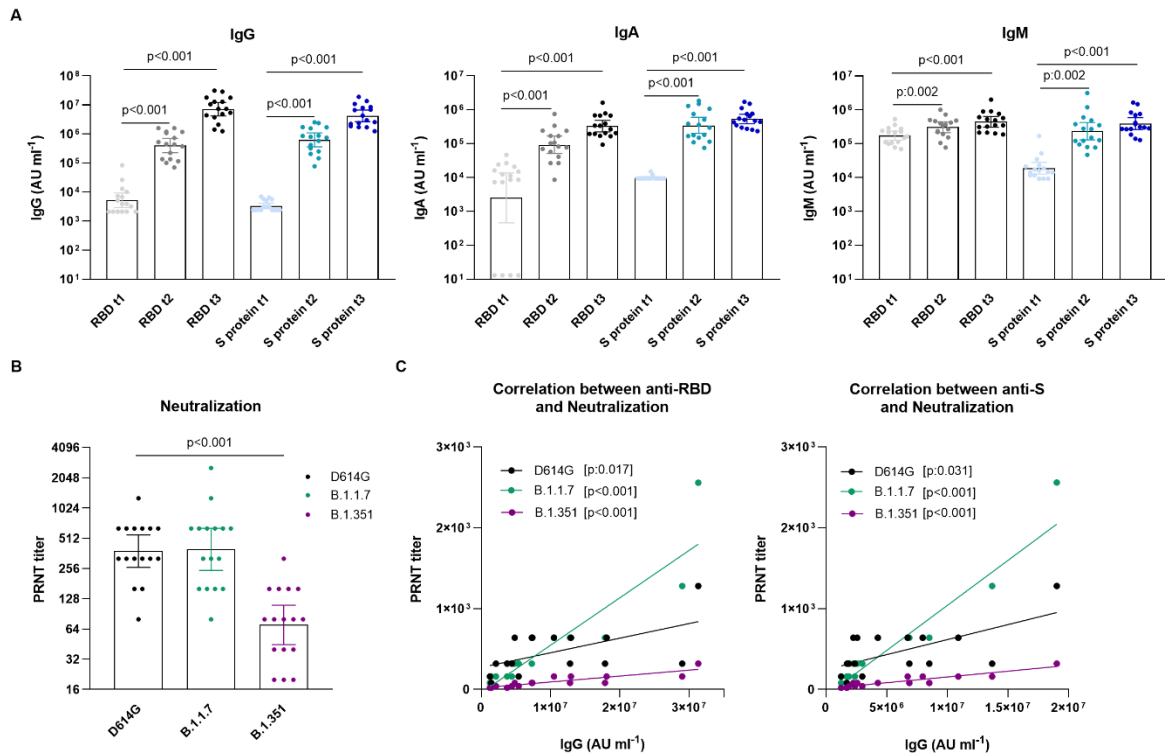


## Supplemental Information titles and legends



**Figure S1. Humoral response before and after BNT162b2 vaccination.** (A) Specific antibody responses to SARS-CoV-2 proteins at baseline (t1), after first vaccination (t2), and after second vaccination (t3) from sera of the subjects. Wilcoxon's matched-pairs signed-rank test, the data are presented as antibody concentration  $\pm$  geometric mean with 95% CI. (B) Neutralization assay for different variants compared to WT performed with sera at t3. Kruskal-Wallis test followed by Dunnett's multiple comparison. (C) Correlation between neutralization and specific IgG responses to SARS-CoV-2 proteins measured at t3. Spearman correlation coefficients ( $r$ ) for neutralization vs RBD-specific IgG are 0.593, 0.963 and 0.909 for D614G, B.1.1.7 and B.1.351 respectively. Spearman correlation coefficients ( $r$ ) for neutralization vs S protein-specific IgG are 0.543, 0.952 and 0.894 for D614G, B.1.1.7 and B.1.351 respectively.  $n=16$ ,  $p$ -values are depicted in the figures.

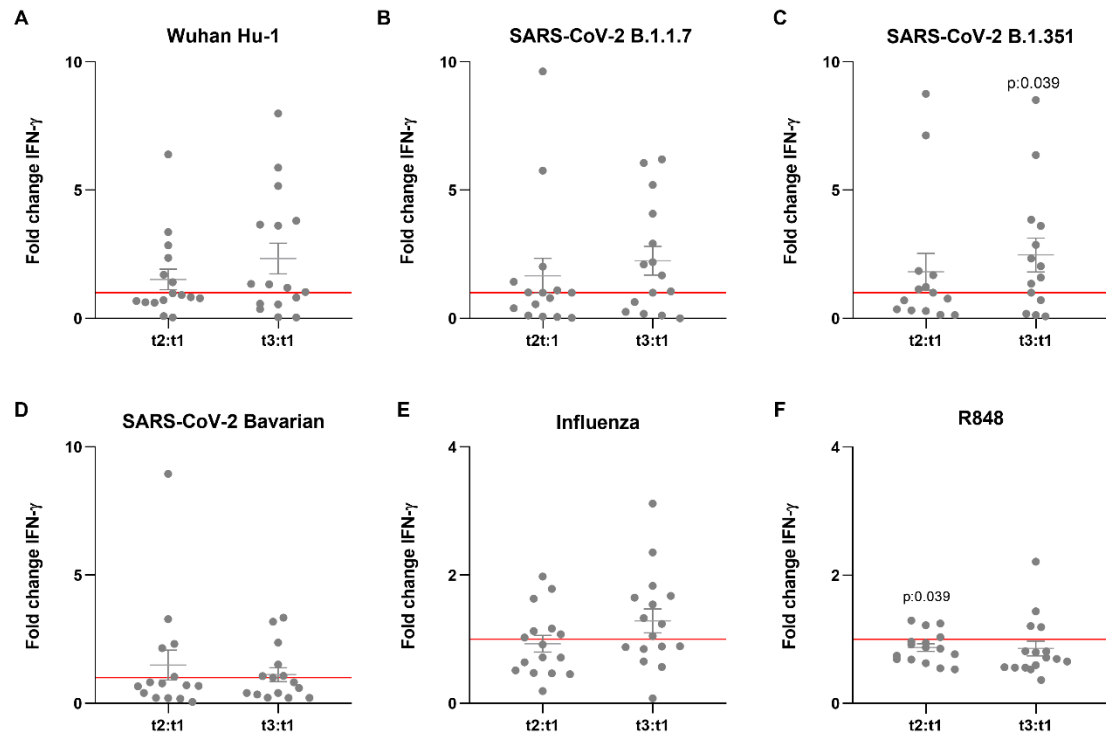


Figure S2. Specific IFN- $\gamma$  responses after stimulation with various SARS-CoV-2 variants and viral stimuli in PBMCs isolated from vaccinated subjects. (A-F) Fold change values are calculated individually for each subject by division of t2:t1 and t3:t1. IFN- $\gamma$  production is quantified from supernatants of PBMCs after 7 days stimulation by ELISA. The data is presented as fold changes  $\pm$  SEM (n=14-16) and analysed by Wilcoxon's matched-pairs signed-rank test comparing each fold change to t1=1 (red line).

Table S1. Patient characteristics

<b>Demographic</b>	
Age, years	39.31±11.3
Female, n (%)	9 (56.3)
Weight, kg	69.63±7.54
Height, cm	176.4±9.30
Body mass index, kg/m <sup>2</sup>	22.59±2.47
Smoker, current, n	0
Smoker, ever, n (%)	2 (12.5)
<b>Vaccination history in the past 12 months</b>	
Influenza, n (%)	16 (100)
BCG, n (%)	9 (56.3)
Hepatitis B booster, n (%)	1 (6.25)
<b>Comorbidities</b>	
None, n (%)	15 (93.75)
Asthma, n (%)	1 (6.25)
<b>Medication use</b>	
None, n (%)	14 (87.5)
Statins, n (%)	1 (6.25)
Inhaled corticosteroids, n (%)	1 (6.25)

\*Values are expressed as mean ± SD, unless stated otherwise

Table S2. Absolute concentrations of cytokine production before and after vaccination.

Cytokine	Time Stimuli	t1 (baseline)	t2 (3 weeks after 1 <sup>st</sup> dose)	t3 (2 weeks after 2 <sup>nd</sup> dose)
TNF- $\alpha$	RPMI	821.8 $\pm$ 218.8	595.2 $\pm$ 117.8	590.9 $\pm$ 204.6
	Poly I:C	1364.8 $\pm$ 317	1358.3 $\pm$ 304	944.2 $\pm$ 411
	R848	22065.3 $\pm$ 1995	20871.7 $\pm$ 2294.6	16555 $\pm$ 1516.4
	Influenza	2165 $\pm$ 551.2	2164.8 $\pm$ 565	2013 $\pm$ 431.3
	Wuhan Hu-1	1197.6 $\pm$ 373	1638 $\pm$ 430.6	1445.2 $\pm$ 460.8
	LPS	8801 $\pm$ 1057	9196.2 $\pm$ 988.5	8538 $\pm$ 1228
	<i>C. albicans</i>	5194 $\pm$ 830.4	5710 $\pm$ 617	4558 $\pm$ 593.8
IL-1 $\beta$	RPMI	200.1 $\pm$ 38.4	144 $\pm$ 26.6	131.2 $\pm$ 24
	Poly I:C	471.8 $\pm$ 90.5	478.2 $\pm$ 84.6	234.1 $\pm$ 47.8
	R848	10122.4 $\pm$ 1101	9768 $\pm$ 1019	8462.7 $\pm$ 870.7
	Influenza	469.7 $\pm$ 104	456.6 $\pm$ 132.5	439.6 $\pm$ 79
	Wuhan Hu-1	352.8 $\pm$ 109.2	310.6 $\pm$ 83.7	306.2 $\pm$ 80.2
	LPS	5932.8 $\pm$ 623.2	5822 $\pm$ 575.9	5668.4 $\pm$ 644.7
	<i>C. albicans</i>	2376.7 $\pm$ 282.7	2789.3 $\pm$ 211.2	2591.2 $\pm$ 274
IL-1Ra	RPMI	5652 $\pm$ 380.7	5128 $\pm$ 250.5	5093.3 $\pm$ 328.1979
	Poly I:C	20382.5 $\pm$ 1088.2	21214 $\pm$ 1555.4	18082 $\pm$ 1614.8
	R848	18409 $\pm$ 1045.8	20474.2 $\pm$ 1340.5	15346.1 $\pm$ 1153.2
	Influenza	13626.6 $\pm$ 989.6	14740.3 $\pm$ 1667	13758.6 $\pm$ 1472
	Wuhan Hu-1	8709 $\pm$ 728	7864,6 $\pm$ 663	7405.6 $\pm$ 1013.2
	LPS	18913.6 $\pm$ 2072.7	21595.7 $\pm$ 3141	14127.4 $\pm$ 1678.4
	<i>C. albicans</i>	18054.6 $\pm$ 1537.8	17147.7 $\pm$ 1899.3	14163.7 $\pm$ 1341.5
	RPMI	1963.8 $\pm$ 419.3	1376.4 $\pm$ 317.3	2071.4 $\pm$ 595.1

IFN- $\gamma$	R848	30589.4 $\pm$ 3310.7	26326.5 $\pm$ 3225.2	23663,2 $\pm$ 2699
	Influenza	5297.1 $\pm$ 1315.7	3979.2 $\pm$ 670	5031.1 $\pm$ 915.4
	Wuhan Hu-1	1423.2 $\pm$ 214.7	1686.2 $\pm$ 301.9	3014 $\pm$ 825.2
	B.1.1.7	3598.4 $\pm$ 1824	1093.5 $\pm$ 286.5	2356 $\pm$ 898.8
	B.1.351	2173 $\pm$ 458.5	2722 $\pm$ 1166.6	5001.7 $\pm$ 1955.5
	Bavarian	3189.2 $\pm$ 682.8	4161 $\pm$ 1834	3110.8 $\pm$ 815.7

\*Data are presented as Mean  $\pm$  SEM (n=14-16)