

1 TITLE: IS WHO INTERNATIONAL STANDARD FOR ANTI-SARS-COV-2
2 IMMUNOGLOBULIN CLINICALLY USEFUL?

3

4 AUTHORS: Krzysztof Lukaszuk^{1,2}, Jolanta Kiewisz³, Karolina Rozanska², Amira Podolak²,
5 Grzegorz Jakiel⁴, Izabela Woclawek-Potocka⁵, Lukasz Rabalski⁶, Aron Lukaszuk⁴

6 AFFILIATIONS:

7 1 Department of Obstetrics and Gynecology Nursing, Medical University of Gdansk, Gdansk,
8 Poland

9 2 Invicta Research and Development Center, Sopot, Poland

10 3 Department of Human Histology and Embryology, Medical Faculty, University of Warmia
11 and Mazury in Olsztyn, Olsztyn, Poland

12 4 1st Department of Obstetrics and Gynecology, The Center of Postgraduate Medical
13 Education, Warsaw, Poland

14 5 Department of Gamete and Embryo Biology, Institute of Animal Reproduction and Food
15 Research, Polish Academy of Sciences, Olsztyn, Poland

16 6 Laboratory of Recombinant Vaccines Intercollegiate Faculty of Biotechnology University of
17 Gdansk and Medical University of Gdansk, Gdansk, Poland

18

19

20 CORRESPONDING AUTHOR: Aron Lukaszuk, lukaszuk.aron@gmail.com

21

22

23

24

25

26

27

28

29

30

31

32

33

NOTE: This preprint reports new research that has not been certified by peer review and should not be used to guide clinical practice.

34 **ABSTRACT**

35 Background: The introduction of vaccination against SARS-CoV-2 infection needs precise
36 instruments for quality control of vaccination procedure, detection of poor immunological
37 response and estimation of the achieved protection against the disease but also against infection
38 and being infective.

39 Objective: To compare new automated SARS-CoV 2 Ig assay performance characteristics from
40 the automated Elecsys SARS-CoV-2 S (Roche) with the new LIAISON® SARS-CoV-2
41 TrimericS IgG (DiaSorin) assay and their compatibility with WHO International Standard for
42 anti-SARS-CoV-2 immunoglobulin. In the context of the mass vaccination programs, we
43 undertook the investigation of clinical utility of the two new automated assays by analyzing
44 results in samples collected at specified time points relative to the vaccination time.

45 Design: Prospective assay evaluation.

46 Patients: Medical staff undergoing vaccination with BioNTech/Pfizer Comirnaty vaccine
47 between January and March 2021 (n = 79) and referred for serum antiSARS-CoV 2 Ig testing
48 prior to vaccination, 21 days after the first dose, and 8, 14 and 30 days after the second dose.

49 Main Outcome Measure(s): Serum antibody levels measured with Roche and DiaSorin assays.

50 Results: Intra-assay imprecision was low with DiaSorin at 3.46%; and Roche at 2.5%. The
51 Passing-Bablok regression equation for all tested samples was y (DiaSorin) = 184.61 + (1.03 x
52 Roche) and the correlation between the assays ($r=0.587$; $p < 0.0001$).

53 Conclusions: The novel automated assays exhibit strong concordance in calibration, with assay-
54 specific interpretation required for routine clinical use. These results highlight the need for
55 further work on the international standard of measurement of SARS-CoV 2 Ig especially in era
56 of vaccination. The serological assays can be useful to detect IgG/IgM antibodies, to assess the
57 degree of immunization, to trace the contacts, and to support the decision to readmit people to
58 work or vaccinate them again. However, the values generated by both assays can be markedly
59 different, and assay-specific and personalized interpretation is required.

60 Key words: COVID-19, SARS-CoV-2, vaccination, Pfizer/BioNTech, Roche, DiaSorin

61 **Introduction**

62 The vaccination against severe acute respiratory syndrome coronavirus 2 (SARS-CoV-2)
63 infection is rapidly changing the epidemic situation in countries undertaking mass vaccination
64 programs. Therefore, it is now important to define and refine vaccination assessment methods
65 to determine the vaccination course and use them to optimize epidemic management protocols.
66 A variety of kits are used for testing the level of antibodies in blood with ELISA methods.
67 Various viral proteins and different classes of antibodies are tested. Concerning the quality of
68 the technology itself and the dependence of its results on a large number of variables, including
69 the influence of the human factor, it is an appropriate technology for initial measurements for
70 the purpose of scientific research. For clinical applications, IVD kits are required - simple to
71 perform (using automatic platforms) and resistant to the influence of human factors. The
72 LIAISON® SARS-CoV-2 TrimericS IgG (DiaSorin, USA) (DiaSorin) assay and Elecsys Anti-
73 SARS-CoV-2 S (IgG and IgM) (Roche Diagnostics, Germany) (Roche) quantitative kits are
74 currently available. The DiaSorin assay detects IgG against the anti-Trimeric Spike
75 glycoprotein of SARS-CoV-2. Roche Ig detection assay is focused on the RBD domain of S1
76 protein. Both of the assays are potentially useful and easy to use. Recently, both of them were
77 compared by manufacturers to the WHO International Standard for anti-SARS-CoV-2
78 immunoglobulin [1,2]. The intended use of the International Standard is for the calibration and
79 harmonization of serological assays detecting antibodies neutralizing SARS-CoV-2 [3].

80

81 This aim of the study was to assess unification of the anti-SARS-CoV-2 test results by
82 converting them into units of the WHO standard (BAU/ml) and, to evaluate their clinical value
83 for confirmation of prior infection history and detection of suboptimal reaction to vaccination.

84

85 The study has been financed by Invicta Research and Development Center.

86

87 **Materials and Methods**

88 *Ethical policy*

89 The ethical approval was received from the Ethics Committee at the Gdansk Regional Medical
90 Board (No KB - 4/21). All participants gave written informed consent for providing blood
91 samples.

92

93 *Participants*

94 Study included 79 randomly selected participants who underwent SARS-CoV-2 vaccination
95 between Jan. 4, 2021 and Mar. 11, 2021. Participants were divided into two groups based on
96 their status of the SARS-CoV-2 infection prior to vaccination, confirmed by the positive result
97 of antibody test before the first dose of the vaccine. The patients with the history of
98 SARS-CoV-2 (SCV2-positive; n= 15; age: 37.8 (6.13); F/M: 11/4) reported having the infection
99 at least 90 days before vaccination. The SARS-CoV-2 negative patients (SCV2-negative; n=
100 64; age: 41.54 (11.31); F/M: 55/9) have not reported having contact with a SARS-CoV-2
101 antigen before vaccination. None of the participants reported any allergic reactions or immune
102 disorders during the vaccination enrollment and medical examination and all received two 30
103 ug doses of mRNA vaccine (Comirnaty; BioNTech/Pfizer) with the interval of 21 days between
104 doses. Blood were collected from participants before the first dose, after 21 days (i.e., on the
105 day of the second dose) and 8, 14 and 30 days after the second dose. Samples were handled
106 according to the recommendations of the producent of the tests.

107

108 *Assays characteristics*

109 Manufacturer-reported assay characteristics, measuring ranges, analytic sensitivity, and
110 detection limits are provided in Table 1.

111

112

113

114

115 Table 1. The assays characteristics

Characteristics	Elecsys Anti-SARS-CoV-2 S	LIAISON® SARS-CoV-2 TrimericS IgG
Specified by manufacturer:		
Assay type	Automated	
Dilution method	Automated, 10x	Manual, 10x
Testing time	18 min	35 min
Test principle	Double-antigen sandwich principle. Electrochemiluminescence detection (ECLIA)	Indirect immunoassay. Chemiluminescence detection (CLIA)
Calibration	2 points	
Calibrators frequency	Started with new reagent lot / Quality control findings outside the defined limits	
Traceability	Standardized against the internal Roche standard for anti-SARS-CoV-2 S / from date 12.01.2021 Standardized against the WHO IS: NIBSC 20-136	Correlation with Microneutralization Test (MNT) / from date 02.02.2021 standardized against the WHO IS: NIBSC 20-136
Sample material	Serum	
Sample volume	12 uL	10 uL
Limit of detection (LoD)	0.35 U/mL	0.712 AU/mL
Limit of quantification (LoQ)	0.40 U/mL	1.63 AU/mL
Measuring range	0.40-250 U/mL	1.85-800 AU/mL
BAU conversion	$\frac{U/mL}{0.972}$	AU/ml * 2.6
Laboratory specific:		
Controls frequency	Daily	

116
 117 Two assays were used to determine antibody levels: Elecsys Anti-SARS-CoV-2 S (Roche) and
 118 LIAISON® SARS-CoV-2 TrimericS IgG assay (DiaSorin). The Roche assay detects antibodies
 119 (IgG) to the SARS-CoV-2 spike (S) protein receptor binding domain (RBD) in human serum
 120 and plasma. The DiaSorin assay identifies IgG antibodies against the S1 and S2 proteins of the
 121 SARS-CoV-2 virus. Both tests were validated against the WHO International Standard for anti-
 122 SARS-CoV-2 immunoglobulin. The quantity of antibody in a tested samples were quantified

123 in the units specific for each assay (U/ml for Roche and AU/ml for DiaSorin) and were
124 converted to Binding Antibody Units (BAU)/ml according to the manufacturers' information
125 regarding the WHO Standard. The conversion for Roche and DiaSorin tests were: U/ml =
126 $0.972 \cdot \text{BAU}$ and $\text{AU/ml} \cdot 2,6 = \text{BAU/ml}$, respectively. The results were analyzed for all the
127 collected samples and then separately for the different clinical situations and time points.

128 When the upper estimating range was acquired, serum samples were diluted automatically
129 (limited to 10x) using the reagents supplied by the manufacturer (Roche), or manually (no need
130 for dilution more than 10x) with antibody-free serum (DiaSorin) and analyzed again. The level
131 of antibodies in the blood of the SCV2-positive group after the first dose of vaccine exceeded
132 the detection range of the Roche kit, and the blood samples from these patients at the post-
133 vaccinations time-points were excluded from subsequent comparisons. Thirty-three samples
134 (51.56 %) from the SCV2-negative group tested 8 days after the second vaccine dose exceeded
135 the detection limit of the Roche kit, thus, the results were excluded from further analysis. The
136 results of the remaining 31 patients of the SCV2-negative group were within the detection range
137 of the Roche kit and were used for comparison.

138

139 *Statistical analysis*

140 Statistical analyses were performed using R the packages (tidyverse, mcr) [4,5,6]. Passing-
141 Bablok regression equations were used to estimate the relationship between the results obtained
142 with different analyses. Bland-Altman plots were used to compare tests graphically to assess
143 bias and check whether the variability in measures was homoscedastic. Correlations among the
144 anti SARS-CoV-2 immunoglobulin level in-between conducted tests were evaluated by the
145 Pearson's rank correlation test.

146

147 **Results**

148 *Assay precision and accuracy*

149 The precision and accuracy of assays are shown in Table 2. The obtained imprecision rates (I)
 150 for compared sets of analytic and evaluated samples Ig values were satisfactory and did not
 151 exceed 4%.

152 Table 2. The precision and accuracy of the ELISA assays

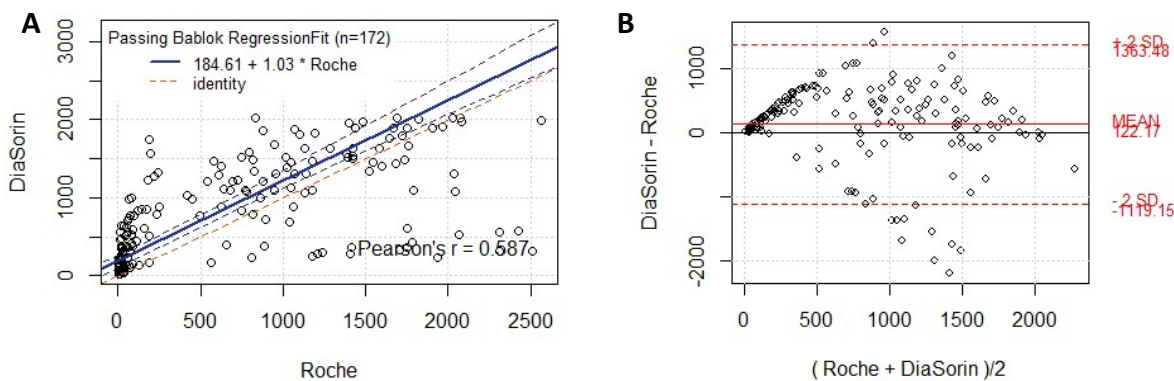
Control sample	Roche (U/ml)		DiaSorin (AU/ml)	
	PreciControl Anti-SARS-CoV-2 S p1	PreciControl Anti-SARS-CoV-2 S p2	SARS-CoV-2 TG Control Set p1	SARS-CoV-2 TG Control Set p2
LOT	526346	526347	311031	212031
Nominal value	n/a	8,41	n/a	37,5
Range	0.000-0.399	5.887-10.933	0.0-6.0	26.38-48.8
Average	<0.400	7.86	<1.85	38.29
SD	n/a	0.193	n/a	1.323
I (%)	n/a	2.5	n/a	3.46
B (%)	n/a	-6.6	n/a	2.1

153 SD – Standard Deviation; I – Imprecision; B - Bias

154

155 *Detection of SARS-CoV-2 antibody within the entire study group*

156 Figure 1 presents the Passing-Bablok regressions and Bland-Altman plots comparing Ig values
 157 of the same samples, collected before the first dose of the vaccine (n=15), after 21 days (n=64)
 158 and 8 (n=31), 14 (n=31) and 30 (n=31) days after the second dose, measured with Roche and
 159 DiaSorin ELISA tests. The Passing-Bablok linear regression shows correlation between the
 160 assays ($r=0.587$; $p < 0.0001$). A disparity was apparent in many results. The Bland-Altman plots
 161 show that as the mean value of Ig levels increases, the differences between the two values
 162 become larger.



163

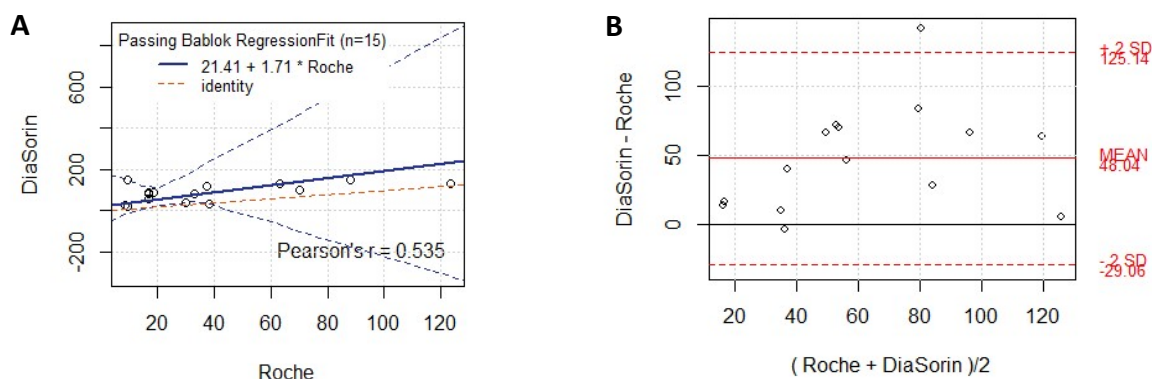
164 Figure 1. Passing-Bablok and Bland-Altman plots for the same samples compared with Roche
 165 and DiaSorin ELISA tests, collected before the first dose of the vaccine (n=15), after 21 days
 166 after first dose (n=64) and 8 (n=31), 14 (n=31) and 30 (n=31) days after the second dose,
 167 measured with Roche and DiaSorin.

168

169 *Detection of SARS-CoV-2 antibody within the SCV2-positive group*

170 The Passing-Bablok regressions and Bland-Altman plots comparing the same samples tested
 171 with Roche and DiaSorin ELISA tests for SCV2-positive (Figures 2A and 2B) are presented.

172 For the SCV2-positive group, only samples collected before vaccination are included (n=15), as
 173 the results in this group following vaccination were outside the detection limit for the Roche
 174 kit. In the SCV2-positive group of patients who suffered from COVID-19 approximately three
 175 to six months prior to vaccination, the correlation was found between tested results ($r=0.535$; p
 176 $= 0.0399$).



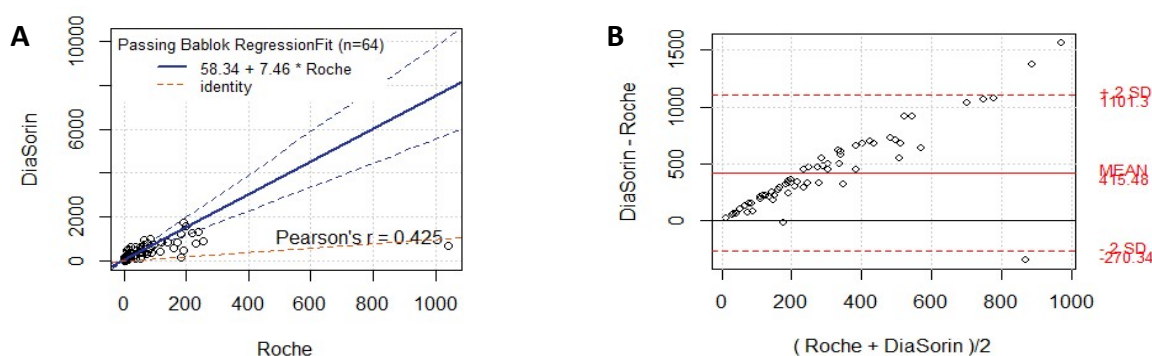
177

178 Figure 2. Passing-Bablok and Bland-Altman plots samples from SCV2-positive collected
 179 before the first dose of the vaccine (n=15), compared with Roche and DiaSorin ELISA tests.

180

181

182 *Detection of SARS-CoV-2 antibody within the SCV2-negative group prior to second vaccine*
183 *dose*
184 Passing-Bablok (Fig. 3A) and Bland-Altman (Fig. 3B) plots for the samples from the SCV2-
185 negative group collected on the day of the second vaccine dose (n=64) and measured with
186 Roche and DiaSorin tests are presented. For SARS-CoV-2 antibody level, medium correlation
187 was observed between compared results of the same samples measured with different
188 diagnostic tests ($r = 0.425$; $p = 0.0005$).



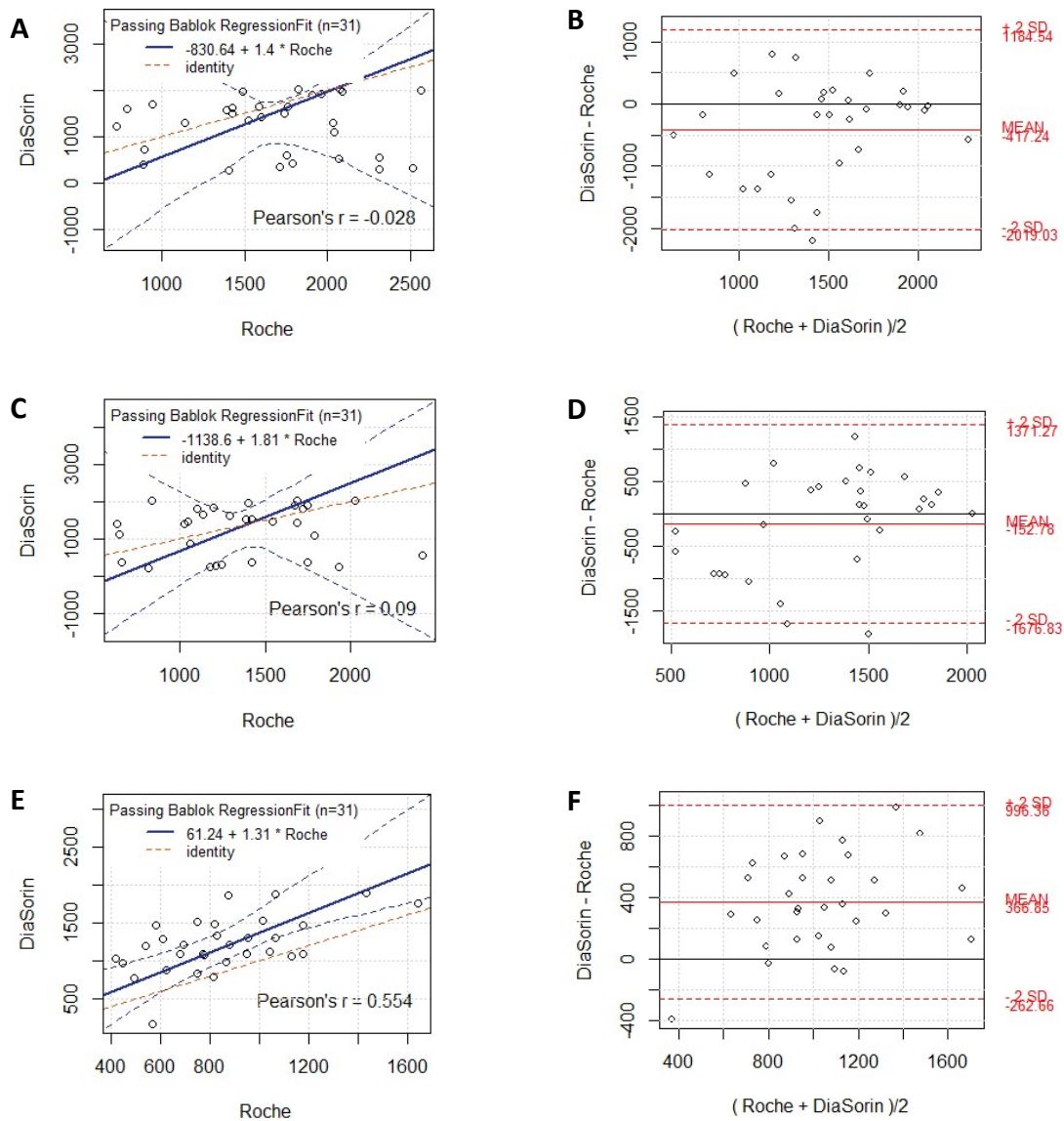
189
190 Figure 3. Passing-Bablok and Bland-Altman plots for SARS-CoV-2 antibody level in the
191 SCV2-negative group on the day of the second vaccine dose.

192
193 *Detection of SARS-CoV-2 antibody within the SCV2-negative group on day 8, 14 and 30 after*
194 *the second dose*

195 Following the second vaccine dose, all patients had their SARS-CoV-2 antibody levels
196 measured on day 8, 14 and 30 after the second dose. Only patients whose results remained
197 within the Roche assay detection limit were included in further comparisons of the result
198 obtained on day 8 (n=31), 14 (n=31) and 30 (n=31). Figure 4 shows Passing-Bablok regression
199 (Fig 4 A, C, E) and Bland-Altman plots (Fig 4 B, D, F).

200 Samples tested 8 (Fig. 4 A, B) and 14 (Fig. 4 C, D) days after the second dose of vaccine present
201 very low correlation of test results ($r = 0.0284$, $p = 0.879$; $r = 0.090$, $p = 0.629$, respectively).

202 The correlation of results of SARS-CoV-2 Ig levels was higher for samples taken 30 days after
203 the second vaccine dose ($r = 0.554$, $p = 0.0012$; Fig. 4 E, F).



204

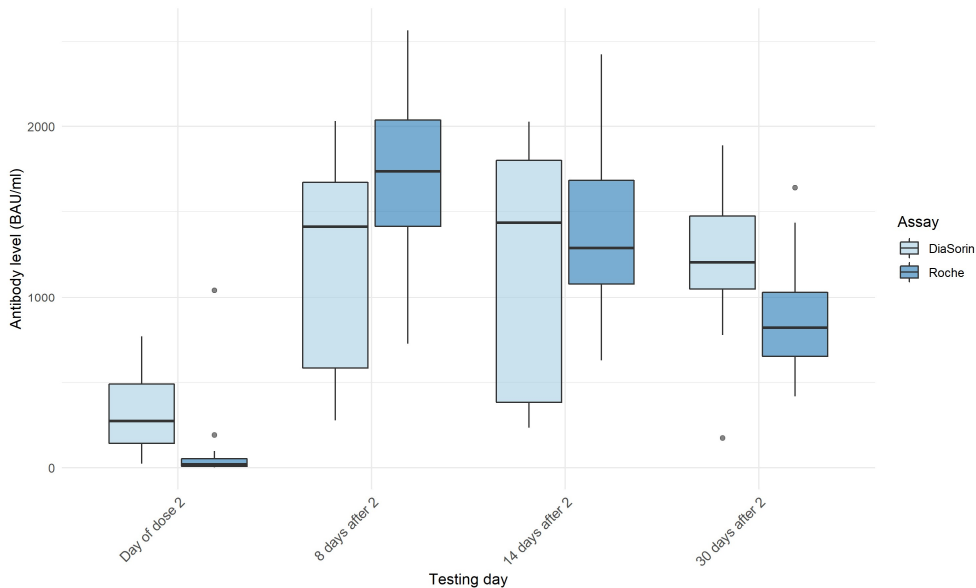
205

206

207 Figure 4. Passing-Bablok and Bland-Altman plots for the subgroup of the SCV2-negative group
 208 that remained within the detection range.

209

210 The dynamics of changes in the antibody levels in tested samples measured with Roche and
 211 DiaSorin tests are shown in Figure 5. The mean result for Roche and DiaSorin tests between
 212 the samples collected on the day of the second dose and 8 days after the second dose was higher
 213 and statistically significant (for both test $p < 0.0001$). However, differences between the results
 214 obtained on day 8 and day 14 ($p < 0.0001$), and day 14 and day 30 ($p < 0.0001$), were higher
 215 and statistically significant only for the Roche assay. In case of the DiaSorin results the
 216 differences were not statistically significant (8/14 day $p = 0.7171$; 14/30 day $p = 0.85$).



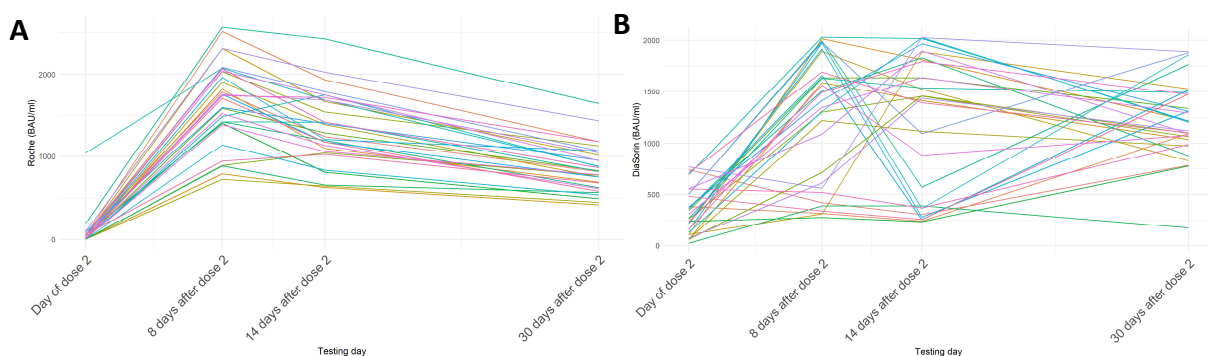
217

218 Figure 5 The SARS-CoV-2 antibody levels at SCV2-negative group measured with the Roche
219 and DiaSorin assays at the day of the second dose and 8, 14 and 30 days of after the second
220 dose of the vaccine.

221

222 Figure 6 presents the dynamics of changes of the SARS-CoV-2 antibody levels in the SCV2-
223 negative group participants whose results remained within the Roche detection limit (n=31).

224 The profile of the SARS-CoV-2 antibody levels in samples measured with the Roche test shows
225 an expected rising of the antibody level 8 days after the second dose and a steady decline 14
226 and 30 days after vaccination. Measurement of the SARS-CoV-2 antibody levels with the
227 DiaSorin test shows diversified profile and heterogeneous dynamics of antibodies changes in
228 the tested samples.



229

230 Figure 6. Dynamics of antibody level changes for individual participants as measured by Roche
231 (A) and DiaSorin (B) assays.

232

233

234

235 **Discussion**

236 The prevalence and high mortality rate associated with SARS-CoV-2 has changed the epidemic,
237 economic, medical, psychological and sociological situation of entire populations. Available
238 vaccines are based on different technologies and will vary concerning the induced immune
239 responses. It is important to validate available methods that can be used to detect previously
240 infected individuals and analyze the response to vaccines. Thus, we examined two IVD kits
241 from major analytical solutions providers (DiaSorin and Roche kits). We confirmed high
242 precision and accuracy of the assays, however, we did observe an increasing difference between
243 the two values when the mean of Ig levels is growing. After division into the SCV2-positive
244 group (confirmed infection approximately three to six months prior to vaccination) and SCV2-
245 negative group, we observed that for the SCV2-positive group the only results that remained
246 within the detection limit for the Roche kit were those obtained before the first dose of the
247 vaccine. In the SCV2-negative group all patients had a result within the Roche detection limit
248 only on the day of the second vaccine dose. Moreover, we found a medium correlation in the
249 SCV2-positive and SCV2-negative group between the Roche and DiaSorin results. When
250 analyzing results that remained within the Roche detection limit, we determined that the
251 correlations dropped down to low for days 8 and 14 and rose to medium for day 30 after the
252 second dose of the vaccine in SCV-negative group. The dynamics of changes of the SARS-
253 CoV-2 antibody levels in SCV2-negative group appears homogenous based on the Roche
254 results but heterogenous when considering the DiaSorin result.

255 The evaluated Roche and DiaSorin kits are of very high quality, require small sample volumes
256 and have short testing times (12ul and 10ul, and 35 minutes and 18 minutes, respectively). Both
257 kits appear to be very useful in assessing the immune response of vaccinated individuals. The
258 Roche kit makes response assessment difficult due to calibration at a relatively low level and
259 technically unfeasible sample dilution above 10x (dilution over 10x leads to unreliable results
260 - unpublished data). The DiaSorin kit has a very wide measurement range and practically every
261 antibody level produced in a vaccinated person falls within the range that can be determined.

262 What is surprising, however, is the large variability in antibody levels when assessing the
263 dynamics of their changes in individual patients, contradicting our knowledge and the results
264 of the Roche kit.

265

266 Antibody response studies to date have mainly relied on results from COVID-19 patients and
267 recovered patients. Studies have mainly addressed qualitative issues - the presence of antibodies
268 and the effectiveness of the kits in detecting infection [7]. The Trabaud study evaluated 8 kits,
269 half of which tested total Ig and the others IgG, four of which assessed binding to the N protein
270 of the virus the others the S protein or its RBD epitome. Their reported sensitivity referred to
271 the percentage of positive results in individuals depending on the time since the onset of disease
272 symptoms. Thus, these data were not based on objective and measurable markers of disease.
273 This study did not look at asymptomatic individuals nor has it included an extended follow-up
274 period after contracting COVID-19. Similarly, the Naaber study [8], although evaluating the
275 clinical use of nine tests, is concerned with investigating the utility of tests to detect or confirm
276 an immune response in the PCR positive patients. A study with a similar objective to ours is a
277 comparison of the quality of automated assays from some of the largest suppliers - Abbott,
278 Roche and DiaSorin by Perkmann et al [9]. This well-conducted study of sensitivity, specificity,
279 and other assay quality parameters based on a very large number of negative samples and 65
280 SARS-CoV-2 RT-PCR confirmed samples measured in median time of 41 after symptoms or
281 RT-PCR confirmation. They found differences in the evaluated assays that would be
282 diagnostically important and would affect their positive predictive value. They concluded that
283 SARS-CoV-2 antibody tests demand a very high specificity due to the low seroprevalences of
284 the disease. However, this study is also difficult to relate directly to our results. This study
285 involved previous sets of both the DiaSorin (SARS-CoV-2 S1/S2 IgG now SARS-CoV-2
286 TrimericS IgG test) and Roche (Anti-SARS-CoV-2 (against nucleocapsid) now Anti-SARS-
287 CoV-2 S assay) assays. Both assays have changed their test domains to allow for greater ability
288 to measure quantitative responses and to prepare them for measuring vaccine responses. The

289 test antigen in the DiaSorin kit (recombinant Trimeric Spike glycoprotein) now allows
290 measurement of antibodies against different epitopes of the S protein. The Roche kit is focused
291 on detection of antibodies against the receptor binding domain (RBD) of the spike (S) protein.
292 The Pfizer, Moderna and Astra Zeneca vaccines elicit antibodies to the RBD of the spike
293 protein. Thus, this facilitates a more precise evaluation of the response to these specific vaccines
294 but may make it more difficult to evaluate vaccines with a broader spectrum of induced
295 response.

296
297 The results of patients who contracted COVID-19 3-6 months prior to vaccination showed
298 complete qualitative agreement. From the results obtained, it can be concluded that the decision
299 on additional vaccination should be based on the level of antibodies 14-21 days after the first
300 dose, and not on the basis of the baseline antibody level.

301 We have analyzed the antibody levels at specified time points after the second dose of the
302 vaccine. Our goal was to assess if the weak correlation is caused by the IgM antibodies that
303 emerge after the first contact with the antigen and persist for approximately six weeks [10].
304 However, our results from samples obtained at time points which should have either no IgM
305 (SVC2-positive prior to vaccination) or minimal IgM (SVC2-negative 30 days after the second
306 vaccine dose – 7 weeks after the first dose) showed only medium correlation between the Roche
307 and DiaSorin results. At the same time we have seen the lowest correlation in the results from
308 days 8 and 14 after the second vaccine dose. These results could possibly be explained by the
309 presence of IgM measured by the Roche assay but not DiaSorin.

310 This study indicates a further need for unification of the standard and cooperation between
311 assay manufacturers to agree on the cross-utility of their tests. Despite manufacturers' claims
312 about the value of the tests, they require external validation to detect problems that may be
313 difficult to define within a commercial organization. Tests still need to be validated for virus
314 neutralization to assess the usefulness of the test in evaluating patient protection against
315 infection and in evaluating the clinical status of the patient.

316 In both cases, the companies confirmed that the results for the WHO reference panel samples
317 are as expected and are easily converted to units of BAU/ml of the WHO international standard
318 (using the conversion factor AU/ml * 2.6 = BAU/ml for the DiaSorin kit and Roche U =
319 0.972*BAU/ml for the Roche kit). The intended use of the International Standard is for the
320 calibration and harmonization of serological assays detecting anti- SARS-CoV-2 neutralizing
321 antibodies. The results obtained do not show any valuable correlation between the tested kits
322 making it impossible to cross evaluate the results between the kits.

323
324 Strengths and limitations of the study require consideration. This study represents a pragmatic
325 comparison of Ig measurement methods using an unselected group of patients referred for
326 clinical Ig measurement before, during and after vaccination. The results still need some
327 independent neutralization antibody measurements tests to be performed for their validation.

328

329 **Conclusion**

330 In conclusion, we found a weak correlation between both tested assay. The WHO International
331 Standard has not improved the harmonization of serological assays detecting anti- SARS-CoV-
332 2 neutralizing antibodies. However, we have demonstrated that both assays can be used
333 clinically for the detection of infected subjects, the convalescents' Ig levels and the confirmation
334 of the vaccination quality and the individual immunological response. The greater precision
335 was exhibited by the Roche kit. The DiaSorin test shows a lot more extensive scope of
336 estimations what reduces the need for sample dilution. On the other hand, Roche results appear
337 better suited to the detection of the results, which we expected as a humoral response to
338 infection. However, the values generated by both assays can be markedly different, and assay-
339 specific and personalized interpretation is required.

340

341

342

343 References

- 344 1. World Health Organization (2020). Establishment of the WHO International Standard
345 and Reference Panel for antiSARS-CoV-2 antibody. WHO/BS/2020.2403. Available at:
346 <https://www.who.int/publications/m/item/WHO-BS-2020.2403>
- 347 2. First WHO International Standard Anti-SARS-CoV-2 Immunoglobulin (Human).
348 Available at:
349 https://www.nibsc.org/products/brm_product_catalogue/detail_page.aspx?catid=20/13
350 [6](#)
- 351 3. Mattiuzzo, Giada, Emma M Bentley, Mark Hassall, and Stephanie Routley.
352 “Establishment of the WHO International Standard and Reference Panel for Anti-
353 SARS-CoV-2 Antibody,” no. December (2020): 9–10.
354 <https://www.who.int/publications/m/item/WHO-BS-2020.2403>.
- 355 4. R Core Team (2020). R: A language and environment for statistical computing. R
356 Foundation for Statistical Computing, Vienna, Austria. URL [https://www.R-](https://www.R-project.org/)
357 [project.org/](#).
- 358 5. Wickham et al., (2019). Welcome to the tidyverse. Journal of Open Source Software,
359 4(43), 1686, <https://doi.org/10.21105/joss.01686>
- 360 6. Ekaterina Manuilova Andre Schuetzenmeister <andre.schuetzenmeister@roche.com>
361 Fabian Model <fabian.model@roche.com> (2014). Method Comparison Regression.
362 R package version 1.2.1. <https://CRAN.R-project.org/package=mcr>
- 363 7. Trabaud, Mary Anne, Vinca Icard, Marie Paule Milon, Antonin Bal, Bruno Lina, and
364 Vanessa Escuret. “Comparison of Eight Commercial, High-Throughput, Automated or
365 ELISA Assays Detecting SARS-CoV-2 IgG or Total Antibody.” *Journal of Clinical*
366 *Virology* 132, no. August (2020): 104613. <https://doi.org/10.1016/j.jcv.2020.104613>.
- 367 8. Naaber, Paul, Kaidi Hunt, Jaana Pesukova, Liis Haljasmagi, Pauliina Rumm, Part
368 Peterson, Jelena Hololejenko, et al. “Evaluation of SARS-CoV-2 IgG Antibody

- 369 Response in PCR Positive Patients: Comparison of Nine Tests in Relation to Clinical
370 Data.” PLoS ONE 15, no. 10 October (2020): 1–10.
371 <https://doi.org/10.1371/journal.pone.0237548>.
- 372 9. Thomas Perkmann, Nicole Perkmann-Nagele, Marie-Kathrin Breyer, Robab Breyer-
373 Kohansal, Otto C Burghuber, Sylvia Hartl, Daniel Aletaha, Daniela Sieghart, Peter
374 Quehenberger, Rodrig Marculescu, Patrick Mucher, Robert Strassl, Oswald F Wagner,
375 Christoph J Binder, Helmuth Haslacher, Side-by-Side Comparison of Three Fully
376 Automated SARS-CoV-2 Antibody Assays with a Focus on Specificity, *Clinical*
377 *Chemistry*, Volume 66, Issue 11, November 2020, Pages 1405–1413,
378 <https://doi.org/10.1093/clinchem/hvaa198>
- 379 10. Nandini S., Sundararaj S. J.; Akihida R. Interpreting Diagnostic Tests for SARS-CoV-
380 2 AuJAMA. Published online May 6, 2020. doi:10.1001/jama.2020.8259