

1

2 **Supplementary Information for**

3 **Economic evaluation of disease elimination: an extension to the net benefits framework and**
4 **application to human African trypanosomiasis**

5 **Marina Antillón, Ching-I Huang, Kat S Rock, Fabrizio Tediosi**

6 **Corresponding author: Marina Antillón.**

7 **E-mail: marina.antillon@swisstph.ch**

8 **This PDF file includes:**

- 9 Supplementary text
- 10 Figs. S1 to S5
- 11 Tables S1 to S4
- 12 SI References

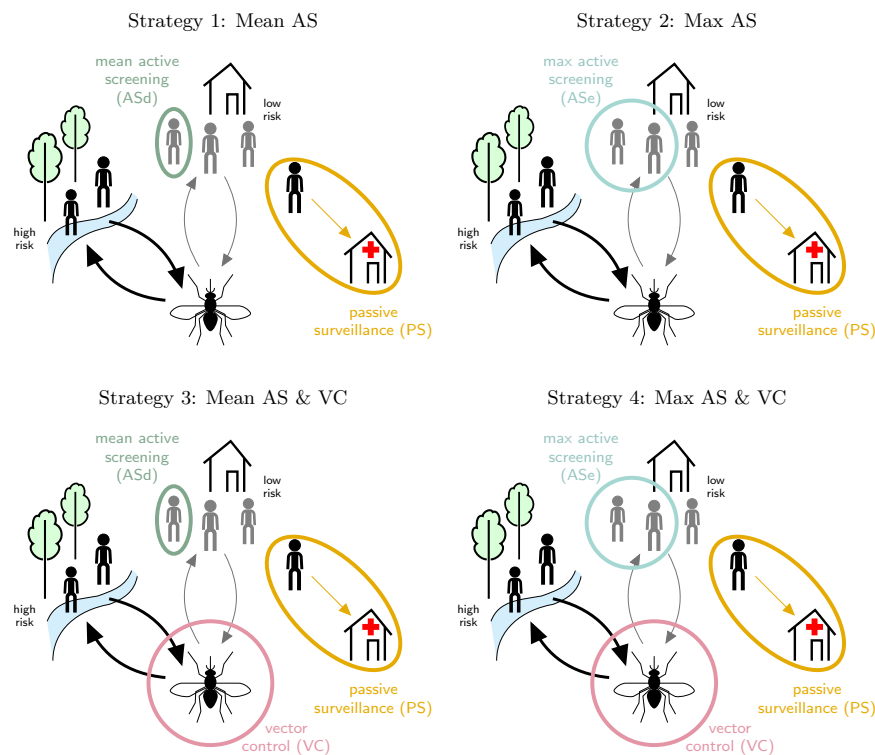


Fig. S1. Model of strategies against gHAT in DRC including active screening (AS) by mobile teams, passive surveillance (PS) in fixed health facilities. Cases detected by either mode are treated. In two strategies ('Mean AS' and 'Mean AS & VC') the active screening coverage is equal to the mean number screened during 2014–2018. In two other strategies ('Max AS' and 'Max AS & VC'), the coverage is the maximum number screened during 2000–2018. In strategies 3 and 4 vector control (VC) is simulated assuming a 80% tsetse density reduction after one year. PS is in place under all strategies. Figure reproduced under the creative commons licence from Antillon *et al.* (48).

13 Supporting Information Text

14 1. Supplementary methods

15 **A. Disease model.** We employed a previously published dynamic, deterministic transmission Susceptible-Exposed-Infected-
 16 Recovered-Suceptible (SEIRS) model. While the model is detailed elsewhere (45?), briefly, we simulated gHAT illness and
 17 vector transmission in a compartmental model described by deterministic features, simulated using a set of ordinary differential
 18 equations. The stochastic nature of the observations was conferred by sampling from the infected prevalence to simulate those
 19 individuals who are diagnosed and report for treatment, either in a fixed health facility or to a mobile screening unit, and
 20 whether imperfect diagnostics correctly detect cases or identifies non-infected people as cases.

21 A Markov Chain Monte Carlo (MCMC) approach was previously used to generate posterior parameter sets for which the
 22 model outputs match the longitudinal data for different regions of the Democratic Republic of Congo (DRC) during 2000–2016.
 23 In the present study we selected three example regions – Kwamouth (Region 1), Mosango (Region 2), and Sia (Region 3) – of
 24 the 168 originally fitted in order to highlight diverse results of our new framework. The locations used in the current analysis
 25 are described in Table S1.

Table S1. Descriptive summaries of three health zones.

Characteristic	Kwamouth	Mosango	Sia
Province	Mai-Ndombe	Kwilu	Kwilu
Population (2016 est.)	131,022	125,076	114,041
Area (km ²)	14,589	2,606	2,990
Active screening as a percent of 2016 population (mean; max)	48; 69	34; 60	19; 30
HAT testing centers (2014 est.)	5	1	1
Yearly incidence per 10,000 (2014–2018)	8.70	0.99	1.02
WHO Incidence category (2014–2018)	Moderate	Low	Moderate
Vector control extent (linear km)	432	210	210
Vector control density (targets per linear km)	40	40	40

N.B.: For Kwamouth, the extent of riverbank where vector control must be performed is informed by planned activities. For Mosango and Sia, assumptions regarding vector control are based on the experience in places of similar size.

26 B. Strategies and intervention model.

27 **B.1. Medical Interventions.** While the projections of strategies have been detailed in previously published manuscripts (47, 48), we
28 provide a brief sketch of the features of the simulation within the context of the current analysis. To determine the number of
29 cases detected by screening as well as the time lived with disease for cases that were never detected, we simulated a diagnostic
30 algorithm combined with the prevalence determined by the transmission model. Although diagnostic algorithms are elaborate
31 in practice, we simulated a simple algorithm that would capture the major features of the real process (? ?). Suspects in
32 traditional active or passive surveillance activities are first screened by the Card Agglutination tests for Trypanosomiasis (CATT)
33 or rapid diagnostic tests (RDTs). Serologically-positive suspects then have blood drawn for microscopy, and if trypanosoma are
34 found, a patient undergoes a lumbar puncture to stage their disease (early infection is “stage 1” and late is “stage 2”) and
35 determine care. For those ineligible for oral fexinidazole treatment, staging of the disease is done via lumbar puncture and
36 followed by either treatment with pentamidine (stage 1) or nifurtimox-eflornithine combination treatment (NECT, stage 2)
37 (26, 48).

38 **B.2. Vector control.** To control the population of tsetse, special “Tiny Targets” have been developed that stand on riversides –
39 typical tsetse habitat – and deliver deadly insecticide upon contact (27? ? ?). The advantage of this method of control of
40 disease is that it breaks the chain of transmission, even when some cases cannot be reached for treatment. Activities entail
41 placing Tiny Targets alongside the riverbanks twice per year for as many years as it takes to see a decline in the transmission
42 of cases. The impact of these activities on tsetse density has been documented elsewhere (27?) and its impact on disease
43 transmission has been evaluated in one modeling study for Chad (29) and through analysis of case reporting in Guinea (?).

44 In our study, we calculate that vector control will have to be deployed along 437 km of riverbank in Kwamouth but only 210
45 km of riverbank in Mosango and Sia. The reason is that we assumed that smaller health zones like Mosango and Sia would
46 need vector control activities closer to those in Yasa Bonga, a health zone of 2,606 km² (?). Kwamouth, by contrast, spans
47 14,589 km² and contains two hot spots of transmission and therefore requires a broader treatment of riverbanks (48).

48 **B.3. Interventions in the endgame.** In simulating the end-game, we also assumed that additional confirmatory procedures such
49 as video microscopy (or lab-based tests) are being used to elevate the previous high specificity of screening algorithms (\approx
50 99.9%) to 100% in this context of diminishing prevalence (45). We further simulate the impact of stopping active screening and
51 vector control interventions (where applicable) based on observing three consecutive years of zero cases reporting (in either
52 active screening or passive surveillance). Our algorithm would allow restarting active screening should further cases later arise
53 through continuing passive detection. This cessation criterion is not only plausible in practice (it is unlikely that interventions
54 would continue indefinitely) but also is important in capturing the impact of stopping transmission and therefore saving future
55 intervention costs.

56 **C. Key outputs.** The key outputs of the dynamic and diagnostic models include mortality in undetected cases, detected cases
57 in stages 1 and 2, and DALYs before and after presenting to care for all interventions. The number of people actively screened,
58 and number (if any) of vector deployments performed each year is recorded.

59 **D. Elimination of Transmission.** Elimination of transmission (EOT) is assumed when the underlying transmission (not detected
60 cases) falls below 1 new infection per year (this proxy threshold is necessary when using a deterministic model to approximate
61 peri-elimination dynamics and has been used elsewhere (47?). The metric of interest in this paper is regional EOT (where
62 baseline activities must remain to prevent re-establishment) rather than eradication because we are not treating the issue of
63 importation of cases (?). This is also related to the World Health Organization’s gHAT goal for 2030 which is global EOT to
64 humans (43).

65 **E. Health impact.** We measured health impact by combining the epidemiological outputs from the dynamic/screening model
66 with a probability tree that simulates the branching process of treatment progression and disease outcomes.

67 In accordance with the WHO interim guidelines on gHAT treatment (26), we assumed that treatment would consist of
68 1800 mg of fexinidazole for four days and 1200 mg of fexinidazole for six days for most patients in stage 1 and 2 disease. We
69 assumed that patients would be treated in equal parts on an inpatient and outpatient basis (as directly-observed therapy).
70 Patients who were either under 6 years old or under 20 kg in weight, undergo a lumbar puncture to determine disease stage
71 and are sorted accordingly into pentamidine or NECT inpatient treatment.

72 We simulated the disease process separately for stage 1 and stage 2 disease, and a small proportion of stage 1 cases are
73 assumed not cooperate with care or to undergo treatment failure, and are thus added to the number of cases that undergo
74 stage 2 care.

75 The disease and treatment probability tree model is deterministic, formalized mathematically through the product of
76 conditional probabilities of the outcome at each stage of disease and treatment progression (Fig S2). The disease tree model for
77 stage 1 includes: follow-up (for patients lost-to-follow-up), the presence of side effects, treatment success or failure, diagnosis
78 (in the case of treatment failure), and progression to stage 2 treatment (if applicable). For stage 2, additional steps include
79 death due to treatment and the process of rescue treatment (for patients who fail first-choice treatment for stage 2).

80 Health burden is denominated in DALYs, but we report cases and deaths for the benefit of the reader (Table 3). The
81 probability of EOT is denominated as a probability, and we treat it separately to DALYs averted.

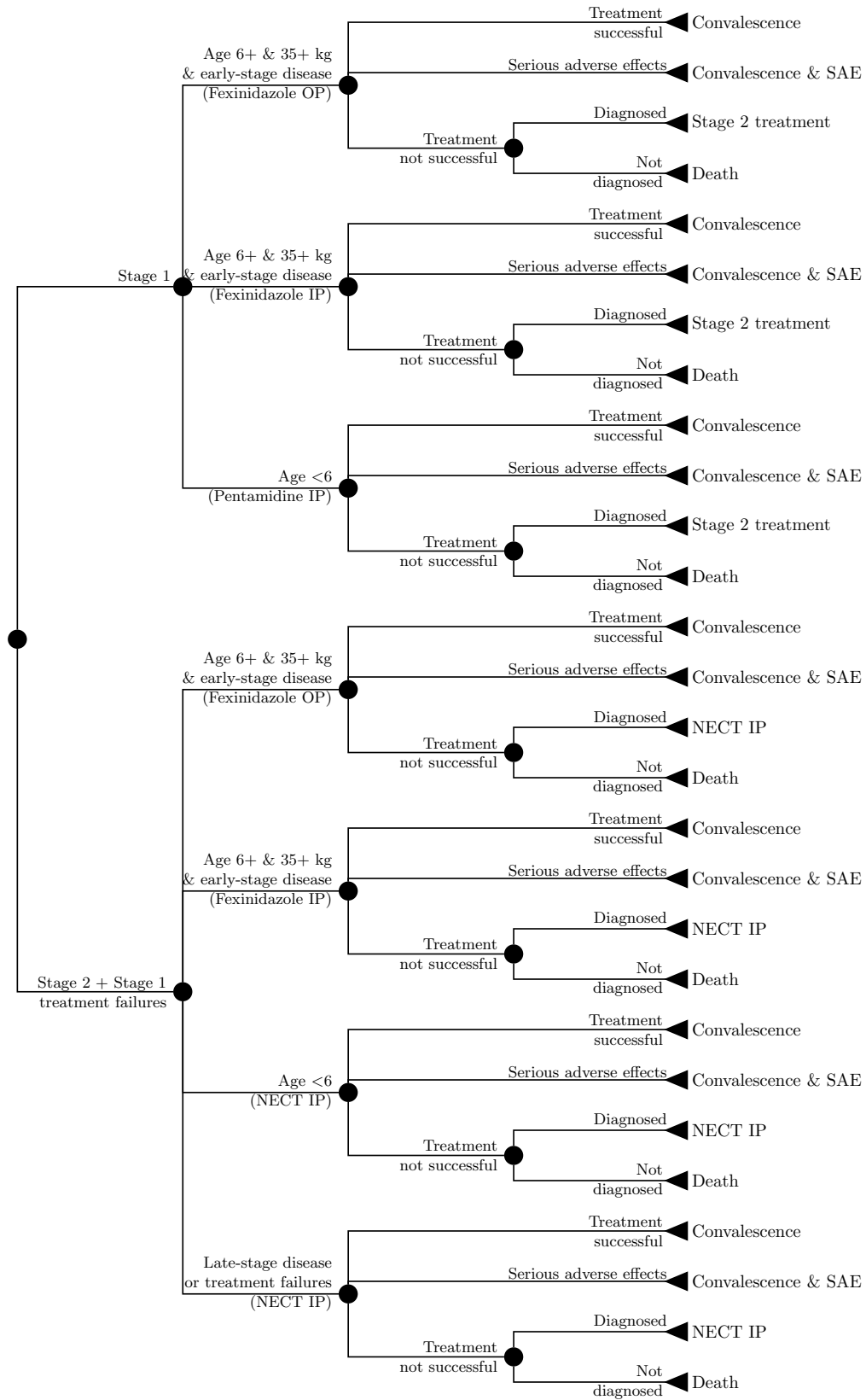


Fig. S2. Model of treatment for gHAT stages 1 and 2. Figure reproduced under the creative commons licence from Antillon *et al* (48).

82 **F. Costs.** We performed our analysis using the health payer perspective, and therefore, only direct medical costs are included
83 in our analysis. The cost function structure is identical to that described in (48), and therefore we only briefly describe the
84 main features here, but assumptions behind consumption vary slightly.

85 Intervention costs are estimated as the product of unit costs and appropriate units as informed by the extant literature on
86 interventions and our collaborators in DRC. Accelerating costs per case found towards the end-game is the results from a
87 decreasing number of cases.

88 Disease costs are linked to the probability tree model of treatment progression, and include diagnosis, confirmation, and
89 staging, as well as the cost of the drug itself and the administration. Costs values are drawn from the literature. Where no cost
90 data existed, WHO CHOICE costs were used. All costs are inflated to 2018 US\$ values.

91 As with the health impact, we compute costs using a 20-year time-horizon to allow time to consider the economic rewards of
92 elimination by 2030. However, any other choice of time horizon would be equally amenable to use in this new framework.

93 **G. Cost-effectiveness.**

94 **G.1. Risk-averse vs risk-neutral decision-makers.** The normative interpretation can be made in two ways: a risk-averse decision-
95 maker will select the strategy that has the highest chance of being cost-effective; however, the risk-neutral decision-maker
96 might not, due to an interesting feature in probabilistic simulations. One might note that in situations in which the probability
97 distributions of the parameters in the simulation are asymmetric, some interventions might have a lower median than a mean,
98 due to long tails in their distributions, thus sometimes yielding low probabilities of cost-effectiveness among all simulations but
99 high expectations in the NMB. A risk-neutral decision-maker who looks only to maximize the health returns on a given WTP
100 would choose the strategy with the highest expected NMB:

$$101 \quad \underset{k \in 1:J}{\operatorname{argmax}} \mathbb{E}(\text{NMB}(k, \theta_i | \lambda^{\text{WTP}}))$$

102 That debate is beyond the scope of the paper, and we will proceed with an assumption of a risk-neutral decision-maker.

103 **G.2. Time horizons.** We chose a 20-year time-horizon starting in 2020 to allow the economic rewards of elimination by 2030 to be
104 reaped.

Table S2. Intermediate outcomes, cost-effectiveness, and efficiency of elimination in Region 1.

	Mean AS	Max AS	Mean AS & VC	Max AS & VC
Basic outputs				
Cases	477 (144, 1,081)	463 (136, 1,047)	116 (41, 235)	120 (38, 270)
Deaths	207 (41, 614)	174 (36, 499)	54 (18, 115)	49 (16, 105)
DALYs	3,939 (886, 11,007)	3,336 (779, 9,161)	1,185 (405, 2,494)	1,077 (362, 2,280)
Δ DALYs	Comparator	602 (-191, 2,221)	2,754 (339, 8,765)	2,862 (382, 8,956)
Costs (USD, \times 1000)	3,101 (2,153, 4,736)	4,023 (2,734, 6,308)	3,811 (2,464, 6,007)	4,284 (2,732, 6,731)
Δ Costs (USD, \times 1000)	Comparator	921 (451, 1,619)	709.8 (-763.9, 2,765)	1,182 (-291.7, 3,415)
ICER	Minimum cost	Dominated	258	4,373
Pr. EOT	0	0	100	100
Δ Pr. EOT	Comparator	0	100	100
$\lambda_{DALY}^{WTP} = 0$ USD				
NMB (USD, \times 1000)	0 (0, 0)	-921.2 (-1,619, -450.7)	-709.8 (-2,765, 763.9)	-1,182 (-3,415, 291.7)
Justifiable costs (USD, \times 1000)	Preferred	0 (0, 0)	0 (0, 0)	0 (0, 0)
Premium _{EOT} (USD, \times 1000)	Preferred	921 (451, 1,619)	710 (0, 2,765)	1,182 (0, 3,415)
Δ Premium _{EOT} / Δ Pr. EOT (vs Preferred, USD)	Preferred	No advantage	7,098	11,821
Δ Premium _{EOT} / Δ Pr. EOT (incremental, USD)	Preferred	Dominated	7,098	Dominated
$\lambda_{DALY}^{WTP} = 250$ USD				
NMB (USD, \times 1000)	0 (0, 0)	-770.6 (-1,501, -211.2)	-21.37 (-2,486, 2,287)	-466.7 (-3,096, 1,838)
Justifiable costs (USD, \times 1000)	Preferred	150.6 (-47.86, 555.2)	688 (85, 2,191)	715 (95, 2,239)
Premium _{EOT} (USD, \times 1000)	Preferred	771 (211, 1,501)	21 (0, 2,486)	467 (0, 3,096)
Δ Premium _{EOT} / Δ Pr. EOT (vs Preferred, USD)	Preferred	No advantage	214	4,667
Δ Premium _{EOT} / Δ Pr. EOT (incremental, USD)	Preferred	Dominated	214	Dominated
$\lambda_{DALY}^{WTP} = 500$ USD				
NMB (USD, \times 1000)	0 (0, 0)	-620 (-1,430, 243.9)	667 (-2,248, 4,273)	248.7 (-2,845, 3,910)
Justifiable costs (USD, \times 1000)	Suboptimal	Suboptimal	Preferred	54.01 (-146.8, 280)
Premium _{EOT} (USD, \times 1000)	Suboptimal	Suboptimal	Preferred	418 (0, 1,839)
Δ Premium _{EOT} / Δ Pr. EOT (vs Preferred, USD)	Suboptimal	Suboptimal	Preferred	No advantage
Δ Premium _{EOT} / Δ Pr. EOT (incremental, USD)	Suboptimal	Suboptimal	Preferred	Dominated
$\lambda_{DALY}^{WTP} = 1000$ USD				
NMB (USD, \times 1000)	0 (0, 0)	-318.9 (-1,379, 1,296)	2,044 (-1,813, 8,517)	1,680 (-2,418, 8,327)
Justifiable costs (USD, \times 1000)	Suboptimal	Suboptimal	Preferred	108 (-293.6, 560.1)
Premium _{EOT} (USD, \times 1000)	Suboptimal	Suboptimal	Preferred	364 (0, 1,825)
Δ Premium _{EOT} / Δ Pr. EOT (vs Preferred, USD)	Suboptimal	Suboptimal	Preferred	No advantage
Δ Premium _{EOT} / Δ Pr. EOT (incremental, USD)	Suboptimal	Suboptimal	Preferred	Dominated
$\lambda_{DALY}^{WTP} = 1500$ USD				
NMB (USD, \times 1000)	0 (0, 0)	-17.69 (-1,404, 2,406)	3,421 (-1,469, 12,859)	3,110 (-2,036, 12,765)
Justifiable costs (USD, \times 1000)	Suboptimal	Suboptimal	Preferred	162 (-440.4, 840.1)
Premium _{EOT} (USD, \times 1000)	Suboptimal	Suboptimal	Preferred	310 (0, 1,846)
Δ Premium _{EOT} / Δ Pr. EOT (vs Preferred, USD)	Suboptimal	Suboptimal	Preferred	No advantage
Δ Premium _{EOT} / Δ Pr. EOT (incremental, USD)	Suboptimal	Suboptimal	Preferred	Dominated

¹ A dominated strategy is one that has a higher cost but averts fewer DALYs or has the same or lower probability of EOT than a less expensive strategy.

² We do not show prediction intervals for ICERs as there are a variety of issues with the mathematical properties of such constructions (21).

³ For context on the values of λ_{DALY}^{WTP} that we have chosen to display, see Table 2.

Table S3. Intermediate outcomes, cost-effectiveness, and efficiency of elimination in Region 2.

	Mean AS	Max AS	Mean AS & VC	Max AS & VC
Basic outputs				
Cases	23 (1, 79)	22 (0, 92)	9 (0, 41)	10 (0, 54)
Deaths	12 (1, 42)	8 (0, 28)	5 (0, 15)	4 (0, 12)
DALYs	247 (20, 803)	167 (2, 564)	106 (1, 318)	82 (1, 262)
ΔDALYs	Comparator	80 (-87, 366)	142 (-41, 551)	165 (-21, 597)
Costs (USD, × 1000)	1,029 (508, 1,841)	1,407 (637, 2,652)	1,258 (636, 2,068)	1,529 (743, 2,544)
ΔCosts (USD, × 1000)	Comparator	377.5 (-164.3, 1,105)	229 (-451.9, 933.8)	499.7 (-209.8, 1,335)
ICER	Minimum cost	Dominated	1,615	11,578
Pr. EOT	79	92	100	100
ΔPr. EOT	Comparator	13	21	21
$\lambda_{DALY}^{WTP} = 0$ USD				
NMB (USD, × 1000)	0 (0, 0)	-377.5 (-1,105, 164.3)	-229 (-933.8, 451.9)	-499.7 (-1,335, 209.8)
Justifiable costs (USD, × 1000)	Preferred	0 (0, 0)	0 (0, 0)	0 (0, 0)
Premium _{EOT} (USD, × 1000)	Preferred	377 (0, 1,105)	229 (0, 934)	500 (0, 1,335)
ΔPremium _{EOT} /ΔPr. EOT (vs Preferred, USD)	Preferred	29,126	10,684	23,318
ΔPremium _{EOT} /ΔPr. EOT (incremental, USD)	Preferred	Dominated	10,684	Dominated
$\lambda_{DALY}^{WTP} = 250$ USD				
NMB (USD, × 1000)	0 (0, 0)	-357.5 (-1,073, 177)	-193.5 (-912.2, 515.7)	-458.4 (-1,300, 271.7)
Justifiable costs (USD, × 1000)	Preferred	20 (-21.73, 91.53)	35.43 (-10.22, 137.7)	41.28 (-5.223, 149.3)
Premium _{EOT} (USD, × 1000)	Preferred	357 (0, 1,073)	194 (0, 912)	458 (0, 1,300)
ΔPremium _{EOT} /ΔPr. EOT (vs Preferred, USD)	Preferred	27,582	9,031	21,391
ΔPremium _{EOT} /ΔPr. EOT (incremental, USD)	Preferred	Dominated	9,031	Dominated
$\lambda_{DALY}^{WTP} = 500$ USD				
NMB (USD, × 1000)	0 (0, 0)	-337.5 (-1,048, 189.1)	-158.1 (-889.4, 593.1)	-417.1 (-1,269, 339.8)
Justifiable costs (USD, × 1000)	Preferred	40.01 (-43.47, 183.1)	70.87 (-20.45, 275.4)	82.56 (-10.45, 298.7)
Premium _{EOT} (USD, × 1000)	Preferred	337 (0, 1,048)	158 (0, 889)	417 (0, 1,269)
ΔPremium _{EOT} /ΔPr. EOT (vs Preferred, USD)	Preferred	26,039	7,377	19,465
ΔPremium _{EOT} /ΔPr. EOT (incremental, USD)	Preferred	Dominated	7,377	Dominated
$\lambda_{DALY}^{WTP} = 1000$ USD				
NMB (USD, × 1000)	0 (0, 0)	-297.4 (-1,013, 235.9)	-87.23 (-854.9, 779.6)	-334.6 (-1,225, 533.6)
Justifiable costs (USD, × 1000)	Preferred	80.02 (-86.94, 366.1)	141.7 (-40.89, 550.7)	165.1 (-20.89, 597.3)
Premium _{EOT} (USD, × 1000)	Preferred	297 (0, 1,013)	87 (0, 855)	335 (0, 1,225)
ΔPremium _{EOT} /ΔPr. EOT (vs Preferred, USD)	Preferred	22,951	4,070	15,613
ΔPremium _{EOT} /ΔPr. EOT (incremental, USD)	Preferred	Dominated	4,070	Dominated
$\lambda_{DALY}^{WTP} = 1500$ USD				
NMB (USD, × 1000)	0 (0, 0)	-257.4 (-977.1, 312)	-16.36 (-817.6, 1,003)	-252 (-1,186, 766.8)
Justifiable costs (USD, × 1000)	Preferred	120 (-130.4, 549.2)	212.6 (-61.34, 826)	247.7 (-31.34, 896)
Premium _{EOT} (USD, × 1000)	Preferred	257 (0, 977)	16 (0, 818)	252 (0, 1,186)
ΔPremium _{EOT} /ΔPr. EOT (vs Preferred, USD)	Preferred	19,864	764	11,760
ΔPremium _{EOT} /ΔPr. EOT (incremental, USD)	Preferred	Dominated	764	Dominated

¹ A dominated strategy is one that has a higher cost but averts fewer DALYs or has the same or lower probability of EOT than a less expensive strategy.

² We do not show prediction intervals for ICERs as there are a variety of issues with the mathematical properties of such constructions (21).

³ For context on the values of λ_{DALY}^{WTP} that we have chosen to display, see Table 2.

Table S4. Intermediate outcomes, cost-effectiveness, and efficiency of elimination in Region 3.

	Mean AS	Max AS	Mean AS & VC	Max AS & VC
Basic outputs				
Cases	65 (2, 224)	64 (1, 264)	27 (1, 84)	31 (0, 122)
Deaths	32 (1, 137)	19 (0, 89)	14 (0, 54)	10 (0, 44)
DALYs	676 (23, 2,809)	414 (4, 1,885)	336 (10, 1,245)	242 (3, 1,008)
ΔDALYs	Comparator	262 (-38, 1,133)	340 (-50, 1,684)	434 (-14, 1,926)
Costs (USD, × 1000)	970 (524, 1,552)	1,164 (573, 2,058)	1,622 (869, 2,793)	1,659 (882, 3,023)
ΔCosts (USD, × 1000)	Comparator	193.5 (-138.4, 599.4)	651 (16, 1,613)	689 (38, 1,763)
ICER	Minimum cost	740	Weakly dominated	2,875
Pr. EOT	42	54	100	100
ΔPr. EOT	Comparator	12	58	58
$\lambda_{DALY}^{WTP} = 0$ USD				
NMB (USD, × 1000)	0 (0, 0)	-193.5 (-599.4, 138.4)	-651.4 (-1,613, -15.83)	-689 (-1,763, -37.58)
Justifiable costs (USD, × 1000)	Preferred	0 (0, 0)	0 (0, 0)	0 (0, 0)
Premium _{EOT} (USD, × 1000)	Preferred	194 (0, 599)	651 (16, 1,613)	689 (38, 1,763)
ΔPremium _{EOT} /ΔPr. EOT (vs Preferred, USD)	Preferred	15,747	11,210	11,858
ΔPremium _{EOT} /ΔPr. EOT (incremental, USD)	Preferred	Weakly Dominated	11,210	Dominated
$\lambda_{DALY}^{WTP} = 250$ USD				
NMB (USD, × 1000)	0 (0, 0)	-128.1 (-505.5, 180.6)	-566.4 (-1,507, 121.2)	-580.5 (-1,602, 141.1)
Justifiable costs (USD, × 1000)	Preferred	65.4 (-9,513, 283.2)	84.99 (-12.61, 421.1)	108.5 (-3,581, 481.5)
Premium _{EOT} (USD, × 1000)	Preferred	128 (0, 505)	566 (0, 1,507)	581 (0, 1,602)
ΔPremium _{EOT} /ΔPr. EOT (vs Preferred, USD)	Preferred	10,425	9,747	9,991
ΔPremium _{EOT} /ΔPr. EOT (incremental, USD)	Preferred	Weakly Dominated	9,747	Dominated
$\lambda_{DALY}^{WTP} = 500$ USD				
NMB (USD, × 1000)	0 (0, 0)	-62.72 (-449, 325.5)	-481.4 (-1,416, 383.2)	-472.1 (-1,476, 431.8)
Justifiable costs (USD, × 1000)	Preferred	130.8 (-19.03, 566.4)	170 (-25.21, 842.2)	217 (-7,162, 963.1)
Premium _{EOT} (USD, × 1000)	Preferred	63 (0, 449)	481 (0, 1,416)	472 (0, 1,476)
ΔPremium _{EOT} /ΔPr. EOT (vs Preferred, USD)	Preferred	5,103	8,285	8,123
ΔPremium _{EOT} /ΔPr. EOT (incremental, USD)	Preferred	5,103	Dominated	8,934
$\lambda_{DALY}^{WTP} = 1000$ USD				
NMB (USD, × 1000)	0 (0, 0)	68.09 (-394.3, 789.6)	-311.4 (-1,304, 1,036)	-255.1 (-1,295, 1,237)
Justifiable costs (USD, × 1000)	Suboptimal	Preferred	78.35 (-149.3, 689.6)	172.4 (-62.55, 933.8)
Premium _{EOT} (USD, × 1000)	Suboptimal	Preferred	380 (0, 1,307)	323 (0, 1,274)
ΔPremium _{EOT} /ΔPr. EOT (vs Preferred, USD)	Suboptimal	Preferred	8,283	7,053
ΔPremium _{EOT} /ΔPr. EOT (incremental, USD)	Suboptimal	Preferred	Dominated	7,053
$\lambda_{DALY}^{WTP} = 1500$ USD				
NMB (USD, × 1000)	0 (0, 0)	198.9 (-365.1, 1,352)	-141.5 (-1,234, 1,792)	-38.07 (-1,204, 2,134)
Justifiable costs (USD, × 1000)	Suboptimal	Preferred	117.5 (-224, 1,034)	258.5 (-93.82, 1,401)
Premium _{EOT} (USD, × 1000)	Suboptimal	Preferred	340 (0, 1,305)	237 (0, 1,235)
ΔPremium _{EOT} /ΔPr. EOT (vs Preferred, USD)	Suboptimal	Preferred	7,428	5,172
ΔPremium _{EOT} /ΔPr. EOT (incremental, USD)	Suboptimal	Preferred	Dominated	5,172

¹ A dominated strategy is one that has a higher cost but averts fewer DALYs or has the same or lower probability of EOT than a less expensive strategy.

² We do not show prediction intervals for ICERs as there are a variety of issues with the mathematical properties of such constructions (21).

³ For context on the values of λ_{DALY}^{WTP} = that we have chosen to display, see Table 2.

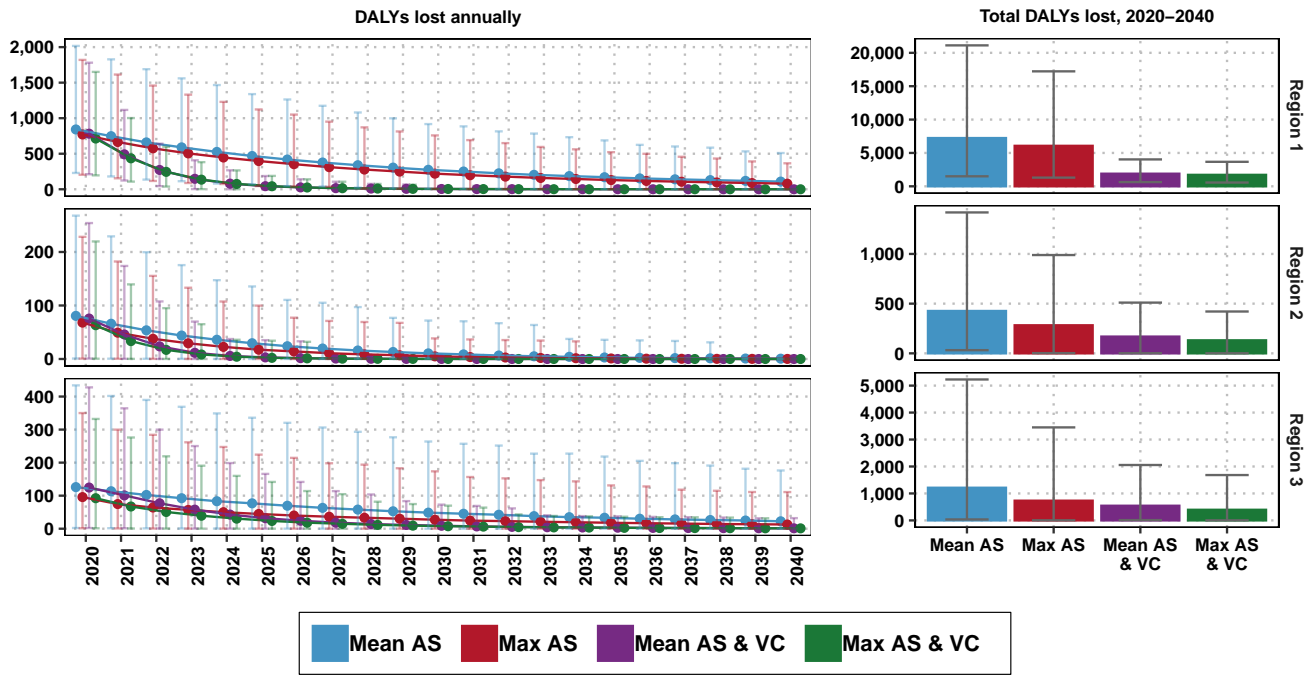


Fig. S3. Components of mean annual and cumulative costs, by strategy and location. Displayed costs are not discounted. Treatment costs, indicated in purple, are shown here although they are so small as to be hardly visible.

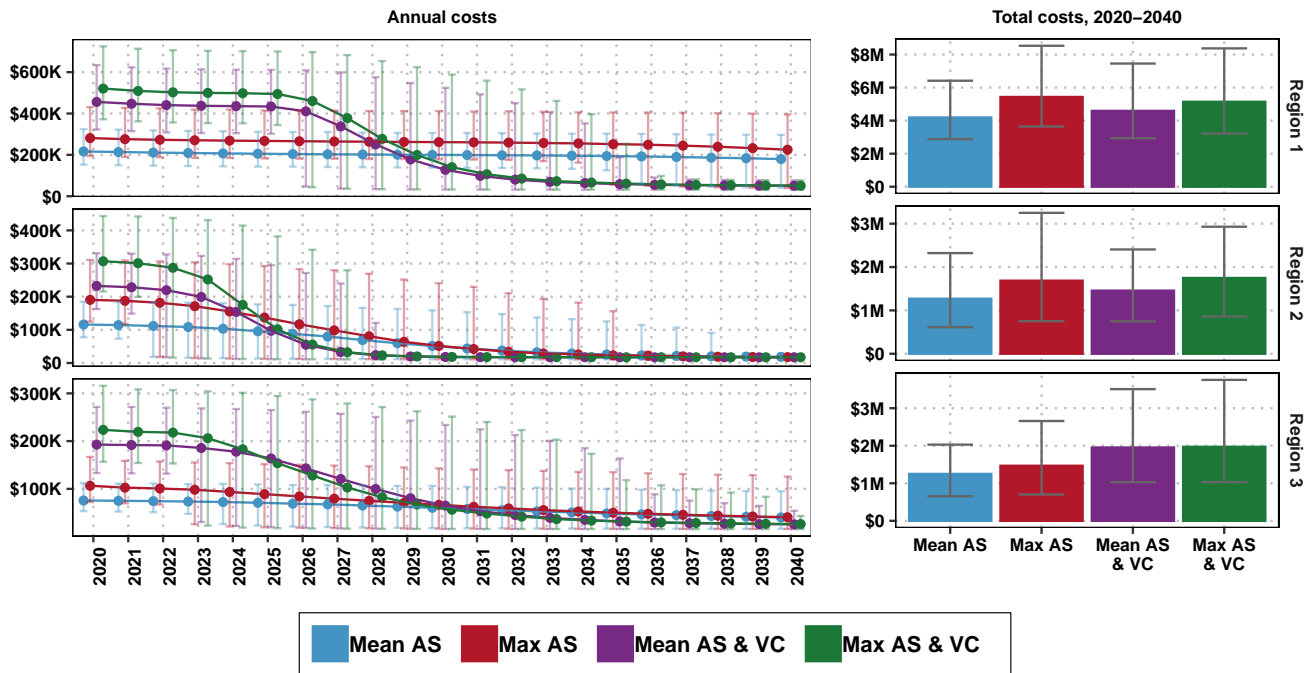


Fig. S4. Disability-adjusted life-years (DALYs) lost per strategy by location, 2020-2040. DALYs are not discounted. Estimates shown are means and their 95% predictive intervals (PI).

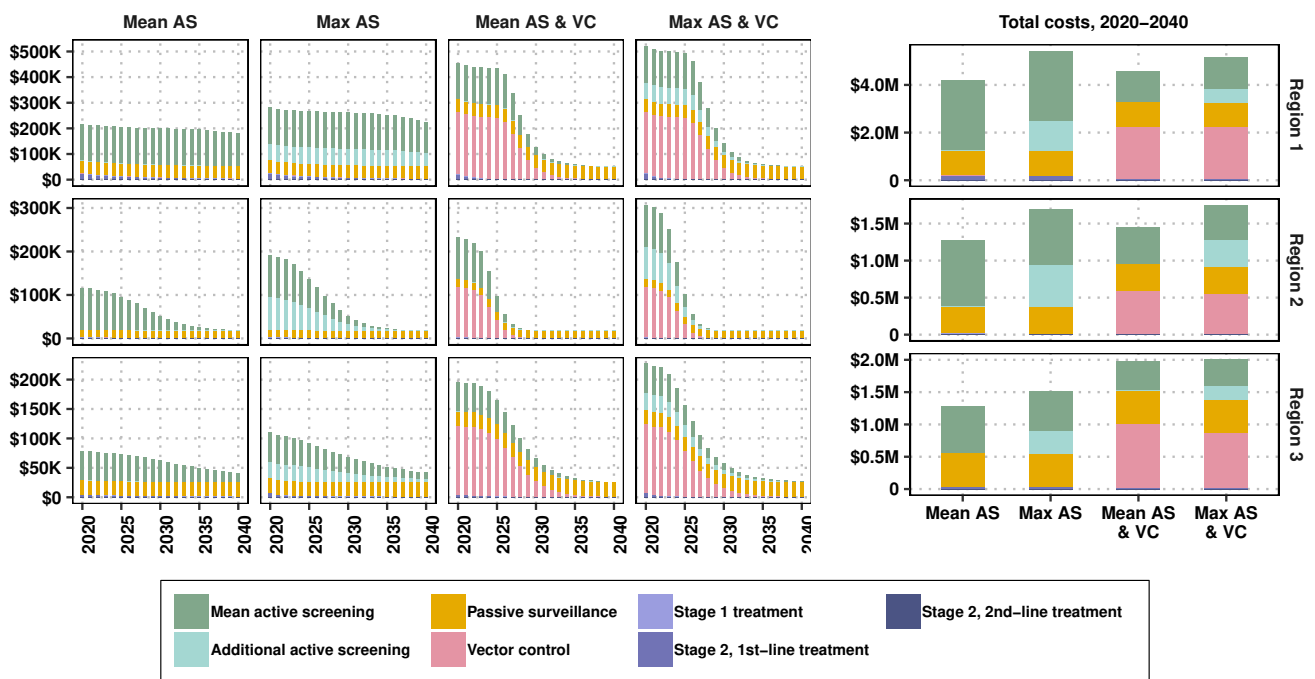


Fig. S5. Costs per strategy by location, 2020-2040. Costs are not discounted. Estimates shown are means and their 95% predictive intervals (PI).

106 **References**

- 107 1. T Fürst, et al., Global health policy and neglected tropical diseases: Then, now, and in the years to come. *PLOS Neglected*
108 *Trop. Dis.* **11**, e0005759 (2017).
- 109 2. M Bangert, DH Molyneux, SW Lindsay, C Fitzpatrick, D Engels, The cross-cutting contribution of the end of neglected
110 tropical diseases to the sustainable development goals. *Infect. Dis. Poverty* **6**, 1–20 (2017).
- 111 3. S Barrett, Economic considerations for the eradication endgame. *Philos. Transactions Royal Soc. B: Biol. Sci.* **368**,
112 20120149–20120149 (2013).
- 113 4. World Health Organization, Global Wild Poliovirus 2016–2021 (2021).
- 114 5. M Zimmermann, B Hagedorn, H Lyons, Projection of Costs of Polio Eradication Compared to Permanent Control. *J.*
115 *Infect. Dis.* **221**, 561–565 (2020).
- 116 6. C Fitzpatrick, et al., The cost-effectiveness of an eradication programme in the end game: Evidence from guinea worm
117 disease. *PLOS Neglected Trop. Dis.* **11** (2017).
- 118 7. L Roberts, Battle to wipe out Guinea worm stumbles. World Health Organization delays target date for eradicating the
119 parasite to 2030. *Nature* **574**, 157–158 (2019).
- 120 8. O Razum, et al., Polio: From eradication to systematic, sustained control. *BMJ Glob. Heal.* **4**, 1–4 (2019).
- 121 9. P Klepac, R Laxminarayan, BT Grenfell, Synthesizing epidemiological and economic optima for control of immunizing
122 infections. *Proc. Natl. Acad. Sci.* **108**, 14366–14370 (2011).
- 123 10. P Klepac, I Megiddo, BT Grenfell, R Laxminarayan, Self-enforcing regional vaccination agreements. *J. Royal Soc. Interface*
124 **13** (2016).
- 125 11. WJ Probert, et al., Decision-making for foot-and-mouth disease control: Objectives matter. *Epidemics* **15**, 10–19 (2016).
- 126 12. S Verguet, DT Jamison, Health Policy Analysis: Applications of Extended Cost-Effectiveness Analysis Methodology in
127 Disease Control Priorities, Third Edition in *Disease Control Priorities: Improving Health and Reducing Poverty*. pp.
128 157–166 (2017).
- 129 13. AA Stinnett, J Mullahy, Net Health Benefits: A New Framework for the Analysis of Uncertainty in Cost-Effectiveness
130 Analysis. *Med. Decis. Mak.* **18**, S68–S80 (1998).
- 131 14. E Fenwick, K Claxton, M Sculpher, Representing uncertainty: The role of cost-effectiveness acceptability curves. *Heal.*
132 *Econ.* **10**, 779–787 (2001).
- 133 15. E Marseille, B Larson, DS Kazi, JG Kahn, S Rosen, Thresholds for the cost-effectiveness of interventions: Alternative
134 approaches. *Bull. World Heal. Organ.* **93**, 118–124 (2015).
- 135 16. MY Bertram, et al., Disease control programme support costs: an update of WHO-CHOICE methodology, price databases
136 and quantity assumptions. *Cost Eff. Resour. Allocation* **15**, 21 (2017).
- 137 17. AJ Culyer, Cost-effectiveness thresholds in health care: a bookshelf guide to their meaning and use. *Heal. Econ. Policy*
138 *Law* **11**, 415–432 (2016).
- 139 18. B Woods, P Revill, M Sculpher, K Claxton, Country-Level Cost-Effectiveness Thresholds: Initial Estimates and the Need
140 for Further Research. *Value Heal.* **19**, 929–935 (2016).
- 141 19. J Ochalek, J Lomas, K Claxton, Estimating health opportunity costs in low-income and middle-income countries: A novel
142 approach and evidence from cross-country data. *BMJ Glob. Heal.* **3** (2018).
- 143 20. World Health Organization, *Making Choices in Health: WHO guide to cost-effectiveness analysis*. (Geneva, Switzerland),
144 (2003).
- 145 21. AA Stinnett, AD Paltiel, Estimating CE Ratios under Second-order Uncertainty. *Med. Decis. Mak.* **17**, 483–489 (1997).
- 146 22. AH Briggs, Handling uncertainty in combined endpoints. *Pharmacoeconomics* **17**, 479–500 (2000).
- 147 23. A Briggs, K Claxton, M Sculpher, *Decision Modelling for Health Economic Evaluation*. (Oxford University Press, Oxford,
148 UK), First edition, (2006).
- 149 24. B Hofmann, et al., Revealing and Acknowledging Value Judgments in Health Technology Assessment. *Int. J. Technol.*
150 *Assess. Heal. Care* **30**, 579–586 (2014).
- 151 25. M Haacker, TB Hallett, R Atun, On time horizons in health economic evaluations. *Heal. Policy Plan.* **35**, 1237–1243
152 (2020).
- 153 26. WHO Department of Control of Neglected Tropical Diseases, WHO interim guidelines for the treatment of gambiense
154 human African trypanosomiasis, (World Health Organization, Geneva, Switzerland), Technical report (2019).
- 155 27. I Tirados, et al., Tsetse Control and Gambian Sleeping Sickness; Implications for Control Strategy. *PLOS Neglected Trop.*
156 *Dis.* **9**, e0003822 (2015).
- 157 28. F Courtin, et al., Reducing human-tsetse contact significantly enhances the efficacy of sleeping sickness active screening
158 campaigns: A promising result in the context of elimination. *PLOS Neglected Trop. Dis.* **9**, 1–12 (2015).
- 159 29. MH Mahamat, et al., Adding tsetse control to medical activities contributes to decreasing transmission of sleeping sickness
160 in the Mandoul focus (Chad). *PLOS Neglected Trop. Dis.* **11**, 1–19 (2017).
- 161 30. BA van Hout, MJ Al, GS Gordon, FFH Rutten, Costs, Effects and C / E-Ratios Alongside. *Heal. Econ.* **3**, 309–319
162 (1994).
- 163 31. ZN Lothgren M, Definition, Interpretation and Calculation of Cost-effectiveness. *Heal. Econ.* **630**, 623–630 (2000).
- 164 32. TC Bailey, MW Merritt, F Tediosi, Investing in justice: Ethics, evidence, and the eradication investment cases for
165 lymphatic filariasis and onchocerciasis. *Am. J. Public Heal.* **105**, 629–636 (2015).
- 166 33. C Fitzpatrick, U Nwankwo, E Lenk, SJ de Vlas, DAP Bundy, An Investment Case for Ending Neglected Tropical Diseases

- 167 in *Major Infectious Diseases*, eds. KK Holmes, S Bertozzi, BR Bloom, P Jha. (The World Bank, Washington, DC.), 3rd
168 edition, pp. 411–431 (2017).
- 169 34. B Aylward, The Zero-Sum Goal. *Harv. Int. Rev.* **23**, 71–75 (2001).
- 170 35. MJ Keeling, BT Grenfell, Disease extinction and community size: Modeling the persistence of measles. *Science* **275**, 65–67
171 (1997).
- 172 36. BT Grenfell, ON Bjørnstad, BF Finkenstädt, Dynamics of measles epidemics: Scaling noise, determinism, and predictability
173 with the TSIR model. *Ecol. Monogr.* **72**, 185–202 (2002).
- 174 37. CJE Metcalf, K Hampson, AJ Tatem, BT Grenfell, ON Bjørnstad, Persistence in Epidemic Metapopulations: Quantifying
175 the Rescue Effects for Measles, Mumps, Rubella and Whooping Cough. *PLoS ONE* **8**, 1–7 (2013).
- 176 38. M Asaria, S Griffin, R Cookson, Distributional cost-effectiveness analysis: A tutorial. *Med. Decis. Mak.* **36**, 8–19 (2016).
- 177 39. MW Merritt, CS Sutherland, F Tediosi, Ethical Considerations for Global Health Decision-Making: Justice-Enhanced
178 Cost-Effectiveness Analysis of New Technologies for *Trypanosoma brucei gambiense*. *Public Heal. Ethics* **11**, 275–292
179 (2018).
- 180 40. S Verguet, R Laxminarayan, DT Jamison, Universal Public Finance of Tuberculosis Treatment in India: An Extended
181 Cost-Effectiveness Analysis. *Heal. Econ.* **24**, 318–332 (2015).
- 182 41. M Ekwanzala, et al., In the heart of darkness: Sleeping sickness in Zaire. *Lancet* **348**, 1427–1430 (1996).
- 183 42. D Mumba, et al., Prevalence of human African trypanosomiasis in the Democratic Republic of the Congo. *PLOS Neglected*
184 *Trop. Dis.* **5**, 1–5 (2011).
- 185 43. WHO Expert Committee on human African trypanosomiasis, Control and surveillance of human African trypanosomiasis:
186 report of a WHO expert committee, Technical report (2013).
- 187 44. JR Franco, et al., Monitoring the elimination of human African trypanosomiasis at continental and country level: Update
188 to 2018. *PLOS Neglected Trop. Dis.* **14**, e0008261 (2020).
- 189 45. RE Crump, et al., Quantifying epidemiological drivers of gambiense human African Trypanosomiasis across the Democratic
190 Republic of Congo. *PLoS Comput. Biol.* **17**, e1008532 (2021).
- 191 46. PP Simarro, et al., The Atlas of human African trypanosomiasis: a contribution to global mapping of neglected tropical
192 diseases. *Int. journal health geographics* **9**, 57 (2010).
- 193 47. CI Huang, et al., Identifying regions for enhanced control of gambiense sleeping sickness in the Democratic Republic of
194 Congo (2020).
- 195 48. M Antillon, et al., Cost-effectiveness of sleeping sickness elimination campaigns in five settings of the Democratic Republic
196 of Congo (2020).