

Surging COVID-19 in Bangladesh driven by B.1.351 variant

Eric Brum – FAO in support of the UN Interagency Support Team, Bangladesh
Senjuti Saha – Child Health Research Foundation, Bangladesh
Ayesha Sania - Columbia University, USA
Arif Mohammad Tanmoy – Child Health Research Foundation, Bangladesh
Yogesh Hooda – Child Health Research Foundation, Bangladesh
Afroza Akter Tanni – Child Health Research Foundation, Bangladesh
Sharmistha Goswami – Child Health Research Foundation, Bangladesh
Syed Muktadir Al Sium – Child Health Research Foundation, Bangladesh
Mohammad Saiful Islam Sajib – Child Health Research Foundation, Bangladesh
Roly Malaker – Child Health Research Foundation, Bangladesh
Shuborno Islam – Child Health Research Foundation, Bangladesh
Nikkon Sarker – Child Health Research Foundation, Bangladesh
Samir K Saha – Child Health Research Foundation, Bangladesh
Shayan Chowdhury – a2i, Bangladesh
Yacob Haddou -- University of Glasgow, UK
Elaine Ferguson -- University of Glasgow, UK
Mikolaj Kundegorski -- University of Glasgow, UK
Nabila Purno -- UNFPA in support of the UN Interagency Support Team, Bangladesh
Motahara Tasneem -- FAO, Bangladesh
Shams El Arifeen -- Icdrr, Bangladesh
AMS Alamgir, IEDCR -- Bangladesh
Anir Chowdhury – a2i, Bangladesh
Katie Hampson – University of Glasgow, UK

Abstract

A dramatic resurgence of COVID-19 cases and deaths in Bangladesh in March 2021 coincided with the SARS-CoV-2 B.1.351 (501Y.V2) variant of concern rapidly becoming the dominant circulating variant. Concurrently, increasing numbers of reinfections have been detected and the effective Reproductive number, R_t , has doubled, despite high levels of prior infection in Dhaka city. These data support the prediction that acquired immunity from past infection provides reduced protection against B.1.351, and highlights the major public health concern posed by immune escape variants, especially in populations where vaccination coverage remains low.

Main

In recent weeks Bangladesh has experienced a rapid and unprecedented increase in reported COVID-19 cases and deaths. Most cases in March 2021 were reported from Dhaka and Chattogram (70% and 10% of 65,000 total), where >13% of the population resides, but 56/64 districts are now showing exponential growth.¹ COVID-19 deaths in April 2021 already exceed the 2020 peak.

Sequenced viruses from Bangladesh in 2021 have been dominated by variants of concern associated with higher transmissibility and/or disease severity and potential for immune evasion.² The variant B.1.1.7 (20I/501Y.V1) that emerged in the UK was first detected in Bangladesh on 31 December 2020, whilst the variant B.1.351 (20H/501Y.V2) that emerged in South Africa was first detected on 24 January 2021.³ Four independent introductions of B.1.351 are thought to have occurred between December and early February (Supplementary information), with 159/169 (94%) of all sequences linked to an introduction in mid-December (2020-12-17, 95%CI: 2020-12-03 - 2021-01-06). By mid-April, the B.1.351 variant had been found in all eight divisions of the country, with its frequency among sequenced viruses reaching 93% (95%CI: 84-97%, 65/70 sequences)⁴ contemporaneous with the increased cases and deaths (Figure 1).

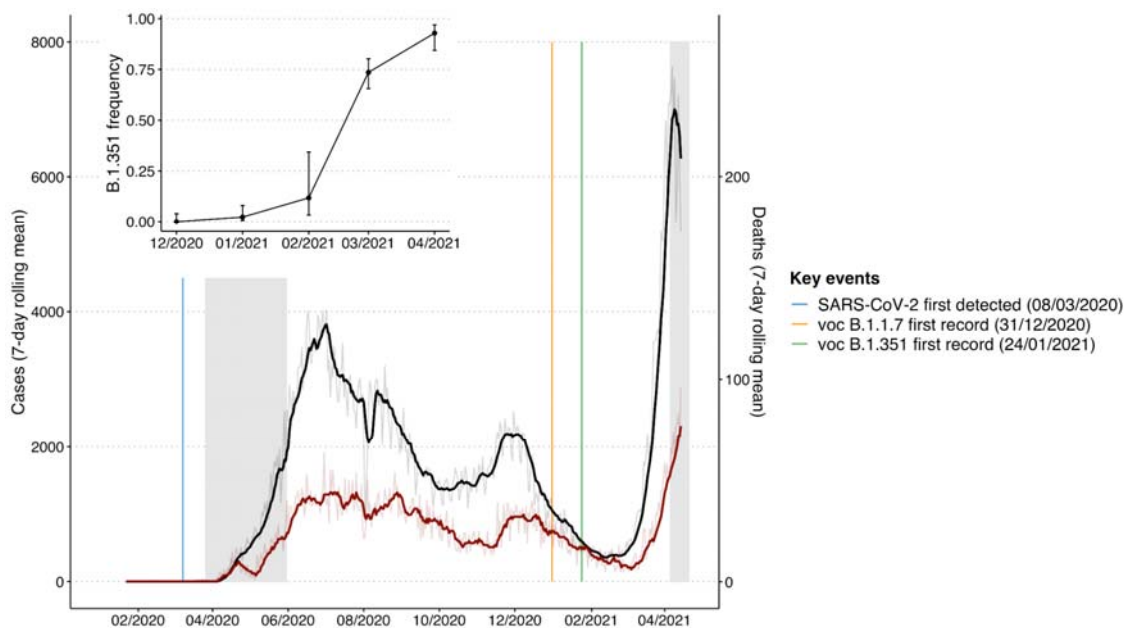


Figure 1. Time series of recorded cases and deaths in Bangladesh and the frequency of the B.1.351 variant of concern. Case numbers are presented on the left y-axis and deaths on the right. Both cases and deaths are summarised as a 7-day rolling mean, with daily raw values shown with reduced transparency. Lockdown periods are shaded in grey, and the first detection of SARS-CoV-2, and the variants of concern B.1.1.7 and B.1.351 are annotated. The inset shows the monthly frequency of B.1.351 amongst sequenced viruses from Bangladesh until mid April 2021. Data from John Hopkins University (coronavirus.jhu.edu/map.html), Nextstrain⁴, and the MIS, DGS Covid-19 dashboard¹.

The B.1.351 variant is notable for multiple substitutions in the receptor-binding area of the spike protein⁵ and is considered an escape variant from neutralizing antibody immunity

developed through natural infection.⁶ Concerningly, the B.1.351 variant is reportedly less sensitive or even insensitive to sera from convalescent individuals and recent vaccine recipients.⁷⁻⁹ These results suggest that B.1.351 will cause reinfections in individuals who have recovered from infection with previously circulating lineages. Critically, these findings may explain escalating numbers of reinfections in Bangladesh and the corresponding rise in B.1.351 detection (Figure 1), warranting genomic follow-up. Two reinfections that have been sequenced in 2021 were both due to B.1.351.¹⁰

Trials of the ChAdOx1 nCoV-19 vaccine found no efficacy against the B.1.351 variant in preventing mild-to-moderate disease, and remain inconclusive about protection from severe outcomes.¹¹ Two cases of asymptomatic infection by B.1.351 have been recorded from health workers in Bangladesh, five weeks after their first dose of the ChAdOx1 vaccine.¹⁰ Additional reports raise concerns about the degree to which vaccines may block transmission of B.1.351.^{6,8} Over six million ChAdOx1 vaccine doses have been administered in Bangladesh since early February,¹² almost all as first doses, covering just 4% of the population. Irrespective of vaccine impacts on B.1.351 transmission, these vaccinations, at current coverage levels, are expected to have only minimal impact on reducing severe disease and deaths during the current wave.

A critical question is what properties of B.1.351, if any, underlie Bangladesh's resurgence.¹³ Several lines of evidence suggest that a large proportion of the Dhaka population were infected by COVID-19 in 2020. Bangladesh's 513,510 recorded cases in 2020 underestimates total cases, as testing was initially restricted to the national laboratory, and like most countries, focused on symptomatic testing. Additionally, surveys in Dhaka city from April-June 2020 (prior to the peak) found point prevalence of almost 10% and seroprevalence of 45%, reaching 74% in slums.¹⁴ For reasons that remain unclear, case fatality rates in 2020 were fortuitously low, but healthcare capacity was still stretched at the peak. Limited data are currently available on clinical characteristics of B.1.351. The age patterns of deaths and hospitalizations in 2021 need comparing to 2020 to assess whether the variant causes more or less severe disease, particularly in lower age groups.

A combination of non-pharmaceutical interventions (NPIs) and naturally-acquired immunity likely contributed to prior declines in cases (Figure 1). The basic reproduction number (R_0) for SARS-CoV-2 in Bangladesh was estimated at 3.4 prior to lockdown measures which were initiated 18 days after the country's first confirmed case.¹⁵ In that period masks were mandated¹⁶ and community-level NPIs began. By early 2021 overall test positivity reached a low of <4% (27 January 2021, Figure 2C).¹ However, by late January 2021 mobility levels within the general population were higher than pre-pandemic levels¹⁷ and a decrease in mask-wearing was observed coinciding with vaccination announcements.

The reproduction number, R_t , in Bangladesh remained near 1 throughout 2020 but rose towards 2 in March 2021 (Supplementary Information). Although relaxation of NPIs may have facilitated this growth, the introduction and rapid growth of B.1.351 raises the worrying possibility that immune escape has played a role. Resurgence of previously dominant variants is not yet evident, presumably limited by naturally acquired herd immunity of around 65-75%. In contrast, we found support for lower protection against B.1.351 (~25%), in line with laboratory studies and an estimated R_0 of 3.5 for the variant¹⁵, which would explain the

growth in R_t . However, the precision and range of our R_0 estimate for B.1.351 (2.3 to 6.5) is subject to uncertainties in the extent of prior infections and degree of protection conferred.

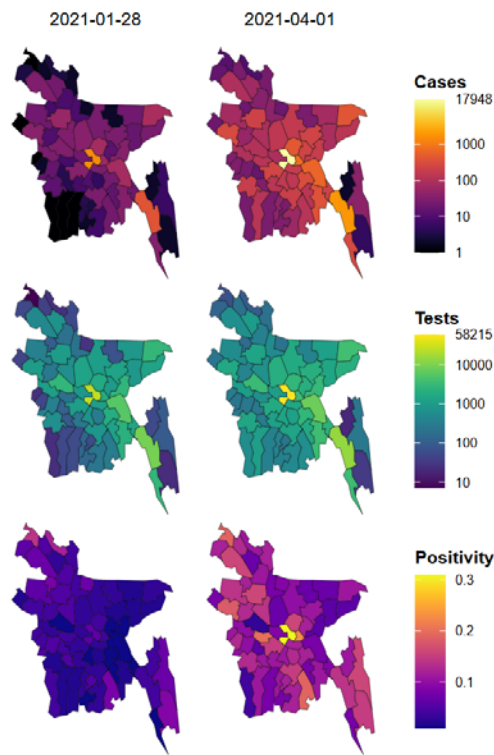


Figure 2. The spatial distribution of weekly cases, testing and test positivity across Bangladesh districts when B.1.351 was first detected on 27 January and by 1 April 2021. Cases and test numbers represent the cumulative count for that given week. Positivity was calculated as the ratio between the weekly cases and tests.

In the absence of widespread immunity from mass vaccination and with the next tranche of vaccines possibly delayed,¹⁸ urgent measures are needed to minimize the worst impacts of the current surge. The Bangladesh government pushed for the second lockdown to be more strictly enforced from 14 April 2021 offering a window for strengthening the response.¹⁹ To limit transmission, national and social media communications amplified by community-level advocacy for staying home and wearing masks should be linked with mass mask distribution beginning in the most densely populated areas. Oxygen supplies need reassessing and triage practices need review to ensure prioritization of hospital resources that are already approaching capacity.¹ Personnel, transport, and procurement need reinforcement to secure diagnostic and surveillance capacity. Daily tests saturated at around 30,000/day at the start of April when test positivity exceeded 30% (Figure 2), and sample-to-reporting delays were increasing with test volumes.¹ Vaccine import needs expediting.

Genomic and epidemiological evidence from Bangladesh highlights the threat from immune escape in populations where vaccination coverage remains negligible and serves as forewarning for other densely populated countries. Vaccines will need updating for the B.1.351 variant and must be distributed equitably. We emphasize the importance of genomic

surveillance and timely sharing of information for effective response to the changing epidemiological situation around the world.

Methods

We sourced administrative boundaries from the Bangladesh Bureau of Statistics through the HDX-OCHA data portal²⁰ and data on COVID-19 cases, deaths and vaccinations using the *coronavirus*²¹ and *tidycovid19*²² packages in R²³. We assessed the number and timing of introductions of the B.1.351 variant into Bangladesh using the phylogeny from the Bangladesh-build³ on Nextstrain²⁴ and we used the SARS-CoV-2 metadata to calculate the frequency and distribution of variants over time. We manipulated and plotted these data using the *tidyverse*²⁵ and *sf*²⁶ packages.

We estimated the effective reproductive number, R_t , over the course of the epidemic and for the B.1.351 variant specifically, using the *EpiEstim* package²⁷. For the B.1.351 variant we assessed R_t by fitting to the variant's daily interpolated frequency from the estimated date (and 95% confidence intervals) of first introduction. We also calibrated an SEIR model to the daily confirmed COVID-19 deaths in Bangladesh to estimate R_0 . We tuned the model to data prior to lockdown in 2020, and again for B.1.351, to cases in January 2021 and examined the best fit across a range of levels of prior immunity.¹⁵ Full details including all data and code are available from our Github repository: https://github.com/boydorr/BGD_Covid-19.

References

- 1 MIS, DGHS. Coronavirus COVID-19 Dashboard, 2020. 2021. <http://103.247.238.92/webportal/pages/covid19.php> (accessed April 12, 2021).
- 2 Rambaut A, Holmes EC, O'Toole A, *et al.* A dynamic nomenclature proposal for SARS-CoV-2 lineages to assist genomic epidemiology. *Nat Microbiol* 2020; **5**: 1403–7.
- 3 Saha S, Tanmoy AM, Al Sium SM, *et al.* Detection of the B.1.1.7 and B.1.351 SARS-CoV-2 variants in Bangladesh. 2021; published online March 26. <https://virological.org/t/detection-of-the-b-1-1-7-and-b-1-351-sars-cov-2-variants-in-bangladesh/668> (accessed April 6, 2021).
- 4 Child Health Research Foundation. Genomic epidemiology of novel coronavirus - Bangladesh-focused subsampling. https://nextstrain.org/community/CHRF-Genomics/ncovBangladesh@main?c=clade_membership&f_country=Bangladesh (accessed April 6, 2021).
- 5 Tegally H, Wilkinson E, Giovanetti M, *et al.* Emergence and rapid spread of a new severe acute respiratory syndrome-related coronavirus 2 (SARS-CoV-2) lineage with multiple spike mutations in South Africa. *medRxiv* 2020; : 2020.12.21.20248640.
- 6 Wibmer CK, Ayres F, Hermanus T, *et al.* SARS-CoV-2 501Y.V2 escapes neutralization by South African COVID-19 donor plasma. *Nat Med* 2021; : 1–4.
- 7 Planas D, Bruel T, Grzelak L, *et al.* Sensitivity of infectious SARS-CoV-2 B.1.1.7 and B.1.351 variants to neutralizing antibodies. *Nat Med* 2021; : 1–8.
- 8 Cele S, Gazy I, Jackson L, *et al.* Escape of SARS-CoV-2 501Y.V2 from neutralization by convalescent plasma. *Nature* 2021; : 1–9.
- 9 Zhou D, Dejnirattisai W, Supasa P, *et al.* Evidence of escape of SARS-CoV-2 variant B.1.351 from natural and vaccine-induced sera. *Cell* 2021; published online Feb 23. DOI:10.1016/j.cell.2021.02.037.
- 10 Saha S, Tanmoy AM, Hooda Y, *et al.* COVID-19 rise in Bangladesh correlates with increasing detection of B.1.351 variant. *BMJ Glob Health* in press.
- 11 Madhi SA, Baillie V, Cutland CL, *et al.* Efficacy of the ChAdOx1 nCoV-19 Covid-19 Vaccine against the B.1.351 Variant. *N Engl J Med* 2021; published online March 16. DOI:10.1056/NEJMoa2102214.
- 12 OurWorldInData.org. Daily COVID-19 vaccine doses administered. Dly. COVID-19

- Vaccine Doses Adm. <https://ourworldindata.org/grapher/daily-covid-19-vaccination-doses?tab=chart&country=~BGD> (accessed April 12, 2021).
- 13 Pearson CA, Russell TW, Davies NG, *et al.* Estimates of severity and transmissibility of novel SARS-CoV-2 variant 501Y.V2 in South Africa. CMMID Repos. 2021; published online Jan 11. <https://cmmid.github.io/topics/covid19/sa-novel-variant.html> (accessed April 24, 2021).
 - 14 Icdrr'b. The IEDCR and partners share insights on the prevalence, seroprevalence and genomic epidemiology of COVID-19 in Dhaka city. 2020; published online Oct 12. <https://www.icddr.org/quick-links/press-releases?id=97&task=view> (accessed April 10, 2021).
 - 15 Ferguson EA, Brum E, Chowdhury A, *et al.* Modelling to inform the COVID-19 response in Bangladesh. *medRxiv* 2021; published online April 22.
 - 16 Elahi T. Conditional extension of overall activities / movement to prevent the spread of coronavirus disease COVID-19 (translated from Bangla). Peoples Republic of Bangladesh, Cabinet Division, Field Administration Coordination Branch, 2020 www.cabinet.gov.bd.
 - 17 Google. COVID-19 Community Mobility Report Bangladesh 2 April 2021. 2021 https://www.gstatic.com/covid19/mobility/2021-04-02_BD_Mobility_Report_en-GB.pdf.
 - 18 WHO. COVAX updates participants on delivery delays for vaccines from Serum Institute of India (SII) and AstraZeneca. COVAX Updat. Particip. Deliv. Delays Vaccines Serum Inst. India SII AstraZeneca. 2021; published online March 25. [https://www.who.int/news/item/25-03-2021-covax-updates-participants-on-delivery-delays-for-vaccines-from-serum-institute-of-india-\(sii\)-and-astrazeneca](https://www.who.int/news/item/25-03-2021-covax-updates-participants-on-delivery-delays-for-vaccines-from-serum-institute-of-india-(sii)-and-astrazeneca) (accessed April 12, 2021).
 - 19 Editor. Bangladesh to go into week-long hard lockdown from April 14. Dhaka Trib. 2021; published online April 9. <https://www.dhakatribune.com/health/coronavirus/2021/04/09/government-considering-week-long-full-lockdown-from-april-14>.

Supplementary References

- 20 The Humanitarian Data Exchange. <https://data.humdata.org/dataset/administrative-boundaries-of-bangladesh-as-of-2015>. Bangladesh - Subnational Adm. Boundaries. 2020; published online Nov 17. <https://data.humdata.org/dataset/administrative-boundaries-of-bangladesh-as-of-2015> (accessed April 10, 2021).
- 21 Krispin R, Byrnes J. coronavirus R package. 2021 <https://github.com/RamiKrispin/coronavirus/>.
- 22 Gassen J. tidyCovid19. 2020 <https://github.com/joachim-gassen/tidyCovid19>.
- 23 R Core Team. R: A language and environment for statistical computing. Vienna, Austria: R Foundation for Statistical Computing, 2020 <https://www.R-project.org/>.
- 24 Hadfield J, Megill C, Bell SM, *et al.* Nextstrain: real-time tracking of pathogen evolution. *Bioinformatics* 2018; **34**: 4121–3.
- 25 Wickham H, Averick M, Bryan J, *et al.* Welcome to the Tidyverse. *J Open Source Softw* 2019; **4**: 1686.
- 26 Pebesma E. Simple Features for R: Standardized Support for Spatial Vector Data. *R J* 2018; **10**: 439–46.
- 27 Cori A, Ferguson NM, Fraser C, Cauchemez S. A New Framework and Software to Estimate Time-Varying Reproduction Numbers During Epidemics. *Am J Epidemiol* 2013; **178**: 1505–12.

Authors: UN Interagency Support Team (Eric Brum - FAO, Nabila Purno - UNFPA), FAO (Motahara Tasneem); Child Health Research Foundation (Senjuti Saha, Arif Mohammad Tanmoy, Yogesh Hooda, Afroza Akter Tanni, Sharmistha Goswami, Syed Muktadir Al Sium, Mohammad Saiful Islam Sajib, Roly Malaker, Shuborno Islam, Nikkon Sarker, Samir K Saha); icddr,b (Shams El Arifeen), Columbia University (Ayesha Sania), a2i (Anir Chowdhury, Shayan Chowdhury), IEDCR (ASM Alamgir), UoG Covid LMICs SIG (Elaine A Ferguson, Yacob Haddou, Mikolaj Kundegorski, Katie Hampson)

Funding: The Bill and Melinda Gates Foundation funded work by FAO (INV-022851) and CHRF (INV-016932, INV-023821) and UoG reports funding from Wellcome (095787/Z/11/Z). The authors declare no competing interests.

Acknowledgements: The authors thank the Directorate General of Health Services (DGHS), Bangladesh, and the Institute of Epidemiology Disease Control and Research (IEDCR) for ongoing SAR-CoV-2 surveillance and prevention measures. We are grateful to the University of Glasgow LMICs COVID-19 working group (members detailed in github.com/boydorr/BGD_Covid-19) and Jessica Metcalf for valuable feedback and discussion.

Author contributions: EB, NP, AS, SEA, KH - writing; SS, AMT, MT, AAT, SG, MSIS, SI, NS, MK, SEA, SC - data collection; EAF, KH, MK, YH - analysis; YH, YH, KH - visualization; SS, AS, SEA, SKS, AC, SC, EB, MT, ASMA - Investigation; EB, KH, EAF, AS, SEA, SS, AMT, YH, AAT, SG, SMAS, MSIS, RM, SI, SKS, SC, AC - Interpretation.

Supplementary Information

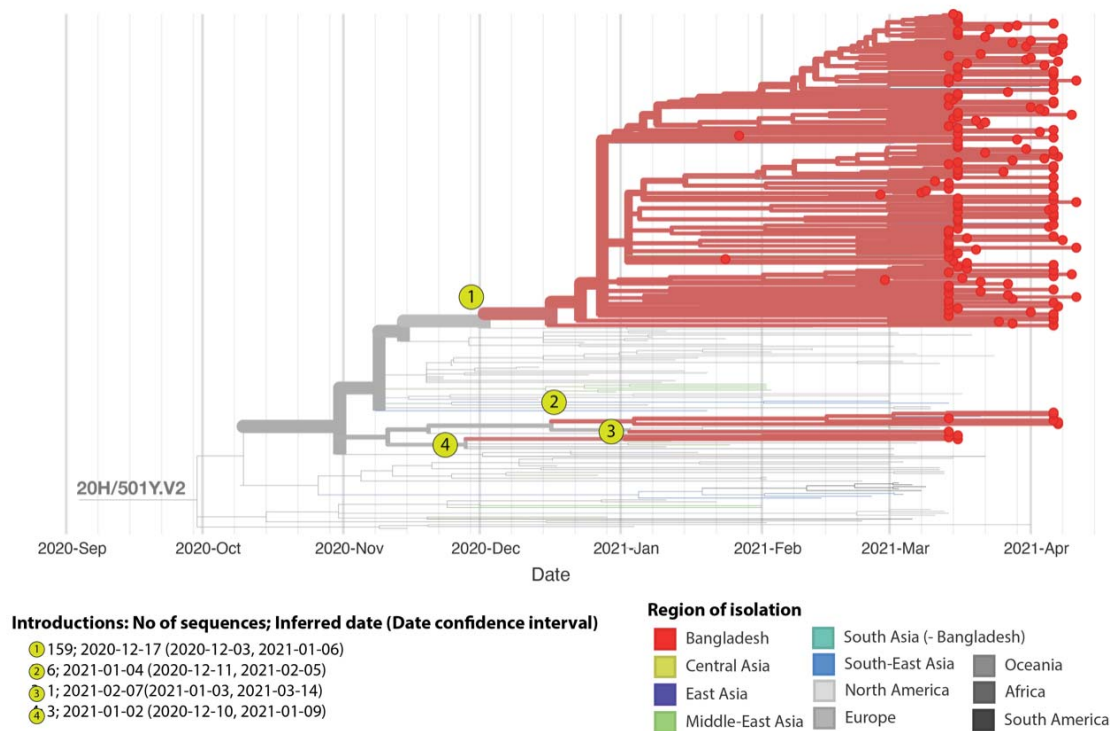


Figure S1. Introductions of B.1.351 into Bangladesh. The phylogeny depicts 272 isolates of the B.1.351 variant including 169 sequenced in Bangladesh till 11 April 2021. Edges are colored according to geographical region of isolation. Isolates from Bangladesh are highlighted in red. Potential introductions are indicated, together with the number of sequences from each introduction, the inferred date of introduction and the confidence intervals for the introduction date. The major and minor grid lines correspond to months and weeks respectively.

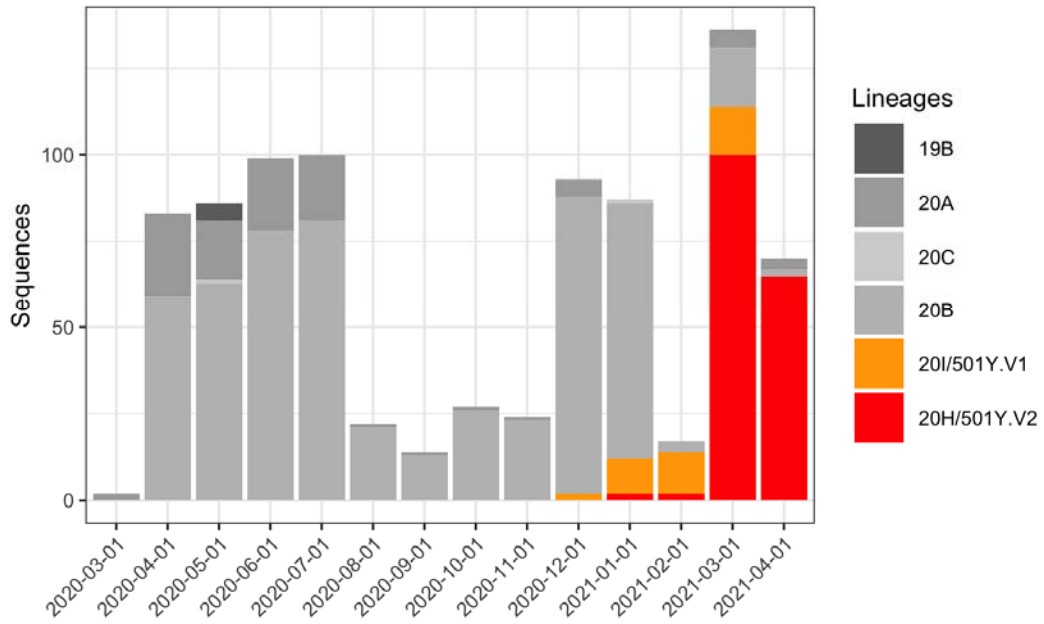


Figure S2. Monthly frequency of variants of concern amongst sequenced cases in Bangladesh. B.1.1.7 and B.1.351 are shown in orange and red respectively.

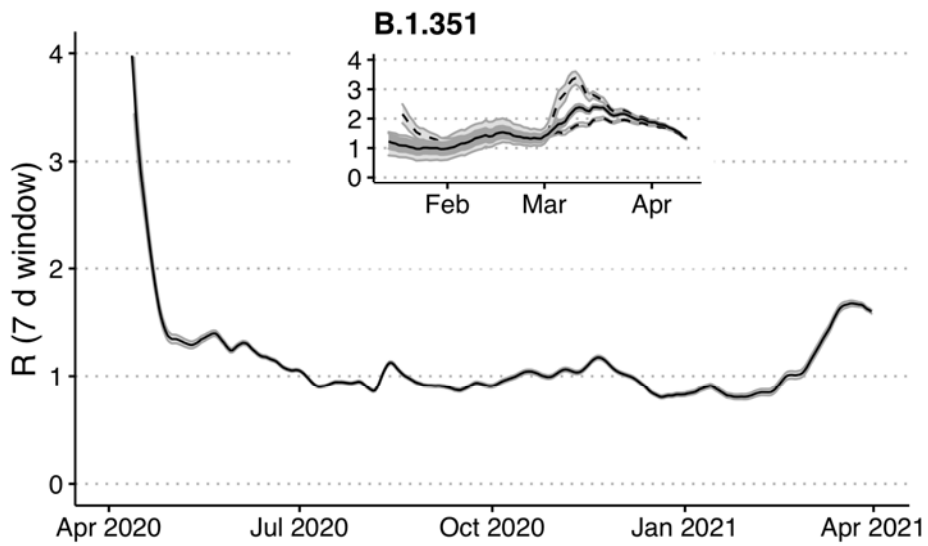


Figure S3. The effective reproductive number over the course of the epidemic and for the B.1.351 variant. 95% confidence intervals are shaded grey. R_t is estimated for the B.1.351 variant by interpolating from the estimated introduction dates and variant frequency as a proportion of the sequenced viruses. R_t estimates from the variant frequency upper and lower confidence intervals are shown by dashed lines.