

PROTOCOL TITLE:

ReCOVer study: A Cross-sectional Observational Study to Identify the *Rehabilitation* Need in Post-discharge *COVID-19* Survivors

Authors:

Dr Raktim Swarnakar

Junior Resident (Academic),
Department of Physical Medicine and Rehabilitation (PM&R),
AIIMS, New Delhi 110029

Dr S. L. Yadav

Professor,
Department of Physical Medicine and Rehabilitation (PM&R),
AIIMS, New Delhi 110029

Dr Srikumar V

Associate Professor,
Department of Physical Medicine and Rehabilitation (PM&R),
AIIMS, New Delhi 110029

Dr Kapil Dev Soni

Additional Professor,
Department of Critical and Intensive Care,
AIIMS, New Delhi 110029

Dr Richa Aggrawal,

Additional Professor,
Department of Critical and Intensive Care,
AIIMS, New Delhi 110029

Dr Anjan Trikha

Professor,
Department of Anaesthesiology,
AIIMS, New Delhi 110029

Abstract:

Introduction: With the increasing number of Coronavirus disease-2019 (COVID-19) cases there is simultaneous increase in recovered cases too. There are many post-covid complications where need for rehabilitation intervention is very conspicuous especially pulmonary, neurological complications. Hence data are of utmost importance to find out those rehabilitation needs among post-covid survivors.

Methods and analysis: ReCOVer (*Rehabilitation Need in Post-discharge COVID-19 Survivors*), a cross-sectional observational study protocol has been planned to find out rehab-need by assessing International Classification of Functioning, Disability and Health (ICF) core data set, COVID-19 Yorkshire Rehab Screen (C19-YRS) tool, The Post-COVID-19 Functional Status (PCFS) scale, barriers to functional independence and rehab services (affordability & availability). Post-discharge (minimum 1 weeks) Covid patients (required hospitalisation) will be included in the study. Study will be conducted through Telerehabilitation facility. Study will conform to the Strengthening the Reporting of Observational Studies in Epidemiology (STROBE) guidelines.

Ethics and dissemination: Study received ethical approval from Institute Ethics Committee, All India Institute of Medical Sciences (AIIMS), New Delhi, India. Findings will be disseminated at scientific conferences/meetings, peer-reviewed journals, and to relevant stakeholders including the ministry of health (if required).

Main Text:

INTRODUCTION

Worldwide coronavirus disease (COVID-19) has affected 14 million and more than 8 million people have recovered from this disease.¹ In India, confirmed cases crossed 11 lakhs and recovered cases crossed 7 lakhs.² In the view of multiple post-COVID complications especially neurological and cardiopulmonary etc, rehabilitation need is very conspicuous. But currently evidence from literature and studies are lacking on rehabilitation of COVID-19 population. There is no study addressing rehab need in different subgroups of COVID-19 especially among different clinical severity of COVID-19 after discharge.

At this current scenario we propose to assess the need of rehabilitation in different clinical severity of COVID-19 patients after discharge from hospitalisation. This would form a basis for rehab recommendations for these patients and also it would help to address the knowledge gaps and to gather observations for future research.

REVIEW OF LITERATURE

COVID-19, started in Wuhan, China in December, 2019, is caused by Severe acute respiratory syndrome coronavirus 2 (SARS-CoV-2). Then it spread to rest of the world causing a public health emergency. SARS-CoV-2 is a positive sense and single stranded RNA virus. Bat is the probable reservoir.

Incubation period: 2- 14 days.

Mode of transmission: Respiratory droplets.

Clinical features: Fever, dry cough, fatigue, shortness of breath, sore throat are the common symptoms.

COVID-19 confirmed case definition (WHO)³: A person with laboratory confirmation of COVID-19 infection, irrespective of clinical signs and symptoms.

Clinical severity: According to WHO, it is classified as mild, moderate (pneumonia), severe (severe pneumonia) and critical stages (acute respiratory distress syndrome, sepsis, septic shock).

Pathophysiology: SARS-CoV-2 enters human body via ACE2 receptor and primary this virus causes diffuse alveolar damage. Excessive immune reaction to the virus, causing cytokine storm, is mainly responsible for the clinical severity of COVID-19.

Investigation: Confirmation is generally done by Real-time polymerase chain reaction in samples collected from upper and lower respiratory tract. Lymphopenia is a cardinal feature. Xray shows bilateral infiltrates, CT scan shows ground glass appearance.

Treatment:⁴

Mild: Antipyretics

Moderate to severe: Supplemental oxygen therapy immediately to patients with SARI and respiratory distress, hypoxaemia or shock and target SpO₂ > 94%. Empiric antimicrobials to

treat all likely pathogens causing SARI and sepsis as soon as possible, within 1 hour of initial assessment for patients with sepsis.

ARDS: Recognize severe hypoxemic respiratory failure when a patient with respiratory distress is failing to respond to standard oxygen therapy and prepare to provide advanced oxygen/ventilatory support. Implement mechanical ventilation using lower tidal volumes (4–8 mL/kg predicted body weight, PBW) and lower inspiratory pressures (plateau pressure < 30 cmH₂O). In adult patients with severe ARDS, prone ventilation for 12–16 hours per day is recommended.

Septic shock: Recognize septic shock in adults when infection is suspected or confirmed AND vasopressors are needed to maintain mean arterial pressure (MAP) \geq 65 mmHg AND lactate is \geq 2 mmol/L, in absence of hypovolemia. Recognize septic shock in children with any hypotension (systolic blood pressure [SBP] < 5th centile or > 2 SD below normal for age) or two or more of the following: altered mental state; bradycardia or tachycardia (HR < 90 bpm or > 160 bpm in infants and HR < 70 bpm or > 150 bpm in children); prolonged capillary refill (> 2 sec) or feeble pulses; tachypnoea; mottled or cold skin or petechial or purpuric rash; increased lactate; oliguria; hyperthermia or hypothermia.

Post-COVID-19 Complications: The most common clinical features were fever (99%), fatigue (70%), dry cough (59%), anorexia (40%), myalgias (40%), dyspnea (31%), and sputum production (27%).⁵

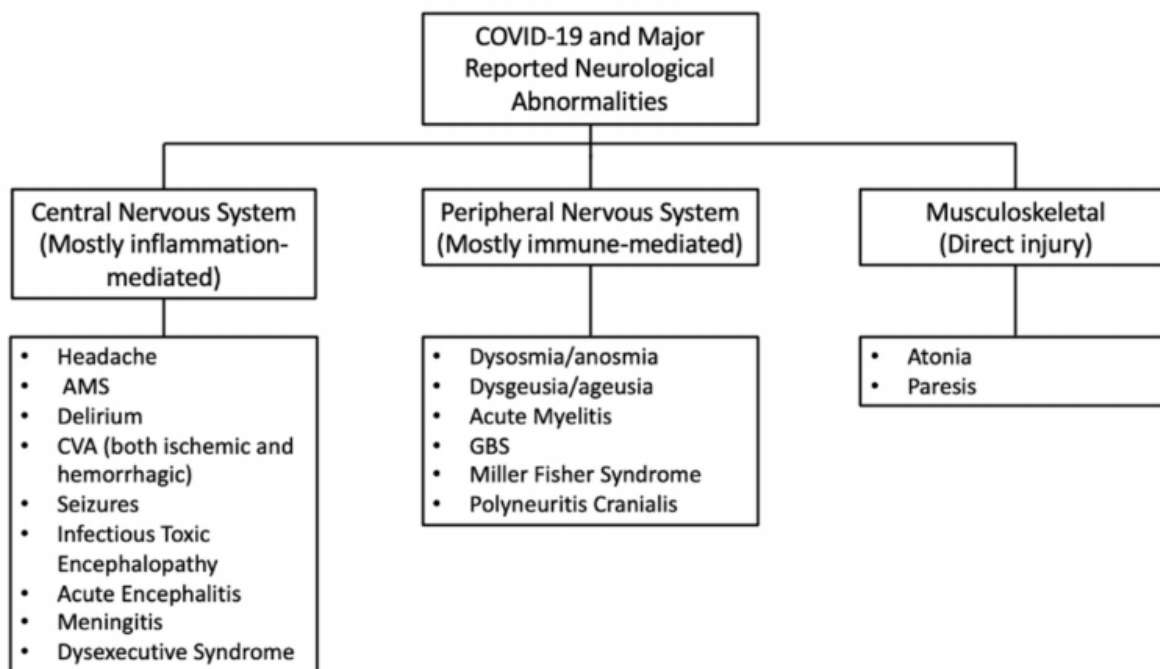
Extra-respiratory manifestations of patients with COVID-19⁶

- **Cardiac:** Acute cardiac injury (8–12%), heart failure (23–52%), arrhythmia (8.9–16.7%), shock, acute myocarditis, chest tightness.
- **Gastrointestinal:** Anorexia (26.8%), diarrhoea (12.5%), nausea/vomiting (10.2%), abdominal pain/discomfort (9.2%).
- **Hepatic:** Abnormal aspartate aminotransferase or alanine aminotransferase values (16.1–53.1%).
- **Kidney:** Acute kidney injury (overall 0.5%; 2.9–23% in severe cases).
- **Neurological:** Dizziness (16.8%), headache (13.1%), skeletal muscle injury (10.7%), impaired consciousness (7.5%), acute cerebrovascular disease (2.8%), ataxia (0.5%), seizures (0.5%), meningoencephalitis, Guillain–Barré syndrome.
- **Olfactory and gustatory:** Hyposmia (5.1–20.4%), anosmia (79.6%), dysgeusia (8.5%), ageusia (1.7%).
- **Ocular:** Acute conjunctivitis (31.6%).
- **Cutaneous:** Erythematous rash (15.9%), hives rash (3.4%), vesicles (1.1%), acro-ischaemia, transient unilateral livedo reticularis.
- **Haematological:** Lymphopenia (56.5%), thrombocytopenia (16.4–32.3%), coagulation disorders, thrombotic events, antiphospholipid antibody.

It has been suggested that viral invasion of the central nervous system by SARS-CoV2 is possible by the synapse-connected route observed with other coronaviruses such as SARS-CoV and can lead to several neurological complications including ataxia, seizures, neuralgia, unconsciousness, acute cerebrovascular disease and encephalopathy.^{7, 8}

The most common peripheral manifestation is hyposmia and Hyposmia (5.1–20.4%), anosmia (79.6%), dysgeusia (8.5%), ageusia (1.7%).⁹

Neuro-muscular complication as listed below:¹⁰



Helms et al.¹¹ reported neurological complications in an observational case series of 58 patients admitted to the ICU for ARDS, secondary to COVID-19 in Strasbourg, France, between 3 March 2020 and 3 April 2020. Neurological findings were seen in 14% of patients at admission and 69% of cases were seen when they were weaned off sedation and paralytics. Most frequently observed symptoms were confusion (65%), agitation (69%), upper motor neuron syndrome signs like hyperreflexia with clonus and positive Babinski's sign (69%) during the ICU stay, and a dysexecutive syndrome (33%) after discharge. MRI of the brain in patients who developed unexplained encephalopathic features revealed leptomenigeal enhancement (62%), perfusion abnormalities on MRI (100%), and ischemic CVA (23%). Only one out of the eight patients who underwent electroencephalogram (EEG) showed findings consistent with encephalopathy.

87.4% recovered COVID-19 patients reported persistence of at least 1 symptom, particularly fatigue (53.1%), dyspnea (43.4%), joint pain, (27.3%) and chest pain (21.7%).¹²

Rehabilitation (current available evidences on COVID-19):

In India till now no studies have focussed rehabilitation in Covid. Currently rehabilitation is focussing on pulmonary rehabilitation in COVID-19 during hospital or ICU stay. Recently one consensus has been developed on post-Covid rehabilitation in UK,¹³ but in different settings it could be variable. For the time being, rehab guidelines for COPD has been recommended for rehabilitation of Covid patients. Most of the studies has emphasized pulmonary component but are lacking a comprehensive rehabilitation program. There is one study is going regarding telerehabilitation in Covid patient, but studies on rehab or even tele

rehab in post-Covid population are lacking. One study¹⁴ has addressed 32 post-acute Covid patient with early rehabilitation in Italy.

Outcome measure:

C19-YRS tool:¹⁵ It is recently developed, free but not validated. It is made for rehab need assessment in post Covid-19 patients. It addresses all domain of WHO ICF.

PCFS scale:¹⁶ A recently developed scale, it covers the full spectrum of functional outcomes, and focuses on both limitations in usual duties/activities and changes in lifestyle in six scale grades. It is free to use, not validated.

ICF core data set:¹⁷ For COVID-19 there is no separate ICF data set. Hence, in our study we would include all data in accordance with ICF rehabilitation data set including subcategories of musculoskeletal, neurological, cardiopulmonary condition according to individual patient's condition as mentioned in ICF data set.

RATIONALE OF STUDY

Worldwide more than 8 lakhs population have been recovered from Covid-19. Post-Covid neurological, cardiovascular sequelae have been identified, moreover it affects multiple system in our body. In this context rehabilitation would be an essential component in those patients for comprehensive management.

Hence, we propose this study to identify rehabilitation needs in these population for gathering information for further studies like type of rehabilitation intervention needed, to whom it would be needed, how can it be offered, its efficacy, and feasibility etc.

AIM

To assess the rehabilitation-need in post-discharge COVID-19 survivors.

OBJECTIVES

To determine the rehabilitation-need in post-discharge COVID-19 survivors by assessing:

Primary objective: ICF core data set.

Secondary objectives:

1. COVID-19 Yorkshire Rehab Screen (C19-YRS) tool.
2. The Post-COVID-19 Functional Status (PCFS) scale.
3. Barriers to functional independence and rehab services (affordability & availability).

MATERIALS & METHODS

- **Study setting:** The study will be conducted in the department of Physical Medicine and Rehabilitation (PM&R), AIIMS, New Delhi.
- **Study duration:** The study shall commence after approval from the institutional review board and the ethical committee and will be continued for a period of one month.
- **Type of study:** A cross-sectional observational study. Study will conform to the Strengthening the Reporting of Observational Studies in Epidemiology (STROBE) guidelines.

- **Study subjects:** Post-discharge COVID-19 positive patients.
- **Selection of cases:** As this is a sub-study of “*Post discharge outcomes of COVID-19 patients following admission to Intensive care unit: A prospective cohort study*” (**Ref. No IEC-291/17.04.2020, RP-11/2020**. Code No. **A-COVID-41**). The selection of the participants will be from the cohort of above mentioned study.
- **Follow-up:** No follow-up.
- **Sample size:** During COVID-19 pandemic, there is no study addressing rehabilitation need among post-discharge COVID-19 population. However, using 7 lakh recovered Covid-19 population in India till date, 5% margin of error, 95% confidence interval and 50% response distribution, sample size calculated was 384. We calculated our descriptive study sample size using CDC Epi Info™ 7.2.4.0 (StatCalc) software.
- **Inclusion criteria:**
 1. Age: any age group.
 2. Either gender.
 3. Post-discharge (minimum 1 week) of any confirmed COVID-19 cases those who required hospitalisation (required oxygenation, ICU monitoring or management, etc. for COVID-19).
- **Exclusion criteria:**
 1. No access to or unavailability of minimum phone-calling facility.
 2. Not willing to participate in the study.
- **Methodology:**
 1. **Patient selection:** From database according to the inclusion criteria.
 2. **Recruitment and Contacting the participants:** by telemedicine (telephonic calls).
 3. **Explanation and reassurance:** Patients will be explained about the whole procedure of the study.
 4. **Consent:** Consent will be taken according to the Telemedicine Practice Guidelines, India (2020).¹⁸
 5. **Participant’s details and history:** All demographic and clinical characteristics (age, sex, residence, source of contact of COVID-19 or contact tracing, duration of symptoms, durations of hospital admission, duration of ICU stay if any, history of diabetes, hypertension, kidney disease, cardiac disease or any other disease etc.), laboratory findings and medication history all will be collected from the ongoing cohort study (**Ref. No IEC-291/17.04.2020, RP-11/2020**. Code No. **A-COVID-41**).
 6. **Addressing current clinical complaints (if any).**
 7. **Data collection and assessment of C19-YRS tool and PCFS scale:** It will be done at single time-point (during telemedicine consultation).
 8. **Listing of barriers to functional independence, rehab services, hygiene practices:** For each barrier, its mechanism, coping strategies will be documented. Based on these policy implications would be addressed.
 9. **Information/education need:** Source of information or awareness regarding COVID-19, and in Yes/No format, knowledge regarding social distancing, hand hygiene, mask use will be documented.
 10. **Addressing support need:** Time given per day, income, and source of income of caregiver will be documented.

11. Listing of Physical activity participants doing (if any): Types, intensity, duration of exercises/physical activity done per day.

- **Interventions:** Not applicable.

STATISTICAL ANALYSIS

- Data will be entered in Microsoft EXCEL spreadsheet.
- Data will presented as mean \pm SD/median (range, min, max) and frequency percentage.
- Stata 14.1 will be used in analysis.
- P value < 0.05 will be taken as statistically significant.

REFERENCES

1. World Health Organization Website. 2020. <https://www.who.int/emergencies/diseases/novel-coronavirus-2019>. Accessed 21 July 2020.
2. Ministry of Health and Family Welfare, Government of India Website. 2020. <https://www.mohfw.gov.in/>. Accessed 21 July 2020.
3. World Health Organization Website. 2020. Global Surveillance for human infection with coronavirus disease (COVID-19). [https://www.who.int/publications-detail-redirect/global-surveillance-for-human-infection-with-novel-coronavirus-\(2019-ncov\)](https://www.who.int/publications-detail-redirect/global-surveillance-for-human-infection-with-novel-coronavirus-(2019-ncov)). Accessed 21 July 2020.
4. World Health Organization Website. 2020. Clinical management of COVID-19. <https://www.who.int/publications-detail-redirect/clinical-management-of-covid-19>. Accessed 21 July 2020.
5. Wang D, Hu B, Hu C, et al. Clinical characteristics of 138 hospitalized patients with 2019 novel coronavirus-infected pneumonia in Wuhan, China [published online ahead of print, 2020 Feb 7]. *JAMA* 2020:e201585. <https://doi.org/10.1001/jama.2020.1585>.
6. Lai CC, Ko WC, Lee PI, Jean SS, Hsueh PR. Extra-respiratory manifestations of COVID-19 [published online ahead of print, 2020 May 22]. *Int J Antimicrob Agents*. 2020;106024. doi:10.1016/j.ijantimicag.2020.106024.
7. Beeching N, F T, Fowler R. Coronavirus disease 2019 (COVID-19). *BMJ Best Practice* 2020. <https://bestpractice.bmj.com/topics/en-gb/3000168/emergingtxs>. Accessed April 11, 2020.
8. Li YC, Bai WZ, Hashikawa T. The neuroinvasive potential of SARS-CoV2 may play a role in the respiratory failure of COVID-19 patients [published online ahead of print, 2020 Feb 27]. *J Med Virol* 2020. <https://doi.org/10.1002/jmv.25728>.
9. Xu XW, Wu XX, Jiang XG, Xu KJ, Ying LJ, Ma CL, et al. Clinical findings in a group of patients infected with the 2019 novel coronavirus (SARS-CoV2) outside of Wuhan, China: retrospective case series. *BMJ* 2020;368:m606. doi:10.1136/bmj.m606.
10. Sheraton, M., Deo, N., Kashyap, R., & Surani, S. (2020). A Review of Neurological Complications of COVID-19. *Cureus*, 12(5), e8192. <https://doi.org/10.7759/cureus.8192>.

11. Helms J, Kremer S, Merdji H, et al. Neurologic Features in Severe SARS-CoV-2 Infection. *N Engl J Med*. 2020;382(23):2268-2270. doi:10.1056/NEJMc2008597.
12. Carfi A, Bernabei R, Landi F, for the Gemelli Against COVID-19 Post-Acute Care Study Group. Persistent Symptoms in Patients After Acute COVID-19. *JAMA*. Published online July 09, 2020. doi:10.1001/jama.2020.12603.
13. Barker-Davies RM, O’Sullivan O, Senaratne KPP, Baker P, Cranley M, Dharm-Datta S, et al. The Stanford Hall consensus statement for post-COVID-19 rehabilitation. *Br J Sports Med*. 2020 May 31. <https://bjsm.bmj.com/content/early/2020/05/31/bjsports-2020-102596>.
14. Kiekens C, Boldrini P, Andreoli A, Avesani R, Gamna F, Grandi M, et al. Rehabilitation and respiratory management in the acute and early post-acute phase. “Instant paper from the field” on rehabilitation answers to the COVID-19 emergency. *Eur J Phys Rehabil Med*. 2020 Jun;56(3):323–6.
15. Assessing long-term rehabilitation needs in COVID-19 survivors using a telephone screening tool (C19-YRS tool) - ACNR | Paper & Online Neurology Journal ACNR | Paper & Online Neurology Journal [Internet]. [cited 2020 Jul 21]. Available from: <https://www.acnr.co.uk/2020/06/c19-yrs/>
16. Klok FA, Boon GJ a. M, Barco S, Endres M, Geelhoed JJM, Knauss S, et al. The Post-COVID-19 Functional Status (PCFS) Scale: a tool to measure functional status over time after COVID-19. *Eur Respir J* [Internet]. 2020 Jan 1 [cited 2020 Jul 16]; Available from: <https://erj.ersjournals.com/content/early/2020/05/07/13993003.01494-2020>.
17. ICF RESEARCH BRANCH - ICF Core Sets [Internet]. [cited 2020 Jul 21]. Available from: <https://www.icf-research-branch.org/icf-core-sets>.
18. Telemedicine Practice Guidelines. 2020. Ministry of Health and Family Welfare, Government of India Website. <https://www.mohfw.gov.in/pdf/Telemedicine.pdf>. Accessed 21 July 2020.

APPENDIX:

APPENDIX-I: Covid 19 Yorkshire Rehab Screen (C19-YRS)

Patient name and NHS number:

Time and date of call:

Staff member making call:

We are getting in touch with people who have been discharged after having had a diagnosis of coronavirus disease (Covid-19). The purpose of this call is to find out if you are experiencing problems related to your recent illness with coronavirus. We will document this in your clinical notes. We will use this information to direct you to services you may need and inform the development of these services in the future.

*This call will take around 15 minutes. If there's any topics you don't want to talk about you can stop the conversation at any point. Do you agree to talk to me about this today? **Yes** **No***

Opening questions:

Have you had any further medical problems or needed to go back to hospital since your discharge? Re-admitted? Yes <input type="checkbox"/> No <input type="checkbox"/> Details:
Have you used any other health services since discharge (e.g. your GP?) Yes <input type="checkbox"/> No <input type="checkbox"/> Details:

<i>I'll ask some questions about how you might have been affected since your illness. If there are other ways that you've been affected then there will be a chance to let me know these at the end.</i>			
1. Breathlessness	On a scale of 0-10, with 0 being not breathless at all, and 10 being extremely breathless, how breathless are you: (n/a if does not perform this activity)	Now	Pre-Covid
	a) At rest?	0-10: ____	0-10: ____
	b) On dressing yourself?	0-10: ____ N/a <input type="checkbox"/>	0-10: ____ N/a <input type="checkbox"/>
	c) On walking up a flight of stairs?	0-10: ____ N/a <input type="checkbox"/>	0-10: ____ N/a <input type="checkbox"/>
2. Laryngeal/airway complications	Have you developed any changes in the sensitivity of your throat such as troublesome cough or noisy breathing? Yes <input type="checkbox"/> No <input type="checkbox"/> If Yes: rate the significance of impact on a scale of 0-10 (0 being no impact, 10 being significant impact) 0 <input type="checkbox"/> 1 <input type="checkbox"/> 2 <input type="checkbox"/> 3 <input type="checkbox"/> 4 <input type="checkbox"/> 5 <input type="checkbox"/> 6 <input type="checkbox"/> 7 <input type="checkbox"/> 8 <input type="checkbox"/> 9 <input type="checkbox"/> 10 <input type="checkbox"/>		

3. Voice	<p>Have you or your family noticed any changes to your voice such as difficulty being heard, altered quality of the voice, your voice tiring by the end of the day or an inability to alter the pitch of your voice? Yes <input type="checkbox"/> No <input type="checkbox"/></p> <p>If Yes: rate the significance of impact on a scale of 0-10 (0 being no impact, 10 being significant impact) 0 <input type="checkbox"/> 1 <input type="checkbox"/> 2 <input type="checkbox"/> 3 <input type="checkbox"/> 4 <input type="checkbox"/> 5 <input type="checkbox"/> 6 <input type="checkbox"/> 7 <input type="checkbox"/> 8 <input type="checkbox"/> 9 <input type="checkbox"/> 10 <input type="checkbox"/></p>
4. Swallowing	<p><i>Are you having difficulties eating, drinking or swallowing such as coughing, choking or avoiding any food or drinks?</i> Yes <input type="checkbox"/> No <input type="checkbox"/></p> <p>If Yes: rate the significance of impact on a scale of 0-10 (0 being no impact, 10 being significant impact) 0 <input type="checkbox"/> 1 <input type="checkbox"/> 2 <input type="checkbox"/> 3 <input type="checkbox"/> 4 <input type="checkbox"/> 5 <input type="checkbox"/> 6 <input type="checkbox"/> 7 <input type="checkbox"/> 8 <input type="checkbox"/> 9 <input type="checkbox"/> 10 <input type="checkbox"/></p>
5. Nutrition	<p>Are you or your family concerned that you have ongoing weight loss or any ongoing nutritional concerns as a result of Covid-19? Yes <input type="checkbox"/> No <input type="checkbox"/></p> <p>Please rank your appetite or interest in eating on a scale of 0-10 since Covid-19 (0 being same as usual/no problems, 10 being very severe problems/reduction) 0 <input type="checkbox"/> 1 <input type="checkbox"/> 2 <input type="checkbox"/> 3 <input type="checkbox"/> 4 <input type="checkbox"/> 5 <input type="checkbox"/> 6 <input type="checkbox"/> 7 <input type="checkbox"/> 8 <input type="checkbox"/> 9 <input type="checkbox"/> 10 <input type="checkbox"/></p>
6. Mobility	<p>On a 0-10 scale, how severe are any problems you have in walking about? 0 means I have no problems, 10 means I am completely unable to walk about.</p> <p>Now: 0 <input type="checkbox"/> 1 <input type="checkbox"/> 2 <input type="checkbox"/> 3 <input type="checkbox"/> 4 <input type="checkbox"/> 5 <input type="checkbox"/> 6 <input type="checkbox"/> 7 <input type="checkbox"/> 8 <input type="checkbox"/> 9 <input type="checkbox"/> 10 <input type="checkbox"/></p> <p>Pre-Covid: 0 <input type="checkbox"/> 1 <input type="checkbox"/> 2 <input type="checkbox"/> 3 <input type="checkbox"/> 4 <input type="checkbox"/> 5 <input type="checkbox"/> 6 <input type="checkbox"/> 7 <input type="checkbox"/> 8 <input type="checkbox"/> 9 <input type="checkbox"/> 10 <input type="checkbox"/></p>
7. Fatigue	<p>Do you become fatigued more easily compared to before your illness? Yes <input type="checkbox"/> No <input type="checkbox"/></p> <p>If yes, how severely does this affect your mobility, personal cares, activities or enjoyment of life? (0 being not affecting, 10 being very severely impacting)</p> <p>Now: 0 <input type="checkbox"/> 1 <input type="checkbox"/> 2 <input type="checkbox"/> 3 <input type="checkbox"/> 4 <input type="checkbox"/> 5 <input type="checkbox"/> 6 <input type="checkbox"/> 7 <input type="checkbox"/> 8 <input type="checkbox"/> 9 <input type="checkbox"/> 10 <input type="checkbox"/></p> <p>Pre-Covid: 0 <input type="checkbox"/> 1 <input type="checkbox"/> 2 <input type="checkbox"/> 3 <input type="checkbox"/> 4 <input type="checkbox"/> 5 <input type="checkbox"/> 6 <input type="checkbox"/> 7 <input type="checkbox"/> 8 <input type="checkbox"/> 9 <input type="checkbox"/> 10 <input type="checkbox"/></p>
8. Personal-Care	<p>On a 0-10 scale, how severe are any problems you have in personal cares such as washing and dressing yourself?</p> <p>0 means I have no problems, 10 means I am completely unable to do my personal care.</p> <p>Now: 0 <input type="checkbox"/> 1 <input type="checkbox"/> 2 <input type="checkbox"/> 3 <input type="checkbox"/> 4 <input type="checkbox"/> 5 <input type="checkbox"/> 6 <input type="checkbox"/> 7 <input type="checkbox"/> 8 <input type="checkbox"/> 9 <input type="checkbox"/> 10 <input type="checkbox"/></p> <p>Pre-Covid: 0 <input type="checkbox"/> 1 <input type="checkbox"/> 2 <input type="checkbox"/> 3 <input type="checkbox"/> 4 <input type="checkbox"/> 5 <input type="checkbox"/> 6 <input type="checkbox"/> 7 <input type="checkbox"/> 8 <input type="checkbox"/> 9 <input type="checkbox"/> 10 <input type="checkbox"/></p>
9. Continence	<p>Since your illness are you having any <u>new</u> problems with:</p> <ul style="list-style-type: none"> • controlling your bowel Yes <input type="checkbox"/> No <input type="checkbox"/> • controlling your bladder Yes <input type="checkbox"/> No <input type="checkbox"/>
10. Usual Activities	<p>On a 0-10 scale, how severe are any problems you have in do your usual activities, such as your household role, leisure activities, work or study? 0 means I have no problems, 10 means I am completely unable to do my usual activities.</p> <p>Now: 0 <input type="checkbox"/> 1 <input type="checkbox"/> 2 <input type="checkbox"/> 3 <input type="checkbox"/> 4 <input type="checkbox"/> 5 <input type="checkbox"/> 6 <input type="checkbox"/> 7 <input type="checkbox"/> 8 <input type="checkbox"/> 9 <input type="checkbox"/> 10 <input type="checkbox"/></p> <p>Pre-Covid: 0 <input type="checkbox"/> 1 <input type="checkbox"/> 2 <input type="checkbox"/> 3 <input type="checkbox"/> 4 <input type="checkbox"/> 5 <input type="checkbox"/> 6 <input type="checkbox"/> 7 <input type="checkbox"/> 8 <input type="checkbox"/> 9 <input type="checkbox"/> 10 <input type="checkbox"/></p>
11. Pain/discomfort	<p>On a 0-10 scale, how severe is any pain or discomfort you have? 0 means I have no pain or discomfort, 10 means I have extremely severe pain</p> <p>Now: 0 <input type="checkbox"/> 1 <input type="checkbox"/> 2 <input type="checkbox"/> 3 <input type="checkbox"/> 4 <input type="checkbox"/> 5 <input type="checkbox"/> 6 <input type="checkbox"/> 7 <input type="checkbox"/> 8 <input type="checkbox"/> 9 <input type="checkbox"/> 10 <input type="checkbox"/></p> <p>Pre-Covid: 0 <input type="checkbox"/> 1 <input type="checkbox"/> 2 <input type="checkbox"/> 3 <input type="checkbox"/> 4 <input type="checkbox"/> 5 <input type="checkbox"/> 6 <input type="checkbox"/> 7 <input type="checkbox"/> 8 <input type="checkbox"/> 9 <input type="checkbox"/> 10 <input type="checkbox"/></p>
12. Cognition	<p>Since your illness have you had new or worsened difficulty with:</p> <ul style="list-style-type: none"> • concentrating? Yes <input type="checkbox"/> No <input type="checkbox"/>

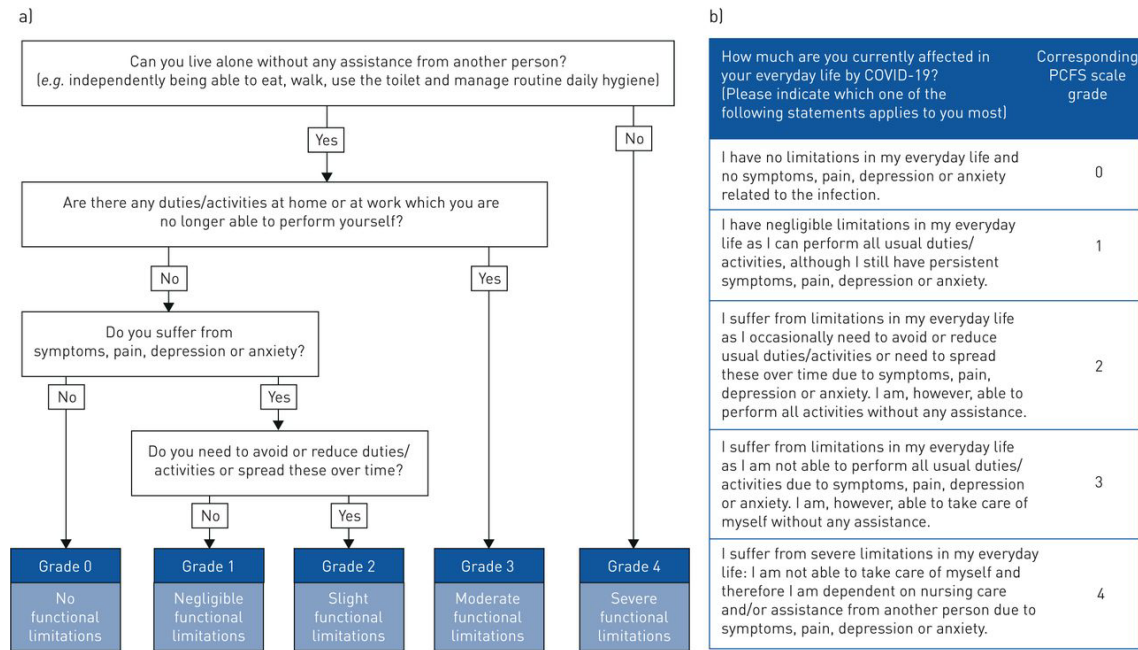
	<ul style="list-style-type: none"> short term memory? Yes <input type="checkbox"/> No <input type="checkbox"/>
13. Cognitive-Communication	<p><i>Have you or your family noticed any change in the way you communicate with people, such as making sense of things people say to you, putting thoughts into words, difficulty reading or having a conversation?</i> Yes <input type="checkbox"/> No <input type="checkbox"/></p> <p>If Yes: rate the significance of impact on a scale of 0-10 (0 being no impact, 10 being significant impact) 0 <input type="checkbox"/> 1 <input type="checkbox"/> 2 <input type="checkbox"/> 3 <input type="checkbox"/> 4 <input type="checkbox"/> 5 <input type="checkbox"/> 6 <input type="checkbox"/> 7 <input type="checkbox"/> 8 <input type="checkbox"/> 9 <input type="checkbox"/> 10 <input type="checkbox"/></p>
14. Anxiety	<p>On a 0-10 scale, how severe is the anxiety you are experiencing? 0 means I am not anxious, 10 means I have extreme anxious.</p> <p>Now: 0 <input type="checkbox"/> 1 <input type="checkbox"/> 2 <input type="checkbox"/> 3 <input type="checkbox"/> 4 <input type="checkbox"/> 5 <input type="checkbox"/> 6 <input type="checkbox"/> 7 <input type="checkbox"/> 8 <input type="checkbox"/> 9 <input type="checkbox"/> 10 <input type="checkbox"/></p> <p>Pre-Covid: 0 <input type="checkbox"/> 1 <input type="checkbox"/> 2 <input type="checkbox"/> 3 <input type="checkbox"/> 4 <input type="checkbox"/> 5 <input type="checkbox"/> 6 <input type="checkbox"/> 7 <input type="checkbox"/> 8 <input type="checkbox"/> 9 <input type="checkbox"/> 10 <input type="checkbox"/></p>
15. Depression	<p>On a 0-10 scale, how severe is the depression you are experiencing? 0 means I am not depressed, 10 means I have extreme depression.</p> <p>Now: 0 <input type="checkbox"/> 1 <input type="checkbox"/> 2 <input type="checkbox"/> 3 <input type="checkbox"/> 4 <input type="checkbox"/> 5 <input type="checkbox"/> 6 <input type="checkbox"/> 7 <input type="checkbox"/> 8 <input type="checkbox"/> 9 <input type="checkbox"/> 10 <input type="checkbox"/></p> <p>Pre-Covid: 0 <input type="checkbox"/> 1 <input type="checkbox"/> 2 <input type="checkbox"/> 3 <input type="checkbox"/> 4 <input type="checkbox"/> 5 <input type="checkbox"/> 6 <input type="checkbox"/> 7 <input type="checkbox"/> 8 <input type="checkbox"/> 9 <input type="checkbox"/> 10 <input type="checkbox"/></p>
16. PTSD screen	<p>a) Have you had any unwanted memories of your illness or hospital admission whilst you were awake, so not counting dreams? Yes <input type="checkbox"/> No <input type="checkbox"/></p> <p>If yes, how much do these memories bother you? (is the distress: mild <input type="checkbox"/> / moderate <input type="checkbox"/> / severe <input type="checkbox"/> / extreme <input type="checkbox"/>)</p> <p>b) Have you had any unpleasant dreams about your illness or hospital admission? Yes <input type="checkbox"/> No <input type="checkbox"/></p> <p>If yes, how much do these dreams bother you? (is the distress: mild <input type="checkbox"/> / moderate <input type="checkbox"/> / severe <input type="checkbox"/> / extreme <input type="checkbox"/>)</p> <p>c) Have you tried to avoid thoughts or feelings about your illness or hospital admission? Yes <input type="checkbox"/> No <input type="checkbox"/></p> <p>If yes, how much effort do you make to avoid these thoughts or feelings? (mild <input type="checkbox"/> / moderate <input type="checkbox"/> / severe <input type="checkbox"/> / extreme <input type="checkbox"/>)</p> <p>d) Are you currently having thoughts about harming yourself in any way? Yes <input type="checkbox"/> No <input type="checkbox"/></p>
17. Global Perceived Health	<p>How good or bad is your health overall? 10 means the best health you can imagine. 0 means the worst health you can imagine.</p> <p>Now: 0 <input type="checkbox"/> 1 <input type="checkbox"/> 2 <input type="checkbox"/> 3 <input type="checkbox"/> 4 <input type="checkbox"/> 5 <input type="checkbox"/> 6 <input type="checkbox"/> 7 <input type="checkbox"/> 8 <input type="checkbox"/> 9 <input type="checkbox"/> 10 <input type="checkbox"/></p> <p>Pre-Covid: 0 <input type="checkbox"/> 1 <input type="checkbox"/> 2 <input type="checkbox"/> 3 <input type="checkbox"/> 4 <input type="checkbox"/> 5 <input type="checkbox"/> 6 <input type="checkbox"/> 7 <input type="checkbox"/> 8 <input type="checkbox"/> 9 <input type="checkbox"/> 10 <input type="checkbox"/></p>
18. Vocation	<p>What is your employment situation and has your illness affected your ability to do your usual work?</p> <p>Occupation: _____</p> <p>Employment status before Covid-19 Lockdown: _____</p> <p>Employment status before you became ill: _____</p> <p>Employment status now: _____</p>
19. Family/carers views	<p>Do you think your family or carer would have anything to add from their perspective?</p>

Closing questions:

Are you experiencing any other new problems since your illness we haven't mentioned?

Any other discussion (clinical notes):

APPENDIX-II: Post-Covid Functional Status Scale



APPENDIX-III: ICF CORE DATA SET

<https://www.icf-research-branch.org/icf-core-sets>