

Appendix 1 – deriving the study cohort

Appendix 1 describes methods for developing a cohort of children eligible for palivizumab or treated using Hospital Treatment Insights (HTI). R scripts used to develop the cohort are available here:

<https://github.com/UCL-CHIG/Palivizumab>

1.1 Developing a birth cohort in HTI

We first developed a cohort of births between 2010 and 2016 captured in HTI to evaluate representativeness of the data compared to the general population of infants in England. We applied algorithms for developing a birth cohort using HES and data cleaning rules described in detail elsewhere.¹ In brief, we extracted all HES hospital admissions between 1st January 2010 and 31st December 2016 where age at admission was <7 days. We excluded stillbirths, indicated multiple births and derived one record per birth. We identified 1,395,579 live births in HTI in 2010-2016, covering 34% of all live births in England.²

We cleaned information on birth weight, gestational age and quintile of Index of Multiple Deprivation (IMD) score using methods published elsewhere.¹ The distribution of live births by birth weight, gestational age and quintile of IMD score was comparable to the distribution among all births in England from national birth statistics published by the Office for National Statistics (Appendix Table 1).^{2,3} Rates of missing data were high in HES/HTI as reported previously: 271,600 (20%) of births had missing birth weight, 395,540 (28%) had missing gestational age and 681,898 (49%) had missing IMD score (Appendix Table 3).¹

Appendix Table 1 – Distribution of birth characteristics in the birth cohort derived from the HTI database vs the gold standard from ONS

	National birth registration data for England (ONS) ^{2,3}			All births in HTI data		
	N	% of all	% excluding records with missing data	N	% of all	% excluding records with missing data
Birth weight (g)*						
Total	4,964,620			1,395,579		
<1000	24,535	0.5%	0.5%	5,344	0.4%	0.5%
1000-1499	29,733	0.6%	0.6%	7,894	0.6%	0.7%
1500-1999	67,268	1.4%	1.4%	15,728	1.1%	1.4%
2000-2499	225,182	4.5%	4.6%	50,418	3.6%	4.5%
2500-2999	806,327	16.2%	16.4%	184,848	13.2%	16.4%
3000-3499	1,751,170	35.3%	35.7%	402,966	28.9%	35.9%
3500-3999	1,449,165	29.2%	29.5%	333,581	23.9%	29.7%
4000+	551,882	11.1%	11.3%	123,200	8.8%	11.0%
Missing	59,358	1.2%		271,600	19.5%	
Gestational age (weeks)						
Total	4,722,941			1,395,579		
<24	4,963	0.1%	0.1%	548	0.0%	0.1%
24-27	15,665	0.3%	0.3%	3,935	0.3%	0.4%
28-31	37,284	0.8%	0.8%	8,398	0.6%	0.8%
32-36	290,884	6.2%	6.2%	59,802	4.3%	6.0%
37-41	4,180,900	88.5%	89.2%	890,420	63.8%	89.0%
42+	156,438	3.3%	3.3%	36,936	2.6%	3.7%
Missing	36,807	0.8%		395,540	28.3%	
IMD scores						
Total	4,722,941			1,395,579		
Q1: least deprived 20%	698,158	14.8%	NA	108,628	7.8%	15.2%
Q2	785,027	16.6%	NA	120,944	8.7%	16.9%
Q3	889,084	18.8%	NA	154,859	11.1%	21.7%
Q4	1,072,623	22.7%	NA	163,473	11.7%	22.9%
Q5: most deprived 20%	1,278,049	27.1%	NA	165,777	11.9%	23.2%
Missing	0	0%	NA	681,898	48.9%	

HTI=Hospital Treatment Insights, IMD=Index of Multiple Deprivation, NA=not applicable, ONS=Office for National Statistics, RSV=respiratory syncytial virus

*Aggregate data by birth weight category combines live births in England and Wales

1.2 Developing a cohort of eligible children

Cohort derivation is presented in Appendix Figure 1. The steps were as follows:

Step 1: identify all HES birth records captured in HTI (as described in Appendix 1.1)

Step 2: indicate potentially eligible children if at least one relevant diagnostic or procedure code were recorded during a hospital admission in the first year of life.

We translated the national palivizumab treatment guidelines (as stated in the 2015 revision of chapter 27a of the Green Book, described in column B of Appendix Table 2)⁴ into an algorithm based on diagnostic codes (the International Classification of Diseases version 10 codes, ICD-10), procedure codes (the Office of Population Censuses and Surveys [OPCS] codes), recorded gestational age and estimated time of birth. Eligibility criteria used in step 2 are listed in column C of Appendix Table 2.

Step 3: exclude babies who died in hospital before the start of RSV season (1st October each calendar year).

Step 4: exclude infants without linked pharmacy dispensing record of any kind

To ensure the cohort does not cover eligible infants who might have received palivizumab treatment in non-HTI hospitals, we needed to exclude infants who were likely to be under the care of non-HTI hospitals (see step 5). Full hospital admission history (from HTI and non-HTI hospitals) is required to determine the most likely hospital of care. This information was only available for infants with at least one pharmacy dispensing record (of any kind). We therefore excluded infants with no linked pharmacy dispensing records (step 4 in Appendix Figure 1). 72% of potentially eligible infants and 19% of all births in HTI had at least one linked pharmacy dispensing record.

Step 5: exclude infants likely to be under care of non-HTI hospitals

We extracted hospital in-patient and outpatient records from HTI and derived summaries of hospital contacts in the first year of life for each child as follows:

- **HES inpatient admission records:**
Episodes of hospital admitted patient care were linked into admissions. Hospital admission was defined as a continuous period in hospital; admissions and transfers on the same day were treated as part of the same hospital admission.⁵ We kept one record per admission and we summed the number of inpatient admissions according to each hospital (non-HTI trusts were classified into one category: "other"). For each child, we retained information about the two hospitals where the child had the highest number of admissions (represented by columns 2 and 3 of Appendix Table 3).
- **HES outpatient appointment records:**
We removed appointments marked as unattended, and de-duplicated appointments according to appointment date, treatment specialty, and hospital. We then summed the number of appointments per hospital per child. For each child, information about two hospitals with the highest number of appointments was retained (represented by columns 4 and 5 of Appendix Table 3).

The most likely hospital of care was indicated based on hierarchal set of rules summarised in Appendix Table 3. Infants receiving most of their care in non-HTI hospitals were excluded from the analyses.

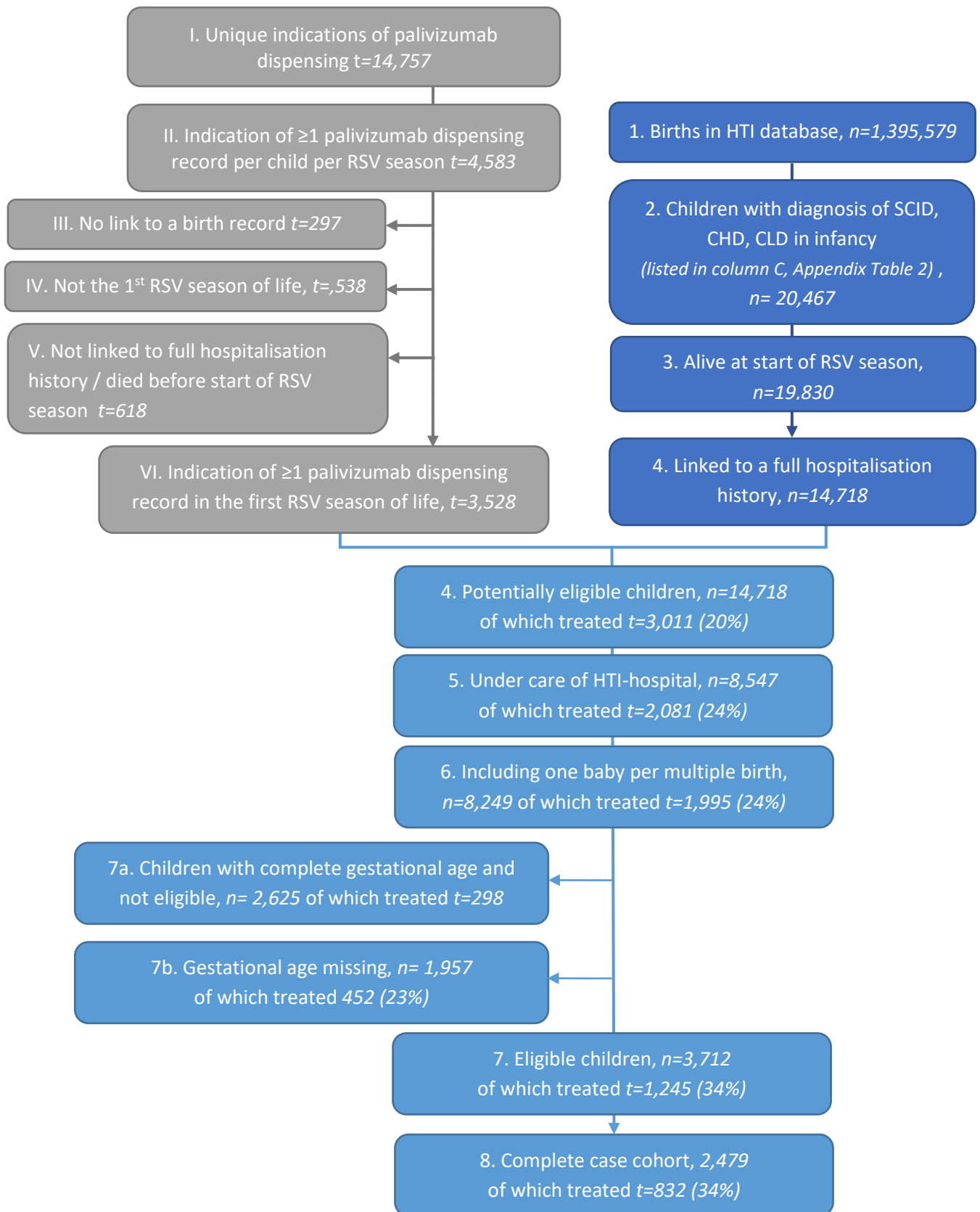
Step 6: select one baby per multiple birth at random (as outcomes among multiples are likely be correlated)

Step 7: apply additional eligibility criteria based on gestational and chronological age

We applied additional gestational age and chronological age eligibility criteria (listed in column D in Appendix Table 2). Infants with complete gestational age who did not meet these eligibility criteria (step 7a) and infants with missing gestational age for whom eligibility was not possible to indicate (step 7b) were excluded.

Step 8: exclude records with missing data on any risk factor of interest for the complete case analyses.

Appendix Figure 1 – Flow chart detailing cohort derivation



CHD=Congenital heart disease, CLD=chronic lung disease, HTI=Hospital Treatment Insights, RSV= respiratory syncytial virus, SCID=severe combined immunodeficiency disorder

Appendix Table 2 – Eligibility criteria for palivizumab treatment in England according to the Green Book, and an algorithm for identifying children eligible for palivizumab treatment in electronic health records

A. Category	B. Eligibility criteria according to chapter 27a of the Green Book, 2015 edition ⁴	C. Step 1 – identify infants potentially eligible for palivizumab treatment	D. Step 2 – finalise the cohort
1. Chronic lung disease (CLD)	<p>1a <u>Preterm</u> infants who have <u>moderate or severe bronchopulmonary dysplasia (BPD)</u> at the chronological ages at the start of the RSV season and gestational ages as follows:</p> <ul style="list-style-type: none"> - Aged <1.5 month & born at <34 weeks' gestation - Aged 1.5-3 months & born at <32 weeks' gestation - Aged 3-6 months & born <28 week's gestation - Aged 6-9 months & born at <24 weeks' gestation <p>Moderate or severe BPD is defined as “<i>preterm infants with compatible x-ray changes who continue to receive supplemental oxygen or respiratory support at 36 weeks post-menstrual age.</i>”</p>	<p>We indicated children with ICD-10 diagnostic code P27 “<i>chronic respiratory disease originating in the neonatal period</i>” recorded anywhere in baby’s record at age <9 months.</p>	<p>We excluded children with missing gestational age</p> <p>We excluded children who had complete gestational age and did not meet gestational and chronological age criteria (according to age on 1st October) listed in column B.</p>
	<p>1b Infants with respiratory diseases who are not necessarily pre-term but <u>who remain in oxygen at the start of the RSV season</u>. These infants may include those with conditions including:</p> <ul style="list-style-type: none"> - <u>pulmonary hypoplasia</u> due to congenital diaphragmatic hernia - <u>other congenital lung abnormalities</u> (sometimes also involving congenital heart disease or lung malformation) - <u>interstitial lung disease</u> - those receiving <u>long term ventilation at the onset of the season</u> 	<p>We indicated children with ICD-10 diagnostic codes:</p> <ul style="list-style-type: none"> - Q33 “Congenital malformations of lung (including hypoplasia)” - Q79.0 “Congenital diaphragmatic hernia” - Q79.1 “Other congenital malformations of diaphragm” - J80 “Adult respiratory distress syndrome” - J81 “Pulmonary oedema” - J82 “Pulmonary eosinophilia, not elsewhere classified” - J84 “Other interstitial pulmonary diseases” <p>We indicated children with OPCS procedure codes:</p> <ul style="list-style-type: none"> - E871 “Home oxygen support” - E872 “Long term oxygen assessment” <p>We included only infants who had any of the above codes recorded during hospital admissions in October & at age <12 months</p>	<p>No step 2</p>

2. Congenital Heart Disease (CHD)	2a	<p>Preterm infants with <u>haemodynamically significant, acyanotic CHD</u> at the chronological ages at the start of the RSV season and gestational ages at birth:</p> <ul style="list-style-type: none"> - Aged <1.5 month & born at <32 weeks' gestation - Aged 1.5-3 months & born at <30 weeks' gestation - Aged 3-6 months & born <26 week's gestation 	<p>We indicated infants aged <6 months with ICD-10 diagnostic codes:</p> <ul style="list-style-type: none"> - Q20 "Congenital malformations of cardiac chambers and connections" - Q21 "Congenital malformations of cardiac septa" - Q22 "Congenital malformations of pulmonary and tricuspid valves" - Q23 "Congenital malformations of aortic and mitral valves" - Q24 "Other congenital malformations of heart" - Q25 "Congenital malformations of great arteries" - Q26 "Congenital malformations of great veins" <p>Indicate children aged <6 months with OPCS procedure codes:</p> <ul style="list-style-type: none"> - Chapter K (K01-K99) "Heart" - Selected codes from chapter L "Arteries and veins" (L01-L29, L65-L83) 	<p>We excluded children with missing gestational age</p> <p>We excluded children who had complete gestational age and did not meet gestational and chronological age criteria (according to age on 1st October) listed in column B.</p>
	2b	<p>Infants with <u>cyanotic or acyanotic CHD plus significant co-morbidities</u>, particularly if multiple organ systems are involved</p>	<p>We indicated infants with diagnostic and procedure codes listed above (2a), and a neurological condition from Hardeid code list⁶ recorded during any hospital admission at age <12 months.</p>	<i>No step 2</i>
3. Severe combined immunodeficiency (SCID) syndrome	<p>Children less than 24 months of age with <u>SCID</u> - the most severe form of inherited deficiency of immunity, who are unable to mount either T-cell responses or produce antibody against infectious agents – until immune reconstituted.</p>	<p>We indicated children aged <24 with ICD-10 diagnostic codes:</p> <ul style="list-style-type: none"> - D81 "Combined immunodeficiencies" - D82: "Immunodeficiency associated with other major defects" <p>We used the latest discharge date for admission with any of these codes as time when immunity reconstituted. Children were eligible if they were aged <12 months (as we focus on the first RSV season of life) and this date was after start of RSV season.</p>	<i>No step 2</i>	

BPD: bronchopulmonary dysplasia, CHD: congenital heart disease, CLD: chronic lung disease, ICD-10: International Classification of Diseases version 10, OPCS: the Office of Population Censuses and Surveys system, RSV: respiratory syncytial virus, SCID: severe combined immunodeficiency syndrome

Appendix Table 3 – Algorithm for identifying the most likely hospital of care per child based on their HES inpatient and outpatient records

Rule nr	Hosp_APC_1: Hospital with the highest number of inpatient admissions	Hosp_APC_2: Hospital with the 2 nd highest number of inpatient admissions	Hosp_OP_1: Hospital with the highest number of outpatient appointments	Hosp_OP_2: Hospital with the 2 nd highest number of outpatient appointments	Selected most likely hospital of care
1	Agree	Not used	Agree	Not used	Hosp_APC_1 = Hosp_OP_1
2	no recorded admissions	Not used	Complete	Not used	Hosp_OP_1
3	Complete	Not used	no recorded appointments	Not used	Hosp_APC_1
4	Not used	Agree	Agree	Not used	Hosp_APC_2 = Hosp_OP_1
5	Agree	Not used	Not used	Agree	Hosp_APC_1 = Hosp_OP_2
6	Not used	Agree	Not used	Agree	Hosp_APC_2 = Hosp_OP_2
7	No agreement	No agreement or no 2 nd hospital	No agreement	No agreement or no 2 nd hospital	“other”

HES: Hospital Episode Statistics

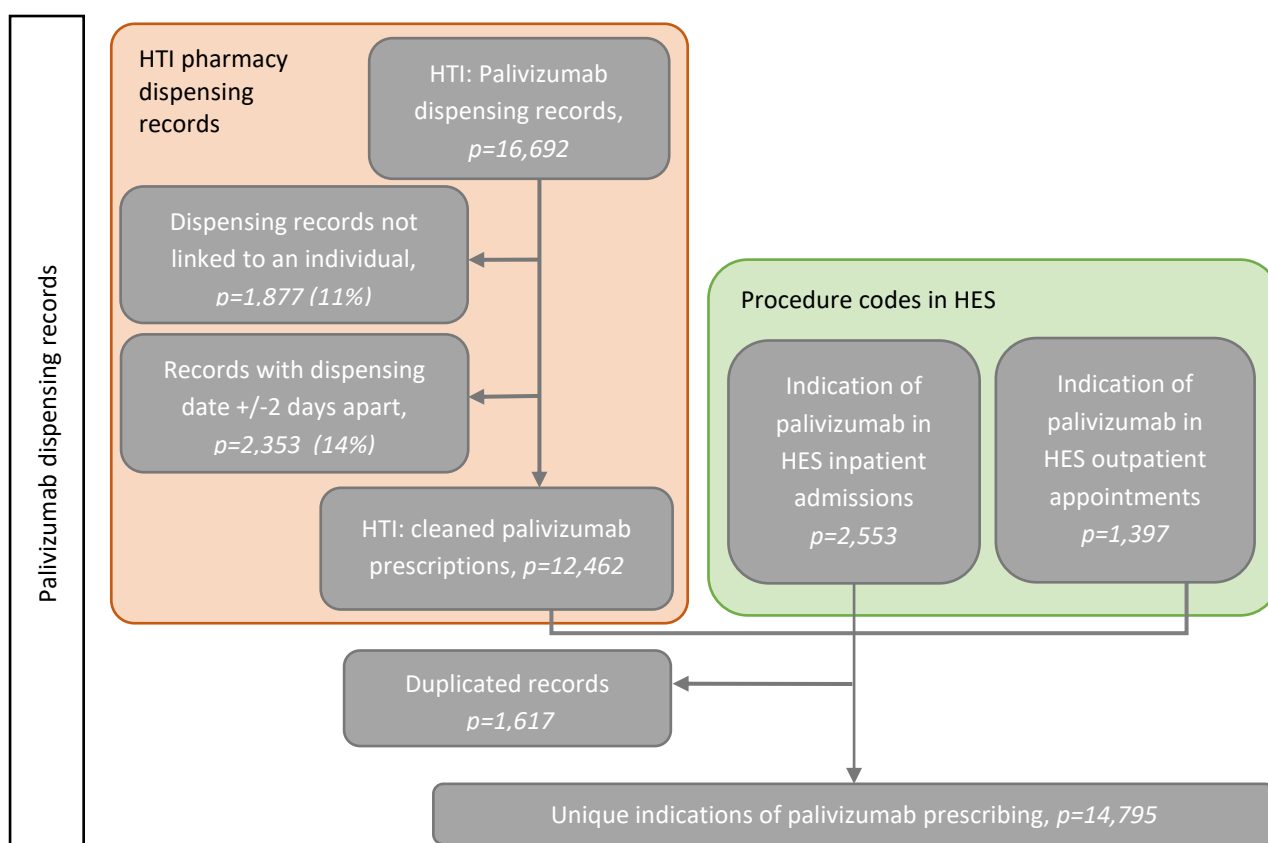
1.3 Deriving indication of palivizumab treatment from HTI database

1.3.1 Cleaning and validating palivizumab dispensing records

Data cleaning for palivizumab dispensing records is illustrated in the top part of Appendix Figure 2. We identified 16,692 palivizumab dispensing records between 1st September 2010 and 31st January 2017. We removed 1,877 (11%) of dispensing records which were not linked to an individual (these could be dispensed as e.g. ward stock or they could be missed links between HES and dispensing data), and 2,353 (14%) dispensing records with date +/-2 days apart. This resulted in 12,462 records indicated in HTI data.

We additionally looked for indication of palivizumab based on procedure code X86.5 “Respiratory syncytial virus prevention drugs band 1”. We identified 2,553 such codes in inpatient records and 1,397 codes in outpatient records. We linked records indicating palivizumab from HTI, HES inpatient and outpatient data, deduplicated records with dispensing date within +/-2 days. HTI data (enhanced with information from HES) included 14,795 records of palivizumab dispensing.

Appendix Figure 2– Flow chart illustrating data cleaning for palivizumab prescription records

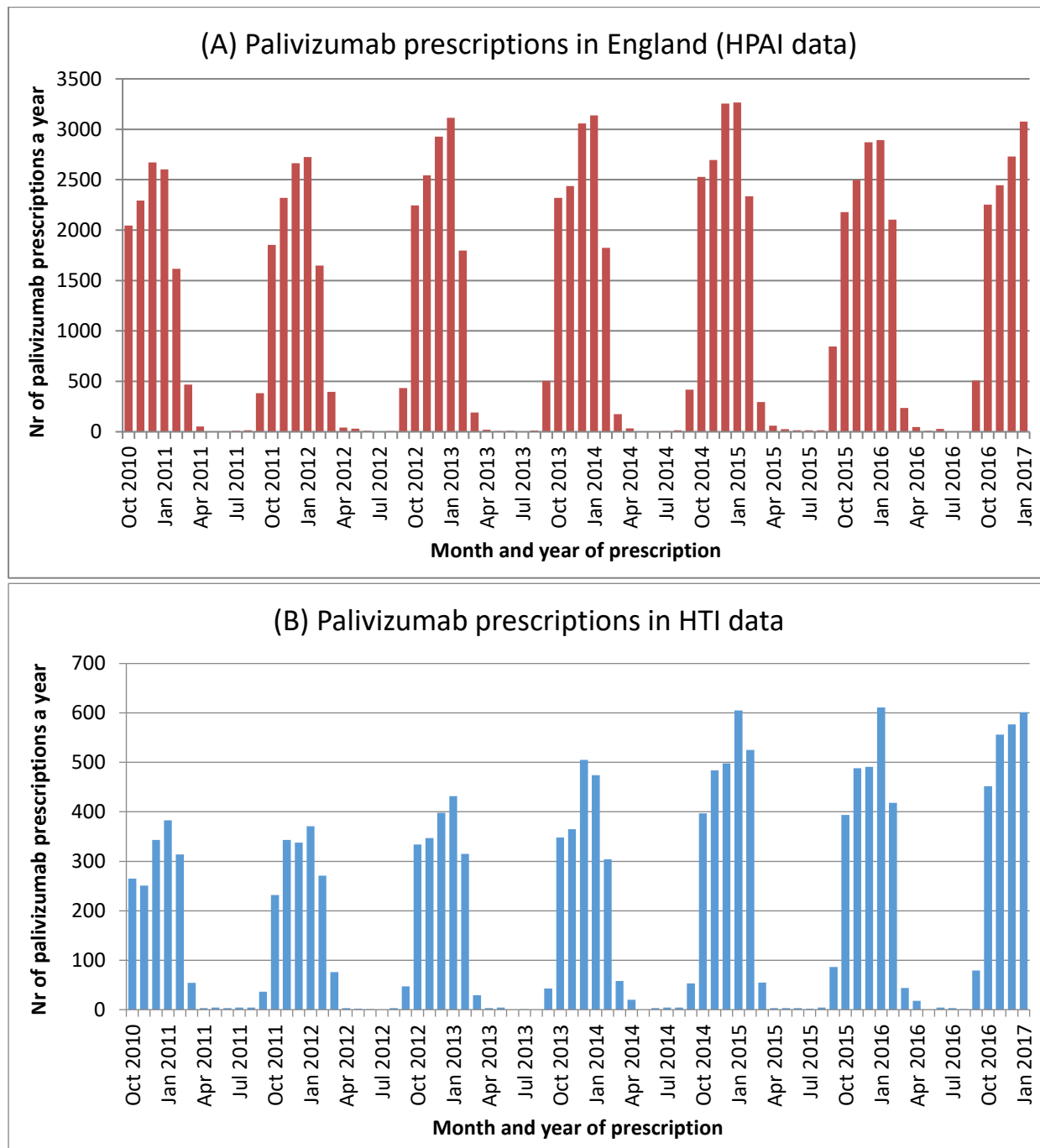


HES=Hospital Episode Statistics, HTI=Hospital Treatment Insights, RSV=respiratory syncytial virus

To evaluate representativeness of this data, we compared the distribution of palivizumab dispensing in HTI with nationally representative aggregate hospital dispensing data from the Hospital Pharmacy Audit Index (HPAI) database, also held by IQVIA, by month and year of birth.⁷ HTI data covered 14,785 of the 90,333 palivizumab dispensing records indicated in HPAI (16%). This is lower than expected (HTI captures approximately 30% of hospitals in England). Some of the HTI-hospitals may not have paediatric services where palivizumab would be likely to be prescribed. We were not able to explore this further as hospitals are pseudonymised in the HTI database.

Seasonal patterns of palivizumab dispensing were comparable between the two sources (Appendix Figure 3). The number of palivizumab dispensing records in HTI has increased over time, unlike in HPAI. This likely reflected improved linkage between HTI and HES (the proportion of HTI records with no linked HESID declined over time, data not shown).

Appendix Figure 3 – Number of prescriptions from HTI database compared to HPAI⁷



HPAI: Hospital Pharmacy Audit Index, HTI=Hospital Treatment insights,

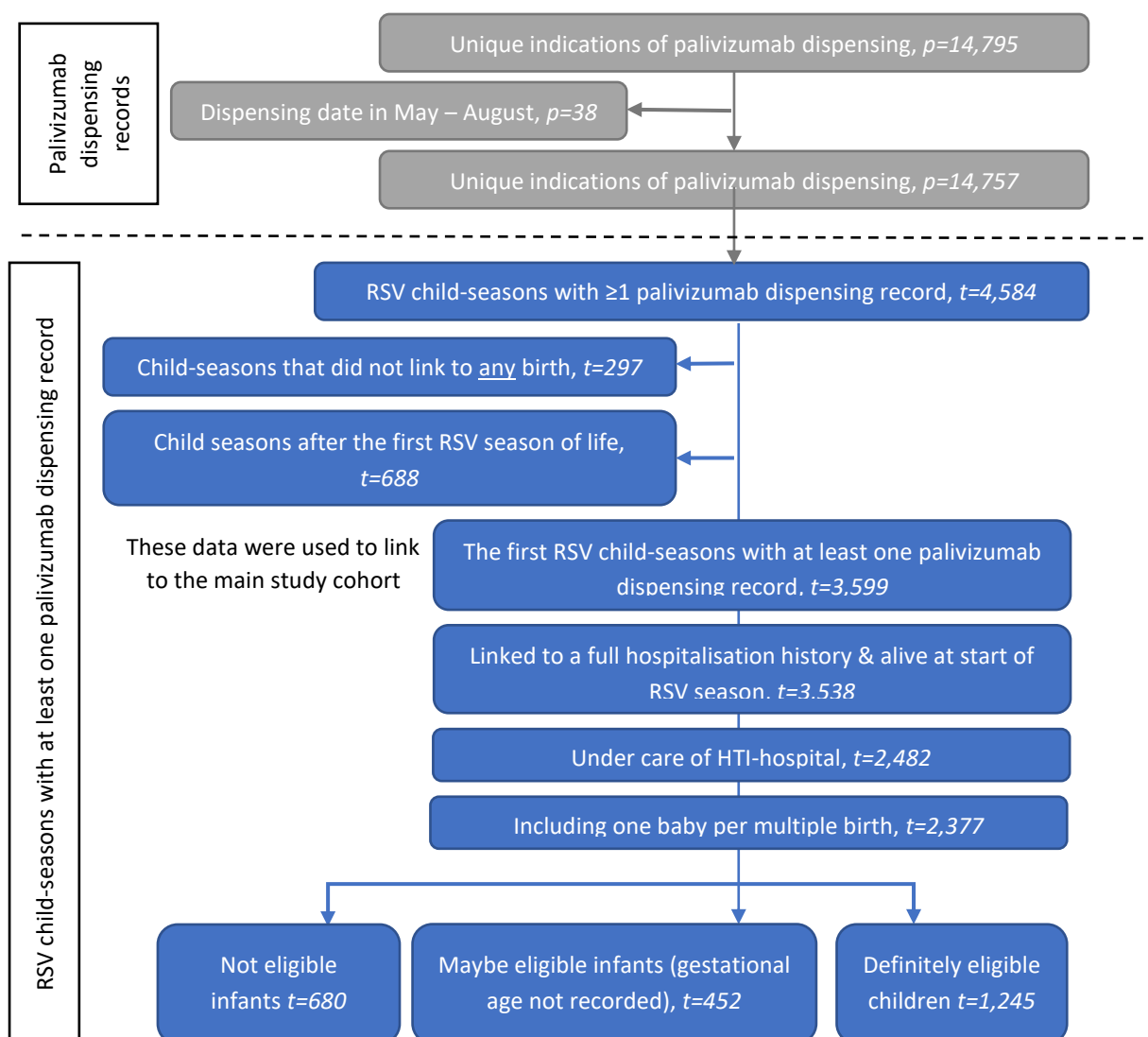
1.3.2 Summarising information about palivizumab prescription records

We removed palivizumab records dispensed between May and August. We were left with 14,757 records for 4,268 individuals (Appendix Figure 4).

Information about palivizumab dispensing was summarised for each child for each RSV season (referred to as child-seasons). There were 4,583 child-seasons for the 4,268 children in the HTI data. We removed child-seasons which did not link to a HES birth record and palivizumab prescriptions after child's first RSV season of life ($n=688$). The remaining 3,599 child-seasons were linked to the cohort of potentially eligible infants.

To investigate possible off-label prescribing, we applied the same exclusion criteria for dispensing records as for the cohort of eligible infants – we removed child-seasons for children who did not have full hospital admission history, died before the start of RSV season or were not under care of HTI-hospital and we selected one infant per multiple birth. We then separated prescribing in infants who were eligible, who were possibly eligible but had missing gestational age, and in infants who were not eligible.

Appendix Figure 4 – Flow chart illustrating data cleaning for palivizumab records



HES=Hospital Episode Statistics, HTI=Hospital Treatment Insights, RSV=respiratory syncytial virus

2 Appendix 2 – additional results

2.1 Secondary analyses

Appendix Table 4 – Characteristics of children who were treated with palivizumab

	Definitely eligible	Maybe eligible - missing gestational age	Not eligible
Total (% of all)	1245 (52%)	452 (19%)	680 (29%)
Age at start of RSV season			
born during season	203 (16%)	78 (17%)	100 (15%)
<1.5 months	260 (21%)	88 (19%)	36 (5%)
1.5-3 months	261 (21%)	93 (21%)	158 (23%)
3-6 months	349 (28%)	128 (28%)	240 (35%)
6-9 months	172 (14%)	65 (14%)	131 (19%)
9-12 months	NA	NA	15 (2%)
Eligibility conditions*			
Heart condition	882 (71%)	212 (47%)	207 (30%)
Lung condition	1039 (83%)	343 (76%)	118 (17%)
Gestational age (weeks)			
<26	265 (21%)		28 (4%)
26-27	322 (26%)		66 (10%)
28-29	177 (14%)		111 (16%)
30-31	57 (5%)		48 (7%)
32-36	24 (2%)		77 (11%)
37+	63 (5%)		194 (29%)
Missing	337 (27%)		156 (23%)
Birthweight (g)			
<1000	554 (44%)	52 (12%)	113 (17%)
1000-1499	256 (21%)	46 (10%)	130 (19%)
1500-2499	63 (5%)	28 (6%)	96 (14%)
2500+	62 (5%)	21 (5%)	199 (29%)
Missing	310 (25%)	305 (67%)	142 (21%)
Presence of other types of comorbidities			
None	142 (11%)	144 (32%)	240 (35%)
Respiratory	363 (29%)	106 (23%)	124 (18%)
Cardiovascular	229 (18%)	76 (17%)	125 (18%)
Neurological/sensory	901 (72%)	100 (22%)	99 (15%)
Musculoskeletal/skin	136 (11%)	20 (4%)	14 (2%)
Metabolic/endocrine/digestive/renal/genitourinary	333 (27%)	78 (17%)	94 (14%)
Congenital anomalies	303 (24%)	90 (20%)	180 (26%)
Cancers/blood	167 (13%)	54 (12%)	67 (10%)
Chronic infections	25 (2%)	<10	<10
Other chronic conditions	194 (16%)	68 (15%)	113 (17%)
Sex			
Female	551 (44%)	188 (42%)	301 (44%)
Male	694 (56%)	264 (58%)	379 (56%)
RSV season			
2010	129 (10%)	46 (10%)	69 (10%)
2011	140 (11%)	52 (12%)	72 (11%)
2012	182 (15%)	58 (13%)	98 (14%)
2013	177 (14%)	82 (18%)	86 (13%)
2014	219 (18%)	86 (19%)	137 (20%)
2015	200 (16%)	64 (14%)	93 (14%)
2016	198 (16%)	64 (14%)	125 (18%)

NA=not applicable, RSV=respiratory syncytial virus

*Note that these categories are not mutually exclusive and column total will not add up to 100%

2.2 Sensitivity analyses

Appendix Table 5 – Baseline characteristics of children who were eligible and had complete information on all risk factors, overall and by treatment status (strict definition)

	All eligible children		Complete case cohort	
	N (%) of children in the cohort	N (%) treated	N (%) of children in the cohort	N (%) treated
Total	1801	751 (42%)	1588	673 (42%)
Conditions related to eligibility*				
Congenital heart disease	1271 (71%)	510 (40%)	1126 (71%)	453 (40%)
Chronic lung disease	1311 (73%)	666 (51%)	1153 (73%)	598 (52%)
Severe combined immunodeficiency	20 (1%)	10 (50%)	15 (1%)	<10
2 or more of above	800 (44%)	435 (54%)	705 (44%)	384 (54%)
Gestational age (weeks)				
<26	451 (25%)	234 (52%)	409 (26%)	213 (52%)
26-27	584 (32%)	276 (47%)	527 (33%)	254 (48%)
28-29	413 (23%)	149 (36%)	373 (23%)	133 (36%)
30+	307 (17%)	78 (25%)	279 (18%)	73 (26%)
Missing	46 (3%)	14 (30%)		
Birth weight (g)				
<1000	861 (48%)	426 (49%)	842 (53%)	419 (50%)
1000-1499	591 (33%)	209 (35%)	571 (36%)	204 (36%)
1500-2499	141 (8%)	34 (24%)	129 (8%)	32 (25%)
2500+	53 (3%)	19 (36%)	46 (3%)	18 (39%)
Missing	155 (9%)	63 (41%)		
Sex				
Female	812 (45%)	329 (41%)	715 (45%)	295 (41%)
Male	989 (55%)	422 (43%)	873 (55%)	378 (43%)
IMD Quintile				
Q1: least deprived 20%	217 (12%)	75 (35%)	197 (12%)	68 (35%)
Q2	292 (16%)	120 (41%)	270 (17%)	110 (41%)
Q3	396 (22%)	182 (46%)	351 (22%)	165 (47%)
Q4	377 (21%)	150 (40%)	336 (21%)	130 (39%)
Q5: most deprived 20%	471 (26%)	213 (45%)	434 (27%)	200 (46%)
Missing	48 (3%)	11 (23%)		
Age at start of RSV season				
born during season	711 (39%)	156 (22%)	624 (39%)	145 (23%)
<1.5 months	421 (23%)	201 (48%)	367 (23%)	178 (49%)
1.5-2 months	323 (18%)	188 (58%)	291 (18%)	167 (57%)
3-5 months	346 (19%)	206 (60%)	306 (19%)	183 (60%)
Presence of other types of comorbidities**				
No	465 (26%)	139 (30%)	401 (25%)	119 (30%)
Yes	1336 (74%)	612 (46%)	1187 (75%)	554 (47%)
RSV season				
2010/11	210 (12%)	82 (39%)	168 (11%)	63 (38%)
2011/12	260 (14%)	90 (35%)	230 (14%)	82 (36%)

2012/13	264 (15%)	114 (43%)	242 (15%)	105 (43%)
2013/14	281 (16%)	102 (36%)	255 (16%)	94 (37%)
2014/15	281 (16%)	129 (46%)	250 (16%)	116 (46%)
2015/16	268 (15%)	124 (46%)	237 (15%)	113 (48%)
2016/17	237 (13%)	110 (46%)	206 (13%)	100 (49%)
Multiple birth				
Yes	374 (21%)	147 (39%)	325 (20%)	126 (39%)
No	1427 (79%)	604 (42%)	1263 (80%)	547 (43%)

IMD=Index of Multiple Deprivation, RSV=respiratory syncytial virus;

*Note that these categories are not mutually exclusive and column total will not add up to 100%;

** These included congenital anomalies, cancer/blood disorders, chronic infections, metabolic/ endocrine/ digestive/ renal/ genitourinary conditions, musculoskeletal/skin conditions, neurological/sensory conditions or other non-specific chronic conditions)

Appendix Table 6 – Results from logistic regression models based on strict eligibility criteria

	Fixed effects model	Random effects model
Complexity (SCID, CHD, CLD)		
1 condition	1	1
2 or more conditions	2.04 (1.61, 2.60)	2.16 (1.67, 2.80)
Gestational age (weeks)		
<26	1.47 (1.00, 2.16)	1.57 (1.04, 2.37)
26-27	1.57 (1.10, 2.24)	1.68 (1.15, 2.45)
28-29	1.32 (0.91, 1.91)	1.38 (0.94, 2.05)
30+	1	1
Other chronic conditions		
No	1	1
Yes	1.30 (1.00, 1.68)	1.33 (1.00, 1.75)
Age at start of RSV season		
born during season	1	1
<1.5 months	3.22 (2.41, 4.29)	3.52 (2.58, 4.78)
1.5-2 months	4.20 (3.08, 5.74)	5.21 (3.70, 7.33)
3-5 months	4.13 (2.99, 5.70)	5.08 (3.58, 7.21)
Sex		
Female	1	1
Male	1.08 (0.87, 1.35)	1.04 (0.82, 1.31)
IMD Quintile		
Q1: least deprived 20%	1	1
Q2	1.21 (0.80, 1.83)	1.31 (0.83, 2.06)
Q3	1.42 (0.96, 2.10)	1.43 (0.92, 2.21)
Q4	1.22 (0.82, 1.81)	1.22 (0.78, 1.90)
Q5: most deprived 20%	1.70 (1.16, 2.48)	1.69 (1.09, 2.60)
RSV season		
2010	1	1
2011	0.89 (0.57, 1.39)	0.88 (0.55, 1.43)
2012	1.31 (0.84, 2.02)	1.21 (0.75, 1.94)
2013	0.91 (0.59, 1.41)	0.87 (0.54, 1.39)
2014	1.48 (0.96, 2.29)	1.60 (1.00, 2.57)
2015	1.54 (0.99, 2.39)	1.48 (0.92, 2.38)
2016	1.43 (0.91, 2.24)	1.41 (0.86, 2.29)

CHD=congenital heart disease, CLD=chronic lung disease, IMD=Index of Multiple Deprivation, RSV=respiratory syncytial virus, SCID=severe combined immunodeficiency syndrome

References:

1. Zylbersztejn A, Gilbert R, Hardelid P. Developing a national birth cohort for child health research using a hospital admissions database in England: The impact of changes to data collection practices. Simeoni U, ed. *PLoS One*. 2020;15(12):e0243843. doi:10.1371/journal.pone.0243843
2. Office for National Statistics. Number of live births, stillbirths and infant deaths by Index of Multiple Deprivation (IMD) and gestational age at birth for England, 2006 to 2016 - Office for National Statistics. <https://www.ons.gov.uk/peoplepopulationandcommunity/birthsdeathsandmarriages/deaths/adhocs/010294numberoflivebirthsstillbirthsandinfantdeathsbyindexofmultipledeprivationimdandgestationalageatbirthforengland2006to2016>. Published 2019. Accessed February 28, 2020.
3. Office for National Statistics. Child mortality (death cohort) tables in England and Wales - Office for National Statistics. <https://www.ons.gov.uk/peoplepopulationandcommunity/birthsdeathsandmarriages/deaths/datasets/childmortalitystatisticschildhoodinfantandperinatalchildhoodinfantandperinatalmortalityinenglandandwales>. Published 2018. Accessed June 3, 2019.
4. Public Health England. Respiratory Syncytial Virus: The Green Book, Chapter 27a. 2015.
5. Hardelid P, Dattani N, Davey J, Pribramska I, Gilbert R. *Overview of Child Deaths in the Four UK Countries*. 2013. London; 2013. <http://scholar.google.com/scholar?hl=en&btnG=Search&q=intitle:Overview+of+child+deaths+in+the+four+UK+countries#7>. Accessed November 18, 2014.
6. Hardelid P, Dattani N, Gilbert R. Estimating the prevalence of chronic conditions in children who die in England, Scotland and Wales: a data linkage cohort study. *BMJ Open*. 2014;4(8):e005331. doi:10.1136/bmjopen-2014-005331
7. NHS Digital. Prescribing Costs in Hospitals and the Community, England 2016/17 -. <https://digital.nhs.uk/data-and-information/publications/statistical/prescribing-costs-in-hospitals-and-the-community/2016-17>. Accessed January 4, 2021.