

1 **TITLE**

2 **Testicular microvascular flow is altered in Klinefelter syndrome and**  
3 **predicts circulating testosterone**

4

5 Francesco Carlomagno<sup>§</sup>, Carlotta Pozza<sup>§</sup>, Marta Tenuta, Riccardo Pofi, Luigi Tarani, Franz  
6 Sesti, Marianna Minnetti, Daniele Gianfrilli & Andrea M. Isidori\*

7 *Department of Experimental Medicine, Sapienza University of Rome, 00161, Rome*

8

9 **Short title:** Impaired Testosterone outflow in Klinefelter syndrome

10

11 No more than **6 keywords:**

12 Klinefelter syndrome, vasculature, blood flow, contrast-enhanced ultrasonography,  
13 testosterone, hypogonadism

14 **\*Correspondence to:**

15 Andrea M. Isidori  
16 Department of Experimental Medicine,  
17 Sapienza University of Rome  
18 Viale Regina Elena 324  
19 00161 Roma  
20 Italy  
21 Tel: +39 0649972603  
22 Fax: +39 0649970598  
23 E-mail: [andrea.isidori@uniroma1.it](mailto:andrea.isidori@uniroma1.it)

24

25 Total word count: 3203

26

27 Any grants or fellowships supporting the writing of the paper: Ministry of Health - NET-2018-  
28 12365454.

29 Disclosure summary: authors have nothing to disclose

30

31 **ABSTRACT**

32 **Context.** Experimental studies on Klinefelter syndrome (KS) reported increased intratesticular  
33 testosterone (T) levels coexisting with reduced circulating levels. Abnormalities in testicular  
34 microcirculation have been claimed; however, no studies investigated *in vivo* testicular blood  
35 flow dynamics in humans with KS.

36 **Objective.** To analyze the testicular microcirculation in KS by contrast-enhanced  
37 ultrasonography (CEUS) and correlate vascular parameters with endocrine function.

38 **Design and Setting.** Prospective study. University Settings.

39 **Patients.** 51 testicular scans, 17 testes from 10 T-naïve subjects with KS and 34 testes from  
40 age-matched eugonadal men (CNT) who underwent CEUS for incidental nonpalpable  
41 testicular lesions.

42 **Main Outcomes.** CEUS kinetic parameters.

43 **Results.** CEUS revealed slower testicular perfusion kinetics in subjects with KS than in age-  
44 matched CNT. Specifically, the wash-in time ( $T_{in}$ ,  $p = 0.008$ ), mean transit time (MTT,  $p =$   
45  $0.008$ ), time to peak (TTP,  $p < 0.001$ ), and washout time ( $T_{out\ 50\%}$ ,  $p = 0.008$ ) were all prolonged.  
46 Faster testicular blood flow was associated with higher total T levels. Principal component  
47 analysis and multiple linear regression analyses confirmed the findings, and supported a role  
48 for reduced venous blood flow as independent predictor of total T levels.

49 **Conclusions.** Testicular venous blood flow is altered in KS and independently predicts T  
50 peripheral release.

51

## 52 INTRODUCTION

53 Cardiovascular disease represents a major factor accounting for increased morbidity and  
54 mortality in subjects with Klinefelter syndrome (KS) (1,2). A Danish population study  
55 documented an approximately 2-fold increased risk of hospitalization because of circulatory  
56 diseases, which were present even before the diagnosis of KS, and a 4-fold increased risk of  
57 congenital heart malformations (2). In contrast, a British population study documented a 30%  
58 increase in mortality owing to circulatory diseases and a 7-fold increase in mortality owing to  
59 cardiovascular congenital anomalies compared with the background population (1).  
60 Contributing factors with respect to the heart and vasculature have been confirmed.

61 In the hearts of subjects with KS, an increased prevalence of mitral valve prolapse has been  
62 reported by some earlier studies (3,4), alongside diastolic dysfunction (5,6), chronotropic  
63 incompetence (6), and a shortened QTc interval (7). Vascular anomalies intrinsic to KS are  
64 evidenced by the finding of reduced luminal diameter of the main arterial blood vessels  
65 (namely, brachial artery, common carotid and femoral arteries, and abdominal aorta) (8), which  
66 is not explained by testosterone (T) levels or gonadal status and is coherent with a supposed X  
67 chromosome gene dosage effect; the opposite is indeed true in Turner syndrome, in which a  
68 tendency toward dilation of major arteries is observed (9). Furthermore, venous thrombosis is  
69 especially common in KS, with a 4- to 8-fold increased risk, and significantly contributes to  
70 the overall morbidity and mortality, independently of testosterone treatment and especially in  
71 young men (2,10,11).

72 Little is known regarding testicular vasculature and vascular abnormalities in subjects with KS  
73 and how these factors are possibly related to testicular function and frequent hypoandrogenism  
74 observed in this condition (12). Most intriguingly, a preliminary report from 2014 documented  
75 higher intratesticular T (ITT) levels in subjects with KS than those in normal controls, despite  
76 low serum T levels, resulting in a markedly increased ITT/T ratio (8 to 10 times higher in KS

77 compared to controls), whereas the ITT/luteinizing hormone (LH) ratio was comparable among  
78 subjects with KS, patients with Sertoli-cell-only syndrome, and subjects with normal  
79 spermatogenesis (13). Under the assumption of normal Leydig cell function, the authors  
80 explored a “vascular” explanation for the lack of T release in the bloodstream and found  
81 evidence of vascular abnormalities in testis biopsies from adult male 41,XX<sup>Y</sup>\* vs 40,XY\* mice.  
82 They observed a decreased blood vessel/testis surface ratio and, thus, speculated whether T  
83 production is not actually impaired in men with KS, but its release in the systemic circulation  
84 is hampered. They suggest that a reduced vascular bed is responsible for a lower T release into  
85 the bloodstream (13). The same group subsequently investigated the timing of vascular  
86 alterations during testicular development in mice, and found that such alteration are  
87 progressively acquired, with a lower number of small- and mid-sized blood vessels only in  
88 adult KS mice. They further conducted a study on testicular blood flow via contrast-enhanced  
89 ultrasonography (CEUS) and demonstrated reduced perfusion parameters, in favor of impaired  
90 testicular vascularization in KS mice (14).

91 Conversely, in human testicular biopsies obtained during testicular sperm extraction (TESE)  
92 procedure from prepubertal, pubertal, and adult subjects with KS, no differences were observed  
93 in blood vessel number or density when compared with age-matched control samples, except  
94 an increase in smaller vessels in prepubertal children only (15).

95 Color-flow systems used for the detection of vascular flow are challenged by the weak  
96 backscatter of blood relative to the tissue (−40 to −60 dB). The practical consequence of this  
97 challenge is limited sensitivity to low-velocity flow in smaller vessels (diameter < 2 mm), blood  
98 flow in deep vessels (diameter > 10 cm), and flow in regions with tissue motion (16). In the  
99 last decades, researchers have developed methods to detect perfusion using microbubbles to  
100 improve vascular flow on images. Following a bolus injection, the larger feeding vessels of the  
101 vascular tree can be visualized until the microcirculation fills. The use of intravascular CEUS

102 has developed considerably and proved to be useful in many diagnostics fields (17-21). CEUS  
103 combines US with intravenous administration of ultrasonographic contrast medium comprising  
104 extremely small-sized US-detectable microbubbles (<10  $\mu\text{m}$ ), thus allowing visualization of  
105 the normal parenchymal microcirculation.

106 Based on these, the present study aimed to assess *in vivo* testicular blood flow using CEUS  
107 examination in adolescent and adult subjects with KS and to correlate vascular kinetics with  
108 endocrine function.

109

## 110 **MATERIALS AND METHODS**

### 111 **Study participants**

112 The PROMETEO study (PRecisiOn MEdicine to Target frailty of Endocrine-metabolic Origin)  
113 is a large multicenter prospective observational trial aimed at stratification risk and clinical  
114 score for the early recognition of endocrine frailty due to gonadal and adrenal disorders,  
115 focusing on cardiovascular (CV) and metabolic complications (Ethic Committee approval -  
116 RIF.CE 5563 prot. Prot n 727/19 of 12/09/2019). All participating patients provided written  
117 informed consent to the study.

118 Patients with KS or testicular lesions are at risk of developing hypogonadism, and, according  
119 to the protocol, they are screened with full hormonal assessment, plain testicular  
120 ultrasonography and, in case of altered echotexture, Contrast-Enhanced-Ultrasonography  
121 (CEUS). The inclusion criteria were as follows: 1) confirmed diagnosis of classic, non-mosaic  
122 47, XXY KS based on karyotype analysis of leukocytes from peripheral blood; 2) availability  
123 of CEUS data; and 3) availability of concurrent clinical and hormonal data for correlation  
124 analyses. The exclusion criteria were as follows: 1) presence of other known genetic or  
125 chromosomal disorders; 2) anamnesis of cryptorchidism, testicular surgery, chemotherapy, or  
126 radiotherapy involving the pituitary gland or testes; and 3) current or previous T replacement  
127 therapy (TRT). Between, August 2020 and February 2021, 17 testicular scans, from 10 patients  
128 with KS and 34 testes from 34 eugonadal men who underwent CEUS for incidental  
129 nonpalpable testicular lesions being considered for analyses.

130 Control male subjects (CNT) were randomly matched to cases at a ratio of 2:1 testes by age  
131 ( $\pm 1$  year) and selected from subjects attending our outpatient clinic. They presented no clinical  
132 or biochemical evidence of hypogonadism, met the same inclusion and exclusion criteria  
133 described above (except KS diagnosis), and underwent testicular CEUS examination for the  
134 differential diagnosis of nonpalpable testicular lesions incidentally encountered during

135 screening procedures conducted for varicocele and scrotal pain and during andrological  
136 prevention campaigns for high school and university students. All lesions were benign in nature  
137 at subsequent histology (n = 26 Leydig cell tumors, three epidermoid cysts, three focal fibrosis,  
138 one adenomatoid tumor, and one simple cyst).

### 139 **Hormonal evaluation**

140 Blood samples were obtained via antecubital venous puncture in the early morning (07:30–  
141 09:30 AM) after overnight fasting. Samples were centrifuged, and the serum was immediately  
142 frozen at  $-20^{\circ}\text{C}$ . LH, follicle-stimulating hormone (FSH), sex hormone binding globulin  
143 (SHBG), and T levels were measured in duplicate using the chemiluminescent microparticle  
144 immunoassay (Architect System, Abbott Laboratories, IL, USA) with limits of detection of  
145 0.07 mUI/mL, 0.05 mUI/mL, 0.28 nmol/L, and 0.1 nmol/L, respectively. The intra- and inter-  
146 assay coefficients of variation were as follows: 3.8% and 5.5% at 4.1 mUI/mL (LH), 3.6% and  
147 5.4% at 3.2 mUI/mL (FSH), 5.65% and 9.54% at 8.8 nmol/L (SHBG), and 2.1% and 3.6% at  
148 10.08 nmol/L (T), respectively. Reference ranges at our laboratory are as follows: LH < 1  
149 (prepubertal) and 1.8–8.16 mUI/mL (adults); FSH < 1 (prepubertal) and 1.39–0.58 mUI/mL  
150 (adults); T < 3.2 (prepubertal) and 10.4–38.2 nmol/L (adults); and SHBG of 11.2–79.1 nmol/L.  
151 We employed Vermeulen’s formula to calculate the free T concentrations (cfT) from T and  
152 SHBG levels using a fixed albumin level of 4.3 g/dL (22) and derived the T/LH and cfT/LH  
153 ratios.

### 154 **CEUS**

155 US examinations were performed using an iU22 unit (Philips, Bothell, Wash) with compound  
156 spatial and pulse inversion imaging and a 7–15-MHz wide-band linear probe. Axial and  
157 transverse scans of the testis were obtained based on scanning protocols used by Dogra et al  
158 (23) and Oyen (24). Representative images and loops were stored in the picture archiving and  
159 communication system for subsequent analysis. Testicular US was performed by two

160 experienced sonographers with expertise in urogenital US and qualified in the use of CEUS  
161 (A.M.I. and C.P., both with >15 years of experience). All CEUS scans were obtained using the  
162 same machine with a low mechanical index (mechanical index = 0.07). Patients received  
163 intravenous injection of a 2.4-mL bolus (5 mg/mL) containing contrast material (SonoVue;  
164 Bracco, Milan, Italy), with a very rapid infusion, immediately followed by 10 mL of saline.  
165 Perfusion analyses were conducted using the quantification software QLAB (Philips). Curves  
166 were obtained by manually placing a region of interest (ROI) to entirely cover the testis,  
167 carefully excluding the lesion in the control group. ROIs did not change during the entire clip.  
168 Quantitative perfusion parameters were obtained using the gamma variate fit specifically  
169 designed for the analysis of perfusion imaging using microbubble agents; the function  
170 describes the overall transition of intensity value change during a contrast examination, starting  
171 with dark images, shortly followed by a steep increase in the early phase (wash-in) and  
172 enhancement with slow decrease over time at the end of the curve. The analyzed kinetic  
173 parameters included wash-in time ( $T_{in}$ , in seconds), coefficient of the wash-in slope ( $Slope_{in}$ ,  
174 in dB/second), peak intensity (PI, in dB), time to peak (TTP, in seconds), mean transit time  
175 (MTT, in seconds), time of washout 50% ( $T_{out\ 50\%}$ , in seconds), and area under the curve (AUC,  
176 in arbitrary units) (**Figure 1**). The Microvascular Imaging (MVI) plug-in for measuring  
177 changes in the image from frame to frame, suppressing background tissue signals, and  
178 capturing additional contrast data was employed to dramatically enhance vessel conspicuity  
179 and map contrast agent progression.

## 180 **Statistical analysis**

181 Data were expressed as means (M) and standard deviations or medians (m) and 25%–75%  
182 interquartile ranges (IQRs), as appropriate. Data distribution was visually inspected by  
183 analyzing the respective histograms and normality plots. The normally distributed data were  
184 analyzed with independent samples *t*-tests. The non-normally distributed data were analyzed



185 using Mann–Whitney  $U$  tests and linear regression, using bootstrapping for 2000 samples and  
186 bias corrected accelerated (BCa) 95% confidence intervals. Spearman’s correlation coefficient  
187 ( $r_s$ ) was used for correlation analyses of non-normally distributed data. The level of statistical  
188 significance was set at a  $P$ -value of  $< 0.05$ . Data were visually represented with box-whisker  
189 plots as  $m$  (black lines), 25%–75% IQR (boxes), and 2.5–97.5th percentiles (whiskers). A  
190 principal component analysis (PCA) was used to reveal the internal structure of CEUS kinetic  
191 parameters ( $T_{in}$ ,  $Slope_{in}$ ,  $PI$ ,  $TTP$ ,  $MTT$ ,  $T_{out\ 50\%}$  and  $AUC$ ) through the impartial extraction of a  
192 number of uncorrelated parameters, called principal components (PCs), to retain most of the  
193 information present in the original data. All statistical computations were conducted with the  
194 IBM SPSS Statistics for Windows (version 25, IBM Corp.) and GraphPad Prism for Windows  
195 (version 8.3.0, GraphPad Software, LLC).  
196

## 197 **RESULTS**

198 Age, testicular volumes, endocrine function, and CEUS parameters of patients with KS and  
199 age-matched control subjects are presented in **Table 1**.

200 As expected, compared with the CNT group, subjects with KS presented significantly reduced  
201 testicular volumes ( $p < 0.001$ ), higher gonadotropin levels ( $p < 0.001$  for both LH and FSH),  
202 and reduced serum T levels ( $p = 0.02$ ) as well as both T/LH and cfT/LH ratios ( $p < 0.001$  for  
203 both) but similar SHBG and cfT levels. Specifically, of the 10 enrolled subjects with KS, four  
204 were hypoandrogenemic (T levels  $< 10.4$  nmol/L), whereas the remaining six individuals  
205 presented T levels within the reference range.

### 206 **CEUS parameters of testicular parenchymal vascularization**

207 The analysis of CEUS parameters showed slower testicular perfusion kinetics in subjects with  
208 KS than in the age-matched CNT group. Specifically, there was a significantly longer wash-in  
209 phase of contrast microbubbles and mean testicular transit time, as evidenced by slower  $T_{in}$  ( $p$   
210  $= 0.008$ ), MTT ( $p = 0.008$ ), and TTP ( $p < 0.001$ ) intervals. The washout phase was also  
211 significantly slower, with a prolonged  $T_{out\ 50\%}$  ( $p = 0.008$ ). No significant differences were  
212 observed with regard to the Slope<sub>in</sub>, PI, or AUC. Vascular kinetics are presented in **Figure 2**,  
213 which depicts a representative examination in a patient with KS (upper panels) and CNT  
214 subject (lower panels), alongside perfusion curves (subject with KS in red and CNT subject in  
215 light blue).

216 MVI depiction of the differences between a KS testis (left) and CNT testis (right) is displayed  
217 in **Figure 3**: at 30 seconds (panel B), the vascular architecture of the CNT testis is already  
218 apparent with an organized and regular pattern, whereas the KS testis vessels are only  
219 visualized at 45 seconds (panel D), showing an irregular and chaotic vascular pattern.

### 220 **Correlation analyses of testicular vascularization and endocrine function**

221 A correlation analysis among age, testicular volume (of the examined testis), and CEUS  
222 parameters showed no significant associations (data not shown), except for TTP, which showed  
223 a positive correlation with age ( $r_s = 0.31$ ,  $p = 0.046$ ) and testicular volume ( $r_s = -0.38$ ,  $p =$   
224  $0.003$ ).

225 To examine the interrelationship between testicular vascular parameters assessed by CEUS and  
226 testicular endocrine function, we further conducted a correlation analysis in subjects with KS  
227 and CNT. Complete results are summarized in **Table 2**.

228 Among the hormonal parameters considered, serum T levels showed the strongest relationship  
229 with vascular parameters, correlating positively with Slope<sub>in</sub> ( $p = 0.048$ ) and inversely with T<sub>in</sub>  
230 ( $p = 0.003$ ), MTT ( $p < 0.001$ ), TTP ( $p = 0.023$ ), and T<sub>out.50%</sub> ( $p = 0.038$ ). These parameters  
231 (except Slope<sub>in</sub>) were deemed significantly different between the KS and CNT groups.  
232 Opposite significances were found for LH and FSH levels solely with the TTP. Serum cT  
233 levels were inversely correlated with PI and MTT values, whereas the T/LH and fT/LH ratios  
234 were inversely correlated with TTP and the T/LH ratio with MTT).

### 235 **Principal component analysis of CEUS parameters**

236 A PCA was conducted on CEUS kinetic parameters with oblique rotation (direct oblimin). The  
237 Kaiser-Meyer-Olkin measure verified the sampling adequacy for the analysis, KMO = 0.63,  
238 and all KMO values for individual items were greater 0.5. An initial analysis was run to obtain  
239 eigenvalues for each factor in the data. Two components had eigenvalues over Kaiser's criterion  
240 of 1 and in combination explained 88.6% of the variance. The scree plot showed inflexion that  
241 justified retaining two components. The first PC (PC1) comprised the following loadings: T<sub>in</sub>  
242 (0.98), Slope<sub>in</sub> (-0.516), TTP (0.793), MTT (0.952) and T<sub>out 50%</sub> (0.793); this PC showed an  
243 eigenvalue of 3.76 and explained 53.8% of the total variance. The second PC (PC2) comprised  
244 the following loadings: Slope<sub>in</sub> (0.881), PI (0.967) and AUC (0.830); this PC showed an  
245 eigenvalue of 2.44 and explained 34.8% of the total variance. The items that cluster on the

246 same component suggest that PC1 represents time-dependent behaviour, while PC2 represents  
247 intensity-dependent behaviour.

### 248 **Multiple regression analysis of PCs and total T levels**

249 A multiple linear regression analysis was conducted to determine whether vascular parameters  
250 were able to independently predict total T levels in KS and CNT subjects; complete results are  
251 reported in **Table 3**. Total T levels were predicted positively by bitesticular volume ( $p = 0.017$ )  
252 and negatively by PC1 ( $p = 0.04$ ); age and PC2 were not found to be significant predictors.

253

254

## 255 **DISCUSSION**

256 The presence of increased cardiovascular risk in KS is a well-established fact and has been  
257 documented in population studies, which have described an increase in morbidity and mortality  
258 (1,2). The contributing factors are less known, and although T probably plays a role as a  
259 vasodilator, with an apparent protective effect with regard to atherogenesis (25), the aneuploidy  
260 condition per se seems to be involved. This consideration occurs owing to the higher incidence  
261 of congenital heart malformations (2) and the finding of reduced luminal diameter of the main  
262 arteries in subjects with KS, independent of T levels or gonadal status (8). Whether these  
263 anomalies extend to testicular vasculature or whether testicular function is affected is a matter  
264 of debate.

265 Although a Doppler US study initially described high-resistance intratesticular blood flow in  
266 subjects with KS (26), significant findings were obtained in 2014 from a preliminary report  
267 describing surprisingly increased ITT levels in subjects with KS compared with healthy  
268 controls (almost 10 times higher) (13). This result prompted authors to search for a possible  
269 explanation to this phenomenon, discarding the idea of impaired Leydig cell function in KS.  
270 The histological finding of a low blood vessel/testis surface ratio in a mouse model of KS led

271 to the hypothesis that T release, rather than its production, is actually impaired in KS, by means  
272 of a slower and reduced testicular blood flow. These results were confirmed in a subsequent  
273 study, in which a reduction in small and medium-sized blood vessels in adult 41,XX<sup>Y\*</sup> mice  
274 was described, and the CEUS study of those testes demonstrated reduced perfusion parameters,  
275 favoring impaired testicular vascularization in KS (14). However, these results were  
276 inconsistent with the findings of another histological study in human KS testicular biopsies  
277 from prepubertal, peripubertal, and adult subjects (15).

278 The present study examined for the first time *in vivo* testicular vascularization in human  
279 subjects with KS by means of CEUS compared with age-matched controls. Subjects with KS  
280 were characterized by significantly slower testicular perfusion kinetics, in both the wash-in and  
281 washout phases (**Figure 2**), resulting in prolonged testicular MTT; the testicular Slope<sub>in</sub> was  
282 not significantly different between the two groups, possibly because of the lack of differences  
283 in the number of larger arteries (14), in which microbubbles first appear; the PI and AUC were  
284 also not different between the two groups.

285 Strikingly, faster testicular vascularization times were associated with better endocrine  
286 testicular function, especially with serum T levels, which showed a strong relationship with  
287 vascular parameters, correlating positively with Slope<sub>in</sub> and inversely with T<sub>in</sub>, MTT, TTP, and  
288 T<sub>out.50%</sub> as well as gonadotropins and T/LH and cT/LH ratios. Using MVI analysis, we  
289 observed vessel conspicuity during contrast agent progression and noted the normal vascular  
290 architecture of CNT compared with subjects with KS, in whom small vessels were not clearly  
291 seen.

292 To assess the individual contribution of vascular flow on total T levels we first performed a  
293 PCA on CEUS parameters in KS and CNT subjects: two PCs were identified, namely PC1,  
294 representing time-dependent behaviour and mostly indicative of venous blood flow, and PC2,  
295 representing intensity-dependent behaviour, mainly attributable to large arteries blood flow

296 (27). Of note, PC1 was constituted by the same CEUS parameters upon which KS subjects  
297 significantly differed from the CNT cohort. We subsequently proceeded to conduct a multiple  
298 linear regression analysis to verify the independent role of vascular blood flow on testicular  
299 endocrine function, which showed venous blood flow (PC1) and bitesticular volume to be  
300 independent predictors of total T levels.

301 To our knowledge, this is the first demonstration that altered intratesticular vasculature  
302 correlates with altered peripheral hormonal release. If the feedback loop is indeed intact, an  
303 inefficient hormone release in the circulation could be masked by an increase in LH, stretching  
304 the hypothalamic–pituitary–testicular axis to the maximum but still resulting in lower  
305 circulating T levels. Therefore, the higher ITT/T ratio observed in KS, according to the data  
306 published by Tuttelmann et al. (13), would not be a sign of Leydig cell failure but a sign of  
307 failure of the interaction between the T source and distribution system. PCA and linear  
308 regression analyses further point towards a role for reduced venous blood flow in regulating T  
309 release from the testes.

310 Our study has some limitations. First, the sample size and age distribution of enrolled men with  
311 KS are small, resulting in 17 testes from adolescents and adults; however, this is in line with  
312 the preliminary nature of our study. Second, as a control group, we included subjects  
313 undergoing CEUS because of nonpalpable lesions of < 0.5-cm diameter which were benign at  
314 definitive histological evaluation. Therefore, we do not expect testicular parenchymal  
315 vascularization to be affected in these men, although this possibility cannot be completely  
316 excluded.

317 Lastly, kinetic parameters depend on the manufacturer of the US unit, and although our  
318 software provides automatic time–intensity curves measurements, it is possible that analyses  
319 conducted using different software on other US systems provide different values.

320 Further studies are warranted to evaluate testicular KS vascularization in the prepubertal and  
321 peripubertal timing, establish whether vascular abnormalities are already present at an earlier  
322 stage, and determine whether vascular dynamics can be useful in predicting the “testicular  
323 catastrophe” occurring in KS and scheduling TESE.

324 In conclusion, our study provides the first demonstration of impaired testicular vascularization  
325 kinetics in men with KS. These alterations are possibly related to T release in the peripheral  
326 circulation.

327

## 328 Bibliography

- 329 1. Swerdlow AJ, Higgins CD, Schoemaker MJ, Wright AF, Jacobs PA, United Kingdom  
330 Clinical Cytogenetics G. Mortality in patients with Klinefelter syndrome in Britain: a  
331 cohort study. *J Clin Endocrinol Metab.* 2005;90(12):6516-6522.
- 332 2. Bojesen A, Juul S, Birkebaek NH, Gravholt CH. Morbidity in Klinefelter syndrome: a  
333 Danish register study based on hospital discharge diagnoses. *J Clin Endocrinol Metab.*  
334 2006;91(4):1254-1260.
- 335 3. Fricke GR, Mattern HJ, Schweikert HU. Mitral valve prolapse in Klinefelter syndrome.  
336 *Lancet.* 1981;2(8260-61):1414.
- 337 4. Fricke GR, Mattern HJ, Schweikert HU, Schwanitz G. Klinefelter's syndrome and  
338 mitral valve prolapse. an echocardiographic study in twenty-two patients. *Biomed*  
339 *Pharmacother.* 1984;38(2):88-97.
- 340 5. Andersen NH, Bojesen A, Kristensen K, Birkebaek NH, Fedder J, Bennett P,  
341 Christiansen JS, Gravholt CH. Left ventricular dysfunction in Klinefelter syndrome is  
342 associated to insulin resistance, abdominal adiposity and hypogonadism. *Clin*  
343 *Endocrinol (Oxf).* 2008;69(5):785-791.
- 344 6. Pasquali D, Arcopinto M, Renzullo A, Rotondi M, Accardo G, Salzano A, Esposito D,  
345 Saldamarco L, Isidori AM, Marra AM, Ruvolo A, Napoli R, Bossone E, Lenzi A,  
346 Baliga RR, Sacca L, Cittadini A. Cardiovascular abnormalities in Klinefelter syndrome.  
347 *Int J Cardiol.* 2013;168(2):754-759.
- 348 7. Jorgensen IN, Skakkebaek A, Andersen NH, Pedersen LN, Hougaard DM, Bojesen A,  
349 Trolle C, Gravholt CH. Short QTc interval in males with klinefelter syndrome-  
350 influence of CAG repeat length, body composition, and testosterone replacement  
351 therapy. *Pacing Clin Electrophysiol.* 2015;38(4):472-482.
- 352 8. Foresta C, Caretta N, Palego P, Ferlin A, Zuccarello D, Lenzi A, Selice R. Reduced  
353 artery diameters in Klinefelter syndrome. *Int J Androl.* 2012;35(5):720-725.
- 354 9. Duijnhouwer AL, Bons LR, Timmers H, van Kimmenade RRL, Snoeren M,  
355 Timmermans J, van den Hoven AT, Kempers M, van Dijk APJ, Fleischer K, Roos-  
356 Hesselink JW. Aortic dilatation and outcome in women with Turner syndrome. *Heart.*  
357 2019;105(9):693-700.
- 358 10. Swerdlow AJ, Laing SP, Qiao Z, Slater SD, Burden AC, Botha JL, Waugh NR, Morris  
359 AD, Gatling W, Gale EA, Patterson CC, Keen H. Cancer incidence and mortality in  
360 patients with insulin-treated diabetes: a UK cohort study. *Br J Cancer.*  
361 2005;92(11):2070-2075.
- 362 11. Zoller B, Ji J, Sundquist J, Sundquist K. High Risk of Venous Thromboembolism in  
363 Klinefelter Syndrome. *J Am Heart Assoc.* 2016;5(5).
- 364 12. Aksglaede L, Skakkebaek NE, Almstrup K, Juul A. Clinical and biological parameters  
365 in 166 boys, adolescents and adults with nonmosaic Klinefelter syndrome: a  
366 Copenhagen experience. *Acta Paediatr.* 2011;100(6):793-806.
- 367 13. Tuttmann F, Damm OS, Luetjens CM, Baldi M, Zitzmann M, Kliesch S, Nieschlag  
368 E, Gromoll J, Wistuba J, Simoni M. Intratesticular testosterone is increased in men with  
369 Klinefelter syndrome and may not be released into the bloodstream owing to altered  
370 testicular vascularization- a preliminary report. *Andrology.* 2014;2(2):275-281.
- 371 14. Wistuba J, Beumer C, Warmeling AS, Sandhowe-Klaverkamp R, Stypmann J,  
372 Kuhlmann M, Holtmeier R, Damm OS, Tuttmann F, Gromoll J. Testicular blood  
373 supply is altered in the 41,XX(Y)\* Klinefelter syndrome mouse model. *Sci Rep.*  
374 2020;10(1):14369.



- 375 15. Willems M, Vloeberghs V, Gies I, De Schepper J, Tournaye H, Goossens E, Van Saen  
376 D. Testicular immune cells and vasculature in Klinefelter syndrome from childhood up  
377 to adulthood. *Hum Reprod.* 2020;35(8):1753-1764.
- 378 16. Bruce M, Averkiou M, Tiemann K, Lohmaier S, Powers J, Beach K. Vascular flow and  
379 perfusion imaging with ultrasound contrast agents. *Ultrasound Med Biol.*  
380 2004;30(6):735-743.
- 381 17. Faccioli N, Dietrich CF, Foti G, Santi E, Comai A, D'Onofrio M. Activity-Based Cost  
382 Analysis of Including Contrast-Enhanced Ultrasound (CEUS) in the Diagnostic  
383 Pathway of Focal Pancreatic Lesions Detected by Abdominal Ultrasound. *Ultraschall*  
384 *Med.* 2019;40(5):618-624.
- 385 18. Tanaka H, Iijima H, Nouse K, Aoki N, Iwai T, Takashima T, Sakai Y, Aizawa N, Iwata  
386 K, Ikeda N, Iwata Y, Enomoto H, Saito M, Imanishi H, Nishiguchi S. Cost-  
387 effectiveness analysis on the surveillance for hepatocellular carcinoma in liver cirrhosis  
388 patients using contrast-enhanced ultrasonography. *Hepatol Res.* 2012;42(4):376-384.
- 389 19. Cantisani V, Bertolotto M, Weskott HP, Romanini L, Grazhdani H, Passamonti M,  
390 Drudi FM, Malpassini F, Isidori A, Meloni FM, Calliada F, D'Ambrosio F. Growing  
391 indications for CEUS: The kidney, testis, lymph nodes, thyroid, prostate, and small  
392 bowel. *Eur J Radiol.* 2015;84(9):1675-1684.
- 393 20. Appis AW, Tracy MJ, Feinstein SB. Update on the safety and efficacy of commercial  
394 ultrasound contrast agents in cardiac applications. *Echo Res Pract.* 2015;2(2):R55-62.
- 395 21. Isidori AM, Pozza C, Gianfrilli D, Giannetta E, Lemma A, Pofi R, Barbagallo F,  
396 Manganaro L, Martino G, Lombardo F, Cantisani V, Franco G, Lenzi A. Differential  
397 diagnosis of nonpalpable testicular lesions: qualitative and quantitative contrast-  
398 enhanced US of benign and malignant testicular tumors. *Radiology.* 2014;273(2):606-  
399 618.
- 400 22. Vermeulen A, Verdonck L, Kaufman JM. A critical evaluation of simple methods for  
401 the estimation of free testosterone in serum. *J Clin Endocrinol Metab.*  
402 1999;84(10):3666-3672.
- 403 23. Dogra VS, Rubens DJ, Gottlieb RH, Bhatt S. Torsion and beyond: new twists in spectral  
404 Doppler evaluation of the scrotum. *J Ultrasound Med.* 2004;23(8):1077-1085.
- 405 24. Oyen RH. Scrotal ultrasound. *Eur Radiol.* 2002;12(1):19-34.
- 406 25. Kelly DM, Jones TH. Testosterone: a vascular hormone in health and disease. *J*  
407 *Endocrinol.* 2013;217(3):R47-71.
- 408 26. Ekerhovd E, Westlander G. Testicular sonography in men with Klinefelter syndrome  
409 shows irregular echogenicity and blood flow of high resistance. *J Assist Reprod Genet.*  
410 2002;19(11):517-522.
- 411 27. Butler M, Perperidis A, Zahra JM, Silva N, Averkiou M, Duncan WC, McNeilly A,  
412 Sboros V. Differentiation of Vascular Characteristics Using Contrast-Enhanced  
413 Ultrasound Imaging. *Ultrasound Med Biol.* 2019;45(9):2444-2455.

414

415

416 **Figure legends**

417

418 **Figure 1. Graphic representation of the time/intensity curve and calculated perfusion**

419 **parameters:** *wash-in time (W-in)*, the time when the testis first started to enhance, measured  
420 in seconds; *time to peak (TTP)*, the time needed to reach the peak intensity, measured in  
421 seconds; *mean transit time (MTT)*, the time difference between the time needed to reach the  
422 peak intensity and the time of the start of the enhancement for the ROI, measured in seconds;  
423 *peak intensity (PI)*, the maximum enhancement of the ROI, measured in decibel (dB); washout  
424 *time (T-out)*, the time difference between the respective 50% peak intensity values in the  
425 washout and peak intensity value, measured in seconds; *area under the curve (AUC)*, intensities  
426 of the whole period of enhancement, measured in arbitrary units; *Slope in*, the coefficient of  
427 the wash-in slope and reflects the mean blood flow velocity in the region of interest, measured  
428 in in dB/second.

429

430 **Figure 2. Quantitative contrast-enhanced US of a KS testis (upper panels) and a CNT testis**

431 (lower panels). Contrast pulse inversion harmonic time–intensity curves of the KS testis (in  
432 red) and the CNT testis (in light blue) show a slower  $T_{in}$  and TTP and longer MTT and  $T_{out\ 50\%}$   
433 in the KS testis than in the CNT testis.

434

435 **Figure 3. Microvascular Imaging (MVI) frames of KS testis (left) and CNT testis (right) at 20**

436 (panel A), 30 (panel B), 45 (panel C) and 90 seconds (panel D) after contrast injection clearly  
437 show the different behavior of intratesticular vessels. At 30 seconds, the CNT testis is already  
438 filled with Sonovue, its vascular architecture is clearly identified, and the progression is  
439 organized and regular; conversely, KS testis vessels are visualized at 45 seconds, and at the  
440 end of the examination, the map shows irregular and chaotic vascularization.

**Table 1.** General, hormonal, and CEUS data of the testes of subjects with KS and age-matched healthy controls (m [25%–75% IQR])

	KS subjects	Healthy controls	<i>P</i>
n	10	34	
Testes	17	34	
Age, years*	31.7 ± 12.04	31.6 ± 6.29	0.82
Testicular volume, mL#	3.5 (2.9–3.7)	17.1 (14.4–21.2)	<b>&lt;0.001</b>
<b>Endocrine function</b>			
LH, mUI/mL	12.03 (10.58–16.46)	2.9 (2.25–3.69)	<b>&lt;0.001</b>
FSH, mUI/mL	29.12 (22.66–38.53)	3.15 (1.64–5.69)	<b>&lt;0.001</b>
T, nmol/L	13.24 (10.92–18.2)	21.47 (17.49–25.36)	<b>0.02</b>
SHBG, nmol/L	35.4 (30.85–42.25)	42.3 (29.95–56.1)	0.29
cfT, nmol/L	0.35 (0.16–0.42)	0.41 (0.34–0.47)	0.154
T/LH ratio	1.14 (0.59–1.5)	7.01 (4.94–10.2)	<b>&lt;0.001</b>
cfT/LH ratio	0.03 (0.01–0.04)	0.15 (0.1–0.2)	<b>&lt;0.001</b>
<b>CEUS parameters</b>			
T <sub>in</sub> , seconds	9.36 (7.54–12.73)	7.42 (5.45–8.82)	<b>0.008</b>
Slope <sub>in</sub>	0.25 (0.17–0.4)	0.28 (0.22–0.42)	0.441
PI, dB	2.86 (2.02–3.65)	2.41 (1.77–3.22)	0.184
MTT, seconds	11.8 (10.66–17.53)	10.46 (8.21–12.75)	<b>0.008</b>
TTP, seconds	42.3(37.85–50.47)	35 (26.8–38.54)	<b>&lt;0.001</b>
T <sub>out 50%</sub> , seconds	31.51 (21.93–38.76)	23.41 (16.92–29.95)	<b>0.008</b>
AUC	116.85 (94.26–158.71)	94.48 (58.41–156.59)	0.129

*Note:* Parameters marked by \* show a normal distribution, are presented as mean ± standard deviation, and have been tested via independent samples *t*-test. # Volume of testes that underwent CEUS examination are reported. Significant *P*-values are presented in bold.

Abbreviations: **KS**, Klinefelter syndrome; **CEUS**, contrast-enhanced ultrasonography, **T<sub>in</sub>**, wash-in time (in seconds); **Slope<sub>in</sub>**, coefficient of the wash-in slope (in dB/second); **PI**, peak intensity (in dB); **MTT**, mean transit time (in seconds); **TTP**, time to peak (in seconds); **T<sub>out 50%</sub>**, time difference between the PI value and 50% of the PI value in the wash-out (in seconds); **AUC**, area under the curve (in arbitrary units)

**Table 2.** Spearman correlation coefficients between CEUS-derived testicular vascular parameters and endocrine function in subjects with KS and healthy control subjects

	<b>T<sub>in</sub></b>	<b>Slope<sub>in</sub></b>	<b>PI</b>	<b>MTT</b>	<b>TTP</b>	<b>T<sub>out 50%</sub></b>	<b>AUC</b>
Testes, n	51	51	51	51	51	51	51
<b>LH</b> , mUI/mL	0.19	0.05	0.22	0.20	<b>0.41</b>	0.22	0.17
Sig, <i>p</i>	0.25	0.76	0.17	0.21	<b>0.008</b>	0.18	0.28
<b>FSH</b> , mUI/mL	0.27	-0.05	0.14	0.3	<b>0.45</b>	0.25	0.14
Sig, <i>p</i>	0.1	0.75	0.4	0.07	<b>0.004</b>	0.13	0.39
<b>T</b> , nmol/L	<b>-0.46</b>	<b>0.32</b>	0.09	<b>-0.52</b>	<b>-0.360</b>	<b>-0.33</b>	0.05
Sig, <i>p</i>	<b>0.003</b>	<b>0.048</b>	0.58	<b>&lt;0.001</b>	<b>0.023</b>	<b>0.038</b>	0.76
<b>SHBG</b> , nmol/L	-0.21	0.27	0.1	-0.22	-0.28	-0.2	0.04
Sig, <i>p</i>	0.29	0.16	0.58	0.26	0.15	0.31	0.83
<b>cfT</b> , nmol/L	-0.31	-0.16	<b>-0.39</b>	<b>-0.4</b>	-0.21	-0.1	-0.29
Sig, <i>p</i>	0.11	0.43	<b>0.04</b>	<b>0.04</b>	0.3	0.63	0.15
<b>T/LH ratio</b>	-0.31	0.08	-0.14	<b>-0.35</b>	<b>-0.42</b>	-0.28	-0.11
Sig, <i>p</i>	0.052	0.62	0.39	<b>0.029</b>	<b>0.008</b>	0.08	0.51
<b>cfT/LH ratio</b>	-0.33	-0.16	-0.48	-0.38	<b>-0.48</b>	-0.23	-0.35
Sig, <i>p</i>	0.1	0.41	0.012	0.054	<b>0.01</b>	0.24	0.08

*Note: Significant p-values are presented in bold.*

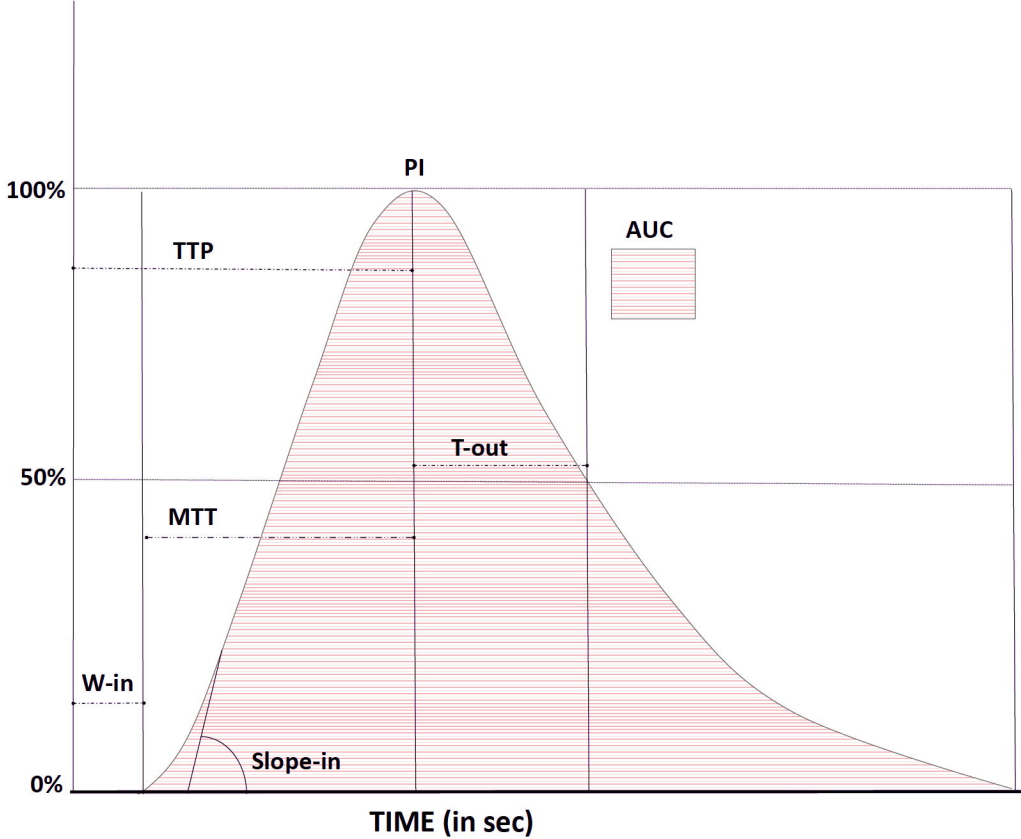
Abbreviations: **KS**, Klinefelter syndrome; **CEUS**, contrast-enhanced ultrasonography; **T<sub>in</sub>**, wash-in time (in seconds); **Slope<sub>in</sub>**, coefficient of the wash-in slope (in dB/second); **PI**, peak intensity (in dB); **MTT**, mean transit time (in seconds); **TTP**, time to peak (in seconds); **T<sub>out 50%</sub>**, time difference between the PI value and 50% of the PI value in the wash-out (in seconds); **AUC**, area under the curve (in arbitrary units)

**Table 3.** Linear model of predictors of total testosterone in KS subjects and healthy controls after bootstrapping.

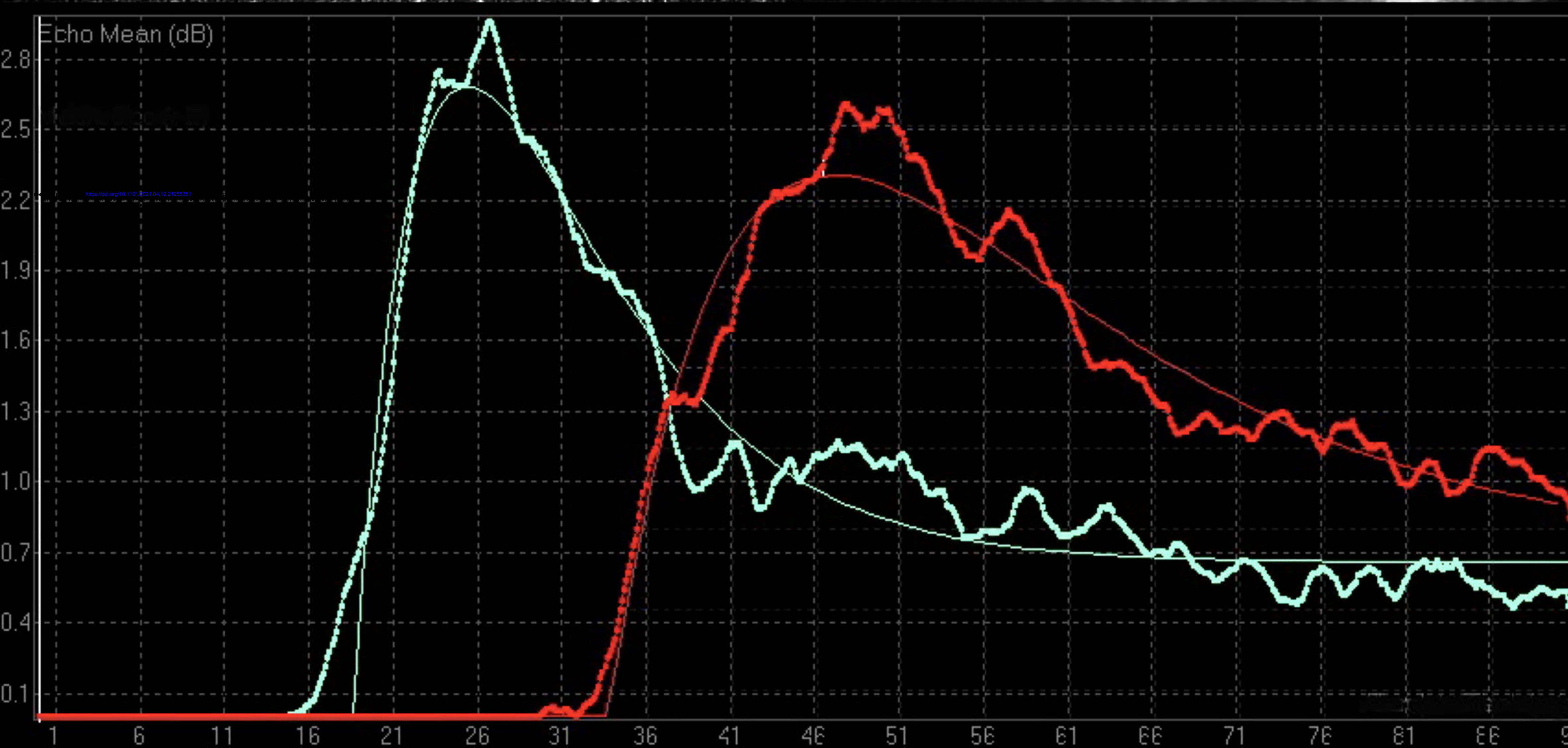
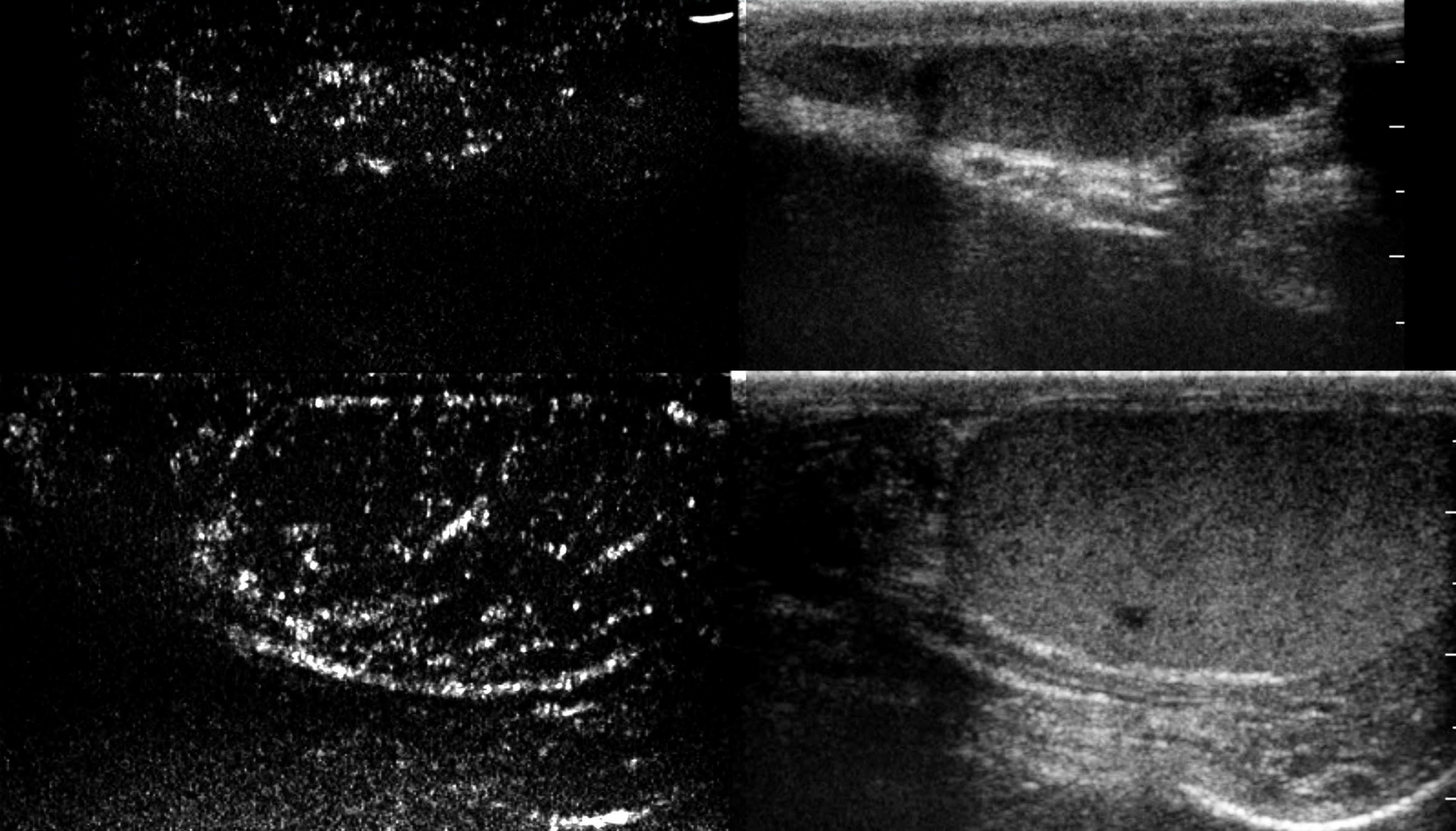
	<i>b</i>	<i>SE</i>	<i>p</i>
<b>Total testosterone, nmol/L</b>			
Constant	12.257 (5.876, 20.237)	4.139	0.006
Age, years	0.107 (-0.15, 0.346)	0.118	0.36
Bitesticular volume, mL	0.174 (0.03, 0.31)	0.067	<b>0.017</b>
PC1	-2.467 (-4.757, -0.1)	1.186	<b>0.04</b>
PC2	0.740 (-1.446, 3.378)	1.267	0.58

*Note:* 95% bias corrected accelerated (Bca) confidence intervals from 2000 bootstrapped samples are reported in parentheses. Significant *P*-values are presented in bold.

Abbreviations: **KS** = Klinefelter syndrome; **PC** = principal component; **SE** = standard error.



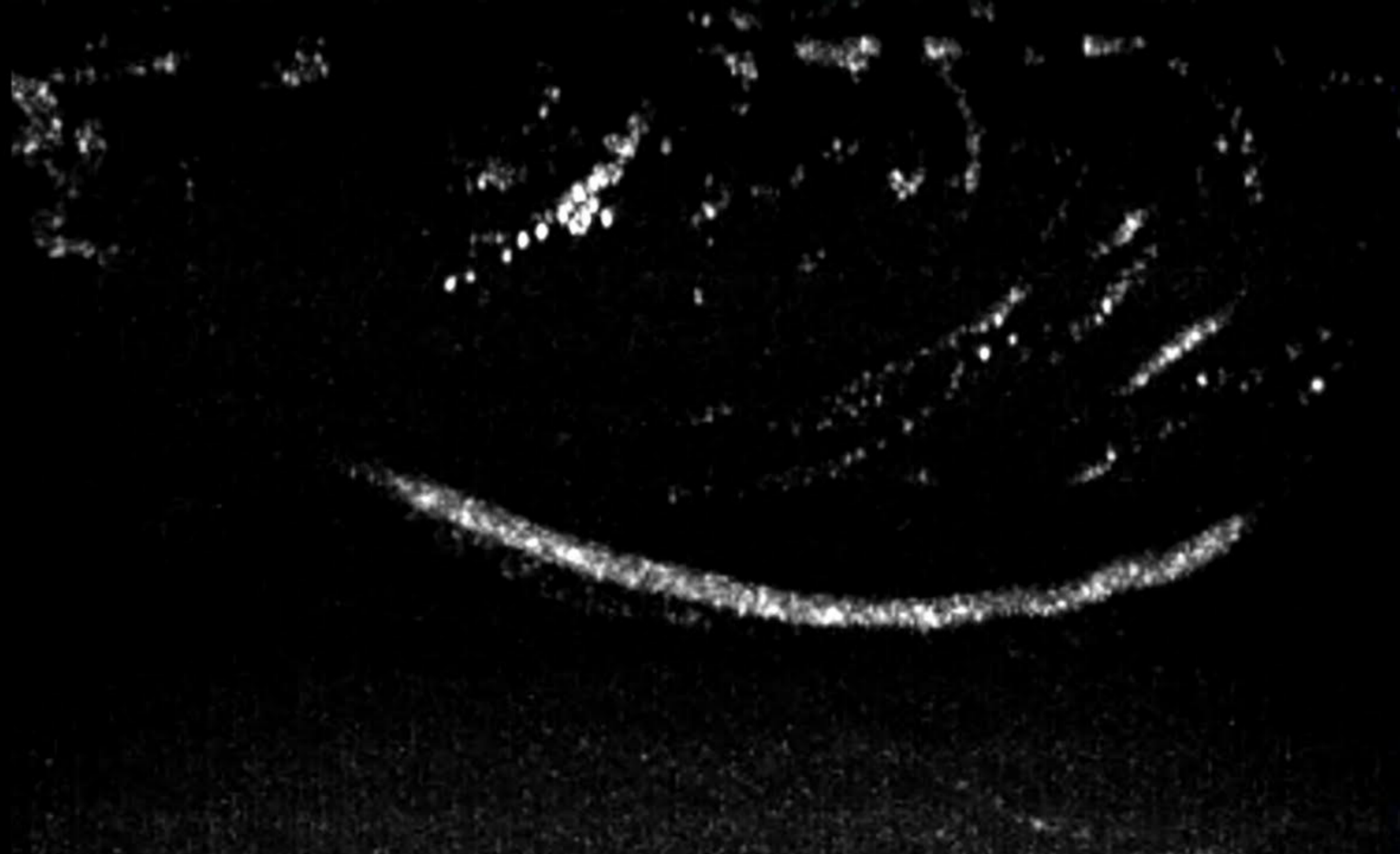




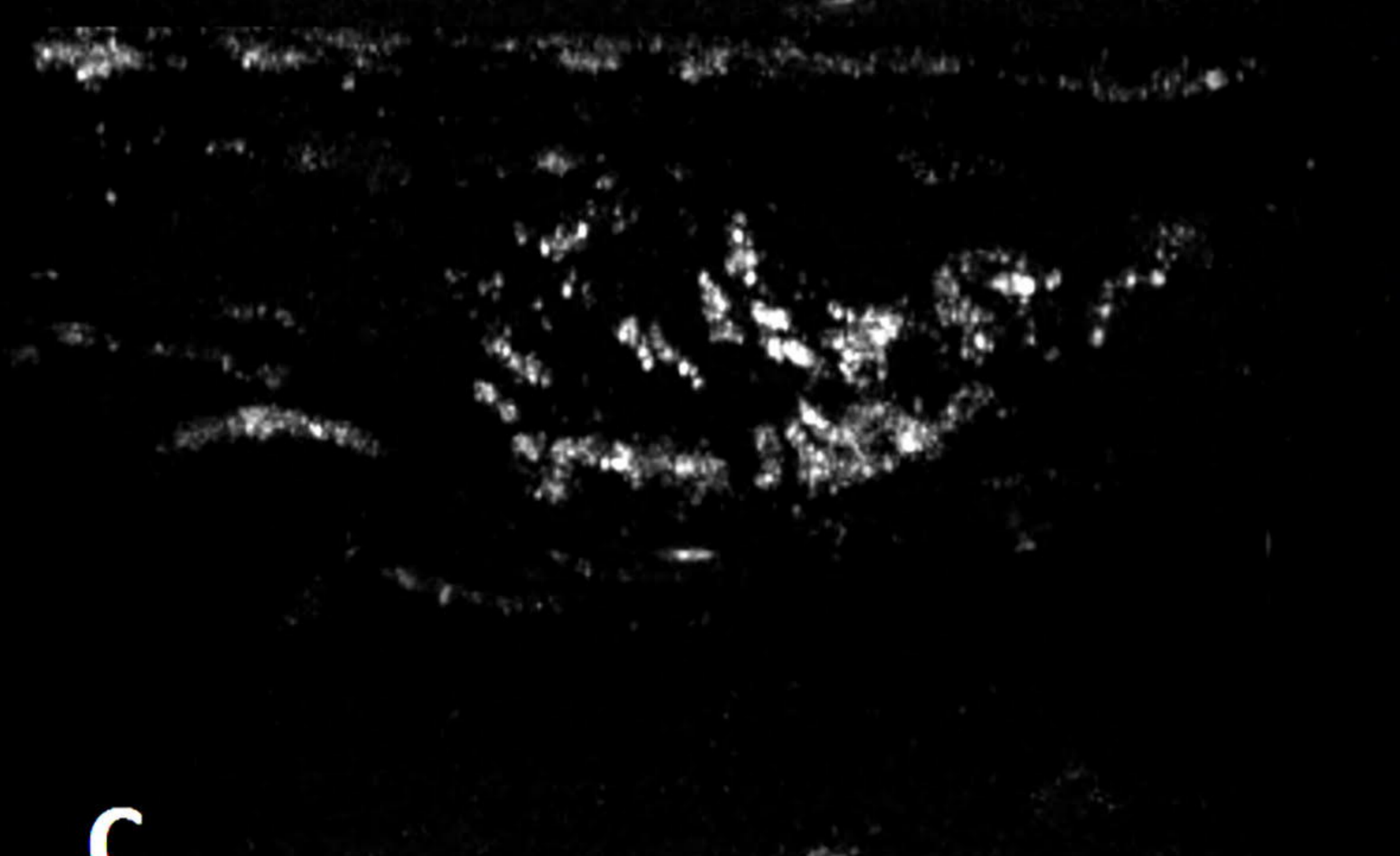
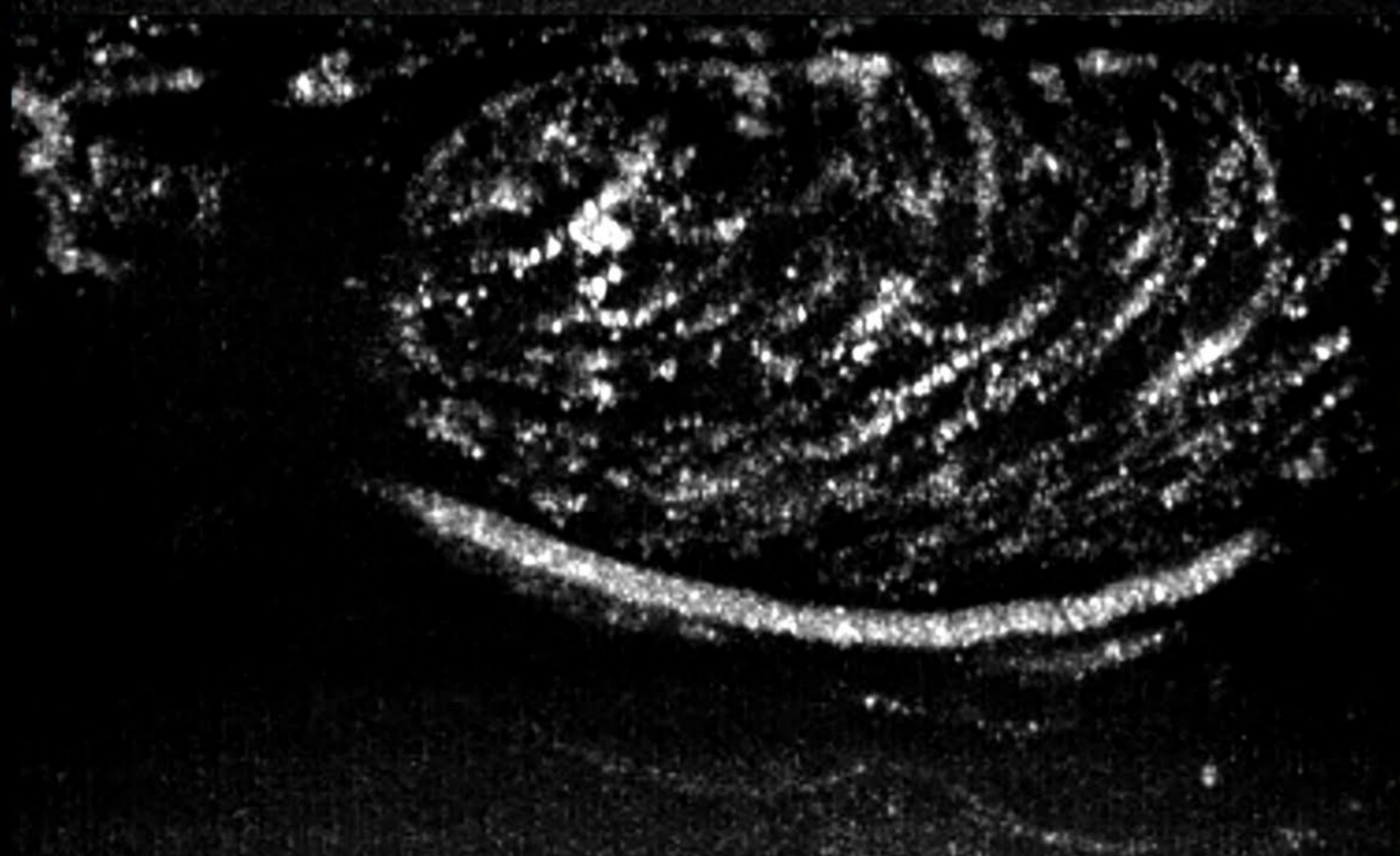




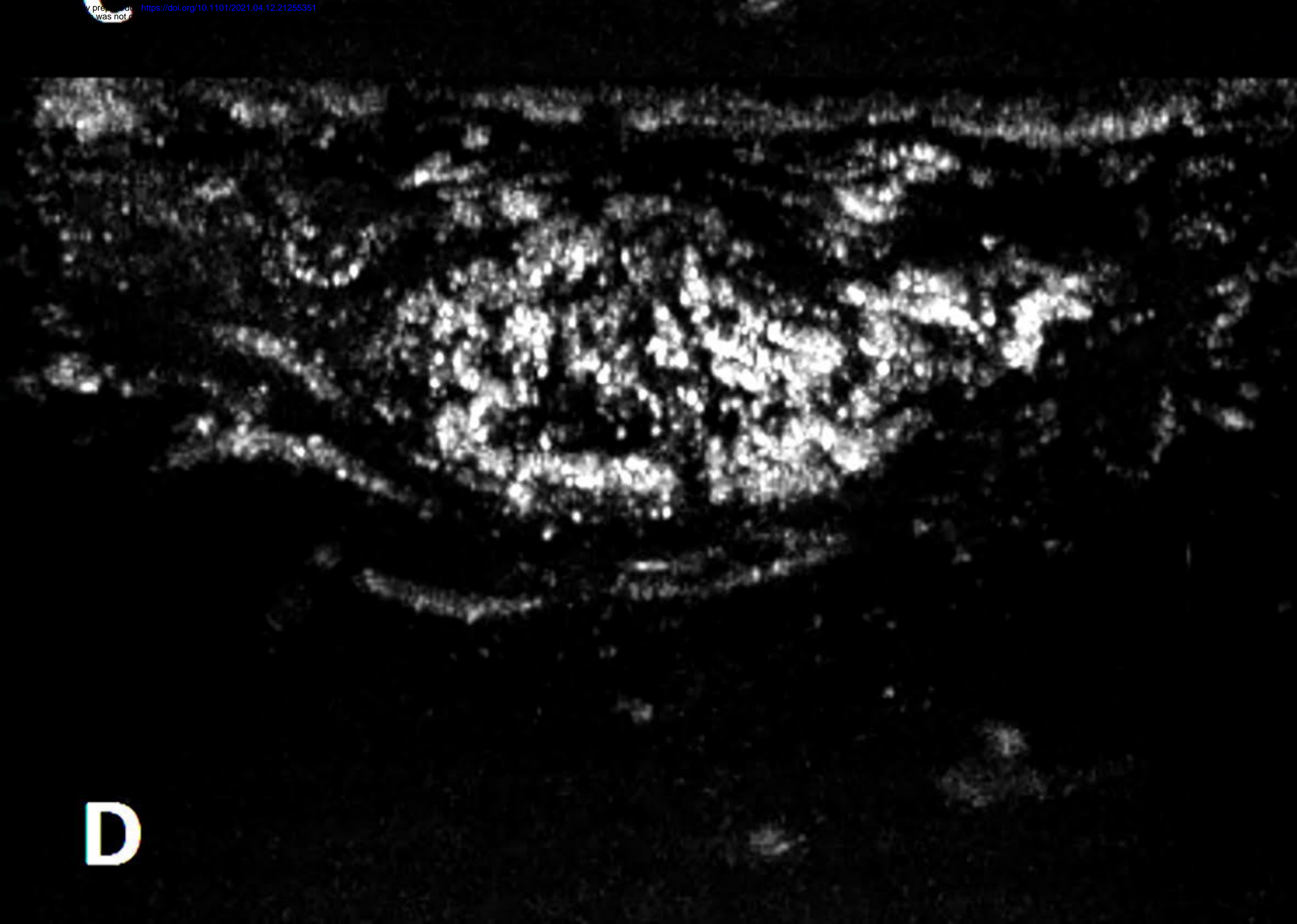
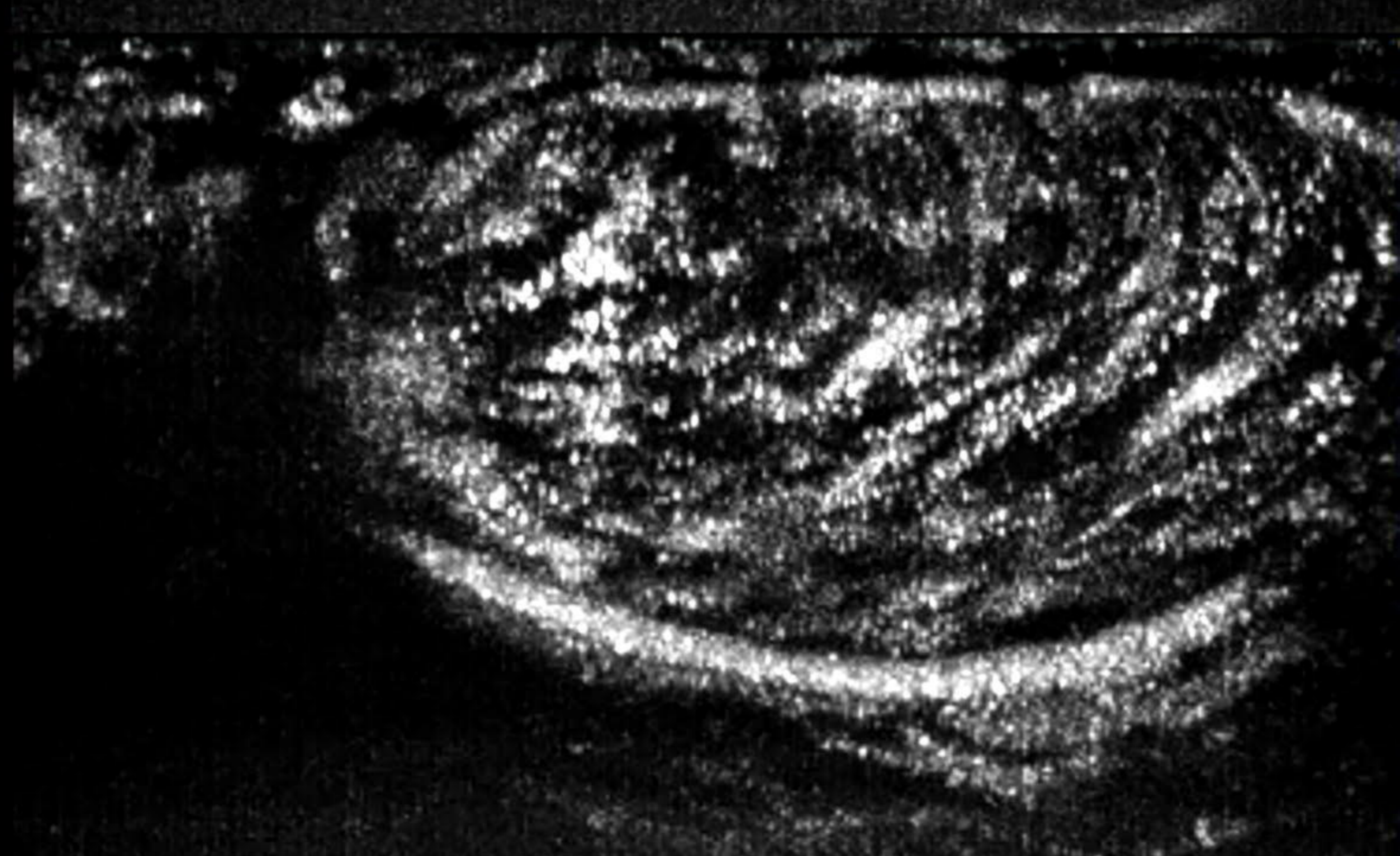
**A**



**B**



**C**



**D**

