

1 **Serological evaluation of a cluster randomised trial on the use of reactive focal mass drug**  
2 **administration and reactive vector control to reduce malaria transmission in Zambezi Region,**  
3 **Namibia**

4  
5 Lindsey Wu<sup>1\*</sup>, Michelle S. Hsiang<sup>2,3,4</sup>, Lisa M. Prach<sup>3</sup>, Leah Schrubbe<sup>3</sup>, Henry Ntuku<sup>3</sup>, Mi-Suk Kang Dufour<sup>5</sup>,  
6 Brooke Whittemore<sup>2</sup>, Valerie Scott<sup>3</sup>, Joy Yala<sup>3</sup>, Kathryn W. Roberts<sup>3</sup>, Catriona Patterson<sup>1</sup>, Joseph Biggs<sup>1</sup>, Tom  
7 Hall<sup>6</sup>, Kevin K.A. Tetteh<sup>1</sup>, Cara Smith Gueye<sup>3</sup>, Bryan Greenhouse<sup>7</sup>, Adam Bennett<sup>3</sup>, Jennifer L. Smith<sup>3</sup>, Stark  
8 Katokele<sup>8</sup>, Petrina Uusiku<sup>8</sup>, Davis Mumbengegwi<sup>9</sup>, Roly Gosling<sup>3</sup>, Chris Drakeley<sup>1</sup>, Immo Kleinschmidt<sup>10,11,12</sup>

9  
10 \*Corresponding author: [lindsey.wu@lshtm.ac.uk](mailto:lindsey.wu@lshtm.ac.uk)

- 11 1. London School of Hygiene and Tropical Medicine, Faculty of Infectious Tropical Diseases, Department of  
12 Infection Biology. London, UK.
- 13 2. Department of Pediatrics, University of Texas Southwestern Medical Center, Dallas, TX, USA
- 14 3. Malaria Elimination Initiative, Global Health Group, University of California San Francisco, San Francisco,  
15 CA, USA
- 16 4. Department of Pediatrics, University of California San Francisco, San Francisco, CA, USA
- 17 5. Division of Prevention Science, University of California San Francisco, San Francisco, CA, USA
- 18 6. St. George's University of London, London, UK
- 19 7. Division of Experimental Medicine, Department of Medicine, University of California San Francisco, San  
20 Francisco, CA, USA
- 21 8. National Vector-Borne Diseases Control Programme, Namibia Ministry of Health and Social Services,  
22 Windhoek, Namibia
- 23 9. Multidisciplinary Research Centre, University of Namibia, Windhoek, Namibia
- 24 10. London School of Hygiene and Tropical Medicine, Faculty of Epidemiology and Population Health,  
25 Department of Infectious Disease Epidemiology. London, UK.
- 26 11. School of Pathology, Wits Institute for Malaria Research, Faculty of Health Science, University of  
27 Witwatersrand, South Africa.
- 28 12. Southern African Development Community Malaria Elimination Eight Secretariat, Windhoek, Namibia.

29

30 Word count: 4,529

31 Key words: malaria, serology, cluster randomised trials

32 **Abstract**

33 Due to challenges in measuring changes in malaria in low transmission settings, serology is  
34 increasingly being used to complement clinical and parasitological surveillance. Longitudinal cohort  
35 studies have shown serological markers, such as Etramp5.Ag1, to be particularly discriminatory of  
36 spatio-temporal differences in malaria transmission. However, these markers have yet to be used as  
37 endpoints in intervention trials. This study is an extended analysis of a 2017 cluster randomised trial  
38 conducted in Zambezi Region, Namibia, evaluating the effectiveness of reactive focal mass drug  
39 administration (rfMDA) and reactive vector control (RAVC). A panel of eight serological markers of  
40 *Plasmodium falciparum* infection - Etramp5.Ag1, GEXP18, HSP40.Ag1, Rh2.2030, EBA175, *PfMSP1<sub>19</sub>*,  
41 *PfAMA1*, and *PfGLURP.R2* - was used on a multiplex immunoassay to measure population antibody  
42 responses as trial endpoints.

43 Reductions in sero-prevalence to antigens Etramp.Ag1, *PfMSP1<sub>19</sub>*, Rh2.2030, and *PfAMA1* were  
44 observed in study arms combining rfMDA and RAVC, but only effects for Etramp5.Ag1 were  
45 statistically significant. Etramp5.Ag1 sero-prevalence was significantly lower in all intervention arms.  
46 Compared to the reference arms, adjusted Etramp5.Ag1 prevalence ratio (aPR) was 0.77 (95%CI 0.65  
47 – 0.90,  $p < 0.001$ ) for rfMDA and 0.79 (95%CI 0.67 – 0.92,  $p = 0.001$ ) for RACD. For combined rfMDA  
48 plus RAVC, aPR was 0.58 (95%CI 0.45 – 0.75,  $p < 0.001$ ). Significant reductions were also observed  
49 based on continuous antibody responses. Sero-prevalence as an endpoint was found to achieve  
50 higher study power (99.9% power to detect a 50% reduction in prevalence) compared to  
51 quantitative polymerase chain reaction (qPCR) prevalence (72.9% power to detect a 50% reduction  
52 in prevalence).

53 The use of serological endpoints to evaluate trial outcomes was comparable to qPCR and measured  
54 effect size with improved precision. Serology has clear application in cluster randomised trials,  
55 particularly in settings where measuring clinical incidence or infection is less reliable due to seasonal  
56 fluctuations, limitations in health care seeking, or incomplete testing and reporting.

57

58 **Key questions**

59 *What is already known?*

- 60       ▪ Numerous serological studies across sub-Saharan Africa have found that malaria-specific  
61       antibody responses are highly correlated with malaria transmission.
- 62       ▪ Serology is increasingly being used to complement traditional malaria surveillance data in  
63       settings where clinical or parasitological measures of incidence or infection may be less  
64       reliable due to fluctuations in parasite densities, limitations in health care seeking, or  
65       incomplete testing and reporting.
- 66       ▪ The identification of new serological markers associated with recent malaria exposure hold  
67       promise as measures of malaria incidence. In previous longitudinal cohort studies,  
68       Etramp5.Ag1 has been shown to be a discriminatory serological marker capable of detecting  
69       spatio-temporal differences in malaria transmission. However, these markers have never  
70       been formally used as endpoints in a malaria cluster randomised trial.

71 *What are the new findings?*

- 72       ▪ This study is the first application of serological endpoints in a malaria cluster randomised  
73       trial. Using a multiplexed immunoassay, a panel of sero-incidence markers of recent malaria  
74       exposure were used to evaluate the effectiveness of reactive focal mass drug administration  
75       (rfMDA) and reactive focal vector control (RAVC) compared to reactive case detection  
76       (standard of care) to reduce malaria transmission.
- 77       ▪ Cluster-level antibody responses were significantly lower in all intervention arms compared  
78       to control, and effect sizes were measured with greater study power than other trial  
79       endpoints such as quantitative polymerase chain reaction (qPCR) parasite prevalence.

80 *What do the new findings imply?*

- 81       ▪ The findings from this study, together with ongoing innovations in assay design and multi-  
82       disease platforms, illustrate the potential application of serological markers as endpoints in  
83       cluster randomised trials. The use of serological endpoints can help achieve trial efficiencies,  
84       such as reduced sample size, particularly in low transmission settings or multi-intervention  
85       trials where measuring differences between study arms may be challenging with clinical or  
86       parasitological endpoints alone.

87

88

## 89 Introduction

90 Namibia is one of a number of southern African countries targeting malaria elimination, and, in  
91 2009, the Elimination 8 initiative was created to support these goals region-wide.<sup>1,2</sup> Between 2001  
92 and 2011, Namibia experienced a marked epidemiologic transition, during which clinical cases of  
93 malaria fell by 97.4% and malaria-attributable deaths by 98%.<sup>3</sup> This was the result of policies for  
94 indoor-residual spraying (IRS) in endemic areas, improved case management with rapid diagnostic  
95 tests (RDTs), and access to artemisinin combination therapies (ACTs).<sup>3-6</sup> However, recent progress  
96 towards malaria elimination has stalled. Despite decades of widespread IRS and the introduction of  
97 reactive case detection (RACD) in 2012, areas of northern Namibia experienced significant outbreaks  
98 during the 2016 malaria season,<sup>7</sup> and these periodic spikes in incidence have created unexpected  
99 challenges for the planning of elimination efforts.

100 RACD is widely used for actively targeting asymptotically infected residents in the neighbourhood  
101 of passively identified index cases,<sup>8</sup> but the limited sensitivity of current field diagnostics<sup>9-11</sup> may be  
102 one reason RACD has not demonstrated effectiveness at low transmission.<sup>12-14</sup> To accelerate malaria  
103 elimination in settings such as Namibia, new focal approaches such as reactive focal mass drug  
104 administration (rfMDA) and reactive vector control (RAVC) have been suggested, whereby MDA or  
105 vector control is targeted at the infectious human or mosquito reservoir specifically in high-risk  
106 areas in close proximity to a passively-detected index case. In 2017, a cluster randomised control  
107 trial was conducted in Zambezi Region, Namibia, evaluating rfMDA and RAVC compared to RACD as  
108 standard of care and observed a reduction in clinical incidence and prevalence of infection measured  
109 by quantitative polymerase chain reaction (qPCR).<sup>15</sup>

110 In elimination settings, measuring changes in transmission can be imprecise due to low levels of  
111 clinical incidence, making adequate sample sizes difficult to achieve. As a result, serological methods  
112 are increasingly being used alongside clinical and parasitological metrics to complement traditional  
113 surveillance data. Studies in moderate to low transmission regions across sub-Saharan Africa,  
114 including Tanzania<sup>16</sup>, Equatorial Guinea<sup>17</sup>, South Africa<sup>18</sup> and The Gambia<sup>19</sup>, have found that malaria-  
115 specific antibody responses are highly correlated with parasitological endpoints. Serological assays  
116 can be a particularly cost-effective tool in settings where parasite densities commonly fall below the  
117 detection limit of other field diagnostics such as RDTs. In some areas, serology has also been used to  
118 confirm interruption of malaria transmission.<sup>20,21</sup>

119 Most serological studies for malaria have monitored historical trends based on long-lived antibody  
120 responses rather than with sero-incidence markers associated with short-lived antibody responses.  
121 Sero-incidence markers aim to measure recent exposure or detect rapid changes in transmission  
122 (e.g., over periods of 1-5 years). Recent studies analysing cohorts in Uganda and Mali have identified  
123 several serological markers that are predictive of clinical malaria in the previous year<sup>22</sup>. Etramp5.Ag1  
124 in particular has been shown to be a discriminatory sero-incidence measure between geographical  
125 regions and transmission seasons in The Gambia<sup>19,23</sup>. However, serological markers of malaria  
126 exposure have rarely been used as outcome measures for cluster randomised trials.

127 The study presented here is an extended trial analysis assessing cluster-level antibody responses to a  
128 panel of serological markers previously shown to be associated with parasitological measures of  
129 malaria.<sup>19,23</sup> Using a multiplexed bead-based assay and samples from the endline cross-sectional  
130 survey of the RACD/rfMDA/RAVC trial, the aim of this study was to evaluate the trial interventions  
131 using serological markers of recent malaria infection. These are compared with the primary trial  
132 endpoints of malaria case incidence and parasite infection prevalence. Additionally, trial design  
133 parameters, including inter-cluster coefficient of variation and trial sample sizes, were re-estimated  
134 to assess whether trial efficiencies can be achieved using serological endpoints.

## 135 Materials and Methods

136 **Data and study design.** The study was an open label cluster randomised controlled trial with a 2x2  
137 factorial study design (Supplementary Figure S1) with four study arms receiving the following  
138 interventions:

- 139 1. **RACD (standard of care control arm):** rapid diagnostic testing and treatment of positives  
140 with artemether-lumefantrine (AL) and single dose primaquine of individuals residing within  
141 a 500m radius of a recent passively detected index case
- 142 2. **rfMDA:** presumptive treatment with artemether-lumefantrine (AL) of individuals residing  
143 within a 500m radius of a recent passively detected index case
- 144 3. **RAVC and RACD combined:** indoor residual spraying (IRS) using pirimiphos-methyl,  
145 administered to households of individuals residing within a 500m radius of a recent passively  
146 detected index case, plus standard of care RACD as described above
- 147 4. **rfMDA and RAVC combined:** indoor residual spraying (IRS) using pirimiphos-methyl,  
148 administered to households of individuals residing within a 500m radius of a recent passively  
149 detected index case, plus rfMDA as described above

150 All clusters received routine annual IRS before the start of the malaria season using dichloro-  
151 diphenyl-trichloroethane (DDT) conducted as part of standard malaria control activities by the  
152 Namibian Ministry of Health and Social Services (MoHSS).

153  
154 The trial was conducted in Zambezi Region, Namibia, from January to November 2017, within the  
155 catchment areas for 11 health facilities. Of the 102 enumeration areas (EAs) in the study area, 46  
156 clusters met the exclusion criteria (no incident cases of malaria between 2012 and 2014 or  
157 incomplete incidence data due to missing records), and the remaining 56 clusters were selected and  
158 randomly allocated to one of four arms using restricted randomisation. Restriction criteria included  
159 mean annual incidence in 2013 and 2014, population size, population density, and mean distance  
160 from the household to a health-care facility. The primary outcome of the main study was cumulative  
161 incidence of passively detected malaria. Secondary outcomes included infection prevalence,  
162 intervention coverage, refusal rates, adverse events, and adherence to drug regimen. Details of the  
163 study are reported on ClinicalTrials.gov: NCT02610400<sup>24</sup> and described in Medzihradsky et al, 2018.<sup>25</sup>  
164 The clinical and parasitological results of the trial are reported in Hsiang et al.<sup>15</sup>

165 An endline cross-sectional survey was conducted as part of the trial at the end of the malaria season  
166 from May to August 2017 to measure infection prevalence by qPCR and sero-prevalence. Within  
167 each of the 56 clusters, 25 households were randomly sampled for inclusion in the cross-sectional  
168 survey. All residents older than six months who slept in the household at least three nights per week  
169 in the previous four weeks were eligible for inclusion in the cross-sectional survey. For consenting  
170 individuals, blood samples were collected by finger prick for molecular and serological analysis on  
171 dry blood spot (DBS) filter paper (Whatman 3 Corporation, Florham Park, NJ, USA) and 250 µl of  
172 whole blood in BD Microtainer® tubes with EDTA additive (Becton, Dickinson and Corporation,  
173 Franklin Lakes, NJ, USA). Individuals, both symptomatic and asymptomatic, with positive RDT results  
174 were treated with AL and single dose primaquine according to national guidelines.<sup>26</sup>

175 The trial received ethical approval from the Namibia MoHSS (17/3/3), and the Institutional Review  
176 Boards of the University of Namibia (MRC/259/2017), University of California San Francisco (15-  
177 17422) and London School of Hygiene & Tropical Medicine (10411). Study findings were shared in  
178 stakeholder meetings attended by regional and national MoHSS representatives, with health facility  
179 staff and community leaders, through peer-reviewed publications and at scientific conferences.

### 180 **Laboratory procedures**

181 Human plasma from whole blood samples were prepared and tested on the Luminex assay platform  
182 using procedures described by Wu et al.<sup>27</sup> Plasma samples from study participants were prepared

183 from 250 µl of whole blood collected in BD Microtainer tubes with EDTA additive in a 1:200 sample  
184 dilution. Two sets of positive controls were used based on pooled sera from 100 hyper-immune  
185 Tanzanian individuals and a WHO malaria reference lyophilised serum reagent (NIBSC 10-198).<sup>28</sup>  
186 Plasma samples from European malaria-naïve adults (1:200 dilution) were used as negative controls.  
187 Two wells on each plate containing only antigen-coupled beads and sample buffer were included to  
188 measure background signal.

189 *Antigen selection and design.* A subset of eight antigens (Etramp5.Ag1, GEXP18, HSP40.Ag1,  
190 Rh2.2030, EBA175, PfMSP1<sub>19</sub>, PfAMA1, PfGLURP.R2) were selected from an initial screen of 856  
191 candidates on an *in vitro* transcription and translation (IVTT) protein microarray based on their  
192 correlation with clinical and parasitological endpoints in previous studies.<sup>19,23</sup> Antigens were  
193 expressed in *Escherichia coli* (*E.coli*) as glutathione S-transferase (GST)-tagged fusion proteins,  
194 except for PfAMA1 expressed in *Pichia pastoris* as a histidine-tagged protein. Non-malaria reactivity  
195 against GST-tagged fusion proteins were assessed using IgG responses to GST-coupled beads, and  
196 samples with greater than 1000 median fluorescence intensity (MFI) were excluded from analyses  
197 due to high non-specific IgG response. A full description of laboratory methods, including antigen  
198 constructs, expression platform, coupling conditions and data standardisation are detailed further in  
199 Wu et al<sup>27</sup> and summarised in Supplementary Table S2. Antigens were classified as short-, medium-,  
200 and long-term markers of malaria exposure based on the magnitude of the association of antibody  
201 responses with age as a proxy for longevity of antibody response (Supplementary Table S3).

202

### 203 **Statistical analyses**

204 Serological responses were used as endpoints to assess the following effects (Supplementary Figure  
205 S1):

- 206 1. rfMDA vs. RACD (with or without RAVC)
- 207 2. RAVC vs No RAVC (with either RACD or rfMDA)
- 208 3. rfMDA plus RAVC vs. RACD only

209 In line with the primary trial analysis, reported by Hsiang et al<sup>15</sup>, a modified intention-to-treat  
210 analysis was conducted, which adjusted at the EA-level for baseline incidence in 2016, intervention  
211 response time, proximity to a Namibia MoHSS co-intervention, index case coverage (the proportion  
212 of eligible index cases covered by an intervention), and the household coverage of the target  
213 population (the proportion of eligible individuals or households within an intervention event area  
214 triggered by an index case that actually received the intervention). Proximity to a MoHSS co-  
215 intervention was defined as households within 500m of a village that received concomitant  
216 additional interventions carried out by the Namibia MoHSS in the form of active case detection or  
217 IRS. As these additional interventions in close proximity to some of the study clusters could not be  
218 balanced between study arms, it was necessary to adjust for this as a variable in the analysis. For  
219 RACD and rfMDA study arms, the index case coverage was defined as the proportion of index cases  
220 where the intervention was implemented in households covering at least 25 individuals within 5  
221 weeks of case identification. For the RAVC study arms, index case coverage was defined as the  
222 proportion of index cases where at least 7 households were sprayed within 5 weeks of case  
223 identification.

224 Serological responses were measured as median fluorescence intensity (MFI) values, normalised to  
225 account for between plate variation. Sero-positivity values for all samples were assigned according  
226 to MFI thresholds defined by the mean and standard deviation of a pool of 71 malaria naïve blood  
227 donors used as negative controls.<sup>19,27</sup> For antigens associated with longer-lived antibody responses  
228 (PfMSP1<sub>19</sub>, PfAMA1, and PfGLURP.R2), individuals previously exposed but not infected for 5 or more  
229 years may still have higher average antibody responses<sup>29,30</sup> than malaria-naïve donors and represent  
230 a more accurate population to define endemic sero-negative thresholds. For these markers, sero-

231 positivity MFI thresholds were defined as the mean and standard deviation of the negative  
232 component of a Gaussian mixture model fit to antibody responses of the endemic population.  
233 Serological responses were then assessed to compare the intervention study arms.

234 **Sero-prevalence.** Sero-prevalence of population antibody responses to each antigen was estimated  
235 using generalised linear models (GLM) with log link, binomial family, generalised estimating  
236 equations (GEE) allowing for within cluster correlation and assessed according to the three  
237 interventions described above. Results are presented as unadjusted mean sero-prevalence by  
238 intervention and study arm and as unadjusted and adjusted sero-prevalence ratios, where the  
239 denominator is mean sero-prevalence of clusters in the reference study arm (RACD only).  
240 Additionally, the combined sero-prevalence to any short-term marker (i.e. sero-positivity to at least  
241 one of Etramp5.Ag1, GEXP18 or HSP40.Ag1) as an overall measure of sero-incidence was also  
242 estimated to assess whether positivity to multiple endpoints would result in an enhanced  
243 comparison between interventions.

244 **Antibody acquisition.** Dichotomisation of data into positive and negative categories, the basis for  
245 estimating sero-prevalence, can lead to some loss of sensitivity in detecting changes in malaria  
246 transmission.<sup>17</sup> Therefore, changes in the magnitude of antibody responses were also assessed  
247 using antibody acquisition models, which estimates the geometric mean MFI by age<sup>23</sup> for each  
248 antigen and cluster. Using this model fit, the total area under the antibody acquisition curve,  
249 referred to in this analysis as the AUC value, represents the cumulative antibody response across all  
250 ages. The effect of the intervention on mean AUC across clusters was assessed using GLM (with log  
251 link and gaussian family), inverse-weighted by the 95% CI of the cluster AUC values, and results are  
252 presented as unadjusted and adjusted AUC ratios, where the denominator is mean AUC value of  
253 clusters in the reference study arm.

254 For both sero-prevalence and antibody acquisition, regression analysis tested the effect of each  
255 intervention independently as well as with an interaction between rfMDA and RAVC (Supplementary  
256 Tables S5 and S6), allowing assessment of the effect of each intervention singly (rfMDA or RAVC) or  
257 in combination (rfMDA plus RAVC). This allows interpretation of whether the combination of rfMDA  
258 and RAVC interventions were simply additive, synergistic, or antagonistic

259 **Between cluster coefficient of variation and sample size calculations.** To assess how trial sample  
260 sizes might be affected by using serological outcome measures for the design of a study, we  
261 estimated the between cluster coefficient of variation,  $k$ ,<sup>31</sup> for sero-prevalence to Etramp5.Ag1 (the  
262 best performing individual marker) to compare these to corresponding values of  $k$  for qPCR. Analysis  
263 was limited to RACD only arms as a proxy for baseline antibody patterns. The required number of  
264 clusters per arm,  $c$ ,<sup>31</sup> was calculated to demonstrate a change in sero-prevalence of 50% in each of  
265 the RAVC or rfMDA arms and 75% in the the rfMDA plus RAVC arm, compared to RACD only as the  
266 control. These percentages were the expected reductions in clinical incidence upon which the main  
267 study was designed. Sample size (number of clusters per study arm) was estimated for a range of  
268 cluster sizes, assuming a desired study power of 80% and a 5% two-sided significance level. As a  
269 comparator, the coefficient of variation and minimum sample sizes were also calculated using qPCR  
270 prevalence as the endpoint.

## 271 Results

272 **Study participant characteristics and intervention implementation and coverage.** A total of 4,361  
273 individuals were enrolled in the end-line cross-sectional survey, of which 4,164 samples were  
274 available for serological processing. After excluding samples with high GST values to avoid the  
275 influence of non-malaria specific antibody response, a total of 3,657 samples were available for final  
276 analysis. Age and gender distribution were similar across study arms (Supplementary Table S1). Less  
277 than 10% of participants reported sleeping outdoors in the previous two weeks and only a quarter of  
278 participants reported sleeping under a bed net the previous night. Intervention coverage by index  
279 case and target population and proximity to MoHSS co-intervention were reported previously.<sup>15</sup>

280 Briefly, coverage ranged from 87% to 95.2% of the target population, and between 43.4% and 61.8%  
281 of households (by study arm) were within 500m of a village that received concomitant additional  
282 interventions carried out by the Namibia MoHSS.

283 **Sero-prevalence by study arm.** Population antibody responses varied by antigen, with sero-  
284 prevalence in the RACD only arm ranging from 0.22 (95%CI 0.20 – 0.27) for HSP40.Ag1 and 0.28  
285 (95%CI 0.24 – 0.33) for Etramp5.Ag1 to 0.48 (95%CI 0.45 – 0.52) for PfAMA1 (Supplementary Figure  
286 S2, Table S4). The largest reductions in sero-prevalence were observed in the rfMDA plus RAVC  
287 compared to the RACD only arms for Etramp5.Ag1, PfMSP1<sub>19</sub>, Rh2.2030, and PfAMA1 (Figure 1A).  
288 However, results were only statistically significant for antibody responses to Etramp5.Ag1.

289 Sero-prevalence to Etramp5.Ag1 was significantly lower in all intervention arms compared to the  
290 reference arms (Figure 1A, Table 1). In the rfMDA arms, unadjusted mean Etramp5.Ag1 sero-  
291 prevalence was 0.22 (95% CI 0.19 – 0.25) compared to 0.28 (95%CI 0.25 – 0.30) in the RACD  
292 reference arms, adjusted prevalence ratio (aPR) 0.78 (95%CI 0.65 – 0.91, p<0.001). Mean  
293 Etramp5.Ag1 sero-prevalence for RAVC arms was 0.23 (95%CI 0.20 – 0.26) vs 0.27 (95%CI 0.24 –  
294 0.31) in the non-RAVC arms, aPR 0.79 (95%CI 0.67 – 0.92, p=0.001). The largest effect was observed  
295 in the rfMDA plus RAVC arms, where mean Etramp5.Ag1 sero-prevalence was 0.18 (95%CI 0.14 –  
296 0.25) compared to 0.28 (95%CI 0.24 – 0.33) in the RACD only arms, aPR 0.59 (95%CI 0.46 – 0.76,  
297 p<0.001).

298 Similar effects were observed in the main study, as shown in Figure 1A, where the adjusted qPCR  
299 prevalence ratio was 0.59 (95%CI 0.21 – 0.98, p=0.039) for rfMDA versus RACD, 0.36 (95%CI 0.13 –  
300 0.59, p<0.0001) for RAVC versus non-RAVC, and 0.16 (95%CI 0.05 – 0.55, p=0.004) for rfMDA plus  
301 RAVC versus RACD only. Sero-prevalence to a combination of sero-incidence markers (Etramp5.Ag1,  
302 GEXP18, and HSP40.Ag1) were also assessed, but no significant differences between study arms  
303 were observed. The distribution of cluster-level sero-prevalence by study arm is shown in  
304 Supplementary Figure S4.

305 **Antibody acquisition by study arm.** Analysis of cluster-level Etramp5.Ag1 AUC values based on  
306 continuous antibody response confirmed smaller, but similar, effects between study arms (Figure  
307 1B, Table 2). The AUC ratio of rfMDA was 0.83 (95%CI 0.72 – 0.94, p=0.002) relative to RACD, and for  
308 RAVC, the AUC ratio was 0.85 (95%CI 0.73 – 0.97, p=0.014) relative to non-RAVC. The AUC ratio for  
309 rfMDA plus RAVC was 0.70 (95% CI 0.58 - 0.85, p<0.001) relative to RACD only. A difference in  
310 antibody responses to PfAMA1 between study arms was also observed based on unadjusted AUC  
311 values, with an AUC ratio of 0.73 (95%CI 0.48 – 0.97, p=0.028) for RAVC relative to non-RAVC, and an  
312 AUC ratio of 0.71 (95%CI 0.41 – 1.00, p=0.048) for rfMDA plus RAVC relative to RACD only. The  
313 distribution of cluster-level AUC values is shown by study arm in Supplementary Figure S5.

314 **Serology-based coefficient of variation and sample size.** The estimated sero-prevalence coefficient  
315 of variation between clusters,  $k$ , in RACD only clusters was 0.24, compared to a qPCR prevalence  
316 coefficient of variation of 0.71 (Figure 3A and 3B). For a range of cluster sizes, the number of clusters  
317 per arm was estimated to detect an effect size of either a 75% or a 50% reduction in sero-prevalence  
318 with 80% study power and a 5% significance level ( $\alpha=5\%$ ), assuming a baseline sero-prevalence  
319 of 0.28 (mean sero-prevalence RACD only arm, Table 1). Assuming an average cluster sample of 65  
320 individuals (based on the mean number of respondents per cluster in the cross-sectional survey), the  
321 minimum sample size required to observe a 75% reduction in sero-prevalence (between rfMDA plus  
322 RAVC vs RACD only) was 2.6 clusters per arm, while 5.4 clusters per arm would be required to  
323 observe a 50% reduction in sero-prevalence (between either rfMDA vs RACD or RAVC vs. no RAVC).  
324 The observed reductions in sero-prevalence to Etramp5.Ag1 from the study were 35% in the rfMDA  
325 plus RAVC compared to RACD only arms and 25% in the rfMDA compared to RACD arms, which  
326 would require a serology sample size of 11 and 22 clusters, respectively.

327 Alternatively, for the trial as designed with 28 clusters per arm to compare the two main effects  
328 (rfMDA vs RACD, and RAVC vs no RAVC), and 14 clusters per arm to compare the combination rfMDA



329 plus RAVC vs RACD only, there would have been >99.9% power to detect reductions in  
330 seroprevalence of 50% and 75% respectively for each of the comparisons (i.e., virtually no chance of  
331 a type 2 error). Observed reductions in sero-prevalence of 35% and 25% can be detected with study  
332 power of 99.6% and 88.7% respectively (Figure 3C).

333 By contrast, assuming a baseline qPCR prevalence of 0.033 (mean prevalence in RACD only clusters),  
334 a minimum of 12.9 and 33 clusters per arm would be required to detect a decrease of 75% and 50%  
335 qPCR prevalence, respectively. Based on modelled relationship between log odds of sero-positivity  
336 and log odds of qPCR positivity (Supplementary Materials equation 1), a qPCR prevalence of 0.033  
337 translates to Etramp5.Ag1 sero-prevalence of 0.25 (95% CrI 0.23 – 0.28), aligned with the observed  
338 baseline sero-prevalence in the RACD only arms noted above. In the study, the qPCR prevalence  
339 reductions observed were 45% in the rfMDA plus RAVC arms and 25% in the rfMDA arms.

340 Sensitivity analysis of the effect of coefficient of variation and baseline prevalence on required  
341 sample size was explored for both serology and qPCR endpoints (Figure 4A and 4B). For serology,  
342 based on coefficient of variation values between 0.1 to 0.5 and baseline sero-prevalence from 0.05  
343 to 0.45, the estimated sample size was between 2.4 and 24.7 clusters per arm. For qPCR, based on  
344 coefficient of variation values between 0.5 to 0.9 and baseline qPCR prevalence from 0.02 to 0.10,  
345 estimated sample sizes ranged from 17.4 to 68.3 clusters per arm. When using 28 clusters per study  
346 arm, while there is 98% study power to detect a 75% reduction in qPCR prevalence, this study power  
347 drops to 72.9% when trying to detect a 50% reduction (Figure 3C). For the reductions in qPCR  
348 prevalence observed in the end-line survey, there is a 62.3% and 21.7% study power to detect a 35%  
349 and 25% decrease in prevalence, respectively.

## 350 Discussion

351 This study sought to assess the application of serological markers for malaria exposure in the context  
352 of a cluster randomised trial, which was originally analysed using clinical incidence and qPCR  
353 prevalence as outcomes. Previous analysis showed that the introduction of rfMDA and RAVC,  
354 independently and in combination, had a significant effect on malaria clinical incidence and qPCR  
355 prevalence, after adjusting for factors that could not be balanced between study arms (as was done  
356 in Hsiang et al). This observation was replicated when assessing the efficacy of the interventions  
357 using the serological marker Etramp5.Ag1; rfMDA and RAVC were shown to be associated with  
358 significantly reduced antibody responses as independent and combined interventions. The  
359 intervention effects on antibody responses were detected using both binary and continuous  
360 antibody measurements.

361 The use of sero-incidence markers to evaluate trial outcomes was found to be comparable to the use  
362 of qPCR parasite prevalence, with the added benefit of increased precision in the measure of effect  
363 size (a standard error for sero-prevalence ratio of only 0.06 compared to a standard error of 0.19 for  
364 qPCR prevalence ratio). This is likely due to lower within-season fluctuations in population antibody  
365 responses compared to variations in levels of parasitaemia affecting detection by molecular assays.  
366 In previous studies in The Gambia, Etramp5.Ag1 antibody responses was found to persist for several  
367 months following the transmission season, before waning prior to transmission season.<sup>23</sup> This  
368 suggests that serology is a more temporally stable measurement of malaria exposure throughout  
369 the transmission season but is still able to detect short-term changes occurring over the course of  
370 less than a year. This improved measurement consistency is reflected in a between-cluster  
371 coefficient of variation for sero-prevalence that is two-thirds lower than the coefficient of variation  
372 for qPCR prevalence. This can translate to significantly improved study power to detect fine-scale  
373 changes in transmission with smaller sample sizes. In multi-intervention studies, smaller effects are  
374 likely envisaged between study arms. For example, a number of trials are currently comparing the  
375 use of MDA with or without ivermectin,<sup>32</sup> as well as the use of the RTS,S malaria vaccine combined  
376 with seasonal malaria chemoprevention (SMC).<sup>33</sup> These studies will likely be evaluated in the context

377 of standard malaria control intervention already in use and detecting subtle differences may be  
378 challenging.

379 Serological endpoints may be particularly relevant in the design of cluster randomised trials in low  
380 transmission settings with limitations in study power. In these areas, rates of clinical incidence or  
381 malaria infection prevalence may be very low or close to zero and would require prohibitively large  
382 sample sizes to detect intervention effects. This is highlighted in this study in Namibia, where all  
383 clusters measuring a qPCR prevalence or clinical incidence of zero still had detectable sero-positive  
384 individuals (Supplementary Figure S7). Serology may also serve as a cost-effective secondary  
385 endpoint to other measures of infection such as PCR.

386 Ongoing research to develop new serological markers into point-of-care lateral flow devices may  
387 enable a new method for rapid field-based malaria surveillance. This is increasingly important in  
388 settings such as Namibia to monitor for potential outbreaks and to prevent reintroduction of malaria  
389 infection following elimination. For Namibia, serological surveillance could be beneficial given the  
390 fluctuations in malaria incidence in recent years. Due to frequent population movement from  
391 neighbouring countries, especially along the Angolan and Zambian borders, low to moderate  
392 transmission has been found to persist and receptivity remains high.<sup>4</sup>

393 Our study findings have shown that the combination of higher prevalence and lower between  
394 cluster variation on sero-positivity compared to parasite positivity translate into substantially higher  
395 study power for serological endpoints, and near negligible chance of a type 2 error. Further research  
396 can help to operationally translate serology into a standardised trial tool. There have been only a  
397 limited number of studies measuring serology in malaria intervention trials, most of which have  
398 been in sub-Saharan Africa (Zambia<sup>34</sup> and this study in Namibia). There have been studies in Haiti,  
399 Uganda, Zambia, The Gambia and Indonesia, where similar levels of immune responses to  
400 Etramp5.Ag1 have been measured, and further testing of this marker in the context of intervention  
401 trials could be useful.

402 One potential challenge is that rates of antibody acquisition, boost, and decay may differ between  
403 antigens and individuals. This may be one reason that strong antigenic signals were not observed for  
404 non-Etramp5.Ag1 markers in this study. Sequence variations in parasite proteins between  
405 populations or regions may also lead to some variation in antibody responses. Fortunately, refining  
406 the design of recombinant proteins for more precise serological surveillance is the subject of  
407 ongoing work.<sup>35,36</sup> Improvements in assay design are currently leveraging multiplexing technology to  
408 measure the combined response to diverse panels of antigenic variants, capturing the full breadth of  
409 antibody responses in a population for single diseases or across multiple pathogens. Other strategies  
410 include the production of chimeric proteins with specific epitopes to these variants.

411 Biological variations in antibody responses are inevitable to some degree and integrating serological  
412 data with other important measures, such as age and transmission intensity, allows a  
413 comprehensive characterisation of epidemiological trends. For standardised surveillance across  
414 locations, panels based on studies in a diversity of settings will be beneficial. Serological surveillance  
415 is increasingly being standardised for a number infectious diseases such as dengue<sup>37</sup>, trachoma<sup>38</sup>,  
416 and lymphatic filariasis<sup>39</sup>. The inclusion of malaria in multi-disease sero-diagnostic panels<sup>40,41</sup> can  
417 allow for cost and time efficiencies, reducing the number of single-disease surveys required in  
418 diverse health monitoring programmes. This can help guide integrated programme delivery rather  
419 than a reliance on multiple vertical programmes delivered separately.

420 Serological endpoints in intervention trials have become accepted as outcomes for other infectious  
421 diseases, such as arboviruses. For example, an ongoing cluster randomised trial on the efficacy of  
422 *Wolbachia*-infected *Aedes aegypti* in Brazil will measure reductions in sero-incidence to dengue,  
423 zika, and/or chikungunya virus as primary trial endpoints.<sup>42</sup> In a similar randomised controlled trial in  
424 Indonesia, baseline sero-prevalence was used to infer age-specific transmission rates and median  
425 age to first infection to inform trial design.<sup>43</sup> In the case of Zika, it has been suggested that the use of

426 select antigens could help distinguish between antibody responses arising from vaccination versus  
427 natural infection, offering advantages over molecular diagnostics for trial evaluation and sampling.<sup>44</sup>  
428 The findings from this study, together with ongoing innovations in assay design and multi-disease  
429 platforms, illustrate the potential application of serological markers as endpoints in randomised  
430 trials, especially in settings where measures of clinical incidence or infection may be less reliable due  
431 to limitations in health care seeking, or incomplete testing and reporting.

432

#### 433 **Contributors**

434 MSH, IK, and RG conceptualised and designed the study. MSKD, AB, JLS contributed to study design.  
435 MSH and RG provided overall oversight of the study. KWR and HN led the field implementation of  
436 the trial. LMP, CSG, and VS supported trial field coordination. LMP, LS, LW, and JY led the cross-  
437 sectional survey. PU and SK supported collaboration with the Namibia Ministry of Health and Social  
438 Services. KKAT and DM led the laboratory activities. CP, TH, and JG conducted the serological testing.  
439 MT and LMP conducted the molecular testing. LMP, BG, and CD provided additional oversight of the  
440 laboratory activities. LW led data management and analyses of serological data. BW supported data  
441 analyses. IK, MSH, and CD advised on the data analyses. LW wrote the manuscript. All authors  
442 contributed to data interpretation and approved the final draft of the manuscript.

443

#### 444 **Competing interest**

445 We declare no competing interests.

446

#### 447 **Data sharing**

448 After publication, data collected from this study are available upon request to the corresponding  
449 author. Available data include de-identified individual participant data, cluster-level data, and a data  
450 dictionary defining each field in the set. A published manuscript of the protocol is also available  
451 online. Requests to conduct analyses outside the scope of this publication will be reviewed by the  
452 principal investigators (MSH, DM, RG, and IK) to determine whether a requester's proposed use of  
453 the data is scientifically and ethically appropriate and does not conflict with constraints or informed  
454 consent limitations identified by the institutions that granted ethical approval for the study.  
455 Requests to reanalyse the data presented in this Article will not require such review.

456

#### 457 **Acknowledgements**

458 The authors would like to thank the residents of Zambezi region who consented and participated in  
459 the study. We thank the field staff and the field supervisors (Miriam Sezuni, Sylvester Majakube,  
460 Simataa Nyati, Flavian Libita, and Tererai Msakwa). We thank Tanga Kashupi, Petrina Shikonde, and  
461 Munyaradzi Tambo, for supporting laboratory data collection and Patrick McCreech for supporting  
462 data analysis.

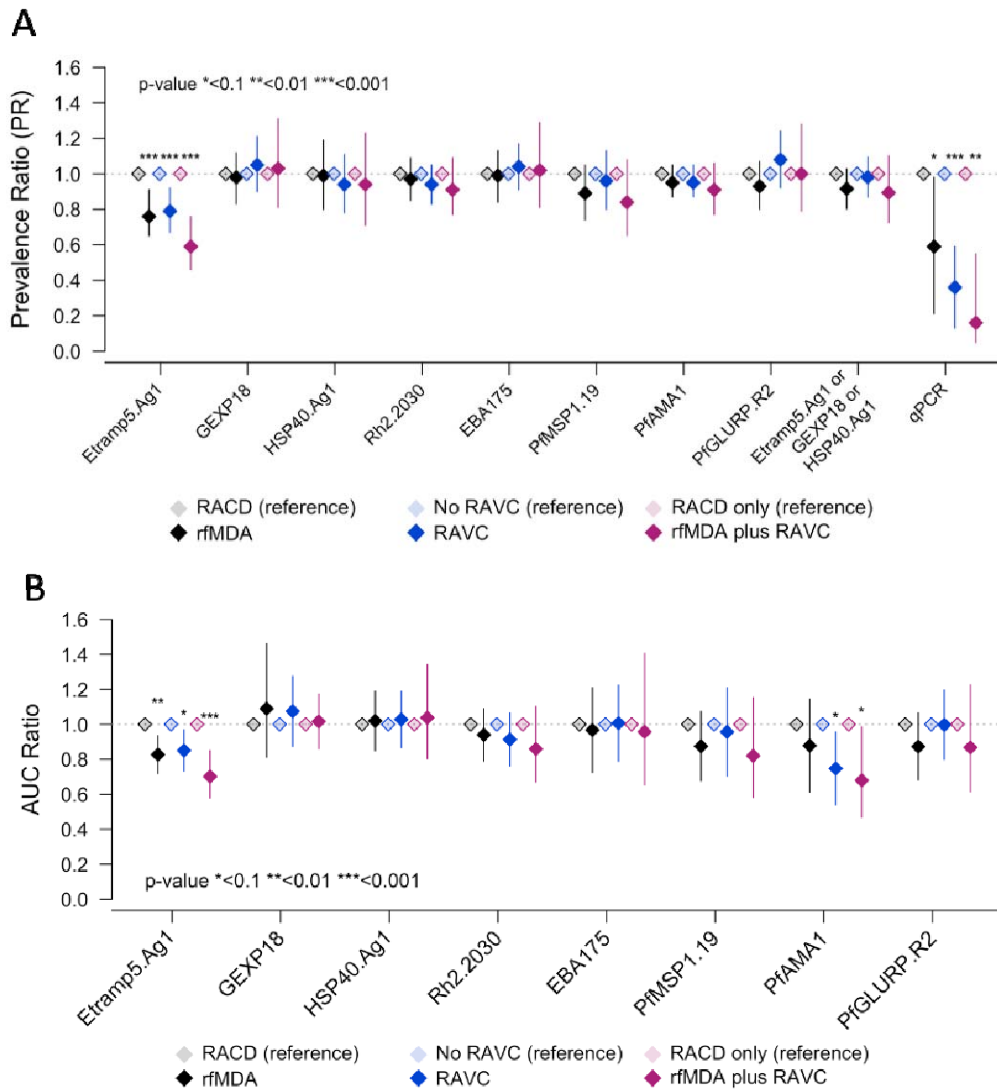
463

#### 464 **Financial disclosure statement**

465 This study was supported by Novartis Foundation (A122666), the Bill & Melinda Gates Foundation  
466 (OPP1160129), and the Horchow Family Fund (5300375400). The funders had no role in study  
467 design, data collection and analysis, decision to publish, or preparation of the manuscript.

468 **Figures and Tables**

469 **Figure 1. Sero-prevalence ratio, qPCR prevalence ratio, and AUC ratio by antigen and intervention.**  
 470 Adjusted prevalence ratios are shown for rfMDA vs RACD (black), RAVC vs. no RAVC (blue) and rfMDA plus  
 471 RAVC vs. RACD only (magenta). Adjusted ratio of log AUC values are shown for rfMDA vs RACD (black), RAVC  
 472 vs. no RAVC (blue) and rfMDA plus RAVC vs. RACD only (magenta). All values are adjusted for EA incidence in  
 473 2016, proportion of EA index cases covered, proportion of target population covered, median time to  
 474 intervention, distance from villages receiving an MOHSS intervention.



475  
 476

477 **Table 1. Etramp5.Ag1 sero-prevalence ratio by intervention.** Mean sero-prevalence and sero-prevalence ratios are estimated using generalised linear models by  
 478 intervention (with log link, binomial family, and GEE with clustering at EA-level). Prevalence ratios are adjusted for EA incidence in 2016, proportion of EA index cases  
 479 covered, proportion of target population covered, median time to intervention, and distance from villages receiving an MOHSS intervention.

	Number of individuals	Number of clusters	Unadjusted			Adjusted	
			Mean prevalence (95% CI)	Prevalence ratio (95% CI)	p-value	Prevalence ratio (95% CI)	p-value
<b>Human reservoir</b>							
RACD (reference)*	1,993	27	0.28 (0.25 – 0.31)	1.00	--	1.00	--
rfMDA*	1,664	28	0.22 (0.19 – 0.25)	0.78 (0.64 – 0.93)	0.004	0.78 (0.65 – 0.91)	<0.001
<b>Mosquito reservoir</b>							
No RAVC (reference)†	1,905	27	0.27 (0.24 – 0.31)	1.00	--	1.00	--
RAVC†	1,752	28	0.23 (0.20 – 0.26)	0.85 (0.70 – 1.00)	0.057	0.79 (0.67 – 0.92)	0.001
<b>Human and mosquito reservoir</b>							
RACD only (reference)	990	13	0.28 (0.24 – 0.33)	1.00	--	1.00	--
rfMDA plus RAVC	749	14	0.18 (0.14 – 0.25)	0.65 (0.49 – 0.87)	0.003	0.59 (0.46 – 0.76)	<0.001

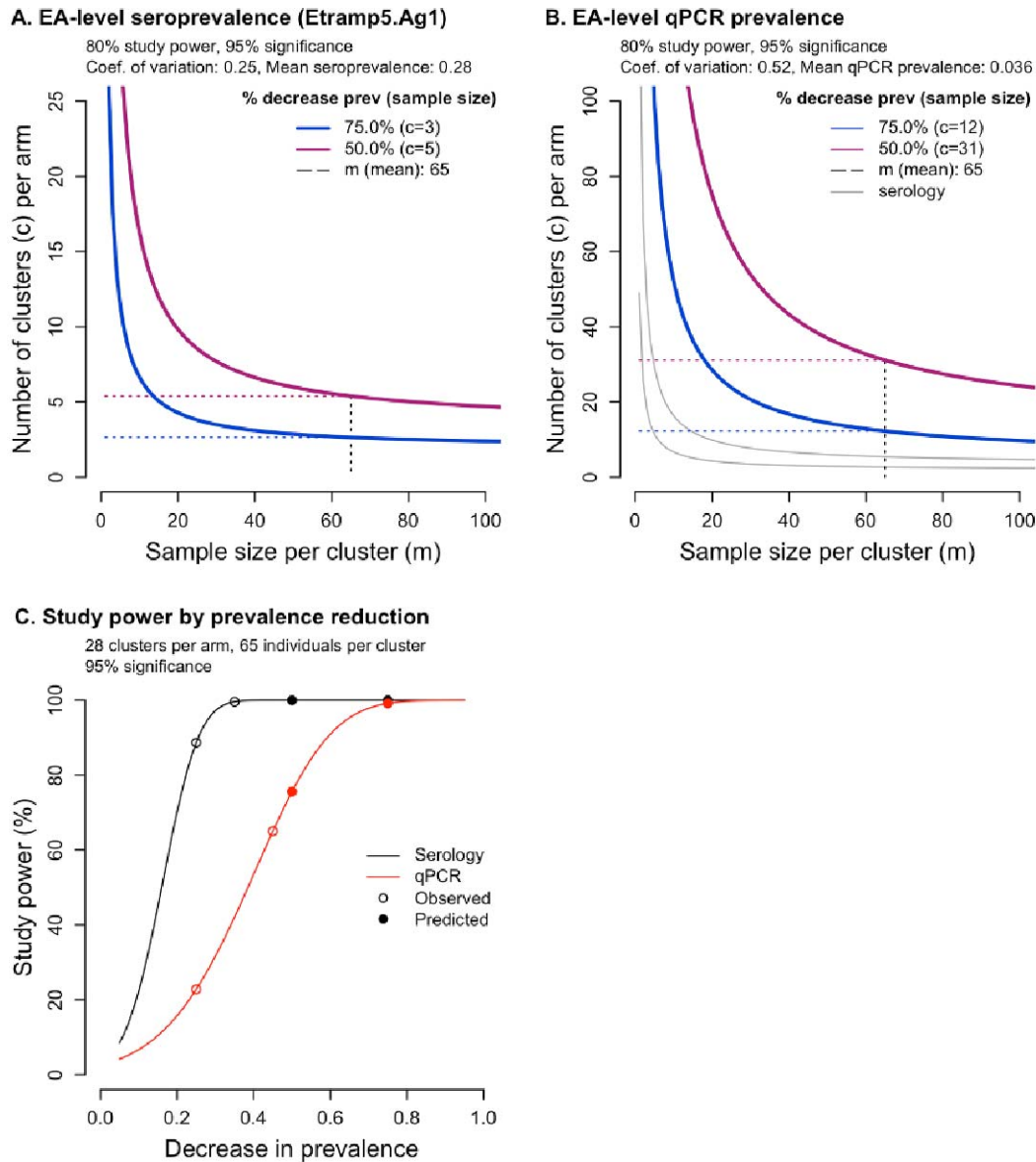
480 \* With or without RAVC † With either RACD or rfMDA  
 481

482 **Table 2. Etramp5.Ag1 Area under the antibody acquisition curve (AUC) by intervention.** Reference arms are clusters in the RACD, non-RAVC, or RACD only arms.  
 483 Ratio of log AUC values in the intervention vs reference arms are estimated using generalised linear models (log link, gaussian family, and GEE for clustering at the EA-level)  
 484 and adjusted for EA incidence in 2016, proportion of EA index cases covered, proportion of target population covered, median time to intervention, and distance from  
 485 villages receiving an MOHSS intervention.

	Number of	Unadjusted			Adjusted	
		Mean AUC value	AUC ratio	p-value	AUC ratio	p-value
<b>Human reservoir</b>						
RACD (reference)*	27	34,595 (31,496 – 37,693)	1.00	--	1.00	--
rfMDA*	28	28,337 (25,429 – 31,244)	0.82 (0.71 – 0.93)	0.002	0.83 (0.72 – 0.94)	0.002
<b>Mosquito reservoir</b>						
No RAVC (reference)†	27	33,211 (30,074 – 36,348)	1.00	--	1.00	--
RAVC†	28	29,382 (26,516 – 32,248)	0.88 (0.76 – 1.00)	0.060	0.85 (0.73 – 0.97)	0.014
<b>Human and mosquito reservoir</b>						
RACD only (reference)	13	35,449 (31,307 – 40,138)	1.00	--	1.00	--
rfMDA plus RAVC	14	25,553 (21,060 – 31,005)	0.72 (0.59 – 0.87)	0.001	0.70 (0.58 – 0.85)	<0.001

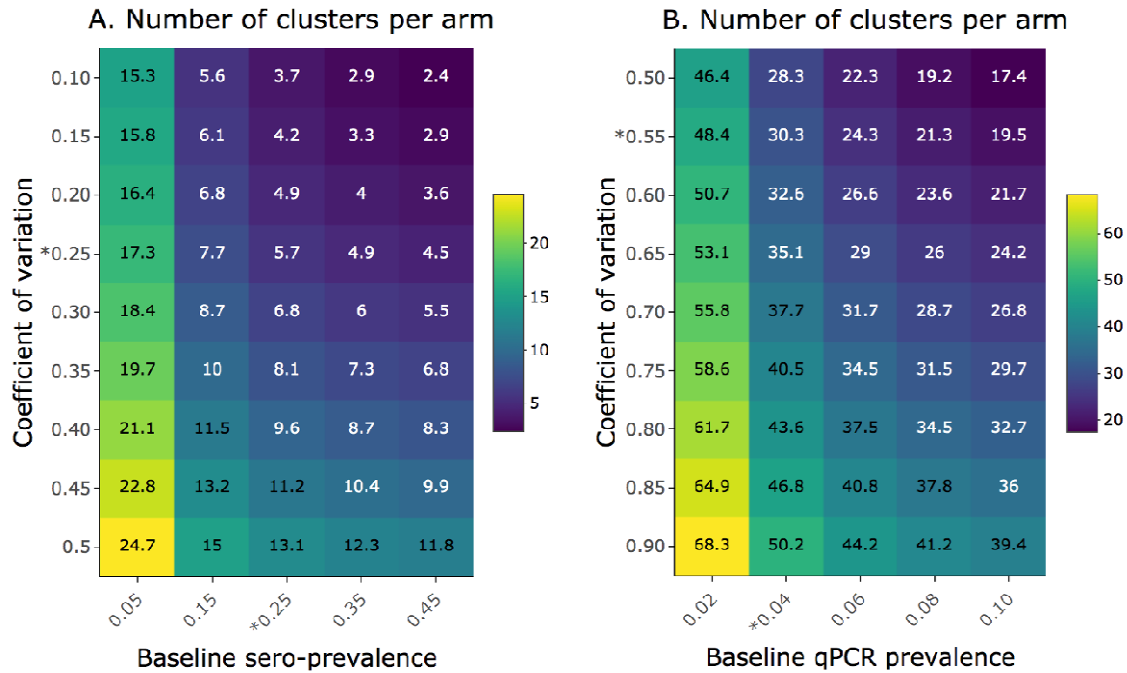
486 \* With or without RAVC † With either RACD or rfMDA

487 **Figure 3. Coefficient of variation, k, and number of clusters per arm, c, using serology compared to qPCR as a**  
 488 **trial endpoint.** Number of clusters per arm is estimated for serology (A) and qPCR (B) based on predicted  
 489 decrease in prevalence of 75% for rfMDA plus RAVC arm (blue) and 50% in rfMDA or RAVC arms (magenta).  
 490 Mean cluster sample size, m (mean), is indicated by the dotted vertical black line, and the associated number  
 491 of clusters required indicated by the horizontal dotted lines. Change in study power by decrease in prevalence  
 492 (C) is shown for serology (black) and qPCR (red), with study power for predicted and observed decreases in  
 493 prevalence indicated by filled and empty circles.



494  
 495  
 496  
 497  
 498  
 499  
 500

501 **Figure 4. Number of clusters per arm,  $c$ , for a range of baseline prevalence and coefficient of variation**  
 502 **values.** Heatmaps show the number of clusters per arm required for a range of coefficient of variation values  
 503 and sero-prevalence (A) or qPCR prevalence (B), assuming an average of 65 individuals per cluster and 50%  
 504 reduction in sero- or qPCR- prevalence. Observed coefficients of variation and baseline sero- and qPCR-  
 505 prevalence are indicated by asterisks.  
 506



\*observed coefficients of variation and baseline sero-prevalence/qPCR prevalence

507  
 508

## 509 References

- 510 1. WHO | World malaria report 2017. *WHO* (2018).
- 511 2. Elimination 8. *Annual Report 2016*. (2016).
- 512 3. Smith Gueye, C. *et al.* Namibia's path toward malaria elimination: a case study of malaria  
513 strategies and costs along the northern border. *BMC Public Health* **14**, 1190 (2014).
- 514 4. Smith, J. L. *et al.* Malaria risk in young male travellers but local transmission persists: a case-  
515 control study in low transmission Namibia. *Malar. J.* **16**, 70 (2017).
- 516 5. Noor, A. M. *et al.* Malaria Control and the Intensity of Plasmodium falciparum Transmission in  
517 Namibia 1969–1992. *PLoS One* **8**, e63350 (2013).
- 518 6. Chanda, E. *et al.* Strengthening tactical planning and operational frameworks for vector  
519 control: the roadmap for malaria elimination in Namibia. *Malar. J.* **14**, 302 (2015).
- 520 7. Chanda, E. *et al.* An investigation of the Plasmodium falciparum malaria epidemic in Kavango  
521 and Zambezi regions of Namibia in 2016. *Trans. R. Soc. Trop. Med. Hyg.* **112**, 546–554 (2018).
- 522 8. WHO Global Malaria Programme. *WHO malaria terminology*. (2016).
- 523 9. Wu, L. *et al.* Comparison of diagnostics for the detection of asymptomatic Plasmodium  
524 falciparum infections to inform control and elimination strategies. *Nature* **528**, S86-93 (2015).
- 525 10. Bousema, T., Okell, L., Felger, I. & Drakeley, C. Asymptomatic malaria infections: detectability,  
526 transmissibility and public health relevance. *Nat. Rev. Microbiol.* **12**, 833–40 (2014).
- 527 11. McCreech, P. *et al.* Subpatent malaria in a low transmission African setting: A cross-sectional  
528 study using rapid diagnostic testing (RDT) and loop-mediated isothermal amplification  
529 (LAMP) from Zambezi region, Namibia. *Malar. J.* **17**, 480 (2018).
- 530 12. Cook, J. *et al.* Mass Screening and Treatment on the Basis of Results of a Plasmodium  
531 falciparum-Specific Rapid Diagnostic Test Did Not Reduce Malaria Incidence in Zanzibar. *J.*  
532 *Infect. Dis.* **211**, 1476–1483 (2015).
- 533 13. Parker, D. M. *et al.* Limitations of malaria reactive case detection in an area of low and  
534 unstable transmission on the Myanmar–Thailand border. *Malar. J.* **15**, 571 (2016).
- 535 14. Hsiang, M. S. *et al.* Active Case Finding for Malaria: A 3-Year National Evaluation of Optimal  
536 Approaches to Detect Infections and Hotspots Through Reactive Case Detection in the Low-  
537 transmission Setting of Eswatini. *Clin. Infect. Dis.* (2019). doi:10.1093/cid/ciz403
- 538 15. Hsiang, M. S. *et al.* Effectiveness of reactive focal mass drug administration and reactive focal  
539 vector control to reduce malaria transmission in the low malaria-endemic setting of Namibia:  
540 a cluster-randomised controlled, open-label, two-by-two factorial design trial. *Lancet* **395**,  
541 1361–1373 (2020).
- 542 16. Drakeley, C. J. *et al.* Estimating medium- and long-term trends in malaria transmission by  
543 using serological markers of malaria exposure. *Proc. Natl. Acad. Sci. U. S. A.* **102**, 5108–13  
544 (2005).
- 545 17. Cook, J. *et al.* Serological markers suggest heterogeneity of effectiveness of malaria control  
546 interventions on Bioko Island, equatorial Guinea. *PLoS One* **6**, e25137 (2011).
- 547 18. Biggs, J. *et al.* Serology reveals heterogeneity of Plasmodium falciparum transmission in  
548 northeastern South Africa: implications for malaria elimination. *Malar. J.* **16**, 48 (2017).
- 549 19. Wu, L. *et al.* Antibody responses to a suite of novel serological markers for malaria  
550 surveillance demonstrate strong correlation with clinical and parasitological infection across  
551 seasons and transmission settings in The Gambia. *BMC Med.* **18**, 304 (2020).
- 552 20. Dewasurendra, R. L. *et al.* Effectiveness of a serological tool to predict malaria transmission  
553 intensity in an elimination setting. *BMC Infect. Dis.* **17**, 49 (2017).
- 554 21. Drakeley, C. & Cook, J. Chapter 5. Potential contribution of sero-epidemiological analysis for  
555 monitoring malaria control and elimination: historical and current perspectives. *Adv.*  
556 *Parasitol.* **69**, 299–352 (2009).
- 557 22. Helb, D. A. *et al.* Novel serologic biomarkers provide accurate estimates of recent  
558 Plasmodium falciparum exposure for individuals and communities. *Proc. Natl. Acad. Sci. U. S.*  
559 *A.* **112**, E4438-47 (2015).



- 560 23. Wu, L. *et al.* Sero-epidemiological evaluation of malaria transmission in The Gambia before  
561 and after mass drug administration. *BMC Med.* **18**, 331 (2020).
- 562 24. University of California, S. F. Evaluation of Targeted Parasite Elimination (TPE) in Namibiae.  
563 *ClinicalTrials.gov* Available at: <https://clinicaltrials.gov/ct2/show/NCT02610400>.
- 564 25. Medzihradsky, O. F. *et al.* Study protocol for a cluster randomised controlled factorial design  
565 trial to assess the effectiveness and feasibility of reactive focal mass drug administration and  
566 vector control to reduce malaria transmission in the low endemic setting of Namibia. *BMJ*  
567 *Open* **8**, e019294 (2018).
- 568 26. *National malaria case management guidelines.* (Republic of Namibia, Ministry of Health and  
569 Social Services, 2014).
- 570 27. Wu, L. *et al.* Optimisation and standardisation of a multiplex immunoassay of diverse  
571 Plasmodium falciparum antigens to assess changes in malaria transmission using sero-  
572 epidemiology. *Wellcome Open Res.* **4**, 26 (2019).
- 573 28. Nibsc. First WHO Reference Reagent for Anti-malaria (Plasmodium falciparum) human  
574 serum.
- 575 29. Ondigo, B. N. *et al.* Estimation of Recent and Long-Term Malaria Transmission in a Population  
576 by Antibody Testing to Multiple Plasmodium falciparum Antigens. *J. Infect. Dis.* **210**, 1123–  
577 1132 (2014).
- 578 30. Drakeley, C. J. *et al.* Estimating medium- and long-term trends in malaria transmission by  
579 using serological markers of malaria exposure. *Proc. Natl. Acad. Sci. U. S. A.* **102**, 5108–13  
580 (2005).
- 581 31. Hayes, R. & Moulton, L. *Cluster Randomised Trials.* (Chapman & Hall/CRC Press, 2009).
- 582 32. Dabira, E. D. *et al.* Mass drug administration with high-dose ivermectin and  
583 dihydroartemisinin-piperaquine for malaria elimination in an area of low transmission with  
584 high coverage of malaria control interventions: Protocol for the massiv cluster randomized  
585 clinical trial. *JMIR Res. Protoc.* **9**, (2020).
- 586 33. Chandramohan, D. *et al.* Seasonal malaria vaccination: protocol of a phase 3 trial of seasonal  
587 vaccination with the RTS,S/AS01E vaccine, seasonal malaria chemoprevention and the  
588 combination of vaccination and chemoprevention. *BMJ Open* **10**, e035433 (2020).
- 589 34. Bridges, D. J. *et al.* Community-led Responses for Elimination (CoRE): A study protocol for a  
590 community randomized controlled trial assessing the effectiveness of community-level,  
591 reactive focal drug administration for reducing Plasmodium falciparum infection prevalence  
592 and incidence in Southern Province, Zambia. *Trials* **18**, (2017).
- 593 35. Longley, R. J. *et al.* Development and validation of serological markers for detecting recent  
594 Plasmodium vivax infection. *Nat. Med.* **26**, 741–749 (2020).
- 595 36. Yman, V. *et al.* Distinct kinetics in antibody responses to 111 Plasmodium falciparum antigens  
596 identifies novel serological markers of recent malaria exposure. *medRxiv* (2020).
- 597 37. *Immunization, Vaccines and Biologicals A Guide to the Design and Conduct of Dengue*  
598 *Serosurveys.* (2017).
- 599 38. Martin, D. L. *et al.* The use of serology for trachoma surveillance: Current status and priorities  
600 for future investigation. *PLoS Negl. Trop. Dis.* **14**, e0008316 (2020).
- 601 39. Won, K. Y. *et al.* Use of antibody tools to provide serologic evidence of elimination of  
602 lymphatic filariasis in the Gambia. *Am. J. Trop. Med. Hyg.* **98**, 15–20 (2018).
- 603 40. Arnold, B. F. *et al.* Measuring changes in transmission of neglected tropical diseases, malaria,  
604 and enteric pathogens from quantitative antibody levels. *PLoS Negl. Trop. Dis.* **11**, e0005616  
605 (2017).
- 606 41. Arnold, B. F., Scobie, H. M., Priest, J. W. & Lammie, P. J. Integrated serologic surveillance of  
607 population immunity and disease transmission. *Emerg. Infect. Dis.* **24**, 1188–1194 (2018).
- 608 42. A Cluster-randomized Trial to Evaluate the Efficacy of Wolbachia-Infected Aedes Aegypti  
609 Mosquitoes in Reducing the Incidence of Arboviral Infection in Brazil (EVITA Dengue) - Full  
610 Text View - ClinicalTrials.gov. Available at: <https://clinicaltrials.gov/ct2/show/NCT04514107>.

- 611 (Accessed: 22nd February 2021)  
612 43. Indriani, C. *et al.* Baseline characterization of dengue epidemiology in Yogyakarta City,  
613 Indonesia, before a randomized controlled trial of wolbachia for arboviral disease control.  
614 *Am. J. Trop. Med. Hyg.* **99**, 1299–1307 (2018).  
615 44. Collins, M. H. Serologic tools and strategies to support intervention trials to combat Zika virus  
616 infection and disease. *Tropical Medicine and Infectious Disease* **4**, (2019).  
617  
618