

Characterization of Age and Polarity at Onset in Bipolar Disorder

Janos L. Kalman^{1,2,3}, MD,* Loes M. Olde Loohuis⁴, PhD,* Annabel Vreeker⁵, PhD,* Andrew McQuillin⁶, PhD, Eli A. Stahl⁷, PhD, Douglas Ruderfer^{8,9,10}, PhD, Maria Grigoriou-Serbanescu¹¹, PhD, Georgia Panagiotaropoulou¹², M.Sc., Stephan Ripke^{13,14}, M.D., Ph.D., Tim B Bigdeli^{15,16}, PhD, Frederike Stein¹⁷, M.A., Tina Meller^{17,18}, Dr. rer. nat., M.Sc., Susanne Meinert¹⁹, M.Sc., Helena Pelin^{3,20}, M.Sc., Fabian Streit²¹, PhD, Sergi Papiol^{1,2,22}, PhD, Mark J Adams²³, PhD, Rolf Adolfsson²⁴, MD, PhD, Kristina Adorjan^{1,2}, MD, Ingrid Agartz^{25,26,27}, MD, PhD, Sofie R. Aminoff^{28,29}, PhD, Heike Anderson-Schmidt³⁰, Dipl.-Psych, Ole A. Andreassen^{29,31}, MD, PhD, Raffaella Ardau³², Jean-Michel Aubry^{33,34}, MD, Ceylan Balaban³⁵, M.Sc., Nicholas Bass⁶, MRCPsych, Bernhard T Baune¹⁹, MD, PhD, Frank Bellivier^{36,37,38}, MD, PhD, Antonio Benabarre³⁹, MD, PhD, Susanne Bengesser⁴⁰, MD, PhD, Wade H Berrettini⁴¹, MD, PhD, Marco P. Boks⁴², MD, PhD, Evelyn J Bromet⁴³, PhD, Katharina Brosch¹⁷, M.Sc., Monika Budde¹, Dipl.-Psych, William Byerley⁴⁴, MD, Pablo Cervantes⁴⁵, MD, Catina Chillotti³², Sven Cichon^{46,47,48,49}, Prof. Dr. rer.nat., Scott R Clark^{50,51}, MD, PhD, Ashley L. Comes^{1,3}, PhD, Aiden Corvin⁵², MD, PhD, William Coryell⁵³, MD, Nick Craddock⁵⁴, MD, David W. Craig⁵⁵, PhD, Paul E. Croarkin⁵⁶, D.O., M.S., Cristiana Cruceanu³, PhD, Piotr M. Czerski⁵⁷, PhD, Nina Dalkner⁴⁰, PhD, Udo Dannlowski¹⁹, MD, PhD, Franziska Degenhardt^{47,58}, MD, J. Raymond DePaulo⁵⁹, MD, Srdjan Djurovic^{60,61}, PhD, Howard J. Edenberg⁶², PhD, Mariam Al Eissa⁶, PhD, Torbjørn Elvsåshagen⁶³, MD, PhD, Bruno Etain^{36,37,38}, MD, PhD, Ayman H Fanous^{15,16}, MD, Frederike Fellendorf⁴⁰, MD, Alessia Fiorentino⁶, PhD, Andreas J Forstner^{47,64}, MD, Mark A. Frye⁵⁶, MD, Janice M. Fullerton^{65,66}, PhD, Katrin Gade⁶⁷, MD, Julie Garnham⁶⁸, BN RN, Kirov George⁵⁴, PhD, MD, Elliot Gershon^{69,70}, MD, Michael Gill⁵², MD, Fernando S. Goes⁵⁹, MD, Katherine Gordon-Smith⁷¹, PhD, Paul Grof^{72,73}, MD, PhD, Jose Guzman-Parra⁷⁴, PhD, Tim Hahn¹⁹, PhD, Maria Hake¹, Dipl.-Psych., Roland Hasler^{33,34}, PhD, Urs Heilbronner¹, PhD, Stephane Jamain^{75,76}, PhD, Esther Jimenez³⁹, MSc, PhD, Ian Jones⁵⁴, PhD, MD, Lisa Jones⁷¹, MD, Lina Jonsson⁷⁷, MSc, Rene S Kahn⁷⁸, MD, PhD, John R. Kelsoe⁷⁹, MD, James L. Kennedy^{73,80,81}, MD, Tilo Kircher¹⁷, MD, Sarah Kittel-Schneider^{35,82}, MD, Farah Klöhn-Saghatolislam¹, MD, MBA, James A Knowles^{83,84}, MD, PhD, Thorsten Manfred Kranz³⁵, PhD, Trine Vik Lagerberg^{31,63}, PhD, Mikael Landén^{77,85}, MD, PhD, William B Lawson⁸⁶, MD, Marion Leboyer^{75,76}, MD, PhD, Qingqin S Li⁸⁷, PhD, Mario Maj⁸⁸, MD, PhD, Dolores Malaspina^{78,89}, MD, MS, MSPH, Mirko Manchia^{90,91}, MD, PhD, Fermin Mayoral⁷⁴, PhD, MDF, Susan L McElroy⁹², MD, Melvin G McInnis⁹³, MD, Andrew M McIntosh²³, MD, FRCPsych, Helena Medeiros⁸⁴, MSW, LICSW, Ingrid Melle^{27,28}, MD, PhD, Vihra Milanova⁹⁴, MD, PhD, Philip B. Mitchell⁹⁵, MD, Palmiero Monteleone⁹⁶, MD, Alessio Maria Monteleone⁸⁸, MD, Markus M Nöthen⁴⁷, MD, Tomas Novak⁹⁷, PhD, John J Nurnberger⁹⁸, MD, PhD, Niamh O'Brien⁶, PhD, Kevin S. O'Connell^{28,29}, PhD, Claire O'Donovan^{99,100}, MB BchBAO, Michael C O'Donovan⁵⁴, PhD, MD, Nils Opel¹⁹, MD, Abigail Ortiz^{101,102}, MSW, MPH, Michael J Owen⁵⁴, PhD, MD, Erik Pålsson⁷⁷, Carlos Pato⁸⁴, MD, PhD, Michele T Pato⁸⁴, MD, Joanna Pawlak⁵⁷, PhD, MD, Julia-Katharina Pfarr¹⁷, M.Sc., Claudia Pisanu¹⁰³, MD, James B. Potash⁵⁹, MD, Mark H Rapaport¹⁰⁴, MD, Daniela Reich-Erkelenz¹, M.A., Andreas Reif³⁵, MD, Eva Reininghaus⁴⁰, MD, PhD, Jonathan Repple¹⁹, MD, Hélène Richard-Lepouriel³³, MD, Marcella Rietschel²¹, MD, Kai Ringwald¹⁷, M.Sc., Gloria Roberts⁹⁵, PhD, Guy Rouleau^{105,106}, MD, PhD, FRCP, FRSC, Sabrina Schaupp¹, M.Sc., William A Scheftner¹⁰⁷, MD, Simon Schmitt¹⁷,

M.Sc., Peter R. Schofield^{65,66}, PhD DSc, K Oliver Schubert^{50,108}, MD, Eva C. Schulte^{1,2}, MD, PhD, Barbara Schweizer⁵⁹, R.N., B.S., Fanny Senner^{1,2}, MD, Giovanni Severino¹⁰³, MD, Sally Sharp⁶, PhD, Claire Slaney⁶⁸, RN, Olav B. Smeland^{28,29}, MD, PhD, Janet L Sobell¹⁰⁹, PhD, Alessio Squassina^{99,103}, Ph.D. MSci, Pavla Stopkova⁹⁷, PhD, John Strauss^{73,80,81}, MD, Alfonso Tortorella¹¹⁰, PhD, Gustavo Turecki^{45,111}, MD, PhD, Joanna Twarowska-Hauser⁵⁷, MD, PhD, Marin Veldic⁵⁶, MD, Eduard Vieta³⁹, MD, PhD, John B. Vincent^{73,80,81}, PhD, Wei Xu¹¹², PhD, Clement C. Zai^{73,80,81,113,114}, PhD, Peter P. Zandi⁵⁹, M.H.S., M.P.H., Ph.D., Maria Del Zompo^{32,103}, MD, Psychiatric Genomics Consortium (PGC) BD Working Group, International Consortium on Lithium Genetics (ConLiGen), Colombia-US Cross Disorder Collaboration in Psychiatric Genetics, Arianna Di Florio⁵⁴, PhD, MD, Jordan W. Smoller^{115,116}, MD, Sc.D., Joanna M. Biernacka^{56,117}, PhD, Francis J. McMahon¹¹⁸, MD, Martin Alda^{97,99}, MD, Bertram Muller-Myhsok²⁰, MD, Nikolaos Koutsouleris^{2,20,119}, MD, Peter Falkai², MD, Nelson B. Freimer^{4,120}, MD, Till F.M. Andlauer¹²¹, PhD,⁺ Thomas G Schulze^{1,21,30,122,123}, MD,⁺ Roel A. Ophoff^{4, 120,124}, PhD,⁺

66

67 AFFILIATION LIST AT THE END OF THE MANUSCRIPT

68

69

70 * joint first authors

71 + joint last authors

72

73 **Corresponding Authors:**

74

75 **Janos L. Kalman, MD**

76 Institute of Psychiatric Phenomics and Genomics (IPPG),

77 University Hospital, LMU Munich,

78 Nussbaumstr. 7.

79 D-80336 Munich, Germany

80 Tel: +4989440053403

81 Email: janos.kalman@med.uni-muenchen.de

82

83 **Loes M. Olde Loohuis, PhD**

84 Center for Neurobehavioral Genetics

85 Semel Institute for Neuroscience and Human Behavior,

86 University of California Los Angeles,

87 760 Westwood Plaza,

88 CA 90095 Los Angeles, USA

89 Tel: +13107942723

90 Email: loldeloohuis@mednet.ucla.edu

91

92

93 **Running title:** The genetics of disease onset in Bipolar Disorder

94

95 **Keywords:** bipolar disorder, age at onset, polarity at onset, GWAS, polygenic score

96

97

98

99 **Word count:** 3711

RELEVANCE STATEMENT:

In the largest study to systematically characterize age at onset (N=12977) and polarity at onset (N=6773) in bipolar disorder, we describe an association between illness onset characteristics and indicators of severity, confirming their clinical relevance. Our study shows that that early illness onset is associated with genetic liability for a broad range of psychiatric disorders. However, we also highlight systematic differences in age at onset across cohorts, continents, and phenotype definitions. This heterogeneity results in reduced heritability and affects genetic analyses, underscoring the need for the development of standardized phenotype definitions.

Abstract

Background: Studying the phenotypic and genetic characteristics of age and polarity at onset (AAO, PAO) in bipolar disorder (BD) can provide new insights into disease pathology and facilitate the development of screening tools.

Aims: To examine the genetic architecture of AAO and PAO and their association with BD disease characteristics.

Methods: Genome-wide association studies (GWASs) and polygenic score (PGS) analyses of AAO (N=12977) and PAO (N=6773) were conducted in BD patients of 34 cohorts and a replication sample (N=2237). The association of onset with disease characteristics was investigated in two of these cohorts.

Results: Earlier AAO was associated with an increased risk of psychotic symptoms, suicidality, and fewer episodes. A depressive onset correlated with lifetime suicidality and a manic onset with delusions and manic episodes. Systematic differences in AAO between cohorts and continents of origin were observed. This was also reflected in SNV-based heritability estimates, with higher heritabilities for stricter onset definitions. Increased polygenic scores for autism spectrum disorder ($\beta=-0.34$ years, SE=0.08), major depression ($\beta=-0.34$ years, SE=0.08), schizophrenia ($\beta=-0.39$ years, SE=0.08), and educational attainment ($\beta=-0.31$ years, SE=0.08) were associated with an earlier AAO. The AAO GWAS identified one significant locus, but this finding did not replicate. Neither GWAS nor PGS analyses yielded significant associations with PAO.

Conclusions: AAO and PAO are associated with indicators of BD severity. Individuals with an earlier onset show an increased polygenic liability for a broad spectrum of psychiatric traits. Systematic differences in AAO across cohorts, continents, and phenotype definitions introduce significant heterogeneity, affecting analyses.

139 MAIN TEXT

140 1. Introduction

141 Bipolar disorder (BD) is highly heritable and affects approximately 1% of the
 142 population (1). It has a recurrent or chronic course and is associated with
 143 psychosocial impairment and reduced functioning, and it is a leading cause of global
 144 disease burden (2,3). Individuals usually experience their first (hypo)manic or
 145 depressive episode of BD in adolescence or early adulthood, but often they are not
 146 diagnosed until five to ten years later (4), especially in case of earlier age at onset or
 147 a depressive index episode (5). Early illness onset is associated with a more severe
 148 disease course and greater impairment across a wide range of mental and physical
 149 disorders and is a useful prognostic marker (6–9). However, pathophysiological
 150 processes leading to a disorder are thought to begin long before the first symptoms
 151 appear (10,11). Investigating the factors contributing to age and polarity (i.e., either a
 152 (hypo)manic or depressive episode) at onset could thus improve our understanding
 153 of disease pathophysiology and facilitate development of personalized screening and
 154 preventive measures. Accordingly, age and polarity at BD onset are considered as
 155 suitable phenotypes for genetic analyses. Genome-wide association studies
 156 (GWASs) have improved our understanding of the genetic architecture of
 157 susceptibility to BD; however, the genetic determinants of age and polarity at onset
 158 remain largely unknown. Evidence suggests that patients with an early age at onset
 159 carry a stronger genetic loading for BD risk (12). For example, an earlier parental
 160 age at onset increases familial risk for BD and is one of the strongest predictors of 5-
 161 year illness onset in affected offspring (12–14). Thus far, GWASs for age at BD
 162 onset have been underpowered (15–17), and a study on 8610 cases found no
 163 significant evidence for a heritable component contributing to onset age (16).

Previous research suggested that a higher genetic risk burden for schizophrenia (SZ) may be associated with earlier age at onset of BD (16), but this finding was not replicated (18–20). Moreover, a recent study did not find an association of BD PGS with age at onset (21). Polarity of onset was shown to cluster in families (22), but the genetic architecture of polarity at onset has not yet been investigated. To fill these knowledge gaps, we performed comprehensive analyses of age and polarity at BD onset in the largest sample studied to date by (i) examining phenotype definitions and associations, (ii) conducting systematic GWASs, and (iii) investigating whether genetic load for neuropsychiatric disorders and traits contributes to age and polarity at BD onset.

2. Methods

2.1. Sample for the discovery GWAS

Participants with a BD diagnosis and age at onset information were selected from independent datasets, including those previously submitted to the Psychiatric Genomics Consortium (PGC) BD Working Group (18,23) and the International Consortium on Lithium Genetics (ConLiGen) (24). These consortia aggregate data from many cohorts worldwide. Our analyses comprised 34 cohorts with 12977 BD European ancestry cases from Europe, North America, and Australia. For a description of sample ascertainment, see the Supplementary Material. The authors assert that all procedures contributing to this work comply with the ethical standards of the relevant national and institutional committees on human experimentation and with the Helsinki Declaration of 1975, as revised in 2008. All procedures involving human subjects/patients were approved by the local ethics committees, and written informed consent was obtained from all subjects/patients.

2.1.1. Definition of age at onset

The definition of age at BD onset differed by cohort. To enhance cross-cohort comparability, we grouped the definitions into four broad categories (*Supplementary Table S1*): (1) *Diagnostic interview*: age at which the patient first experienced a (hypo)manic, mixed, or major depressive episode according to a standardized diagnostic interview; (2) *Impairment/help-seeking*: age at which symptoms began to cause subjective distress or impaired functioning or at which the patient first sought psychiatric treatment; (3) *Pharmacotherapy*: age at first administration of medication; (4) *Mixed*: a combination of the above-mentioned definitions. Across definitions, participants younger than eight years at onset were excluded (n=279) because of the uncertainty about the reliability of retrospective recall of early childhood onset.

The distribution of age at onset was highly skewed and differed greatly across the cohorts (*Table 1 and Fig. 1*). Therefore, we transformed age at onset in each cohort by rank-based inverse normal transformation and used this normalized variable as the primary dependent variable in all genetic analyses. To facilitate interpretability of effect sizes, we also report results of the corresponding untransformed age at onset.

2.1.2. Definition of polarity at onset

For each cohort, polarity at onset was defined by comparing the age at the first (hypo)manic and first depressive episode or using the polarity variable provided by the cohort. Specifically, patients were divided into three subgroups: (1) (hypo)mania before depression (PAO-M), (2) depression before (hypo)mania (PAO-D), and (3) mixed (PAO-X). The third category included patients with mixed episodes and those with a first (hypo)manic and depressive episode within the same year (*Table 1*). In the primary analysis, we combined (hypo)mania and mixed onset cases and

assigned this as the reference category. In secondary analyses, we excluded the mixed cases.

2.2. Disease characteristics

We performed phenotypic analyses of disease onset in BD type I patients from three cohorts: the Dutch Bipolar cohort (N=1313) (25) and the German PsyCourse (26) and FOR2107 (27) cohorts, which were analyzed jointly (N=346). We analyzed the following disease characteristics, which were previously reported as being associated with disease onset and were assessed in a similar way across cohorts (28): lifetime delusions, lifetime hallucinations, history of suicide attempt, suicidal ideation, current smoking, educational attainment, living together with a partner, and frequency of manic and depressive episodes per year. For more detailed information, see the *Supplementary Material* and *Supplementary Table S9*.

2.3. Genetic analyses

We analyzed age at onset in 34 cohorts comprising 12977 BD patients. We performed a GWAS on these cohorts and attempted to replicate any findings in a GWAS on six additional cohorts with 2237 BD patients. For details on the datasets, including phenotype definitions and distributions, see *Table 1*, *Fig. 1*, and *Supplementary Table S1*.

2.3.1. Genotype data quality control and imputation

Cohorts were genotyped according to local protocols. Individual genotype data of all discovery-stage cohorts were processed with the PGC Rapid Imputation and Computational Pipeline for GWAS (RICOPILI) (29) with the default parameters for standardized quality control (QC), imputation, and analysis. Before imputation, filters for the removal of variants included non-autosomal chromosomes,

missingness ≥ 0.02 , and a Hardy-Weinberg equilibrium test $P < 1 \times 10^{-10}$. Individuals were removed if they showed a genotyping rate ≤ 0.98 , absolute deviation in autosomal heterozygosity of $F_{het} \geq 0.2$, or a deviation > 4 SDs from the mean in any of the first eight multidimensional scaling (MDS) ancestry components within each cohort. From genetic duplicates (assessed with the genetic identity-by-state matrix) and relatives ($\pi_{hat} > 0.2$) across all samples, only the case with more complete phenotypic information on AAO and PAO, sex, and diagnosis was retained. Imputation was performed by IMPUTE2 with the Haplotype Reference Consortium reference panel (30).

2.3.2. Genome-wide association studies

We conducted separate GWASs for all cohorts containing 40 or more individuals in RICOPI/PLINK (29,31), with sex, BD subtype, and the first eight ancestry components as covariates. Sample sizes are provided in *Supplementary Tables S2, S7*. The results showed no inflation of test statistics (*Supplementary Table S2*). We combined the GWASs in METAL by fixed-effects meta-analysis (32). The primary analyses were transformed age at onset (analyzed by linear regression), and polarity at onset (analyzed by logistic regression). Secondary analyses included GWASs stratified by age at onset definition and continent of origin.

For the meta-analysis summary statistics, we applied the following variant-level post-QC parameters: imputation INFO score ≥ 0.9 , MAF ≥ 0.05 , and successfully imputed/genotyped in \geq half of the cohorts.

We estimated power to replicate our original GWAS finding using the *pwr* package in R. Given the parameters from the locus identified through our discovery GWAS (beta = 0.075, allele frequency = 0.32) and a standardized phenotype, we had 76% power

to detect the effect in our sample size of 2237 at an alpha level of 0.1. For comparison, we had 57% power to detect the effect in our discovery sample.

2.3.3. Polygenic Scoring

We calculated polygenic scores (PGS) based on prior GWAS of Attention-Deficit/Hyperactivity Disorder (ADHD) (33), Autism Spectrum Disorder (ASD) (34), BD (18), Educational Attainment (EA, measured as “years in education”) (35), Major Depression (MD) (36), and schizophrenia (37) (*Supplementary Table S3*). PGS weights were estimated with PRS-CS (38), with six scores per genome-wide association study (GWAS; with $\phi = 1 \times 10^{-1}$, 1×10^{-2} , 1×10^{-3} , 1×10^{-4} , 1×10^{-5} , and 1×10^{-6}). We tested the associations of the PGS with the AAO and PAO by linear and logistic regressions, respectively, with the same covariates as in the GWAS analyses. The significance threshold was Bonferroni-corrected for 96 tests ($\alpha = 0.05/[6 \phi \text{ thresholds} \times 8 \text{ traits} \times 2 \text{ phenotypes}] = 5.2 \times 10^{-4}$).

2.3.3. Heritability analyses

We assessed the variance in age and polarity at onset explained by genotyped variants (single-nucleotide variant [SNV]-based heritability, h^2_{SNV}). For individual cohorts with more than 1000 samples, we estimated h^2_{SNV} with GCTA GREML (39,40). Here, we validated the robustness of the h^2_{SNV} estimate with the mean of 1000× resampling of 95% of the sample. For meta-analysis summary statistics with sample sizes >3000, we estimated h^2_{SNV} by linkage disequilibrium (LD) score regression (41). The 95% CIs were constrained to a minimum of 0 and a maximum of 1.

3. Results

3.1. Heterogeneity of age and polarity at onset across cohorts

Among the four definitions of age at onset across the 34 cohorts, impairment/help-seeking was the most common in Europe and diagnostic interview the most common in North America (*Table 1, Fig. 1A-B*). Across cohorts, the median age at onset was 21 years (range of medians: 16-30 years; *Fig. 1A-B*). The median untransformed age at onset differed significantly between BD subtypes (type I, 21 years; type II, 22 years; Kruskal-Wallis test $P=1.8 \times 10^{-4}$; *Supplementary Table S6*), age at onset definitions (diagnostic interview, 19 years; impairment/help-seeking, 23 years; pharmacotherapy, 30 years; mixed, 22 years; $P=2.96 \times 10^{-191}$), and continent of origin (Europe, 24 years; North America, 18 years; and Australia, 19.5 years; $P=2.0 \times 10^{-263}$). These differences across continents remained significant when including onset definitions and BD subtype in a multivariable regression model, indicating that they are not entirely driven by differences between diagnostic instruments (*Supplementary Table S6*).

The majority of patients had a depression-first polarity at onset in both Europe and North America (57% and 59%, respectively; $P=0.17$ test of proportion). Depression-first cases were less frequent in the impairment/help-seeking than in the diagnostic interview category (55% and 60%, respectively; $P=4.5 \times 10^{-4}$, *Supplementary Fig. S1*).

SUGGESTED POSITION OF TABLE 1 and FIGURE 1

3.2. Analyses of disease characteristics

In a meta-analysis of the Dutch and German samples, earlier age at onset was significantly associated with a higher probability of lifetime delusions, hallucinations, suicide attempts, suicidal ideation, lower educational attainment, and not living together (*Table 2, Supplementary Tables S4 and S5*). Later age at onset was positively significantly correlated with a higher number of manic and depressive

episodes per year (see secondary analyses in the *Supplementary Material*). Moreover, a (hypo)manic onset was significantly associated with a greater likelihood of delusions and more manic episodes per year, whereas a depressive onset was associated with a higher probability of suicidal ideation and lifetime suicide attempts.

SUGGESTED POSITION OF TABLE 2

3.3. Genome-wide association studies

In our GWAS meta-analysis of age at onset using all 34 cohorts, one locus reached genome-wide significance (rs1610275 on chromosome 16; minor allele G frequency=0.319, $\beta=0.075$ SDs, SE=0.014, $P=3.39 \times 10^{-8}$, Fig. 2A, *Supplementary Table S7, Supplementary Fig. S2*). This SNV mapped to an intron of the brain-expressed gene *FTO* (alpha-ketoglutarate dependent dioxygenase, Fig. 2B). However, this association was not replicated in an independent sample of six cohorts (*Supplementary Table S7, Supplementary Fig. S2*). In this replication sample (N=2237), we had 76% power to replicate this SNV at $P=0.1$.

In the GWAS of polarity at onset, no variant was genome-wide significant in either primary (PAO-M/-X vs PAO-D) or secondary (PAO-M vs PAO-D) analyses (*Supplementary Fig. S3*).

We calculated PGSs for age and polarity at onset using leave-one-out summary statistics from these GWASs. The age-at-onset PGS was nominally significantly associated with age at onset ($\beta=0.23$ years, SE=0.08, $P=0.0087$, $\phi=0.1$, Fig. 2C-D) for five of six tested ϕ parameters but did not withstand correction for multiple testing (*Supplementary Table S8*). The polarity-at-onset PGS was not associated with the polarity at onset (*Supplementary Fig. S4*).

SUGGESTED POSITION OF FIGURE 2

3.4. SNV-based heritability of the investigated phenotypes

Using the GWAS summary statistics, we estimated the SNV-based heritability h^2_{SNV} by LD score regression (*Fig. 1C*). We estimated h^2_{SNV} directly from genotype data in the only cohort large enough for this analysis, *wtccc* ($h^2_{SNV}=0.63$, $P=0.0026$) and validated the robustness of this estimate by resampling ($h^2_{SNV}=0.62$, resampling 95% CI=0.15-1.00). The h^2_{SNV} estimates decreased when cohorts, phenotype definitions, and continents were combined (e.g., “diagnostic interview” in North America: $h^2_{SNV}=0.16$ [95% CI=0-0.40], “impairment/help seeking” in Europe: $h^2_{SNV}=0.03$ [95% CI=0-0.25], all combined $h^2_{SNV}=0.05$ [95% CI=0-0.12]). Because the sample sizes were smaller, we could not estimate the h^2_{SNV} of impairment/help seeking in North America and diagnostic interview in Europe. For depressed vs. (hypo)manic and mixed polarity at onset, h^2_{SNV} was 0.17 (95% CI=0.05-0.29) on the observed scale.

3.5. Associations of PGSs with age and polarity at onset

We analyzed whether PGSs for five psychiatric disorders and EA were associated with earlier age at onset (*Fig. 2C-D, Supplementary Table S8*). After correcting for 96 tests, higher PGSs for ASD ($\beta=-0.34$ years per 1 SD increase in PGS, $SE=0.08$, $P=9.85\times 10^{-6}$), MD ($\beta=-0.34$, $SE=0.08$, $P=1.40\times 10^{-6}$), SZ ($\beta=-0.39$, $SE=0.08$, $P=2.91\times 10^{-6}$), and EA ($\beta=-0.31$, $SE=0.08$, $P=5.58\times 10^{-5}$) were significantly associated with an earlier BD age at onset. This was not the case for ADHD or BD PGS. No PGS was significantly associated with polarity at onset (*Supplementary Fig. S4, Supplementary Table S8*).

4. Discussion

Our study represents the largest and most comprehensive characterization of disease onset in BD to date. It highlights the clinical relevance of age and polarity at

onset in BD by demonstrating how these phenotypes are associated with several indicators of illness severity. We found that higher PGS for ASD, MD, SZ, and EA were associated with an earlier age at onset. Thereby we demonstrated that the BD age at onset has a polygenic etiology. Individuals with an earlier age at onset harbor increased genetic liability for a broad spectrum of psychiatric disorders and related traits. However, we show significant heterogeneity of age at onset (and, partly, polarity at onset) across cohorts, continents, and age-at-onset definitions and demonstrate the challenges for genetic analyses that occur in the presence of substantial phenotypic heterogeneity. First, heritability estimates differed for criteria used to define age at onset and decreased when combining multiple cohorts. Second, a single genome-wide significant variant, identified in the age-at-onset discovery GWAS, did not replicate in an independent dataset.

A striking finding of our study was the systematic difference in the age at onset distribution across cohorts, continents, and assessment strategies. The definition of age at onset correlated strongly with the continent, with diagnostic interview being mainly used in North America and impairment/help-seeking in Europe. Using multivariable regression, we showed that the continent-level differences cannot fully be explained by the age-at-onset assessment strategy and that both factors contribute significantly to the heterogeneity (Supplementary Table S6) (4). However, variations in the demographic structure of analyzed populations may have biased the assessed age at onset of BD, contributing to the observed differences (42). Although prior research has identified age at onset differences across continents (e.g., the incidence of early onset BD is higher in the US than in Europe (43,44)), this study is the first to systematically assess this heterogeneity

across many cohorts with different ascertainment strategies and demonstrate how it may reduce statistical power in genetic analyses.

Interestingly, these systematic differences in age at onset phenotypes are reflected in heritability estimates: We observed the highest SNV-based heritability h^2_{SNV} when onset was established by diagnostic interview and the lowest when it was captured with more health system-specific and subjective measurements, such as item 4 of the Operational Criteria Checklist for Psychotic Illness (impairment/help-seeking). Moreover, h^2_{SNV} estimates approached zero when all samples were combined in our primary analysis ($h^2_{SNV}=0.05$; 95% CI=0-0.12), underscoring the strong impact of phenotypic heterogeneity. Thus, we not only showed systematic heterogeneity in a clinically relevant psychiatric phenotype across cohorts but also provided direct evidence for how this heterogeneity can hamper genetic studies. Notably, a recent investigation demonstrated that the phenotyping method (e.g., diagnostic interview vs. self-report) significantly influenced heritability estimates, GWAS results, and PGS performance in analyses of MD susceptibility, with broader phenotype definitions resulting in lower heritability estimates (45). Nevertheless, the significant results in our PGS association analyses confirmed that a significant genetic component of age at onset exists.

For polarity at disease onset, the relative proportion of patients reporting a depressive index episode did not differ across continents but did differ across instruments, i.e., a (hypo)manic onset was more common if age at onset was based on impairment/help-seeking instead of diagnostic interview.

Although our discovery GWAS identified a genome-wide significant locus for age at onset, the lack of replication suggests that this finding may have been a false-positive. Of note, our replication power analysis did not account for the phenotypic

and genetic heterogeneity across the cohorts and may thus have underestimated the necessary sample size. Moreover, the replication sample was more ethnically diverse than the discovery sample, reducing statistical power. While the effect of the age at onset PGS on the trait measure itself was substantial (0.23 years per 1 SD change in the PGS), the association was only nominally significant.

Possibly, the rank-based inverse-normal transformation of the age at onset affected the GWAS and heritability analyses. We conducted this transformation because, first, the original age at onset distribution was highly skewed and thus not suitable for linear regression and, second, the age at onset differed significantly between cohorts, which could have biased the meta-analysis. By transforming the data, however, only the rank and not the absolute differences in onset between patients was maintained, reducing interpretability of the phenotype and the genetic effects.

Higher PGSs for SZ, MD, ASD, and EA were significantly associated with a lower age at onset, confirming a genetic component for age at onset. This finding supports the hypothesis that earlier age of onset, in addition to potentially being driven by onset-specific modifier genes, is influenced by a transdiagnostic liability for psychiatric disorders. In contrast to several other disorders (e.g. multiple sclerosis and late-onset Alzheimer's disease), where the strongest genetic risk factors for disease liability were also the most important genetic factors associated with earlier disease onset (8,46), we did not find a significant association between BD PGS and age at BD onset, confirming a previous study (21). Importantly, the sample sizes of both the SZ and MD GWASs were larger than those of the BD GWAS, improving the predictive power of these PGSs compared to the BD PGS.

Our finding of a significant relationship of higher EA PGS with an earlier age at onset may seem counterintuitive. However, several studies found a significant association between higher EA and BD (47,48). In addition, a recent study demonstrated a positive genetic correlation and causal relationship between high EA and BD (49). Our findings show that high EA is not only a risk factor for BD but is also associated with an earlier onset.

In our analyses of polarity at onset, the small sample size and dichotomous phenotype reduced statistical power. None of the tested PGSs were significantly associated with polarity at onset, and the GWAS did not identify genome-wide significant loci. However, we observed significant h^2_{SNV} estimates for PAO-M/-X vs. PAO-D, providing substantial evidence that genetic factors contribute to the polarity at BD onset.

The success of GWASs in the study of complex, polygenic traits relies on ever larger sample sizes and harmonized phenotype definitions and analysis techniques (50). As previously shown for depression (45), our study suggests that heterogeneity of phenotype definitions decreases the ability to identify genetic risk profiles that contribute to clinically relevant BD phenotypes. In addition to phenotype definitions, other factors that may limit cross-cohort comparability of the assessed phenotypes include demographic differences, cultural differences in diagnostic practice, and the uncertainty and measurement errors associated with recall bias, limited interrater reliability, and differences across health care systems (43,51–53). In our study, we performed both SNV-level and risk score associations using a structured meta-analysis, which mitigates some of the noise introduced by phenotypic heterogeneity. However, we are unable to account for differences in underlying genetic etiology of

the phenotypes across cohorts. This heterogeneity is an important limitation of our study and should be considered in future phenotype analyses.

Our phenotype analyses confirmed the clinical relevance of disease onset phenotypes in BD. Age at BD onset was associated with important illness severity indicators, such as suicidality, positive symptoms, and achieving a lower level of education, thereby replicating findings of previous studies (25,28,54). Furthermore, patients with a depressive BD onset had an increased probability of lifetime suicidality, while those with a (hypo)manic onset were more likely to experience delusions and manic episodes (55–57). Contrary to previous evidence in a US (but not a French) sample, we observed that an earlier onset was associated with fewer episodes per illness year (56). Of note, when not normalizing for the illness duration, the age at onset was positively correlated with the number of episodes.

4.1. Conclusion

Phenotypes of BD onset are clinically important trait measures that represent the well-known clinical and biological heterogeneity of this severe psychiatric disorder. Genetic analysis of age and polarity at onset may lead to a better understanding of the biological risk factors underlying mental illness and support clinical assessment and prediction. Our study provides significant evidence of a genetic contribution to age and polarity at BD onset but also demonstrates the need for systematic harmonization of clinical data on BD onset in future studies. The coordinated efforts of international consortia and our growing ability to harness the rich phenotypic information stored in electronic health records will provide an unprecedented pool of phenotypic information on an increasingly diverse patient population (58–60). We expect that future genetic studies of age and polarity at

onset will make major contributions toward our understanding of the etiology of BD and other psychiatric disorders.

5. Author contributions

Concept and design: Kalman, Olde Loohuis, Vreeker, Andlauer, Schulze, and Ophoff. Analysis and interpretation of data: Kalman, Olde Loohuis, Vreeker, Andlauer

Drafting of the manuscript: Kalman, Olde Loohuis, Vreeker, Andlauer

Supervision, and critical revision of the manuscript: Schulze, Ophoff, McMahon, Smoller, Alda.

All other authors provided data, contributed ideas and suggestions for analyses, interpreted results and revised the final manuscript.

6. Acknowledgments

The authors thank Jacquie Klesing, Board-certified Editor in the Life Sciences (ELS), for editing assistance with the manuscript.

BOMA-Australia sample: We thank Gin Mahli, Colleen Loo, and Micheal Breaskpear for their contribution to clinical assessments of a subset of patients and also Andrew Frankland for his work in collating clinical record data.

502 WTCCC sample: This study makes use of data generated by the Wellcome Trust
 503 Case-Control Consortium. A full list of the investigators who contributed to the
 504 generation of the data is available from www.wtccc.org.uk.
 505 French sample: We thank the psychiatrists and psychologists who participated in the
 506 clinical assessment of patients in France (C. Henry, S. Gard, JP Kahn, L Zanouy, RF
 507 Cohen and O. Wajsbrot-Elgrabli) and thank the patients for their participation.
 508

7. Funding

Loes M. Olde Loohuis: NIH K99/R00 MH116115.

Eli Stahl: NIH U01MH109536; E.S. is now employed by the Regeneron Genetics Center.

Andrew McQuillin: Medical Research Council, Grant/Award Numbers: G0500791, G0701007, G0801038, G1000708, G9623693N; Stanley Center for Psychiatric Research at the Broad Institute

Douglas Ruderfer: R01MH116269

Maria Grigoriu-Serbanescu: UEFISCDI, Romania, several grants

Tim B Bigdeli: NIH MH085548, MH085542, MH104564

Fabian Streit: BMBF grant 01EW1810 ERA-Net Neuron "Synschiz", BMBF grant 01ZX1614G e:Med Integrant

Mark J Adams: Wellcome Trust 104036/Z/14/Z, MRC MC_PC_17209

Rolf Adolfsson: Swedish Research Council (2009-33891-68296-196) and the Swedish Federal Government under the LUA/ALF agreement (ALF; RV-161691)

Ole A. Andreassen: Norwegian Research Council, KG Jebsen Stiftelsen, South-Eastern Norway Health Authority

Ceylan Balaban: BMBF "BipoLife" Subproject TPP1

Frank Bellivier: INSERM (Institut National de la Sante et de la Recherche Medicale - C0829), AP-HP (Assistance Publique des Hopitaux de Paris - RBM0436), Fondation FondaMental (RTRS Sante Mentale), Labex Bio-PSY (Investissements d'Avenir program managed by the ANR under reference ANR-11-IDEX- 0004-02).

Antonio Benabarre: Thanks the support of the Spanish Ministry of Science and Innovation (PI17/01122)

Wade Berrettini: R01 MH078156

534 Evelyn J Bromet: NIH MH085548, MH085542, MH104564

535 Sven Cichon: European Union Horizon 2020 Research and Innovation Programme

536 (grant 785907 (HBP SGA2)), BMBF grant 01ZX1314Ae:Med Integrument, Swiss

537 National Science Foundation (SNSF) grant 156791

538 William Coryell: R01 MH078154

539 Nick Craddock: Wellcome Trust (grant #078901)

540 David Craig: R01 MH078159

541 Paul E. Croarkin: National Institute of Mental Health (NIMH) R01 MH113700

542 Udo Dannlowski: This work was funded by the German Research Foundation (DFG,

543 grant FOR2107 DA1151/5-1 and DA1151/5-2 to UD; SFB-TRR58, Projects C09 and

544 Z02 to UD) and the Interdisciplinary Center for Clinical Research (IZKF) of the

545 medical faculty of Munster (grant Dan3/012/17 to UD).

546 Franziska Degenhardt: German Federal Ministry of Education and Research (BMBF)

547 within the e:Med programme (grant COMMITMENT) and the EU COST (European

548 Cooperation in Science and Technology) programme (COST Action EnGagE

549 CA17130).

550 Bruno Etain: INSERM (Institut National de la Sante et de la Recherche Medicale -

551 C0829), AP-HP (Assistance Publique des Hopitaux de Paris - RBM0436), Fondation

552 FondaMental (RTRS Sante Mentale), Labex Bio-PSY (Investissements dAvenir

553 program managed by the ANR under reference ANR-11-IDEX- 0004-02).

554 Ayman H Fanous: NIH MH085548, MH085542, MH104564

555 Janice M. Fullerton: National Health and Medical Research Council (Australia) grants

556 1037196,1063960, 1066177; and The Janette Mary ONeil Research Fellowship

557 Julie Garnham: Canadian Institutes of Health Research (grant #166098); Dalhousie

558 Medical Research Foundation, Genome Atlantic, Lindsay family fund

559 Elliot Gershon: R01 MH078153

560 Tim Hahn: TH was supported by the German Research Foundation (DFG grants
561 HA7070/2-2, HA7070/3, HA7070/4) and the Interdisciplinary Center for Clinical
562 Research (IZKF) of the medical faculty of Munster (MzH3/020/20).

563 Stephane Jamain: INSERM (Institut National de la Sante et de la Recherche
564 Medicale - C0829), AP-HP (Assistance Publique des Hopitaux de Paris - RBM0436),
565 Fondation FondaMental (RTRS Sante Mentale), Labex Bio-PSY (Investissements
566 dAvenir program managed by the ANR under reference ANR-11-IDEX- 0004-02).

567 Esther Jimenez: EJ thanks the support of the Spanish Ministry of Science and
568 Innovation (PI15/00283, PI18/00805) integrated into the Plan Nacional de I+D+I and
569 co-financed by the ISCIII-Subdireccin General de Evaluacin and the Fondo Europeo
570 de Desarrollo Regional (FEDER); the Instituto de Salud Carlos III; the CIBER of
571 Mental Health (CIBERSAM); the Secretaria dUniversitats i Recerca del Departament
572 dEconomia i Coneixement (2017 SGR 1365), the CERCA Programme, and the
573 Departament de Salut de la Generalitat de Catalunya for the PERIS grant
574 SLT006/17/00357.

575 Ian Jones: Wellcome Trust (grant #078901)

576 Lisa Jones: Wellcome Trust (grant #078901)

577 John R. Kelsoe: R01 MH078151

578 Tilo Kircher: This work was funded by the German Research Foundation (DFG, grant
579 FOR2107 KI588/14-1 and FOR2107 KI588/14-2 to TK)

580 George Kirov: Recruiement of the Bulgarian Trios was funded by the Janssen
581 Research Foundation

582 James A Knowles: NIH MH085548, MH085542, MH104564

583 Thorsten Kranz: BMBF "BipoLife" Subproject TPP1

584 Trine Vik Lagerberg: Norwegian Research Council (grant #288542)

585 Mikael Landen: The Stanley Center for Psychiatric Research, Broad Institute from a

586 grant from Stanley Medical Research Institute, the Swedish Research Council (2018-

587 02653), the Swedish foundation for Strategic Research (KF10-0039), the Swedish

588 Brain foundation (FO2020-0261), and the Swedish Federal Government under the

589 LUA/ALF agreement (ALF 20170019, ALFGBG-716801).

590 William Lawson: R01 MH078161

591 Marion Leboyer: INSERM (Institut National de la Sante et de la Recherche Medicale

592 - C0829), AP-HP (Assistance Publique des Hopitaux de Paris - RBM0436),

593 Fondation FondaMental (RTRS Sante Mentale), Labex Bio-PSY (Investissements

594 dAvenir program managed by the ANR under reference ANR-11-IDEX- 0004-02).

595 Dolores MAlaspina: NIH MH085548, MH085542, MH104564

596 Melvin McInnis: R01 MH078162

597 Andrew M McIntosh: Wellcome Trust 104036/Z/14/Z, MRC MC_PC_17209

598 Helena Medeiros: NIH MH085548, MH085542, MH104564

599 Ingrid Melle: "Regional Health Authority South-Eastern Norway (grants #

600 2015088,2018093)"

601 Vihra Milanova: Recruitment of the Bulgarian Trios was funded by the Janssen

602 Research Foundation

603 Philip B. Mitchell: National Health and Medical Research Council (Australia) grants

604 1037196, 1177991

605 John Nurnberger: R01 MH078152

606 Carlos Pato: NIH MH085548, MH085542, MH104564

607 Michele T Pato: NIH MH085548, MH085542, MH104564

608 James B. Potash: R01 MH078157

609 Mark H Rapaport: NIH MH085548, MH085542, MH104564

610 Andreas Reif: BMBF "BipoLife" Subproject TPP1

611 Marcella Rietschel: BMBF grant 01EW1810 ERA-Net Neuron "Synschiz", BMBF

612 grant 01EW1904 ERA-Net Neuron "Embed", BMBF grant 01ZX01909A e:Med

613 SysmedSUD, BMBF grant 01ZX1614G e:Med Integrant

614 Gloria Roberts: National Health and Medical Research Council (Australia) grants

615 1037196

616 Guy Rouleau: Canadian Institutes of Health Research (grant #166098)

617 William A. Scheftner: R01 MH078155

618 Peter R. Schofield: National Health and Medical Research Council (Australia) grants

619 1037196,1063960, 1176716

620 Janet L Sobell: NIH MH085548, MH085542, MH104564

621 John Strauss: Canadian Institutes of Health Research, MOP-172013

622 Gustavo Turecki: Canadian Institutes of Health Research (grant #166098)

623 Eduard Vieta: EV thanks the support of the Spanish Ministry of Science and

624 Innovation (PI15/00283, PI18/00805) integrated into the Plan Nacional de I+D+I and

625 co-financed by the ISCIII-Subdireccin General de Evaluacin and the Fondo Europeo

626 de Desarrollo Regional (FEDER); the Instituto de Salud Carlos III; the CIBER of

627 Mental Health (CIBERSAM); the Secretaria dUniversitats i Recerca del Departament

628 dEconomia i Coneixement (2017 SGR 1365), the CERCA Programme, and the

629 Departament de Salut de la Generalitat de Catalunya for the PERIS grant

630 SLT006/17/00357.

631 John B. Vincent: Canadian Institutes of Health Research, MOP-172013

632 Jordan W Smoller: R01MH063445

633 Francis J. McMahon: Funded in part by the Intramural Research Program of the
634 NIMH (ZIA MH002843)

635 Martin Alda: Canadian Institutes of Health Research (grant #166098); Dalhousie
636 Medical Research Foundation, Genome Atlantic, Lindsay family fund

637 Till. F. M. Andlauer: German Federal Ministry of Education and Research (BMBF)
638 through the DIFUTURE consortium of the Medical Informatics Initiative Germany
639 (grant 01ZZ1804A) and the Integrated Network IntegraMent, under the auspices of
640 the e:Med Programme (grant 01ZX1614J), as well as the European Unions Horizon
641 2020 Research and Innovation Programme (grant MultipleMS, EU RIA 733161)

642 The Collection of the Dutch cohort was funded through NIMH R01MH090553
643 awarded to Dr. Ophoff.

644 The collection of the Colombian samples was funded through NIMH R01 MH113078
645 awarded to Drs. Lopez-Jaramillo, Bearden and Freimer.

646 The collection of the *BOMA-Australia* sample (*bip_bmau_eur*) was supported by the
647 Australian National Medical and Health Research Council (NHMRC) Program Grant
648 1037196 and Project Grants 1063960 and 1066177. DNA was extracted by Genetic
649 Repositories Australia, an Enabling Facility that was supported by NHMRC Enabling
650 Grant 401184. We gratefully acknowledge the Janette Mary ONeil Research
651 Fellowship (to JMF). We acknowledge support from NHMRC Investigator Grants
652 (Leadership 3) to PBM (1177991) and PRS (1176716).

653 Funding for the project was provided by the Wellcome Trust under award 076113,
654 085475 and 090355.

655 The work by the French group was supported by INSERM (Institut National de la
656 Sante et de la Recherche Medicale - C0829), AP-HP (Assistance Publique des
657 Hopitaux de Paris - RBM0436), the Fondation FondaMental (RTRS Sante Mentale),

658 and the labex Bio-PSY (Investissements d'Avenir program managed by the ANR
659 under reference ANR-11-IDEX- 0004-02).
660

8. Declaration of Interest

Amare T. Azmeraw: Dr Amare has received 2020-2022 NARSAD Young Investigator Grant from the Brain & Behaviour Research Foundation.

Ole A. Andreassen: Speaker's honorarium Sunovion, Lundbeck. Consultant HealthLytix

Bernhard Baune: Honoraria: Lundbeck, Janssen, LivaNova, Servier

Carrie Bearden: Novartis Scientific Advisory Board

Clark Scott: Honoraria and Investigator Initiated project funding from Janssen-Cilag Australia, Lundbeck-Otsuka Australia

J. Raymond DePaulo: owns stock in CVS Health; JRD was unpaid consultant for Myriad Neuroscience 2017 & 2019

Michael C. O'Donovan: Research unrelated to this manuscript supported by a collaborative research grant from Takeda Pharmaceuticals

Bruno Etain: Honoraria for Sanofi

Mark A. Frye: Grant Support Assurex Health, Mayo Foundation, Medibio Consultant (Mayo) Actify Neurotherapies, Allergan, Intra-Cellular Therapies, Inc., Janssen, Myriad, Neuralstem Inc., Sanofi, Takeda, Teva Pharmaceuticals

Per Hoffmann: Employee of Life&Brain GmbH, Member of the Scientific Advisory Board of HMG Systems Engineering GmbH

Mikael Landen: Speaker's honoraria Lundbeck pharmaceuticals

Andrew M McIntosh: Research funding from The Sackler Trust, speaker fees from Illumina and Janssen

Philip B. Mitchell: Remuneration for lectures in China on bipolar disorder research by Sanofi (Hangzhou)

John Nurnberger: Investigator for Janssen

Benjamin M. Neale: Is a member of the scientific advisory board at Deep Genomics and RBNC Therapeutics. A consultant for Camp4 Therapeutics, Takeda Pharmaceutical and Biogen.

Andreas Reif: Speaker's honoraria / Advisory boards: Janssen, Shire/Takeda, Medice, SAGE and Servier

Eli Stahl: now employed by the Regeneron Genetics Center.

Kato Tadafumi: Honoraria: Kyowa Hakko Kirin Co., Ltd., Eli Lilly Japan K.K., Otsuka Pharmaceutical Co., Ltd., GlaxoSmithKline K.K., Taisho Pharma Co., Ltd., Taisho Pharmaceutical Co., Ltd., Taisho Toyama Pharmaceutical Co., Ltd., Dainippon Sumitomo Pharma Co., Ltd., Meiji Seika Pharma Co., Ltd., Pfizer Japan Inc., Mochida Pharmaceutical Co., Ltd., Shionogi & Co., Ltd., Janssen Pharmaceutical K.K., Janssen Asia Pacific, Yoshitomiyakuhin, Astellas Pharma Inc., Nippon Boehringer Ingelheim Co. Ltd., MSD K.K., Kyowa Pharmaceutical Industry Co., Ltd., Takeda Pharmaceutical Co., Ltd., Mitsubishi Tanabe Pharma Corporation, Eisai Co., Ltd. Grants: Takeda Pharmaceutical Co., Ltd., Dainippon Sumitomo Pharma Co., Ltd., Otsuka Pharmaceutical Co., Ltd., Shionogi & Co., Ltd., Eisai Co., Ltd., Mitsubishi Tanabe Pharma Corporation.

Eduard Vieta: Has received grants and served as consultant, advisor or CME speaker for the following entities: AB-Biotics, Abbott, Allergan, Angelini, Dainippon Sumitomo Pharma, Ferrer, Gedeon Richter, Janssen, Lundbeck, Otsuka, Sage, Sanofi-Aventis, Sunovion, and Takeda.

None of the other Authors reported any biomedical financial interests or potential conflicts of interest.

9. Availability of results

Summary statistics for our meta-analysis of the GWAS cohort samples are available through the PGC (<https://www.med.unc.edu/pgc/download-results/>).

10. Author details (affiliations)

¹ Institute of Psychiatric Phenomics and Genomics (IPPG), University Hospital, LMU Munich, Munich, Germany

² Department of Psychiatry and Psychotherapy, University Hospital Munich

³ International Max Planck Research School for Translational Psychiatry, Munich, Germany

⁴ Center for Neurobehavioral Genetics, Semel Institute for Neuroscience and Human Behavior, University of California Los Angeles, Los Angeles, USA

⁵ Department of Child and Adolescent Psychiatry and Psychology, Erasmus MC, The Netherlands

⁶ Division of Psychiatry, University College London, London, GB

⁷ Division of Psychiatric Genomics, Mount Sinai School of Medicine, New York NY 10029 USA

⁸ Division of Genetic Medicine, Department of Medicine, Vanderbilt Genetics Institute, Vanderbilt University Medical Center

⁹ Department of Biomedical Informatics, Vanderbilt University Medical Center

¹⁰ Department of Psychiatry and Behavioral Sciences, Vanderbilt University Medical Center

¹¹ Alexandru Obregia Clinical Psychiatric Hospital, Bucharest, Romania

¹² Department of Psychiatry and Psychotherapy, Charite - Universitätsmedizin

¹³ Analytic and Translational Genetics Unit, Massachusetts General Hospital, Boston MA 02114, USA

¹⁴ Stanley Center for Psychiatric Research, Broad Institute of MIT and Harvard, Cambridge MA 02142, USA

¹⁵ Department of Psychiatry and Behavioral Sciences, SUNY Downstate Health Sciences University, Brooklyn, NY, US

¹⁶ VA NY Harbor Healthcare System, Brooklyn, NY, US

¹⁷ Department of Psychiatry and Psychotherapy, Philipps-University Marburg, Germany

¹⁸ Center for Mind, Brain and Behavior (CMBB), Marburg, Germany

¹⁹ University of Munster, Department of Psychiatry

²⁰ Max Planck Institute of Psychiatry, Munich, Germany

²¹ Department of Genetic Epidemiology in Psychiatry, Central Institute of Mental Health, Medical Faculty Mannheim, Heidelberg University, Mannheim, Germany

²² Centro de Investigación Biomedica en Red de Salud Mental (CIBERSAM), Barcelona, Spain.

²³ Division of Psychiatry, University of Edinburgh

²⁴ Department of Clinical Sciences, Medical Faculty, Umeå University SE-901 87 Umeå

756 ²⁵ Department of Clinical Neuroscience, Centre for Psychiatry Research, Karolinska
757 Institutet, Stockholm, SE
758 ²⁶ Department of Psychiatric Research, Diakonhjemmet Hospital, Oslo, NO
759 ²⁷ NORMENT Centre, Division of Mental Health and Addiction, Institute of Clinical
760 Medicine and Diakonhjemmet Hospital, University of Oslo, Oslo, NO
761 ²⁸ Division of Mental Health and Addiction, Oslo University Hospital, Oslo, Norway
762 ²⁹ NORMENT Centre, Inst of Clinical Medicine, University of Oslo, Oslo, Norway
763 ³⁰ Department of Psychiatry and Psychotherapy, University Medical Center
764 Göttingen, Göttingen, Germany
765 ³¹ Division of Mental Health and Addiction, Oslo University Hospital, Oslo, Norway
766 ³² Unit of Clinical Pharmacology, University Hospital Agency of Cagliari, Cagliari,
767 Italy
768 ³³ Geneva University Hospitals, Department of Psychiatry
769 ³⁴ University of Geneva, Faculty of medicine
770 ³⁵ Department of Psychiatry, Psychosomatic Medicine and Psychotherapy,
771 University Hospital Frankfurt, Frankfurt am Main, Germany
772 ³⁶ Universite de Paris, Paris, France
773 ³⁷ INSERM UMRS 1144, Paris, France
774 ³⁸ APHP, DMU Neurosciences, GHU Lariboisière Fernand Widal, Departement de
775 Psychiatrie, Paris, France
776 ³⁹ Hospital Clinic, University of Barcelona, IDIBAPS, CIBERSAM, Barcelona,
777 Catalonia, Spain
778 ⁴⁰ Department of Psychiatry and Psychotherapeutic Medicine, Medical University
779 Graz, Graz, Austria
780 ⁴¹ Psychiatry, University of Pennsylvania, Philadelphia, PA, US
781 ⁴² Psychiatry, UMC Utrecht Brain Center, Utrecht, NL
782 ⁴³ Department of Psychiatry, Stony Brook University, Stony Brook, NY, USA
783 ⁴⁴ Psychiatry, University of California San Francisco, San Francisco, CA, US
784 ⁴⁵ Department of Psychiatry, McGill University, Montreal, Canada
785 ⁴⁶ Department of Biomedicine, University of Basel, Basel, Switzerland
786 ⁴⁷ Institute of Human Genetics, University of Bonn, School of Medicine & University
787 Hospital Bonn, Bonn, Germany
788 ⁴⁸ Institute of Medical Genetics and Pathology, University Hospital Basel, Basel,
789 Switzerland
790 ⁴⁹ Institute of Neuroscience and Medicine (INM-1), Research Centre Jülich, Jülich,
791 Germany
792 ⁵⁰ Discipline of Psychiatry, University of Adelaide, Australia
793 ⁵¹ Basil Hetzel Institute, Woodville, South Australia, Australia
794 ⁵² Department of Psychiatry & Trinity Translational Medicine Institute, Trinity College
795 Dublin, Ireland
796 ⁵³ University of Iowa Hospitals and Clinics, Iowa City, IA, US
797 ⁵⁴ Medical Research Council Centre for Neuropsychiatric Genetics and Genomics,
798 Division of Psychological Medicine and Clinical Neurosciences
799 ⁵⁵ Translational Genomics, USC, Los Angeles, CA, US
800 ⁵⁶ Department of Psychiatry and Psychology, Mayo Clinic, Rochester, MN, US
801 ⁵⁷ Department of Psychiatric Genetics, Poznan University of Medical Sciences,
802 Poznan, Poland
803 ⁵⁸ Department of Child and Adolescent Psychiatry, Psychosomatics and
804 Psychotherapy, University Hospital Essen, University of Duisburg-Essen, Duisburg,
805 Germany

806 ⁵⁹ Department of Psychiatry and Behavioral Sciences, Johns Hopkins University
807 ⁶⁰ Department of Medical Genetics, Oslo University Hospital Ullevål, Oslo, NO
808 ⁶¹ NORMENT, Department of Clinical Science, University of Bergen, Bergen, NO
809 ⁶² Department of Biochemistry and Molecular Biology, Indiana University School of
810 Medicine, Indianapolis, IN, USA
811 ⁶³ NORMENT, Division of Mental Health and Addiction, Oslo University Hospital,
812 Oslo, Norway
813 ⁶⁴ Centre for Human Genetics, University of Marburg, Marburg, Germany
814 ⁶⁵ Neuroscience Research Australia
815 ⁶⁶ School of Medical Sciences, University of New South Wales
816 ⁶⁷ Department of Psychiatry and Psychotherapy, University Medical Center
817 Göttingen, Germany
818 ⁶⁸ Nova Scotia Health Authority, Halifax, Canada
819 ⁶⁹ Department of Psychiatry and Behavioral Neuroscience, University of Chicago,
820 Chicago, IL, US
821 ⁷⁰ Department of Human Genetics, University of Chicago, Chicago, IL, US
822 ⁷¹ Psychological Medicine, University of Worcester, UK
823 ⁷² Mood Disorders Centre of Ottawa, Ottawa, ON, Canada
824 ⁷³ Dept of Psychiatry, University of Toronto, Toronto, ON, M5T 1R8, Canada
825 ⁷⁴ Mental Health Department, University Regional Hospital, Biomedicine Institute
826 (IBIMA), Málaga, Spain
827 ⁷⁵ Universite Paris Est Creteil, Creteil, France
828 ⁷⁶ INSERM U 955, Neuropsychiatrie Translationnelle, Creteil, France
829 ⁷⁷ Department of Psychiatry and Neurochemistry, Institute of Neuroscience and
830 Physiology, the Sahlgrenska Academy at the University of Gothenburg, Gothenburg,
831 Sweden
832 ⁷⁸ Department of Psychiatry, Icahn School of Medicine at Mount Sinai, New York,
833 NY, US
834 ⁷⁹ Department of Psychiatry, University of California San Diego, La Jolla, CA USA
835 ⁸⁰ The Campbell Family Mental Health Research Institute, Centre for Addiction and
836 Mental Health, Toronto, ON, M5T 1R8, Canada
837 ⁸¹ Institute of Medical Science, University of Toronto, Toronto, ON, M5S 1A8,
838 Canada
839 ⁸² Department of Psychiatry, Psychotherapy and Psychosomatics, University
840 Hospital Würzburg, Würzburg, Germany
841 ⁸³ Cell Biology, SUNY Downstate Medical Center College of Medicine, Brooklyn, NY,
842 US
843 ⁸⁴ Institute for Genomic Health, SUNY Downstate Medical Center College of
844 Medicine, Brooklyn, NY, US
845 ⁸⁵ Department of Medical Epidemiology and Biostatistics, Karolinska Institutet,
846 Stockholm, Sweden
847 ⁸⁶ Department of Psychiatry and Behavioral Sciences, Howard University Hospital,
848 Washington, DC, US
849 ⁸⁷ Neuroscience, Janssen Research & Development, LLC, Titusville, NJ 08560, USA
850 ⁸⁸ Department of Psychiatry, University of Campania "Luigi Vanvitelli", Naples, Italy
851 ⁸⁹ Department of Genetics & Genomics, Icahn School of Medicine at Mount Sinai,
852 Unit of Psychiatry, Department of Public Health, Clinical & Molecular Medicine,
853 University of Cagliari, Cagliari, Italy
854 ⁹¹ Department of Pharmacology, Dalhousie University, Halifax, Nova Scotia, Canada
855 ⁹² Research Institute, Lindner Center of HOPE, Mason, OH, US

856 ⁹³ Department of Psychiatry, University of Michigan, Ann Arbor, MI, US
857 ⁹⁴ Psychiatric Clinic, Alexander University Hospital, Sofia, Bulgaria
858 ⁹⁵ School of Psychiatry, University of New South Wales
859 ⁹⁶ Department of Medicine, Surgery and Dentistry "Scuola Medica Salernitana",
860 University of Salerno, Baronissi, Salerno, Italy
861 ⁹⁷ National Institute of Mental Health, Klecany, Czech Republic
862 ⁹⁸ Psychiatry, Indiana University School of Medicine, Indianapolis, IN, US
863 ⁹⁹ Department of Psychiatry, Dalhousie University, Halifax, Canada
864 ¹⁰⁰ Dalhousie University
865 ¹⁰¹ Centre for Addiction and Mental Health, Toronto, Canada
866 ¹⁰² University of Toronto
867 ¹⁰³ Department of Biomedical Science, Section of Neuroscience & Clinical
868 Pharmacology, University of Cagliari, Cagliari, Italy
869 ¹⁰⁴ Department of Psychiatry and Behavioral Sciences, Emory University, Atlanta,
870 GA
871 ¹⁰⁵ Montreal Neurological Institute, Montreal, Canada
872 ¹⁰⁶ Department of Neurology, McGill University, Montreal, Canada
873 ¹⁰⁷ Department of Psychiatry, Rush Medical College
874 ¹⁰⁸ Northern Adelaide Mental Health Service, SA Health, Salisbury, South Australia,
875 Australia
876 ¹⁰⁹ Psychiatry and the Behavioral Sciences, University of Southern California, Los
877 Angeles, CA, US
878 ¹¹⁰ Department of Psychiatry, University of Perugia, Perugia, Italy
879 ¹¹¹ Douglas Institute, McGill University, Montreal, Canada
880 ¹¹² Dalla Lana School of Public Health, Biostatistics Division, University of Toronto,
881 Toronto, ON, M5G 2M9, Canada
882 ¹¹³ Laboratory Medicine and Pathobiology, University of Toronto, Toronto, ON, M5S
883 1A8, Canada
884 ¹¹⁴ Harvard T.H. Chan School of Public Health, 677 Huntington Ave, Boston, MA
885 02115, United States
886 ¹¹⁵ Psychiatric and Neurodevelopmental Genetics Unit, Department of Psychiatry
887 and Center for Genomic Medicine, Massachusetts General Hospital USA
888 ¹¹⁶ Stanley Center for Psychiatric Research, Broad Institute of MIT and Harvard,
889 USA
890 ¹¹⁷ Department of Health Sciences Research, Mayo Clinic, Rochester, MN, US
891 ¹¹⁸ Human Genetics Branch, Intramural Research Program, National Institute of
892 Mental Health, Bethesda, MD, US
893 ¹¹⁹ Institute of Psychiatry, Psychology and Neuroscience, Kings College London,
894 United Kingdom
895 ¹²⁰ Human Genetics, University of California Los Angeles, Los Angeles, CA, US
896 ¹²¹ Department of Neurology, Klinikum rechts der Isar, School of Medicine, Technical
897 University of Munich, Munich, Germany
898 ¹²² Department of Psychiatry and Behavioral Sciences, Johns Hopkins University
899 School of Medicine, Baltimore, MD, USA
900 ¹²³ Department of Psychiatry and Behavioral Sciences, SUNY Upstate Medical
901 University, Syracuse, NY, USA
902 ¹²⁴ Psychiatry, Erasmus University Medical Center, Rotterdam, The Netherlands
903
904
905

906

907

908

909 11. Tables and Figures

910 Table 1. Sample characteristics of datasets used in genetic analyses

GWAS stage	Dataset	N	Continent	Diagnosis, % BD-I	Sex, % male	AAO, median (MAD ⁺ , range)	Definition of AAO	PAO*, N (%)
Discovery	wtccc	1452	Europe	89.53%	36.85%	24 (8.9, 9-63)	Impairment / help-seeking	
	tgco2	865	North America	100%	33.64%	17 (5.93, 8-46)	Diagnostic interview	PAO-M: 316 (38.92%); PAO-D: 496 (61.08%)
	gain	797	North America	100%	48.06%	18 (5.93, 8-45)	Diagnostic interview	PAO-M: 135 (18.57%); PAO-D: 440 (60.52%)
	stp1	718	North America	100%	44.01%	16 (5.93, 8-41)	Diagnostic interview	PAO-M: 137 (19.08%); PAO-D: 420 (58.5%)
	gsk1	715	North America	89.51%	36.36%	19 (7.51, 8-52)	Diagnostic interview	PAO-M: 102 (14.61%); PAO-D: 395 (56.59%)
	usc2	681	North America	96.18%	47.58%	18 (7.41, 8-48)	Impairment / help-seeking	
	bonn	638	Europe	99.84%	47.34%	25 (8.9, 9-64)	Impairment / help-seeking	
	ucl2	604	Europe	100%	44.37%	30 (11.86, 9-60)	Pharmacotherapy	PAO-M: 47 (9.96%); PAO-D: 209 (44.28%)
	bmg3	455	Europe	57.14%	40.66%	24 (10.38, 10-62)	Impairment / help-seeking	PAO-M: 43 (16.35%); PAO-D: 159 (60.46%)
	m&m's	449	Europe	74.83%	52.12%	23 (10.38, 8-65)	Mixed	PAO-M: 73 (17.14%); PAO-D: 238 (55.87%)
	uclo	439	Europe	100%	39.86%	22 (7.41, 8-51)	Impairment / help-seeking	PAO-M: 54 (14.25%); PAO-D: 197 (51.98%)
	fran	411	Europe	77.62%	41.36%	22 (7.41, 10-58)	Diagnostic interview	
	euoR	410	Europe	75.85%	44.15%	22 (9.64, 11-59)	Mixed	
	hal2	355	North America	71.55%	42.54%	23 (8.9, 8-56)	Diagnostic interview	PAO-M: 102 (29.65%); PAO-D: 213 (61.92%)
	ume4	354	Europe	69.21%	37.85%	20 (8.9, 8-63)	Diagnostic interview	PAO-M: 54 (14.25%); PAO-D: 197 (51.98%)
	swa2	344	Europe	81.10%	41.86%	23 (10.38, 10-70)	Impairment / help-seeking	
	bmpo	319	Europe	78.06%	39.18%	28 (11.86, 10-63)	Impairment / help-seeking	PAO-M: 41 (16.33%); PAO-D: 150 (59.76%)

	top7	301	Europe	62.79%	41.53%	19 (7.41, 8-49)	Diagnostic interview	
	may1	257	North America	100%	45.14%	20 (8.9, 8-62)	Diagnostic interview	PAO-M: 34 (13.23%); PAO-D: 142 (55.25%)
	bmsp	248	Europe	94.76%	45.56%	22 (7.41, 9-57)	Impairment / help-seeking	PAO-M: 24 (10.04%); PAO-D: 93 (38.91%)
	bmau	245	Australia	79.18%	40.82%	19 (7.41, 8-55)	Diagnostic interview	PAO-M: 46 (20.18%); PAO-D: 125 (54.82%)
	edi1	244	Europe	99.18%	42.62%	20 (5.93, 13-50)	Diagnostic interview	
	rom3	226	Europe	100%	41.15%	25 (10.38, 12-59)	Diagnostic interview	PAO-M: 91 (40.27%); PAO-D: 134 (59.29%)
	butr	204	Europe	100%	40.2%	22 (5.19, 13-44)	Impairment / help-seeking	
	euol	191	Europe	74.87%	31.41%	24 (8.9, 13-67)	Diagnostic interview	PAO-M: 48 (27.43%); PAO-D: 98 (56%)
	ageu	178	Europe	90.45%	39.33%	21 (7.41, 8-51)	Impairment / help-seeking	
	mich	169	North America	100%	31.36%	18 (5.93, 8-45)	Diagnostic interview	PAO-M: 42 (24.85%); PAO-D: 84 (49.7%)
	naom	159	North America	84.91%	44.65%	18 (7.41, 8-66)	Mixed	PAO-M: 30 (28.85%); PAO-D: 51 (49.04%)
	bmg2	152	Europe	59.87%	35.53%	27 (10.38, 13-63)	Impairment / help-seeking	
	top8	111	Europe	55.86%	37.84%	18 (7.41, 8-49)	Diagnostic interview	
	h66x	92	Europe	82.61%	36.96%	30 (10.38, 9-55)	Mixed	
	auom	85	Australia	88.24%	45.88%	25 (10.38, 8-64)	Diagnostic interview	
	euo2	58	Europe	65.52%	56.9%	26 (8.9, 18-57)	Diagnostic interview	
	dub1	51	Europe	100%	54.9%	21 (5.93, 12-45)	Diagnostic interview	
	Summary	12977		88.27%	41.57%	21 (8.9, 8-70)		PAO-M: 1435 (21.19%); PAO-D: 3885 (57.36%)
Replication	ukwa1	1156	Europe	75.17%	38.15%	23 (8.9, 8-74)	Impairment / help-seeking	
	dutch	468	Europe	100%	42.31%	28 (10.38, 11-63)	Pharmacotherapy	
	jst5	186	North America	100%	53.23%	16 (7.41, 8-51)	Unknown	
	colo	176	South America	90.34%	31.82%	20 (11.86, 8-52)	Diagnostic interview	
	bmrom	126	Europe	100%	42.86%	24 (8.9, 12-56)	Diagnostic criteria	

	bdtrs	125	Europe	64%	45.6%	28 (13.34, 8-65)	Impairment / help-seeking	
	Summary	2237		84.40%	40.46%	24 (10.38, 8-74)		
All data		15214		86.26%	41.41%	22 (8.9, 8-74)		

911 *Abbreviations: GWAS, genome-wide association study; BD-I, bipolar disorder type I., AAO, age at onset; MAD, mean absolute*
912 *deviation, PAO, polarity at onset;*

913 **We calculated the mean absolute deviation using 1.4826 as constant.*

914 **We defined three categories of polarity at onset: PAO-M, mania/hypomania before depression; PAO-D, depression before*
915 *mania/hypomania; and PAO-X, mixed. PAO was not available for all patients. The table presents the PAO-M and PAO-D subgroups*
916 *and their percentage within the individual cohorts.*

917 Table 2. The association of age and polarity at onset with disease characteristics in two European BD cohorts

Disease characteristic	AAO					PAO				
	N	Odds ratio	95% CI	Unadjusted P value	Adjusted P value*	N	Odds ratio	95% CI	Unadjusted P value	Adjusted P value
Delusions	1612	0.71	0.64-0.79	1.61×10^{-9}	1.45×10^{-8}	1298	0.62	0.49-0.79	1.04×10^{-4}	6.24×10^{-4}
Hallucinations	1594	0.83	0.74-0.92	3.5×10^{-4}	1.40×10^{-3}	1290	0.93	0.74-1.17	5.22×10^{-1}	1.00×10^0
Current smoking	1594	0.98	0.89-1.09	7.50×10^{-1}	7.50×10^{-1}	1282	1.12	0.89-1.41	3.39×10^{-1}	1.00×10^0
Suicidal ideation	1518	0.79	0.71-0.88	2.31×10^{-5}	1.62×10^{-4}	1280	1.68	1.32-2.13	2.11×10^{-5}	1.48×10^{-4}
Suicide attempt	1537	0.78	0.69-0.88	2.73×10^{-5}	1.64×10^{-4}	1262	1.58	1.24-2.02	2.67×10^{-4}	1.34×10^{-3}
Educational attainment	1636	1.17	1.06-1.29	2.77×10^{-3}	8.31×10^{-3}	1319	1.06	0.85-1.33	5.93×10^{-1}	1.00×10^0
Living together	1357	1.28	1.15-1.44	1.01×10^{-5}	8.08×10^{-5}	-	-	-	-	-
		Estimate**	SE	Unadjusted P value	Adjusted P value*		Estimate	SE	Unadjusted P value	Adjusted P value
Number of manic episodes per illness year	1436	0.11	0.03	7.08×10^{-5}	3.54×10^{-4}	1156	-0.42	0.06	4.68×10^{-13}	3.74×10^{-12}
Number of depressive episodes per illness year	1231	0.07	0.03	1.93×10^{-2}	3.86×10^{-2}	1051	0.12	0.06	4.63×10^{-2}	1.85×10^{-1}

918 Abbreviations: AAO, age at onset; PAO, polarity at onset

919 N: total number of participants from the Dutch and German cohorts

920 The number of manic/depressive episodes was divided by (years of illness)+1. For secondary analyses of the number of episodes not
 921 corrected for the years of illness, see the Supplementary Material.

922 * After Bonferroni-Holm correction. Significant adjusted P values are indicated in bold.

923 ** Unstandardized beta coefficient

924

925

Figure 1: Differences between phenotype definitions and continents across the 34 datasets used for genetic analyses

A: The various datasets used four different definitions for age at onset: diagnostic interview, impairment/help-seeking, pharmacotherapy, and mixed.

B: The untransformed age at onset differed significantly, depending on the phenotype definition used.

C: Estimation of the variance in different phenotype definitions explained by genotyped single-nucleotide variants (h^2_{SNV}). For the cohort *wtccc*, we directly estimated h^2_{SNV} from genotype data in GCTA GREML; we estimated all other heritabilities from GWAS summary statistics in LDSC. The plot shows h^2_{SNV} estimates and SEs.

Abbreviations: P, pharmacotherapy; I, impairment/help-seeking; M, mixed; D, diagnostic interview; *n.s.*, $P > 0.05$; *** $P < 0.001$, SNV, single-nucleotide variant; cont, continent; AAO, age at onset; BD-I, BD type I; PAO, polarity at onset; PAO-M, mania/hypomania before depression; PAO-D, depression before mania/hypomania; PAO-X, mixed.

Figure 2: Results from the genome-wide association study (GWAS) and polygenic score (PGS) analyses of bipolar disorder (BD) age at onset (AAO)

A: Manhattan plot of the discovery-stage GWAS

B: Locus-specific Manhattan plot of the top-associated variant. Mbp, mega base pairs; cM, centi Morgan

C-D: Results from analyses of PGS. For detailed results, see Supplementary Table S8. Significance levels: *n.s.*, $P > 0.05$; Nominal: $P < 0.05$; Bonferroni, below the Bonferroni-corrected significance threshold corrected for 96 tests ($P < 5.2 \times 10^{-4}$).

Abbreviations: ADHD, attention deficit/hyperactivity disorder; ASD, autism spectrum disorder; MD, major depression; SZ, schizophrenia; EA, educational attainment.

C: Associations of PGSs with the age at onset (AAO). For interpretability, the plot shows the untransformed AAO. Significance levels are based on the analyses of the AAO after rank-based inverse normal transformation (which was performed because the distribution of AAO was highly skewed and differed greatly across the study cohorts).

D: Associations of the top vs bottom AAO quartiles with the top vs bottom PGS quartiles. A higher odds ratio (OR) indicates an association with higher AAO.

977

978

979 12. References

- 980 1. Merikangas KR, Jin R, He J-P, Kessler RC, Lee S, Sampson NA, et al.
981 Prevalence and Correlates of Bipolar Spectrum Disorder in the World Mental
982 Health Survey Initiative. Arch Gen Psychiatry [Internet]. 2011 Mar 7 [cited 2018
983 Jul 18];68(3):241. Available from:
984 [http://archpsyc.jamanetwork.com/article.aspx?doi=10.1001/archgenpsychiatry.](http://archpsyc.jamanetwork.com/article.aspx?doi=10.1001/archgenpsychiatry.2011.12)
985 2011.12
- 986 2. Whiteford HA, Degenhardt L, Rehm J, Baxter AJ, Ferrari AJ, Erskine HE, et al.
987 Global burden of disease attributable to mental and substance use disorders:
988 findings from the Global Burden of Disease Study 2010. Lancet [Internet]. 2013
989 Nov [cited 2018 Apr 11];382(9904):1575–86. Available from:
990 <http://linkinghub.elsevier.com/retrieve/pii/S0140673613616116>
- 991 3. Cloutier M, Greene M, Guerin A, Touya M, Wu E. The economic burden of
992 bipolar I disorder in the United States in 2015. J Affect Disord [Internet]. 2018
993 Jan 15 [cited 2018 Oct 23];226:45–51. Available from:
994 <http://www.ncbi.nlm.nih.gov/pubmed/28961441>
- 995 4. Berk M, Dodd S, Callaly P, Berk L, Fitzgerald P, de Castella AR, et al. History
996 of illness prior to a diagnosis of bipolar disorder or schizoaffective disorder. J
997 Affect Disord [Internet]. 2007 Nov [cited 2020 Aug 29];103(1–3):181–6.
998 Available from: <https://pubmed.ncbi.nlm.nih.gov/17324469/>
- 999 5. Dagani J, Signorini G, Nielssen O, Bani M, Pastore A, Girolamo G de, et al.
1000 Meta-analysis of the Interval between the Onset and Management of Bipolar
1001 Disorder. Can J Psychiatry [Internet]. 2017 Apr 26 [cited 2019 May
1002 17];62(4):247–58. Available from:
1003 <http://www.ncbi.nlm.nih.gov/pubmed/27462036>
- 1004 6. Cleynen I, Boucher G, Jostins L, Schumm LP, Zeissig S, Ahmad T, et al.
1005 Inherited determinants of Crohn's disease and ulcerative colitis phenotypes: A
1006 genetic association study. Lancet [Internet]. 2016 [cited 2020 Apr
1007 19];387(10014):156–67. Available from: [https://pubmed-ncbi-nlm-nih-](https://pubmed-ncbi-nlm-nih-gov.treadwell.idm.oclc.org/26490195/)
1008 [gov.treadwell.idm.oclc.org/26490195/](https://pubmed-ncbi-nlm-nih-gov.treadwell.idm.oclc.org/26490195/)
- 1009 7. Bergen SE, O'Dushlaine CT, Lee PH, Fanous AH, Ruderfer DM, Ripke S, et al.
1010 Genetic modifiers and subtypes in schizophrenia: Investigations of age at
1011 onset, severity, sex and family history. Schizophr Res [Internet]. 2014;154(1–
1012 3):48–53. Available from: <http://dx.doi.org/10.1016/j.schres.2014.01.030>
- 1013 8. óNaj AC, Jun G, Reitz C, Kunkle BW, Perry W, Park YS, et al. Effects of multiple
1014 genetic loci on age at onset in late-onset Alzheimer disease: A genome-wide
1015 association study. JAMA Neurol. 2014 Nov 1;71(11):1394–404.
- 1016 9. Rhebergen D, Lamers F, Spijker J, De Graaf R, Beekman ATF, Penninx
1017 BWJH. Course trajectories of unipolar depressive disorders identified by latent
1018 class growth analysis. Psychol Med. 2012;42(7):1383–96.
- 1019 10. Howes OD, Lim S, Theologos G, Yung AR, Goodwin GM, McGuire P. A
1020 comprehensive review and model of putative prodromal features of bipolar
1021 affective disorder [Internet]. Vol. 41, Psychological Medicine. Psychol Med;
1022 2011 [cited 2020 Jul 26]. p. 1567–77. Available from:
1023 <https://pubmed.ncbi.nlm.nih.gov/20836910/>
- 1024 11. Wijnands JMA, Kingwell E, Zhu F, Zhao Y, Högg T, Stadnyk K, et al. Health-
1025 care use before a first demyelinating event suggestive of a multiple sclerosis

- 1026 prodrome: a matched cohort study. *Lancet Neurol* [Internet]. 2017 Jun 1 [cited
1027 2020 Jul 26];16(6):445–51. Available from:
1028 <https://pubmed.ncbi.nlm.nih.gov/28434855/>
- 1029 12. Smoller JW, Finn CT. Family, twin, and adoption studies of bipolar disorder.
1030 *Am J Med Genet Part C Semin Med Genet* [Internet]. 2003 Nov 15 [cited 2020
1031 Jun 8];123C(1):48–58. Available from:
1032 <http://doi.wiley.com/10.1002/ajmg.c.20013>
- 1033 13. Rice J, Reich T, Andreasen NC, Endicott J, Van Eerdewegh M, Fishman R, et
1034 al. The Familial Transmission of Bipolar Illness. *Arch Gen Psychiatry*.
1035 1987;44(5):441–7.
- 1036 14. Hafeman DM, Merranko J, Goldstein TR, Axelson D, Goldstein BI, Monk K, et
1037 al. Assessment of a Person-Level Risk Calculator to Predict New-Onset Bipolar
1038 Spectrum Disorder in Youth at Familial Risk. *JAMA Psychiatry* [Internet]. 2017
1039 Aug 1 [cited 2018 Oct 18];74(8):841. Available from:
1040 <http://archpsyc.jamanetwork.com/article.aspx?doi=10.1001/jamapsychiatry.2017.1763>
1041
- 1042 15. Belmonte Mahon P, Pirooznia M, Goes FS, Seifuddin F, Steele J, Lee PH, et
1043 al. Genome-wide association analysis of age at onset and psychotic symptoms
1044 in bipolar disorder. *Am J Med Genet B Neuropsychiatr Genet* [Internet]. 2011
1045 Apr [cited 2015 Sep 29];156B(3):370–8. Available from:
1046 [http://www.pubmedcentral.nih.gov/articlerender.fcgi?artid=3178836&tool=pmce
1047 ntrez&rendertype=abstract](http://www.pubmedcentral.nih.gov/articlerender.fcgi?artid=3178836&tool=pmcentrez&rendertype=abstract)
- 1048 16. Ruderfer DM, Ripke S, McQuillin A, Boocock J, Stahl EA, Pavlides JMW, et al.
1049 Genomic Dissection of Bipolar Disorder and Schizophrenia, Including 28
1050 Subphenotypes. *Cell* [Internet]. 2018 Jun;173(7):1705–1715.e16. Available
1051 from: <https://linkinghub.elsevier.com/retrieve/pii/S0092867418306585>
- 1052 17. Jamain S, Cichon S, Etain B, Muhleisen TW, Georgi A, Zidane N, et al.
1053 Common and rare variant analysis in early-onset bipolar disorder vulnerability.
1054 *PLoS One* [Internet]. 2014 Jan [cited 2016 Aug 1];9(8):e104326. Available
1055 from:
1056 [http://www.pubmedcentral.nih.gov/articlerender.fcgi?artid=4128749&tool=pmce
1057 ntrez&rendertype=abstract](http://www.pubmedcentral.nih.gov/articlerender.fcgi?artid=4128749&tool=pmcentrez&rendertype=abstract)
- 1058 18. Stahl EA, Breen G, Forstner AJ, McQuillin A, Ripke S, Trubetskoy V, et al.
1059 Genome-wide association study identifies 30 loci associated with bipolar
1060 disorder. *Nat Genet* [Internet]. 2019 [cited 2020 Feb 23];51(5):793–803.
1061 Available from: <http://www.ncbi.nlm.nih.gov/pubmed/31043756>
- 1062 19. Coleman JRI, Gaspar HA, Bryois J, Byrne EM, Forstner AJ, Holmans PA, et al.
1063 The Genetics of the Mood Disorder Spectrum: Genome-wide Association
1064 Analyses of More Than 185,000 Cases and 439,000 Controls. *Biol Psychiatry*
1065 [Internet]. 2020 [cited 2020 May 3]; Available from:
1066 <https://pubmed.ncbi.nlm.nih.gov/31926635/>
- 1067 20. Kalman JL, Papiol S, Forstner AJ, Heilbronner U, Degenhardt F, Strohmaier J,
1068 et al. Investigating polygenic burden in age at disease onset in bipolar disorder:
1069 Findings from an international multicentric study. *Bipolar Disord* [Internet]. 2019
1070 Jun 28;21(1):68–75. Available from: <http://doi.wiley.com/10.1111/bdi.12659>
- 1071 21. Aas M, Bellivier F, Bettella F, Henry C, Gard S, Kahn JP, et al. Childhood
1072 maltreatment and polygenic risk in bipolar disorders. *Bipolar Disord* [Internet].
1073 2020 Mar 1 [cited 2020 Nov 16];22(2):174–81. Available from:
1074 <https://pubmed.ncbi.nlm.nih.gov/31628696/>
- 1075 22. Kassem L, Lopez V, Hedeker D, Steele J, Zandi P, Bipolar Disorder
1076 Consortium NGI, et al. Familiality of Polarity at Illness Onset in Bipolar Affective

- Disorder. Am J Psychiatry [Internet]. 2006 Oct [cited 2018 Nov 15];163(10):1754–9. Available from: <http://www.ncbi.nlm.nih.gov/pubmed/17012686>
23. Ruderfer DM, Ripke S, McQuillin A, Boocock J, Stahl EA, Pavlides JMW, et al. Genomic Dissection of Bipolar Disorder and Schizophrenia, Including 28 Subphenotypes. Cell. 2018;173(7):1705-1715.e16.
24. Schulze TG, Alda M, Adli M, Akula N, Ardaur R, Bui ET, et al. The International Consortium on Lithium Genetics (ConLiGen): an initiative by the NIMH and IGSLI to study the genetic basis of response to lithium treatment. Neuropsychobiology [Internet]. 2010 [cited 2017 Jul 1];62(1):72–8. Available from: <http://www.karger.com/doi/10.1159/000314708>
25. van Bergen AH, Verkooijen S, Vreeker A, Abramovic L, Hillegers MH, Spijker AT, et al. The characteristics of psychotic features in bipolar disorder. Psychol Med [Internet]. 2019 Sep 10 [cited 2020 May 17];49(12):2036–48. Available from: https://www.cambridge.org/core/product/identifier/S0033291718002854/type/journal_article
26. Budde M, Anderson-Schmidt H, Gade K, Reich-Erkelenz D, Adorjan K, Kalman JL, et al. A longitudinal approach to biological psychiatric research: The PsyCourse study. Am J Med Genet B Neuropsychiatr Genet [Internet]. 2019 [cited 2020 Feb 23];180(2):89–102. Available from: <http://www.ncbi.nlm.nih.gov/pubmed/30070057>
27. Kircher T, Wöhr M, Nenadic I, Schwarting R, Schratt G, Alferink J, et al. Neurobiology of the major psychoses: a translational perspective on brain structure and function—the FOR2107 consortium. Eur Arch Psychiatry Clin Neurosci [Internet]. 2019 [cited 2020 May 3];269(8):949–62. Available from: <https://pubmed.ncbi.nlm.nih.gov/30267149/>
28. Perlis RH, Miyahara S, Marangell LB, Wisniewski SR, Ostacher M, DelBello MP, et al. Long-term implications of early onset in bipolar disorder: data from the first 1000 participants in the systematic treatment enhancement program for bipolar disorder (STEP-BD). Biol Psychiatry [Internet]. 2004 May 1 [cited 2020 Feb 22];55(9):875–81. Available from: <http://www.ncbi.nlm.nih.gov/pubmed/15110730>
29. Lam M, Awasthi S, Watson HJ, Goldstein J, Panagiotaropoulou G, Trubetskoy V, et al. RICOPILI: Rapid Imputation for Consortias PIpeLine. Bioinformatics [Internet]. 2020 [cited 2020 May 3];36(3):930–3. Available from: <https://pubmed.ncbi.nlm.nih.gov/31393554/>
30. Howie BN, Donnelly P, Marchini J. A Flexible and Accurate Genotype Imputation Method for the Next Generation of Genome-Wide Association Studies. Schork NJ, editor. PLoS Genet [Internet]. 2009 Jun 19 [cited 2020 May 19];5(6):e1000529. Available from: <https://dx.plos.org/10.1371/journal.pgen.1000529>
31. Purcell S, Neale B, Todd-Brown K, Thomas L, Ferreira MAR, Bender D, et al. PLINK: a tool set for whole-genome association and population-based linkage analyses. Am J Hum Genet [Internet]. 2007 Sep [cited 2017 Aug 5];81(3):559–75. Available from: <http://linkinghub.elsevier.com/retrieve/pii/S0002929707613524>
32. METAL: fast and efficient meta-analysis of genomewide association scans [Internet]. [cited 2020 Jun 14]. Available from: <https://www.ncbi.nlm.nih.gov/pmc/articles/PMC2922887/>
33. Demontis D, Walters RK, Martin J, Mattheisen M, Als TD, Agerbo E, et al.

1128 Discovery of the first genome-wide significant risk loci for attention
1129 deficit/hyperactivity disorder. *Nat Genet.* 2019;51(1):63–75.

1130 34. Grove J, Ripke S, Als TD, Mattheisen M, Walters RK, Won H, et al.
1131 Identification of common genetic risk variants for autism spectrum disorder. *Nat*
1132 *Genet [Internet].* 2019 [cited 2020 Feb 26];51(3):431–44. Available from:
1133 <http://www.ncbi.nlm.nih.gov/pubmed/30804558>

1134 35. Lee JJ, Wedow R, Okbay A, Kong E, Maghzian O, Zacher M, et al. Gene
1135 discovery and polygenic prediction from a genome-wide association study of
1136 educational attainment in 1.1 million individuals. *Nat Genet.* 2018 Aug
1137 1;50(8):1112–21.

1138 36. Howard DM, Adams MJ, Clarke TK, Hafferty JD, Gibson J, Shirali M, et al.
1139 Genome-wide meta-analysis of depression identifies 102 independent variants
1140 and highlights the importance of the prefrontal brain regions. *Nat Neurosci.*
1141 2019 Mar 1;22(3):343–52.

1142 37. Pardiñas AF, Holmans P, Pocklington AJ, Escott-Price V, Ripke S, Carrera N,
1143 et al. Common schizophrenia alleles are enriched in mutation-intolerant genes
1144 and in regions under strong background selection. *Nat Genet.* 2018 Mar
1145 1;50(3):381–9.

1146 38. Ge T, Chen CY, Ni Y, Feng YCA, Smoller JW. Polygenic prediction via
1147 Bayesian regression and continuous shrinkage priors. *Nat Commun [Internet].*
1148 2019 [cited 2020 May 19];10(1). Available from:
1149 [https://pubmed.ncbi.nlm.nih.gov/30992449/?from_single_result=tian+ge+prs+cs](https://pubmed.ncbi.nlm.nih.gov/30992449/?from_single_result=tian+ge+prs+cs&expanded_search_query=tian+ge+prs+cs)
1150 [s&expanded_search_query=tian+ge+prs+cs](https://pubmed.ncbi.nlm.nih.gov/30992449/?from_single_result=tian+ge+prs+cs&expanded_search_query=tian+ge+prs+cs)

1151 39. Yang J, Lee SH, Goddard ME, Visscher PM. GCTA: A tool for genome-wide
1152 complex trait analysis. *Am J Hum Genet.* 2011 Jan 7;88(1):76–82.

1153 40. Yang J, Benyamin B, McEvoy BP, Gordon S, Henders AK, Nyholt DR, et al.
1154 Common SNPs explain a large proportion of the heritability for human height.
1155 *Nat Genet.* 2010 Jul;42(7):565–9.

1156 41. Bulik-Sullivan B, Loh PR, Finucane HK, Ripke S, Yang J, Patterson N, et al. LD
1157 score regression distinguishes confounding from polygenicity in genome-wide
1158 association studies. *Nat Genet.* 2015 Feb 25;47(3):291–5.

1159 42. Heimbuch RC, Matthysse S, Kidd KK. Estimating age-of-onset distribution for
1160 disorders with variable onset. *Am J Hum Genet [Internet].* 1980 [cited 2020 Sep
1161 10];32(4):564–74. Available from: [/pmc/articles/PMC1686126/?report=abstract](https://pubmed.ncbi.nlm.nih.gov/61616126/)

1162 43. Larsson S, Lorentzen S, Mork E, Barrett EA, Steen NE, Lagerberg TV, et al.
1163 Age at onset of bipolar disorder in a Norwegian catchment area sample. *J*
1164 *Affect Disord.* 2010 Jul 1;124(1–2):174–7.

1165 44. Post RM, Luckenbaugh DA, Leverich GS, Altshuler LL, Frye MA, Suppes T, et
1166 al. Incidence of childhood-onset bipolar illness in the USA and Europe. *Br J*
1167 *Psychiatry [Internet].* 2008 Feb [cited 2020 Sep 14];192(2):150–1. Available
1168 from: <https://www.cambridge.org/core>.

1169 45. Cai N, Revez JA, Adams MJ, Andlauer TFM, Breen G, Byrne EM, et al.
1170 Minimal phenotyping yields genome-wide association signals of low specificity
1171 for major depression. *Nat Genet.* 2020 Apr 1;52(4):437–47.

1172 46. Andlauer TFM, Buck D, Antony G, Bayas A, Bechmann L, Berthele A, et al.
1173 Novel multiple sclerosis susceptibility loci implicated in epigenetic regulation.
1174 *Sci Adv [Internet].* 2016 Jun 17 [cited 2017 Aug 22];2(6):e1501678. Available
1175 from: <http://advances.sciencemag.org/cgi/doi/10.1126/sciadv.1501678>

1176 47. Vreeker A, Boks MPM, Abramovic L, Verkooijen S, Van Bergen AH, Hillegers
1177 MHJ, et al. High educational performance is a distinctive feature of bipolar
1178 disorder: A study on cognition in bipolar disorder, schizophrenia patients,

- relatives and controls. *Psychol Med* [Internet]. 2016 Mar 1 [cited 2020 Nov 16];46(4):807–18. Available from: <https://pubmed.ncbi.nlm.nih.gov/26621616/>
48. MacCabe JH, Lambe MP, Cnattingius S, Sham PC, David AS, Reichenberg A, et al. Excellent school performance at age 16 and risk of adult bipolar disorder: National cohort study. *Br J Psychiatry* [Internet]. 2010 Feb [cited 2020 Nov 16];196(2):109–15. Available from: <https://pubmed.ncbi.nlm.nih.gov/20118454/>
49. Mullins N, Forstner AJ, O’Connell KS, Coombes B, Coleman JRI, Qiao Z, et al. Genome-wide association study of over 40,000 bipolar disorder cases provides novel biological insights. *medRxiv* [Internet]. 2020 Jan 1;2020.09.17.20187054. Available from: <http://medrxiv.org/content/early/2020/09/18/2020.09.17.20187054.abstract>
50. Robinson MR, Wray NR, Visscher PM. Explaining additional genetic variation in complex traits. *Trends Genet* [Internet]. 2014 [cited 2020 May 16];30(4):124. Available from: <https://www.ncbi.nlm.nih.gov/pmc/articles/PMC4639398/>
51. Montlahuc C, Curis E, Jonas SF, Bellivier F, Chevret S. Age-at-onset subsets of bipolar I disorders: A critical insight into admixture analyses. *Int J Methods Psychiatr Res* [Internet]. 2016 Oct 21 [cited 2017 Jul 27]; Available from: <http://www.ncbi.nlm.nih.gov/pubmed/27766706>
52. Cooper JE. Psychiatric diagnosis in New York and London; a comparative study of mental hospital admissions [Internet]. Maudsley monographs, no. 20. 1972 [cited 2020 Jun 26]. xi, 152. Available from: <https://psycnet.apa.org/record/1973-23416-000>
53. Bellivier F, Etain B, Malafosse A, Henry C, Kahn JP, Elgrabli-Wajsbrodt O, et al. Age at onset in bipolar I affective disorder in the USA and Europe. *World J Biol Psychiatry* [Internet]. 2014 [cited 2020 Jun 27];15(5):369–76. Available from: <https://pubmed.ncbi.nlm.nih.gov/22188366/>
54. Birmaher B, Axelson D, Goldstein B, Strober M, Gill MK, Hunt J, et al. Four-year longitudinal course of children and adolescents with bipolar spectrum disorders: the Course and Outcome of Bipolar Youth (COBY) study. *Am J Psychiatry* [Internet]. 2009 Jul [cited 2018 Oct 21];166(7):795–804. Available from: <http://www.ncbi.nlm.nih.gov/pubmed/19448190>
55. Daban C, Colom F, Sanchez-Moreno J, García-Amador M, Vieta E. Clinical correlates of first-episode polarity in bipolar disorder. *Compr Psychiatry* [Internet]. 2006 Nov [cited 2020 Jul 26];47(6):433–7. Available from: <https://pubmed.ncbi.nlm.nih.gov/17067865/>
56. Etain B, Lajnef M, Bellivier F, Mathieu F, Raust A, Cochet B, et al. Clinical expression of bipolar disorder type I as a function of age and polarity at onset: Convergent findings in samples from France and the United States. *J Clin Psychiatry* [Internet]. 2012 [cited 2020 Jul 26];73(4). Available from: <https://pubmed.ncbi.nlm.nih.gov/22579163/>
57. Cremaschi L, Dell’Osso B, Vismara M, Dobrea C, Buoli M, Ketter TA, et al. Onset polarity in bipolar disorder: A strong association between first depressive episode and suicide attempts. *J Affect Disord* [Internet]. 2017 Feb 1 [cited 2020 Jul 26];209:182–7. Available from: <https://pubmed.ncbi.nlm.nih.gov/27936451/>
58. Smoller JW. The use of electronic health records for psychiatric phenotyping and genomics. *Am J Med Genet Part B Neuropsychiatr Genet*. 2018;177(7):601–12.
59. Zhang Y, Cai T, Yu S, Cho K, Hong C, Sun J, et al. High-throughput phenotyping with electronic medical record data using a common semi-supervised approach (PheCAP). *Nat Protoc* [Internet]. 2019;14(12):3426–44. Available from: <http://dx.doi.org/10.1038/s41596-019-0227-6>

- 1230 60. Sullivan PF, Agrawal A, Bulik CM, Andreassen OA, Børglum AD, Breen G, et
1231 al. Psychiatric genomics: An update and an Agenda. Am J Psychiatry.
1232 2018;175(1):15–27.
1233

Figure 1: Differences between phenotype definitions and continents across the 34 datasets used for genetic analyses

A: The various datasets used four different definitions for age at onset: diagnostic interview, impairment/help-seeking, pharmacotherapy, and mixed.

B: The untransformed age at onset differed significantly, depending on the phenotype definition used. Abbreviations: P, pharmacotherapy; I, impairment/help-seeking; M, mixed; D, diagnostic interview; *n.s.*, $P>0.05$; *** $P<0.001$.

C: Estimation of the variance in different phenotype definitions explained by genotyped single-nucleotide variants (h^2_{SNV}). For the cohort *wtccc*, we directly estimated h^2_{SNV} from genotype data in GCTA GREML; we estimated all other heritabilities from GWAS summary statistics in LDSC. The plot shows h^2_{SNV} estimates and SEs. Abbreviations: SNV, single-nucleotide variant; cont, continent; AAO, age at onset; BD-I, BD type I; PAO, polarity at onset; PAO-M, mania/hypomania before depression; PAO-D, depression before mania/hypomania; PAO-X, mixed.

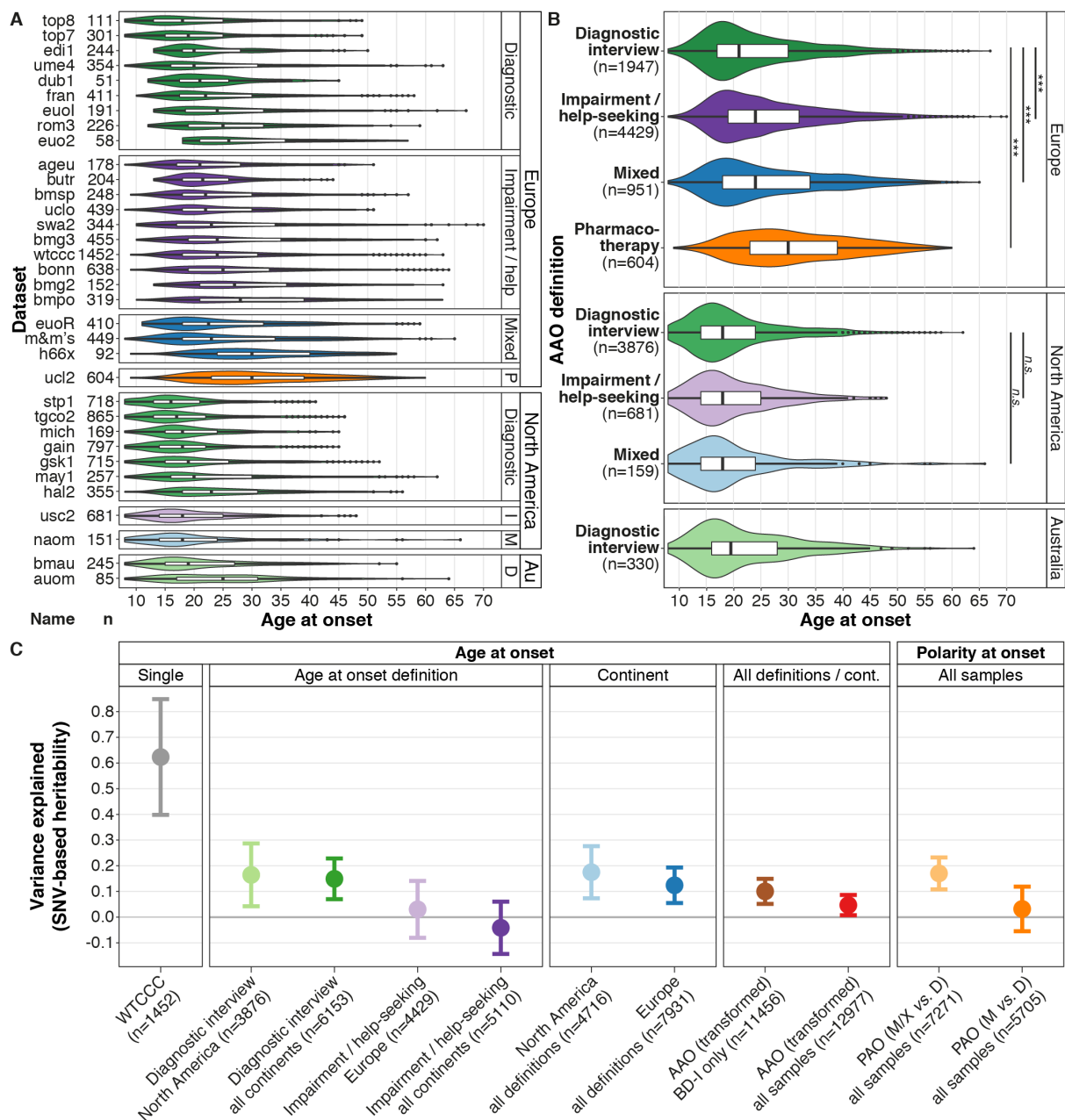


Figure 2: Results from the genome-wide association study (GWAS) and polygenic score (PGS) analyses of bipolar disorder (BD) age at onset (AAO)

A: Manhattan plot of the discovery-stage GWAS.

B: Locus-specific Manhattan plot of the top-associated variant. Mbp, mega base pairs; cM, centi Morgan.

C-D: Results from analyses of PGS. For detailed results, see Supplementary Table S8. Significance levels: n.s., $P > 0.05$; Nominal, $P < 0.05$; Bonferroni, below the Bonferroni-corrected significance threshold corrected for 96 tests ($P < 5.2 \times 10^{-4}$).

Abbreviations: ADHD, attention deficit/hyperactivity disorder; ASD, autism spectrum disorder; MD, major depression; SZ, schizophrenia; EA, educational attainment.

C: For interpretability, the plot shows the untransformed AAO. Significance levels are based on the analyses of the AAO after rank-based inverse normal transformation (which was performed because the distribution of AAO was highly skewed and differed greatly across the study cohorts).

D: Associations of the top vs bottom AAO quartiles with the top vs bottom PGS quartiles. A higher odds ratio (OR) indicates an association with higher AAO.

