

Figure S1. Seven-days cumulative incidence of SARS-CoV-2 newly diagnosed patients in Spain, and in shadowed areas, the study period for the selected individuals (December 27, 2020 – March 10, 2021) and the reference period 87 days before(October 1 to December 13, 2020).

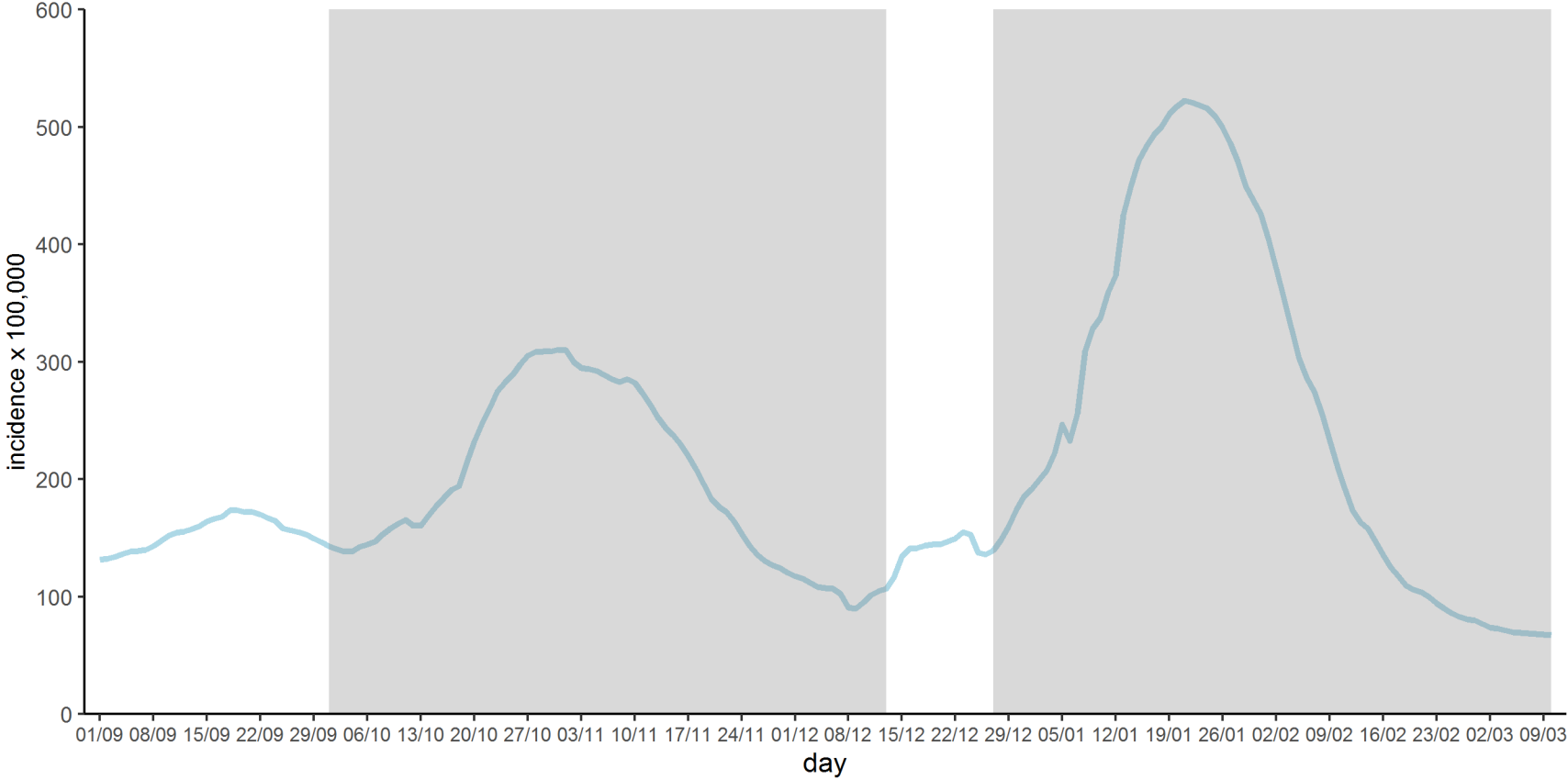


Figure S2. Vaccination uptake in residents in long-term care facilities included in the study (N=299,209), starting on 27 December, 2021.

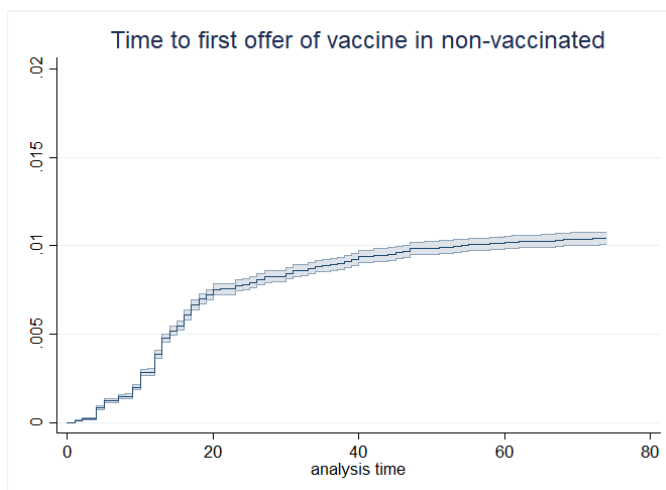
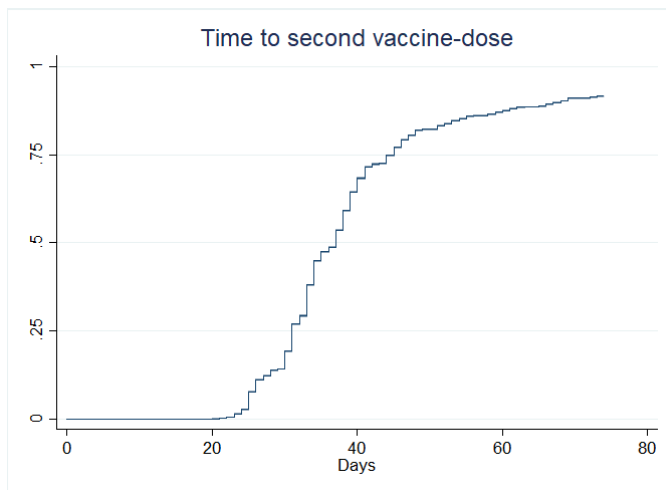
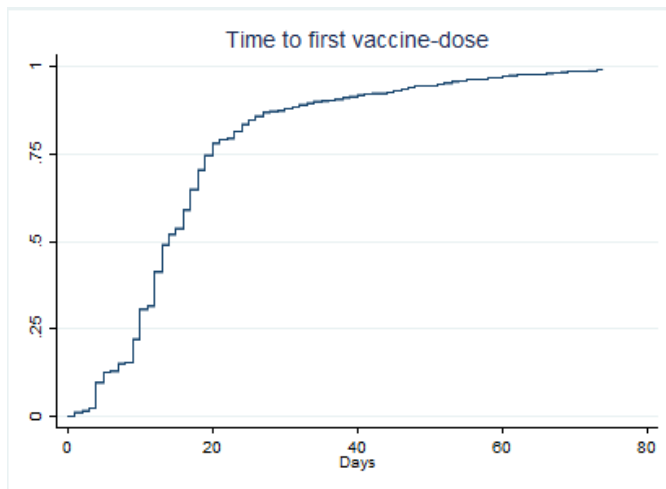


Figure S3. Unadjusted Kaplan-Meier estimates of the cumulative risk of a positive SARS-CoV-2 diagnosis in vaccinated individuals vs. non-vaccinated individuals from the reference period (left) and in non-vaccinated patients after being offered vaccination (indirectly protected) vs. non-vaccinated individuals from the reference period (right).

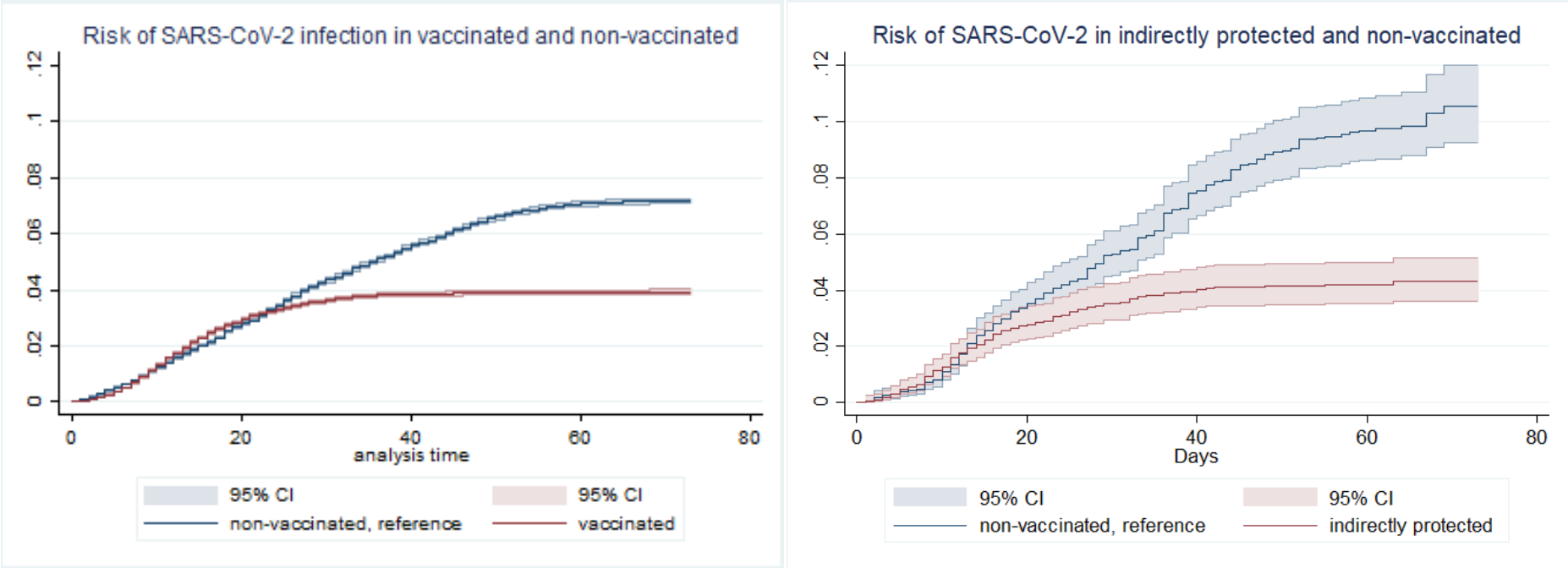


Table S1. Person-days of follow-up and number of events in the different groups and study periods.

		Person-days		Events	
		No Vac*	Vac*	No Vac*	Vac*
EFFECTS IN THE VACCINATED	Full period	16,142,536	16,277,284	19,656	11,304
	Days 0-14	4,076,665	4,076,391	6,202	5,455
	Days 15-21	1,963,952	1,969,388	2,794	3,038
	Days 22-28	1,910,859	1,908,664	1,308	3,311
	Days 29-73	8,325,808	8,188,093	1,000	7,852
INDIRECT EFFECTS	Full period	161,388	164,520	276	126
	Days 0-14	42,854	42,820	74	63
	Days 15-21	20,450	20,552	38	24
	Days 22-28	19,746	19,966	38	17
	Days 29-73	78,338	81,182	126	22

*Vac: For the Effects in the Vaccinated it corresponds to vaccinated persons; for the Indirect effect it corresponds to non-vaccinated persons after vaccine introduction in their long-term care facility; No Vac: corresponds to the non-vaccinated reference period (87 days before first vaccination or before offering of the vaccine).

Table S2. Estimated standardized cumulative risk (per 10,000 persons per day) and 95% confidence interval in the different groups and study periods, from adjusted hazard models.

		Vaccinated / Indirectly protected (study group)	Not vaccinated (reference)
EFFECTS IN THE VACCINATED	Full period	4.68 (4.6 to 4.77)	10.94 (10.79 to 11.09)
	Days 0-14	12.66 (12.42 to 12.89)	17.72 (17.32 to 18.09)
	Days 15-21	9.24 (9.06 to 9.42)	18.85 (18.53 to 19.15)
	Days 22-28	5.93 (5.79 to 6.08)	15.58 (15.33 to 15.82)
	Days 29-73	1.3 (1.25 to 1.35)	6.88 (6.72 to 7.05)
	INDIRECT EFFECTS	Full period	6.06 (5.02 to 7.15)
Days 0-14		14.31 (11.48 to 17.16)	17.62 (14.49 to 20.65)
Days 15-21		11.39 (9.49 to 13.5)	20.19 (17.52 to 22.9)
Days 22-28		7.96 (6.36 to 9.71)	18.02 (15.69 to 20.34)
Days 29-73		2.38 (1.49 to 3.27)	11.6 (9.19 to 13.85)

* Non-vaccinated persons after vaccine introduction in their long-term care facilit

Table S3. Crude estimations: Vaccine effectiveness (VE) and risk difference (RD) in residents of elderly long-term care facilities according to evidence of previous infection and time since first vaccinated (as a proxy of number of vaccine - doses and days since last dose).

		VACCINE EFFECTIVENES (%)			RISK DIFFERENCE (per 10,000 persons per day)		
		Overall	No previous infection	Previous infection	Overall	No previous infection	Previous infection
EFFECTS IN THE VACCINATED	Full period	50.8% (49.6% to 52%)	46,5% (45,3% to 47,7%)	34,1% (25,6% to 43,4%)	-5.33 (-5.51 to -5.14)	-5,48 (-5,68 to -5,28)	-0,59 (-0,8 to -0,39)
	Days 0-14	3.4% (0.7% to 5.9%)	-6,3% (-8,9% to -3,6%)	-6,4% (-24,8% to 12,9%)	-0.53 (-0.94 to -0.11)	1,13 (0,66 to 1,58)	0,15 (-0,28 to 0,59)
	Days 15-21	39.7% (38.2% to 41.2%)	34,8% (33,3% to 36,2%)	18,4% (7,3% to 30,2%)	-5.31 (-5.56 to -5.05)	-5,22 (-5,49 to -4,96)	-0,39 (-0,67 to -0,11)
	Days 22-28	55.3% (54.1% to 56.5%)	52,1% (50,9% to 53,3%)	31,3% (22,2% to 41%)	-6.65 (-6.85 to -6.43)	-7,03 (-7,26 to -6,8)	-0,61 (-0,85 to -0,38)
	Days ≥29	81.1% (80.3% to 81.8%)	80,1% (79,3% to 80,9%)	59,7% (51,3% to 69,1%)	-6.62 (-6.81 to -6.43)	-7,33 (-7,53 to -7,12)	-0,85 (-1,09 to -0,63)
INDIRECT EFFECTS	Full period	62.3% (53.9% to 70.4%)	57.9% (48.3% to 67.8%)	NA	-9.47 (-11.65 to -7.14)	-10.03 (-12.65 to -7.4)	NA
	Days 0-14	22.1% (2.7% to 42.2%)	7.8% (-15.2% to 31.7%)	NA	-4.14 (-8.27 to 0.06)	-1.62 (-6.52 to 3.37)	NA
	Days 15-21	48.6% (37.2% to 59.7%)	41.4% (28.5% to 54.5%)	NA	-8.44 (-11.18 to -5.56)	-8.05 (-11.19 to -4.83)	NA
	Days 22-28	60.6% (51.2% to 69.6%)	56.1% (45.7% to 66.8%)	NA	-10.01 (-12.4 to -7.49)	-10.46 (-13.23 to -7.67)	NA
	Days ≥29	82.6% (76% to 89.1%)	81.8% (74.8% to 89.5%)	NA	-11.2 (-13.71 to -8.52)	-12.89 (-15.88 to -9.91)	NA

Bias indicator analysis

To check the possible design-associated bias, we created a bias-indicator cohort with non-vaccinated time-at-risk of individuals who were later vaccinated, with follow-up starting on December 27 and ending at date of first vaccine dose or date of SARS-CoV-2 infection. We compared it to equivalent follow-up periods of the non-vaccinated cohort from 87 days before, in the same way as exposed in the main text.

Crude risk of infection resulted much higher in bias-indicator cohort (Figure S4), with an overall estimated effect of 1.71 (95%CI: 1.62 – 1.81). This bias was mitigated but not eliminated after adjusting by the same variables as in the main analysis, with an adjusted estimator of 1.36 (95%CI: 1.27 – 1.46). This shows the high incidence in LTCF during the beginning of the third wave, in a moment when many LTCF had not yet been reached by vaccination. In fact, the proportion of persons with past COVID-19 infection increased from around 13% in the reference period to around 25% on the individuals recruited after December 27, showing the high incidence in these facilities. As discussed in the main text, these results indicate the possibility of a residual bias that nevertheless would be conservative, in the sense that it would mean a higher risk in the period when individuals got vaccinated.

Figure S4. Unadjusted Kaplan-Meier estimates of the cumulative risk of a positive SARS-CoV-2 diagnosis in the bias indicator cohort (left) and adjusted estimates of cumulative risk (right)

