

1 **A Discernable Increase in the Severe Acute Respiratory Syndrome**
2 **Coronavirus 2 R.1 Lineage Carrying an E484K Spike Protein Mutation in**
3 **Japan**

4
5 **Running Title:** Increasing R.1 lineage-related COVID-19 cases

6
7 **Authors:**

8 Tsuyoshi Sekizuka, Kentaro Itokawa, Masanori Hashino, Kazuhiro Okubo, Asami Ohnishi,
9 Keiko Goto, Hiroyuki Tsukagoshi, Hayato Ehara, Ryohei Nomoto, Makoto Ohnishi, Makoto
10 Kuroda, Virus Diagnosis Group (NIID Toyama) and COVID-19 Genomic Surveillance Network
11 in Japan (COG-JP).

12
13 **Affiliations:**

14 Pathogen Genomics Center, National Institute of Infectious Diseases, Shinjyuku, Tokyo, Japan
15 (T. Sekizuka, K. Itokawa, M. Hashino, M. Ohnishi, M. Kuroda)

16 Hokkaido Institute of Public Health, Hokkaido, Japan (K. Okubo)

17 Sapporo City Institute of Public Health, Hokkaido, Japan (A. Ohnishi)

18 Ibaraki Prefectural Institute of Public Health, Ibaraki, Japan (K. Goto)

19 Gunma Prefectural Institute of Public Health and Environmental Sciences, Gunma, Japan (H.
20 Tsukagoshi)

21 Saitama Prefectural Institute of Public Health, Yoshimi, Saitama, Japan (H. Ehara)

22 Kobe Institute of Health, Kobe, Hyogo, Japan (R. Nomoto)

23

24 **Keywords:** SARS-CoV-2, COVID-19, spike protein, E484K, R.1, mutation of concern, immune
25 escape, spatiotemporal distribution

26

27 **Abstract—50 words**

28 Three COVID-19 waves in Japan have been characterized by the presence of distinct
29 PANGO lineages (B.1.1.162, B.1.1.284, and B.1.1.214). Recently, in addition to the B.1.1.7
30 lineage, which shows 25% abundance, an R.1 lineage carrying the E484K mutation in the spike
31 protein was found to show up to 40% predominance.

32

33 **Text—704**

34 As of March 31, 2021, Japan reported 475,043 cases and 9,175 deaths due to coronavirus
35 disease (COVID-19), some of which were caused by variants of concern (VOCs). We conducted
36 genome surveillance for severe acute respiratory syndrome coronavirus 2 (SARS-CoV-2) with
37 support from local public health centers or laboratory institutes (1,2) and five airport quarantine
38 stations (Narita, Haneda, Nagoya, Kansai, and Fukuoka airports) (3). During the surveillance, we

39 monitored several VOCs of the PANGO lineage, namely B.1.1.7 (501Y.V1), B.1.351 (501Y.V2),
40 and P.1 (501Y.V3) (4), which have emerged in the past months in all countries. As of March 31,
41 2021, a notable increase in imported VOC cases has been identified at the airport (123 cases) and
42 domestic (678 cases) quarantines. COG-JP has been monitoring the prevalence of PANGO
43 lineages consistently, from the first COVID-19 case (January 15, 2021) up to recent cases
44 (March 6, 2021) [≥ 29 kb genome in size; in total, 28,350 isolates have been deposited in the
45 Global Initiative on Sharing All Influenza Data (GISAID) EpiCoV database (Appendix Table
46 1)]. The study protocol was approved by the National Institute of Infectious Diseases, Japan
47 (approval no. 1091). The ethics committee waived the written consent requirement for research
48 on the viral genome sequence.

49 We have found notable distribution of the PANGO lineage during each COVID-19 wave.
50 Specifically, B.1.1.162, B.1.1.284, and B.1.1.214 were predominant during the first, second, and
51 third waves, respectively (Figure 1). After the first wave (March to April 2020), an effort to
52 monitor airport quarantine was initiated; this measure was successful in reducing the numbers of
53 imported cases (3). Domestic lineages (B.1.1.284 and B.1.1.214), which may have been derived
54 phylogenetically from B.1.1.162 during the first wave, were predominant during the second
55 wave (July to September 2020). However, this was not the case for the other imported lineages.
56 Moreover, B.1.1.214 was the predominant lineage during the peak of the third wave (October
57 2020 to January 2021) (Figure 1).

58 Recently, a new R.1 lineage carrying the spike protein mutation E484K has been detected in
59 $< 5\%$ to $> 37.6\%$ of all COVID-19-positive cases; within a span of six weeks (mid-January to
60 early March 2021), there has been a sharp increase in the cases (Figure 1). The spatiotemporal
61 distribution of the PANGO lineage showed that the R.1 cases appear to be predominant in the

62 Kanto and the northern Tohoku area. Our study, therefore, highlights the region-specific
63 transmission of COVID-19. Indeed, B.1.1.7 cases have been especially predominant in the
64 Kansai area; however, data from the ongoing surveillance of other VOCs will be required to
65 confirm the extensive transmission of B.1.1.7 across Japan.

66 As a notable feature of VOCs, the B.1.1.7 variant is susceptible to neutralizing antibodies
67 elicited by vaccines using the ancestral spike protein (5). However, there is a greater concern
68 about the other immune evasion mutations, such as the E484K (Glu484→Lys) mutation in the
69 spike (S) protein that is found in the B.1.351 (501Y.V2) variant that emerged in South Africa and
70 the P.1 (501Y.V3) variant in Brazil (6). Indeed, E484K could be a pivotal amino acid substitution
71 with potential for mediating immune escape. Thus far, B.1.1.318, B.1.525, R.1, R.2, and P.2 have
72 been reported as variants carrying the E484K single mutation on the receptor-binding domain.
73 R.1 has been mostly identified in USA (first found on October 24, 2020) and Japan (first found
74 on November 30, 2020). In fact, phylogenetic analysis indicated that both R.1 isolates were
75 highly similar. Thus, the Japanese R.1 isolate might have originated from the R.1 isolate from
76 USA. Conversely, it is possible that the isolates in both countries have been imported from an
77 uncharacterized source in another country, where a potential common ancestor (B.1.1.316) was
78 circulating (Appendix Figure 1).

79 In conclusion, although VOCs have a marked impact on the number of cases and the
80 severity of COVID-19 across many countries, mutants of concern carrying pivotal mutations
81 should not be disregarded if the latent distribution has been found across the community. We
82 should pay more attention to such potential VOCs to avoid the emergence of mutants of concern.
83 Based on the current epidemiological situation in Japan, with an increase in the circulation of
84 more transmissible lineages, immediate, strong, and decisive public health interventions such as

85 contact-tracing, strict quarantine monitoring, and comprehensive real-time genome surveillance
86 have become essential for containment of COVID-19 clusters.

87

88 **Acknowledgments**

89 This work was supported by a Grant-in-Aid from the Japan Agency for Medical Research, and
90 the Development Research Program on Emerging and Re-emerging Infectious Diseases
91 [JP20fk0108103 and JP19fk0108104, respectively]. We would like to thank all researchers who
92 deposited and shared genomic data on GISAID (Column H-J in Appendix Table 1). The
93 collaborators are listed in Appendix Table 2.

94

95 **Author Bio**

96 Dr. Sekizuka is the chief of the Pathogen Genomics Center, National Institute of Infectious
97 Diseases, Japan. He developed bioinformatics tools to elucidate the transmission dynamics,
98 surveillance, and control of infectious diseases based on pathogen genomics.

99

100 **References**

- 101 1. Itokawa K, Sekizuka T, Hashino M, Tanaka R, Kuroda M. Disentangling primer
102 interactions improves SARS-CoV-2 genome sequencing by multiplex tiling PCR. *PLoS*
103 *One*. 2020;15:e0239403.
- 104 2. Sekizuka T, Itokawa K, Hashino M, Kawano-Sugaya T, Tanaka R, Yatsu K, et al. A
105 genome epidemiological study of SARS-CoV-2 introduction into Japan. *mSphere*. 2020;5.
- 106 3. Sekizuka T, Itokawa K, Yatsu K, Tanaka R, Hashino M, Kawano-Sugaya T, et al.
107 COVID-19 genome surveillance at international airport quarantine stations in Japan. *J Travel*
108 *Med*. 2021;28.
- 109 4. Fujino T, Nomoto H, Kutsuna S, Ujiie M, Suzuki T, Sato R, et al. Novel SARS-CoV-2
110 variant in travelers from Brazil to Japan. *Emerg Infect Dis*. 2021;27.

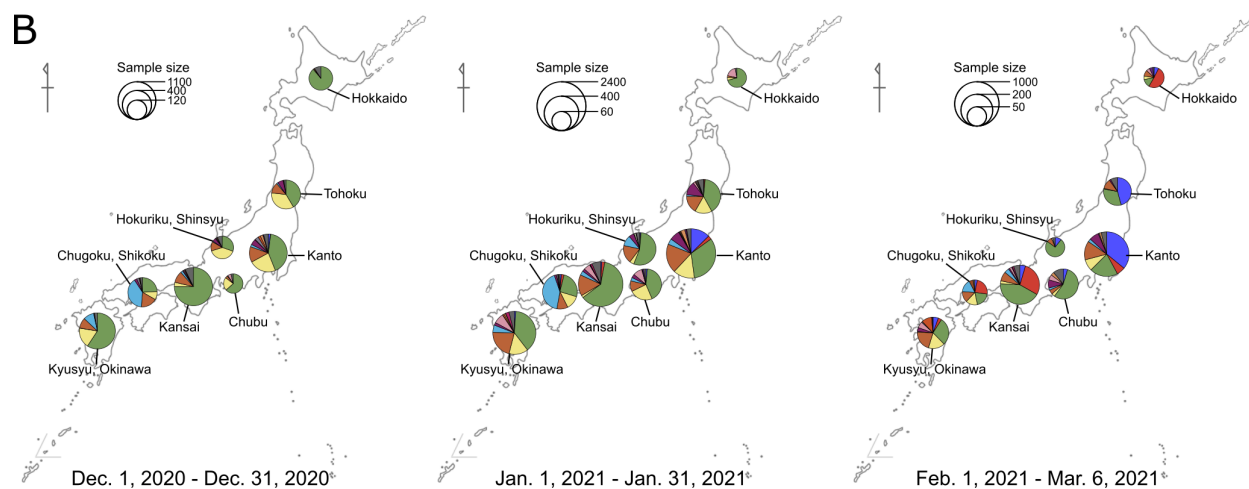
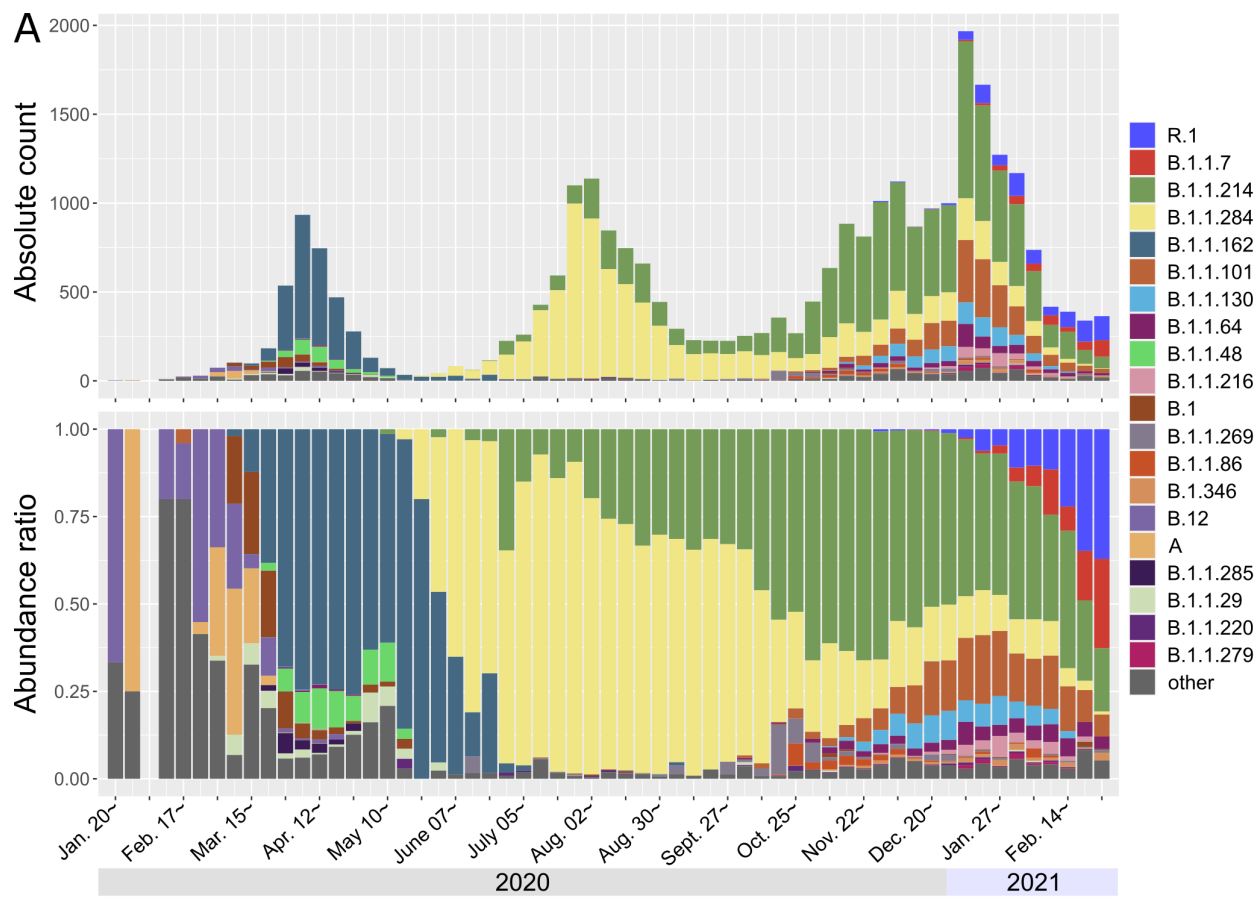
- 111 5. Shen X, Tang H, McDanal C, Wagh K, Fischer W, Theiler J, et al. SARS-CoV-2 variant
112 B.1.1.7 is susceptible to neutralizing antibodies elicited by ancestral spike vaccines. *Cell*
113 *Host Microbe*. 2021.
- 114 6. Altmann DM, Boyton RJ, Beale R. Immunity to SARS-CoV-2 variants of concern.
115 *Science*. 2021;371:1103-4.
- 116 7. Julia L. Mullen GT, Alaa Abdel Latif, Manar Alkuzweny, Marco Cano, Emily Haag,
117 Jerry Zhou, Mark Zeller, Nate Matteson, Kristian G. Andersen, Chunlei Wu, Andrew I. Su,
118 Karthik Gangavarapu, Laura D. Hughes, and the Center for Viral Systems Biology
119 *outbreak.info*. 2020. <https://outbreak.info/>
- 120 8. Hadfield J, Megill C, Bell SM, Huddleston J, Potter B, Callender C, et al. Nextstrain: real-
121 time tracking of pathogen evolution. *Bioinformatics*. 2018;34:4121–3.

122

123 Address for correspondence: Makoto Kuroda, Pathogen Genomics Center, National Institute
124 of Infectious Diseases, 1-23-1 Toyama, Shinjuku-ku, Tokyo 162-8640, Japan; email:
125 makokuro@niid.go.jp

126

127



128

129 **Figure 1. A spatiotemporal analysis of the SARS-CoV-2 PANGO lineage in Japan.**

130 A) Numbers and B) abundance ratios of whole-genome sequences of SARS-CoV-2 isolates from
 131 domestic COVID-19-positive patients in Japan (n = 28,965) were assigned as per the PANGO
 132 lineage definition (2021/02/21 version). Top 20 PANGO lineages have been highlighted as per
 133 the colors on the right. C) Area-specific lineage percentage is displayed using colored pie charts
 134 (shown in panel A and B) from December 2020 to February 2021.

135 **Appendix Table 1.**

136 Collaboration with local public health institutes and airport quarantines under the COG-JP have
137 been indicated. All SARS-CoV-2 complete genome sequences that we determined and other
138 deposited sequences identified in Japan were retrieved from the GISAID (n = 28,965). COG-JP,
139 COVID-19 genomic surveillance network in Japan; GISAID, Global Initiative on Sharing All
140 Influenza Data; SARS-CoV-2, severe acute respiratory syndrome coronavirus 2

141

142 **Appendix Table 2.**

143 Collaboration between local public health institutes and the COVID-19 genomic surveillance
144 network in Japan (COG-JP) has been shown.

145

