

# 1 **Development of Childhood Asthma Prediction Models using**

## 2 **Machine Learning Approaches**

3 Authors

4 Dilini M. Kothalawala<sup>a,b</sup>, Clare S. Murray<sup>c</sup>, Angela Simpson<sup>c</sup>, Adnan Custovic<sup>d</sup>, William J. Tapper<sup>a</sup>,  
5 S. Hasan Arshad<sup>b,e,f</sup>, John W. Holloway, PhD<sup>\*a,b</sup>, Faisal I. Rezwan, PhD<sup>\*a,g</sup>  
6 on behalf of STELAR/UNICORN investigators

7 *Institutional affiliations*

8 <sup>a</sup>Human Development and Health, Faculty of Medicine, University of Southampton,  
9 Southampton, UK

10 <sup>b</sup>NIHR Southampton Biomedical Research Centre, University Hospital Southampton

11 <sup>c</sup>Division of Infection, Immunity, and Respiratory Medicine, School of Biological Sciences,  
12 University of Manchester, Manchester University Hospital NHS Foundation Trust, Manchester  
13 Academic Health Science Centre, Manchester, UK

14 <sup>d</sup>National Heart and Lung Institute, Imperial College of Science, Technology, and Medicine,  
15 London, UK

16 <sup>e</sup>The David Hide Asthma and Allergy Research Centre, St. Mary's Hospital, Isle of Wight, UK

17 <sup>f</sup>Clinical and Experimental Sciences, Faculty of Medicine, University of Southampton,  
18 Southampton, UK

19 <sup>g</sup>School of Water, Energy and Environment, Cranfield University, Cranfield, Bedfordshire, MK43  
20 OAL, UK.

21 \*Co-authors contributed equally

22 **Correspondence to:**

23 Name: Professor John W Holloway

24 Address: Duthie Building, MP808, Southampton General Hospital, SO16 6YD, United Kingdom

25 Tel: +44 23 8120 8758

26 Email: [j.w.holloway@soton.ac.uk](mailto:j.w.holloway@soton.ac.uk)

27 **Funding:** This work was supported by the National Institute for Health Research through the NIHR  
28 Southampton Biomedical Research Centre and a University of Southampton Presidential  
29 Research Studentship. Replication analysis in MAAS was supported by the Medical Research  
30 Council as part of UNICORN (Unified Cohorts Research Network): Disaggregating asthma  
31 MR/S025340/1. Angela Simpson and Clare Murray are supported by the NIHR Manchester  
32 Biomedical Research Centre.

33 **Conflicts of interest:** The authors have no funding relationships or conflicts of interest related to  
34 this article to disclose.

35 **Data availability:** Access to data from the Isle of Wight Birth Cohort can be made available upon  
36 request. Further information can be found at [www.allergyresearch.org.uk/](http://www.allergyresearch.org.uk/) or from: Cohort  
37 Profile: The Isle Of Wight Whole Population Birth Cohort (IOWBC). *Int J Epidemiol.* 2018 Aug  
38 1;47(4):1043-1044i. doi: 10.1093/ije/dyy023. Source code for the development and use of the  
39 prediction models can also be made available upon request.

40 **ABSTRACT**

41 Background: Wheeze is common in early life and often transient. It is difficult to identify which  
42 children will experience persistent symptoms and subsequently develop asthma. Machine  
43 learning approaches have the potential for better predictive performance and generalisability  
44 over existing childhood asthma prediction models.

45 Objective: To apply machine learning approaches for predicting school-age asthma (age 10) in  
46 early life (Childhood Asthma Prediction in Early life, CAPE model) and at preschool age (Childhood  
47 Asthma Prediction at Preschool age, CAPP model).

48 Methods: Data on clinical symptoms and environmental exposures were collected from children  
49 enrolled in the Isle of Wight Birth Cohort (N=1368, ~15% asthma prevalence). Recursive Feature  
50 Elimination (RFE) identified the optimal subset of features predictive of school-age asthma for  
51 each model. Seven state-of-the-art machine learning classification algorithms were used to  
52 develop the models and the results were compared. To optimize the models, training was  
53 performed by applying 5-fold cross-validation, imputation and resampling. Predictive  
54 performances were evaluated on the test set and externally validated in the Manchester Asthma  
55 and Allergy Study (MAAS) cohort.

56 Results: RFE identified eight and 12 predictors for the CAPE and CAPP models, respectively. The  
57 best predictive performance was demonstrated by a Support Vector Machine (SVM) algorithm  
58 for both the CAPE model (area under the receiver operating curve, AUC=0.71) and CAPP model

59 (AUC=0.82). Both models demonstrated good generalisability in MAAS (CAPE 8YR=0.71,  
60 11YR=0.71, CAPP 8YR=0.83, 11YR=0.79).

61 Conclusion: Using machine learning approaches improved upon the predictive performance of  
62 existing regression-based models, with good generalisability and ability to rule in asthma.

63 **Key Words:**

64 Childhood, Asthma, Prediction, Machine Learning

65 **Abbreviations:**

66 AUC: Area under the receiver operating curve

67 BHR: Bronchial hyper-responsiveness

68 RFE: Recursive feature elimination

69 LR-: Negative likelihood ratio

70 LR+: Positive likelihood ratio

71 NPV: Negative predictive value

72 PPV: Positive predictive value

73 SPT: Skin prick test

74 **INTRODUCTION**

75 Childhood asthma is highly heterogeneous, with numerous factors contributing towards its  
76 development, persistence and severity<sup>1-3</sup>. Despite approximately 80% of asthmatic children  
77 developing symptoms (such as wheeze) before the age of six, these clinical symptoms are neither  
78 universally present in early life among all future asthmatics nor specific to asthma<sup>4</sup>. With the  
79 added difficulty of making an objective asthma diagnosis before the age of five, both under-  
80 treatment and over-treatment of wheezing disorders are common in early life<sup>5,6</sup>.

81 The ability to predict the development of school-age asthma can help to identify high-risk pre-  
82 school children and distinguish them from children whose symptoms are likely to be transient.  
83 Furthermore, early prediction of asthma susceptibility will be critical for the successful  
84 implementation of potential primary prevention strategies to reduce the risk of developing  
85 asthma.

86 A recent systematic review identified twenty-one regression-based models for predicting  
87 childhood asthma<sup>7</sup>. However, none of these models have been implemented into standard  
88 clinical practice; this is possibly due to their relatively poor predictive power, poor generalisability  
89 upon independent validation and need for specialised clinical testing. The review further  
90 proposed that regression-based methods for predicting childhood asthma may have been  
91 exhausted, with the identified models offering similar predictive power to each other and being  
92 unable to be significantly improved upon<sup>7</sup>.

93 Machine learning approaches have increasingly been applied to address a wide range of  
94 healthcare problems due to their ability to integrate large quantities of heterogeneous data,  
95 handle complex interactions between variables and identify patterns within data compared to  
96 traditional statistical methods<sup>8</sup>. Particularly for disease prediction, where interactions between  
97 biological variables are complex, machine learning approaches have the potential to identify  
98 novel predictors which were previously overlooked by regression-based approaches<sup>8-10</sup>.  
99 Furthermore, the lack of application of methods to reduce model overfitting may address the  
100 poor generalisability of existing prediction models in independent populations. Machine learning  
101 approaches have shown promise in predicting a variety of clinical asthma outcomes, phenotypes  
102 and decisions<sup>11-15</sup>. However, there have been few reports of machine learning methods being  
103 applied for either the diagnostic or prognostic prediction of childhood asthma development<sup>16-20</sup>.  
104 This study aimed to explore whether machine learning approaches can offer an improvement  
105 over traditional regression-based methods for predicting school-age asthma. To predict school-  
106 age asthma at 10 years, two models, the Childhood Asthma Prediction in Early-life (CAPE) and  
107 Childhood Asthma Prediction at Preschool-age (CAPP) models were developed within a general  
108 population based cohort using information available from the first two years and first four years  
109 of life, respectively.

## 110 **METHODS**

### 111 **Developmental Study Population**

112 Data was obtained from 1456 individuals enrolled in the Isle of Wight Birth Cohort (IOWBC). Study  
113 recruitment and participant details have been previously described<sup>21</sup> (see Supplementary  
114 Methods).

#### 115 *Prediction outcome*

116 School-age asthma, evaluated at age 10, was defined as “a doctor diagnosis of asthma ever and  
117 at least one episode of wheezing or use of asthma medication in the last 12 months”. Only  
118 individuals with a reported asthma status at the 10-year follow-up were included in the analyses.

#### 119 *Candidate predictors*

120 Reported risk factors associated with childhood asthma in the literature were used to identify 54  
121 candidate predictors for which data was available in the IOWBC (Table E1) and underwent pre-  
122 processing (see Supplementary Methods). Candidate predictors included data on subject  
123 demographics, lifestyle, clinical symptoms of allergy and asthma and environmental exposures  
124 collected across three time points: at birth (prenatal and perinatal data), early life (combined  
125 exposure at either the 1-year or the 2-year follow-ups) and at preschool age (4-year follow-up).



126 **Model development**

127 All stages of model development were performed independently for the CAPE and CAPP models.

128 *Feature selection*

129 For each model, feature selection was performed on the complete dataset for all available  
130 candidate predictors (without any missing values) using Recursive Feature Elimination (RFE) with  
131 a random forest algorithm, using 5-fold cross-validation (see Supplementary Methods). As the  
132 random forest algorithm does not indicate the direction of risk associated with each predictor,  
133 this was estimated using univariate logistic regression analyses for each predictor.

134 *Model construction and optimisation*

135 To identify the best classification algorithm, seven state-of-the-art machine learning classifiers  
136 were implemented: two support vector machines (SVM) (linear and radial bias kernel functions),  
137 decision tree, random forest, naive Bayes, multilayer perceptron (MLP), and K-Nearest  
138 Neighbours (KNN) (see Supplementary Methods).

139 Each of the seven machine learning algorithms were initially trained and evaluated on the subset  
140 of individuals who had complete data for the predictors selected through RFE. The dataset was  
141 split (ratio of 2:1, preserving class proportions) into a training and holdout test set for model  
142 development and validation, respectively. Grid search was used to tune the hyperparameters  
143 for each model within a five-fold cross-validation, optimizing for its balanced accuracy (see  
144 Supplementary Methods, Table E2).

145 The training dataset was then optimised in an attempt to further improve the performance of  
146 the classification algorithms. Multiple imputation using multivariate imputation by chain  
147 equations (MICE)<sup>22</sup>, oversampling using an adaptive synthetic sampling approach (ADASYN)<sup>23</sup>,  
148 and random under-sampling were implemented in a stepwise approach to address the degree of  
149 missing data and class imbalance in the training set (see Supplementary Methods). The seven  
150 algorithms were redeveloped, and the hyperparameters were tuned, on each optimised training  
151 set in order to identify the best asthma prediction models. As the test dataset was not modified,  
152 it acted as a single, unseen complete dataset to evaluate the predictive performance of each  
153 developed model.

#### 154 *Model evaluation*

155 The predictive performance of each model was evaluated on the test set using measures of  
156 discrimination (area under the receiver operating curve (AUC)), sensitivity, specificity, positive  
157 and negative predictive values (PPV and NPV), positive and negative likelihood ratios (LR+ and  
158 LR-) and F<sub>1</sub>-score. The balanced accuracy of each model (which accounts for the prevalence of  
159 each class) was also reported. Performance measures were evaluated at the optimal threshold  
160 that maximized the Youden's Index. The Brier score, which measures the mean squared  
161 difference between the predicted probability of the outcome and the observed outcome, was  
162 also calculated.

163 The best CAPE and CAPP models were selected based on their discriminative performance in the  
164 test set. To calculate 95% confidence intervals for the performance measures in the test and  
165 independent validation datasets, 2000 bootstrap samples were used.

166 **External Validation**

167 The best CAPE and CAPP models were validated in the Manchester Asthma and Allergy Study  
168 (MAAS) cohort<sup>24</sup> (see Supplementary Methods). Data extracted from MAAS was closely matched  
169 to maximise the similarity of predictor and outcome definitions used in the development cohort  
170 (Table E3). The prediction outcome of school-age asthma was evaluated at both eight and eleven  
171 years.

172 Model generalisability was assessed in MAAS among three risk groups: i) all individuals  
173 (unselected population); ii) individuals with at least one parent with allergic disease (asthma,  
174 eczema or allergic rhinitis); and iii) individuals with two parents with allergic disease.

175 **Sensitivity Analyses**

176 The robustness of the CAPE and CAPP models was evaluated using an alternative definition of  
177 school-age asthma that incorporated an objective outcome measure. Using this alternative  
178 asthma definition, a child was considered asthmatic if they presented with wheeze in the last 12  
179 months and had bronchial hyper-responsiveness (BHR), defined as a 20% reduction in forced  
180 expiratory volume in one second (FEV<sub>1</sub>) following a methacholine challenge test<sup>25</sup>.

181 Additionally, the resolution of the asthma predictions to distinguish between individuals  
182 presenting with distinct wheeze phenotypes throughout childhood and adolescence was  
183 assessed. The identification and assignment of individuals in the IOWBC and MAAS into one of  
184 five distinct wheeze phenotypes through a latent class analysis has been previously described<sup>26</sup>  
185 (see Supplementary Methods).

186 **Comparison with regression-based methods**

187 To evaluate the hypothesis that machine learning methods may offer greater predictions of  
188 childhood asthma than regression-based methods, the CAPE and CAPP machine learning models  
189 were directly compared with equivalent logistic regression models developed using the same  
190 predictors.

191 Where data was available in the IOWBC, the performance of the machine learning models were  
192 also compared against their existing regression-based benchmark models, and differences in  
193 predictions were evaluated using reclassification tables and net reclassification indices (NRI) (see  
194 Supplementary Methods).

195 **Software**

196 Data cleaning, pre-processing and imputation were performed using R statistical programming  
197 language (version 3.5.1)<sup>27</sup>. All other data manipulation and modelling was performed using  
198 Python scripting language (version 3.6.8) and the machine learning libraries Scikit-learn<sup>28</sup> and  
199 imbalanced-learn<sup>29</sup>.

## 200 **RESULTS**

201 In the IOWBC, 1368 enrolled participants had a defined asthma outcome at age 10, of whom 201  
202 (14.69%) were classified as asthmatic. Asthmatic children at age 10 were significantly more likely  
203 to be male, have a lower birthweight, be atopic and experience a range of asthma-like symptoms,  
204 both in early life and at preschool age (Table E4). Baseline characteristics between subjects with  
205 complete data used for feature selection were largely comparable with the full IOWBC dataset  
206 (Table E4).

### 207 **Childhood Asthma Prediction in Early-life (CAPE) Model**

208 Data on 39 of the 54 candidate predictors were collected by age two. Complete data on all 39  
209 predictors was available for 490 individuals. RFE identified a subset of eight predictors for  
210 inclusion in the CAPE model, with an average balanced accuracy of 64.49% (Table 1). Table E5  
211 details the direction of asthma risk for each selected predictor. Complete data for these eight  
212 predictors was available for 765 individuals; 510 (68 asthmatics) and 255 (34 asthmatics) subjects  
213 were allocated to the initial training and test sets, respectively. A SVM with a RBF kernel was the  
214 best performing classification algorithm for the CAPE model (Table 2A), with moderate predictive  
215 performance (AUC=0.71 and Brier score=0.21).

### 216 *External Validation of the CAPE Model*

217 To predict the development of asthma at the 8-year and 11-year time-points in MAAS, complete  
218 data on the eight CAPE predictors was available for 322 and 299 individuals, respectively. Table  
219 E6 compares the distribution of predictors in the IOWBC and MAAS. The CAPE model  
220 demonstrated moderate generalisability, with a reduction in PPV despite maintaining an

221 AUC=0.71 in the validation study at both 8 and 11 years (Table 2A, Figure 2). In the high-risk  
222 subgroups, despite a slight increase in PPV, overall predictive performance decreased (Table 2A).

### 223 **Childhood Asthma Prediction at Preschool-age (CAPP) Model**

224 For the CAPP model, 373 individuals had complete data for all 54 candidate predictors available  
225 by age four. RFE identified an optimal subset of 12 predictors for inclusion in the model, with an  
226 average balanced accuracy of 74.93% (Table 1) and direction of asthma risk for each predictor  
227 detailed in Table E5. Complete data for these 12 predictors was available for 548 individuals, of  
228 whom 365 (51 asthmatics) and 183 (25 asthmatics) individuals were assigned to the initial  
229 training and test sets, respectively. The best performing classification algorithm for the CAPP  
230 model was a SVM with a linear kernel (Table 2B). The model demonstrated good predictive  
231 performance, with AUC=0.82 and Brier score=0.18.

### 232 *External Validation of the CAPP Model*

233 For validation of the CAPP model in MAAS at the 8-year and 11-year time-points, complete data  
234 for the 12 CAPP predictors was available for 282 and 267 individuals, respectively. The model  
235 demonstrated good generalisability in predicting asthma at both 8 and 11 years (AUC=0.83 and  
236 0.79, respectively) in the unselected MAAS subgroup (Table 2B). PPV remained comparable upon  
237 validation (PPV=0.45 and 0.41, respectively), with further improvements reported in both high-  
238 risk subgroup validations at both time-points (Table 2B).

### 239 ***Sensitivity analysis***

240 Asthma status, based on the alternative asthma definition, was available for 1312 of the 1368  
241 individuals analysed in the IOWBC (prevalence 8.61%). Despite an overall 92.3% agreement,

242 there was a statistically significant difference between the two asthma definitions ( $p < 0.01$ ). This  
243 stemmed from a 97.6% agreement for labelling non-asthmatics but only a 53.8% agreement for  
244 labelling asthmatics (Figure E1).

245 A labelled asthma status using the alternative asthma definition incorporating BHR was available  
246 for 248 out of 255 individuals in the CAPE test dataset (20 asthmatic) and 179 out of 183  
247 individuals in the CAPP test dataset (18 asthmatic). The CAPE and CAPP models were less robust  
248 to predict the alternative asthma outcome (CAPE AUC=0.67 vs 0.71 and CAPP AUC=0.79 vs 0.82).  
249 Both models demonstrated an increased sensitivity to predict asthmatics, but the corresponding  
250 increase in false positive predictions resulted in PPV reducing by approximately 50% (Table E7).

251 In the CAPE and CAPP test datasets, 213 and 167 individuals had a defined wheeze phenotype,  
252 respectively. For both models, individuals predicted as non-asthmatic at age 10 largely presented  
253 with the never/infrequent or late-onset wheeze phenotypes (Figure 3). Both models showed  
254 excellent power to predict the persistent wheeze phenotype, with 100% and 90% of individuals  
255 with persistent wheeze offered a positive prediction by the CAPE and CAPP models, respectively.  
256 Upon validation, the CAPE and CAPP models were able to positively predict 91% and 57% of  
257 persistent wheezers, respectively.

### 258 ***Comparison with regression-based methods***

259 Both the CAPE and CAPP machine learning models outperformed their equivalent logistic  
260 regression models (Table 3, Figure 2). There was a substantial decline in predictive performance  
261 of the CAPE model when using a logistic regression model (AUC=0.59 vs 0.71), with predictions  
262 being no better than chance in MAAS at 8 and 11 years (AUC=0.47 and 0.49, respectively). Yet,

263 PPV remained comparable with the CAPE machine learning model (PPV=0.25 vs 0.26). Predictive  
264 power of the CAPP model also reduced when using a logistic regression model (AUC=0.76 vs  
265 0.82), with a 14% decline in PPV (PPV=0.33 vs 0.47). The CAPP equivalent logistic regression  
266 model demonstrated poor generalisability, with a further 11-13% decline in PPV in MAAS; the  
267 CAPP machine learning model demonstrated good generalisability upon validation, maintaining  
268 similar PPV to that observed in the developmental population.

269 Of the existing validated regression-based models, the PAPS (Persistent Asthma Predictive  
270 Score)<sup>30</sup> and PARS (Paediatric Asthma Risk Score)<sup>31</sup> were considered the best performing models  
271 comparable with the CAPE and CAPP models, offering predictions in early life and at preschool  
272 age, respectively. The well-known Asthma Predictive Index was not replicable due to the absence  
273 of eosinophil data in the IOWBC. Similarly, PAPS was unable to be replicated as RAST tests were  
274 not performed in the IOWBC. However, data was available to replicate the PARS model (AUC  
275 IOWBC=0.77, MAAS 8YR=0.79, MAAS 11YR=0.76). In individuals with predictions available from  
276 both the CAPP and PARS models in the IOWBC CAPP test set (n=174), 32% of asthmatic children  
277 at age 10 were correctly reclassified as asthmatic by the CAPP model whilst only 5% of non-  
278 asthmatics were incorrectly reclassified as asthmatic compared to predictions made by the PARS  
279 model (Table 4). Prediction classifications made by the CAPP model remained superior compared  
280 to PARS upon validation in MAAS (Table E8).



## 281 **DISCUSSION**

### 282 **Summary of findings**

283 Two models predicting school-age asthma at age 10 within a general population were developed  
284 using machine learning classification methods. The CAPE model uses a RBF SVM classifier and  
285 data from eight predictors to predict school-age asthma in early life. The CAPP model uses a linear  
286 SVM classifier and information on twelve predictors available by age four. Both machine learning  
287 models offered superior predictive power and generalisability upon external validation  
288 compared to equivalent models developed using logistic regression methods as well as existing  
289 regression-based models. Whilst the primary prediction outcome was school-age asthma, both  
290 models demonstrated greater sensitivity in predicting individuals likely to experience persistent  
291 wheeze throughout childhood.

### 292 **Comparisons with Existing Models**

293 To date, twenty-one regression-based prediction models have been developed for childhood  
294 asthma (reviewed in Kothalawala *et al.*<sup>7</sup>), of which only six have been externally validated. Using  
295 machine learning approaches, both the CAPE and CAPP models were able to surpass the  
296 performance of their respective benchmark models based on AUC (CAPE=0.71 vs PAPS=0.66; and  
297 CAPP=0.82 vs PARS=0.80). The CAPP model further outperformed all six validated regression-  
298 based models based on discrimination (Table E9).

299 Similar to the CAPE and CAPP models, most published asthma prediction models are very good  
300 at ruling out asthma rather than ruling in asthma, resulting partly from low power due to low  
301 asthma prevalence<sup>7</sup>. Even if existing models offer good PPV, this often degrades upon validation<sup>7</sup>.

302 Arguably, the need for exploring novel methodologies for asthma prediction is to improve the  
303 ability to rule in asthma and improve model generalisability. Indeed, despite having similar  
304 asthma prevalence to existing studies, the machine learning-based CAPP model was able to offer  
305 a 30% improvement in sensitivity compared to the loose API (sensitivity: CAPP=0.72, API=0.42)  
306 and further 10% improvement in PPV compared to its benchmark model, PARS. Importantly, the  
307 CAPP machine learning model was more generalisable and able to retain its positive predictive  
308 power upon validation compared to its equivalent logistic regression model. Furthermore, direct  
309 comparison between the classifications made by the CAPP and PARS models highlighted the  
310 improved power for the CAPP model to correctly predict future asthmatics. The moderate but  
311 limited predictive power of the CAPE model compared to the CAPP model was unsurprising given  
312 the known difficulty of predicting childhood asthma in the first few years of life<sup>32</sup>.

### 313 **Predictor selection and availability**

314 Both the CAPE and CAPP models include data collected across multiple time-points -at birth, in  
315 early life and at preschool-age (the latter for the CAPP model only) (Figure E2 and E3). Given the  
316 changeable nature of asthma development and risk throughout early childhood, the  
317 consideration of predictors across multiple time-points allowed the identification of a novel  
318 combination of predictors that together helped to improve current asthma predictions. Whilst  
319 data collected across multiple time-points may hinder the utility of the model, the required  
320 predictor data are typically reported during a child's routine health visits or tracked in child health  
321 records, such as those provided for each newborn child in the UK. Only the predictors of atopy  
322 and polysensitisation, which require a skin prick test (SPT) to be performed, may hinder the  
323 applicability of the CAPP model. However, the exclusion of these predictors resulted in an 8%

324 reduction in model sensitivity (Table E10); hence, the predictive benefit offered by the inclusion  
325 of sensitisation was deemed to outweigh the potential loss in model applicability.

326 Of the predictors selected for inclusion in the two models, some were well-established risk  
327 factors with a clear direction of asthma risk (Table E5). Others were novel predictors (maternal  
328 age at the time of the child's birth, age of solid food introduction and total breastfeeding  
329 duration) that did not indicate a clear direction of asthma risk based on univariate logistic  
330 regression analysis. The selection of these novel predictors, over other predictors that have more  
331 established biological relevance in the literature (such as parental asthma, eczema or allergic  
332 rhinitis), may be cautiously accepted by the clinical community. However, the aim of RFE is to  
333 identify the subset of features that collectively offer the best predictive accuracy rather than to  
334 devise a comprehensive list of risk factors of childhood asthma, which may be biologically sound  
335 but lacking in predictive power<sup>33</sup>. Therefore, the inclusion of these novel predictors may be  
336 indicative of the improved power for feature selection using machine learning methods to  
337 account for the relatedness between features, and uncover previously unidentified predictors,  
338 compared to traditional univariate or multivariate regression-based approaches. These  
339 predictors could also be surrogates for more biologically relevant features. It is also important to  
340 acknowledge the possibility that the selection of these novel predictors may stem from an  
341 inherent bias of the random forest algorithm to assign greater importance to features which are  
342 continuous or which have a large number of categories<sup>34</sup>. However, as the CAPE and CAPP models  
343 developed using these selected predictors demonstrated improved performance against existing  
344 prediction models, any bias stemming from the feature selection process did not appear to  
345 hinder the selection of features that were truly predictive of school-age asthma.

346 **Prediction generalisability, robustness and resolution**

347 In the unselected MAAS cohort, the CAPE and CAPP models showed moderate-good  
348 generalisability to predict asthma across school ages (age 8 and 11), despite the marginal decline  
349 in the PPV of the CAPE model. Validation in high-risk MAAS subgroups showed the PPV of both  
350 models to increase with the number of allergic parents, suggesting that confidence in ruling in  
351 asthma improves in high-risk groups; but replication in a larger study population is required.

352 In addition, the lack of a clear definition for asthma is an unavoidable limitation in  
353 epidemiological studies<sup>35</sup>. The asthma definition used in this study aimed to account for children  
354 with a clinical indication of asthma (physician diagnosed) who were actively symptomatic, but  
355 also those potentially asymptomatic at the time of assessment due to the use of symptom  
356 relieving medications. It is likely that the majority of children in the IOWBC with clinically relevant  
357 asthma were detected. Whilst the CAPE and CAPP models were robust in predicting non-  
358 asthmatics using an alternative asthma definition of wheeze and BHR, they had reduced power  
359 to predict true asthmatics (~50% decline in PPV). The latter may be explained by objective tests  
360 such as spirometry and BHR being influenced by treatment; potential asthmatics on controller  
361 medications, whom the models are trained to identify as asthmatic, may be considered as non-  
362 asthmatic with the alternative definition, resulting in greater false positive predictions.

363 Evidently, asthmatics, by either definition, identify a highly heterogeneous group; better  
364 definitions or explorations of asthma sub-phenotypes are warranted. As the aim of this study was  
365 to compare whether machine learning approaches could improve upon existing regression-based  
366 models that predict childhood asthma, the primary prediction outcome for this study was

367 restricted to school-age asthma rather than predicting asthma phenotypes. However,  
368 acknowledging the importance of exploring specific sub-phenotypes of asthma, the resolution of  
369 the machine learning models to inform on an individual's future wheeze trajectory was also  
370 explored. Notably, both the CAPE and CAPP models showed excellent sensitivity to predict  
371 individuals with a persistent wheeze phenotype; these individuals would likely benefit from early  
372 primary or secondary asthma prevention/ management.

### 373 **Strengths and limitations**

374 This study had a number of strengths. First, each model was developed to make timely  
375 predictions to identify future asthmatics within a general population, rather than among those  
376 whom physicians already consider to be at high-risk (mainly those experiencing wheeze or with  
377 a familial history of asthma/allergy). Second, by utilising machine learning methods, which have  
378 infrequently been applied for predicting childhood asthma, novel predictors of school-age  
379 asthma were identified and the developed models offered improved predictive performance  
380 over current regression-based methods, with an improvement in PPV when predicting asthma at  
381 preschool age. Third, both models were externally validated and demonstrated good  
382 generalisability to predict school-age asthma across multiple time-points, without degrading the  
383 predictive power to rule in asthma (particularly with the CAPP model). Finally, the two models  
384 displayed moderate resolution to inform on a child's wheeze trajectory, with excellent sensitivity  
385 to predict persistent wheeze.

386 However, this study was limited by both model development and validation being conducted in  
387 predominantly Caucasian populations; validation in ethnically diverse populations is warranted

388 to assess the widespread generalisability of the two models. Machine learning also requires large  
389 datasets – the introduction of more data would undoubtedly improve the performance of the  
390 machine learning models further. Finally, whilst biological data was available in the IOWBC, only  
391 clinical and environmental predictors were considered. It is possible that the consideration of  
392 such predictors might significantly improve childhood asthma predictions further; however, the  
393 aim of this study was to explore whether machine learning methods could surpass the predictive  
394 ceiling that existing logistic regression methods appeared to be limited to. Hence, to provide a  
395 fair comparison with existing regression-based models, asthma biomarkers were not  
396 incorporated into this study.

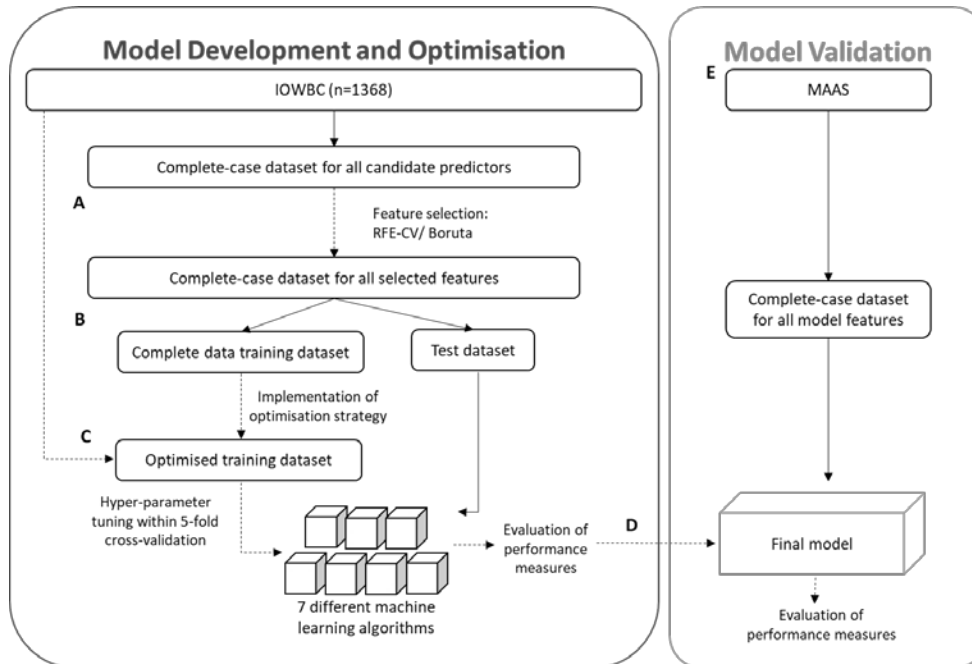
#### 397 **Conclusion and Future Work**

398 Using machine learning approaches, the CAPE and CAPP models were able to surpass the  
399 predictive performance of similar models developed using regression-based methods. Whilst  
400 both models were generalisable in an independent population, the CAPP model also  
401 demonstrated superior predictive power to rule in true asthmatics compared to its benchmark  
402 model, which was retained upon validation. Both models also demonstrated excellent sensitivity  
403 to predict a subgroup of persistent wheezers. Therefore, rather than developing an all-  
404 encompassing asthma prediction tool, further research into predicting specific ‘asthmas’ using  
405 machine learning approaches may offer greater predictive insight. Finally, continued exploration  
406 of machine learning approaches and the identification and integration of novel biomarkers is  
407 warranted to further improve the power to predict future childhood asthma.

408 **Acknowledgments:** The authors would like to acknowledge the help of all the staff at the David  
409 Hide Asthma and Allergy Research Centre in undertaking the assessments of the Isle of Wight  
410 birth cohort. The authors would also like to thank the IOWBC and MAAS study participants and  
411 their parents for their continued support and enthusiasm. Recruitment and initial assessment for  
412 the first 4 years of age for the IOWBC was supported by the Isle of Wight Health Authority. The  
413 10-year follow-up of the IOWBC was funded by the National Asthma Campaign, UK (Grant No  
414 364). MAAS was supported by the Asthma UK Grants No 301 (1995-1998), No 362 (1998-2001),  
415 No 01/012 (2001-2004), No 04/014 (2004-2007), BMA James Trust (2005) and The JP Moulton  
416 Charitable Foundation (2004-current), The North west Lung Centre Charity (1997-current) and  
417 the Medical Research Council (MRC) G0601361 (2007-2012), MR/K002449/1 (2013-2014) and  
418 MR/L012693/1 (2014-2018). UNICORN (Unified Cohorts Research Network): Disaggregating  
419 asthma MR/S025340/1.

420

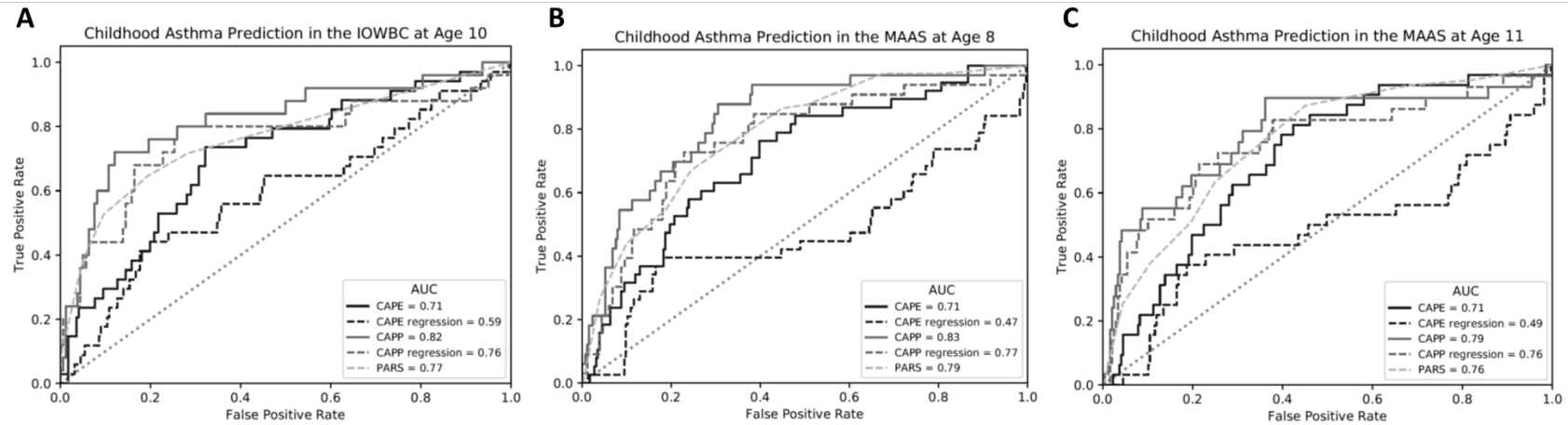
421 **FIGURES**



422 Figure 1: Workflow for the development and validation of asthma prediction models using  
423 machine learning approaches.

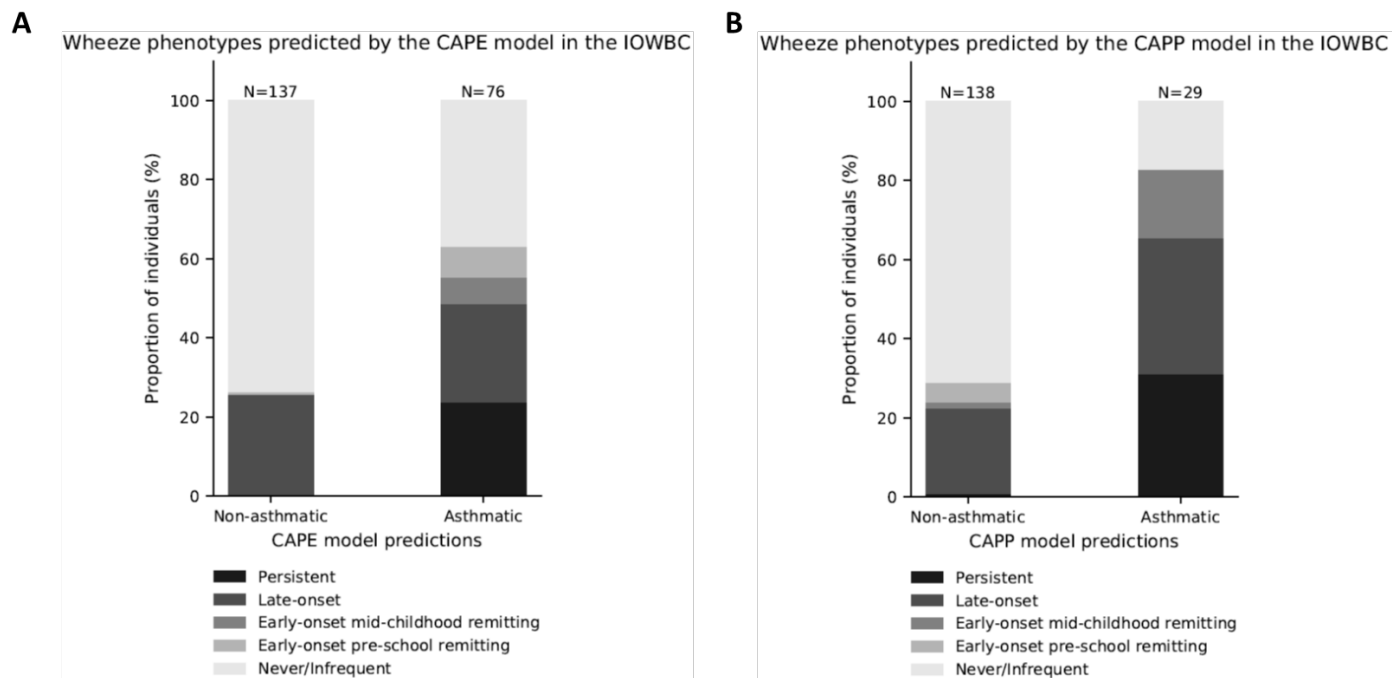
424 Model development was performed using data from the Isle of Wight Birth Cohort (IOWBC). The  
425 following process was performed independently for the construction of the CAPE and CAPP tools.  
426 (A) Feature selection was performed using only individuals with complete data for all available  
427 candidate predictors. (B-C) Seven machine learning classifiers (two support vector machines with  
428 different kernel functions (linear and radial bias function), naïve Bayes classifier, decision tree,  
429 multilayer perceptron, random forest and K-nearest neighbours) were developed. Models were  
430 first developed using only individuals with complete data for the subset of features identified  
431 from feature selection (B), and subsequently redeveloped using optimised training datasets (C).  
432 Optimisation of the training dataset consisted of the step-wise application of imputation and  
433 resampling (oversampling using ADASYN and random undersampling) to the dataset of all  
434 individuals in the IOWBC not allocated to the test dataset, including those with missing predictor  
435 data. (D) The best models for use in early life (CAPE tool) and at preschool age (CAPP tool) were  
436 selected based on their performance in the test set. (E) The selected models were externally  
437 validated in an independent population (Manchester Asthma and Allergy Study, MAAS).





438 Figure 2: Discriminative performance of the CAPE and CAPP machine learning models, compared against their equivalent regression  
 439 models and the PARS model.

440 ROC curves comparing the generalisability of the five models in the IOWBC at age 10 (A) and upon validation in MAAS at age 8 years  
 441 (B) and 11 years (C).



442 Figure 3: CAPE and CAPP model predictions and corresponding wheeze trajectories.

443 The proportion of individuals corresponding to their most probable wheeze phenotypes is  
444 presented for those offered a negative or positive prediction by either the CAPE (A) or CAPP  
445 model (B) in the IOWBC (predicted non-asthmatic or asthmatic at age 10, respectively).

446 **TABLES**

447 Table 1 Optimal subset of predictors selected by RFE for inclusion in the CAPE and CAPP models

<b>Table 1. Predictors selected for inclusion in the model (n)</b>		<b>Average balanced accuracy (%)</b>
<b>CAPE</b>	(8) - Maternal age, birthweight, total breastfeeding duration, age of solid food introduction, BMI at 1 year, wheeze in early life, cough in early life and maternal socioeconomic status	64.49
<b>CAPP</b>	(12) - Maternal age, birthweight, total breastfeeding duration, age of solid food introduction, BMI at 1 year, BMI at 4 years, wheeze, cough, nocturnal symptoms, atopy status, polysensitisation and maternal socioeconomic status	74.93

448

449 Table 2 Performance of the CAPE and CAPP models

Table 2A. Performance of the CAPE Model											
	Dataset	Sample size (no. asthmatic)	Balanced Accuracy	AUC	Sensitivity	Specificity	PPV	NPV	LR+	LR-	F1 Score
<b>Development - IOWBC: 10 years</b>	Training <sup>a</sup>	136 (68 asthmatic)	0.65	0.76	0.56	0.75	0.69	0.63	2.24	0.59	0.62
	Testing	255 (34 asthmatic)	0.71 (0.62-0.78)	0.71 (0.61-0.80)	0.74 (0.56-0.88)	0.68 (0.62-0.74)	0.26 (0.21-0.32)	0.94 (0.91-0.97)	2.29 (1.69-3.01)	0.39 (0.18-0.63)	0.38 (0.31-0.46)
<b>External Validation - MAAS: 8 years</b>	Unselected	322 (38 asthmatic)	0.67 (0.60-0.74)	0.71 (0.63-0.79)	0.84 (0.71-0.95)	0.51 (0.45-0.56)	0.19 (0.16-0.21)	0.96 (0.93-0.99)	1.71 (1.40-2.03)	0.31 (0.10-0.57)	0.30 (0.26-0.35)
	High-risk <sup>c</sup>	208 (31 asthmatic)	0.66 (0.59-0.73)	0.71 (0.61-0.80)	0.87 (0.74-0.97)	0.46 (0.39-0.53)	0.22 (0.19-0.25)	0.95 (0.91-0.99)	1.61 (1.31-1.95)	0.28 (0.06-0.59)	0.35 (0.30-0.40)
	High-risk <sup>d</sup>	81 (16 asthmatic)	0.57 (0.45-0.67)	0.64 (0.47-0.80)	0.81 (0.63-1.00)	0.32 (0.22-0.43)	0.23 (0.18-0.28)	0.88 (0.75-1.00)	1.20 (0.86-1.56)	0.58 (0.00-1.35)	0.36 (0.27-0.43)
<b>External Validation - MAAS: 11 years</b>	Unselected	299 (32 asthmatic)	0.68 (0.60-0.74)	0.71 (0.62-0.79)	0.84 (0.72-0.97)	0.51 (0.45-0.57)	0.17 (0.14-0.20)	0.96 (0.94-0.99)	1.72 (1.39-2.05)	0.31 (0.07-0.58)	0.28 (0.24-0.33)
	High-risk <sup>c</sup>	192 (25 asthmatic)	0.67 (0.59-0.74)	0.71 (0.62-0.80)	0.88 (0.76-1.00)	0.47 (0.40-0.54)	0.20 (0.17-0.23)	0.96 (0.92-1.00)	1.65 (1.34-2.03)	0.26 (0.00-0.57)	0.32 (0.27-0.37)
	High-risk <sup>d</sup>	72 (12 asthmatic)	0.58 (0.44-0.69)	0.60 (0.43-0.76)	0.83 (0.58-1.00)	0.33 (0.22-0.45)	0.20 (0.15-0.25)	0.91 (0.78-1.00)	1.25 (0.85-1.66)	0.50 (0.00-1.39)	0.32 (0.23-0.40)

Table 2B. Performance of the CAPP Model

	Population	Sample size (no. asthmatic)	Balanced Accuracy	AUC	Sensitivity	Specificity	PPV	NPV	LR+	LR-	F1 Score
<b>Development - IOWBC: 10 years</b>	Training <sup>b</sup>	408 (204 asthmatic)	0.78	0.85	0.80	0.77	0.78	0.79	3.47	0.26	0.79
	Testing	183 (25 asthmatic)	0.80 (0.70-0.89)	0.82 (0.71-0.91)	0.72 (0.52-0.88)	0.88 (0.83-0.92)	0.47 (0.38-0.62)	0.95 (0.92-0.98)	5.99 (3.79-10.11)	0.32 (0.13-0.54)	0.56 (0.45-0.70)
<b>External Validation - MAAS: 8 years</b>	Unselected	282 (33 asthmatic)	0.73 (0.64-0.81)	0.83 (0.75-0.90)	0.55 (0.36-0.70)	0.91 (0.88-0.95)	0.45 (0.33-0.59)	0.94 (0.92-0.96)	6.17 (3.64-10.69)	0.50 (0.33-0.69)	0.49 (0.36-0.62)
	High-risk <sup>c</sup>	178 (26 asthmatic)	0.70 (0.60-0.80)	0.80 (0.70-0.88)	0.50 (0.31-0.69)	0.90 (0.85-0.95)	0.46 (0.32-0.63)	0.91 (0.89-0.94)	5.07 (2.77-9.95)	0.55 (0.34-0.77)	0.48 (0.32-0.63)
	High-risk <sup>d</sup>	70 (13 asthmatic)	0.73 (0.59-0.87)	0.80 (0.62-0.94)	0.54 (0.23-0.77)	0.93 (0.86-0.98)	0.64 (0.40-0.90)	0.90 (0.84-0.95)	7.67 (2.92-39.46)	0.50 (0.24-0.81)	0.58 (0.32-0.78)
<b>External Validation - MAAS: 11 years</b>	Unselected	267 (29 asthmatic)	0.73 (0.63-0.82)	0.79 (0.68-0.88)	0.55 (0.38-0.72)	0.90 (0.87-0.94)	0.41 (0.29-0.55)	0.94 (0.92-0.96)	5.71 (3.44-9.85)	0.50 (0.30-0.71)	0.47 (0.33-0.62)
	High-risk <sup>c</sup>	169 (22 asthmatic)	0.72 (0.61-0.82)	0.76 (0.61-0.88)	0.55 (0.36-0.73)	0.89 (0.84-0.94)	0.43 (0.29-0.59)	0.93 (0.90-0.96)	5.01 (2.75-9.65)	0.51 (0.30-0.74)	0.48 (0.32-0.63)
	High-risk <sup>d</sup>	64 (10 asthmatic)	0.75 (0.59-0.90)	0.73 (0.47-0.94)	0.60 (0.30-0.90)	0.91 (0.83-0.98)	0.55 (0.31-0.86)	0.92 (0.87-0.98)	6.48 (2.40-32.40)	0.44 (0.11-0.80)	0.57 (0.30-0.78)

450 <sup>a</sup> The CAPE model was developed using a SVM classification algorithm using a radial bias function kernel (C=45.1, gamma=0.0054). The  
 451 model was trained on the training dataset consisting of individuals with complete data, with controls under-sampled to obtain a 1:1  
 452 class ratio.

453 <sup>b</sup> The CAPP model was developed using a SVM classification algorithm using a linear kernel (C=0.33), and was trained on the training  
 454 dataset consisting of individuals with complete data, with cases oversampled by 300% and controls under-sampled to obtain a 1:1  
 455 class ratio.

456 Performance measures in the IOWBC test set and MAAS are evaluated at thresholds of 0.42 (CAPE model) and 0.73 (CAPP model).

457 <sup>c</sup> High risk defined as the child having at least one parent with allergic disease (asthma, eczema or allergic rhinitis)

458 <sup>d</sup> High risk defined as a child with both parents with allergic disease (asthma, eczema or allergic rhinitis)

459 Table 3 Comparison of the prediction models developed using machine learning and traditional logistic regression algorithms

	Algorithm (dataset)	Balanced accuracy	AUC	Sensitivity	Specificity	PPV	NPV	LR+	LR-	F1 score
CAPE Model	SVM <sup>a</sup> (IOWBC test set)	0.71 (0.62-0.78)	0.71 (0.61-0.80)	0.74 (0.56-0.88)	0.68 (0.62-0.74)	0.26 (0.21-0.32)	0.94 (0.91-0.97)	2.29 (1.69-3.01)	0.39 (0.18-0.63)	0.38 (0.31-0.46)
	Logistic regression <sup>b</sup> (IOWBC test set)	0.62 (0.54-0.71)	0.59 (0.48-0.70)	0.44 (0.27-0.59)	0.80 (0.75-0.85)	0.25 (0.17-0.35)	0.90 (0.88-0.93)	2.22 (1.33-3.43)	0.70 (0.49-0.91)	0.32 (0.21-0.43)
	Logistic regression (MAAS 8YR)	0.60 (0.52-0.68)	0.47 (0.56-0.59)	0.39 (0.24-0.55)	0.80 (0.75-0.85)	0.21 (0.13-0.29)	0.91 (0.89-0.93)	2.00 (1.15-3.02)	0.75 (0.55-0.96)	0.28 (0.17-0.38)
	Logistic regression (MAAS 8YR)	0.58 (0.50-0.67)	0.49 (0.36-0.61)	0.38 (0.22-0.53)	0.79 (0.74-0.84)	0.18 (0.10-0.25)	0.91 (0.89-0.94)	1.79 (0.96-2.84)	0.79 (0.57-1.01)	0.24 (0.14-0.34)
	SVM <sup>c</sup>	0.80 (0.70-0.89)	0.82 (0.71-0.91)	0.72 (0.52-0.88)	0.88 (0.83-0.92)	0.47 (0.38-0.62)	0.95 (0.92-0.98)	5.99 (3.79-10.11)	0.32 (0.13-0.54)	0.56 (0.45-0.70)
	Logistic regression <sup>d</sup> (IOWBC test set)	0.77 (0.68-0.85)	0.76 (0.63-0.88)	0.80 (0.64-0.96)	0.74 (0.67-0.80)	0.33 (0.26-0.41)	0.96 (0.93-0.99)	3.08 (2.24-4.34)	0.27 (0.05-0.50)	0.47 (0.38-0.56)
CAPP Model	Logistic regression (MAAS 8YR)	0.72 (0.64-0.78)	0.77 (0.67-0.85)	0.82 (0.70-0.94)	0.61 (0.55-0.67)	0.22 (0.18-0.26)	0.96 (0.94-0.99)	2.12 (1.68-2.66)	0.30 (0.10-0.52)	0.35 (0.29-0.41)
	Logistic regression (MAAS 8YR)	0.71 (0.62-0.78)	0.76 (0.64-0.86)	0.79 (0.66-0.93)	0.62 (0.56-0.68)	0.20 (0.17-0.25)	0.96 (0.93-0.99)	2.10 (1.62-2.67)	0.33 (0.11-0.59)	0.32 (0.26-0.39)

460 The CAPE and CAPP machine learning and equivalent logistic regression models were evaluated at age 10 in the IOWBC, in individuals  
461 in the respective test sets for each model. Validation in MAAS was performed to evaluate the prediction of asthma at 8 years (MAAS  
462 8YR) and 11 years (MAAS 11YR).

463 Performance measures were evaluated at the optimal model thresholds, which maximised the Youden's Index: <sup>a</sup>=0.42, <sup>b</sup>=0.48, <sup>c</sup>=0.73,  
464 <sup>d</sup>=0.42.

465 Table 4 Reclassification table showing changes in prediction categorisation between the PARS and CAPP model

Predicted risk (PARS model)	Predicted risk (CAPP model)			Reclassified by CAPP (%)			
	No asthma	Asthma	Total	Increased risk	Decreased risk	Correctly reclassified	NRI
<b>No asthma at age 10 (n=149)</b>							
No asthma	130	<b>9<sup>b</sup></b>	139				
Asthma	<b>1<sup>a</sup></b>	9	10	9(6%)	1(<1%)	1(<1%)	-0.05
<b>Total</b>	131	18	149				
<b>Asthma at age 10 (n=25)</b>							
No asthma	7	<b>8<sup>a</sup></b>	15				
Asthma	<b>0<sup>b</sup></b>	10	10	8(32%)	0(0%)	8(32%)	0.32
<b>Total</b>	7	18	25				
			Total	17	1	9	

466 Reclassification table comparing the change in individual asthma predictions with the CAPP model instead of the PARS model  
467 (reference model). For the PARS model, categorisations of predictions as asthmatic and non-asthmatic was based on the optimal  
468 threshold (cutoff=7) as defined in their original publication. Results are presented separately for individuals who were asthmatic and  
469 non-asthmatic at age 10. Values in bold identify the number of individuals who were reclassified into a more appropriate (<sup>a</sup>) or less  
470 appropriate (<sup>b</sup>) risk group by the CAPP model with respect to the risk classifications made by the PARS model. NRI=net reclassification  
471 index is given separately for true asthmatics and non-asthmatics.

472 **STELAR/UNICORN Investigators**

473 Graham C Roberts, Human Development and Health, Faculty of Medicine, University of

474 Southampton, David Hide Asthma and Allergy Research Centre, Isle of Wight and NIHR

475 Southampton Biomedical Research Centre, University Hospitals Southampton NHS Foundation

476 Trust, Southampton, UK

477 Steve W Turner, Child Health, University of Aberdeen, Aberdeen, UK

478 Raquel Granell, MRC Integrative Epidemiology Unit, Population Health Sciences, Bristol Medical

479 School, University of Bristol, UK

480 Sadia Haider, National Heart and Lung Institute, Imperial College London, UK

481 Sara Fontanella, National Heart and Lung Institute, Imperial College London, UK

482 Paul Cullinan, National Heart and Lung Institute, Imperial College London, UK



483 **REFERENCES**

- 484 1. Akdis CA, Allergy EAo, Immunology C, Agache I. Global Atlas of Asthma: European  
485 Academy of Allergy and Clinical Immunology; 2013.
- 486 2. Licari A, Castagnoli R, Brambilla I, et al. Asthma Endotyping and Biomarkers in Childhood  
487 Asthma. *Pediatric Allergy, Immunology and Pulmonology* 2018;31:44-55.
- 488 3. Pavord ID, Beasley R, Agusti A, et al. After asthma: redefining airways diseases. *The*  
489 *Lancet* 2018;391:350-400.
- 490 4. Ullmann N, Mirra V, Di Marco A, et al. Asthma: Differential Diagnosis and Comorbidities.  
491 *Frontiers in Pediatrics* 2018;6:276.
- 492 5. Isabella Annesi-Maesano CS, Denis Caillaud, Frédéric de Blay, François Lavaud, Denis  
493 Charpin and Chantal Raheissou. Factors related to under-diagnosis and undertreatment of  
494 childhood asthma in metropolitan France. *Multidisciplinary Respiratory Medicine* 2012;7.
- 495 6. Bush A, Fleming L, Saglani S. Severe asthma in children. *Respirology* 2017;22:886-97.
- 496 7. Kothalawala DM, Kadalayil L, Weiss VBN, et al. Prediction models for childhood asthma:  
497 A systematic review. *Pediatric Allergy and Immunology* 2020;31:616-27.
- 498 8. James G, Witten D, Hastie T, Tibshiran R. *An Introduction to Statistical Learning*. 1 ed:  
499 Springer-Verlag New York; 2013.
- 500 9. Singal AG, Mukherjee A, Elmunzer BJ, et al. Machine learning algorithms outperform  
501 conventional regression models in predicting development of hepatocellular carcinoma. *The*  
502 *American Journal of Gastroenterology* 2013;108:1723-30.
- 503 10. Waljee AK, Higgins PD, Singal AG. A primer on predictive models. *Clinical and*  
504 *Translational Gastroenterology* 2014;5:e44.
- 505 11. Proserpi MC, Marinho S, Simpson A, Custovic A, Buchan IE. Predicting phenotypes of  
506 asthma and eczema with machine learning. *BMC Medical Genomics* 2014;7 Suppl 1:S7.
- 507 12. Finkelstein J, Jeong IC. Machine learning approaches to personalize early prediction of  
508 asthma exacerbations. *Annals of the New York Academy of Sciences* 2017;1387:153-65.
- 509 13. Goto T, Camargo CA, Jr., Faridi MK, Yun BJ, Hasegawa K. Machine learning approaches  
510 for predicting disposition of asthma and COPD exacerbations in the ED. *The American Journal of*  
511 *Emergency Medicine* 2018;36:1650-4.
- 512 14. Patel SJ, Chamberlain DB, Chamberlain JM. A Machine Learning Approach to Predicting  
513 Need for Hospitalization for Pediatric Asthma Exacerbation at the Time of Emergency  
514 Department Triage. *Academic Emergency Medicine : Official Journal of the Society for*  
515 *Academic Emergency Medicine* 2018;25:1463-70.
- 516 15. Saglani S, Custovic A. Childhood Asthma: Advances Using Machine Learning and  
517 Mechanistic Studies. *American Journal of Respiratory and Critical Care Medicine* 2018;199:414-  
518 22.
- 519 16. Chatzimichail EA, Rigas AG, Paraskakis EN. An Artificial intelligence technique for the  
520 prediction of persistent asthma in children. *Proceedings of the 10th IEEE International*  
521 *Conference on Information Technology and Applications in Biomedicine*2010:1-4.
- 522 17. Chatzimichail E, Paraskakis E, Rigas A. An Evolutionary Two-Objective Genetic Algorithm  
523 for Asthma Prediction. 2013 UKSim 15th International Conference on Computer Modelling and  
524 Simulation2013:90-4.

- 525 18. Chatzimichail E, Paraskakis E, Sitzimi M, Rigas A. An intelligent system approach for  
526 asthma prediction in symptomatic preschool children. *Computational and Mathematical*  
527 *Methods in Medicine* 2013;2013:240182.
- 528 19. Chatzimichail E, Paraskakis E, Rigas A. Predicting Asthma Outcome Using Partial Least  
529 Square Regression and Artificial Neural Networks. *Advances in Artificial Intelligence*  
530 2013;2013:1-7.
- 531 20. Krautenbacher N, Flach N, Böck A, et al. A strategy for high-dimensional multivariable  
532 analysis classifies childhood asthma phenotypes from genetic, immunological, and  
533 environmental factors. *Allergy* 2019.
- 534 21. Arshad SH, Holloway JW, Karmaus W, et al. Cohort Profile: The Isle Of Wight Whole  
535 Population Birth Cohort (IOWBC). *International Journal of Epidemiology* 2018;47:1043-4i.
- 536 22. Azur MJ, Stuart EA, Frangakis C, Leaf PJ. Multiple imputation by chained equations: what  
537 is it and how does it work? *International Journal of Methods in Psychiatric Research*  
538 2011;20:40-9.
- 539 23. Haibo He YB, Eduardo A. Garcia, and Shutao Li. ADASYN: Adaptive Synthetic Sampling  
540 Approach for Imbalanced Learning. *IEEE International Joint Conference on Neural Networks*  
541 *(IEEE World Congress on Computational Intelligence)*. Hong Kong2008:1322-8.
- 542 24. Custovic A, Simpson BM, Murray CS, Lowe L, Woodcock A. The National Asthma  
543 Campaign Manchester Asthma and Allergy Study. *Pediatric Allergy and Immunology : Official*  
544 *Publication of the European Society of Pediatric Allergy and Immunology* 2002;13:32-7.
- 545 25. Scottish Intercollegiate Guidelines Network BTS. British guideline on the management of  
546 asthma: A national clinical guideline2019.
- 547 26. Oksel C, Granell R, Haider S, et al. Distinguishing Wheezing Phenotypes from Infancy to  
548 Adolescence. A Pooled Analysis of Five Birth Cohorts. *Annals of the American Thoracic Society*  
549 2019;16:868-76.
- 550 27. R Core Team. R: A language and environment for statistical computing. Vienna, Austria:  
551 R Foundation for Statistical Computing; 2013.
- 552 28. Fabian Pedregosa GV, Alexandre Gramfort, Vincent Michel, Bertrand Thirion, Olivier  
553 Grisel, Mathieu Blondel, Peter Prettenhofer, Ron Weiss, Vincent Dubourg, Jake Vanderplas,  
554 Alexandre Passos, David Cournapeau, Matthieu Brucher, Matthieu Perrot, Édouard Duchesnay.  
555 Scikit-learn: Machine Learning in Python. *Journal of Machine Learning Research*  
556 2011;12:2825–30.
- 557 29. Guillaume Lemaître FN, Christos K. Aridas. Imbalanced-learn: A Python Toolbox to Tackle  
558 the Curse of Imbalanced Datasets in Machine Learning. *Journal of Machine Learning Research*  
559 2017;18:1-5.
- 560 30. Vial Dupuy A, Amat F, Pereira B, Labbe A, Just J. A Simple Tool to Identify Infants at High  
561 Risk of Mild to Severe Childhood Asthma: The Persistent Asthma Predictive Score. *Journal of*  
562 *Asthma* 2011;48:1015-21.
- 563 31. Biagini Myers JM, Schauburger E, He H, et al. A Pediatric Asthma Risk Score to better  
564 predict asthma development in young children. *Journal of Allergy and Clinical Immunology*  
565 2018;143:1803-10.e2.
- 566 32. Global Initiative for Asthma G. Global Strategy for Asthma Management and  
567 Prevention2018.

- 568 33. Isabelle Guyon JW, Stephen Barnhill. Gene Selection for Cancer Classification using  
569 Support Vector Machines. *Machine Learning* 2002;46:389-422.
- 570 34. Strobl C, Boulesteix A-L, Zeileis A, Hothorn T. Bias in random forest variable importance  
571 measures: Illustrations, sources and a solution. *BMC Bioinformatics* 2007;8.
- 572 35. Van Wonderen KE, Van Der Mark LB, Mohrs J, Bindels PJ, Van Aalderen WM, Ter Riet G.  
573 Different definitions in childhood asthma: how dependable is the dependent variable?  
574 *European Respiratory Journal* 2010;36:48-56.  
575