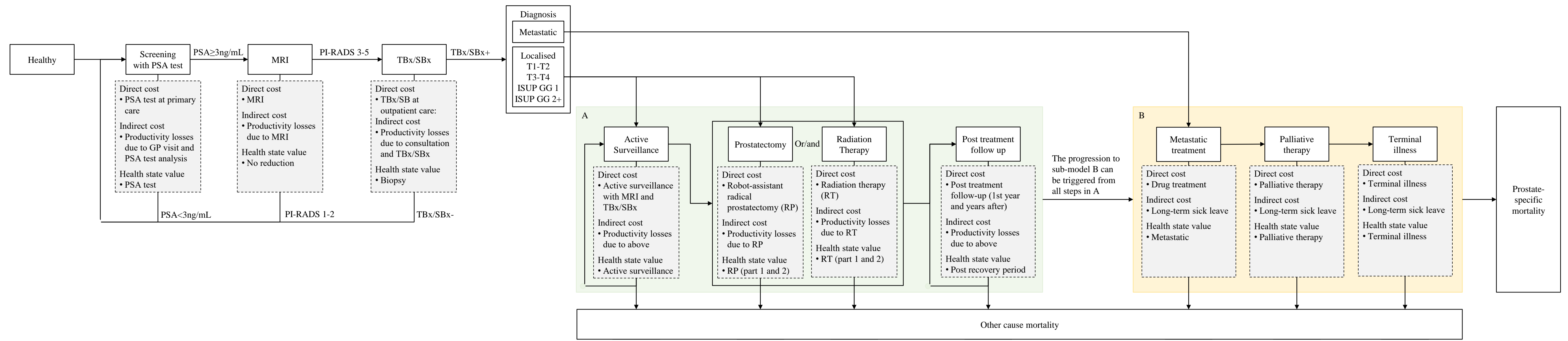
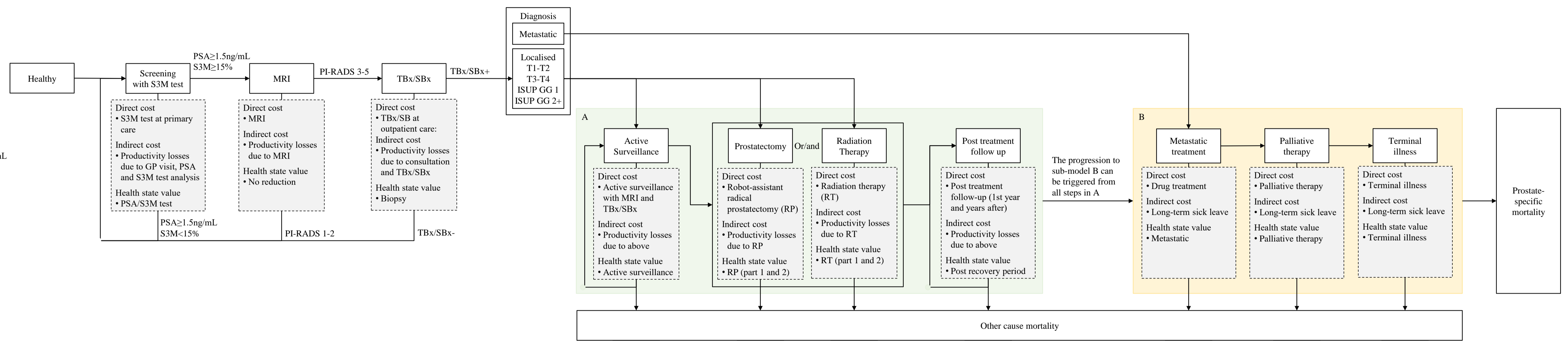


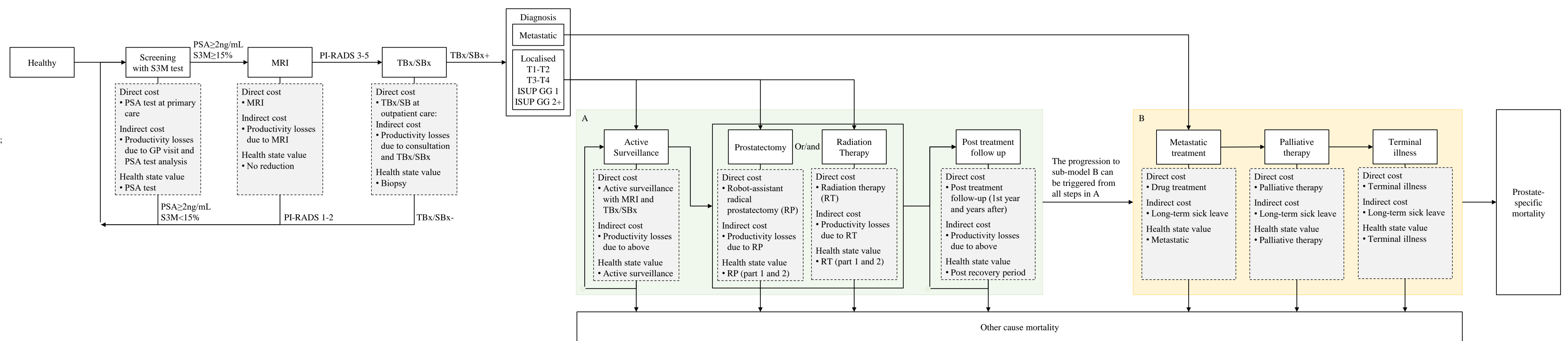
Strategy II: PSA+MRI+TBx/SBx  
 • PSA threshold: PSA $\geq$ 3ng/mL



Strategy III: S3M+MRI+TBx/SBx  
 • Reflex threshold of S3M: PSA $\geq$ 1.5ng/mL  
 • S3M $\geq$ 15% for MRI



Strategy IV: S3M+MRI+TBx/SBx  
 • Reflex threshold of S3M: PSA $\geq$ 2ng/mL;  
 • S3M $\geq$ 15% for MRI



Sub-model A: Treatments for patients with localised prostate cancer

Sub-model B: Treatments for patients with metastatic cancer; Palliative therapy and Terminal care.

GG: ISUP Grade Group; GP: General Practitioner; ISUP: International Society of Urological Pathology; MRI: Magnetic Resonance Imaging; PI-RADS: Prostate Imaging-Reporting and Data System; PSA: Prostate-Specific Antigen; RP: Radical Prostatectomy; RT: Radiation Therapy; S3M: Stockholm 3 test; SBx: Systematic Biopsy; TBx/SBx: combined Targeted and Systematic Biopsies