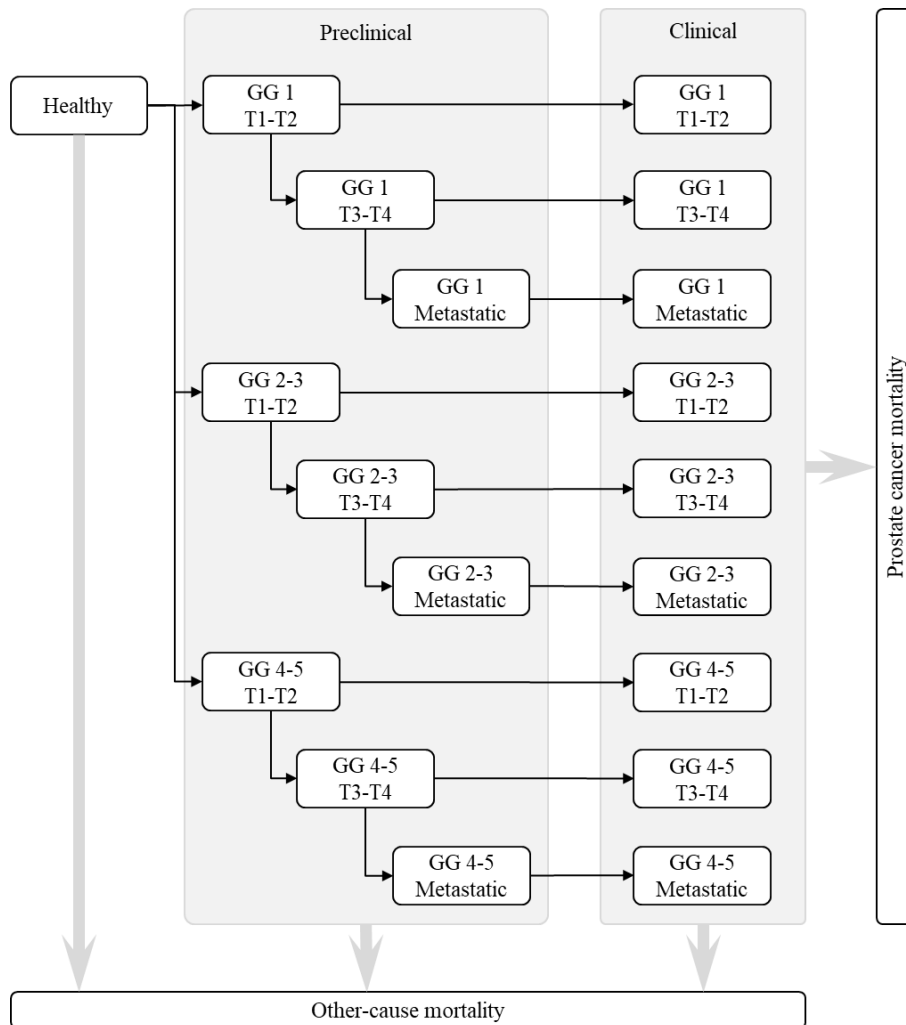


Supplementary Materials I

Figure S1 Natural history simulation model



The model reflects cancer onset by ISUP (GG 1; GG 2-3; GG 4-5), with progression by T-stage and to metastatic cancer. Preclinical cancers may be clinically diagnosed, with cause-specific survival from the time of clinical diagnosis. Death due to other causes is represented as a competing event. ISUP: International Society of Urological Pathology; GG: grade group

Appendix A. Test characteristics parameter adjustment

A1 Methods

For the adjustment parameters used for the strategy I using prostate-specific antigen (PSA) test, magnetic resonance imaging (MRI) and combined targeted and systematic biopsy (TBx/SBx), we reviewed the 25 papers used in the Agreement analysis from Drost (2019) ¹ and extracted data for the extended meta-analysis. The studies used for the agreement analysis Strategies are conditional on biopsy naïve patients with PSA \geq 3 (Table S1).

For the adjustment parameters used for Strategy III and IV, which were using TBx/SBx on patients with positive MRI given prostate-specific antigen (PSA) \geq 1.5ng/mL and Stockholm3 (S3M) test \geq 15% and given with PSA \geq 2ng/mL and S3M \geq 15%, respectively, we used the data from STHLM3-MR Phase I study which patients with negative MRI results also undertook SBx ². This would provide additional information on the true negative and true positive fractions.

For the test parameter Pr(MRI+|PSA+, GG=0, MRI+TBx/SBx), we calculated the adjusted 95% confidence interval (CI) using following information:

$$p1 = y1/n1, p2 = y2/n2, ratio = p1/p2$$

$$meanlog = \log(ratio), varlog = (1-p1)/p1/n1 + (1-p2)/p2/n2$$

$$lower = meanlog - 1.96 * \sqrt{varlog}, upper = meanlog + 1.96 * \sqrt{varlog}$$

where y1 represents the number of benign cancers on MRI+ detected by TBx/SBx and n2 represents the total number of negative MRI results (MRI-) and the number of benign cancers on MRI+ detected by TBx/SBx from the STHLM3-MR study; y2 represents the number of benign cancers on MRI+ detected by TB/SBx and benign cancers detected by SBx on MRI- using the Cochrane Review ¹; n2 represents the number of benign cancers on MRI+ detected by TBx/SBx and number of MRI- results from the Cochrane Review ¹.

For the test parameters Pr(MRI+|PSA+, GG=1, MRI+TBx/SBx) and Pr(MRI+|PSA+, GG \geq 2, MRI+TBx/SBx), the parameter values were equal to 1 by the strategy matrix described (see A1.2). We used the 95% CI results directly from the meta-analysis of the adjusted parameters.

For the test characteristics Pr(MRI+|PSA \geq 1.5, S3M \geq 15%, GG=0, MRI+TBx/SBx) and Pr(MRI+|PSA \geq 2, S3M \geq 15%, GG=0, MRI+TBx/SBx), we calculated the adjusted 95% CI using following information:

$$p1 = y1/n1, p2 = y2/n2, \text{ratio} = p1/p2$$

$$\text{meanlog} = \log(\text{ratio}), \text{varlog} = (1-p1)/p1/n1 + (1-p2)/p2/n2$$

$$\text{lower} = \text{meanlog} - 1.96 * \text{sqrt}(\text{varlog}), \text{upper} = \text{meanlog} + 1.96 * \text{sqrt}(\text{varlog})$$

where $y1$ represents the number of benign cancers on positive PSA and S3M test and MRI+ detected by TBx/SBx and $n2$ represents the total number of negative MRI results (MRI-) and the number of benign cancers on positive PSA and S3M tests and MRI+ detected by TBx/SBx from the STHLM3-MR study; $y2$ represents the number of benign cancers on positive PSA and S3M test and MRI+ detected by TB/SBx and benign cancers detected by SBx on MRI- using the STHLM3-MR Phase I study ²; and $n2$ represents the number of benign cancers on positive PSA and S3M tests and MRI+ detected by TBx/SBx and number of MRI- results from the STHLM3-MR Phase I study ².

For the rest test characteristics in the base case including $\text{Pr}(\text{MRI+}|\text{PSA} \geq 1.5, \text{S3M} \geq 15\%, \text{GG}=1, \text{MRI+TBx/SBx})$, $\text{Pr}(\text{MRI+}|\text{PSA} \geq 1.5, \text{S3M} \geq 15\%, \text{GG} \geq 2, \text{MRI+TBx/SBx})$, $\text{Pr}(\text{MRI+}|\text{PSA} \geq 2, \text{S3M} \geq 15\%, \text{GG}=1, \text{MRI+TBx/SBx})$ and $\text{Pr}(\text{MRI+}|\text{PSA} \geq 2, \text{S3M} \geq 15\%, \text{GG} \geq 2, \text{MRI+TBx/SBx})$, the parameter values were equal to 1 given the strategy matrix described (see A1.2). We used 95% CI results from the binomial tests for the adjusted parameters, based on the proportion of $\text{GG}=1$ or $\text{GG} \geq 2$ cancers detected by TBx/SBx on MRI+ to the total number of $\text{GG}=1$ or $\text{GG} \geq 2$ cancers detected by SBx on MRI- and TBx/SBx on MRI+ from the STHLM3-MR Phase I study ².

A1.1 Selection criteria of the studies for meta-analyses

Based on the summarised characteristics of the agreement studies in Drost et al. ¹, we excluded Boesen (2017), Jambor (2017) and Costa (2013) which had insufficient data. We also excluded Petier (2015) which was unable to differentiate the number of patients with negative biopsies between MRI- and MRI+, Delongchamps (2013) which did not have details on the number of patients for $\text{GG}=1$ and $\text{GG} \geq 2$, and Chen (2015) which only focused on patients with $\text{GG} \geq 2$. In addition, Okcelik (2016) which used PCA3 prior to MRI with a 0-1 scale was excluded. Table S1 summarised the study characteristics.

For the adjustment parameters used for biopsy-naïve patients, in total, 16 studies were included for the meta-analyses. Twelve studies used MRI scoring with PI-RADS scale 1-5, of which 10 studies used $\text{PI-RADS} \geq 3$ as a threshold for MRI+ and two studies used $\text{PI-RADS} \geq 4$ as threshold for MRI+ (Jambor (2015) and Kim (2017)). Lee (2016), Lee

(2017) and Tontilla (2016) took MRI scoring with a scale of 1-4 and score 2 as the threshold for MRI+. A different type of scale of MRI scoring was used by Cool (2016).

Table S1 Study characteristics

Study	Setting	MRI scale; Threshold	MRI TBx Technique	No. Cores MRI TBx	No. Cores SBx	Participants Biopsy naïve	Median age (Range/SD)	Median PSA (ng/ml) (Range/SD)
Biopsy-naïve patients								
Albert (2017)	Netherlands	1-5, ≥ 3	Software	2 cores/lesion	6/12 (Group1/2,3)	74	73 (72-74)	4.2 (3.4-5.8)
Boesen (2018)	Denmark	1-5, ≥ 3	Software	1-2 cores/lesion	10-core	1020	67 (61-71)	8 (5.7-13)
Castellucci (2017)	Spain	1-5, ≥ 3	Cognitive	2 cores	Not reported	168	61 (8)	8.3 (6.1)
Cool (2016)	Canada	Other	Software	1-3 cores/lesion	12-core+2 cores	50	59 (8)	6 (3.5)
Filson (2016)	USA	1-5, ≥ 3	Software	1 core, longest region	12-core	329	64 (59-69)	5.8 (4.4-8.1)
Garcia Bennett (2017)	Spain	1-5, ≥ 3	Cognitive	Average 1.8 cores	12-core	60	64 (6.7)	7.2 (6-9.4)
Grönberg (2018)	Sweden, Norway	1-5, ≥ 3	Software	2-3 cores/lesion	12-core	387	64 (45-74)	6.3 (4.4)
Jambor (2015)	Finland, Slovakia	1-5, ≥ 4	Cognitive	5 cores	12-core	53	66 (47-76)	7.4 (4-14)
Kim (2017)	USA	1-5, ≥ 4	Software, Cognitive	Not reported	12-core	183	64 (7)	10.2 (15.1)
Lee (2016)	Korea	1-4, ≥ 2	Cognitive	1 core/lesion	12-core	76	66 (43-83)	6.3 (3.3-9.8)
Lee (2017)	Korea	1-4, ≥ 2	Cognitive	Not reported	12-core	123	62 (10)	6.4 (1.8)
Panebianco (2015)	Italy	1-5, ≥ 3	Cognitive	12-core TBx+SBx	14-core	570	64 (51-82)	Not reported
Pokorny (2014)	Australia	1-5, ≥ 3	In-bore	2-3 cores/lesion	12-core	223	63 (57-68)	5.3 (4.1-6.6)
Rouvière (2019)	France	1-5, ≥ 3	Software	1-2 cores/lesion	12-core	251	64 (59-68)	6.5 (5.6-9.6)
Tontilla (2016)	Finland	1-4, ≥ 2	Cognitive	1-2 cores/lesion; max. 2 lesions	10 to 12-core	53	63 (60-66)	6.1 (4.2-9.9)
Van der Leest (2018)	Netherlands	1-5, ≥ 3	In-bore	2-4 cores	12-core	626	65 (59-68)	6.4 (4.6-8.2)

Source: Drost et al ¹. There are three common techniques to guide the TBx: i) cognitively, where the urologist has knowledge of the location of the targeted lesion from the MRI; ii) fusion, where the MRI is fused with the real-time ultrasound images to target the lesion; and iii) the direct in-bore technique, where a patient's biopsy is undertaken in a MRI suite, allowing for real-time MR-imaging and lesion targeting ^{3,4}. However, there is little evidence that any technique is superior over another ³. MRI: Magnetic Resonance Imaging; PSA: Prostate-Specific Antigen; SBx: Systematic Biopsy; SD: Standard Deviation; TBx: Targeted Biopsy; USA: United States of America

A1.2 Strategy matrix

Strategy matrix PSA+MRI+TBx/SBx

	MRI-	MRI+TBx			
SBx		GG=0	GG=1	GG \geq 2	SBx Total
GG=0	x	a	d	g	S0
GG=1	y	b	e	h	S1
GG \geq 2	z	c	f	i	S2
MRI Total	M0	T0	T1	T2	

GG* definition

 	GG*=0	 	GG*=1	 	GG* \geq 2
 	MRI+, TBx- GG*=0				
 	MRI+, TBx+, SBx+ GG*=1				
 	MRI+, TBx+, SBx+ GG* \geq 2				

Strategy matrix S3M+MRI+TBx/SBx

	MRI-	MRI+TBx			
SBx		GG=0	GG=1	GG \geq 2	SBx Total
GG=0	x'	a	d	g	S0
GG=1	y'	b	e	h	S1
GG \geq 2	z'	c	f	i	S2
MRI Total	M0	T0	T1	T2	

GG* definition

GG*=0	a+M0-y'-z'	 	GG*=1	b+d+e+y'	 	GG* \geq 2	c+f+g+h+i+z'
 	MRI+, TBx- GG*=0						
 	MRI+, TBx+, SBx+ GG*=1						
 	MRI+, TBx+, SBx+ GG* \geq 2						

Strategy matrix PSA+MRI+TBx

	MRI-	MRI+TBx			
SBx		GG=0	GG=1	GG \geq 2	SBx Total
GG=0	x	a	d	g	S0
GG=1	y	b	e	h	S1
GG \geq 2	z	c	f	i	S2
MRI Total	M0	T0	T1	T2	

GG* definition

 	GG*=0	 	GG*=1	 	GG* \geq 2
 	MRI+, TBx- GG*=0				
 	MRI+, TBx+ GG*=1				
 	MRI+, TBx+ GG* \geq 2				

Strategy matrix S3M+MRI+TBx

SBx	MRI-	MRI+TBx			SBx Total
		GG=0	GG=1	GG≥2	
GG=0	x'	a	d	g	S0
GG=1	y'	b	e	h	S1
GG≥2	z'	c	f	i	S2
MRI Total	M0	T0	T1	T2	

GG* definition

GG*=0 T0+M0-y'-z' GG*=1 d+e+f+y' GG*≥2 g+h+i+z'

■ MRI+, TBx- | GG*=0

■ MRI+, TBx+ | GG*=1

■ MRI+, TBx+ | GG*≥2

Strategy matrix MRI-SBx, MRI+TBx/SBx (for adjustment)

SBx	MRI-	MRI+TBx			SBx Total
		GG=0	GG=1	GG≥2	
GG=0	x	a	d	g	S0
GG=1	y	b	e	h	S1
GG≥2	z	c	f	i	S2
MRI Total	M0	T0	T1	T2	

GG* definition

■ GG=0 ■ GG=1 ■ GG≥2

■ MRI+, TBx-, SBx- | GG=0

■ MRI+, TBx+, SBx+ | GG=1

■ MRI+, TBx+, SBx+ | GG≥2

A1.3 Meta-analyses: Adjustment for probability of positive MRI results given positive PSA and disease stages under strategy $PSA+MRI+TBx/SBx$

(1) $\Pr(MRI+ | PSA+, GG=0, Cochrane) / \Pr(MRI+ | PSA+, GG^*=0, Cochrane)$

$$= (a/(a+x)) / (a/(a+x+y+z)) = (a+x+y+z)/(a+x)$$

(2) $\Pr(MRI+ | PSA+, GG=1, Cochrane) / \Pr(MRI+ | PSA+, GG^*=1, Cochrane)$

$$= ((b+d+e)/(y+b+d+e)) / ((b+d+e)/(b+d+e)) = (b+d+e)/(y+b+d+e)$$

(3) $\Pr(MRI+ | PSA+, GG=2+, Cochrane) / \Pr(MRI+ | PSA+, GG^*=2+, Cochrane)$

$$= ((c+f+g+h+i)/(z+c+f+g+h+i)) / ((c+f+g+h+i)/(c+f+g+h+i)) = (c+f+g+h+i)/(z+c+f+g+h+i)$$

For (1) (2) (3)

GG: defined by Strategy matrix MRI-SBx, MRI+TBx/SBx (for adjustment)

GG*: defined by Strategy matrix PSA+MRI+TBx/SBx

A1.4 Meta-analyses: Adjustment for probability of positive MRI results given positive PSA and disease stages under strategy $PSA+MRI+TBx$

(4) $\Pr(MRI+ | PSA+, GG=0, Cochrane) / \Pr(MRI+ | PSA+, GG^*=0, Cochrane)$

$$= (a/(a+x)) / ((a+b+c)/(a+b+c+x+y+z))$$

(5) $\Pr(MRI+ | PSA+, GG=1, Cochrane) / \Pr(MRI+ | PSA+, GG^*=1, Cochrane)$

$$= ((b+d+e)/(y+b+d+e)) / ((d+e+f)/(d+e+f)) = (b+d+e)/(y+b+d+e)$$

(6) $\Pr(MRI+ | PSA+, GG=2+, Cochrane) / \Pr(MRI+ | PSA+, GG^*=2+, Cochrane)$

$$= ((c+f+g+h+i)/(z+c+f+g+h+i)) / ((g+h+i)/(g+h+i)) = (c+f+g+h+i)/(z+c+f+g+h+i)$$

For (4) (5) (6)

GG: defined by Strategy matrix MRI-SBx, MRI+TBx/SBx (for adjustment)

GG*: defined by Strategy matrix PSA+MRI+TBx

A1.5 Adjustment for probability of positive MRI results given positive S3M and disease stages under strategy $S3M+MRI+TBx/SBx$

(7) $\Pr(MRI+ | S3M+, GG=0, Phase I) / \Pr(MRI+ | S3M+, GG^*=0, Phase I)$

$$= (a/(a+x)) / (a/(a+M0-y'-z')) = (a+M0-y'-z')/(a+x)$$

(8) $\Pr(\text{MRI+} \mid \text{S3M+}, \text{GG}=1, \text{Phase I}) / \Pr(\text{MRI+} \mid \text{S3M+}, \text{GG}^*=1, \text{Phase I})$

$$= ((b+d+e)/(y+b+d+e)) / ((b+d+e)/(b+d+e+y')) = (b+d+e+y')/(y+b+d+e)$$

(9) $\Pr(\text{MRI+} \mid \text{S3M+}, \text{GG}=1, \text{Phase I}) / \Pr(\text{MRI+} \mid \text{S3M+}, \text{GG}^*\geq 2, \text{Phase I})$

$$= ((c+f+g+h+i)/(z+c+f+g+h+i)) / ((c+f+g+h+i)/(c+f+g+h+i+z')) = (c+f+g+h+i+z')/(z+c+f+g+h+i)$$

GG: defined by Strategy matrix MRI-SBx, MRI+TBx/SBx (for adjustment)

GG*: defined by Strategy matrix S3M+MRI+TBx/SBx

A1.6 Adjustment for probability of positive MRI results given positive S3M and disease stages under strategy

S3M+MRI+TBx

(10) $\Pr(\text{MRI+} \mid \text{S3M+}, \text{GG}=0, \text{Phase I}) / \Pr(\text{MRI+} \mid \text{S3M+}, \text{GG}^*=0, \text{Phase I})$

$$= (a/(a+x)) / ((a+b+c)/(a+b+c+M0-y'-z'))$$

(11) $\Pr(\text{MRI+} \mid \text{S3M+}, \text{GG}=1, \text{Phase I}) / \Pr(\text{MRI+} \mid \text{S3M+}, \text{GG}^*=1, \text{Phase I})$

$$= ((b+d+e)/(y+b+d+e)) / ((d+e+f)/(d+e+f+y'))$$

(12) $\Pr(\text{MRI+} \mid \text{S3M+}, \text{GG}=1, \text{Phase I}) / \Pr(\text{MRI+} \mid \text{S3M+}, \text{GG}^*\geq 2, \text{Phase I})$

$$= ((c+f+g+h+i)/(z+c+f+g+h+i)) / ((g+h+i)/(g+h+i+z'))$$

GG: defined by Strategy matrix MRI-SBx, MRI+TBx/SBx (for adjustment)

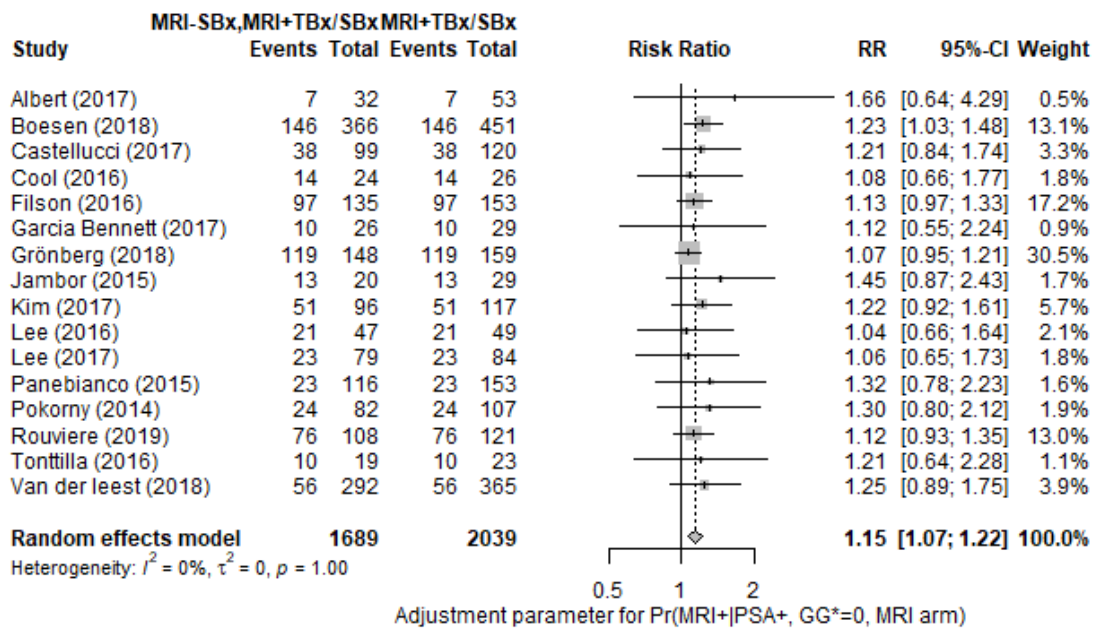
GG*: defined by Strategy matrix S3M+MRI+TBx

A2 Results of adjustment parameters

A2.1 Meta-analyses: Adjustment for probability of positive MRI results given positive PSA and disease stages under strategy $PSA+MRI+TBx/SBx$

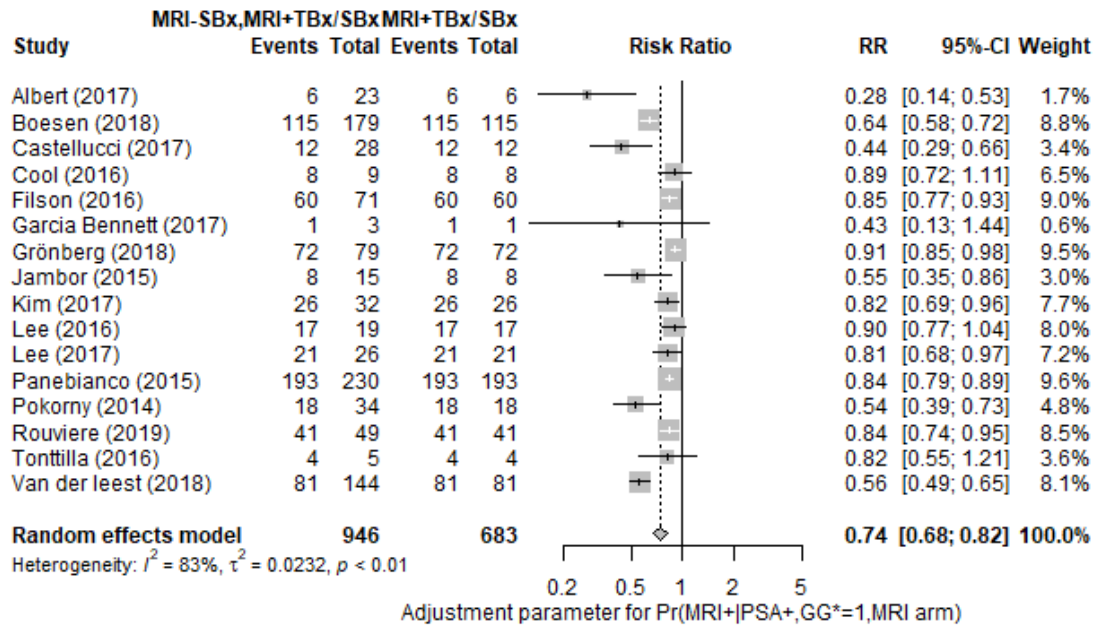
(1) $\Pr(MRI+ | PSA+, GG=0, \text{Cochrane}) / \Pr(MRI+ | PSA+, GG^*=0, \text{Cochrane})$

Adjustment parameter for $\Pr(MRI+|PSA+, GG^*=0, \text{MRI arm})$



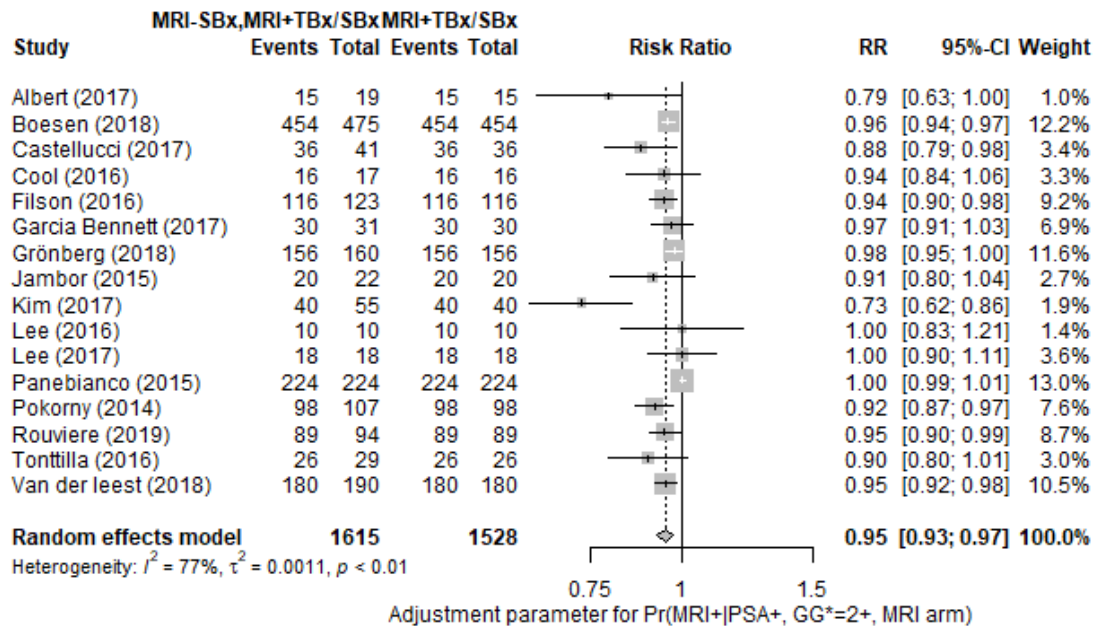
(2) $\Pr(\text{MRI+} \mid \text{PSA+}, \text{GG}=1, \text{Cochrane}) / \Pr(\text{MRI+} \mid \text{PSA+}, \text{GG}^*=1, \text{Cochrane})$

Adjustment parameter for $\Pr(\text{MRI+} \mid \text{PSA+}, \text{GG}^*=1, \text{MRI arm})$



(3) $\Pr(\text{MRI+} \mid \text{PSA+}, \text{GG}=2+, \text{Cochrane}) / \Pr(\text{MRI+} \mid \text{PSA+}, \text{GG}^*=2+, \text{Cochrane})$

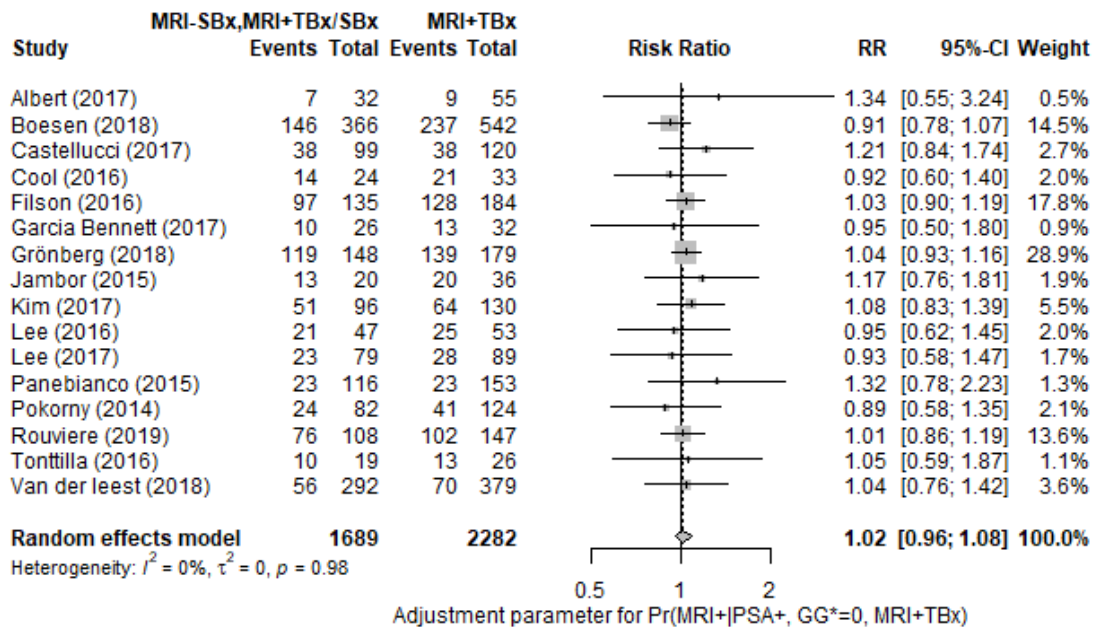
Adjustment parameter for $\Pr(\text{MRI+} \mid \text{PSA+}, \text{GG}^*=2+, \text{MRI arm})$



A2.2 Meta-analyses: Adjustment for probability of positive MRI results given positive PSA and disease stages under strategy PSA+MRI+TBx

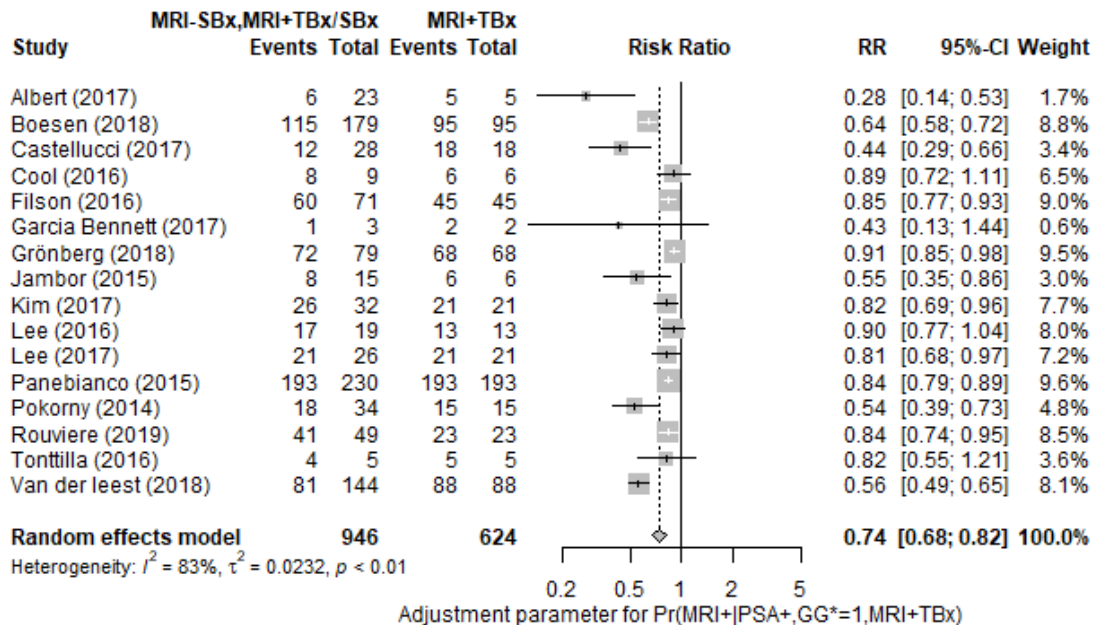
(4) Pr(MRI+ | PSA+, GG=0, Cochrane) / Pr(MRI+ | PSA+, GG*=0, Cochrane)

Adjustment parameter for Pr(MRI+|PSA+, GG*=0, MRI+TBx)



(5) Pr(MRI+ | PSA+, GG=1, Cochrane) / Pr(MRI+ | PSA+, GG*=1, Cochrane)

Adjustment parameter for Pr(MRI+|PSA+,GG*=1,MRI+TBx)



(6) $\Pr(\text{MRI+} \mid \text{PSA+}, \text{GG}=2+, \text{Cochrane}) / \Pr(\text{MRI+} \mid \text{PSA+}, \text{GG}^*=2+, \text{Cochrane})$

Adjustment parameter for $\Pr(\text{MRI+} \mid \text{PSA+}, \text{GG}^*=2+, \text{MRI+TBx})$

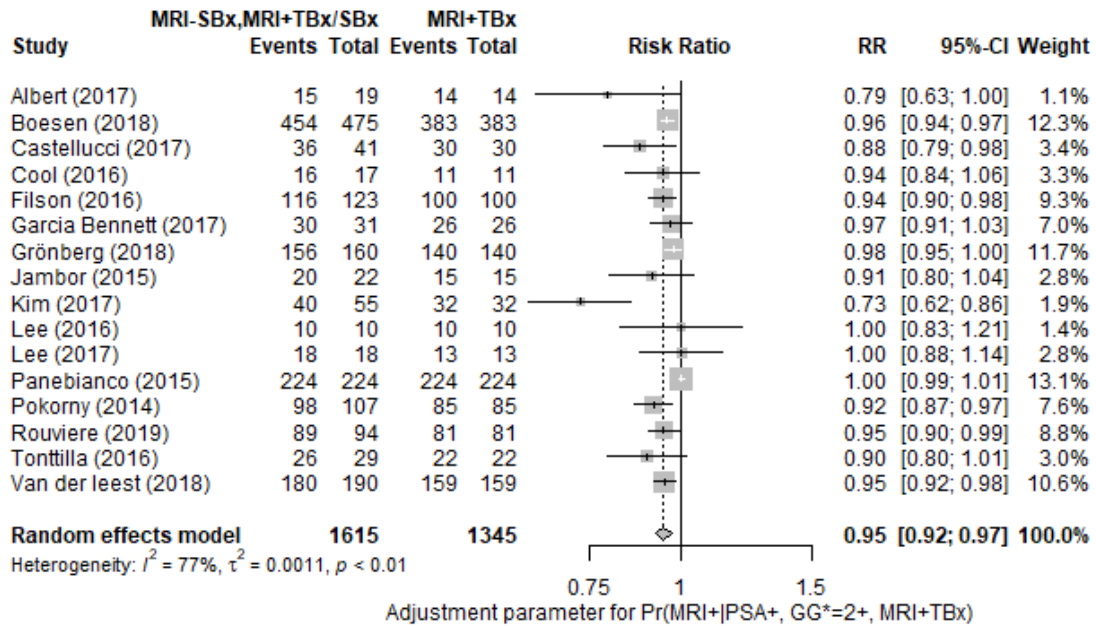


Table S2 Relative positive fractions: S3M+MRI+TBx/SBx using different reflex and S3M test thresholds vs. PSA+MRI+TBx/SBx, MRI-S3M \geq 25% (per protocol, conditioning on MRI results)

	ISUP GG=0 (PSA \geq 3 and MRI+) or (PSA \geq 3 and MRI- and S3M \geq 25%)		ISUP GG=1 (PSA \geq 3 and MRI+) or (PSA \geq 3 and MRI- and S3M \geq 25%)		ISUP GG\geq2 (PSA \geq 3 and MRI+) or (PSA \geq 3 and MRI- and S3M \geq 25%)	
	NOT ()	NOT ()	NOT ()	NOT ()	NOT ()	NOT ()
PSA \geq 3+ and MRI+	77	0	35	0	177	0
NOT ()	23	0	5	0	6	0
RPF	1.299		1.143		1.034	
95% CI	(1.167, 1.446)		(1.017, 1.285)		(1.007, 1.062)	
p-value	0.000		0.074		0.041	
	ISUP GG=0 (PSA \geq 1.5 and S3M \geq 15% and MRI+) or (PSA \geq 1.5 and MRI- and S3M \geq 25%)		ISUP GG=1 (PSA \geq 1.5 and S3M \geq 15% and MRI+) or (PSA \geq 1.5 and MRI- and S3M \geq 25%)		ISUP GG\geq2 (PSA \geq 1.5 and S3M \geq 15% and MRI+) or (PSA \geq 1.5 and MRI- and S3M \geq 25%)	
	NOT ()	NOT ()	NOT ()	NOT ()	NOT ()	NOT ()
PSA \geq 3+ and MRI+	27	50	16	19	145	32
NOT ()	53	17	17	7	39	22
RPF	1.039		0.943		1.04	
95% CI	(0.806, 1.339)		(0.667, 1.333)		(0.949, 1.139)	
p-value	0.844		0.868		0.476	
	ISUP GG=0 (PSA \geq 2 and S3M \geq 15% and MRI+) or (PSA \geq 2 and MRI- and S3M \geq 25%)		ISUP GG=1 (PSA \geq 2 and S3M \geq 15% and MRI+) or (PSA \geq 2 and MRI- and S3M \geq 25%)		ISUP GG\geq2 (PSA \geq 2 and S3M \geq 15% and MRI+) or (PSA \geq 2 and MRI- and S3M \geq 25%)	
	NOT ()	NOT ()	NOT ()	NOT ()	NOT ()	NOT ()
PSA \geq 3+ and MRI+	27	50	16	19	145	32
NOT ()	43	12	14	3	29	13
RPF	0.909		0.857		0.983	
95% CI	(0.703, 1.176)		(0.606, 1.213)		(0.901, 1.073)	
p-value	0.543		0.486		0.798	

CI: Confidence Interval; GG: Grade Group; ISUP: International Society of Urological Pathology; MRI: Magnetic Resonance Imaging; PSA: Prostate-Specific Antigen; RPF: Relative Positive Fraction; SBx: Systematic Biopsy; S3M: Stockholm3 test; TBx: Targeted Biopsy; TBx/SBx: Combined Targeted and Systematic Biopsy

Table S3 Relative positive fractions: S3M+MRI+TBx/SBx using different reflex and S3M test thresholds vs. PSA+MRI+TBx/SBx

	ISUP GG=0		ISUP GG=1		ISUP GG≥2	
	PSA≥1.5, S3M≥15%	PSA≥1.5, S3M<15%	PSA≥1.5, S3M≥15%	PSA≥1.5, S3M<15%	PSA≥1.5, S3M≥15%	PSA≥1.5, S3M<15%
PSA≥3	27	50	16	19	145	32
PSA<3	19	17	10	7	31	22
RPF	0.597		0.743		0.994	
95% CI	(0.454, 0.785)		(0.524, 1.054)		(0.91, 1.086)	
p-value	0.000		0.137		1	
	ISUP GG=0		ISUP GG=1		ISUP GG≥2	
	PSA≥2, S3M≥15%	PSA≥2, S3M<15%	PSA≥2, S3M≥15%	PSA≥2, S3M<15%	PSA≥2, S3M≥15%	PSA≥2, S3M<15%
PSA≥3	27	50	16	19	145	32
PSA<3	11	12	8	3	22	13
RPF	0.494		0.686		0.944	
95% CI	(0.372, 0.655)		(0.483, 0.974)		(0.868, 1.026)	
p-value	0.000		0.054		0.221	
	ISUP GG=0		ISUP GG=1		ISUP GG≥2	
	PSA≥2, S3M≥11%	PSA≥2, S3M<11%	PSA≥2, S3M≥11%	PSA≥2, S3M<11%	PSA≥2, S3M≥11%	PSA≥2, S3M<11%
PSA≥3	47	30	24	11	158	19
PSA<3	33	0	11	0	35	0
RPF	0.909		1		1.09	
95% CI	(0.749, 1.104)		(0.769, 1.3)		(1.009, 1.179)	
p-value	0.41		1		0.041	
	ISUP GG=0		ISUP GG=1		ISUP GG≥2	
	PSA≥2.5, S3M≥11%	PSA≥2.5, S3M<11%	PSA≥2.5, S3M≥11%	PSA≥2.5, S3M<11%	PSA≥2.5, S3M≥11%	PSA≥2.5, S3M<11%
PSA≥3	47	30	24	11	158	19
PSA<3	11	0	3	0	20	0
RPF	0.753		0.771		1.006	
95% CI	(0.624, 0.909)		(0.608, 0.979)		(0.939, 1.077)	
p-value	0.005		0.061		1.000	
	ISUP GG=0		ISUP GG=1		ISUP GG≥2	
	PSA≥2.5, S3M≥15%	PSA≥2.5, S3M<15%	PSA≥2.5, S3M≥15%	PSA≥2.5, S3M<15%	PSA≥2.5, S3M≥15%	PSA≥2.5, S3M<15%
PSA≥3	27	50	16	19	145	32
PSA<3	7	4	2	1	15	5
RPF	0.442		0.514		0.904	
95% CI	(0.331, 0.59)		(0.360, 0.736)		(0.835, 0.979)	
p-value	0.00		0.000		0.020	

CI: Confidence Interval; GG: Grade Group; ISUP: International Society of Urological Pathology; MRI: Magnetic Resonance Imaging; PSA: Prostate-Specific Antigen; RFP: Relative Positive Fraction; SBx: Systematic Biopsy; S3M: Stockholm3 test; TBx: Targeted Biopsy; TBx/SBx: Combined Targeted and Systematic Biopsy

Table S4 Summary of test characteristics and adjustment parameters for base case and one-way sensitivity analysis

No.	Test characteristics	Value	95% CI	Adjustment	Value (after adjustment)	95% CI (after adjustment)
Base case	Pr(MRI+ PSA+, GG=0, MRI+TBx/SBx)	0.129	(0.103, 0.158)	1.146	0.148	(0.126, 0.192)
Base case	Pr(MRI+ PSA+, GG=1, MRI+TBx/SBx)	1		0.743	0.743	(0.676, 0.816)
Base case	Pr(MRI+ PSA+, GG≥2, MRI+TBx/SBx)	1		0.948	0.948	(0.925, 0.971)
Base case	Pr(MRI+ PSA≥1.5, S3M≥15%, GG=0, MRI+TBx/SBx)	0.145	(0.108, 0.188)	1.152	0.167	(0.124, 0.224)
Base case	Pr(MRI+ PSA≥1.5, S3M≥15%, GG=1, MRI+TBx/SBx)	1		0.960	0.960	(0.796, 0.999)
Base case	Pr(MRI+ PSA≥1.5, S3M≥15%, GG≥2, MRI+TBx/SBx)	1		0.960	0.960	(0.900, 0.989)
Base case	Pr(MRI+ PSA≥2, S3M≥15%, GG=0, MRI+TBx/SBx)	0.142	(0.103, 0.190)	1.152	0.164	(0.119, 0.226)
Base case	Pr(MRI+ PSA≥2, S3M≥15%, GG=1, MRI+TBx/SBx)	1		0.960	0.960	(0.796, 0.999)
Base case	Pr(MRI+ PSA≥2, S3M≥15%, GG≥2, MRI+TBx/SBx)	1		0.959	0.959	(0.899, 0.989)
One-way i): S3M≥11%	Pr(MRI+ PSA≥2, S3M≥11%, GG=0, MRI+TBx/SBx)	0.133	(0.105, 0.165)	1.122	0.149	(0.117, 0.190)
One-way i): S3M≥11%	Pr(MRI+ PSA≥2, S3M≥11%, GG=1, MRI+TBx/SBx)	1		0.968	0.968	(0.833, 0.999)
One-way i): S3M≥11%	Pr(MRI+ PSA≥2, S3M≥11%, GG≥2, MRI+TBx/SBx)	1		0.962	0.962	(0.905, 0.990)
One-way ii): PSA≥2.5	Pr(MRI+ PSA≥2.5, S3M≥11%, GG=0, MRI+TBx/SBx)	0.144	(0.111, 0.182)	1.122	0.161	(0.124, 0.209)
One-way ii): PSA≥2.5	Pr(MRI+ PSA≥2.5, S3M≥11%, GG=1, MRI+TBx/SBx)	1		0.968	0.968	(0.833, 0.999)
One-way ii): PSA≥2.5	Pr(MRI+ PSA≥2.5, S3M≥11%, GG≥2, MRI+TBx/SBx)	1		0.961	0.961	(0.904, 0.989)
One-way ii): PSA≥2.5	Pr(MRI+ PSA≥2.5, S3M≥15%, GG=0, MRI+TBx/SBx)	0.150	(0.106, 0.204)	1.152	0.173	(0.124, 0.242)
One-way ii): PSA≥2.5	Pr(MRI+ PSA≥2.5, S3M≥15%, GG=1, MRI+TBx/SBx)	1		0.960	0.960	(0.833, 0.999)
One-way ii): PSA≥2.5	Pr(MRI+ PSA≥2.5, S3M≥15%, GG≥2, MRI+TBx/SBx)	1		0.958	0.958	(0.904, 0.989)
One-way iii): MRI+TBx	Pr(MRI+ PSA+, GG=0, MRI+TBx)	0.172	(0.143, 0.203)	1.017	0.175	(0.110, 0.454)
One-way iii): MRI+TBx	Pr(MRI+ PSA+, GG=1, MRI+TBx)	1		0.743	0.743	(0.676, 0.816)
One-way iii): MRI+TBx	Pr(MRI+ PSA+, GG≥2, MRI+TBx)	1		0.948	0.948	(0.925, 0.971)
One-way iii): MRI+TBx	Pr(MRI+ PSA≥1.5, S3M≥15%, GG=0, MRI+TBx)	0.200	(0.159, 0.247)	1.118	0.224	(0.110, 0.454)
One-way iii): MRI+TBx	Pr(MRI+ PSA≥1.5, S3M≥15%, GG=1, MRI+TBx)	1		0.960	0.960	(0.796, 0.999)
One-way iii): MRI+TBx	Pr(MRI+ PSA≥1.5, S3M≥15%, GG≥2, MRI+TBx)	1		0.960	0.960	(0.899, 0.989)
One-way iii): MRI+TBx	Pr(MRI+ PSA≥2, S3M≥15%, GG=0, MRI+TBx)	0.199	(0.155, 0.250)	1.118	0.223	(0.109, 0.456)
One-way iii): MRI+TBx	Pr(MRI+ PSA≥2, S3M≥15%, GG=1, MRI+TBx)	1		0.960	0.960	(0.796, 0.999)
One-way iii): MRI+TBx	Pr(MRI+ PSA≥2, S3M≥15%, GG≥2, MRI+TBx)	1		0.959	0.959	(0.898, 0.989)
One-way iv): ITT	Pr(MRI+ PSA+, GG=0, MRI+TBx/SBx)	0.131	(0.105, 0.161)	1.146	0.150	(0.129, 0.195)
One-way iv): ITT	Pr(MRI+ PSA+, GG=1, MRI+TBx/SBx)	1		0.743	0.743	(0.676, 0.816)
One-way iv): ITT	Pr(MRI+ PSA+, GG≥2, MRI+TBx/SBx)	1		0.948	0.948	(0.925, 0.971)
One-way iv): ITT	Pr(MRI+ PSA≥1.5, S3M≥15%, GG=0, MRI+TBx/SBx)	0.152	(0.114, 0.196)	1.152	0.175	(0.131, 0.233)
One-way iv): ITT	Pr(MRI+ PSA≥1.5, S3M≥15%, GG=1, MRI+TBx/SBx)	1		0.960	0.960	(0.796, 0.999)
One-way iv): ITT	Pr(MRI+ PSA≥1.5, S3M≥15%, GG≥2, MRI+TBx/SBx)	1		0.960	0.960	(0.899, 0.989)
One-way iv): ITT	Pr(MRI+ PSA≥2, S3M≥15%, GG=0, MRI+TBx/SBx)	0.151	(0.110, 0.199)	1.152	0.174	(0.127, 0.236)
One-way iv): ITT	Pr(MRI+ PSA≥2, S3M≥15%, GG=1, MRI+TBx/SBx)	1		0.960	0.960	(0.796, 0.999)
One-way iv): ITT	Pr(MRI+ PSA≥2, S3M≥15%, GG≥2, MRI+TBx/SBx)	1		0.959	0.959	(0.898, 0.989)

CI: Confidence Interval; GG: Grade Group; ISUP: International Society of Urological Pathology; ITT: Intention-to-Treat; MRI: Magnetic Resonance Imaging; PSA: Prostate-Specific Antigen; Pr: Probability; SBx: Systematic Biopsy; S3M: Stockholm3 test; TBx: Targeted Biopsy; TBx/SBx: Combined Targeted and Systematic Biopsy

Appendix B. Resource and costs characterization

B1 Methods

The input data for resources use and unit costs of used resources were extracted from multiple price lists of case in Stockholm Region, a report from the National Board of Health and Welfare (NBHW) and our previous study⁵⁻¹⁴. The duration of the lost production during to diagnosis, treatment, post treatment recovery and terminal care were collected from Heijnsdijk et al¹⁵. For long-term sick leave by patients with metastatic prostate cancer or patients under palliative therapy, the proportion under employment was 7.68% and the average days of sick leave was approximately 68 days in 2016¹⁴. The employment ratio for the general population in Sweden were 0.89, 0.779, 0.175 and 0 for age groups 45-54, 55-64, 65-74 and over 74 years, respectively in 2019¹⁶. The average monthly salary of general population in Sweden was €3,211 in 2019¹⁷, with an additional 37.00% for employer and social contributions¹⁸. All costs in Swedish kroner were first aligned to the calendar year 2019 by using the consumer price index¹⁹ and then converted to Euro 2019 price by the exchange rate (1 Euro = 10.5892 SEK) from the national bank²⁰.

B2 Results

Table S5 Resources and unit costs characterization (All costs are at 2019 price)

Module/Procedure	Unit cost (€)	Resource use	Costs (€)	Source	Lost production	Unit	Years of lost production	Source
Diagnosis								
PSA test at primary care								
GP visit	144	0.20	29	⁵⁻⁹				
PSA test analysis	6	1	6	¹²	2	Hour	2/24/365.25	¹⁵
Total costs			34		2	Hour	2/24/365.25	
S3M test at primary care								
GP visit	144	0.2	29	⁵⁻⁹				
PSA test analysis	6	1	6	¹²	2	Hour	2/24/365.25	¹⁵
S3M test analysis	217	1	217	A23 lab				
Total costs			251		2	Hour	2/24/365.25	
Biopsy at outpatient care: with MRI+TBx								
Specialist and nurse consultation	140	1	140	¹²				
Targeted biopsy	287	1	287	¹¹	2	Hour	2/24/365.25	¹⁵
MRI	336	1	336	¹²	2	Hour	2/24/365.25	Expert opinion
Pathology	407	1	407	¹²		-	-	
Nurse consultation	38	1	38	¹²		-	-	
Total costs			1 210		4	Hour	4/24/365.25	
Biopsy at outpatient care: with MRI+TBx/SBx								
Specialist and nurse consultation	140	1	140	¹²				
Systematic and targeted biopsy	434	1	434	¹¹	2	Hour	2/24/365.25	¹⁵
MRI	336	1	336	¹²	2	Hour	2/24/365.25	Expert opinion
Pathology	407	1	407	¹²		-	-	
Nurse consultation	38	1	38	¹²		-	-	
Total costs			1 357		4	Hour	4/24/365.25	
Treatment								
Active surveillance: with MRI+TBx								
Specialist and nurse consultation	140	1	140		2	Hour	2/24/365.25	¹⁵
PSA test sampling	34	3	103	⁹				
PSA test analysis	6	3	17	¹²	2*3	Hour	2*3/24/365.25	¹⁵
MRI	336	0.33	111	¹²	2*0.33	Hour	2*0.33/24/365.25	Expert opinion

Targeted biopsy	287	0.33	95	11	2*0.33	Hour	2*0.33/24/365.25	15
Pathology	407	0.33	134	12		-	-	
Total cost (Annual cost)			600		9.32	Hour	9.32/24/365.25	
Active surveillance: with MRI+TBx/SBx								
Specialist and nurse consultation	140	1	140		2	Hour	2/24/365.25	15
PSA test sampling	34	3	103	9	2*3	Hour	2*3/24/365.25	15
PSA test analysis	6	3	17	12				
MRI	336	0.33	111	12	2*0.33	Hour	2*0.33/24/365.25	Expert opinion
Systematic and targeted biopsy	434	0.33	143	11	2*0.33	Hour	2*0.33/24/365.25	15
Pathology	407	0.33	134	12		-	-	
Total cost (Annual cost)			648		9.32	Hour	9.32/24/365.25	
Radical prostatectomy: robot-assistant								
Robot assisted surgery	11 089	1	11 089	13				
Specialist and nurse consultation	140	1	140	12	6	Week	6/52	15
RT	12 115	0.25	3 029	13				
Total cost			14 258		6	Week	6/52	
Radiation therapy								
Oncologist consultation - new visit	375	1	375	8				
Oncologist consultation - further visit	162	1	162	8				
Nurse visit	38	20	769	12	8	Week	8/52	15
RT	606	20	12 115	13				
Hormone therapy-yearly	6 487	0.20	1 297	14				
Total cost			14 719		8	Week	8/52	
Metastatic: Hormone + chemo therapy								
Year drug cost/patient	6 880	1	6 880	14	67.52	Day	67.52/365.25	14
Total cost (Annual cost)			6 880		67.52	Day	67.52/365.25	
Metastatic: Hormone therapy								
Year drug cost/patient	6 487	1	6 487	14	67.52	Day	67.52/365.25	14
Total cost (Annual cost)			6 487		67.52	Day	67.52/365.25	
Post treatment follow-up								
Post treatment follow-up: first year								
Specialist and nurse consultation - Physical	140	1	140	12				
PSA test sampling	34	1	354	9	2	Hour	2/24/365.25	15
PSA test analysis	6	1	6	12				
Total cost (Annual cost)			180		2	Hour	2/24/365.25	

Post treatment follow-up: years following								
Specialist consultation - Tele follow-up	14	1	14	¹²				
PSA test sampling	34	1	34	⁹	2	Hour	2/24/365.25	¹⁵
PSA test analysis	6	1	6	¹²				
Total cost (Annual cost)			54		2	Hour	2/24/365.25	
Palliative therapy								
Yearly drug cost/patient	15 532	1	15 532	¹⁴	67.52	Day	67.52/365.25	¹⁴
Total cost (Annual cost)			15 532		67.52	Day	67.52/365.25	
Terminal illness								
Yearly drug cost/patient	7 766	1	7 766	¹⁴	6	Month	6/12	¹⁵
Total cost			7 766		6	Month	6/12	

GP: General Practitioner; MRI: Magnetic Resonance Imaging; PSA: Prostate-specific Antigen; RT: Radiation Therapy; SBx: Systematic Biopsy; S3M: Stockholm3 test; TBx: Targeted Biopsy; TBx/SBx: Combined Targeted and Systematic Biopsy

Appendix C Results of healthcare perspective for base case analysis and results of sensitivity analysis

Table S6 Summarised predictions in outcomes, costs and ICERs – Base case, healthcare perspective, 3% discounted

Part A. Lifetime predictions in outcomes and costs for all strategies				
Lifetime predictions	Strategy I No screening	Strategy II PSA3 +MRI+TBx/SBx	Strategy IV PSA2+ S3M11%+MRI+TBx	
Outcomes per 10 000 men				
MRI	0	33 789	33 590	
Biopsy	31 046	34 070	33 999	
Diagnosed PCa	16 542	17 226	17 312	
Diagnosed PCa – GG \geq 2	11 907	12 201	12 205	
Diagnosed PCa (age 55-69)	2 708	5 126	5 354	
Diagnosed PCa (age 55-69) – GG \geq 2	1 627	2 862	2 875	
Prostate cancer deaths	5 774	5 280	5 239	
LY, undiscounted	2 733 270	2 738 022	2 738 345	
QALYs, undiscounted	2 203 907	2 206 800	2 206 979	
QALYS, discounted at 3%	1 476 305	1 477 287	1 477 331	
QALYS, discounted at 5%	1 182 630	1 183 048	1 183 057	
Costs (€) per man				
Health sector, undiscounted	362.56	395.46	396,51	
Health sector, discounted at 3%	177.93	211.53	213,05	
Health sector, discounted at 5%	116.14	148.12	149,68	
Societal, undiscounted	371.30	411.75	413,37	
Societal, discounted at 3%	184.35	224.36	226,36	
Societal, discounted at 5%	121.46	159.22	161,21	
Part B. Incremental cost-effectiveness ratios (ICERs) – Healthcare perspective, 3% discounted for QALYs and costs				
Screening strategy	Costs (M€) Per 100,000 men	QALYs per 100,000 men	ICERs compared to	
			Lowest cost (No screening)	Next lowest cost
No screening	177.93	1 476 305	-	-
PSA2+S3M15%+MRI+TBx/SBx	209.92	1 477 260	33 479	33 479
PSA3+MRI+TBx/SBx	211.53	1 477 287	34 233	61 864
PSA1.5+S3M15%+MRI+TBx/SBx	215.69	1 477 288	38 413	2 650 410

GG: International Society of Urological Pathology Grade Group; ICER: Incremental Cost-Effectiveness Ratio; LY: Life years; MRI: Magnetic Resonance Imaging; PCa: Prostate Cancer; PSA: Prostate-Specific Antigen; S3M: Stockholm3 test; TBx: Targeted Biopsy; QALY: Quality-Adjusted-Life-Years

Table S7 Summarised predictions in outcomes, costs and ICERs – PSA \geq 2 ng/mL and S3M \geq 11%, MRI+TBx/SBx

Part A. Lifetime predictions in outcomes and costs for all strategies				
Lifetime predictions	Strategy I No screening	Strategy II PSA3 +MRI+TBx/SBx	Strategy IV PSA2+ S3M11%+MRI+TBx	
Outcomes per 10 000 men				
MRI	0	33 789	33 590	
Biopsy	31 046	34 070	33 999	
Diagnosed PCa	16 542	17 226	17 312	
Diagnosed PCa – GG \geq 2	11 907	12 201	12 205	
Diagnosed PCa (age 55-69)	2 708	5 126	5 354	
Diagnosed PCa (age 55-69) – GG \geq 2	1 627	2 862	2 875	
Prostate cancer deaths	5 774	5 280	5 239	
LY, undiscounted	2 733 270	2 738 022	2 738 345	
QALYs, undiscounted	2 203 907	2 206 800	2 206 979	
QALYS, discounted at 3%	1 476 305	1 477 287	1 477 331	
QALYS, discounted at 5%	1 182 630	1 183 048	1 183 057	
Costs (€) per man				
Health sector, undiscounted	362.56	395.46	396,51	
Health sector, discounted at 3%	177.93	211.53	213,05	
Health sector, discounted at 5%	116.14	148.12	149,68	
Societal, undiscounted	371.30	411.75	413,37	
Societal, discounted at 3%	184.35	224.36	226,36	
Societal, discounted at 5%	121.46	159.22	161,21	
Part B. Incremental cost-effectiveness ratios (ICERs) – Societal perspective, 3% discounted for QALYs and costs				
Screening strategy	Costs (M€) Per 100,000 men	QALYs per 100,000 men	ICERs compared to	
			Lowest cost (No screening)	Next lowest cost
No screening	184.35	1 476 305	-	-
PSA3+MRI+TBx/SBx	224.36	1 477 287	40 764	40 764
PSA2+S3M11%+MRI+TBx/SBx	226.36	1 477 331	40 941	44 823

GG: International Society of Urological Pathology Grade Group; ICER: Incremental Cost-Effectiveness Ratio; LY: Life years; MRI: Magnetic Resonance Imaging; PCa: Prostate Cancer; PSA: Prostate-Specific Antigen; S3M: Stockholm3 test; TBx: Targeted Biopsy; QALY: Quality-Adjusted-Life-Years

Table S8 Summarised predictions in outcomes, costs and ICERs – PSA \geq 2.5ng/mL and S3M \geq 15% and 11%

Lifetime predictions in outcomes and costs for all strategies				
Lifetime predictions	Strategy I No screening	Strategy II PSA3 +MRI+TBx/SBx	Strategy III PSA2.5+S3M15% +MRI+TBx/SBx	Strategy IV PSA2.5+S3M11% +MRI+TBx/SBx
Outcomes per 100,000 men				
MRI	0	33 789	11 748	21 681
Biopsy	31 046	34 070	31 117	32 481
Diagnosed PCa	16 542	17 226	16 879	17 033
Diagnosed PCa – GG \geq 2	11 907	12 201	12 136	12 197
Diagnosed PCa (age 55-69)	2 708	5 126	4 342	4 776
Diagnosed PCa (age 55-69) – GG \geq 2	1 627	2 862	2 714	2 858
Prostate cancer deaths	5 774	5 280	5 417	5 332
LY, undiscounted	2 733 270	2 738 022	2 737 024	2 737 677
QALYs, undiscounted	2 203 907	2 206 800	2 206 310	2 206 673
QALYS, discounted at 3%	1 476 305	1 477 287	1 477 203	1 477 293
QALYS, discounted at 5%	1 182 630	1 183 048	1 183 068	1 183 084
Costs (M€) per 100,000 man				
Health sector, undiscounted	362.56	395.46	390.83	397.59
Health sector, discounted at 3%	177.93	211.53	205.59	212.31
Health sector, discounted at 5%	116.14	148.12	142.19	148.48
Societal, undiscounted	371.30	411.75	405.04	412.94
Societal, discounted at 3%	184.35	224.36	216.69	224.35
Societal, discounted at 5%	121.46	159.22	151.74	158.88
Incremental cost-effectiveness ratios (ICERs) – Societal perspective, 3% discounted for QALYs and costs				
Strategy	Costs (M€) per 100,000 men	QALYs per 100,000 men	ICERs compared to	
			Lowest cost (No screening)	Next lowest cost
No screening	184.35	1 476 305	-	-
PSA2.5+S3M15%+MRI+TBx/SBx	216.69	1 477 203	35 997	35 997
PSA2.5+S3M11%+MRI+TBx/SBx	224.35	1 477 293	40 503	85 803
PSA3+MRI+TBx/SBx	224.36	1 477 287	40 764	SD

GG: International Society of Urological Pathology Grade Group; ICER: Incremental Cost-Effectiveness Ratio; LY: Life years; MRI: Magnetic Resonance Imaging; PCa: Prostate Cancer; PSA: Prostate-Specific Antigen; SBx: Systematic Biopsy; SD: Strongly Dominated; S3M: Stockholm3 test; TBx: Targeted Biopsy; QALY: Quality-Adjusted-Life-Years

Table S9 Summarised predictions in outcomes, costs and ICERs – MRI+TBx

Part A. Lifetime predictions in outcomes and costs for all strategies				
Lifetime predictions	Strategy I No screening	Strategy II PSA3 +MRI+TBx	Strategy III PSA1.5+ S3M15%+MRI+TBx	Strategy IV PSA2+ S3M15%+MRI+TBx
Outcomes per 10 000 men				
MRI	0	34 163	13 447	11 290
Biopsy	31 046	35 000	31 540	31 059
Diagnosed PCa	16 542	17 229	17 203	17 132
Diagnosed PCa – GG \geq 2	11 907	12 203	12 175	12 153
Diagnosed PCa (age 55-69)	2 708	5 135	5 150	5 004
Diagnosed PCa (age 55-69) – GG \geq 2	1 627	2 868	2 810	2 758
Prostate cancer deaths	5 774	5 279	5 268	5 293
LY, undiscounted	2 733 270	2 738 033	2 738 142	2 737 957
QALYs, undiscounted	2 203 907	2 206 801	2 206 913	2 206 824
QALYS, discounted at 3%	1 476 305	1 477 285	1 477 340	1 477 326
QALYS, discounted at 5%	1 182 630	1 183 046	1 183 082	1 183 087
Costs (€) per man				
Health sector, undiscounted	362.56	395.27	402.43	395.87
Health sector, discounted at 3%	177.93	211.40	217.42	211.68
Health sector, discounted at 5%	116.14	148.01	153.41	148.20
Societal, undiscounted	371.30	411.58	418.65	411.70
Societal, discounted at 3%	184.35	224.24	230.19	224.11
Societal, discounted at 5%	121.46	159.12	164.45	158.95
Part B. Incremental cost-effectiveness ratios (ICERs) – Societal perspective, 3% discounted for QALYs and costs				
Strategy	Costs (M€) per 100,000 men	QALYs per 100,000 men	ICERs compared to	
			Lowest cost (No screening)	Next lowest cost
No screening	184.35	1 476 305	-	-
PSA2+S3M15%+MRI+TBx	224.11	1 477 326	38 958	38 958
PSA3+MRI+TBx	224.24	1 477 285	40 721	SD
PSA1.5+S3M15%+MRI+TBx	230.19	1 477 340	44 313	108 413

GG: International Society of Urological Pathology Grade Group; ICER: Incremental Cost-Effectiveness Ratio; LY: Life years; MRI: Magnetic Resonance Imaging; PCa: Prostate Cancer; PSA: Prostate-Specific Antigen; SBx: Systematic Biopsy; SD: Strongly Dominated; S3M: Stockholm3 test; TBx: Targeted Biopsy; QALY: Quality-Adjusted-Life-Years

Table S10 Summarised predictions in outcomes, costs and ICERs – Test characteristics using ITT method

Part A. Lifetime predictions in outcomes and costs for all strategies				
Lifetime predictions	Strategy I No screening	Strategy II PSA3 +MRI+TBx/SBx, ITT	Strategy III PSA1.5+ S3M15%+MRI+TBx/SBx, ITT	Strategy IV PSA2+ S3M15%+MRI+TBx/SBx, ITT
Outcomes per 10 000 men				
MRI	0	33 818	21 631	18 782
Biopsy	31 046	34 140	32 707	32 229
Diagnosed PCa	16 542	17 226	17 054	16 991
Diagnosed PCa – GG≥2	11 907	12 201	12 193	12 160
Diagnosed PCa (age 55-69)	2 708	5 127	4 834	4 678
Diagnosed PCa (age 55-69) – GG≥2	1 627	2 863	2 852	2 777
Prostate cancer deaths	5 774	5 280	5 321	5 353
LY, undiscounted	2 733 270	2 738 023	2 737 766	2 737 520
QALYs, undiscounted	2 203 907	2 206 800	2 206 724	2 206 587
QALYS, discounted at 3%	1 476 305	1 477 286	1 477 306	1 477 273
QALYS, discounted at 5%	1 182 630	1 183 048	1 183 087	1 183 082
Costs (€) per man				
Health sector, undiscounted	362.56	395.54	405.34	398.68
Health sector, discounted at 3%	177.93	211.59	218.86	212.90
Health sector, discounted at 5%	116.14	148.18	154.36	148.92
Societal, undiscounted	371.30	411.83	420.81	413.72
Societal, discounted at 3%	184.35	224.43	231.01	224.69
Societal, discounted at 5%	121.46	159.28	164.85	159.08

Part B. Incremental cost-effectiveness ratios (ICERs) – Societal perspective, 3% discounted for QALYs and costs				
Strategy	Costs (M€) per 100,000 men	QALYs per 100,000 men	ICERs compared to	
			Lowest cost (No screening)	Next lowest cost
No screening	184.35	1 476 305	-	-
PSA3+MRI+TBx/SBx, ITT	224.43	1 477 286	40 839	40 839
PSA2+S3M15%+MRI+TBx/SBx, ITT	224.69	1 477 273	41 697	SD
PSA1.5+S3M15%+MRI+TBx/SBx, ITT	231.01	1 477 306	46 630	190 314

GG: International Society of Urological Pathology Grade Group; ICER: Incremental Cost-Effectiveness Ratio; ITT: Intention-To-Treat; LY: Life years; MRI: Magnetic Resonance Imaging; PCa: Prostate Cancer; PSA: Prostate-Specific Antigen; SD: Strongly Dominated; SBx: Systematic Biopsy; S3M: Stockholm3 test; TBx: Targeted Biopsy; QALY: Quality-Adjusted-Life-Years

Table S11 Summarised predictions in outcomes, costs and ICERs – Lower unit cost of S3M test (€94)

Lifetime predictions in outcomes and costs for all strategies				
Lifetime predictions	Strategy I No screening	Strategy II PSA3 +MRI+TBx/SBx	Strategy III PSA1.5+S3M15% +MRI+TBx/SBx, lower S3M	Strategy IV PSA2+S3M15% +MRI+TBx/SBx, lower S3M
Outcomes per 100,000 men				
MRI	0	33 789	16 226	13 439
Biopsy	31 046	34 070	31 632	31 162
Diagnosed PCa	16 542	17 226	17 011	16 957
Diagnosed PCa – GG≥2	11 907	12 201	12 186	12 156
Diagnosed PCa (age 55-69)	2 708	5 126	4 720	4 582
Diagnosed PCa (age 55-69) – GG≥2	1 627	2 862	2 835	2 764
Prostate cancer deaths	5 774	5 280	5 342	5 370
LY, undiscounted	2 733 270	2 738 022	2 737 605	2 737 393
QALYs, undiscounted	2 203 907	2 206 800	2 206 640	2 206 523
QALYS, discounted at 3%	1 476 305	1 477 287	1 477 288	1 477 260
QALYS, discounted at 5%	1 182 630	1 183 048	1 183 087	1 183 083
Costs (M€) per 100,000 man				
Health sector, undiscounted	362.56	395.46	391.70	387.71
Health sector, discounted at 3%	177.93	211.53	207.65	203.97
Health sector, discounted at 5%	116.14	148.12	144.48	141.10
Societal, undiscounted	371.30	411.75	406.88	402.51
Societal, discounted at 3%	184.35	224.36	219.55	215.57
Societal, discounted at 5%	121.46	159.22	154.76	151.10
Incremental cost-effectiveness ratios (ICERs) – Societal perspective, 3% discounted for QALYs and costs				
Strategy	Costs (M€) per 100,000 men	QALYs per 100,000 men	ICERs compared to	
			Lowest cost (No screening)	Next lowest cost
No screening	184.35	1 476 305	-	-
PSA2+S3M15%+MRI+TBx/SBx, lower S3M cost	215.57	1 477 260	32 671	32 671
PSA1.5+S3M15%+MRI+TBx/SBx, lower S3M cost	219.55	1 477 288	35 809	144 307
PSA3+MRI+TBx/SBx	224.36	1 477 287	40 764	SD

GG: International Society of Urological Pathology Grade Group; ICER: Incremental Cost-Effectiveness Ratio; ITT: Intention-To-Treat; LY: Life years; MRI: Magnetic Resonance Imaging; PCa: Prostate Cancer; PSA: Prostate-Specific Antigen; SBx: Systematic Biopsy; S3M: Stockholm3 test; TBx: Targeted Biopsy; QALY: Quality-Adjusted-Life-Years

Table S12 Summarised predictions in outcomes, costs and ICERs – Higher unit cost of S3M test (€283)

Lifetime predictions in outcomes and costs for all strategies				
Lifetime predictions	Strategy I No screening	Strategy II PSA3 +MRI+TBx/SBx	Strategy III PSA1.5+S3M15% +MRI+TBx/SBx, higher S3M	Strategy IV PSA2+S3M15% +MRI+TBx/SBx, higher S3M
Outcomes per 100,000 men				
MRI	0	33 789	16 226	13 439
Biopsy	31 046	34 070	31 632	31 162
Diagnosed PCa	16 542	17 226	17 011	16 957
Diagnosed PCa – GG≥2	11 907	12 201	12 186	12 156
Diagnosed PCa (age 55-69)	2 708	5 126	4 720	4 582
Diagnosed PCa (age 55-69) – GG≥2	1 627	2 862	2 835	2 764
Prostate cancer deaths	5 774	5 280	5 342	5 370
LY, undiscounted	2 733 270	2 738 022	2 737 605	2 737 393
QALYs, undiscounted	2 203 907	2 206 800	2 206 640	2 206 523
QALYS, discounted at 3%	1 476 305	1 477 287	1 477 288	1 477 260
QALYS, discounted at 5%	1 182 630	1 183 048	1 183 087	1 183 083
Costs (M€) per 100,000 man				
Health sector, undiscounted	362.56	395.46	407.13	399.25
Health sector, discounted at 3%	177.93	211.53	220.02	213.12
Health sector, discounted at 5%	116.14	148.12	155.30	149.03
Societal, undiscounted	371.30	411.75	422.31	414.06
Societal, discounted at 3%	184.35	224.36	231.93	224.71
Societal, discounted at 5%	121.46	159.22	165.58	159.03
Incremental cost-effectiveness ratios (ICERs) – Societal perspective, 3% discounted for QALYs and costs				
Strategy	Costs (M€) per 100,000 men	QALYs per 100,000 men	ICERs compared to	
			Lowest cost (No screening)	Next lowest cost
No screening	184,35	1 476 305	-	-
PSA3+MRI+TBx/SBx	224,36	1 477 287	40 764	40 764
PSA2+S3M15%+MRI+TBx/SBx, higher S3M cost	224,71	1 477 260	42 245	SD
PSA1.5+S3M15%+MRI+TBx/SBx, higher S3M cost	231,93	1 477 288	48 399	SD

GG: International Society of Urological Pathology Grade Group; ICER: Incremental Cost-Effectiveness Ratio; ITT: Intention-To-Treat; LY: Life years; MRI: Magnetic Resonance Imaging; PCa: Prostate Cancer; PSA: Prostate-Specific Antigen; SBx: Systematic Biopsy; S3M: Stockholm3 test; TBx: Targeted Biopsy; QALY: Quality-Adjusted-Life-Years

Table S13 Summarised predictions in outcomes, costs and ICERs – Background HSV using value sets for country A from WHO

Lifetime predictions in outcomes and costs for all strategies				
Lifetime predictions	Strategy I No screening	Strategy II PSA3 +MRI+TBx/SBx	Strategy III PSA1.5+S3M15% +MRI+TBx/SBx, higher S3M	Strategy IV PSA2+S3M15% +MRI+TBx/SBx, higher S3M
Outcomes per 100,000 men				
MRI	0	33 787	16 221	13 439
Biopsy	31 046	34 072	31 633	31 166
Diagnosed PCa	16 542	17 226	17 011	16 957
Diagnosed PCa – GG \geq 2	11 907	12 201	12 187	12 156
Diagnosed PCa (age 55-69)	2 708	5 127	4 717	4 579
Diagnosed PCa (age 55-69) – GG \geq 2	1 627	2 862	2 834	2 765
Prostate cancer deaths	5 774	5 279	5 342	5 370
LY, undiscounted	2 733 270	2 738 021	2 737 601	2 737 389
QALYs, undiscounted	2 119 287	2 121 719	2 121 601	2 121 506
QALYS, discounted at 3%	1 447 421	1 448 203	1 448 221	1 448 202
QALYS, discounted at 5%	1 172 673	1 172 973	1 173 020	1 173 021
Costs (M€) per 100,000 man				
Health sector. undiscounted	362.56	395.45	401.68	395.19
Health sector. discounted at 3%	177.93	211.53	215.66	209.90
Health sector. discounted at 5%	116.14	148.12	151.49	146.24
Societal. undiscounted	371.30	411.74	416.85	409.99
Societal. discounted at 3%	184.35	224.36	227.56	221.49
Societal. discounted at 5%	121.46	159.22	161.76	156.23

Incremental cost-effectiveness ratios (ICERs) – Societal perspective. 3% discounted for QALYs and costs				
Strategy	Costs (M€) per 100.000 men	QALYs per 100.000 men	ICERs compared to	
			Lowest cost (No screening)	Next lowest cost
No screening	184,35	1 447 421	-	-
PSA2+S3M15%+MRI+TBx/SBx, WHO HSV	221,49	1 448 202	47 579	47 579
PSA3+MRI+TBx/SBx, WHO HSV	224,36	1 448 203	51 161	2 024 168
PSA1.5+S3M15%+MRI+TBx/SBx, WHO HSV	227,56	1 448 221	54 023	179 274

GG: International Society of Urological Pathology Grade Group; ICER: Incremental Cost-Effectiveness Ratio; ITT: Intention-To-Treat; LY: Life years; MRI: Magnetic Resonance Imaging; PCa: Prostate Cancer; PSA: Prostate-Specific Antigen; SBx: Systematic Biopsy; S3M: Stockholm3 test; TBx: Targeted Biopsy; QALY: Quality-Adjusted-Life-Years

Table S14 Summarised predictions in outcomes, costs and ICERs – Discount rate 0% and 5%

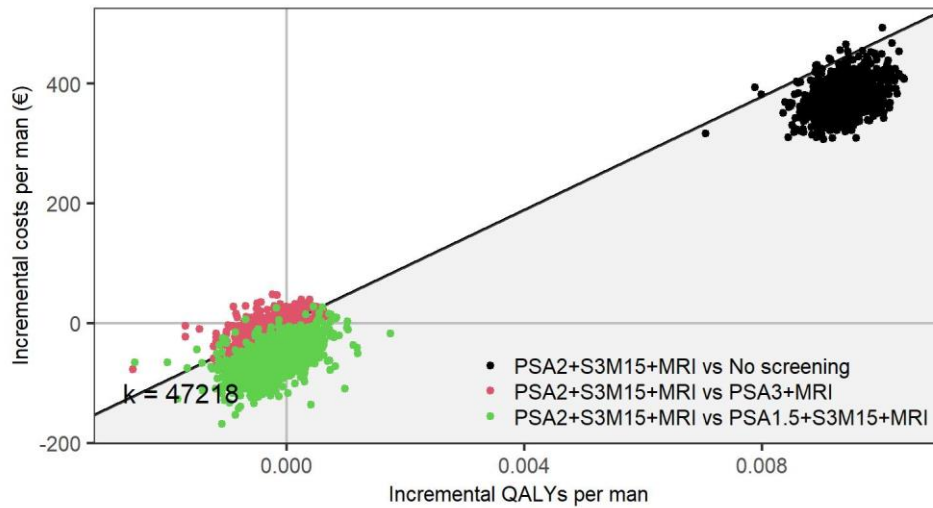
Incremental cost-effectiveness ratios (ICERs) – Societal perspective, no discount for QALYs and costs					
Strategy	Costs (M€) per 100,000 men	QALYs per 100,000 men	ICERs compared to		
			Lowest cost (No screening)	Next lowest cost	Relative alternative
No screening	371.30	2 203 907	-	-	-
PSA2+S3M15%+MRI+TBx/SBx	410.02	2 206 523	14 799	14 799	ED
PSA3+MRI+TBx/SBx	411.75	2 206 800	13 983	6 262	13 983
PSA1.5+S3M15%+MRI+TBx/SBx	416.91	2 206 640	16 690	SD	16 690

ICER: Incremental Cost-Effectiveness Ratio; ITT: Intention-To-Treat; LY: Life years; MRI: Magnetic Resonance Imaging; PCa: Prostate Cancer; PSA: Prostate-Specific Antigen; SBx: Systematic Biopsy; S3M: Stockholm3 test; TBx: Targeted Biopsy; QALY: Quality-Adjusted-Life-Years

Incremental cost-effectiveness ratios (ICERs) – Societal perspective, 3% discounted for QALYs and costs					
Strategy	Costs (M€) per 100,000 men	QALYs per 100,000 men	ICERs compared to		
			Lowest cost (No screening)	Next lowest cost	
No screening	121.46	1 182 630	-	-	-
PSA2+S3M15%+MRI+TBx/SBx	156.25	1 183 048	83 114		83 114
PSA3+MRI+TBx/SBx	159.22	1 183 083	83 316		85 755
PSA1.5+S3M15%+MRI+TBx/SBx	161.79	1 183 087	88 206		643 461

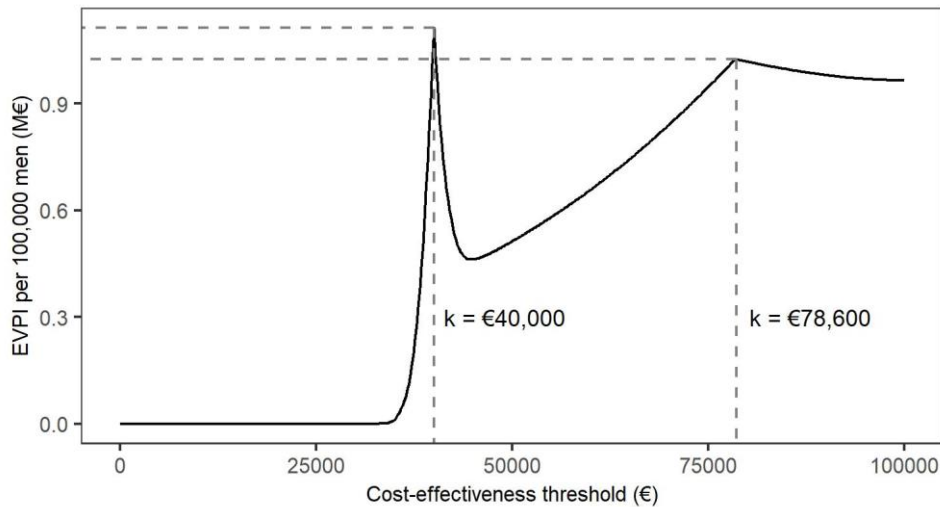
ICER: Incremental Cost-Effectiveness Ratio; ITT: Intention-To-Treat; LY: Life years; MRI: Magnetic Resonance Imaging; PCa: Prostate Cancer; PSA: Prostate-Specific Antigen; SBx: Systematic Biopsy; S3M: Stockholm3 test; TBx: Targeted Biopsy; QALY: Quality-Adjusted-Life-Years

Figure S2 Cost-effectiveness plane of the probabilistic sensitivity analysis



MRI: Magnetic Resonance Imaging; QALYs: Quality-Adjusted Life Years

Figure S3 Expected value of perfect information by cost-effectiveness threshold, societal perspective, 3% discounted



The EVPI firstly peaked at a cost-effectiveness threshold was €40,000 per QALY gained, where the optimal strategy changed from no screening to PSA2+S3M15+MRI on the cost-effectiveness acceptability curve (Figure 4). At a cost-effectiveness threshold of €47,218 per QALY gained, the PSA2+S3M15+MRI strategy was not expected to be cost-effective and the EVPI was close to €0.5M per 100,000 men. If the threshold is greater than €78,600 per QALY gained, the probability that PSA2+S3M15+MRI decreased to 50%. EVPI: Expected Value of Perfect Information; M: Million

References

1. Drost FH, Osses DF, Nieboer D, et al. Prostate MRI, with or without MRI-targeted biopsy, and systematic biopsy for detecting prostate cancer. *The Cochrane database of systematic reviews*. 2019;4:Cd012663.
2. Nordström T, Jäderling F, Carlsson S, Aly M, Grönberg H, Eklund M. Does a novel diagnostic pathway including blood-based risk prediction and MRI-targeted biopsies outperform prostate cancer screening using prostate-specific antigen and systematic prostate biopsies? - protocol of the randomised study STHLM3MRI. *BMJ Open*. 2019;9(6):e027816.
3. European Association of Urology. *Oncology guidelines prostate cancer*. Arnhem, The Netherlands: European Association of Urology;2019.
4. Hosseiny M, Raman SS. MRI-Guided In-Bore and MRI-Targeted US (Fusion) Biopsy. In: Tirkes T, ed. *Prostate MRI Essentials*. Springer, Cham; 2020:129-145.
5. Socialstyrelsen. Öppna jämförelser 2014 Hälso- och sjukvårdHälso- och sjukvård. Jämförelser mellan landsting. Del 1. Övergripande indikatorer. In:2014.
6. Socialstyrelsen. Öppna jämförelser 2015 Hälso- och sjukvård. Övergripande indikatorer. In:2015.
7. SödraRegionvårdsnämnden. Regionala priser och ersättningar för södra sjukvårdsregionen 2015. In:2015.
8. SödraRegionvårdsnämnden. Regionala priser och ersättningar för södra sjukvårdsregionen 2016. In:2016.
9. Socialstyrelsen. Screening för prostatacancer med PSA-prov. Hälsoekonomisk analys Bilaga. 2018. Published February 13, 2018. Accessed May 21, 2018.
10. SLL. *Avtal med Karolinska sjukhuset avseende tjänster inom klinisk laboratoriemedicin i sydöstra länet HSN 2018-0963*. Stockholm2018.
11. Rapporteringsanvisningar Urologi, specialiserad. 2019. <https://vardgivarguiden.se/administration/verksamhetsadministration/rapportera/rapporteringsanvisningar-a-urologi-specialiserad/>? Accessed 2019-11-29.
12. SLL. *Vårdval specialiserad urologi*. Aug. 1 2018.
13. Socialstyrelsen. *Hälsoekonomiskt underlag. Nationella riktlinjer för prostatacancer 2014*. 2014.
14. Hao S, Östensson E, Eklund M, et al. The economic burden of prostate cancer – a Swedish prevalence-based register study. *BMC Health Services Research*. 2020;20(1):448.
15. Heijnsdijk EA, de Carvalho TM, Auvinen A, et al. Cost-effectiveness of prostate cancer screening: a simulation study based on ERSPC data. *Journal of the National Cancer Institute*. 2015;107(1):366.
16. Population aged 15-74 (LFS) by sex, age and labour status. Year 1970 - 2019. 2020. http://www.statistikdatabasen.scb.se/pxweb/en/ssd/START__AM__AM0401__AM0401A/NAKUBefolkning2Ar/. Accessed 2020-12-02.
17. Salary structures, whole economy. SCB; 2020. http://www.statistikdatabasen.scb.se/pxweb/en/ssd/START__AM__AM0110__AM0110A/LonYrkeUtbildning4A/. Accessed 2020-12-02.
18. Carlgren F. Sociala avgifter över tid - Avtalade och lagstadgade avgifter - arbetare. ekonomifakta. <https://www.ekonomifakta.se/Fakta/Skatter/Skatt-pa-arbete/Sociala-avgifter-over-tid/>. Published 2020. Updated 2020-06-30. Accessed 2019-12-02.
19. SCB. CPI, Fixed Index Numbers (1980=100). SCB. <https://www.scb.se/en/finding-statistics/statistics-by-subject-area/prices-and-consumption/consumer-price-index/consumer-price-index-cpi/pong/tables-and-graphs/consumer-price-index-cpi/cpi-fixed-index-numbers-1980100/>. Published 2020. Updated 2020-11-12. Accessed 2020-12-02, 2020.
20. Annual average exchange rates. Swedish National Bank; 2020. <https://www.riksbank.se/en-gb/statistics/search-interest--exchange-rates/annual-average-exchange-rates/>. Accessed 2020-12-02.