

# 1 Forecasting sub-national trends in COVID-19 vaccine uptake in the UK

2  
3 A. de Figueiredo<sup>1,2</sup>

4  
5 <sup>1</sup> Department of Infectious Disease Epidemiology, London School of Hygiene and Tropical Medicine, London,  
6 UK.

7 <sup>2</sup> Department of Mathematics, Imperial College London, UK.

8  
9 [alex.defigueiredo@lshtm.ac.uk](mailto:alex.defigueiredo@lshtm.ac.uk)

10  
11  
12 The rollout of COVID-19 vaccines has begun to at-risk populations around the world. It is currently  
13 unclear whether rejection of the vaccine will pose challenges for achieving herd/community immunity  
14 either through large-scale rejection or localised pockets. Here we predict uptake of the vaccine at  
15 unprecedented spatial resolution across the UK using a large-scale survey of over 17,000 individuals.  
16 Although the majority of the UK population would likely take the vaccine, there is substantial  
17 heterogeneity in uptake intent across the UK. Large urban areas, including London and North West  
18 England, females, Black or Black British ethnicities, and Polish-speakers are among the least accepting.  
19 This study helps identify areas and socio-demographic groups where vaccination levels may not reach  
20 those levels required for herd immunity. Identifying clusters of non-vaccinators is extremely important  
21 in the context of achieving herd immunity as vaccination “cold-spots” can amplify epidemic spread and  
22 disproportionately increase vaccination levels required for herd protection.

## 23 24 25 Introduction

26 A vaccine against the novel coronavirus 2019 disease (COVID-19) caused by the severe acute  
27 respiratory coronavirus 2 (SARS-CoV-2) will be a major step in reducing mortality, morbidity,  
28 economic, and societal burdens associated with the COVID-19 pandemic. The UK’s National Health  
29 Service (NHS) has begun the rollout of two vaccines approved by the Medicines and Healthcare products  
30 Regulatory Authority (MHRA)<sup>1</sup> and has administered almost 4 million doses (week ending 17 January  
31 2021).

32 A successful vaccination campaign of a safe and effective COVID-19 vaccine is contingent on several  
33 factors: at-scale manufacture ensuring sufficient dosages to target populations; governments and health  
34 organisations ensuring fast and equitable distribution via existing and novel supply-chain networks with  
35 sufficient capacity for storage and delivery; and public acceptance. This latter factor is perhaps of  
36 particular concern in the UK, which has had notable hesitancy towards vaccinating in the past<sup>2</sup>, and has  
37 had widely circulating false stories about a COVID-19 vaccine<sup>3–5</sup>. Over the past three years, there have  
38 been year-on-year decreases in uptake of routine immunisations – such as the MMR vaccine<sup>6</sup> – with  
39 corresponding outbreaks of vaccine-preventable diseases (and a loss of the UK’s measles-free status).<sup>7–</sup>  
40 <sup>10</sup>. UK policymakers may therefore face significant public concern over a novel vaccine.

41 Although recent studies show largely positive attitudes towards a COVID-19 vaccine across the UK<sup>11,12</sup>,  
42 no study has – to date – investigated sub-national acceptance and whether specific regions may fail to  
43 meet the required vaccination levels for herd immunity (estimated at around 65% for the UK<sup>13</sup>). Vaccine  
44 delays and refusals not only place individuals directly at risk but can contribute to lowering vaccination  
45 thresholds required for herd immunity. Geographic clustering of non-vaccinators can be particularly  
46 troublesome, as these “cold spots” can disproportionately increase required vaccination levels for herd  
47 immunity in adjacent settings, as they serve as infection hubs amplifying the spread of disease<sup>14,15</sup>. It is

48 therefore important to identify the regions – and the socio-demographic groups – at risk of vaccine  
49 refusal or delay.

50 In this large-scale modelling study, intent to accept a COVID-19 vaccine is estimated for 174 sub-  
51 national regions across the UK using survey data from over 16,820 individuals. Multilevel regression  
52 and poststratification (MRP) – a statistical method recently used to successfully predict national general  
53 election results in the UK<sup>16</sup> – is used to obtain these sub-national estimates and to identify the socio-  
54 demographic barriers of intent to accept a COVID-19 vaccine. Partial validation for this modelling  
55 approach is obtained via uptake rates among over 70s across England from the start of vaccine rollout  
56 to 18 February 2021.

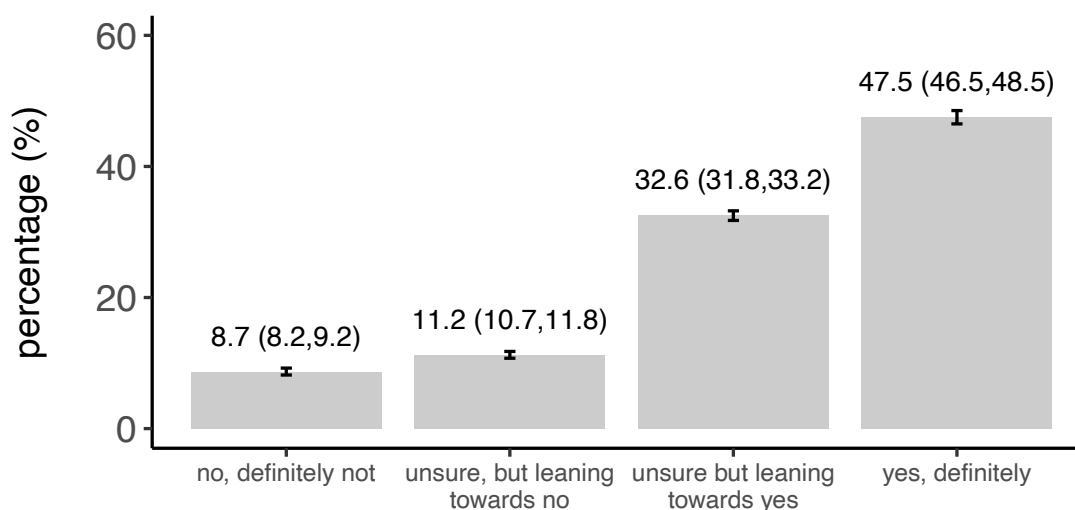
57 This study aims to provide policymakers with estimates for COVID-19 uptake rates among the UK adult  
58 population and to establish socio-demographic groups at high risk of vaccine refusal and to highlight  
59 regions that may pose challenges for reaching herd immunity across the UK.

60

61  
62  
63

### Would you accept a COVID–19 vaccine?

UK-wide MRP estimates, n=16820



64  
65  
66  
67  
68  
69  
70

**Fig. 1. National-level estimates of COVID-19 vaccine uptake intent.** National-level estimates for the percentage of the UK that would: “definitely not” accept a COVID-19 vaccine, “definitely” accept a COVID-19 vaccine, or who are unsure. Uncertainty in estimates are 95% HPD intervals.

71  
72

73

Survey question	Values (recodes, including to align with UK census in parenthesis)	Regression baseline
<b>Response: COVID-19 vaccination intent</b>		
If a new coronavirus (COVID-19) vaccine became available, would you accept the vaccine for yourself?	yes, definitely; unsure, but leaning towards yes; unsure but leaning towards no no, definitely not	n/a (response variable)
<b>Covariates: socio-demographic factors</b>		
sex	male and female	male
age	integer value mapped to 18-24, 25-34, 35-44, 45-54, 55-64, 65-79, 80+	18-24
highest educational attainment	No academic qualifications (none/other) 0-4 GCSE, O-levels, or equivalents (level 1-3) 5+ GCSE, O-levels, 1 A level, or equivalents (level 1-3) 2+ A levels or equivalents (level 1-3) Undergraduate or postgraduate degree or other professional qualification (level 4) Apprenticeship (none/other) Other (e.g., vocational, foreign qualifications) (none/other) Do not know (none/other) Do not wish to answer (none/other)	level 1-3
religious affiliation	atheist/agnostic Christian Buddhist (other religion) Hindu Muslim other religion do not wish to answer (not given)	atheist / agnostic
work status	working full-time (including self-employed) part-time (including self-employed) unemployed student looking after the home retired (retired / disabled) unable to work (e.g., short- or long-term disability) (retired / disabled) do not wish to answer (other work status)	full-time
ethnicity	White: English/Welsh/Scottish/Northern Irish/British (White) White: Irish (White) White: Other white background (White) White and Black Caribbean (mixed) White and Black African (mixed) White and Asian or White and Asian British (mixed) Black, African, Caribbean or Black British (Black/Black British) Asian or Asian British: Indian (Asian/Asian British) Asian or Asian British: Pakistani (Asian/Asian British) Asian or Asian British: Chinese (Asian/Asian British) Asian or Asian British: Other (Asian/Asian British) other ethnicity (other ethnicity) do not wish to answer (other ethnicity)	White
language	English or Welsh Polish Punjabi (other language) Urdu (other language) Bengali (other language) Other (other language) do not wish to answer (other language)	English or Welsh

74

75

76

77

78 **Table 1. Study data** Survey items are shown with the responses (including recodes, if any), and baselines used in the ordinal  
79 logistic regressions. COVID-19 vaccination intent is the study response variable.

80

81

82

83

84

## 85 **Results**

### 86 **Data collection**

87 Between 24 September and 14 October 2020, a cross-sectional online survey was administered to 17,684  
88 UK residents aged 18 and over. During data collection, quality control procedures resulted in the removal  
89 of 864 respondents (see *Methods*). All respondents were recruited via an online panel by ORB (Gallup)  
90 International ([www.orb-international.com](http://www.orb-international.com)) and informed consent was obtained before respondents  
91 participated. The questionnaire is provided in the Supplementary Materials.

92  
93 Respondents are asked whether they would accept a COVID-19 vaccine: “*If a new coronavirus (COVID-  
94 19) vaccine became available, would you accept the vaccine for yourself?*”. Respondents could provide  
95 one of four responses on an ordinal scale: “*yes, definitely*”, “*unsure, but leaning towards yes*”, “*unsure,  
96 but leaning towards no*”, or “*no, definitely not*”.

97  
98 Socio-demographic data was collected for each respondent to assess the relationship between these  
99 characteristics and vaccine intent and to allow for the reweighting of respondents’ vaccination intent  
100 according to census data (both via multilevel regression and poststratification, see below). These  
101 covariate data were therefore chosen to align with the socio-demographic data collected in the latest UK  
102 census. The covariate data collected for each individual was: sex, age, highest educational attainment,  
103 religious affiliation, ethnicity, employment status, primary language, and outer postcode. Respondent’s  
104 outer postcode was used to map respondents to one of 174 third level NUTS regions (NUTS3).  
105 Descriptions for all respondent data collected and recoding are provided in table 1.

### 106 107 **Multilevel regression and poststratification**

108 Multilevel regression and poststratification (MRP)<sup>16,17</sup> is used to estimate intent to accept a COVID-19  
109 vaccine across the 174 sub-national regions across the UK and to identify the socio-demographic barriers  
110 to uptake (see *Methods* for full model details).

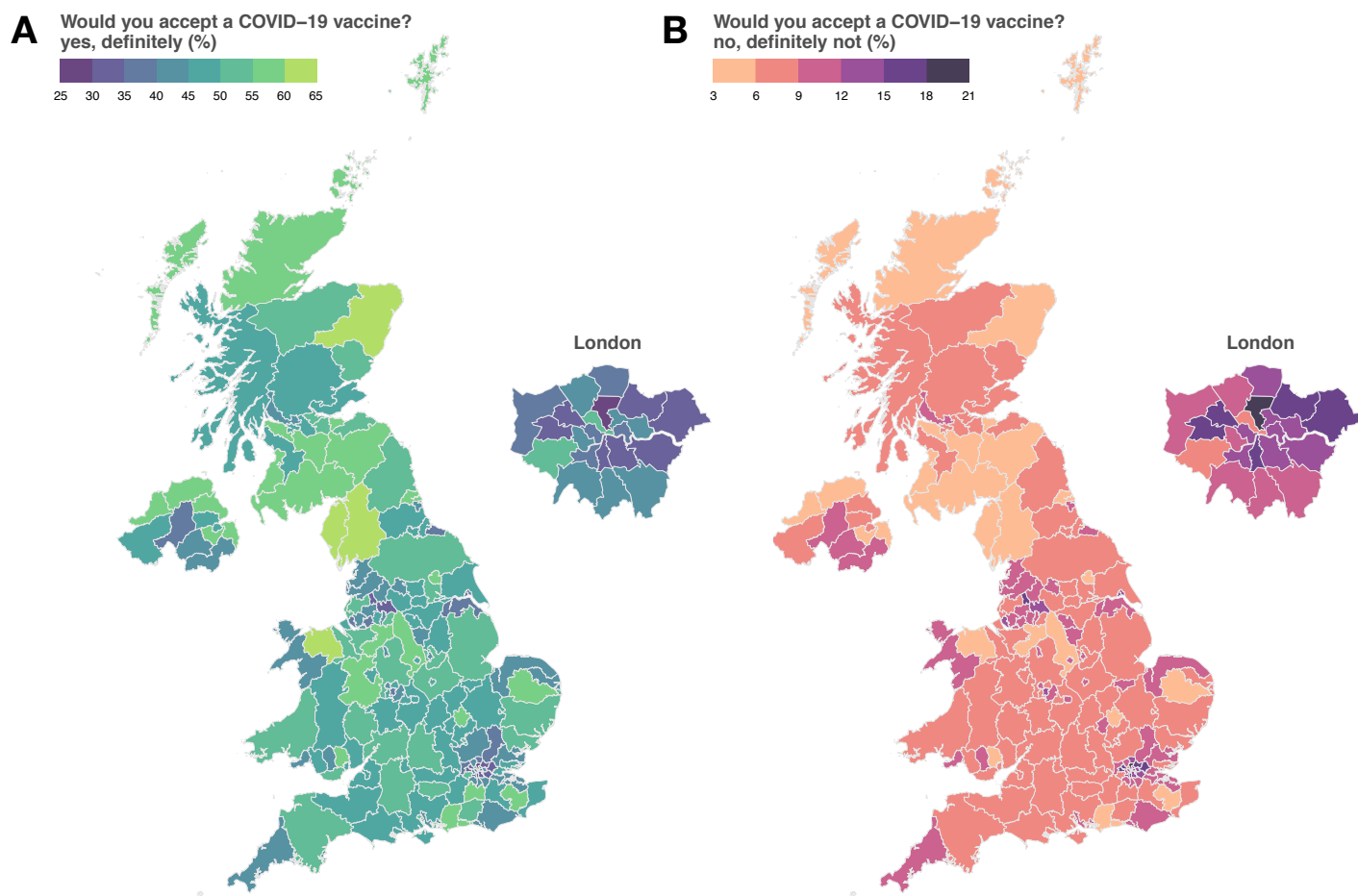
### 111 112 **COVID-19 vaccination intent**

113 Across the UK, just under half the population – 47.5% (95% highest posterior density interval (HPDI)  
114 46.5 to 48.5%) – would “definitely” take a COVID-19 vaccine according to the MRP-based estimates  
115 of uptake intent. A further 32.6% (31.8 to 33.2%) are leaning towards vaccinating but are unsure. 8.7%  
116 (8.2 to 9.2%) would “definitely not” take a COVID-19 vaccine and 11.2% (10.7 to 11.8%) are unsure  
117 but leaning towards no (fig 1).

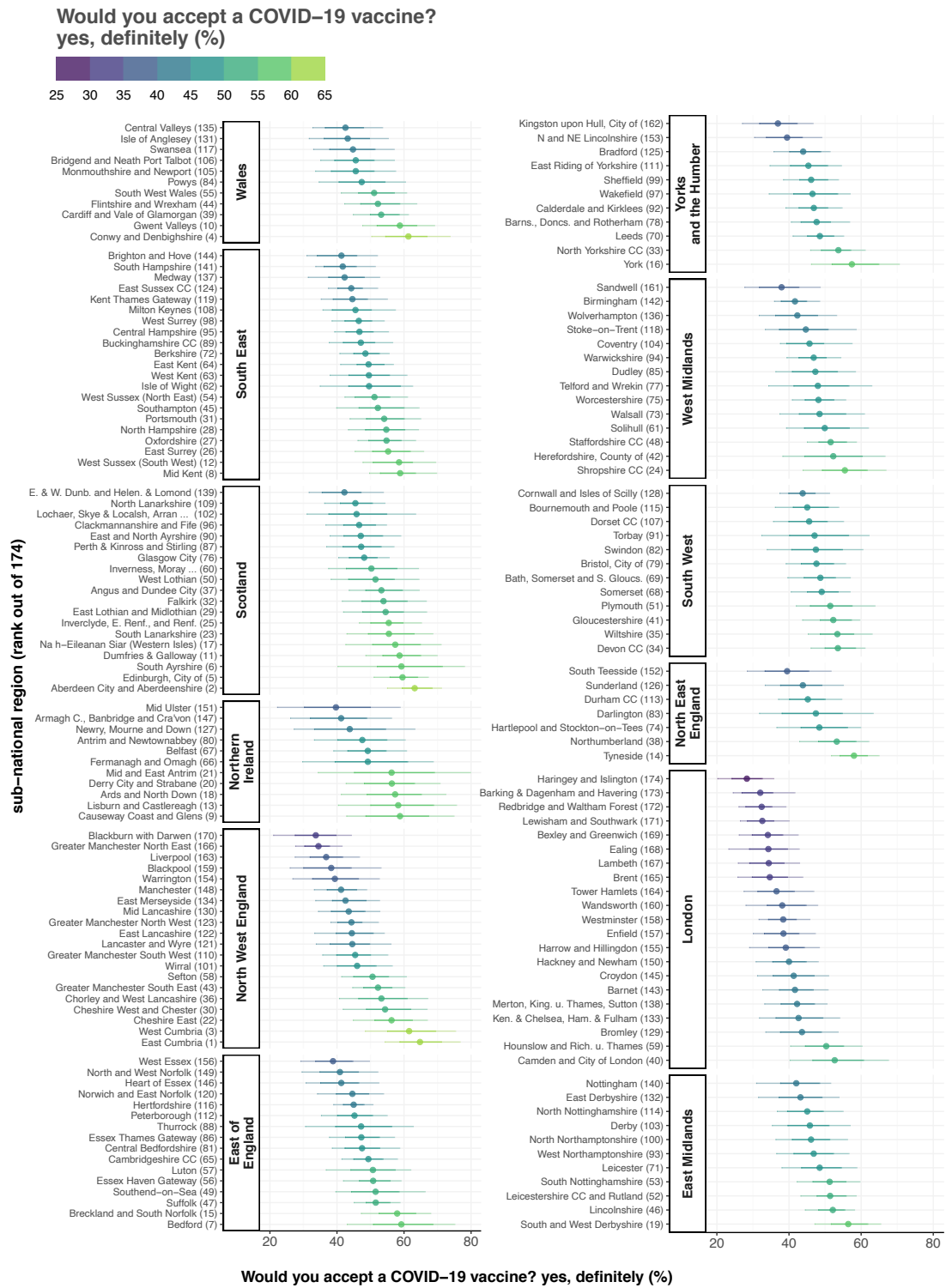
118  
119 Sub-national MRP estimates of the proportion of each of the UK’s 174 NUTS regions who would  
120 “definitely” accept a COVID-19 vaccine are mapped in figure 2A. Estimates of the proportions who  
121 would “definitely not” accept a COVID-19 vaccine are mapped in figure 2B. The values in figure 2A  
122 are repeated in figure 3 with their corresponding 70% and 95% HPDIs and are ranked from lowest to  
123 highest acceptance by broad UK region. (Raw values for the MRP estimates and HPDIs for each of the  
124 174 sub-national regions and each of the four outcome variable options are provided in the  
125 supplementary data file).

126  
127 Estimates across the 174 sub-national NUTS regions of the UK vary considerably. Estimates of the  
128 proportion of the public who would “definitely” accept a COVID-19 vaccine (figure 2A) range from  
129 28.3% (20.1 to 35.7%) in Haringey and Islington to 64.8% (54.2 to 76.6%) in East Cumbria (fig 2 and  
130 fig 3). The lowest proportions of the UK public who would “definitely” accept a COVID-19 vaccine are  
131 concentrated in London, which contains 13 of the 20 lowest proportions in the UK: Haringey and  
132 Islington (28.3%, 20.1 to 35.7%); Barking, and Dagenham and Havering (32.0%, 24.4 to 41.5%);  
133 Redbridge and Waltham Forest (32.4%, 26.0 to 39.1%); Lewisham and Southwark (32.6%, 26.4 to  
134 39.9%); Bexley and Greenwich (34.1%, 26.1 to 42.4%); Ealing (34.3%, 23.2% to 42.7%); Lambeth

135 (34.4%, 25.8 to 42.8%); Brent (34.7%, 25.7 to 43.7%); Tower Hamlets (36.5%, 27.4 to 46.8%);  
136 Wandsworth (38.1%, 28.0 to 47.9%); Westminster (38.4%, 31.6 to 45.7%); Enfield (38.5%, 30.0 to  
137 47.2%); and Harrow and Hillingdon (39.1%, 29.0 to 48.3%). Four of the remaining seven regions in the  
138 lowest 20 are in North West England: Blackburn with Darwen (33.7%, 21.0 to 44.2%), Greater  
139 Manchester North East (Bury, Oldham, and Rochdale) (34.5%, 27.5 to 41.4%), Liverpool (36.8%, 27.4  
140 to 46.6%), Blackpool (38.3%, 25.9 to 53.0%). The remaining three areas in the lowest 20 are West Essex  
141 (East of England, 38.8%, 29.1 to 49.6%), Sandwell (West Midlands, 37.9%, 27.6 to 48.6%), and the  
142 City of Kingston upon Hull (Yorkshire and the Humber, 36.9%, 27.0 to 46.6%). (See supplementary  
143 data file for all estimated values and posterior intervals.)  
144  
145  
146  
147



148  
149 **Fig. 2. Sub-national estimates of COVID-19 vaccine intent across the UK.** The estimated proportion of respondents in  
150 each of the UK's 174 NUTS3 region who would state they would “definitely” accept a COVID-19 (A) and who would  
151 “definitely not” accept a COVID-19 vaccine (B). Regional boundaries are used under the Open Government License v3.0  
152 (see [https://data.gov.uk/dataset/b147a160-86b6-48e4-8dd0-f35b90981814/nuts-level-3-january-2015-super-generalised-](https://data.gov.uk/dataset/b147a160-86b6-48e4-8dd0-f35b90981814/nuts-level-3-january-2015-super-generalised-clipped-boundaries-in-england-and-wales)  
153 [clipped-boundaries-in-england-and-wales](https://data.gov.uk/dataset/b147a160-86b6-48e4-8dd0-f35b90981814/nuts-level-3-january-2015-super-generalised-clipped-boundaries-in-england-and-wales) accessed 25 November 2020).  
154  
155



156  
157  
158  
159  
160  
161  
162  
163

**Fig. 3. Ranked intent to accept a COVID-19 vaccine.** The estimated proportion of respondents in each of the UK's 174 NUTS3 region who would definitely accept a COVID-19 vaccine are shown and ranked within the 12 first-level NUTS regions (NUTS1). 70% and 95% highest posterior density intervals (horizontal bars) are shown around the mean estimate (dot). Each region is suffixed by its rank (out of 174) according to the estimated proportion who would “definitely” accept a COVID-19 vaccine. East Cumbria (North West England) ranks first, while Haringey and Islington (London) is last.

164 The five regions with the highest proportions of the UK public who would “definitely” accept a COVID-  
165 19 vaccine are East Cumbria (64.8%, 54.2 to 76.6%), Aberdeen City and Aberdeenshire (63.2%, 54.9 to  
166 71.1%), West Cumbria (61.5%, 48.3 to 75.3%), Conwy and Denbighshire (61.3%, 50.3 to 73.7%), and  
167 the City of Edinburgh (59.6%, 51.0 to 67.1%). The top 20 regions disproportionately contain regions in  
168 Scotland (5 regions) and Northern Ireland (4) (fig 3 and the supplementary data file). (In fact, Scotland  
169 and NI have 13 of the highest-ranking regions in the top 26.)  
170

171 The regions with the highest estimated proportions who would “definitely not” accept a COVID-19  
172 vaccine are again predominately located in London and the North West. Haringey and Islington (19.0%  
173 (12.8 to 25.6%), Blackburn with Darwen (16.6, 9.8 to 25.0), and Redbridge and Waltham Forest (16.3%,  
174 11.7 to 21.1%) have the highest estimated proportions who would “definitely not” accept the vaccine,  
175 while East Cumbria (3.8%, 2.0 to 5.8%), Aberdeen City and Aberdeenshire (4.1%, 2.8 to 5.9%), and  
176 West Cumbria (4.5%, 2.2 to 7.5%) have the lowest. Estimates for the proportions of respondents who  
177 are “unsure” about taking a COVID-19 vaccine are provided in the supplementary data file and mapped  
178 in the appendix, figure S1.  
179

### 180 **Socio-demographic determinants of vaccination intent**

181 The fixed-effects in the ordinal multilevel regression (see statistical analysis and appendix 2) – which  
182 represent an “average” impact of socio-econo-demographic characteristics on vaccination intent across  
183 the whole country – are shown in figure 4.  
184

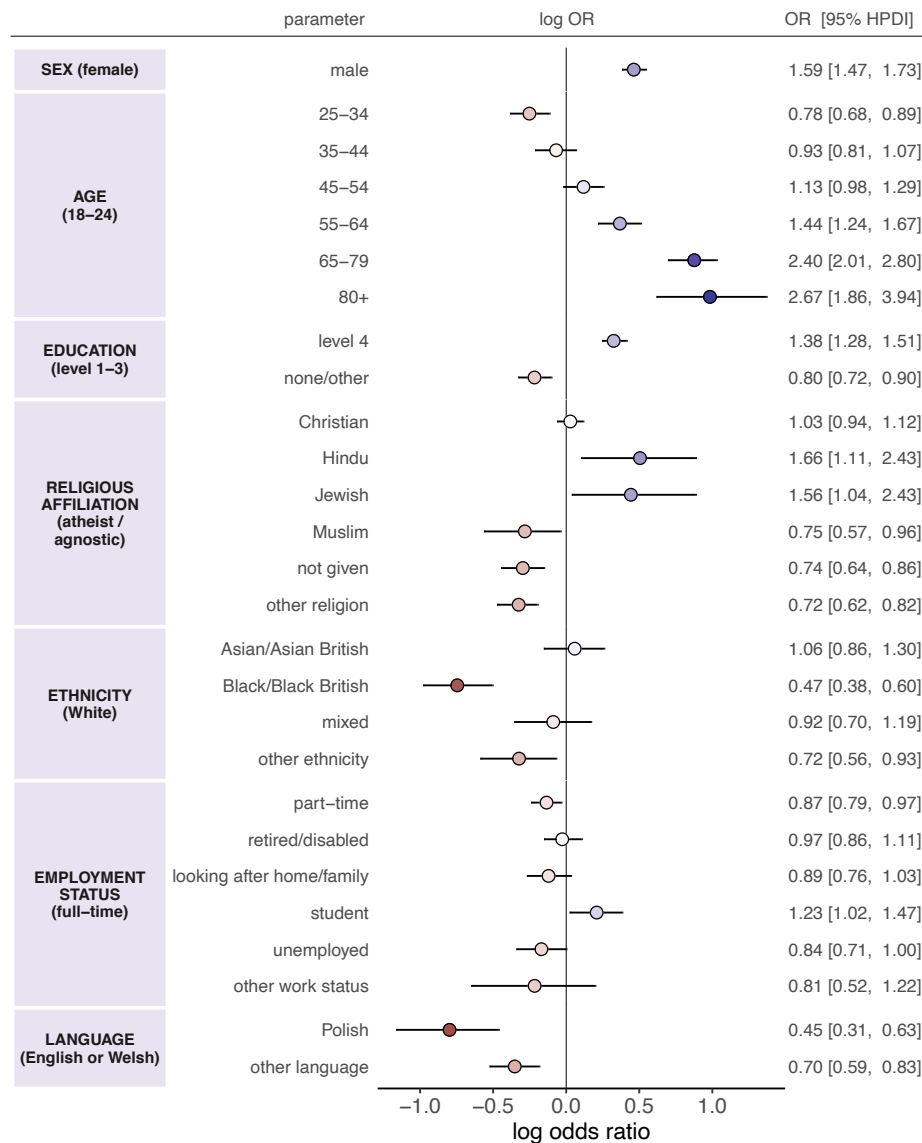
185 A number of factors are associated with COVID-19 vaccine intent. Males are more likely than females  
186 (odds ratio 1.59, 95% HPDI 1.47 to 1.73) to accept a COVID-19 vaccine. Older age groups are more  
187 likely to accept a COVID-19 vaccine than 18-24-year-olds, in particular 65-79 and 80+ year-olds (2.40,  
188 2.01 to 2.80 and 2.67, 1.86 to 3.94, respectively). Interestingly, 25-34-year-olds are *less* likely than 18-  
189 24-year-olds to accept a vaccine (0.78, 0.68 to 0.89). Individuals with undergraduate or postgraduate  
190 qualifications (level 4) are more likely than those with GCSEs, A- or O-levels to accept a vaccine (1.38,  
191 1.28 to 1.51) while those with no formal qualifications or other qualifications (see table 1) are less likely  
192 (0.80, 0.72 to 0.90).  
193

194 There is no evidence to suggest those who identify as Christian are more or less likely than atheists or  
195 agnostics to accept a vaccine (1.03, 0.94 to 1.12), those reporting Hinduism or Judaism as their religion  
196 are more likely than atheists or agnostics to accept a vaccine (1.66, 1.11 to 2.43 and 1.56, 1.04 to 2.43,  
197 respectively). Those identifying as Muslim (0.75, 0.57 to 0.96), not providing their religion (0.74, 0.64  
198 to 0.86), or stating an “other” religious affiliation (0.72, 0.62 to 0.82) are less likely to accept a COVID-  
199 19 than atheists or agnostics. Ethnicity also plays a role in determining intent to accept a COVID-19  
200 vaccine, independently of religion, with those identifying as Black or Black British (0.47, 0.38 to 0.60)  
201 and those reporting an “other” ethnicity than those provided (0.72, 0.56 to 0.93) less likely to accept a  
202 COVID-19 vaccine than Whites.  
203

204 Individuals’ employment status appears to play less of a role than the other factors outlined above, with  
205 odds ratios closer to one. However, there is evidence to suggest that those in part-time work (0.87, 0.79  
206 to 0.97) or who are unemployed (0.84, 0.71 to 1.00) are less likely than those in full-time in employment  
207 to accept a COVID-19 vaccine, while students (1.23, 1.02 to 1.47) are more likely.  
208

209 Individuals who report a language other than English or Welsh as their primary language hold less intent  
210 to accept to accept a vaccine than those reporting English or Welsh (Polish 0.45, 0.31 to 0.63 and “other”  
211 language 0.70, 0.59 to 0.83).  
212

## socio-econo-demographic determinants of intent to accept a COVID-19 vaccine (fixed-effects)



213  
214  
215  
216  
217  
218  
219  
220

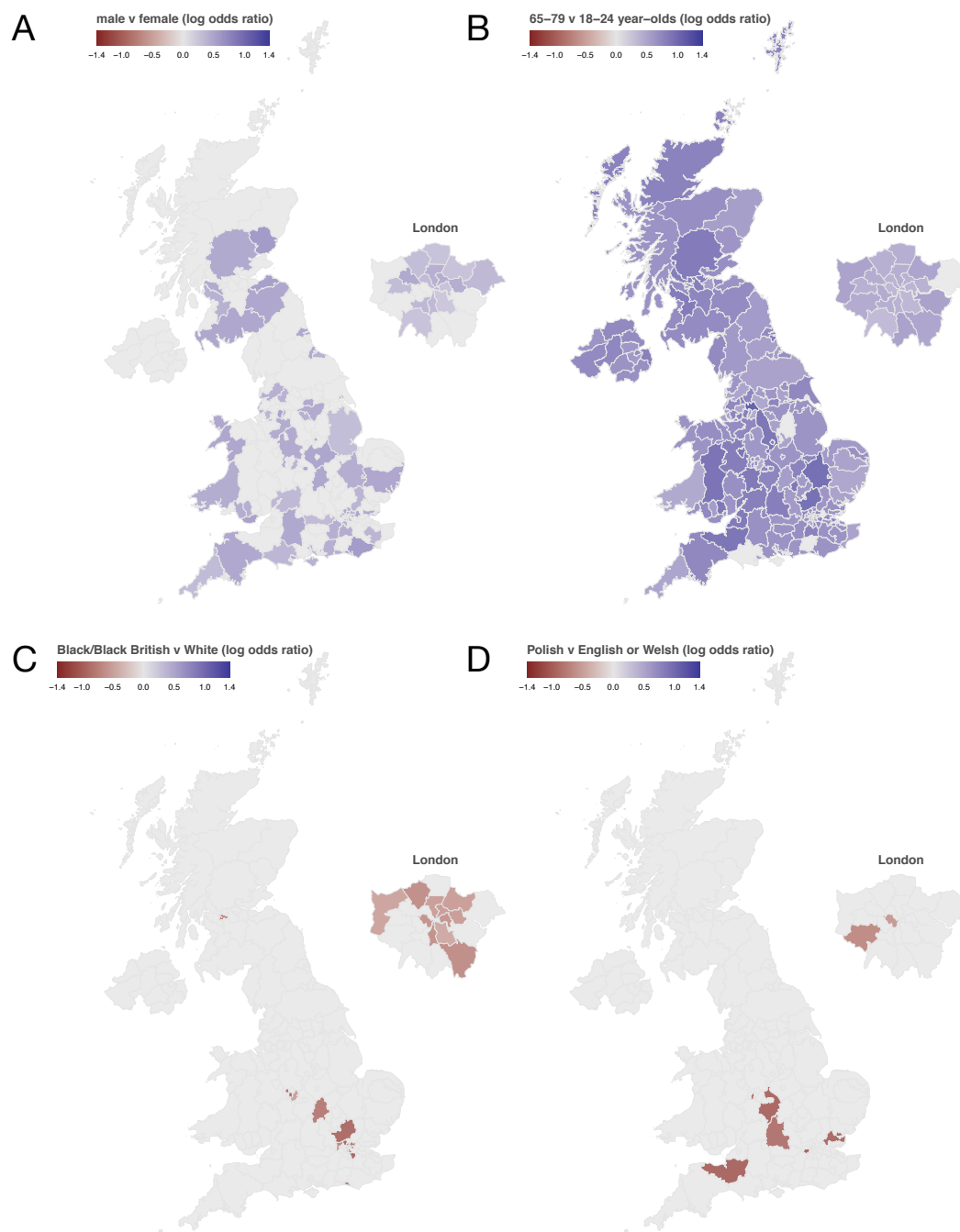
**Fig.4. The socio-demographic determinants of intent to accept a COVID-19 vaccine.** Multilevel regression fixed-effect parameter log odds ratios are plotted with corresponding 95% HPDIs. These log odds ratios are coloured by effect magnitude and direction, where blues (reds) signify that the group is more (less) likely than the baseline group to accept a COVID-19 vaccine. The darker the colour the stronger the association. For each factor, the baseline group is provided in parentheses on the left. Odds ratios with 95% HPDIs are shown on the right for each parameter.

221  
222  
223  
224  
225  
226  
227  
228  
229

Variation in socio-demographic determinants of uptake across the UK are shown in figure 4 for the fixed-effect parameters with the strongest overall association with uptake intent. To focus on the strongest associations between socio-demographic factor and uptake, regions are coloured if the 95% HPDI excludes zero and set to zero otherwise. Males are found to be more likely to accept a COVID-19 vaccine in 67 UK regions (figure 5A), while 65-79-year-olds are found to be more likely to accept the vaccine than 18-24-year-olds in all but eight UK regions (figure 5B). There is evidence that individuals identifying as Black/Black British are less likely than those identifying as White to accept the vaccine in 17 UK regions mostly concentrated in London (e.g., Hackney and Newham, Tower Hamlets, Haringey and Islington, Lewisham and Southwark), the West Midlands (Birmingham Sandwell, and



230 Wolverhampton), and Brighton and Hove (figure 5C). Polish speakers are found to be less likely than  
231 English or Welsh speakers to accept the vaccine in seven UK regions (figure 5D). All region-specific  
232 random-effect parameters with corresponding HPD intervals are provided for national and local  
233 policymakers in the supplementary data file and shown in SM figure S3.  
234  
235

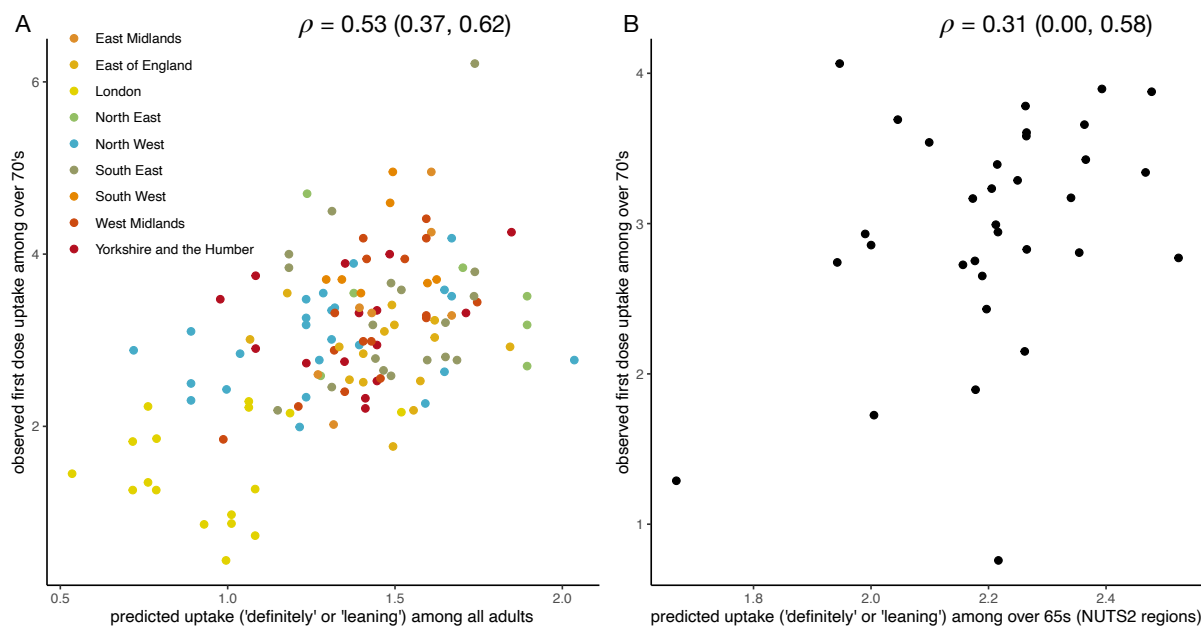


236  
237 **Fig.5. Sub-national socio-demographic determinants of intent to accept a COVID-19 vaccine.** Multilevel regression  
238 random-effect parameter log odds ratios are shown for the four socio-demographic sub-groups that show the strongest  
239 differential association with uptake. Log odds ratios are shown for each sub-national region for A) sex (males versus females),  
240 B) age (65-79 year-olds versus 18-24 year-olds), C) ethnicity (Black/Black British v White), D) language (Polish v English  
241 or Welsh). Blues denote that the group has a positive association with intent to accept a COVID-19 vaccine with respect to  
242 the baseline group, while holding all other covariates constant. For example, in all cases when the 95% HPDI intervals around  
243 the male random-effect parameters exclude zero, males are more likely than females to state they would accept the vaccine.  
244 Parameters whose 95% HPDIs exclude zero (all other parameters are set to zero for the purpose of visualisation)  
245

## 246 Model validation against recent UK uptake data

247 Vaccination rollout began in the UK on 8 December 2020. Data are now available on the percentage of  
248 first doses administered in each of England's 136 Clinical Commissioning groups (CCG) for over 70s  
249 (who have now been offered a vaccine) as well as the estimated over 70 population in each of these  
250 regions<sup>18</sup>. To obtain validation for the modelling approach in this study, two checks are performed.  
251 Firstly, all regional forecasts across England are correlated with observed uptake among over 70s and  
252 secondly, multilevel regression and poststratification is reimplemented for all individuals aged over 65  
253 (census microdata records bin respondents by age, and so it was necessary to include some respondents  
254 less than 70 so as to not remove respondents aged 70-74 from the analysis) at the second NUTS level.  
255 As there are 3,338 individuals aged over 65 collected in the survey, MRP estimates are generated at the  
256 40 second level NUTS units across the UK (of which 33 units are in England). Occasionally, regional  
257 boundaries do not precisely align between CCG and NUTS units and, when this is the case, population-  
258 weighted averages are taken to provide a reasonable mapping between acceptance forecasts in the NUTS  
259 units and the CCGs. First dose data are used, since the UK vaccination policy involves a four- to 12-  
260 week delay between of either the Pfizer-BioNTech or Oxford-AstraZeneca vaccine in the majority of  
261 cases, and will therefore be more representative of uptake compared to a completed two-dose schedule<sup>19</sup>.

262  
263 Predicted vaccine acceptance (the percentage of respondents stating they would "definitely" vaccinate  
264 or who are "unsure, but leaning towards yes") across all England regions and for all adults correlates  
265 with observed uptake among over 70s ( $\rho=0.53$  (0.37, 0.62), figure 6A). Predicted uptake is lower than  
266 observed uptake, because COVID-19 vaccines have not been made available to the vast majority of  
267 younger age groups. Predicted acceptance among all over 65s surveyed also correlates with observed  
268 uptake among over 70s, though this correlation is weaker ( $\rho=0.31$  (0.00, 0.58), figure 6B). Predicted  
269 uptake is again lower than observed, which is possibly due to 65–69-year-olds being included in the  
270 analysis or because of changes in the UK's vaccine acceptance since survey data was collected in late  
271 2020.  
272



273  
274  
275 **Fig. 6. Forecasts of vaccine acceptance correlates at sub-national levels correlates with observed first-dose COVID-19**  
276 **vaccine uptake among over 70s.** (A) Observed vaccination coverage across all England Clinical Commissioning Groups  
277 correlates with predicted uptake across the UK adult population. (B) Observed vaccination coverage across 33 NUTS2 levels  
278 across England correlates with predicted uptake among over 65s surveyed in this study. Coverage values on both axes have  
279 been scaled using the inverse logit transform.

## 280 Discussion

281 This study reports multiple findings of immediate relevance to clinicians and policymakers involved  
282 with the delivery of a COVID-19 vaccine. This study estimates that less than half the UK public would  
283 “definitely” accept a COVID-19 vaccine, with strong regional variation in estimates. Although a  
284 relatively small proportion (8.7%, 8.2 to 9.2%) state that they would “definitely, not” accept a vaccine,  
285 rates of rejection intent are much higher in London and the North West, where they reach as high as  
286 18.0% (14.8 to 20.7%) in Haringey and Islington. Since February 2020, London and the North West  
287 have experienced high disease burdens. The North West is particularly notable in this regard as four of  
288 the five UK regions with the highest infection rate (correct of 20 November 2020) are all in the North  
289 West: Blackburn and Darwen (6,312 per 100,000), Oldham (6,157), Rochdale (5,585), and Manchester  
290 (5,539)<sup>20</sup>. Interestingly, Blackburn and Darwen has the fifth lowest intent to accept a COVID-19 vaccine  
291 (ranking 170 out of 174), while Oldham and Rochdale rank ninth lowest (Greater Manchester North East  
292 – which contains both these towns – ranks 166 out of 174). Manchester fares a little better ranking 148  
293 out of 174. These results point to an important possible interaction between high COVID-19 rates and  
294 low vaccine acceptance and the effect this may have on vaccination rates required for herd/community  
295 immunity in adjacent regions<sup>13–15</sup>. Significant correlations are observed between sub-national forecasts  
296 and first-dose vaccination uptake among over 70s, validating the modelling approach.  
297

298 Socio-demographic background is strongly associated with intent to accept the vaccine. This study finds  
299 strong evidence to suggest that males, and older age groups are substantially more likely to accept a  
300 COVID-19 vaccine than females and 18-24-year-olds (respectively). Highest level of education,  
301 ethnicity, religious affiliation, and primary language are also found to be strongly related to intent to  
302 accept a COVID-19 vaccine. Most notably, individuals who identify as Black or Black British are much  
303 less likely than Whites to intend to receive the vaccine, as too are those reporting Polish as their primary  
304 language. These associations have been found with regards to existing immunisation programmes<sup>21–24</sup>,  
305 as well as – more recently – with respect to vaccine acceptance of a COVID-19 vaccine specifically. A  
306 study of over 30,000 adults in the UK conducted between 7 September to 5 October, found similar rates  
307 of intent to reject a vaccine (14% of respondents unwilling to receive a vaccine compared to 8.7% --  
308 comparison of intent to accept a vaccine is difficult due to differences in questionnaire wording and  
309 socio-demographic drivers of intent<sup>12</sup>. Notably, that females and those with education levels below  
310 postgraduate degrees were less likely to accept a COVID-19 vaccine. A link between BAME groups and  
311 uptake was not found at a 95% significance testing interval, however<sup>12</sup> (this could be because of the  
312 aggregation of BAME groups and/or a different set of predictor variables used to explain variation in  
313 uptake intent). Two other recent studies examining COVID-19 vaccine intent in England and Scotland,  
314 however, do find that intent to accept a COVID-19 vaccine is modulated by ethnicity, with non-Whites  
315 less likely to accept a COVID-19 vaccine<sup>25,26</sup>. As risk of severe COVID-19 is greater in BAME  
316 communities<sup>27</sup>, achieving high vaccine acceptance may avert further burden within these communities.  
317 (The author refers policymakers to the supplementary data file which reveals regions in which there is a  
318 strong association between ethnicity and uptake intent.)  
319

320 There are a number of study limitations to note. Firstly, this study maps intent to accept a COVID-19  
321 vaccine across the entire population and does not assess vaccine acceptance among at-risk groups or  
322 healthcare workers, who are likely to be the first groups offered a novel vaccine. Secondly, the most  
323 recent census data used for probability reweighting (see *Statistical analysis* and appendix 2) is from  
324 2011. Large changes in the demographic structure of the 174 regional populations could, therefore, result  
325 in biased estimates of vaccine intent. Finally, the study was conducted online with a sample of panellists  
326 who registered to take part in research surveys. While efforts have been made to ensure  
327 representativeness via MRP, there may be a bias among respondents who have access to (and can use)  
328 mobile phones or computers, through which the questionnaire would be completed.  
329

330 While this study provides a comprehensive snapshot of intent to accept a vaccine across the UK in  
331 September and October 2020, it predates both the Pfizer announcement that approval is being sought for  
332 use in the UK and the peak of the second wave of daily new coronavirus cases. Attitudes may change  
333 on short timescales. As the second wave passes, the UK public may have a decreased appreciation for  
334 the importance of the vaccine through either a decrease in the perception of the seriousness of disease  
335 or a belief that they have already been infected with SARS-CoV-2 (which is associated with willingness  
336 to vaccinate<sup>24</sup>. Fears relating to the safety of the vaccine could also grow due to the relative speed of  
337 vaccine development or because vaccinating is now a reality rather than a hypothetical. Online  
338 misinformation could also play a role in shaping vaccination beliefs.

339  
340 Despite these limitations, this study greatly extends existing research on both COVID-19 vaccine  
341 intentions and – more broadly – on the spatial resolution obtained for studies estimating nations’  
342 vaccination beliefs or intentions<sup>28,29</sup>. By virtue of a more granular sub-national modelling approach,  
343 estimates are derived at regional scales consistent with those relevant for local policymaking or for  
344 improving epidemiological projections of COVID-19 mortality in the UK<sup>30</sup>. UK policymakers will need  
345 to be prepared to address vaccine concerns within the communities and regions identified in this study.

346  
347

## 348 **Methods**

### 349 **Data collection**

350 Between 24 September and 14 October 2020, a cross-sectional online survey (see Supplementary  
351 Materials) probing acceptance of a novel COVID-19 vaccine was administered to 17,684 UK residents  
352 aged 18 and over. Informed consent was obtained from all respondents before the survey commenced.  
353 During data collection, quality control procedures resulted in the removal of 864 respondents (see  
354 *Methods*). The initial sample size was chosen to maximise the number of observations within each of  
355 the sub-national regions: this study has approximately 100 observations for each of the 174 sub-national  
356 regions, which far exceeds sample sizes used in similar research<sup>31</sup>. Respondent quotas were set according  
357 to national demographic distributions for sex, age, and sub-national region (the second level of the  
358 Nomenclature of Territorial Units for Statistics, or ‘NUTS2’, see  
359 <https://www.ons.gov.uk/methodology/geography/ukgeographies/eurostat> accessed 25 November 2020)  
360 and which were re-adjusted based on the removal of respondents through the ongoing quality control  
361 checks during data collection. These quotas ensured a geographic spread of respondents across the UK,  
362 between the sexes, and across all age groups. All respondents were recruited via an online panel by ORB  
363 (Gallup) International ([www.orb-international.com](http://www.orb-international.com)) and informed consent was obtained before  
364 respondents participated.

365  
366 The initial sample size was chosen to maximise the number of observations within each of the sub-  
367 national regions: this study has approximately 100 observations for each of the 174 sub-national regions,  
368 which far exceeds sample sizes used in similar research<sup>31</sup>. Respondent quotas were set according to  
369 national demographic distributions for sex, age, and sub-national region (the second level of the  
370 Nomenclature of Territorial Units for Statistics, or ‘NUTS2’, see  
371 <https://www.ons.gov.uk/methodology/geography/ukgeographies/eurostat> accessed 25 November 2020)  
372 and which were re-adjusted based on the removal of respondents through the ongoing quality control  
373 checks during data collection. These quotas ensured a geographic spread of respondents across the UK,  
374 between the sexes, and across all age groups. All respondents were recruited via an online panel by ORB  
375 (Gallup) International ([www.orb-international.com](http://www.orb-international.com)) and informed consent was obtained before  
376 respondents participated.

377  
378 The response variable is whether a respondent would accept a COVID-19 vaccine: “*If a new coronavirus*  
379 *(COVID-19) vaccine became available, would you accept the vaccine for yourself?*”, with responses on

380 a four-point ordinal scale: “yes, definitely”, “unsure, but leaning towards yes”, “unsure, but leaning  
381 towards no”, or “no, definitely not”. The rationale behind this choice of responses is to elicit an explicit  
382 vaccination intent rather than provide a continuous or Likert scale, from which the intent to vaccinate  
383 may be less clear.

384  
385 Covariate data are the socio-demographic traits collected for each individual and were chosen to align  
386 with the latest UK census: sex, age, highest educational attainment, religious affiliation, ethnicity,  
387 employment status, primary language, and outer postcode. Respondent’s outer postcode was used to  
388 map respondents to one of 174 third level NUTS regions (NUTS3). The maximum number of surveys  
389 conducted in a NUTS3 region is 293 (Hertfordshire) and the minimum is 16 (Mid and East Antrim). The  
390 mean number of responses per NUTS3 unit is 96.7 (with standard deviation 52.1) and the median is 85.  
391 A breakdown of the number of individuals surveyed by socio-demographic characteristic is found in  
392 Supplementary Materials, figure S1 and the survey counts for each NUTS3 region can be found in the  
393 supplementary data file.

### 394 395 **Multilevel regression and poststratification**

396 Multilevel regression and poststratification (MRP) is used to estimate opinions aggregated at sub-  
397 national regions from survey data collected at the national level, via partial pooling of information  
398 between these national and sub-national scales<sup>32</sup>. This pooling of information between the two levels is  
399 a compromise between estimates derived via a total aggregation of data (to estimate national trends only)  
400 and estimates via complete disaggregation (that is, estimating regional trends only). The former suffers  
401 from a loss of information at the regional level while the latter suffers from possible low data counts and  
402 the loss of statistical power. More pooling of information will occur in regions with low relative numbers  
403 of surveyed individuals and less pooling in regions with high relative counts.

404  
405 In brief (and relating specifically to this study), the first step of MRP is to conduct a multilevel regression  
406 to estimate, for each stratum (that is, a possible combination of individual characteristics) and for each  
407 region, the probability of COVID-19 vaccine acceptance. The second step is to reweight (post-stratify)  
408 these strata probabilities by the frequency with which a given strata appears in a population. In this study  
409 individual-level UK census data is used to perform the reweighting.

### 410 411 **Part 1: Multilevel regression**

412 Individual intent to accept a COVID-19 vaccine is specified as  $y_{ij} \in \{1,2,3,4\}$ , where 1 = “no, definitely  
413 not”, 2 = “unsure, but leaning towards no”, 3 = “unsure, but leaning towards yes”, and 4 = “yes,  
414 definitely” and  $1 < 2 < 3 < 4$ . Here,  $j = 1, \dots, 174$  is one of the  $J = 174$  third National Territorial Units  
415 for Statistics (NUTS3) regions in the UK, and  $i = 1, \dots, n_j$ , where  $n_j$  is the number of individuals  
416 surveyed in region  $j$ .  $\sum_j n_j = 16,820$  is the total number of respondents in the survey. A breakdown of  
417 the number of respondents in each region and a summary of their socio-econo-demographic status is  
418 given in the supplementary data file.

419  
420 Intent to accept a COVID-19 vaccine is modelled as a multilevel ordinal regression with the  
421 proportional odds assumption<sup>33</sup>,

$$422 \quad Y_{ij} | \mathbf{p}_{ij}, n_j, \sim \text{Multi}(\mathbf{p}_{ij}, 1)$$
$$423 \quad \log \frac{\Pr(Y_{ij} \leq k | X_{ij})}{\Pr(Y_{ij} > k | X_{ij})}$$
$$424 \quad = \rho_k + \beta_j^{SEX[i]} + \beta_j^{AGE[i]} + \beta_j^{EDU[i]} + \beta_j^{REL[i]} + \beta_j^{ETH[i]} + \beta_j^{EMP[i]} + \beta_j^{LAN[i]}$$

425

426 for  $k$   
 427 = 1, \dots, 3,  
 428

429 where  $\beta_j^{SEX[i]}$ ,  $\beta_j^{AGE[i]}$ ,  $\beta_j^{EDU[i]}$ ,  $\beta_j^{REL[i]}$ ,  $\beta_j^{ETH[i]}$ ,  $\beta_j^{EMP[i]}$ , and  $\beta_j^{LAN[i]}$  are the random-effect varying  
 430 intercepts for sex, age, highest education level, religious affiliation, ethnicity, employment status, and  
 431 primary language (respectively);  $\rho_k$  are probability threshold parameters;  $k \in \{1,2,3,4\}$  is the ordinal  
 432 response category;  $\mathbf{p}_{ij} = [\Pr(Y_{ij} = 1), \Pr(Y_{ij} = 2), \Pr(Y_{ij} = 3), \Pr(Y_{ij} = 4)]$ ; and  $X_{ij}$  is the  
 433 covariate data for individual  $i$  in region  $j$ . The baseline group for the regression corresponds to an  
 434 individual who is male, aged 18-24, has an education level 1-3, is an atheist or agnostic, is White, works  
 435 full-time, and speaks English or Welsh as their primary language.

436  
 437 In line with prior recommendations for variance components in hierarchical models<sup>32,34</sup>, default weakly  
 438 informative priors are chosen for the random-effects regression coefficients  $\beta^1$ ,

$$\begin{aligned} 440 \quad \beta_j^c | \sigma^c &\sim N(\gamma^c, (\sigma^c)^2), & \text{for } c = 1, \dots, 27 \\ 441 \quad 1/(\sigma^c)^2 &= \tau^c \sim N_+(0,1), & \text{for } c = 1, \dots, 27 \\ 442 \quad \beta^c &\sim N(0,1), & \text{for } c = 1, \dots, 27, \end{aligned}$$

443  
 444 where  $c$  indexes the regression coefficients: excluding the threshold parameters, there are 27 fixed-  
 445 effect parameters:  $\gamma_j^{SEX=female}$ ,  $\gamma_j^{AGE=25-34}$ ,  $\gamma_j^{AGE=35-44}$ ,  $\gamma_j^{AGE=45-54}$ ,  $\gamma_j^{AGE=55-64}$ ,  $\gamma_j^{AGE=65-79}$ ,  
 446  $\gamma_j^{AGE=80+}$ ,  $\gamma_j^{EDU=level\ 4}$ ,  $\gamma_j^{EDU=none}$ ,  $\gamma_j^{REL=Christian}$ ,  
 447  $\gamma_j^{REL=Hindu}$ ,  $\gamma_j^{REL=Jewish}$ ,  $\gamma_j^{REL=Muslim}$ ,  $\gamma_j^{REL=Not\ given}$ ,  $\gamma_j^{REL=Other}$ ,  $\gamma_j^{ETH=Asian/Asian\ British}$ ,  
 448  $\gamma_j^{ETH=Black/Black\ British}$ ,  $\gamma_j^{ETH=Other}$ ,  $\gamma_j^{EMP=part-time}$ ,  $\gamma_j^{EMP=retired/disabled}$ ,  $\gamma_j^{EMP=student}$ ,  $\gamma_j^{EMP=other}$ ,  
 449  $\gamma_j^{EMP=looking\ after\ home}$ ,  $\gamma_j^{EMP=unemployed}$ ,  $\gamma_j^{LAN=Polish}$ , and  $\gamma_j^{LAN=other}$ . (And, thus, a total of  $27 \times 174$   
 450 = 4,698 random effect parameters.)

## 451 Part 2: Post-stratification

452  
 453 There are  $S = 30,870$  socio-econo-demographic strata (two sexes  $\times$  seven age groups  $\times$  three education  
 454 levels  $\times$  seven affiliations for religion  $\times$  five ethnicity groupings  $\times$  seven employment statuses  $\times$  three  
 455 languages). Denoting the posterior probabilities of COVID-19 vaccination intent for each stratum  $s =$   
 456  $1, \dots, S$  and NUTS3 region  $j = 1, \dots, J$  as  $\theta_{sjk}$  (where, as a reminder,  $k \in \{1,2,3,4\}$  denotes the response),  
 457 then the MRP estimate for the intent to vaccinate within each of the UK's 174 NUTS3 regions is,  
 458

$$459 \quad \Phi_{jk} = \sum_s \frac{N_s \theta_{sjk}}{N_s}.$$

460  
 461 In the main text, this quantity  $\Phi_{jk}$  is computed for  $k = 4$  (“yes, [I] definitely [would accept a COVID-  
 462 19 vaccine]”). Estimates are computed for those who are “unsure” (“unsure, but leaning towards yes”  
 463 and “unsure, but leaning towards no” have been combined) and are shown in figure S1 in the  
 464 supplementary materials.

## 466 Model: Implementation and output

<sup>1</sup> Instead of an noninformative  $N_+(0,100)$  distribution over the standard deviation of hierarchical variance parameters<sup>34</sup>, a weakly-informative  $N_+(0,1)$  prior is placed over the *precision* of these parameters, which places 95% of  $\sigma^c$ 's prior mass between 0.54 and 4.05.

467 The multilevel regression model detailed above is implemented using JAGS version 4.3.0 (implemented  
468 via `rjags`<sup>35</sup>) and R version 4.0.3. 25,000 posterior samples (excluding the first 5,000 for model burn-  
469 in) was sufficient for successful convergence and all posterior draws were well-mixed. The posterior  
470 draws for the fixed effects are shown in figure S4 and all look visibly well-mixed and all except “other  
471 work status” ( $p = 0.04$ ) have Geweke  $p$ -values above 0.05. There are too many posterior draws to plot  
472 for all random-effects, but we show posterior draws for the first UK NUTS3 region alphabetically  
473 (Hartlepool and Stockton-on-Tees) in figure S5 with a histogram of Geweke  $p$ -values for all model  
474 parameters (fixed effects, random effects, and variance components) to demonstrate universally good  
475 mixing and convergence in figure S3. In the computation of the Geweke statistic, the first 10% and final  
476 50% of the posterior samples used for computation are used. Convergence of variance parameters is  
477 shown in figure S6. A slightly larger fraction of Geweke  $p$ -values fall below 0.05 than is expected by  
478 chance (0.082 compared to 0.05 by chance). Manual inspection of these chains revealed no cause for  
479 concern: chains showed no ill-mixing or convergence issues.  
480  
481

482  
483  
484  
485  
486  
487  
488  
489  
490  
491  
492  
493  
494  
495  
496  
497  
498  
499  
500  
501  
502  
503  
504  
505  
506  
507  
508  
509  
510  
511  
512  
513  
514  
515  
516  
517  
518  
519  
520  
521  
522  
523  
524  
525  
526  
527  
528  
529  
530  
531  
532  
533  
534  
535  
536  
537  
538  
539  
540  
541

## References

1. UK Government. *UK Authorises Pfizer/BioNTech COVID-19 Vaccine.*; 2020.
2. Brown KF, Long SJ, Ramsay M, et al. UK parents' decision-making about measles-mumps-rubella (MMR) vaccine 10 years after the MMR-autism controversy: A qualitative analysis. *Vaccine*. Published online 2012. doi:10.1016/j.vaccine.2011.12.127
3. Loomba S, de Figueiredo A, Piatek SJ, de Graaf K, Larson HJ. Measuring the Impact of Exposure to COVID-19 Vaccine Misinformation on Vaccine Intent in the UK and US. *Nat Hum Behav*. Published online January 1, 2021:2020.10.22.20217513. doi:10.1101/2020.10.22.20217513
4. Pennycook G, McPhetres J, Zhang Y, Lu JG, Rand DG. Fighting COVID-19 Misinformation on Social Media: Experimental Evidence for a Scalable Accuracy-Nudge Intervention. *Psychol Sci*. Published online 2020. doi:10.1177/0956797620939054
5. Megget K. Even covid-19 can't kill the anti-vaccination movement. *BMJ*. Published online 2020. doi:10.1136/bmj.m2184
6. World Health Organization. WHO UNICEF estimates of national immunisation coverage. Published 2019. Accessed June 1, 2020. [https://www.who.int/immunization/monitoring\\_surveillance/data/en/](https://www.who.int/immunization/monitoring_surveillance/data/en/)
7. Edelstein M, Müller M, Ladhani S, Yarwood J, Salathé M, Ramsay M. Keep calm and carry on vaccinating: Is anti-vaccination sentiment contributing to declining vaccine coverage in England? *Vaccine*. Published online 2020. doi:10.1016/j.vaccine.2020.05.082
8. NHS. Childhood Vaccination Coverage Statistics - England 2018-19. Published online 2019.
9. WHO. Measles reported cases. Published online 2020.
10. Jacqui W. MMR vaccine: Johnson urges new impetus to increase uptake as UK loses measles-free-status. *BMJ*. 2019;I5219.
11. Sherman SM, Smith LE, Sim J, et al. COVID-19 vaccination intention in the UK: results from the COVID-19 vaccination acceptability study (CoVAccS), a nationally representative cross-sectional survey. *Hum Vaccin Immunother*. Published online November 26, 2020:1-10. doi:10.1080/21645515.2020.1846397
12. Paul E, Steptoe A, Fancourt D. Anti-vaccine attitudes and risk factors for not agreeing to vaccination against COVID-19 amongst 32,361 UK adults: Implications for public health communications. *medRxiv*. Published online January 1, 2020:2020.10.21.20216218. doi:10.1101/2020.10.21.20216218
13. Kwok KO, Lai F, Wei WI, Wong SYS, Tang JWT. Herd immunity – estimating the level required to halt the COVID-19 epidemics in affected countries. *J Infect*. Published online 2020. doi:10.1016/j.jinf.2020.03.027
14. Salathé M, Bonhoeffer S. The effect of opinion clustering on disease outbreaks. *J R Soc Interface*. Published online 2008. doi:10.1098/rsif.2008.0271
15. Peeples L. Rethinking herd immunity. *Nat Med*. Published online 2019. doi:10.1038/s41591-019-0515-2
16. Lauderdale BE, Bailey D, Blumenau J, Rivers D. Model-based pre-election polling for national and sub-national outcomes in the US and UK. *Int J Forecast*. Published online 2020. doi:10.1016/j.ijforecast.2019.05.012
17. Kastellec JP, Lax JR, Phillips J. *Estimating State Public Opinion With Multi-Level Regression and Poststratification Using R.*; 2014.
18. NHS. Statistics: COVID-19 Vaccinations. Published 2021. Accessed February 21, 2021. <https://www.england.nhs.uk/statistics/statistical-work-areas/covid-19-vaccinations/>
19. Voysey, M., Costa Clemens, S.A., Madhi, S.A., Weckx, L.Y., Folegatti, P.M., Aley, P.K., Angus, B.J., Baillie, V., Barnabas, S.L., Borhat, Q.E. and Bibi S. Single dose administration, and the influence of the timing of the booster dose on immunogenicity and efficacy of ChAdOx1 nCoV-19 (AZD1222) vaccine. *The LancetLancet*. Published online 2021.
20. Government U. Coronavirus (COVID-19) in the UK. Published 2020. Accessed June 20, 2020. <https://coronavirus.data.gov.uk>
21. Forster AS, Rockliffe L, Chorley AJ, et al. Ethnicity-specific factors influencing childhood immunisation decisions among Black and Asian Minority Ethnic groups in the UK: A systematic review of qualitative research. *J Epidemiol Community Health*. Published online 2017. doi:10.1136/jech-2016-207366
22. Samad L, Tate AR, Dezateux C, Peckham C, Butler N, Bedford H. Differences in risk factors for partial and no immunisation in the first year of life: Prospective cohort study. *Br Med J*. Published online 2006. doi:10.1136/bmj.332.7553.1312
23. Tiley KS, White JM, Andrews N, Ramsay M, Edelstein M. Inequalities in childhood vaccination timing and completion in London. *Vaccine*. Published online 2018. doi:10.1016/j.vaccine.2018.09.032
24. Ward C, Byrne L, White JM, Amirthalingam G, Tiley K, Edelstein M. Sociodemographic predictors of variation in coverage of the national shingles vaccination programme in England, 2014/15. *Vaccine*. Published online 2017. doi:10.1016/j.vaccine.2017.03.042
25. Bell S, Clarke R, Mounier-Jack S, Walker JL, Paterson P. Parents' and guardians' views on the acceptability of a future COVID-19 vaccine: A multi-methods study in England. *Vaccine*. Published online 2020. doi:10.1016/j.vaccine.2020.10.027



- 542 26. Williams L, Flowers P, McLeod J, Young D, Rollins L. Social patterning and stability of COVID-19 vaccination  
543 acceptance in Scotland: Will those most at risk accept a vaccine? *medRxiv*. Published online January 1,  
544 2020:2020.11.19.20234682. doi:10.1101/2020.11.19.20234682
- 545 27. Raisi-Estabragh Z, McCracken C, Bethell MS, et al. Greater risk of severe COVID-19 in Black, Asian and  
546 Minority Ethnic populations is not explained by cardiometabolic, socioeconomic or behavioural factors, or by  
547 25(OH)-vitamin D status: study of 1326 cases from the UK Biobank. *J Public Health (Oxf)*. Published online 2020.  
548 doi:10.1093/pubmed/fdaa095
- 549 28. de Figueiredo A, Simas C, Karafillakis E, Paterson P, Larson HJ. Mapping global trends in vaccine confidence and  
550 investigating barriers to vaccine uptake: a large-scale retrospective temporal modelling study. *Lancet*. Published  
551 online 2020. doi:10.1016/s0140-6736(20)31558-0
- 552 29. Lazarus J V., Ratzan SC, Palayew A, et al. A global survey of potential acceptance of a COVID-19 vaccine. *Nat*  
553 *Med*. Published online 2020. doi:10.1038/s41591-020-1124-9
- 554 30. Knock ES, Whittles LK, Lees JA. The 2020 SARS-CoV-2 epidemic in England: key epidemiological drivers and  
555 impact of interventions. *medRxiv*. Published online 2020.
- 556 31. Hanretty C. An Introduction to Multilevel Regression and Post-Stratification for Estimating Constituency Opinion.  
557 *Polit Stud Rev*. Published online 2020. doi:10.1177/1478929919864773
- 558 32. Gao Y, Kennedy L, Simpson D, Gelman A. Improving multilevel regression and poststratification with structured  
559 priors. *arXiv*. Published online 2019. doi:10.1214/20-ba1223
- 560 33. Hedeker D. Multilevel models for ordinal and nominal variables. In: *Handbook of Multilevel Analysis.* ; 2008.  
561 doi:10.1007/978-0-387-73186-5\_6
- 562 34. Gelman A. Prior distributions for variance parameters in hierarchical models (Comment on Article by Browne and  
563 Draper). *Bayesian Anal*. Published online 2006. doi:10.1214/06-BA117A
- 564 35. Plummer M. rjags: Bayesian graphical models using MCMC. *R Packag version 3-13*. Published online 2016.
- 565  
566  
567

## 568 Acknowledgments

569

570 **Funding:** This project was funded by the Imperial College COVID-19 Response Fund.

571

572 **Competing interests:** The Author is involved in Vaccine Confidence Project collaborative grants with  
573 GlaxoSmithKline outside the submitted work.

574

575 **Ethical Approval:** Approval for this study was obtained via the Imperial College Research Ethics  
576 Committee on 24 July 2020 with reference 20IC6133 and European Union GDPR guidelines were followed  
577 throughout.

578

579 **Data and materials availability:** All data used in this study will be made available at <GitHub URL to be  
580 inserted>.

581