

**Combined prenatal *Lactobacillus reuteri* and  $\omega$ -3 supplementation synergistically modulates DNA methylation in neonatal T helper cells**

Johanna Huoman PhD<sup>1</sup>, David Martínez-Enguita MSc<sup>2</sup>, Elin Olsson MSc<sup>2</sup>, Jan Ernerudh MD PhD<sup>3</sup>, Lennart Nilsson MD PhD<sup>4</sup>, Karel Duchén MD PhD<sup>4</sup>, Mika Gustafsson PhD<sup>2\*</sup> and Maria C Jenmalm PhD<sup>1\*</sup>

<sup>1</sup> Division of Inflammation and Infection, Department of Biomedical and Clinical Sciences, Linköping University, Linköping, Sweden

<sup>2</sup> Department of Physics, Chemistry and Biology, Linköping University, Linköping, Sweden

<sup>3</sup> Department of Clinical Immunology and Transfusion Medicine, Department of Biomedical and Clinical Sciences, Linköping University, Linköping, Sweden

<sup>4</sup> Allergy Center, Department of Biomedical and Clinical Sciences, Linköping University, Linköping, Sweden

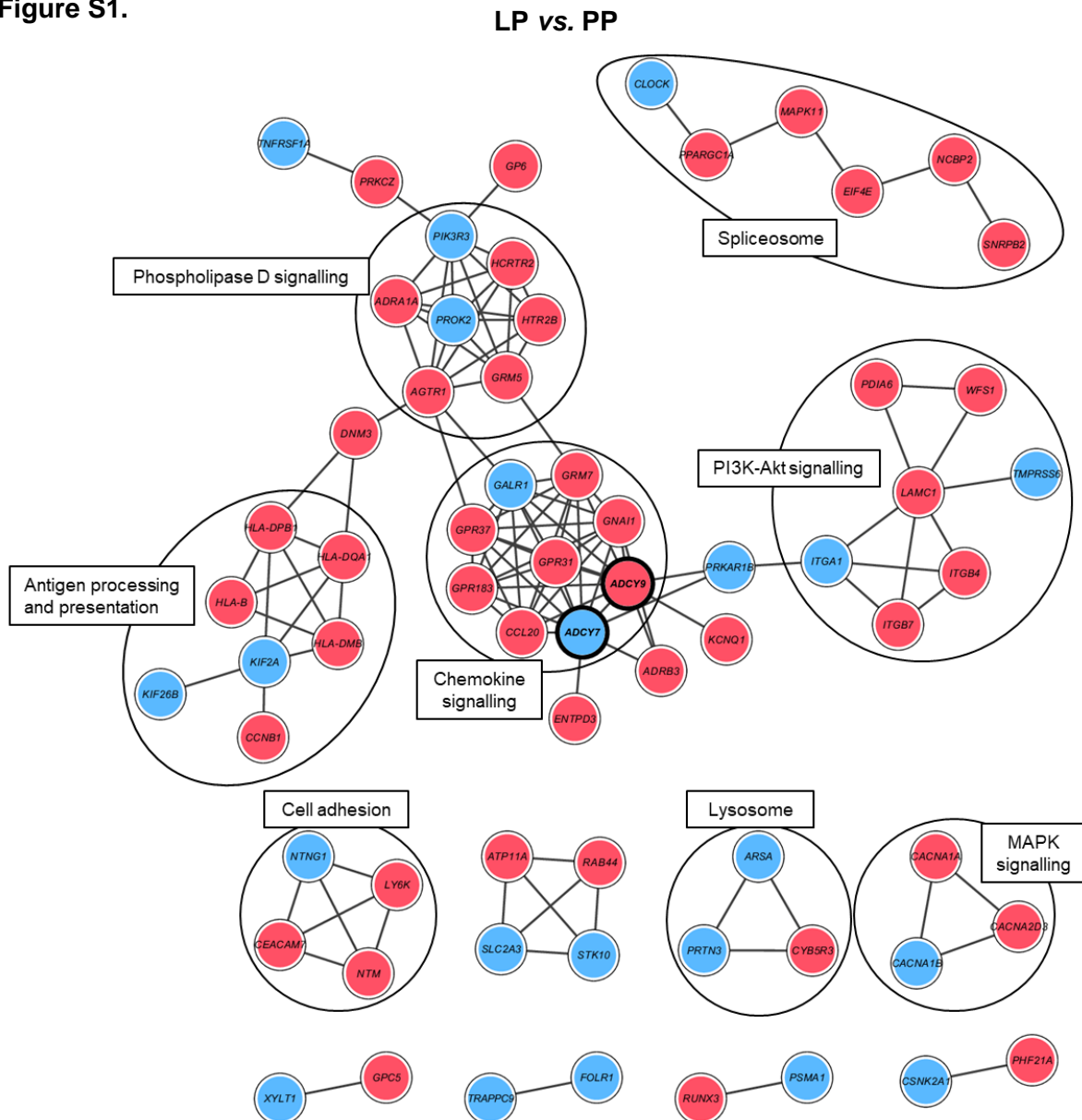
\*shared senior authorship

**SUPPLEMENTARY APPENDIX**

Including Figures S1-S12 and Tables S3, S6-S11. Tables S1-S2, S4-S5 are supplied in separate files.

## RESULTS – SUPPLEMENTARY FIGURES AND TABLES

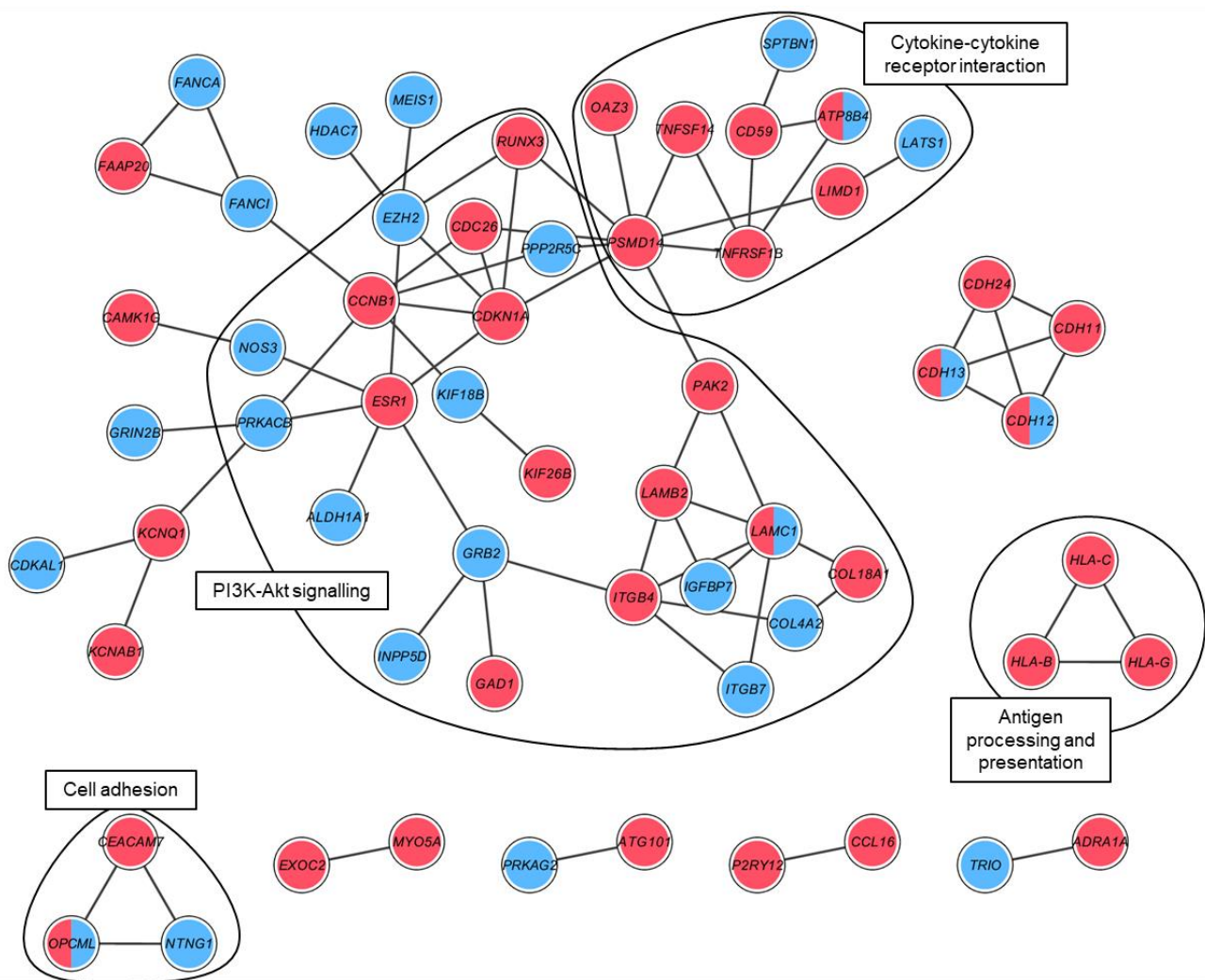
Figure S1.



**Figure S1.** Visualisation of the consensus module created with the DMGs from the differential methylation comparison between the single treated *L.reuteri*/placebo (LP) and the double placebo (PP) group. Nodes represent genes and connecting lines represent protein-protein interactions (STRING combined score > 0.7) within the network. Red nodes illustrate hypermethylated genes, whereas blue nodes indicate hypomethylated genes. Black lines enclose biologically relevant clusters identified by bioinformatic pathway enrichment analyses. DMGs – differentially methylated genes, L – *Lactobacillus reuteri*, P – placebo.

**Figure S2.**

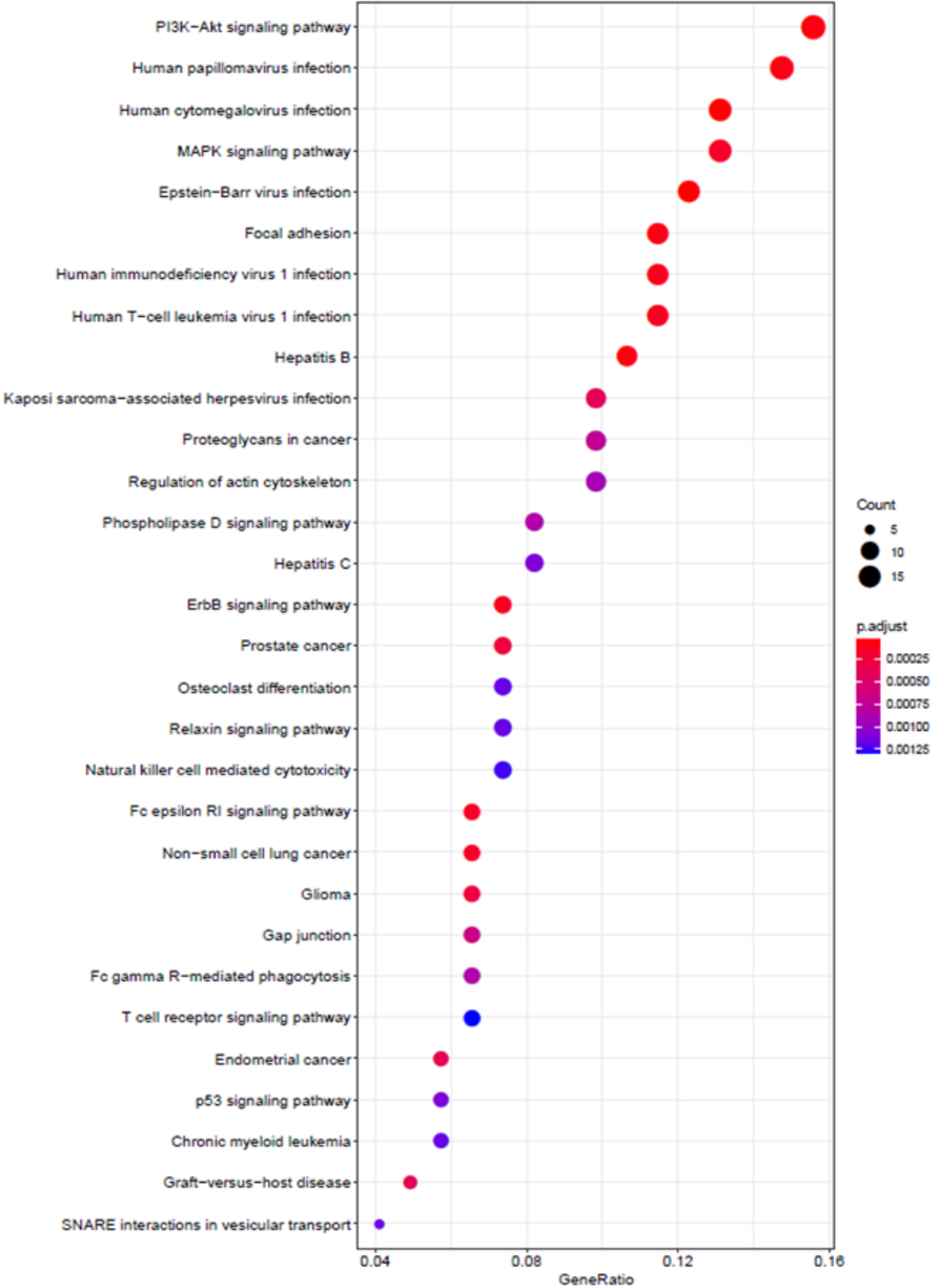
**P $\omega$  vs. PP**



**Figure S2.** Visualisation of the consensus module created with the DMGs from the differential methylation comparison between the single treated placebo/ $\omega$ -3 (P $\omega$ ) and the double placebo (PP) group. Nodes represent genes and connecting lines represent protein-protein interactions (STRING combined score > 0.7) within the network. Red nodes illustrate hypermethylated genes, blue nodes indicate hypomethylated genes and both colours denote mixed methylation patterns. Black lines enclose biologically relevant clusters identified by bioinformatic pathway enrichment analyses. DMGs – differentially methylated genes,  $\omega$  –  $\omega$ -3 fatty acids, P – placebo.

Figure S3.

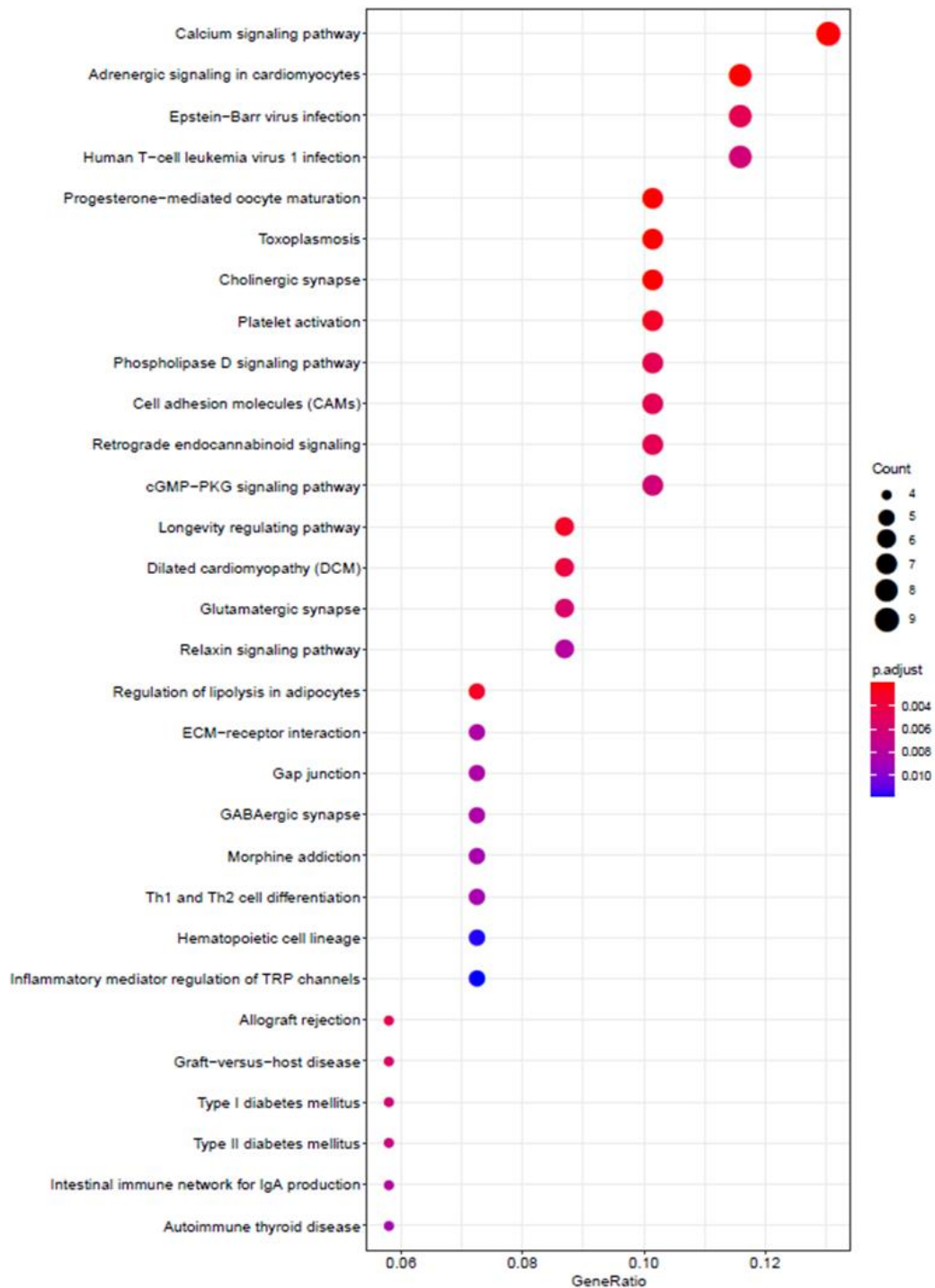
L $\omega$  vs. PP



**Figure S3.** A dot plot illustrating the enriched pathways obtained by including all module genes from the comparison between the double treated *L.reuteri* $\omega$ -3 (L $\omega$ ) and the double placebo (PP) group. The x-axis represents the gene ratio, the dot size corresponds to the gene count, and the red-purple gradient dot colour represents adjusted enrichment P-values for the top 30 corresponding pathways designated on the left-hand side of the graph. L – *Lactobacillus reuteri*,  $\omega$  –  $\omega$ -3 fatty acids, P – placebo.

Figure S4

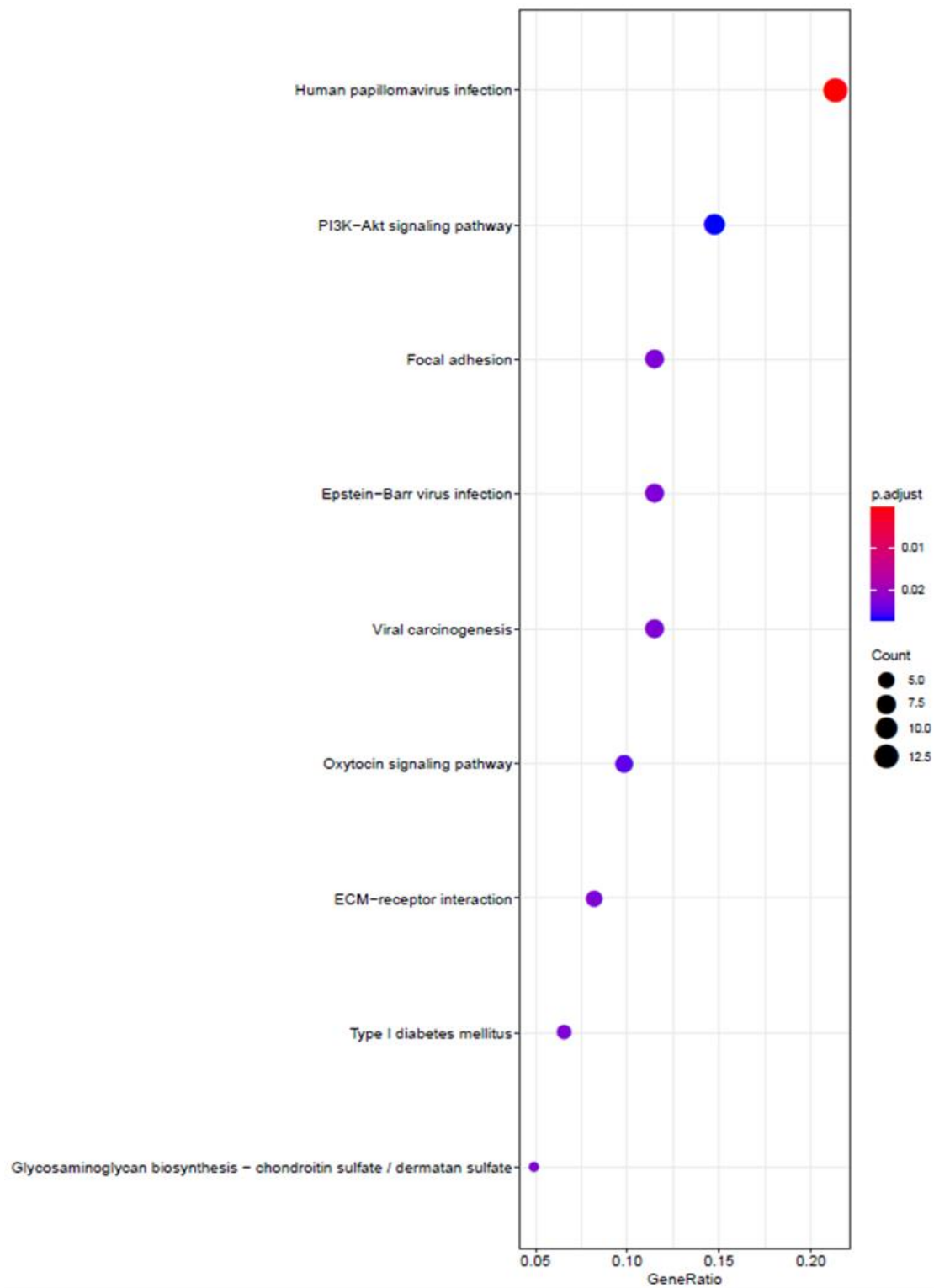
LP vs. PP



**Figure S4.** A dot plot illustrating the enriched pathways obtained by including all module genes from the comparison between the single treated *L.reuteri*/placebo (LP) and the double placebo (PP) group. The x-axis represents the gene ratio, the dot size corresponds to the gene count, and the red-purple gradient dot colour represents adjusted enrichment P-values for the top 30 corresponding pathways designated on the left-hand side of the graph. L – *Lactobacillus reuteri*,  $\omega$  –  $\omega$ -3 fatty acids, P – placebo.

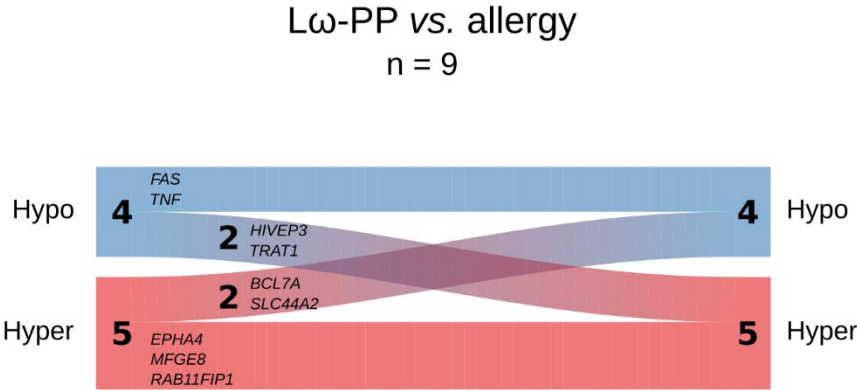
Figure S5.

### P $\omega$ vs. PP



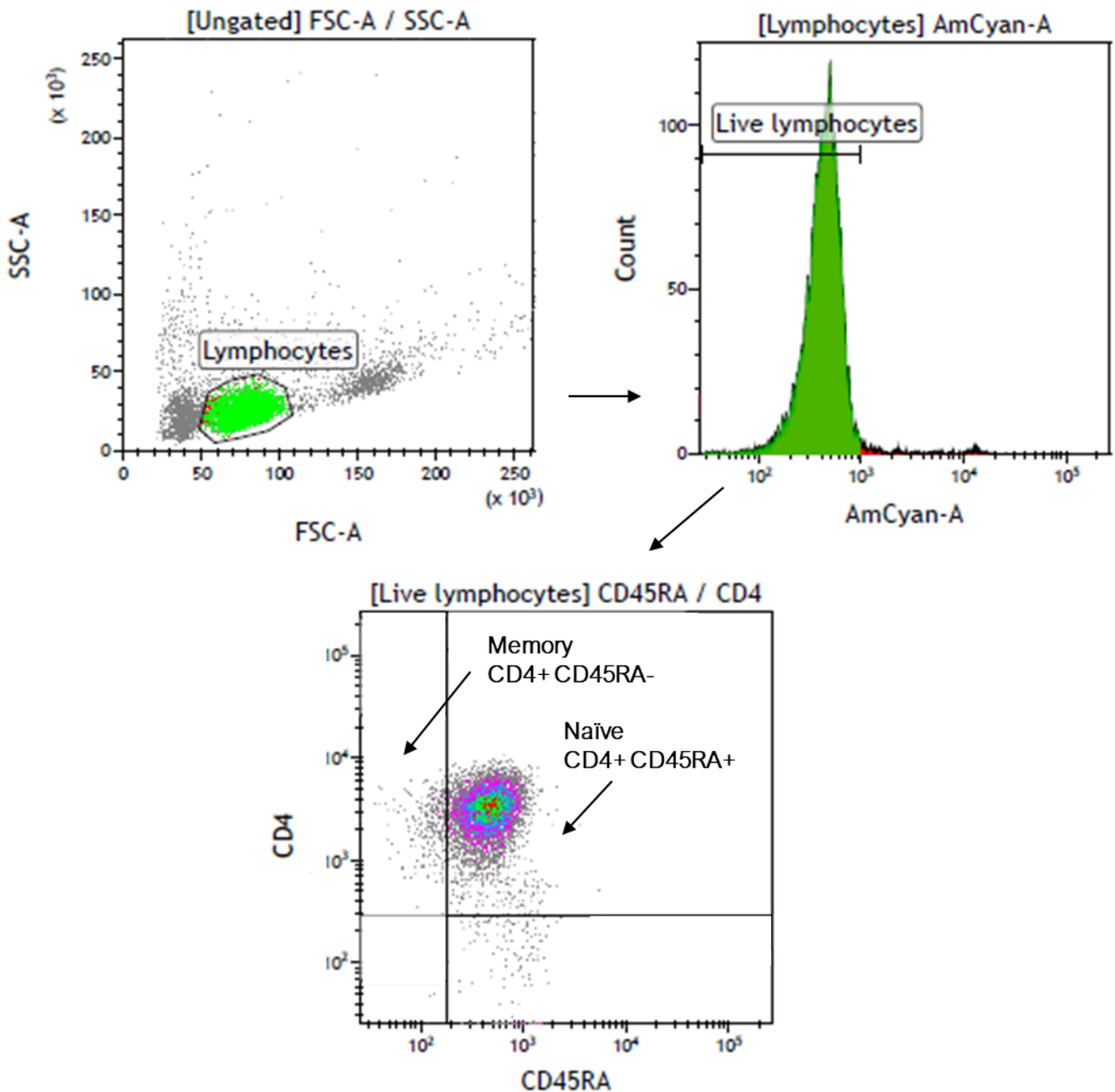
**Figure S5.** A dot plot illustrating the enriched pathways obtained by including all module genes from the comparison between the single treated placebo/ $\omega$ -3 (P $\omega$ ) and the double placebo (PP) group. The x-axis represents the gene ratio, the dot size corresponds to the gene count, and the red-purple gradient dot colour represents adjusted enrichment P-values for the corresponding pathways designated on the left-hand side of the graph. L – *Lactobacillus reuteri*,  $\omega$  –  $\omega$ -3 fatty acids, P – placebo.

Figure S6.



**Figure S6.** River plot illustrating the methylation status for overlapping genes being shared between the double-treated L $\omega$  group and the independent allergy data set. Genes are represented as flows of size proportional to number of genes within their methylation status in a particular set, and differences between sets are shown as connections between flows. The respective gene names are denoted next to each flow. Red represents hypermethylation and blue hypomethylation. The number of genes in the respective flows are denoted in the graph. L – Lactobacillus reuteri,  $\omega$  –  $\omega$ -3 fatty acids, P – placebo

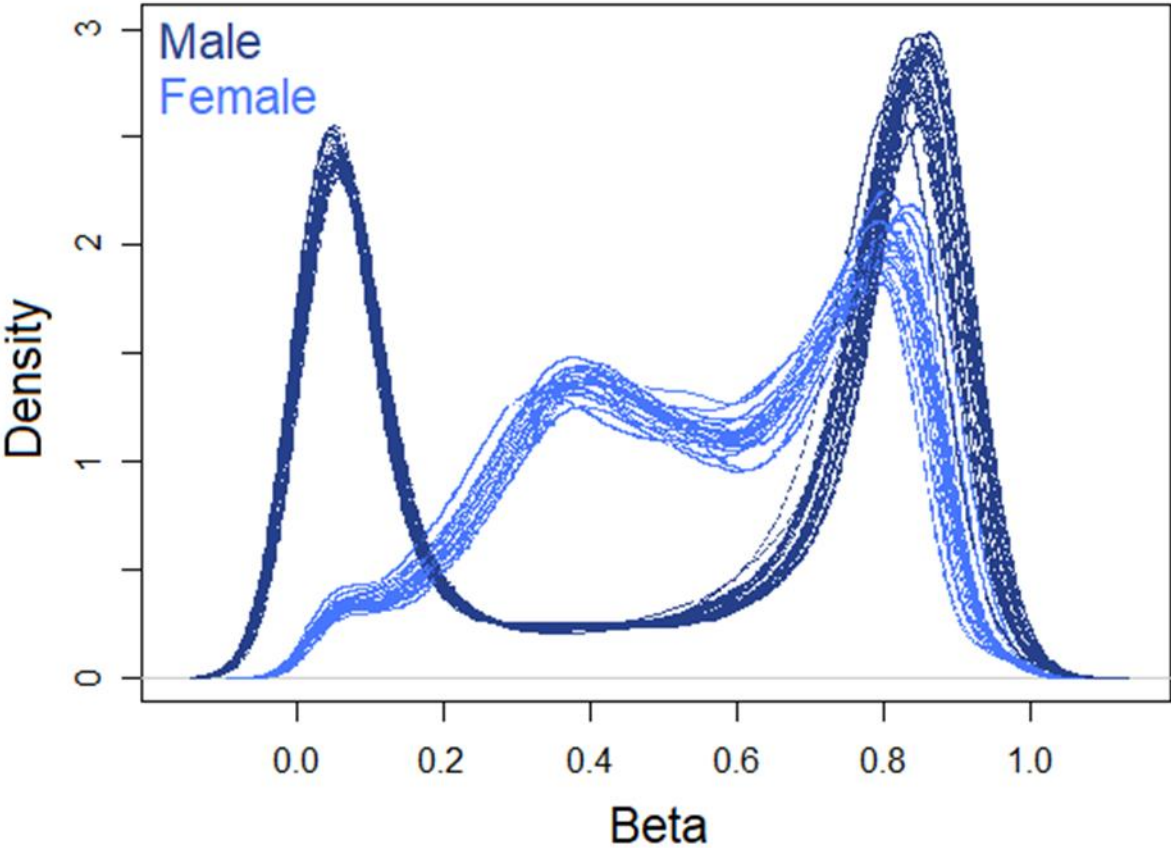
Figure S7.



**Figure S7.** Gating strategy for analysis of CD45RA<sup>±</sup> expression in CD4<sup>+</sup> cells from cord blood mononuclear cells. Lymphocytes were defined using the FSC and SSC features. Thereafter, live cells within the lymphocyte population were determined using Aqua LIVE/DEAD (AmCyan-A) staining, and further gated to distinguish naïve (CD4<sup>+</sup>/CD45RA<sup>+</sup>) from memory (CD4<sup>+</sup>CD45RA<sup>-</sup>) cells. FSC – forward scatter, SSC – side scatter.

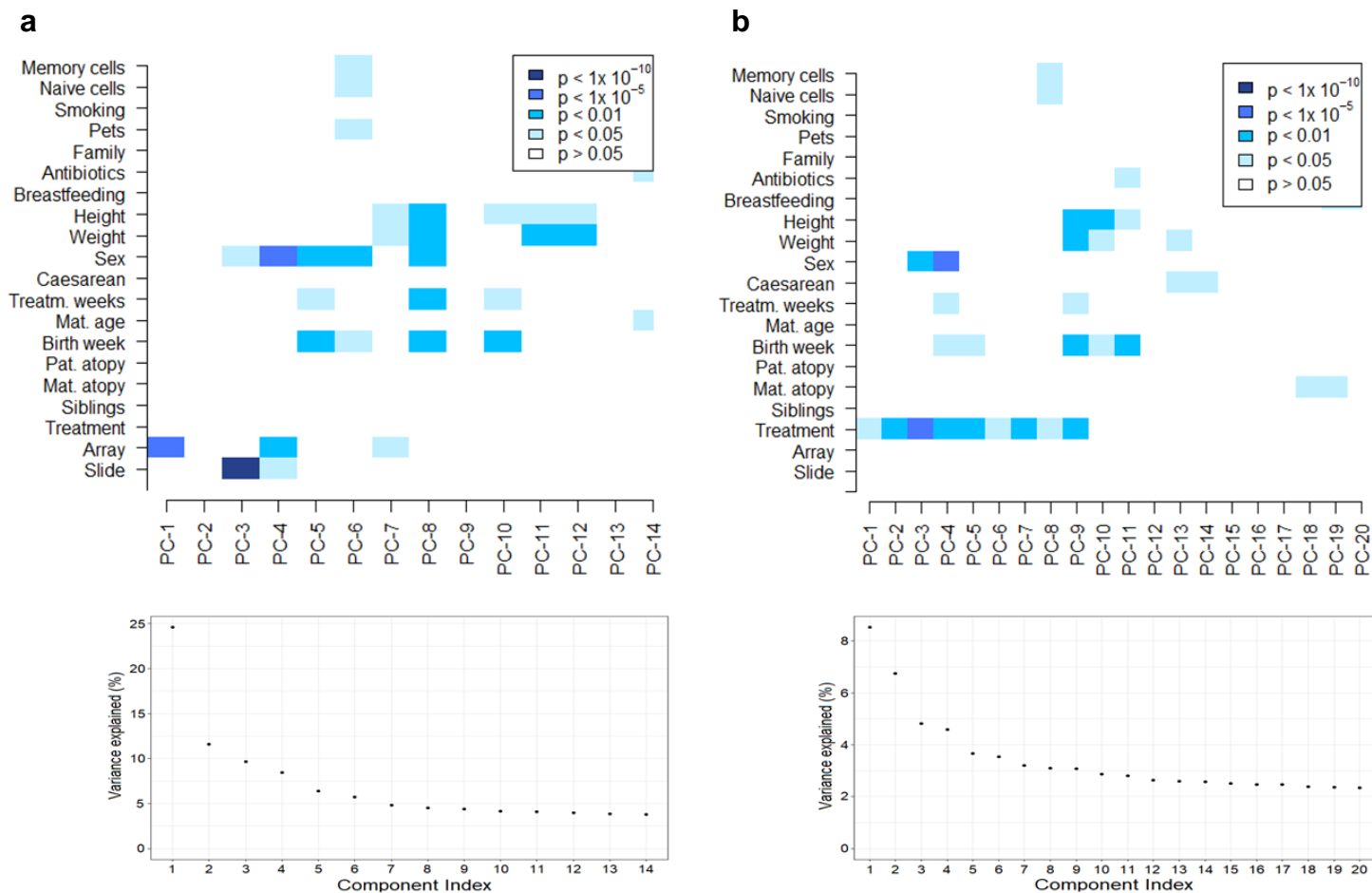


Figure S8.



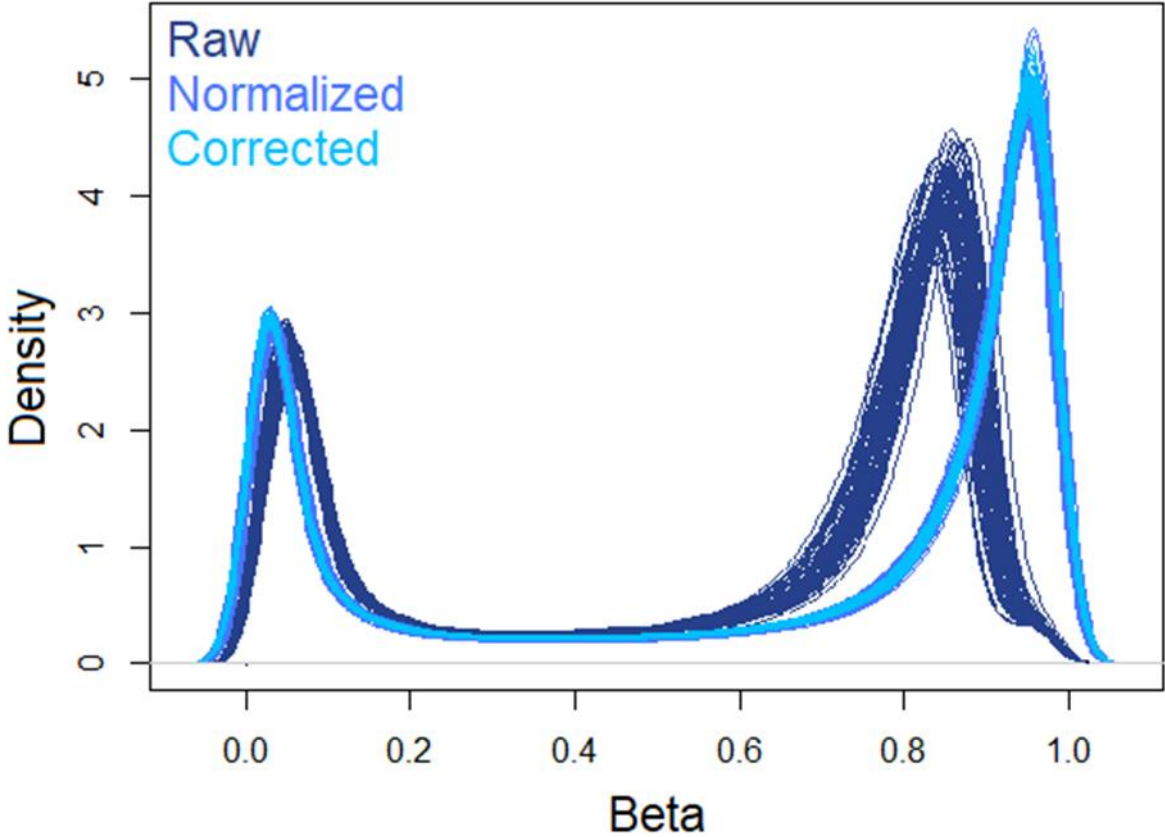
**Figure S8.** Graphical representation of the density of the beta value distribution on the X chromosomes of males and females in raw DNA methylation data. Male samples are illustrated in dark blue, females in light blue.

**Figure S9.**



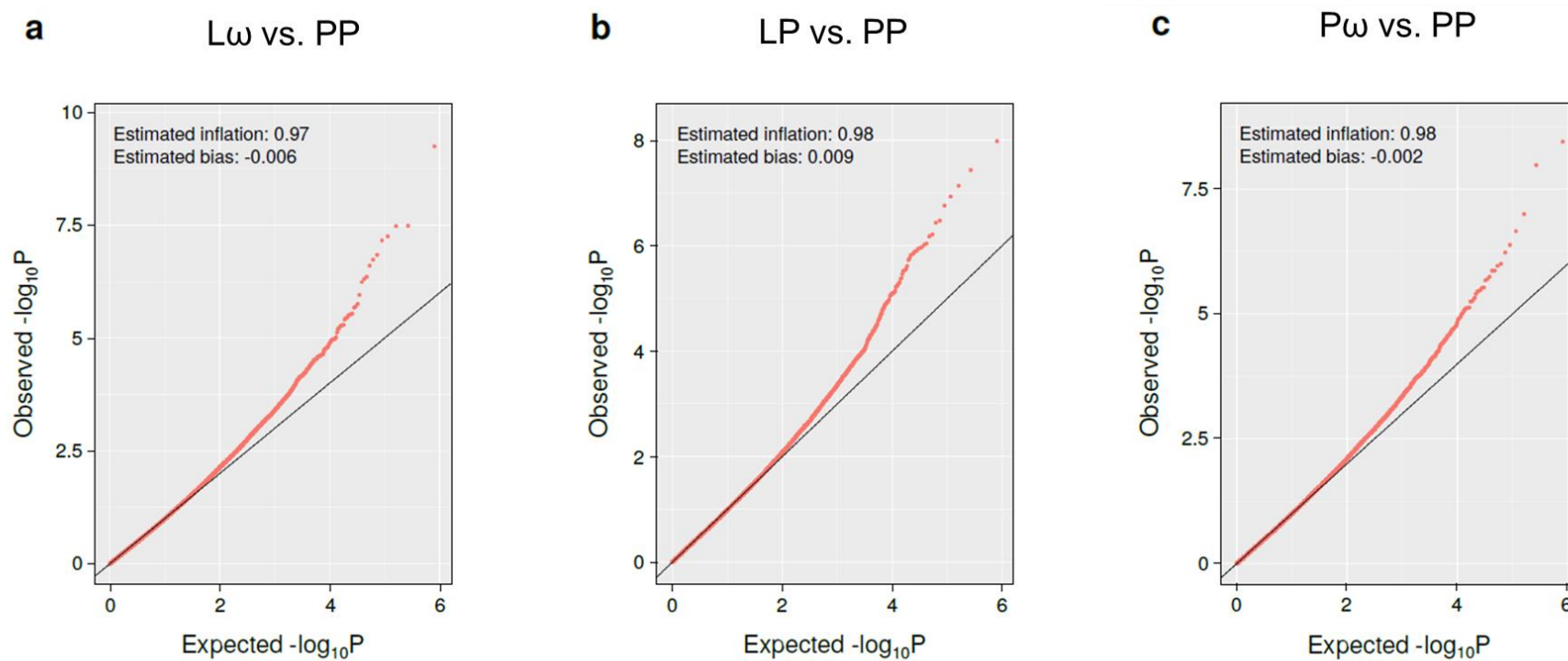
**Figure S9.** Graphical representations of Singular value decomposition (SVD) analyses for identification of major components of variation using the ChAMP package. Analyses on the filtered and BMIQ normalised data are displayed in panel a, and panel b shows the data upon correction for technical variables (array and slide). The lower panels present the % variance explained by each of the illustrated components in the SVD analyses. BMIQ – Beta Mixture Quantile.

Figure S10.



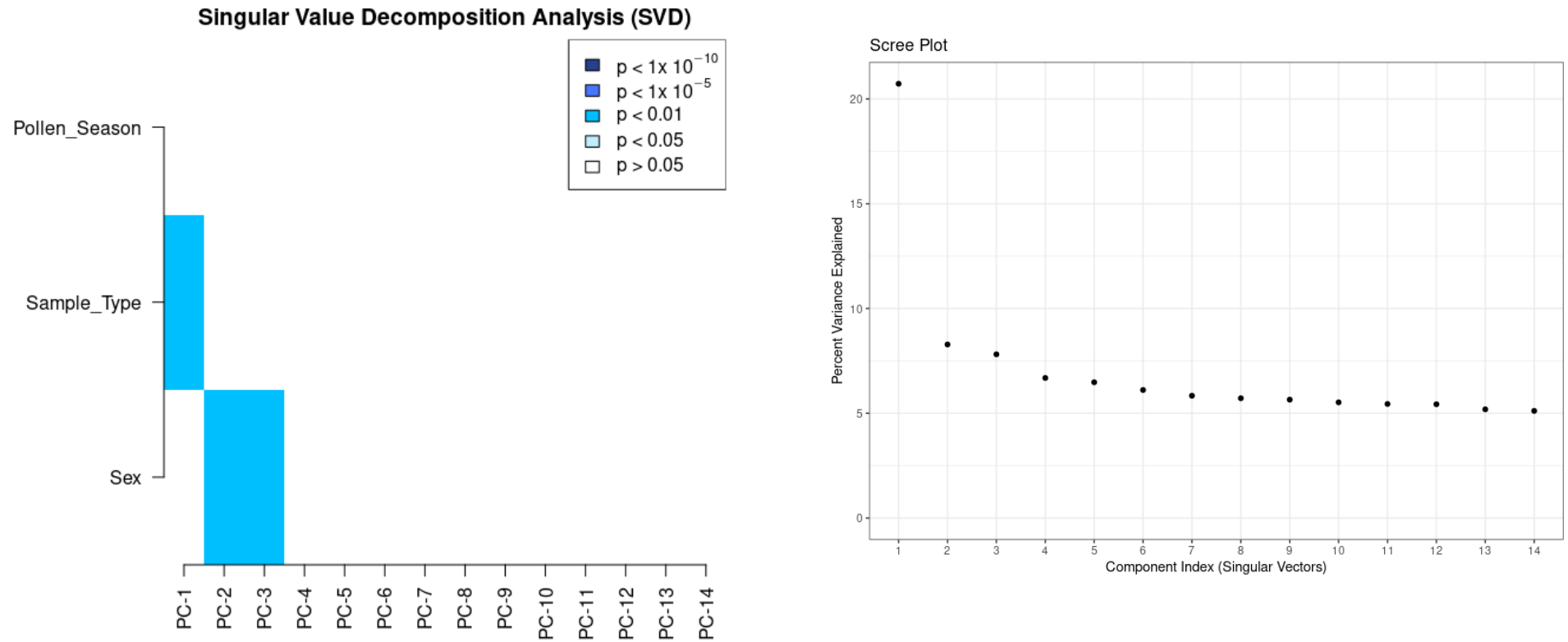
**Figure S10.** Graphical representation of the density of the beta value distribution on the autosomal chromosomes prior to and after normalisation and correction. Raw DNA methylation data are depicted in dark blue, BMIQ-normalised data in light blue and batch corrected data (using the ChAMP package in both cases) are illustrated in coral blue.

**Figure S11**



**Figure S11.** Plots illustrating the observed vs. expected  $-\log_{10}$  of the obtained p-values from each of the three differential DNA methylation comparisons, with accompanying estimated values of genomic inflation and bias. Calculations were performed using the R package BACON. L – *Lactobacillus reuteri*,  $\omega$  –  $\omega$ -3 fatty acids, P – placebo.

**Figure S12.**



**Figure S12.** Graphical representation of Singular value decomposition (SVD) analyses for identification of major components of variation using the ChAMP package in the independent allergy data set. Analyses on the pre-processed, filtered and BMIQ normalised data are displayed in panel A, showing the major components of variation in the data. Panel B shows the Scree plot illustrating corresponding percent variance explained for each principal component. BMIQ – Beta Mixture Quantile.

**Table S1.** Table of extracted differentially methylated CpGs (DMCs) with corresponding mean methylation difference (MMD) from the three treatment comparisons (L $\omega$ , LP and P $\omega$  vs. PP, respectively). DMCs were defined as having a MMD of  $> \pm 5\%$  along with an FDR-corrected p-value of  $< 0.1$ . L – *Lactobacillus reuteri*,  $\omega$  –  $\omega$ -3 fatty acids, P – placebo. Supplied in a separate file.

**Table S2.** Table of differentially methylated genes (DMGs) with corresponding direction of methylation from the three treatment comparisons (L $\omega$ , LP and P $\omega$ ). DMGs were defined as genes with at least one DMC, and the direction of methylation depended on the direction of methylation for all DMCs in the gene. Hypomethylation is defined as  $> -5\%$  mean methylation difference (MMD), hypermethylation as  $> +5\%$  MMD and mixed methylation genes contained DMCs of both directions. L – *Lactobacillus reuteri*,  $\omega$  –  $\omega$ -3 fatty acids, P – placebo. Supplied in a separate file.

**Table S4.** Table of pathways obtained from pathway enrichment analyses on DMCs from the L $\omega$  vs. PP comparison. Analyses were conducted using clusterProfiler R package and the KEGG PATHWAY database. Pathways with an adjusted p-value of 0.1 or lower were considered significantly relevant.

**Table S5.** Table of pathways obtained from pathway enrichment analyses on DMCs from the LP vs. PP comparison. Analyses were conducted using clusterProfiler R package and the KEGG PATHWAY database. Pathways with an adjusted p-value of 0.1 or lower were considered significantly relevant.

**Table S3.** Table of differentially methylated genes that were shared between the three treatment groups (L $\omega$ , LP and P $\omega$ ). L – *Lactobacillus reuteri*,  $\omega$  –  $\omega$ -3 fatty acids, P – placebo.

<b>Shared differentially methylated genes (n=72)</b>	
<i>FCRLB</i>	<i>SLC45A4</i>
<i>PTPRN2</i>	<i>NBL1</i>
<i>RPS6KA2</i>	<i>ZFR</i>
<i>RFPL2</i>	<i>HIVEP2</i>
<i>SYT17</i>	<i>NAV2</i>
<i>UNC45A</i>	<i>CSGALNACT1</i>
<i>ZSCAN12P1</i>	<i>KDM5B</i>
<i>PHF21A</i>	<i>B3GNT1</i>
<i>KIF26B</i>	<i>KCNG2</i>
<i>C1QL3</i>	<i>SCGB1A1</i>
<i>C17orf54</i>	<i>ZNF253</i>
<i>KRTAP12-3</i>	<i>MYOF</i>
<i>MAGI2</i>	<i>CEACAM7</i>
<i>CRISPLD2</i>	<i>CCDC162P</i>
<i>ZSCAN12L1</i>	<i>GRIK4</i>
<i>WNK4</i>	<i>MCTP1</i>
<i>SLC1A7</i>	<i>SYNPO2</i>
<i>NTNG1</i>	<i>OTX2-AS1</i>
<i>AGPAT3</i>	<i>IQGAP1</i>
<i>SLC35F3</i>	<i>REM2</i>
<i>PKNOX2</i>	<i>SORCS2</i>
<i>MICAL3</i>	<i>ITGB7</i>
<i>LGR6</i>	<i>RFTN1</i>
<i>OLFM1</i>	<i>DEFB115</i>
<i>C6orf123</i>	<i>ABI1</i>
<i>MIR548N</i>	<i>DGKG</i>
<i>CDH13</i>	<i>RUNX3</i>
<i>MX2</i>	<i>PLA2G4C</i>
<i>ZNF710</i>	<i>LOC101929241</i>
<i>LAMC1</i>	<i>CDC42BPA</i>
<i>FAM38A</i>	<i>NPHP1</i>
<i>CRTAC1</i>	<i>SORCS1</i>
<i>MIB2</i>	<i>MRGPRF</i>
<i>S100P</i>	<i>CRX</i>
<i>CD164</i>	<i>HLA-B</i>
<i>C10orf93</i>	<i>GP6</i>

**Table S6.** A table of module genes from the L $\omega$  comparison, displaying Entrez-ID, direction of methylation (hypo-, hyper- or mixed methylation), the number of connecting genes within network module and absolute mean methylation difference. L – *Lactobacillus reuteri*, MMD – mean methylation difference,  $\omega$  –  $\omega$ -3 fatty acids, P – placebo.

Module genes from the L $\omega$ comparison				
Gene symbol	Entrez	Direction of methylation	Degree of connectivity	Absolute MMD
<i>FYN</i>	2534	Hyper	16	0,071
<i>GNB5</i>	10681	Hyper	14	0,082
<i>SNAP23</i>	8773	Hyper	13	0,055
<i>LAMC1</i>	3915	Hyper	12	0,095
<i>IL6</i>	3569	Hypo	10	0,051
<i>RAF1</i>	5894	Hyper	10	0,055
<i>ADCY9</i>	115	Mixed	9	0,074
<i>CUL1</i>	8454	Hyper	9	0,056
<i>TNF</i>	7124	Hypo	9	0,053
<i>AP1M1</i>	8907	Hyper	8	0,063
<i>CREB1</i>	1385	Hypo	8	0,052
<i>GRB2</i>	2885	Hyper	8	0,059
<i>HMOX2</i>	3163	Hyper	8	0,059
<i>LPAR1</i>	1902	Hyper	8	0,074
<i>PAK1</i>	5058	Hyper	8	0,053
<i>PRKACB</i>	5567	Hypo	8	0,055
<i>SEC22B</i>	9554	Hypo	8	0,058
<i>CD47</i>	961	Hypo	7	0,068
<i>CDC23</i>	8697	Hypo	7	0,060
<i>ITGB5</i>	3693	Hyper	7	0,079
<i>KCNAB2</i>	8514	Hyper	7	0,090
<i>MAP2K7</i>	5609	Hyper	7	0,057
<i>PAK2</i>	5062	Hyper	7	0,060
<i>PRTN3</i>	5657	Hypo	7	0,176
<i>SDCBP</i>	6386	Hypo	7	0,052
<i>SLC2A3</i>	6515	Hypo	7	0,069
<i>SLC44A2</i>	57153	Hyper	7	0,051
<i>STK10</i>	6793	Hypo	7	0,086
<i>ADA2</i>	51816	Hypo	6	0,062
<i>AKT3</i>	10000	Hyper	6	0,051
<i>CDKN1A</i>	1026	Hyper	6	0,095
<i>CPPED1</i>	55313	Hyper	6	0,052
<i>CYB5R3</i>	1727	Hyper	6	0,061
<i>HTR2B</i>	3357	Hyper	6	0,054
<i>IST1</i>	9798	Hyper	6	0,052
<i>MAN2B1</i>	4125	Hypo	6	0,063
<i>MFGE8</i>	4240	Hyper	6	0,104
<i>PRKCA</i>	5578	Hyper	6	0,066
<i>SYK</i>	6850	Hyper	6	0,055
<i>ADRB3</i>	155	Hyper	5	0,089
<i>ATM</i>	472	Hypo	5	0,057



<i>CALCR</i>	799	Hypo	5	0,053
<i>EPHB3</i>	2049	Hyper	5	0,062
<i>FAM20C</i>	56975	Hyper	5	0,069
<i>FAS</i>	355	Hypo	5	0,059
<i>FSHR</i>	2492	Hyper	5	0,051
<i>GPR27</i>	2850	Hyper	5	0,138
<i>ITGA8</i>	8516	Hypo	5	0,062
<i>ITGB7</i>	3695	Hypo	5	0,051
<i>LTB4R2</i>	56413	Hyper	5	0,072
<i>NPFFR2</i>	10886	Hypo	5	0,053
<i>PDIA6</i>	10130	Hyper	5	0,079
<i>PROK2</i>	60675	Hyper	5	0,108
<i>RCHY1</i>	25898	Hyper	5	0,058
<i>RING1</i>	6015	Hyper	5	0,053
<i>UBE2I</i>	7329	Hyper	5	0,061
<i>WFS1</i>	7466	Hyper	5	0,052
<i>AGRN</i>	375790	Hypo	4	0,059
<i>ARFGAP3</i>	26286	Hyper	4	0,052
<i>ASB10</i>	136371	Hyper	4	0,054
<i>CCL16</i>	6360	Hyper	4	0,069
<i>CEACAM7</i>	1087	Hyper	4	0,068
<i>ERBB4</i>	2066	Hyper	4	0,054
<i>FBXL7</i>	23194	Hyper	4	0,056
<i>GPR31</i>	2853	Hyper	4	0,056
<i>HLA-DRB1</i>	3123	Hyper	4	0,222
<i>KIF16B</i>	55614	Hyper	4	0,076
<i>KIF25</i>	3834	Hypo	4	0,063
<i>KIF26B</i>	55083	Hyper	4	0,063
<i>MDGA1</i>	266727	Hyper	4	0,109
<i>NTNG1</i>	22854	Hypo	4	0,074
<i>OPCML</i>	4978	Hypo	4	0,132
<i>PGR</i>	5241	Hyper	4	0,050
<i>PSCA</i>	8000	Hyper	4	0,052
<i>RB1</i>	5925	Hyper	4	0,100
<i>RUNX1</i>	861	Hypo	4	0,054
<i>TP73</i>	7161	Hyper	4	0,056
<i>ACTN4</i>	81	Hyper	3	0,055
<i>AXIN1</i>	8312	Hyper	3	0,080
<i>CASP9</i>	842	Hypo	3	0,065
<i>EED</i>	8726	Hypo	3	0,067
<i>ERCC4</i>	2072	Hyper	3	0,051
<i>HLA-B</i>	3106	Hyper	3	0,262
<i>ITGAE</i>	3682	Hyper	3	0,059
<i>MRPS2</i>	51116	Hyper	3	0,054
<i>MUC17</i>	140453	Hyper	3	0,055
<i>RPS25</i>	6230	Hyper	3	0,051
<i>AKAP9</i>	10142	Hyper	2	0,062
<i>ATG5</i>	9474	Hypo	2	0,053
<i>BET1L</i>	51272	Hyper	2	0,069

<i>CRNKL1</i>	51340	Hyper	2	0,056
<i>DAB1</i>	1600	Hyper	2	0,066
<i>DDB2</i>	1643	Hyper	2	0,052
<i>EPHA4</i>	2043	Hyper	2	0,092
<i>EPS15L1</i>	58513	Hyper	2	0,076
<i>GLI2</i>	2736	Hyper	2	0,060
<i>GP6</i>	51206	Hyper	2	0,060
<i>HLA-DOB</i>	3112	Hyper	2	0,058
<i>HNRNPM</i>	4670	Hyper	2	0,083
<i>HTR3A</i>	3359	Hypo	2	0,086
<i>LDLRAP1</i>	26119	Hyper	2	0,057
<i>MRPL28</i>	10573	Hyper	2	0,157
<i>MRPL51</i>	51258	Hyper	2	0,065
<i>PDGFRA</i>	5156	Hyper	2	0,052
<i>PHF21A</i>	51317	Hyper	2	0,067
<i>RELB</i>	5971	Hyper	2	0,104
<i>RHOH</i>	399	Hyper	2	0,110
<i>RHOJ</i>	57381	Hyper	2	0,055
<i>RHOT1</i>	55288	Hyper	2	0,064
<i>RUNX3</i>	864	Hyper	2	0,163
<i>SALL4</i>	57167	Hyper	2	0,063
<i>SGIP1</i>	84251	Hypo	2	0,069
<i>STX19</i>	415117	Hypo	2	0,051
<i>STX2</i>	2054	Hypo	2	0,061
<i>TRPC6</i>	7225	Hyper	2	0,077
<i>WDR33</i>	55339	Hyper	2	0,113
<i>AGO2</i>	27161	Hyper	1	0,054
<i>ASAP1</i>	50807	Hyper	1	0,052
<i>ASAP2</i>	8853	Hyper	1	0,050
<i>ATG101</i>	60673	Hyper	1	0,076
<i>ATG4C</i>	84938	Hyper	1	0,052
<i>BCL7A</i>	605	Hyper	1	0,058
<i>BRD7</i>	29117	Mixed	1	0,072
<i>CACNA1A</i>	773	Hyper	1	0,066
<i>CDH12</i>	1010	Hypo	1	0,073
<i>CDH13</i>	1012	Hyper	1	0,087
<i>CHSY1</i>	22856	Hypo	1	0,093
<i>CLOCK</i>	9575	Hypo	1	0,055
<i>CSGALNACT1</i>	55790	Hypo	1	0,091
<i>EEF1A2</i>	1917	Hyper	1	0,054
<i>EIF3E</i>	3646	Hypo	1	0,068
<i>ELL</i>	8178	Hyper	1	0,081
<i>FGFR2</i>	2263	Hyper	1	0,174
<i>GALNT13</i>	114805	Mixed	1	0,055
<i>GALNT7</i>	51809	Hyper	1	0,053
<i>GALNT9</i>	50614	Hypo	1	0,060
<i>HOXB6</i>	3216	Hypo	1	0,073
<i>HOXC4</i>	3221	Hyper	1	0,068
<i>IDI1</i>	3422	Hypo	1	0,075

<i>INSIG1</i>	3638	Hyper	1	0,072
<i>MAP4K3</i>	8491	Hypo	1	0,058
<i>MEIS1</i>	4211	Hypo	1	0,058
<i>MYO5A</i>	4644	Hyper	1	0,060
<i>NPAS2</i>	4862	Hyper	1	0,061
<i>NSUN2</i>	54888	Hypo	1	0,079
<i>POLR1B</i>	84172	Hyper	1	0,055
<i>PPP2R2C</i>	5522	Hypo	1	0,065
<i>SCNN1A</i>	6337	Hyper	1	0,054
<i>TANK</i>	10010	Hypo	1	0,071
<i>TMPRSS6</i>	164656	Hypo	1	0,062
<i>TNIK</i>	23043	Hypo	1	0,061
<i>TRAT1</i>	50852	Hypo	1	0,051
<i>WNT3A</i>	89780	Hyper	1	0,062
<i>ALDH1A1</i>	216	Hypo	0	0,050
<i>C9ORF47</i>	286223	Hyper	0	0,074
<i>DSE</i>	29940	Hyper	0	0,059
<i>EXOC6B</i>	23233	Hypo	0	0,063
<i>HIVEP3</i>	59269	Hypo	0	0,050
<i>INPP5A</i>	3632	Hyper	0	0,164
<i>LOR</i>	4014	Hypo	0	0,097
<i>LOX</i>	4015	Hypo	0	0,097
<i>LTF</i>	4057	Hyper	0	0,062
<i>MKLN1</i>	4289	Hypo	0	0,053
<i>OS9</i>	10956	Hyper	0	0,060
<i>PIP5K1B</i>	8395	Hyper	0	0,060
<i>PRICKLE1</i>	144165	Hyper	0	0,063
<i>RAB11FIP1</i>	80223	Hyper	0	0,077
<i>RARRES2</i>	5919	Hyper	0	0,054
<i>RTN4</i>	57142	Hyper	0	0,057
<i>SKA2</i>	348235	Hyper	0	0,068

**Table S7.** A table of module genes from the LP comparison, displaying Entrez-ID, direction of methylation (hypo-, hyper- or mixed methylation), the number of connecting genes within network module and absolute mean methylation difference. L – *Lactobacillus reuteri*, MMD – mean methylation difference, P – placebo.

Module genes from the LP comparison				
Gene symbol	Entrez	Direction of methylation	Degree of connectivity	Absolute MMD
<i>ADCY7</i>	113	Hypo	11	0,079
<i>ADCY9</i>	115	Hyper	11	0,058
<i>AGTR1</i>	185	Hyper	9	0,054
<i>GALR1</i>	2587	Hypo	9	0,069
<i>GNAI1</i>	2770	Hyper	9	0,080
<i>GPR37</i>	2861	Hyper	9	0,053
<i>GRM7</i>	2917	Hyper	9	0,058
<i>CCL20</i>	6364	Hyper	8	0,067
<i>GPR183</i>	1880	Hyper	8	0,051
<i>GPR31</i>	2853	Hyper	8	0,059
<i>PIK3R3</i>	8503	Hypo	8	0,051
<i>GRM5</i>	2915	Hyper	7	0,061
<i>ADRA1A</i>	148	Hyper	6	0,052
<i>HCRTR2</i>	3062	Hyper	6	0,065
<i>HTR2B</i>	3357	Hyper	6	0,074
<i>LAMC1</i>	3915	Hyper	6	0,063
<i>PROK2</i>	60675	Hypo	6	0,052
<i>HLA-DPB1</i>	3115	Hyper	5	0,062
<i>HLA-DQA1</i>	3117	Hyper	5	0,359
<i>KIF2A</i>	3796	Hypo	5	0,052
<i>HLA-DMB</i>	3109	Hyper	4	0,064
<i>ITGA1</i>	3672	Hypo	4	0,053
<i>ADRB3</i>	155	Hyper	3	0,100
<i>ATP11A</i>	23250	Hyper	3	0,057
<i>CEACAM7</i>	1087	Hyper	3	0,063
<i>DNM3</i>	26052	Hyper	3	0,056
<i>HLA-B</i>	3106	Hyper	3	0,064
<i>ITGB4</i>	3691	Hyper	3	0,055
<i>ITGB7</i>	3695	Hyper	3	0,057
<i>LY6K</i>	54742	Hyper	3	0,052
<i>NTM</i>	50863	Hyper	3	0,053
<i>NTNG1</i>	22854	Hypo	3	0,063
<i>PRKAR1B</i>	5575	Hypo	3	0,061
<i>RAB44</i>	401258	Hyper	3	0,060
<i>SLC2A3</i>	6515	Hypo	3	0,068
<i>STK10</i>	6793	Hypo	3	0,065
<i>ARSA</i>	410	Hypo	2	0,058
<i>CACNA1A</i>	773	Hyper	2	0,080
<i>CACNA1B</i>	774	Hypo	2	0,051

<i>CACNA2D3</i>	55799	Hyper	2	0,053
<i>CYB5R3</i>	1727	Hyper	2	0,069
<i>EIF4E</i>	1977	Hyper	2	0,077
<i>MAPK11</i>	5600	Hyper	2	0,052
<i>NCBP2</i>	22916	Hyper	2	0,054
<i>PDIA6</i>	10130	Hyper	2	0,057
<i>PPARGC1A</i>	10891	Hyper	2	0,052
<i>PRKCZ</i>	5590	Hyper	2	0,071
<i>PRTN3</i>	5657	Hypo	2	0,129
<i>WFS1</i>	7466	Hyper	2	0,051
<i>CCNB1</i>	891	Hyper	1	0,068
<i>CLOCK</i>	9575	Hypo	1	0,059
<i>CSNK2A1</i>	1457	Hypo	1	0,067
<i>ENTPD3</i>	956	Hyper	1	0,058
<i>FOLR1</i>	2348	Hypo	1	0,051
<i>GP6</i>	51206	Hyper	1	0,066
<i>GPC5</i>	2262	Hyper	1	0,064
<i>KCNQ1</i>	3784	Hyper	1	0,057
<i>KIF26B</i>	55083	Hypo	1	0,069
<i>PHF21A</i>	51317	Hyper	1	0,073
<i>PSMA1</i>	5682	Hypo	1	0,062
<i>RUNX3</i>	864	Hyper	1	0,128
<i>SNRPB2</i>	6629	Hyper	1	0,051
<i>TMPRSS6</i>	164656	Hypo	1	0,067
<i>TNFRSF1A</i>	7132	Hypo	1	0,068
<i>TRAPPC9</i>	83696	Hypo	1	0,127
<i>XYLT1</i>	64131	Hypo	1	0,052
<i>ADAM22</i>	53616	Hyper	0	0,059
<i>ASAP1</i>	50807	Hyper	0	0,050
<i>C2CD5</i>	9847	Hypo	0	0,064
<i>CBFA2T3</i>	863	Hypo	0	0,060
<i>CD1A</i>	909	Hypo	0	0,076
<i>CDH13</i>	1012	Hyper	0	0,091
<i>CLDN15</i>	24146	Hypo	0	0,061
<i>CPS1</i>	1373	Hyper	0	0,054
<i>CSGALNACT1</i>	55790	Mixed	0	0,133
<i>CTTNBP2</i>	83992	Hyper	0	0,066
<i>CUX1</i>	1523	Hyper	0	0,105
<i>DSC3</i>	1825	Hyper	0	0,068
<i>GALNT7</i>	51809	Hyper	0	0,099
<i>GALNT9</i>	50614	Hyper	0	0,051
<i>GALNTL6</i>	442117	Hypo	0	0,052
<i>HOXA5</i>	3202	Hypo	0	0,061
<i>IDO1</i>	3620	Hyper	0	0,051
<i>INSIG1</i>	3638	Hyper	0	0,060
<i>KDM2B</i>	84678	Hypo	0	0,058

<i>KRT84</i>	3890	Hypo	0	0,085
<i>MKLN1</i>	4289	Hyper	0	0,060
<i>MRPL48</i>	51642	Hyper	0	0,066
<i>PARP1</i>	142	Hypo	0	0,067
<i>PRSS3</i>	5646	Hyper	0	0,057
<i>RAD51B</i>	5890	Hyper	0	0,070
<i>RB1CC1</i>	9821	Hypo	0	0,056
<i>RCHY1</i>	25898	Hyper	0	0,051
<i>RHOH</i>	399	Hyper	0	0,098
<i>ROR2</i>	4920	Hyper	0	0,080
<i>RTN4</i>	57142	Hypo	0	0,055
<i>THEMIS</i>	387357	Hyper	0	0,051
<i>TRPC6</i>	7225	Hyper	0	0,074
<i>USH2A</i>	7399	Hyper	0	0,053
<i>WWTR1</i>	25937	Hyper	0	0,060

**Table S8.** A table of module genes from the P $\omega$  comparison, displaying Entrez-ID, direction of methylation (hypo-, hyper- or mixed methylation), the number of connecting genes within network module and absolute mean methylation difference.  $\omega$  –  $\omega$ -3 fatty acids, MMD – mean methylation difference, P – placebo.

<b>Module genes from the P<math>\omega</math> comparison</b>				
<b>Gene symbol</b>	<b>Entrez</b>	<b>Direction of methylation</b>	<b>Degree of connectivity</b>	<b>Absolute MMD</b>
<i>PSMD14</i>	10213	Hyper	9	0,052
<i>CCNB1</i>	891	Hyper	6	0,057
<i>CDKN1A</i>	1026	Hyper	6	0,134
<i>ESR1</i>	2099	Hyper	6	0,057
<i>LAMC1</i>	3915	Mixed	6	0,089
<i>EZH2</i>	2146	Hypo	5	0,056
<i>ITGB4</i>	3691	Hyper	5	0,053
<i>GRB2</i>	2885	Hypo	4	0,053
<i>LAMB2</i>	3913	Hyper	4	0,072
<i>PRKACB</i>	5567	Hypo	4	0,054
<i>TNFRSF1B</i>	7133	Hyper	4	0,078
<i>CD59</i>	966	Hyper	3	0,085
<i>CDC26</i>	246184	Hyper	3	0,054
<i>CDH11</i>	1009	Hyper	3	0,054
<i>CDH12</i>	1010	Mixed	3	0,074
<i>CDH13</i>	1012	Mixed	3	0,084
<i>CDH24</i>	64403	Hyper	3	0,051
<i>FANCI</i>	55215	Hypo	3	0,051
<i>KCNQ1</i>	3784	Hyper	3	0,056
<i>PAK2</i>	5062	Hyper	3	0,059
<i>RUNX3</i>	864	Hyper	3	0,168
<i>ATP8B4</i>	79895	Mixed	2	0,130
<i>CEACAM7</i>	1087	Hyper	2	0,072
<i>COL18A1</i>	80781	Hyper	2	0,086
<i>COL4A2</i>	1284	Hypo	2	0,090
<i>FAAP20</i>	199990	Hyper	2	0,056
<i>FANCA</i>	2175	Hypo	2	0,056
<i>HLA-B</i>	3106	Hyper	2	0,077
<i>HLA-C</i>	3107	Hyper	2	0,087
<i>HLA-G</i>	3135	Hyper	2	0,054
<i>IGFBP7</i>	3490	Hypo	2	0,050
<i>ITGB7</i>	3695	Hypo	2	0,063
<i>KIF18B</i>	146909	Hypo	2	0,052
<i>LIMD1</i>	8994	Hyper	2	0,086
<i>NOS3</i>	4846	Hypo	2	0,059
<i>NTNG1</i>	22854	Hypo	2	0,059
<i>OPCML</i>	4978	Mixed	2	0,134
<i>PPP2R5C</i>	5527	Hypo	2	0,054
<i>TNFSF14</i>	8740	Hyper	2	0,122

<i>ADRA1A</i>	148	Hyper	1	0,050
<i>ALDH1A1</i>	216	Hypo	1	0,052
<i>ATG101</i>	60673	Hyper	1	0,101
<i>CAMK1G</i>	57172	Hyper	1	0,120
<i>CCL16</i>	6360	Hyper	1	0,094
<i>CDKAL1</i>	54901	Hypo	1	0,059
<i>EXOC2</i>	55770	Hyper	1	0,050
<i>GAD1</i>	2571	Hyper	1	0,068
<i>GRIN2B</i>	2904	Hypo	1	0,055
<i>HDAC7</i>	51564	Hypo	1	0,050
<i>INPP5D</i>	3635	Hypo	1	0,055
<i>KCNAB1</i>	7881	Hyper	1	0,052
<i>KIF26B</i>	55083	Hyper	1	0,058
<i>LATS1</i>	9113	Hypo	1	0,067
<i>MEIS1</i>	4211	Hypo	1	0,057
<i>MYO5A</i>	4644	Hyper	1	0,082
<i>OAZ3</i>	51686	Hyper	1	0,055
<i>P2RY12</i>	64805	Hyper	1	0,061
<i>PRKAG2</i>	51422	Hypo	1	0,070
<i>SPTBN1</i>	6711	Hypo	1	0,063
<i>TRIO</i>	7204	Hypo	1	0,068
<i>ADGRV1</i>	84059	Hyper	0	0,053
<i>APC2</i>	10297	Hyper	0	0,061
<i>BIVM-ERCC5</i>	100533467	Hyper	0	0,059
<i>C9ORF47</i>	286223	Hyper	0	0,087
<i>CACNG1</i>	786	Hyper	0	0,053
<i>CBFA2T3</i>	863	Hypo	0	0,080
<i>CELSR1</i>	9620	Hyper	0	0,103
<i>CHST11</i>	50515	Hypo	0	0,074
<i>COX6A2</i>	1339	Hypo	0	0,073
<i>CPA1</i>	1357	Hyper	0	0,062
<i>CSGALNACT1</i>	55790	Hypo	0	0,102
<i>CXXC1</i>	30827	Hyper	0	0,056
<i>CYP51A1</i>	1595	Hypo	0	0,052
<i>DSC3</i>	1825	Hyper	0	0,065
<i>ENTPD3</i>	956	Hyper	0	0,066
<i>GALNT13</i>	114805	Hypo	0	0,065
<i>GALNTL6</i>	442117	Hyper	0	0,139
<i>GULP1</i>	51454	Hypo	0	0,051
<i>MAEA</i>	10296	Hypo	0	0,081
<i>OS9</i>	10956	Hyper	0	0,059
<i>PDHX</i>	8050	Hyper	0	0,067
<i>PHF21A</i>	51317	Hyper	0	0,062
<i>PIGQ</i>	9091	Hyper	0	0,090
<i>ROR2</i>	4920	Hyper	0	0,093
<i>RPL27A</i>	6157	Hyper	0	0,064



<i>SPG7</i>	6687	Hypo	0	0,078
<i>XYLT1</i>	64131	Hypo	0	0,067

**Table S9.** Lists of shared DMGs from the network analyses, and their corresponding direction of methylation. DMGs were defined as genes with at least one DMC, and the direction of methylation depended on the direction of methylation for all DMCs in the gene. Hypomethylation is defined as > -5% mean methylation difference (MMD), hypermethylation as > +5% MMD and mixed methylation genes contained DMPs of both directions. DMG – differentially methylated gene, DMC – differentially methylated CpG, L – *Lactobacillus reuteri*, MMD – mean methylation difference,  $\omega$  –  $\omega$ -3 fatty acids, P – placebo.

	Group comparison		
Gene symbol	L $\omega$ -PP	LP-PP	P $\omega$ -PP
<i>CDH13</i>	Hyper	Hyper	Mixed
<i>CEACAM7</i>	Hyper	Hyper	Hyper
<i>CSGALNACT1</i>	Hypo	Mixed	Hypo
<i>HLA-B</i>	Hyper	Hyper	Hyper
<i>ITGB7</i>	Hypo	Hyper	Hypo
<i>KIF26B</i>	Hyper	Hypo	Hyper
<i>LAMC1</i>	Hyper	Hyper	Mixed
<i>NTNG1</i>	Hypo	Hypo	Hypo
<i>PHF21A</i>	Hyper	Hyper	Hyper
<i>RUNX3</i>	Hyper	Hyper	Hyper
	Group comparison		
Gene symbol	L $\omega$ -PP	LP-PP	
<i>ADCY9</i>	Mixed	Hyper	
<i>ADRB3</i>	Hyper	Hyper	
<i>ASAP1</i>	Hyper	Hyper	
<i>CACNA1A</i>	Hyper	Hyper	
<i>CLOCK</i>	Hypo	Hypo	
<i>CYB5R3</i>	Hyper	Hyper	
<i>GALNT7</i>	Hyper	Hyper	
<i>GALNT9</i>	Hypo	Hyper	
<i>GP6</i>	Hyper	Hyper	
<i>GPR31</i>	Hyper	Hyper	
<i>HTR2B</i>	Hyper	Hyper	
<i>INSIG1</i>	Hyper	Hyper	
<i>MKLN1</i>	Hypo	Hyper	
<i>PDIA6</i>	Hyper	Hyper	
<i>PROK2</i>	Hyper	Hypo	
<i>PRTN3</i>	Hypo	Hypo	
<i>RCHY1</i>	Hyper	Hyper	
<i>RHOH</i>	Hyper	Hyper	
<i>RTN4</i>	Hyper	Hypo	
<i>SLC2A3</i>	Hypo	Hypo	
<i>STK10</i>	Hypo	Hypo	
<i>TMPRSS6</i>	Hypo	Hypo	
<i>TRPC6</i>	Hyper	Hyper	
<i>WFS1</i>	Hyper	Hyper	

	<b>Group comparison</b>		
<b>Gene symbol</b>	<b>Lω-PP</b>	<b>Pω-PP</b>	
<i>ALDH1A1</i>	Hypo	Hypo	
<i>ATG101</i>	Hyper	Hyper	
<i>C9orf47</i>	Hyper	Hyper	
<i>CCL16</i>	Hyper	Hyper	
<i>CDH12</i>	Hypo	Mixed	
<i>CDKN1A</i>	Hyper	Hyper	
<i>GALNT13</i>	Mixed	Hypo	
<i>GRB2</i>	Hyper	Hypo	
<i>MEIS1</i>	Hypo	Hypo	
<i>MYO5A</i>	Hyper	Hyper	
<i>OPCML</i>	Hypo	Mixed	
<i>OS9</i>	Hyper	Hyper	
<i>PAK2</i>	Hyper	Hyper	
<i>PRKACB</i>	Hypo	Hypo	
	<b>Group comparison</b>		
<b>Gene symbol</b>	<b>LP-PP</b>	<b>Pω-PP</b>	
<i>ADRA1A</i>	Hyper	Hyper	
<i>CBFA2T3</i>	Hypo	Hypo	
<i>CCNB1</i>	Hyper	Hyper	
<i>DSC3</i>	Hyper	Hyper	
<i>ENTPD3</i>	Hyper	Hyper	
<i>GALNTL6</i>	Hypo	Hyper	
<i>ITGB4</i>	Hyper	Hyper	
<i>KCNQ1</i>	Hyper	Hyper	
<i>ROR2</i>	Hyper	Hyper	
<i>XYLT1</i>	Hypo	Hypo	

**Table S10.** A table of genes overlapping between comparisons of DMCs in differential DNA methylation analyses (L $\omega$ , LP and P $\omega$ ) to the publicly available allergy data set.

Genes overlapping between							
All comparisons (L $\omega$ , LP and P $\omega$ )		L $\omega$ vs. LP		L $\omega$ vs. P $\omega$		LP vs. P $\omega$	
cg14060519	<i>MYOF</i>	cg14060519	<i>MYOF</i>	cg12133451	NA	cg14060519	<i>MYOF</i>
cg05733780	<i>C6orf123</i>	cg15205559	NA	cg14060519	<i>MYOF</i>	cg27474175	<i>ZFAND6</i>
cg10473311	<i>PTPRN2</i>	cg16786808	<i>EPHA4</i>	cg05830791	NA	cg05733780	<i>C6orf123</i>
		cg05733780	<i>C6orf123</i>	cg26394940	<i>C22orf26</i>	cg10473311	<i>PTPRN2</i>
		cg10473311	<i>PTPRN2</i>	cg05733780	<i>C6orf123</i>	cg11953088	NA
		cg00330059	<i>ODZ3</i>	cg10473311	<i>PTPRN2</i>	cg17740434	<i>MIR548N</i>
		cg02390801	<i>CCDC33</i>	cg05482498	NA	cg26466508	<i>FILIP1</i>
		cg03035115	NA	cg07327178	NA		
		cg06804823	NA	cg09230756	NA		
		cg11479811	<i>PP14571</i>	cg14743812	NA		
		cg27306802	<i>MEGF6</i>	cg14950193	<i>C7orf63</i>		
				cg19421526	<i>CRTAC1</i>		
				cg19735538	<i>C6orf227</i>		
				cg27307810	<i>LOC154822</i>		

CpG position identifiers and gene names are reported (when applicable). NA – not applicable.

**Table S11.** Cell type proportions in the included CD4+ T cell samples, as determined using the Houseman method.

<b>Intervention group</b>	<b>L<math>\omega</math></b>	<b>LP</b>	<b>P<math>\omega</math></b>	<b>PP</b>
CD8+ T cells	1 (0-3)	2 (1-4)	2 (1-3)	2 (1-3)
CD4+ T cells	96 (94-98)	94 (93-96)	95 (92-98)	96 (94-97)
NK cells	0 (0-0)	0 (0-0)	0 (0-0)	0 (0-0)
B cells	0 (0-0)	1 (0-1)	0 (0-0)	0 (0-0)
Monocytes	0 (0-0)	0 (0-0)	0 (0-0)	0 (0-0)
Granulocytes	1 (1-3)	3 (2-3)	2 (1-4)	2 (1-3)

The proportions of each cell type are expressed as medians with interquartile ranges in brackets. L – *Lactobacillus reuteri*,  $\omega$  –  $\omega$ -3 fatty acids, P – placebo.