

1 **Burden of Post-COVID-19 Syndrome and Implications for Healthcare Service Planning: A**
2 **Population-based Cohort Study**

3
4 Dominik Menges, MD MPH¹ *, Tala Ballouz, MD MPH¹ *, Alexia Anagnostopoulos, MD MPH¹,
5 H el ene E Aschmann, PhD¹, Anja Domenghino, MD^{1,2}, Jan S Fehr, MD¹, Milo A Puhan, MD
6 PhD¹

7
8 ¹ *Epidemiology, Biostatistics and Prevention Institute (EBPI), University of Zurich,*
9 *Hirschengraben 84, CH-8001 Zurich, Switzerland*

10 ² *Department of Visceral and Transplantation Surgery, University Hospital Zurich, University of*
11 *Zurich, R amistrasse 100, CH-8091 Zurich, Switzerland*

12 * These authors contributed equally to this work.

13

14 **Corresponding author:**

15 Milo A Puhan, MD, PhD
16 Epidemiology, Biostatistics and Prevention Institute (EBPI)
17 University of Zurich
18 Hirschengraben 84, CH-8001 Zurich, Switzerland
19 Phone: +41 44 634 46 10, Email: miloalan.puhan@uzh.ch

20

21 **Keywords:** COVID-19, SARS-CoV-2, Post-COVID-19 Syndrome, Long Covid, Cohort Study,
22 Healthcare Planning, Public Health, Epidemiology

23

24 **Abstract**

25 **Background:** Longer-term consequences after SARS-CoV-2 infection are becoming an
26 important burden to societies and healthcare systems. Data on post-COVID-19 syndrome in the
27 general population are required for the timely planning of healthcare services and resources.
28 The objective of this study was to assess the prevalence of impaired health status and physical
29 and mental health symptoms among individuals at least six months after SARS-CoV-2 infection,
30 and to characterize their healthcare utilization.

31 **Methods:** This population-based prospective cohort study (Zurich SARS-CoV-2 Cohort)
32 enrolled 431 adults from the general population with polymerase chain reaction-confirmed
33 SARS-CoV-2 infection reported to health authorities between 27 February 2020 and 05 August
34 2020 in the Canton of Zurich, Switzerland. We evaluated the proportion of individuals reporting
35 not to have fully recovered since SARS-CoV-2 infection, and the proportion reporting fatigue
36 (Fatigue Assessment Scale), dyspnea (mMRC dyspnea scale) or depression (DASS-21) at six
37 to eight months after diagnosis. Furthermore, the proportion of individuals with at least one
38 healthcare contact after their acute illness was evaluated. Multivariable logistic regression
39 models were used to assess factors associated with these main outcomes.

40 **Results:** Symptoms were present in 385 (89%) participants at diagnosis and 81 (19%) were
41 initially hospitalized. At six to eight months, 111 (26%) reported not having fully recovered. 233
42 (55%) participants reported symptoms of fatigue, 96 (25%) had at least grade 1 dyspnea, and
43 111 (26%) had DASS-21 scores indicating symptoms of depression. 170 (40%) participants
44 reported at least one general practitioner visit related to COVID-19 after acute illness, and 10%
45 (8/81) of initially hospitalized individuals were rehospitalized. Individuals that have not fully
46 recovered or suffer from fatigue, dyspnea or depression were more likely to have further
47 healthcare contacts. However, a third of individuals (37/111) that have not fully recovered did
48 not seek further care.

49 **Conclusions:** In this population-based study, a relevant proportion of participants suffered from
50 longer-term consequences after SARS-CoV-2 infection. With millions infected across the world,
51 our findings emphasize the need for the timely planning of resources and patient-centered
52 services for post-COVID-19 care.

53 **Registration:** ISRCTN14990068

54

55

56

57 **Background**

58 As of February 2021, the severe acute respiratory syndrome coronavirus 2 (SARS-CoV-2)
59 pandemic has resulted in more than 110 million infected cases and almost 2.5 million lives lost,
60 at significant costs to healthcare systems and societies worldwide [1]. While initial public health
61 responses focused on reducing the acute burden of coronavirus disease 2019 (COVID-19), a
62 growing body of evidence indicates that SARS-CoV-2 infection can also result in longer-term
63 physical and mental health consequences, which are of increasing concern for healthcare
64 systems [2–4]. Such consequences lasting for longer than three months after infection are
65 currently referred to as “post-COVID-19 syndrome” or “Long Covid” [4].

66
67 Few observational studies, predominantly conducted in patients hospitalized for acute COVID-
68 19, have examined the persistence of symptoms and development of complications after SARS-
69 CoV-2 infection beyond three months [5–7]. These studies reported that 33% up to 76% of
70 infected individuals may experience persistent complaints for at least six months after acute
71 illness [5]. Further studies in hospitalized patients found that up to 20% of patients had to be
72 rehospitalized [8], and up to 80% may require follow-up in primary care within 2 months of
73 hospital discharge [9]. However, current evidence shows that post-COVID-19 syndrome does
74 not only occur in individuals with severe disease requiring hospitalization or in older individuals
75 with comorbidities, but also in young and previously healthy individuals with mild disease [3, 7,
76 10, 11]. Data regarding the full burden of post-COVID-19 syndrome in the broader population of
77 infected individuals is currently lacking. It is increasingly acknowledged that specific healthcare
78 services and resources will be required to support the needs of individuals suffering from post-
79 COVID-19 syndrome [2, 4, 12]. In response, several countries have started to set up specialized
80 clinics [13, 14], and multiple patient support groups and networks for affected individuals have
81 been formed to improve the general understanding of post-COVID-19 syndrome and identify
82 needs for healthcare systems [12].

83

84 To successfully plan healthcare services and efficiently allocate public health resources, it is
85 essential to determine the burden of longer-term consequences of SARS-CoV-2 infection and
86 the needs of affected individuals. In this population-based study of SARS-CoV-2 infected
87 individuals surveyed at least six months after diagnosis, we aimed to assess the longer-term
88 physical and mental health impact of COVID-19 and the associated healthcare utilization.
89 Thereby, we aimed to provide an evidence base for the planning of healthcare services for
90 individuals suffering from post-COVID-19 syndrome.

91

92 **Methods**

93 ***Study design and participants***

94 This study is based on data from participants of the Zurich SARS-CoV-2 Cohort study, a
95 prospective, longitudinal cohort of polymerase chain reaction (PCR)-confirmed SARS-CoV-2
96 infected individuals diagnosed between 27 February 2020 and 05 August 2020. We recruited
97 study participants from within contact tracing at the Department of Health of the Canton of
98 Zurich, Switzerland, based on mandatory laboratory reporting of all individuals diagnosed with
99 SARS-CoV-2. We screened all SARS-CoV-2-positive individuals for whom contact information
100 was available for eligibility. Eligibility criteria were being aged 18 years or older and able to
101 follow study procedures, having sufficient knowledge of the German language, and residing in
102 the Canton of Zurich. We enrolled participants into the study between 06 October 2020 and 26
103 January 2021, at a median of 7.2 months (range 5.9 to 10.3 months) after their diagnosis. The
104 study protocol was approved by the responsible ethics committee of the Canton of Zurich.
105 Informed consent was obtained from all participants.

106

107 ***Data sources and outcome measurement***

108 After enrolment, participants completed an electronic baseline questionnaire including questions
109 on socio-demographics, medical comorbidities and risk factors, details on their acute SARS-
110 CoV-2 infection, current health status and symptoms, healthcare contacts since diagnosis, and
111 health-related quality of life. All data was collected through the Research Electronic Data
112 Capture (REDCap) survey system.

113
114 Acute COVID-19 was defined as symptoms, consequences and healthcare contacts within four
115 weeks of diagnosis. To capture the longer-term effects of SARS-CoV-2 infection, we evaluated
116 whether participants who were symptomatic in the acute phase had fully recovered compared to
117 their normal health status before infection using a four-category scale (i.e., feeling “recovered
118 and symptom free”, “better but not fully recovered”, “neither better nor worse”, or “worse”). We
119 assessed the presence and type of any new or ongoing symptoms since the acute illness using
120 a comprehensive list of symptoms. Additionally, we reviewed and coded comments in free text
121 fields for further new or ongoing symptoms not captured by the preconceived questionnaire.

122
123 We evaluated the presence of fatigue using the Fatigue Assessment Scale (FAS), using a score
124 of 22 or more as a threshold for determining the presence of relevant fatigue [15]. To assess
125 longer-term respiratory complications, we administered the modified Medical Research Council
126 (mMRC) dyspnea scale [16]. We assessed the presence and severity of depression, anxiety
127 and stress symptoms using the 21-item Depression, Anxiety and Stress Scale (DASS-21). We
128 calculated category scores as the sum of subscale item scores multiplied by two and assigned
129 corresponding severity levels according to official user guidance [17, 18]. We evaluated health-
130 related quality of life using the EQ-5D-5L instrument and visual analogue scale (EQ VAS) [19,
131 20]. We used the Dutch value set for calculating EQ-5D-5L index scores, as no value set or
132 guidance on the most appropriate value set for Switzerland is available, and we judged the
133 the population of the Netherlands to be relatively similar to the Swiss population.

134

135 We assessed healthcare service utilization by eliciting all healthcare contacts that participants
136 have had since their acute illness. We asked participants about any general practitioner visits,
137 medical hotline calls, and hospital admissions, as well as the main reason for each contact. To
138 evaluate healthcare utilization specifically due to COVID-19, we restricted our analysis to
139 healthcare contacts reported to be related to persistent or worsening symptoms, complications
140 or new medical diagnoses related to COVID-19, or routine follow-up after COVID-19. In
141 addition, we asked participants to report any medical conditions that have been newly
142 diagnosed since their acute illness and whether the condition was evaluated as COVID-19-
143 related by their physician or themselves.

144

145 ***Statistical analysis***

146 We used descriptive statistics to analyze participant characteristics and outcomes of interest,
147 and present results for the entire study population as well as stratified by age groups, sex, and
148 hospitalization status.

149

150 We examined the data for missing values and report such where applicable. For responses to
151 the FAS and DASS-21 instruments, we replaced missing data with the mean of the scores from
152 the other available items. This was done for a maximum of two missing values for the FAS and
153 for a maximum of one value for the DASS-21. We omitted FAS or DASS-21 responses with
154 higher amounts of missing data from respective analyses. For the EQ-5D-5L, responses with
155 invalid and missing data were omitted given the small amount of missing data (n=4). No
156 imputation was applied for other missing data.

157

158 We assessed associations of potential predictors with the primary outcomes using univariable
159 and multivariable logistic regression models. We based model selection on clinical and

160 epidemiological reasoning and the Akaike Information Criterion (AIC). We defined age group,
161 sex and initial hospitalization as a priori covariables in the models based on the findings of other
162 studies. We performed model selection separately for each outcome of interest by including
163 variables that improved model fit based on AIC, with a difference of 2 points considered
164 relevant. For the outcome of (non-)recovery, we restricted the analysis to initially symptomatic
165 participants since the respective question was conditional on the presence of symptoms at time
166 of infection. We report regression analysis results as odds ratios (OR) with corresponding 95%
167 confidence interval (CI) and two-sided Wald-type statistical test. No p-value adjustment was
168 applied. All analyses were performed using R version 4.0.2 [21].

169
170 In sensitivity analyses, we stratified results into time periods with limited testing (period before
171 25 June 2020, testing restricted to high-risk or severely symptomatic individuals) and increased
172 testing (period after 25 June 2020, all symptomatic individuals could be tested). Additionally, we
173 stratified results into time periods with limited and high public awareness of post-COVID-19
174 syndrome (period before and after 09 November 2020, when major Swiss news outlets started
175 reporting about the syndrome). Last, we descriptively compared participants and
176 nonparticipants for age, sex, presence of symptoms and hospitalization at infection to assess
177 potential selection of participants.

178

179 **Results**

180 ***Study population***

181 Between 27 February 2020 and 05 August 2020, 4639 individuals were diagnosed with SARS-
182 CoV-2 in the Canton of Zurich (Figure 1). Contact information was available for 2209 individuals,
183 among which 1309 were eligible and invited to participate in our study. 442 individuals agreed to
184 participate (participation rate 34%) and 431 were included in this analysis.

185

186 The median age of participants was 47 years (IQR 33 to 58 years) and 50% were female (Table
187 1). At least one chronic comorbidity was reported by 147 (34%) participants. During acute
188 infection, 385 (89%) participants were symptomatic, with a median of 6 (IQR 3 to 8) symptoms
189 reported. Symptoms were described as mild to moderate in 221 (51%) and severe to very
190 severe in 164 participants (38%). Most commonly reported symptoms were fatigue (64%), fever
191 (63%), cough (50%) and loss of taste or smell (49%). 81 (19%) participants were hospitalized
192 due to COVID-19 for a median duration of 7 days (IQR 4 to 15 days).

193

194 ***Recovery and longer-term symptoms***

195 Overall, 111 (26%) participants reported that they had not fully recovered at six to eight months
196 after SARS-CoV-2 infection (Table 2). A higher percentage of female participants and initially
197 hospitalized individuals reported not having fully recovered compared to males and non-
198 hospitalized individuals, respectively. In multivariable analyses among initially symptomatic
199 participants, we found evidence that severe to very severe symptoms during acute illness and
200 the presence of comorbidities were associated with non-recovery (Figure 2; Supplementary
201 Material, Table S1). Furthermore, females were less likely to have recovered compared to
202 males, while there was no evidence for an association of age or initial hospitalization with non-
203 recovery.

204

205 Similarly, 106 (25%) participants reported new or ongoing symptoms, with a higher percentage
206 in females compared to males (Table 2). Fatigue (12%), cough (10%), sore throat (9%) and
207 headache (9%) were the most frequently reported symptoms. Taste and smell disturbances
208 were reported by 21 (5%) and rash by 3 (1%) individuals. Among non-recovered participants, 51
209 (46%) also described experiencing new or ongoing symptoms. Meanwhile, 55 (52%)
210 participants reporting such symptoms stated not having fully recovered. Overall, 166 (39%)
211 participants reported either not having fully recovered or having new or ongoing symptoms.

212

213 ***Fatigue***

214 Among all participants, 233 (55%) participants having a score indicating fatigue, with a median
215 FAS score of 22 (IQR 19 to 25) (Table 2). Younger individuals and female participants more
216 frequently reported symptoms of fatigue compared to older age groups and males, respectively.
217 In multivariable analyses, we found evidence that individuals aged 40 years or older were less
218 likely to experience fatigue compared to 18-39 year-old participants (Figure 2; Supplementary
219 Material, Table S2). However, we found no evidence for an association of sex, initial symptom
220 severity or hospitalization with fatigue.

221

222 ***Dyspnea***

223 A total of 96 (25%) participants reported to suffer from mMRC grade 1 dyspnea or higher (Table
224 2). We observed a higher percentage of grade ≥ 1 dyspnea among older age individuals,
225 females, and initially hospitalized participants. In multivariable analyses, we found evidence for
226 an association of grade ≥ 1 dyspnea with female sex, initial hospitalization and body mass index,
227 but not for initial symptom severity or smoking status (Figure 2; Supplementary Material, Table
228 S3).

229

230 ***Depression, anxiety and stress***

231 Overall, 111 (26%) participants reported symptoms of depression, 135 (32%) reported
232 symptoms of anxiety, and 68 (16%) reported symptoms of stress (Table 2). Higher proportions
233 of participants reported depressive symptoms in older age groups and among females. Similar
234 contrasts were observed for symptoms of anxiety. Meanwhile, younger participants and females
235 more often reported stress symptoms compared to older individuals and males, respectively. In
236 multivariable analyses, we only found lower education status and being unemployed to be
237 associated with symptoms of depression (Figure 2; Supplementary Material, Table S4).

238

239 ***Overlap of main outcomes and health-related quality of life***

240 In total, 296 (69%) participants were categorized as non-recovered or experiencing fatigue,
241 dyspnea or depression. Among these, 19 (6.4%) participants reported all four outcomes, while
242 130 (44%) suffered only from one of them (Supplementary Material, Figure S1). Most frequent
243 combinations were fatigue and depression (n=94, 32%), fatigue and non-recovery (n=78, 26%),
244 and fatigue and mMRC grade ≥ 1 dyspnea (n=68, 23%). Among all participants, 225 (53%)
245 reported problems in at least one EQ-5D-5L dimension. Most frequently affected dimensions
246 were pain/discomfort (n=151, 39%) and anxiety/depression (n=133, 31%) (Table 2).

247

248 ***Healthcare service utilization***

249 A total of 170 (40%) participants reported having had at least one contact with the healthcare
250 system for reasons related to COVID-19 (Table 3). Out of 81 initially hospitalized individuals, 8
251 (10%) were rehospitalized at least once due to persistent symptoms or COVID-19-related
252 complications. 224 (52%) participants reported at least one general practitioner visit for any
253 reason, and 150 (36%) had a general practitioner visit related to COVID-19. Among those, the
254 median number of COVID-19-related general practitioner visits was 2 (IQR 1 to 3). Older and
255 initially hospitalized individuals more frequently reported having seen a general practitioner.
256 Additionally, 31 (7%) participants reported to have called a medical hotline for a reason related
257 to COVID-19. Among non-recovered participants, 33% (37/111) did not report any further
258 healthcare contacts (Supplementary Material, Table S5).

259

260 Since infection, 77 (18%) participants reported a new physician-diagnosed medical condition. 27
261 (35%) of these diagnoses were considered as related to COVID-19 by their physician (Table 3).
262 Most frequently reported COVID-19-related conditions concerned the respiratory system (56%),
263 followed by neuro-cognitive (30%), cardiovascular (11%), and skin disorders (11%). In

264 multivariable analyses, we found evidence for an association between healthcare use and initial
265 hospitalization, having experienced severe to very severe symptoms, sex, and age ≥ 40 years
266 (Figure 3; Supplementary Material, Table S6). Furthermore, not having fully recovered, grade ≥ 1
267 dyspnea, fatigue and symptoms of depression were associated with further healthcare contacts
268 after acute COVID-19.

269

270 **Discussion**

271 ***Main findings***

272 In this population-based cohort study, we found that one in four people had not fully recovered
273 within six to eight months after SARS-CoV-2 infection. More than half of the participants in our
274 study reported symptoms of fatigue. One fourth suffered from some degree of dyspnea or had
275 symptoms of depression. Overall, more than two thirds had not recovered or experienced
276 fatigue, dyspnea or depression at the time of follow-up, with only partial overlap between these
277 outcomes. While not all of these outcomes are necessarily attributable to COVID-19, our study
278 showed that an important proportion of infected individuals may develop post-COVID-19
279 syndrome and that a wide range of healthcare services may be required to support their needs.

280

281 Two fifths of study participants had at least one further healthcare contact related to COVID-19
282 after acute illness. 36% of participants reported further general practitioner visits, 7% calls to
283 medical hotlines, and 10% of initially hospitalized participants were rehospitalized at least once
284 for persistent symptoms or complications. Compared to recovered individuals, those not having
285 fully recovered were more than three times more likely to have further healthcare contacts.

286 These findings highlight the considerable long-term impact that COVID-19 may have both on
287 affected individuals and healthcare systems worldwide.

288

289 ***Evidence in context***

290 The NICE guidelines defined post-COVID-19 syndrome as signs and symptoms developing
291 during or after COVID-19 and continuing for more than 12 weeks [4]. Various studies have
292 described a wide range of physical, cognitive and psychological symptoms persisting up to three
293 months in individuals recovering from COVID-19 [22–31]. Yet, only few studies have assessed
294 the persistence of symptoms beyond three months after infection [5–7].

295
296 Compared to studies that enrolled patients who were hospitalized for acute COVID-19 [5, 6], we
297 observed a lower percentage of individuals suffering from longer-term symptoms. While these
298 differences could be partly due to older participant populations and the restriction to hospitalized
299 patients in their studies, we still observed lower proportions of non-recovery and persistent
300 symptoms among hospitalized patients and older individuals. Meanwhile, a longitudinal cohort
301 including 91% of participants with mild disease found persistent symptoms in 33% of outpatients
302 and 31% of hospitalized patients [7]. These observations are more comparable to our findings.
303 While differences in study populations and outcome measurement are likely to strongly affect
304 the comparability of studies on post-COVID-19 syndrome, a relatively high prevalence of
305 fatigue, dyspnea or exercise intolerance, and psychological symptoms have consistently been
306 noted across studies [5–7, 10, 11].

307
308 Only few studies so far have described the utilization of healthcare services after COVID-19 [8,
309 9, 32–34]. At two months, 9% to 20% of patients hospitalized for COVID-19 were found to
310 require rehospitalization, with a higher risk in older individuals and those with comorbidities [8,
311 9, 32–34]. The observed rehospitalization rate in our study is broadly consistent with these
312 estimates. One study found that 78% of hospitalized participants had seen a primary care
313 physician after hospital discharge for any reason after 2 months [9]. In our study, 63% of
314 hospitalized participants reported having had a general practitioner visit after hospital discharge.
315 As noted above, differences in study populations likely affect the comparison of results across

316 studies. Further studies based on standardized assessments of health outcomes and symptom
317 complexes will be necessary to capture the full spectrum of post-COVID-19 syndrome.

318

319 ***Implications for healthcare resource planning***

320 The management and care of individuals with post-COVID-19 syndrome is likely to become a
321 substantial burden for healthcare systems worldwide. In Switzerland, more than half a million
322 individuals have been diagnosed with COVID-19 [35], and around 1.5 million are estimated to
323 have been infected according to current seroprevalence studies [36]. Based on our estimates, a
324 relevant number of individuals suffering from longer-term complications has to be expected,
325 which will require some degree of support or healthcare services. In our study, we provide more
326 detailed data on healthcare utilization incurring due to COVID-19. More than a third of infected
327 individuals in our study needed an average of two further primary care consultations related to
328 protracted symptoms or complications. Interestingly, we also observed that despite an
329 increased likelihood of seeking care in those who have not returned to their normal health
330 status, approximately one third of these participants did not report any further healthcare contact
331 after their acute illness. This indicates that there may be a relevant need among previously
332 infected individuals for additional services specialized in the care of people with post-COVID-19
333 syndrome. Our study provides important evidence for understanding the longer-term
334 complications and burden of COVID-19 on healthcare systems and for planning public health
335 resources and tailored services accordingly.

336

337 ***Limitations***

338 By relying on official records of all diagnosed infections, our study provided a unique opportunity
339 to evaluate post-COVID-19 syndrome in the general population, based on the full spectrum of
340 disease severity. However, our study also has several limitations.

341

342 First, most participants included in this analysis were diagnosed with COVID-19 during the first
343 pandemic wave in Switzerland. The capacity constraints in SARS-CoV-2-testing up to June
344 2020 may have selected for a population with a higher risk of experiencing severe disease.
345 Furthermore, increased awareness of post-COVID-19 syndrome may have resulted in more
346 frequent reporting of health issues by participants. However, sensitivity analyses stratified by
347 time periods of limited and increased testing and limited and increased awareness of post-
348 COVID-19 syndrome did not show a relevant difference between the respective time periods
349 (Supplementary Material, Table S7).

350

351 Second, self-selection bias may have occurred if individuals who are more concerned with their
352 health were more likely to participate. Compared to individuals not participating in our study,
353 participants in our study were younger on average, and a lower proportion was hospitalized for
354 COVID-19 (19% compared to 24% of nonparticipants) (Supplementary Material, Table S8).

355

356 Third, we did not have a baseline (pre-COVID-19) assessment of participants' physical and
357 mental health. Thus, it is impossible to distinguish the effects of COVID-19 from pre-existing
358 conditions. The interpretation of our findings regarding depression and anxiety is further limited
359 by the psychological burden that the pandemic may impose in general [37, 38]. While we tried to
360 compare our results with estimates from the general population, applicable comparison data
361 was not available.

362

363 Last, we did not evaluate the use of specialized medical (e.g., psychological/psychiatric care) or
364 diagnostic services in our assessment. Thus, the true extent of healthcare service utilization
365 may be underestimated. The unavailability of targeted post-COVID-19 care programs in
366 Switzerland at the time of enrolment may have led to an underestimation of the healthcare
367 demand to be expected once such programs become available.

368

369 **Conclusion**

370 Our population-based cohort study showed that a considerable proportion of SARS-CoV-2
371 infected individuals experience longer-term consequences and have a relevant demand for
372 healthcare services. A wide range of services and patient-centered, integrative approaches will
373 be required to support the recovery of these individuals. It is thus crucial to timely allocate
374 resources and plan healthcare services to respond to the needs of those suffering from post-
375 COVID-19 syndrome.

376

377

378 **List of abbreviations**

379	AIC	Akaike Information Criterion
380	CI	Confidence Interval
381	COVID-19	Coronavirus disease 2019
382	DASS-21	21-item Depression, Anxiety and Stress Scale
383	EQ-5D-5L	EuroQol 5-dimension 5-level
384	EQ VAS	EuroQol Visual Analogue Scale
385	FAS	Fatigue Assessment Scale
386	IQR	Interquartile range
387	mMRC	Modified Medical Research Council
388	OR	Odds Ratio
389	SARS-CoV-2	Severe acute respiratory syndrome coronavirus 2

390

391

392 **Declarations**

393

394 **Ethical approval:** The study was approved by the responsible ethics committee of the Canton
395 of Zurich, Switzerland (Kantonale Ethik-Kommission Zürich; BASEC-Nr. 2020-01739). Informed
396 consent was obtained from all participants.

397

398 **Consent for publication:** Not applicable.

399

400 **Availability of data and materials:** The datasets used and/or analysed during the current study
401 are available from the corresponding author on reasonable request. Data requestors will need to
402 sign a data access agreement.

403

404 **Competing interests:** The authors declare that they have no competing interests.

405

406 **Funding:** The Zurich SARS-CoV-2 Cohort study is part of the Corona Immunitas research
407 program, coordinated by the Swiss School of Public Health (SSPH+) and funded through
408 SSPH+ fundraising, including funding by the Swiss Federal Office of Public Health, the Cantons
409 of Switzerland (Basel, Vaud and Zurich), private funders (ethical guidelines for funding stated by
410 SSPH+ were respected) and institutional funds of the participating universities. Additional
411 funding specific to this study was provided by the Department of Health of the Canton of Zurich
412 and the University of Zurich Foundation. Study funders had no role in the study design, data
413 collection, analysis, interpretation, or writing of this report.

414

415 **Authors' contributions:** DM, TB, HEA, JSF and MAP conceived and planned the Zurich
416 SARS-CoV-2 Cohort study. DM, TB and MAP coordinated the Zurich SARS-CoV-2 Cohort
417 study. TB, DM, AA, JSF and MAP designed this study. HEA implemented and coordinated the

418 recruitment of study participants. TB, DM, and AD contributed to the enrolment of study
419 participants and data collection. TB and DM prepared the analytic datasets and performed the
420 statistical analysis. TB, DM, AA, JSF and MAP contributed to the interpretation of findings. TB
421 and DM drafted the first manuscript. All authors had access to the data in the study and accept
422 responsibility to submit for publication. All authors critically revised the draft manuscript and
423 read and approved the final manuscript. MAP had full access to all the data in the study and
424 takes responsibility for the integrity of the data and the accuracy of the data analysis.

425

426 **Acknowledgements:** We would like to thank the study administration staff and the staff of the
427 Corona Center of the University of Zurich for their excellent work and dedication to this study.
428 Furthermore, we thank the Department of Health of the Canton of Zurich for their support and
429 collaboration in realizing the study. And last, we thank all the study participants for their valuable
430 time and commitment to the Zurich SARS-CoV-2 Cohort.

431

432

433 **References**

- 434 1. World Health Organization (WHO). Coronavirus Disease (COVID-19) Situation Reports:
435 Weekly Epidemiological Update 23 February 2021.
436 <https://www.who.int/emergencies/diseases/novel-coronavirus-2019/situation-reports>. Accessed
437 25 Feb 2021.
- 438 2. Greenhalgh T, Knight M, A'Court C, Buxton M, Husain L. Management of post-acute covid-19
439 in primary care. *BMJ*. 2020;370:m3026.
- 440 3. National Institute for Health Research (NIHR). Living with Covid19. 2020.
441 doi:10.3310/themedreview_41169.
- 442 4. National Institute for Health and Care Excellence (NICE). COVID-19 rapid guideline:
443 managing the long-term effects of COVID-19. 2020. <https://www.nice.org.uk/guidance/ng188>.
444 Accessed 19 Jan 2021.
- 445 5. Huang C, Huang L, Wang Y, Li X, Ren L, Gu X, et al. 6-month consequences of COVID-19 in
446 patients discharged from hospital: a cohort study. *Lancet*. 2021;397:220–32.
- 447 6. Bellan M, Soddu D, Balbo PE, Baricich A, Zeppegno P, Avanzi GC, et al. Respiratory and
448 Psychophysical Sequelae Among Patients With COVID-19 Four Months After Hospital
449 Discharge. *JAMA Netw Open*. 2021;4:e2036142.
- 450 7. Logue JK, Franko NM, McCulloch DJ, McDonald D, Magedson A, Wolf CR, et al. Sequelae in
451 Adults at 6 Months After COVID-19 Infection. *JAMA Netw Open*. 2021;4:e210830.
- 452 8. Donnelly JP, Wang XQ, Iwashyna TJ, Prescott HC. Readmission and Death After Initial
453 Hospital Discharge Among Patients With COVID-19 in a Large Multihospital System. *JAMA*.
454 2021;325:304.
- 455 9. Chopra V, Flanders SA, O'Malley M, Malani AN, Prescott HC. Sixty-Day Outcomes Among
456 Patients Hospitalized With COVID-19. *Ann Intern Med*. 2020;M20-5661.

- 457 10. Davis HE, Assaf GS, McCorkell L, Wei H, Low RJ, Re'em Y, et al. Characterizing Long
458 COVID in an International Cohort: 7 Months of Symptoms and Their Impact. medRxiv. 2020;
459 12.24.20248802.
- 460 11. Sudre CH, Murray B, Varsavsky T, Graham MS, Penfold RS, Bowyer RC, et al. Attributes
461 and predictors of Long-COVID: analysis of COVID cases and their symptoms collected by the
462 Covid Symptoms Study App. medRxiv. 2020; 10.19.20214494.
- 463 12. Norton A, Olliaro P, Sigfrid L, Carson G, Paparella G, Hastie C, et al. Long COVID: tackling
464 a multifaceted condition requires a multidisciplinary approach. *The Lancet Infectious Diseases*.
465 2021;S1473-3099(21)00043-8.
- 466 13. National Health Service (NHS) England. Long COVID patients to get help at more than 60
467 clinics. [https://www.england.nhs.uk/2020/12/long-covid-patients-to-get-help-at-more-than-60-](https://www.england.nhs.uk/2020/12/long-covid-patients-to-get-help-at-more-than-60-clinics/)
468 [clinics/](https://www.england.nhs.uk/2020/12/long-covid-patients-to-get-help-at-more-than-60-clinics/). Accessed 25 Feb 2021.
- 469 14. Center for Disease Control and Prevention (CDC). Coronavirus Disease 2019 (COVID-19).
470 Centers for Disease Control and Prevention. 2020. [https://www.cdc.gov/coronavirus/2019-](https://www.cdc.gov/coronavirus/2019-ncov/hcp/clinical-criteria.html)
471 [ncov/hcp/clinical-criteria.html](https://www.cdc.gov/coronavirus/2019-ncov/hcp/clinical-criteria.html). Accessed 18 Mar 2020.
- 472 15. Michielsen HJ, De Vries J, Van Heck GL. Psychometric qualities of a brief self-rated fatigue
473 measure: The Fatigue Assessment Scale. *Journal of Psychosomatic Research*. 2003;54:345–
474 52.
- 475 16. Mahler DA, Wells CK. Evaluation of Clinical Methods for Rating Dyspnea. *Chest*.
476 1988;93:580–6.
- 477 17. Depression Anxiety Stress Scales (DASS). <http://www2.psy.unsw.edu.au/dass/>. Accessed
478 25 Feb 2021.
- 479 18. Lovibond SH, Lovibond PF, Psychology Foundation of Australia. Manual for the depression
480 anxiety stress scales. Sydney, N.S.W.: Psychology Foundation of Australia; 1995.

- 481 19. Herdman M, Gudex C, Lloyd A, Janssen MF, Kind P, Parkin D, et al. Development and
482 preliminary testing of the new five-level version of EQ-5D (EQ-5D-5L). *Qual Life Res.*
483 2011;20:1727–36.
- 484 20. Devlin N, Parkin D, Janssen B. An Introduction to EQ-5D Instruments and Their
485 Applications. In: Devlin N, Parkin D, Janssen B, editors. *Methods for Analysing and Reporting*
486 *EQ-5D Data*. Cham: Springer International Publishing; 2020. p. 1–22.
- 487 21. R Core Team. R: A language and environment for statistical computing. R Foundation for
488 Statistical Computing. Vienna, Austria. 2017. <https://www.R-project.org/>.
- 489 22. Carfi A, Bernabei R, Landi F, for the Gemelli Against COVID-19 Post-Acute Care Study
490 Group. Persistent Symptoms in Patients After Acute COVID-19. *JAMA.* 2020;324:603.
- 491 23. Carvalho-Schneider C, Laurent E, Lemaigen A, Beaufiles E, Bourbao-Tournois C, Laribi S,
492 et al. Follow-up of adults with noncritical COVID-19 two months after symptom onset. *Clin*
493 *Microbiol Infect.* 2021;27:258–63.
- 494 24. Garrigues E, Janvier P, Kherabi Y, Bot AL, Hamon A, Gouze H, et al. Post-discharge
495 persistent symptoms and health-related quality of life after hospitalization for COVID-19. *Journal*
496 *of Infection.* 2020;81:e4–6.
- 497 25. Goërtz YMJ, Van Herck M, Delbressine JM, Vaes AW, Meys R, Machado FVC, et al.
498 Persistent symptoms 3 months after a SARS-CoV-2 infection: the post-COVID-19 syndrome?
499 *ERJ Open Res.* 2020;6:00542–2020.
- 500 26. Halpin SJ, McIvor C, Whyatt G, Adams A, Harvey O, McLean L, et al. Postdischarge
501 symptoms and rehabilitation needs in survivors of COVID-19 infection: A cross-sectional
502 evaluation. *Journal of Medical Virology.* 2021;93:1013–22.
- 503 27. Mandal S, Barnett J, Brill SE, Brown JS, Denny EK, Hare SS, et al. ‘Long-COVID’: a
504 cross-sectional study of persisting symptoms, biomarker and imaging abnormalities following
505 hospitalisation for COVID-19. *Thorax.* 2020;thoraxjnl-2020-215818.

- 506 28. Taquet M, Luciano S, Geddes JR, Harrison PJ. Bidirectional associations between COVID-
507 19 and psychiatric disorder: retrospective cohort studies of 62 354 COVID-19 cases in the
508 USA. *Lancet Psychiatry*. 2021;8:130–40.
- 509 29. Townsend L, Dyer AH, Jones K, Dunne J, Mooney A, Gaffney F, et al. Persistent fatigue
510 following SARS-CoV-2 infection is common and independent of severity of initial infection.
511 *PLOS ONE*. 2020;15:e0240784.
- 512 30. Wong AW, Shah AS, Johnston JC, Carlsten C, Ryerson CJ. Patient-reported outcome
513 measures after COVID-19: a prospective cohort study. *Eur Respir J*. 2020;56.
- 514 31. Xiong Q, Xu M, Li J, Liu Y, Zhang J, Xu Y, et al. Clinical sequelae of COVID-19 survivors in
515 Wuhan, China: a single-centre longitudinal study. *Clinical Microbiology and Infection*.
516 2021;27:89–95.
- 517 32. Bowles KH, McDonald M, Barrón Y, Kennedy E, O'Connor M, Mikkelsen M. Surviving
518 COVID-19 After Hospital Discharge: Symptom, Functional, and Adverse Outcomes of Home
519 Health Recipients. *Ann Intern Med*. 2020;M20-5206.
- 520 33. Lavery AM, Preston LE, Ko JY, Chevinsky JR, DeSisto CL, Pennington AF, et al.
521 Characteristics of Hospitalized COVID-19 Patients Discharged and Experiencing Same-Hospital
522 Readmission — United States, March–August 2020. *MMWR Morb Mortal Wkly Rep*.
523 2020;69:1695–9.
- 524 34. McCarthy CP, Murphy S, Jones-O'Connor M, Olshan DS, Khambhati JR, Rehman S, et al.
525 Early clinical and sociodemographic experience with patients hospitalized with COVID-19 at a
526 large American healthcare system. *EClinicalMedicine*. 2020;26:100504.
- 527 35. Swiss Federal Office of Public Health (FOPH). COVID-19 Switzerland: Coronavirus
528 Dashboard. <https://www.covid19.admin.ch/en/overview>. Accessed 25 Feb 2021.
- 529 36. Stringhini S, Zaballa M-E, Perez-Saez J, Pullen N, de Mestral C, Picazio A, et al.
530 Seroprevalence of anti-SARS-CoV-2 antibodies after the second pandemic peak. *Lancet Infect*
531 *Dis*. 2021;S1473-3099(21)00054-2.

- 532 37. Vindegaard N, Benros ME. COVID-19 pandemic and mental health consequences:
533 Systematic review of the current evidence. *Brain, Behavior, and Immunity*. 2020;89:531–42.
- 534 38. Quervain D de, Aerni A, Amini E, Bentz D, Coyne D, Freytag V, et al. The Swiss Corona
535 Stress Study: second pandemic wave, November 2020. doi:10.31219/osf.io/6cseh.
- 536
- 537
- 538

539 **Tables and Figures**

540 **Table 1:** Characteristics of study participants enrolled in the Zurich SARS-CoV-2 Cohort study.

Variable	N=431
Age (years)	
Median (IQR)	47 (33 to 58)
Age group (years)	
18-39	164 (38.1%)
40-64	205 (47.6%)
≥65	62 (14.4%)
Sex	
Female	214 (49.7%)
Male	217 (50.3%)
Time since diagnosis (days)	
Median (IQR)	220 (181 to 232)
Initial symptom severity	
Asymptomatic	46 (10.7%)
Mild to moderate	221 (51.3%)
Severe to very severe	164 (38.1%)
Initial symptom count	
Median (IQR)	6 (3 to 8)
Missing	1
Initial symptom duration	
Median (IQR)	10 (6 to 20)
Missing	8
Hospitalization and ICU stay	
Non-hospitalized	350 (81.2%)
Hospitalized without ICU stay	71 (16.5%)
Hospitalized with ICU stay	10 (2.3%)
Intubation during ICU stay (N=10)	7 (70%)
Smoking status	
Non-smoker	245 (57.2%)
Ex-smoker	122 (28.5%)
Smoker	61 (14.3%)
Missing	3
Body mass index	
Median (IQR)	24.8 (22.2 to 27.5)
Missing	8
Comorbidities	
No comorbidity	283 (65.7%)
At least one comorbidity	147 (34.1%)
Missing	1
Education	
None or mandatory school	20 (4.7%)
Vocational training or specialized baccalaureate	186 (43.5%)
Higher technical school or college	106 (24.8%)
University	116 (27.1%)
Missing	3
Employment	
Employed	321 (75.4%)
Student	14 (3.3%)
Retired	62 (14.6%)
Unemployed or other	29 (6.8%)
Missing	5

Income (CHF)	
<6'000	133 (32.8%)
6'000 - 12'000	156 (38.4%)
>12'000	117 (28.8%)
<i>Missing</i>	25

541 Legend: CHF = Swiss Francs, ICU = Intensive Care Unit, IQR = Interquartile Range.

542

543

Table 2: Relative health status, fatigue, dyspnea, mental health, and health-related quality of life in study participants at six to eight months after SARS-CoV-2 infection.

Variable	Age group			Sex		Hospitalization		Overall, N=431
	18-39 years, N=164	40-64 years, N=205	≥65 years, N=62	Female, N=214	Male, N=217	Non-hospitalized, N=350	Hospitalized, N=81	
Recovery								
Recovered to normal health status	133 (81.1%)	140 (68.3%)	47 (75.8%)	148 (69.2%)	172 (79.3%)	268 (76.6%)	52 (64.2%)	320 (74.2%)
Not recovered to normal health status	31 (18.9%)	65 (31.7%)	15 (24.2%)	66 (30.8%)	45 (20.7%)	82 (23.4%)	29 (35.8%)	111 (25.8%)
Self-reported symptoms								
No new or ongoing symptoms	120 (73.2%)	151 (73.7%)	54 (87.1%)	151 (70.6%)	174 (80.2%)	263 (75.1%)	62 (76.5%)	325 (75.4%)
Any new or ongoing symptoms	44 (26.8%)	54 (26.3%)	8 (12.9%)	63 (29.4%)	43 (19.8%)	87 (24.9%)	19 (23.5%)	106 (24.6%)
Recovery and symptoms								
Recovered and symptom-free	105 (64.0%)	116 (56.6%)	44 (71.0%)	114 (53.3%)	151 (69.6%)	221 (63.1%)	44 (54.3%)	265 (61.5%)
Not recovered or experiencing symptoms	59 (36.0%)	89 (43.4%)	18 (29.0%)	100 (46.7%)	66 (30.4%)	129 (36.9%)	37 (45.7%)	166 (38.5%)
Fatigue (measured by FAS)								
No fatigue	59 (36.0%)	100 (49.0%)	34 (58.6%)	86 (40.8%)	107 (49.8%)	154 (44.1%)	39 (50.6%)	193 (45.3%)
Fatigue	105 (64.0%)	104 (51.0%)	24 (41.4%)	125 (59.2%)	108 (50.2%)	195 (55.9%)	38 (49.4%)	233 (54.7%)
Missing	0	1	4	3	2	1	4	5
Dyspnea (measured by mMRC scale)								
mMRC grade 0	126 (82.4%)	139 (74.3%)	34 (61.8%)	139 (70.9%)	160 (80.4%)	259 (81.4%)	40 (51.9%)	299 (75.7%)
mMRC grade 1	25 (16.3%)	39 (20.9%)	17 (30.9%)	48 (24.5%)	33 (16.6%)	53 (16.7%)	28 (36.4%)	81 (20.5%)
mMRC grade ≥2	2 (1.3%)	9 (4.8%)	4 (7.3%)	9 (4.6%)	6 (3.0%)	6 (1.9%)	9 (11.7%)	15 (3.8%)
Missing	11	18	7	18	18	32	4	36
Depression (measured by DASS-21)								
No depression	123 (75.0%)	151 (74.0%)	43 (71.7%)	149 (70.6%)	168 (77.4%)	263 (75.4%)	54 (68.4%)	317 (74.1%)
Mild to moderate depression	33 (20.1%)	39 (19.1%)	13 (21.7%)	50 (23.7%)	35 (16.1%)	68 (19.5%)	17 (21.5%)	85 (19.9%)
Severe to very severe depression	8 (4.9%)	14 (6.9%)	4 (6.7%)	12 (5.7%)	14 (6.5%)	18 (5.2%)	8 (10.1%)	26 (6.1%)
Missing	0	1	2	3	0	1	2	3
Anxiety (measured by DASS-21)								
No anxiety	114 (69.5%)	136 (67.3%)	41 (68.3%)	125 (59.5%)	166 (76.9%)	246 (70.7%)	45 (57.7%)	291 (68.3%)
Mild to moderate anxiety	38 (23.2%)	47 (23.3%)	18 (30.0%)	64 (30.5%)	39 (18.1%)	82 (23.6%)	21 (26.9%)	103 (24.2%)
Severe to very severe anxiety	12 (7.3%)	19 (9.4%)	1 (1.7%)	21 (10.0%)	11 (5.1%)	20 (5.7%)	12 (15.4%)	32 (7.5%)
Missing	0	3	2	4	1	2	3	5

Stress (measured by DASS-21)								
No stress	134 (82.2%)	169 (82.8%)	54 (93.1%)	169 (80.1%)	188 (87.9%)	293 (84.2%)	64 (83.1%)	357 (84.0%)
Mild to moderate stress	21 (12.9%)	26 (12.7%)	4 (6.9%)	33 (15.6%)	18 (8.4%)	43 (12.4%)	8 (10.4%)	51 (12.0%)
Severe to very severe stress	8 (4.9%)	9 (4.4%)	0 (0.0%)	9 (4.3%)	8 (3.7%)	12 (3.4%)	5 (6.5%)	17 (4.0%)
Missing	1	1	4	3	3	2	4	6
EQ-5D mobility								
No mobility problems	156 (95.1%)	180 (87.8%)	45 (75.0%)	188 (88.3%)	193 (89.4%)	324 (92.8%)	57 (71.2%)	381 (88.8%)
Mobility problems	8 (4.9%)	25 (12.2%)	15 (25.0%)	25 (11.7%)	23 (10.6%)	25 (7.2%)	23 (28.7%)	48 (11.2%)
Missing	0	0	2	1	1	1	1	2
EQ-5D self care								
No problems with self-care	164 (100.0%)	203 (99.0%)	61 (100.0%)	212 (99.5%)	216 (99.5%)	348 (99.4%)	80 (100.0%)	428 (99.5%)
Problems with self-care	0 (0.0%)	2 (1.0%)	0 (0.0%)	1 (0.5%)	1 (0.5%)	2 (0.6%)	0 (0.0%)	2 (0.5%)
Missing	0	0	1	1	0	0	1	1
EQ-5D usual activities								
No problems during usual activities	146 (89.0%)	184 (89.8%)	55 (90.2%)	184 (86.4%)	201 (92.6%)	322 (92.0%)	63 (78.8%)	385 (89.5%)
Problems during usual activities	18 (11.0%)	21 (10.2%)	6 (9.8%)	29 (13.6%)	16 (7.4%)	28 (8.0%)	17 (21.2%)	45 (10.5%)
Missing	0	0	1	1	0	0	1	1
EQ-5D pain & discomfort								
No pain or discomfort present	124 (75.6%)	124 (61.1%)	29 (47.5%)	132 (62.3%)	145 (67.1%)	241 (69.3%)	36 (45.0%)	277 (64.7%)
Pain or discomfort present	40 (24.4%)	79 (38.9%)	32 (52.5%)	80 (37.7%)	71 (32.9%)	107 (30.7%)	44 (55.0%)	151 (35.3%)
Missing	0	2	1	2	1	2	1	3
EQ-5D anxiety & depression								
No anxiety or depression present	107 (65.2%)	144 (70.2%)	46 (75.4%)	131 (61.5%)	166 (76.5%)	241 (68.9%)	56 (70.0%)	297 (69.1%)
Anxiety or depression present	57 (34.8%)	61 (29.8%)	15 (24.6%)	82 (38.5%)	51 (23.5%)	109 (31.1%)	24 (30.0%)	133 (30.9%)
Missing	0	0	1	1	0	0	1	1
EQ-5D-5L index score								
Median (IQR)	1.00 (0.86 to 1.00)	0.89 (0.85 to 1.00)	0.89 (0.82 to 1.00)	0.89 (0.82 to 1.00)	1.00 (0.87 to 1.00)	1.00 (0.86 to 1.00)	0.88 (0.82 to 1.00)	0.89 (0.85 to 1.00)
Range	0.41 to 1.00	0.07 to 1.00	0.47 to 1.00	0.37 to 1.00	0.07 to 1.00	0.07 to 1.00	0.37 to 1.00	0.07 to 1.00
Missing	0	2	2	2	2	3	1	4
EQ VAS								
Median (IQR)	85 (80 to 90)	85 (77 to 90)	80 (70 to 88)	85 (77 to 90)	85 (79 to 90)	85 (80 to 90)	80 (70 to 89)	85 (77 to 90)
Range	20 to 100	25 to 100	24 to 95	20 to 100	24 to 100	25 to 100	20 to 97	20 to 100
Missing	2	6	2	6	4	5	5	10

Legend: DASS-21 = Depression, Anxiety and Stress Score (21 items), EQ = EuroQol, FAS = Fatigue Assessment Scale, IQR = Interquartile Range, mMRC = modified Medical

Research Council, VAS = Visual Analogue Scale.

Table 3: Healthcare use and complications at six to eight months after SARS-CoV-2 infection.

Variable	Age group			Sex		Hospitalization		Overall, N=431
	18-39 years, N=164	40-64 years, N=205	≥65 years, N=62	Female, N=214	Male, N=217	Non-hospitalized, N=350	Hospitalized, N=81	
GP visit related to COVID-19	33 (20.4%)	85 (42.7%)	32 (53.3%)	80 (38.5%)	70 (32.9%)	100 (29.2%)	50 (63.3%)	150 (35.6%)
<i>Missing</i>	2	6	2	6	4	8	2	10
Number of GP visits related to COVID-19^a								
1-2	22 (67%)	63 (75%)	21 (66%)	56 (71%)	50 (71%)	70 (71%)	36 (72%)	106 (71%)
3-5	10 (30%)	18 (21%)	8 (25%)	19 (24%)	17 (24%)	26 (26%)	10 (20%)	36 (24%)
≥6	1 (3%)	3 (4%)	3 (9%)	4 (5%)	3 (4%)	3 (3%)	4 (8%)	7 (5%)
<i>Missing</i>	0	1	0	1	0	1	0	1
Medical hotline contact related to COVID-19	16 (9.8%)	13 (6.3%)	2 (3.3%)	19 (8.9%)	12 (5.6%)	25 (7.2%)	6 (7.4%)	31 (7.2%)
<i>Missing</i>	0	0	1	0	1	1	0	1
Number of medical hotline contacts related to COVID-19^a								
1-2	14 (88%)	7 (70%)	2 (100%)	15 (88%)	8 (73%)	18 (78%)	5 (100%)	23 (82%)
3-5	2 (12%)	3 (30%)	0 (0%)	2 (12%)	3 (27%)	5 (22%)	0 (0%)	5 (18%)
≥6	0 (0%)	0 (0%)	0 (0%)	0 (0%)	0 (0%)	0 (0%)	0 (0%)	0 (0%)
<i>Missing</i>	0	3	0	2	1	2	1	3
Rehospitalizations related to COVID-19 (N=81)	1 (10%)	3 (7%)	4 (14%)	4 (11%)	4 (10%)	-	8 (10%)	8 (10%)
Number of rehospitalizations related to COVID-19^a								
1	0 (0%)	3 (100%)	4 (100%)	3 (75%)	4 (100%)	-	7 (88%)	7 (88%)
2-3	1 (100%)	0 (0%)	0 (0%)	1 (25%)	0 (0%)	-	1 (12%)	1 (12%)
GP visit or rehospitalization related to COVID-19	34 (21.0%)	85 (42.7%)	33 (55.0%)	82 (39.4%)	70 (32.9%)	100 (29.2%)	52 (65.8%)	152 (36.1%)
<i>Missing</i>	2	6	2	6	4	8	2	10
Healthcare contact related to COVID-19	45 (27.8%)	92 (46.2%)	33 (55.0%)	94 (45.2%)	76 (35.7%)	116 (33.9%)	54 (68.4%)	170 (40.4%)
<i>Missing</i>	2	6	2	6	4	8	2	10
New medical diagnoses	12 (7.3%)	47 (22.9%)	18 (29.0%)	36 (16.8%)	41 (18.9%)	43 (12.3%)	34 (42.0%)	77 (17.9%)
Type of new medical diagnosis^b								
COVID-19 related complication (medically evaluated)	2 (17%)	17 (36%)	8 (44%)	12 (33%)	15 (37%)	12 (28%)	15 (44%)	27 (35%)
COVID-19 related complication (self-evaluated)	3 (25%)	6 (13%)	2 (11%)	6 (17%)	5 (12%)	7 (16%)	4 (12%)	11 (14%)
Non COVID-19 related diagnosis or unclear	7 (58%)	24 (51%)	8 (44%)	18 (50%)	21 (51%)	24 (56%)	15 (44%)	39 (51%)

Legend: DASS-21 = Depression, Anxiety and Stress Score (21 items), EQ = EuroQol, FAS = Fatigue Assessment Scale, GP = General Practitioner, IQR = Interquartile Range, mMRC = modified Medical Research Council, VAS = Visual Analogue Scale. ^a percentage within each category of healthcare contact (general practitioner visit, medical hotline call, rehospitalisation), ^b percentage among all medical diagnoses.

Figure 1: Flow chart for the inclusion of SARS-CoV-2 infected individuals from the Canton of Zurich, diagnosed between 27 February 2020 and 05 August 2020.

Figure 2: Associations for non-recovery, fatigue, dyspnea and depression at six to eight months after SARS-CoV-2 infection.

Legend: Panel a shows associations for not having fully recovered among initially symptomatic participants from multivariable logistic regression models adjusted for age, sex, initial hospitalization, symptom severity and presence of comorbidities. Panel b demonstrates associations for presence of fatigue (based on Fatigue Assessment Scale) from models adjusted for age, sex, and initial hospitalization. Panel c displays associations for presence of dyspnea (mMRC grade ≥ 1) from models adjusted for age, sex, initial hospitalization, smoking status, respiratory comorbidity and body mass index. Panel d shows associations for presence of depressive symptoms (based on DASS-21) from models adjusted for age, sex, initial hospitalization and symptom severity.

Figure 3: Associations for healthcare service utilization at six to eight months after SARS-CoV-2 infection.

Legend: Figure 3 shows associations for having at least one further healthcare contact after initial COVID-19, based on multivariable logistic regression models adjusted for age, sex, initial hospitalization, and initial symptom severity.

PCR-confirmed SARS-CoV-2 cases reported to public health authorities between 27 Feb 2020 and 05 Aug 2020 (n=4639)

Excluded (n=3322)

- Could not be contacted (n=2430)
- Did not meet eligibility criteria (n=733)
 - No consent to be contacted for study purposes (n=399)
 - Insufficient knowledge of the German language (n=173)
 - Aged <18 years (n=159)
 - Not residing in the Canton of Zurich (n=2)
- No information on age (n=12)
- No contact tracing performed (n=7)
- Deceased (n=140)

medRxiv preprint doi: <https://doi.org/10.1101/2021.02.27.21252572>; this version posted March 24, 2021. The copyright holder for this preprint (which was not certified by peer review) is the author/funder, who has granted medRxiv a license to display the preprint in perpetuity. It is made available under a [CC-BY-NC-ND 4.0 International license](https://creativecommons.org/licenses/by-nc-nd/4.0/).

SARS-CoV-2 cases eligible for recruitment (n=1317)

Excluded due to study capacity (n=8)

Invited SARS-CoV-2 cases (n=1309)

Excluded (n=790)

- Could not be contacted (n=441)
- Declined (n=263)
- Insufficient knowledge of the German language (n=39)
- Unable to follow study procedures (n=35)
- Deceased (n=7)
- False positive test (n=3)
- Not residing in the Canton of Zurich (n=2)

Not invited, enrolled via invitation letter from other study participant (n=2)

Interested to participate in the study (n=521)

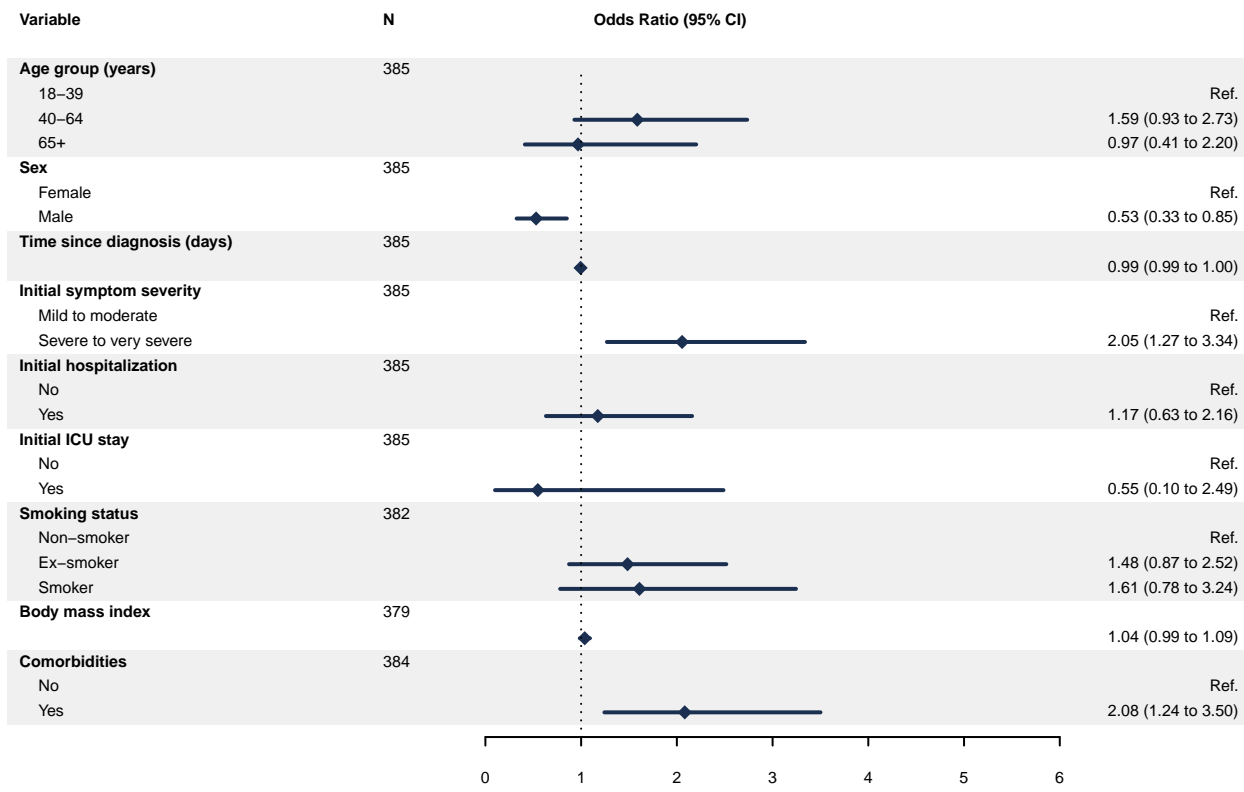
Consented to participate in the study (n=442)

Excluded (n=11)

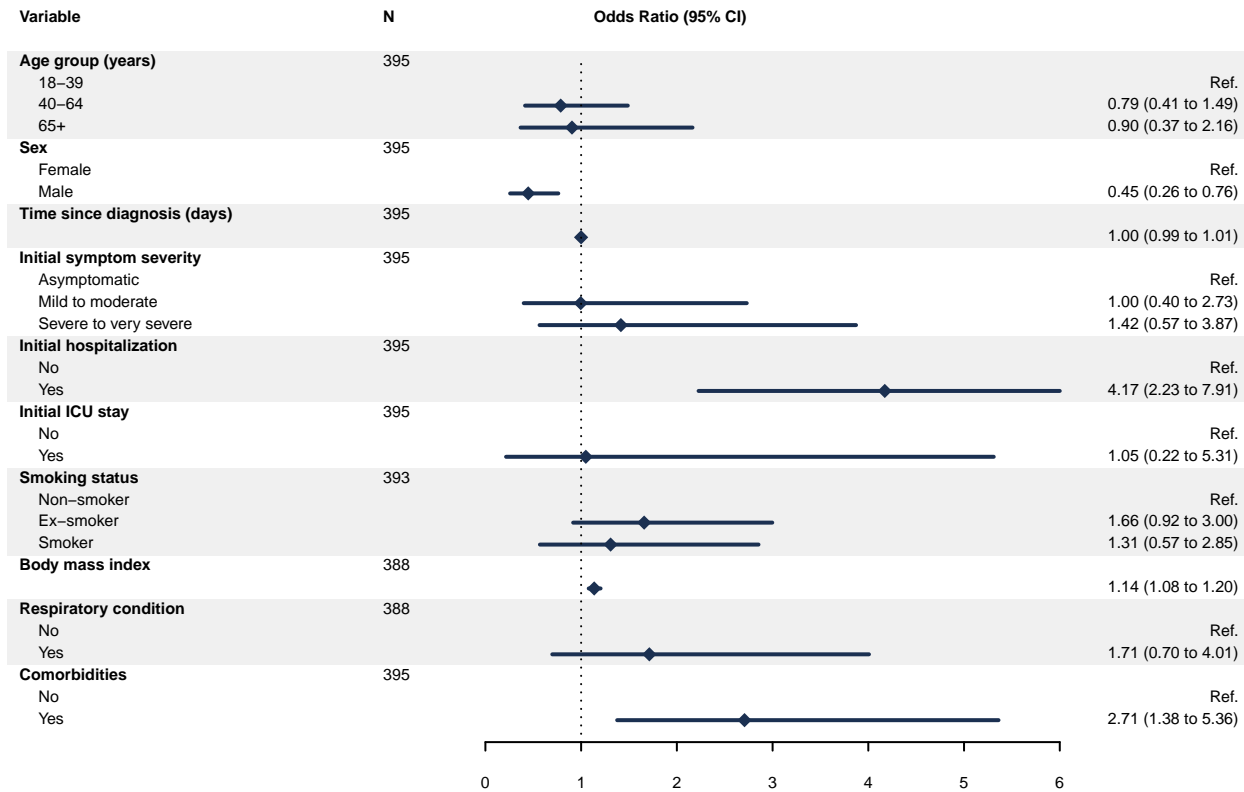
- Suspected reinfection (n=6)
- Did not complete questionnaire (n=5)

Included in analysis (n=431)

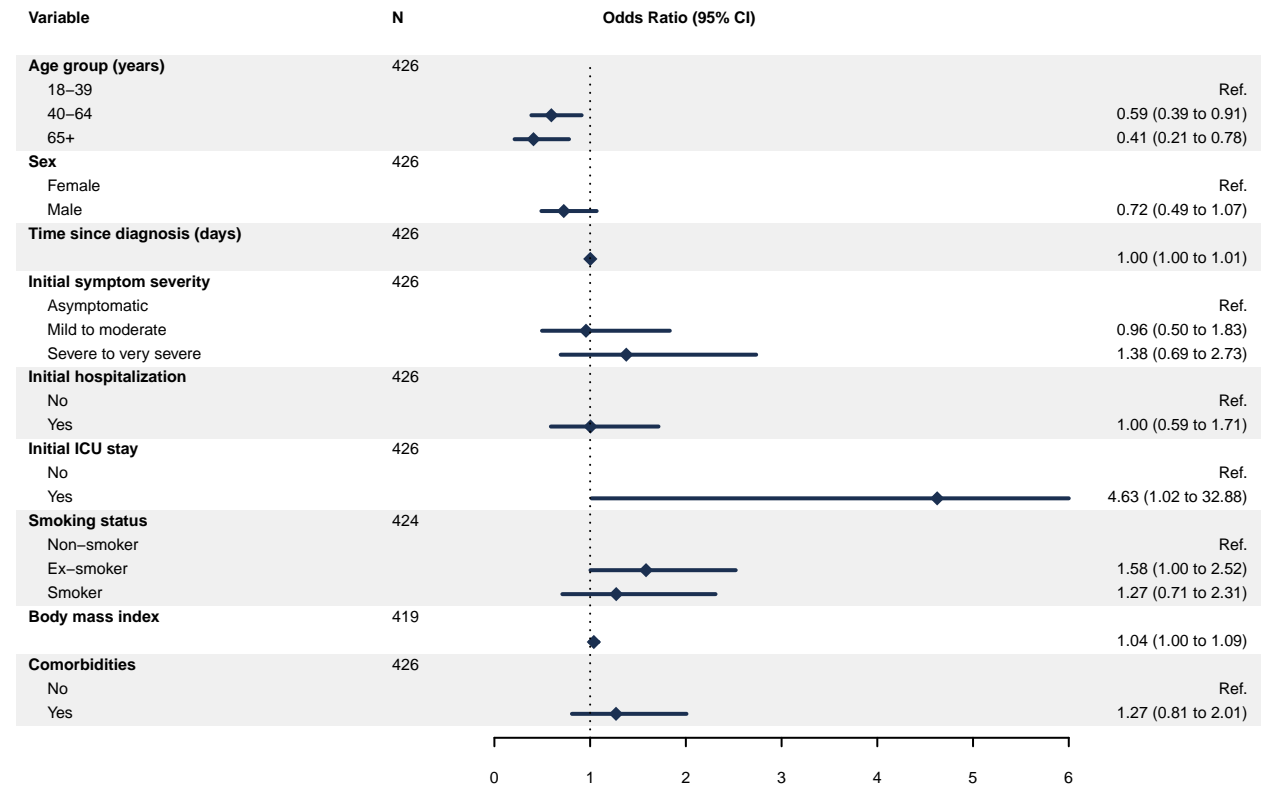
a Non-Recovery



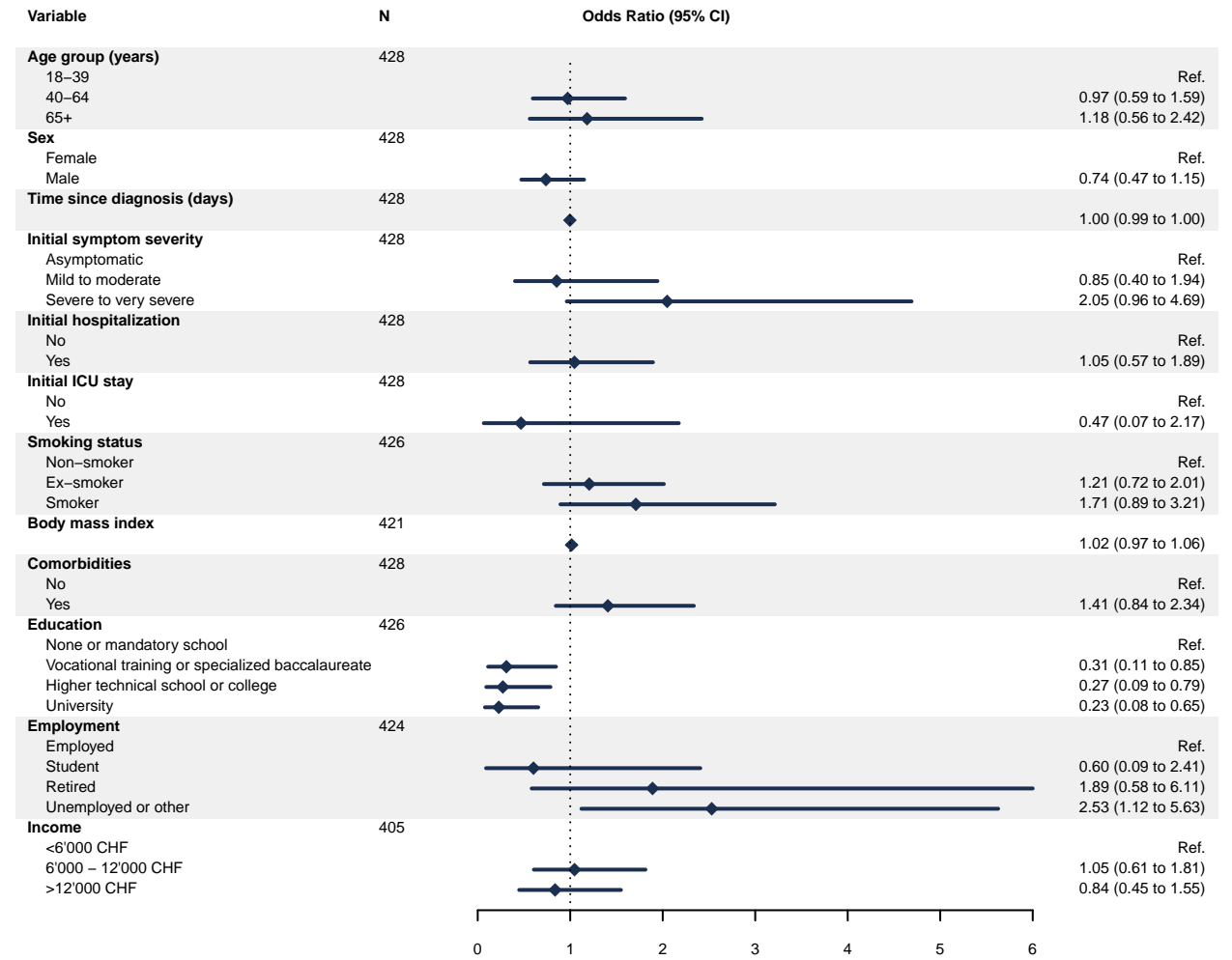
c Dyspnea



b Fatigue



d Depression



Healthcare use

