

Arbidol treatment with reduced mortality of adult patients with COVID-19 in Wuhan, China: a retrospective cohort study

Qibin Liu^{1*}, Xuemin Fang^{2*}, Lu Tian^{3*}, Naveen Vankadari⁴, Xianxiang Chen⁵, Ke Wang⁶, Dan Li⁷, Xiyong Dai⁸, Feng Xu⁹, Lei Shen¹⁰, Bing Wang¹¹, Li Yao¹², Peng Peng^{13#}

¹ Wuhan Pulmonary Hospital, Wuhan Institute for Tuberculosis Control, No. 28 Baofeng Road, Qiaokou District, Wuhan City, Hubei Province, China; Liuqibin0221@163.com

² Graduate School of Health Innovation, Kanagawa University of Human Services, 2F Bldg.2-A, 3-25-10, Tonomachi Kawasaki-ku, Kawasaki City, Kanagawa 210-0821, Japan, m.fanfg-ft5@kuhs.ac.jp

³ Department of Biomedical Data Science, Stanford University, CA 94305, USA, lutian@stanford.edu

⁴ Monash Biomedicine Discovery Institute and Department of Biochemistry and Molecular Biology, Monash University, Melbourne, Victoria 3800, Australia. Naveen.vankadari@monash.edu

⁵ Wuhan Pulmonary Hospital, Wuhan Institute for Tuberculosis Control, No. 28 Baofeng Road, Qiaokou District, Wuhan City, Hubei Province, China; 2272534937@qq.com

⁶ Department of Pulmonary and Critical Care Medicine, Tongji Hospital, Huazhong University of Science and Technology, 1095 Jiefang Avenue, 430030, Wuhan City, Hubei Province, China, Chinawangke13409@163.com

⁷ Department of Pediatric Surgery, Union Hospital, Huazhong University of Science and Technology, 1277 Jiefang Avenue, 430022, Wuhan City, Hubei Province, China, D201478239@alumni.hust.edu.cn

⁸ Wuhan Pulmonary Hospital, Wuhan Institute for Tuberculosis Control, No. 28 Baofeng Road, Qiaokou District, Wuhan City, Hubei Province, China, daixiyong71@126.com

⁹ Wuhan Pulmonary Hospital, Wuhan Institute for Tuberculosis Control, No. 28 Baofeng Road, Qiaokou District, Wuhan City, Hubei Province, China, victor_fsxq@163.com

¹⁰ Wuhan Pulmonary Hospital, Wuhan Institute for Tuberculosis Control, No. 28 Baofeng Road, Qiaokou District, Wuhan City, Hubei Province, China, shen0811@aliyun.com

¹¹ Wuhan Pulmonary Hospital, Wuhan Institute for Tuberculosis Control, No. 28 Baofeng Road, Qiaokou District, Wuhan City, Hubei Province, China, 779238021@qq.com

¹² Wuhan Pulmonary Hospital, Wuhan Institute for Tuberculosis Control, No. 28 Baofeng Road, Qiaokou District, Wuhan City, Hubei Province, China, 354608920@qq.com

¹³ Wuhan Pulmonary Hospital, Director, Wuhan Institute for Tuberculosis Control, No. 28 Baofeng Road, Qiaokou District, Wuhan City, Hubei Province, China, pengpengwg@126.com

*Authors contributed equally

#Correspondence: pengpengwg@126.com (Tel.:+86-027-83605535)

BACKGROUND

NOTE: This preprint reports new research that has not been certified by peer review and should not be used to guide clinical practice.

The worldwide COVID-19 pandemic is increasing exponentially and demands an effective and promising therapy at most emergency.

METHODS

We have assembled a cohort consisting 504 hospitalized COVID-19 patients. Detailed information on patients' characteristics and antiviral medication use during their stay at designated hospitals along with their pre and post treatment results were collected.

The study objective is to evaluate the treatment efficacy of Arbidol, together with the concurrent drugs Oseltamivir and Lopinavir/Ritonavir on mortality and lesion absorption based on chest CT scan.

FINDINGS

The overall mortality rate was 15.67% in the cohort. The older age, lower SpO₂ level, larger lesion, early admission date, and the presence of pre-existing conditions were associated with higher mortality. After adjusting for the patients age, sex, pre-existing condition, SpO₂, lesion size, admission date, hospital, and concurrent antiviral drug use, Arbidol was found promising and associated with reduced mortality. The OR for Arbidol is 0.183 (95% CI, 0.075 to 0.446; $P < 0.001$). Furthermore, Arbidol is also associated with faster lesion absorption after adjusting for patient's characteristics and concurrent antiviral drug use ($P = 0.0203$).

INTERPRETATION

The broad-spectrum antiviral drug Arbidol was found to be associated with faster

4 Introduction

5 Since the first discovery of novel coronavirus disease 2019 (COVID-19) in Wuhan (China) in
6 December 2019,¹ more than 4.8 million people were infected and over 323,000 have died
7 across the globe as of May 22, 2020,^{2,3} The world-wide rapid spread of the infection with
8 limited therapeutic options is leading to a global health emergency. Meanwhile scientists and
9 researchers are racing with time testing a huge variety of new and existing treatments. As of
10 April 8, 2020, there were 388 ongoing studies on COVID-19 that are recorded in the U.S.
11 National Library of Medicine of the NIH,⁴ including studies involving plasma, stem cells, and
12 antiviral drugs, etc. For example, Liu et al (2020) presented preliminary results for 39 patients
13 suggesting a potential benefit of convalescent plasma treatment in reducing mortality.⁵

14 Much attention has been drawn to a few promising candidates, namely Remdesivir,
15 Lopinavir/Ritonavir, Hydroxychloroquine, Favipiravir and Umifenovir (Arbidol), however
16 most completed studies so far had negative results. Mehra et al (2020) reported a
17 multinational registry analysis of 96,032 patients and showed the use of Hydroxychloroquine
18 or Chloroquine was associated with decreased in-hospital survival and increased ventricular
19 arrhythmias;⁶ Geleris et al (2020) also reported the result of an observational study of 1446
20 patients showing Hydroxychloroquine was not associated with significant benefit on a
21 composite endpoint of intubation or death;⁷ Cao et al (2020) reported that no benefit was
22 observed with Lopinavir/Ritonavir treatment beyond standard care in a randomized,
23 controlled, open-label trial with 199 patients.⁸ Chen et al (2020) reported a randomized
24 clinical trial of 240 patients comparing Favipiravir with Arbidol, and found that Favipiravir
25 did not significantly improve the clinical recovery rate at Day 7 as compared to Arbidol.⁹

26 Remdesivir has been regarded as one of the most promising drug candidates, with a total of
27 three trial results becoming available so far.¹⁰⁻¹² It was found to be superior to placebo in
28 shortening the time to recovery, but its effect on the mortality was not statistically
29 significant.¹¹ We are still nowhere close to finding the best cure.

30 In the search for effective COVID-19 therapies, most researchers are targeting ACE2 and
31 RdRp, but recent findings also suggest CD26 (DPP4) as another possible target.^{13,14} Viral
32 entry is mediated via several pathways and it may not solely depend on the ACE2 which
33 warrants testing other host targets. Recently, Vankadari (2020) reported the binding and
34 mechanism of Arbidol action over the SARS-CoV-2 spike protein, which raises the
35 significance of Arbidol being a possible drug candidate for COVID-19 infection.¹⁵

36 In this study, we aim to evaluate the clinical effect of Arbidol with a retrospective cohort of
37 COVID-19 patients from Wuhan. We have also conducted molecular dynamics and time
38 course simulation studies in order to understand the mechanism of the Arbidol drug action
39 over the SARS-CoV-2 viral proteins.

40

41 **Methods**

42 **Study design and participants**

43 We have assembled a cohort consisting 504 in-patients with COVID-19 from three hospitals
44 in Wuhan: Wuhan Pulmonary Hospital (WPH), Tongji Hospital, and Union Hospital. All three
45 were designated COVID-19 hospitals during the outbreak. The study protocols were reviewed
46 and approved by the Ethics committee of WPH (WPE 2020-12). Patient records and
47 information were de-identified prior to the analysis.

48 Figure 1 shows the diagram of cohort design and patient selection. For WPH, we started with
49 all COVID-19 patients admitted between December 13, 2019 and March 21, 2020 and
50 excluded patients with ambiguous diagnosis as well as those with a primary cause of death
51 unrelated to COVID-19. After further excluding 119 patients who remained being
52 hospitalized by March 29, 2020, 373 patients from WPH were included. For Tongji Hospital,
53 100 COVID-19 patients admitted into two randomly selected hospital wards between
54 February 1, 2020 and February 5, 2020 were included. Similarly, for Union Hospital, 31
55 COVID-19 patients admitted into a randomly selected ward between January 26, 2020 and
56 February 24, 2020 were included. All patients in the study cohort have definitive outcomes,
57 i.e., discharged or deceased. All COVID-19 infections are confirmed by Real-Time PCR
58 (virus nucleic acid test).

59 **Patients characteristics, medication and endpoints**

60 We collected data on patients' clinical outcomes (death or discharge) as well as basic
61 characteristics, including age, sex, pre-existing conditions, SpO₂ level at hospital admission,
62 use of oxygen and ventilators during the hospital stay, and patient's pre and post treatment
63 lung CT scan images.

64 The drug treatment options used in all three hospitals followed the Chinese National Health
65 Commission's evolving guideline for the treatment of COVID-19, "New Corona Virus
66 Pneumonia Diagnosis and Treatment Program". The majority of the patients received
67 Lopinavir/Ritonavir, Arbidol and Oseltamivir. With the development of the epidemic and the
68 guideline updates, Hydroxychloroquine and Favipiravir were also used to a small number of
69 patients. The prescription of antiviral medications and their administration time for each
70 patient were extracted from electronic medical records with written consents from the

71 clinicians. In this study, we specifically focus on three anti-viral medications, Arbidol,
72 Oseltamivir, and Lopinavir/Ritonavir.

73 The primary endpoint is in-hospital death, with date of death extracted from the medical
74 records. The secondary endpoint is the change in lesion size as measured by CT scans pre and
75 post the antiviral treatment. CT scan images were read by certified thoracic radiologists at the
76 respective hospitals to determine lesion size. The pre-treatment image was selected as the first
77 CT image after the patient's admission but before the initiation of the regular full-course
78 antiviral treatment. The post-treatment image was selected as the last CT scan taken before
79 patient's death or discharge, which is normally after completing the antiviral therapy cycle. To
80 ensure the comparability of the two CT images, we identified the plane with the largest lesion
81 in the pre-treatment CT scan, and used the same plane in the post-treatment CT scan. The
82 lesion in the selected plane was circled and size measured by the ImageJ software (Figure 2).¹⁶

83 **Statistical analysis**

84 Continuous and dichotomous patient characteristics were summarized by their mean (standard
85 deviation (SD)), and count (proportion), respectively. We compared the mortality rate
86 between patients who received Arbidol, or Oseltamivir, or Lopinavir/Ritonavir and those who
87 did not using Fisher's exact test. We then employed the logistic regression to estimate the
88 odds ratio (OR) associated with the treatment after adjusting sex, pre-existing condition,
89 medication use, hospital, and log-transformed age, SpO2 level, admission date and the lesion
90 size from the pre-treatment CT scan. Missing covariates were imputed by the medians of the
91 observed values. We also repeated the logistic regression for patients in WPH only, where the
92 potential sampling bias was the lowest. In addition, we performed Cox regression analyses
93 with time dependent covariates, setting value to 0 and 1 before and after the medication
94 prescription, respectively, to account for the timing of medication use.¹⁷ We also conducted
95 linear regression analyses with the log-transformed ratio of lesion area absorption pre and
96 post the antiviral treatments. A small value of one was added to all lesions sizes to avoid log-
97 transformation of zero. The two-sided statistical significance level was set at 0.05. All
98 statistical analyses were conducted using the R 3.3.1 software.

99 **Arbidol binding analysis**

100 Docking studies with Arbidol and its binding analysis to SARS-CoV-2 spike glycoprotein was
101 performed as described in Vankadari (2020).¹⁵ In brief, SwissDock
102 (<http://swissdock.ch/docking>) server was used to dock the Arbidol into the published structure
103 of SARS-CoV-2 spike glycoprotein trimer (PDB: 6VSB). Structural refinement was
104 completed using Coot (www.mrc-imb.cam.ac.uk/) to ensure no clashes in the side chain
105 residues. Best dock score and highest binding free energies were taken into consideration to
106 select the best-possible docking site and mode of interaction. Arbidol binding interface and

107 the key residues interaction map was generated using the Maestro program. The molecular
108 dynamics with time course simulation studies were performed using DynOmics server ([www.
109 http://gnm.csb.pitt.edu/](http://gnm.csb.pitt.edu/)). The final model with Arbidol docked in the homotrimer structure of
110 SARS-CoV-2 spike protein and all other structural figures were visualized using PyMol.

111 **Role of the funding source**

112 The authors report no funding.

113

114 **Results**

115 **Cohort baseline characteristics**

116 The cohort consists of 504 patients with confirmed COVID-19 infection from three hospitals:
117 373 patients from WPH, 100 patients from the Tongji Hospital, and 31 patients from the
118 Union hospital. Table 1 summarizes main drug treatment options administrated during
119 patient's stay at the respective hospital. 257 patients received Arbidol (51.0%); 66 patients
120 received Oseltamivir (13.1%); and 259 patients received Lopinavir/Ritonavir (51.4%). The
121 majority of the patients received two or more different treatments during their hospitalization.

122 Among the 504 patients, 245 (48.6%) were female, and 262 (52.0%) had pre-existing
123 conditions. The average age of the cohort was 59.5 (SD, 14.9) years old. The average Oxygen
124 level (SpO₂) at admission was 92.8% (9.3%). Patients who received Arbidol had slightly
125 higher SpO₂ level and smaller lesion area compared to other patients. Patients who received
126 Oseltamivir were younger. In contrast, patients who received Lopinavir/Ritonavir had more
127 pre-existing conditions. Patients admitted to the hospital early were more likely to receive
128 Oseltamivir and Lopinavir/Ritonavir. Table 2 summarizes the baseline patients characteristics
129 by hospital.

130 **The association between the treatments and mortality**

131 For the cohort of 504 patients, the overall mortality rate was 15.67%. The mortality rate was
132 9.39% among females, 21.62% among males. The mortality rate was 20.23% among patients
133 with pre-existing conditions, and 10.74% among patients without pre-existing conditions. The
134 mortality rate was 17.96% in WPH, 12.00% in Tongji Hospital, and 0% in Union hospital. In
135 this cohort, older age, lower SpO₂ level at admission, larger lesion, and early admission date
136 were associated with higher mortality.

137 The mortality rate was 7.00% among patients who received Arbidol compared to 24.70%
138 among patients who did not. The odds ratio (OR) was 0.230 (95% confidence interval (CI),
139 0.124 to 0.411) favoring Arbidol. On the other hand, the mortality rate was 12.12% among
140 patients who received Oseltamivir, compared to 16.21% among patients who did not. The OR

141 was 0.713 (95% CI, 0.282 to 1.589) favoring Oseltamivir. The mortality rate was 14.29%
142 among patients who received Lopinavir/Ritonavir, compared to 17.14% among patients who
143 did not. The OR was 0.806 (95% CI, 0.483 to 1.341) favoring Lopinavir/Ritonavir. After
144 adjusting for sex, pre-existing conditions, log(age), log(SpO₂), log(lesion size), log(admission
145 date) and hospital (model 1) using a multivariate logistic regression model, the OR was 0.169
146 (95% CI, 0.071 to 0.398) for Arbidol, 0.212 (95% CI, 0.072 to 0.623) for Oseltamivir, and
147 0.363 (95% CI, 0.165 to 0.795) for Lopinavir/Ritonavir. After further adjustment of
148 concurrent antiviral medications (model 2), the beneficial effect of Arbidol and Oseltamivir
149 have remained statistically significant: the adjusted OR was 0.183 (95% CI, 0.075 to 0.446;
150 $p < 0.001$) for Arbidol and 0.220 (95% CI, 0.069 to 0.707; $P = 0.011$) for Oseltamivir (Figure
151 3A).

152 **The association between the treatments and the reduction of lung lesion sizes**

153 There were 326 survivors with two available CT scans. The average reductions in lesion size
154 were 46.43% (SD: 29.00%) among the 209 patients who received Arbidol and 36.80% (SD:
155 24.95%) among the 117 patients who did not. The average reduction among the 55 patients
156 who received Oseltamivir was less than that among the 271 patients who did not (41.18% vs
157 43.34%). The reduction among the 186 patients who received Lopinavir/Ritonavir was also
158 less than the 140 patients who did not (37.26% vs. 50.56%). After adjusting for patients'
159 characteristics and concurrent antiviral drug use using a multivariate linear regression model,
160 the ratio of the lesion size (post-treatment to pre-treatment) among patients who received
161 Arbidol was 85.20% (95% CI, 74.47% to 97.48%; $P = 0.0203$) of that among patients who did
162 not, suggesting a faster lesion absorption. Figure 3B summarized the linear regression
163 analysis results for all three antiviral drugs. Figure 4A shows the boxplots of the lesion
164 absorptions in the stratified subgroups of patients by the three antiviral drugs, with patients
165 who received Arbidol (dark turquoise) showing more absorption than patients who did not
166 (light turquoise).

167 **Subgroup analysis in WPH**

168 For the 373 patients in WPH, the mortality rate was 7.09% among patients who received
169 Arbidol vs. 24.57% among patients who did not (OR=0.234, 95% CI, 0.103 to 0.481,
170 $P < 0.001$). After adjusting for sex, pre-existing condition, log(age), log(SpO₂), log(lesion
171 area), log(admission date), and concurrent antiviral drug use using a multivariate logistic
172 regression model, Arbidol was associated with significantly reduced mortality (OR, 0.193;
173 95% CI, 0.071 to 0.520, $P = 0.001$). The effect of Oseltamivir was marginally significant (OR,
174 0.326; 95% CI, 0.090 to 1.177; $P = 0.087$). Figure 3C summarized detailed results.

175 **Survival analysis**

176 Among the patients who received Arbidol, the median prescription time was 1.50 (IQR: 0.50-

177 2.50, range, 0.50-31.50) days after admission. For Oseltamivir and Lopinavir/Ritonavir, the
178 median prescription time was 0.50 (IQR: 0.50 to 1.50, range, 0.50-25.50) and 0.50 (IQR:
179 0.50 to 2.50, range, 0.50-32.50) days after admission, respectively. After adjusting for
180 baseline characteristics and concurrent antiviral drug use using a multivariate cox
181 proportional hazard ratio model, the hazard ratio was 0.350 (95% CI, 0.177 to 0.689;
182 $P=0.002$) for Arbidol, 0.571 (95% CI, 0.269 to 1.211) for Oseltamivir, and 0.720 (95% CI,
183 0.426 to 1.218) for Lopinavir/Ritonavir based on Cox regression stratified by hospitals
184 (Figure 3D). Figure 4B shows the cumulative mortality curves for the three antiviral drugs.
185 There is a significant difference between the mortality curve for patients who received
186 Arbidol versus patients who did not ($P < 0.001$) whereas the differences are not statistically
187 significant for Oseltamivir ($P = 0.34$) and Lopinavir/Ritonavir ($P = 0.33$).

188 **Arbidol and SARS-CoV-2 spike glycoprotein interaction**

189 It is evident from the previous studies that Arbidol is potentially effective against SARS-
190 CoV-2.¹³ The recent structural studies of Arbidol in complex with SARS-CoV-2 spike
191 glycoprotein underlines its role in impeding trimerization,¹⁵ which is essential for virulence.
192 Here we address how this drug disrupts the viral spike glycoprotein through comprehensive
193 drug interaction via molecular dynamics and time course simulation studies. As shown in
194 Figure 5A, each monomer of spike glycoprotein consists of large surface for drug interaction
195 and it could completely accommodate the drug in the trimer interface (Figure 5A and 5B).
196 The time course simulation and drug interaction studies show that the Arbidol disrupt the
197 interface in all directions and its binding affinity found to be very high (Figure 5C). The
198 interaction is not only mediated by hydrogen bonding and van-der Waal forces but also by
199 several polar residues bridge with the spike glycoproteins (Figure 5D). Furthermore, the
200 dynamic simulation and domain movement or oscillation studies show that binding of Arbidol
201 to the spike glycoprotein increases the B-factor (stability factor) (Figure 5E), suggesting
202 protein is under higher movement and is less stable or tend to dissociate from other
203 monomers. These structural and molecular dynamic studies further corroborate our clinical
204 finding of CT scans showing greater viral clearance observed with Arbidol treatment.

205

206 **Discussion**

207 The study showed promising treatment effect of Arbidol on mortality and lesion absorption.
208 On the other hand, the benefit of Lopinavir/Ritonavir is inconclusive, which is consistent with
209 the previous finding of Cao et al. (2020), where Lopinavir/Ritonavir has reduced the mortality
210 from 25.0% to 19.2% in a randomized clinical trial, but failed to reach the statistical
211 significance threshold.⁸ Recently, Xu et al, (2020) reported that the virologic conversion rate

212 in 49 patients who received Arbidol was significantly higher than that in 62 patients who
213 received the standard care (59.2% vs 40.3%, $P=0.048$).¹⁹ In this study, the patients who
214 received Arbidol also had faster lung lesion absorption (55.1% vs 32.2%). Despite the limited
215 sample size, their results further corroborated our findings. The dual role of Arbidol in
216 inhibiting the fusion between the viral envelope and target host cell membrane as well as anti-
217 inflammation could be responsible for its observed efficacy.^{20, 21}

218 Oseltamivir is normally prescribed for the treatment of influenza and has no known effect on
219 COVID-19 patients. However, some patients have been infected by both COVID-19 and
220 Influenza,²² which may exacerbate their clinical conditions. It is very likely that a
221 combination of drugs or therapy including Oseltamivir can help this subgroup of patients due
222 to the effectiveness of Oseltamivir in treating severe illness caused by Influenza. In addition,
223 SARS-CoV-2 and influenza viruses share a similar region of viral spike protein, which may
224 also explain the potential effect of Oseltamivir in treating COVID-19 patients.¹³

225 There are some important limitations in the current study. First, the study is not a randomized
226 clinical trial, and therefore the observed treatment benefit of Arbidol and Oseltamivir may be
227 due to confounding effect. The analysis has adjusted for several known confounders including
228 age, comorbidities, admission date, and disease severity measured through SpO₂ and CT
229 scan. Furthermore, given the size of the estimated treatment effect, the unmeasured
230 confounding effect needs to be very strong to completely account for this benefit. Second, we
231 didn't account for the effect of important supporting treatment such as oxygen and ventilator
232 use. Their availability and deployment may affect the estimated treatment effect. Third,
233 although the cohort size is 504, the patients from Tongji and Union Hospitals are not
234 necessarily the most representative samples of patients admitted into these hospitals. For
235 example, ICU patients in these two hospitals are not included. We have also excluded
236 surviving patients not yet discharged from WPH by March 29, 2020, and consequently, the
237 observed mortality rate among patients from WPH is substantially higher than that from
238 Tongji and Union Hospitals. These sampling biases may affect the interpretation and
239 generalizability of our findings. For example, the reported mortality rate doesn't represent the
240 absolute mortality rate in the patients admitted into relevant hospital. Furthermore, there are
241 only 33 patients who received both Arbidol and Oseltamivir in the entire cohort, which limits
242 the reliability of the estimated treatment benefit associated with the combination therapy. On
243 the other hand, despite the limited sample size and selective sampling, all identified risk
244 factors in the current study are consistent with other studies,^{22,23} which indirectly supports our
245 findings on the treatment efficacy. The association between admission date and mortality can
246 also be explained by the availability of medical resources. Lastly, regarding the adverse
247 events, nausea was observed in a small group of patients who received Arbidol. Loss of
248 appetite was observed in patients who received Oseltamivir. Whereas Diarrhea, nausea,
249 vomiting, loss of appetite and decreased sleep quality were observed in patients who received
250 Lopinavir/Ritonavir. Due to the difficulty in accurate and complete documentation of all

251 adverse events during the pandemic, the study team did not summarize these data in this
252 report. Nevertheless, it is known that the severe adverse effects associated with the use of
253 Arbidol and Oseltamivir have been very rare.^{21,24}
254 Arbidol is originated from Russia as a broad-spectrum antiviral drug and is now widely used
255 in Russia as an OTC drug and in China as a prescription drug. Although Arbidol was reported
256 to effectively shorten the duration of influenza and prevent the development of post-influenza
257 complications, reduce the re-infection risk based on multiple clinical trials conducted in
258 Russia and China,²⁵ due to lack of detailed information regarding these trials, WHO suggested
259 that the results should be interpreted with caution.²⁶ Consequently, Arbidol has not received
260 FDA approval in the United States and the use of Arbidol in other parts of the world has been
261 limited. However, while drafting this manuscript, we have found that eight clinical trials
262 (NCT04350684, NCT04286503, NCT04260594, NCT04273763, NCT04323345,
263 NCT04261907, NCT04306497, NCT04333589) in China, Iran and Egypt involving Arbidol
264 in treating COVID-19 patients were registered at www.clinicaltrial.gov.

265 In conclusion, our clinical and molecular biological findings suggest that Arbidol might be a
266 potentially effective treatment for COVID-19. Further clinical studies including RCTs are
267 warranted for statistical and clinical evaluation of its efficacy.

268

269 **References**

- 270 1. Chen N, Zhou M, Dong X, et al. Epidemiological and clinical characteristics of 99 cases
271 of 2019 novel coronavirus pneumonia in Wuhan, China: a descriptive study. *Lancet* 2020
272 Feb 15;395(10223):507-513. doi: [https://doi.org/10.1016/S0140-6736\(20\)30211-7](https://doi.org/10.1016/S0140-6736(20)30211-7). Epub
273 2020 Jan 30.
- 274 2. WHO Coronavirus disease (COVID-2019) situation reports.
275 <https://www.who.int/emergencies/diseases/novel-coronavirus-2019/situation-reports>
276 (accessed May 22,2020)
- 277 3. Xie M, Chen Q. Insight into 2019 novel coronavirus - an updated interim review and
278 lessons from SARS-CoV and MERS-CoV. *Int J Infect Dis.* 2020 Apr 1. pii: S1201-
279 9712(20)30204-6. doi: <https://doi.org/10.1016/j.ijid.2020.03.071>. [Epub ahead of print]
- 280 4. Vanden EJ. COVID-19: A Brief Overview of the Discovery Clinical Trial.
281 *Pharmaceuticals (Basel)* 2020 Apr 10;13(4):E65. doi:
282 <https://doi.org/10.3390/ph13040065>.
- 283 5. Liu S, Lin H, Baine I, et al. Convalescent plasma treatment of severe COVID-19: A
284 matched control study. medRxiv preprint doi:
285 <https://doi.org/10.1101/2020.05.20.20102236>.
- 286 6. Mehra MR, Desai SS, Frank R, et al. Hydroxychloroquine or chloroquine with or without
287 a macrolide for treatment of COVID-19: a multinational registry analysis. *The Lancet.*
288 2020 May 22. doi: [https://doi.org/10.1016/S0140-6736\(20\)31180-6](https://doi.org/10.1016/S0140-6736(20)31180-6)
- 289 7. Geleris J, Sun Y, Platt J, et al. Observational Study of Hydroxychloroquine in
290 Hospitalized Patients with Covid-19. *N Engl J Med.* 2020 May 7. doi:
291 <https://doi.org/10.1056/NEJMoa2012410>
- 292 8. Cao B, Wang Y, Wen D, et al. A Trial of Lopinavir–Ritonavir in Adults Hospitalized with
293 Severe Covid-19. *N Engl J Med.* 2020 Mar 18. doi:
294 <https://doi.org/10.1056/NEJMoa2001282>. [Epub ahead of print]
- 295 9. Chen C, Zhang Y, Huang J, et al. Favipiravir versus Arbidol for COVID-19: A
296 Randomized Clinical Trial. medRxiv preprint doi:
297 <https://doi.org/10.1101/2020.03.17.20037432>.
- 298 10. Grein J, Ohmagari N, Shin D, Diaz G, Asperges E, Castagna A. Compassionate Use of
299 Remdesivir for Patients with Severe Covid-19. *N Engl J Med.* 2020 April 10, at
300 NEJM.org. doi: <https://doi.org/10.1056/NEJMoa2007016>
- 301 11. Beigel JH, Tomashek KM, Dodd LE, et al. Remdesivir for the Treatment of Covid-19 —
302 Preliminary Report. *N Engl J Med.* 2020 May 22, doi:

- 303 <https://doi.org/10.1056/NEJMoa2007764>
- 304 12. Wang Y, Zhang D, Du G, Du R, Zhao J, Jin Y. Remdesivir in Adults With Severe COVID-
305 19: A Randomised, Double-Blind, Placebo-Controlled, Multicentre Trial. *Lancet*. 2020
306 May 16;395(10236):1569–1578. doi: [https://doi.org/10.1016/S0140-6736\(20\)31022-9](https://doi.org/10.1016/S0140-6736(20)31022-9).
307 Epub 2020 Apr 29.
- 308 13. Vankadari N, Wilce JA. Emerging COVID-19 coronavirus: glycan shield and structure
309 prediction of spike glycoprotein and its interaction with human CD26. *Emerging*
310 *Microbes & Infections* 9:1, pages 601–604. 2020
- 311 14. Li, Y, Zhang, Z, Yang, L, et al. The MERS-CoV receptor DPP4 as a candidate binding
312 target of the SARS-CoV-2 spike, *ISCIENCE* (2020), doi:
313 <https://doi.org/10.1016/j.isci.2020.101160>.
- 314 15. Vankadari N. Arbidol: A potential antiviral drug for the treatment of SARS-CoV-2 by
315 blocking the trimerization of viral spike glycoprotein? *International Journal of*
316 *Antimicrobial Agents* 105998 (2020) doi:
317 <https://doi.org/10.1016/j.ijantimicag.2020.105998>.
- 318 16. Image manipulation and analysis software: ImageJ freeware obtained
319 from <http://imagej.nih.gov/ij/>.
- 320 17. Xu R, Luo Y, Chambers C. 2012. Assessing the effect of vaccine on spontaneous abortion
321 using time- dependent covariates Cox models. *Pharmacoepidemiology and drug*
322 *safety*, 21(8), pp.844–850.
- 323 18. Wang X, Cao R, Zhang H, et al. The anti-influenza virus drug, arbidol is an efficient
324 inhibitor of SARS-CoV-2 in vitro. *Cell Discov* 6, 28 (2020).
325 <https://doi.org/10.1038/s41421-020-0169-8>
- 326 19. Xu K, Chen Y, Yuan J, Yi P, Ding C, Wu W. Clinical Efficacy of Arbidol in Patients with
327 2019 Novel Coronavirus-Infected Pneumonia: A Retrospective Cohort Study (2020 Feb
328 12). Available at <http://dx.doi.org/10.2139/ssrn.3542148>
- 329 20. Proskurnina E, Izmailov D, Sozarukova M, Zhuravleva T, Leneva I, Poromov A.
330 Antioxidant Potential of Antiviral Drug Umifenovir. *Molecules*. 2020 Mar 30;25(7). pii:
331 E1577. doi: <https://doi.org/10.3390/molecules25071577>.
- 332 21. Blaising J, Polyak SJ, Pécheur EI. Arbidol as a broad-spectrum antiviral: An
333 update. *Antiviral Res*. 2014;107(1):84–94. doi:
334 <https://doi.org/10.1016/j.antiviral.2014.04.006>.
- 335 22. Ding Q, Lu P, Fan Y, Xia Y, Liu M. The clinical characteristics of
336 pneumonia patients coinfecting with 2019 novel coronavirus and influenza virus

337 in Wuhan, China. *J Med Virol*. 2020 Mar 20. doi: <https://doi.org/10.1002/jmv.25781>.
338 [Epub ahead of print]

339 23. Zhou F, Yu T, Du R, Fan G, Liu Y, Liu Z. Clinical course and risk factors for
340 mortality of adult inpatients with COVID-19 in Wuhan, China: a retrospective cohort
341 study. *Lancet*. 2020 Mar 28;395(10229):1054–1062. doi: [https://doi.org/10.1016/S0140-](https://doi.org/10.1016/S0140-6736(20)30566-3)
342 6736(20)30566-3. Epub 2020 Mar 11.

23. 343 24. Uyeki T. Oseltamivir Treatment of Influenza in Children. *Clin Infect*
344 *Dis*. 2018;66(10):1501–1503.

345 25. Boriskin YS, Leneva IA, Pecheur EI, Polyak SJ. Arbidol: a broad- spectrum antiviral
346 compound that blocks viral fusion. *Curr Med Chem* 2008;15(10):997–1005.

347 26. Who. WHO Guidelines for Pharmacological Management of Pandemic Influenza
348 A(H1N1) 2009 and other Influenza Viruses. WHO Guidel. *Pharmacol. Manag. Pandemic*
349 *Influ. A(H1N1) 2009 other Infl. Viruses* 1–32 (2010)

350

351

353

354

355

Table 1. Administered treatments for patients in three hospitals

| | WPH n=373 | Tongji n=100 | Union n=31 | Total n=504 |
|---------------------|----------------------|-------------------------|-----------------------|------------------------|
| Arbidol | 141 (37.8%) | 94 (94.0%) | 22 (71.0%) | 257 (51.0%) |
| Oseltamivir | 46 (12.3%) | 19 (19.0%) | 1 (3.2%) | 66 (13.1%) |
| Lopinavir/Ritonavir | 245 (65.7%) | 4 (4.0%) | 10 (32.3%) | 259 (51.4%) |
| Chloroquine | 4 (1.1%) | 0 (0.0%) | 0 (0.0%) | 4 (0.8%) |
| Hydroxychloroquine | 3 (0.8%) | 0 (0.0%) | 0 (0.0%) | 3 (0.6%) |
| Favipiravir | 4 (1.1%) | 0 (0.0%) | 0 (0.0%) | 4 (0.8%) |
| Ganciclovir | 28 (7.5%) | 0 (0.0%) | 2 (6.5%) | 30 (6.0%) |
| Glucocorticoid | 151 (40.5%) | 73 (73.0%) | 6 (19.4%) | 230 (45.6%) |
| Immunoglobulin | 117 (31.4%) | 25 (25.0%) | 10 (32.3%) | 152 (30.2%) |
| Albumin | 71 (19.0%) | 15 (15.0%) | 2 (6.5%) | 88 (17.5%) |
| Oxygen | 318 (85.3%) | 86 (86.0%) | 23 (74.2%) | 427 (84.7%) |
| Ventilation | 43 (11.5%) | 12 (12.0%) | 0 (0%) | 55 (10.9%) |

356

357

358

Table 2. Distributions of Baseline Characteristics by Medication and Hospital

359

| | WPH | | Tongji | | Union | | Total | |
|-------------------------------------|-------------------------------|----------------|----------------|----------------|----------------|----------------|----------------|----------------|
| | Arbidol | | | | | | | |
| | Yes n=141 | No n=232 | Yes n=94 | No n=6 | Yes n=22 | No n=9 | Yes n=257 | No n=247 |
| Age (year) | 61.3 (14.2) ⁽¹⁾ | 60.3 (15.0) | 55.8 (14.6) | 68.5 (9.6) | 58.2 (17.3) | 46.4 (15.3) | 59.1 (14.8) | 60.0 (15.1) |
| Female | 72 (51.1%) | 112 (48.3%) | 41 (43.6%) | 3 (50.0%) | 12 (54.5%) | 5 (55.6%) | 125 (48.6%) | 120 (48.6%) |
| Pre-existing conditions | 90 (63.8%) | 119 (51.3%) | 33 (35.1%) | 5 (83.3%) | 11 (50.0%) | 4 (44.4%) | 134 (52.1%) | 128 (51.8%) |
| SpO2 level (%) | 93.6 (4.3) | 91.7 (12.2) | 93.9 (6.4) | 81.3 (14.9) | 95.8 (1.4) | 96.8 (1.1) | 93.9 (5.0) | 91.6 (12.1) |
| Lesion Size (cm ²) | 56.1 (43.4) | 65.5 (48.4) | 46.8 (31.2) | 44.6 (19.7) | 55.4 (38.9) | 50.8 (42.6) | 52.7 (39.1) | 64.6 (47.9) |
| Admission Date ⁽²⁾ (day) | 65.0 (13.4) | 61.2 (22.0) | 52.8 (1.4) | 52.5 (1.4) | 55.5 (7.3) | 55.4 (5.5) | 59.7 (11.7) | 60.8 (21.4) |
| | Oseltamivir | | | | | | | |
| | Yes n=46 | No n=327 | Yes n=19 | No n=81 | Yes n=1 | No n=30 | Yes n=66 | No n=438 |
| Age (year) | 59.1 (13.5) | 60.9 (14.8) | 52.1 (12.8) | 57.7 (14.9) | 66.0 | 54.4 (17.5) | 57.2 (13.6) | 59.9 (15.1) |
| Female | 24 (52.2%) | 160 (48.9%) | 9 (47.4%) | 35 (43.2%) | 1 (100%) | 16 (53.3%) | 34 (51.5%) | 211 (48.2%) |
| Pre-existing Conditions | 27 (58.7%) | 182 (55.7%) | 4 (21.1%) | 34 (42.0%) | 1 (100%) | 14 (46.7%) | 32 (48.5%) | 230 (52.5%) |
| SpO2 level (%) | 92.8 (6.4) | 92.4 (10.4) | 92.6 (7.7) | 93.3 (7.7) | 94.0 | 96.2 (1.3) | 92.8 (6.7) | 92.8 (9.6) |
| Lesion Size (cm ²) | 67.8 (46.1) | 60.3 (46.5) | 47.1 (39.5) | 46.7 (28.5) | 43.0 | 54.5 (39.8) | 61.5 (44.6) | 57.2 (43.4) |
| Admission Date (day) | 42.2 (10.1) | 65.5 (18.5) | 53.2 (1.2) | 52.6 (1.4) | 63.0 | 55.2 (6.7) | 45.7 (10.0) | 62.4 (16.9) |
| | Lopinavir/Ritonavir | | | | | | | |
| | Yes n=245 | No n=128 | Yes n=4 | No n=96 | Yes n=10 | No n=21 | Yes n=259 | No N=245 |
| Age (year) | 60.3 (13.4) | 61.4 (16.9) | 39.2 (16.3) | 57.3 (14.2) | 53.5 (12.4) | 55.4 (19.5) | 59.7 (13.6) | 59.3 (16.2) |
| Female | 122 (49.8%) | 62 (48.4%) | 2 (50.0%) | 42 (43.8%) | 6 (60.0%) | 11 (52.4%) | 130 (50.2%) | 115 (46.9%) |
| Pre-existing Conditions | 145 (59.2%) | 64 (50.0%) | 1 (25.0%) | 37 (38.5%) | 5 (50.0%) | 10 (47.6%) | 151 (58.3%) | 111 (45.3%) |
| SpO2 level (%) | 92.5 (8.5) | 92.2 (12.4) | 95.0 (4.1) | 93.1 (7.8) | 96.9 (0.9) | 95.7 (1.4) | 92.7 (8.3) | 92.9 (10.2) |
| Lesion Size (cm ²) | 61.6 (47.2) | 61.0 (44.9) | 22.6 (17.3) | 48.0 (31.0) | 44.4 (30.8) | 59.0 (42.6) | 60.2 (46.6) | 55.1 (39.5) |
| Admission Date (day) | 58.1 (15.4) | 71.4 (22.7) | 53.0 (1.6) | 52.7 (1.4) | 52.8 (5.0) | 56.7 (7.2) | 57.8 (15.0) | 62.8 (18.8) |

360

361

Figure 1 Diagram

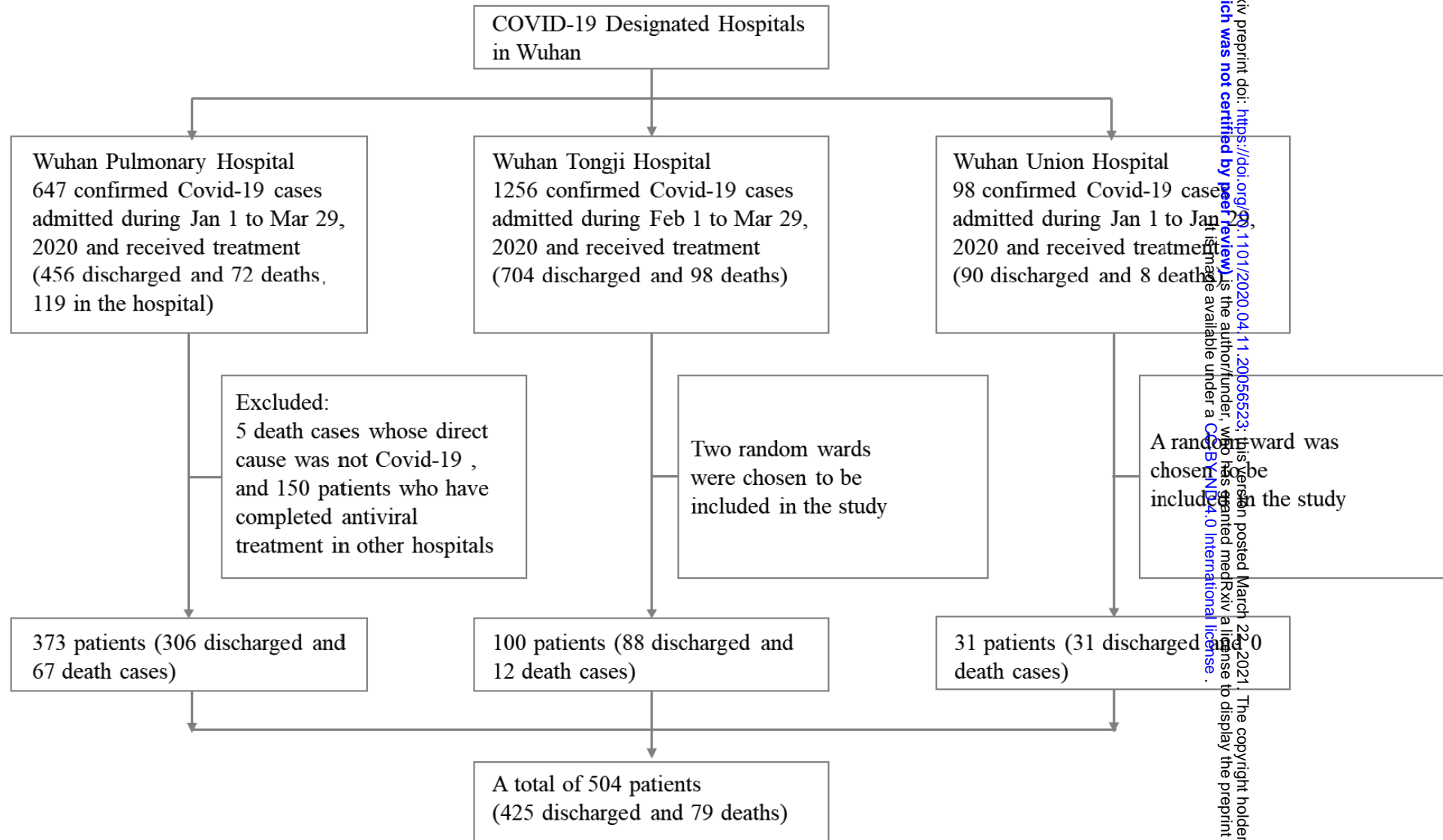


Figure 1: Diagram of cohort design and patient selection

medRxiv preprint doi: <https://doi.org/10.1101/2020.04.11.20056623>; this version posted March 22, 2021. The copyright holder for this preprint (which was not certified by peer review) is the author/funder, who has granted medRxiv a license to display the preprint in perpetuity. It is made available under a CC-BY-ND 4.0 International license.

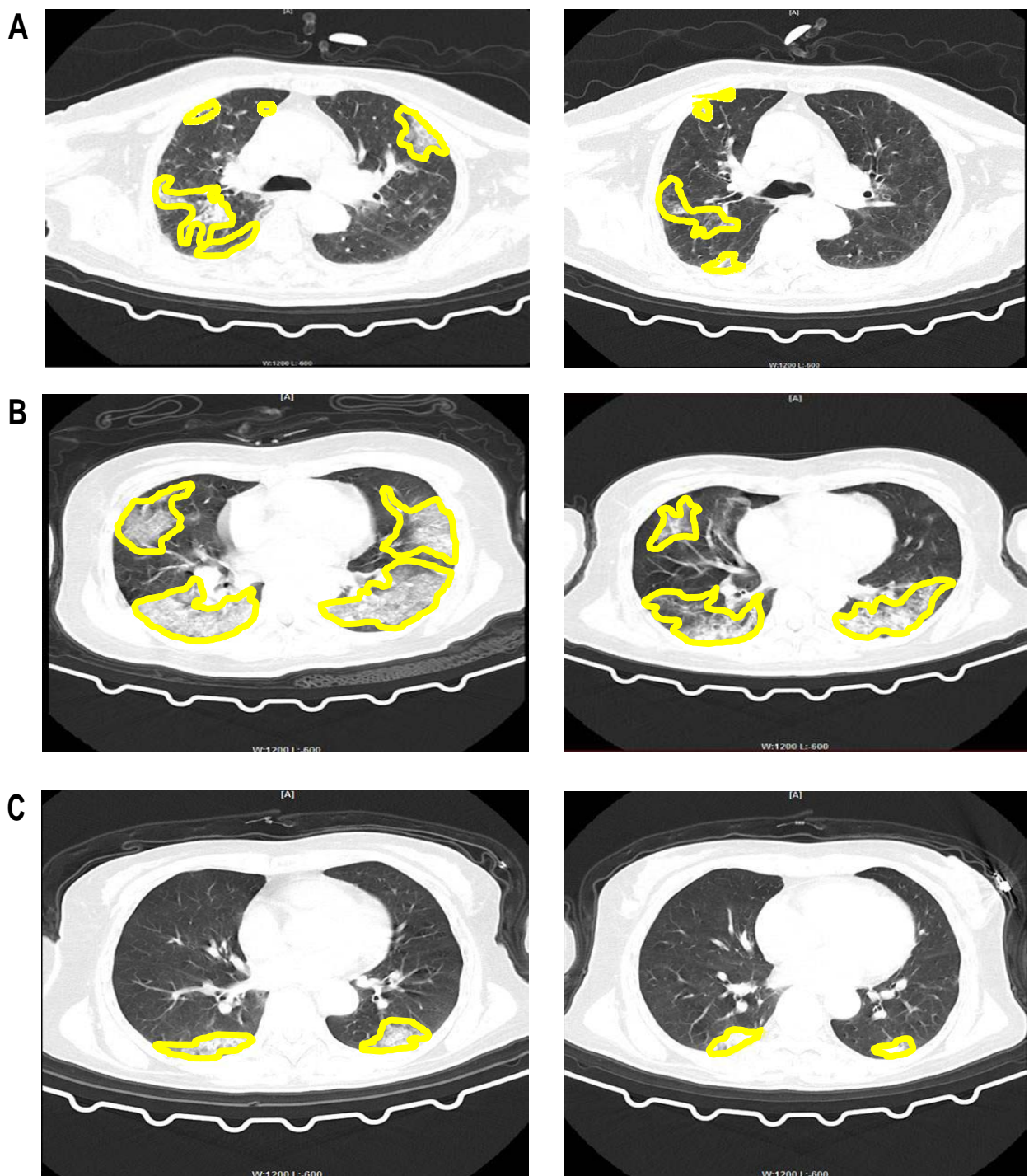


Figure 2: Chest CT scan images before and after the antiviral treatment. The shaded areas circled by the yellow line were the lesion areas. Using ImageJ, we were able to quantify the sizes of the lesions in terms of squared centimeters. (A) A male patient in his 50s with no underlying diseases who have received Arbidol alone. (B) A male patient in his 50s with no underlying diseases who have received Oseltamivir + Lopinavir/Ritonavir, since no patient has received Oseltamivir alone. (C) A male patient in his 50s with no underlying diseases who have received Lopinavir/Ritonavir alone.

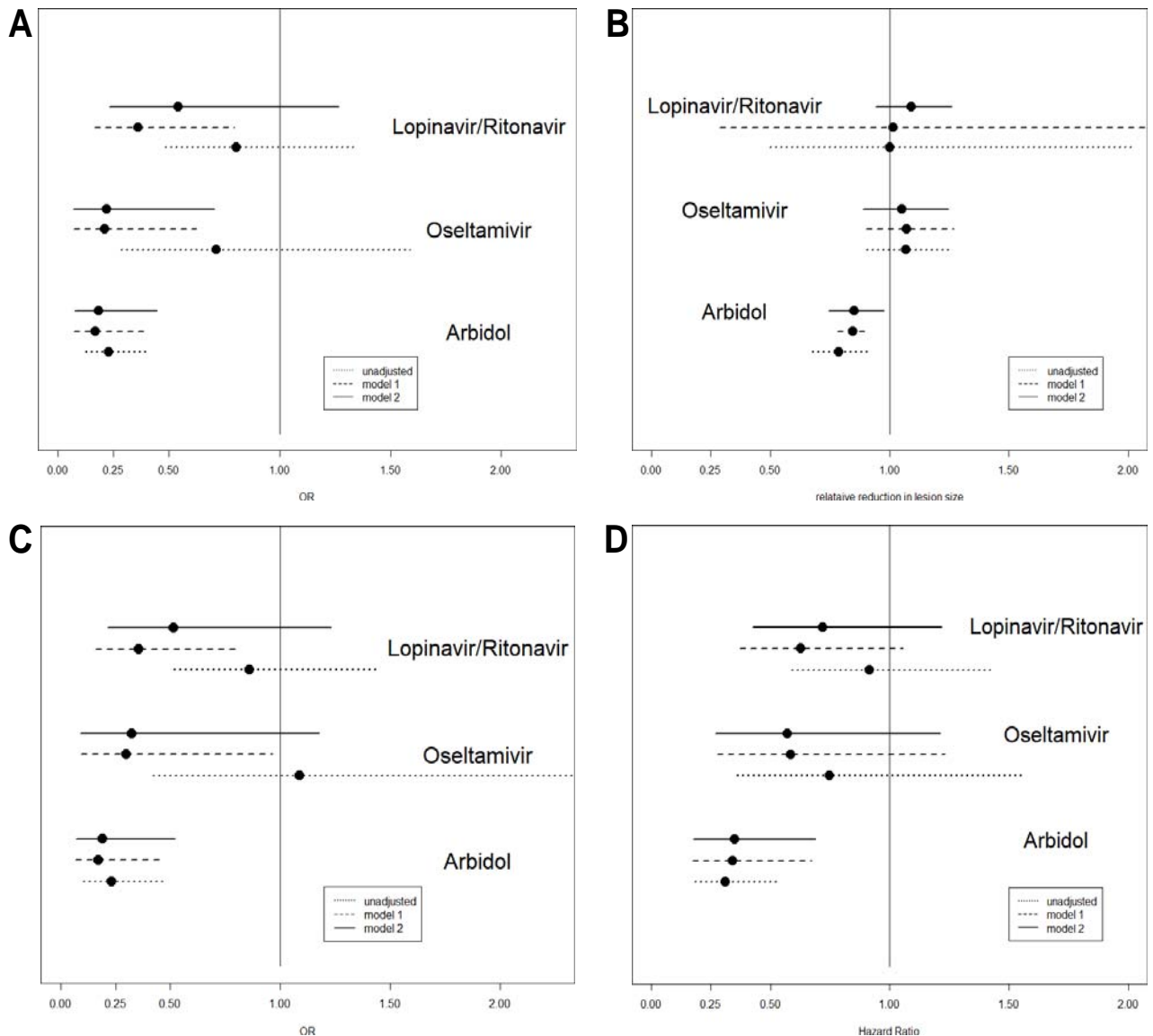


Figure 3: (A) The estimated OR and associated 95% CI for Arbidol, Oseltamivir and Lopinavir/Ritonavir. (B) The estimated effect on relative change in lesion size and associated 95% CI for Arbidol, Oseltamivir and Lopinavir/Ritonavir. An effect less than 1 suggests that more relative reduction in lesion size is associated with the medicine of interest. (C) The estimated OR and associated 95% CI for Arbidol, Oseltamivir and Lopinavir/Ritonavir among 373 patients from WPH. (D) The estimated hazard ratio and associated 95% CI for Arbidol, Oseltamivir and Lopinavir/Ritonavir based on the Cox regression analyses with time dependent covariates accounting for timings of medication use. Model 1: adjusting for sex, pre-existing condition, log(age), log(SpO2), hospital, log(lesion size) and log(admission date); Model 2: adjusting for confounders in Model 1 and medication use (Arbidol, Oseltamivir, and Lopinavir/Ritonavir).

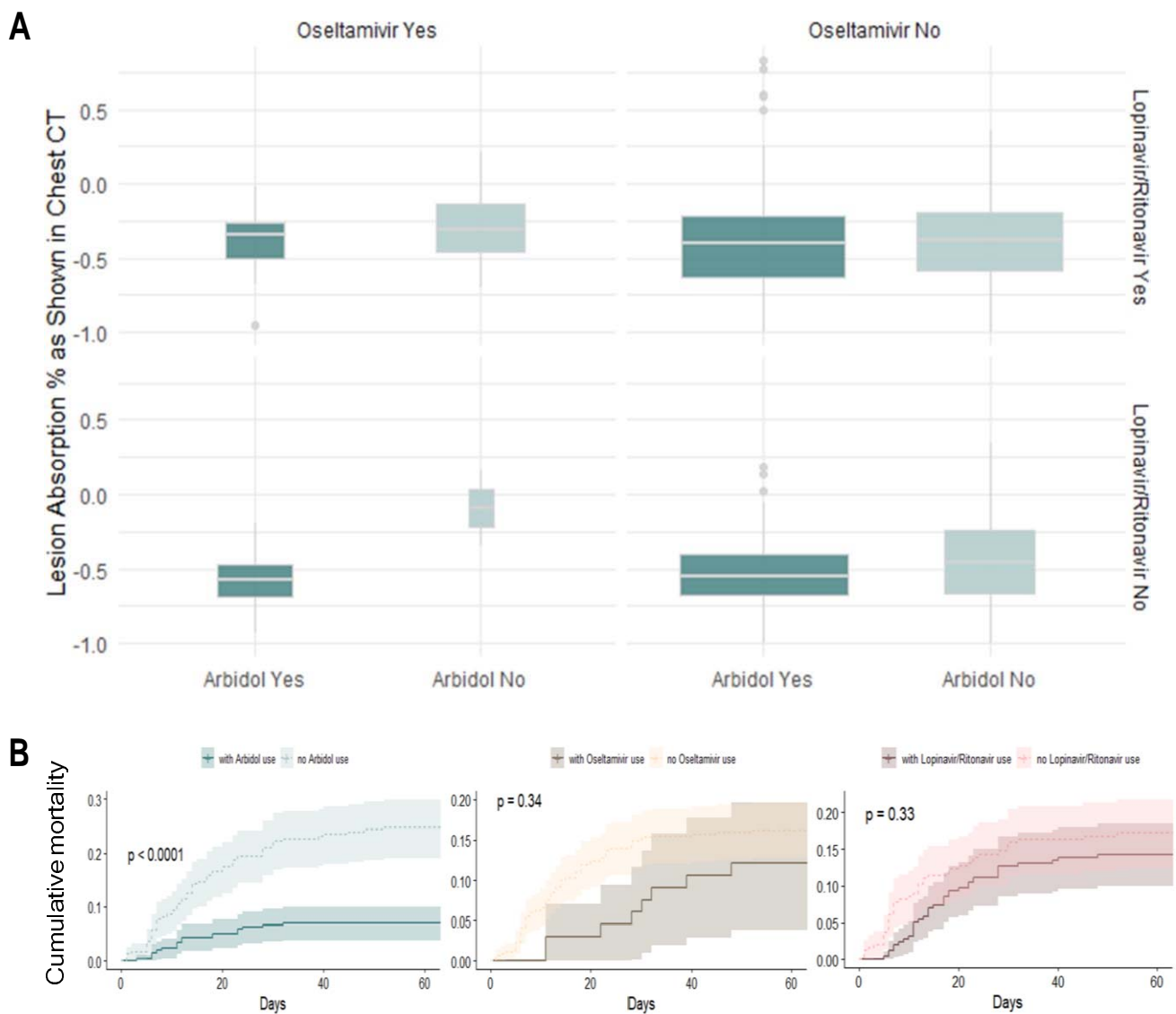


Figure 4: (A) Boxplot of the lesion absorption rate before and after the antiviral treatment, as shown in chest CT scan, compared among Arbidol, Oseltamivir, and Lopinavir/Ritonavir groups. In these boxplots we included CT lesion measures from all patients (deceased and discharged). (B) Cumulative mortality rate curves by medication use (Arbidol, Oseltamivir, and Lopinavir/Ritonavir). P-value of the log-rank tests are displayed and the shaded area shows the 95% confidence intervals

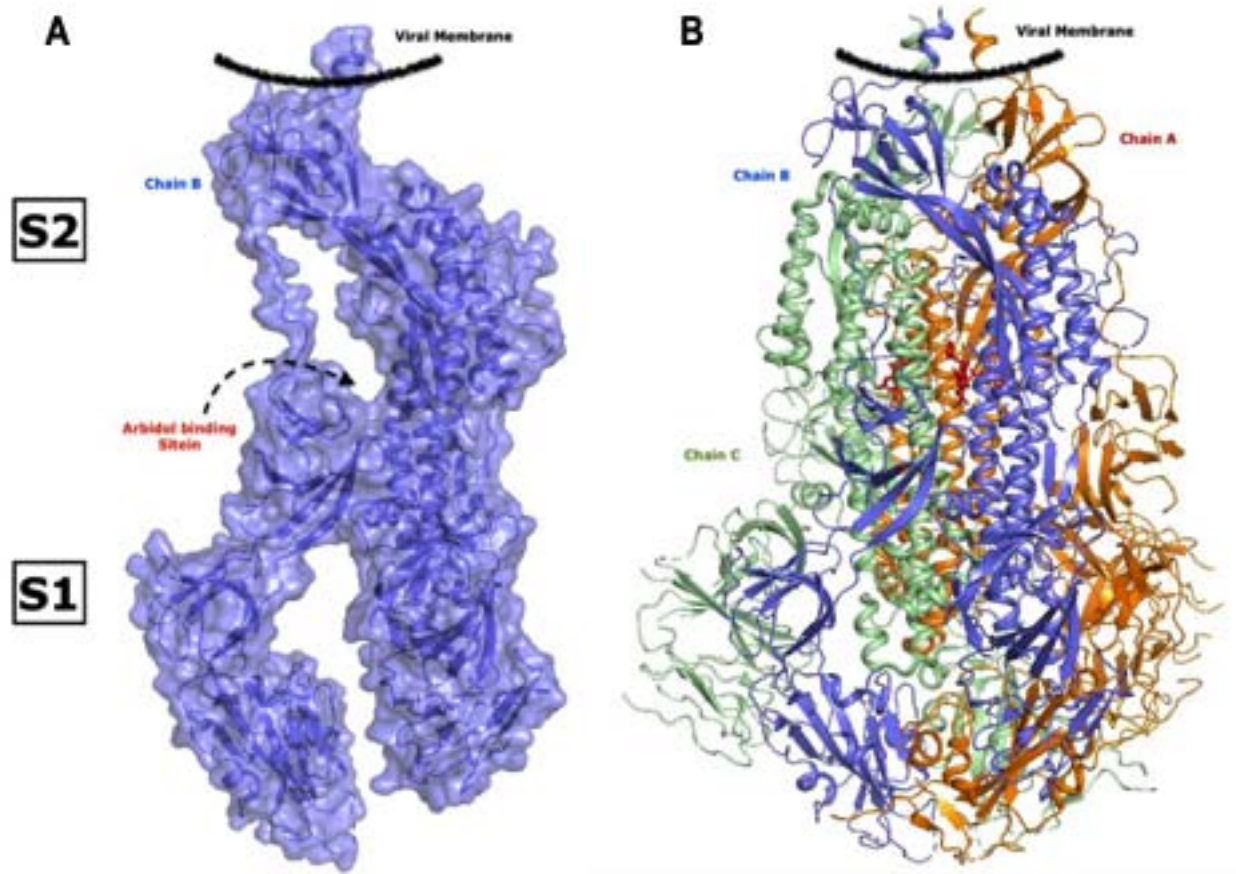


Figure 5: Surface and ribbon model showing the full length monomer (A) and homo-trimer (B) structure of SARS-CoV-2 spike glycoprotein. Position of S1 and S2 domains are labelled and bound Arbidol with high affinity at the center is shown in sticks. Each monomer of homo-trimer is shown in different colour.

medRxiv preprint doi: <https://doi.org/10.1101/2020.04.11.20056523>; this version posted March 22, 2021. The copyright holder for this preprint
(which was not certified by peer review) is the author/funder, who has granted medRxiv a license to display the preprint in perpetuity.
It is made available under a [CC-BY-ND 4.0 International license](#) .

Table 1. Administered treatments for patients in three hospitals

| | WPH n=373 | Tongji n=100 | Union n=31 | Total n=504 |
|---------------------|----------------------|-------------------------|-----------------------|------------------------|
| Arbidol | 141 (37.8%) | 94 (94.0%) | 22 (71.0%) | 257 (51.0%) |
| Oseltamivir | 46 (12.3%) | 19 (19.0%) | 1 (3.2%) | 66 (13.1%) |
| Lopinavir/Ritonavir | 245 (65.7%) | 4 (4.0%) | 10 (32.3%) | 259 (51.4%) |
| Chloroquine | 4 (1.1%) | 0 (0.0%) | 0 (0.0%) | 4 (0.8%) |
| Hydroxychloroquine | 3 (0.8%) | 0 (0.0%) | 0 (0.0%) | 3 (0.6%) |
| Favipiravir | 4 (1.1%) | 0 (0.0%) | 0 (0.0%) | 4 (0.8%) |
| Ganciclovir | 28 (7.5%) | 0 (0.0%) | 2 (6.5%) | 30 (6.0%) |
| Glucocorticoid | 151 (40.5%) | 73 (73.0%) | 6 (19.4%) | 230 (45.6%) |
| Immunoglobulin | 117 (31.4%) | 25 (25.0%) | 10 (32.3%) | 152 (30.2%) |
| Albumin | 71 (19.0%) | 15 (15.0%) | 2 (6.5%) | 88 (17.5%) |
| Oxygen | 318 (85.3%) | 86 (86.0%) | 23 (74.2%) | 427 (84.7%) |
| Ventilation | 43 (11.5%) | 12 (12.0%) | 0 (0%) | 55 (10.9%) |

Table 2. Distributions of Baseline Characteristics by Medication and Hospital

| | WPH | | Tongji | | Union | | Total | |
|-------------------------------------|-------------------------------|----------------|----------------|----------------|----------------|----------------|----------------|----------------|
| | Arbidol | | | | | | | |
| | Yes n=141 | No n=232 | Yes n=94 | No n=6 | Yes n=22 | No n=9 | Yes n=257 | No n=247 |
| Age (year) | 61.3 (14.2) ⁽¹⁾ | 60.3 (15.0) | 55.8 (14.6) | 68.5 (9.6) | 58.2 (17.3) | 46.4 (15.3) | 59.1 (14.8) | 60.0 (15.1) |
| Female | 72 (51.1%) | 112 (48.3%) | 41 (43.6%) | 3 (50.0%) | 12 (54.5%) | 5 (55.6%) | 125 (48.6%) | 120 (48.6%) |
| Pre-existing conditions | 90 (63.8%) | 119 (51.3%) | 33 (35.1%) | 5 (83.3%) | 11 (50.0%) | 4 (44.4%) | 134 (52.1%) | 128 (51.8%) |
| SpO2 level (%) | 93.6 (4.3) | 91.7 (12.2) | 93.9 (6.4) | 81.3 (14.9) | 95.8 (1.4) | 96.8 (1.1) | 93.9 (5.0) | 91.6 (12.1) |
| Lesion Size (cm ²) | 56.1 (43.4) | 65.5 (48.4) | 46.8 (31.2) | 44.6 (19.7) | 55.4 (38.9) | 50.8 (42.6) | 52.7 (39.1) | 64.6 (47.9) |
| Admission Date ⁽²⁾ (day) | 65.0 (13.4) | 61.2 (22.0) | 52.8 (1.4) | 52.5 (1.4) | 55.5 (7.3) | 55.4 (5.5) | 59.7 (11.7) | 60.8 (21.4) |
| | Oseltamivir | | | | | | | |
| | Yes n=46 | No n=327 | Yes n=19 | No n=81 | Yes n=1 | No n=30 | Yes n=66 | No n=438 |
| Age (year) | 59.1 (13.5) | 60.9 (14.8) | 52.1 (12.8) | 57.7 (14.9) | 66.0 | 54.4 (17.5) | 57.2 (13.6) | 59.9 (15.1) |
| Female | 24 (52.2%) | 160 (48.9%) | 9 (47.4%) | 35 (43.2%) | 1 (100%) | 16 (53.3%) | 34 (51.5%) | 211 (48.2%) |
| Pre-existing Conditions | 27 (58.7%) | 182 (55.7%) | 4 (21.1%) | 34 (42.0%) | 1 (100%) | 14 (46.7%) | 32 (48.5%) | 230 (52.5%) |
| SpO2 level (%) | 92.8 (6.4) | 92.4 (10.4) | 92.6 (7.7) | 93.3 (7.7) | 94.0 | 96.2 (1.3) | 92.8 (6.7) | 92.8 (9.6) |
| Lesion Size (cm ²) | 67.8 (46.1) | 60.3 (46.5) | 47.1 (39.5) | 46.7 (28.5) | 43.0 | 54.5 (39.8) | 61.5 (44.6) | 57.2 (43.4) |
| Admission Date (day) | 42.2 (10.1) | 65.5 (18.5) | 53.2 (1.2) | 52.6 (1.4) | 63.0 | 55.2 (6.7) | 45.7 (10.0) | 62.4 (16.9) |
| | Lopinavir/Ritonavir | | | | | | | |
| | Yes n=245 | No n=128 | Yes n=4 | No n=96 | Yes n=10 | No n=21 | Yes n=259 | No N=245 |
| Age (year) | 60.3 (13.4) | 61.4 (16.9) | 39.2 (16.3) | 57.3 (14.2) | 53.5 (12.4) | 55.4 (19.5) | 59.7 (13.6) | 59.3 (16.2) |
| Female | 122 (49.8%) | 62 (48.4%) | 2 (50.0%) | 42 (43.8%) | 6 (60.0%) | 11 (52.4%) | 130 (50.2%) | 115 (46.9%) |
| Pre-existing Conditions | 145 (59.2%) | 64 (50.0%) | 1 (25.0%) | 37 (38.5%) | 5 (50.0%) | 10 (47.6%) | 151 (58.3%) | 111 (45.3%) |
| SpO2 level (%) | 92.5 (8.5) | 92.2 (12.4) | 95.0 (4.1) | 93.1 (7.8) | 96.9 (0.9) | 95.7 (1.4) | 92.7 (8.3) | 92.9 (10.2) |
| Lesion Size (cm ²) | 61.6 (47.2) | 61.0 (44.9) | 22.6 (17.3) | 48.0 (31.0) | 44.4 (30.8) | 59.0 (42.6) | 60.2 (46.6) | 55.1 (39.5) |
| Admission Date (day) | 58.1 (15.4) | 71.4 (22.7) | 53.0 (1.6) | 52.7 (1.4) | 52.8 (5.0) | 56.7 (7.2) | 57.8 (15.0) | 62.8 (18.8) |

Figure 1 Diagram

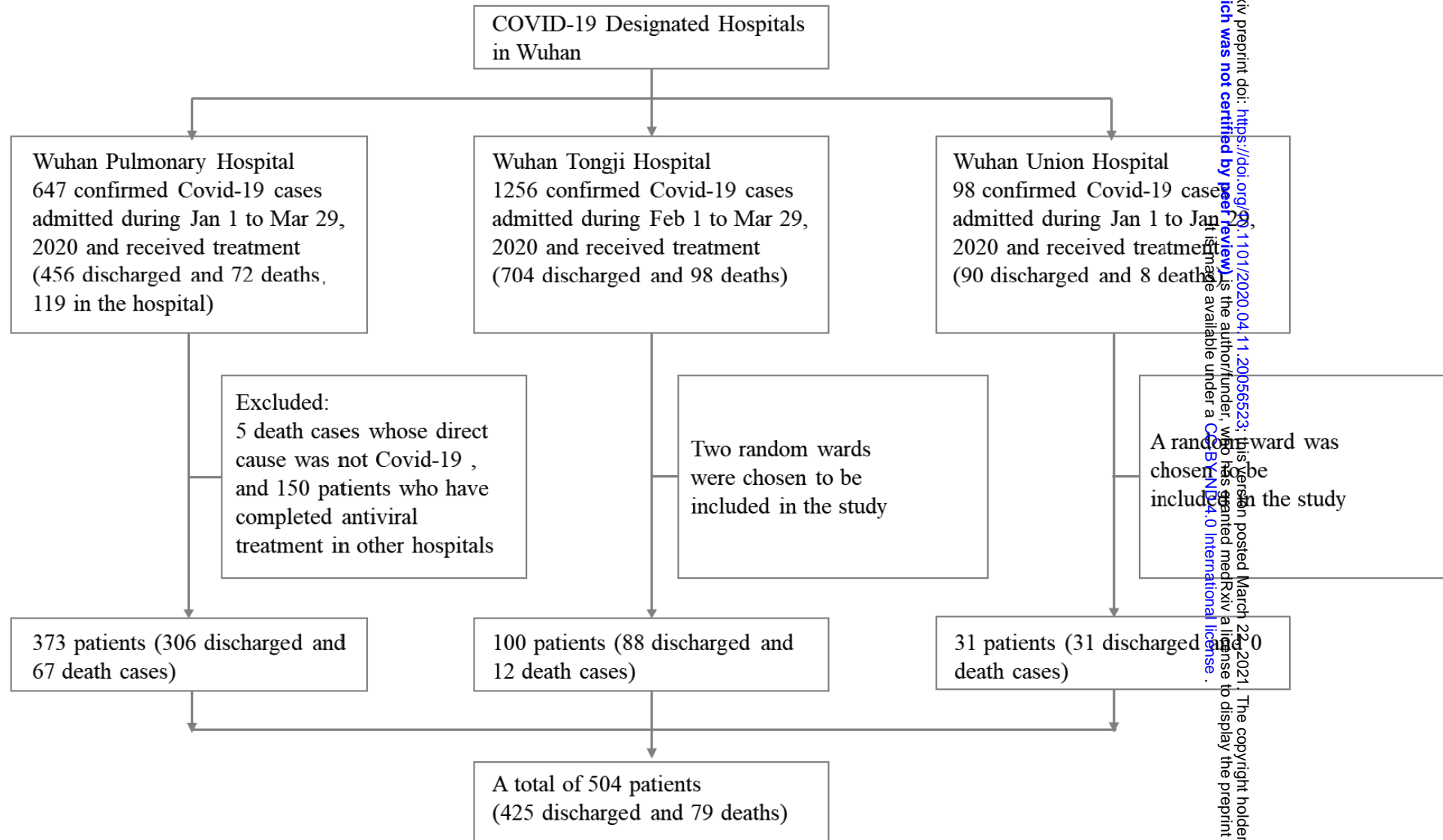


Figure 1: Diagram of cohort design and patient selection

medRxiv preprint doi: <https://doi.org/10.1101/2020.04.11.20056623>; this version posted March 22, 2021. The copyright holder for this preprint (which was not certified by peer review) is the author/funder, who has granted medRxiv a license to display the preprint in perpetuity. It is made available under a CC-BY-ND 4.0 International license.

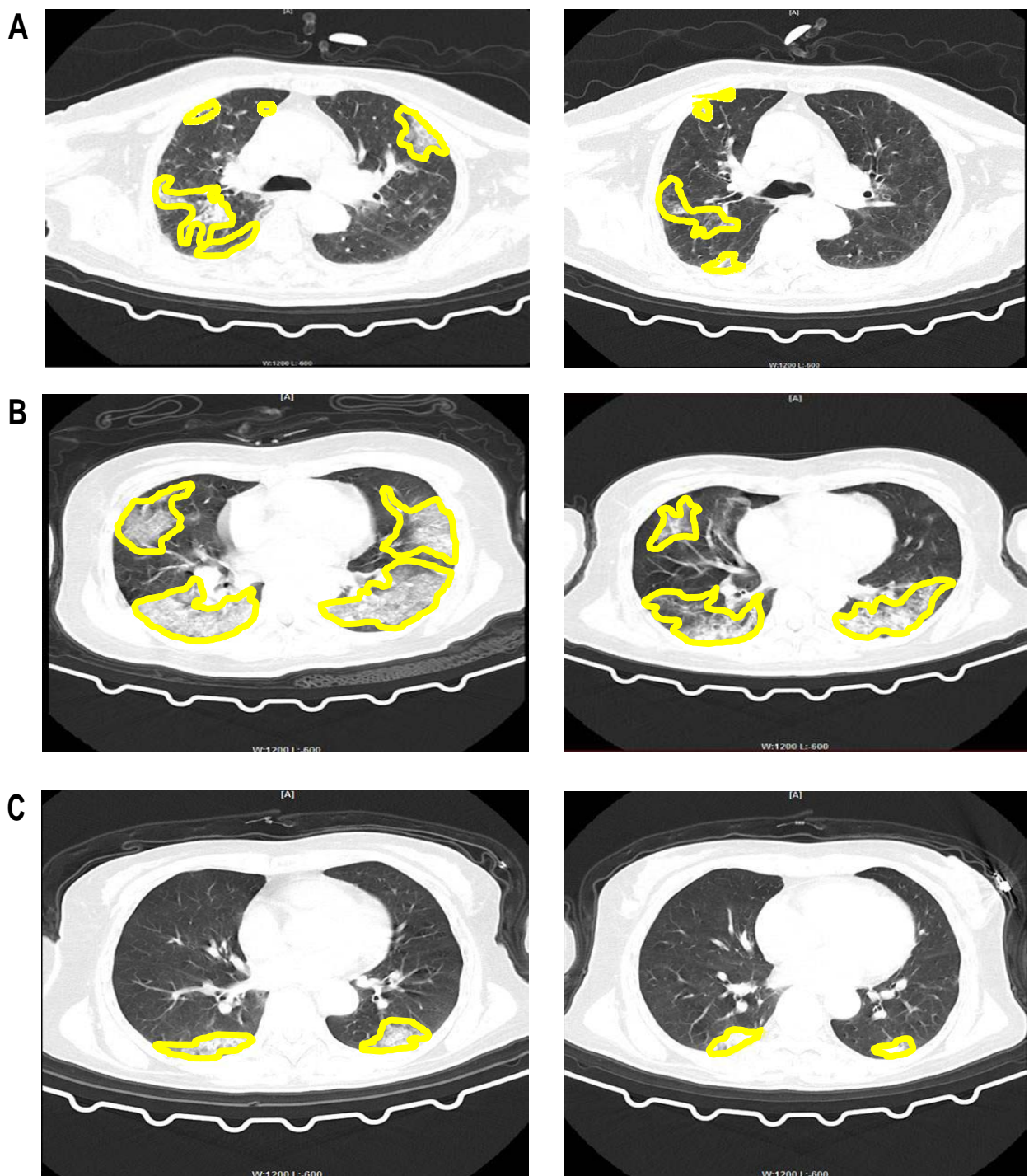


Figure 2: Chest CT scan images before and after the antiviral treatment. The shaded areas circled by the yellow line were the lesion areas. Using ImageJ, we were able to quantify the sizes of the lesions in terms of squared centimeters. (A) A male patient in his 50s with no underlying diseases who have received Arbidol alone. (B) A male patient in his 50s with no underlying diseases who have received Oseltamivir + Lopinavir/Ritonavir, since no patient has received Oseltamivir alone. (C) A male patient in his 50s with no underlying diseases who have received Lopinavir/Ritonavir alone.

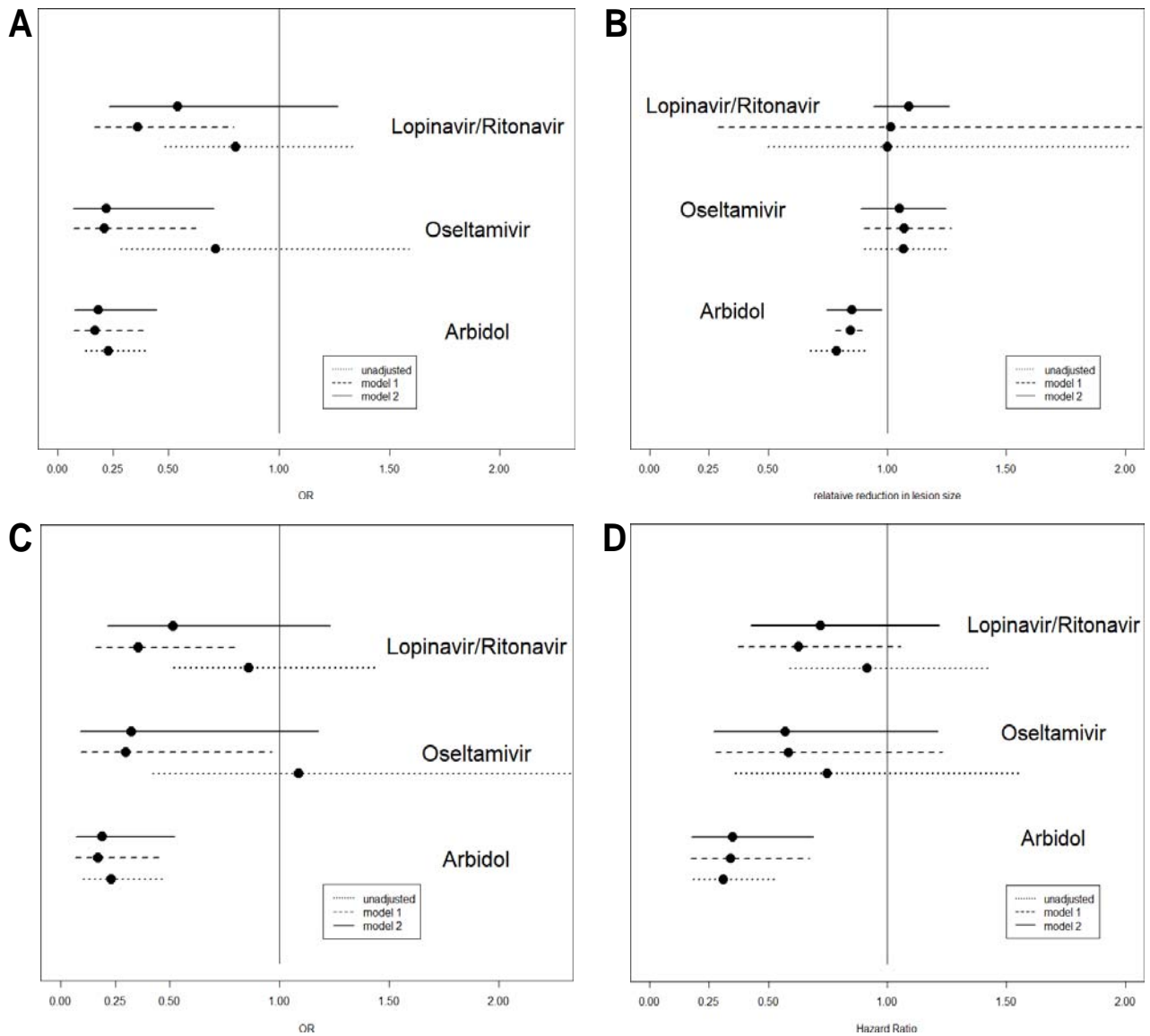


Figure 3: (A) The estimated OR and associated 95% CI for Arbidol, Oseltamivir and Lopinavir/Ritonavir. (B) The estimated effect on relative change in lesion size and associated 95% CI for Arbidol, Oseltamivir and Lopinavir/Ritonavir. An effect less than 1 suggests that more relative reduction in lesion size is associated with the medicine of interest. (C) The estimated OR and associated 95% CI for Arbidol, Oseltamivir and Lopinavir/Ritonavir among 373 patients from WPH. (D) The estimated hazard ratio and associated 95% CI for Arbidol, Oseltamivir and Lopinavir/Ritonavir based on the Cox regression analyses with time dependent covariates accounting for timings of medication use.

Model 1: adjusting for sex, pre-existing condition, log(age), log(SpO₂), hospital, log(lesion size) and log(admission date); Model 2: adjusting for confounders in Model 1 and medication use (Arbidol, Oseltamivir, and Lopinavir/Ritonavir).

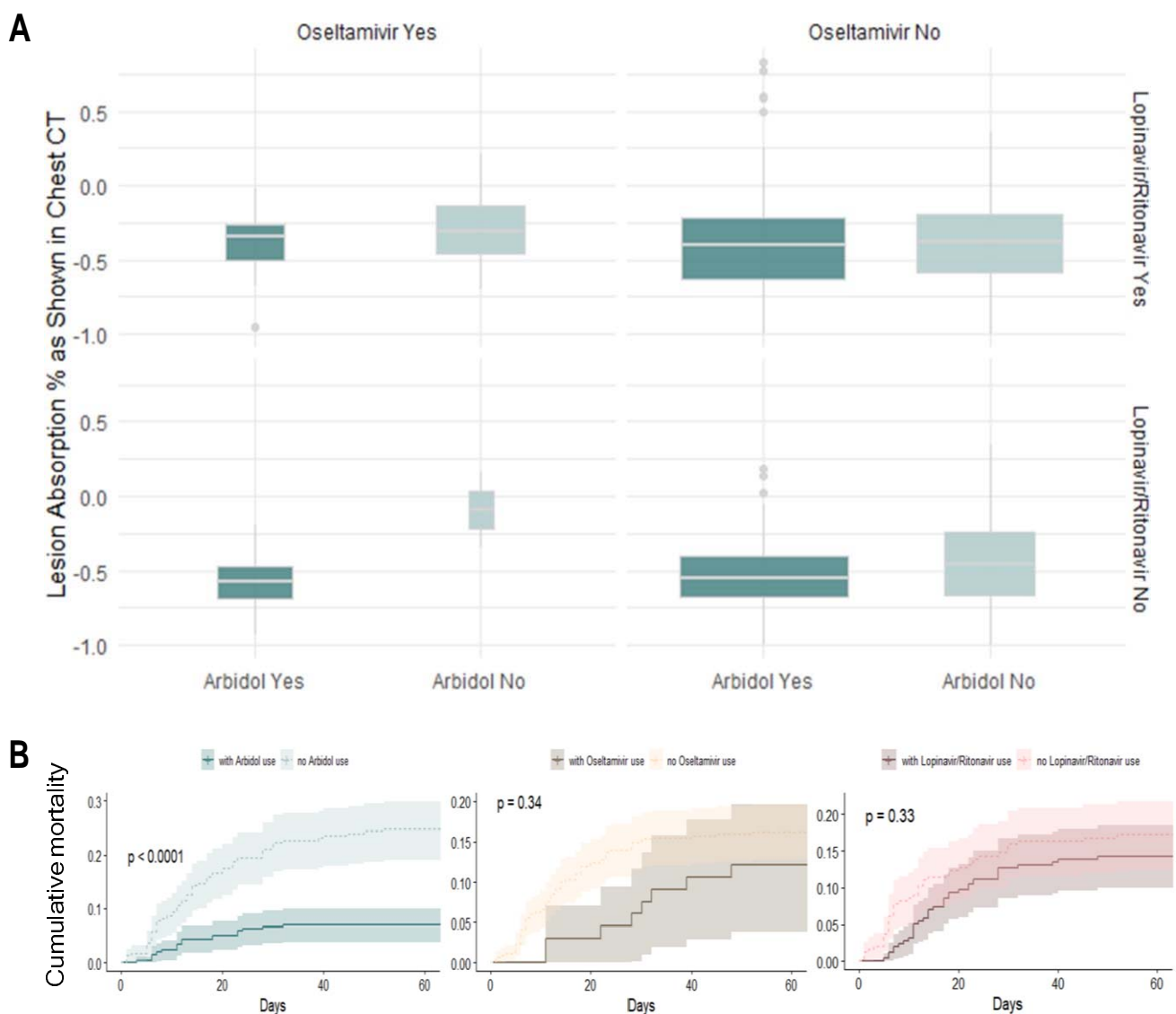


Figure 4: (A) Boxplot of the lesion absorption rate before and after the antiviral treatment, as shown in chest CT scan, compared among Arbidol, Oseltamivir, and Lopinavir/Ritonavir groups. In these boxplots we included CT lesion measures from all patients (deceased and discharged). (B) Cumulative mortality rate curves by medication use (Arbidol, Oseltamivir, and Lopinavir/Ritonavir). P-value of the log-rank tests are displayed and the shaded area shows the 95% confidence intervals

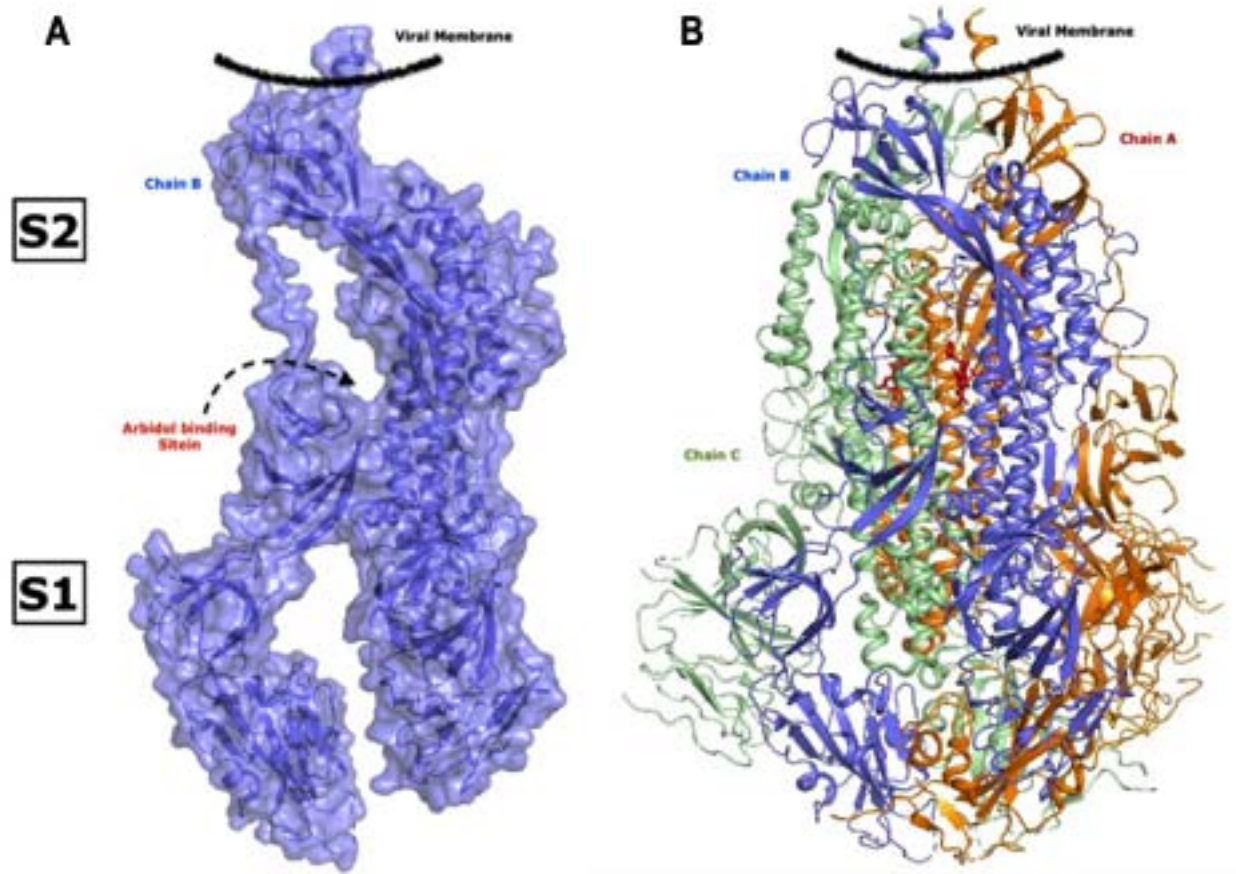


Figure 5: Surface and ribbon model showing the full length monomer (A) and homo-trimer (B) structure of SARS-CoV-2 spike glycoprotein. Position of S1 and S2 domains are labelled and bound Arbidol with high affinity at the center is shown in sticks. Each monomer of homo-trimer is shown in different colour

medRxiv preprint doi: <https://doi.org/10.1101/2020.04.11.20056523>; this version posted March 22, 2021. The copyright holder for this preprint (which was not certified by peer review) is the author/funder, who has granted medRxiv a license to display the preprint in perpetuity. It is made available under a [CC-BY-ND 4.0 International license](#) .