

Supplementary material to accompany: The burden of nosocomial covid-19: results from the Wales multi-centre retrospective observational study of 2518 hospitalised adults.

Supplementary Table 1: List of participating centres	2
Supplementary Table 2: Commonly used case definitions for probable covid-19 origin	3
Supplementary Figure 1: Study flowchart	4
Supplementary Table 3: Admission characteristics stratified by age and sex	5
Supplementary Table 4: Effect of varying diagnostic cut-off on burden of nosocomial infection	6
Supplementary Figure 2: Kaplan Meier survival plot of nosocomial versus community infection of covid-19 patients.....	7
Supplementary Table 5: Comparison of community-acquired and nosocomial-acquired covid-19 patient characteristics, based on a diagnostic case testing threshold of 48 hours after admission	8
Supplementary Table 6: Monthly prevalence of nosocomial infection diagnosis	9

Supplementary Table 1: List of participating centres

Aneurin Bevan Health Board	Nevill Hall Hospital, Royal Gwent Hospital and Ysbyty Ystrad Fawr.
Betsi Cadwalladr Health Board	Glan Clwyd Hospital, Wrexham Maelor Hospital and Ysbyty Gwynedd (Bangor).
Cardiff and Vale Health Board	University Hospital Llandough and University Hospital of Wales.
Cwm Taf Health Board	Prince Charles Hospital, Princess of Wales Hospital and Royal Glamorgan Hospital.
Hywel Dda Health Board	Bronglais Hospital, Glangwili General Hospital, Prince Phillip Hospital and Withybush General Hospital.
Swansea Bay Health Board	Morrison Hospital, Singleton Hospital and Neath Port Talbot Hospital.

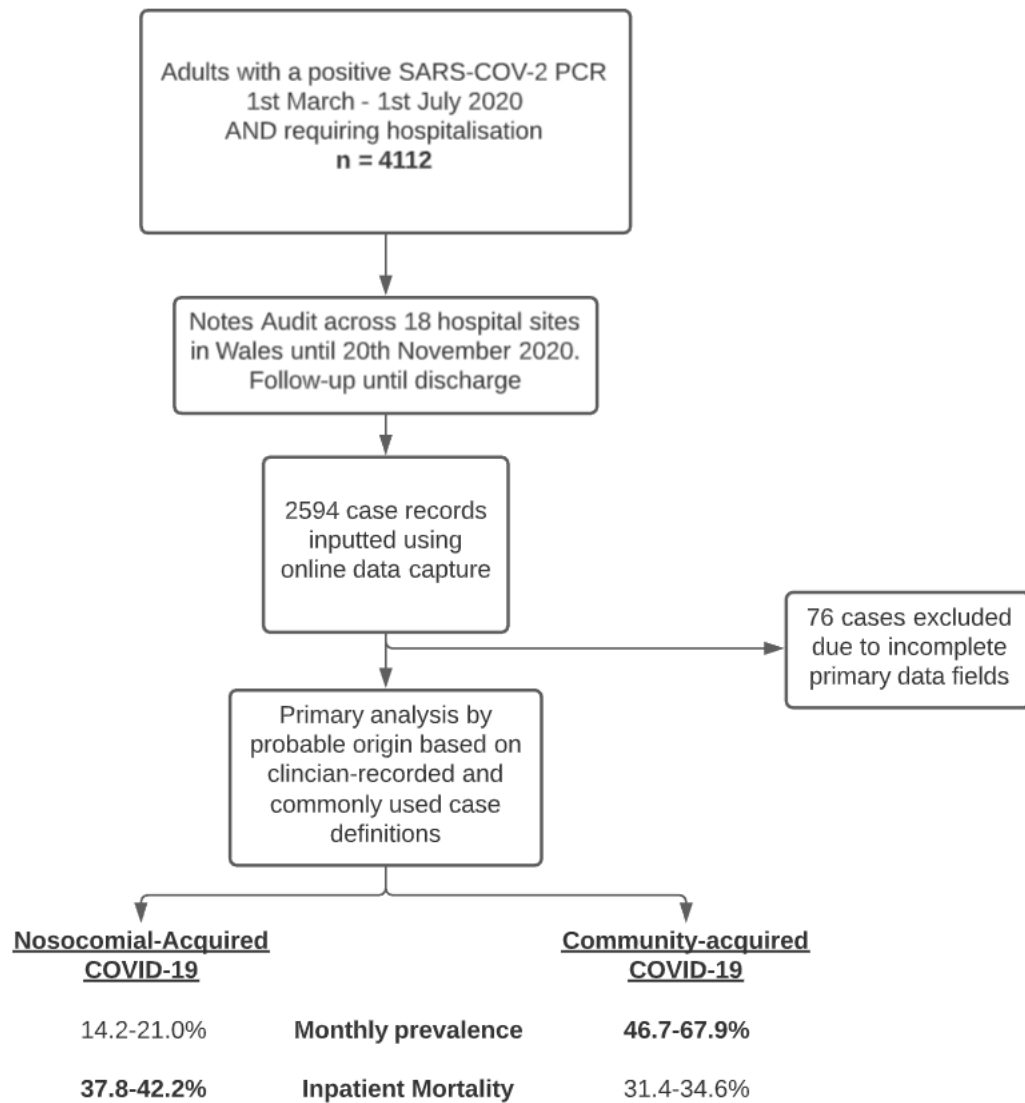
All hospitals delivered urgent and emergency care to patients diagnosed with covid-19.

Supplementary Table 2: Commonly used case definitions for probable covid-19 origin

	Case definition	Probable covid-19 origin
COPE study investigators ¹	Positive SARS-CoV-2 test taken prior to or within first 5 days of admission	Community-acquired covid-19 (“CAC”)
	Positive SARS-CoV-2 test taken between 5-14 days after admission	Probable Community-acquired
	Positive SARS-CoV-2 test taken more than 14 days after hospital admission <i>(patient required to remain an inpatient on date of swab sampling)</i>	Hospital-acquired (Nosocomial-“NC”)
Public Health England	Positive SARS-CoV-2 test taken after 7 days of hospital admission	Probable Nosocomial covid-19
Public Health Wales	Positive SARS-CoV-2 test taken an no hospital admission within 28 days or within 2 days of hospital admission	Community onset
	Positive SARS-CoV-2 test taken more than 2 days and less than 8 days from hospital admission	Indeterminate hospital onset
	Positive SARS-CoV-2 test taken more than 7 days and less than 15 days from hospital admission	Probable hospital onset
	Positive SARS-CoV-2 test taken more 14 days from hospital admission	Definite hospital onset

¹ Carter B, Collins JT, Barlow-Pay F, et al. Nosocomial COVID-19 infection: examining the risk of mortality. The COPE-Nosocomial Study (COVID in Older PEople). *Journal of Hospital Infection* 2020; **106**(2): 376-84.

Supplementary Figure 1: Study flowchart



Supplementary Table 3: Admission characteristics stratified by age and sex

Age Group (years)	Female	% Female	Male	% Male	Total cases	% Total Cases
18-44	98	54.1	83	45.9	181	7.2%
45-54	106	46.1	124	53.9	230	9.1%
55-64	144	38.8	227	61.2	371	14.7%
65-74	196	39.0	307	61.0	503	20.0%
75-84	291	42.3	397	57.7	688	27.3%
≥85	314	57.6	231	42.4	545	21.6%

Supplementary Table 4: Effect of varying diagnostic cut-off on burden of nosocomial infection

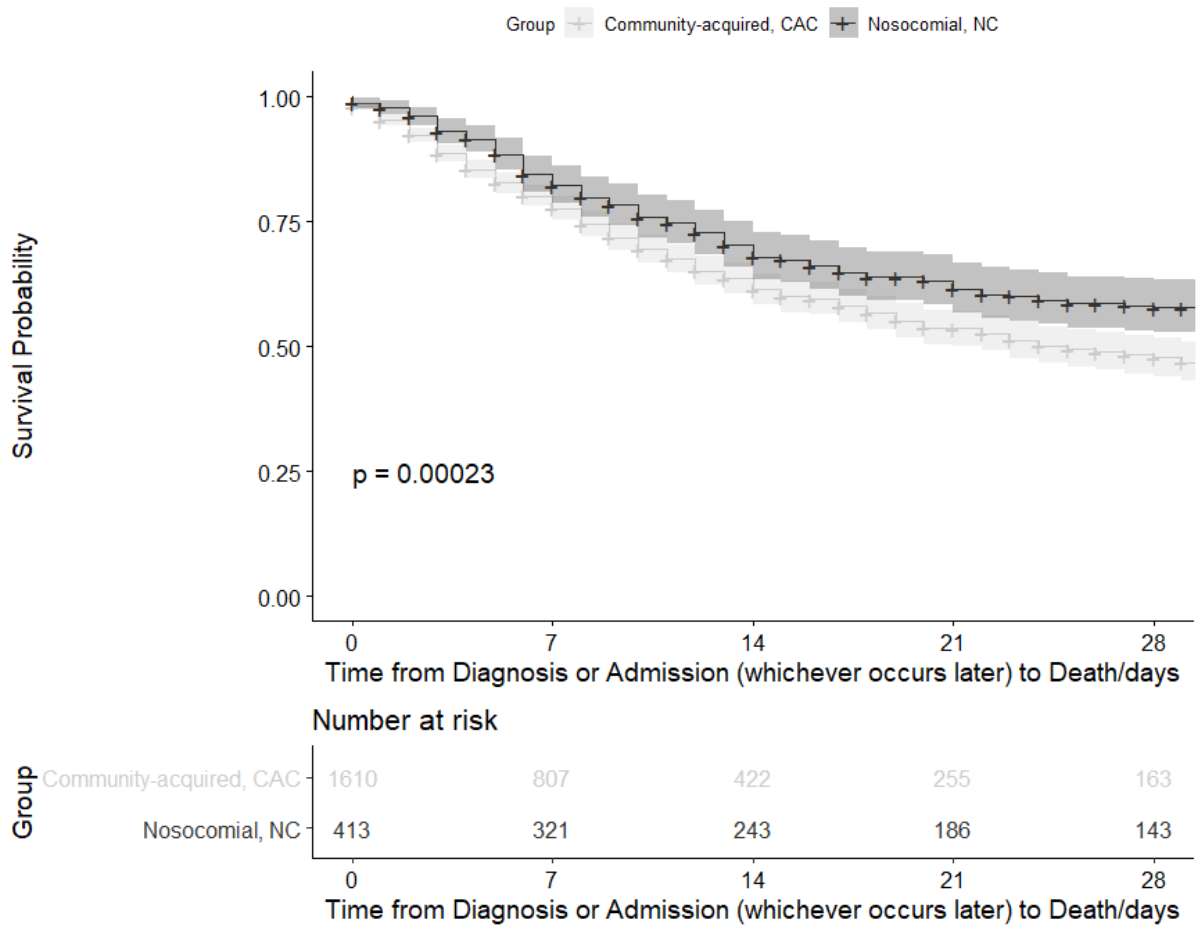
Sensitivity analysis to explore the effect of theoretical and current case definitions across the reported incubation period of SARS-CoV-2 virus. Diagnostic cut-off refers to the number of days elapsed between admission and a positive SARS-CoV-2 test being taken. An interval greater than this threshold is used to define nosocomial covid-19, and an interval less than the threshold

DIAGNOSTIC CUT-OFF	PROBABLE ORIGIN	DIED	DISCHARGED	TOTAL	MORTALITY (%)
>2	Nosocomial	409	594	1003	40.78
≤2	Community	478	1037	1515	31.55
>3	Nosocomial	392	557	949	41.31
≤3	Community	495	1074	1569	31.55
>4	Nosocomial	378	518	896	42.19
≤4	Community	509	1113	1622	31.38
>5	Nosocomial	342	488	830	41.20
≤5	Community	545	1143	1688	32.29
>6	Nosocomial	318	453	771	41.25
≤6	Community	569	1178	1747	32.57
>7	Nosocomial	301	426	727	41.40
≤7	Community	586	1205	1791	32.72
>8	Nosocomial	280	394	674	41.54
≤8	Community	607	1237	1844	32.92
>9	Nosocomial	252	368	620	40.65
≤9	Community	635	1263	1898	33.46
>10	Nosocomial	229	347	576	39.76
≤10	Community	658	1284	1942	33.88
>11	Nosocomial	208	329	537	38.73
≤11	Community	679	1302	1981	34.28
>12	Nosocomial	187	307	494	37.85
≤12	Community	700	1324	2024	34.58
>13	Nosocomial	174	283	457	38.07
≤13	Community	713	1348	2061	34.59
>14	Nosocomial	169	264	433	39.03
≤14	Community	718	1367	2085	34.44
>15	Nosocomial	165	258	423	39.01
≤15	Community	722	1373	2095	34.46

community-acquired covid -19.

Supplementary Figure 2: Kaplan Meier survival plot of nosocomial versus community infection of covid-19 patients.

Sensitivity analysis to investigate the performance of the commonly-used Kaplan Meier Survival Curve to compares survival in Community-acquired (light grey) and Nosocomial-acquired covid-19 infection (dark grey). Survival curves are compared using the log-rank test with 95% confidence interval indicated by shading. Here, censoring of patients into the absorbing state of “discharge” at a disproportionate rate within the Community-acquired covid-19 group leads to inverse interpretation to that seen in competing risks analysis.



Supplementary Table 5: Comparison of community-acquired and nosocomial-acquired covid-19 patient characteristics, based on a diagnostic case testing threshold of 48 hours after admission

Variable, median (IQR)	Diagnosed within first 48 hours of admission “Community-Acquired”	Diagnosed after first 48 hours of admission “Nosocomial-Acquired”	Univariate Significance
N	1515 (60.2%)	1003 (39.8%)	-
Female (n, %)	663(43.8%)	486(48.5%)	0.0394
Age, years	69 (56-80)	79 (71-87)	<0.0001
Total co-morbidities count	2.0 (1.0-4.0)	3.0 (2.0-4.0)	<0.0001
Clinical Frailty Score	3 (2-6) <i>Data available in 864 cases (57%)</i>	6 (4-7) <i>Data available in 445 cases (44%)</i>	<0.0001
Welsh index of multiple deprivation	745 (372-1283) <i>Data available in 1442 cases (95%)</i>	775 (403-1323) <i>Data available in 952 cases (95%)</i>	0.180

Supplementary Table 6: Monthly prevalence of nosocomial infection diagnosis

Month (2020)	Total recorded cases	COPE/ Public Health Wales case definition*	Clinician-recoded diagnosis
		'Definite' nosocomial (%)	Hospital-acquired (%)
March	681	97 (14.2%)	118 (17.3%)
April	1353	216 (16.0%)	224 (16.6%)
May	347	73 (21.0%)	67 (19.3%)
June	135	25 (18.5%)	26 (19.3%)

*Defined by diagnostic PCR testing performed >14 days following hospital admission.

