

Supplementary materials

List of abbreviations

Supplementary tables I-VIII

Supplementary figures I-III

List of abbreviations

PSF	Post-stroke fatigue
QoL	Quality of life
OCSP	Oxfordshire Community Stroke Project
POCI	Posterior circulation infarction
mRS	Modified Rankin scale
RAS	Reticular activating system
fMRI	Functional magnetic resonance imaging
BOLD	Blood-oxygen level dependent
FST	Fronto-striatal-thalamic
MS	Multiple sclerosis
PFC	Prefrontal cortex
GPA	Granulomatosis with polyangiitis
TBI	Traumatic brain injury
CFS	Chronic fatigue syndrome
rs-fMRI	Resting-state functional magnetic resonance imaging
ALFF	Amplitude of low-frequency fluctuations
fALFF	Fractional amplitude of low-frequency fluctuations
CANVAS	Cognition and neocortical volume after stroke study
PHQ-9	Patient Health Questionnaire
DSM-V	Diagnostic and Statistical Manual of Mental Disorders
NIHSS	National Institutes of Health Stroke Scale
GAD-7	Generalised Anxiety Disorder questionnaire
T2DM	Type 2 diabetes mellitus
HVLT-R	Hopkins verbal learning test revised
ROCF	Rey-Osterrieth complex figure task
MP-RAGE	Magnetization-prepared rapid acquisition with gradient echo
TR	Repetition time
TE	Echo time
SPM	Statistical Parametric Mapping
MCAR	Missing completely at random
mPFC	Medial prefrontal cortex

dIPFC

Dorsolateral prefrontal cortex

Supplementary tables

Supplementary Table I

Effect Size Statistics and Interpretations Used for Analyses

Effect Size	Notation	Analysis	Interpretation
Cohen's delta	d	Independent samples t -test	Small = .20, Medium = .50, Large = .80 ^a
Correlation coefficient	r	Mann-Whitney U test	Small = .10, Medium = .30, Large = .50 ^{a, b}
Cramer's V	V	Pearson's chi-square test Fisher's exact test	Small = .10, Medium = .30, Large = .50 ^{a, c}

^a Cohen (1988). ^b Absolute values of the correlation coefficient will be reported to aid interpretation as per Cohen (1988). ^c Interpretation for 1 degree of freedom

Supplementary Table II*Results for Shapiro-Wilks Test of Normality*

Variable	Fatigue Status	W	p-Value (2-tailed)
PHQ-9	Non-fatigued	.81	.006
	Fatigued	.84	<.001
Lesion volume mm ³	Non-fatigued	.70	<.001
	Fatigued	.66	<.001
NIHSS Baseline	Non-fatigued	.91	.150
	Fatigued	.89	.004
Education	Non-fatigued	.95	.482
	Fatigued	.90	.009
Age	Non-fatigued	.86	.022
	Fatigued	.96	.217
GAD-7 Score	Non-fatigued	.73	.001
	Fatigued	.71	<.001
WAIS-III Digit Span z-score	Non-fatigued	.91	.113
	Fatigued	.96	.371
HVLt-R z-score	Non-fatigued	.95	.449
	Fatigued	.97	.467
REY Delay z-score	Non-fatigued	.99	.999
	Fatigued	.96	.237
Cogstate™ detection z-score	Non-fatigued	.96	.750
	Fatigued	.95	.113
Cogstate™ identification z-score	Non-fatigued	.93	.303
	Fatigued	.89	.005
Cogstate™ one-back z-score	Non-fatigued	.95	.594
	Fatigued	.90	.009

Note. N non-fatigued = 18, N fatigued = 45. Degrees of freedom for non-fatigued = 15.

Degrees of freedom for fatigued = 31. W = W-statistic computed from Shapiro-Wilk test;

PHQ-9 = Patient Health Questionnaire⁴⁸; NIHSS = National Institutes of Health Stroke

Scale⁵²; GAD-7 = Generalised Anxiety Disorder questionnaire⁵⁴; WAIS-III = Wechsler Adult

Intelligence Scale 3rd Edition¹⁰⁶; HVLt = Hopkins Verbal Learning Test Revised¹⁰⁷; ROCF

delay = Rey-Osterrieth Complex Figure Delay task¹⁰⁸.

Supplementary Table III*Results for Levene's Test for Equality of Variances for Independent Samples t-test*

Variable	<i>F</i>	<i>p</i> -Value (2-tailed)
PHQ-9	5.73	.020
Lesion volume mm ³	0.06	.814
NIHSS Baseline	0.33	.569
Education	1.61	.210
Age	0.47	.498
GAD-7 Score	1.53	.221
WAIS-III Digit Span <i>z</i> -score	3.06×10^{-5}	.996
HVLT-R <i>z</i> -score	0.30	.585
REY Delay <i>z</i> -score	0.09	.760
Cogstate™ detection <i>z</i> -score	3.02	.088
Cogstate™ identification <i>z</i> -score	0.16	.694
Cogstate™ one-back <i>z</i> -score	1.33	.253

Note. Degrees of freedom = 1. *F* = *F*-statistic computed from Levene's test; PHQ-9 = Patient Health Questionnaire⁴⁸; NIHSS = National Institutes of Health Stroke Scale⁵²; GAD-7 = Generalised Anxiety Disorder questionnaire⁵⁴; WAIS-III = Wechsler Adult Intelligence Scale 3rd Edition¹⁰⁶; HVLT = Hopkins Verbal Learning Test Revised¹⁰⁷; ROCF delay = Rey-Osterrieth Complex Figure Delay task¹⁰⁸.

Supplementary Table IV*Output for Independent Samples t-tests*

Variables	Non-fatigued		Fatigued		<i>t</i> (df)	<i>p</i> (2-tailed)	<i>d</i>
	<i>M</i>	<i>SD</i>	<i>M</i>	<i>SD</i>			
WAIS-III Digit span <i>z</i> -score	-0.13	0.82	-0.03	0.90	-0.40 (59)	.691	.11
HVLT-R <i>z</i> -score	0.28	1.18	0.09	1.10	0.60 (61)	.550	.17
ROCF Delay <i>z</i> - score	0.004	1.20	-0.16	1.22	0.47 (59)	.641	.13
Cogstate™ detection <i>z</i> -score	0.19	0.31	-0.15	0.55	2.46 (60)	.017	.76

Note. WAIS-III = Wechsler Adult Intelligence Scale 3rd Edition¹⁰⁶; HVLT-R = Hopkins Verbal Learning Test Revised¹⁰⁷; ROCF delay = Rey-Osterrieth Complex Figure Delay task¹⁰⁸; *d* = Cohen's delta statistic.

Supplementary Table V

Output for Chi-Square and Fisher's Exact Tests

Variables	Non-fatigued		Fatigued		$\chi^2(df)$	<i>p</i> (2-tailed)	<i>V</i>
	<i>N</i>	%	<i>N</i>	%			
<i>N</i> female	5	27.78	17	37.78	0.57 (1)	.564	.10
<i>N</i> with depression ^a	0	0.00	19	42.22		.001	.42
<i>N</i> with mRS ≥ 2 ^a	4	22.22	15	33.33		.545	.12
Stroke side ^a							
<i>N</i> Left	8	44.44	17	37.78			
<i>N</i> Right	9	50.00	27	60.00		.520	.11
<i>N</i> Bilateral	1	5.56	1	2.22			
Subtype of Ischaemic stroke							
<i>N</i> LACI	4	22.22	6	13.33			
<i>N</i> PACI	9	50.00	26	57.78	0.79 (2)	.686	.11
<i>N</i> POCI	5	27.78	13	28.89			
<i>N</i> TACI	0	0.00	0	0.00			
<i>N</i> with T2DM at baseline ^a	0	0.00	12	26.67		.013	.31
<i>N</i> with ischaemic heart disease at baseline	1	5.56	4	8.89	0.20 (1)	.999	.06
<i>N</i> with hypertension at baseline	9	50.00	27	60.00	0.53 (1)	.576	.09

Note. *V* = Cramer's *V* statistic; mRS = Modified Rankin Scale⁵³; LACI = lacunar cerebral infarction; PACI = partial anterior cerebral infarction; POCI = posterior cerebral infarction; TACI = total anterior cerebral infarction.

^a Analysed via Fisher's exact test and thus a chi-square statistic is not computed/reported.

Supplementary Table VI

Output for Mann-Whitney U Tests

Variables	Non-fatigued		Fatigued		<i>U</i>	<i>Z</i>	<i>p</i>	<i>r</i>
	<i>Mdn</i>	<i>IQR</i>	<i>Mdn</i>	<i>IQR</i>				
Age	67.5	16	71	19	329.5	-1.15	.254	.14
PHQ-9	1	2	4	6	134	-4.16	<.001	.52
NIHSS at baseline	2	3	2	3	372.5	-0.51	.619	.06
GAD-7	0	2	3	3	242.5	-2.52	.011	.32
Education at baseline	12.5	4	11	5	352	-0.81	.422	.10
Lesion volume (ml)	1.90	11.93	1.40	6.83	212	-0.64	.534	.09
Cogstate™ identification	0.05	0.70	-0.12	0.60	377	-0.30	.773	.04
<i>z</i> -score								
Cogstate™ one-back <i>z</i> -score	-0.57	1.45	-0.57	1.73	385.5	-0.16	.874	.02

Note. PHQ-9 = Patient Health Questionnaire⁴⁸; NIHSS = National Institutes of Health Stroke Scale⁵²; GAD-7 = Generalised Anxiety Disorder questionnaire⁵⁴; *Mdn* = median; *IQR* = interquartile range; *U* = *U*-statistic from Mann-Whitney *U* test; *Z* = standardised *U* statistic; *r* = correlation coefficient.

Supplementary Table VII

z-fALFF Results for Fatigued vs Non-Fatigued Analysis in the 0.01-0.08 Hz Band Excluding the Participant with Lesion Overlap

Region	Hemisphere	x	y	z	Peak <i>p</i> (unc)	Cluster <i>p</i> (FDR-corr)	<i>k</i>	<i>T</i>	<i>Z</i>
<i>z-fALFF 0.01–0.08 non-fatigued > fatigued patients (age, sex, NIHSS)</i>									
calcarine cortex	bilateral	6	-84	-3	<.001	.023	53	4.22	3.92
		-3	-84	-3	<.001			4.06	3.79
		3	-75	9	<.001			3.47	3.29
lingual gyrus	left	-9	-72	3	<.001	.185	23	4.36	4.03
<i>z-fALFF 0.01–0.08 fatigued > fatigued patients (age, sex, NIHSS)</i>									
mPFC	bilateral	-6	66	9	<.001	.219	25	3.65	3.44
		0	66	18	<.001			3.64	3.44

Note. *z-fALFF* = *z*-transformed values of fractional amplitude of low-frequency fluctuations; *unc* = uncorrected; *FDR-corr* = false discovery rate corrected; *k* = size of cluster in voxels; *T* = *t*-statistic; *Z* = *z*-transformed *t*-statistic; mPFC = medial prefrontal cortex; NIHSS = National Institutes of Health Stroke Scale⁵²; *x*, *y*, *z* = coordinates in MNI space (mm).

Supplementary Table VIII

z-fALFF Results for Depressed Fatigued vs Non-Depressed Fatigued Analysis in the 0.01 – 0.08 Hz Band

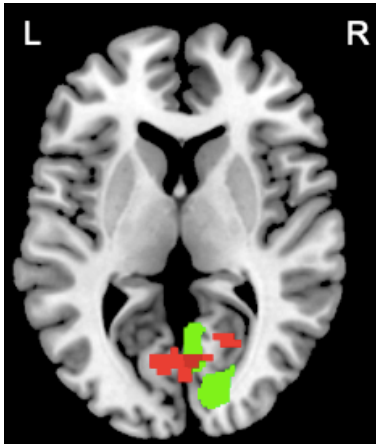
Region	Hemisphere	x	y	z	Peak <i>p</i> (unc)	Cluster <i>p</i> (FDR- corr)	<i>k</i>	<i>T</i>	<i>Z</i>
z-fALFF 0.01–0.08 depressed > non-depressed patients (age, sex, NIHSS)									
dlPFC	Left	-36	21	45	<.001	.019	57	4.46	3.99
		-21	30	57	<.001			4.28	3.86
		-33	33	48	<.001			4.18	3.78

Note. *z*-fALFF = *z*-transformed values of fractional amplitude of low-frequency fluctuations; unc = uncorrected; FDR-corr = false discovery rate corrected; *k* = size of cluster in voxels; *T* = magnitude of *t*-statistic; *Z* = *z*-transformed *t*-statistic; mPFC = medial prefrontal cortex; NIHSS = National Institutes of Health Stroke Scale⁵²; *x*, *y*, *z* = coordinates in MNI space (mm).

Supplementary figures

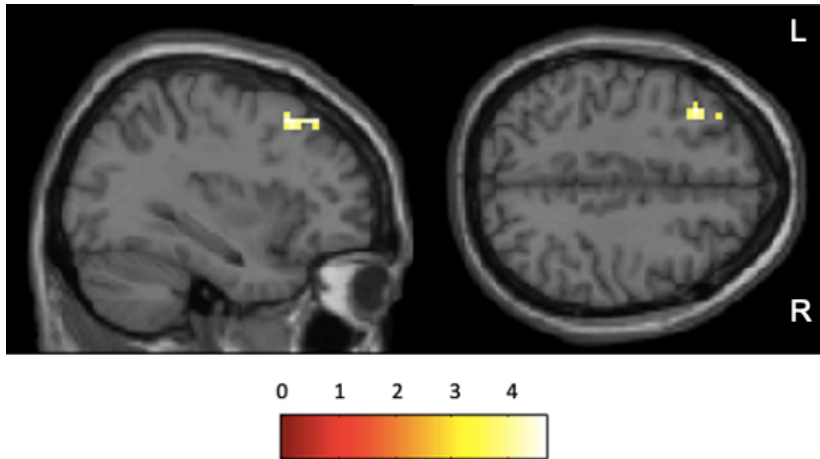
Supplementary Figure I

One Participant's Lesion Overlap with Significant Posterior Clusters from Fatigued vs Non-Fatigued 0.01 – 0.08 Hz and Slow-4 Analyses. Participant lesion is shown in green and significant posterior clusters from fatigued vs non-fatigued analysis in the 0.01 – 0.08 Hz band and slow-4 band (0.027 – 0.073 Hz) are shown in red. Note the clear overlap of the lesion and the calcarine cluster.



Supplementary Figure II

Main Results for Depressed Fatigued vs Non-Depressed Fatigued Analysis in the 0.01 – 0.08 Hz Band. Results for depressed fatigued > non-depressed fatigue contrast. The colour bar represents the magnitude of the t-statistic computed from the analysis.



Supplementary Figure III

Overlay of Significant Clusters for Main Analysis (Fatigued vs Non-Fatigued) and Secondary Analysis (Depressed Fatigued vs Non-Depressed Fatigued). Results of the main group comparison (fatigued vs non-fatigued) for all frequencies are shown in red. Results of the secondary group comparison (depressed fatigued vs non-depressed fatigued) for 0.01 – 0.08 Hz are shown in blue. The absence of an overlap suggests that although fatigue in the current study is measured as part of the PHQ-9 (depression) questionnaire, the brain correlates attributable to fatigue and depression can be dissociated.

