

## Torque teno virus load predicts allograft rejection but not viral infection after kidney transplantation

<b>Authors</b>	<b>ORCID iD</b>
Aline L van Rijn <sup>1</sup>	0000-0003-0438-5350
Herman F Wunderink <sup>1,*</sup>	0000-0001-9491-0790
Igor A Sidorov <sup>1</sup>	0000-0001-6519-4983
Caroline S de Brouwer <sup>1</sup>	0000-0001-9117-6658
Aloysius CM Kroes <sup>1</sup>	0000-0002-9866-2461
Hein Putter <sup>3</sup>	0000-0001-5395-1422
Aiko PJ de Vries <sup>2</sup>	0000-0002-9284-3595
Joris I Rotmans <sup>2</sup>	0000-0001-9682-6234
Mariet CW Feltkamp <sup>1</sup>	0000-0001-5993-9846

<sup>1</sup> *Department of Medical Microbiology, Leiden University Medical Center, The Netherlands*

<sup>2</sup> *Department of Internal Medicine, Leiden University Medical Center, The Netherlands*

<sup>3</sup> *Department of Biomedical Data Sciences, Leiden University Medical Center, The Netherlands*

\*Current address: *Department of Medical Microbiology, University Medical Center Utrecht, The Netherlands*

Corresponding author email: AL van Rijn, [A.L.van\\_Rijn.MM@lumc.nl](mailto:A.L.van_Rijn.MM@lumc.nl)

### Abbreviations

BKPyV	BK polyomavirus
CI	Confidence interval
CNI	Calcineurin inhibitor
ESDR	End stage renal disease
HR	Hazard ratio
IQR	Inter quartile range
KTx	Kidney transplantation
LOD	Limit of detection
LUMC	Leiden University Medical Center
qPCR	Quantitative PCR
SOTx	Solid organ transplantation
t	time
TTV	Torque teno virus

## **Authorship**

AvR, JR, HW and MF designed cohort and the study. CdB performed the laboratory measurements. The biostatistical analysis was planned by IS and HP, and performed by AvR. AK, JR and MF provided resources. HW, IS, CdB and AdV provided critical feedback on the manuscript written by AvR under supervision of JI and MF.

## **Disclosure**

The authors declare no conflicts of interest.

## **Funding**

This study was supported in part by the Dutch Kidney Foundation, grant 13A1D302, and by an Excellent Student grant for Aline van Rijn by the Leiden University Medical Center.

Wordcount: 2499

1 **Abstract**

2 The main challenge of immunosuppressive therapy after solid organ transplantation is to create a  
3 new immunological balance that prevents organ rejection and does not promote opportunistic  
4 infection. Torque teno virus (TTV) a ubiquitous and non-pathogenic single-stranded DNA virus has  
5 been proposed as a marker of functional immunity in immunocompromised patients. Here  
6 investigate whether TTV loads predict the risk of common viral infection and allograft rejection in  
7 kidney transplantation recipients.

8 In a retrospective cohort of 389 kidney transplantation recipients, individual TTV loads in were  
9 measured by qPCR in consecutive plasma samples during one year follow-up. The endpoints were  
10 allograft rejection, BK polyomavirus (BKPyV) viremia and cytomegalovirus (CMV) viremia. Repeated  
11 TTV measurements and rejection and infection survival data were analysed in a joint model.

12 During follow-up, TTV DNA detection in the transplant recipients increased from 85 to 100%. The  
13 median viral load increased to  $10^7$  genome copies/ml within three months after transplantation.

14 Rejection, BKPyV viremia and CMV viremia occurred in 23%, 27% and 17% of the patients,  
15 respectively. With every 10-fold TTV load-increase, the risk of rejection decreased considerably (HR:  
16 0.74, CI 95%: 0.71-0.76), while the risk of BKPyV and CMV viremia remained the same (HR: 1.03, CI  
17 95%: 1.03-1.04 and HR: 1.01, CI 95%: 1.01-1.01).

18 In conclusion, TTV load kinetics predict allograft rejection in kidney transplantation recipients, but  
19 not the BKPyV and CMV infection. The potential use of TTV load levels as a guide for optimal  
20 immunosuppressive drug dosage to prevent allograft rejection deserves further validation.

## 21 **Introduction**

22 The optimum level of immunosuppression after solid organ transplant (SOTx) varies between  
23 individuals and optimal dosing of these essential drugs can be difficult. As a consequence, SOTx  
24 recipients experience a number of complications ranging from development of *de novo* donor  
25 specific antibodies and allograft rejection, due to insufficient immunosuppression, to infection as the  
26 result of over-immunosuppression. Monitoring individual therapeutic drug levels does not solve this  
27 issue, because immunosuppressive trough levels poorly correlate with development of rejection <sup>1, 2</sup>.

28 Therefore, there is a call for a reliable biomarker of functional immunity in patients that receive  
29 immunosuppressive therapy. Such biomarker could provide assistance in balancing the individual  
30 immunosuppressive medication and anticipate the risk of both rejection and infection.

31 Kidney transplantation (KTx) recipients may experience multiple infections of diverse origin. A large  
32 proportion is caused by viruses that cause persistent, asymptomatic infection in the general  
33 population, but start replicating freely destroying tissues in the absence of functional immunity. BK  
34 polyomavirus (BKPyV) for instance, found in blood (viremia) in approximately 30% of KTx recipients,  
35 causes BKPyV-associated nephropathy (BKPyVAN) and loss of allograft function in up to 10% <sup>3</sup>.  
36 Furthermore, without prophylaxis cytomegalovirus (CMV) infection occurs in ~20% of KTx recipients,  
37 causing invasive disease involving multiple organs with substantial morbidity and mortality, if left  
38 untreated <sup>4</sup>.

39 Infection and rejection frequently require adjustment of immunosuppressive medication to  
40 compensate for the overimmunosuppression and underimmunosuppression <sup>3, 5-7</sup>. Unfortunately, a  
41 valid biomarker that indicates overimmunosuppression and underimmunosuppression is lacking.  
42 Torque teno virus (TTV) load has been proposed as a surrogate marker of functional immunity that  
43 might be useful by predicting the risk of rejection and infection in SOTx recipients <sup>8</sup>.

44 TTVs are small, single-stranded DNA-viruses that infect everyone without causing documented  
45 disease<sup>9-11</sup>. Thus far twenty-nine species described by the International Committee on Taxonomy of  
46 Viruses (ICTV)<sup>12</sup>. In immune competent individuals, the adaptive cellular immune responses control  
47 TTV infection<sup>13</sup>. TTV blood levels might therefore mirror the efficacy of the immune system in  
48 immunosuppressed SOTx patients, with high TTV DNA loads indicating too much  
49 immunosuppression and concomitant risk of infection, and low TTV loads indicating too little  
50 immunosuppression and risk of rejection.

51 Several studies have investigated the association between TTV load and infection and rejection in  
52 SOTx patients. While some indicated an association between infection and high/increasing TTV load  
53<sup>14-18</sup>, and some between rejection and low/decreasing TTV load<sup>14, 15, 19-23</sup>, others were unable to  
54 confirm these associations<sup>24-26</sup>. The ambiguity of these results calls for more systematic study into  
55 these associations.

56 In the present study, we determined TTV load kinetics in blood from KTx recipients drawn before  
57 and after KTx, and explored its association with development of kidney rejection and of two  
58 common post-KTx viral infections (BKPyV and CMV). A joint model was built to analyse these  
59 longitudinal endpoints with the repeated TTV load measurements. With the help of this integrated  
60 approach analysing TTV loads against clinical endpoints at opposite ends of the immunosuppression  
61 spectrum, the potential use of TTV as a universal biomarker of functional immunity was assessed.

62

## 63 **Materials and Methods**

### 64 Cohort and sampling

65 This study uses a pre-existing retrospective KTx cohort of 407 adult KTx donor and recipient pairs,  
66 extensively described by Wunderink *et al.* <sup>3, 27, 28</sup>, transplanted between 2003-2013 in the Leiden  
67 University Medical Center (LUMC) in the Netherlands. In the current study, only recipients of living  
68 donors were included. Blood samples used for TTV DNA detection were collected pre-  
69 transplantation, and 1.5, 3, 6, 9 and 12 months after transplantation. If no pre-transplantation  
70 sample or less than two post-transplantation samples were available, the recipient was excluded  
71 (**Supplement 1**). As a result, 389 KTx recipients with a total of 1663 samples were included.  
72 Recorded baseline characteristics are age, sex, underlying renal condition, dialysis vintage and type  
73 of maintenance immunosuppressive treatment.

74 The study protocol was approved by the local scientific committee and submitted to the medical  
75 ethics committee of the LUMC, who declared no objection. We adhered to the STROBE statement  
76 for reporting observational studies <sup>29</sup>.

77

### 78 TTV load (Predictor)

79 For TTV load detection DNA was extracted from 200  $\mu$ L of each blood serum and plasma sample, as  
80 described previously <sup>3</sup>. A detailed description of TTV load detection by qPCR can be found in  
81 **Supplement 2**. Measured TTV loads were  $\log_{10}$ -transformed, as per general convention for viral load.  
82 Determined TTV loads below the LOD were set to  $\text{LOD}/\sqrt{2}$  to approximate the assumed normal  
83 distribution of very weakly positive and negative loads <sup>33</sup>.

84

85 *BKPyV viremia and CMV viremia (Infection endpoints)*

86 The first and second endpoint of this study were the development of BKPyV and CMV viremia,  
87 respectively, defined as the first day after transplantation on which viral DNA is detected in the  
88 blood. The presence of BKPyV DNA in the samples was determined by qPCR in a previous study<sup>3</sup>.  
89 CMV load data were obtained from blood plasma samples previously collected based on clinical  
90 suspicion and analysed by qPCR for the presence of CMV DNA<sup>34</sup>. The median follow-up was 9.36  
91 months for BKPyV viremia and 12 months for CMV viremia, calculated with the reverse Kaplan Meier  
92 method<sup>35</sup>, because participants without BKPyV viremia were censored on the day of their last BKPyV  
93 screening. From 2008 onwards, all recipients received CMV prophylaxis for 90 days except for  
94 seronegative recipients with a seronegative donor. (**Table 2**).

95

96 *Kidney allograft rejection (Rejection endpoint)*

97 Allograft rejection was the third endpoint in this study. Allograft rejection was defined as the first  
98 initiation of rejection treatment after transplantation. In some patients, rejection treatment was  
99 initiated without prior histological confirmation of allograft rejection if clinical suspicion was high  
100 and alternative explanations were excluded. Suspicion of rejection included increased serum  
101 creatinine levels, low concentration of immunosuppressive medications and allograft biopsy with  
102 histological evidence of rejection. First rejection treatment consisted of 1000 mg  
103 methylprednisolone intravenously for three days. The median follow-up for rejection was 12  
104 months, calculated with the reverse Kaplan Meier method<sup>35</sup>, meaning that every participant  
105 completed the full follow-up period if they did not develop rejection.

106

107 Statistical analysis

108 Statistical software R version 3.5.3 was used for all statistics<sup>36</sup>. The figures, survival analyses and  
109 joint models were made with the appropriate R packages<sup>37-41</sup>. The baseline characteristics were  
110 compared with chi-squared or two-tailed Student's *t*-test.

111 A linear mixed effects model was fitted on the TTV loads. This model models the mean progression  
112 of the TTV load over time, using effects that are the same for every individual – the fixed effects –  
113 and effects that are unique for every individual – the random effects. A detailed description of the  
114 linear mixed effects model can be found in **Supplement 3**. The model was combined with a survival  
115 analysis for the endpoints, in a so-called joint model analysis<sup>40</sup>. This model estimates the risk rate of  
116 the events in cox-proportional hazards model, based on the modelled TTV loads. Three joint model  
117 analyses were performed, to accommodate the survival analysis for each endpoint - BKPyV viremia,  
118 CMV viremia and rejection. The association between a 1 log change in TTV load and the time-to-  
119 event is reported as hazard ratio (HR).



120 **Results**

121 *Incidence of viremia, and relation to population baseline characteristics*

122 During follow-up, 105 out of 389 KTx recipients (27%) developed BKPyV viremia and 77 (20%)  
123 developed CMV viremia within one year after transplantation (**Table 1, Figure 1**). Baseline  
124 characteristics were comparable across BKPyV viremia and non-BKPyV viremia groups. CMV viremia  
125 was observed less often after 2008 (**Table 2**), which could be related to the start of CMV prophylaxis  
126 use<sup>42</sup>. Also, in 2008, the use tacrolimus was initiated (11% before, 97% during and after 2008). This  
127 explains why the non-CMV viremia group had received tacrolimus more often (**Table 1**).

128

129 *Incidence of rejection, and relation to population baseline characteristics*

130 Allograft rejection developed in 88 KTx recipients (23%) within one year after KTx (**Figure 1**).  
131 Nineteen percent (58/300) of patients who received tacrolimus developed rejection, opposed to  
132 34% (30/89) of patients receiving cyclosporine A, which is probably related to the larger  
133 immunosuppressive potential of tacrolimus over cyclosporine A (**Table 1**)<sup>43</sup>. Furthermore, 72%  
134 (63/88) of the recipients with rejection had a history of dialysis, compared to 57% (171/301) of the  
135 recipients without rejection. This association was also found in the joint model analysis discussed  
136 below. This association might have been confounded by a lower degree of HLA mismatch, since pre-  
137-emptive transplantations often involve family members.

138

139 *TTV load kinetics*

140 TTV DNA load was determined in 1663 samples from 389 eligible patients, with 2-5 measurements  
141 per patient. A visualisation of the measured TTV loads over time is shown in **Figure 2**. The median  
142 TTV load at baseline was the equivalent of 5012 genome copies/ml which is 3.7 log (Inter quartile  
143 range (IQR) 2.6-4.7). TTV loads below the LOD were observed in 15% of the subjects. During one year

144 follow-up after transplantation, detectable TTV loads were obtained in all recipients. The median  
145 TTV load detected was 5.2 log copies/ml (IQR 3.9-6.5) at 1.5 months, 7.4 (IQR 5.9-8.9) at 3 months,  
146 6.1 (IQR 4.5-7.8) at 6 months, and 5.2 (IQR 4.0-6.4) at 12 months.

147

#### 148 TTV load model

149 For further analysis, the TTV loads were modelled in a linear mixed effects model (**Table 3**). The final  
150 model contained the baseline TTV load ( $\beta_0$ ), and fixed coefficients  $\beta_1$ ,  $\beta_2$ ,  $\beta_3$ ,  $\beta_4$  and  $\beta_5$ , written in  
151 formula as:  $y_{ij} = \beta_0 + \beta_1 * t_{ij} + \beta_2 * t_{ij}^2 + \beta_3 * t_{ij}^3 + \beta_4 * tacrolimus_i + \beta_5 * dialysis_i +$   
152  $b_{i0} + b_{i1} * t_{ij} + b_{i2} * t_{ij}^2 + \varepsilon_{ij}$ . The other tested covariates (sex, age, and underlying condition;  
153 **Table 1**) did not improve the prediction of the progression of the TTV load over time. Receiving  
154 tacrolimus instead of cyclosporine A and having a history of dialysis both correspond to a higher TTV  
155 load ( $\beta_4$ : 0.51, 95% confidence interval (CI): 0.16-0.86,  $\beta_5$ : 0.46, 95% CI: 0.16-0.76). The variation in  
156 the random effects per individual,  $b_{i0}$ ,  $b_{i1}$  and  $b_{i2}$ , and the residual variation over all individuals and  
157 time points,  $\varepsilon_{ij}$ , is reported as standard deviation ( $\sigma$ ) around the mean (**Table 3**). To illustrate the  
158 individualized predictions of the linear mixed model, three example patients with their observed and  
159 predicted TTV loads are shown in **Figure 2**.

160

#### 161 TTV load and development of infection and rejection

162 To compare the TTV load kinetics with the study endpoints, three joint models were built; for BKPyV  
163 viremia, CMV viremia and rejection, respectively. The joint model analyses for BKPyV and CMV  
164 showed no association between changing TTV loads and development of viremia, with hazard ratios  
165 close to one (1.03 95% CI: 1.03-1.04 and 1.01 95% CI: 1.00-1.01 respectively; **Table 4**). For rejection a  
166 significant, inverse association was found between increasing TTV load and the time-to-rejection:  
167 with every 10-fold (1 log) TTV load-increase, the risk of rejection decreased with a HR of 0.74 (95%  
168 CI: 0.71-0.76) (**Table 4**).

169 **Discussion**

170 With the help of joint modelling of KTx cohort data, we analysed TTV load kinetics after KTx and  
171 explored the association between TTV load and frequent complications of immunosuppression. We  
172 showed that an increase of TTV load corresponds to a lower risk of rejection and an equal risk of  
173 CMV and BKPyV infection. This observation partially supports the hypothesis that the TTV load  
174 reflects the functional immune status of KTx patients. Furthermore, it puts TTV forward as a useful  
175 biomarker of functional immunity in SOTx patients, to predict allograft rejection.

176 The observed effect of TTV load on the risk of developing rejection was quite strong (HR of 0.74 per  
177 log TTV load increase), especially if one considers the median TTV load-increase of 3 log observed  
178 after transplantation. This implies that patients with substantial TTV load increase, like Patient 1 in  
179 Figure 2, have a much lower chance of developing rejection than Patients 2 and 3 who displayed a  
180 limited TTV load increase. More detailed study is needed to pinpoint the period after KTx that offers  
181 the biggest power to predict the chance of rejection.

182 Our results are in line with findings from earlier, smaller studies that reported an inverse association  
183 between TTV load and rejection<sup>23,44</sup>, and the absence of association between TTV load and BKPyV  
184 and CMV infection<sup>26</sup>. However, some studies did show an association between TTV load-increase  
185 and infectious complications. This discrepancy may be due to differences in study population, start  
186 and duration of follow-up, pathogens studied and/or modelling method<sup>45-47</sup>.

187 Our observation that the risk of BKPyV viremia was not related with TTV-load nor with any of the  
188 other covariates, fits with findings from one of our previous studies aimed at identifying risk factors  
189 for BKPyV infection<sup>3</sup>. In that study performed within the same cohort, we showed that the risk of  
190 BKPyV viremia is primarily governed by the BKPyV infection risk imposed by the donor, which can be  
191 estimated based on pre-KTx donor BKPyV IgG seroreactivity, and much less dependent on the  
192 immune status of the recipient.

193 Comparable to BKPyV, we did not find an association between the incidence of CMV viremia and TTV  
194 load. However, in the case of CMV, the lack of such an association is more difficult to interpret, since  
195 it could be partially masked by the use of anti-viral prophylaxis (**Table 2**). Prophylaxis-stratified  
196 analyses were attempted but the model failed to converge due to insufficient observations<sup>48, 49</sup>.  
197 Additional stratified analyses with larger sample sizes are advisable for future research.

198 When analysing the TTV load kinetics with the help of a mixed model, it is clear that the variation in  
199 random effects largely explains the interpatient variability in TTV load. This is because the variability  
200 is not explained by the covariates we tested, except for type of immune suppression and dialysis  
201 vintage. This promotes the potential value of TTV as a biomarker even more, because interpatient  
202 variability in TTV loads signifies high-risk and low-risk patients on top of the known risk factors.

203 Our study has several strengths that increase the validity of the findings. First of all, the used PCR  
204 primer set targets several TTV species at once, which is favourable since a recent study shows the  
205 interindividual variability in TTV species is large<sup>50</sup>. Second, the use of a joint model allows the  
206 longitudinal TTV measurements to be used as predictor of time to viremia and to rejection. A  
207 common pitfall of analysing this type of data is introducing ‘immortal time’ bias, which is  
208 circumvented by the joint model approach.

209 Regarding potential weaknesses, our study might have overestimated the actual number of rejection  
210 episodes. Of 88 patients with high clinical suspicion of a rejection episode, 80 had undergone a  
211 biopsy, and in 68% of them there was clear histological evidence for rejection, which may cause an  
212 underestimation of the true effect. Future study with biopsy-confirmed rejection is needed for a  
213 more precise approximation of the predictive effect of the TTV load.

214 In conclusion, while TTV load changes fail to predict the risk of BKPyV and CMV infection within the  
215 first year after KTx, they strongly predict the development of allograft rejection. Hence, the use of  
216 TTV loads as a predictive biomarker for allograft rejection and optimal immunosuppressive dosage

217 deserves further exploration, in KTx patients and in SOTx patients in general, as it could improve  
218 patient care and allograft survival.

## 219 **References**

- 220 1. Bouamar R, Shuker N, Hesselink DA, et al. Tacrolimus predose concentrations do not predict  
221 the risk of acute rejection after renal transplantation: a pooled analysis from three randomized-  
222 controlled clinical trials(dagger). *Am J Transplant*. May 2013;13(5):1253-61. doi:10.1111/ajt.12191
- 223 2. Percy C, Hassoun Z, Mourad M, et al. Impact of Acute Infection Requiring Hospitalization on  
224 Tacrolimus Blood Levels in Kidney Transplant Recipients. *Transplant Proc*. Nov 2017;49(9):2065-  
225 2069. doi:10.1016/j.transproceed.2017.09.019
- 226 3. Wunderink HF, van der Meijden E, van der Blij-de Brouwer CS, et al. Pretransplantation  
227 Donor-Recipient Pair Seroreactivity Against BK Polyomavirus Predicts Viremia and Nephropathy  
228 After Kidney Transplantation. *Am J Transplant*. Jan 2017;17(1):161-172. doi:10.1111/ajt.13880
- 229 4. Brennan DC. Cytomegalovirus in renal transplantation. *J Am Soc Nephrol*. Apr  
230 2001;12(4):848-55.
- 231 5. Razonable RR, Humar A, Practice ASTIDCo. Cytomegalovirus in solid organ transplantation.  
232 *Am J Transplant*. Mar 2013;13 Suppl 4:93-106. doi:10.1111/ajt.12103
- 233 6. Bohl DL, Brennan DC. BK virus nephropathy and kidney transplantation. *Clin J Am Soc*  
234 *Nephrol*. Jul 2007;2 Suppl 1:S36-46. doi:10.2215/CJN.00920207
- 235 7. van Rijn AL, Wunderink HF, de Brouwer CS, van der Meijden E, Rotmans JI, Feltkamp MCW.  
236 Impact of HPyV9 and TSPyV coinfection on the development of BK polyomavirus viremia and  
237 associated nephropathy after kidney transplantation. *J Med Virol*. Jan 9 2019;doi:10.1002/jmv.25397
- 238 8. Reza Hosseini O, Drabe CH, Sorensen SS, et al. Torque-Teno virus viral load as a potential  
239 endogenous marker of immune function in solid organ transplantation. *Transplant Rev (Orlando)*. Jul  
240 2019;33(3):137-144. doi:10.1016/j.trre.2019.03.004
- 241 9. Vu DL, Kaiser L. The concept of commensal viruses almost 20 years later: redefining borders  
242 in clinical virology. *Clin Microbiol Infect*. Oct 2017;23(10):688-690. doi:10.1016/j.cmi.2017.03.005
- 243 10. Griffiths P. Time to consider the concept of a commensal virus? *Rev Med Virol*. Apr-Jun  
244 1999;9(2):73-4.
- 245 11. Cossart Y. TTV a common virus, but pathogenic? *Lancet*. Jul 18 1998;352(9123):164.  
246 doi:10.1016/S0140-6736(05)77802-8
- 247 12. Walker PJ, Siddell SG, Lefkowitz EJ, et al. Changes to virus taxonomy and the International  
248 Code of Virus Classification and Nomenclature ratified by the International Committee on Taxonomy  
249 of Viruses (2019). *Arch Virol*. Sep 2019;164(9):2417-2429. doi:10.1007/s00705-019-04306-w
- 250 13. Haloschan M, Bettesch R, Gorzer I, Weseslindtner L, Kundi M, Puchhammer-Stockl E. TTV  
251 DNA plasma load and its association with age, gender, and HCMV IgG serostatus in healthy adults.  
252 *Age (Dordr)*. 2014;36(5):9716. doi:10.1007/s11357-014-9716-2
- 253 14. Jaksch P, Michael K, Irene G, et al. Torque Teno Virus as a novel biomarker targeting the  
254 efficacy of immunosuppression after lung transplantation. *J Infect Dis*. Jul 20  
255 2018;doi:10.1093/infdis/jiy452
- 256 15. Frye BC, Bierbaum S, Falcone V, et al. Kinetics of Torque Teno Virus-DNA Plasma Load Predict  
257 Rejection in Lung Transplant Recipients. *Transplantation*. Sep 17  
258 2018;doi:10.1097/TP.0000000000002436
- 259 16. Fernandez-Ruiz M, Albert E, Gimenez E, et al. Monitoring of alphatorquevirus DNA levels for  
260 the prediction of immunosuppression-related complications after kidney transplantation. *Am J*  
261 *Transplant*. Oct 22 2018;doi:10.1111/ajt.15145
- 262 17. Beland K, Dore-Nguyen M, Gagne MJ, et al. Torque Teno virus in children who underwent  
263 orthotopic liver transplantation: new insights about a common pathogen. *J Infect Dis*. Jan 15  
264 2014;209(2):247-54. doi:10.1093/infdis/jit423
- 265 18. Strassl R, Schiemann M, Doberer K, et al. Quantification of Torque Teno Virus Viremia as a  
266 Prospective Biomarker for Infectious Disease in Kidney Allograft Recipients. *J Infect Dis*. Sep 8  
267 2018;218(8):1191-1199. doi:10.1093/infdis/jiy306

- 268 19. Gorzer I, Jaksch P, Strassl R, Klepetko W, Puchhammer-Stockl E. Association between plasma  
269 Torque teno virus level and chronic lung allograft dysfunction after lung transplantation. *J Heart*  
270 *Lung Transplant*. Mar 2017;36(3):366-368. doi:10.1016/j.healun.2016.10.011
- 271 20. Ruiz P, Martinez-Picola M, Santana M, et al. Torque Teno Virus is associated with the state of  
272 immune suppression early after liver transplantation. *Liver Transpl*. Oct 30  
273 2018;doi:10.1002/lt.25374
- 274 21. Simonetta F, Pradier A, Masouridi-Levrat S, et al. Torque Teno Virus Load and Acute  
275 Rejection After Orthotopic Liver Transplantation. *Transplantation*. Jul 2017;101(7):e219-e221.  
276 doi:10.1097/TP.0000000000001723
- 277 22. De Vlamincq I, Khush KK, Strehl C, et al. Temporal response of the human virome to  
278 immunosuppression and antiviral therapy. *Cell*. Nov 21 2013;155(5):1178-87.  
279 doi:10.1016/j.cell.2013.10.034
- 280 23. Strassl R, Doberer K, Rasoul-Rockenschaub S, et al. Torque Teno Virus for Risk Stratification  
281 of Acute Biopsy-proven Alloreactivity in Kidney Transplant Recipients. *J Infect Dis*. Jan 18  
282 2019;doi:10.1093/infdis/jiz039
- 283 24. Norden R, Magnusson J, Lundin A, et al. Quantification of Torque Teno Virus and Epstein-  
284 Barr Virus Is of Limited Value for Predicting the Net State of Immunosuppression After Lung  
285 Transplantation. *Open Forum Infect Dis*. Apr 2018;5(4):ofy050. doi:10.1093/ofid/ofy050
- 286 25. Takemoto AY, Okubo P, Saito PK, et al. Torque teno virus among dialysis and renal-transplant  
287 patients. *Braz J Microbiol*. Mar 2015;46(1):307-11. doi:10.1590/S1517-838246120131195
- 288 26. Handala L, Descamps V, Morel V, et al. No correlation between Torque Teno virus viral load  
289 and BK virus replication after kidney transplantation. *J Clin Virol*. Jul 2019;116:4-6.  
290 doi:10.1016/j.jcv.2019.03.018
- 291 27. Wunderink HF, Haasnoot GW, de Brouwer CS, et al. Reduced Risk of BK Polyomavirus  
292 Infection in HLA-B51-positive Kidney Transplant Recipients. *Transplantation*. Mar 2019;103(3):604-  
293 612. doi:10.1097/TP.0000000000002376
- 294 28. Wunderink HF, De Brouwer CS, Gard L, et al. Source and Relevance of the BK Polyomavirus  
295 Genotype for Infection After Kidney Transplantation. *Open Forum Infect Dis*. Mar 2019;6(3):ofz078.  
296 doi:10.1093/ofid/ofz078
- 297 29. von Elm E, Altman DG, Egger M, et al. Strengthening the Reporting of Observational Studies  
298 in Epidemiology (STROBE) statement: guidelines for reporting observational studies. *BMJ*. Oct 20  
299 2007;335(7624):806-8. doi:10.1136/bmj.39335.541782.AD
- 300 30. Niesters HG. Quantitation of viral load using real-time amplification techniques. *Methods*.  
301 Dec 2001;25(4):419-29. doi:10.1006/meth.2001.1264
- 302 31. Maggi F, Pifferi M, Fornai C, et al. TT virus in the nasal secretions of children with acute  
303 respiratory diseases: relations to viremia and disease severity. *J Virol*. Feb 2003;77(4):2418-25.
- 304 32. Okamoto H, Nishizawa T, Ukita M, et al. The entire nucleotide sequence of a TT virus isolate  
305 from the United States (TUS01): comparison with reported isolates and phylogenetic analysis.  
306 *Virology*. Jul 5 1999;259(2):437-48. doi:10.1006/viro.1999.9769
- 307 33. Hornung R, Reed L. Estimation of Average Concentration in the Presence of Non-detectable  
308 Values. *App Occup Environ Hyg*. 1990;5:46-51.
- 309 34. Kalpoe JS, Kroes AC, de Jong MD, et al. Validation of clinical application of cytomegalovirus  
310 plasma DNA load measurement and definition of treatment criteria by analysis of correlation to  
311 antigen detection. *J Clin Microbiol*. Apr 2004;42(4):1498-504. doi:10.1128/jcm.42.4.1498-1504.2004
- 312 35. Schemper M, Smith TL. A note on quantifying follow-up in studies of failure time. *Control*  
313 *Clin Trials*. Aug 1996;17(4):343-6.
- 314 36. *R: A Language and Environment for Statistical Computing*. Version 3.5.2. R Foundation for  
315 Statistical Computing; 2018. <https://www.R-project.org/>
- 316 37. Wickham H. *ggplot2: Elegant Graphics for Data Analysis*. Springer-Verlag; 2016.
- 317 38. Kassambara A, Kosinski M. *survminer: Drawing Survival Curves using 'ggplot2'*. 2018;  
318 <https://CRAN.R-project.org/package=survminer>

- 319 39. Thernau T, Gramsch P. *Modeling Survival Data: Extending the Cox Model*. Springer; 2000.
- 320 40. Rizopoulos D. JM: An R Package for the Joint Modelling of Longitudinal and Time-to-Event  
321 Data. *Journal of Statistical Software*. 2010;35(9):1-33.
- 322 41. *nlme: Linear and Nonlinear Mixed Effects Model*. 2018.
- 323 42. van der Beek MT, Berger SP, Vossen AC, et al. Preemptive versus sequential prophylactic-  
324 preemptive treatment regimens for cytomegalovirus in renal transplantation: comparison of  
325 treatment failure and antiviral resistance. *Transplantation*. Feb 15 2010;89(3):320-6.  
326 doi:10.1097/TP.0b013e3181bc0301
- 327 43. Kamel M, Kadian M, Srinivas T, Taber D, Posadas Salas MA. Tacrolimus confers lower acute  
328 rejection rates and better renal allograft survival compared to cyclosporine. *World J Transplant*. Dec  
329 24 2016;6(4):697-702. doi:10.5500/wjt.v6.i4.697
- 330 44. Solis M, Velay A, Gantner P, et al. Torquetenovirus viremia for early prediction of graft  
331 rejection after kidney transplantation. *J Infect*. Jul 2019;79(1):56-60. doi:10.1016/j.jinf.2019.05.010
- 332 45. Fernandez-Ruiz M, Albert E, Gimenez E, et al. Early kinetics of Torque Teno virus DNA load  
333 and BK polyomavirus viremia after kidney transplantation. *Transpl Infect Dis*. Dec 28 2019:e13240.  
334 doi:10.1111/tid.13240
- 335 46. Maggi F, Focosi D, Statzu M, et al. Early Post-Transplant Torquetenovirus Viremia Predicts  
336 Cytomegalovirus Reactivations In Solid Organ Transplant Recipients. *Sci Rep*. Oct 19 2018;8(1):15490.  
337 doi:10.1038/s41598-018-33909-7
- 338 47. Doberer K, Schiemann M, Strassl R, et al. Torque Teno virus for risk stratification of graft  
339 rejection and infection in kidney transplant recipients - A prospective observational trial. *Am J*  
340 *Transplant*. Feb 7 2020;doi:10.1111/ajt.15810
- 341 48. Matuschek H, Kliegl R, Vasisht S, Baayen H, Bates D. Balancing Type I error and power in  
342 linear mixed models. *J Mem Lang*. Jun 2017;94:305-315. doi:10.1016/j.jml.2017.01.001
- 343 49. Barr DJ, Levy R, Scheepers C, Tily HJ. Random effects structure for confirmatory hypothesis  
344 testing: Keep it maximal. *J Mem Lang*. Apr 2013;68(3):255-278. doi:10.1016/j.jml.2012.11.001
- 345 50. Bal A, Sarkozy C, Josset L, et al. Metagenomic Next-Generation Sequencing Reveals  
346 Individual Composition and Dynamics of Anelloviruses during Autologous Stem Cell Transplant  
347 Recipient Management. *Viruses*. Nov 14 2018;10(11)doi:10.3390/v10110633

348

349



350 **Figure Legends**

351 **Figure 1: Development of BKPyV viremia, CMV viremia and allograft rejection after KTx**

352 Survival curves are shown for BKPyV viremia (A), CMV viremia (B), and allograft rejection (C) after  
353 KTx.

354

355 **Figure 2: Observed and modelled TTV loads after KTx**

356 Individual TTV DNA load measurements are depicted in blue, shown for each individual sample by  
357 the dots connected by a line. The red, orange and blue labels and lines depict the observed and TTV  
358 loads predicted by the linear mixed model of three example patients. Taking into account their  
359 individual random effects, the individual linear progression trajectories can be predicted with the  
360 formula described in Materials and Methods, the coefficient values of the fixed effects in **Table 3**,  
361 and their unique random effects:

362 Patient 1 (red): tacrolimus = yes, dialysis vintage = yes,  $\beta_0 = 1.58$ ,  $\beta_1 = 0.43$ ,  $\beta_2 = 0.03$

363 Patient 2 (yellow): tacrolimus = no, dialysis vintage = yes,  $\beta_0 = 0.18$ ,  $\beta_1 = 0.19$ ,  $\beta_2 = 0.01$

364 Patient 3 (green): tacrolimus = yes, dialysis vintage = no,  $\beta_0 = 1.35$ ,  $\beta_1 = 0.52$ ,  $\beta_2 = 0.04$

365

366

367 **Description of supporting information**

368 **Supplement 1:** Flowchart for inclusion and exclusion of kidney transplantation recipients.

369 **Supplement 2:** A detailed description of TTV detection

370 **Supplement 3:** A detailed description of the linear mixed effects model

371

372 **Table 1:** Baseline characteristics of the study population

	Total	BKPyV viremia			CMV viremia			Rejection		
		Without	With	P value	Without	With	P value	Without	With	P value
<b>Total, n(%)</b>	<b>389</b> <b>(100)</b>	<b>284</b> <b>(100)</b>	<b>105</b> <b>(100)</b>		<b>312</b> <b>(100)</b>	<b>77</b> <b>(100)</b>		<b>301</b> <b>(100)</b>	<b>88</b> <b>(100)</b>	
<i>Sex, n(%)</i>				0.44			0.87			0.68
<i>Female</i>	<b>151(39)</b>	114(40)	37(35)		120(38)	31(40)		119(40)	32(36)	
<i>Male</i>	<b>238(61)</b>	170(60)	68(65)		192(62)	46(60)		182(60)	56(64)	
<i>Mean age in years (σ)</i>	<b>50.8</b> <b>(13.6)</b>	50.1 (13.4)	52.6 (14.4)	0.13	50.7 (13.3)	51.3 (15.1)	0.77	51.2 (13.6)	49.5 (13.9)	0.31
<i>Underlying condition, n(%)</i>				0.13			0.48			0.51
<i>Inherited,</i>	<b>92(24)</b>	68(24)	24(23)		77(25)	15(19)		73(24)	19(22)	
<i>Glomerular</i>	<b>101(26)</b>	79(28)	22(21)		85(27)	16(21)		76(25)	25(28)	
<i>Vascular</i>	<b>84(22)</b>	52(18)	32(30)		65(21)	19(25)		70(23)	14(16)	
<i>Obstructive</i>	<b>31(8)</b>	24(8)	7(7)		24(8)	7(9)		23(8)	8(9)	
<i>Other</i>	<b>81(21)</b>	61(21)	20(19)		61(20)	20(26)		59(20)	22(25)	
<i>History of dialysis, n(%)</i>				0.88			0.41			0.018
<i>No</i>	<b>155(40)</b>	112(39)	43(41)		128(41)	27(35)		130(43)	25(28)	
<i>Yes</i>	<b>234(60)</b>	172(61)	62(59)		184(59)	50(65)		171(57)	63(72)	
<i>Mean duration in months (σ)</i>	<b>11.3</b> <b>(17.0)</b>	11.8 (18.5)	9.7 (12.3)	0.18	11.1 (17.4)	12.0 (15.5)	0.64	13.6 (16.0)	13.9 (20.1)	0.11
<i>Immunosuppression, n(%)</i>				0.89			<0.0001			0.007
<i>Cyclosporine</i>	<b>89(23)</b>	66(23)	23(22)		55(18)	34(44)		59(20)	30(34)	
<i>Tacrolimus</i>	<b>300(77)</b>	218(77)	82(78)		257(82)	43(56)		242(80)	58(66)	

373

374

**Table 2: CMV serostatus of donor and recipient**

CMV serostatus	Total	Before 2008		After 2008 <sup>a</sup>	
		No CMV viremia	CMV viremia	No CMV viremia	CMV viremia
	<b>389</b>	<b>59 (66%)</b>	<b>31 (34%)</b>	<b>265 (89%)</b>	<b>34 (11%)</b>
R-/D-	<b>86</b>	20 (100%)	0 (0%)	66 (100%)	0 (0%)
R+/D+	<b>155</b>	25 (64%)	14 (36%)	105 (91%)	11 (9%)
R-/D+	<b>84</b>	11 (52%)	10 (48%)	42 (67%)	21 (33%)
R+/D-	<b>64</b>	3 (30%)	7 (70%)	52 (96%)	2 (4%)

R: recipient, D: donor. <sup>a</sup>: After 2008, all except R-/D- received valganciclovir CMV prophylaxis for 90 days after transplantation.

**Table 3:** Fixed and random effects from the linear mixed effects model for estimating the mean TTV load over time ( $t$ )

Fixed Effects	$\beta$ -coefficients	95% CI		P value	Random effects	$\sigma$
$\beta_0$ <i>Intercept</i>	3.39	3.07	3.70	<0.001	$b_{i0}$ <i>Intercept</i>	0.87
$\beta_1$ $t$	1.471	1.34	1.60	<0.001	$b_{i1}$ $t$	0.52
$\beta_2$ $t^2$	-0.24	-0.27	-0.21	<0.001	$b_{i2}$ $t^2$	0.04
$\beta_3$ $t^3$	0.01	0.01	0.01	<0.001	$\varepsilon_{ij}$ <i>Residual</i>	1.43
$\beta_4$ <i>Tacrolimus vs. Cyclosporine A</i>	0.45	0.15	0.74	0.0034		
$\beta_5$ <i>History of dialysis</i>	0.36	0.10	0.60	0.0062		

**Table 4:** Estimated hazard rate for BKPyV viremia and rejection based on changes in TTV load after KTx

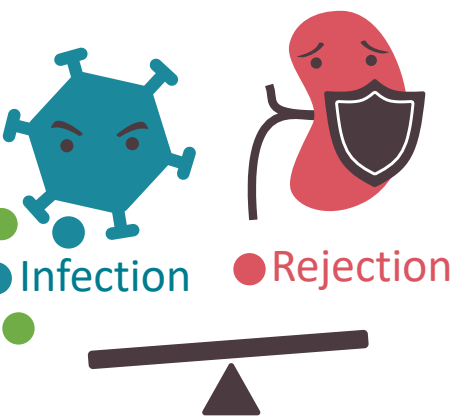
		<b>HR*</b>	<b>95% CI</b>		<b>P value</b>
<b>BKPyV viremia</b>	<i>TTV load 1 log increase</i>	1.03	1.03	1.04	<0.001
<b>CMV viremia</b>	<i>TTV load 1 log increase</i>	1.01	1.01	1.01	<0.001
<b>Rejection episode</b>	<i>TTV load 1 log increase</i>	0.74	0.71	0.76	<0.001

\* HR: hazard rate

# Torque teno virus load predicts allograft rejection but not viral infection after kidney transplantation

## The problem

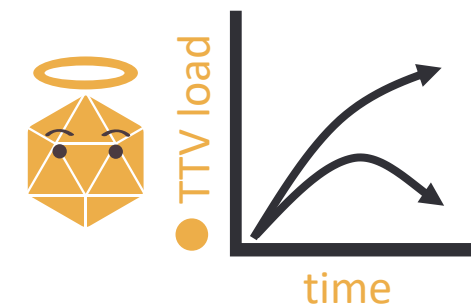
Too much immune suppression causes viral infection



Too little immune suppression causes allograft rejection

## Hypothesis

Both rejection and infection may be predicted by **TTV load kinetics**



TTV infects everyone, is non-pathogenic and its blood load is controlled by the immune system

## Method

Kidney transplantation cohort, n=389

Predictor:

- Repeated TTV ● load measurements



Endpoints:

- BKV ● and CMV ● infection
- Allograft rejection ▼

Joint modelling analysis:

- Mixed effects model
- Cox regression

## Results

With every 10-fold TTV load increase:

**The risk of allograft rejection decreased**  
HR 0.74, CI 0.71 – 0.76

The risk of BK infection and CMV infection remained the same  
HR 1.03, CI 1.03 – 1.04  
HR 1.01, CI 1.01 – 1.01

## Conclusions

TTV load could serve as a predictor of allograft rejection but not of infection

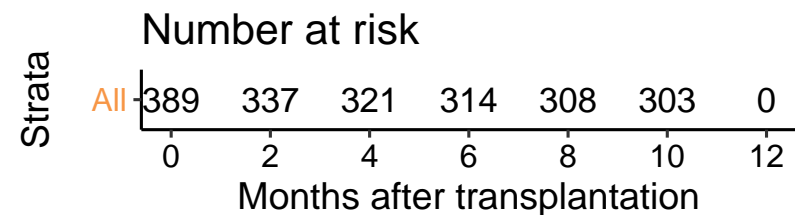
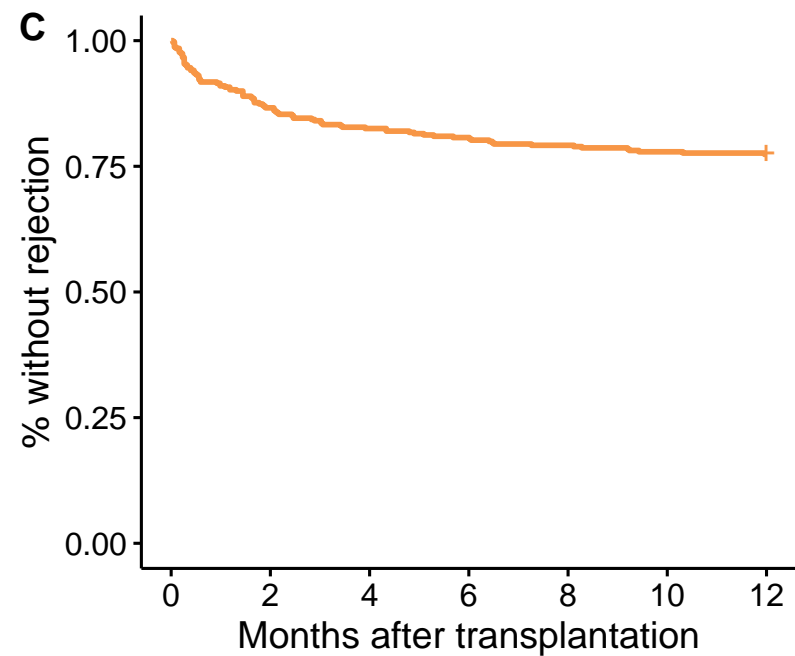
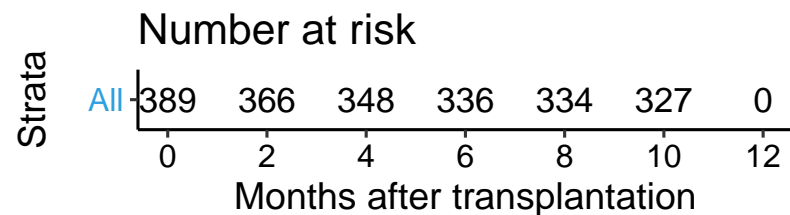
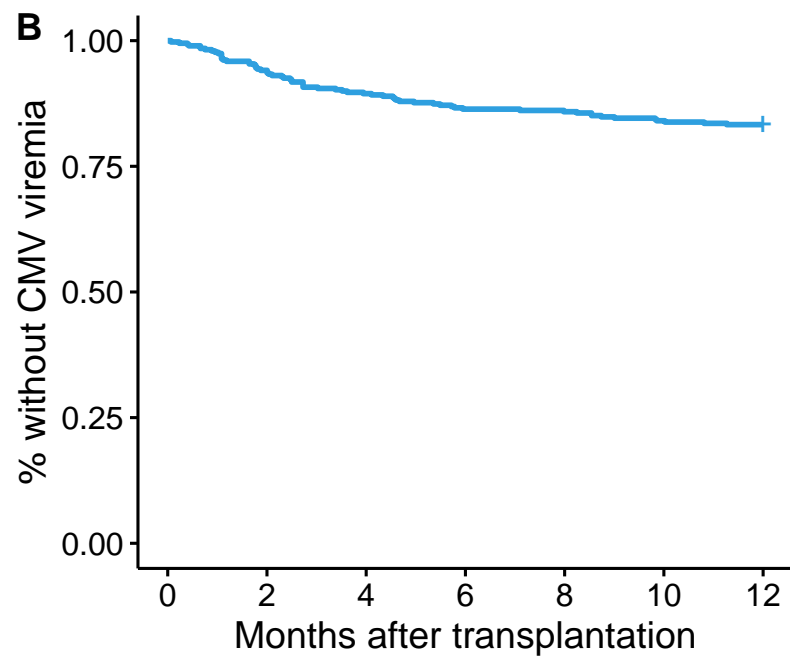
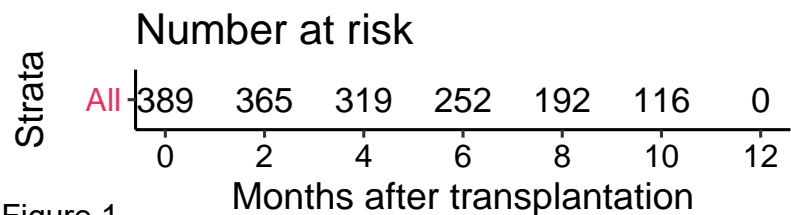
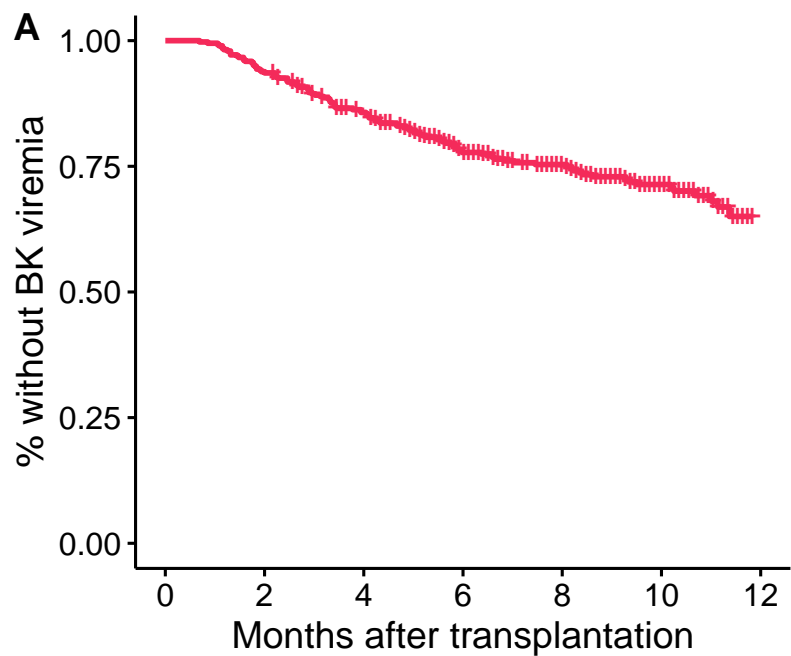


Figure 1

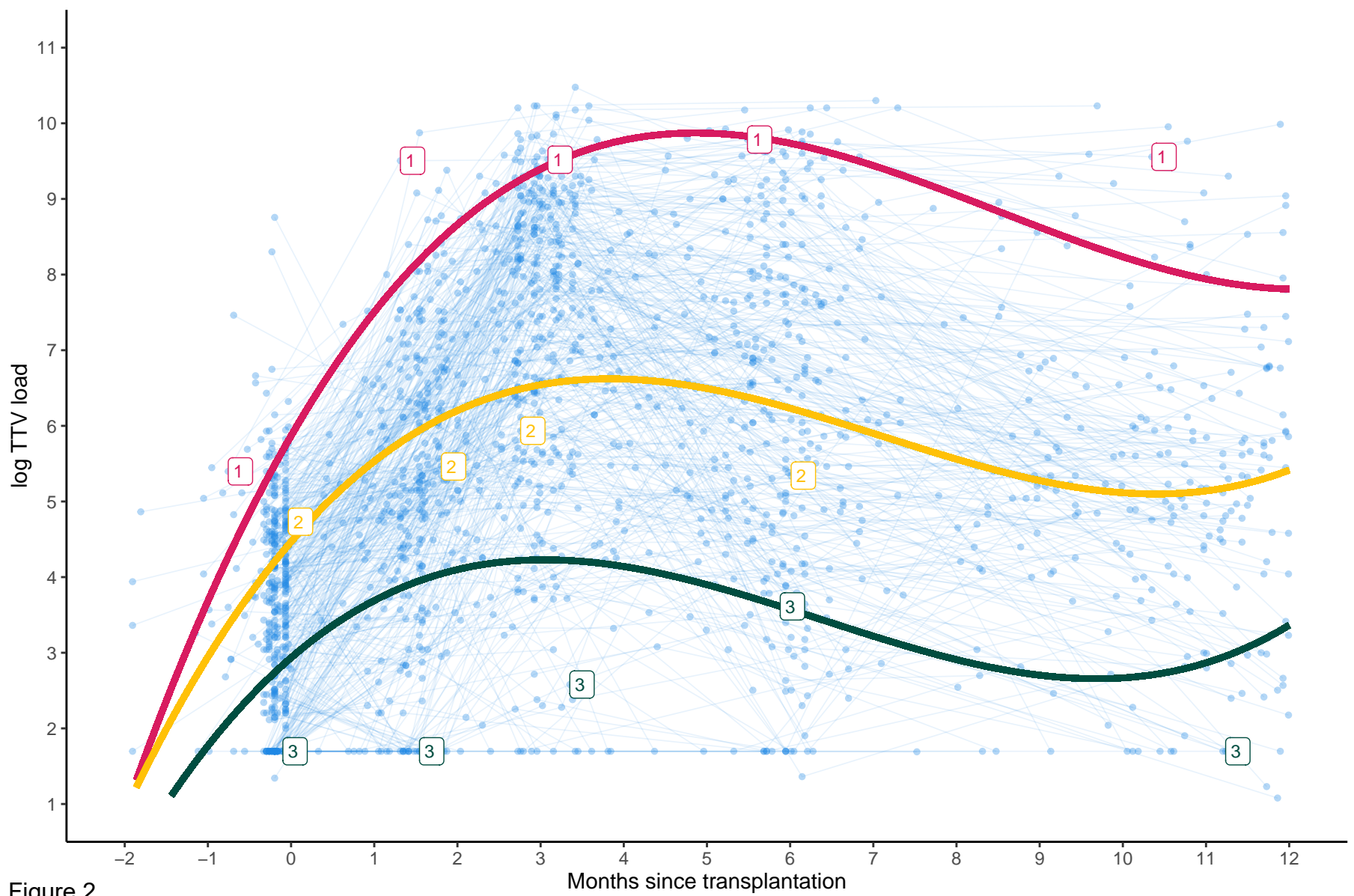


Figure 2