

Estimating the long-term effects of population-wide screening for latent and active tuberculosis in the Republic of the Marshall Islands

Romain Ragonnet, PhD ^{1,*}, Bridget M. Williams, MPH ¹, Angela Largen, MPH ², Joaquin Nasa Jr ³, Tom Jack ³, Mailyynn K Langinlur ³, Eunyong Ko, MPH ⁴, Kalpeshsinh Rahevar, MPH ⁵, Tauhid Islam, MPH ⁵, Justin Denholm, PhD ⁶, Ben J. Marais, PhD ⁷, Guy B Marks, PhD ⁸, Emma S. McBryde, PhD ⁹, James M. Trauer, PhD¹.

¹ School of Public Health and Preventive Medicine, Monash University, Melbourne VIC 3004, Australia

² Hawaii Department of Health, Tuberculosis Control Branch, Honolulu, Hawaii 96817, United States

³ Ministry of Health and Human Services, Majuro, Marshall Islands

⁴ WHO Country Liaison Office, Micronesia, Department of Health and Social Affairs, Capitol Suites, Palikir, Pohnpei, Federated States of Micronesia

⁵ World Health Organization Regional Office for the Western Pacific (WHO WPRO), UN Avenue, Manila 1000, Philippines

⁶ Victorian Tuberculosis Program, 792 Elizabeth Street, Melbourne 3000, Australia

⁷ Marie Bashir Institute for Infectious Diseases and Biosecurity, University of Sydney, Westmead NSW 2145, Australia

⁸ South Western Sydney Clinical School, University of New South Wales, Liverpool NSW 2170, Australia

⁹ Australian Institute of Tropical Health and Medicine, James Cook University, Douglas QLD 4814, Australia

*Corresponding author: Dr Romain Ragonnet, Monash School of Public Health and Preventive Medicine, 553 St Kilda Road Melbourne VIC 3004, romain.ragonnet@monash.edu, +61 3 9903 0444.

Abstract

Background: Ambitious population-based screening programs for latent and active tuberculosis (TB) were implemented in the Republic of the Marshall Islands (RMI) in 2017 and 2018.

Methods: We used a transmission dynamic model of TB informed by local data to capture the historical dynamics of the RMI epidemic. We then used the model to project the future epidemic trajectory following the active screening interventions, as well as considering a counterfactual scenario with no intervention. We also simulated future scenarios including periodic interventions similar to those previously implemented, to assess their ability to reach the End TB Strategy targets and TB pre-elimination in RMI.

Findings: The screening activities conducted in 2017 and 2018 were estimated to have reduced TB incidence and mortality by more than one third in 2020, and are predicted to achieve the End TB Strategy milestone of 50% incidence reduction by 2025 compared to 2015. Screening interventions had a considerably greater impact when latent TB screening and treatment was included, compared to active case finding alone. Such combined programs implemented at the national level could achieve TB pre-elimination around 2035 if repeated every two years, and around 2045 if repeated every five years.

Interpretation: Our model suggests that it would be possible to achieve TB pre-elimination by 2035 in RMI through periodic repetition of the same interventions as those already implemented in the country. It also highlights the importance of including latent infection testing in active screening activities.

Funding: Australian National Health and Medical Research Council and World Health Organization.

Introduction

Every year, around ten million people develop tuberculosis (TB) disease globally.¹ The causative agent of TB (*Mycobacterium tuberculosis*, *M.tb*) was first identified in 1882 – and yet more than 130 years later, TB is estimated to be the world’s leading cause of death from a single infectious agent.¹ The availability of effective vaccines and treatments has not been sufficient to eliminate TB. Consequently, disease elimination is not expected in the coming decades without dramatic changes to current approaches to public health management.

Improving case detection is a promising way to progress the global TB response because millions of diseased individuals are currently undetected.¹ We now know that ACF activities can identify significant numbers of individuals with active disease who may not have been detected otherwise or may only have been detected after substantial delays. Recent large-scale randomised trials of active case finding (ACF) interventions in high burden settings have demonstrated the efficacy of these approaches and generated great hope for dramatically improved control by reducing the pool of infectious individuals.^{2,3} Further in the past, large-scale ACF programs achieved dramatic and sustained reductions in TB burden in developed countries, such as Australia, after the Second World War.⁴

While classic ACF approaches focus on active disease only, screening and treatment of latent TB infection (LTBI) can also be included in these ambitious programs in order to prevent future TB reactivation in infected individuals. Population-wide use of preventive treatment (PT) is not a new intervention. Large-scale cluster-randomised trials of isoniazid PT were conducted in the late 1950s in Alaska, Greenland, and Tunisia, all demonstrating significant reductions of TB incidence.⁵⁻⁷ However, a more recent trial conducted in a South African mining population with high prevalence of HIV was not successful at reducing TB burden.⁸ This demonstrates that the effectiveness of mass PT programs depends on the characteristics of the population and epidemic in which the intervention is implemented,⁹ and that it is

difficult to anticipate the effects of future intervention by extrapolating observations made in other settings.

Ambitious population-level screening programs were recently completed in the Republic of the Marshall Islands (RMI), an archipelago nation in the western Pacific. RMI is a high TB burden country with an estimated TB incidence approaching 500 cases-per-100,000-persons-per-year in 2019 according to the World Health Organization (WHO).¹⁰ The screening activities were conducted in the two most populous islands of RMI – Ebeye and Majuro – together representing nearly three quarters of the national population. In 2017, a first ACF intervention aimed to screen the entire adult population (those aged 15 years or older) of Ebeye Island for active TB disease and treat those with suspected disease. The following year, an even more comprehensive intervention was conducted on Majuro Atoll to screen individuals of all ages for both latent and active TB and provided appropriate treatment for both these conditions. These programs have enabled identification and treatment of a large number of individuals with latent and active TB. It is now critical to estimate the long-term effects of these interventions and to identify effective follow-up approaches that would sustain significant reductions of TB incidence in RMI.

Mathematical modelling has the ability to predict the long-term effects of control interventions, as well as to guide future TB control by considering different hypothetical scenarios of intervention. In this modelling study, we incorporated local data collected during the interventions into a transmission dynamic model of TB in order to assess whether the End TB Strategy targets and pre-elimination could be achieved in RMI under the current strategy as well as under various future intervention scenarios.

Methods

Overall approach

We used a deterministic compartmental model to simulate *M.tb* transmission in RMI using a similar approach to previously published studies.¹¹⁻¹⁴ After calibrating the model to local data using Bayesian techniques, we projected the long-term effect of the large-scale LTBI and TB screening activities undertaken in RMI in 2017 and 2018. The projected epidemic trajectories were compared to a counterfactual scenario corresponding to the predicted epidemiological trajectory in the absence of these interventions. We then projected repeated periodic interventions similar to those previously implemented and covering the entire country every two, five or ten years, to assess prospects for reaching the End TB Strategy milestones and targets, and the pre-elimination incidence threshold (see Table 1).

Tuberculosis model

The base model consisted of six compartments that each represent a particular clinical status with regards to *M.tb* infection or disease (Figure 1). LTBI was modelled using two sequential compartments (*E* and *L*) in order to capture the declining risk of disease progression over time from infection.^{15,16} Individuals progressing to active TB (*I*) were stratified based on their form of disease: smear-positive pulmonary TB (PTB), smear-negative PTB and extrapulmonary TB. Diseased individuals may either recover spontaneously, receive treatment (*T*) or die. Recovered individuals were modelled as a separate compartment (*R*), such that differential susceptibility to future infection could be considered, as compared to the original risk of infection associated with the “susceptible” population. Reinfection was also permitted for latently infected individuals and was modelled through a flow returning from the late latent compartment to the early latent compartment, with LTBI assumed to confer partial protection against reinfection (Table 2).

The simulated population was then stratified by age according to five categories: 0-4, 5-14, 15-34, 35-49 and 50+ years old. Finally, the model was further stratified at the population level to explicitly simulate three different locations: Majuro Atoll, Ebeye Island and all other islands of RMI. We incorporated heterogeneous mixing by age and location. The impact of type 2 diabetes was accounted for by adjusting the age-specific rates of progression from latent to active disease based on age-specific diabetes prevalence estimates. Age-specific diabetes prevalence was assumed to increase progressively between 1950 and 2020 and remained constant in the future in our base case analysis. Both increasing and decreasing future diabetes prevalence were explored in sensitivity analyses. The effect of BCG vaccination was modelled by adjusting the age-specific susceptibility to infection and this adjustment varied with time to reflect the progressive scale-up of BCG coverage.

We used programmatic data to inform the simulated detection and treatment processes and previously published estimates to inform the natural history of TB,¹⁷ as well as the rates of progression from latent to active TB.¹⁶ Model parameters were fitted to local data on population size, TB prevalence, LTBI prevalence and TB notifications using an adaptive Metropolis algorithm. This calibration approach allowed consideration of the substantial uncertainty around the most critical model parameters (Table 2). In particular, various profiles of time-variant passive TB screening were considered to cover a wide range of assumptions regarding the future performance of passive case finding. The code used to implement the model is publicly available on Github

(https://github.com/monash-emu/AuTuMN/tree/master/apps/tuberculosis/regions/marshall_islands).¹⁸

Modelled interventions

When LTBI screening and treatment were implemented, latently infected individuals were assumed to transition to the recovered compartment on completion of treatment. The

transition rate associated with the preventive treatment was defined as the product of a time-variant LTBI screening rate, the sensitivity of the LTBI test and the efficacy of preventive treatment. ACF was modelled through an additional flow from the undetected disease compartment to the treatment compartment. The rate governing this transition was defined by a time-variant ACF screening rate, which was multiplied by the sensitivity of the diagnostic test used during the ACF intervention.

The time-variant functions used to characterise both the LTBI screening rate and the ACF screening rate were defined such that the modelled proportions of screened individuals at the end of the interventions were consistent with those measured in the field. In Ebeye, 85% of individuals aged 15 years old and over were screened for active TB, while in Majuro 81% of the entire population were screened for both LTBI and active TB. In order to capture the future effect of increased TB awareness due to the large-scale community interventions, we increased the rate of passive screening of active TB from 2018 - the end point of the completed intervention, considering relative improvements in the screening rate ranging from zero to 50%.

In addition to simulating the previously implemented interventions, we modelled scenarios in which the community-wide interventions would be repeated periodically at the national level, starting from 2021. We considered interventions repeated every two, five or ten years in separate scenarios and we assumed a similar proportion of the population screened to that of the intervention conducted in Majuro in 2018. Finally, we also estimated the effect of intensive contact tracing and preventive treatment provision in the contacts of individuals with active TB.

Role of the funding sources

The funders of the study had no role in the collection and analysis of data. TI and KR are employed by the WHO, one of the funders of this study, but contributed as technical experts.

They both contributed to developing the concept, interpreting the data, reviewed the manuscript and agreed to publish it.

Results

Figure 2 presents the base case model fits to local data and posterior parameter estimates are shown in the Supplement (Table S3).

Figure 3 presents the future projected epidemic trajectories with and without implementation of the active screening interventions. At the national level, we estimated that the interventions had reduced TB incidence by around 37% in 2020 from 447 (95% credible interval 353-548) to 281 (95% CrI 221-363) per-100,000-persons-per-year. TB mortality was predicted to have decreased by around 42% from 127 (95% CrI 108-160) to 74 (95% CrI 61-100) per-100,000-persons-per-year in 2020 due to the screening interventions. The community-wide interventions had a considerably greater effect on the epidemic in Majuro than in Ebeye. In Majuro, the interventions achieved an estimated 55% reduction in the local TB incidence and mortality in 2020, compared to the counterfactual no intervention scenario, with effects sustained until at least 2050 with no further intervention. In Ebeye, the estimated incidence reduction induced by the screening activities reached 43% in 2050, compared to the counterfactual no intervention scenario. If current programmatic conditions were continued with no future ACF interventions and assuming enhanced TB awareness following the interventions, we predicted that RMI could achieve the 2025 End TB incidence milestone (Figure 4). However, the country would fall short of reaching any TB mortality targets as well as the 2035 TB incidence target.

The results of our analysis considering different assumptions for the future trend of diabetes prevalence are shown in Supplementary Figure S2. This analysis included the interventions previously conducted in Majuro and Ebeye and assumed that TB control would remain similar to the current programmatic situation until 2050. If diabetes prevalence increased by 20% by 2050, the predicted TB incidence in 2050 would be 140 (95% CrI 73-245) per-100,000-persons-per-year. In contrast, a decline of 20% in diabetes prevalence was estimated

to be associated with a further decrease in TB incidence to 92 (95% CrI 51-151) per-100,000-persons-per-year in 2050.

The results of the projections considering repeated interventions at the country level every two, five or ten years are presented in Figure 4. If LTBI screening was not included in the ACF programs, we predicted that the 2035 End TB Strategy targets would not be reached, regardless of the intervention frequency considered. Combining ACF with LTBI screening and treatment would have considerably greater impacts on future TB burden. We estimated that all the End TB Strategy targets would be reached, whether this intervention was repeated every two, five or ten years. Similar results to those presented in Figure 4 are shown on a log-scale in Supplementary Figure 3, also displaying the pre-elimination threshold defined as a TB incidence rate of 1 case per-100,000-persons-per-year.¹⁹ This showed that pre-elimination could be achieved around 2035 with community-wide screening of latent and active TB repeated every two years at the country level, and around 2045 with the same intervention implemented every 5 years. The ten-year cycle was not predicted to reach pre-elimination by 2050.

Our analysis considering the use of preventive treatment provided through intensive contact tracing showed that such an intervention would yield a comparable overall effect compared to using community-wide ACF at the country level every 5 years. This intervention would not achieve any of the targets set by the End TB strategy for 2035.

Discussion

In 2017 and 2018, unprecedented TB and LTBI screening activities were conducted in RMI. These ambitious community-led interventions were supported by exceptional efforts produced by local and external stakeholders and supported by volunteers. Success has already been demonstrated through the large number of detected individuals with latent or active TB who completed treatment. Our modelling projections now suggest that these efforts will have considerable effects on the long-term trajectory of the local TB epidemics, and we estimate that periodic use of interventions such as those implemented in RMI could achieve pre-elimination goals over the coming decades.

ACF is a high-intensity, high-resource effort. Going beyond TB case-finding by adding treatment of LTBI greatly increases the cost and the time to screen a population, but our model demonstrates a considerably higher impact when both active and latent TB are addressed together. This suggests that considerable resources are likely to be required to yield the dramatic impacts on TB burden we projected. However, our analysis also shows that impacts could be sustained in the long term and that pre-elimination could be achieved through such interventions. This means that substantial returns on investment are anticipated as many TB cases and deaths will be averted over several decades. In addition to the human and societal benefits, these direct health effects also translate into economic savings because of the known catastrophic impact that TB has on the finances of individuals, families and countries.²⁰ Our results therefore highlight the importance of adopting a long-term vision when planning TB control and when funding the TB response.

Our analysis has important implications for future TB control in RMI. First, we suggest that while it is critical to address the issue of latent infection, classic approaches relying on tracing the contacts of diagnosed TB cases would be unable to achieve dramatic reductions in

burden. An explanation for this is that such strategies would not capture infections that result from old transmission events, whereas these remote infections may still contribute to the future burden of active TB through late reactivation. This suggests that population-wide screening of LTBI may be a necessary component of any program aiming to achieve TB pre-elimination in RMI. The critical importance of reducing the size of the latent infection pool had already been demonstrated by previous modelling works, which suggested that even if transmission totally ceased from 2015 onwards, this would be insufficient to achieve the End TB Strategy targets at the global level.²¹ In the present analysis, we demonstrate that these goals could be achieved by using large-scale screening interventions that are realistic, practical and utilise only existing technologies, given that such interventions have already been implemented in the field. Our study also reinforces the importance of addressing risk factors and comorbidities in addition to TB itself. In particular, we found diabetes to be a key determinant of the long-term trends of the TB epidemic in the RMI context, consistent with findings from other Pacific Island settings.¹⁴ This calls for multifactorial approaches that combine TB-specific measures with interventions addressing TB risk factors, whether these tools are medical or social. Finally, our model suggests a clear pathway to reaching TB pre-elimination in RMI. Indeed, we estimated that TB incidence could be brought below one new case-per-100,000-persons-per-year by 2035 if the ambitious intervention conducted in Majuro in 2018 could be repeated every two years from 2021 at the national level.

The strengths of our study include the fact that our calibration approach was able to capture key disease indicators accurately while incorporating uncertainty around the most fundamental parameters. Furthermore, the model was directly informed by the most relevant data possible, since these were directly measured in the field, including through the interventions themselves. This includes data on the prevalence of active and latent TB which are critical to replicate the local TB burden accurately, along with TB notification data that

ensured that the historical trends in case detection were captured appropriately. Finally, simulations were conducted using state-of-the-art computing techniques that are publicly available and have been extensively tested and documented,¹⁸ such that our model could be easily reused to assist TB control in RMI as well as in other settings.

Limitations of our study include the significant uncertainties that remain in TB epidemiology. In particular, model projections could be refined with improved knowledge about the effect of preventive therapy on the risk of future reinfection, although our model considers a broad range of assumptions regarding this parameter. Similarly, even if recent studies have produced estimates for the rates of progression from latent to active TB,^{16,22} the rate of late reactivation remains poorly characterised due to the limited data available.²³ Refining estimates of this parameter would undoubtedly increase the accuracy of predictions related to intervention involving preventive treatment. Second, while our model demonstrates the effects of two different strategies for ACF in a high-incidence area, it may not capture all impacts of coordinated TB screening efforts. More nuanced impacts to a local or national TB program could include implementation of improvements to TB diagnosis, scaling up efforts to identify close contacts, and increasing resources for LTBI identification and management among contacts and other high-risk groups. These programmatic changes are more difficult to quantify in a way that could be incorporated into a model, and could also lead to sustainable reductions in TB incidence. Third, the model allows interactions between individuals of different islands, although empiric data were not available to quantify this social mixing process. Therefore, the extent of the diffusion of the interventions effects between the different locations relies on our assumption that 95% of interpersonal contacts occur between individuals of the same geographical stratum. Finally, we stress that the projections presented in this study are intended to be primarily relevant to the RMI context and, given the

variability of TB epidemics in different settings, drawing quantitative conclusions for other settings would require dedicated analyses.

Repeating screening of LTBI within the same population may present some practical issues that are not considered in this modelling study. It can be difficult to interpret positive tests in individuals who were previously treated since LTBI tests frequently remain positive after treatment. Thus, some individuals may be treated unnecessarily if all positive tests were interpreted as evidence of current infection. Conversely, reinfection occurs, and some infections may be missed if positive tests were systematically interpreted as false positives in previously treated individuals, in which case testing would become redundant for this population. These issues suggest that repeating active screening programs every five years or every ten years may be more realistic than using two-year cycles. They also highlight the importance of developing highly accurate infection screening tools that could distinguish between previous and current infections or to identify biomarkers that could predict short-term progression risk.

In conclusion, our analysis suggests that while the End TB Strategy targets may not all be reached in RMI under the current programmatic situation, it would be possible to achieve pre-elimination in the next ten-to-twenty years through periodic repetition of the same interventions as those already implemented in the country, using a similar screening rate at the national level. If this is to occur, it is a rare example of the capability of existing tools to achieve END TB targets.

Contributions

RR, BMW, TI and JMT designed the study. AL, JNJ, TJ and MKL contributed to the collection and processing of the data used to inform the model. RR, BMW, ESM and JMT designed the mathematical model. RR and JMT implemented the code. RR conducted the experiments. All authors contributed to the interpretation of the findings. RR wrote the first version of the manuscript. All authors contributed to the final version of the manuscript.

Declaration of interests

The authors declare that there is no conflict of interest.

Acknowledgments

This work was funded by the Australian National Health and Medical Research Council (Project Grant APP1144570 and Fellowship Grant APP1142638) and the Western Pacific Regional Office of the World Health Organization. We gratefully thank Dr Richard Brostrom for his detailed description of the interventions, for providing access to data and for his advice on how to capture the local TB epidemiology accurately. We also thank the nurses, doctors and all persons involved in the implementation of the screening activities and who contributed to collecting the data used to inform this modelling study. In particular, we thank the late Dr. Kennar Briand, Herokko Neamon, Risa Bukbuk and Mareta Hauma for their contribution to this work.

References

1. WHO. Global tuberculosis report 2020. 2020.
2. Fox GJ, Nhung N V., Sy DN, et al. Household-Contact Investigation for Detection of Tuberculosis in Vietnam. *N Engl J Med.* 2018;378:221–9.
3. Marks GB, Nguyen N V., Nguyen PTB, et al. Community-wide Screening for Tuberculosis in a High-Prevalence Setting. *N Engl J Med.* 2019;381:1347–57.
4. Australian Institute of Health and Welfare. Publications -- Mortality over the twentieth century in Australia: Trends and patterns in major causes of death (AIHW). 2005.
5. Comstock GW, Ferebee SH, Hammes LM. A controlled trial of community-wide isoniazid prophylaxis in Alaska. *Am Rev Respir Dis.* 1967;95:935–43.
6. Horwitz O, Payne PG, Wilbek E. Epidemiological basis of tuberculosis eradication. 4. The isoniazid trial in Greenland. *Bull World Health Organ.* 1966;
7. Nyboe J, Farah AR, Christensen OW, Organization WH. Report on tuberculosis chemotherapy pilot project (Tunisia 9). Geneva PP - Geneva: World Health Organization;
8. Churchyard GJ, Fielding KL, Lewis JJ, et al. A Trial of Mass Isoniazid Preventive Therapy for Tuberculosis Control. *N Engl J Med.* 2014;
9. Ragonnet R, Trauer JM, McBryde ES, et al. Is IPT more effective in high-burden settings? Modelling the effect of tuberculosis incidence on IPT impact. *Int J Tuberc Lung Dis.* 2017;
10. WHO. Marshall Islands TB profile. 2020.
11. Trauer JM, Ragonnet R, Doan TN, McBryde ES. Modular programming for tuberculosis control, the “AuTuMN” platform. *BMC Infect Dis.* 2017;17:546.
12. Trauer JM, Denholm JT, Waseem S, Ragonnet R, McBryde ES. Scenario analysis for programmatic tuberculosis control in Western Province, Papua New Guinea. *Am J*

- Epidemiol.* 2016;
13. Doan TN, Varleva T, Zamfirova M, et al. Strategic investment in tuberculosis control in the Republic of Bulgaria. *Epidemiol Infect.* 2019;
 14. Ragonnet R, Underwood F, Doan T, Rafai E, Trauer J, McBryde E. Strategic planning for tuberculosis control in the Republic of Fiji. *Trop Med Infect Dis.* 2019;4.
 15. Trauer JM, Moyo N, Tay E-L, et al. Risk of Active Tuberculosis in the Five Years Following Infection . . . 15%? *Chest.* 2016;149:516–25.
 16. Ragonnet R, Trauer JM, Scott N, Meehan MT, Denholm JT, McBryde ES. Optimally capturing latency dynamics in models of tuberculosis transmission. *Epidemics.* 2017;
 17. Ragonnet R, Flegg JA, Brilleman SL, et al. Revisiting the Natural History of Pulmonary Tuberculosis: a Bayesian Estimation of Natural Recovery and Mortality rates. *Clin Infect Dis.* 2020;
 18. Trauer J, Ragonnet R, Segal M, Abayawardana M, McBryde E. AuTuMN Github repository. 2019.
 19. WHO. WHO | WHO targets elimination of TB in over 30 countries.
 20. Ahlburg DA, Initiative STB, Ministerial Conference on Tuberculosis and Sustainable Development (2000 : Amsterdam N. The Economic impacts of tuberculosis. Geneva PP - Geneva: World Health Organization; 2000. (Stop TB Initiative series).
 21. Houben RMGJ, Dodd PJ. The Global Burden of Latent Tuberculosis Infection: A Re-estimation Using Mathematical Modelling. Metcalfe JZ, editor. *PLOS Med.* 2016;13:e1002152.
 22. Menzies NA, Wolf E, Connors D, et al. Progression from latent infection to active disease in dynamic tuberculosis transmission models: a systematic review of the validity of modelling assumptions. *Lancet Infect Dis.* 2018;0.
 23. Dale K, Snow K, Menzies D, Trauer J, Denholm J. Quantifying the rates of late

- reactivation tuberculosis: A systematic review. *Lancet Infect Dis*.
24. WHO. WHO | WHO End TB Strategy.
 25. International Diabetes Federation. Marshall Islands country report 2010 — 2045. IDF Diabetes Atlas - 9th Edition. 2019.
 26. Behr MA, Warren SA, Salamon H, et al. Transmission of Mycobacterium tuberculosis from patients smear-negative for acid-fast bacilli. *Lancet*. 1999;353:444–9.
 27. Tostmann A, Kik S V, Kalisvaart NA, et al. Tuberculosis transmission by patients with smear-negative pulmonary tuberculosis in a large cohort in the Netherlands. *Clin Infect Dis*. 2008;47:1135–42.
 28. Donald PR. Childhood tuberculosis: the hidden epidemic. *Int J Tuberc Lung Dis*. 2004;8:627–9.
 29. Marais BJ, Hesselning AC, Gie RP, Schaaf HS, Beyers N. The burden of childhood tuberculosis and the accuracy of community-based surveillance data. *Int J Tuberc Lung Dis*. 2006;10:259–63.
 30. Jeon CY, Murray MB. Diabetes mellitus increases the risk of active tuberculosis: A systematic review of 13 observational studies. *PLoS Med*. 2008;5:1091–101.
 31. Tiemersma EW, van der Werf MJ, Borgdorff MW, Williams BG, Nagelkerke NJ. Natural history of tuberculosis: duration and fatality of untreated pulmonary tuberculosis in HIV negative patients: a systematic review. *PLoS One*. 2011/04/13. 2011;6:e17601.
 32. Andrews JR, Noubary F, Walensky RP, Cerda R, Losina E, Horsburgh CR. Risk of progression to active tuberculosis following reinfection with Mycobacterium tuberculosis. *Clin Infect Dis*. 2012;54:784–91.
 33. Nguipdop-Djomo P, Heldal E, Rodrigues LC, Abubakar I, Mangtani P. Duration of BCG protection against tuberculosis and change in effectiveness with time since

vaccination in Norway: a retrospective population-based cohort study. *Lancet Infect Dis.* 2016;16:219–26.

34. Abubakar I, Pimpin L, Ariti C, et al. Systematic review and meta-analysis of the current evidence on the duration of protection by bacillus Calmette-Guerin vaccination against tuberculosis. *Heal Technol Assess.* 2013;17:1–372, v–vi.

Figure captions

Figure 1. Illustration of the model structure

Boxes represent the different compartments types: susceptible (S), early latent (E), late latent (L), infectious (I), on treatment (T) and recovered (R). The subscripts indicate whether compartments are stratified by age (a), geography (g) and form of TB (f). Blue and orange arrows represent progression flows and transmission flows respectively. The flows associated with the modelled interventions are shown in purple.

Figure 2. Comparison between model outputs and local data for the calibration targets

The black dots represent local empiric data. The model predictions are represented in blue as median (solid line), interquartile range (dark shade) and 95% central credible interval (light blue shade). The effect of the 2017-2018 interventions was included in these projections.

Figure 3. Projected effect of the active screening interventions implemented in 2017 and 2018

The solid lines represent the median estimates. The shaded areas show the interquartile ranges (dark shade) and 95% credible intervals (light shade) projected in the absence of any intervention (pink) and under a scenario including the interventions implemented in 2017-2018 in Majuro and Ebeye (blue).

Figure 4. Projected effect of periodic community-wide interventions and contact-tracing-based preventive treatment

The solid lines represent the median estimates and the shaded areas show the interquartile credible ranges. The “status-quo” scenario is represented in blue in all panels. The left column of panels presents scenarios including nationwide active case finding (ACF) repeated

every two years (purple) or every five years (orange) or every ten years (green). The central column of panels presents scenarios including nation-wide ACF combined with mass latent infection screening and treatment, repeated every two years (purple) or five years (red). The right column of panels shows a hypothetical scenario where all contacts of TB patients would be screened for latent infection and treated if they had a positive test (beige). The light and dark grey dots show the 2025 milestones and the 2035 targets, respectively, according to the End TB Strategy.

Tables

Target or milestone	Definition
<i>TB incidence</i>	
2025 milestone ²⁴	50% reduction between 2015 and 2025
2035 target ²⁴	90% reduction between 2015 and 2035
Pre-elimination threshold ¹⁹	TB incidence below 1 case per-100,000-per-year
<i>TB mortality</i>	
2025 milestone ²⁴	75% reduction between 2015 and 2025
2035 target ²⁴	95% reduction between 2015 and 2035

Table 1. End TB Strategy targets and milestones and pre-elimination threshold

Parameter	Value or uncertainty range	Source
<i>Population characteristics</i>		
Targeted total population size (2011, all RMI)	53,158	2011 National Census
Population size at the start of simulation (1800)	200 - 1000	Fitted
Population proportions in Majuro, Ebeye and other islands (2011)	52% / 20% / 28%	2011 National Census
Proportion of contacts that occur with individuals from the same geographic group	95%	Assumption. Remainder of contacts distributed evenly between the two other locations (2.5% each)
Crude birth rate	Time-variant	United Nations Population Division data for the Federated States of Micronesia
All-cause mortality rate	Age-specific and time-variant	United Nations Population Division
Type 2 Diabetes prevalence	Age-specific and time-variant	Assumed diabetes proportions in 2020 based on the age-adjusted prevalence reported by the IDF Diabetes Atlas: ²⁵
		0-4: 1%
		5-14: 5%
		15-34: 20%
		35-49: 40%
		50+: 70%
<i>M.tb infection and TB disease</i>		
Transmission scaling factor	0.2 - 1	Fitted
Relative infectiousness (smear-positive / smear-negative / extrapulmonary TB)	1 / 0.25 / 0	26,27
Relative infectiousness by age	Progressive increase through childhood (Supplement)	28,29
Relative infectiousness during treatment (ref. untreated TB)	0.08	Based on the assumption that patients are infectious for the first two weeks of a 6-month regimen
Rate of stabilisation from early to late latency (age 0-4 / 5-14 / 15+)	4.4 / 4.4 / 2 per year	16
Rate of rapid progression to active TB (age 0-4 / 5-14 / 15+)	2.4 / 2 / 0.1 per year	16
Rate of late reactivation (age 0-4 / 5-14 / 15+)	$7e^{-9}$ / $2.3e^{-3}$ / $1.2e^{-3}$ per year	16
Uncertainty multiplier for the rates of TB progression	0.5 - 2	Fitted ¹⁶
Relative risk of TB progression for individuals with type-2 diabetes	2 - 5	30
Proportion of PTB among incident TB	85%	Adjusted to replicate observed prevalence proportions by form of TB
Proportion of smear-positive TB among	75%	Adjusted to replicate observed prevalence proportions

incident PTB		by form of TB
Rate of self recovery (smear-positive TB / other forms of TB)	0.18 - 0.29 / 0.07 - 0.21 per year	17
Rate of TB-specific mortality (smear-positive TB / other forms of TB)	0.34 - 0.45 / 0.017 - 0.035 per year	17,31
Relative risk of reinfection while latently infected (ref. infection-naive)	0.2 - 0.5	32
Relative risk of reinfection after recovery (ref. infection-naive)	0.2 - 1.0	32
<i>TB control</i>		
BCG vaccination coverage	Time-variant	Global Health Observatory data repository (WHO)
Reduced susceptibility to infection due to BCG vaccination	Age-specific	33,34
Passive TB screening rate	Varies with time and location	Fitted (see supplement)
TB screening sensitivity (smear-positive / smear-negative / extrapulmonary TB)	100% / 70% / 50%	Assumption*
Treatment success rate	Time-variant	WHO
Proportion of death among non-successful treatment	20%	WHO
Average treatment duration	6 months	Assumption
Active case finding rate	Varies with time, location and scenario	-
LTBI screening rate	Varies with time, location and scenario	-
Preventive treatment efficacy (intention-to-treat)	75 - 85%	Based on completion rate during intervention
Relative improvement in passive screening rate following interventions	0 - 50%	Assumption based on discussions with the national program

Table 2. Model parameters

The ranges presented for the fitted parameters correspond to the ranges used to inform the prior distributions in the adaptive Metropolis algorithm. The values of the parameters that are time-variant and/or age-specific are presented in the Supplement. *These parameters are multiplied by the fitted screening rate parameter, such that their absolute values are less significant than the relative values between the different forms of TB.

Figure 1

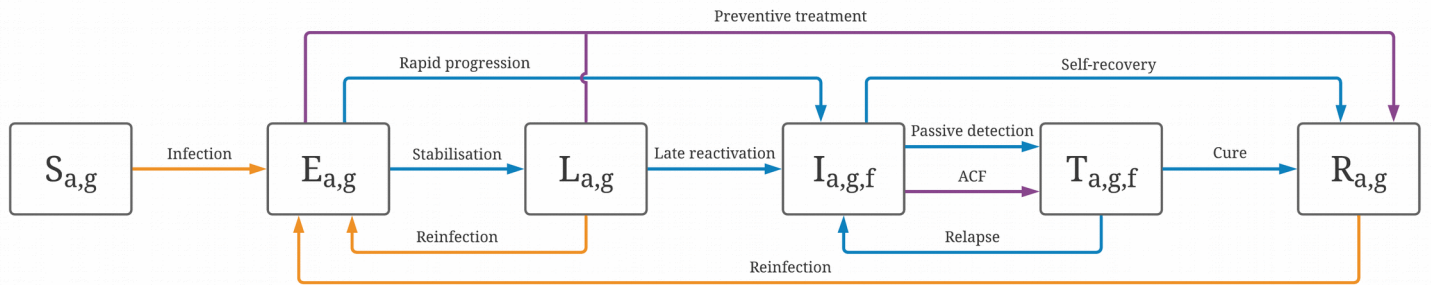


Figure 2

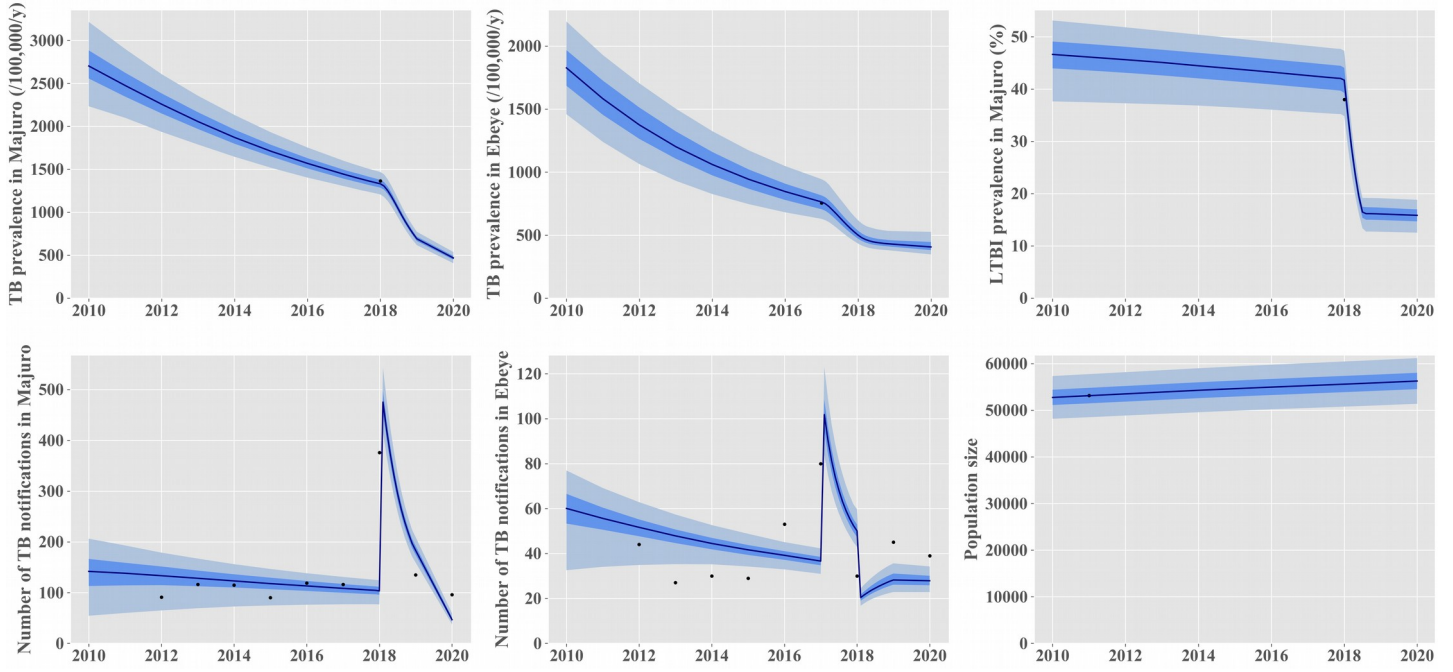


Figure 3

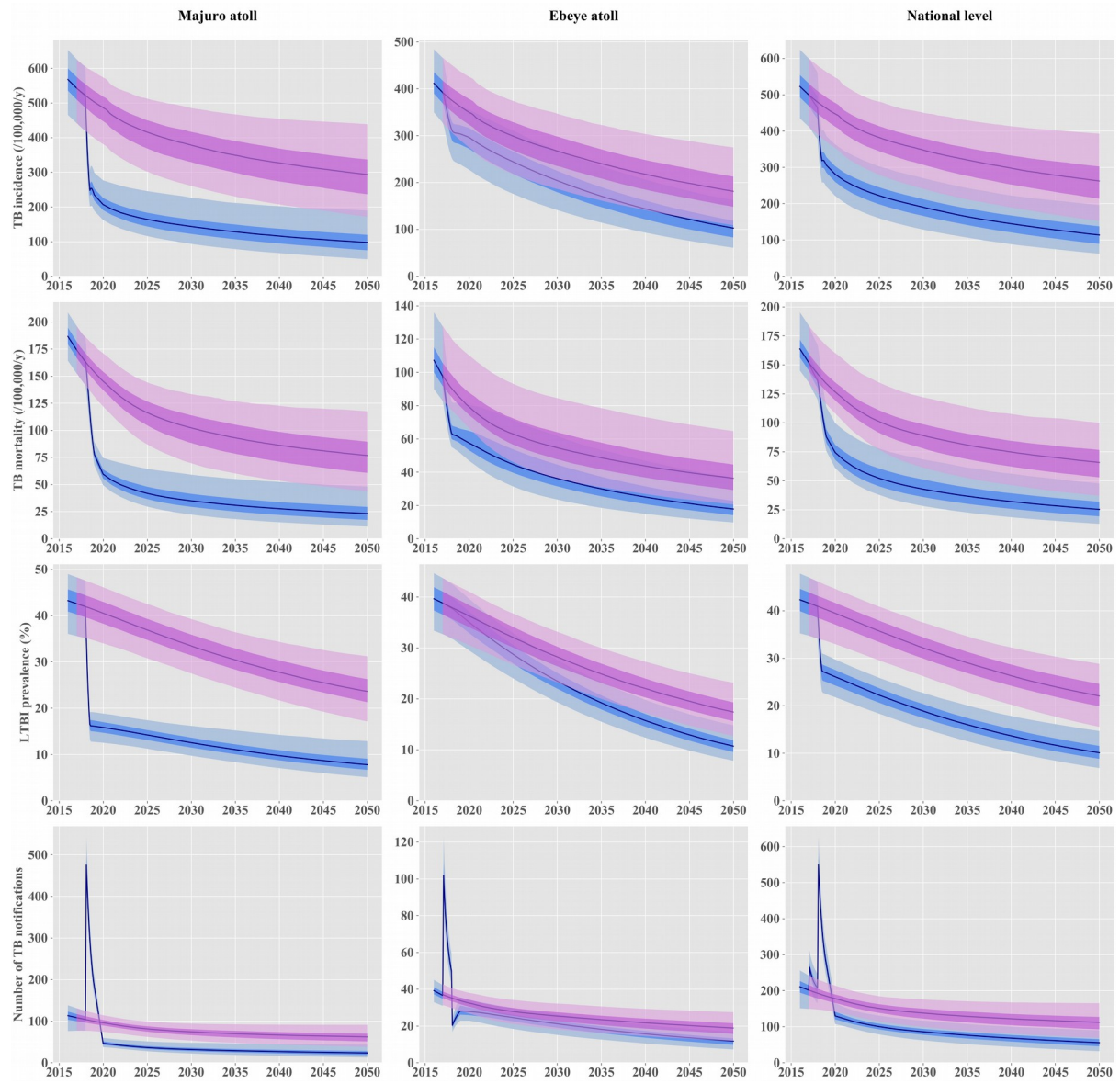


Figure 4

