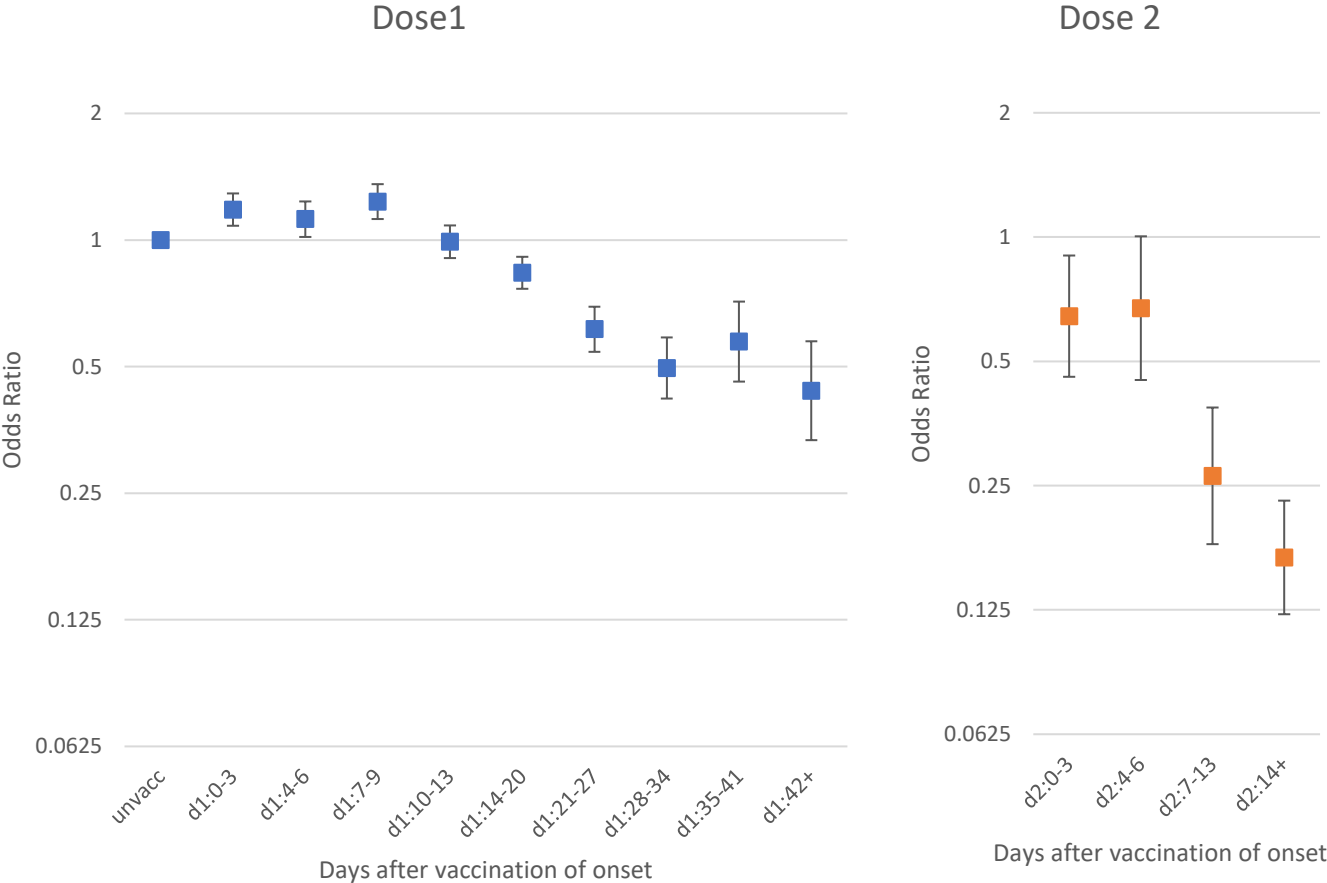
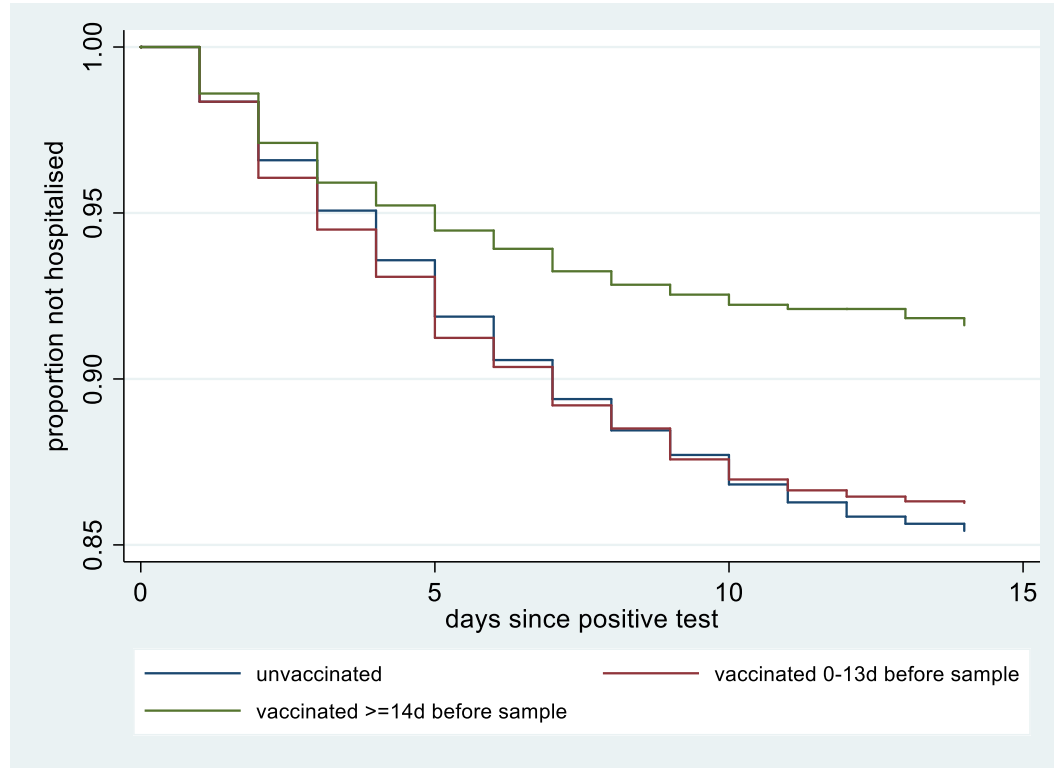


Supplementary fig 1: Adjusted odds ratios for confirmed case by interval after vaccination for BNT162b2, age ≥ 70 years since 8th December

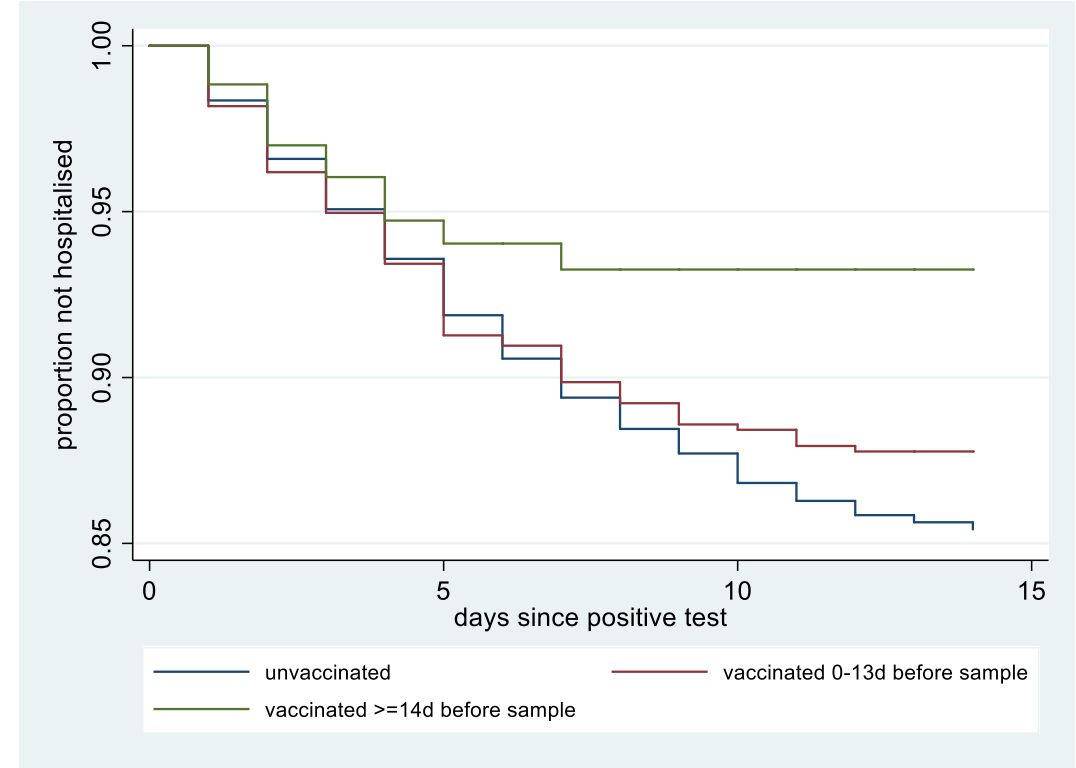


Supplementary fig 2: Kaplan-Meier curves for hospitalisations by vaccination status for BNT162b2 and ChAdOx1

(a) BNT162b2

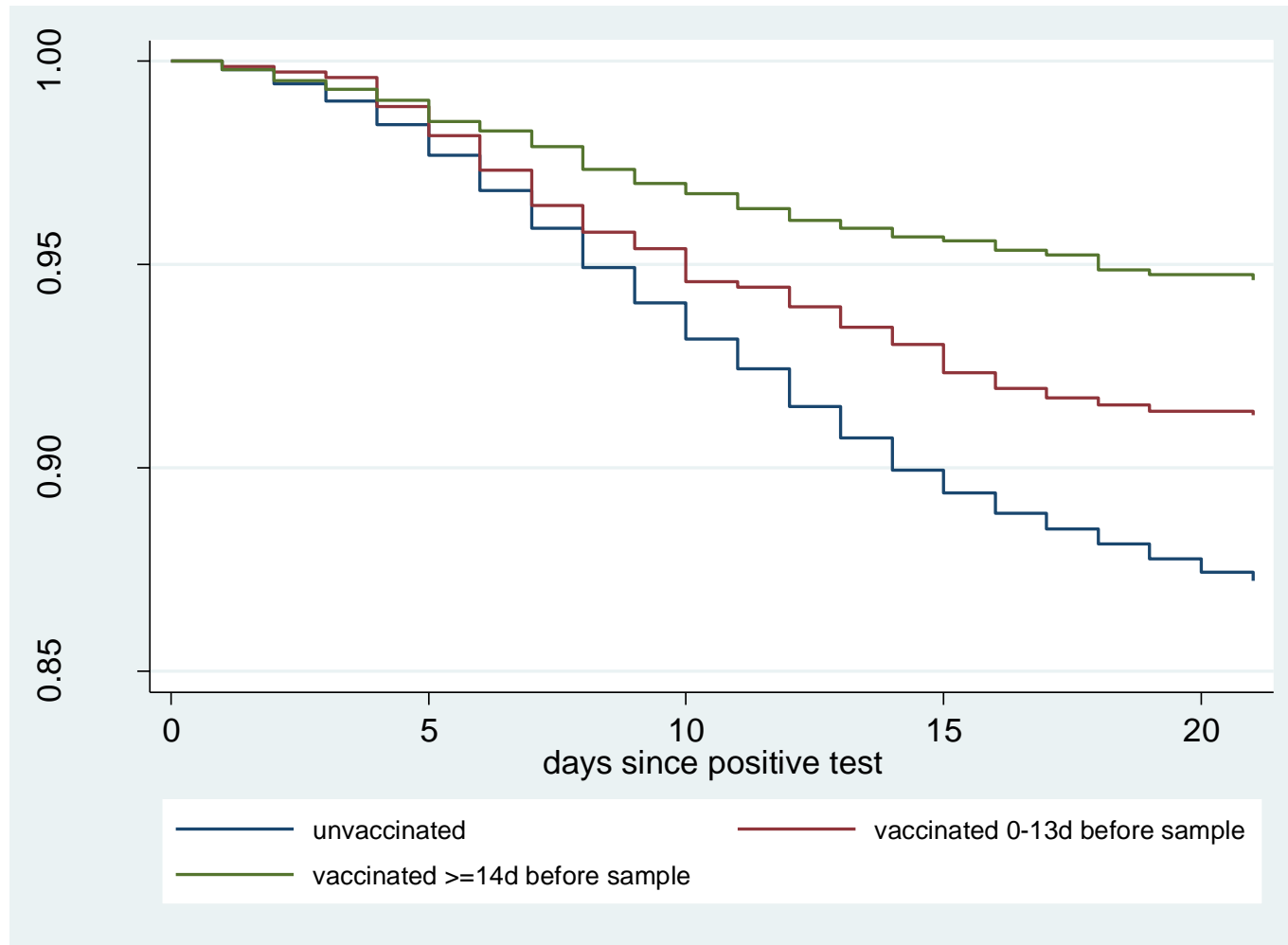


(b) ChAdOx1



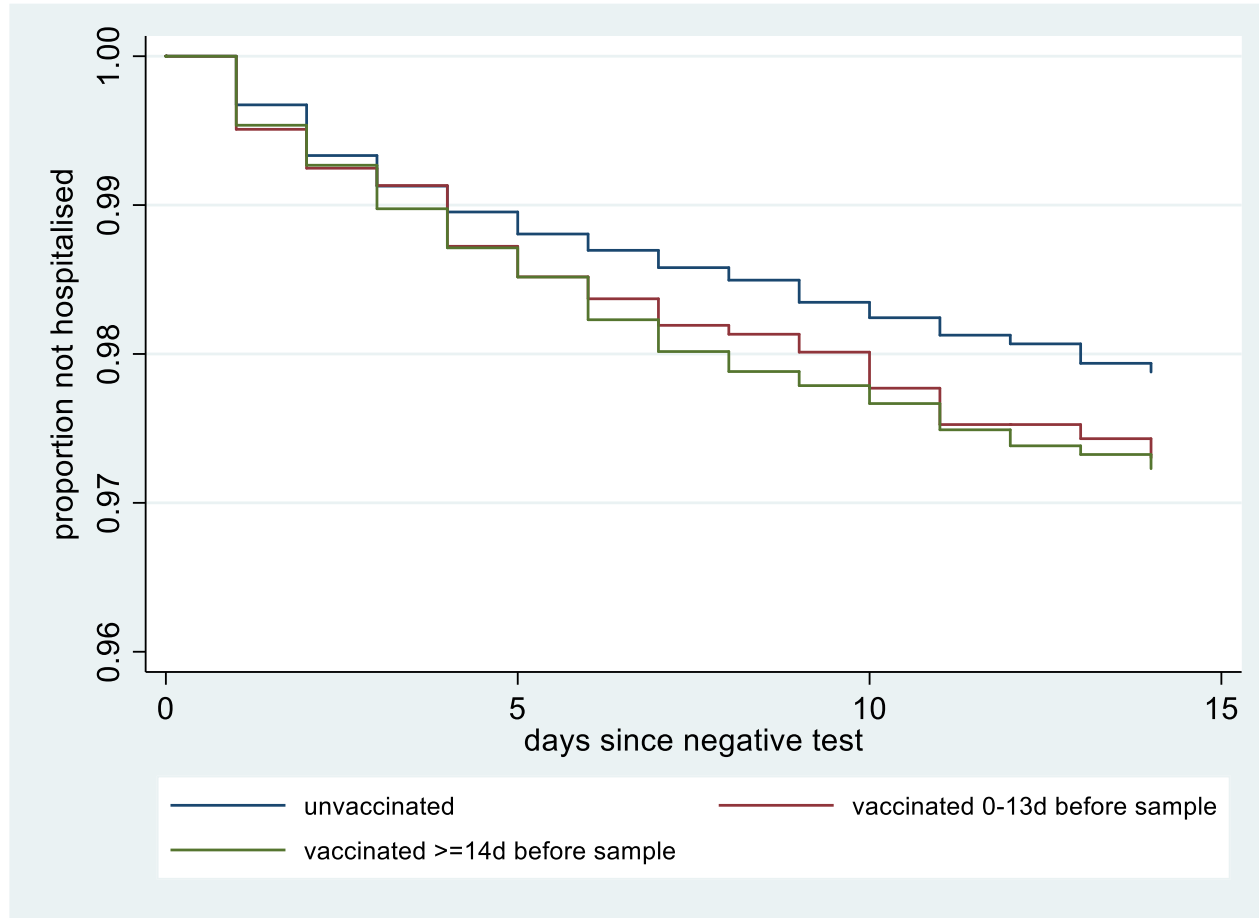
- (a) BNT162b2 Adjusting for age, care home, period and gender the hazard ratios compared to unvaccinated were 0.98 (95% CI 0.86-1.11) for days 0-13 and 0.56 (0.47-0.67) for days 14+.
- (b) ChAdOx1 Adjusting for age, care home, period and gender the hazard ratios compared to unvaccinated were 0.97 (95% CI 0.76-1.23) for days 0-13 and 0.58 (0.36-0.94) for days 14+.

Supplementary fig 3: Kaplan-Meier curves for deaths by vaccination status for BNT162b2



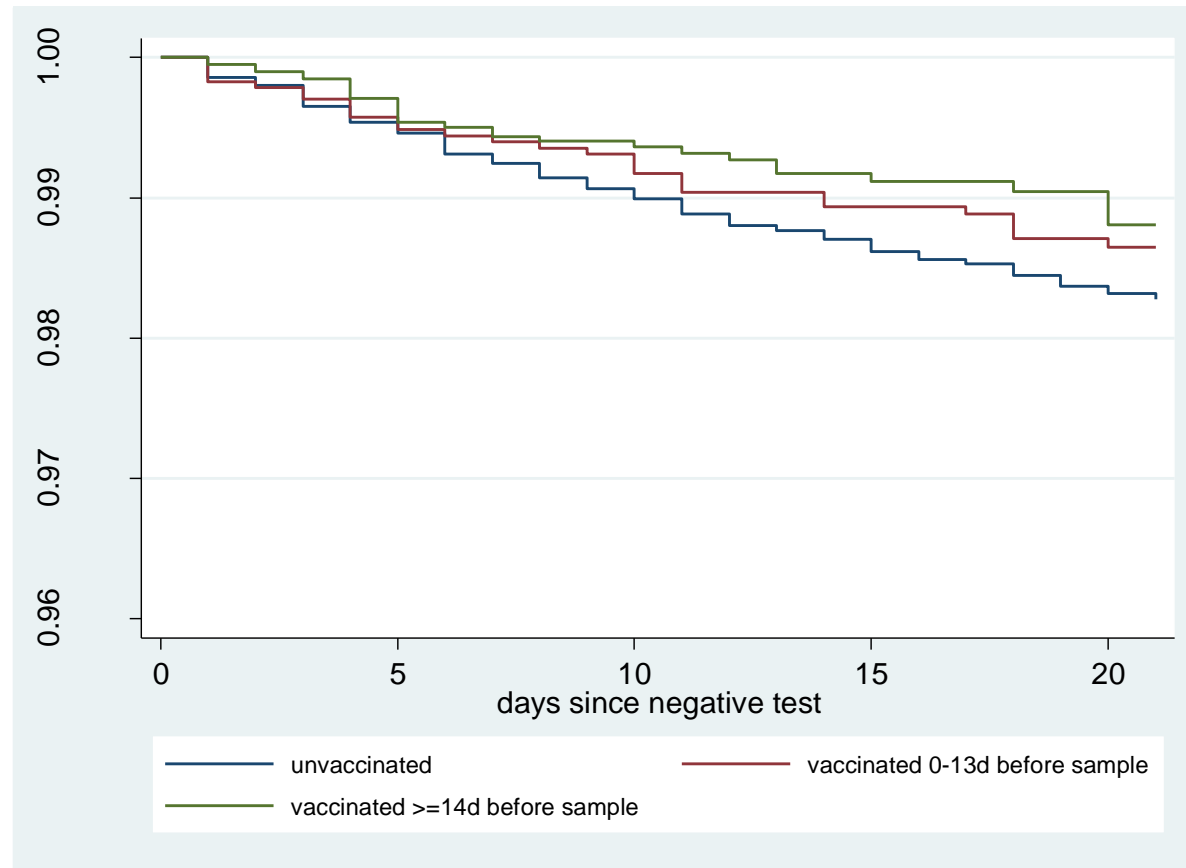
Adjusting for age, care home, period and gender the hazard ratios compared to unvaccinated were 0.74 (95% CI 0.62-0.90) for days 0-13 and 0.49 (0.38-0.63) for days 14+.

Supplementary fig 4: control analysis - Kaplan-Meier curves for hospitalisation among test negatives



Adjusting for age, care home, period and gender the hazard ratios compared to unvaccinated were 1.24 (95% CI 0.98-1.56) for days 0-13 and 1.12 (0.89-1.41) for days 14+.

Supplementary fig 5: control analysis - Kaplan-Meier curves for deaths among test negatives BNT162b2



The Hazard ratios are 0.92 (0.62-1.35) and 0.81 (0.54-1.21) for intervals of 0-13 and 14+ from dose 1.

Supplementary fig 6 completeness of vaccination data by days after vaccination

