

1 ***Electrocardiographic Manifestations of Immune Checkpoint Inhibitor Myocarditis***

2 John R Power<sup>1</sup>, Joachim Alexandre<sup>2</sup>, Arrush Choudhary<sup>1</sup>, Benay Ozbay<sup>3</sup>, Salim Hayek<sup>4</sup>, Aarti  
3 Asnani<sup>5</sup>, Yuichi Tamura<sup>6</sup>, Mandar Aras<sup>7</sup>, Jennifer Cautela<sup>8</sup>, Franck Thuny<sup>8</sup>, Lauren Gilstrap<sup>9</sup>,  
4 Dimitri Arangalage<sup>10</sup>, International ICI-myocarditis registry, Steven Ewer<sup>11</sup>, Shi Huang<sup>1</sup>, Anita  
5 Deswal<sup>12</sup>, Nicolas L. Palaskas<sup>12</sup>, Daniel Finke<sup>13</sup>, Lorenz Lehman<sup>13</sup>, Stephane Ederhy<sup>14</sup>, Javid  
6 Moslehi<sup>1#</sup>, Joe-Elie Salem<sup>14#</sup>

---

1 Vanderbilt Univ Medical Ctr, Nashville, TN  
2 Univ Caen Normandie, Caen, France  
3 Basaksehir Cam and Sakura State Hospital, Istanbul, Turkey  
4 Univ of Michigan, Ann Arbor, MI  
5 Beth Israel Deaconess Medical Center, Boston, MA  
6 Intl Univ of Health and Welfare Mita Hosp, Tokyo, Japan  
7 Univ of California San Francisco, San Francisco, CA  
8 APHM- Hôpital Nord, Marseille, France  
9 Dartmouth Hitchcock Medical Ctr, Lebanon, NH  
10 Hôpital Bichat, Paris, France  
11 Univ of Wisconsin Hosp, Madison, WI  
12 UT MD Anderson Cancer Ctr, Houston, TX  
13 Univ of Heidelberg, Heidelberg)  
14 APHP.Sorbonne Université, Paris, France

7

8 **Collaborators (International ICI-myocarditis registry):**

9 Baptiste Abbar<sup>14</sup>, Yves Allenbach<sup>14</sup>, Tariq U Azam<sup>4</sup>, Alan Baik<sup>7</sup>, Lauren A Baldassarre<sup>15</sup>,  
10 Barouyr Baroudjian<sup>16</sup>, Penelope Blakley<sup>4</sup>, Sergey Brodsky<sup>17</sup>, Johnny Chahine<sup>18</sup>, Wei-Ting  
11 Chan<sup>19</sup>, Amy Copeland<sup>20</sup>, Shanthini M Crusz<sup>21</sup>, Grace Dy<sup>22</sup>, Charlotte Fenioux<sup>14</sup>, Kambiz  
12 Ghafourian<sup>23</sup>, Arjun K Ghosh<sup>21</sup>, Valérie Gounant<sup>10</sup>, Avirup Guha<sup>17,24</sup>, Manhal Habib<sup>25</sup>, Osnat  
13 Itzhaki Ben Zadok<sup>26</sup>, Lily Koo Lin<sup>27</sup>, Michal Laufer-Perl<sup>28</sup>, Carrie Lenneman<sup>29</sup>, Darryl Leong<sup>30</sup>,  
14 Matthew Martini<sup>11</sup>, Tyler Meheghan<sup>5</sup>, Elvire Mervoyer<sup>31</sup>, Cecilia Monge<sup>32</sup>, Ryota Morimoto<sup>33</sup>,  
15 Ana Narezkina<sup>34</sup>, Martin Nicol<sup>35</sup>, Joseph Nowatzke<sup>1</sup>, Olusola Ayodeji Orimoloye<sup>1</sup>, Milan Patel<sup>15</sup>,  
16 Daniel Perry<sup>4</sup>, Nicolas Piriou<sup>36</sup>, Lawrence Piro<sup>37</sup>, Tyler Moran<sup>38</sup>, Ben Stringer<sup>39</sup>, Kazuko Tajiri<sup>40</sup>,  
17 Pankit Vachhani<sup>29</sup>, Ellen Warner<sup>41</sup>, Marie-Claire Zimmer<sup>42</sup>

---

15 Yale Univ School of Medicine; New Haven; CT  
16 Hôpital Saint-Louis, Paris, France  
17 Ohio State Univ; Columbus; OH  
18 Cleveland Clinic; Cleveland; OH  
19 Chi-Mei Medical Center; Tainan ; Taiwan  
20 National Institute of Health; Bethesda; MD  
21 Barts Health NHS Trust; United Kingdom  
22 Roswell Park Cancer Center; Buffalo; NY  
23 Northwestern Univ; Chicago; NY  
24 Case Western Reserve University, Cleveland, OH  
25 Rambam Medical Center; Haifa; Israel  
26 Rabin Medical Center; Petah Tikva; Israel  
27 UC Davis Medical Center; Sacramento; CA  
28 Tel Aviv Sourasky Medical Center; Tel Aviv; Israel  
29 Univ of Alabama; Birmingham; AL  
30 McMaster University; Canada  
31 Institut de Cancérologie de l'Ouest; France  
32 National Cancer Institute, Bethesda; MD  
33 Nagoya Univ; Japan  
# Equal Contribution  
34 UC San Diego Health; San Diego; CA  
35 Hôpital Lariboisière; France  
36 Nantes University Hospital; France  
37 Cedars-Sinai Medical Center; Los Angeles; CA  
38 Baylor College of Medicine; Houston; TX  
39 Hartford Hospital; Hartford; CT  
40 University of Tsukuba; Japan  
41 Sunnybrook Health Sciences Center; Canada  
42 Institut Bergonié; France

18 **Contact Information:** Javid Moslehi, M.D. Cardio-Oncology Program, Vanderbilt University  
19 Medical Center, 2220 Pierce Avenue, Nashville, TN 37232, Phone: 615-343-9436; Fax: 615-  
20 936-1872; Email: [javid.moslehi@vumc.org](mailto:javid.moslehi@vumc.org) or Joe-Elie Salem, M.D., Ph.D, Centre  
21 d'Investigation Clinique Paris-Est, Hôpital Pitié-Salpêtrière, Bâtiment Antonin Gosset, 47-83 Bld  
22 de l'hôpital, 75013 Paris, France. Secretariat: +33 1 42 17 85 31, Fax: +33 1 42 17 85 32; Email:  
23 [joe-elie.salem@aphp.fr](mailto:joe-elie.salem@aphp.fr).

24  
25 **Word counts (Text; abstract):** 2998/3000; 334/350

26 **(2 Figures + 3 Tables)/(5 Tables and/or Figures), 4 Supplemental Figures, 6 Supplemental**  
27 **Tables, 2 Supplemental Data Methods Sections)**

28 **Disclosures:** JES have participated to BMS ad-boards and consultancy for AstraZeneca. JM has  
29 served on advisory boards for Bristol Myers Squibb, Takeda, Regeneron, Audentes, Deciphera,  
30 Ipsen, Janssen, ImmunoCore, Boston Biomedical, Amgen, Myovant, Triple Gene/Precigen,  
31 Cytokinetics and AstraZeneca and supported by NIH grants (R01HL141466, R01HL155990,  
32 R01HL156021). LHL has served on the advisory board for Daiichi Sankyo, Senaca, and Servier,  
33 as an external expert for Astra Zeneca and received speakers' honoraria from Novartis and  
34 MSD. SMC has received consultancy from GSK, speaker bureau from BMS, and travel grant  
35 from Tesaro.

36 **NCT:** NCT04294771

37 **Keywords:** Myocarditis, cardio-oncology, immunotherapy, electrophysiology

38

39 **Key Points**

40 (90/100 words)

41 **Question:** What are the electrocardiographic manifestations of immune checkpoint inhibitor

42 (ICI)-associated myocarditis? How do they compare to acute cellular rejection (ACR), which is

43 resembling pathophysiologically to ICI-myocarditis? Which electrocardiographic features are

44 associated with adverse outcomes?

45 **Findings:** ICI-myocarditis results in more frequent ventricular arrhythmias and high-degree

46 atrioventricular blocks compared to ACR. Prolonged QRS intervals, decreased voltage,

47 conduction disorders, and pathological Q-waves are predictors of adverse outcomes in ICI-

48 associated myocarditis.

49 **Meaning:** ICI-associated myocarditis is a highly arrhythmogenic cardiomyopathy. Ventricular

50 arrhythmias, conduction disorders, low-voltage, and pathological Q-waves are associated with a

51 poor prognosis.

52 **Abstract (334/350 words)**

53 **Importance:** Immune-checkpoint inhibitor (ICI)-myocarditis often presents with arrhythmias,  
54 but electrocardiographic (ECG) findings have not been well described. ICI-myocarditis and acute  
55 cellular rejection (ACR) following cardiac transplantation share similarities on histopathology;  
56 however, whether they differ in arrhythmogenicity is unclear.

57 **Objectives:** To describe ECG findings in ICI-myocarditis, compare them to ACR, and evaluate  
58 their prognostic significance.

59 **Design:** Cases of ICI-myocarditis were retrospectively identified through a multicenter network.  
60 Grade 2R or 3R ACR was retrospectively identified within one center. Two blinded cardiologists  
61 interpreted ECGs.

62 **Setting:** 49 medical centers spanning 11 countries.

63 **Participants:** 147 adults with ICI-myocarditis, 50 adults with ACR.

64 **Exposure:** Myocarditis after ICI exposure per European Society of Cardiology criteria for  
65 clinically suspected myocarditis, grade 2R or 3R ACR per the International Society for Heart and  
66 Lung Transplantation working formulation for biopsy diagnosis of rejection.

67 **Outcomes:** All-cause mortality, myocarditis-related mortality; and composite endpoint (defined  
68 as myocarditis-related mortality and life-threatening ventricular arrhythmia).

69 **Results:** Of 147 patients, the median age was 67 years (58-77) with 92 (62.6%) men. At 30 days,  
70 ICI-myocarditis had an all-cause mortality of 39/146(26.7%), myocarditis-related mortality of  
71 24/146(16.4%), and composite endpoint of 37/146(25.3%). All-cause mortality was more  
72 common in patients who developed complete heart block (12/25[48%] vs 27/121[22.3%], hazard  
73 ratio (HR)=2.62, 95% confidence interval [1.33-5.18],p=0.01) or life-threatening ventricular

74 arrhythmias (12/22[55%] vs 27/124[21.8%], HR=3.10 [1.57-6.12],p=0.001) within 30 days after  
75 presentation. Compared to ACR, patients with ICI-myocarditis were more likely to experience  
76 life-threatening ventricular arrhythmias (22/147 [16.3%] vs 1/50 [2%];p=0.01) or third-degree  
77 heart block (25/147 [17.0%] vs 0/50 [0%];p=0.002). In ICI-myocarditis, overall mortality,  
78 myocarditis-related mortality, and composite outcome adjusted for age and sex were associated  
79 with pathological Q-waves on presenting ECG (hazard ratio by subdistribution model  
80 [HR(sh)]=5.98[2.8-12.79],p<.001; 3.40[1.38-8.33],p=0.008; 2.20[0.95-5.12],p=0.07;  
81 respectively) but inversely associated with Sokolow-Lyon Index (HR(sh)/mV=0.57[0.34-  
82 0.94],p=0.03; HR(sh)=0.54[0.30-0.97],p=0.04; 0.50[0.30-0.85],p=0.01; respectively). The  
83 composite outcome was also associated with conduction disorders on presenting ECG  
84 (HR(sh)=3.27[1.29-8.34],p=0.01).

85 **Conclusions:** ICI-myocarditis has more life-threatening arrhythmias than ACR and manifests as  
86 decreased voltage, conduction disorders, and repolarization abnormalities . Ventricular  
87 tachycardias, complete heart block, low-voltage, and pathological Q-waves were associated with  
88 adverse outcomes.

## 89 **Introduction**

90 Immune checkpoint inhibitors (ICI) have transformed oncology care with nearly 50% of  
91 cancer patients eligible for ICI treatment.<sup>1</sup> ICI unleash cytotoxic T-cells to achieve anti-tumor  
92 effects but can also cause T-cell and macrophage mediated myocarditis.<sup>2-4</sup> A subset of ICI  
93 recipients (0.3% to 1.1%) experience myocarditis, a rare immune related adverse event (IrAE)  
94 that can cause cardiogenic shock and fatal arrhythmias.<sup>5,6</sup> The diagnosis of ICI-myocarditis  
95 remains challenging.<sup>2,7</sup> Cardiac magnetic resonance imaging (cMRI) and endomyocardial biopsy  
96 (EMB) are often difficult to obtain due to patients' critical condition. Furthermore, sensitivity of  
97 cMRI is estimated at 48% with EMB also resulting in false negatives.<sup>8</sup> A multimodal approach  
98 incorporating biomarker, echocardiographic, and electrocardiographic (ECG) findings may  
99 represent a high yield strategy in diagnosing ICI-related myocarditis.<sup>9</sup> However, ECG findings in  
100 ICI-myocarditis have yet to be systematically described and their prognostic significance has not  
101 yet been studied.

102 We set out to describe presenting ECG and telemetry events in patients with ICI-  
103 myocarditis given that arrhythmogenic events are routinely and easily identified in presenting  
104 patients. We compared these findings to ECG from a cohort of heart transplant recipients  
105 diagnosed with acute cellular rejection (ACR). We hypothesized that ICI-myocarditis would  
106 mimic the low-voltage and QRS prolongation seen in ACR.<sup>4,10,11</sup> This hypothesis was grounded  
107 in the many pathologic similarities between ACR and ICI-myocarditis, including lymphocytic  
108 infiltration, a similarity that has motivated the use of similar immunosuppressive treatment  
109 strategies for both conditions, including corticosteroids and anti-T cell directed therapies.<sup>2-4,12-17</sup>  
110 Additionally, we hypothesized that presenting ECG features in ICI-myocarditis would predict  
111 death and life-threatening ventricular arrhythmias.

## 112 **Methods**

### 113 **ICI-Myocarditis Selection**

114 A retrospective multicenter registry spanning 49 institutions across 11 countries was used to  
115 collect 147 cases of ICI-myocarditis ([Supplemental Table 1](#)) as defined by European Society of  
116 Cardiology criteria for clinically suspected myocarditis with recent ICI exposure.<sup>18</sup> External  
117 collaborating institutions were identified through cardio-oncology departments, via a website  
118 created to collect cases of ICI-myocarditis ([www.cardioonc.org](http://www.cardioonc.org)), and by contacting authors of  
119 published case reports ([Supplementary Data Methods 1](#)). Clinical data was collected and shared  
120 by participating collaborators via a HIPPA-compliant REDCap web-based platform (IRB:  
121 181337; *NCT04294771*).<sup>19,20</sup> All 147 cases were analyzed for presence of arrhythmias  
122 throughout hospitalization as reported by treating physicians. ECG on admission was  
123 independently examined for 125 cases where ECG was obtained within 3 days of admission  
124 ([Supplemental Figure 1](#)). When multiple presenting ECG were available, ECG closest to  
125 presentation and without complete heart block or supraventricular arrhythmias were  
126 preferentially selected. Baseline ECG was defined as the most recent ECG obtained before ICI  
127 exposure and was available for independent examination in 52 cases.

### 128 **ACR selection**

129 Heart transplants at Vanderbilt University Medical Center complicated by grade 2R or 3R  
130 acute cellular rejection were selected in reverse chronological order and spanned 2013-2019.<sup>21</sup>  
131 Cases of concomitant humoral rejection were excluded. ECG obtained less than 10 days after  
132 heart transplantation or more than 3 days from diagnostic EMB were excluded. Donor and  
133 recipient characteristics were collected via chart review and the Organ Procurement and  
134 Transplantation Network database.



## 135 **ECG Interpretation**

136 Two blinded cardiologists (BO, JA) systematically quantified standard ECG intervals  
137 (PR, QRS, QTc, Sokoloff-Lyon Index) and evaluated for relevant qualitative features. ECG  
138 features were aggregated on basis of pathophysiological relatedness ([Supplemental Table 2](#)).  
139 Inter- and intra-observer variability was excellent (intra-class correlation $>0.8$ ) for PR, QRS, QTc  
140 and Sokoloff measurements ([Supplemental Data Methods 2](#)).

## 141 **Statistical Analysis**

142 Paired t-test and McNemar's test were used to compare features of presenting ECG to  
143 baseline ECG. Non-parametric Wilcoxon and Chi-squared test was used to compare ECG  
144 features in ICI-myocarditis to ACR. The primary outcome was myocarditis-related mortality in  
145 thirty days. The secondary outcomes were 1) a composite of either myocarditis-related death or  
146 life-threatening arrhythmia in thirty days (defined as sustained ventricular tachycardia,  
147 ventricular fibrillation, torsade de pointes, pulseless electrical activity, or asystole) and 2) all-  
148 cause mortality in thirty days.

149 The primary outcome analysis used features on the presenting ECG as the independent  
150 variable. Since our methodology preferentially selects for ECG that do not exclusively capture  
151 heart block, life-threatening ventricular arrhythmias, or supraventricular arrhythmias, a focused  
152 secondary analysis used the aggregate incidence of these arrhythmias throughout the entire  
153 hospitalization as the independent variable to test association with outcomes of interest. In both  
154 analyses, Cox proportional-hazards model determined association with all-cause mortality over  
155 the 30-day surveillance period. Competing risk analysis (Subdistribution hazards model, i.e.,  
156 Fine-Gray model) was used to account for mortality due to causes other than myocarditis for the  
157 outcomes of myocarditis-related mortality or composite outcome. These models were separately

158 adjusted for age and sex in a multivariable analysis. Hazard Ratio (HR), 95% confidence  
159 interval, and cumulative incidence curves were presented.

160

161 **Results**

162 ***Demographics***

163           The 147 patients with ICI-myocarditis had a median (IQR) age of 67 years (58-77) and  
164 92/147 (62.6%) were male ([Table 1](#)). Median days from first ICI dose to myocarditis  
165 presentation was 38 days (21-83). In 146 patients with 30-day surveillance, 39/146 (26.7%) died  
166 within 30 days of presentation of which 24/39 (62%) of deaths were attributable to myocarditis.  
167 Other leading causes of death included to cancer progression - 6/39 (15%), sepsis - 6/39 (15%),  
168 and non-cardiac IrAE 7/39 (18%), of which 6/7 (86%) were attributable to non-cardiac  
169 myotoxicities (e.g., myositis). Pacemakers and/or defibrillators were placed in 22/146 (15.1%)  
170 patients within 30 days of presentation.

171           In total, 135/147 (91.8%) patients experienced abnormal ECG during hospitalization.  
172 Throughout hospitalization (median: 11 days, IQR:7-24), 101/147 (68.7%) patients experienced  
173 conduction disorders, which included second-degree heart block (11/147 (7.5%)) and complete  
174 heart block (25/147 (17.0%)). Of note, supraventricular arrhythmias had a cumulative incidence  
175 of 35/147 (23.8%). A total of 22/147 (15.0%) patients experienced life-threatening ventricular  
176 arrhythmia, including 16/147 (10.9%) sustained ventricular tachycardia, 4/147 (2.7%) ventricular  
177 fibrillation, 2/147 (1.4%) torsade de pointes, 4/147 (2.7%) pulseless electrical activity, and 4/147  
178 (2.7%) asystole. A total of 11/147 (7.5%) patients developed both complete heart block and a  
179 life-threatening ventricular arrhythmia.

180 ***Comparison to Baseline ECG***

181           Baseline ECG obtained before ICI exposure was available for comparison in 52 cases.  
182 Paired analysis comparing presenting ECG to baseline ECG showed ICI-myocarditis presents  
183 with elevated heart rate (93.9 vs 80.4 bpm;p=0.009) and prolongation of QRS (95.3 vs 93.2

184 ms;p=0.02) and QT interval corrected for heart rate using Fridericia's formula (441.8 vs 421.0  
185 ms;p=0.03) ([Table 2](#)). There was a significant decrease in cardiac depolarization voltage assessed  
186 by the quantitative Sokolow-Lyonn Index (1.39 vs 1.69 mV;p=0.006). The incidence of left  
187 bundle branch block (LBBB) (10/52 [19%] vs 3/52 [6%];p=0.046) and sinus tachycardia (25/52  
188 [48%] vs 15/52 [29%];p=0.02) were increased from baseline. In aggregate, conduction disorders  
189 (35/52 [67%] vs 23/52 [44%];p=0.01) and repolarization abnormalities (27/52 [52%] vs 13/52  
190 [25%],p=0.008) were significantly increased. Of note, ECG suggestive of pericarditis were  
191 infrequent without significant increase from baseline (4/52 [8%] vs 1/52 [2%],p=0.25).

### 192 ***Outcome Analysis by Cumulative Incidence of Arrhythmia***

193 Patients with ICI-myocarditis were more likely to experience all-cause mortality within  
194 30 days if they developed complete heart block (12/25 [48%] vs 27/122 [22.1%]; HR=2.62, 95%  
195 confidence interval=[1.33-5.18],p=0.01) or life-threatening ventricular arrhythmias (12/22 [55%]  
196 vs 27/125 [21.6%]; HR=3.10 [1.57-6.12],p=0.001) at any point during hospitalization (  
197 cumulative incidence curves in [Figure 1](#)).

198 Additionally, myocarditis-related mortality within 30 days was more common in patients  
199 who developed complete heart block (8/25 [32%] vs 16/122 [13.1%]; hazard ratio by  
200 subdistribution model[HR(sh)=2.73 [1.18-6.32],p=0.019) or life-threatening ventricular  
201 arrhythmias (10/22 [45.5%] vs 14/125 [11.2%]; HR(sh)=4.98 [2.24-11.1],p<0.001) (cumulative  
202 incidence curves in [Figure 1](#)).

203 Composite outcome of myocarditis-related mortality or life-threatening ventricular  
204 arrhythmia within 30 days was also more common in patients who experienced complete heart  
205 block (13/25 [52%] vs 24/122 [19.7%]; HR(sh)=3.55 [1.80-6.99],p<0.001) (figure not shown).

206           Supraventricular arrhythmia at any point during hospitalization was not associated with  
207 either all-cause mortality (13/35 [37%] vs 26/112 [23.2%]; HR=1.67 [0.86-3.25],p=0.13),  
208 myocarditis-related mortality (8/35 [22.9%] vs 16/112 [14.3%]; HR(sh)=1.61 [0.71-3.7],p=0.26),  
209 or composite outcome within 30 days (13/35 [37.1%] vs 24/112 [21.4%]; HR(sh)=1.72 [0.91-  
210 3.26],p=0.10) (cumulative incidence curves in [Supplemental Figure 2](#)).

### 211 ***Outcome Analysis by Presenting ECG Features***

212           A total of 125 ICI-myocarditis patients met criteria to be included in the analysis of  
213 predictive value of presenting ECG features and 22 were excluded due to initial ECG obtained  
214 more than 3 days from admission or initial ECG with paced rhythm or exclusively capturing  
215 ventricular tachycardia (flow chart of analyzed ECG in [Supplemental Figure 1](#), characteristics of  
216 the population in [Supplemental Table 3](#)). Using survival analyses, thirty-day myocarditis-related  
217 mortality was significantly associated with pathological Q-waves (7/19 [37%] vs 13/106  
218 [12.3%]; HR(sh)=3.67 [1.46-9.22],p=0.006) and low QRS voltage (3/6 [50%] vs 17/119  
219 [14.3%]; HR(sh)= 4.50 [1.34-15.12],p=0.02) and showed a trend towards inverse association  
220 with Sokolow-Lyon Index (HR(sh)/mV=0.55 [0.28-1.06],p=0.08) (cumulative incidence curves  
221 in [Figure 2](#), model results in [Supplemental Table 4](#), cumulative incidence curves by Sokolow-  
222 Lyon Index in [Supplemental Figure 3](#)).

223           Using survival analyses, composite outcome of myocarditis-related mortality or life-  
224 threatening ventricular arrhythmia was inversely associated with Sokolow-Lyon Index  
225 (HR(sh)/mV=0.51 [0.30-0.87],p=0.01) and positively associated with RBBB (14/43 [33%] vs  
226 14/82 [17%]; HR(sh)=2.16 [1.05-4.47],p=0.04) and conduction disorders generally (23/79 [29%]  
227 vs 5/46 [11%]; HR(sh)=3.05 [1.20-7.76],p=0.02) (cumulative incidence curves in [Supplemental](#)  
228 [Figure 4](#), model results in [Supplemental Table 4](#), cumulative incidence curves by Sokolow-Lyon

229 Index in [Supplemental Figure 3](#)). Composite outcome of myocarditis-related mortality or life-  
230 threatening ventricular arrhythmia showed a trend towards association with pathological Q-  
231 waves (7/19 [37%] vs 21/106 [19.8%]; HR(sh)=2.10 [0.90-4.89],p=0.09) and low QRS voltage  
232 (3/6 [50%] vs 25/119 [21.0%]; HR(sh)= 2.57 [0.90-7.28],p=0.08).

233 Similarly, all-cause mortality was associated with pathological Q-waves (12/19 [63%] vs  
234 18/106 [17.0%]; HR=5.80 [2.78-12.12],p<0.001) and inversely associated with Sokolow-Lyon  
235 Index (HR/mV=0.59 [0.35-0.98],p=0.04) (cumulative incidence curves in [Figure 2](#), model results  
236 in [Supplemental Table 4](#), cumulative incidence curves by Sokolow-Lyon Index in [Supplemental](#)  
237 [Figure 3](#)).

238 Multivariable survival analysis was performed by adding covariates of age and sex into  
239 cox proportional-hazards model and sub distribution hazards models. This analysis mirrored the  
240 results of survival analyses described above (myocarditis-related mortality & composite  
241 outcome: [Table 2](#), all-cause mortality: [Supplemental Table 5](#); [Figures 1 & 2](#); [Supplemental](#)  
242 [Figures 2 & 3](#)).

### 243 ***Comparison to ACR***

244 The 50 patients with ACR had median (IQR) age of 51 years (43-62), 64% (32/50 ) of  
245 whom were male ([Supplemental Table 6](#)). Median days from transplant to ACR was 145 days  
246 (IQR:26-283). 29/50 (58%) were admitted during or as a result of ACR, with median length of  
247 stay of 12 days (IQR:5-21). 2R rejection was seen in 46/50 (92%) and 4/50 (8%) had 3R  
248 rejection. Throughout hospitalization (if applicable) or at presenting ECG, 34/50 (68%) patients  
249 experienced conduction disorders but second or third-degree heart block was not seen in any  
250 patients. There was a cumulative incidence of 6/50 (12%) supraventricular arrhythmias and 1/50

251 (2%) life-threatening ventricular arrhythmia. None of the patients required a pacemaker and/or  
252 defibrillator within 30 days after ACR diagnosis.

253 Compared to ACR, ECG at the time of ICI-myocarditis had comparable voltage and QRS  
254 duration ([Table 3](#)). ICI-myocarditis had significantly more LBBB (20/125 [16.0%] vs 0/50  
255 [0%]; $p=0.003$ ) and left anterior fascicular block (LAFB) (24/125 [19.2%] versus 3/50  
256 [6%]; $p=0.02$ ) but fewer right bundle branch block (RBBB) (43/125 [34.4%] vs 27/50  
257 [54%]; $p=0.02$ ), and right atrial abnormality (4/125 [3.2%] vs 10/50 [20%]; $p<.001$ ). In aggregate,  
258 ICI-myocarditis had more premature ventricular contractions (PVCs) (18/125 [14.4%] vs 1/50  
259 [2%]; $p=0.02$ ) but fewer repolarization abnormalities (53/125 [42.4%] vs 33/50 [66%]; $p=0.005$ ).  
260 ACR was less severe than ICI-myocarditis in terms of 30-day all-cause mortality (0/50 [0%] vs  
261 39/146 [26.7%]; $p<0.001$ ), in-hospital incidence of left ventricular ejection fraction less than 50%  
262 (4/28 [14.3%] vs 66/141 [46.8%]; $p=0.001$ ), progression to severe life-threatening ventricular  
263 arrhythmias at admission or during hospital stay (1/50 [2%] vs 22/147 [16.3%]; $p=0.01$ ), and  
264 pacemaker or defibrillator placement within 30 days of the ACR or ICI-myocarditis event (0/50  
265 [0%] vs 22/146 [11.1%]; $p=0.004$ ). Additionally, ACR had a lower cumulative incidence of third-  
266 degree heart block (0/50 [0%] vs 25/147 [17.0%]; $p=0.002$ ) compared to ICI-myocarditis.

267

268

269

270 **Discussion**

271 In this study, we assessed ECG features of ICI-myocarditis using a large international  
272 database. We show that ICI-myocarditis manifests as clinically significant electrocardiographic  
273 disturbances including high degree heart block and ventricular arrhythmias, which are strongly  
274 associated with poor clinical outcomes. Compared to baseline ECG, there are also other ECG  
275 manifestations, including repolarization abnormalities, decreased voltage, and increases in heart  
276 rate, QRS, and QTc. Low-voltage, conduction disorders, and pathological Q-waves were  
277 predictive of myocarditis-related death, life-threatening cardiac arrhythmias, and/or overall  
278 mortality.

279 This is the first study to systematically analyze ECG in ICI-myocarditis from a large  
280 number of patients with ICI-associated myocarditis with two cardiologists systematically  
281 quantifying and evaluated the ECG while blinded to the clinical features for each patient.  
282 Previous cohort studies had reported electrical disturbances as a major clinical feature of ICI-  
283 associated myocarditis.<sup>6,8,22</sup> Our finding that 91.8% of patients have abnormal ECG is supported  
284 by Mahmoud et al's cohort of 35 patients where 89% of patients had abnormal ECG.<sup>6</sup> In  
285 addition, our finding that 42% of patients present with ST-segment or T wave abnormalities was  
286 similar to the 37% in Escudier et al.'s 30 patient cohort and 55% in Zhang et. al's 103 patient  
287 cohort.<sup>8,23</sup> In addition, Zhang et al found 80% of patients presented in sinus rhythm with a  
288 cumulative incidence of complete heart block of 16% compared to 86% and 17% respectively in  
289 our cohort.<sup>8</sup>

290 Although we hypothesized that the electrophysiological manifestations of ICI-  
291 myocarditis would resemble those of ACR, given the striking pathological similarities, our  
292 results show that ICI-myocarditis is both more arrhythmogenic and more lethal than ACR. Life-



293 threatening ventricular arrhythmias, PVCs, and conduction disorders affecting the left ventricle  
294 including complete heart block were more common in ICI-myocarditis but not a major feature of  
295 ACR.

296 Interestingly, our study also represents the largest description of ECG findings in  
297 moderate-severe ACR. While previous studies have correlated ACR with atrial arrhythmias,  
298 sustained ventricular arrhythmias, PR, QRS, and QT lengthening, these changes were  
299 infrequently seen in presenting ECG among our cohort.<sup>22,24</sup> Instead, most ECG changes could be  
300 explained by post-surgical changes, including sinus tachycardia, P-wave enlargement, right  
301 bundle branch block, and nonspecific ST changes.<sup>24</sup> While low voltage and pathological Q  
302 waves were infrequent, they were not significantly different from the ICI-myocarditis cohort,  
303 suggesting that both immune infiltrates had similar electromotive effects despite differing impact  
304 on electrical conduction.

305 Our prognostic analysis adds to and is supportive of predictive ECG studies in general  
306 myocarditis. While several studies of myocarditis due to heterogenous causes have shown  
307 pathological Q-waves to be predictive of fulminant myocarditis, they did not find significant  
308 association with long-term survival.<sup>25,26</sup> While studies have shown that low-voltage lacks  
309 predictive value for death in allograft rejection, it has not previously been studied in  
310 myocarditis.<sup>10,27</sup> It is interesting that while Rassi et. al found Chagas heart disease to have a 9%  
311 prevalence of low-voltage with a hazard ratio for mortality of 1.87, we found a similar  
312 prevalence of 8% in ICI-myocarditis but with much higher hazard ratio for mortality of  
313 approximately 4.5.<sup>28</sup> This may be explained by differences in acuity between these two  
314 inflammatory cardiomyopathies as well as the relatively denser inflammatory infiltrates in ICI-  
315 myocarditis.<sup>2,29</sup>

316 Both low-voltage and pathological Q-waves signify a loss of electromotive force and are  
317 intuitive markers for the extent of inflammatory infiltrate and cardiomyocyte damage. Unlike  
318 low-voltage where there is a global decrease in electrical current, Q-waves represent potentials  
319 from the unaffected ventricular wall opposite to an inflammatory focus that has become  
320 electrically inert. The finding that these two features are strong predictors of mortality suggests  
321 that suppressing the underlying inflammatory infiltrate may be a greater priority than  
322 antiarrhythmic drugs or devices.

323 ICI-myocarditis is histologically characterized by dense, patchy infiltrates of  
324 lymphocytes and macrophages that affect both the myocardium and the conduction system.<sup>2</sup>  
325 Compared with ACR, which is primarily lymphocytic, ICI-myocarditis is characterized by both  
326 lymphocyte and macrophage infiltrates with a higher CD68/CD3 (macrophages/lymphocytes)  
327 ratio.<sup>3</sup> Denser infiltrates in ICI-myocarditis are associated with increased myocyte necrosis and a  
328 different molecular profile with lower macrophage expression of PD-L1 perhaps reflecting an  
329 influx of the reparative M2 macrophage subpopulation.<sup>3</sup> Importantly, macrophages have been  
330 shown to electrically couple with cardiomyocytes even in the absence of disease, thereby  
331 facilitating depolarization and improving AV conduction.<sup>30</sup> It is possible that changes in  
332 macrophage phenotype and density in ICI-myocarditis may mediate the high frequency of  
333 conduction system blocks and ventricular ectopy seen in our cohort. Mouse models of ICI-  
334 myocarditis have replicated arrhythmogenicity and lympho-histiocytic infiltration seen in  
335 humans and may offer future insights into the electrical contribution of immune cells in  
336 inflammatory cardiomyopathies.<sup>31</sup> Separately, other novel forms of cancer immunotherapy also  
337 demonstrate high levels of arrhythmogenicity; ventricular tachycardias and atrial fibrillation are  
338 disproportionately reported in CAR-T therapy while 20% of patients receiving IL-2 therapy

339 developed arrhythmias requiring pharmacological intervention.<sup>32-35</sup> These examples further  
340 illustrate how the emerging relationship between the immune system and cardiac conduction will  
341 become increasingly important in treatment of patients receiving immunotherapy and as a target  
342 for arrhythmia management more broadly.

343         Although this study would not have been possible without a multicenter approach, this  
344 introduced variability in data collection and interpretation. To mitigate this effect, clear criteria  
345 for adjudication were provided and each submission was subjected to a bi-institutional review  
346 process. Self-reporting allowed us to assemble an ICI-myocarditis cohort of this size but likely  
347 selected for more clinically severe cases. To account for this in our comparison to ACR, we  
348 excluded Grade 1R rejection. Nevertheless, our findings are less generalizable to low-severity  
349 cases of ICI-myocarditis. The comparison to baseline ECG was limited by availability of  
350 baseline ECG which likely enriched for patients with pre-existing cardiac disease thereby  
351 underestimating ECG changes caused by ICI. Our analysis only interprets initial ECG and thus  
352 does not fully capture the predictive value of ECG changes that develop during hospitalization.  
353 Although we were unable to correct for variance in treatment in the outcome analysis, we believe  
354 that the composite outcome of life-threatening ventricular arrhythmia or myocarditis-related  
355 death helps mitigate this by capturing early events that would have led to death if not for  
356 aggressive therapy.

### 357 ***Conclusions***

358         On ECG, ICI-myocarditis manifests as diffuse alteration of the cardiac conduction system  
359 represented by conduction blocks, decrease in QRS voltage, and appearance of cardiomyocyte  
360 death with pathological Q-waves. These features predict severe life-threatening ventricular  
361 arrhythmias and death. Clinicians should focus on identifying these ECG changes as part of

362 multimodal diagnostic workup for ICI-myocarditis. Patients with these features are at higher risk  
363 for adverse outcomes and may benefit from more aggressive treatment and monitoring strategies.

364

### 365 **Acknowledgments**

366 We would like to thank all the collaborators who have participated in this multicenter database

367 ([Supplemental Table 1](#)). This study was supported by the following grants: UL1 TR000445 from

368 NCATS/NIH.

369 **References (38 / 50-75 citations)**

- 370 1. Haslam A, Prasad V. Estimation of the Percentage of US Patients With Cancer Who Are  
371 Eligible for and Respond to Checkpoint Inhibitor Immunotherapy Drugs. *JAMA network*  
372 *open*. 2019;2(5):e192535-e192535. doi:10.1001/jamanetworkopen.2019.2535
- 373 2. Johnson DB, Balko JM, Compton ML, et al. Fulminant Myocarditis with Combination  
374 Immune Checkpoint Blockade. *The New England journal of medicine*.  
375 2016;375(18):1749-1755. doi:10.1056/NEJMoa1609214
- 376 3. Champion SN, Stone JR. Immune checkpoint inhibitor associated myocarditis occurs in  
377 both high-grade and low-grade forms. *Modern pathology* □: *an official journal of the*  
378 *United States and Canadian Academy of Pathology, Inc*. 2020;33(1):99-108.  
379 doi:10.1038/s41379-019-0363-0
- 380 4. Salem J-E, Allenbach Y, Vozy A, et al. Abatacept for Severe Immune Checkpoint  
381 Inhibitor-Associated Myocarditis. *The New England journal of medicine*.  
382 2019;380(24):2377-2379. doi:10.1056/NEJMc1901677
- 383 5. Salem J-E, Manouchehri A, Moey M, et al. Cardiovascular toxicities associated with  
384 immune checkpoint inhibitors: an observational, retrospective, pharmacovigilance study.  
385 *The Lancet Oncology*. 2018;19(12):1579-1589. doi:10.1016/S1470-2045(18)30608-9
- 386 6. Mahmood SS, Fradley MG, Cohen J V, et al. Myocarditis in Patients Treated With  
387 Immune Checkpoint Inhibitors. *Journal of the American College of Cardiology*.  
388 2018;71(16):1755-1764. doi:10.1016/j.jacc.2018.02.037
- 389 7. Norwood TG, Westbrook BC, Johnson DB, et al. Smoldering myocarditis following  
390 immune checkpoint blockade. *Journal for immunotherapy of cancer*. 2017;5(1):91.  
391 doi:10.1186/s40425-017-0296-4
- 392 8. Zhang L, Awadalla M, Mahmood SS, et al. Cardiovascular magnetic resonance in immune  
393 checkpoint inhibitor-associated myocarditis. *European heart journal*. February 2020.  
394 doi:10.1093/eurheartj/ehaa051
- 395 9. Bonaca MP, Olenchock BA, Salem J-E, et al. Myocarditis in the Setting of Cancer  
396 Therapeutics: Proposed Case Definitions for Emerging Clinical Syndromes in Cardio-  
397 Oncology. *Circulation*. 2019;140(2):80-91.  
398 doi:10.1161/CIRCULATIONAHA.118.034497
- 399 10. Locke TJ, Karnik R, McGregor CG, Bexton RS. The value of the electrocardiogram in the  
400 diagnosis of acute rejection after orthotopic heart transplantation. *Transplant*  
401 *international* □: *official journal of the European Society for Organ Transplantation*.  
402 1989;2(3):143-146. doi:10.1007/bf02414601
- 403 11. Kowalski O, Zakliczyński M, Lenarczyk R, et al. Electrophysiologic parameters  
404 suggesting significant acute cellular rejection of the transplanted heart. *Annals of*  
405 *transplantation*. 2006;11(1):35-39.
- 406 12. Geraud A, Gougis P, Vozy A, et al. Clinical Pharmacology and Interplay of Immune  
407 Checkpoint Agents: A Yin-Yang Balance. *Annual review of pharmacology and*  
408 *toxicology*. September 2020. doi:10.1146/annurev-pharmtox-022820-093805
- 409 13. Zhang L, Zlotoff DA, Awadalla M, et al. Major Adverse Cardiovascular Events and the  
410 Timing and Dose of Corticosteroids in Immune Checkpoint Inhibitor-Associated  
411 Myocarditis. *Circulation*. 2020;141(24):2031-2034.  
412 doi:10.1161/CIRCULATIONAHA.119.044703
- 413 14. Jain V, Mohebtash M, Rodrigo ME, Ruiz G, Atkins MB, Barac A. Autoimmune

- 414 Myocarditis Caused by Immune Checkpoint Inhibitors Treated With Antithymocyte  
415 Globulin. *Journal of immunotherapy (Hagerstown, Md*: 1997). 2018;41(7):332-335.  
416 doi:10.1097/CJI.0000000000000239
- 417 15. Tay RY, Blackley E, McLean C, et al. Successful use of equine anti-thymocyte globulin  
418 (ATGAM) for fulminant myocarditis secondary to nivolumab therapy. *British journal of*  
419 *cancer*. 2017;117(7):921-924. doi:10.1038/bjc.2017.253
- 420 16. Bonaros N, Dunkler D, Kocher A, et al. Ten-year follow-up of a prospective, randomized  
421 trial of BT563/bb10 versus anti-thymocyte globulin as induction therapy after heart  
422 transplantation. *The Journal of heart and lung transplantation*: the official publication  
423 of the International Society for Heart Transplantation. 2006;25(9):1154-1163.  
424 doi:10.1016/j.healun.2006.03.024
- 425 17. Ruan V, Czer LSC, Awad M, et al. Use of Anti-Thymocyte Globulin for Induction  
426 Therapy in Cardiac Transplantation: A Review. *Transplantation proceedings*.  
427 2017;49(2):253-259. doi:10.1016/j.transproceed.2016.11.034
- 428 18. Caforio ALP, Pankuweit S, Arbustini E, et al. Current state of knowledge on aetiology,  
429 diagnosis, management, and therapy of myocarditis: a position statement of the European  
430 Society of Cardiology Working Group on Myocardial and Pericardial Diseases. *European*  
431 *heart journal*. 2013;34(33):2636-2648, 2648a-2648d. doi:10.1093/eurheartj/eh210
- 432 19. Harris PA, Taylor R, Thielke R, Payne J, Gonzalez N, Conde JG. Research electronic data  
433 capture (REDCap)--a metadata-driven methodology and workflow process for providing  
434 translational research informatics support. *Journal of biomedical informatics*.  
435 2009;42(2):377-381. doi:10.1016/j.jbi.2008.08.010
- 436 20. Harris PA, Taylor R, Minor BL, et al. The REDCap consortium: Building an international  
437 community of software platform partners. *Journal of biomedical informatics*.  
438 2019;95:103208. doi:10.1016/j.jbi.2019.103208
- 439 21. Stewart S, Winters GL, Fishbein MC, et al. Revision of the 1990 working formulation for  
440 the standardization of nomenclature in the diagnosis of heart rejection. *The Journal of*  
441 *heart and lung transplantation*: the official publication of the International Society for  
442 Heart Transplantation. 2005;24(11):1710-1720. doi:10.1016/j.healun.2005.03.019
- 443 22. Hickey KT, Sciacca RR, Chen B, et al. Electrocardiographic Correlates of Acute Allograft  
444 Rejection Among Heart Transplant Recipients. *American journal of critical care*: an  
445 official publication, American Association of Critical-Care Nurses. 2018;27(2):145-150.  
446 doi:10.4037/ajcc2018862
- 447 23. Escudier M, Cautela J, Malissen N, et al. Clinical Features, Management, and Outcomes  
448 of Immune Checkpoint Inhibitor-Related Cardiotoxicity. *Circulation*. 2017;136(21):2085-  
449 2087. doi:10.1161/CIRCULATIONAHA.117.030571
- 450 24. Sandhu JS, Curtiss EI, Follansbee WP, Zerbe TR, Kormos RL. The scalar  
451 electrocardiogram of the orthotopic heart transplant recipient. *American heart journal*.  
452 1990;119(4):917-923. doi:10.1016/s0002-8703(05)80332-1
- 453 25. Nakashima H, Katayama T, Ishizaki M, Takeno M, Honda Y, Yano K. Q wave and non-Q  
454 wave myocarditis with special reference to clinical significance. *Japanese heart journal*.  
455 1998;39(6):763-774. doi:10.1536/ihj.39.763
- 456 26. Morgera T, Di Lenarda A, Dreas L, et al. Electrocardiography of myocarditis revisited:  
457 clinical and prognostic significance of electrocardiographic changes. *American heart*  
458 *journal*. 1992;124(2):455-467. doi:10.1016/0002-8703(92)90613-z
- 459 27. Keren A, Gillis AM, Freedman RA, et al. Heart transplant rejection monitored by signal-



- 460 averaged electrocardiography in patients receiving cyclosporine. *Circulation*. 1984;70(3  
461 Pt 2):I124-9.
- 462 28. Rassi AJ, Rassi A, Little WC, et al. Development and validation of a risk score for  
463 predicting death in Chagas' heart disease. *The New England journal of medicine*.  
464 2006;355(8):799-808. doi:10.1056/NEJMoa053241
- 465 29. Pereira Barretto AC, Mady C, Arteaga-Fernandez E, et al. Right ventricular  
466 endomyocardial biopsy in chronic Chagas' disease. *American heart journal*.  
467 1986;111(2):307-312. doi:10.1016/0002-8703(86)90144-4
- 468 30. Hulsmans M, Clauss S, Xiao L, et al. Macrophages Facilitate Electrical Conduction in the  
469 Heart. *Cell*. 2017;169(3):510-522.e20. doi:10.1016/j.cell.2017.03.050
- 470 31. Wei SC, Meijers WC, Axelrod ML, et al. A genetic mouse model recapitulates immune  
471 checkpoint inhibitor-associated myocarditis and supports a mechanism-based therapeutic  
472 intervention. *Cancer discovery*. November 2020. doi:10.1158/2159-8290.CD-20-0856
- 473 32. Natali LC, Maddukuri P, Lucariello R, et al. Significant arrhythmias associated with  
474 Interleukin-2 therapy. *Journal of Clinical Oncology*. 2005;23(16\_suppl):2588.  
475 doi:10.1200/jco.2005.23.16\_suppl.2588
- 476 33. Salem J-E, Ederhy S, Lebrun-Vignes B, Moslehi JJ. Cardiac Events Associated With  
477 Chimeric Antigen Receptor T-Cells (CAR-T): A VigiBase Perspective. *Journal of the*  
478 *American College of Cardiology*. 2020;75(19):2521-2523. doi:10.1016/j.jacc.2020.02.070
- 479 34. Lefebvre B, Kang Y, Smith AM, Frey N V, Carver JR, Scherrer-Crosbie M.  
480 Cardiovascular Effects of CAR T Cell Therapy: A Retrospective Study. *JACC*  
481 *CardioOncology*. 2020;2(2):193-203. doi:10.1016/j.jacc.2020.04.012
- 482 35. Alvi RM, Frigault MJ, Fradley MG, et al. Cardiovascular Events Among Adults Treated  
483 With Chimeric Antigen Receptor T-Cells (CAR-T). *Journal of the American College of*  
484 *Cardiology*. 2019;74(25):3099-3108. doi:10.1016/j.jacc.2019.10.038
- 485 36. Surawicz B, Childers R, Deal BJ, et al. AHA/ACCF/HRS recommendations for the  
486 standardization and interpretation of the electrocardiogram: part III: intraventricular  
487 conduction disturbances: a scientific statement from the American Heart Association  
488 Electrocardiography and Arrhythmias Committee. *Journal of the American College of*  
489 *Cardiology*. 2009;53(11):976-981. doi:10.1016/j.jacc.2008.12.013
- 490 37. Thygesen K, Alpert JS, Jaffe AS, et al. Fourth Universal Definition of Myocardial  
491 Infarction (2018). *Journal of the American College of Cardiology*. 2018;72(18):2231-  
492 2264. doi:10.1016/j.jacc.2018.08.1038
- 493 38. Hancock EW, Deal BJ, Mirvis DM, et al. AHA/ACCF/HRS recommendations for the  
494 standardization and interpretation of the electrocardiogram: part V: electrocardiogram  
495 changes associated with cardiac chamber hypertrophy: a scientific statement from the  
496 American Heart Association Electrocardiograph. *Journal of the American College of*  
497 *Cardiology*. 2009;53(11):992-1002. doi:10.1016/j.jacc.2008.12.015  
498

499 **Tables/Figures**

500 **Table 1. ICI-myocarditis cases characteristics and outcomes**

	Total
	Med (IQR) N; n/N (%)
Age	67 (58-77) N=147
Female	55/147 (37.4%)
Body Mass Index	25.3 (21.4-28.8) N=138
Hyperlipidemia	49/138 (35.5%)
Diabetes	25/138 (18.1%)
Hypertension	77/140 (55.0%)
Prior Tobacco User	69/137 (50.4%)
Pre-existing Stroke	5/138 (3.6%)
Pre-existing Peripheral Vascular Disease	11/137 (8.0%)
Pre-existing Coronary Artery Disease	27/139 (19.4%)
Pre-existing Heart Failure	16/138 (11.6%)
1 or More Traditional Cardiovascular Risk Factors (defined as HLD or DM2 or HTN or Tobacco use)	115/140 (82.1%)
Prior History of Cardiac Disease (defined as CAD or CHF)	34/137 (24.8%)
Prior History of Cardiovascular Disease (PVD, CVA, CAD, CHF or HTN)	89/138 (64.5%)
Index ICI Therapy Category	
- Anti CTLA-4 & PD1/PDL1 Combination Therapy	27/147 (18.4%)
- Anti CTLA-4 Monotherapy	41/147 (27.9%)
- Anti PD1/PDL1 Monotherapy	79/147 (53.7%)
Days from First ICI Dose to Hospital Admission	38 (21-83) N=139
Days from Last ICI Dose to Hospital Admission	15 (9-22) N=139
Number of Doses ICI Received	2 (1-4) N=140
Cancer Type	
- Bladder Cancer	4/147 (2.7%)
- Breast Cancer	1/147 (0.7%)
- Kidney Cancer	16/147 (10.9%)
- Leukemia	2/147 (1.4%)
- Lung Cancer	52/147 (35.4%)
- Non-Hodgkin Lymphoma	1/147 (0.7%)
- Prostate Cancer	2/147 (1.4%)
- Melanoma	40/147 (27.2%)
- Thymic Cancer (Non-Thymoma)	2/147 (1.4%)
- Esophageal Cancer	4/147 (2.7%)



- Gastric Cancer	2/147 (1.4%)
- Colorectal Cancer	1/147 (0.7%)
- Endometrial Cancer	1/147 (0.7%)
- Hepatocellular Carcinoma	2/147 (1.4%)
- Cholangiocarcinoma	1/147 (0.7%)
- Squamous Cell Carcinoma	4/147 (2.7%)
- Other Cancer	1/147 (0.7%)
- Mesothelioma	3/147 (2.0%)
- Thymoma	8/147 (5.4%)
At Least One Other Concomitant IrAE	102/147 (69.4%)
Concomitant IrAE: Myasthenia Gravis-Like Syndrome	32/147 (21.8%)
Concomitant IrAE: Immune-Related Myositis / Rhabdomyolysis	45/147 (30.6%)
Abnormal ECG <sup>18</sup>	135/147 (91.8%)
Abnormal Troponin	123/132 (93.2%)
Initial Troponin >10x Upper Limit of Normal	81/126 (64.3%)
Reduced LVEF On Initial TTE Admission (LVEF<50%)	59/141 (41.8%)
Reduced LVEF During Hospitalization For ICI-Myocarditis (LVEF<50%)	66/141 (46.8%)
Cardiac Magnetic Resonance Imaging Compatible with Myocarditis	54/75 (72%)
Cardiac Biopsy Proven Myocarditis	29/40 (73%)
<b><i>Cumulative Incidence of Arrhythmia Throughout Hospital Stay</i></b>	
Supraventricular Arrhythmia*	35/147 (23.8%)
- Atrial Fibrillation	31/147 (21.1%)
- Atrial Flutter	2/147 (1.4%)
- Multifocal Atrial Tachycardia	2/147 (1.4%)
Conduction Disorder*	101/147 (68.7%)
- Bundle Branch or Fascicular Blocks	90/147 (61.2%)
- First-Degree Heart Block	23/147 (15.6%)
- Second-Degree Heart Block	11/147 (7.5%)
- Third-Degree Heart Block	25/147 (17.0%)
ECG Finding of Pericarditis (PR Depression or Diffuse ST Elevations)	20/147 (13.6%)
Repolarization Abnormalities (ST-Segment Or T-Wave Changes)	72/147 (49.0%)
Premature Ventricular Complexes (Any Type)	41/147 (27.9%)
Ventricular Arrhythmias (Any Type; Sustained or Non-Sustained)	25/147 (17.0%)
Life-Threatening Ventricular Arrhythmias*	22/147 (15.0%)
- Asystole	4/147 (2.7%)
- Pulseless Electrical Activity	4/147 (2.7%)
- Ventricular Fibrillation	4/147 (2.7%)
- Ventricular Tachycardia Unspecified Morphology, Sustained	7/147 (4.8%)
- Ventricular Tachycardia Monomorphic, Sustained	12/147 (8.2%)
- Ventricular Tachycardia Polymorphic, Sustained	1/147 (0.7%)

\* this category includes rhythms below and that patients may experience more than one of these rhythms

- Ventricular Tachycardia Torsade De Pointes, Sustained	2/147 (1.4%)
Third-Degree Heart Block and/or Life-Threatening Ventricular Arrhythmia	36/147 (24.5%)
Third-Degree Heart Block and Life-Threatening Ventricular Arrhythmia	11/147 (7.5%)
<b>Outcome</b>	
Placement of a Pacemaker and/or Defibrillator Within 30 days	22/146 (15.1%)
Pacemaker Without Defibrillator Within 30 days	21/146 (14.4%)
Length of Stay (In Days)	11 (7-24) N=98
In-Hospital Mortality	42/147 (28.6%)
30-Day All-Cause Mortality	39/146 (26.7%)
30-Day Myocarditis-Related Mortality or Life-Threatening Ventricular Arrhythmia	37/146 (25.3%)
Diagnostic Certainty <sup>9</sup>	
- Definite Myocarditis	81/143 (56.6%)
- Probable Myocarditis	27/143 (18.9%)
- Possible Myocarditis	35/143 (24.5%)
<b>Cause of Death<sup>†</sup> (Of 39 Patients With 30d All-Cause Mortality)</b>	
Myocarditis	24/39 (61.5%)
Cancer Progression	6/39 (15.4%)
Immune Related Adverse Event Other Than Cardiotoxicity <sup>†</sup>	7/39 (17.9%)
- Non-Cardiac Myotoxicities Including Myasthenia Gravis-Like Syndrome Associated with Diaphragmatic Failure	6/7 (85.7%)
- Thrombocytopenia, Immune Related	1/7 (14.3%)
Sepsis	6/39 (15.4%)
Thromboembolic Event	2/39 (5.1%)
Hemorrhage	3/39 (7.7%)
Respiratory Failure (Other Than Diaphragmatic Failure) <sup>‡</sup>	3/39 (7.7%)
- Pulmonary Infection	2/3 (66.7%)
- Acute Respiratory Distress Syndrome	2/3 (66.7%)
Ischemic Stroke	1/39 (2.6%)
Unknown	1/39 (2.6%)

501  
502 *Abbreviations: CAD: coronary artery diseases; CHF: congestive heart failure; CTLA-4:*  
503 *Cytotoxic T-lymphocyte-associated protein 4; CVA: Cerebrovascular accident; HTN:*  
504 *Hypertension; ICI: Immune checkpoint inhibitor; IrAE: Immune Related Adverse Event;*  
505 *LVEF: Left ventricular ejection fraction; PDI: Programmed cell death protein 1; PD-L1:*  
506 *Programmed death-ligand 1; PVD: Peripheral vascular disease; TTE: Transthoracic*  
507 *echocardiogram*

<sup>†</sup> note more than one cause may contribute to death

<sup>‡</sup> note more than one cause may contribute to respiratory failure

508 **Table 2: Presenting ECG of ICI-myocarditis as compared to baseline and as predictors of myocarditis-related mortality and**  
 509 **composite outcome using survival analyses adjusting for age and sex\***

	ICI-Myocarditis, Presenting ECG	ICI-Myocarditis, Baseline ECG		Subdistribution Hazards Model For 30d Myocarditis- Related Mortality Adjusting for Age and Sex	Subdistribution Hazards Model For 30d Composite Outcome Adjusting for Age and Sex
	Med (IQR) N; n/N (%)	Med (IQR) N; n/N (%)	p-value (paired T- test)	HR(sh) [95%CI], p-value*	HR(sh) [95%CI], p-value*
Heart Rate (bpm)	93.9 [72.6-114.7] N=52	80.4 [68.1-94.8] N=52	0.009	1.01 [0.99-1.03], p=.52 N=125	1.00 [0.99-1.02], p=.60 N=125
PR Length (ms)	162.8 [136.0- 186.0] N=42	154.1 [136.0- 187.6] N=46	0.10	1.00 [0.99-1.02], p=.90 N=107	1 [0.99-1.01], p=.62 N=107
QTcF Length (ms)	441.8 [414.9- 462.6] N=49	421.0 [399.2- 440.4] N=51	0.03	1.00 [0.99-1.01], p=.59 N=122	1.00 [1.00-1.01], p=.42 N=122
QRS Length (ms)	95.3 [85.7-118.2] N=52	93.2 [82.7-102.5] N=52	0.02	1.01 [0.99-1.02], p=.57 N=125	1.01 [1-1.03], p=.03 N=125
Sokolow-Lyon Index (mV)	1.39 [0.85-2.03] N=52	1.69 [1.28-2.26] N=52	0.006	0.54 [0.30-0.97], p=.04 N=124	0.50 [0.30-0.85], p=.01 N=124
			p-value (McNemar's test)		
<b>CONDUCTION DISORDERS<sup>†</sup></b>	35/52 (67%)	23/52 (44%)	0.01	1.91 [0.71-5.14], p=.20 N=125	3.27 [1.29-8.34], p=.01 N=125
- Bundle Branch Block, Left Bundle	10/52 (19%)	3/52 (6%)	0.05	0.85 [0.26-2.79], p=.79 N=125	1.49 [0.62-3.61], p=.37 N=125
- Bundle Branch Block, Right Bundle	14/52 (27%)	9/52 (17%)	0.18	1.63 [0.69-3.85], p=.27 N=125	2.22 [1.06-4.67], p=.04 N=125
- Fascicular Block, Left Anterior	10/52 (19%)	5/52 (10%)	0.23	1.58 [0.57-4.41], p=.38 N=125	1.81 [0.82-3.97], p=.14 N=125
- Fascicular Block, Left Posterior	6/52 (12%)	2/52 (4%)	0.22	1.40 [0.47-4.14], p=.54 N=125	1.56 [0.52-4.62], p=.43 N=125

\* Only arrhythmia subgroups with at least n>2 in ICI-myocarditis presenting ECG are shown

† When multiple eligible ECG were available, ECG without complete heart block or supraventricular arrhythmias were preferentially selected for this analysis focusing on PR, QRS and QTc measurements. Please see Table 1 for cumulative incidence of arrhythmias in ICI-myocarditis.

- Heart Block, First Degree	9/52 (17%)	7/52 (13%)	0.72	1.78 [0.57-5.58], p=.32 N=125	2.14 [0.83-5.53], p=.12 N=125
<b>ECG Findings of Pericarditis</b>	4/52 (8%)	1/52 (2%)	0.25	0.58 [0.14-2.40], p=.46 N=125	0.98 [0.34-2.82], p=.97 N=125
- ST Segment Elevation, Diffuse	3/52 (6%)	1/52 (2%)	0.62	0.63 [0.15-2.61], p=.52 N=125	1.05 [0.36-3.05], p=.93 N=125
<b>PREMATURE VENTRICULAR COMPLEX (ALL TYPES)</b>	9/52 (17%)	3/52 (6%)	0.08	1.36 [0.43-4.32], p=.61 N=125	1.95 [0.74-5.10], p=.18 N=125
- Premature Ventricular Complex	9/52 (17%)	3/52 (6%)	0.08	0.96 [0.27-3.38], p=.95 N=125	1.51 [0.56-4.07], p=.42 N=125
<b>SINUS MECHANISM</b>	42/52 (81%)	46/52 (88%)	0.29	0.58 [0.21-1.59], p=.29 N=125	0.70 [0.29-1.70], p=.43 N=125
- Normal Sinus Rhythm	17/52 (33%)	31/52 (60%)	0.002	0.43 [0.16-1.16], p=.09 N=125	0.61 [0.28-1.32], p=.21 N=125
- Sinus Tachycardia	25/52 (48%)	15/52 (29%)	0.02	1.48 [0.6-3.65], p=.39 N=125	1.28 [0.61-2.68], p=.52 N=125
<b>REPOLARIZATION ABNORMALITIES</b>	27/52 (52%)	13/52 (25%)	0.008	1.57 [0.64-3.89], p=.33 N=125	1.48 [0.68-3.24], p=.33 N=125
- ST Segment Depression, Diffuse	5/52 (10%)	1/52 (2%)	0.22	0.66 [0.09-4.73], p=.68 N=125	0.47 [0.07-3.27], p=.44 N=125
- ST Segment Depression, Regional	4/52 (8%)	0/52 (0%)	NA	1.04 [0.13-8.56], p=.97 N=125	1.48 [0.35-6.32], p=.59 N=125
- T Wave Inversions	21/52 (40%)	12/52 (23%)	0.07	1.98 [0.81-4.82], p=.13 N=125	1.42 [0.63-3.24], p=.40 N=125
<b>SUPRAVENTRICULAR ARRHYTHMIA<sup>†</sup></b>	7/52 (13%)	6/52 (12%)	1.00	2.84 [0.99-8.16], p=.052 N=125	2.39 [1.01-5.65], p=.047 N=125
- Atrial Fibrillation <sup>†</sup>	6/52 (12%)	5/52 (10%)	1.00	2.19 [0.67-7.24], p=.20 N=125	2.11 [0.77-5.76], p=.14 N=125
<b>UNCATEGORIZED</b>					
Premature Atrial Complex	5/52 (10%)	3/52 (6%)	0.68	2.19 [0.57-8.45], p=.26 N=125	1.63 [0.49-5.43], p=.42 N=125
Left Ventricular Hypertrophy	12/52 (23%)	16/52 (31%)	0.34	0.71 [0.21-2.43], p=.58 N=125	0.51 [0.16-1.63], p=.25 N=125
Low QRS Voltage	4/52 (8%)	1/52 (2%)	0.37	6.05 [2.10-17.39], p<.001 N=125	2.70 [0.97-7.49], p=.06 N=125
P Wave Abnormality Suggestive of Left Atrial Enlargement	11/52 (21%)	9/52 (17%)	0.75	1.40 [0.53-3.71], p=.49 N=125	1.09 [0.46-2.59], p=.85 N=125
Q Waves, Pathological	8/52 (15%)	4/52 (8%)	0.22	3.40 [1.38-8.33], p=.008 N=125	2.20 [0.95-5.12], p=.07 N=125

510 **Table 3: Comparison on ECG findings in ICI-myocarditis to acute cellular rejection at**  
 511 **presentation**

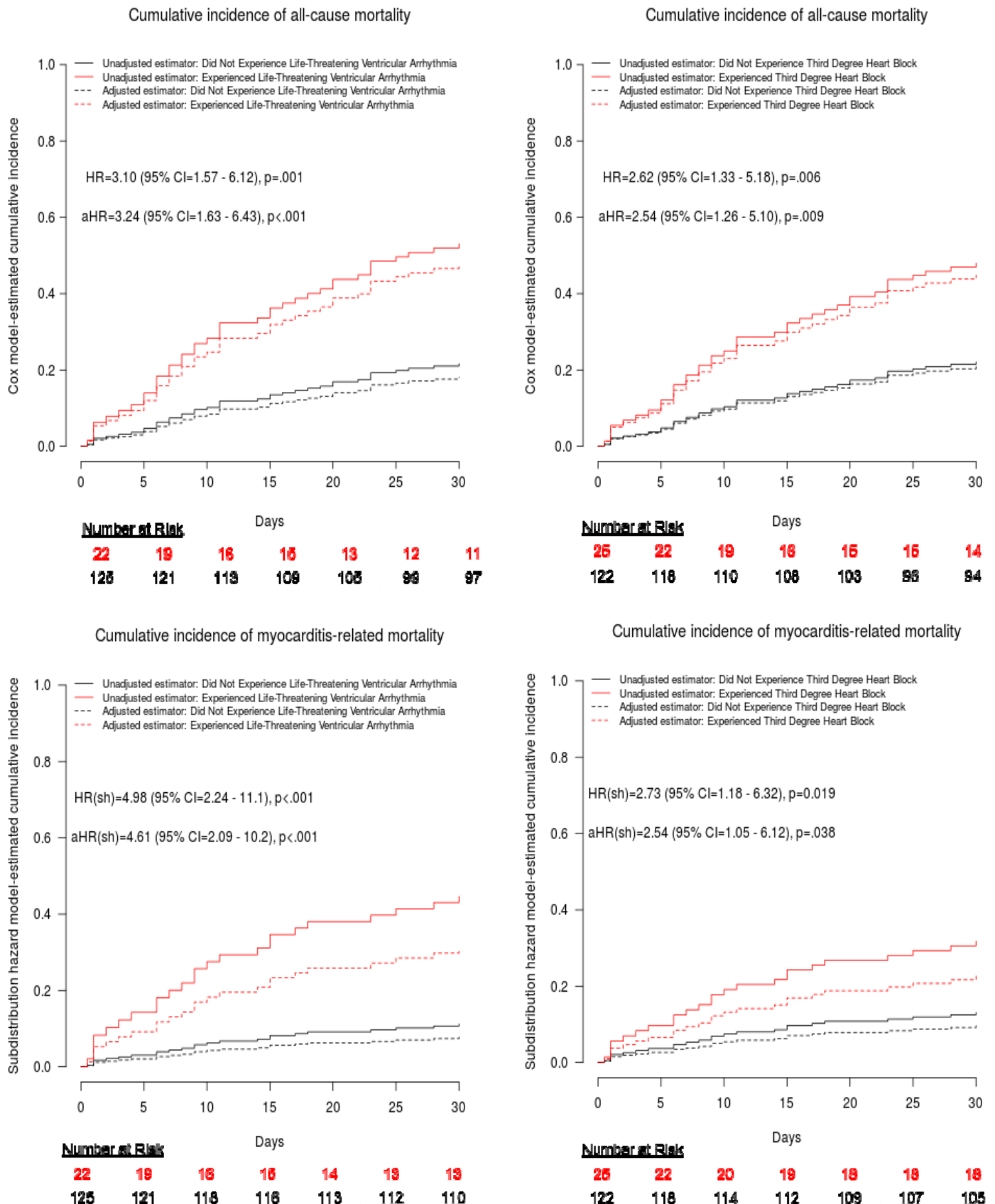
	<b>ICI-Myocarditis, Presenting ECG N=125</b>	<b>Acute Cellular Rejection 2R/3R Presenting ECG N=50</b>	
			p-value (Wilcoxon test)
Heart Rate (bpm)	87.6 [71.3-104.6] N=125	88.8 [80.4-110.2] N=50	0.20
PR Interval Length (ms)	161.3 [145.7-180.6] N=107	153.2 [136.5-166.1] N=48	<b>0.01</b>
QTcF Length (ms)	432.5 [405.4-462.1] N=122	434.1 [393.5-460.1] N=49	0.59
QRS Length (ms)	95.0 [85.3-122.3] N=125	92.8 [85.5-103.2] N=49	0.15
Sokolow-Lyon Index	1.240 [0.700-1.889] N=124	1.421 [0.889-1.845] N=50	0.40
			p-value (Chi-square test)
<b>CONDUCTION DISORDERS</b>	79/125 (63%) N=125	34/50 (68%) N=50	0.55
- Bundle Branch Block, Left Bundle	20/125 (16%) N=125	0/50 (0%) N=50	<b>0.003</b>
- Bundle Branch Block, Nonspecific	2/125 (2%) N=125	2/50 (4%) N=50	0.34
- Bundle Branch Block, Right Bundle	43/125 (34%) N=125	27/50 (54%) N=50	<b>0.02</b>
- Escape Rhythm, Ventricular	1/125 (1%) N=125	0/50 (0%) N=50	0.53
- Fascicular Block, Left Anterior	24/125 (19%) N=125	3/50 (6%) N=50	<b>0.03</b>
- Fascicular Block, Left Posterior	13/125 (10%) N=125	4/50 (8%) N=50	0.63
- Heart Block, First Degree	18/125 (14%) N=125	5/50 (10%) N=50	0.44
- Heart Block, Third Degree*	5/125 (4%) N=125	0/50 (0%) N=50	0.15

\* When multiple eligible ECG were available, ECG without complete heart block or supraventricular arrhythmias were preferentially selected for this analysis focusing on PR, QRS and QTc measurements. Please see Table 1 for cumulative incidence of arrhythmias in ICI-myocarditis and Supplemental-Table-3 for cumulative incidence of arrhythmias in ACR.

<b>ECG FINDINGS OF PERICARDITIS</b>	17/125 (14%) N=125	2/50 (4%) N=50	0.07
- PR-Segment Depression	1/125 (1%) N=125	0/50 (0%) N=50	0.53
- ST Segment Elevation, Diffuse	16/125 (13%) N=125	2/50 (4%) N=50	0.08
<b>PREMATURE VENTRICULAR COMPLEX (ALL TYPES)</b>	18/125 (14%) N=125	1/50 (2%) N=50	<b>0.02</b>
- Premature Ventricular Complex	17/125 (14%) N=125	1/50 (2%) N=50	<b>0.02</b>
- Premature Ventricular Complex Bigeminy	2/125 (2%) N=125	0/50 (0%) N=50	0.37
<b>SINUS MECHANISM</b>	107/125 (85.6%) N=125	47/50 (94%) N=50	0.08
- Sinus Tachycardia	51/125 (40.8%) N=125	21/50 (42%) N=50	0.81
<b>REPOLARIZATION ABNORMALITIES</b>	53/125 (42%) N=125	33/50 (66%) N=50	<b>0.005</b>
- ST Segment Elevation, Regional	8/125 (6%) N=125	0/50 (0%) N=50	0.07
- ST Segment Depression, Diffuse	9/125 (7%) N=125	2/50 (4%) N=50	0.43
- ST Segment Depression, Regional	7/125 (6%) N=125	3/50 (6%) N=50	0.92
- T Wave Inversions	41/125 (33%) N=125	29/50 (58%) N=50	<b>0.002</b>
- T Wave Notching	0/125 (0%) N=125	1/50 (2%) N=50	0.11
<b>SUPRAVENTRICULAR ARRHYTHMIA</b> Error! Bookmark not defined.	11/125 (9%) N=125	2/50 (4%) N=50	0.27
- Atrial Fibrillation	10/125 (8%) N=125	1/50 (2%) N=50	0.14
- Atrial Flutter	1/125 (1%) N=125	1/50 (2%) N=50	0.50
<b>UNCATEGORIZED</b>			
Premature Atrial Complex	8/125 (6%) N=125	0/50 (0%) N=50	0.07
Premature Junctional Complex	1/125 (1%) N=125	0/50 (0%) N=50	0.53
Left Ventricular Hypertrophy	21/125 (17%) N=125	10/50 (20%) N=50	0.62
Low QRS Voltage	6/125 (5%) N=125	2/50 (4%) N=50	0.82
P Wave Abnormality Suggestive of Left Atrial Enlargement	29/125 (23%) N=125	14/50 (28%) N=50	0.51
P Wave Abnormality Suggestive of Right Atrial Enlargement	4/125 (3%) N=125	10/50 (20%) N=50	<b>&lt;0.001</b>
Q-waves, Pathological	19/125 (15%) N=125	4/50 (8%) N=50	0.20
Accelerated Junctional Rhythm	1/125 (1%) N=125	0/50 (0%) N=50	0.53

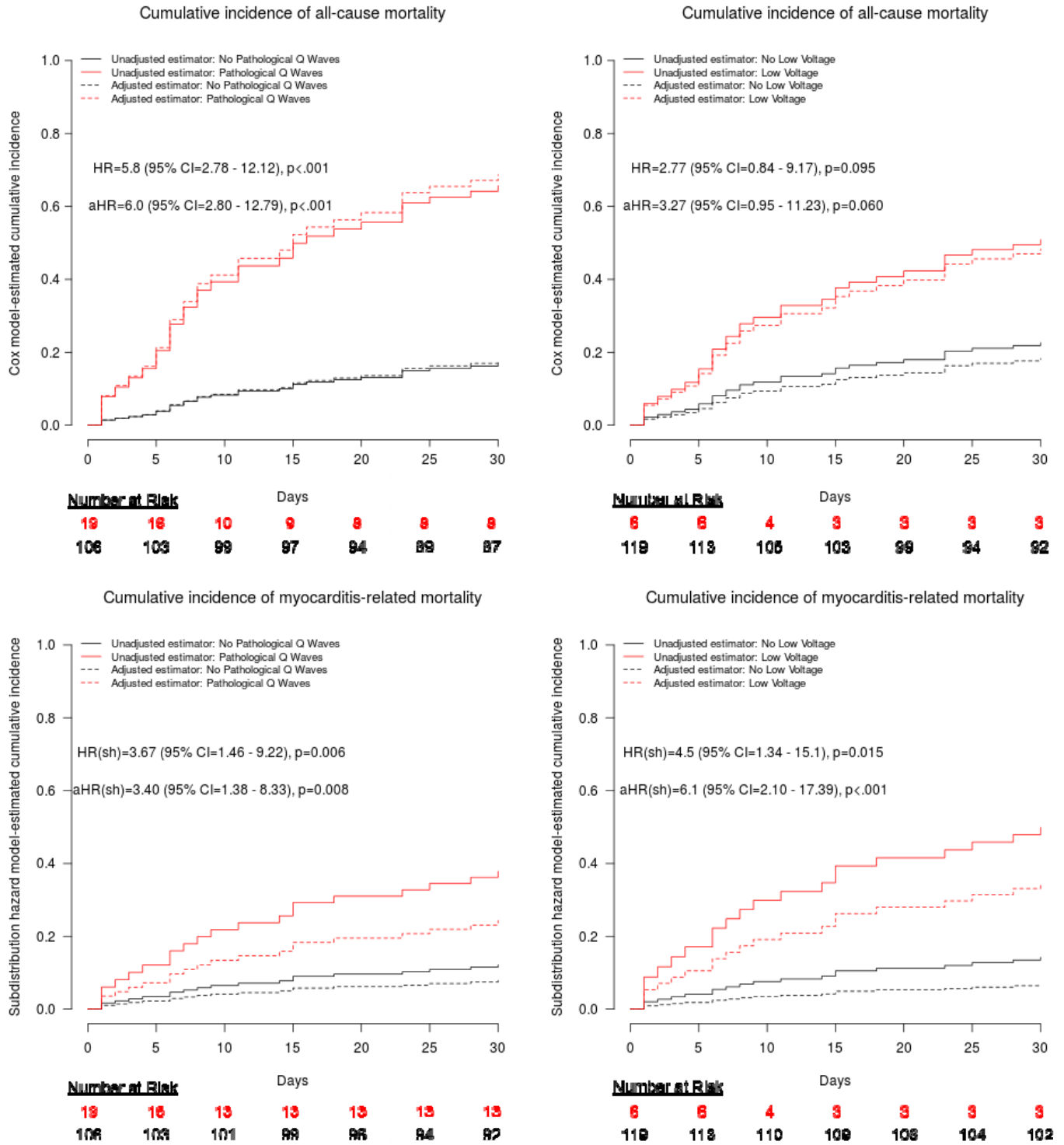
514 **Figure 1: Outcomes by cumulative incidence of arrhythmia**

515





516 **Figure 2: Outcomes by presenting ECG findings**





519 *Supplemental Data.*

520 *Supplemental Table 1. List of participating institutions*

<b>AH-HP.Sorbonne University</b> ; Paris; France - <u>Coauthors</u> : Joe-Elie Salem, Stéphane Ederhy - <u>Collaborators</u> : Charlotte Fenioux, Baptiste Abbar, Yves Allenbach
<b>Allama Iqbal Medical College</b> ; Lahore; Pakistan*
<b>Assistance publique Hôpitaux Universitaires de Marseille Nord</b> ; Paris ; France - <u>Coauthors</u> : Jennifer Cautela, Franck Thuny
<b>Barts Health NHS Trust</b> ; London; United Kingdom - <u>Collaborators</u> : Shanthini M Crusz, Arjun K Ghosh
<b>Basaksehir Cam and Sakura State Hospital</b> ; Istanbul; Turkey - <u>Coauthors</u> : Benay Ozbay
<b>Baylor College of Medicine</b> ; Houston; USA - <u>Collaborators</u> : Tyler Moran
<b>Beth Israel Deaconess Medical Center</b> ; Boston; USA - <u>Coauthors</u> : Aarti Asnani - <u>Collaborators</u> : Tyler Meheghan
<b>Brigham &amp; Women's Hospital</b> ; Boston; USA*
<b>Cedars-Sinai Medical Center</b> ; Los Angeles; USA - <u>Collaborators</u> : Lawrence Piro
<b>Chibaken Saiseikai Narashino Hospital</b> ; Funabashi; Japan*
<b>Chi-Mei Medical Center</b> ; Tainan ; Taiwan - <u>Collaborators</u> : Wei-Ting Chan
<b>Cleveland Clinic</b> ; Cleveland; USA - <u>Collaborators</u> : Johnny Chahine
<b>Dartmouth-Hitchcock Medical Center</b> ; Lebanon; USA - <u>Coauthors</u> : Lauren Gilstrap
<b>Emory University Hospital</b> ; Atlanta; USA*
<b>General Hospital of Chinese People's Liberation Army</b> ; Beijing; China*
<b>Georgetown University Medical Center</b> ; Washington; USA*
<b>Hartford Hospital</b> ; Hartford; USA - <u>Collaborators</u> : Ben Stringer
<b>Heidelberg University Hospital</b> ; Heidelberg; Germany - <u>Coauthors</u> : Lorenz Lehmann; Daniel Finke
<b>Hôpital Bichat</b> , Paris, France - <u>Coauthors</u> : Dimitri Arangalage <u>Collaborator</u> : Valérie Gounant
<b>Hôpital Européen Georges Pompidou</b> ; Paris; France*
<b>Hôpital Lariboisière</b> ; Paris; France - <u>Collaborators</u> : Martin Nicol
<b>Hôpital Saint-Louis</b> ; Paris, France - <u>Collaborators</u> : Barouyr Baroudjian
<b>Institut Bergonié : Centre Régional de Lutte Contre le Cancer</b> ; Bordeaux ; France - <u>Collaborators</u> : Marie-Claire Zimmer
<b>Institut de Cancérologie de l'Ouest; Saint Herblain; France</b> - <u>Collaborator</u> : Elvire Mervoyer
<b>International University of Health and Welfare Mita Hospital</b> ; Tokyo; Japan - <u>Coauthors</u> : Yuichi Tamura

\* data were collected from published cases in these institutions with no manual confirmation from for data completeness from authors

<b>McMaster University</b> ; Hamilton; Canada - <u>Collaborators</u> : Darryl Leong
<b>Nagoya University Graduate School of Medicine</b> ; Nagoya; Japan - <u>Collaborators</u> : Ryota Morimoto
<b>Nantes University Hospital</b> ; Nantes; France - <u>Collaborators</u> : Nicolas Piriou
<b>National Cancer Institute, National Institutes of Health</b> ; Bethesda; USA - <u>Collaborators</u> : Cecilia Monge
<b>National Institute of Health</b> ; Bethesda; USA - <u>Collaborators</u> : Amy Copeland
<b>Northwestern Memorial Hospital</b> ; Chicago; USA - <u>Collaborators</u> : Kambiz Ghafourian
<b>Ohio State University Wexner Medical Center</b> ; Columbus; USA - <u>Collaborators</u> : Avirup Guha, Sergey Brodsky
<b>Rabin Medical Center</b> ; Petah Tikva; Israel - <u>Collaborator</u> : Osnat Itzhaki Ben Zadok
<b>Rambam Medical Center</b> ; Haifa; Israel - <u>Collaborator</u> : Manhal Habib
<b>Roswell Park Comprehensive Cancer Center</b> ; Buffalo; USA - <u>Collaborator</u> : Grace Dy
<b>Sunnybrook Health Sciences Center</b> ; Toronto; Canada - <u>Collaborator</u> : Ellen Warner
<b>Tel Aviv Sourasky Medical Center</b> affiliated to the Sackler School of Medicine; Tel Aviv; Israel - <u>Collaborator</u> : Michal Laufer-Perl
<b>UC Davis Medical Center</b> ; Sacramento; USA - <u>Collaborator</u> : Lily Koo Lin
<b>UC San Diego Health</b> ; San Diego; USA - <u>Collaborator</u> : Ana Narezkina
<b>UCSF Medical Center</b> ; San Francisco; USA - <u>Coauthors</u> : Mandar Aras - <u>Collaborators</u> : Alan Baik
<b>Université de Caen Basse-Normandie</b> ; Caen ; France - <u>Coauthors</u> : Joachim Alexandre
<b>University of Alabama - University Medical Center</b> ; Birmingham; USA - <u>Collaborators</u> : Carrie Lenneman, Pankit Vachhani
<b>University of Michigan</b> ; Ann Arbor; USA - <u>Coauthors</u> : Salim Hayek - <u>Collaborators</u> : Tariq U Azam, Daniel Perry, Penelope Blakley
<b>University of Texas MD Anderson Cancer Center</b> - <u>Coauthors</u> : Nicolas Palaskas; Anita Deswal
<b>University of Tsukuba</b> ; Tsukuba; Japan - <u>Collaborators</u> : Kazuko Tajiri
<b>University of Washington-VA Puget Sound Health Care System</b> ; Seattle; USA *
<b>University of Wisconsin</b> ; Madison; USA - <u>Coauthors</u> : Steven Ewer - <u>Collaborators</u> : Matthew Martini
<b>Vanderbilt University Medical Center</b> ; Nashville; USA - <u>Coauthors</u> : John Power, Javid Moslehi, Arrush Choudhary, Shi Huang - <u>Collaborators</u> : Joseph Nowatzke, Olusola Ayodeji Orimoloye
<b>Yale University School of Medicine</b> ; New Haven; USA - <u>Collaborators</u> : Lauren A Baldassarre; Milan Patel

521 **Supplemental Table 2: Glossary of qualitative ECG findings by category**

<p><b>CONDUCTION DISORDERS</b></p> <ul style="list-style-type: none"><li>- Bundle Branch Block, Left (defined as QRS <math>\geq</math>120ms + broad notched or slurred R wave in I, aVL, V5 &amp; V6)<sup>36</sup></li><li>- Nonspecific or Unspecified Intraventricular Conduction Disturbance</li><li>- Bundle Branch Block, Right (defined as QRS <math>\geq</math>120ms; RSR' pattern in V1-V2; and slurred S wave in I, V6)<sup>36</sup></li><li>- Escape Rhythm, Junctional</li><li>- Escape Rhythm, Ventricular</li><li>- Fascicular Block, Left Anterior (defined as QRS &lt;120ms, qR in aVL, R-peak time <math>\geq</math>45 ms, frontal plane axis between <math>-45^\circ</math> and <math>-90^\circ</math>)<sup>36</sup></li><li>- Fascicular Block, Left Posterior (defined as QRS &lt;120ms, qR in III &amp; aVF, R-peak time <math>\geq</math>45 ms, frontal plane axis between <math>90^\circ</math> and <math>180^\circ</math>)<sup>36</sup></li><li>- Heart Block, First Degree (i.e. PR &gt; 200ms)</li><li>- Heart Block, Second Degree Type I</li><li>- Heart Block, Second Degree Type II</li><li>- Heart Block, Third Degree</li></ul>
<p><b>REPOLARIZATION ABNORMALITIES</b></p> <ul style="list-style-type: none"><li>- ST-Segment Depression, Diffuse (defined as <math>\geq</math>0.05 mV below the baseline)<sup>37</sup></li><li>- ST-Segment Depression, Regional (defined as <math>\geq</math>0.05 mV below the baseline)<sup>37</sup></li><li>- ST-Segment Elevation, Regional (defined as <math>\geq</math>0.1 mV unless in leads V2 to V3 where defined as <math>\geq</math>0.2 mV in men <math>\geq</math>40 years, <math>\geq</math>2.5 mV in men &lt; 40 years, and <math>\geq</math>0.15 mV in women)</li><li>- T Wave Inversions</li><li>- T Wave Notching in <math>\geq</math> 3 leads (defined as bifid T-wave with a notch duration between the 2 peaks <math>\geq</math>40 ms and an amplitude <math>\geq</math>0.05 mV)</li><li>- Tall T waves (defined as &gt;1 mV in precordial leads or &gt;0.5 mV in the limb leads)</li></ul>
<p><b>SINUS MECHANISM</b></p> <ul style="list-style-type: none"><li>- Sinus Bradycardia (i.e. HR &lt; 60 bpm)</li><li>- Normal Sinus Rhythm</li><li>- Sinus Tachycardia (i.e. HR &gt; 100 bpm)</li><li>- Sinus Arrhythmia</li></ul>
<p><b>ECG FEATURES SUGGESTIVE OF PERICARDITIS</b></p> <ul style="list-style-type: none"><li>- PR-Segment Depression (defined as <math>\geq</math>0.05 mV PR depression from TP segment)</li><li>- ST-Segment Elevation, Diffuse (defined as <math>\geq</math>1 mV unless in leads V2 to V3 where defined as <math>\geq</math>2 mV in men <math>\geq</math>40 years, <math>\geq</math>2.5 mV in men &lt; 40 years, and <math>\geq</math>1.5 mV in women)</li></ul>
<p><b>SUPRAVENTRICULAR ARRHYTHMIAS</b></p> <ul style="list-style-type: none"><li>- Atrial Fibrillation</li><li>- Atrial Flutter</li><li>- AV (atrioventricular) Nodal Reentrant Tachycardia</li><li>- Multifocal Atrial Tachycardia</li><li>- Junctional Tachycardia</li></ul>
<p><b>VENTRICULAR ARRHYTHMIA (ALL TYPES)</b></p> <ul style="list-style-type: none"><li>- Non-Sustained Ventricular Tachycardia (defined as 3 or more premature ventricular contractions for &lt; 30 seconds at a rate of &gt;100 beats per minute without hemodynamic collapse)</li><li>+ all LIFE-THREATENING VENTRICULAR ARRHYTHMIAS (below)</li></ul>

#### LIFE-THREATENING VENTRICULAR ARRHYTHMIA

- Sustained (i.e. duration > 30 seconds or requiring intervention due to hemodynamic compromise)  
Monomorphic Ventricular Tachycardia
- Sustained Polymorphic Ventricular Tachycardia
- Ventricular Fibrillation
- Sustained Torsade de Pointes

#### UNCATEGORIZED FEATURES

- Left Ventricular Hypertrophy (defined as sum of S wave in V1 + R wave in V5 or V6  $\geq 35$  mV or R wave in aVL  $\geq 11$  mV)
- Low QRS Voltage (defined as QRS voltage < 5 mV in the limb leads and/or < 10mV in precordial leads)
- P Wave Abnormality Suggestive Of Left Atrial Enlargement [defined as P-wave duration (120 ms or more) OR widely notched P wave (40 ms or more)]<sup>38</sup>
- P Wave Abnormality Suggestive Of Right Atrial Enlargement [defined as P wave in lead II (greater than 0.25 mV) OR P wave in V1 or V2(0.15 mV or more)]<sup>38</sup>
- Premature Atrial Complex
- Premature Junctional Complex
- Q Waves, Pathological [defined as Q-wave  $\geq 0.03$  s and  $\geq 0.1$  mV deep or QS complex in leads I, II, aVL, aVF or V4–V6 in any 2 leads of a contiguous lead grouping (I, aVL; V1–V6; II, III, aVF).a R wave  $> 0.04$  s in V1–V2 and R/S  $> 1$  with a concordant positive T wave in absence of conduction defect.]<sup>37</sup>

522

523

524 **Supplemental Table 3: Cumulative incidence of arrhythmia throughout hospital stay for 125**  
 525 **ICI-myocarditis patients in ECG features quantitative outcome analysis**  
 526 (Please refer to [Supplemental Table 2](#) for full details on diagnostic criteria and categorization of  
 527 qualitative ECG features)

	n/N (%)
<b>SINUS MECHANISM</b>	107/125 (85.6%)
- Normal Sinus Rhythm	56/125 (44.8%)
- Sinus Bradycardia	2/125 (1.6%)
- Sinus Tachycardia	55/125 (44.0%)
- Sinus Arrhythmia	1/125 (0.8%)
<b>CONDUCTION DISORDERS</b>	87/125 (69.6%)
- Bundle Branch Block, Nonspecific	8/125 (6.4%)
- Bundle Branch Block, Left Bundle	23/125 (18.4%)
- Bundle Branch Block, Right Bundle	45/125 (36.0%)
- Escape Rhythm, Ventricular	4/125 (3.2%)
- Escape Rhythm, Junctional	4/125 (3.2%)
- Fascicular Block, Left Anterior	25/125 (20.0%)
- Fascicular Block, Left Posterior	14/125 (11.2%)
- Heart Block, First Degree	19/125 (15.2%)
- Heart Block, Second Degree Type I	4/125 (3.2%)
- Heart Block, Second Degree Type II	5/125 (4.0%)
- Heart Block, Third Degree	19/125 (15.2%)
<b>ECG FINDINGS OF PERICARDITIS</b>	18/125 (14.4%)
- PR-Segment Depression	1/125 (0.8%)
- ST Segment Elevation, Diffuse	17/125 (13.6%)
<b>REPOLARIZATION ABNORMALITIES</b>	62/125 (49.6%)
- ST segment elevation, regional	13/125 (10.4%)
- ST Segment Depression, Diffuse	11/125 (8.8%)
- ST Segment Depression, Regional	8/125 (6.4%)
- Tall T Waves	1/125 (0.8%)
- T Wave Inversions	45/125 (36.0%)
- T Wave Notching	5/125 (4.0%)
<b>VENTRICULAR EXCITABILITY (PVC or Ventricular Arrhythmia)</b>	42/125 (33.6%)
<b>PREMATURE VENTRICULAR COMPLEX (ALL TYPES)</b>	33/125 (26.4%)
- Premature Ventricular Complex	31/125 (24.8%)
- Premature Ventricular Complex Bigeminy	5/125 (4.0%)
- Premature Ventricular Complex Trigeminy	1/125 (0.8%)
<b>VENTRICULAR ARRHYTHMIAS (all types)</b>	18/125 (14.4%)
- Ventricular Tachycardia, Non-Sustained	9/125 (7.2%)
- Ventricular Tachycardia, Sustained	9/125 (7.2%)
<b>LIFE-THREATENING VENTRICULAR ARRHYTHMIA</b>	15/125 (12.0%)
- Asystole	4/125 (3.2%)
- Pulseless Electrical Activity	4/125 (3.2%)

- Ventricular Fibrillation	4/125 (3.2%)
- Ventricular Tachycardia Unspecified Morphology, Sustained	5/125 (4.0%)
- Ventricular Tachycardia Monomorphic, Sustained	5/125 (4.0%)
- Ventricular Tachycardia Polymorphic, Sustained	1/125 (0.8%)
- Ventricular Tachycardia Torsade de Pointes, Sustained	2/125 (1.6%)
<b>SUPRA-VENTRICULAR ARRHYTHMIAS</b>	30/125 (24.0%)
- Atrial Fibrillation	26/125 (20.8%)
- Atrial Flutter	2/125 (1.6%)
- Multifocal Atrial Tachycardia	2/125 (1.6%)
- AV Nodal Reentrant Tachycardia	2/125 (1.6%)
- Junctional Tachycardia	0/125 (0.0%)
<b>UNCATEGORIZED</b>	
Accelerated Idioventricular Rhythm	3/125 (2.4%)
Accelerated Junctional Rhythm	1/125 (0.8%)
Left Ventricular Hypertrophy	22/125 (17.6%)
Low QRS Voltage	12/125 (9.6%)
Q-Waves, Pathological	22/125 (17.6%)
P Wave Abnormality Suggestive of Left Atrial Enlargement	29/125 (23.2%)
P Wave Abnormality Suggestive of Right Atrial Enlargement	4/125 (3.2%)
Premature Atrial Complex	14/125 (11.2%)
Premature Junctional Complex	2/125 (1.6%)
Sinus Arrest / Sinus Pause	2/125 (1.6%)
Placement of a Pacemaker and/or Defibrillator Within 30 days	19/124 (15.3%)
In-Hospital Mortality	33/125 (26.4%)
30-Day All-Cause Mortality	30/124 (24.2%)
30-Day Myocarditis-Related Mortality or Life-Threatening Ventricular Arrhythmia	28/124 (22.6%)
<b>Cause of Death (of 30 patients with 30d all-cause mortality)</b>	
Myocarditis	20/30 (66.7%)
Cancer Progression	6/30 (20%)
Immune Related Adverse Event Other Than Cardiotoxicity*	6/30 (20%)
- Non-Cardiac Myotoxicities Including Myasthenia Gravis-Like Syndrome Associated with Diaphragmatic Failure	5/6 (83%)
- Thrombocytopenia, Immune Related	1/6 (17%)
Sepsis	4/30 (13%)
Thromboembolic Event	2/30 (7%)
Hemorrhage	1/30 (3%)
Respiratory Failure (Other Than Diaphragmatic Failure)†	2/30 (7%)
- Pulmonary Infection	1/2 (50%)
- Acute Respiratory Distress Syndrome	1/2 (50%)
Ischemic Stroke	1/30 (3%)
Unknown	1/30 (3%)

\* note more than one cause may contribute to death

† note more than one cause may contribute to respiratory failure



528 **Supplemental Table 4: Presenting ECG of ICI-myocarditis as predictors of all-cause mortality,**  
 529 **myocarditis-related mortality, and composite outcome using unadjusted survival analyses**  
 530

	<b>Subdistribution Hazards Model For 30d Myocarditis-Related Mortality</b>	<b>Subdistribution Hazards Model For 30d Composite Outcome</b>	<b>Cox Proportional Hazard Model For 30d All-Cause Mortality</b>
	<b>unadjusted HR(sh) (95%CI) p-value</b>	<b>unadjusted HR(sh) (95%CI) p-value</b>	<b>unadjusted HR (95%CI) p-value</b>
Heart Rate (bpm)	1.01 [0.99-1.03], p=.35 N=125	1.01 [0.99-1.02], p=.40 N=125	1.00 [0.99-1.02], p=.70 N=125
PR Length (ms)	1.00 [0.98-1.02], p=.97 N=107	1.00 [0.99-1.01], p=.76 N=107	1.00 [0.99-1.01], p=.91 N=107
QTcF Length (ms)	1.00 [0.99-1.01], p=.66 N=122	1.00 [0.99-1.01], p=.52 N=122	1.01 [1.00-1.01], p=.22 N=122
QRS Length (ms)	1.01 [0.99-1.02], p=.51 N=125	1.01 [1.00-1.02], p=.11 N=125	1.00 [0.99-1.02], p=.51 N=125
Sokolow-Lyon Index (mV)	0.55 [0.28-1.06], p=.08 N=124	<b>0.51 [0.30-0.87], p=.01 N=124</b>	<b>0.59 [0.35-0.98], p=.04 N=124</b>
<b>CONDUCTION DISORDERS*</b>			
<b>DISORDERS*</b>	1.84 [0.68-5.00], p=.23 N=125	<b>3.05 [1.20-7.76], p=.02 N=125</b>	1.68 [0.75-3.76], p=.21 N=125
Bundle Branch Block, Left Bundle	0.9 [0.27-2.99], p=.87 N=125	1.47 [0.62-3.52], p=.38 N=125	1.06 [0.40-2.76], p=.91 N=125
Bundle Branch Block, Right Bundle	1.67 [0.7-3.99], p=.25 N=125	<b>2.16 [1.05-4.47], p=.04 N=125</b>	1.54 [0.75-3.17], p=.24 N=125
Fascicular Block, Left Anterior	1.47 [0.54-4.04], p=.45 N=125	1.79 [0.81-3.96], p=.15 N=125	0.84 [0.32-2.20], p=.73 N=125
Fascicular Block, Left Posterior	1.48 [0.47-4.69], p=.5 N=125	1.60 [0.55-4.69], p=.39 N=125	1.25 [0.44-3.58], p=.68 N=125
Heart Block, First Degree	1.58 [0.53-4.74], p=.41 N=125	1.87 [0.75-4.68], p=.18 N=125	0.94 [0.33-2.68], p=.90 N=125
<b>Ecg Findings Of Pericarditis</b>			
ST Segment Elevation, Diffuse	0.68 [0.16-2.84], p=.59 N=125	1.08 [0.38-3.07], p=.89 N=125	0.67 [0.20-2.22], p=.52 N=125
ST Segment Elevation, Diffuse	0.73 [0.17-3.06], p=.67 N=125	1.16 [0.41-3.32], p=.78 N=125	0.73 [0.22-2.40], p=.60 N=125
<b>PREMATURE VENTRICULAR COMPLEX (ALL TYPES)</b>			
Premature Ventricular Complex	1.56 [0.53-4.56], p=.42 N=125	1.75 [0.73-4.22], p=.21 N=125	1.21 [0.46-3.16], p=.70 N=125
Premature Ventricular Complex	1.13 [0.34-3.74], p=.84 N=125	1.41 [0.56-3.55], p=.46 N=125	0.95 [0.33-2.72], p=.93 N=125
<b>SINUS MECHANISM</b>			
Normal Sinus Rhythm	0.55 [0.21-1.48], p=.24 N=125	0.68 [0.28-1.62], p=.38 N=125	0.77 [0.31-1.87], p=.56 N=125
Normal Sinus Rhythm	0.39 [0.14-1.05], p=.06 N=125	0.56 [0.26-1.21], p=.14 N=125	0.58 [0.27-1.23], p=.15 N=125
Sinus Tachycardia	1.62 [0.68-3.84], p=.28 N=125	1.39 [0.67-2.88], p=.38 N=125	1.46 [0.71-3.00], p=.30 N=125
<b>REPOLARIZATION ABNORMALITIES</b>			
ST Segment Depression, Diffuse	1.38 [0.58-3.29], p=.47 N=125	1.39 [0.67-2.88], p=.37 N=125	1.44 [0.70-2.94], p=.32 N=125
ST Segment Depression, Diffuse	0.68 [0.09-4.95], p=.70 N=125	0.45 [0.06-3.25], p=.43 N=125	1.64 [0.50-5.41], p=.42 N=125
ST Segment Depression, Regional	0.94 [0.11-7.73], p=.95 N=125	1.37 [0.33-5.68], p=.67 N=125	0.59 [0.08-4.33], p=.61 N=125
T Wave Inversions	1.74 [0.73-4.15], p=.21 N=125	1.34 [0.64-2.80], p=.44 N=125	1.43 [0.69-2.97], p=.34 N=125
<b>SUPRAVENTRICULAR ARRHYTHMIA†</b>			
Atrial Fibrillation†	2.86 [1.00-8.2], p=.05 N=125	2.40 [1.00-5.75], p=.05 N=125	2.24 [0.86-5.85], p=.10 N=125
Atrial Fibrillation†	2.25 [0.66-7.64], p=.19 N=125	2.06 [0.76-5.54], p=.15 N=125	1.93 [0.67-5.54], p=.22 N=125
<b>UNCATEGORIZED</b>			
Premature Atrial Complex	2.84 [0.91-8.85], p=.07 N=125	1.76 [0.61-5.09], p=.29 N=125	1.74 [0.53-5.75], p=.36 N=125
Left Ventricular Hypertrophy	0.87 [0.26-2.95], p=.82 N=125	0.55 [0.17-1.77], p=.32 N=125	0.52 [0.16-1.71], p=.28 N=125
Low QRS Voltage	<b>4.50 [1.34-15.12], p=.02 N=125</b>	2.57 [0.90-7.28], p=.08 N=125	2.77 [0.84-9.17], p=.10 N=125
P Wave Abnormality Suggestive of Left Atrial Enlargement	1.36 [0.54-3.40], p=.51 N=125	1.14 [0.49-2.67], p=.76 N=125	0.94 [0.41-2.20], p=.89 N=125
P Wave Abnormality Suggestive of Right Atrial Enlargement	N/A	N/A	0.01 [0-66336310], p=.67 N=125
Q Waves, Pathological	<b>3.67 [1.46-9.22], p=.006 N=125</b>	2.10 [0.90-4.89], p=.09 N=125	<b>5.80 [2.78-12.12], p&lt;.001 N=125</b>

\* When multiple eligible ECG were available, ECG without complete heart block or supraventricular arrhythmias were preferentially selected for this analysis focusing on PR, QRS and QTc measurements. Please see Table 1 for cumulative incidence of arrhythmias in ICI-myocarditis and Supplemental-Table-3 for cumulative incidence of arrhythmias in ACR.

531 *Supplemental Table 5: Presenting ECG of ICI-myocarditis as predictors of all-cause mortality*  
 532 *using survival analyses adjusted for age and sex*

	<b>Cox Proportional Hazards Model For 30d All-Cause Mortality: HR [95% CI], P-Value*</b>
Heart Rate (bpm)	1.01 [0.99-1.02], p=.40 N=125
PR Length (ms)	1.00 [0.99-1.01], p=.55 N=107
QTcF Length (ms)	1.00 [1.00-1.01], p=.36 N=122
QRS Length (ms)	1.00 [0.99-1.01], p=.90 N=125
Sokolow-Lyon Index (mV)	<b>0.57 [0.34-0.94], p=.03 N=124</b>
<b>CONDUCTION DISORDERS<sup>†</sup></b>	1.56 [0.69-3.53], p=.29 N=125
- Bundle Branch Block, Left Bundle	1.00 [0.38-2.62], p=.99 N=125
- Bundle Branch Block, Right Bundle	1.48 [0.71-3.06], p=.29 N=125
- Fascicular Block, Left Anterior	0.85 [0.32-2.25], p=.75 N=125
- Fascicular Block, Left Posterior	1.34 [0.47-3.85], p=.59 N=125
- Heart Block, First Degree	0.83 [0.28-2.40], p=.72 N=125
<b>ECG Findings Of Pericarditis</b>	0.75 [0.22-2.51], p=.64 N=125
- ST Segment Elevation, Diffuse	0.83 [0.25-2.81], p=.76 N=125
<b>PREMATURE VENTRICULAR COMPLEX (ALL TYPES)</b>	1.01 [0.37-2.75], p=.99 N=125
- Premature Ventricular Complex	0.77 [0.26-2.30], p=.64 N=125
<b>SINUS MECHANISM</b>	0.77 [0.31-1.89], p=.56 N=125
- Normal Sinus Rhythm	0.50 [0.23-1.09], p=.08 N=125
- Sinus Tachycardia	1.67 [0.80-3.49], p=.17 N=125
<b>REPOLARIZATION ABNORMALITIES</b>	1.52 [0.74-3.12], p=.26 N=125
ST Segment Depression, Diffuse	1.60 [0.48-5.30], p=.44 N=125
ST Segment Depression, Regional	0.53 [0.07-3.90], p=.53 N=125
T Wave Inversions	1.49 [0.71-3.12], p=.29 N=125
<b>SUPRAVENTRICULAR ARRHYTHMIA<sup>†</sup></b>	2.21 [0.84-5.79], p=.11 N=125
- Atrial Fibrillation <sup>†</sup>	1.83 [0.63-5.27], p=.27 N=125
<b>UNCATEGORIZED</b>	
Premature Atrial Complex	1.59 [0.47-5.38], p=.46 N=125
Left Ventricular Hypertrophy	0.49 [0.15-1.61], p=.24 N=125
Low QRS Voltage	3.27 [0.95-11.23], p=.06 N=125
P Wave Abnormality Suggestive of Left Atrial Enlargement	1.10 [0.46-2.63], p=.83 N=125
P Wave Abnormality Suggestive of Right Atrial Enlargement	0.01 [0-77149830], p=.66 N=125
Q Waves, Pathological	<b>5.98 [2.8-12.79], p&lt;.001 N=125</b>

533  
534

\* Please see Table 1 for cumulative incidence of arrhythmias in ICI-myocarditis and Supplemental-Table-3 for cumulative incidence of arrhythmias in ACR.

<sup>†</sup> When multiple eligible ECG were available, ECG without complete heart block or supraventricular arrhythmias were preferentially selected for this analysis focusing on PR, QRS and QTc measurements. Please see Table 1 for cumulative incidence of arrhythmias in ICI-myocarditis and Supplemental-Table-3 for cumulative incidence of arrhythmias in ACR.



535 **Supplemental Table 6: Baseline characteristics of acute cellular rejection cohort**

	Med (IQR) N; n/N (%)
Recipient Age, Years	51 (43-62) N=50
Female Recipient	18/50 (36%)
Reason for Transplant	
- Dilated Cardiomyopathy	4/50 (8%)
- Ischemic Cardiomyopathy	18/50 (36%)
- Amyloidosis	1/50 (2%)
- Restrictive Cardiomyopathy	1/50 (2%)
- Congenital Heart Disease	4/50 (8%)
- Non-Ischemic Cardiomyopathy, Not Otherwise Specified	17/50 (34%)
- Hypertrophic Cardiomyopathy	2/50 (4%)
- Other	3/50 (6%)
Donor Age	29.0 (22.0-37.0) N=50
Female Donor	13/50 (26%)
Known Cardiac Allograft Vasculopathy	11/50 (22%)
Induction Therapy	
- Basiliximab (Simulect)	26/50 (52%)
- Thymoglobulin (ATG)	3/50 (6%)
- None	20/50 (40%)
- Other	1/50 (2%)
Background/Maintenance Immunosuppressive Regimen	
- Prednisone + Tacrolimus + Mycophenolate	42/50 (84%)
- Prednisone + Cyclosporine + Mycophenolate	3/50 (6%)
- Other	5/50 (10%)
Days from Transplant To Rejection	145 (26-283) N=50
Acute Cellular Rejection Grading Scheme <sup>21</sup>	
- 2R, Moderate	46/50 (92%)
- 3R, Severe	4/50 (8%)
Days from Transplant To ECG	145 (28-283) N=50
Days from Biopsy To ECG	0 (0-1)
30-Day All-Cause Mortality	0/50 (0%)
Placement of A Pacemaker and/or Defibrillator for ACR Related Arrhythmias Within 30 Days Of Diagnosis	0/50 (0%)
Pacemaker Without Defibrillator for ACR Related Arrhythmias Within 30 Days Of Diagnosis	0/50 (0%)
Admitted During or As A Result Of ACR	29/50 (58.0%)
Length of Stay (Days) <sup>‡</sup>	12 (5-21) N=29
Reduced LVEF At Admission Or During Hospital Stay For ACR (Excluding Pre-Transplant LVEF)*	4/28 (14.3%)
In-Hospital Mortality*	0/29 (0%)
<b>Arrhythmias at Any Point During Hospitalization (If Applicable) Or At Presenting ECG (Please Refer To <a href="#">Supplemental Table 2</a> For Criteria / Classification)</b>	
Supraventricular Arrhythmia <sup>§</sup>	6/50 (12%)
- Atrial Fibrillation	3/50 (6%)

<sup>‡</sup> This refers to the subset of admitted patients

- Atrial Flutter	2/50 (4%)
- Multifocal Atrial Tachycardia	1/50 (2%)
Conduction Disorder <sup>§</sup>	34/50 (68%)
- Bundle Branch or Fascicular Blocks	33/50 (66%)
- First-Degree Heart Block	6/50 (12%)
- Second-Degree Heart Block	0/50 (0%)
- Third-Degree Heart Block	0/50 (0%)
ECG Finding of Pericarditis (PR Depression Or Diffuse ST Elevations)	2/50 (4%)
Repolarization Abnormalities (ST-Segment Or T-Wave Changes)	33/50 (66%)
Premature Ventricular Complexes (Any Type)	6/50 (12%)
Ventricular Arrhythmias (Any Type; Sustained or Non-Sustained)	5/50 (10%)
Life-Threatening Ventricular Arrhythmias <sup>§</sup>	1/50 (2%)
- Asystole	0/50 (0%)
- Pulseless Electrical Activity	0/50 (0%)
- Ventricular Fibrillation	0/50 (0%)
- Ventricular Tachycardia Unspecified Morphology, Sustained	0/50 (0%)
- Ventricular Tachycardia Monomorphic, Sustained	1/50 (2%)
- Ventricular Tachycardia Polymorphic, Sustained	0/50 (0%)
- Ventricular Tachycardia Torsade De Pointes, Sustained	0/50 (0%)
Third-Degree Heart Block and/or Life-Threatening Ventricular Arrhythmia	1/50 (2%)

536

537

---

<sup>§</sup> this category includes rhythms below, note that patients may experience more than one of these rhythms

538 **Supplemental Data Methods 1: Systematic review search terms**

539 Pubmed, Scopus, and Google Scholar were queried for case reports published between 1/1/2008  
540 and 5/21/2019 with the search terms myocarditis, cardiotoxicity or cardiac toxicity in addition to  
541 (AND) at least one of the following: immune checkpoint inhibitor, pembrolizumab, ipilimumab,  
542 nivolumab, avelumab, atezolizumab, durvalumab, tremelimumab, anti-CTLA-4, anti-PD-L1,  
543 anti-PD-1, CTLA-4 inhibitor, PD-L1 inhibitor, OR PD-1 inhibitor.

544  
545  
546  
547  
548

549 **Supplemental Data Methods 2: ECG interval measurement**

550 The QT interval was measured using the tangent method from the beginning of the QRS  
551 complex to the end of the T-wave. Lead II was preferentially used, but when unsuitable, V5 and  
552 V6 were used. The average of three consecutive PQRST complexes was used for each interval's  
553 measurements. PVCs were excluded. In the rare cases in which three consecutive complexes  
554 were not available, two complexes were used. The heart rate corrected QT interval (QTc)  
555 was calculated using Bazett's ( $QTcB = QT \text{ interval} / \sqrt{RR \text{ interval}}$ ) and Fredericia's formula ( $QTcF = QT$   
556  $\text{interval} / (RR \text{ interval})^{1/3}$ ).

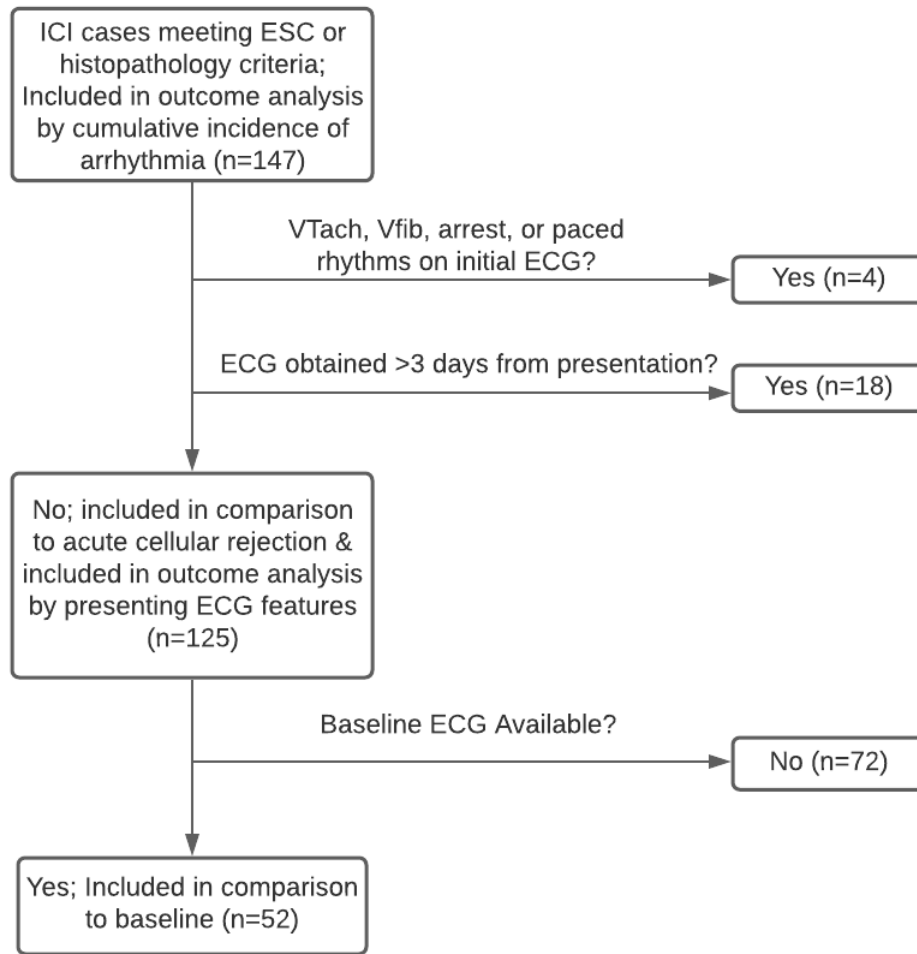
557

558 **Figure: ECG measurement with EP Calipers application (note that values used were an**  
559 **average of measurements across three consecutive PQRST complexes)**

560  
561  
562  
563  
564  
565  
566  
567  
568  
569

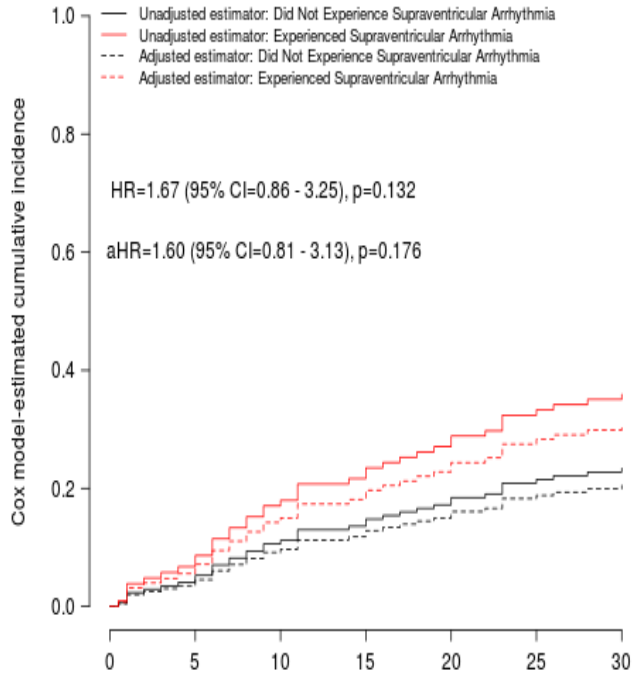


570 **Supplemental Figure 1: Flowchart**



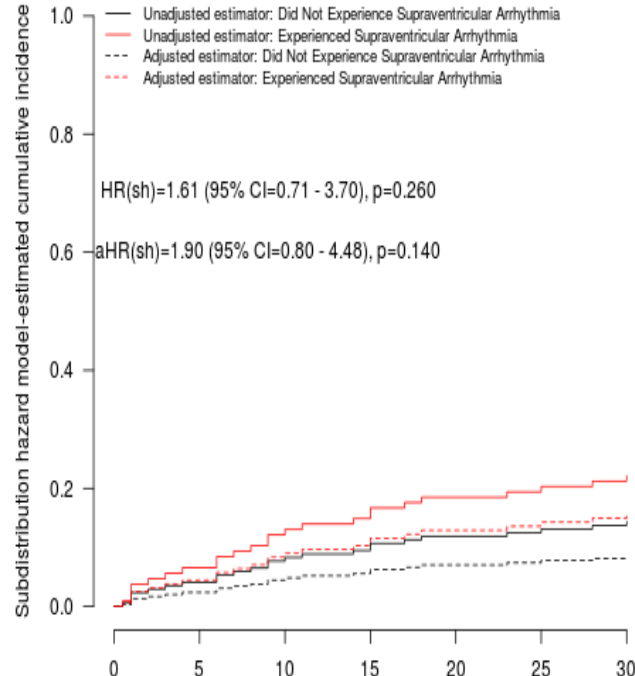
571  
572  
573

Cumulative incidence of all-cause mortality



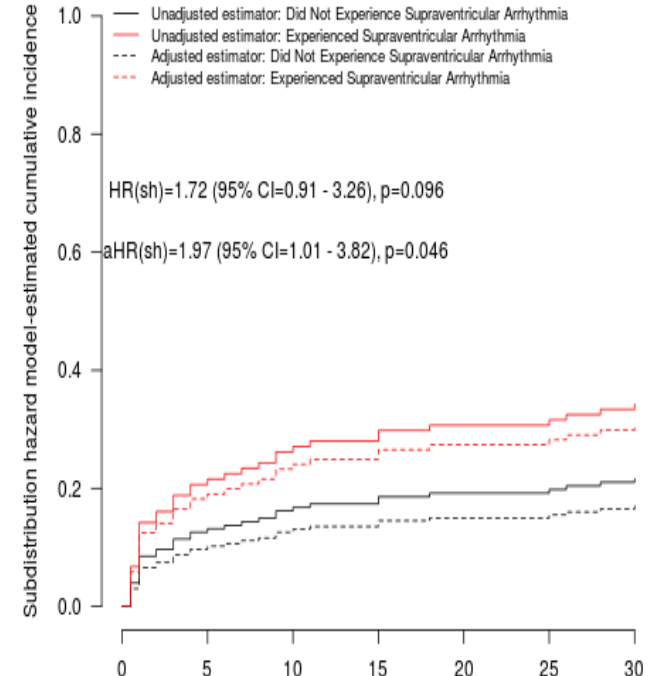
Number at Risk		Days						
		0	5	10	15	20	25	30
35	35	29	28	28	24	22		
112	106	100	96	92	87	86		

Cumulative incidence of myocarditis-related mortality



Number at Risk		Days						
		0	5	10	15	20	25	30
35	35	31	30	29	29	27		
112	106	103	101	98	96	96		

Cumulative incidence of myocarditis-related mortality or life-threatening ventricular arrhythmia



Number at Risk		Days						
		0	5	10	15	20	25	30
35	31	27	28	25	25	22		
112	94	92	91	80	88	88		

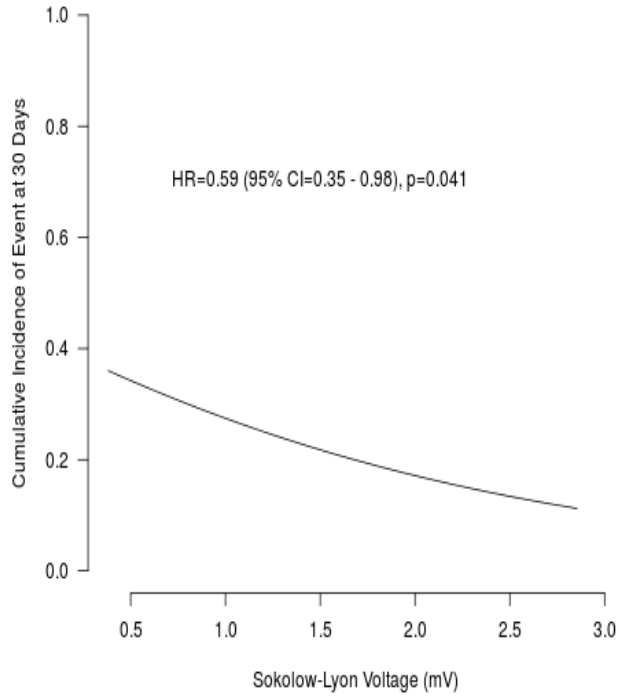
575 **Supplemental Figure 3: Model-estimated Cumulative Incidence of Event at 30-day by Sokolow-Lyon Index**

576

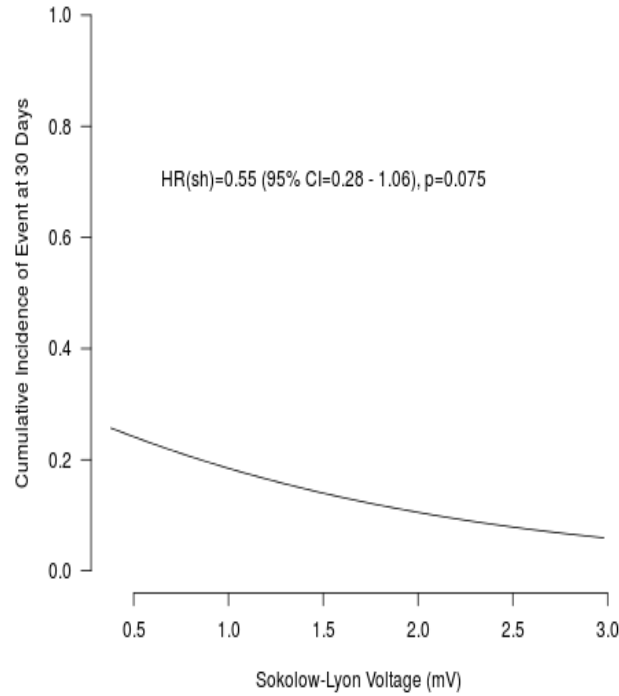
577

578

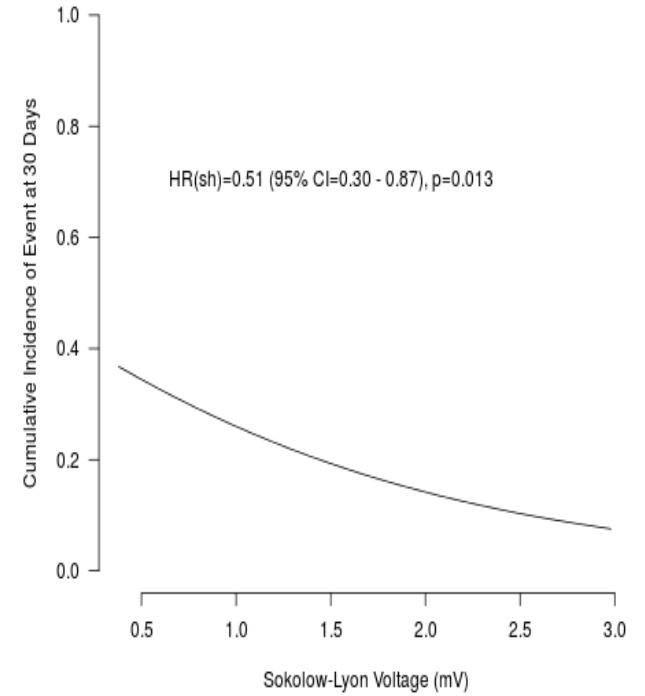
Cox Regression by Sokolow-Lyon Voltage: All-Cause Mortality



Subdistribution Hazard Regression by Sokolow-Lyon Voltage: Myocarditis-Related Mortality



Subdistribution Hazard Regression by Sokolow-Lyon Voltage: Myocarditis-Related Mortality or Life-Threatening Ventricular Arrhythmia



579 *Supplemental Figure 4: Cumulative incidence function by presenting ECG findings (composite outcome)*

580

