

1 **The accuracy of novel antigen rapid diagnostics for SARS-CoV-2: a living systematic review**
2 **and meta-analysis.**

3

4 Lukas E. Brümmer^{1*}, Stephan Katzenschlager^{2*}, Mary Gaedert¹, Christian Erdmann³, Stephani
5 Schmitz¹, Marc Bota⁴, Maurizio Grilli⁵, Jan Larmann², Markus A. Weigand², Nira R. Pollock⁶, Sergio
6 Carmona⁷, Stefano Ongarello⁷, Jilian Sacks⁷, Claudia M. Denkinge¹

7

8 * These authors contributed equally

9

10 1) Division of Tropical Medicine, Center for Infectious Diseases, Heidelberg University Hospital, Hei-
11 delberg, Germany

12 2) Department of Anesthesiology, Heidelberg University Hospital, Heidelberg, Germany

13 3) FH Muenster University of Applied Sciences, Muenster, Germany

14 4) Agaplesion Bethesda Hospital, Hamburg, Germany

15 5) Library of the Medical Faculty Mannheim, Heidelberg University, Mannheim, Germany

16 6) Department of Laboratory Medicine, Boston Children's Hospital, Boston, MA USA

17 7) Foundation of Innovative New Diagnostics, FINDdx, Geneva, Switzerland

18

19

20 Keywords: SARS-CoV-2; Antigen Test; PCR; meta-analysis;

21 Running Title: Meta-Analysis: Rapid antigen tests for SARS-CoV-2

22

23 **Corresponding author:**

24 Claudia M. Denkinge

25 Division of Tropical Medicine, Center for Infectious Diseases, Heidelberg University Hospital, Heidel-
26 berg, Germany

27 Claudia.Denkinge@uni-heidelberg.de

28 +49 6221 56 36637

29

30 Summary: In this living systematic review we analyzed 98 data sets for performance of SARS-CoV-2
31 Ag-RDTs compared to RT-PCR. Best-performing tests achieved a sensitivity of 81.7%. Highest sensitiv-
32 ity was found in patients within seven days of symptom onset when NP swabs were utilized.

33 **ABSTRACT**

34

35 Background: SARS-CoV-2 antigen rapid diagnostic tests (Ag-RDTs) are increasingly being inte-
36 grated in testing strategies around the world. Studies of the Ag-RDTs have shown variable perfor-
37 mance. In this systematic review and meta-analysis, we assessed the clinical accuracy (sensitivity and
38 specificity) of commercially available Ag-RDTs.

39 Methods: We registered the review on PROSPERO (Registration number: CRD42020225140). We
40 systematically searched multiple databases (PubMed, Web of Science Core Collection, medRxiv and
41 bioRxiv, FINDdx) for publications up until December 11th, 2020. Descriptive analyses of all studies
42 were performed and when more than four studies were available, a random-effects meta-analysis
43 was used to estimate pooled sensitivity and specificity in comparison to reverse transcriptase poly-
44 merase chain reaction testing. We assessed heterogeneity by subgroup analyses ((1) performed con-
45 form with manufacturer's instructions for use (IFU) or not, (2) symptomatic vs. asymptomatic, (3)
46 duration of symptoms less than seven days vs. more than seven days, (4) Ct-value <25 vs. <30 vs.
47 ≥30, (5) by sample type)) and with meta-regression. We assessed study quality and risk of bias using
48 the QUADAS 2 assessment tool.

49 Results: From a total of 11,715 articles, we extracted 98 analytical and clinical data sets. 74 clini-
50 cal accuracy data sets were evaluated that included 31,202 samples. Across all meta-analyzed sam-
51 ples, the pooled Ag-RDT sensitivity was 73.8% (CI 68.6 to 78.5). If analysis was restricted to studies
52 that followed the Ag-RDT manufacturers' instructions using fresh upper respiratory swab samples,
53 the sensitivity increased to 79.1% (95%CI 75.0 to 82.8). The SD Biosensor Standard Q and Abbott
54 Panbio showed the highest sensitivity with 81.7% and 72.7%, respectively. The best Ag-RDT perfor-
55 mance was found with nasopharyngeal sampling (77.3%, CI 72.0 to 81.9) in comparison to other
56 sample types (e.g., anterior nasal or mid turbinate 63.5%, CI 49.5 to 75.5). Testing in the first week
57 from symptom onset resulted in higher sensitivity (87.5%, CI 86.0 to 89.1) compared to testing after
58 one week (64.1%, CI 54.4 to 73.8). The tests performed markedly better on samples with lower Ct-
59 values, i.e., <30 (87.9%, CI 86.7 to 88.8), in comparison to those with Ct ≥ 30 (47.8%, CI 41.1 to 54.5).
60 Bias concerns were raised across all data sets, and financial support from the manufacturer was re-
61 ported in 28.2% of data sets.

62 Conclusion: As Ag-RDTs detect most cases within the first week of symptom onset and those
63 with high viral load, they can have high utility for screening purposes in the early phase of disease,
64 and thus can be a valuable tool to fight the spread of SARS-CoV-2. Standardization of conduct and
65 reporting of clinical accuracy studies would improve comparability and use of data.

66 **ABBREVIATIONS**

67	Ag-RDT	= antigen rapid diagnostic test
68	AN/MT	= anterior nasal or midturbinate
69	AR	= Aruba
70	BAL/TW	= bronchoalveolar lavage or throat wash
71	CI	= confidence interval
72	Ct-value	= cycle threshold value
73	ER	= Emergency Room
74	FINDdx	= Foundation for Innovative New Diagnostics
75	FP	= false positive
76	FN	= false negative
77	IFU	= instructions for use
78	LRT	= lower respiratory tract
79	N	= sample size
80	NP	= nasopharyngeal
81	OP	= oropharyngeal
82	POC	= point of care
83	PC	= professional-collected
84	RT-PCR	= reverse transcriptase polymerase chain reaction
85	SC	= self-collected
86	TP	= true positive
87	TR	= travelers
88	TN	= true negative
89	UT	= Utrecht
90	VTM/UTM	= viral or universal transport medium

91 **INTRODUCTION**

92 As the COVID-19 pandemic continues around the globe, antigen rapid diagnostic tests (Ag-RDTs)
93 for SARS-CoV-2 are seen as a complimentary to fight the virus' spread (1). The number of Ag-RDTs on
94 the market is increasing constantly (2). Initial data from independent evaluations suggests that the
95 performance of SARS-CoV-2 Ag-RDTs may be lower than what is reported by the manufacturers. In
96 addition, Ag-RDT accuracy seems to vary substantially between tests (3-5).

97 With the increased availability of Ag-RDTs, an increasing number of independent validations
98 have been published. Such evaluations differ widely in their quality, methods and results, making it
99 difficult to assess the true performance of the respective tests (6). To inform decision makers on the
100 best choice of individual tests, an aggregated, widely available and frequently updated assessment of
101 the quality, performance and independence of the data is urgently necessary. While other systematic
102 reviews have been published, they only include data up until May 2020 (7-9), exclude preprints (10),
103 or were industry sponsored (11). In addition, only one assessed the quality of studies in detail, with
104 data up until May, 2020 (6).

105 With our systematic review and meta-analysis, we aim to close this gap in the literature and link
106 to a website (www.diagnosticsglobalhealth.org) that is continuously updated.

107

108 **METHODS**

109 We developed a study protocol following standard guidelines for systematic reviews (12, 13),
110 which is available upon request. The PRISMA checklist and the study protocol are provided in the
111 Supplements (S1, S14). We also registered the review on PROSPERO (Registration number:
112 CRD42020225140).

113

114 **SEARCH STRATEGY**

115 We performed a search of the databases PubMed, Web of Science, medRxiv and bioRxiv using
116 search terms that were developed with an experienced medical librarian (MG) using combinations of

117 subject headings (when applicable) and text-words for the concepts of the search question. The main
118 search terms were “Severe Acute Respiratory Syndrome Corona-virus 2”, “COVID-19”,
119 “Betacoronavirus”, “Coronavirus” and “Point of Care Testing”. The full list of search terms is available
120 in the Supplement (S2). We also searched the FINDdx website ([https://www.finddx.org/sarscov2-
121 eval-antigen/](https://www.finddx.org/sarscov2-eval-antigen/)) for relevant studies manually. We performed the search up until December 11th, 2020.
122 No language restrictions were applied. Weekly searches are continued thereafter to update the web-
123 site (www.diagnosticsglobalhealth.org).

124

125 INCLUSION CRITERIA

126 We included studies evaluating the accuracy of commercially available Ag-RDTs to establish a
127 diagnosis of a SARS-CoV-2 infection against reverse transcriptase chain reaction (RT-PCR) or cell cul-
128 ture as reference standard. We included all study populations irrespective of age, presence of symp-
129 toms, or the study location. We considered cohort studies, nested cohort studies, case-control or
130 cross-sectional studies and randomized studies. We included both peer reviewed publications and
131 preprints.

132 We excluded studies in which patients were tested for the purpose of monitoring or ending
133 quarantine. Also, publications with a population size smaller than 10 were excluded (although the
134 size threshold of 10 is arbitrary, such small studies are more likely to give unreliable estimates of
135 sensitivity or specificity).

136

137 INDEX TESTS

138 Point of Care (POC) Ag-RDTs for SARS-CoV-2 aim to detect infection by recognizing viral pro-
139 teins. Most POC Ag-RDTs use specific labeled antibodies attached to a nitrocellulose matrix strip, to
140 capture the virus antigen. Successful binding of the antibodies to the antigen is either detected visu-
141 ally (through the appearance of a line on the matrix strip (lateral flow assay)) or requires a specific

142 reader for fluorescence detection. POC microfluidic enzyme-linked immunosorbent assays have also
143 been developed. Ag-RDTs typically provide results within 10 to 30min (5).

144

145 REFERENCE STANDARD

146 Viral culture detects viable virus that is relevant for transmission but is available in research set-
147 tings only. Since RT-PCR tests are more widely available and SARS-CoV-2 RNA (as reflected by RT-PCR
148 cycle threshold (Ct) value) highly correlates with SARS-CoV-2 antigen quantities, we considered it an
149 acceptable reference standard for the purposes of this systematic review (14).

150

151 STUDY SELECTION AND DATA EXTRACTION

152 Two reviewers (LEB and CE, LEB and SS or LEB and MB) reviewed the titles and abstracts of all
153 publications identified by the search algorithm independently, followed by a full-text review for
154 those eligible, to select the articles for inclusion in the systematic review. Any disputes were solved
155 by discussion or by a third reviewer (CMD).

156 A full list of the parameters extracted is included in the Supplement (S13) and the data extrac-
157 tion file is available upon request. Studies that assessed multiple Ag-RDTs or presented results based
158 on differing parameters (e.g., various sample types) were considered as individual data sets.

159 At first, four authors (SK, CE, SS, MB) extracted five randomly selected papers in parallel to align
160 on the extraction of data. Afterwards, data extraction as well as the assessment of methodological
161 quality and independency from test manufacturers (see below) was performed by one author per
162 paper (SK, CE, SS, MB) and controlled by a second (LEB, SK, SS, MB). Any differences were resolved by
163 discussion or by consulting a third author (CMD).

164

165 STUDY TYPES

166 We differentiated between clinical accuracy studies (performed on clinical samples) or analytical
167 accuracy studies (performed on contrived samples with known viral load). Analytical accuracy studies

168 can differ widely in methodology, impeding an aggregation of their results. Thus, while we extracted
169 the data for both kinds of studies, we only considered data from clinical accuracy studies as eligible
170 for the meta-analysis. Separately, we summarized the results of analytical studies and compared
171 them with the results of the meta-analysis for individual tests.

172

173 ASSESSMENT OF METHODOLOGICAL QUALITY

174 The quality of the clinical accuracy studies was assessed by applying the QUADAS-2 tool (15).
175 The tool evaluates four domains: patient selection, index test, reference standard, and flow and tim-
176 ing. For each domain, the risk of bias is analyzed using different signaling questions. Beyond the risk
177 of bias, the tool also evaluates the applicability of the study of each included study to the research
178 question for every domain. The QUADAS 2 tool was adjusted to the needs of this review and can be
179 found in the Supplement (S3).

180

181 ASSESSMENT OF INDEPENDENCY FROM MANUFACTURERS

182 We examined whether a study received financial support from a test manufacturer (including
183 the free provision of Ag-RDTs), whether any study author was affiliated with a test manufacturer, or
184 a respective conflict of interest was declared. Studies were judged not to be independent from the
185 test manufacturers if at least one of these aspects were found present, otherwise they were consid-
186 ered to be independent.

187

188 STATISTICAL ANALYSIS AND DATA SYNTHESIS

189 We prepared forest plots for the sensitivity and specificity of each test and visually evaluated
190 the heterogeneity between studies. If four or more data sets were available with more than 20 posi-
191 tive RT-PCR samples per data set for a predefined analysis, a meta-analysis was performed. We re-
192 port point estimates of sensitivity and specificity for SARS-CoV-2 detection compared to the refer-
193 ence standard along with 95% confidence intervals (CI) using a bivariate random effect hierarchical

194 model (implemented with the ‘metandi’ command in Stata). When there were less than four studies
195 for an index test, only a descriptive analysis only was performed and accuracy ranges were reported.
196 In sub-group analyses where papers presented data only on sensitivity, a univariate random effects
197 logistic regression model was done (using the ‘metan’ command in Stata). We predefined the follow-
198 ing subgroups for meta-analysis: by sampling and testing procedure in accordance with manufactur-
199 er’s instructions as detailed in the instructions for use (henceforth called IFU-conform) vs. non-IFU
200 conform, age (<18; ≥18), sample type, by presence or absence of symptoms, symptom duration (<7
201 days versus ≥7 days), type of RT-PCR used, and by Ct-value range. For categorization by sample type,
202 we assessed (1) nasopharyngeal (NP) alone or combined with other (e.g., oropharyngeal (OP)), (2) OP
203 alone, (3) anterior nasal or mid-turbinate (AN/MT), (4) a combination of bronchial alveolar lavage
204 and throat wash (BAL/TW) or (5) saliva.

205 We aimed to do meta-regression with the ‘mvmeta’ command in Stata to examine the impact of
206 covariates including symptom duration and Ct-value range. We also performed the Deeks’ test for
207 funnel-plot asymmetry as recommended to investigate publication bias for diagnostic test accuracy
208 meta-analyses ((16), using the ‘midas’ command in Stata); a p-value<0.10 for the slope coefficient
209 indicates significant asymmetry. Analyses were performed using Stata 15 (Stata Corporation, College
210 Station, TX, USA), and forest plots were generated using Review Manager 5.3 (Nordic Cochrane Cen-
211 tre, Copenhagen, Denmark).

212

213 SENSITIVITY ANALYSIS

214 Two types of sensitivity analyses were planned: First, estimation of sensitivity and specificity ex-
215 cluding case-control studies. Secondly, estimation of sensitivity and specificity excluding non-peer-
216 reviewed studies. We compared the results of each sensitivity analysis against overall results to as-
217 sess the potential bias introduced by considering case-control studies and non-peer reviewed stud-
218 ies.

219 DIAGNOSTICSGLOBALHEALTH.ORG

220 A summary of the data included in this paper is available on the website

221 “www.diagnosticsglobalhealth.org”. At least once per week we update this website by continuing the

222 literature search and process described above. We plan to update the meta-analysis every month

223 and post on the website.

224 **RESULTS**

225 SUMMARY OF STUDIES

226 The systematic search resulted in 11,715 articles. After removing duplicates, 5,435 articles were
227 screened, and 93 papers were considered eligible for data extraction. Of these, 41 were excluded
228 because they did not present primary data (14, 17-56), leaving 52 studies to be included in the sys-
229 tematic review (Figure 1) (3, 57-107).

230 At the end of the data extraction process, 23 studies were still in preprint form (3, 57, 60, 62,
231 63, 66, 67, 75-77, 81, 86, 89, 91, 93, 94, 96, 97, 100, 102-104, 106). All studies were written in Eng-
232 lish, except for one in Spanish. Out of the 52 studies, 48 reported on clinical accuracy (3, 57-65, 67-
233 83, 86-91, 93-107) and four on analytical accuracy (66, 84, 85, 92).

234 The 48 clinical accuracy studies were divided up in 74 data sets, while the four analytical accura-
235 cy studies accounted for 24 data sets. A total of 20 different Ag-RDTs were evaluated (15 lateral flow
236 with visual readout, five requiring an automated reader), with 18 being assessed in a clinical accuracy
237 study. Only 11 studies reported data for more than one test, and only four of these conducted a
238 head-to-head assessment, i.e., testing at least two Ag-RDTs on the same sample or participant. The
239 reference method was RT-PCR in all except one study, which used viral culture.

240 The most common reason for testing was the occurrence of symptoms (30.6% of data sets),
241 while in another 15.3% of data sets persons were screened independent of symptoms. Close contact
242 to a SARS-CoV-2 confirmed case was the reason for testing in further 5.1% of the data sets. In 8.2% of
243 the data sets, persons were tested due to more than one of the reasons mentioned before and for
244 40.8% the reason for testing was unclear.

245 In total, 32,468 Ag-RDTs were done, 31,202 in clinical accuracy studies and 1,266 in analytical
246 accuracy studies. In the clinical accuracy studies, the mean number of samples per clinical study was
247 422 (Range 17 to 4183). Only 274 tests were performed on pediatric samples and 10,154 on samples
248 from adults. For the remaining 22,040 samples, age was not specified. 18,464 samples originated
249 from symptomatic patients and 5,071 samples from asymptomatic patients. For 8,933 samples the

250 patient's symptom status could not be identified. The most common sample type evaluated was NP
251 and mixed NP/OP (22,293 samples). There were substantially fewer data points for the other sample
252 types: OP 796 samples and AN/MT 6,496 samples.

253 Of the data sets assessing clinical accuracy, 39.2% performed testing according to the manufac-
254 turers' recommendations (i.e., IFU-conform), while 58.1% were not IFU-conforming. The most com-
255 mon deviations from the IFU were (1) a sample type that was not recommended for Ag-RDTs (28
256 (37.8%) data sets; 2 (2.7%) not known), (2) use of samples that were prediluted in transport media
257 not recommended by the manufacturer (26 (35,1%) data sets; 9 (12,2%) not known) and (3) use of
258 banked samples (21 (28.4%) data sets; 12 (16.2%) not known).

259 A summary of the clinical accuracy data by study, including the test(s) evaluated, sample size,
260 sample type, sample condition and IFU conformity, can be found in Table 1. Most data sets were
261 available for the Panbio test by Abbott Rapid Diagnostics (Germany; henceforth called Panbio): 21
262 data sets and 15,809 tests; while Standard Q test by SD Biosensor (South Korea; distributed in Europe
263 by Roche, Germany; henceforth called Standard Q) was assessed in 16 data sets with 6036 tests per-
264 formed. Detailed results for each clinical accuracy study are available in the Supplement (S 4).

265

266 METHOLOGICAL QUALITY OF STUDIES

267 The findings on study quality using the QUADAS 2 tool are presented in Figure 2. Most studies
268 assessed a relevant patient population (73.0%). However, for only 31.1% of the studies the patient
269 selection was considered representative of the setting and population chosen (i.e., they avoided in-
270 appropriate exclusions, a case-control design and enrollment occurred consecutive or randomly).

271 The conduct and interpretation of the index tests was considered to have low risk for introduc-
272 tion of bias in 45.9% of studies (through e.g., appropriate blinding of persons interpreting the visual
273 read-out). However, 51.4% of studies did not provide sufficient information to clearly judge the risk
274 of bias. Only a subset of studies performed the Ag-RDTs according to IFU (39.2% of studies), while

275 58.1% were non-IFU conforming, which potentially affected the accuracy negatively (for 2.7% of
276 studies it was unclear).

277 For half of the data sets (51.4%) the reference standard was performed ahead of the Ag-RDT or
278 the operator conducting the Ag-RDT was blinded to its results, which resulted in a low risk of bias.
279 However, almost half (47.3%) did not report sufficient information to judge the risk and one study
280 specifically stated to have performed the reference standard not blinded to the Ag-RDT results.
281 Nonetheless, the applicability of the reference test was judged to be of low concern for all studies, as
282 cell culture or RT-PCR are expected to adequately define the target condition.

283 Most studies (67.6%) obtained the sample for the index test and reference test at the same
284 time and applied the same reference standard across the samples. However, for 8.1% of data sets,
285 we were concerned that not all selected patients were included in the analysis.

286 Financial support from the Ag-RDT manufacturer was found in 28.2% of the data sets. Five per-
287 cent of the authors reported a conflict of interest and another five percent indicated employment by
288 the manufacturer of the Ag-RDT studied.

289

290 DETECTION OF SARS-COV-2 INFECTION

291 Out of 74 clinical data sets (from 48 studies), ten were excluded from the meta-analysis, as they
292 included less than 20 RT-PCR positive samples. Across the remaining 64 data sets, including any test
293 and type of sample, the meta-analyzed sensitivity and specificity were 73.8% (95%CI 68.6 to 78.5)
294 and 99.7% (95%CI 99.3 to 99.9). If testing was performed IFU-conform, sensitivity increased to 79.1%
295 (95%CI 75.0 to 82.8) compared to non-IFU conform testing with a respective sensitivity of 68.5%
296 (95%CI 58.4 to 77.2). Pooled specificity was the same in both groups (99.7% vs. 99.6%).

297

298 ANALYSIS OF SPECIFIC TESTS

299 Based on 47 out of the 64 clinical data sets with 24,543 tests performed, we were able to meta-
300 analyze the sensitivity and specificity of five different Ag-RDTs: Standard Q, Panbio, the Standard F by

301 Biosensor (South Korea; henceforth called Standard F), the COVID-19 Ag Respi-Strip by Coris
302 BioConcept (Belgium, henceforth called Coris) and the Biocredit Covid-19 Antigen rapid test kit by
303 RapiGEN (South Korea; henceforth called Rapigen). Across these, pooled estimates of sensitivity and
304 specificity on all samples were 73.1% (95%CI 67.1 to 78.3) and 99.7% (95% CI 99.2 to 99.9), which
305 were very similar to the overall pooled estimate across all meta-analyzed data sets (73.8% and
306 99.7%, above).

307 Standard Q had the highest pooled estimate of sensitivity with 81.7% (95% CI 74.8 to 87.0). The
308 pooled sensitivity for Standard F and Panbio were 70.9% (95% CI 52.0 to 84.6) and 72.7% (95%CI 63.7
309 to 80.2), respectively. Coris and Rapigen only reached a pooled sensitivity of 41.9% (95%CI 29.9 to
310 54.8) and 65.8% (95%CI 44.4 to 82.3), respectively. It is of note that one of the studies on Coris found
311 sensitivity to be 87% in samples with Ct-values <25, but 0% for Ct-values ≥25 (104). The pooled speci-
312 ficity was above 99% for Coris, Panbio and Standard Q and above 98% for Rapigen and Standard F. All
313 results are presented in Figure 3. Hierarchical summary receiver-operating characteristic for Standard
314 Q and Panbio are available in the Supplement (S6).

315 The remaining thirteen Ag-RDTs did not have sufficient data to allow for a test-specific meta-
316 analysis. For the ESPLINE SARS-CoV-2 by Fujirebio (Japan; henceforth called Espline) sensitivity
317 ranged widely from 23.5% to 80.7%, while both the 2019-nCov Antigen Rapid Test Kit by Shenzhen
318 Bioeasy Biotechnology (China; henceforth called Bioeasy) and BD Veritor by Becton, Dickinson and
319 Company (US, New Jersey; henceforth called BD Veritor) showed smaller variability with sensitivities
320 within 66.7% to 93.9% and 76.3% to 96.4%, respectively. For the Sofia SARS Antigen FIA by Quidel
321 (US, California; henceforth called Sofia), a sensitivity between 76.8% and 93.8% was reported (Table
322 1). Forest plots for the data sets for each Ag-RDT are provided in the Supplement (S5).

323 Specificity was above 98% for BD Veritor and Espline for studies on NP or NP/OP samples and
324 for Sofia it was 96.9%. For Bioeasy, specificity was as low as 85.6% in one study, even though the test
325 was performed as recommended by the manufacturer. The results for all Ag-RDTs that have been
326 evaluated in more than one data set but did not qualify for a test specific meta-analysis are summa-

327 rized in Table 2. The residual Ag-RDTs that were evaluated in one data set only are included in Table
328 1 and Supplement (S5).

329 Four studies accounting for 15 data sets conducted head-to-head clinical accuracy evaluations
330 of tests using the same sample or samples from the same participant. These data sets are underlined
331 in Table 1. Two such studies included more than 100 samples, whereas the other two included too
332 small sample sizes to draw clear conclusions (96, 106). All tests were performed non-IFU conform as
333 banked specimens were tested, the type of sample (OP, BAL/TW) was not recommended or vi-
334 ral/universal transport medium (VTM/UTM) was used resulting in pre-dilution. Not surprisingly, one
335 head-to-head study found overall low sensitivity, with Standard Q (sensitivity 49.4%) being slightly
336 more sensitive than Panbio (sensitivity 44.6%), but less sensitive than the CLINITEST® Rapid COVID-19
337 Antigen Test by Siemens Healthineers (Germany; sensitivity 54.9%) (89). Another study found
338 Bioeasy (sensitivity 85.0%) to have higher sensitivity than Rapigen (sensitivity 62.0%) (105). In both
339 studies, specificity was above 97.0% for all Ag-RDTs, except for SARS-CoV-2 Ag-RDT by Liming Bio
340 (China; specificity 90.0%) (Supplement S5).

341

342 SUBGROUP ANALYSIS

343 The results are presented in Figure 4. Detailed results for the subgroup analysis are available in
344 the Supplement (S7 to 11).

345

346 **Subgroup analysis by IFU conformity**

347 The summary results are presented in Figure 4B. When assessing only studies with an IFU-
348 conforming sampling, a subgroup analysis by test type was possible for studies using Panbio (58, 59,
349 62, 63, 67, 68, 73, 77, 86, 97, 102) and Standard Q (62, 72, 74, 76, 81, 82, 88, 97) with 20 data sets
350 performing 11,658 tests in total (Standard Q accounted for eight (40%) data sets and 3,293 (28.2%)
351 tests). For Standard Q, we found a pooled sensitivity and specificity of 84.4% (95% CI 79.1 to 88.6)
352 and 99.3% (95% CI 97.9 to 99.8) and for Panbio, we found a pooled sensitivity and specificity of

353 76.9% (95% CI 69.4 to 83.0) and 99.9% (95% CI 99.5 to 100.0), respectively. These results are largely
354 similar to the subgroup analysis of the two tests when using NP samples.

355

356 **Subgroup analysis by sample type**

357 Most data sets evaluated NP or combined NP/OP swabs (49 data sets and 20,115 samples) as
358 the sample type for the Ag-RDT. NP or combined NP/OP swabs achieved a pooled sensitivity of 77.3%
359 (95% CI 72.0 to 81.9). Data sets that used AN/MT swabs for Ag-RDTs (five data sets and 6496 sam-
360 ples) showed a summary estimate for sensitivity of 63.5% (95% CI 49.5 to 75.5). Out of these five
361 AN/MT data sets, three data sets used NP samples for the RT-PCR comparison (sensitivity 44.7% to
362 82.1%, specificity 99.1% to 100%) (57, 58, 82), while only two data sets used AN/MT for both Ag-RDT
363 and RT-PCR testing (sensitivity 57,7% to 79,5%, specificity 98,7% to 100%; Figure 4A) (60, 93).

364 When evaluating results from two studies that reported direct head-to-head comparison of NP
365 and MT samples from the same participants using the same Ag-RDT (Standard Q), the two sample
366 types showed equivalent performance (81, 82).

367 Analysis of performance with an OP swab (722 samples), showed pooled sensitivity of only
368 48.2% (95%CI 42.7 to 53.8). However, all data were from one single head-to-head study that applied
369 the same sample to four different tests after dilution with UTM (89). Specificity was above 99% for all
370 three of the subgroups analyzed.

371 We were not able to perform a subgroup meta-analysis for BAL/TW due to insufficient data as
372 there was only one study with 73 samples evaluating the Rapigen, Panbio and Standard Q (96). How-
373 ever, BAL/TW would in any case be off label use and is not considered a POC sample.

374 Another off-label sample used in one study (58) was saliva. In this data set with 610 samples,
375 overall sensitivity was 23.1% (95% CI 16.2 to 31.9), while even sensitivity in samples from sympto-
376 matic patients with a Ct-value ≤ 25 was of only 41% (95% CI 28 to 56). Specificity was reported to be
377 100% (95% CI 99 to 100) (58).

378 Three tests had sufficient data sets available to meta-analyze performance with NP swabs by
379 test type. Standard Q with 83.3% (95%CI 77.3 to 87.9) sensitivity and 99.1% (95%CI 98.2 to 99.6)
380 specificity and Panbio with 78.7% (95%CI 71.4 to 84.5) sensitivity and 99.9% (95%CI 99.5 to 100)
381 specificity were the best performing tests. Coris had a sensitivity of only 41.9% (95%CI 29.9 to 54.8).

382

383 **Subgroup analysis in symptomatic and asymptomatic patients**

384 Within the data sets possible to meta-analyze, 12,625 samples (77.2%) were from symptomatic
385 and 3,737 (22.8%) from asymptomatic patients. The pooled sensitivity for symptomatic patients was
386 markedly different compared to asymptomatic patients with 78.1% (95%CI 69.6 to 84.8) versus
387 62.5% (95%CI 39.7 to 80.8), but confidence intervals were overlapping. Specificity was 99.7% (95%CI
388 99.4 to 99.9) for symptomatic and 99.9% (95%CI 97.6 to 100) for asymptomatic patients, respectively
389 (Figure 4C).

390

391 **Subgroup analysis comparing symptom duration**

392 Limited data were available for this sub-analysis: data was analyzed for 2,875 patients with
393 symptoms less than 7 days and 249 patients with symptoms ≥ 7 days. It was only possible to perform
394 a univariate analysis of sensitivity. The pooled sensitivity for patients with onset of symptoms <7 days
395 was 87.5% (95%CI 86.0 to 89.1) which is markedly higher than the 64.1% (95%CI 54.4 to 73.8) sensi-
396 tivity found for individuals tested ≥ 7 days from onset of symptoms (Figure 4C).

397

398 **Subgroup analysis by Ct-values**

399 There were also limited data available for comparison of Ct-values in similar ranges. In an effort
400 to use as much of the heterogeneous data as possible, the cut-offs for the Ct-value groups were re-
401 laxed by 2-3 points within each range. The <25 group included values reported as ≤ 24 to <25 , the <30
402 group included values from ≤ 29 to ≤ 33 . This resulted in some overlap for the <30 and ≥ 30 groups.
403 The pooled sensitivity for Ct-values <25 was markedly better with 94.2% (95%CI 93.2 to 95.2) com-

404 pared to ≥ 25 32.5% (95%CI 28.0 to 37.1; Figure 4D). A similar pattern was observed when the Ct-
405 values were analyzed using cut-offs <30 or ≥ 30 , resulting in a sensitivity of 87.9% (95%CI 86.7 to 89.2)
406 and 47.8% (95%CI 41.1 to 54.5), respectively (Figure 4D). Sensitivity in samples with a low viral load
407 (<5 log₁₀ copies/ml) ranged between 46.9% (lowest estimate in single study) to 48.1% (highest es-
408 timate in a single study). In contrast, higher viral load samples (>6 log₁₀ copies/ml) showed higher
409 sensitivity, ranging from 71.4% to 100%.

410

411 **Subgroup analysis by age, type of RT-PCR and viral load**

412 We were not able to perform a meta-analysis for the subgroups by age, type of RT-PCR or viral
413 load (viral copies/mL) due to insufficient data.

414 Sensitivity by age ranged from 72.7% to 100% in patients under 18 years. A similar picture was
415 found in adults ≥ 18 years, with sensitivity ranging between 76.3% to 93.6%. Specificity was above
416 99% in both groups.

417 In 52 (70.3%) of the data sets only one type of RT-PCR was used, whereas 15 (20.3%) tested
418 samples in the same study using different RT-PCRs. For seven (9.4%) of the data sets we could not tell
419 the type of RT-PCR. The Cobas® SARS-CoV-2 Test from Roche (Germany) was used most frequently in
420 24 (32.4%) of the data sets, followed by the Allplex® 2019 n-CoV Assay from Seegene in 16 (21.6%)
421 and the SARS CoV-2 assay from Corman/TibMolBio in 14 (18.9%) of the data sets.

422

423 **Meta regression**

424 We were not able to perform a meta-regression due to the considerable heterogeneity in re-
425 porting sub-groups, which resulted in too few studies with sufficient data for comparison.

426 **Publication Bias**

427 The result of the Deeks' test indicate significant asymmetry in the funnel plot for all 64 datasets
428 with complete results ($p=0.01$) and for Standard Q publications ($p=0.03$), but not Panbio publications
429 ($p=0.95$). All funnel plots are listed in the Supplement (S12).

430

431 **COMPARISON WITH ANALYTICAL STUDIES**

432 The four included analytical studies provided 24 data sets in total, evaluating eight different Ag-
433 RDTs. 45.8% of the samples originated from NP swabs, whereas throat saliva, a combination of naso-
434 pharyngeal aspirate and throat swab, as well as a combination of NP and throat swab accounted for
435 16.6% each. One data set included sputum.

436 Overall, the reported analytical sensitivity (limit of detection) in the studies correlated with the
437 results of the meta-analysis presented above. For example, one study on NP swabs found Rapigen
438 (limit of detection (LOD) in log₁₀ copies per swab (108): 10.2) and Coris (LOD 7.46) to perform worse
439 than Panbio (LOD 6.55) and Standard Q (LOD 6.78)(66). Similar results were found in another study,
440 where the Standard Q showed the lowest LOD (detecting virus up to what is an equivalent Ct-value of
441 28.67), when compared to that of Rapigen and Coris (detecting virus up to what is an equivalent Ct-
442 value of only 18.44 for both)(84).

443

444 **SENSITIVITY ANALYSIS**

445 When case control studies (13/64) were excluded, the pooled sensitivity stayed the same with
446 73.8% (95%CI 68.7 to 78.4) compared to 73.8% (95%CI 68.6 to 78.5) in the overall analysis with no
447 change in pooled specificity. When excluding pre-prints (35/64), sensitivity decreased slightly to
448 69.2% (95% CI 60.7-76.6) compared to the overall analysis.

449 **DISCUSSION**

450 In this comprehensive systematic review and meta-analysis, we have summarized the data of 52
451 studies evaluating the accuracy of 20 different Ag-RDTs. Across all meta-analyzed samples, our re-
452 sults show a sensitivity and specificity of 73.8% (95%CI 68.6 to 78.5) and 99.7% (95% CI 99.3 to 99.9).
453 Over half of the studies did not perform the Ag-RDT in accordance with the test manufacturers' rec-
454 ommendation, which affected sensitivity negatively. When considering only IFU-conform studies the
455 sensitivity increased to 79.1% (95%CI 75.0 to 82.8). While we found the sensitivity to vary across
456 specific tests, the specificity was more consistently high.

457

458 The two Ag-RDTs that have been approved through the WHO emergency use listing procedure,
459 Abbott Panbio and SD Biosensor Standard Q (distributed by Roche in Europe), have not only drawn
460 the largest research interest, but also continue to be the best performing tests when comparing their
461 meta-analyzed accuracy to that of other Ag-RDTs (Standard F, Coris and Rapigen). Two other Ag-RDTs
462 with more data available (however insufficient data to meta-analyze) also show higher performance
463 (BD Veritor and Sophia). However, both require an instrument for operation.

464

465 Not surprisingly, lower Ct-values, the RT-PCR semi-quantitative correlate for a high virus con-
466 centration, resulted in a significantly higher Ag-RDT sensitivity when compared to a high Ct-value
467 (pooled sensitivity 94.2% vs. 32.5%). This confirms prior data that suggested that antigen concentra-
468 tions and Ct-values were tightly correlated in NP samples (14). Ag-RDTs also showed higher sensitivi-
469 ty in patients within 7 days after symptom onset than in patients later in the course of the disease
470 (pooled sensitivity 87.5% vs. 64.1%), which is to be expected given that samples from patients within
471 the first week after symptom onset have been shown to contain the highest virus concentrations
472 (109). In line with this, studies presenting an unexpectedly low overall sensitivity either shared a
473 small population size with an on average high Ct-value (83, 98) or performed the Ag-RDT not as per

474 IFU, e.g., using saliva samples (58, 89). In contrast, studies with an unusually high Ag-RDT sensitivity
475 were based on study populations with a high median Ct-value, between 18 and 22 (65, 94).

476 Our analysis also found that the accuracy of Ag-RDTs is substantially higher in symptomatic pa-
477 tients than in asymptomatic (pooled sensitivity 78.1% vs. 62.5%). Given that prior studies found
478 largely no difference in the trajectory of viral load of patients with and without symptoms over the
479 course of disease (109), this is likely explained by the varied stage in the course of disease at which
480 testing is performed in asymptomatic patients presenting for one-time screening testing. While we
481 were not able to perform a meta-regression assessing performance by duration of infection, studies
482 that enrolled asymptomatic contacts of infected patients (3, 77, 99) were more likely to show higher
483 Ag-RDT sensitivity than studies that performed random screening of asymptomatic persons (64, 93).
484 This is explained by the fact, that asymptomatic persons who were tested after a contact with an
485 infected person are more likely to be captured in the early phase of disease and have higher viral
486 loads at the time of testing (110). However, with random screening, detection is possible at any point
487 of disease (i.e., including late in disease, when PCR is still positive, but viable virus is rapidly decreas-
488 ing (111)).

489 With regards to the sampling and testing procedure, we found Ag-RDTs to perform similarly
490 across upper-respiratory swab samples (e.g., NP and AN/MT), particularly when considering the most
491 reliable comparisons from head-to-head studies.

492 Similar to previous assessment (6), the methodological quality of the included studies revealed a
493 very heterogenous picture. In the future, aligning the design of clinical accuracy studies to common
494 agreed upon minimal specifications (e.g., by WHO or European Center of Disease Control) and re-
495 porting the results in a standardized way (112) would improve data quality and comparability.

496

497 The main strengths of our study lie in its comprehensive approach and continuous updates. By
498 linking this review to our website www.diagnosticsglobalhealth.org, we strive to equip decision mak-
499 ers with the latest research findings on Ag-RDTs for SARS-CoV-2 and, to the best of our knowledge,

500 are the first in doing so. Furthermore, our study shows rigorous methods as both the study selection
501 and data extraction were performed by one author and independently controlled by a second, we
502 conducted blinded test extractions ahead of the actual data extraction, and we prepared a detailed
503 interpretation guide for the QUADAS-2 tool.

504 However, our study is limited in that the inclusion of both preprints and peer-reviewed litera-
505 ture could affect the quality of our report. Nonetheless, we aimed to counterbalance this effect by
506 applying a thorough assessment of all clinical studies included, utilizing the QUADAS-2 tool. Further-
507 more, a sensitivity analysis excluding preprints was performed. In addition, we restricted our report
508 to data found in common research databases and the FINDdx website. Even though we are aware
509 that further data for example from governmental research institutes exists (113), such data could not
510 be included as sufficient detail describing the methods and results are not publicly available. Finally,
511 the strong heterogeneity in data reporting, as discussed above, limited the meta-analysis.

512

513 **CONCLUSION**

514 In summary, it can be concluded that there are Ag-RDTs available that have high sensitivity, par-
515 ticularly when performed in the first week of illness when viral load is high, and high specificity.
516 However, our analysis also highlights the variability in results between tests (which is not reflected in
517 the manufacturer reported data), indicating the need for independent validations. Furthermore, the
518 analysis highlights the importance of tests to be done in accordance with the manufacturers' rec-
519 ommended procedures and in alignment with standard diagnostic study and reporting guidelines.
520 The accuracy achievable by the best-performing Ag-RDTs, combined with the rapid results turn-
521 around time and ease of use, suggests that these tests could have a significant impact on the pan-
522 demic if applied in thoughtful testing and screening strategies.

523 SOURCES

- 524 1. World Health Organization. Antigen-detection in the diagnosis of SARS-CoV-2 infection using
525 rapid immunoassays: interim guidance, 11 September 2020. No WHO/2019-
526 nCoV/Antigen_Detection/20201. 2020b.
- 527 2. Federal Institute for Drugs and Medical Devices (Bundesinstitut für Arzneimittel und
528 Medizinprodukte). Liste der Antigen-Tests zum direkten Erregernachweis des Coronavirus SARS-CoV-
529 2 2021 [Available from: [https://antigentest.bfarm.de/ords/antigen/r/antigentests-auf-sars-cov-
530 2/liste-der-antigentests?session=11206134045553&tz=1:00](https://antigentest.bfarm.de/ords/antigen/r/antigentests-auf-sars-cov-2/liste-der-antigentests?session=11206134045553&tz=1:00).
- 531 3. Krüger LJ, Gaeddert M, Köppel L, Brümmer LE, Gottschalk C, Miranda IB, et al. Evaluation of
532 the accuracy, ease of use and limit of detection of novel, rapid, antigen-detecting point-of-care
533 diagnostics for SARS-CoV-2. medRxiv [Preprint]; published October 04, 2020a.
- 534 4. Denkinger CM, Grenier J, Minion J, Pai M. Promise versus reality: optimism bias in package
535 inserts for tuberculosis diagnostics. *Journal of Clinical Microbiology*. 2012;50(7):2455-61.
- 536 5. World Health Organization. Advice on the use of point-of-care immunodiagnostic tests for
537 COVID-19: scientific brief, 8 April 2020. No WHO/2019-
538 nCoV/Sci_Brief/POC_immunodiagnosics/20201. 2020a.
- 539 6. Dinnes J, Deeks JJ, Adriano A, Berhane S, Davenport C, Dittrich S, et al. Rapid, point-of-care
540 antigen and molecular-based tests for diagnosis of SARS-CoV-2 infection (Review). *Cochrane*
541 *Database of Systematic Reviews*. 2020(8).
- 542 7. Olalekan A, Iwalokun B, Akinloye OM, Popoola O, Samuel TA, Akinloye O. COVID-19 rapid
543 diagnostic test could contain transmission in low- And middle-income countries. *Afr J Lab Med*.
544 2020;9(1).
- 545 8. Castro R, Luz PM, Wakimoto MD, Veloso VG, Grinsztejn B, Perazzo H. COVID-19: a meta-
546 analysis of diagnostic test accuracy of commercial assays registered in Brazil. *Brazilian Journal of*
547 *Infectious Diseases*. 2020;24(2):180-7.
- 548 9. La Marca A, Capuzzo M, Paglia T, Roli L, Trenti T, Nelson SM. Testing for SARS-CoV-2 (COVID-
549 19): a systematic review and clinical guide to molecular and serological in-vitro diagnostic assays.
550 *Reproductive Biomedicine Online*. 2020;41(3):483-99.
- 551 10. Van Walle I, Leitmeyer K, Broberg E. Meta-analysis of the clinical performance of commercial
552 SARS-CoV-2 nucleic acid, antigen and antibody tests up to 22 August 2020. medRxiv [Preprint];
553 published September 18, 2020. 2020.
- 554 11. Hayer J, Kasapic D, Zemmrich C. Real-world clinical performance of commercial SARS-CoV-2
555 rapid antigen tests in suspected COVID-19: A systematic meta-analysis of available data as per
556 November 20, 2020. medRxiv [Preprint]; published December 24, 2020.
- 557 12. Leeflang MM, Deeks JJ, Gatsonis C, Bossuyt PM, Cochrane Diagnostic Test Accuracy Working
558 G. Systematic reviews of diagnostic test accuracy. *Annals of Internal Medicine*. 2008;149(12):889-97.
- 559 13. Moher D, Liberati A, Tetzlaff J, Altman DG, Group P. Preferred reporting items for systematic
560 reviews and meta-analyses: the PRISMA statement. *Annals of Internal Medicine*. 2009;151(4):264-9,
561 W64.
- 562 14. Pollock N, Savage T, Wardell H, Lee R, Mathew A, Stengelin M, et al. Correlation of SARS-CoV-
563 2 nucleocapsid antigen and RNA concentrations in nasopharyngeal samples from children and adults
564 using an ultrasensitive and quantitative antigen assay. medRxiv [Preprint]; published November 13,
565 2020.
- 566 15. Whiting PF, Rutjes AW, Westwood ME, Mallett S, Deeks JJ, Reitsma JB, et al. QUADAS-2: a
567 revised tool for the quality assessment of diagnostic accuracy studies. *Annals of Internal Medicine*.
568 2011;155(8):529-36.
- 569 16. van Enst WA, Ochodo E, Scholten RJ, Hooff L, Leeflang MM. Investigation of publication bias
570 in meta-analyses of diagnostic test accuracy: a meta-epidemiological study. *BMC Med Res Methodol*.
571 2014;14:70.

- 572 17. Abdelrazik AM, Elshafie SM, Abdelaziz HM. Potential Use of Antigen-Based Rapid Test for
573 SARS-CoV-2 in Respiratory Specimens in Low-Resource Settings in Egypt for Symptomatic Patients
574 and High-Risk Contacts. *Laboratory Medicine*. 2020.
- 575 18. Azzi L, Baj A, Alberio T, Lualdi M, Veronesi G, Carcano G, et al. Rapid Salivary Test suitable for
576 a mass screening program to detect SARS-CoV-2: A diagnostic accuracy study. *Journal of Infection*.
577 2020;81(3):E75-E8.
- 578 19. Blairon L, Wilmet A, Beukinga I, Tre-Hardy M. Implementation of rapid SARS-CoV-2 antigenic
579 testing in a laboratory without access to molecular methods: Experiences of a general hospital.
580 *Journal of Clinical Virology*. 2020;129.
- 581 20. Cardozo KHM, Lebkuhen A, Okai GG, Schuch RA, Viana LG, Olive AN, et al. Establishing a
582 mass spectrometry-based system for rapid detection of SARS-CoV-2 in large clinical sample cohorts.
583 *Nature Communications*. 2020;11(1):6201.
- 584 21. Cazares LH, Chaerkady R, Samuel Weng SH, Boo CC, Cimbri R, Hsu HE, et al. Development of
585 a Parallel Reaction Monitoring Mass Spectrometry Assay for the Detection of SARS-CoV-2 Spike
586 Glycoprotein and Nucleoprotein. *Analytical Chemistry*. 2020;92(20):13813-21.
- 587 22. Colavita F, Vairo F, Meschi S, Valli B, Lalle E, Castilletti C, et al. COVID-19 Antigen Rapid Test
588 as Screening Strategy at the Points-of-Entry: Experience in Lazio Region, Central Italy, August-October
589 2020. medRxiv [Preprint]; published November 30, 2020.
- 590 23. Conzelmann C, Gilg A, Groß R, Schütz D, Preising N, Ständker L, et al. An enzyme-based
591 immunodetection assay to quantify SARS-CoV-2 infection. *Antiviral Research*. 2020;181:104882.
- 592 24. Courtellemont L, Guinard J, Guillaume C, Giaché S, Rzepecki V, Seve A, et al. Real-life
593 performance of a novel antigen detection test on nasopharyngeal specimens for SARS-CoV-2
594 infection diagnosis: a prospective study. medRxiv [Preprint]; published November 3, 2020.
- 595 25. Cui Z, Chang H, Wang H, Lim B, Hsu CC, Yu Y, et al. Development of a rapid test kit for SARS-
596 CoV-2: an example of product design. *Bio-Design and Manufacturing*. 2020:1-4.
- 597 26. Diao B, Wen K, Chen J, Liu Y, Yuan Z, Han C, et al. Diagnosis of Acute Respiratory Syndrome
598 Coronavirus 2 Infection by Detection of Nucleocapsid Protein. medRxiv [Preprint]; published March
599 13, 2020.
- 600 27. Diao B, Wen K, Zhang J, Chen J, Han C, Chen Y, et al. Accuracy of a nucleocapsid protein
601 antigen rapid test in the diagnosis of SARS-CoV-2 infection. *Clinical Microbiology and Infection*. 2020.
- 602 28. Foundation for Innovative New Diagnostics. FIND Evaluation of Abbott Panbio COVID-19 Ag
603 Rapid Test Device. External Report Version 21, 10 December. 2020.
- 604 29. Foundation for Innovative New Diagnostics. FIND Evaluation of Coris BioConcept COVID-19
605 Ag Respi-Strip. External Report Version 12, 10 December. 2020.
- 606 30. Grant BD, Anderson CE, Williford JR, Alonzo LF, Glukhova VA, Boyle DS, et al. SARS-CoV-2
607 Coronavirus Nucleocapsid Antigen-Detecting Half-Strip Lateral Flow Assay Toward the Development
608 of Point of Care Tests Using Commercially Available Reagents. *Analytical Chemistry*.
609 2020;92(16):11305-9.
- 610 31. Hingrat QL, Visseaux B, Laouenan C, Tubiana S, Bouadma L, Yazdanpanah Y, et al. Detection
611 of SARS-CoV-2 N-antigen in blood during acute COVID-19 provides a sensitive new marker and new
612 testing alternatives. *Clinical Microbiology and Infection*. 2020.
- 613 32. Hirotsu Y, Maejima M, Shibusawa M, Nagakubo Y, Hosaka K, Amemiya K, et al. Comparison of
614 automated SARS-CoV-2 antigen test for COVID-19 infection with quantitative RT-PCR using 313
615 nasopharyngeal swabs, including from seven serially followed patients. *International Journal of*
616 *Infectious Diseases*. 2020;99:397-402.
- 617 33. Hoehl S, Schenk B, Rudych O, Göttig S, Foppa I, Kohmer N, et al. At-home self-testing of
618 teachers with a SARS-CoV-2 rapid antigen test to reduce potential transmissions in schools. medRxiv
619 [Preprint]; published December 07, 2020.
- 620 34. Huang L, Ding L, Zhou J, Chen S, Chen F, Zhao C, et al. One-step rapid quantification of SARS-
621 CoV-2 virus particles via low-cost nanoplasmonic sensors in generic microplate reader and point-of-
622 care device. *Biosensors and Bioelectronics*. 2021;171:112685.

- 623 35. Ikeda M, Imai K, Tabata S, Miyoshi K, Mizuno T, Murahara N, et al. Clinical evaluation of self-
624 collected saliva by RT-qPCR, direct RT-qPCR, RT-LAMP, and a rapid antigen test to diagnose COVID-
625 19. medRxiv [Preprint]; published June 08,. 2020.
- 626 36. Kashiwagi K, Ishii Y, Aoki K, Yagi S, Maeda T, Miyazaki T, et al. Immunochromatographic test
627 for the detection of SARS-CoV-2 in saliva. medRxiv [Preprint]; published May 25,. 2020.
- 628 37. Kyosei Y, Namba M, Yamura S, Takeuchi R, Aoki N, Nakaishi K, et al. Proposal of De Novo
629 Antigen Test for COVID-19: Ultrasensitive Detection of Spike Proteins of SARS-CoV-2. *Diagnostics*.
630 2020;10(8).
- 631 38. Lanser L, Bellmann-Weiler R, Öttl KW, Huber L, Griesmacher A, Theurl I, et al. Evaluating the
632 clinical utility and sensitivity of SARS-CoV-2 antigen testing in relation to RT-PCR Ct values. *Infection*.
633 2020:1-3.
- 634 39. Lee JH, Choi M, Jung Y, Lee SK, Lee CS, Kim J, et al. A novel rapid detection for SARS-CoV-2
635 spike 1 antigens using human angiotensin converting enzyme 2 (ACE2). *Biosensors and*
636 *Bioelectronics*. 2021;171:112715.
- 637 40. Liu D, Ju C, Han C, Shi R, Chen X, Duan D, et al. Ultra-sensitive nanozyme-based
638 chemiluminescence paper test for rapid diagnosis of SARS-CoV-2 infection. bioRxiv [Preprint];
639 published June 05,. 2020.
- 640 41. Mahari S, Roberts A, Shahdeo D, Gandhi S. eCovSens-Ultrasensitive Novel In-House Built
641 Printed Circuit Board Based Electrochemical Device for Rapid Detection of nCovid-19. bioRxiv
642 [Preprint]; published May 11,. 2020.
- 643 42. Masiá M, Fernández-González M, Sánchez M, Carvajal M, García JA, Gonzalo N, et al.
644 Nasopharyngeal Panbio COVID-19 antigen performed at point-of-care has a high sensitivity in
645 symptomatic and asymptomatic patients with higher risk for transmission and older age. medRxiv
646 [Preprint]; published November 17,. 2020.
- 647 43. Nagura-Ikeda M, Imai K, Tabata S, Miyoshi K, Murahara N, Mizuno T, et al. Clinical Evaluation
648 of Self-Collected Saliva by Quantitative Reverse Transcription-PCR (RT-qPCR), Direct RT-qPCR,
649 Reverse Transcription-Loop-Mediated Isothermal Amplification, and a Rapid Antigen Test To
650 Diagnose COVID-19. *Journal of Clinical Microbiology*. 2020;58(9).
- 651 44. Nash B, Badea A, Reddy A, Bosch M, Salcedo N, Gomez AR, et al. The impact of high
652 frequency rapid viral antigen screening on COVID-19 spread and outcomes: a validation and
653 modeling study. medRxiv [Preprint]; published November 04,. 2020.
- 654 45. Ndwandwe D, Mathebula L, Kamadjeu R, Wiysonge CS. Cochrane corner: rapid point-of-care
655 antigen and molecular-based tests for the diagnosis of COVID-19 infection. *The Pan African Medical*
656 *Journal*. 2020;37(Suppl 1):10.
- 657 46. Pavelka M, Van-Zandvoort K, Abbott S, Sherratt K, Majdan M, Jarčuška P, et al. The
658 effectiveness of population-wide, rapid antigen test based screening in reducing SARS-CoV-2
659 infection prevalence in Slovakia. medRxiv [Preprint]; published December 04,. 2020.
- 660 47. Renuse S, Vanderboom P, Maus A, Kemp J, Gurtner K, Madugundu A, et al. Development of
661 mass spectrometry-based targeted assay for direct detection of novel SARS-CoV-2 coronavirus from
662 clinical specimens. medRxiv [Preprint]; published August 06,. 2020.
- 663 48. Seo G, Lee G, Kim MJ, Baek SH, Choi M, Ku KB, et al. Rapid Detection of COVID-19 Causative
664 Virus (SARS-CoV-2) in Human Nasopharyngeal Swab Specimens Using Field-Effect Transistor-Based
665 Biosensor. *American Chemical Society*. 2020;14(4):5135-42.
- 666 49. Singh N, Ray P, Carlin A, Magallanes C, Morgan S, Laurent L, et al. Hitting the diagnostic sweet
667 spot: Point-of-care SARS-CoV-2 salivary antigen testing with an off-the-shelf glucometer. medRxiv
668 [Preprint]; published October 02,. 2020.
- 669 50. Singh P, Chakraborty R, Marwal R, Radhakrishnan VS, Bhaskar AK, Vashisht H, et al. A rapid and
670 sensitive method to detect SARS-CoV-2 virus using targeted-mass spectrometry. *Journal of Proteins*
671 *and Proteomics*. 2020:1-7.
- 672 51. Torrente-Rodríguez RM, Lukas H, Tu J, Min J, Yang Y, Xu C, et al. SARS-CoV-2 RapidPlex: A
673 Graphene-based Multiplexed Telemedicine Platform for Rapid and Low-Cost COVID-19 Diagnosis and
674 Monitoring. *Matter*. 2020.

- 675 52. Vadlamani BS, Uppal T, Verma S, Misra M. Functionalized TiO₂ nanotube-based
676 Electrochemical Biosensor for Rapid Detection of SARS-CoV-2. *Sensors*. 2020;20(20).
- 677 53. van Beek J, Igloi Z, Boelsums T, Fanoy E, Gotz H, Molenkamp R, et al. From more testing to
678 smart testing: data-guided SARS-CoV-2 testing choices. *medRxiv [Preprint]*; published October 14,
679 2020.
- 680 54. Weitzel T, Legarraga P, Iruretagoyena M, Pizarro G, Vollrath V, Araos R, et al. Head-to-head
681 comparison of four antigen-based rapid detection tests for the diagnosis of SARS-CoV-2 in respiratory
682 samples. *bioRxiv [Preprint]*; published May 30, 2020.
- 683 55. Winkel BMF, Schram E, Gremmels H, Debast S, Schuurman R, Wensing AMJ, et al. Screening
684 for SARS-CoV-2 infection in asymptomatic individuals using the Panbio™ COVID-19 Antigen Rapid
685 Test (Abbott) compared to RT-qPCR. *medRxiv [Preprint]*; published December 04, 2020.
- 686 56. Zakashansky J, Imamura A, Salgado D, Romero Mercieca H, Aguas RFL, Lao A, et al. Detection
687 of the SARS-CoV-2 spike protein in saliva with Shrinky-Dink® electrodes. *medRxiv [Preprint]*;
688 published November 18, 2020.
- 689 57. Abdulrahman A, Mustafa F, AlAwadhi AI, Alansari Q, AlAlawi B, AlQahtani M. Comparison of
690 SARS-COV-2 nasal antigen test to nasopharyngeal RT-PCR in mildly symptomatic patients. *medRxiv*
691 *[Preprint]*; published December 08, 2020.
- 692 58. Agulló V, Fernández-González M, Ortiz de la Tabla V, Gonzalo-Jiménez N, García JA, Masiá M,
693 et al. Evaluation of the rapid antigen test Panbio COVID-19 in saliva and nasal swabs: A population-
694 based point-of-care study. *Journal of Infection*. 2020;published online ahead of issue.
- 695 59. Albert E, Torres I, Bueno F, Huntley D, Molla E, Fernandez-Fuentes MA, et al. Field evaluation
696 of a rapid antigen test (Panbio™ COVID-19 Ag Rapid Test Device) for COVID-19 diagnosis in primary
697 healthcare centres. *Clinical Microbiology and Infection*. 2020.
- 698 60. Alemany A, Baro B, Ouchi D, Ubals M, Corbacho-Monné M, Vergara-Alert J, et al. Analytical
699 and Clinical Performance of the Panbio COVID-19 Antigen-Detecting Rapid Diagnostic Test. *medRxiv*
700 *[Preprint]*; published November 3, 2020.
- 701 61. Beck ET, Paar W, Fojut L, Serwe J, Jahnke RR. Comparison of Quidel Sofia SARS FIA Test to
702 Hologic Aptima SARS-CoV-2 TMA Test for Diagnosis of COVID-19 in Symptomatic Outpatients. *Journal*
703 *of Clinical Microbiology*. 2020.
- 704 62. Berger A, Ngo Nsoga M-T, Perez Rodriguez FJ, Abi Aad Y, Sattoune P, Gayet-Ageron A, et al.
705 Diagnostic accuracy of two commercial SARS-CoV-2 Antigen-detecting rapid tests at the point of care
706 in community-based testing centers. *medRxiv [Preprint]*; published November 23, 2020.
- 707 63. Bulilete O, Lorente P, Leiva A, Carandell E, Oliver A, Rojo E, et al. Evaluation of the Panbio™
708 rapid antigen test for SARS-CoV-2 in primary health care centers and test sites. *medRxiv [Preprint]*;
709 published November 16, 2020.
- 710 64. Cerutti F, Burdino E, Milia MG, Alice T, Gregori G, Bruzzone B, et al. Urgent need of rapid
711 tests for SARS CoV-2 antigen detection: Evaluation of the SD-Biosensor antigen test for SARS-CoV-2.
712 *Journal of Clinical Virology*. 2020;132:104654.
- 713 65. Chaimayo C, Kaewnaphan B, Tanlieng N, Athipanyasilp N, Sirijatuphat R, Chayakulkeeree M,
714 et al. Rapid SARS-CoV-2 antigen detection assay in comparison with real-time RT-PCR assay for
715 laboratory diagnosis of COVID-19 in Thailand. *Virology Journal*. 2020;17(1):177.
- 716 66. Corman V, Haage V, Bleicker T, Schmidt ML, Muehlemann B, Zuchowski M, et al. Comparison
717 of seven commercial SARS-CoV-2 rapid Point-of-Care Antigen tests. *medRxiv [Preprint]*; published
718 November 13, 2020.
- 719 67. Drevinek P, Hurych J, Kepka Z, Briksi A, Kulich M, Zajac M, et al. The sensitivity of SARS-CoV-2
720 antigen tests in the view of large-scale testing. *medRxiv [Preprint]*; published November 24, 2020.
- 721 68. Fenollar F, Bouam A, Ballouche M, Fuster L, Prudent E, Colson P, et al. Evaluation of the
722 Panbio Covid-19 rapid antigen detection test device for the screening of patients with Covid-19.
723 *Journal of Clinical Microbiology*. 2020.
- 724 69. Foundation for Innovative New Diagnostics. FIND Evaluation of Bionote, Inc. NowCheck
725 COVID-19 Ag Test. External Report Version 14, 10 December. 2020.

- 726 70. Foundation for Innovative New Diagnostics. FIND Evaluation of RapiGEN Inc. BIOCREDIT
727 COVID-19 Ag. External Report Version 21, 10 December. 2020.
- 728 71. Foundation for Innovative New Diagnostics. FIND Evaluation of SD Biosensor, Inc.
729 STANDARD™ F COVID-19 Ag FIA. External Report Version 21, 10 December. 2020.
- 730 72. Foundation for Innovative New Diagnostics. FIND Evaluation of SD Biosensor, Inc. STANDARD
731 Q COVID-19 Ag Test. External Report Version 21, 10 December. 2020.
- 732 73. Gremmels H, Winkela BMF, Schuurmana R, Rosinghb A, Rigterc NAM, Rodriguezd O, et al.
733 Real-life validation of the Panbio COVID-19 Antigen Rapid Test (Abbott) in community-dwelling
734 subjects with symptoms of potential SARS-CoV-2 infection. *EClinicalMedicine*. 2020;published online
735 ahead of issue.
- 736 74. Gupta A, Khurana S, Das R, Sriganan D, Singh A, Mittal A, et al. Rapid chromatographic
737 immunoassay-based evaluation of COVID-19: A cross-sectional, diagnostic test accuracy study & its
738 implications for COVID-19 management in India. *Indian Journal of Medical Research*. 2020;published
739 online ahead of issue.
- 740 75. Herrera V, Hsu V, Adewale A, Hendrix T, Johnson L, Kuhlman J, et al. Testing of Healthcare
741 Workers Exposed to COVID19 with Rapid Antigen Detection. *medRxiv [Preprint]*; published August
742 18, 2020.
- 743 76. Igliński Z, Velzing J, van Beek J, van de Vijver D, Aron G, Ensing R, et al. Clinical evaluation of the
744 Roche/SD Biosensor rapid antigen test with symptomatic, non-hospitalized patients in a municipal
745 health service drive-through testing site. *medRxiv [Preprint]*; published November 20, 2020.
- 746 77. Krüger LJ, Gaeddert M, Tobian F, Lainati F, Gottschalk C, Klein JAF, et al. Evaluation of the
747 accuracy and ease-of-use of Abbott PanBio - A WHO emergency use listed, rapid, antigen-detecting
748 point-of-care diagnostic test for SARS-CoV-2. *medRxiv [Preprint]*; published December 07, 2020b.
- 749 78. Krüttgen A, Cornelissen CG, Dreher M, Hornef MW, Imöhl M, Kleinesa M. Comparison of the
750 SARS-CoV-2 Rapid antigen test to the real star Sars-CoV-2 RT PCR kit. *Journal of Virological Methods*.
751 2020;288:114024.
- 752 79. Lambert-Niclot S, Cuffel A, Le Pape S, Vauloup-Fellous C, Morand-Joubert L, Roque-Afonso
753 AM, et al. Evaluation of a Rapid Diagnostic Assay for Detection of SARS-CoV-2 Antigen in
754 Nasopharyngeal Swabs. *Journal of Clinical Microbiology*. 2020;58(8).
- 755 80. Linares M, Pérez-Tanoira R, Carrero A, Romanyk J, Pérez-García F, Gómez-Herruz P, et al.
756 Panbio antigen rapid test is reliable to diagnose SARS-CoV-2 infection in the first 7 days after the
757 onset of symptoms. *Journal of Clinical Virology*. 2020;133:104659.
- 758 81. Lindner A, Nikolai O, Rohardt C, Burock S, Hülso C, Bölke A, et al. Head-to-head comparison of
759 SARS-CoV-2 antigen-detecting rapid test with professional-collected anterior nasal versus
760 nasopharyngeal swab. *medRxiv [Preprint]*; published December 07, 2020.
- 761 82. Lindner AK, Nikolai O, Kausch F, Wintel M, Hommes F, Gertler M, et al. Head-to-head
762 comparison of SARS-CoV-2 antigen-detecting rapid test with self-collected anterior nasal swab versus
763 professional-collected nasopharyngeal swab. *European Respiratory Journal*. 2020.
- 764 83. Liotti FM, Menchinelli G, Lalle E, Palucci I, Marchetti S, Colavita F, et al. Performance of a
765 novel diagnostic assay for rapid SARS-CoV-2 antigen detection in nasopharynx samples. *Clinical
766 Microbiology and Infection*. 2020;article in press.
- 767 84. Mak GC, Lau SS, Wong KK, Chow NL, Lau CS, Lam ET, et al. Analytical sensitivity and clinical
768 sensitivity of the three rapid antigen detection kits for detection of SARS-CoV-2 virus. *Journal of
769 Clinical Virology*. 2020;133:104684.
- 770 85. Mak GCK, Cheng PKC, Lau SSY, Wong KKY, Lau CS, Lam ETK, et al. Evaluation of rapid antigen
771 test for detection of SARS-CoV-2 virus. *Journal of Clinical Virology*. 2020;129.
- 772 86. Merino-Amador P, Guinea J, Muñoz-Gallego I, González-Donapetry P, Galán J-C, Antona N, et
773 al. Multicenter evaluation of the Panbio™ COVID-19 Rapid Antigen-Detection Test for the diagnosis of
774 SARS-CoV-2 infection. *medRxiv [Preprint]*; published November 20, 2020.
- 775 87. Mertens P, De Vos N, Martiny D, Jassoy C, Mirazimi A, Cuyper L, et al. Development and
776 Potential Usefulness of the COVID-19 Ag Respi-Strip Diagnostic Assay in a Pandemic Context.
777 *Frontiers in Medicine*. 2020;7.

- 778 88. Nalumansi A, Lutalo T, Kayiwa J, Watera C, Balinandi S, Kiconco J, et al. Field Evaluation of the
779 Performance of a SARS-CoV-2 Antigen Rapid Diagnostic Test in Uganda using Nasopharyngeal
780 Samples. *International Journal of Infectious Diseases*. 2020;article in press.
- 781 89. Olearo F, Nörz D, Heinrich F, Sutter JP, Rödel K, Schultze A, et al. Handling and accuracy of
782 four rapid antigen tests for the diagnosis of SARS-CoV-2 compared to RT-qPCR. *medRxiv [Preprint]*;
783 published December 07,. 2020.
- 784 90. Parada-Ricart E, Gomez-Bertomeu F, Picó-Plana E, Olona-Cabases M. Usefulness of the
785 antigen for diagnosing SARS-CoV-2 infection in patients with and without symptoms. *Enferm*
786 *Infecciosas y Microbiologia Clinica*. 2020.
- 787 91. Pekosz A, Cooper C, Parvu V, Li M, Andrews J, Manabe YCC, et al. Antigen-based testing but
788 not real-time PCR correlates with SARS-CoV-2 virus culture. *medRxiv [Preprint]*; published October
789 05,. 2020.
- 790 92. Perchetti GA, Huang ML, Mills MG, Jerome KR, Greninger AL. Analytical Sensitivity of the
791 Abbott BinaxNOW COVID-19 Ag CARD. *Journal of Clinical Microbiology*. 2020;accepted manuscript
792 posted online.
- 793 93. Pilarowski G, Lebel P, Sunshine S, Liu J, Crawford E, Marquez C, et al. Performance
794 characteristics of a rapid SARS-CoV-2 antigen detection assay at a public plaza testing site in San
795 Francisco. *medRxiv [Preprint]*; published November 12,. 2020.
- 796 94. Porte L, Legarraga P, Iruretagoyena M, Vollrath V, Pizarro G, Munita J, et al. Rapid SARS-CoV-
797 2 antigen detection by immunofluorescence – a new tool to detect infectivity. *medRxiv [Preprint]*;
798 published October 06,. 2020.
- 799 95. Porte L, Legarraga P, Vollrath V, Aguilera X, Munita JM, Araos R, et al. Evaluation of a novel
800 antigen-based rapid detection test for the diagnosis of SARS-CoV-2 in respiratory samples.
801 *International Journal of Infectious Diseases*. 2020;99:328-33.
- 802 96. Schildgen V, Demuth S, Lüsebrink J, Schildgen O. Limits and opportunities of SARS-CoV-2
803 antigen rapid tests – an experience based perspective. *medRxiv [Preprint]*; published October 30,.
804 2020.
- 805 97. Schwob J-M, Miauton A, Petrovic D, Perdrix J, Senn N, Jatou K, et al. Antigen rapid tests,
806 nasopharyngeal PCR and saliva PCR to detect SARS-CoV-2: a prospective comparative clinical trial.
807 *medRxiv [Preprint]*; published November 24,. 2020.
- 808 98. Scohy A, Anantharajah A, Bodeus M, Kabamba-Mukadi B, Verroken A, Rodriguez-Villalobos H.
809 Low performance of rapid antigen detection test as frontline testing for COVID-19 diagnosis. *Journal*
810 *of Clinical Virology*. 2020;129.
- 811 99. Shrestha B, Neupane A, Pant S, Shrestha A, Bastola A, Rajbhandari B, et al. Sensitivity and
812 specificity of lateral flow antigen test kits for covid-19 in asymptomatic population of quarantine
813 centre of province 3. *Kathmandu University Medical Journal*. 2020;18(2 70COVID-19 Special
814 Issue):34-7.
- 815 100. Takeda Y, Mori M, Omi K. SARS-CoV-2 qRT-PCR Ct value distribution in Japan and possible
816 utility of rapid antigen testing kit. *medRxiv [Preprint]*; published June 19,. 2020.
- 817 101. Toptan T, Eckermann L, Pfeiffer A, Hoehl S, Ciesek S, Drosten C, et al. Evaluation of a SARS-
818 CoV-2 rapid antigen test: potential to help reduce community spread? *Journal of Clinical Virology*.
819 2020;published online ahead of issue.
- 820 102. Torres I, Poujois S, Albert E, Colomina J, Navarro D. Real-life evaluation of a rapid antigen test
821 (Panbio COVID-19 Ag Rapid Test Device) for SARS-CoV-2 detection in asymptomatic close contacts of
822 COVID-19 patients. *medRxiv [Preprint]*; published December 02,. 2020.
- 823 103. Van der Moeren N, Zwart V, Lodder E, Van den Bijllaardt W, Van Esch H, Stohr J, et al.
824 Performance evaluation of a SARS-CoV-2 rapid antigen test: test performance in the community in
825 the Netherlands. *medRxiv [Preprint]*; published October 21,. 2020.
- 826 104. Veyrenche N, Bollore K, Pisoni A, Bedin AS, Mondain AM, Ducos J, et al. Diagnosis value of
827 SARS-CoV-2 antigen/antibody combined testing using rapid diagnostic tests at hospital admission.
828 *medRxiv [Preprint]*; published September 28,. 2020.

- 829 105. Weitzel T, Legarraga P, Iruretagoyena M, Pizarro G, Vollrath V, Araos R, et al. Comparative
830 evaluation of four rapid SARS-CoV-2 antigen detection tests using universal transport medium. *Travel*
831 *Medicine and Infectious Disease*. 2020;39:101942.
- 832 106. Yokota I, Sakurazawa T, Sugita J, Iwasaki S, Yasuda K, Yamashita N, et al. Performance of
833 qualitative and quantitative antigen tests for SARS-CoV-2 in early symptomatic patients using saliva.
834 *medRxiv [Preprint]*; published November 10, 2020.
- 835 107. Young S, Taylor SN, Cammarata CL, Varnado KG, Roger-Dalbert C, Montano A, et al. Clinical
836 evaluation of BD Veritor SARS-CoV-2 point-of-care test performance compared to PCR-based testing
837 and versus the Sofia 2 SARS Antigen point-of-care test. *Journal of Clinical Microbiology*. 2020;59(1).
- 838 108. Corman VM, Landt O, Kaiser M, Molenkamp R, Meijer A, Chu DK, et al. Detection of 2019
839 novel coronavirus (2019-nCoV) by real-time RT-PCR. *Euro Surveill*. 2020;25(3).
- 840 109. Kissler SM, Fauver JR, Mack C, Olesen SW, Tai C, Shiue KY, et al. SARS-CoV-2 viral dynamics in
841 acute infections. *medRxiv [Preprint]*; published December 02, 2020.
- 842 110. Kociolek LK, Muller WJ, Yee R, Dien Bard J, Brown CA, Revell PA, et al. Comparison of Upper
843 Respiratory Viral Load Distributions in Asymptomatic and Symptomatic Children Diagnosed with
844 SARS-CoV-2 Infection in Pediatric Hospital Testing Programs. *Journal of Clinical Microbiology*.
845 2020;59(1).
- 846 111. Turner F, Vandenberg A, Slepnev VI, Car S, Starritt RE, Seger MV, et al. Post-Disease
847 Divergence in SARS-CoV-2 RNA Detection between Nasopharyngeal, Anterior Nares and Saliva/Oral
848 Fluid Specimens - Significant Implications for Policy & Public Health. *medRxiv [Preprint]*; published
849 January 26, 2021.
- 850 112. Bossuyt PM, Reitsma JB, Bruns DE, Gatsonis CA, Glasziou PP, Irwig L, et al. STARD 2015: an
851 updated list of essential items for reporting diagnostic accuracy studies. *British Medical Journal*.
852 2015;351:h5527.
- 853 113. Paul-Ehrlich-Institute. Comparative evaluation of the sensitivities of SARSCoV-2 antigen rapid
854 tests Langen: Federal Institute for Vaccines and Biomedicines; 2020.
- 855

856 **Table 1:** Clinical accuracy data for Ag-RDTs against SARS-CoV-2

Author	Study location	Sample type	Sample condition	IFU conform	Sample size	Sensitivity	Specificity
AAZ, COVID-VIRO® (LFA)							
<u>[97] Schwob, NP</u>	Switzerland	NP	fresh	yes	324	84.1% (95% CI 76.9-89.7)	100% (95% CI 98.0*-100*)
Abbott, BinaxNOW™ (LFA)							
<u>[93] Pilarowski, AN</u>	USA	AN/MT	fresh	yes	878	57.7% (95% CI 36.9*-76.7*)	100%* (95% CI 99.6*-100*)
Abbott, Panbio™ (LFA)							
<u>[60] Alemany, NP</u>	Spain	NP	banked	no	919	93.4% (95% CI 91.5-95.0)	100% (95% CI 95.8-100)
<u>[86] Merino-Amador, NP</u>	Spain	NP	fresh	yes	958	90.5% (95% CI 87.5-93.6)	98.8% (95% CI 98.0-99.7)
<u>[77] Krüger, NP</u>	Germany	NP	fresh	yes	1034	87.5% (95% CI 79.8-92.5)	99.9% (95% CI 99.4-100)
<u>[97] Schwob, NP</u>	Switzerland	NP	fresh	yes	271	86.1% (95% CI 78.6-91.7)	100% (95% CI 97.6*-100*)
<u>[62] Berger, NP</u>	Switzerland	NP	fresh	yes	535	85.5% (95% CI 78.0-91.2)	100% (95% CI 99.1-100)
<u>[57] Abdulrahman, AN</u>	Bahrain	AN/MT	fresh	no	4183	82.1% (95% CI 79.2-84.8)	99.1% (95% CI 98.8-99.4)
<u>[73] Gremmels, NP, Ar</u>	Netherlands	NP	fresh	yes	208	81.0% (95% CI 69.0-89.9)	100% (95% CI 97.5-100)
<u>[59] Albert, NP</u>	Spain	NP	fresh	yes	412	79.6% (95% CI 67.0-88.8)	100% (95% CI 98.7-100)
<u>[60] Alemany, MT</u>	Spain	AN/MT	banked	no	487	79.5% (95% CI 71.0-86.4)	98.7% (95% CI 96.9-99.6)
<u>[68] Fenollar, NP</u>	France	NP	fresh	yes	341	75.5% (95% CI 69.5-81.5)	94.9% (95% CI 91.2-98.6)
<u>[80] Linares, NP</u>	Spain	NP	fresh	unclear	255	73.3% (95% CI 62.2-83.8)	100% (95% CI 98.1*-100*)
<u>[73] Gremmels, NP, Ut</u>	Netherlands	NP	fresh	yes	1367	72.6% (95% CI 64.5-79.9)	100% (95% CI 99.7-100)
<u>[63] Bullete, NP</u>	Spain	NP	fresh	yes	1362*	71.4% (95% CI 63.2*-78.7)	99.8% (95% CI 99.4-99.9)
<u>[67] Drevinek, NP</u>	Czech Republic	NP	fresh	yes	591	66.4% (95% CI 59.9-72.2)	100% (95% CI 99.0-100)
<u>[58] Agullo, NP</u>	Spain	NP	fresh	yes	652*	57.3% (95% CI 48.3-65.8)	99.8% (95% CI 98.8-100)
<u>[77] Krüger, OP</u>	Germany	OP	fresh	no	74	50.0% (95% CI 1.3-98.7)	100% (95% CI 94.9-100)
<u>[96] Schildegan, LRT</u>	Germany	BAL/TW	unclear	no	<u>73</u>	50.0% (95% CI 34.2*-65.8*)	77.4% (95% CI 58.9*-90.4*)
<u>[102] Torres, NP</u>	Spain	NP	fresh	yes	634	48.1% (95% CI 37.4-58.9)	100% (95% CI 99.3-100)
<u>[58] Agullo, AN</u>	Spain	AN/MT	fresh	no	659	44.7% (95% CI 36.1-53.6)	100% (95% CI 99.1-100)
<u>[89] Olearo, OP</u>	Germany	OP	unclear	no	<u>184</u>	44.6% (95% CI 34.3-55.3)	100% (95% CI 96.3-100)
<u>[58] Agullo, saliva</u>	Spain	saliva	fresh	no	610	23.1% (95% CI 16.2-31.9)	100% (95% CI 99.0-100)
Becton, Dickinson and Company, BD Veritor™ (requires reader)							
<u>[91] Pekosz, NP</u>	USA	NP	fresh	no	251	96.4% (95% CI 82.3-99.4)	98.7% (95% CI 96.1-99.7)
<u>[103] Van der Moeren, MT/OP, scn</u>	Netherlands	MT/OP	banked	no	351*	94.1% (95% CI 71.1-100)	100% (95% CI 98.9-100)
<u>[107] Young, NP</u>	USA	NP	banked	no	251	76.3%* (95% CI 60.8*-87.0*)	99.5%* (95% CI 97.4*-99.9*)
Beijing Savant Biotechnology, SARS-CoV-2 detection kit (LFA)							
<u>[105] Weitzel, NP/OP</u>	Chile	NP/OP	banked	no	<u>109</u>	16.7% (95% CI 10.0-26.5*)	100% (95% CI 89.0-100)
Bionote, NowCheck® (LFA)							
<u>[69] FIND, NP</u>	Brazil	NP	fresh	yes	400	89.2% (95% CI 81.7-93.9)	97.3% (95% CI 94.8-98.6)
Coris BioConcept, COVID-19 Ag Respi-Strip (LFA)							
<u>[87] Mertens, NP</u>	Belgium	NP	banked	no	328	57.6% (95% CI 48.7*-66.1*)	99.5% (95% CI 97.2*-100*)
<u>[79] Lambert-Niclot, NP</u>	France	NP	fresh	no	138	50.0% (95% CI 39.5-60.5)	100% (95% CI 91.8-100)
<u>[3] Krüger, NP/OP</u>	Germany/England	NP/OP	unclear	no	417	50.0% (95% CI 21.5-78.5)	95.8% (95% CI 93.4-97.4)
<u>[98] Scohy, NP</u>	Belgium	NP	fresh	no	148	30.2% (95% CI 21.7-39.9)	100% (95% CI 91.6*-100*)
<u>[104] Veyrenche, NP</u>	France	NP	fresh	no	65	29.0% (95% CI 15.7-42.3)	100% (95% CI 83.2*-100*)
Fujirebio, ESPLINE® SARS-CoV-2 (LFA)							
<u>[100] Takeda, NP</u>	Japan	NP	unclear	no	162	80.7%* (95% CI 68.6*-89.6*)	100%* (95% CI 96.4*-100*)
<u>[106] Yokota, NP</u>	Japan	NP	banked	no	<u>17</u>	58.8%* (95% CI 32.9*-81.6*)	not provided
<u>[106] Yokota, saliva</u>	Japan	saliva	banked	no	<u>17</u>	23.5%* (95% CI 6.8*-49.9*)	not provided
Fujirebio, Lumipulse® G SARS-CoV-2 Ag (requires reader)							
<u>[106] Yokota, NP</u>	Japan	NP	banked	no	<u>17</u>	100% (95% CI 80.5*-100)	not provided
<u>[106] Yokota, saliva</u>	Japan	saliva	banked	no	<u>17</u>	82.4%* (95% CI 56.6*-96.2*)	not provided

857

858 **Caption:** * Values differ from those provided in the respective manuscript due to missing or contradictory data.
 859 Data sets from an underlined author have not undergone peer-review yet (time of data extraction,
 860 28.12.2020).
 861 In data sets with underlined sample sizes the samples were used in head-to-head studies, performing different
 862 Ag-RDTs on the same patient.
 863 Naming convention column “author”: number in brackets relates to the list of sources. Letters behind the au-
 864 thor’s last name differentiates the data set from other data sets by the same author.
 865 IFU = instructions for use; NP = nasopharyngeal; OP = oropharyngeal; AN = anterior nasal; MT = mid turbinate;
 866 LRT = lower respiratory tract; BAL/TW = bronchoalveolar lavage and throat wash; CI = confidence interval; Ar =
 867 Aruba; Ut = Utrecht.

868 **Table 1 (continued):** Clinical accuracy data for Ag-RDTs against SARS-CoV-2

Author	Study location	Sample type	Sample condition	IFU conform	Sample size	Sensitivity	Specificity
Liming Bio, SARS-CoV-2 Ag-RDT (LFA)							
[105] Weitzel, NP/OP	Chile	NP/OP	banked	no	<u>19</u>	0.0% (95% CI 0.0-29.9)	90.0% (95% CI 59.6-98.2)
MEDsan[®], SARS-CoV-2 Antigen Rapid Test (LFA)							
[89] Olea-ro, OP	Germany	OP	unclear	no	<u>184</u>	45.8% (35.5%-56.5%)	97.0% (91.5%-98.9%)
QUIDEL, Sofia SARS Antigen FIA (requires reader)							
[94] Porte, NP/OP	Chile	NP/OP	banked	no	64	93.8% (95% CI 79.9-98.3)	96.9% (95% CI 84.3-99.4)
[61] Beck, NP	USA	NP	fresh	yes	346	77.0% (95% CI 64.5*-86.9*)	99.6% (95% CI 98.1*-100*)
[75] Herrera, unknown	USA	unclear	unclear	unclear	1172	76.8% (95% CI 72.6-80.5)	99.2% (95% CI 98.2-99.7)
RapiGEN, Biocredit Covid-19 Antigen Detection Kit (LFA)							
[99] Shrestha, NP	Nepal	NP	fresh	yes	113	85.0% (95% CI 71.7*-93.8*)	100% (95% CI 94.6*-100*)
[70] FIND, NP	Brazil	NP	fresh	yes	476	74.4% (95% CI 65.8-81.4)	99.0% (95% CI 97.2-99.6)
[104] Weitzel, NP/OP	Chile	NP/OP	banked	no	<u>109</u>	62.0% (95% CI 51.0-71.9)	100% (95% CI 88.7-100)
[96] Schildgen, LRT	Germany	BAL/TW	unclear	no	<u>73</u>	33.3% (95% CI 19.6*-49.6*)	87.1% (95% CI 70.2*-94.6*)
R-Biopharm, RIDA[®]QUICK SARS-CoV-2 Antigen (LFA)							
[101] Toptan, NP/OP	Germany	NP/OP	banked	no	67	77.6% (95% CI 64.7*-87.5*)	100% (95% CI 66.4*-100*)
[101] Toptan, unknown	Germany	unclear	banked	no	70	50.0% (95% CI 31.9*-68.1*)	100% (95% CI 90.8*-100*)
SD Biosensor, Standard F (requires reader)							
[94] Porte, NP/OP	Chile	NP/OP	banked	no	64	90.6% (95% CI 75.8-96.8)	96.9% (95% CI 84.3-99.4)
[71] FIND, NP	Brazil	NP	fresh	yes	453	77.5% (95% CI 69.2-84.1)	97.9% (95% CI 95.7-99.0)
[67] Drevinek, NP	Czech Republic	NP	fresh	yes	591	62.3% (95% CI 55.8-68.4)	99.5% (95% CI 98.0-99.9)
[83] Liotti, NP	Italy	NP	banked	no	359	47.1% (95% CI 37.1-57.1)	98.4% (95% CI 96.0-99.6)
SD Biosensor / Roche, Standard Q (LFA)							
[65] Chaimayo, NP/OP	Thailand	NP/OP	banked	no	454	98.3% (95% CI 91.1-100)	98.7% (95% CI 97.1-99.6)
[97] Schwob, NP	Switzerland	NP	fresh	yes	333	92.9% (95% CI 86.4-96.9)	100% (95% CI 98.3*-100*)
[62] Berger, NP	Switzerland	NP	fresh	yes	529	89.0% (95% CI 83.7-93.1)	99.7% (95% CI 98.4-100)
[72] FIND, NP	Brazil	NP	fresh	yes	400	88.7% (95% CI 81.3-93.4)	97.6% (95% CI 95.2-98.8)
[96] Schildgen, LRT	Germany	BAL/TW	unclear	no	<u>73</u>	88.1% (95% CI 74.4*-96.0*)	19.4% (95% CI 7.5*-37.5*)
[76] Igliji, NP	Netherlands	NP	fresh	yes	970	84.9% (95% CI 79.1-89.4)	99.5% (95% CI 98.7-99.8)
[74] Gupta, NP	India	NP	fresh	yes	330	81.8% (95% CI 71.3-89.6)	99.6% (95% CI 97.8-99.9)
[82] Lindner, NP, sc	Germany	NP	fresh	yes	289	79.5% (95% CI 64.5-89.2)	99.6% (95% CI 97.8-100)
[3] Krüger, NP/OP	Germany/England	NP/OP	unclear	no	1263	76.6% (95% CI 62.8-86.4)	99.3% (95% CI 98.6-99.6)
[82] Lindner, AN	Germany	AN/MT	fresh	no	289	74.4% (95% CI 58.9-85.4)	99.2% (95% CI 97.1-99.8)
[81] Lindner, NP, pc	Germany	NP	fresh	yes	180	73.0% (95% CI 58.1-84.3)	99.3% (95% CI 96.0-100)
[64] Cerutti, NP, ER	Italy	NP	unclear	no	185	72.1% (95% CI 62.5*-80.5*)	100% (95% CI 95.6*-100*)
[78] Krüttgen, NP	Germany	NP	banked	no	150	70.7% (95% CI 59.0*-80.6*)	96.0% (95% CI 88.9*-99.2*)
[88] Nalumansi, NP	Uganda	NP	fresh	yes	262	70.0% (95% CI 60.0-79.0)	92.0% (95% CI 87.0-96.0)
[89] Olea-ro, OP	Germany	OP	unclear	no	<u>184</u>	49.4% (95% CI 38.9-59.9)	100% (95% CI 96.3-100)
[64] Cerutti, NP, tr	Italy	NP	fresh	no	145	40.0% (95% CI 5.3*-85.3*)	100% (95% CI 97.4*-100*)
Shenzhen Bioeasy Biotechnology, 2019-nCoV Antigen Rapid Test Kit (requires reader)							
[95] Porte, NP/OP	Chile	NP/OP	banked	no	127	93.9% (95% CI 86.5-97.4)	100% (95% CI 92.1*-100*)
[104] Weitzel, NP/OP	Chile	NP/OP	banked	no	<u>111</u>	85.0% (95% CI 75.6-91.2)	100% (95% CI 89.0-100)
[90] Parada-Ricart, NP	Spain	NP	fresh	yes	172	73.1%* (95% CI 52.2*-88.4*)	85.6%* (95% CI 78.9*-90.9*)
[3] Krüger, NP/OP	Germany	NP/OP	fresh	no	727	66.7% (95% CI 41.7-84.8)	93.1% (95% CI 91.9-94.8)
Siemens Healthineers, CLINITEST[®] Rapid COVID-19 Antigen Test (LFA)							
[89] Olea-ro, OP	Germany	OP	unclear	no	<u>170</u>	54.9% (95% CI 43.4-65.9)	100% (95% CI 96.3-100)

869

870 **Caption:** * Values differ from those provided in the respective manuscript due to missing or contradictory data.
 871 A list including the original data can be found in the Supplement (S4).
 872 Data sets from an underlined author have not undergone peer-review yet (time of data extraction,
 873 28.12.2020).
 874 In data sets with underlined sample sizes the samples were used in head-to-head studies, performing different
 875 Ag-RDTs on the same patient.
 876 Naming convention column "author": number in brackets relates to the list of sources. Letters behind the au-
 877 thor's last name differentiates the data set from other data sets by the same author.
 878 IFU = instructions for use; NP = nasopharyngeal; OP = oropharyngeal; AN = anterior nasal; MT = mid turbine;
 879 LRT = lower respiratory tract; BAL/TW = bronchoalveolar lavage and throat wash; CI = confidence interval; sc =
 880 self-collected; pc = professional-collected; ER = emergency room; tr = travelers.

881 **Table 2:** Summary clinical accuracy data for major Ag-RDTs not included in the meta-analysis

Manufacturer, Ag-RDT	Number of data sets	Sensitivity range	Specificity range	Comments
Becton, Dickinson and Company, BD Veritor™ (requires reader)	3	76.3% to 96.4%	98.7% to 100%	- For the data set reporting 96.4% sensitivity, samples originated from symptomatic patients only and cell culture was used as reference standard
Fujirebio, ESPLINE® SARS-CoV-2 (lateral flow assay)	3	23.5% to 80.7%	100%*	- The data set reporting 23.5% sensitivity used saliva samples (not IFU-conform)
Fujirebio, Lumipulse® G SARS-CoV-2 Ag (requires reader)	2	82.4% to 100%	not provided	- Both data sets originate from the same study - One data set used saliva (sensitivity 82.4%), the other NP samples (sensitivity 100%). For this Ag-RDT, both sample types are IFU conform.
QUIDEL, Sofia SARS Antigen FIA (requires reader)	3	76.8% to 93.8%	100%	- For the data set reporting 76.8% sensitivity, it is not clear whether it was conducted IFU-conform
R-Biopharm, RIDA®QUICK SARS-CoV-2 Antigen (lateral flow assay)	2	50.0% to 77.6%	100%	- Both data sets originate from the same study and were conducted not IFU-conform - For the data set reporting 50.0% sensitivity, the used sample type is not clear. The other used NP/OP samples
Shenzen Bioeasy Biotechnology, 2019-nCov Antigen Rapid Test Kit (requires reader)	4	66.7% to 93.9%	85.6% to 100%	- The data set reporting 85.6% specificity was conducted IFU conform - The data sets reporting highest sensitivity were drawn from just symptomatic patients, for the others symptomatic patients made up more than two thirds of the study population

882

883 *Caption:* * only one data set for specificity was provided

884 IFU = instructions for use; Ag-RDT = antigen rapid diagnostic test; NP = nasopharyngeal; OP = oropharyngeal;

885 AN = anterior nasal.

886

887 Figures

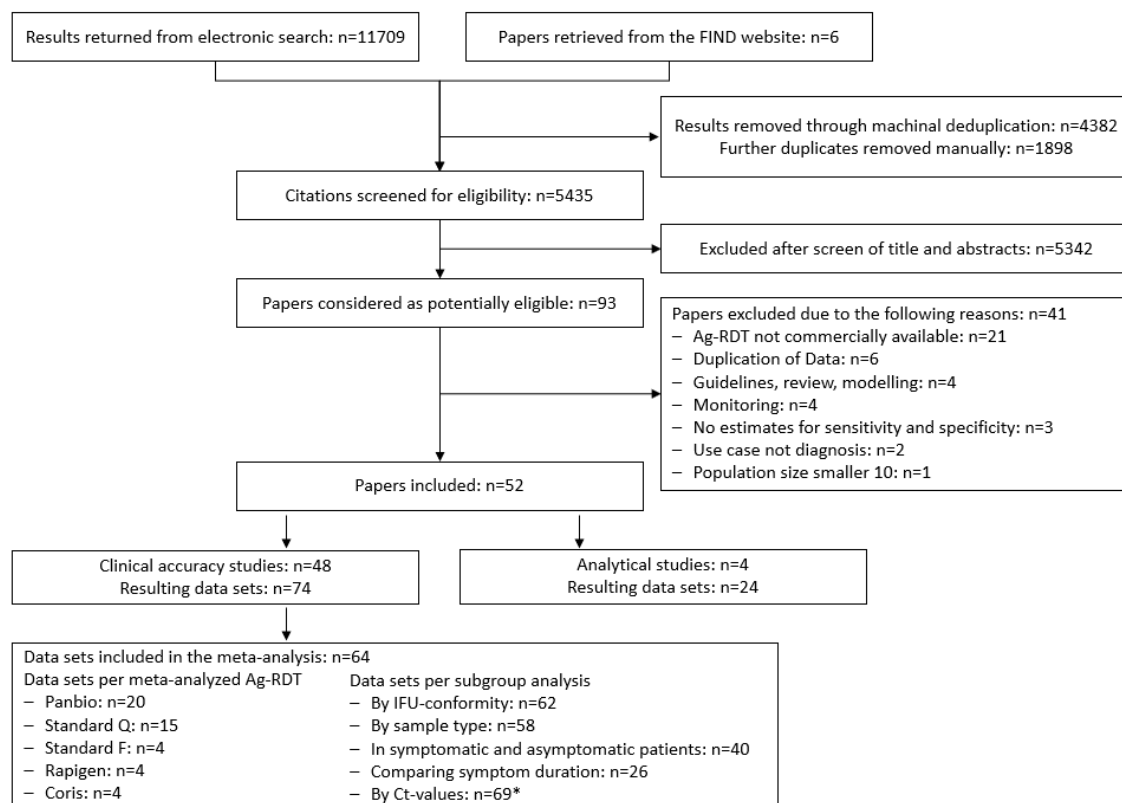
888 Figure 1 PRISMA flow diagram

889 Figure 2 Methodological quality of the clinical accuracy studies

890 Figure 3 Summary forest plot for five meta-analyzed Ag-RDT

891 Figure 4 Summary forest plot for subgroup analysis.

892 Figure 1 - PRISMA flow diagram



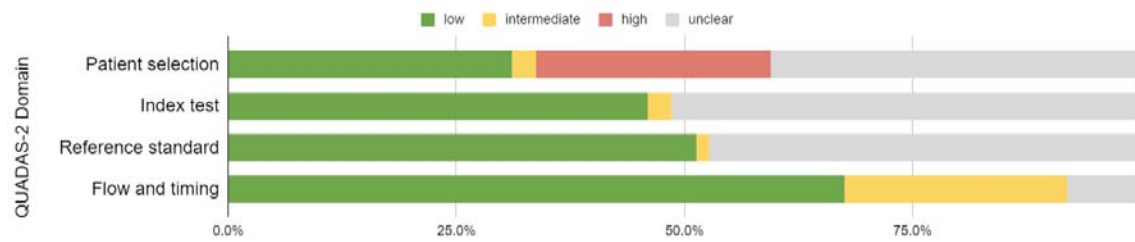
893

894 *Caption:* * some data sets split up data by multiple Ct-values, therefore the subgroup analysis by Ct-values
 895 includes more individual records than the overall amount of meta-analyzed data sets.

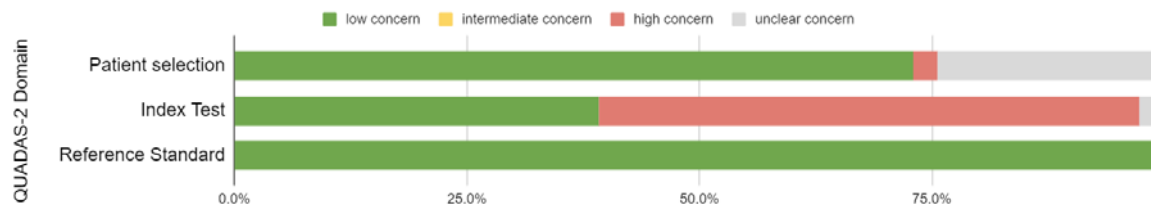
896 Abbreviations: Ag-RDT = antigen rapid diagnostic tests; IFU = instructions for use.

897

898 *Figure 2 - Methodological quality of the clinical accuracy studies*



899 Proportion of studies with low, intermediate, high or unclear risk of bias, %



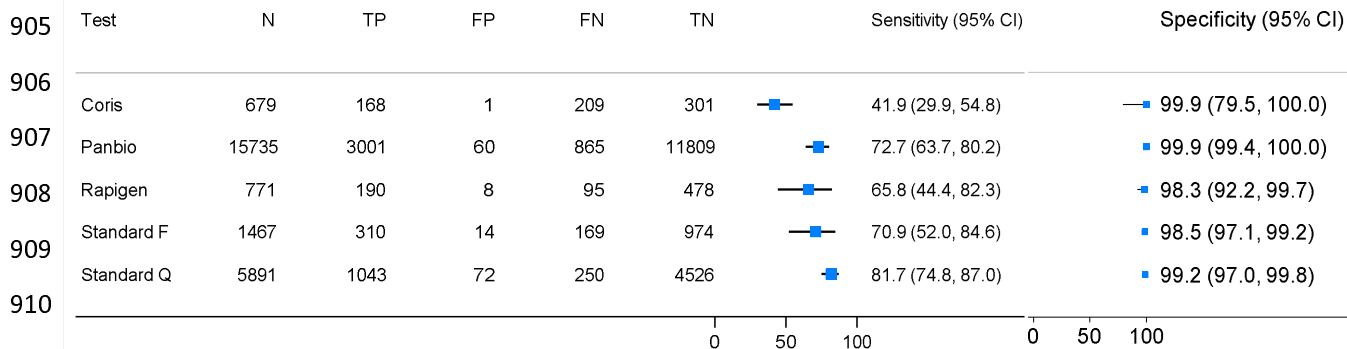
900 Proportion of studies with low, intermediate, high or unclear concerns regarding applicability, %

901

902 *Figure 3 - Summary forest plot for five meta-analyzed Ag-RDT*

903

904



911

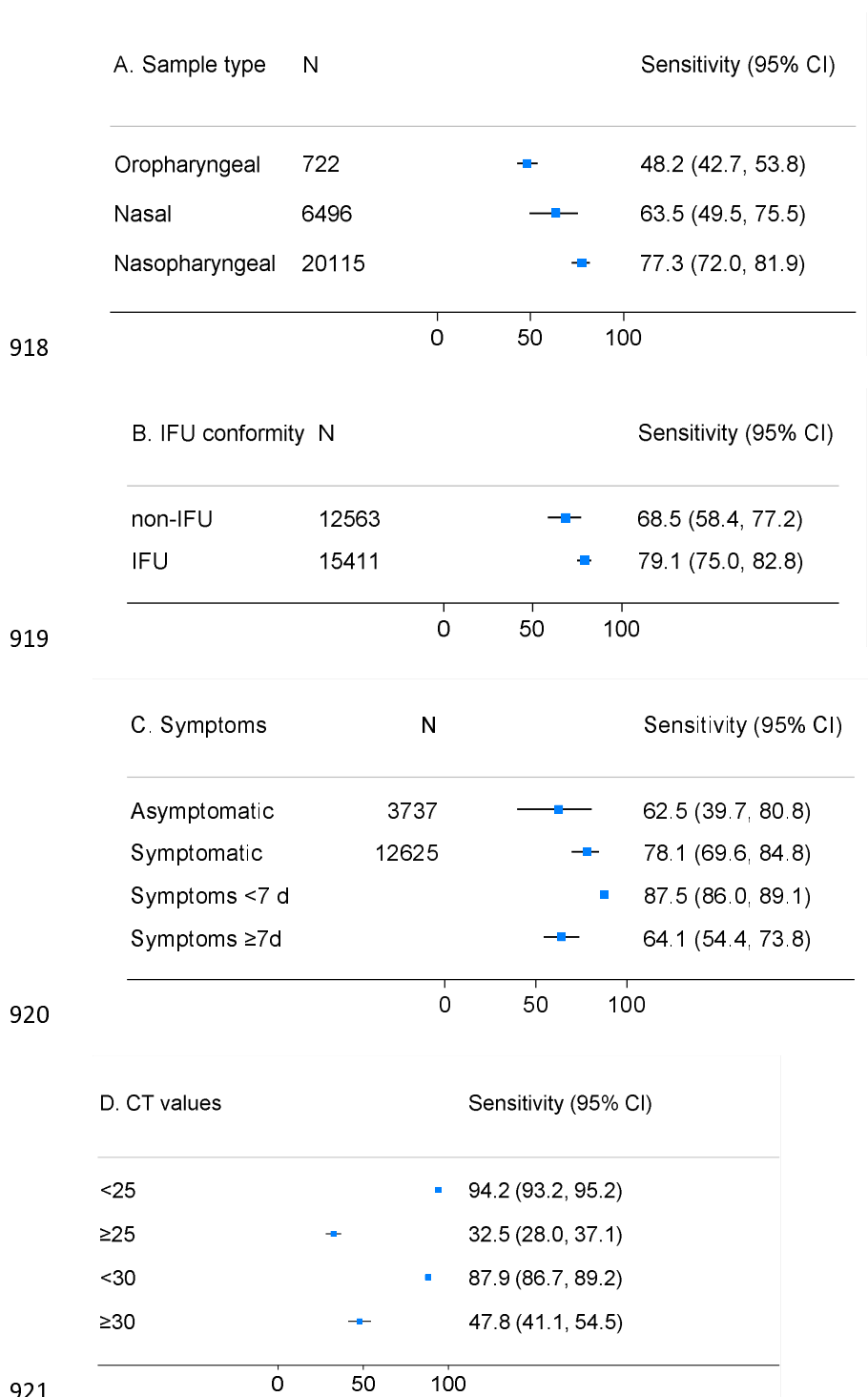
912

913

914 *Caption:* N=sample size; TP = true positive; FP = false positive; FN = false negative; TN = true negative; CI = con-
 915 fidence interval

916

917 Figure 4 - Summary forest plot for subgroup analysis



922 *Caption:* Panel A: Nasopharyngeal includes mixed naso-/oropharyngeal; Nasal includes anterior nasal and mid-
 923 turbinate; Panel B: IFU = instructions for use; Panel C: <7d = below seven days of onset of symptoms; ≥7d =
 924 equal and greater than seven days of symptoms; N= sample size; CI = confidence interval

925 The samples size (N) and cell counts (True positive, etc.) were included in forest plots where data was available.
 926 However, these numbers were not reported consistently for many sub-groups.
 927