

SUPPLEMENTARY INFORMATION

Group IIA Secreted Phospholipase A₂ Plays a Central Role in the Pathobiology of COVID-19

SUPPLEMENTARY FIGURES

Figure S1

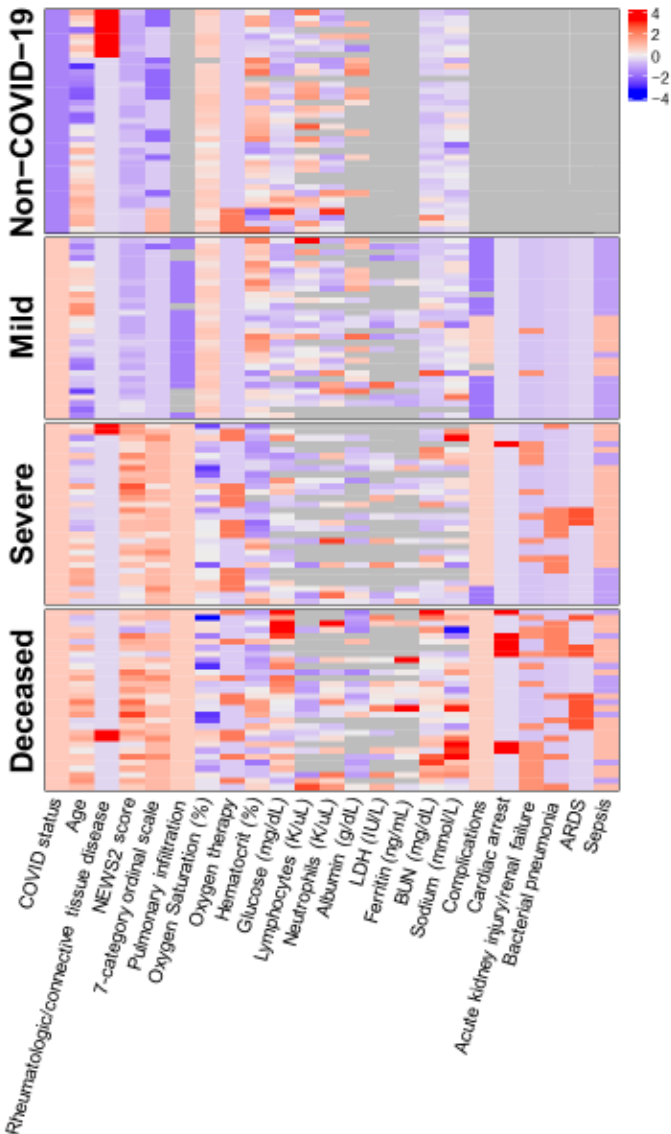


Figure S1. Clinical Indices and Disease Status. Clinical indices that vary significantly ($FDR < 0.05$, F-test) across 4 patient groups are shown in a heatmap, with blue to red representing low to high values of each index, and the color intensity representing the magnitude of value (mean-centered, scaled by the standard deviation, and log-transformed with non-Gaussian distribution). Missing values are shown in grey.

Figure S2

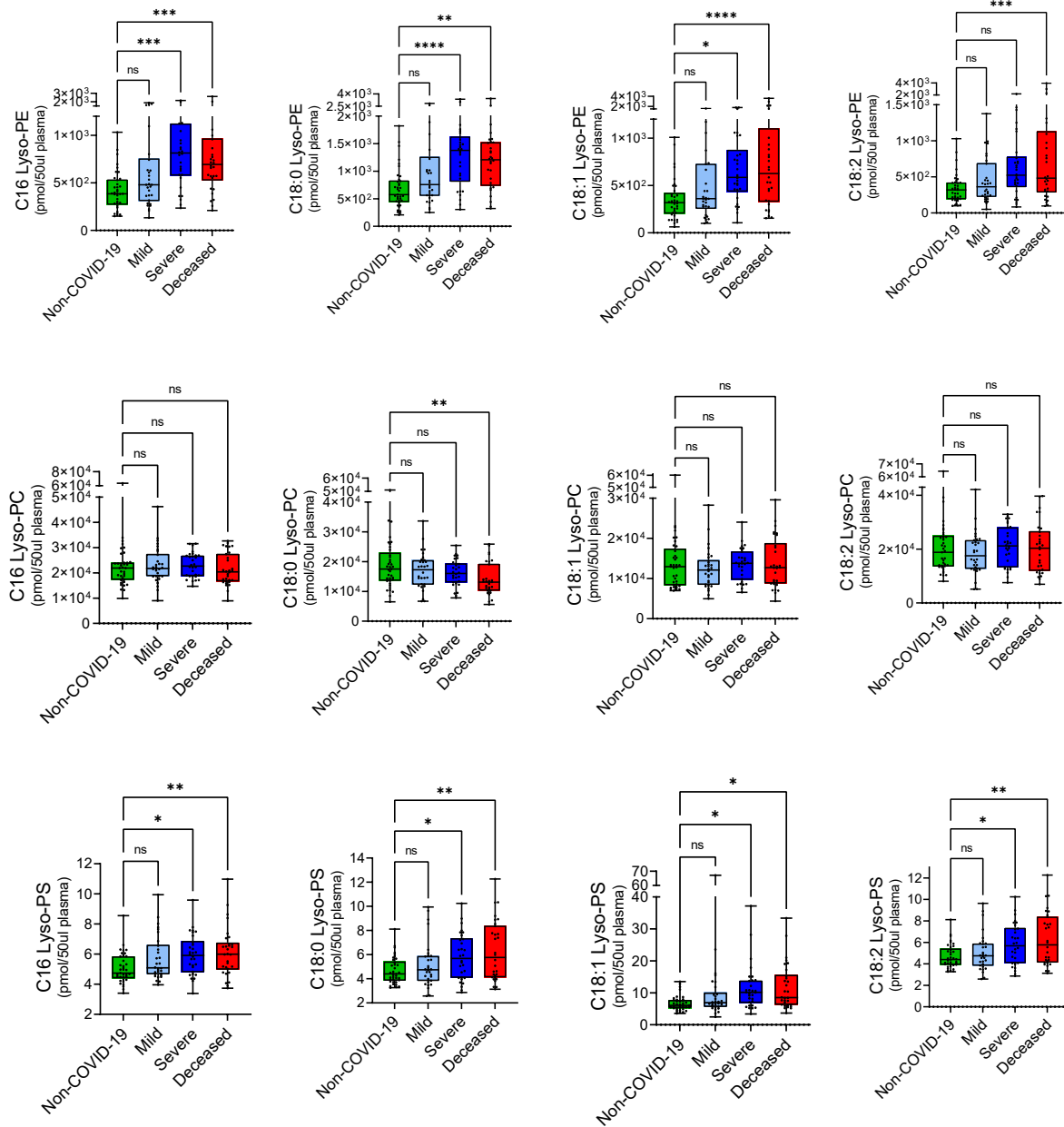


Figure S2. Targeted Lyso-phospholipid (Lyso-PL) Analysis. Lyso-PLs were identified as top molecules of interest from the qualitative untargeted lipidome data set. Samples were re-analyzed utilizing lyso-PL standards in a targeted lyso-PL method. Asterisks indicate significance by ANOVA (1-way ANOVA with Dunnett multiple comparison): * $p < 0.05$; ** $p < 0.01$; *** $p < 0.001$; **** $p < 0.0001$

Figure S3

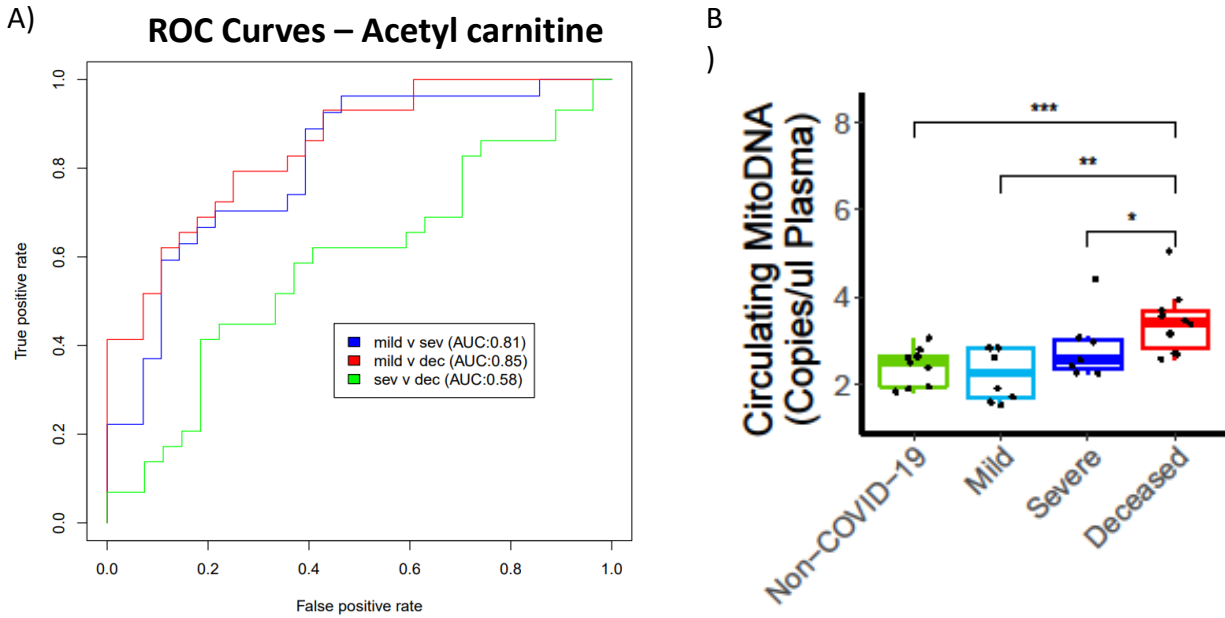


Figure S3. Markers of Mitochondrial Dysfunction. A) ROC curves demonstrate the performance of acetylcarnitine as a predictor of disease status. B) Mitochondrial DNA was quantified in a selected subset of patients (n=34; 9 non-COVID-19, 8 mild, 7 severe, and 10 deceased COVID-19 patients). Summed copy numbers of genes for human cytochrome C and cytochrome C oxidase subunit III are shown. Data are log transformed with one-sided Wilcoxon test significance indicated as: * p<0.05; ** p<0.01; *** p<0.001.