

Inclusion of cycle threshold (CT) values when reporting SARS-CoV-2 RT-PCR results improves clinical Interpretation in suspected and confirmed COVID-19

1

Peter V. Coyle MD,¹ pcoyle@hamad.qa*
Naema Hassan Al Molawi PhD,¹ nalmolawi@hamad.qa
Mohamed Ali Ben Hadj Kacem MD, ¹ mkacem@hamad.qa
Reham Awni El Kahlout MSc, ¹ relkahlout2@hamad.qa
Einass Al Kuwari MD, ¹ ealkuwari@hamad.qa
Abdullatif Al Khal MD, ¹ aalkhal@hamad.qa
Imtiaz Gilliani MSc,¹ igilliani@hamad.qa
Andrew Jeremijenko MD, ¹ andrewjenko@hotmail.com
Hatoun Saeb MSc,² hsaeb@moph.gov.qa
Sheikh Mohammad Al Thani MD, ² malthani@moph.gov.qa
Roberto Bertollini MD, ² rbertollini@moph.gov.qa
Hanan F. Abdul Rahim PhD, ² hanan.arahim@qu.edu.qa
Hiam Chemaitelly MSc,^{4,5} hsc2001@qatar-med.cornell.edu
Patrick Tang MD,⁶ ptang@sidra.org
Ali Nizar Latif MD, ¹ alatif2@hamad.qa
Saad Al Kaabi MD,¹ saadalkaabi@hamad.qa
Muna A. Rahman S. AlMaslamani MD,¹ malmaslamani@hamad.qa
Brendan David Morris MSc,¹ bmorris@hamad.qa
Nasser Al-Ansari MD,¹ nalansari2@hamad.qa
Anvar Hassan Kaleeckal MSc, ¹ akaleeckal@hamad.qa
Laith J. Abu Raddad PhD,^{4,5,7} lja2002@qatar-med.cornell.edu

¹ *Hamad Medical Corporation, Doha, Qatar*

² *Ministry of Public Health, Doha, Qatar*

³ *College of Health Sciences, QU Health, Qatar University, Doha, Qatar*

⁴ *Infectious Disease Epidemiology Group, Weill Cornell Medicine-Qatar, Cornell University, Doha, Qatar*

⁵ *World Health Organization Collaborating Centre for Disease Epidemiology Analytics on HIV/AIDS, Sexually Transmitted Infections, and Viral Hepatitis, Weill Cornell Medicine-Qatar, Cornell University, Qatar Foundation – Education City, Doha, Qatar*

⁶ *NOTE: This preprint reports new research that has not been certified by peer review and should not be used to guide clinical practice.*

⁶*Sidra Medicine, Doha, Qatar.*

⁷*Department of Population Health Sciences, Weill Cornell Medicine, Cornell University, New York, New York, USA*

**Corresponding author*

Study approved by Hamad Medical Corporation Institutional Review Board.

Conflict of Interest Authors have No Conflicts of Interest to declare.

2 **Introduction** The Cycle Threshold (CT) value in Real-time Polymerase Chain Reaction (RT-
3 PCR) is where a target specific amplification signal becomes detectable and can infer viral
4 load, risk of transmission and recovery in SARS-CoV-2 infections. Adoption into routine
5 practice is however uncommon.

6 **Gap Statement** The lack of inclusion of CT values when reporting SARS-CoV-2 RT-PCR results
7 in routine practice.

8 **Aim** To use CT values when reporting SARS-CoV-2 RT-PCR results in Qatar to aid clinical
9 interpretation and patient management.

10 **Methodology** Routine CT values across 3 different RT-PCR platforms were reviewed for
11 concordance at presentation and clearance in patients with COVID-19. An Indicative
12 Threshold of CT 30 based on viral clearance kinetics categorized low and high CT values.

13 **Results** There was very high Correlation and Kappa Score agreement between the different
14 gene targets in each platform ($p < 0.001$). Using the Indicative Threshold it was possible to
15 autoverify and add average CT values and append Interpretive Comments to all RT-PCR
16 reports. The new reporting algorithm impacted immediately and safely on: physician
17 interpretation of SARS-CoV-2 results; patient management; staff surveillance protocols;
18 length of stay in quarantine; a redefinition of patient recovery.

19 **Conclusion** Incorporation of CT values into routine practice is possible across different RT-
20 PCR platforms and adds useful information for patient management. The use of an
21 Indicative Threshold and interpretive comments improves clinical interpretation of the
22 result and could be a model for reporting other respiratory infections. The current accepted
23 practice of withholding CT values should be reviewed by the profession, accreditation
24 bodies and regulators.

Key Words Cycle Threshold; Real-time Polymerase Chain Reaction (RT-PCR); SARS-CoV-2;
COVID-19.

25 Introduction

26 The World Health Organization (WHO) reported: clusters of viral pneumonia on December
27 31, 2019 in Wuhan China; isolation of SARS-CoV-2 on January 9, 2020; definition of
28 Coronavirus Infectious Disease 2019 (COVID-19) caused by the virus; a Public Health
29 Emergency of International Concern on January 30, 2020; a pandemic on March 11, 2020
30 [1]. WHO advised the use of Reverse Transcriptase Polymerase Chain Reaction (RT-PCR) on
31 combined nasopharyngeal / oropharyngeal swabs (NPS/OPS) for diagnosis of COVID-19 and
32 two negative RT-PCRs 24 hours apart for defining recovery[2].

33 RT-PCR amplifies over 40 to 45 cycles, with the cycle threshold (CT) value being determined
34 where the fluorescent signal of a test exceeds the background signal of controls. The CT
35 value is inverse to the viral load, with clearance indicated by rising CTs. This is because more
36 PCR cycles are required to detect the virus. Using CTs in estimating viral load and
37 transmission risk is not routine because of perceived lack of platform to platform
38 concordance and the absence of a direct link between CT values and clinical outcome.

39 A positive result for SARS-CoV-2 is defined by the manufacturer-specified CT values for one
40 or more genes, with an inconclusive result reported where the combination of reactive
41 genes fails to meet the definition.

42 After infection SARS-CoV-2 has a short latent period where virus is undetectable for about 4
43 days, followed by a period of high viral load coinciding with the pre-symptomatic and
44 symptomatic transmission phase, lasting for another four days, and then followed by
45 prolonged viral RNA shedding [3-8]. The timing of transmission varies with the data source
46 with Ganyani reporting the generation interval (time between infection events in an
47 infector-infectee pair) as 5.20 days (95% CrI 3.78–6.78) and 3.95 days (95% CrI: 3.01–4.91)
48 for two separate outbreaks [9].

49 At the onset of symptoms patients present with high viral loads (<CT 20) which
50 subsequently fall in both upper and lower respiratory tracts, with higher loads in lower
51 airways than those seen in NPS/OPS specimens [10]. Detection of low level viral RNA can
52 last for weeks to months but transmission does not typically exceed 10 days from first PCR
53 or symptom onset in mild infections and 20 days in severe illness [10-12]. Prolonged
54 shedding and categorical reporting (positive or negative) can risk inferring patients are
55 infectious when they are in recovery, leading often to unnecessary extension of quarantine.

56 Attempts to use CT values as a surrogate of viral load and by extrapolation of disease
57 severity have been reported but not widely adopted. Wishaupt [13] showed low CT values
58 in common respiratory viral infections, including seasonal human coronaviruses (HCoV),
59 were associated with hospitalisation, increased oxygen requirement and longer lengths of
60 hospital stay. Spencer categorised influenza infections on the basis of an arbitrarily set CT

61 threshold, separating them into low and high CT values to differentiate high and low viral
62 loads respectively [14]. They confirmed the low CT cohort was seen primarily in younger
63 patients (3 – 8y), symptomatic elderly patients and presentation within two days of
64 symptom onset, indicating early acute infection. A similar pattern of CT values was reported
65 in children with *Bordetella pertussis* with low values indicating high bacterial loads in
66 unvaccinated children with life threatening infections; bacterial loads were three orders of
67 magnitude higher than those seen in vaccinated children [15].

68 CT values have also been used to estimate the period of infectivity in COVID-19. Bullard [11]
69 investigated virus recovery from symptom onset and found that virus could not be isolated
70 after 8 days or CT values > 24. Centers for Disease Control and Prevention (CDC) [16] and La
71 Scola [12] reported virus recovery was restricted to the first 8 days of a symptomatic
72 infection and CT values <33. Wolfe [10] and van Kampen [17] found viral recovery
73 correlated with high viral loads and by implication low CT values, with the observation that
74 viral recovery in patients with severe disease could be prolonged [17]. Time based
75 prediction of infectiousness based on virus culture is more consistent than individual CT
76 thresholds although likely to overestimate the period of infectivity for most people.

77 Adoption of CT value reporting into routine practice faces hurdles associated with
78 regulatory bodies and accreditation requirements that look for precise validation of clinical
79 interpretation of individual CT values on each platforms. However not reporting CT values
80 deprives physicians and patients of valuable information for interpreting the meaning of a
81 positive result. In the current study three result categories were reported based on
82 manufacturer guidance from the respective CT values of each gene target: positive, negative
83 and inconclusive. A follow-up sample was requested where an inconclusive test result was
84 reported, and CT values were not included.

85 To meet test demand in Qatar with a population of 2.8 million, three platforms - Roche,
86 Thermo-Fisher and Cepheid, respectively amplifying 2, 3 and 2 gene targets, were used for
87 SARS-CoV-2 RT-PCR. A review of their respective assay performance was undertaken to see
88 whether CT values could be safely added to reporting and improve interpretation of SARS-
89 CoV-2 results.

90

91 **Methods**

92 **RT-PCR Assay Platforms** All assays were pre-validated before use in line with the College of
93 American Pathologists accreditation standards. Each platform and reagent combination was
94 analysed for comparative amplification kinetics of the respective gene targets. The systems
95 in use prior to the introduction of CT reporting were: (a) Automated Platforms - the Roche
96 cobas® 6800 system using the cobas® SARS-CoV-2 Test targeting the E and orf1a/b genes
97 (Roche, Switzerland) and the Xpert® Xpress SARS-CoV-2 targeting the E and N genes

98 (Cepheid, USA); (b) Manual platforms - EZ1 (QIAGEN, USA) and QIASymphony (QIAGEN,
99 USA) extraction with thermal cycling using TaqPath™ PCR COVID-19 Combo Kit targeting
100 the N, S and orf1a/b genes (Thermo Fisher Scientific, USA) on ABI 7500 thermal cyclers
101 (Thermo Fisher Scientific, USA).

102 **Thermal Cycling CT Kinetics** A total of 173,557 individual CT values on 148,066 infected
103 persons across the Roche, Thermo-Fisher and Cepheid platforms were analysed for
104 concordance using routine CT values from the respective instruments. Sequential samples
105 on the Roche and Thermo Fisher platforms were also reviewed to establish the viral kinetics
106 associated with viral clearance during recovery.

107 **Indicative Threshold For Reporting CT Values** By reference to observed clearance on the
108 respective platforms and publications linked to reduced transmission, a threshold below and
109 above which transmission was more or less likely was established. The time taken to reach
110 average CT values from initial infection to viral clearance was reviewed and the average CT
111 values at day 14 was taken as a potential Indicative Threshold (IT) associated with reduced
112 transmission.

113 **Reporting Change** Reporting was redesigned with reference to the Indicative Threshold.
114 Individual gene CT values with their alphanumeric results were run through a flat file
115 interface to the mainframe computer. An average CT value was automatically calculated,
116 and the resulting categories added based on both the average and individual CT values. Four
117 result categories were used: 1) positive 2) reactive, (CT>30); 3) negative; 4) inconclusive. An
118 interpretive comments table was designed and automatically appended at auto-verification.
119 The specimen type with individual tracking times at each stage from collection to reporting
120 was used to calculate turnaround times each day. The four reported categories were also
121 interfaced in real time to the National Dashboard, for daily review, and were used to trigger
122 a colour change on Qatar's national COVID-19 track and trace EHTERAZ application.

123 **Follow-up Audit of Enhanced Reporting**

124 Viral CTs in positive samples within four days from a reactive, inconclusive or negative result
125 were reviewed and plotted as arbitrary log values $(CT_{40} - CT \text{ value})/3.3$ against the day of
126 becoming positive. Cross referencing the four result categories against a seroprevalence
127 research database was also used to determine seroprevalence in each category - Table 1.
128 Two categories of positive result were cross referenced: those with one or > one RT-PCR
129 positive result.

130 **Table 1 Specimen numbers per RT-PCR reporting category and seroprevalence database**

Reporting Category	Specimen Number	Period Covered
Positive	116213	02/04/2020 - 25/08/2020

Reactive	11291	24/06/2020 - 25/08/2020
Inconclusive	32678	08/03/2020 - 02/09/2020
Negative	745673	04/03/2020 - 29/08/2020
Seroprevalence	149878	28/06/2020 -23/08/2020

131

132 **Statistics**

133 Spearman Rank Coefficient and Kappa scores were used for comparison of CT values across
134 each platform. Box-plots of viral kinetics with median and Inter-Quartile ranges were used in
135 follow-up positive samples from Day 1 to Day 4 following a negative result.

136

137 **Results**

138

139 **CT Kinetics across Thermal Cycling**

140 The assay performance during the period of the study was acceptable in internal and
141 external proficiency panel assessments in line with the College of American Pathologists
142 accredited Quality Assurance program of the laboratory.

143 The CT values across the different gene targets for each of the three platforms showed
144 good agreement as measured by Spearman correlation coefficient and Kappa scores –
145 Table 2, in keeping with acceptable performance during routine practice.

146

147 **Table 2 Correlation of Gene Targets Across The Roche, Thermo Fisher and Cepheid**
148 **Platforms**

Test type	Pearson correlation coefficient	p-value	Spearman correlation coefficient	p-value	Positive agreement (%)	Negative agreement (%)	Overall agreement (%)	Kappa	p-value
Thermo Fisher									
N protein-S protein	0.967	<0.001	0.974	<0.001	98.2%	87.7%	94.0%	0.872	<0.001
N protein-ORF1ab	0.970	<0.001	0.974	<0.001	96.9%	91.4%	94.7%	0.889	<0.001
S protein-ORF1ab	0.978	<0.001	0.984	<0.001	95.2%	98.2%	96.4%	0.923	<0.001
Roche									
Roche Target 1-2	0.995	<0.001	0.997	<0.001	100.0%	84.9%	94.8%	0.880	<0.001
Xpert									
Xpert E-Xpert N	0.573	<0.001	0.721	<0.001	100.0%	66.7%	83.0%	0.662	<0.001

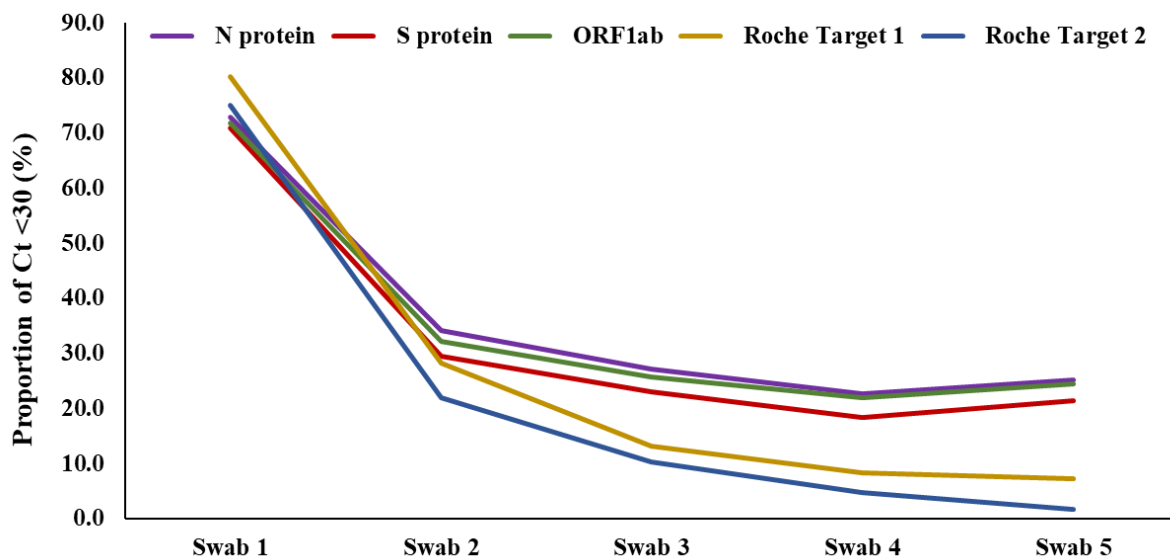
149 PCR, polymerase chain reaction; Prop, proportion.

150

151 The Roche and Thermo Fisher assays confirmed an early decline in viral load, as indicated
152 by rising CT values across each platform, followed by a prolonged period of low level
153 detection of viral RNA - Figure 1. The rise in CT values observed during the recovery phase
154 was similar for each gene target, with the Roche assay detecting more prolonged shedding
155 at a higher CT level than the Thermo Fisher assay.

156

157 **Figure 1 Progression of proportion of CT <30 over number of swabs tested**



158

159

160

161

162 Indicative CT Threshold

163

164 Taking the lowest CT value as indicating the start of detectable virus by RT-PCR, and
165 assuming that infected persons spend on average a total PCR positivity duration of four
166 weeks (28 days), as informed by current evidence [18, 19], Figure 2 shows the number of
167 days spent at or below each CT value across the different platforms; a CT 28 value equated
168 to Day 14. The Indicative Threshold selected for defining the new reactive reporting
169 category was set at CT>30 to arbitrarily build in an additional margin where the likelihood of
170 transmission was deemed low and being in recovery high for most recovering patients.

171

172

173

174

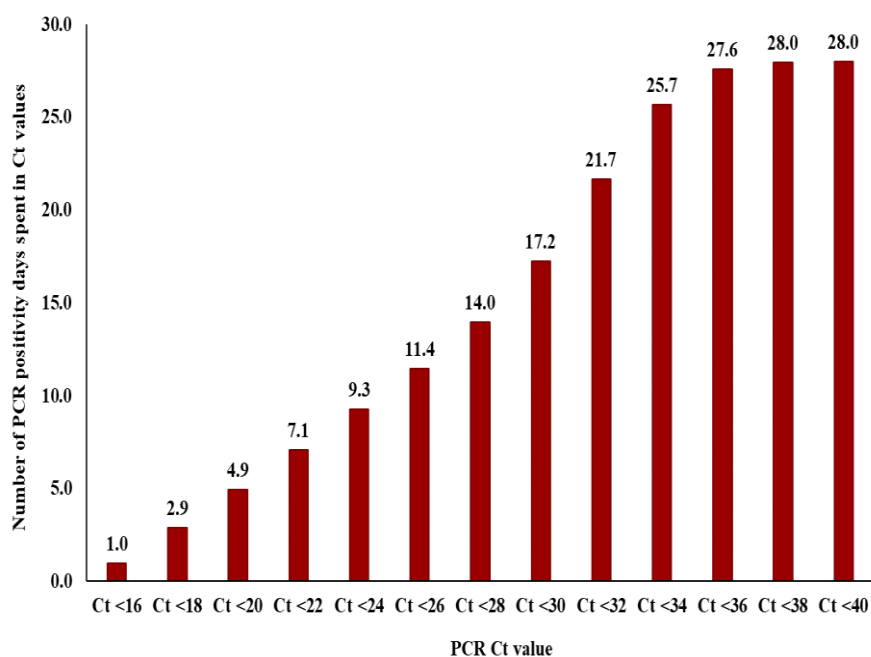
175

176

177

178

179 **Figure 2 RT-PCR positivity days by Cycle Threshold value**
180



181
182

183

184 **Reporting using the Indicative Threshold** The use of an Indicative Threshold of CT>30
185 allowed the use of 4 reporting categories. Interpretive Comments based on the kinetics of
186 SARS-CoV-2 replication and likely COVID-19 clinical presentation were added at
187 autoverification of results, Table 3. Comments emphasised the need for repeat testing in an
188 outbreak and the need for clinical assessment of patients irrespective of the CT values.

189

190 **Table 3 – Interpretive Comments for Enhanced Reporting**

191

Interpretive Comments for NPS/OPS Swab Results			
Positive (CT ≤30)	Reactive (CT >30)	Negative	Inconclusive
SARS-CoV-2 RNA detected – regarded as potentially infectious up to 10 days from symptom onset or 1st PCR positive; prolonged shedding seen in severe cases	In asymptomatic patients usually seen in recovery phase which can be prolonged.	SARS-CoV-2 virus RNA NOT detected – excludes COVID-19.	In asymptomatic patients usually seen in recovery phase which can be prolonged. Repeat if detected in pre-procedure screening.
Low and high CT values indicate high and low viral loads respectively	Repeat where clinical suspicion remains / in an outbreak / after contact with a case.	Repeat where clinical suspicion remains / in an outbreak / after contact with a case	Repeat where clinical suspicion remains / in an outbreak / after contact with a case
Clinical assessment essential regardless of CT value	Clinical assessment essential regardless of CT value	Clinical assessment essential regardless of CT value	Clinical assessment essential regardless of CT value

192

193

194

195

196

197

198

199 **Confirmation of COVID-19 after Follow-up of RT-PCR Negative Samples**

200 In review of patients initially reported with non-positive result (reactive, inconclusive or
201 negative) it was found that a positive ($CT \leq 30$) result was reported within 10 days in 5.2%,
202 1.9% and 7.1% of reactive, negative and inconclusive results respectively; acute early
203 infections, defined by a $CT < 20$, were reported in 0.2%, 0.8% and 1.6% of cases – Table 4.

204

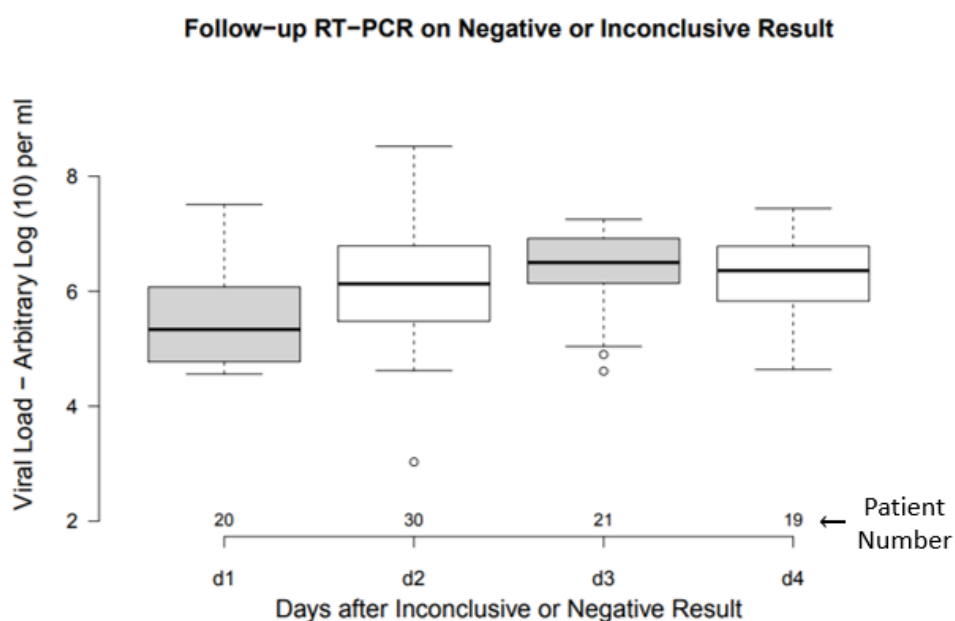
205 Table 4 Follow-up of patients initially reported reactive, inconclusive or negative

Category	CT<20	CT<30
Reactive	26 / 11291 (0.2%)	591 / 11291 (5.2%)
Negative	2515 / 328095 (0.8%)	6429 / 328095 (1.9%)
Inconclusive	460 / 29104 (1.6%)	2066 / 29104 (7.1%)

206

207 Within 4 days of a negative result a rapid increase in load was seen on day 1 which
208 continued to rise on days 2 and 3 in keeping with the predicted transition from the
209 asymptomatic to a symptomatic phase of infection – Figure 3 [3].
210

211 **Figure 3 Transition from Non-detectable to Detectable After Negative or Inconclusive**
212 **Results**



213

214

215

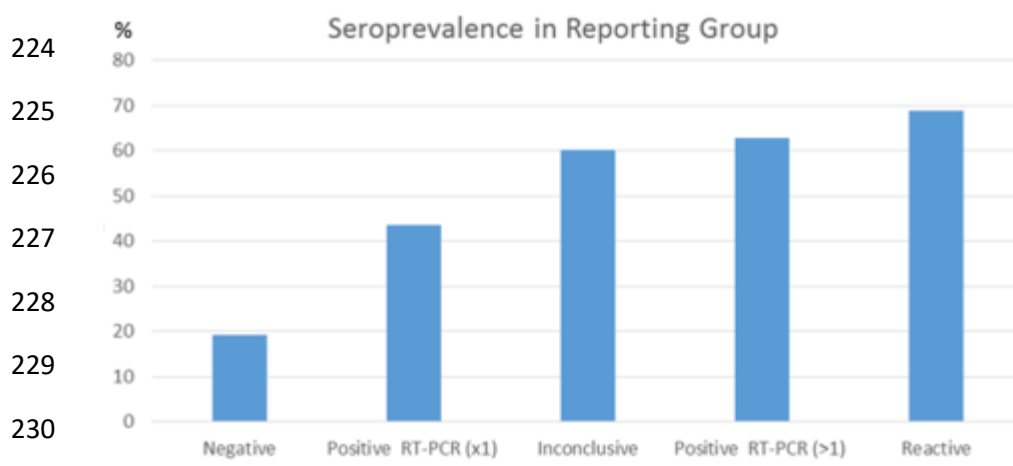
216 Seroprevalence by Reporting Category

217 The respective seroprevalence of patients in the different Reporting Categories when cross-
218 referenced against the Seroprevalence database is shown in Figure 4. There was a trend to
219 higher seroprevalence respectively for negative, single positive RT-PCR, inconclusive, >1
220 positive RT-PCR and reactive.

221

222 **Figure 4 Seroprevalence associated with Reporting Category**

223



230

232 Discussion

233 The decision to include CT values in routine reporting of COVID-19 in Qatar was felt to be
234 possible following a review of the respective test platforms and was communicated in
235 advance to physicians and Public Health teams dealing with the outbreak. While exclusion
236 of CT values is normal practice when reporting RT-PCT results, the implications of a SARS-
237 CoV-2 result are critical to clinical management and Public Health decisions. A confirmed
238 infection can present over a 10 Log₁₀ range, making categorical reporting of results as
239 positive or negative restrictive and open to misinterpretation. Reporting of CT values with
240 interpretive comments helped increased the interpretation and safety of reporting and
241 could be modified to reflect changes in the clinical knowledge base of the condition.

242

243 Not reporting of CT values stems from assumed lack of platform to platform concordance
244 and lack of specific outcomes linked to individual CT values [20]. The approach described
245 here does not define absolute thresholds or pre-set CT values for clinical interpretation. The
246 Indicative Threshold categorised results around a CT value based on the viral kinetics of
247 clearance. This along with the interpretive comments allowed inference of the phase of
248 infection and potential for continuing risk of transmission. Since most RT-PCR platforms

249 provide similar amplification profiles, as demonstrated in Figure 2, the use of an Indicative
250 Threshold is a flexible way to allow reporting across platforms. Correlation of new with
251 existing platforms can be formally undertaken and this is now part of our routine pre-use
252 validation.

253

254 The approach described could be applied to other respiratory infections. Curran reported
255 CT values for *Bordetella pertussis* where low CT values were seen in unvaccinated children
256 with Whooping Cough compared to those who had received the vaccine (mean CT 23 versus
257 mean CT 33; $p > 0.001$); Interpretive Comments were not reported [15]. These low CT
258 *Bordetella* infection in pre-vaccinated children gives rise to potentially life threatening
259 infections which are associated with a significant transmission risk to unvaccinated staff and
260 family.

261

262 While the seroprevalence results in Figure 4 indicated that most Reactive and Inconclusive
263 reports were in keeping with a previous SARS-CoV-2 infection rather than a false positive
264 result, in a small number of cases they indicated acute early infection – Table 4. Here ninety
265 patients with confirmed infection immediately following a negative result showed a rapid
266 increase in viral load in-keeping with a transition from latent to promiscuous replication as
267 described in the predictive model of Li [3]. Reporting CT values in these situations provides
268 clinicians with additional information for informing their differential diagnosis.

269

270 The introduction of CT reporting saw a fall in enquiries to the specialist COVID-19 advisory
271 call centre that had been established in Qatar for COVID-19 (John Mitchel personal
272 communication). It also led to a reduction in enquiries from front line clinical staff to
273 virology (in the author's personal experience). In addition a group of microbiology
274 consultants providing interpretation advice to clinical teams, was considered no longer
275 required, and they were able to return to routine duties.

276 For patient admission and discharge policy the new reporting provided an objective
277 categorisation for assisting patient flow that was used for admission, transfer and discharge
278 from COVID and non-COVID designated hospitals respectively. This increased flexibility
279 improved the efficiency of a sometimes over stretched service.

280 Use of CT values also helped triage arrangements for quarantine. WHO guidelines for 2
281 negative RT-PCR results 24 hours apart often extended the period of quarantine for
282 confirmed infection beyond 14 days. This occurred because of the prolonged shedding seen
283 in COVID-19 and a reluctance to discharge patients with a positive result[2]. Reporting CT
284 values with Interpretive comments linked to the CDC time-based discontinuation of
285 transmission precautions allowed a more coherent discharge policy. While CDC guidelines
286 advocated a 10 day period from symptoms or first positive PCR [21], the Indicative
287 Threshold was aligned to a more precautionary 14 day estimate. These arrangements
288 provided a better definition of recovery and as a result the numbers of recovered patients
289 rose steeply.

290

291 The need for and duration of quarantine for patients with a Reactive result was reduced
292 from 14 to 7 days as these patients were deemed suitable for home self-isolation. This new

293 policy reduced the numbers in hotel or hospital quarantine and allowed individuals and
294 families a significant financial saving and better well-being by avoiding or reducing the need
295 for hotel quarantine accommodation that was introduced in response to the pandemic.
296

297 The policy also supported the country's tracking and tracing application EHTERAZ (meaning
298 PRECAUTION) which is a contact tracing application installed on mobile devices used by
299 individuals when leaving their homes. EHTERAZ defines 4 categories of health status by
300 colour: Green – no current positive result; Yellow – in quarantine; Grey – suspected or
301 exposed; Red – currently positive. The new reactive category allowed release of people from
302 quarantine to home isolation with a change of status from Red to Yellow. From a safety
303 perspective this was also supported by a report from the Korean Centers for Disease
304 Control that confirmed patients with on-going positive RT-PCR were not a transmission risk
305 [22].
306

307 **Conclusion** The use of CT values and interpretive comments in routine reporting improved
308 understanding of SARS-CoV-2 results and impacted on patient management and Public
309 Health delivery. The current accepted practice of withholding CT values should be reviewed
310 by the profession, accreditation bodies and regulators.
311

312 References

- 313 1. World Health Organization: **Timeline of WHO's response to COVID-19**. In., vol.
314 <https://www.who.int/news/item/29-06-2020-covidtimeline>; 2020: Accessed on 9
315 September 2020; <https://www.who.int/news/item/2029-2006-2020-covidtimeline>.
- 316 2. World Health Organization: **Laboratory testing of 2019 novel coronavirus (2019-**
317 **nCoV)in suspected human cases: interim guidance, 17 January 2020**. Geneva: World
318 Health Organization; 2020.
- 319 3. Li R, Pei S, Chen B, Song Y, Zhang T, Yang W, Shaman J: **Substantial undocumented**
320 **infection facilitates the rapid dissemination of novel coronavirus (SARS-CoV2)**.
321 *Science* 2020, **368**(6490):489-493.
- 322 4. Lauer SA, Grantz KH, Bi Q, Jones FK, Zheng Q, Meredith HR, Azman AS, Reich NG,
323 Lessler J: **The Incubation Period of Coronavirus Disease 2019 (COVID-19) From**
324 **Publicly Reported Confirmed Cases: Estimation and Application**. *Annals of internal*
325 *medicine* 2020, **172**(9):577-582.
- 326 5. World Health Organization: **Report of the WHO-China Joint Mission on Coronavirus**
327 **Disease 2019 (COVID-19)**. Available from :[https://www.who.int/docs/default-](https://www.who.int/docs/default-source/coronaviruse/who-china-joint-mission-on-covid-19-final-report.pdf)
328 [source/coronaviruse/who-china-joint-mission-on-covid-19-final-report.pdf](https://www.who.int/docs/default-source/coronaviruse/who-china-joint-mission-on-covid-19-final-report.pdf).
329 **Accessed on March 10, 2020**. In.; 2020.
- 330 6. Rothe C, Schunk M, Sothmann P, Bretzel G, Froeschl G, Wallrauch C, Zimmer T, Thiel
331 V, Janke C, Guggemos W *et al*: **Transmission of 2019-nCoV Infection from an**
332 **Asymptomatic Contact in Germany**. *The New England journal of medicine* 2020,
333 **382**(10):970-971.
- 334 7. Zou L, Ruan F, Huang M, Liang L, Huang H, Hong Z, Yu J, Kang M, Song Y, Xia J *et al*:
335 **SARS-CoV-2 Viral Load in Upper Respiratory Specimens of Infected Patients**. *The*
336 *New England journal of medicine* 2020, **382**(12):1177-1179.
- 337 8. He X, Lau EHY, Wu P, Deng X, Wang J, Hao X, Lau YC, Wong JY, Guan Y, Tan X *et al*:
338 **Temporal dynamics in viral shedding and transmissibility of COVID-19**. *Nature*
339 *medicine* 2020, **26**(5):672-675.
- 340 9. Ganyani T, Kremer C, Chen D, Torneri A, Faes C, Wallinga J, Hens N: **Estimating the**
341 **generation interval for coronavirus disease (COVID-19) based on symptom onset**
342 **data, March 2020**. *Euro surveillance : bulletin Europeen sur les maladies*
343 *transmissibles = European communicable disease bulletin* 2020,
344 **25**(17):doi:10.2807/1560-7917.Es.2020.2825.2817.2000257.
- 345 10. Wölfel R, Corman VM, Guggemos W, Seilmaier M, Zange S, Müller MA, Niemeyer D,
346 Jones TC, Vollmar P, Rothe C *et al*: **Virological assessment of hospitalized patients**
347 **with COVID-2019**. *Nature* 2020, **581**(7809):465-469.
- 348 11. Bullard J, Dust K, Funk D, Strong JE, Alexander D, Garnett L, Boodman C, Bello A,
349 Hedley A, Schiffman Z *et al*: **Predicting infectious SARS-CoV-2 from diagnostic**
350 **samples**. *Clinical infectious diseases : an official publication of the Infectious Diseases*
351 *Society of America* 2020, doi:10.1093/cid/ciaa638:Epub ahead of print.
- 352 12. La Scola B, Le Bideau M, Andreani J, Hoang VT, Grimaldier C, Colson P, Gautret P,
353 Raoult D: **Viral RNA load as determined by cell culture as a management tool for**
354 **discharge of SARS-CoV-2 patients from infectious disease wards**. *European journal*
355 *of clinical microbiology & infectious diseases : official publication of the European*
356 *Society of Clinical Microbiology* 2020, **39**(6):1059-1061.

- 357 13. Wishaupt JO, Ploeg TV, Smeets LC, Groot R, Versteegh FG, Hartwig NG: **Pitfalls in**
358 **interpretation of CT-values of RT-PCR in children with acute respiratory tract**
359 **infections.** *Journal of clinical virology : the official publication of the Pan American*
360 *Society for Clinical Virology* 2017, **90**:1-6.
- 361 14. Spencer S, Chung J, Thompson M, Piedra PA, Jewell A, Avadhanula V, Mei M, Jackson
362 ML, Meece J, Sundaram M *et al*: **Factors associated with real-time RT-PCR cycle**
363 **threshold values among medically attended influenza episodes.** *Journal of medical*
364 *virology* 2016, **88**(4):719-723.
- 365 15. Curran T, Coyle PV: **Understanding the true burden and infection dynamics of**
366 **Bordetella pertussis using molecular diagnostics.** *The Journal of infection* 2016,
367 **72**(4):504-505.
- 368 16. Centers for Disease Control and Prevention: **Duration of Isolation and Precautions**
369 **for Adults with COVID-19.** In.; 2020: Accessed September 2020:
370 <https://www.cdc.gov/coronavirus/2019-ncov/hcp/duration-isolation.html>.
- 371 17. van Kampen JJA, van de Vijver DAMC, Fraaij PLA, Haagmans BL, Lamers MM, Okba N,
372 van den Akker JPC, Endeman H, Gommers DAMPJ, Cornelissen JJ *et al*: **Shedding of**
373 **infectious virus in hospitalized patients with coronavirus disease-2019 (COVID-19):**
374 **duration and key determinants.** *medRxiv* 2020:2020.2006.2008.20125310.
- 375 18. Sethuraman N, Jeremiah SS, Ryo A: **Interpreting Diagnostic Tests for SARS-CoV-2.**
376 *JAMA* 2020.
- 377 19. Wajnberg A, Mansour M, Leven E, Bouvier NM, Patel G, Firpo A, Mendu R, Jhang J,
378 Arinsburg S, Gitman M *et al*: **Humoral immune response and prolonged PCR**
379 **positivity in a cohort of 1343 SARS-CoV 2 patients in the New York City region.**
380 *medRxiv* 2020:2020.2004.2030.20085613.
- 381 20. Public Health England: **Cycle threshold (Ct) in SARS-CoV-2 RT-PCR: A guide for**
382 **health protection teams about interpreting Ct in real-time, reverse transcription**
383 **polymerase chain reaction (RT-PCR) assays performed for Sars-CoV-2.** In.; 2020:
384 Accessed 28 October 2020 : [https://www.gov.uk/government/publications/cycle-](https://www.gov.uk/government/publications/cycle-threshold-ct-in-sars-cov-2022-rt-pcr)
385 [threshold-ct-in-sars-cov-2022-rt-pcr](https://www.gov.uk/government/publications/cycle-threshold-ct-in-sars-cov-2022-rt-pcr).
- 386 21. Centers for Disease Control and Prevention: **Duration of Isolation and Precautions**
387 **for Adults with COVID-19.** In.; 2020: Accessed 19 October 2020:
388 <https://www.cdc.gov/coronavirus/2019-ncov/hcp/duration-isolation.html>.
- 389 22. Korea Disease Control and Prevention Agency: **Findings from investigation and**
390 **analysis of re-positive cases.** In.: Korea Disease Control and Prevention Agency;
391 2020: Accessed 19 May 2020:
392 <http://www.kdca.go.kr/board/board.es?mid=a30402000000&bid=30402000030>.

393