

1 **Gastrointestinal carriage of *Klebsiella pneumoniae* in a general adult population in Norway: a**
2 **cross-sectional study of risk factors and bacterial genomic diversity**

3 **Authors:**

4 Niclas Raffelsberger (ORCID 0000-0002-9463-8915)^{1,2}, Marit Andrea Klokkhammer Hetland
5 (ORCID 0000-0003-4247-8304)^{3,4}, Kristian Svendsen (ORCID 0000-0003-3481-3539)⁵, Lars
6 Småbrekke (ORCID 0000-0001-6475-3368)⁵, Iren H. Löhr (0000-0002-8847-0044)³, Lotte Leonore
7 Eivindsdatter Andreassen¹, Sylvain Brisse (ORCID 0000-0002-2516-2108)⁶, Kathryn E. Holt (ORCID
8 0000-0003-3949-2471)^{7,8}, Arnfinn Sundsfjord (ORCID 0000-0002-3728-2270)^{2,9}, Ørjan Samuelsen
9 (ORCID 0000-0002-5525-2614)^{5,9*}, Kirsten Gravningen (ORCID 0000-0002-8194-3208)^{1,10*}

10 * Contributed equally

11 Corresponding author: Niclas Raffelsberger, Department of Microbiology and Infection Control,
12 University Hospital of North Norway, N-9038 Tromsø, Norway. E-mail: niclas.raffelsberger@unn.no

13 **Affiliations:**

14 ¹ Department of Microbiology and Infection Control, University Hospital of North Norway, Tromsø,
15 Norway

16 ² Department of Medical Biology, Faculty of Health Sciences, UiT The Arctic University of Norway,
17 Tromsø, Norway

18 ³ Department of Medical Microbiology, Stavanger University Hospital, Stavanger, Norway

19 ⁴ Department of Biological Sciences, Faculty of Mathematics and Natural Sciences, University of
20 Bergen, Bergen, Norway

21 ⁵ Department of Pharmacy, Faculty of Health Sciences, UiT The Arctic University of Norway,
22 Tromsø, Norway

23 ⁶ Institut Pasteur, Biodiversity and Epidemiology of Bacterial Pathogens, Paris, France

24 ⁷ Department of Infectious Diseases, Central Clinical School, Monash University, Melbourne, Victoria
25 3004, Australia

26 ⁸ London School of Hygiene & Tropical Medicine, London WC1E 7HT, UK

27 ⁹ Norwegian National Advisory Unit on Detection of Antimicrobial Resistance, Department of
28 Microbiology and Infection Control, University Hospital of North Norway, Tromsø, Norway

29 ¹⁰ Department of Infection Control and Preparedness, Norwegian Institute of Public Health, Oslo,
30 Norway

NOTE: This preprint reports new research that has not been certified by peer review and should not be used to guide clinical practice.

31 **Summary**

32 **Background:** *Klebsiella pneumoniae* is a leading public health threat due to its increasing prevalence
33 of antibiotic resistance. Gastrointestinal carriage of *K. pneumoniae* is a risk factor for subsequent
34 infections in hospitalised patients. We determined risk factors for gastrointestinal carriage and the
35 genomic population structure of *K. pneumoniae* colonising humans in a representative sample of a
36 general population.

37 **Methods:** 2,975 individuals (54% women) ≥ 40 y participating in the population-based Tromsø Study 7
38 (2015-2016) were included. Faecal samples were screened for *K. pneumoniae* which were characterised
39 using whole-genome sequencing. Risk factors for carriage were analysed using data from the Norwegian
40 Prescription Database and questionnaires, using multivariable logistic regression.

41 **Findings:** Prevalence of *K. pneumoniae* gastrointestinal carriage was 16.3% (95% CI 15.0-17.7%) with
42 no gender difference. Risk factors associated with carriage included age ≥ 60 y, travel to Greece or Asia
43 past 12 months (adjusted odds ratio 1.49, 95% CI 1.11-2.00), Crohn's disease/ulcerative colitis (2.26,
44 1.20-4.27), use of protein pump inhibitors (1.62, 1.18-2.22) and non-steroidal anti-inflammatory drugs
45 past six months (1.38, 1.04-1.84), and antibiotic use last month (1.73, 1.05-2.86). Prevalence was
46 higher among those having used combinations of drug classes and decreased over time with respect to
47 preceding antibiotic use. The *K. pneumoniae* population was diverse with 300 sequence types among
48 484 isolates distributed across four phylogroups. Among the isolates, 5.2% and 11.6% harboured
49 acquired resistance and virulence factors, respectively.

50 **Interpretation:** Identification of risk factors for gastrointestinal carriage in a representative sample of
51 a general population allows for identification of individuals that may have a higher risk of extraintestinal
52 infection during hospitalisation. The diverse population structure of *K. pneumoniae* carriage isolates
53 reflects the ecologically adaptive capacity of the bacterium, and the low antibacterial consumption
54 probably contributes to the low prevalence of resistance in clinical isolates in Norway.

55

56 Introduction

57 *Klebsiella pneumoniae* (Kp) is a key pathogen associated with nosocomial infections frequently
58 accompanied by antibiotic resistance.¹ As an opportunistic pathogen, Kp is particularly problematic
59 among neonates, elderly, immunocompromised, and patients with underlying chronic diseases, and
60 commonly causes pneumonia, urinary tract infections, and bacteraemia.¹ Additionally, the problem is
61 exacerbated by the emergence and spread of community-acquired hypervirulent Kp causing infections
62 in healthy individuals, usually presenting as pyogenic liver abscess occasionally accompanied with
63 metastatic spread, but also as meningitis or endophthalmitis.²

64 Kp is known for its high prevalence and diversity of antibiotic resistance genes that challenge treatment
65 options due to infections with multi-drug resistant variants. In Europe, antibiotic resistant Kp was
66 responsible for more than 89,000 infections and 5,600 attributable deaths in 2015.³ Several new
67 antibiotic resistance genes were first discovered within Kp before spreading to other pathogens.⁴
68 Consequently, The World Health Organisation considers antibiotic resistant Kp as a critical-priority
69 bacterium in antibiotic research and development.⁵

70 Recent taxonomic updates show that Kp subdivides into five different species comprising seven
71 phylogroups (Kp1-Kp7) referred to as the *K. pneumoniae* species complex (KpSC).⁶ The phylogroups
72 include *K. pneumoniae sensu stricto* (Kp1), *K. quasipneumoniae* subsp. *quasipneumoniae* (Kp2), *K.*
73 *variicola* subsp. *variicola* (Kp3), *K. quasipneumoniae* subsp. *similipneumoniae* (Kp4), *K. variicola*
74 subsp. *tropica* (Kp5), '*K. quasivariicola*' (Kp6) and *K. africana* (Kp7).⁶ Herein we refer to "Kp" for all
75 members of the KpSC unless otherwise specified. Kp has a broad environmental distribution and
76 transmission routes to humans are not defined.⁶

77 Gastrointestinal carriage of Kp as a reservoir for healthcare-associated Kp infections was established in
78 the early 1970's.⁷ Recent genomic studies show that gastrointestinal carriage is a risk factor for
79 subsequent extraintestinal infections, and ~50% of Kp bloodstream infections are caused by the patient's
80 own gut isolates.^{8,9} Moreover, the relative abundance of Kp in the gastrointestinal tract is associated
81 with an increased risk of Kp bacteraemia.¹⁰

82 Cross-sectional studies have shown that Kp gastrointestinal carriage prevalence varies from 6% to 88%
83 depending on geographical locations, detection methods and the populations investigated.^{8,9,11,12}
84 However, we have a sparse understanding of risk factors for Kp gastrointestinal carriage and the
85 population structure of Kp in the general human population. In a recent cross-sectional study of 911
86 pregnant women in low-income countries, Huynh et al. identified various country-specific
87 environmental exposure factors linked to Kp gut carriage and a diverse Kp population structure.¹²

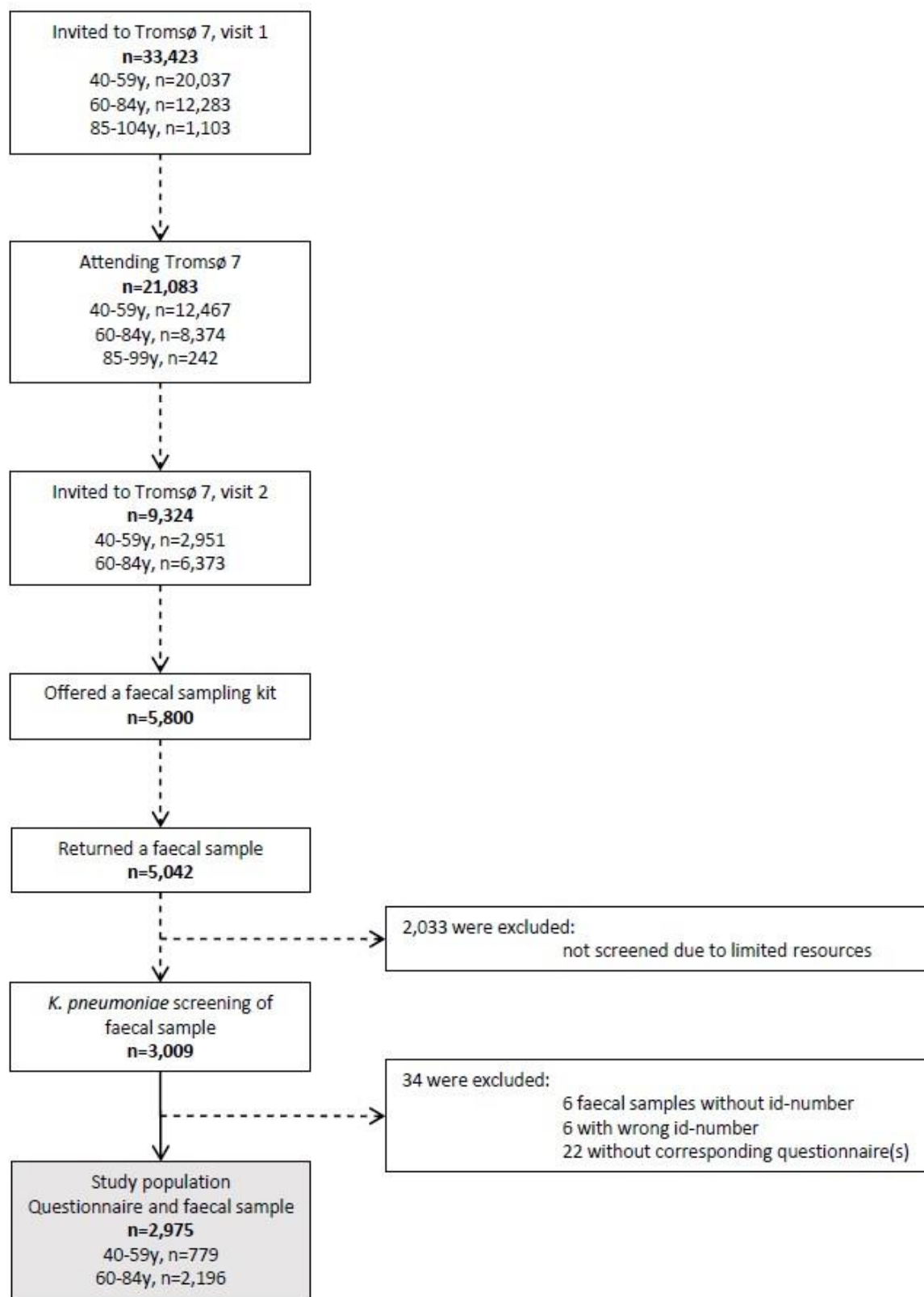
88 Here, we investigated the prevalence of Kp carriage and associated risk factors among 2,975 participants
89 in a cross-sectional study of a representative sample of a general adult population in Norway, a country

90 with a low prevalence of antibiotic resistance and restricted antibiotic use. Additionally, we elucidated
91 the Kp genomic population structure of carriage isolates.

92 **SUBJECTS and METHODS**

93 **Study population and design**

94 The Tromsø study is a population-based study with repeated cross-sectional health surveys in the
95 municipality of Tromsø, Norway. Tromsø is considered as representative of a Northern European, urban
96 population.¹³ The seventh survey (Tromsø 7, <https://uit.no/research/tromsostudy>) was conducted March
97 2015-October 2016 and included two clinical visits. Unique national identity numbers from the official
98 population-registry were used to invite all citizens ≥ 40 years (n=33,423) (Figure 1). Sixty-five percent
99 (n=21,083, 11,074 women) attended the first clinical visit in the study. 9,324 attending the first visit,
100 were invited for a second visit. These represent a random selection of 20% in age-group 40-59 years and
101 50% in age-group 60-84 years of the initially invited participants (n=33,423). To enhance the proportion
102 of participants in earlier Tromsø Studies, 3,154 participants aged 40-84 years who had attended clinical
103 examinations in Tromsø 6 were also invited. From March 2015 to March 2016, 5,800 of the 9,324
104 participants invited for the second visit were consecutively offered a faecal self-sampling kit. In total,
105 87% (n=5,042) returned a faecal sample either at the second visit, or by mail to the laboratory.
106 Participants collected faecal material using nylon-flocked ESwab 490CE.A (Copan, Brescia, Italy). The
107 first 3,009 of the 5,042 collected faecal samples were consecutively screened for the presence of Kp via
108 selective culture. Due to resource limitations, the remaining 2,033 samples were not screened. All
109 participants completed two self-administered structured questionnaires on socio-demographics,
110 smoking, alcohol use, hospitalisation, chronic diseases, and travel abroad. After excluding 12
111 participants with wrong or missing sample identification number and 22 with missing questionnaires,
112 our final study population consists of 2,975 participants.



113

114 **Figure 1:** Flow diagram of study population

115

116 To assess the participants' drug use during the preceding 12 months, data from Tromsø 7 were linked
117 to the Norwegian Prescription Database (NorPD, <http://www.norpd.no/>). NorPD contains detailed
118 information at the individual level on all dispensed prescription-drugs at all pharmacies in Norway. We
119 defined drugs dispensed as drugs used and included the following groups in the Anatomical Therapeutic
120 Chemical (ATC) classification system: A02 (acid related disorders), A10 (diabetes), H03A (thyroid
121 hormones), J01, A07AA09, P01AB01 (antibacterials for systemic use), and M01 (anti-inflammatory
122 and anti-rheumatic drugs).

123 ***Klebsiella pneumoniae* isolation**

124 Upon arrival in the laboratory, 200 µl 85% glycerol was added to each ESwab tube and the samples
125 were stored at -80°C. From the thawed media, 100 µl were plated onto Simmons citrate agar with inositol
126 (SCAI) (both Sigma-Aldrich, Darmstadt, Germany) and incubated for 48 hours at 37°C.¹⁴ Large, yellow,
127 glossy colonies suspected of being *Klebsiella* spp. were identified using mass spectrometry (MALDI-
128 TOF, Bruker Daltonics, Bremen, Germany). The first colony identified as either *K. pneumoniae* or *K.*
129 *variicola* from each sample was kept and further analysed. All samples were plated on cysteine lactose
130 electrolyte deficient agar (MAST Group, Bootle, UK) to assess growth of faecal flora and validity of
131 the samples.

132 **Antimicrobial susceptibility testing**

133 Susceptibility testing was performed according to the EUCAST disk diffusion method and interpreted
134 using the EUCAST 2021 breakpoint table (<https://eucast.org/>).

135 **Genomic sequencing and bioinformatic analyses**

136 DNA was extracted with the MagNA Pure 96 system (Roche Applied Science, Mannheim, Germany) and
137 sequencing libraries were prepared according to the Nextera Flex sample preparation protocol (Illumina,
138 San Diego, CA, USA). Sequencing was performed on the Illumina MiSeq platform to generate 300 bp
139 paired-end reads. All reads were assembled with Unicycler v0.4.8.¹⁵ Kleborate v2.0.0 was used to
140 determine sequence type (ST), species identification, and acquired genes encoding virulence or
141 antibiotic resistance.¹⁶ Kaptive was used to identify capsule biosynthesis loci (KL), and LPS (O) antigen
142 loci. Plasmid replicons were identified with PlasmidFinder v2020-07-13 using Abricate v0.9.9
143 (<https://github.com/tseemann/abricate>). Novel STs, *bla_{SHV}*, *bla_{LEN}*, *bla_{OKP}*, and virulence alleles were
144 assigned by the curators of the Institut Pasteur multilocus sequence type (MLST) and core genome
145 MLST databases (<https://bigsd.bpasteur.fr/klebsiella>). To verify the absence of *bla_{SHV}*/*bla_{LEN}*, observed
146 in two genomes, the raw reads were inspected with SRST2 v0.2.0.¹⁷

147

148

149 **Phylogenetic analyses**

150 To assess the phylogenetic relatedness, a core genome alignment of the 484 genomes against the *K.*
151 *pneumoniae* ST23 NTUH-K2044 reference chromosome (GenBank accession: NC_012731.1) was
152 generated using the RedDog pipeline v1beta.11 (<https://github.com/katholt/RedDog>), and inferred as
153 described previously.¹⁸ To identify the number of single-nucleotide polymorphisms (SNPs) between any
154 two genomes from the resulting alignment, snp-dists v0.7.0 (<https://github.com/tseemann/snp-dists/>)
155 was used.

156 **Definition of hypervirulent Kp**

157 Hypervirulent Kp were defined here according to Huynh *et al.*, as isolates harbouring at least one of the
158 genes *rmpA* and *rmpA2*, and/or at least one complete gene cluster among *iucABCD-iutA* (aerobactin)
159 and *iroBCDN* (salmochelin).¹²

160 **Statistical analyses**

161 The primary analysis was a multivariable logistic regression model with outcome variable being culture-
162 confirmed Kp gastrointestinal carriage using SPSS v26.0 (SPSS, Inc., Chicago, IL, USA). Explanatory
163 variables were selected with the help of a directed acyclic graph constructed using DAGitty v3.0 (Suppl.
164 Fig. 1).¹⁹ All explanatory variables were kept in the fully adjusted model. The strength of the associations
165 was examined by calculating adjusted odds ratios (AORs) with 95% confidence intervals (CIs). Two-
166 sided p-values <0.05 were considered statistically significant. We used R v4.0.0 (Foundation for
167 Statistical Computing, Vienna, Austria) to create a proportional Venn diagram for statistically
168 significant drug groups associated with Kp carriage. STATA v16.1 (StataCorp LLC, Texas, USA) was
169 used to analyse the cumulative change in proportion of Kp carriers associated with antibiotic use in the
170 past 1-12 months.

171 **Ethics**

172 The study, including the linking of data between Tromsø 7 and NorPD, was approved by the Regional
173 Committee for Medical and Health Research Ethics, North Norway (REC North reference: 2016/1788
174 and 2014/940) and the Data Protection Officer at University Hospital of North Norway (reference:
175 2019/4264). The study complied with the Declaration of Helsinki. All participants in Tromsø 7 signed
176 an informed consent form prior to participation.

177 **Role of funding source**

178 This study was supported by grants from the Northern Norway Regional Health Authority (HNF1415-
179 18) and the Trond Mohn Foundation (TMF2019TMT03). The funders of the study played no role in
180 study design, data collection, data analysis, data interpretation, or writing of the report.

181

182 **RESULTS**

183 We analysed data from 2,975 participants (1,615 women, 54.3%, Suppl. Table 1). Median age of
184 participants was 65.0 years (Interquartile Range 59-71 years, no gender difference). Altogether, we
185 identified 484 Kp carriers corresponding to a prevalence of 16.2% (95% CI 14.5-18.1) among women
186 and 16.3% (14.4-18.4) among men.

187 **Kp faecal carriage and associated factors**

188 In analyses adjusting for all of the explanatory variables, Kp faecal carriage was associated with age 60
189 years and older, self-reported travel to Greece or Asia during the preceding 12 months (AOR 1.49, 1.11-
190 2.00) and Crohn's disease/ulcerative colitis (2.26, 1.20-4.27) (Table 1). Furthermore, carriage was
191 associated with the use of proton pump inhibitors (PPIs) (1.62, 1.18-2.22) and non-steroidal anti-
192 inflammatory drugs (NSAIDs) (1.38, 1.04-1.84) in the last six months and antibiotic use in the last
193 month (1.73, 1.05-2.86). Analysis of the significant variables in the multivariable model for the three
194 most frequent species is presented in Suppl. Table 2.

195
196
197
198
199
200
201
202
203
204
205
206
207
208
209
210
211
212
213
214
215
216
217
218
219
220
221

222 **Table 1.** *K. pneumoniae* (Kp) faecal carriage and associated factors among 2,975 participants in Tromsø 7.

	% (Kp)	n (Kp)	Denominator	AOR‡	95% CI	p-value
Age (years)						0.128
40-49	10.8	37	344	1.00		
50-59	15.4	67	435	1.34	0.85-2.11	
60-69	17.3	222	1,286	1.56	1.06-2.30	
70-84	17.4	158	910	1.56	1.03-2.36	
Current daily smoking						0.717
No	16.2	421	2,598	1.00		
Yes	15.7	55	351	0.94	0.66-1.34	
Alcohol consumption frequency						0.050
Never to ≤ monthly	16.4	164	998	1.00		
2-4/month to 2-3/week	16.9	298	1,765	1.13	0.88-1.46	
≥4/week	9.1	18	198	0.61	0.35-1.05	
Alcohol units/occasion						0.365
1-4	16.2	412	2,540	1.00		
≥5	14.1	20	142	0.79	0.47-1.32	
Travel abroad past 12 months^a						0.009
No	15.5	196	1,276	1.00		
Greece or Asia	20.3	102	502	1.49	1.11-2.00	
All other countries	15.3	179	1,171	0.97	0.76-1.26	
Hospitalisation last 12 months						0.844
No	15.9	412	2,588	1.00		
Yes	19.0	67	353	1.03	0.74-1.44	
Diabetes mellitus^b						0.056
No	16.0	427	2,674	1.00		
Yes	23.5	40	170	1.82	0.99-3.36	
Crohn's disease/ulcerative colitis						0.012
No	16.0	452	2,831	1.00		
Yes	28.3	17	60	2.26	1.20-4.27	
Proton pump inhibitors last 6 m^c						0.003
No	15.3	404	2,632	1.00		
Yes	23.3	80	343	1.62	1.18-2.22	
NSAIDs last 6 months^d						0.028
No	15.6	397	2,545	1.00		
Yes	20.2	87	430	1.38	1.04-1.84	
Antibiotic systemic use last 1 m^e						0.032
No	15.8	453	2,866	1.00		
Yes	28.4	31	109	1.73	1.05-2.86	
Metformin last 6 months^f						0.764
No	16.0	460	2,867	1.00		
Yes	22.2	24	108	0.89	0.40-1.95	
Thyroid hormones last 6 months^g						0.333
No	15.9	431	2,714	1.00		
Yes	20.3	53	261	1.20	0.83-1.75	

223 ‡AOR, adjusted odds ratio; CI, confidence interval; m, months; NSAIDs, non-steroidal anti-inflammatory drugs; NorPD,
 224 Norwegian Prescription Database. AOR adjusted for age, current daily smoking, alcohol consumption frequency, alcohol
 225 units/occasion, travel abroad past 12 months, hospitalisation last 12 months, diabetes mellitus, Crohn's disease/ulcerative
 226 colitis and drug use according to NorPD (A02BC, M01, J01, A07AA09, P01AB01, A10BA02, H03AA). The multivariable
 227 model contains 2,446 participants with complete information on all variables.

228 ^a Travelled outside the Nordic countries >1 week duration in the past 12 months.

229 ^b 20 participants who answered "Yes, previously" were excluded.

230 ^c A02BC, drugs used for peptic ulcer and gastro-oesophageal reflux disease.

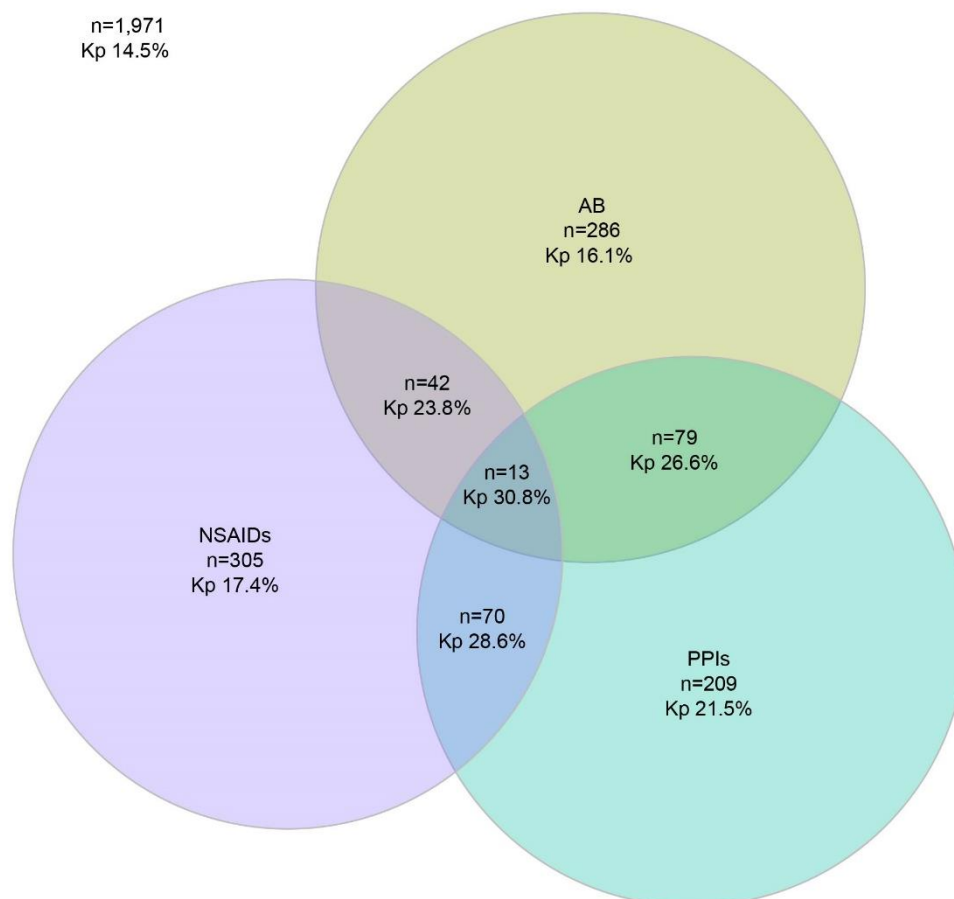
231 ^d M01, anti-inflammatory and anti-rheumatic products (non-steroids), anti-inflammatory/anti-rheumatic agents in
 232 combination and specific anti-rheumatic agents.

233 ^e J01, A07AA09, P01AB01, antibacterials for systemic use, intestinal antiinfectives and nitroimidazole derivatives used as
 234 antiprotozoals (metronidazole).

235 ^f A10BA02, blood glucose lowering drug used in diabetes.

236 ^g H03AA, natural and synthetic thyroid hormones.

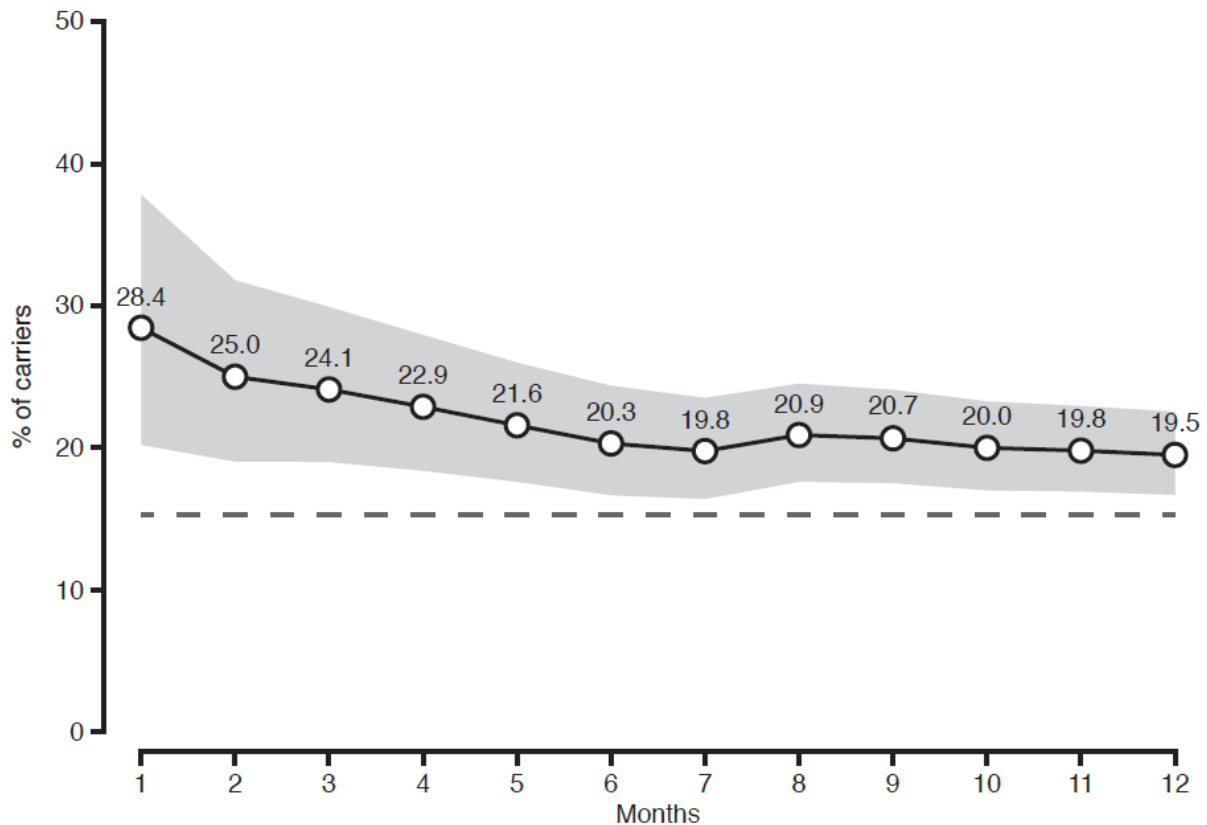
237 The Kp prevalence of the three statistically significantly associated drug classes (usage in past six
238 months) in relation to Kp carriage is shown in Figure 2. Kp prevalence was 16.1% among 286 antibiotic-
239 only users, 17.4% among 305 NSAID-only users and 21.5% among 209 PPI-only users. Kp prevalence
240 increased in each overlapping area for two drug classes, and further increased to 30.8% in the
241 overlapping area for all three.



242
243 **Figure 2.** Proportional Venn diagram of Kp carriage prevalence related to statistically significantly
244 associated drug classes (antibiotics (AB), nonsteroidal anti-inflammatory drugs (NSAIDs) and proton
245 pump inhibitors (PPIs)) the past 6 months among 2,975 study participants.

246
247
248
249
250

251 Looking at the cumulative change in proportion of Kp carriers associated with antibiotic use during 1-
252 12 months before faecal sampling, we found that Kp carriage prevalence was highest amongst those
253 with antibiotic use in the past month (28.4%), or past two months (25.0%), decreasing to around 20.0%
254 in the past 6-12 months (Figure 3). In contrast, in the non-antibiotic using population, prevalence of Kp
255 carriage was significantly lower (15.2%).

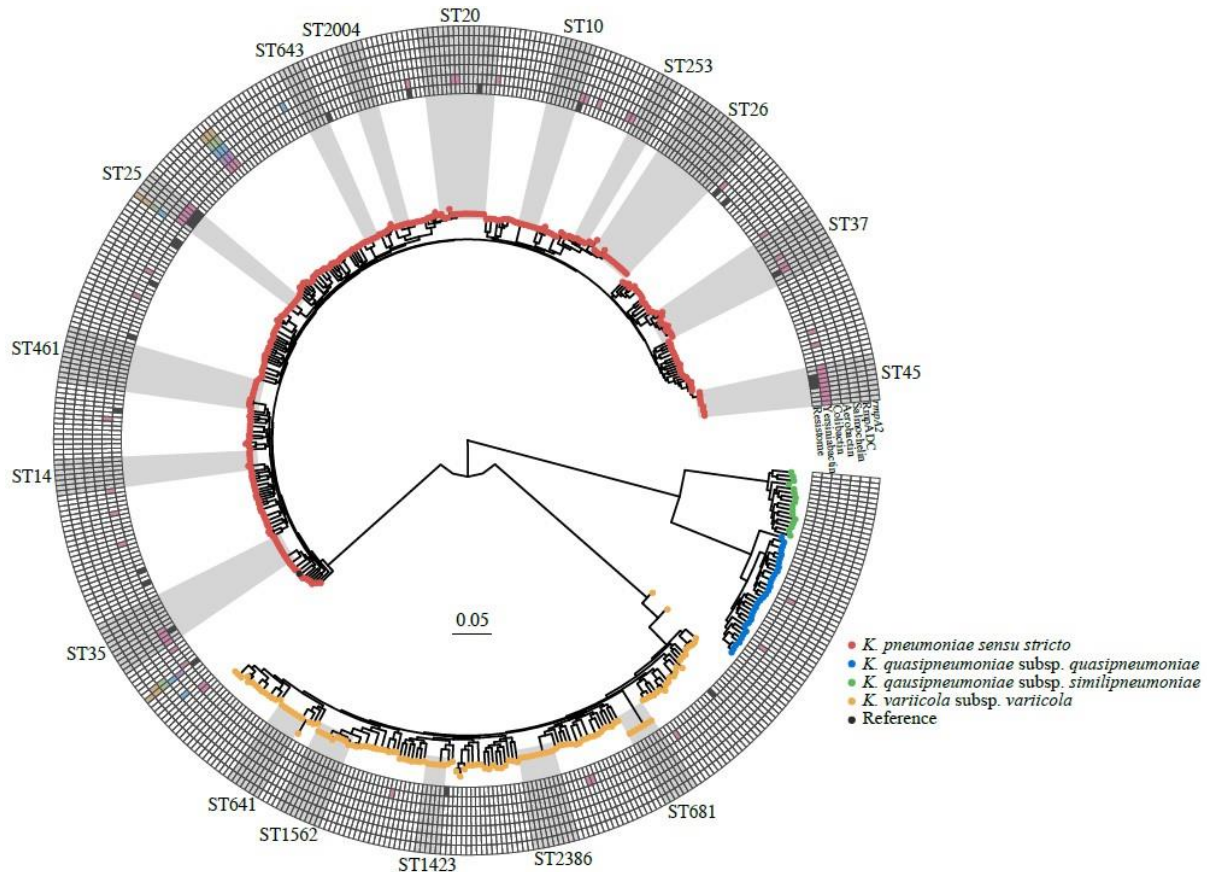


256
257 **Figure 3:** Cumulative change in the proportion of Kp carriers among those who had used antibiotics
258 1-12 months before the faecal sampling. Shaded grey area represents the 95% CI. The time period at
259 each specified month includes data for the preceding months. The dashed black line indicates the
260 prevalence of carriage in the non-antibiotic using population (15.2%).

261 Kp phylogeny and diversity

262 Phylogenetic analysis based on whole-genome sequencing of 484 *K. pneumoniae* isolates identified
263 three species distributed in four phylogroups with a predominance of *K. pneumoniae sensu stricto* (Kp1,
264 62.6%), followed by *K. variicola* subsp. *variicola* (Kp3, 27.7%), *K. quasipneumoniae* subsp.
265 *quasipneumoniae* (Kp2, 6.4%), and *K. quasipneumoniae* subsp. *similipneumoniae* (Kp4, 3.3%) (Figure
266 4, Suppl. Table 3). Phylogroups Kp5-Kp7 were not identified. Using MLST, we found a high degree of
267 genotypic diversity (Simpson diversity index 99.5%) with a total of 300 different STs, including 96
268 (32%) novel STs (Suppl. Fig. 2). The majority (79%) of the STs were represented by a single isolate.
269 Only 17 STs (5.7%) were represented by more than five isolates. The most frequent were ST20 (n=15,

270 3.1%), ST26 (n=13, 2.7%), ST35 (n=9, 1.9%), ST37 (n=9, 1.9%), and ST2386 (n=9, 1.9%). With
271 regard to clonal relatedness we found seven ST35 and three ST25 isolates with a range of zero to five
272 SNPs (Suppl. Table 4), and seven to eight SNPs (Suppl. Table 5), respectively, indicating a recent clonal
273 spread. No close clonal relatedness was identified among the remaining frequent STs (Suppl. Table 6).



274
275 **Figure 4:** Core chromosomal maximum likelihood phylogeny of the 484 Kp genomes. The tips are
276 coloured by species. The heatmap shows presence (colour) or absence (white) of acquired resistance
277 genes (innermost ring) or virulence factors (remaining six rings). Clades corresponding to STs with
278 five or more genomes are highlighted and labelled.

279 **Antimicrobial resistance and plasmid content**

280 The prevalence of resistance was low and none of the isolates were resistant to cefotaxime, meropenem,
281 aztreonam, or ciprofloxacin (Suppl. Fig. 3). Resistance was observed against amoxicillin-clavulanic acid
282 (0.6%), ceftazidime (0.2%), gentamicin (0.4%), cefuroxime (0.6%), trimethoprim-sulfamethoxazole
283 (1.7%), piperacillin-tazobactam (4.8%), and mecillinam (5.0%). This was in concordance with the low
284 number of intrinsic and acquired resistance genes (Figure 4, Suppl. Table 3). A high sequence diversity
285 of species-specific intrinsic narrow-spectrum chromosomal β -lactamase gene alleles were identified
286 (Suppl. Fig. 4, 5, 6, and 7, Suppl. Table 3). Three ampicillin susceptible isolates harboured either deleted
287 *bla_{SHV}*/*bla_{LEN}* genes or a premature stop codon in *bla_{SHV}*. Only 5.2% of the isolates harboured an acquired
288 resistance gene (median number: 2, Suppl. Table 3). *Bla_{SHV-51}* and *bla_{SHV-52}* were assigned by Kleborate

289 as extended-spectrum β -lactamase and inhibitor resistant β -lactamase, respectively. However, both
290 isolates were phenotypically susceptible to all tested β -lactams and β -lactam-inhibitor combinations.
291 Thirty-two plasmid replicon types were identified among 393/484 (81.2%) isolates with IncFIB(K)
292 (25.2%), Col(pHAD28) (15.0%), IncFIB(K) (pCAV1099-114) (11.4%), IncFIA(HI1) (10.5%), and
293 IncFII(pKP91) (9.8%) the most frequent (Suppl. Table 3). The median number of replicon types per
294 isolate was two.

295 **Virulence factors and serotype prediction**

296 The majority of isolates (n=428, 88.4%) did not contain known acquired virulence determinants (Suppl.
297 Table 3). Five *K. pneumoniae sensu stricto* isolates (1.0%) of different STs were defined as
298 hypervirulent, including one isolate of the known hypervirulent ST23 clone.² These five isolates
299 harboured aerobactin (*iuc1* or *iuc2*), salmochelin (*iro1* or *iro2*) and *rmpA* (Suppl. Table 3); three
300 additionally carried the *ybt* locus. Three of the hypervirulent isolates harboured the capsular synthesis
301 locus (KL) 1 or KL2, previously described as hypervirulence associated²; the other two harboured KL23.
302 Overall, the siderophore loci *ybt* (yersiniabactin), *iuc* (aerobactin), and *iro* (salmochelin) were present
303 in 10.7% (n=52), 1.4% (n=7), and 1.0% (n=5) of the isolates, respectively (Suppl. Table 3). A total of
304 96 defined KL types were found (Suppl. Fig. 8), with KL10 being the most frequent (n=21; 4.7%)
305 followed by KL28 (n=18; 4.0%) and KL22 (n=17; 3.8%). KL2 accounted for 2.9% (n=13) and KL1 for
306 only 0.9% (n=4). We observed 11 different defined O-antigen types in 477 isolates (Suppl. Fig. 9) with
307 O1 (n=133; 27.9%) being the most frequent followed by O3/3a (n=113; 23.7%), O2 (n=76; 15.9%), O5
308 (n=58; 12.2%), and O3b (n=47; 9.9%), accounting for 90% of the isolates. Five isolates harboured an
309 O-locus with an undefined O-type.

310 **Discussion**

311 In this large study of a representative sample of a general population in Norway, we detected an overall
312 Kp faecal carriage prevalence of 16.3% with no gender difference. We found that Kp carriage was
313 associated with age 60 years and older, reported Crohn's disease/ulcerative colitis, travel to Asia and
314 Greece in the preceding 12 months, and recent use of PPIs, NSAIDs, and antibiotics. We showed that
315 the Kp population among adults in the community setting in a high-income country with low antibiotic
316 use was highly diverse and characterised by a low prevalence of acquired antibiotic resistance and
317 virulence determinants.

318 The identified Kp carriage prevalence of 16.3% is lower than that observed among pregnant women in
319 low-income countries (40-66%)¹² and among healthy adults in Asian countries (19-88%)¹¹, but in range
320 with a hospital admission study in Australia (6-19%)⁸ and hospitalised patients in the USA (23%).⁹ This
321 could be explained by the different populations investigated (e.g. healthy individuals, hospitalised
322 patient groups, geographic setting, and/or ethnicity), but also by the sampling and detection strategies.
323 Consistent with the culture-based Australian study of hospitalised patients on admission, we found that

324 Kp carrier prevalence increased with age.⁸ The association of Kp gastrointestinal carriage with travel
325 abroad, irrespective of resistance phenotype, has to our knowledge not been demonstrated before. The
326 higher Kp prevalence associated with travel to Asia could be explained by the observed high carriage
327 among people in this region^{11,12}.

328 The increased prevalence of Kp carriage associated with Crohn's disease/ulcerative colitis could be due
329 to disease specific gut microbiota alterations. The gut microbiota of patients with Crohn's disease
330 departs from the normal state as microbial diversity is significantly diminished including an increased
331 abundance of *Enterobacteriales*.²⁰ A review by Kaur et al. 2018 emphasises the possible role of Kp in
332 the pathogenesis of lower intestinal tract diseases.²¹ This corresponds to our findings of a higher Kp
333 carrier prevalence among participants with self-reported Crohn's disease/ulcerative colitis. However,
334 the pathogenesis of Crohn's disease/ulcerative colitis is complex and involves an interplay between
335 different factors which may include the microbiota composition.²²

336 A large number of non-antibiotic drugs have been shown to inhibit growth of one or more representative
337 bacterial species in the human gastrointestinal tract.²³ The positive association of PPI and/or NSAID use
338 with Kp carriage further underpins the influence of non-antibiotic drugs on faecal microbiota and the
339 selection of specific bacterial species. PPI use is implicated in altered gut microbiota composition,
340 bacterial colonisation patterns, including multi-drug resistant microorganisms, and increased
341 susceptibility to enteric bacterial infections.^{24,25} Although no direct evidence exists, it may be possible
342 that Kp as a major etiological agent of liver abscess²⁶, particularly in Asian countries, could be linked
343 to the observation that PPI therapy is associated with an increased risk of cryptogenic liver abscess.²⁷
344 The role of NSAIDs as a risk factor is unclear, but NSAID use has been shown to influence the
345 gastrointestinal microbiota towards a higher relative abundance of *Enterobacteriaceae*.²⁸

346 Systemic antibiotics more obviously influence the microbiota composition. Kp is intrinsically resistant
347 to amino-penicillins and carboxypenicillins, and thus has a selective advantage compared to other
348 bacteria during treatment with penicillins, which constitutes approximately half of human antibiotic use
349 in Norway.²⁹ Antibiotics leave an imprint on the gastrointestinal bacterial community after treatment is
350 removed, ranging from weeks to years in different studies.³⁰ This is consistent with our finding of a
351 significant increase in Kp prevalence related to antibiotic exposure even 12 months prior to faecal
352 sampling. Notably, our data display a quantitative time-response relationship between antibiotic use and
353 Kp carriage. The prevalence of Kp carriage decreased amongst individuals sampled from one to six
354 months post-exposure and reached a plateau at 5% above that of the non-antibiotic using population
355 sampled at 6-12 months post-exposure. The latter indicates a potentially long-lasting effect on faecal Kp
356 occurrence after antibiotic exposure.

357 Comparable to previous reports on Kp carriage isolates in pregnant women in the community-setting in
358 low-income countries¹² and hospitalised patients in high-income countries^{8,9}, we found a

359 phylogenetically highly diverse Kp population with dominance of *K. pneumoniae sensu stricto*. This
360 indicates individually adapted Kp populations with limited interconnection. The observed diversity in
361 our study is also probably an underestimation due to the selection of only one colony for sequencing.
362 Considering the evidence that a high proportion of Kp extraintestinal infections originate from the
363 patients' own carriage isolates^{8,9}, we assume that the Kp carriage population structure among individuals
364 in the community is partly mirrored in the clinical setting. This is in line with the finding that six out of
365 the ten most frequent STs of the carriage isolates also are among the ten most frequently observed STs
366 in an ongoing Kp bacteraemia study in Norway (unpublished data; Fostervold et al.). The low level of
367 antibiotic resistance in our study is consistent with national data in the clinical setting and reflects the
368 relatively low antibiotic consumption in Norway.²⁹

369 This is the first study investigating the prevalence of Kp faecal carriage in a large representative sample
370 of a general population in a community setting in a high-income country. Important methodological
371 strengths include high study attendance rate. We used data from nearly 3,000 people aged ≥ 40 years,
372 thereby avoiding the substantial selection bias related to convenience samples in healthcare settings.
373 Major strengths also include the combined use of questionnaire data, drugs dispensed at pharmacies
374 from a national registry database, and both phenotypic and genomic laboratory results.

375 The age restriction is a limitation. It would have been interesting to analyse Kp prevalence among those
376 below 40 years whom use less antibiotics and have fewer chronic diseases.²⁹ As we found that Kp
377 prevalence increased with age, extrapolation would suggest younger adults to have a lower prevalence.
378 Due to lack of resources, we did not screen all available faecal samples for Kp carriage which would
379 have further increased the precision of the estimates. We used selective SCAI medium for detection of
380 Kp, as this strategy has been shown to have a high Kp recovery supporting the growth of all Kp
381 phylogroups.¹⁴ However, we acknowledge that positive culturing could reflect those with a relative
382 high abundance of Kp and that molecular based approaches, which are less dependent on abundance and
383 phenotypic differentiation, may detect an even higher prevalence of Kp carriage. Home sampling, as
384 conducted in our study, could be another biasing factor. However, we controlled for this by ensuring
385 validity of the samples by assessing bacterial growth consistent with faecal flora on non-selective media
386 and mean transport time from sampling to laboratory arrival was only 1·8 days.

387 In conclusion, our findings illustrate the association of non-antibiotic drugs and inflammatory bowel
388 diseases with increased prevalence of Kp gastrointestinal carriage that warrants considerations with
389 regard to risk stratification in the prevention of healthcare-associated infections. The highly diverse
390 population structure of Kp colonising humans illustrates the capacity for adaptive diversification of this
391 species complex. This complicates the identification of potential Kp cross-niche transmission, which
392 will be important in detection of animal or environmental Kp reservoirs for clinically-relevant human
393 Kp carriage and infection from a One Health perspective.

394 **Author contributions:**

395 ØS conceptualised and acquired funding for the study in collaboration with AS, KG, IHL, SB and KH.
396 ØS was responsible for organising the collection of faecal samples. LLEA did the screening of faecal
397 samples and phenotypic testing. NR, KS, LS and KG conceptualised and conducted the epidemiological
398 analyses of risk factors. IHL organised whole-genome sequencing of isolates. MAKH, NR and ØS did
399 the analysis of whole genome sequence data. SB and KH provided tools for genomic analysis and data
400 curation. NR, MAKH, ØS, and KG prepared first manuscript draft. All authors contributed to review
401 and editing of the manuscript and approved the final version.

402 **Declaration of interests:**

403 All authors report no conflicts of interest.

404 **Acknowledgements**

405 We are grateful for technical assistance from Bjørg Haldorsen, Bettina Aasnæs and Ellen Josefsen in
406 organising the collection of faecal samples in the laboratory. Eva Bernhoff and Ragna-Johanne Bakksjø
407 for performing whole-genome sequencing. Dorota Buczek for creating the Venn diagram. Rod
408 Wolstenholme for figure editing. We thank the team of curators of the Institut Pasteur MLST and whole-
409 genome MLST databases for curating the data and making them publicly available at
410 <https://bigsd.b.pasteur.fr/>.

411 **Data Availability**

412 Bacterial genome data (raw Illumina reads) are publicly available in NCBI under BioProject
413 PRJEB42350. This study is based on data owned by a third party (The Tromsø Study, Department of
414 Community Medicine, UiT The Arctic University of Norway). Confidentiality requirements according
415 to Norwegian law prevents sharing of individual patient level data in public repositories. Application of
416 legal basis and exemption from professional secrecy requirements for the use of personal health data in
417 research may be sent to a regional committee for medical and health research ethics
418 (<https://helseforskning.etikkom.no>). The authors gained access to the data through the Tromsø Study's
419 application process. Guidelines on how to access the data are available at the website
420 <https://uit.no/research/tromsostudy>. All enquiries about the Tromsø Study should be sent by e-mail to
421 tromsous@ism.uit.no. All the questionnaire variables are published in the NESSTAR program system
422 and results can be viewed online: <https://uit.no/research/tromsostudy>.

423

424 **References**

425 1. Podschun R, Ullmann U. *Klebsiella* spp. as nosocomial pathogens: epidemiology, taxonomy, typing
426 methods, and pathogenicity factors. *Clin Microbiol Rev.* 1998; 11(4): 589-603.

- 427 2. Russo TA, Marr CM. Hypervirulent *Klebsiella pneumoniae*. *Clin Microbiol Rev*. 2019 May 15;
428 32(3): e00001-19.
- 429 3. Cassini A, Hogberg LD, Plachouras D, et al. Attributable deaths and disability-adjusted life-years
430 caused by infections with antibiotic-resistant bacteria in the EU and the European Economic Area in
431 2015: a population-level modelling analysis. *Lancet Infect Dis*. 2019; 19(1): 56-66.
- 432 4. Wyres KL, Holt KE. *Klebsiella pneumoniae* as a key trafficker of drug resistance genes from
433 environmental to clinically important bacteria. *Curr Opin Microbiol*. 2018 Oct; 45: 131-9.
- 434 5. Tacconelli E, Carrara E, Savoldi A, et al. Discovery, research, and development of new antibiotics:
435 the WHO priority list of antibiotic-resistant bacteria and tuberculosis. *Lancet Infect Dis*. 2018 Mar;
436 18(3): 318-27.
- 437 6. Wyres KL, Lam MMC, Holt KE. Population genomics of *Klebsiella pneumoniae*. *Nat Rev*
438 *Microbiol*. 2020 Jun; 18(6): 344-59.
- 439 7. Selden R, Lee S, Wang WL, Bennett JV, Eickhoff TC. Nosocomial *Klebsiella* infections: intestinal
440 colonization as a reservoir. *Ann Intern Med*. 1971 May; 74(5): 657-64.
- 441 8. Gorrie CL, Mirceta M, Wick RR, et al. Gastrointestinal carriage is a major reservoir of *K*.
442 *pneumoniae* infection in intensive care patients. *Clin Infect Dis*. 2017 Jul 15;65(2):208-215.
- 443 9. Martin RM, Cao J, Brisse S, et al. Molecular epidemiology of colonizing and infecting isolates of
444 *Klebsiella pneumoniae*. *mSphere*. 2016 Oct 19; 1(5): e00261-16.
- 445 10. Shimasaki T, Seekatz A, Bassis C, et al. Increased relative abundance of *Klebsiella pneumoniae*
446 carbapenemase-producing *Klebsiella pneumoniae* within the gut microbiota is associated with risk of
447 bloodstream infection in long-term acute care hospital patients. *Clin Infect Dis*. 2019 May 30; 68(12):
448 2053-9.
- 449 11. Lin YT, Siu LK, Lin JC, et al. Seroepidemiology of *Klebsiella pneumoniae* colonizing the
450 intestinal tract of healthy Chinese and overseas Chinese adults in Asian countries. *BMC Microbiol*.
451 2012 Jan 19; 12: 13. doi: 10.1186/1471-2180-12-13
- 452 12. Huynh BT, Passet V, Rakotondraso A, et al. *Klebsiella pneumoniae* carriage in low-income
453 countries: antimicrobial resistance, genomic diversity and risk factors. *Gut Microbes*. 2020 Sep 2;
454 11(5): 1287-99.
- 455 13. Eggen AE, Mathiesen EB, Wilsgaard T, Jacobsen BK, Njolstad I. The sixth survey of the Tromso
456 Study (Tromso 6) in 2007-08: collaborative research in the interface between clinical medicine and
457 epidemiology: study objectives, design, data collection procedures, and attendance in a multipurpose
458 population-based health survey. *Scand J Public Health*. 2013; 41(1): 65-80.
- 459 14. Passet V, Brisse S. Association of tellurite resistance with hypervirulent clonal groups of
460 *Klebsiella pneumoniae*. *J Clin Microbiol*. 2015 Apr; 53(4): 1380-2.
- 461 15. Wick RR, Judd LM, Gorrie CL, Holt KE. Unicycler: Resolving bacterial genome assemblies from
462 short and long sequencing reads. *PLoS Comput Biol*. 2017 Jun 8; 13(6): e1005595.

- 463 16. Lam MM, Wick RR, Wyres KL, Holt KE. Genomic surveillance framework and global population
464 structure for *Klebsiella pneumoniae*. *bioRxiv*. 2020: <https://doi.org/10.1101/2020.12.14.422303>
- 465 17. Inouye M, Dashnow H, Raven LA, et al. SRST2: Rapid genomic surveillance for public health and
466 hospital microbiology labs. *Genome Med*. 2014 Nov 20; 6(11): 90.
- 467 18. Wyres KL, Wick RR, Judd LM, et al. Distinct evolutionary dynamics of horizontal gene transfer in
468 drug resistant and virulent clones of *Klebsiella pneumoniae*. *PLoS Genet*. 2019 Apr 15; 15(4):
469 e1008114.
- 470 19. Williams TC, Bach CC, Matthiesen NB, Henriksen TB, Gagliardi L. Directed acyclic graphs: a
471 tool for causal studies in paediatrics. *Pediatr Res*. 2018 Oct; 84(4): 487-93.
- 472 20. Gevers D, Kugathasan S, Denson LA, et al. The treatment-naive microbiome in new-onset Crohn's
473 disease. *Cell Host Microbe*. 2014 Mar 12; 15(3): 382-92.
- 474 21. Kaur CP, Vadivelu J, Chandramathi S. Impact of *Klebsiella pneumoniae* in lower gastrointestinal
475 tract diseases. *J Dig Dis*. 2018 May; 19(5): 262-71.
- 476 22. Nishida A, Inoue R, Inatomi O, Bamba S, Naito Y, Andoh A. Gut microbiota in the pathogenesis
477 of inflammatory bowel disease. *Clin J Gastroenterol*. 2018 Feb; 11(1): 1-10.
- 478 23. Maier L, Pruteanu M, Kuhn M, et al. Extensive impact of non-antibiotic drugs on human gut
479 bacteria. *Nature*. 2018 Mar 29; 555(7698): 623-8.
- 480 24. Bavishi C, Dupont HL. Systematic review: the use of proton pump inhibitors and increased
481 susceptibility to enteric infection. *Aliment Pharmacol Ther*. 2011 Dec; 34(11-12): 1269-81.
- 482 25. Willems RPJ, van Dijk K, Ket JCF, Vandenbroucke-Grauls C. Evaluation of the association
483 between gastric acid suppression and risk of intestinal colonization with multidrug-resistant
484 microorganisms: a systematic review and meta-analysis. *JAMA Intern Med*. 2020 Apr 1; 180(4): 561-
485 71.
- 486 26. Wang JH, Liu YC, Lee SS, et al. Primary liver abscess due to *Klebsiella pneumoniae* in Taiwan.
487 *Clin Infect Dis*. 1998 Jun; 26(6): 1434-8.
- 488 27. Wang YP, Liu CJ, Chen TJ, Lin YT, Fung CP. Proton pump inhibitor use significantly increases
489 the risk of cryptogenic liver abscess: a population-based study. *Aliment Pharmacol Ther*. 2015 Jun;
490 41(11): 1175-81.
- 491 28. Rogers MAM, Aronoff DM. The influence of non-steroidal anti-inflammatory drugs on the gut
492 microbiome. *Clin Microbiol Infect*. 2016 Feb; 22(2): 178 e1- e9.
- 493 29. NORM/NORM-VET 2019. Usage of antimicrobial agents and occurrence of antimicrobial
494 resistance in Norway. Tromsø/Oslo 2020. ISSN:1502-2307 (print)/1890-9965 (electronic).
- 495 30. Willing BP, Russell SL, Finlay BB. Shifting the balance: antibiotic effects on host-microbiota
496 mutualism. *Nat Rev Microbiol*. 2011 Apr; 9(4): 233-43.